

360° Advantages: iPJ-AW250N

HITACHI
Inspire the Next

10W Audio Output

10W Audio Output eliminates the need to connect external speakers.

4,000 Hour Hybrid Filter

Provides users with a lower total cost of ownership by offering easier and less frequent maintenance

Perfect Fit 2

Adjust four corners and four sides of the image one by one

Ultra Short Throw

Project an 80" image from only 22."

Ultra Sonic and IR Sensor

The Ultra Sonic and IR Sensor allow for virtually no lag time between pen and projection.

Template Function

Four line templates in the projector can help when writing on a whiteboard

HDMI

With signals transferred completely in the digital domain, your presentations are assured of the highest image quality.

Input Source Naming

Users can name sources in simple language instead of factory default name

Microphone Input

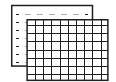
The iPJ-AW250N provides a dedicated microphone jack that even works in standby mode

Ships with StarBoard Software

Transform lessons into creative opportunities to inspire learning with StarBoard Software, a dynamic set of teaching and lesson building tools designed for educators. The projector also allows you to use your software.

ULTIMATE
INTERACTIVE
PROJECTOR

**Exclusive to
Hitachi**



Template Function



IR Remote
Frequency Change



Input Source
Naming

Advantages

Ultra Short Throw Lens (80" diagonal image at 10" from edge)

Ultra Sonic and IR Sensor

Hitachi Proprietary StarBoard Software

Interactive Pen for Natural Writing

HDMI (HDCP)/Component/Composite/S-Video

Perfect Fit 2

Network Control, Maintenance, & Security

Microphone Input

Template Function

Standby Audio

PC-Less Presentation

Input Source Naming

Display via USB

Specification Highlights

2,500 ANSI Lumens

WXGA Resolution (1280 x 800)

4,000 Hour Hybrid Filter*

2000:1 Contrast Ratio (Using Active Iris)

9.1 Lbs.

10 Watt Audio Output

29dB (Eco Mode)

0.3W in Power Saving Standby Mode

CC1, CC2, CC3, CC4

** Actual lamp life will vary by individual lamp and based on environmental conditions, selected operating mode, user settings and usage. Hours of average lamp life specified are not guaranteed and do not constitute part of the product or lamp warranty. Lamp brightness decreases over time.

* Actual filter life will vary by individual filter and based on environmental conditions, selected operating mode, user settings and usage. Hours of average filter life specified are not guaranteed and do not constitute part of the product warranty.

For sales information, please call 800.225.1741
Printed 2.11

All specifications subject to change without notice.
3LCD and the 3LCD logo are registered trademarks of the Seiko Epson Corporation.
©2010 Hitachi America, Ltd. All Rights Reserved.

2,500 ANSI Lumens



Project a clear image in any classroom or conference room.

Interactive Pen



Left and right click give you instant access to Hitachi Software tools.

Ships with Hitachi Proprietary StarBoard Software



Transform lessons into creative opportunities to inspire learning with StarBoard Software, a dynamic set of teaching and lesson building tools designed for educators. The projector also allows you to use your software.

Ultra Short Throw Lens



Featuring an Ultra Short Throw lens which will project a 80" image at 10" from edge of projector. This not only prevents shadows caused by obstructions but also means no shadows and no light shining in the presenter's eyes.

Ultra Sonic and IR Sensor



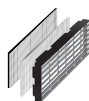
For better performance, both an IR Sensor and Ultra Sonic technology are used. This increases reliability as well as eliminating lag time from pen to projection for a more natural writing experience.

Perfect Fit 2



Perfect fit 2 enables the user to adjust individual corners and sides independent of one another. Perfect Fit 2 provides vertical and horizontal digital correction of either barrel or pin cushion distortions. This feature helps correct geometric and complicated distortions. Perfect Fit 2 allows the projected image to fit correctly to the screen quickly and easily.

Hybrid Filter (4,000 Hours between maintenance)*



Hitachi's hybrid filter consists of a two-stage, layered design and an electrostatic filter, providing dust protection for up to 5,000 hours.

5,000 Hour Lamp Life (Eco Mode)*



Another key to low total cost of ownership is a long life lamp. The lamp is rated at 3,000 hours in standard mode and 5,000 hours in Eco mode.

Input Source Naming



Users can name input sources in simple language instead of factory default name.

Exclusive to Hitachi.

Transition Detector and Security Bar



A security sensor located inside the projector recognizes when the projector has been moved. Moving the projector without using the correct PIN Code will disable the projector.

Closed Captioning



Closed Captioning lets viewers see captions that tell them what is being said or heard on the projector. Support modes CC1, CC2, CC3, CC4

** Actual lamp life will vary by individual lamp and based on environmental conditions, selected operating mode, user settings and usage. Hours of average lamp life specified are not guaranteed and do not constitute part of the product or lamp warranty. Lamp brightness decreases over time.

* Actual filter life will vary by individual filter and based on environmental conditions, selected operating mode, user settings and usage. Hours of average filter life specified are not guaranteed and do not constitute part of the product warranty.

For sales information, please call 800.225.1741
Printed 2.11

Microphone Input



Research studies have shown that microphones improve classroom test scores. The iPJ-AW250N provides a dedicated microphone jack that even works in standby mode.

Power Saving Mode



Power Saving Mode reduces the stand-by power consumption to .5W with limitations to some features.

Microphone Input



Research studies have shown that microphones improve classroom test scores. The iPJ-AW250N provides a dedicated microphone jack that even works in standby mode.

10 Watt Audio Output



10W Audio Output eliminates the need to connect external speakers.

HDMI Input (HDCP)



Digital connectivity allows for highest image quality from your HD device. Compliance with HDCP.

Display via USB



Connect to your computer using the USB port.

Template Function



Line templates in the projector menu can help when writing on a whiteboard. There are four types of line templates to choose from.

Exclusive to Hitachi.

IR Remote Frequency Change



To avoid conflict with fluorescent lights or IrDA (IR Signal) from notebook PC, the frequency of the IR remote control can be changed from the menu. **Exclusive to Hitachi.**

MyButton / MySource - Doc Camera



Two customizable buttons on the remote control allow users to create a shortcut for any projector command such as: Direct Input (RGB1, S-Video etc.), Picture Mode, or Filter Reset. For connection to a document camera, MySource allows users to add a third "Document Camera" source button.

PIN Lock / MyScreen / MyText



PIN lock protection can limit projector users. MyScreen PIN Lock keeps captured images on the startup screen. Users can set a school's name or company's logo to "MyScreen," clearly identifying ownership. MyText provides the ability to write text on the start up screen, such as model name, serial number, or location.

Serial Number Label on Side

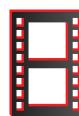


It is convenient for users or auditors to be able to check the model name and serial number of an asset easily when the product is ceiling mounted. The label is upside-down and easily viewable for ceiling-use.





StarBoard Software allows you to arrange and save multiple custom toolbars to suit your specific needs. Drag and drop tools onto any page for added interactivity in every presentation.



Captivate students by pulling together images, videos, links, and Adobe Flash® files to use in conjunction with your lessons. Choose from our library of interactive Flash learning activities and games or bring in your own content.



Save preparation time by importing your existing PowerPoint, Word, PDF, JPEG and other documents directly into StarBoard Software. Create hyperlinks to toggle between pages, files or online content.



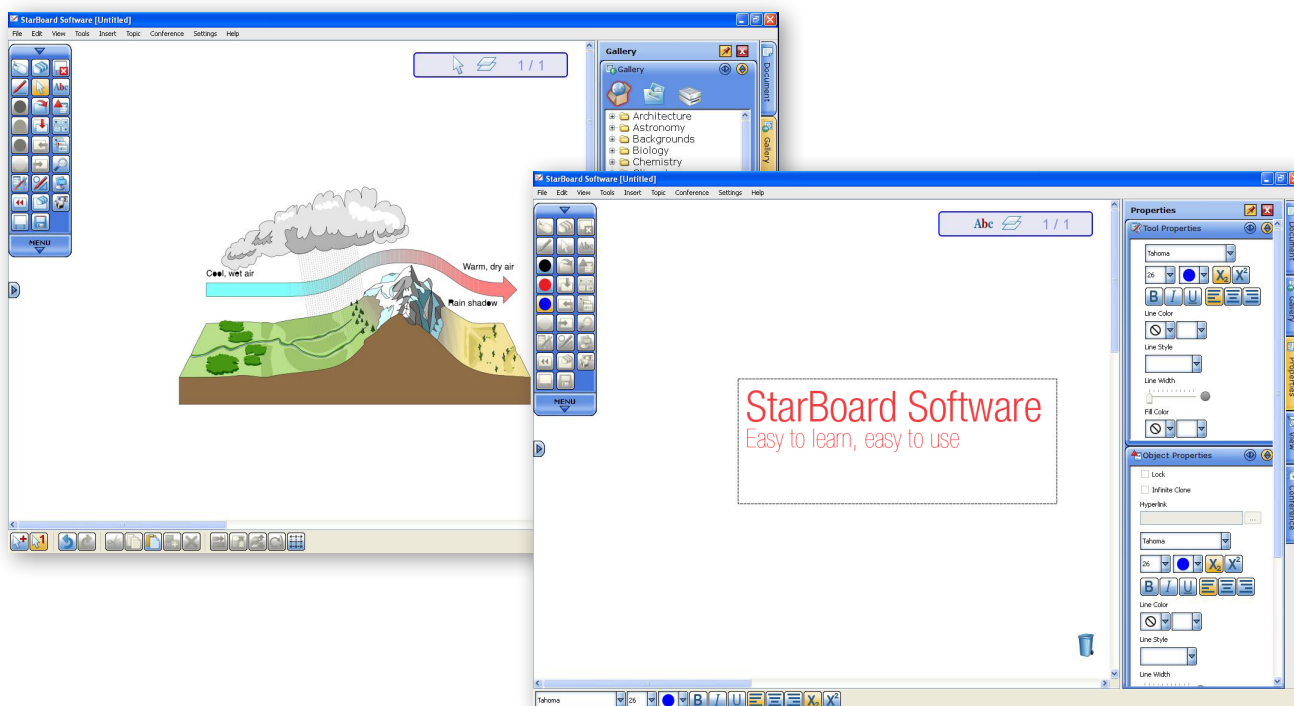
Organize your students' ideas by importing one of StarBoard's graphic organizers. Then distribute the class notes in a matter of minutes by saving, printing, or exporting to a variety of formats.



The intellipen converts your freehand notes into typed text with one click. Search what you wrote in Google™, or the search engine of your choice, directly from StarBoard Software to bring images and articles into your lessons.



Manipulate representations of concrete objects to help students master math concepts. Use the digital protractor to measure angles, or the ruler and grid to demonstrate a graph.



Specifications: iPJ-AW250N

HITACHI
Inspire the Next



Feature Highlights

- 2,500 ANSI Lumens
- Interactive
- Software Agnostic
- Native WXGA Resolution(1280x800)
- Ultra Short Throw 80" diagonal image at 10" from edge
- Perfect Fit 2
- 10W Speaker Output
- Closed Captioning
- 29dB (Eco Mode)
- HDMI (HDCP)/Component/Composite/S-Video
- Network Control, Maintenance, & Security
- Campus Notification System
- Content over IP
- Microphone Input
- Template Function
- Standby Audio
- 0.3W in Power Saving Standby Mode



Specifications

Model Name	iPJ-AW250N
Liquid Crystal Panel Structure	0.59" Polysilicon Active-matrix TFT x 3
Number of Pixels	1,024,000 Pixels
Resolution	Video 540 TV lines 1280 dots x 800 lines 16,700,000 colors
Colors	Native 16:10
Aspect Ratio	F=1.8
Lens	0.3 : 1
Throw Ratio (distance : width)	210W UHP
Lamp	2,500 ANSI lumens
Brightness	2,500 ANSI lumens
Color Light Output	Approximately 3,000 hours (normal) 5,000 hours (Eco Mode)
Expected lamp Life	2000:1 (using Active Iris)
Contrast Ratio	10W
Speaker Output	AC90 ~ 132V / AC198 - 264V 50/60 Hz Power
Power Supply	310W (0.3W @ standby in Power Saving Mode)
Power Consumption	5°C - 35°C (41°F - 95°F)
Operating Temperature	VGA, SVGA, XGA, WXGA, WXGA+, SXGA, WSXGA+, UXGA, MAC16"
Input Signals	RGB Composite Video Component Video
Average Acoustic Noise Level	NTSC, NTSC4.43, PAL, SECAM, PAL-M, PAL-N 480i, 576i, 480p, 720p, 1080i, 1080p
H-Sync	35 dB (29 dB in Eco Mode)(TBD)
V-Sync	15 kHz - 106 kHz
Approvals	50 Hz - 120 Hz
RGB Input	UL, C-UL, FCC, CE
RGB Output	Analog RGB 15-pin D-sub connector x 2
Digital Input	RGB 15-pin D-sub connector x 1
Video Input	HDMI x 1 (HDCP Compliant) Mini DIN 4-pin connector x 1
Audio	S-Video Composite Video Component Video
Ethernet	15-pin D-sub connector (Shared with Analog RGB)
Control Terminals	Input Stereo mini jack x 2, RCA (L/R) x 1 pair, Microphone Jack x 1
USB(Mouse)	Output RCA (L/R) x 1 pair
Interactive Pen	RJ-45 port
Dimensions (W x H x D)	9-pin D-sub connector x 1 (RS-232 control)
Weight	USB Type-B x 1 (Remote Mouse)
Additional Features	I-PEN 11.6" x 4.0" x 11.9" (Mirror Closed)
Supplied Accessories	9.1 lbs. Kensington Slot, Digital Gamma Correction, Input Source Naming, MyMemory / MyScreen / MyButton, Wired Remote Power Cord, RGB Cable, Wireless Remote Control, AA Batteries(2), Security Label, User's Manual, Network Manual, Interactive Pen, Application Software CPAW250NLAMP (DT01181)
Lamp Part #	HLO2772
Remote Control Part #	UX37191
Filter Part #	AW250NWALLARM
Optional Wall Arm	

Aspect Ratio 16:10

Screen Diagonal	Distance from Leading Edge of Projector to Screen	Distance from Mirror to Screen
60"	4.7"	16.8"
70"	7.4"	19.4"
80"	10.1"	22.1"
90"	12.8"	24.9"
100"	15.4"	27.5"

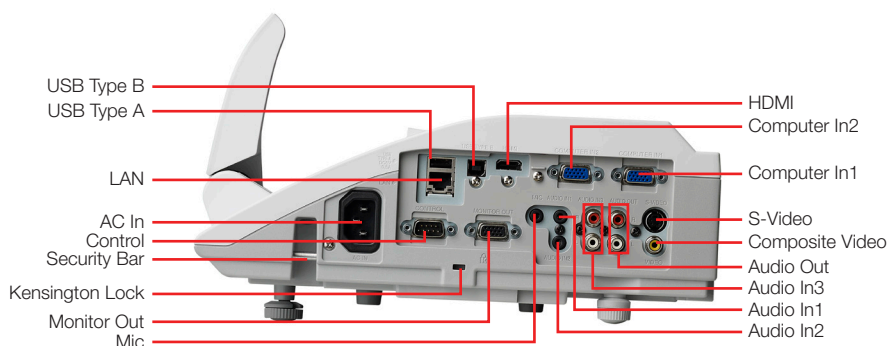
Throw Ratio from Edge of Projector: 0.3 : 1
Throw Ratio from Mirror: 0.1:1

Disclaimer: Please use this throw distance calculator for reference purpose only. For permanent installation purpose, we recommended that you assume 10% calculation margin of error or to test the unit on site.

** Actual lamp life will vary by individual lamp and based on environmental conditions, selected operating mode, user settings and usage. Hours of average lamp life specified are not guaranteed and do not constitute part of the product or lamp warranty. Lamp brightness decreases over time.

* Actual filter life will vary by individual filter and based on environmental conditions, selected operating mode, user settings and usage. Hours of average filter life specified are not guaranteed and do not constitute part of the product warranty.

For sales information, please call 800.225.1741
Printed 2.11



All specifications subject to change without notice.
3LCD and the 3LCD logo are registered trademarks of the Seiko Epson Corporation.
©2010 Hitachi America, Ltd. All Rights Reserved.