

marine **X** change

© 2015 Enter your company name

© 2015 Enter your company name

All rights reserved. No parts of this work may be reproduced in any form or by any means - graphic, electronic, or mechanical, including photocopying, recording, taping, or information storage and retrieval systems - without the written permission of the publisher.

Products that are referred to in this document may be either trademarks and/or registered trademarks of the respective owners. The publisher and the author make no claim to these trademarks.

While every precaution has been taken in the preparation of this document, the publisher and the author assume no responsibility for errors or omissions, or for damages resulting from the use of information contained in this document or from the use of programs and source code that may accompany it. In no event shall the publisher and the author be liable for any loss of profit or any other commercial damage caused or alleged to have been caused directly or indirectly by this document.

Printed: Oktober 2015 in Austria

Publisher

© 2015 *Enter your company name*

Table of Contents

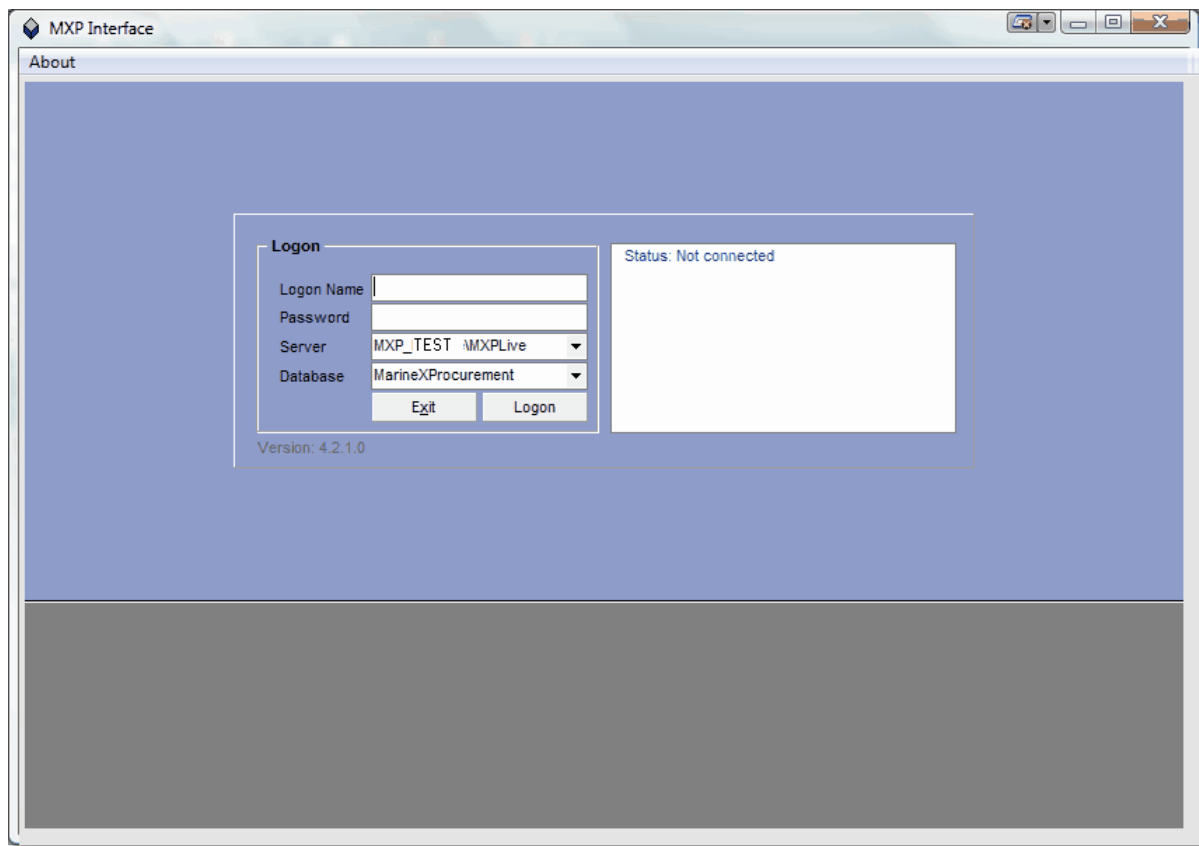
Part I Introduction	1
1 Logging In	2
2 Interface Jobs	4
3 Daily Interface Checks	6
4 Regular SQL check	12
5 Inbox Outbox	13
6 User Manual Change log	15

1 Introduction

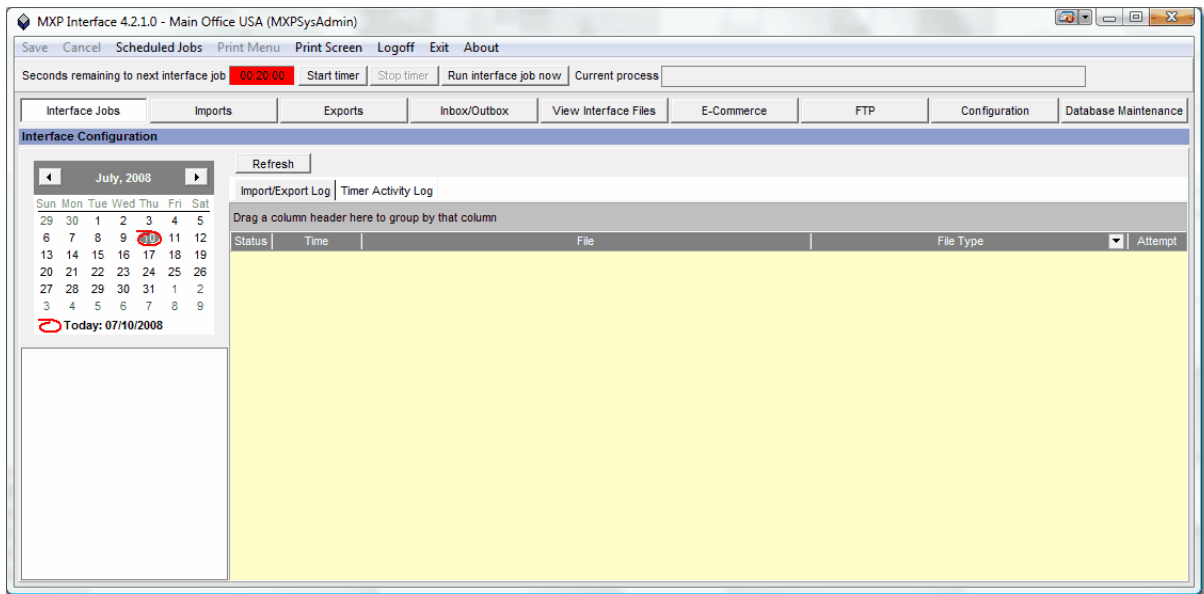
1.1 Logging In

The SQL Server name and SQL Server database name are stored in the **MarineXchange.ini** file located in directory *C:\MXP\Executables*

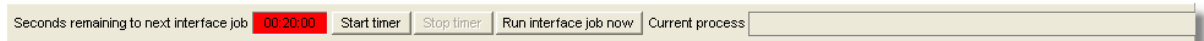
1. To login to the MXP Interface application, click on the **MXP Interface** icon.
2. Enter the user name of MXP_INTERFACE.
3. Enter the password into the `Password` field.
4. Click the **Logon** button.



The **MXP Interface** screen will be displayed showing the **Interface Jobs** screen as a default. Refer to [Interface Jobs](#) for a detailed description.

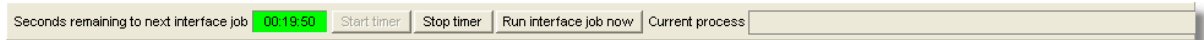


The following information is also displayed at the top of the **MXP Interface** screen:



The seconds remaining to next interface job shows in red as the timer is not running.

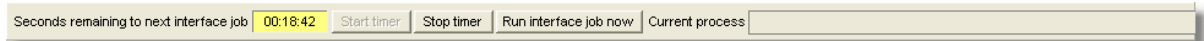
Click on the **Start Timer** button, the seconds will count down to when the next interface job will be run and the timer will now show in green to indicate that it is running.



Click on the **Stop Timer** to stop the timer from running.

In order for the automatic imports and exports to take place the timer needs to be running all of the time.

Click on the **Run Interface Job Now** button to run an interface job. The timer will now show in yellow and will count down for the duration of the interface job. The interface job detail will be displayed within the `Current Process` field. The timer will also show in yellow when the application is running an automatic job.



1.2 Interface Jobs

The *Import/Export Log* tab within the *Interface Jobs* screen shows a daily summary of all imported and exported files:

The screenshot shows the MXP Interface 4.2.2.0 - Miami Office (MXP Interface Application) window. The 'Interface Configuration' section is visible, with the 'Import/Export Log' tab selected. A calendar on the left shows the current date as 07/10/2008. The main area displays a table of file operations with the following columns: Status, Time, File, File Type, and Attempt.

Stat...	Time	File	File Type	Attempt
✓	08:44:54	PO document OCI15AugPO0452	Received e-commerce document	1
✓	08:44:55	PO document OCI17SepPO0453	Received e-commerce document	1
✓	08:44:57	PO document OCI08SepPO0454	Received e-commerce document	1
✓	08:44:59	PO document OCI18JulPO0457	Received e-commerce document	1
✓	08:46:58	MXP_Merge_INS_06Jul20080119_INS_CHANGED_0746.zip	MXP Merge Replication File - Import	1
✓	08:46:58	MXP_Merge_INS_07Jul20080110_INS_NEW_0747.zip	MXP Merge Replication File - Import	1
✓	08:46:58	MXP_Merge_INS_07Jul20080110_INS_CHANGED_0748.zip	MXP Merge Replication File - Import	1
✓	10:39:50	PO document OCI19JulPO0451	Received e-commerce document	1
✓	11:51:40	PO document OCI15AugPO0455	Received e-commerce document	1
✓	16:48:45	PO document PCH01AugPO0459	Received e-commerce document	1
✓	16:48:45	PO document PCH30JulPO0460	Received e-commerce document	1
✓	16:48:46	PO document PCH30JulPO0461	Received e-commerce document	1
✓	19:02:35	MXP_Merge_PCH_07Jul20081902_REG_NEW_0811.zip	MXP Merge Replication File - Export	1
✓	19:03:06	MXP_Merge_PCH_07Jul20081902_REG_CHANGED_0812.zip	MXP Merge Replication File - Export	1
✓	19:03:39	MXP_Merge_PCH_07Jul20081903_NAU_NEW_0850.zip	MXP Merge Replication File - Export	1
✓	19:04:11	MXP_Merge_PCH_07Jul20081903_NAU_CHANGED_0851.zip	MXP Merge Replication File - Export	1
✓	19:04:25	MXP_Merge_PCH_07Jul20081904_INS_NEW_0809.zip	MXP Merge Replication File - Export	1
✓	19:04:54	MXP_Merge_PCH_07Jul20081904_INS_CHANGED_0810.zip	MXP Merge Replication File - Export	1
✓	20:18:38	MXP_Merge_REG_08Jul20080112_REG_NEW_0781.zip	MXP Merge Replication File - Import	1
✓	20:29:10	MXP_Merge_REG_08Jul20080112_REG_CHANGED_0782.zip	MXP Merge Replication File - Import	1
✓	20:49:55	MXP_Merge_INS_08Jul20080114_INS_NEW_0749.zip	MXP Merge Replication File - Import	1
✓	20:49:55	MXP_Merge_INS_08Jul20080115_INS_CHANGED_0750.zip	MXP Merge Replication File - Import	1
✓	21:23:59	MXP_Merge_NAU_08Jul20080117_NAU_NEW_0763.zip	MXP Merge Replication File - Import	1
✓	21:23:59	MXP_Merge_NAU_08Jul20080117_NAU_CHANGED_0764.zip	MXP Merge Replication File - Import	1

Click on a date within the *Calendar* to change days. Use the *Left Arrow* and *Right Arrow* buttons within the *Calendar* to change months and years. Click on the *Refresh* button after each change.

- **Status:** Displays a green tick to indicate that the import/export was successful, displays a red cross for unsuccessful ones.
- **Time:** Displays the time in which the file took to import/export.
- **File:** Displays the name of the file.
- **File Type:** Displays the type of file and whether it is an export or an import.
- **Attempt:** Displays the number of attempts that it took to import/export the file before it was successful.

The *Timer Activity Log* tab displays a log of activity that has taken place within the Interface Application:

MXP Interface 4.2.2.0 - Miami Office (MXP Interface Application)

Save Cancel Scheduled Jobs Print Menu Print Screen Logoff Exit About

Seconds remaining to next interface job **00:00:55** Start timer Stop timer Run interface job now Current process

Interface Jobs Imports Exports Inbox/Outbox E-Commerce FTP Configuration

Interface Configuration

Refresh

Import/Export Log Timer Activity Log

Installation Miami Office

Date/Time	Activity Description	User
09-Jul-2008, 00:01:08	Running automatic interface jobs	MXP Interface Application
09-Jul-2008, 00:11:13	Running automatic interface jobs	MXP Interface Application
09-Jul-2008, 00:21:14	Running automatic interface jobs	MXP Interface Application
09-Jul-2008, 00:31:15	Running automatic interface jobs	MXP Interface Application
09-Jul-2008, 00:41:16	Running automatic interface jobs	MXP Interface Application
09-Jul-2008, 00:51:17	Running automatic interface jobs	MXP Interface Application
09-Jul-2008, 01:01:18	Running automatic interface jobs	MXP Interface Application
09-Jul-2008, 01:11:19	Running automatic interface jobs	MXP Interface Application
09-Jul-2008, 01:21:21	Running automatic interface jobs	MXP Interface Application
09-Jul-2008, 01:31:25	Running automatic interface jobs	MXP Interface Application
09-Jul-2008, 01:41:41	Running automatic interface jobs	MXP Interface Application
09-Jul-2008, 01:51:45	Running automatic interface jobs	MXP Interface Application
09-Jul-2008, 02:01:49	Running automatic interface jobs	MXP Interface Application
09-Jul-2008, 02:11:53	Running automatic interface jobs	MXP Interface Application
09-Jul-2008, 02:21:56	Running automatic interface jobs	MXP Interface Application
09-Jul-2008, 02:32:00	Running automatic interface jobs	MXP Interface Application
09-Jul-2008, 02:42:04	Running automatic interface jobs	MXP Interface Application
09-Jul-2008, 02:52:07	Running automatic interface jobs	MXP Interface Application
09-Jul-2008, 03:02:11	Running automatic interface jobs	MXP Interface Application
09-Jul-2008, 03:12:26	Running automatic interface jobs	MXP Interface Application
09-Jul-2008, 03:22:30	Running automatic interface jobs	MXP Interface Application
09-Jul-2008, 03:32:34	Running automatic interface jobs	MXP Interface Application
09-Jul-2008, 03:42:39	Running automatic interface jobs	MXP Interface Application
09-Jul-2008, 03:52:42	Running automatic interface jobs	MXP Interface Application
09-Jul-2008, 04:02:45	Running automatic interface jobs	MXP Interface Application
09-Jul-2008, 04:12:48	Running automatic interface jobs	MXP Interface Application
09-Jul-2008, 04:22:51	Running automatic interface jobs	MXP Interface Application
09-Jul-2008, 04:32:54	Running automatic interface jobs	MXP Interface Application

Start | [Icons] | Inbox - Microsoft Outlook | MXP Interface | [System Tray] | 10:49 AM

1.3 Daily Interface Checks

To ensure that the imports and exports run as they should it is recommended that the following daily checks take place with the MXP Interface Application

Is the Application Running?

First of all it is important to check that the MXP Interface Application is actually running on the server. Check that the *MXS Interface* bar is present on the desktop task bar of the server. If the MXP Interface Application is not loaded, make sure that only one session is running (e.g. via terminal service manager or taskmanager) on the server before you load the MXP interface executable.



Is Outlook loaded?

Merge files are getting send via Outlook. Therefore Outlook always needs to be loaded in order to receive and send the files for the merge replication. Check that the *MXS Interface* bar is present on the desktop task bar of the server.



Is the MXP File Transfer service started?

Merge files are getting send via FTP. Therefore the MXP File Transfer Service always needs to be loaded in order to receive and send the files for the merge replication. Check that the *MXPFiletransferservice* icon is present in the notification bar of the system icons.



Is the Timer Running?

In order for the automatic imports and exports to take place the timer needs to be running all of the time.

Maximize the application by clicking on the *MXS Interface* bar on the desktop task bar of the server as shown in the screen above. The *Interface Jobs* screen will open as a default.

Seconds remaining to next interface job **00:09:07** Start timer Stop timer Run interface job now Current process

Interface Jobs Imports Exports Inbox/Outbox E-Commerce FTP Configuration

Interface Configuration

Refresh

Import/Export Log Timer Activity Log

Drag a column header here to group by that column

Stat	Time	File	File Type	Attempt
✓	08:44:54	PO document OCI15AugPO0452	Received e-commerce document	1
✓	08:44:55	PO document OCI17SepPO0453	Received e-commerce document	1
✓	08:44:57	PO document OCI08SepPO0454	Received e-commerce document	1
✓	08:44:59	PO document OCI18JulPO0457	Received e-commerce document	1
✓	08:46:58	MXP_Merge_INS_06Jul20080119_INS_CHANGED_0746.zip	MXP Merge Replication File - Import	1
✓	08:46:58	MXP_Merge_INS_07Jul20080110_INS_NEW_0747.zip	MXP Merge Replication File - Import	1
✓	08:46:58	MXP_Merge_INS_07Jul20080110_INS_CHANGED_0748.zip	MXP Merge Replication File - Import	1
✓	10:39:50	PO document OCI19JulPO0451	Received e-commerce document	1
✓	11:51:40	PO document OCI15AugPO0455	Received e-commerce document	1
✓	16:48:45	PO document PCH01AugPO0459	Received e-commerce document	1
✓	16:48:45	PO document PCH30JulPO0460	Received e-commerce document	1
✓	16:48:46	PO document PCH30JulPO0461	Received e-commerce document	1
✓	19:02:35	MXP_Merge_PCH_07Jul20081902_REG_NEW_0811.zip	MXP Merge Replication File - Export	1
✓	19:03:06	MXP_Merge_PCH_07Jul20081902_REG_CHANGED_0812.zip	MXP Merge Replication File - Export	1
✓	19:03:39	MXP_Merge_PCH_07Jul20081903_NAU_NEW_0850.zip	MXP Merge Replication File - Export	1
✓	19:04:11	MXP_Merge_PCH_07Jul20081903_NAU_CHANGED_0851.zip	MXP Merge Replication File - Export	1
✓	19:04:25	MXP_Merge_PCH_07Jul20081904_INS_NEW_0809.zip	MXP Merge Replication File - Export	1
✓	19:04:54	MXP_Merge_PCH_07Jul20081904_INS_CHANGED_0810.zip	MXP Merge Replication File - Export	1
✓	20:18:38	MXP_Merge_REG_08Jul20080112_REG_NEW_0781.zip	MXP Merge Replication File - Import	1
✓	20:29:10	MXP_Merge_REG_08Jul20080112_REG_CHANGED_0782.zip	MXP Merge Replication File - Import	1
✓	20:49:55	MXP_Merge_INS_08Jul20080114_INS_NEW_0749.zip	MXP Merge Replication File - Import	1
✓	20:49:55	MXP_Merge_INS_08Jul20080115_INS_CHANGED_0750.zip	MXP Merge Replication File - Import	1
✓	21:23:59	MXP_Merge_NAU_08Jul20080117_NAU_NEW_0763.zip	MXP Merge Replication File - Import	1
✓	21:23:59	MXP_Merge_NAU_08Jul20080117_NAU_CHANGED_0764.zip	MXP Merge Replication File - Import	1

Start | Inbox - Microsoft Outlook | MXS Interface | 10:51 AM

Check that the timer at the top of the screen is green. If the timer is yellow then the MXP Interface Application is in the process of importing \ exporting a file. Refer to [Logging in](#) for further details. If the timer is red then the timer is switched off and must be turned back on again.

Seconds remaining to next interface job **00:20:00** Start timer Stop timer Run interface job now Current process

To turn the timer back on, click on the **Start Timer** button, the seconds will count down to when the next interface job will be run and the timer will now show in green to indicate that it is running.

Seconds remaining to next interface job **00:19:50** Start timer Stop timer Run interface job now Current process

Are there any files in the Inbox/Outbox of the MXP Interface Application?

The **Inbox/Outbox** screen of the MXP Interface Application needs to be checked daily to ensure that it does not contain any files. Due to the configuration of the MXP Interface Application, an automatic process takes place which moves files from the Inbox to import them and archives exported files from the outbox. Please refer to [Inbox/Outbox](#) for further details.

Are all merge files complete?

Check if all merge files are complete between the office and the ship installations. Depending on the clients setup the amount of merge replications per day can be different. The standard setup is one

merge replication during the night between the main office and all installations. Each merge replication indicates two files, one is called `_NEW` and one `_CHANGED`. The setup of the file name is explained with below example:

The screenshot shows the 'MXP Database Merge Replication Import Log' window. The main table contains the following data:

Sta.	From Installation	Date	Count	File Name	Records	Errors
✓	MS Blue	10-Jul-2008	4	MXP_Merge_BLU_10Jul20081227_BLU_CHANGED_0004.z	43067	0
✓	MS Blue	10-Jul-2008	3	MXP_Merge_BLU_10Jul20081227_BLU_NEW_0003.zip	99	0

The 'Import Details' table at the bottom right shows the following data:

Database Table	Records			
	Total	Updated	New	Errors
Users	24	24	0	0
Accounting_Periods	17	17	0	0
IM	84	84	0	0
IM_Specs	13	13	0	0
IM_Location_Detail	45	45	0	0
Storing_Piers	183	183	0	0
Cruise	2039	2039	0	0
Cruise_Days	15147	15147	0	0
Cruise_Itinerary	15565	15565	0	0
Cruise_Profiles	1	1	0	0
Doc_Templates	8	8	0	0
Deleted_Records	9933	9933	0	0
Total	13,067	43,067	0	0

Did the files generate any errors?

It is very rare for errors to be generated from Import and Export files, however it is still good practice to check this daily.

1. Check the Import files. Change to the `Imports` screen and view the data displayed in the *MXP Interfaces Import Log* tab.

If a file has not managed to import \ export at all then a red cross will be displayed next to the file name as shown in the screen shot example below. This is very rare and may not ever occur however in the unlikely event that it does happen it is necessary to contact *MarineXchange* Support.

MXP Interfaces Import Log | Custom Interfaces Import Log | Manual Import

MXP Database Merge Replication Import Log

Show records from 08/30/2006 To 09/08/2006 Filter

Sta...	From Installation	Date	Counter	File Name	Records	Errors
✓		05-Sep-2006		MXP_DB_04Sept2006.zip	18	0
✗		04-Sep-2006		MXP_DB_04Sept2006.zip	0	0
✓		01-Sep-2006		MXP_DB_29Aug2006.zip	16	1
✓		01-Sep-2006		MXP_DB_27Aug2006.zip	17	0

File Name: MXP_DB_04Sept2006.zip

Directory: C:\MXP\Interface_Files\Import\NBOX

Import

Started at: 05-Sep-2006, 09:31:36

Finished at: 05-Sep-2006, 09:31:59

Duration: 12:23

Export Date Range

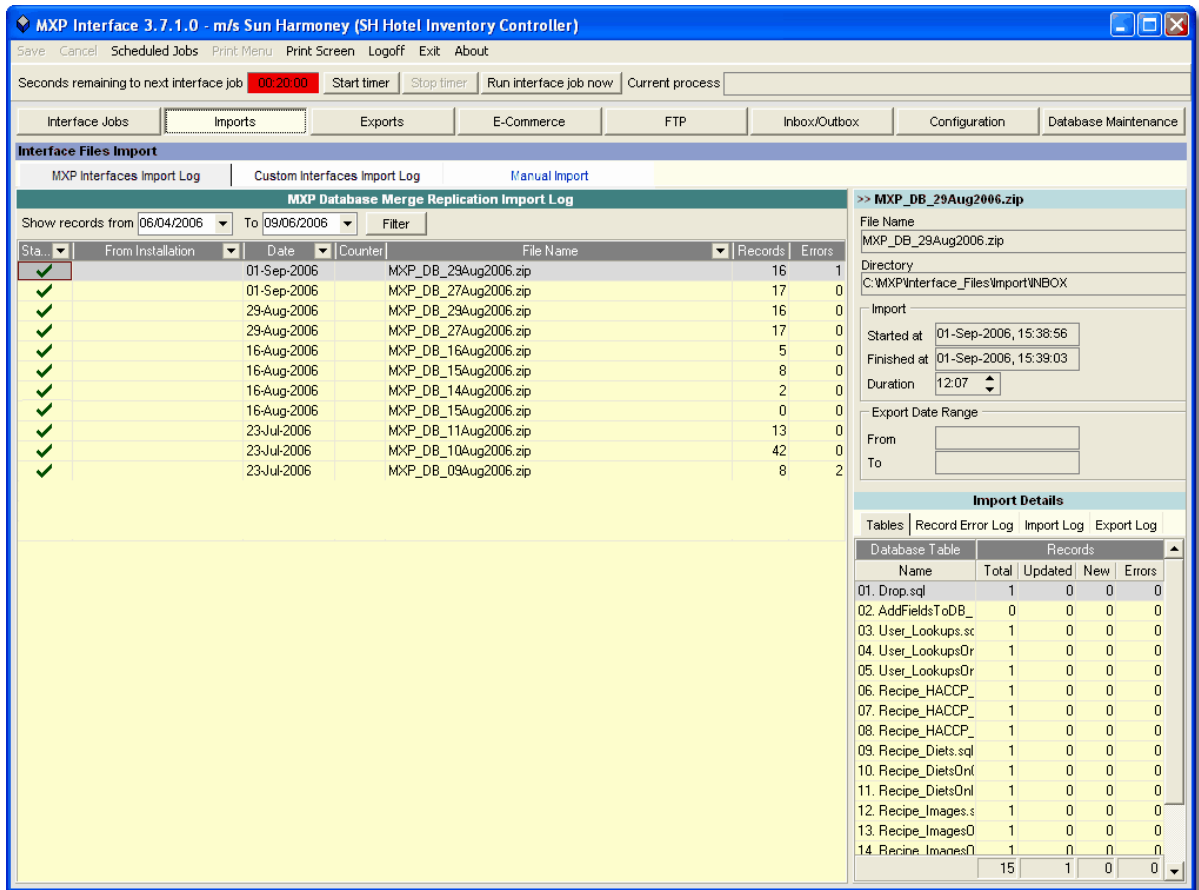
From:

To:

Import Details

Database Table	Total	Updat...	New	Errors
01. Drop.sql	1	0	0	0
02. VHACCPGuide	1	0	0	0
03. Recipe_Substit	1	0	0	0
04. Recipe_Substit	1	0	0	0
05. Recipe_Substit	1	0	0	0
06. VRecipe_Ingre	1	0	0	0
07. Tour_Program_	1	0	0	0
08. Tour_Program_	1	0	0	0
09. Tour_Program_	1	0	0	0
10. UpdatePOCont	1	0	0	0
12. AddFieldsToCc	1	2963	0	0
13. AddFieldsToCc	1	2963	0	0
Total	18	5,640	0	0

2. It is also necessary to check if any errors occurred in the imported files, in the example below one error has been found in the highlighted file:



3. Highlight the record which contains the error and click on the **Record Error Log** tab to view the errors in more detail. If you need further assistance please contact *MarineXchange* support.

MXP Database Merge Replication Import Log

Show records from 12/04/2005 To 02/06/2006 Filter

Sta...	From Installation	Date	Counter	File Name	Records	Errors
✓		06-Feb-2006		MXP_DB_23Jan2006.zip	6	0
✓		06-Feb-2006		MXP_DB_25Jan2006.zip	6	6
✓		06-Feb-2006		MXP_DB_01Feb2006.zip	6	0

Import Details

Tables: Record Error Log Import

Record

Column names in each table must be unique. Column name 'DOC_PRIORITY_ID' in table 'dbo.Ext_Req_Docs' is specified more than once

Column names in each table must be unique. Column name 'MAXIMUM_INVENTORY_QTY' in table 'dbo.IM_Location_Detail' is specified more than once

Column names in each table must be unique. Column name

Table: 01.. AddFieldToExt_Req_Docs:

Did the files generate with 0 records?

if a file was generated with 0 records, please contact *MarineXchange* support immediately.

MXP Database Merge Replication Export Log

Show records from 08/01/2015 To 10/23/2015 Filter

Sta...	For Installation	Date	Coun...	File Name	Records	Errors
✓		26-Aug-2015	518	MXP_Merge_HQ_26Aug20151906_OST_0518.zip	283	0
✓		26-Aug-2015	517	MXP_Merge_HQ_26Aug20151443_OST_0517.zip	739	0
✓		26-Aug-2015	516	MXP_Merge_HQ_26Aug20150414_OST_0516.zip	227	0
✓		25-Aug-2015	515	MXP_Merge_HQ_25Aug20151910_OST_0515.zip	0	0
✓		25-Aug-2015	514	MXP_Merge_HQ_25Aug20150405_OST_0514.zip	5738	0
✓		24-Aug-2015	513	MXP_Merge_HQ_24Aug20151909_OST_0513.zip	3449	0
✓		24-Aug-2015	512	MXP_Merge_HQ_24Aug20151222_OST_0512.zip	6096	0
✓		24-Aug-2015	511	MXP_Merge_HQ_24Aug20150403_OST_0511.zip	6037	0
✓		23-Aug-2015	510	MXP_Merge_HQ_23Aug20151909_OST_0510.zip	2945	0
✓		23-Aug-2015	509	MXP_Merge_HQ_23Aug20150401_OST_0509.zip	2781	0
✓		22-Aug-2015	508	MXP_Merge_HQ_22Aug20151906_OST_0508.zip	3721	0
✓		22-Aug-2015	507	MXP_Merge_HQ_22Aug20150410_OST_0507.zip	2755	0
✓		22-Aug-2015	506	MXP_Merge_HQ_22Aug20150119_OST_0506.zip	176010	0
✓		21-Aug-2015	505	MXP_Merge_HQ_21Aug20151910_OST_0505.zip	1950	0
✓		21-Aug-2015	504	MXP_Merge_HQ_21Aug20151407_OST_0504.zip	3723	0
✓		20-Aug-2015	503	MXP_Merge_HQ_20Aug20151900_OST_0503.zip	1778	0
✓		20-Aug-2015	502	MXP_Merge_HQ_20Aug20151704_OST_0502.zip	11470	0
✓		20-Aug-2015	501	MXP_Merge_HQ_20Aug20151406_OST_0501.zip	2421	0
✓		20-Aug-2015	500	MXP_Merge_HQ_20Aug20151117_OST_0500.zip	4022	0
✓		19-Aug-2015	499	MXP_Merge_HQ_19Aug20151904_OST_0499.zip	1221	0
✓		19-Aug-2015	498	MXP_Merge_HQ_19Aug20151401_OST_0498.zip	1153	0

Export Details

Tables: Record Error Log Import Log Export Log

Record

Column names in each table must be unique. Column name 'DOC_PRIORITY_ID' in table 'dbo.Ext_Req_Docs' is specified more than once

Column names in each table must be unique. Column name 'MAXIMUM_INVENTORY_QTY' in table 'dbo.IM_Location_Detail' is specified more than once

Column names in each table must be unique. Column name

Table: 01.. AddFieldToExt_Req_Docs:

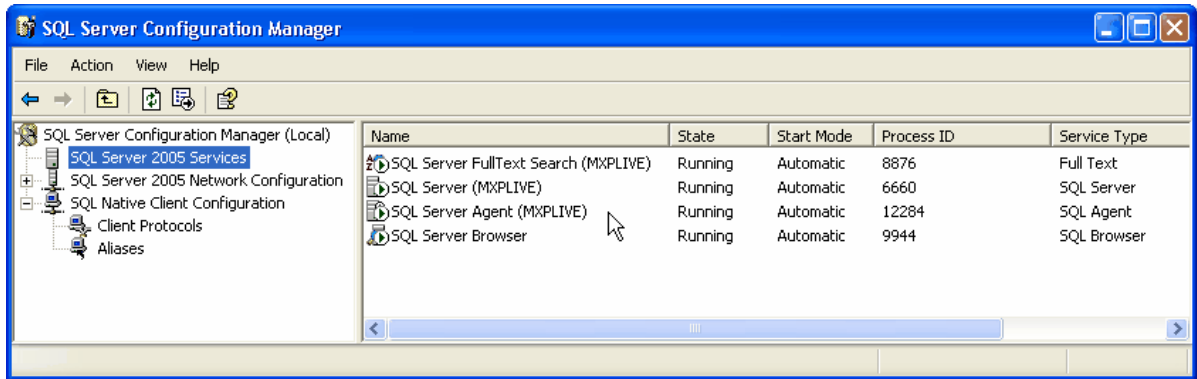
It is also necessary to check the exported files for errors and failures. Change to the **Exports** screen and view the data displayed in the **MXP Data Replication Export Log** tab. The process to check the export files is the same one as to check the imported files. Repeat the steps 1-3 outlined above.

1.4 Regular SQL check

To ensure, that the transaction log file does not grow unexpectedly it is recommended that the following regular checks take place.

Is SQL Server Agent job running?

Start SQL Server Configuration Manager from START -> Programs -> Microsoft SQL Server 2005 -> Configuration Tools



Please check at SQL Server 2005 services for service SQL Server Agent (INSTANCE) where INSTANCE can be either Local or the name of the instance MXP uses. The state of the service SQL Server Agent (INSTANCE) should be Running and the Start Mode Automatic.

Is a backup of the transaction log done?

Check the MXP backup folder, advised by MarineXchange or the person in charge of backup processes, if there is an actual file with ending .trn looking like:
MarineXProcurement_backup_yyyymmddhhhh.trn (year, month, day, hour)

1.5 Inbox Outbox

The `Inbox/Outbox` screen will display files that are currently located in the file path `C:\MXP\Interface_Files\Import\Inbox` ready to be imported and the file path `C:\MXP\Interface_Files\Export\Outbox`, files that have been exported but have not been archived.

As the import, export and archive process are all automatic then both the `Inbox` and `Outbox` should nearly always be empty of files. However when a file is currently being imported or exported they will briefly be shown here and the timer will show in yellow. Refer to [Logging in](#) for more information regarding the timer.

The `Inbox/Outbox` screen should be checked daily to ensure that both the `Inbox` and `Outbox` are empty.

Interface Jobs	Imports	Exports	Inbox/Outbox
View Interface Files	E-Commerce	FTP	Configuration
Import Export Directories			
Inbox		Outbox	
Inbox directory	C:\MXP\Interface_Files\Import\INBOX	Outbox directory	C:\MXP\Interface_Files\Export\OUTBOX
File extension masks	*.DB;*.ZIP;*.OK	File extension masks	*.DB;*.ZIP;*.OK

If in the unlikely event that a file is in the `Inbox` or `Outbox` and it has been there for some time, this will need to be reported to *MarineXchange* support

Interface Jobs	Imports	Exports	Inbox/Outbox
View Interface Files	E-Commerce	FTP	Configuration
Import/Export Directories			
Inbox		Outbox	
Inbox directory	C:\MXP\Interface_Files\Import\INBOX	Outbox directory	C:\MXP\Interface_Files\Export\OUTBOX
File extension masks	*.DB;*.ZIP;*.OK	File extension masks	*.DB;*.ZIP;*.OK
MXP_DB_04Sept2006.zip			

1.6 User Manual Change log

Version	Date	Author / Reviewer	Section \ Change
1	10/23/06	Becky May	All - Document Creation
2	10/20/07	Becky May	All - Document update to include new functionality
3	07/10/08	Michele Gullick	Updating screen shots, review and update documentation
3.1	08/29/08	Juergen Rollant	Added section SQL check
4	10/22/15	Elisabeth Stocker	All - Document update to include new functionality