



**Radio
Satellite
Integrators, Inc.**

RSI AVL User Manual

**AUTOMATIC VEHICLE LOCATION
& MOBILE DATA SYSTEMS**

Web-Based RSI AVL™

February 2010

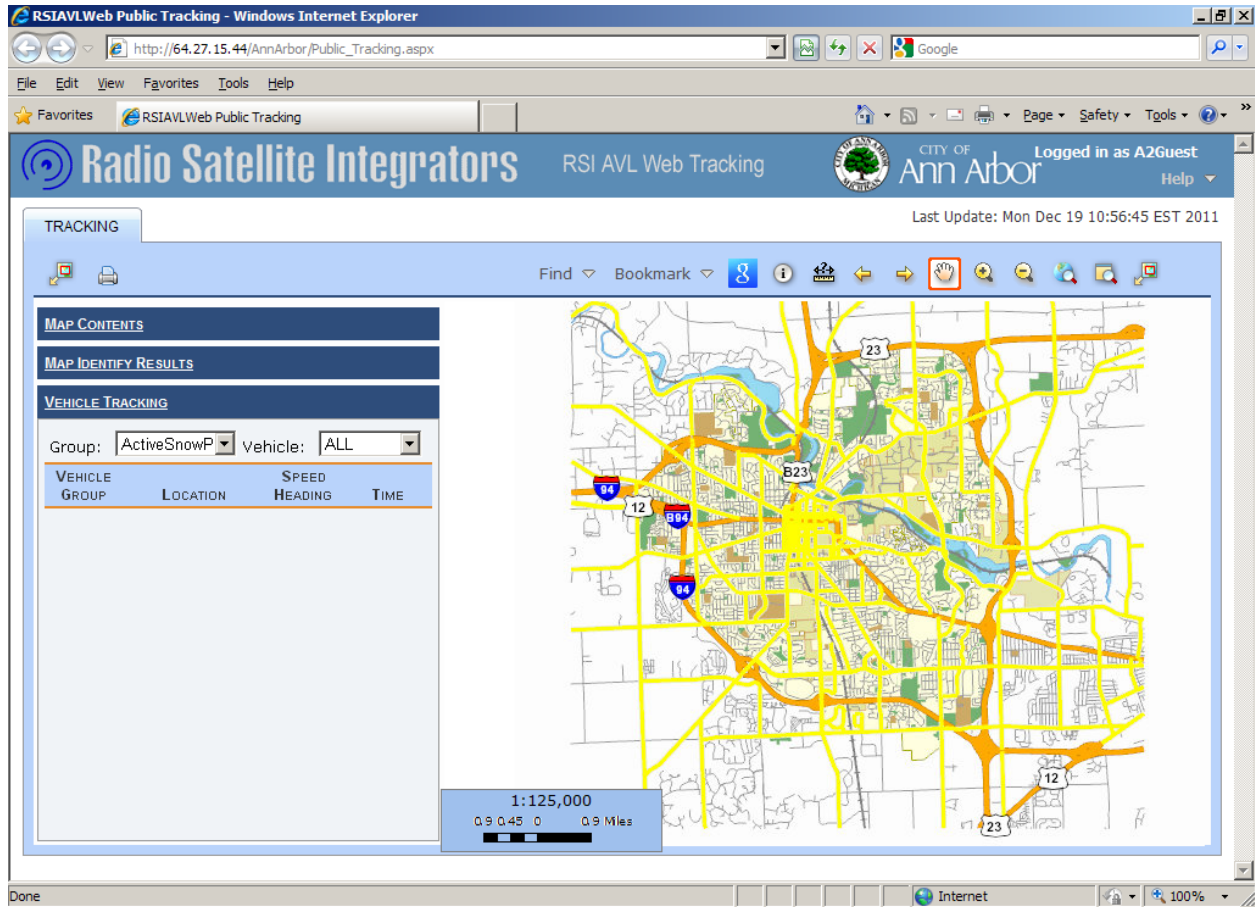
Adapted for the City of Ann Arbor, Public Services

PUBLIC USER GUIDE, AVL SNOW PLOW TRACKING, DEC. 2011

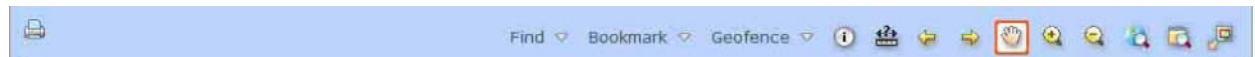
Table of Contents

Homepage Layout.....	3
Tracking	6
Tracking: Tracking (Real Time).....	6
Tool Bar.....	7
Print Button.....	9
Find.....	10
How to Find a Vehicle:	11
How to Find an Address:.....	11
Bookmark.....	12
How to Go to a Bookmark.....	13
Map Identify Tool	14
Measuring Tool	15
How to Measure a Point.....	15
How to Measure a Line.....	15
How to Measure Area in a Polygon	16
Map Back / Forward Extent.....	18
Pan	19
Zoom In / Zoom Out.....	20
How to Zoom In	20
How to Zoom Out.....	20
Full Extent.....	22
Magnifier	23
Show/Hide Overview Map.....	24

Homepage Layout



- A **Tool Bar** across the top of the map possesses all map manipulation and query functionality for users:



- A **Legend** on the left hand side of the screen with three sub sections: The *Vehicle Tracking* Table displays the tabular location and status of your vehicles (clicking on the vehicle name in the table will zoom and center the map to that vehicle on the map); *Map Contents* displays the different GIS layers of your map data; and *Map Identify Results* displays the information identified and saved using the Map Identify tool:

MAP CONTENTS

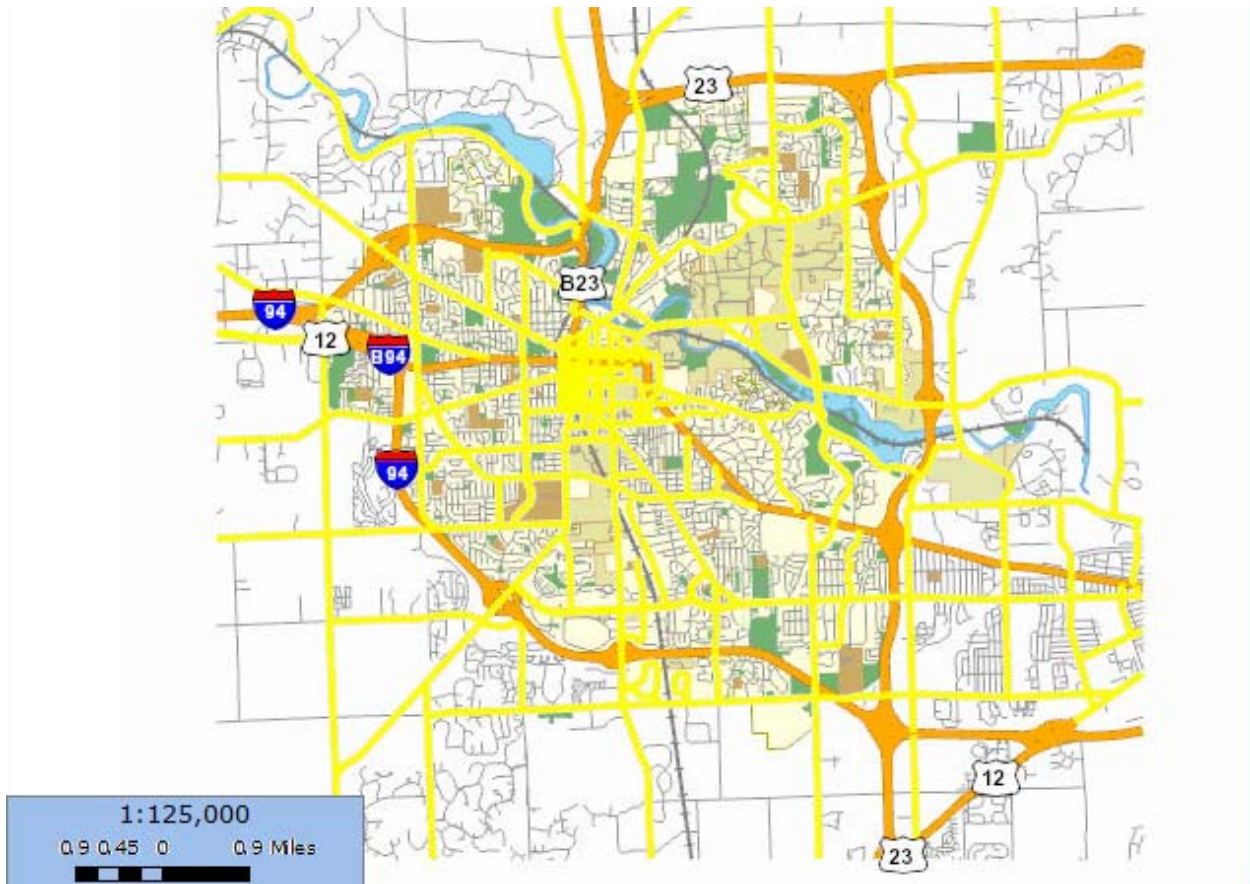
MAP IDENTIFY RESULTS

VEHICLE TRACKING

Group: Vehicle:

VEHICLE GROUP	LOCATION	SPEED HEADING	TIME
2281 (ANNARBOR)		0 N	12/13/2011 1:58:57 PM
2285 (ANNARBOR)	1805 GLENWOOD RD 48104	0 NE	12/19/2011 12:06:12 PM
2288 (ANNARBOR)	2108 WALLINGFORD RD 48104	0 N	12/19/2011 9:15:36 AM
2506 (ANNARBOR)		0 SE	12/16/2011 12:43:58 PM
2507 (ANNARBOR)	3325 WASHTEAW AVENUE 48104	0 W	12/19/2011 12:32:07 PM
2556 (ANNARBOR)		0 N	12/19/2011 12:52:14 PM
2557	2108	0	12/19/2011

- A **Map Display** (adjacent to the legend) of your service area including the most recently reported location of all the vehicles in active City fleet.



Tracking

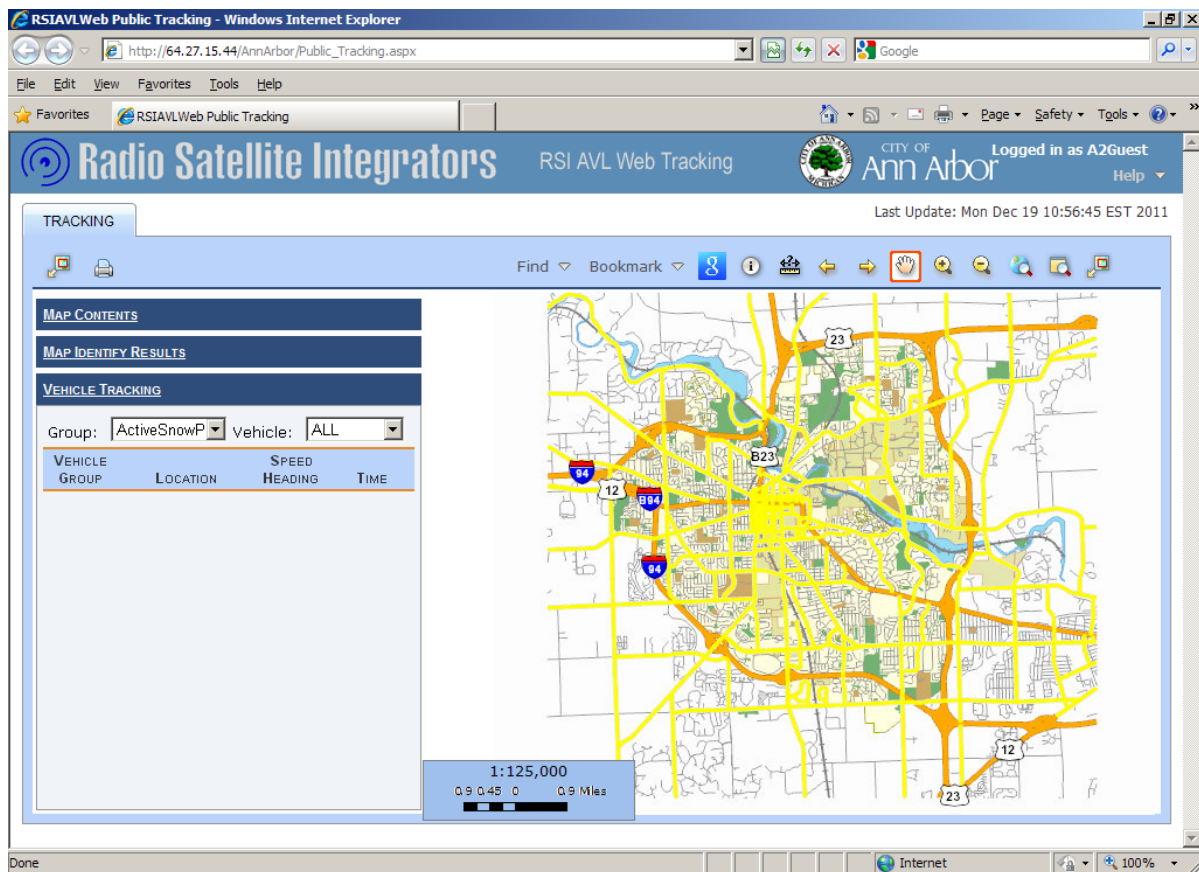
The Tracking function is where all the current vehicle data, will be displayed, viewed, edited and manipulated by the user.

Tracking: Tracking (Real Time)

The first tab of the Tracking function is Real Time Tracking. The Tracking tab provides current vehicle information in both geographical and tabular formats, along with a tool bar for map manipulation. Vehicle direction is indicated by the orientation of the vehicle symbol. The default map orientation is North to the top of the screen.

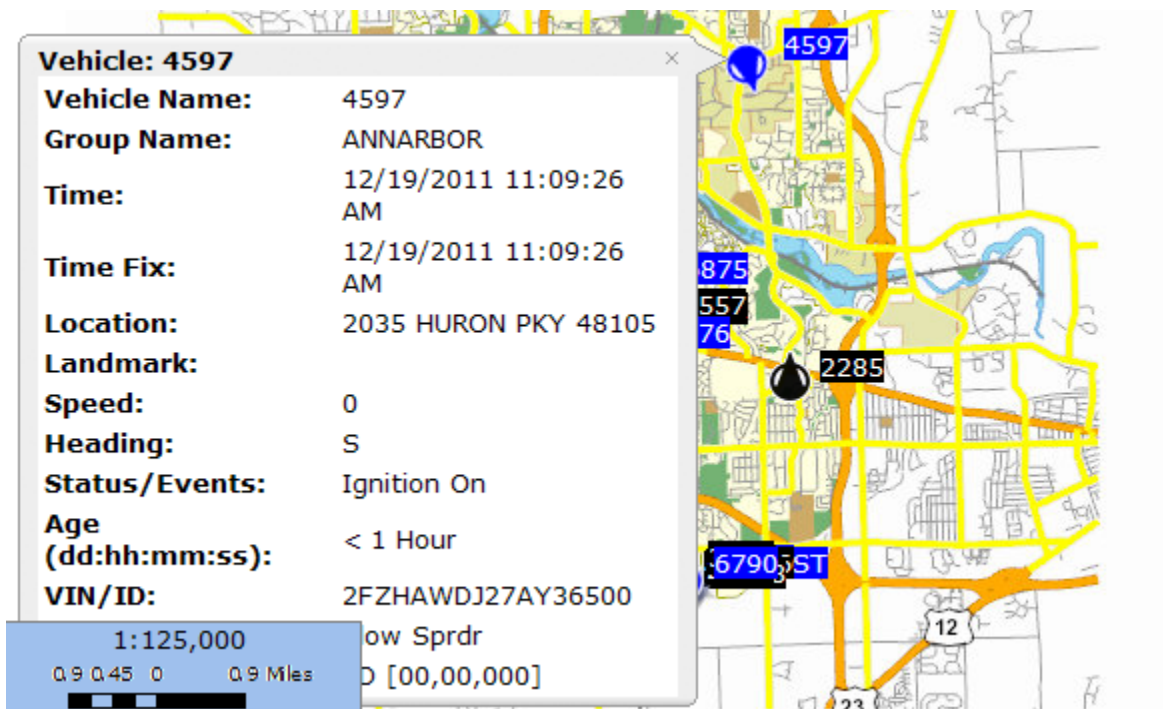
The major components of the Tracking tab below are:

- The Tool Bar for map manipulation and query functionality (Light blue bar across the top of the map and legend)
- The Map Legend with sub sections listing all vehicles, map contents, and other data(left column of page)
- The Map Window of your service area

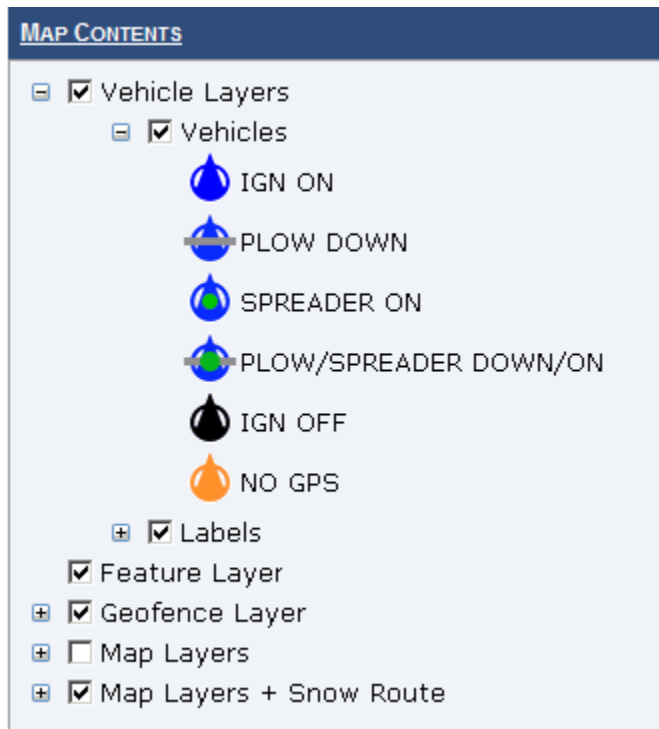


RSI AVL Starting Points

- When you click on a specific vehicle name in the Vehicle Tracking Table (within the Legend on the left), the map view will automatically pan and center on that specific vehicle.
- When you hover your mouse cursor over a vehicle icon in the map window display, the vehicle icon will become highlighted/enlarged to signal which vehicle you have selected. That specific vehicle's label will also be highlighted. If you click on that vehicle label it will expand to show you additional information about that vehicle including: address, speed, heading, status, and age of the data.



Your specific color codes and iconology can be found in the Legend > Map Contents at the left side of the screen. Typically black means ignition off and blue means ignition on. Icons will gradually fade based on the age of the location fix.




The various map layers will adjust (become visible) dynamically with your zoom level.

Tool Bar





The Tool Bar possesses all map manipulation and query functionality for users.

 Print Map

 Find Address or Vehicle on map



 Create Bookmark or Go To Existing Bookmark (used to save a map view)

 Map Identify Tool – will identify any vehicle, landmark, address on the map


 Measure Tool –measure the distance between any two points, vehicles, locations, etc.

  Map Back Extent (Go to Previous View) / Map Forward Extent (Go to Next View)

 Pan

  Zoom In / Zoom Out – Can also be performed with the scroll wheel on the mouse.

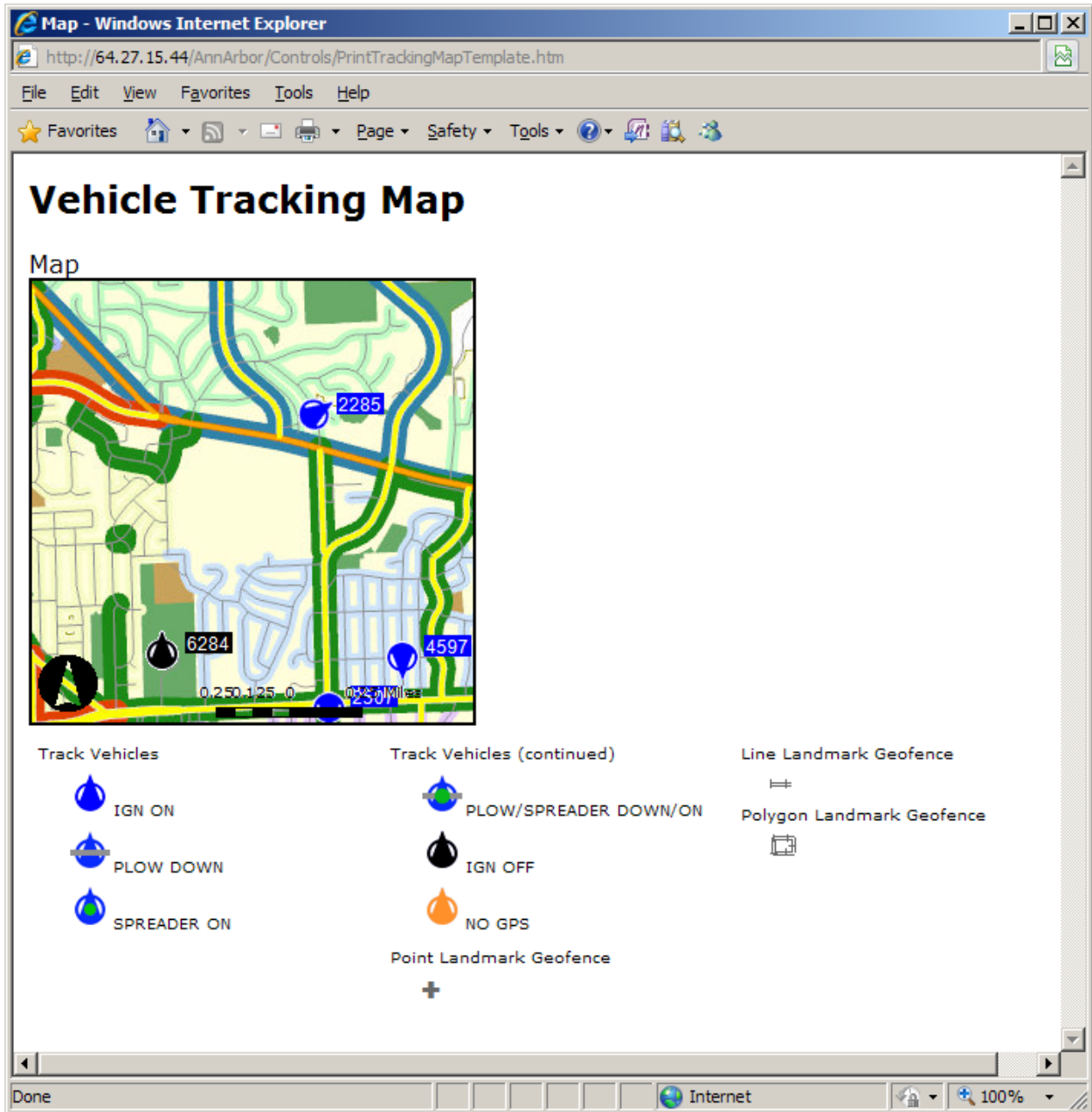
 Full Extent – Shows map in its entirety

 Magnifier – magnifies any point on the map in a new window. Select the tool and center new window over area of interest and a zoomed view will appear.

 Show/Hide Overview Map

Print Button

This button allows users to Print the view (map only) that is currently shown in the Tracking Tab. Click on the Print Button, and a new window will open with the Map Only for users to print. Click on “File” then ‘Print’ to do this or close the new window to change view for another map to print.



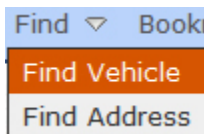
Find



The Find Button gives users the ability to locate an address or vehicle, along with the capability to identify the closest available vehicle(s) to any entered point, address, or incident.

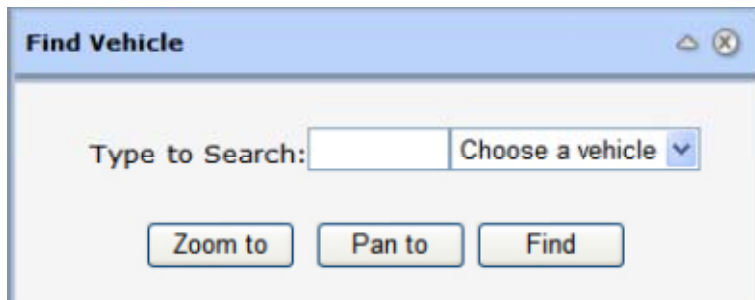
How to Find a Vehicle:

Scroll over the Find Drop Down Menu and a list of options will appear. To locate a vehicle,



click on Find Vehicle.

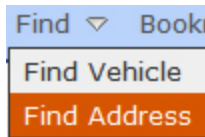
The Find Vehicle menu will appear. Enter in the vehicle number you wish to find in the blank space next to "Type to Search:" or search for the vehicle you wish to find by clicking on the drop down menu labeled "Choose a vehicle." The buttons below the search menu are manipulation tools for users to find, zoom and pan to a particular vehicle on the Map. To close this menu, click on the X in the upper right hand corner of the menu.



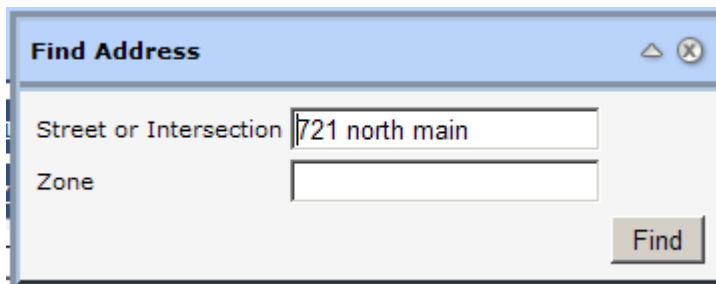
How to Find an Address:

Scroll over the Find Drop Down Menu and a list of options will appear. To locate an address,

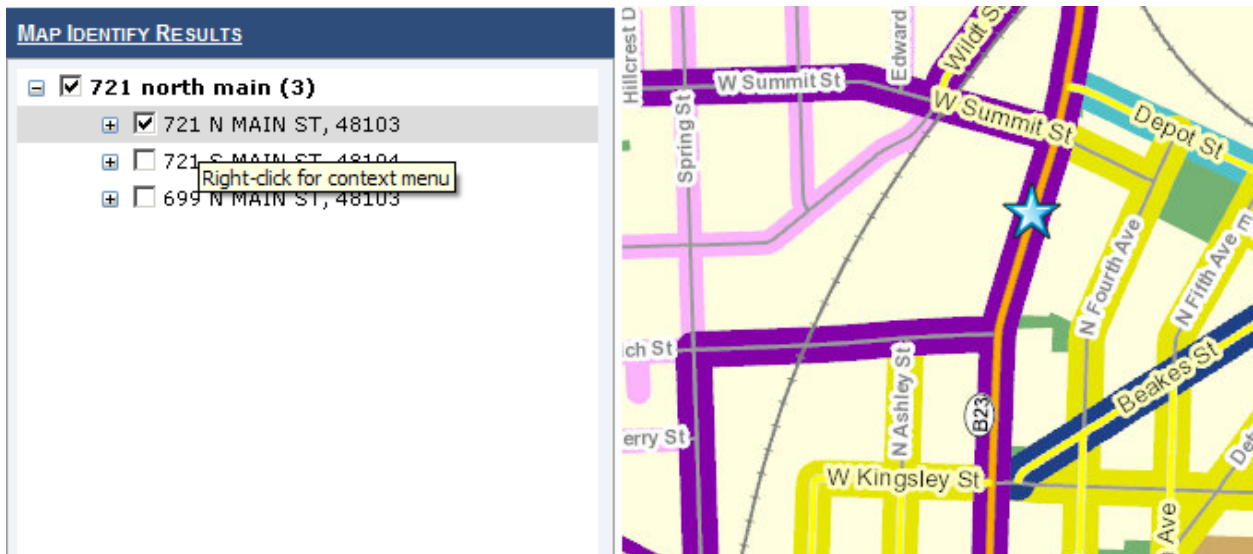
click on Find Address.



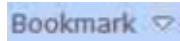
A Find Address Pop-Up will appear. Enter in the address you wish to find in the blank space beside “Street or Intersection” and then click the “Find” button. To close this menu, click on the X in the upper right hand corner of the menu.



The search will find the possible addresses and display them up in the ‘Legend’ > “Map Identify Results”. Select the best result and right click to bring up a context menu and either “pan to” or “zoom to”. The Map will update and show a green star at the address.



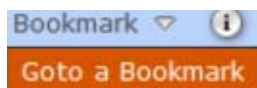
Bookmark



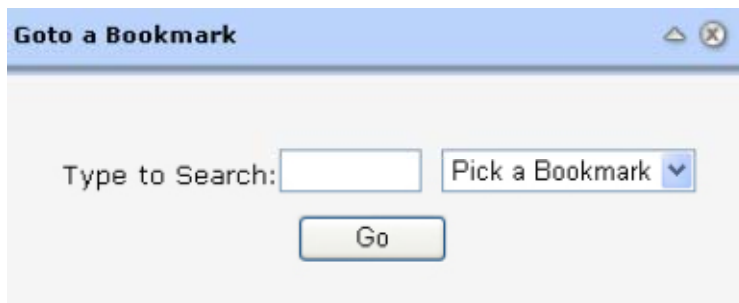
The Bookmark Button gives users the ability to create and name a bookmark (aka Predefined Map View/Zoom Level) of the current view of the map or view past bookmarks for viewing.

How to Go to a Bookmark

To go to an existing bookmark or predefined map view, scroll over the bookmark tab and select "Go To a Bookmark"



Enter in the name of the bookmark or click on the Drop Down Menu and select from the options listed. Then click on the Go button. The Map will update to display the desired bookmark. To close this menu, click on the X in the upper right hand corner of the menu.



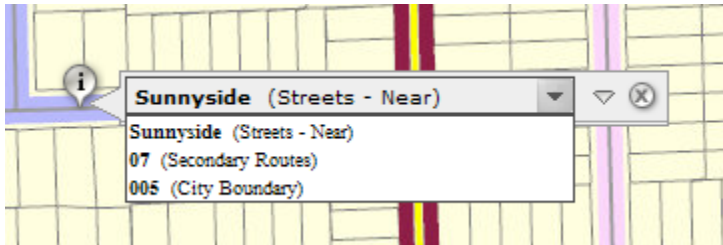
Map Identify Tool



The Map Identify Tool will identify any vehicle, landmark, address, or other map layer element on the map display.

How to Use

Click on the Identify button. Then scroll to the point on the map to identify. Click ONCE on that point. A side bar will pop up containing point information. To view more information, click on the drop down menu next to the X.



The side bar will expand to contain attribute data for the specified point. To close this menu, click on the X in the upper right hand corner of the menu. To add this point to your map viewing legend, click on "Add to Results" in the bottom left hand corner of the menu.

Measuring Tool



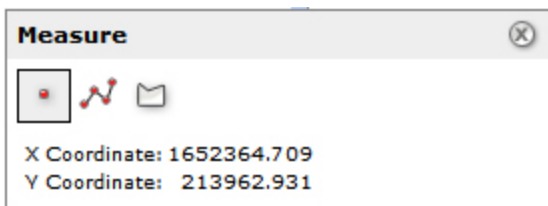
The Measuring Tool will measure any point (latitude, longitude), line segment (from one vehicle or point to another), or polygon (total surface area) on the map display.

How to Measure a Point

Click on the measuring tool. A pop up will appear on the map that gives you the option to measure a point, line or polygon. To find the latitude and longitude for any given point of interest or vehicle, click on the red point on the left side of the pop up menu.



Once the red dot has a box around it, you know it's in point mode. Click on the map at the point you wish to measure. The measure pop up will update to display the coordinates for the specified point on the Map. To close this menu, click on the X in the upper right hand corner of the menu.

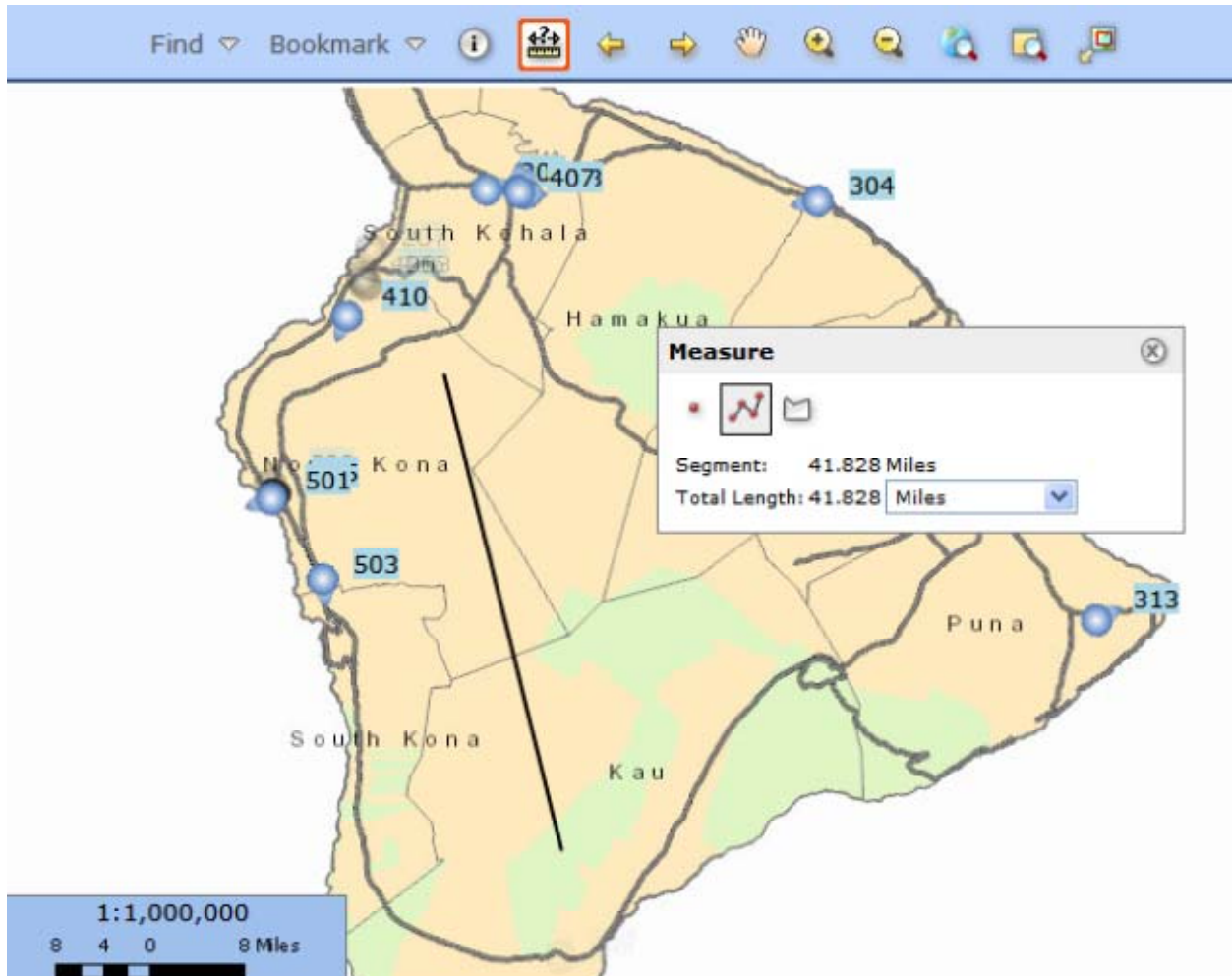


How to Measure a Line

Click on the measuring tool. A pop up will appear on the map that gives you the option to measure a point, line or polygon. To find the distance from any one point on the map to another, click on the middle button of the pop up menu.

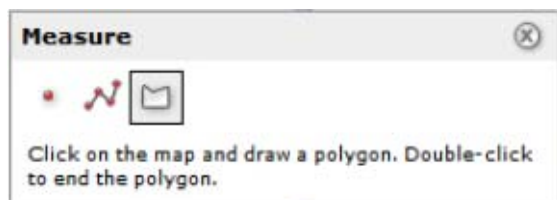


Click once on the Map and move the cursor to the next point to measure. To add another point, click the point once. When finished, double click on the last point to calculate distance. Results for line measurements can be converted into miles, feet, kilometers and meters. To close this menu, click on the X in the upper right hand corner of the menu.

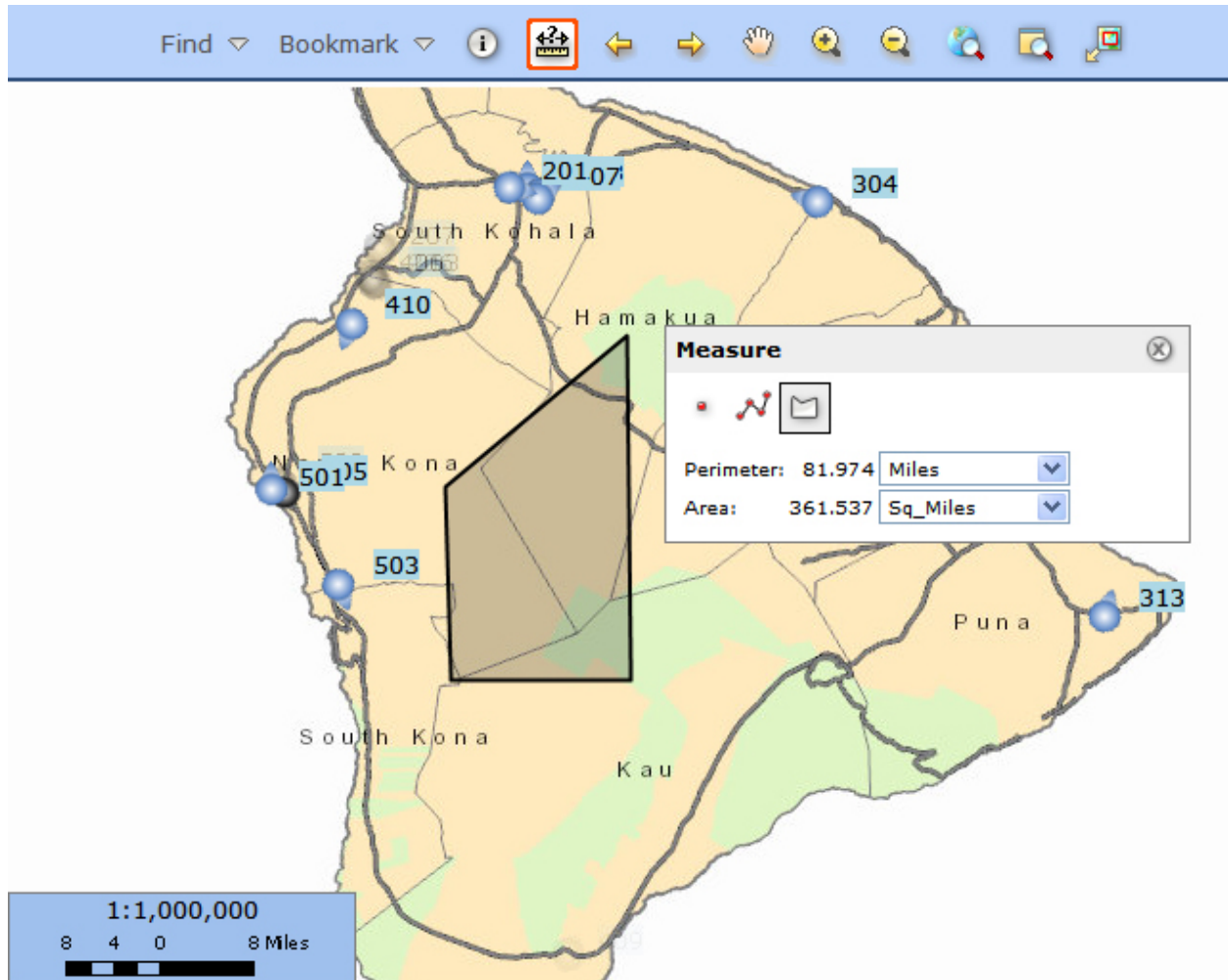


How to Measure Area in a Polygon

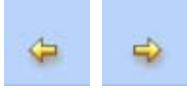
Click on the measuring tool. A pop up will appear on the map that gives you the option to measure a point, line or polygon. To measure the perimeter and/or square miles for any area of space, click on the third button of the pop up menu.



Click once on the Map and move the cursor to the next point to measure. To add another point, click the point once. When finished, double click on the last point to calculate distance. View options in the Polygon Measuring tool include measurements in feet, kilometers, meters, miles, acres, etc. To close this menu, click on the X in the upper right hand corner of the Measure menu.



Map Back / Forward Extent



Map Back Extent (Go to previous view) / Map Forward Extent (Go to next view)

How to Use

To go forward/back to a previous view of the Map, click on the associated arrow button and the Map will adjust accordingly.

Pan



The Pan feature allows users to move the map with one click using a “Grab and Drag” function with the hand tool.

How to Use

Click on the Pan icon. Click on the map at any point and hold down while you move the map in the direction you want to pan to (grab and drag) You can also zoom in with the Pan feature. To do this, double click on the point you wish to zoom into and the map will adjust accordingly.

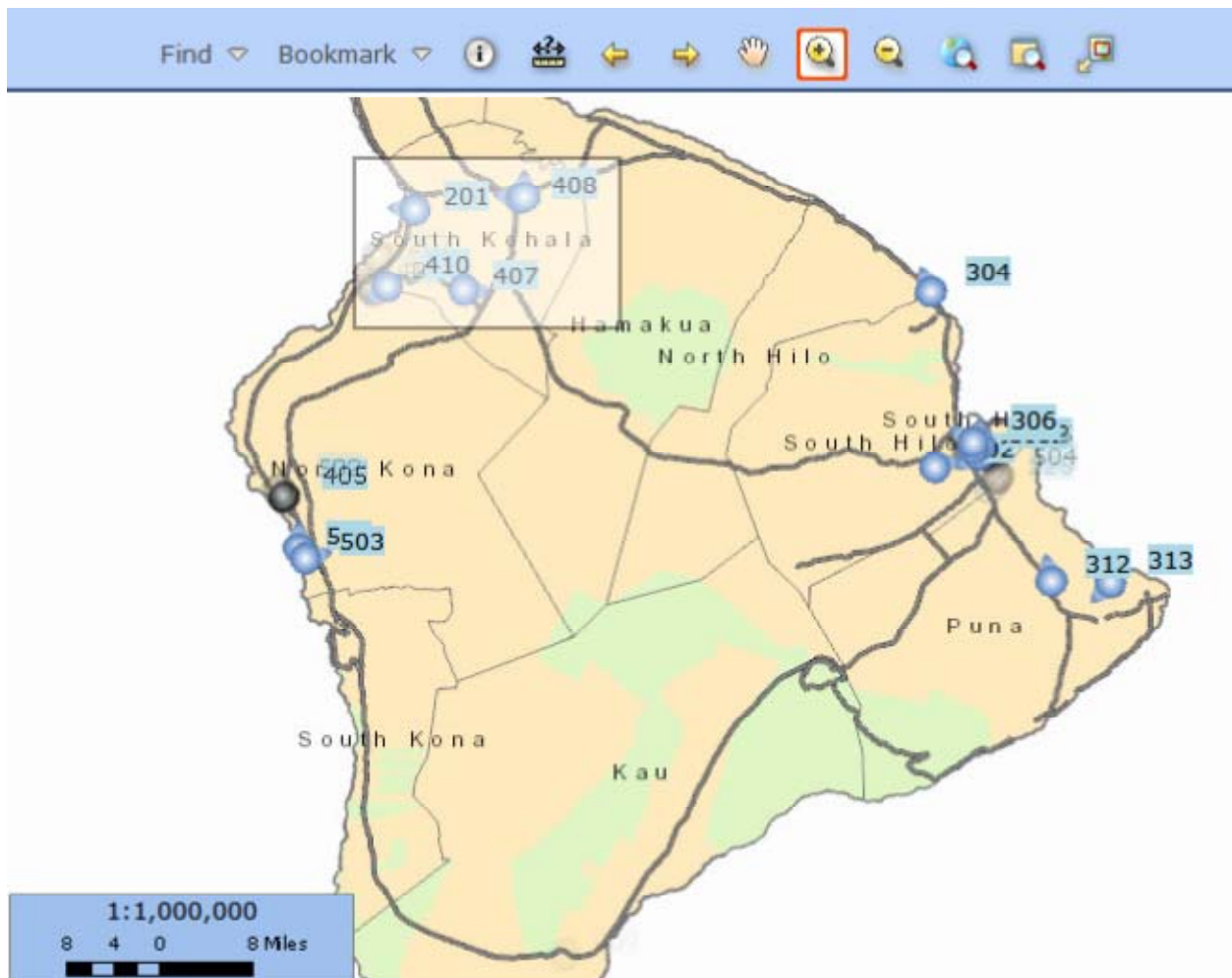
Zoom In / Zoom Out



Zoom feature allows users to zoom to any point, location or vehicle on the Map or zoom out of any area.

How to Zoom In

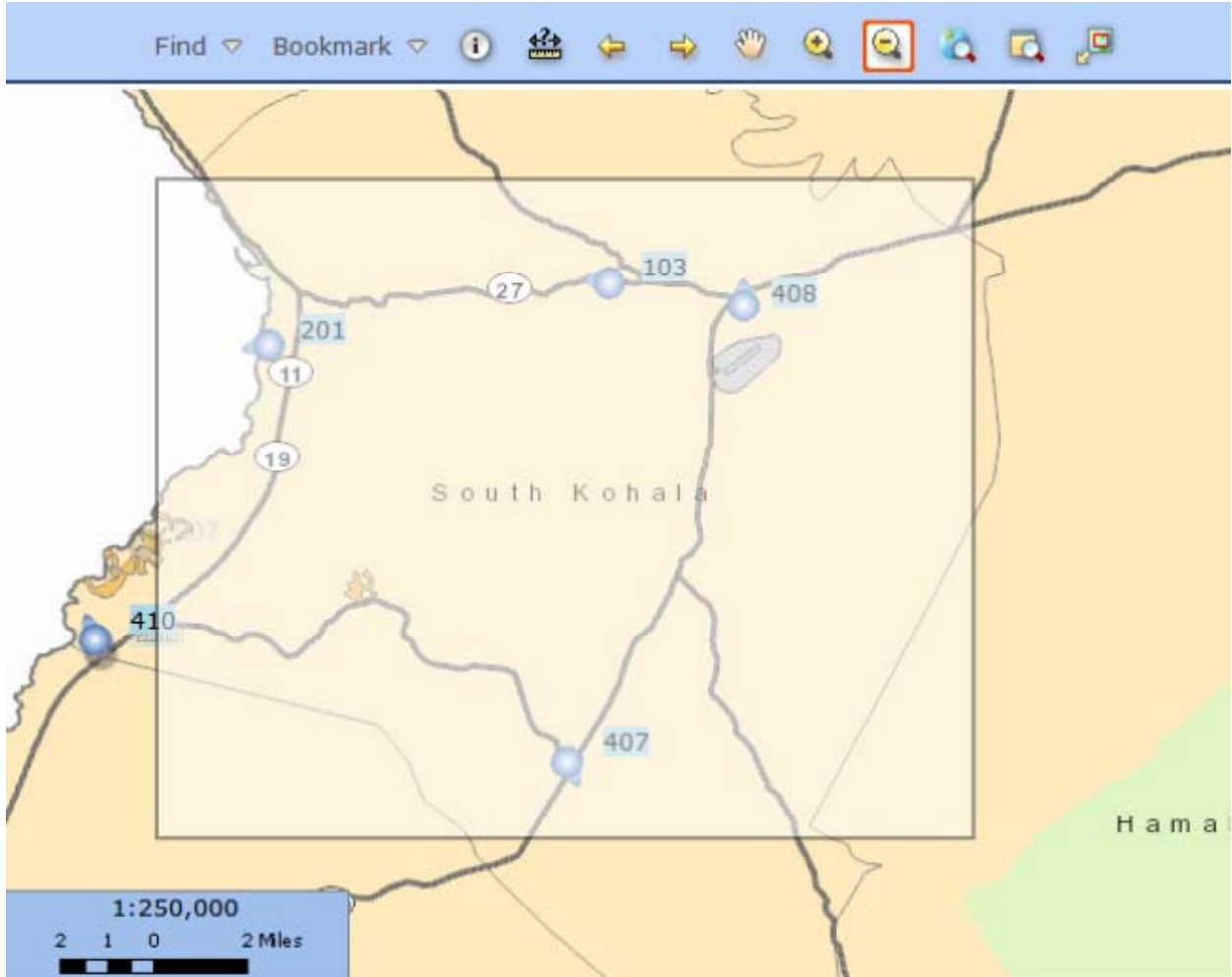
Click on the Zoom In button. Select a point and hold down on the left clicker of your mouse and drag the rectangle selection to create an area to zoom to. When you release the left clicker, the display will zoom in to the designated area.



How to Zoom Out

Click on the Zoom Out button. Hold down on the left clicker on your mouse to select the area you wish to zoom out of. When you let go of the left clicker, the display will zoom

out centered on the selected area. The smaller the area you select, the more the view will zoom out. To zoom out just a little, select a larger area.



Full Extent



The Full Extent Icon returns the map to full extent

How to Use

Click on the Full Extent button in the menu. Map will update to display the full extent of your area of operations.

RSIAVLWeb Public Tracking - Windows Internet Explorer

http://64.27.15.44/AnnArbor/Public_Tracking.aspx

File Edit View Favorites Tools Help

Radio Satellite Integrators RSI AVL Web Tracking CITY OF Ann Arbor Logged in as A2Guest Help

TRACKING Last Update: Mon Dec 19 10:56:45 EST 2011

Find Bookmark

MAP CONTENTS

MAP IDENTIFY RESULTS

VEHICLE TRACKING

Group: ActiveSnowP vehicle: ALL

VEHICLE GROUP	LOCATION	SPEED	HEADING	TIME
---------------	----------	-------	---------	------

1:125,000
0.9 0.45 0 0.9 Miles

Done Internet 100%

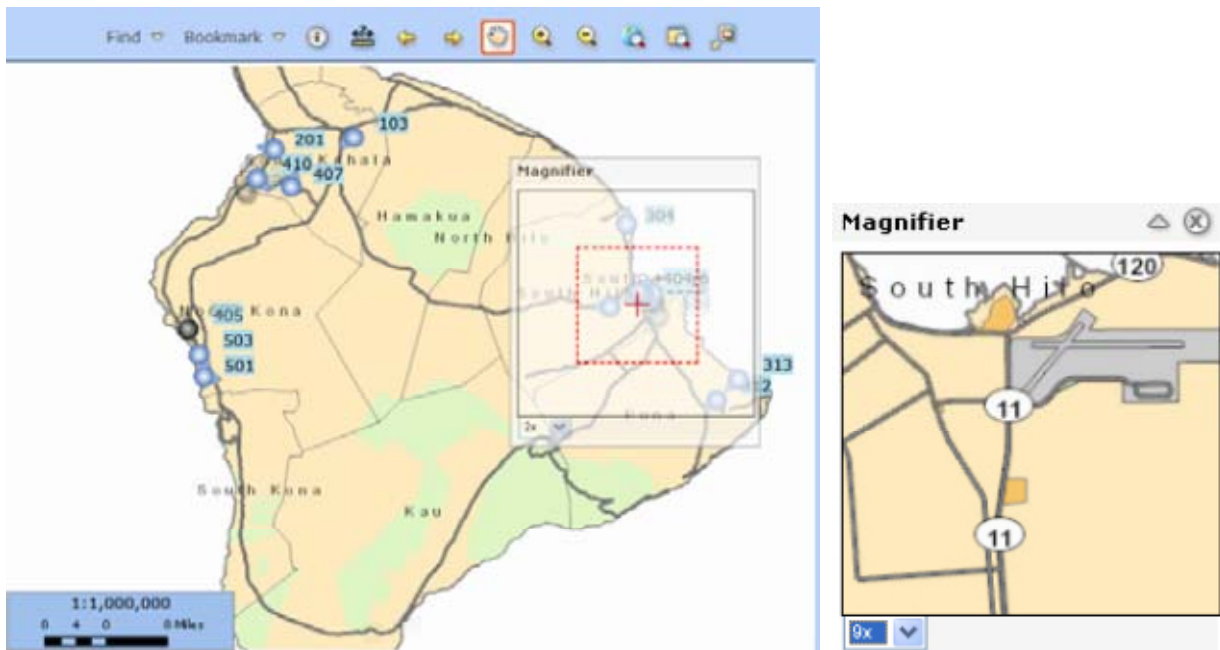
Magnifier



The Magnifier Tool will zoom in to a point on map in new window.

How to Use

Click on the Magnifier button. Using the mouse, click on the Magnifier Box tool bar and drag the box. The box will update to show a zoomed in view of the spot.



Show/Hide Overview Map



The Show/Hide Overview Map icon allows users to turn the Overview Map on and off. The tool allows the user to see what part of the overall map they are currently viewing/zoomed to.

How to Use

Click on the Show/Hide Overview icon to show the map overview in a small map window. To hide this overview, click on the Show/Hide Overview again.

