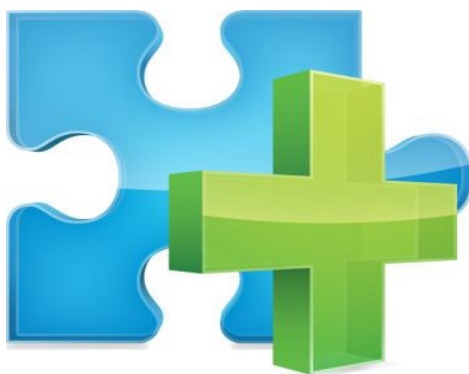




**Omnesys Technologies Pvt. Ltd**



**NEST PLUS**

**Simulated Trading User Manual  
(Sim Trade)**

**July, 2011**

## Document Information

	DOCUMENT CONTROL INFORMATION
DOCUMENT	Simulated Trading(Sim Trade) user manual.
VERSION	
VERSION NOTES	This document explains about the features and functionality of Simulated Trading.
KEYWORDS	

## **Proprietary Notice**

This document contains confidential information of Omnesys Technologies Pvt Ltd, which is provided for the sole purpose of permitting the recipient to evaluate the deployment document submitted herewith. In consideration of receipt of this document, the recipient agrees to maintain such information in confidence and to not reproduce or otherwise disclose this information to any person outside the group directly responsible for evaluation of its contents, except that there is no obligation to maintain the confidentiality of any information which was known to the recipient prior to receipt of such information from Omnesys Technologies Pvt Ltd, or becomes publicly known through no fault of recipient, or is received without obligation of confidentiality from a third party owing no obligation of confidentiality to Omnesys Technologies Pvt Ltd.

## Simulated Trading User Manual



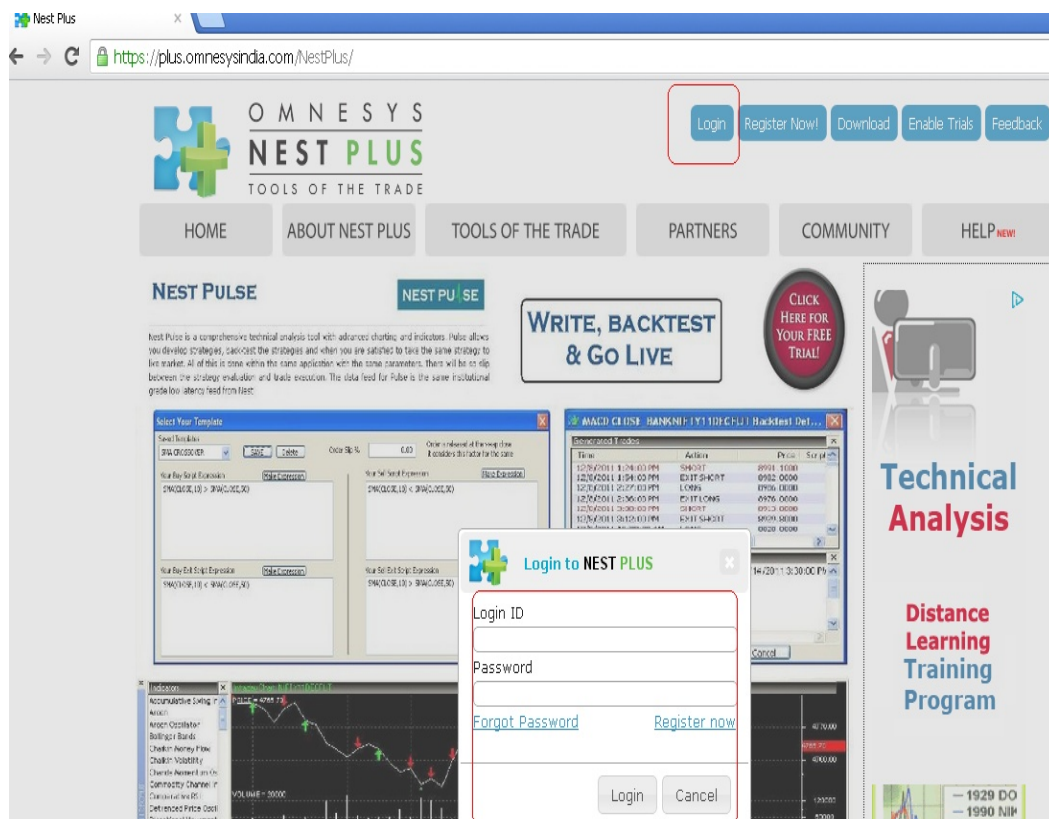
Simulated or SIM Trade is an educative tool that simulates live market prices in a virtual environment that allow users to learn and understand the nuances of trading.

### **GETTING STARTED WITH SIM TRADE:**

User needs to have a Nest Plus or Nse Paathshaala login account to use Sim Trade.

New registration needs to activate the Nest Plus or Nse Paathshaala account using the activation link sent on registered email id.

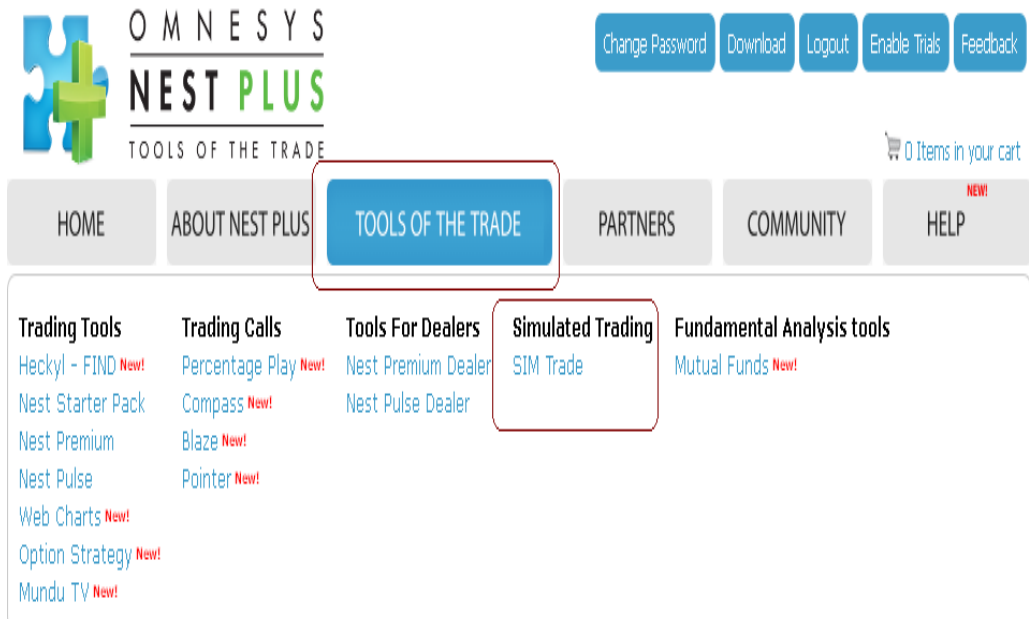
To use Simulated or SIM Trade, the user needs to log-in to Nest Plus Website @ <https://plus.omnesysindia.com/NestPlus/>



## Simulated Trading User Manual



Go to Sim Trade listed under Tools of The Trade.



## Simulated Trading User Manual



Nest Plus : - Paper Trading

https://plus.omneysindia.com/NestPlus/Trade/land.jsp?prd=nest\_pt

HOME ABOUT NEST PLUS TOOLS OF THE TRADE PARTNERS COMMUNITY HELP NEW!

Settings Set Watch List Add Scripts Option Calculator Option Strategy

▲ Watch List

Select Watchlist: sunil

Seg	Security	LTP	%Chg
NFO	MINIFTY12JULFUT	5328.00	0.09
NSE	ABB-EQ	805.65	0.91
NSE	IOB-EQ	85.00	0.35
NSE	KOVAL-BE	95.00	4.40
NSE	HDFC-EQ	674.15	-0.21
NSE	HINDUNILVR-EQ	441.00	0.70
NSE	TRIDENT-EQ	10.20	1.49
NSE	ANSALAPHEQ	30.20	5.23
NSE	AANJANEYA-EQ	485.00	-0.35
NSE	ZODJRDWKJ-EQ	25.30	1.20
NSE	LITL-EQ	16.35	3.15
NSE	3IINFOTECH-EQ	12.65	3.27

▲ Order Book

No Open Orders

▲ Index Watch

Index	Current	Change	%Change
BANK Nifty	10543.90	14.45	0.14
CNX 100	5205.25	8.40	0.16
CNX IT	6062.35	-12.40	-0.20
CNX Midcap	7553.35	48.90	0.65
CNX Nifty Junior	10375.30	40.15	0.39
S&P CNX 500	4224.45	11.40	0.27

▲ Position Book

Position Type: Intra-Day Refresh

Security	Seg	Net Qty	Net Value	Sell Avg. Price
ABB-EQ	NSE	1	-803.00	00.00
MINIFTY12JULFUT	NFO	20	-106340.00	00.00
<b>Total Value</b>			107143.00	

▲ Your Account

Details	Value
Initial Corpus	500000.00
Gain/Loss (Realized Profit/Loss)	-60857.80
Holding Value	2679.23
F & O Margin	12877.00
Currency Margin	00.00
Available Cash	423585.97

Online - Click here to chat

### Facilities in Sim Trade:

1. Each user account shall be provided **5,00,000** as virtual cash.
2. Users can place orders in 3 segment i.e. Equity (CM), NFO and Currency Derivatives(CDS)
3. Users can place Market Orders and Limit Orders.
4. Market orders shall be executed promptly.
5. Limit orders will get executed at the price entered by the user. A Buy order will get executed if the limit price is greater than or equal to the LTP and a Sell order will get executed if the limit price is less than or equal to the LTP.

6. Limits orders shall move to the “Order Book”. Users can modify and cancel the order till the order is lying open in the order book.
7. Once the order is executed the same shall move from “open” order book to “position” book.
8. Cash shall be appropriated for each position taken by the user.
9. For Orders that are lying open, the amount shall be blocked and shall display as “holding” value in “Account Summary”.
10. Users cannot place orders for securities more than the Cash limit available after taking into account the orders pending for execution.
11. Users also cannot initiate a sell order without having holding positions(For Equity).
12. If after placing an order, the order does not appear in the order book after 30 secs, please check the screen to view the status of the order
13. Profit & Losses shall be marked at the close of each position in CM and at end of the day on outstanding derivatives positions.

**Market Close: At the end of trading day, the virtual market shall close and outstanding positions shall be carried forward to the next trading date. Users can log-in the next day to begin trading.**

The timings are as under:

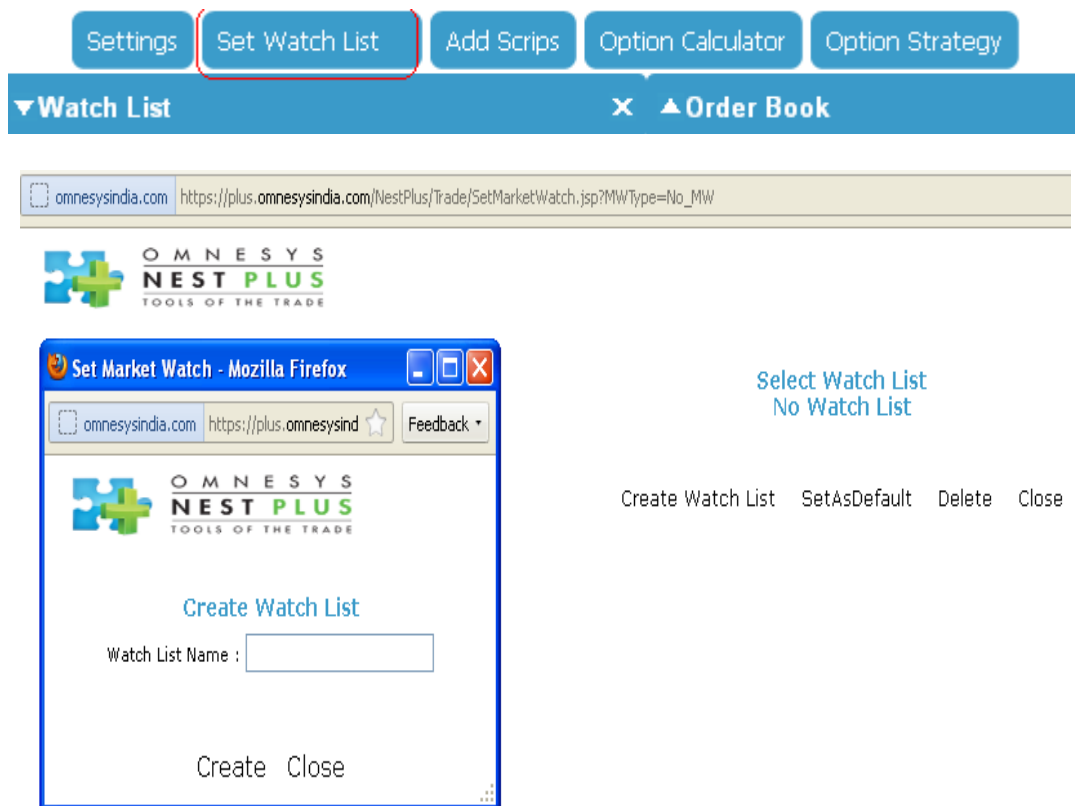
Segment	Open	Close
Equity	9.15 am	3.30 pm
Derivative	9.15 am	3.30 pm
Currency	9.00 am	5.00 pm

## USER NAVIGATION:

### Creating a Watch List:

To start trading you need to set up a watch list to be able view the prices of securities. A max of 30 securities can be added to 1 watch. Only 1 watch is active at any point of time, Hence to be able to monitor the prices the watch should be **"Set as default"**.

Select the button appearing in the top row as indicated in the image below.

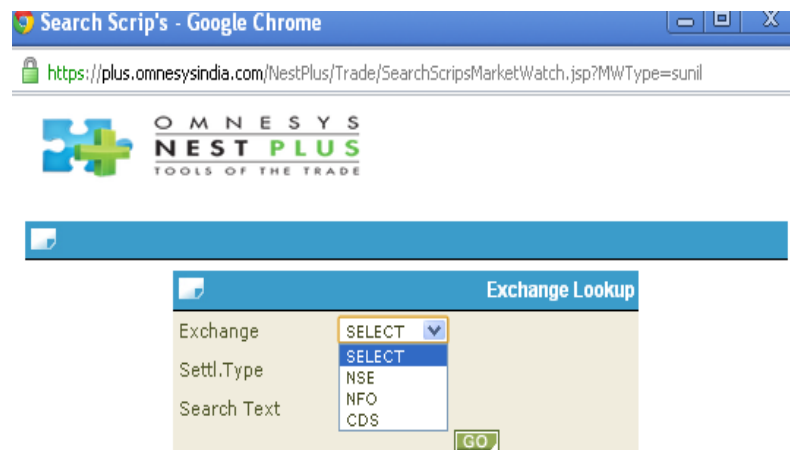


Provide a name for the watch, that does not contains spaces or special characters. Click on Create.

## Adding Securities to the watch List:

You can add securities immediately after creating a watch list or you may add securities to the “default” watch list by selecting **“Add Scripts”** from the buttons available in the top row. Select “Equity” for Cash market, “F&O” for “Equity Futures & Options” and “CDS” for currency derivatives and interest rate futures. Interest Rate Futures are available within CDS option.

Settings Set Watch List **Add Scripts** Option Calculator Option Strategy



Search Scrip's - Google Chrome

<https://plus.omnesysindia.com/NestPlus/Trade/SearchScriptsMarketWatch.jsp?MWType=sunil>

OMNESYS  
**NEST PLUS**  
TOOLS OF THE TRADE

Exchange Lookup

Exchange: SELECT

Settl.Type: SELECT

Search Text: NSE, NFO, CDS

GO



**Add NSE-EQ Scrip - Google Chrome**

<https://plus.omnesysindia.com/NestPlus/Trade/Nest3ShowScripsNseBse.jsp?MWType=sunil>

**OMNESYS NEST PLUS TOOLS OF THE TRADE**

**Add NSE-EQ Scrip**

**Company Name**

- 20MICRONS-EQ
- 3IINFOTECH-EQ
- 3MINDIA-EQ
- AZZMES-EQ
- AANJANEYA-EQ
- AARTIDRUGS-EQ
- AARTIIND-EQ
- AARVEEDEN-EQ
- ABAN-EQ
- ABB-EQ

**Selected Company**

Add >>

<< Remove

Add to Market Watch

**Exchange Lookup**

Exchange: NSE

Settl.Type: ALL

Search Text:

GO

Securities shall appear in the default watch only after clicking on the “**Add to Market Watch**” button.

## Deleting securities from the market watch:

Click on the security and the row shall get selected. Right click and select the "Remove Scrip" option to delete the security from a watch list.

Settings
Set Watch List
Add Scrips
Option Calculator
Option Strategy

▲ Watch List

Select Watchlist
sunil

Seg	Security				LTP	%Chg
NSE	ABB-EQ	B	S		800.95	0.32
NSE	IOB-EQ	B	S		86.35	1.95
	Remove Scrip	B	S		95.00	4.40
	Place Buy Order	B	S		675.00	-0.09
	Place Sell Order	B	S		441.00	0.70
	Get Quote	B	S		10.05	0.00
	MBP	B	S		30.35	5.75
	Intra-day Chart	B	S		25.30	1.20
NSE	LITL-EQ	B	S		16.45	3.79
NSE	3IINFOTECH-EQ	B	S		12.70	3.67

▲ Order Book

No Open Orders

▲ Position Book

Position Type : Intra-Day
Refresh

Security	Seg	Net Qty	Net Value	Sell Avg. Price	Buy Avg. Price	LTP
ABB-EQ	NSE	1	-803.00	00.00	803.00	805
MINIFTY12JULFUT	NFO	20	-106340.00	00.00	5317.00	5326
Total Value			107143.00	Total M		

## Set to default to view live prices:

User can create multiple of watch lists. To change the default watch list on the page, simply select the watch list created from the table and select the one desired. The selected watch row shall appear banded. Click on **“Set as default”**. To change, select another row and click “Set as default”. This allows users to toggle between watch lists.

**Select Watch List**

Market Watch List
sunil
<b>test</b>

[Create Watch List](#)   [SetAsDefault](#)   [Delete](#)   [Close](#)

## Toggling between watch lists:

[Settings](#)   [Set Watch List](#)   [Add Scrips](#)

▲ Watch List

Select Watchlist sunil ▼

Seg ▼	Security
-------	----------

sunil  
test

## Watch list view:

The default watch shall appear in the left hand side of the page and shall display the live prices.

Settings
Set Watch List
Add Scrips
Option Calculator
O

**▲ Watch List**
X

Select Watchlist
sunil
▼

Seg ▼	Security ◇				LTP ◇	%Chg ◇
NSE	ABB-EQ	B	S	📈	802.00	0.45
NSE	IOB-EQ	B	S	📈	86.70	2.36
NSE	KOVAL-BE	B	S	📈	95.00	4.40
NSE	HDFC-EQ	B	S	📈	674.70	-0.13
NSE	HINDUNILVR-EQ	B	S	📈	441.45	0.80
NSE	TRIDENT-EQ	B	S	📈	10.10	0.50
NSE	ANSALAPI-EQ	B	S	📈	31.50	9.76
NSE	AANJANEYA-EQ	B	S	📈	486.00	-0.14
NSE	ZODJRDWAKJ-EQ	B	S	📈	25.30	1.20
NSE	LITL-EQ	B	S	📈	16.45	3.79
NSE	3IINFOTECH-EQ	B	S	📈	12.75	4.08

## Functions available in watch list:

Select a row by clicking on it (**the pointer arrow should display**). After the row is selected (**should appear in blue**) right click on it to see the following option .

1. Remove Scrip : to remove a security from the watch list
2. Place Buy Order: to place a **buy order** – same as “B” in the watch list.
3. Place Sell Order: to place a **sell order** – same as “S” in the watch list.
4. Get Quote : to view the trade information
5. MBP : The MMBP page displays the additional trade information like Weighted Average Price, Volume and Trades for the security and the order book depth for Best 5 bids and offers. Scroll down to see the best 5 bids/offers in the Market.

Settings Set Watch List Add Scrips Option Calculator						
▲ Watch List X						
Select Watchlist sunil ▼						
Seg	Security				LTP	%Chg
NSE	ABB-EQ	B	S		802.80	0.55
NSE	IOB-EQ	B	S		86.60	2.24
NSE	KOVAL-BE	B	S		95.00	4.40
NSE	HDFC-EQ	B	S		674.70	-0.13
Remove Scrip		B	S		441.80	0.88
Place Buy Order		B	S		10.10	0.50
Place Sell Order		B	S		31.15	8.54
Get Quote		B	S		486.00	-0.14
MBP		B	S		25.30	1.20
Intra-day Chart		B	S		16.40	3.47
		B	S		12.70	3.67

## Quote:

Get Quote			
Details	Value	Details	Value
SymbolName	HDFC-EQ	Volume	1608018
Buy@ (Rs)	674.75	Sell@ (Rs)	674.80
LTPPrice (Rs)	674.80	Previous close (Rs)	675.60
Change (Rs)	-00.80	% Change	-00.11
High	676.00	Low	670.20

Close

## MBP:

MBP			
Details	Value	Details	Value
LastTradedPrice	674.90	LastTradedQty	8
% Change	-00.10	Abs. Change(Rs)	-00.70
SymbolName	HDFC-EQ	WeightedAvg	674.39
OpenRate	670	Prev.CloseRate	675.60
HighRate	676.00	LowRate	670.20
Volume	1610290	Value(Lacs)	NA
TotalBuyQty	334890	TotalSellQty	221512
Lower Circuit Limit	00.00	Higher Circuit Limit	00.00

Close

Scrolling down in MBP provides BEST 5 BUY and SELL:

MBP							
Open Interest		0					
BEST 5 BUY				BEST 5 SELL			
SL	Qty	Price (Rs)	Orders	SL	Qty	Price (Rs)	Orders
1	1	674.80	1	1	68	674.90	4
2	50	674.75	1	2	2	674.95	2
3	79	674.70	2	3	80	675.00	2
4	216	674.60	1	4	10	675.05	1
5	100	674.55	1	5	100	675.15	1

Close

Intra – Day Chart:



Close


## PLACING ORDERS:

Placing orders can be done by selecting the “B / S” against the security. “B” for Buy and “S” for Sell. Once the order is placed, you can modify the order or cancel the same. The status of each order appears in the window.

For derivative contracts the minimum quantity is displayed by default, you may place orders only in multiples of the same.

### Placing a buy order:

Settings Set Watch List Add Scrips Option Calculator					
Watch List					
Select Watchlist sunil					
Seg	Security			LTP	%Chg
NSE	ABB-EQ	B	S	800.00	0.20
NSE	IOB-EQ	B	S	86.50	2.13
NSE	KOVAL-BE	B	S	95.00	4.40
NSE	HDFC-EQ	B	S	677.40	0.27
NSE	HINDUNILVR-EQ	B	S	440.60	0.61
NSE	TRIDENT-EQ	B	S	10.30	2.49
NSE	ANSALAPI-EQ	B	S	31.00	8.01
NSE	AANJANEYA-EQ	B	S	481.30	-1.11
NSE	ZODJRDWKJ-EQ	B	S	25.00	0.00
NSE	LITL-EQ	B	S	16.45	3.79
NSE	3IINFOTECH-EQ	B	S	12.80	4.49


**Place Buy Order**

ExchangeSeg	NSE
TradingSymbol	HDFC-EQ
Series/Settle	EQ
ProductCode	CNC
Buy/Sell	Buy
PriceType	LIMIT
Qty (1)	1
DiscQty	
Price	
Trigger Price	

Submit



### Selecting a price type:

PriceType	LIMIT
Qty (1)	LIMIT
DiscQty	MARKET
	SL-L
	SL-M

### In price type 4 options are available:

- a. Limit: To place a limit order. You need to enter the price up to 22 decimal places.
- b. Market: To place an order at the prevailing market rate. You will not be asked to enter the price.
- c. SL-L : Stop Loss – Limit. To place an order where you can enter the price and place a trigger price lower than the actual price to prevent the order from executing at loss.
- SL – M : Stop Loss -Market . To place an order at the market. Here only the trigger price lower than the prevailing rate can be specified.

## Placing a Sell order:

Settings
Set Watch List
Add Scrips
Option Calculator

▲ Watch List

Select Watchlist
sunil

Seg	Security			LTP	%Chg
NSE	ABB-EQ	B	S	800.00	0.20
NSE	IOB-EQ	B	S	86.50	2.13
NSE	KOVAL-BE	B	S	95.00	4.40
NSE	HDFC-EQ	B	S	677.40	0.27
NSE	HINDUNILVR-EQ	B	S	440.60	0.61
NSE	TRIDENT-EQ	B	S	10.30	2.49
NSE	ANSALAPI-EQ	B	S	31.00	8.01
NSE	AANJANEYA-EQ	B	S	481.30	-1.11
NSE	ZODJRDWKJ-EQ	B	S	25.00	0.00
NSE	LITL-EQ	B	S	16.45	3.79
NSE	3IINFOTECH-EQ	B	S	12.80	4.49

Place Sell Order

ExchangeSeg	NSE
TradingSymbol	HDFC-EQ
Series/Settle	EQ
ProductCode	CNC
Buy/Sell	Sell
PriceType	LIMIT
Qty (1)	1
DiscQty	
Price	
Trigger Price	

Submit

## Selecting a price type:

PriceType	LIMIT
Qty (1)	LIMIT
DiscQty	MARKET
	SL-L
	SL-M

In price type 4 options are available:

- a. Limit: To place a limit order. You need to enter the price upto 22 decimal places.
- b. Market: To place an order at the prevailing market rate. You will not be asked to enter the price.
- c. SL-L : Stop Loss – Limit. To place an order where you can enter the price and place a trigger price higher than the actual price to prevent the order from executing at loss.
- d. SL – M : Stop Loss -Market . To place an order at the market.. Here only the trigger price higher than the prevailing rate can be specified.

## ORDER BOOK:

The Open Order book displays the status of every order placed in the account. Open orders are available for modification or cancellation. Scroll horizontally to access the modification/cancellation field in the page. You can modify limit orders to market orders.

Rejected orders reasons are available in the last column. Please use the cancel/modify option carefully, as once clicked the same cannot be reversed, and confirmation is not sought before proceeding. To sort the view click on the headers in the respective column

=> ex. Order No. or Order date.

The Open Order book can be invoked from the below displayed screen shot. Click on + icon.



▲ Order Book							
Seg	Price Type	Order No.	Order Date	Security	Status	Price	Trigger
NSE	MARKET	120705000000147	ABB-EQ	05/07/2012 09:54:22	complete	00.00	00.00
NFO	MARKET	120705000000155	MINIFTY12JULFUT	05/07/2012 09:55:42	complete	00.00	00.00
NFO	MARKET	120705000000140	MINIFTY12JULFUT	05/07/2012 09:53:20	rejected	00.00	00.00

Close

To Modify or cancel the Open orders scroll horizontally and click on M or C accordingly.

Price	Trigger	Buy Qty	Total Qty	Buy/Sell			Reasons
00.00	00.00	0	1	BUY	M	C	--
00.00	00.00	0	20	BUY	M	C	--
00.00	00.00	0	20	BUY	M	C	16000 : The trading

Close

## POSITION BOOK:

The position book displays the positions held by the account holder.. The Position book reflects the holdings of each security Bought/Sold; it computes the Average Price and displays the Mark to Market for each position.

The red and blue banding indicates MTM profit (blue) or loss (red), which allows users to know their net positions upfront.

The BEP indicates the “Break-even price/point” at which the security should be bought / sold to earn a profit.. Net Value column displays the total holding.

A positive position indicates – cash inflow and the negative position indicates – cash outflow.

**▲ Position Book**

Position Type: Intra-Day (dropdown menu with options: Intra-Day, Carry Forward)


Refresh button

Security	Qty	Net Value	Sell Avg. Price	Buy Avg. Price	LTP
ABB-EQ	NSE	1	-803.00	00.00	803.00
MINIFTY12JULFUT	NFO	20	-106340.00	00.00	5317.00
<b>Total Value</b>		107143.00	<b>Total M</b>		

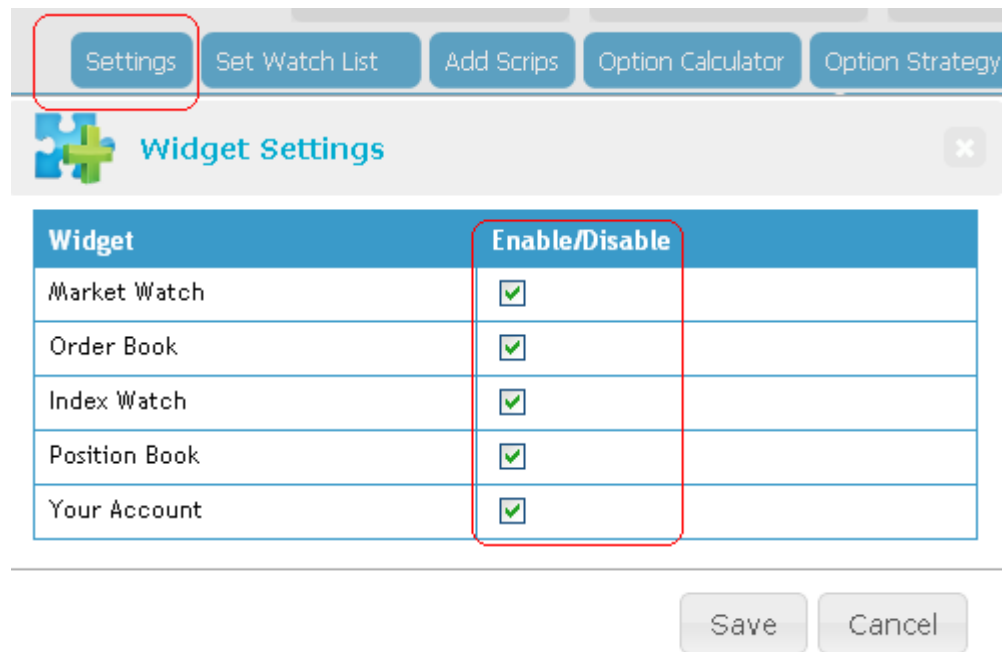
## ACCOUNT SUMMARY:

The Account Summary updates when your position book value changes. On execution of an order in the Cash market the amount is displayed as "Holding Value".

For positions in derivatives like F&O or currency the same is shown as Margin value. Profit/Loss arising from squaring-up a position is reflected under "Gain/Loss". If by squaring off the position the net MTM, results in a loss the amount shall be deducted from the "Available Funds", if the same results in Profit the additional funds shall be added to the "Available Funds". The available funds is the clear amount available for placing orders.

▲ Your Account 	
Details	Value
Initial Corpus	500000.00
Gain/Loss (Realized Profit/Loss)	-60857.80
Holding Value	2679.23
F & O Margin	12877.00
Currency Margin	00.00
Available Cash	423585.97

## **ENABLING/ DISABLING WIDGETS:**



Widget	Enable/Disable
Market Watch	<input checked="" type="checkbox"/>
Order Book	<input checked="" type="checkbox"/>
Index Watch	<input checked="" type="checkbox"/>
Position Book	<input checked="" type="checkbox"/>
Your Account	<input checked="" type="checkbox"/>

Save Cancel

Visit <https://plus.omnesysindia.com/NestPlus/> to know other products of Nest Plus.