

Pathway® X1 Portable Automatic Satellite TV Antenna

Winegard is excited to announce the launch of the new Pathway X1 Portable Automatic Antenna that works exclusively with DISH SD/HD programming.

Smallest Portable - This sleek, compact portable not only looks good, it requires minimal space making it super easy to take with you wherever you go!

Effortless Setup - Powered through receiver, only requiring coax cable.

Simple to Use - 100% automatic and runs through customized receiver interface for fastest acquisition time.

Ideal with Pay-As-You-Go programming - Activation available through Winegard.

Roof Mount Conversion Kit - The only portable with the ability to convert to a permanent roof mount without having to pay the price of a roof mount antenna.



Features and Benefits

The **Winegard Pathway X1** works exclusively with DISH HD Solo receiver technology and programming. Powered through the receiver, the Pathway X1 only requires a single coax connection. Not only is the Pathway X1 the smallest portable ever made, it is also the fastest! And for customers that later decide they want a roof mount antenna, the Pathway X1 is the only portable to offer a roof mount kit option (sold separately).

Please note: While all non-local programming is accessible with a Pathway X1, only locals that are broadcast from a western arc satellite will be available. Optimized for single receiver use, the Pathway X1 can support two receivers. Two receiver support will require some user interaction to run a check switch when the primary receiver is changed to the alternate satellite. (See the 'versatile' section below.)

As a workaround, customers may purchase an over-the-air antenna and feed the antenna's coaxial cable directly into the back of the ViP 211k receiver. The ViP 211z receiver requires the USB Digital OTA Tuner available from DISH for \$30 on mydish.com in order to connect an over-the-air antenna. RVers also have the choices of calling DISH to change their service address based on where they are located to receive satellite locals or subscribing to Distant Network service channels from New York and San Francisco through AllAmericanDirect.com (company separately bills customers for this service).

Smallest Portable Antenna

- Dimensions: 14.3" diameter, 13.5" height
- Weight: 10 pounds
- Powered via coaxial cable from the primary receiver (120 volts AC)
- Integrated security handle



Over 40% smaller than the Carryout

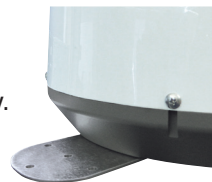
Fastest Setup

- **Fully-automatic** (customer just picks the state location)
 - Automatically finds DISH satellite orbital locations
 - Self-installs faster than other automatic antennas
 - Runs through customized receiver interface for fastest acquisition times

Pathway® X1 Portable Automatic Satellite TV Antenna

Versatile

- **1 TV** (one receiver)
 - Points to either 110°, 119° or 129° (Western Arc)
 - Channel changes will prompt antenna to point to required orbital
- **2 TVs** (a receiver on each TV)
 - Points to either 110°, 119° or 129° (Western Arc)
 - User interaction is required to run a check switch on the second receiver when the primary receiver changes to an alternate satellite (for seamless viewing with 2 receivers on 2 TVs see Pathway X2 antenna)
- **Ground or Roof Mount**
 - With the unique ability to later convert the portable X1 to a permanent roof mounted antenna, the X1 saves the consumer money from having to buy a new antenna and creates revenue for the dealer with the installation. Plus, dealers have less models to inventory while still offering customers antenna options. Roof Mount Kit sold separately. *Additional wiring is required unless vehicle is prewired for a Winegard satellite TV antenna.*



Exclusive

- **Only works with DISH**
 - Only DISH offers HD for portable antennas
 - Only DISH offers **money-saving, pay-as-you-go TV!** DISH pay-as-you-go TV may be turned on or off on a monthly basis as needed.
- **Winegard Pathway has a 2 year warranty**
 - Unlike other portable antennas that have only a one year parts warranty, Pathway X1 has a two year parts, one year labor warranty.

Pack-out Contents

- 25-foot RG-6 **coaxial cable**
- **User Manual**, including warranty information (Winegard's website has **videos and online tutorials** for the Pathway X1)



DISH Programming

- The Pathway X1 is **compatible only with DISH Solo HD receivers** -- ViP® 211, 211k, 211z and 411 (new and remanufactured 211z and remanufactured 211k inventory will be compatible with the Pathway X1 out of the box)
- **Winegard provides receivers and activation** for DISH Pay-as-you-go programming
- Winegard DISH **receiver hotline 1-866-609-9374** available Monday-Friday 7:30am – 5:30pm CST



No Contract
Required



No Fees to
Stop or Start



Pay a Month
at a Time

DISH PAY-AS-YOU-GO PROGRAMMING

1-866-609-9374

Pathway® X1 Portable Automatic Satellite TV Antenna

SIMPLE SETUP



*User interaction required when primary receiver is changed to an alternate satellite.

TEMPORARY MOUNT OPTIONS

WINDOW MOUNT MT-SM30

⚠ For Stationary Use Only (while vehicle is parked)

Provides ability to quickly raise, position and secure satellite TV antenna off the ground for unobstructed reception. After assembling the mount, simply clip the mount with antenna attached onto the truck window. Dual bumper leveling provides multi-point stability. Exterior mount brackets provide additional mounting locations for optimal high look angle placement and further reduce the chance for theft or damage.



TRIPOD MOUNT TR-1518

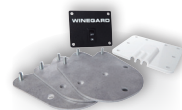
Aluminum tripod elevates the portable antenna off the ground for protection from mud and water.



PERMANENT MOUNT OPTIONS

ROOF KIT MOUNT RK-2000

Converts a portable satellite antenna into a permanent roof mount antenna without having to pay the price of a roof mount antenna. Simply remove the portable feet and antenna dome, line up roof feet and fasten into place, replace antenna dome, and mount on roof.



REAR CAB MOUNT MT-SM10

Rear cab mount provides a secure and hassle free mounting option for over-the-road truckers. Higher look angle allows Winegard satellite antenna a better unobstructed view of satellites. After a one time installation, the rear cab mount allows truckers to enjoy hassle free satellite TV with a one button on/off switch from inside the cab.



Pathway® X1 Portable Automatic Satellite TV Antenna

FAQS

Q. What satellite providers and satellites work with the Pathway X1 antenna?

A. The Pathway X1 antenna is exclusively compatible with DISH programming. The antenna can receive programming from DISH western arc, which includes satellites 110°, 119°, and 129°.

Q. Does the Pathway X1 antenna automatically toggle between satellites?

A. Yes. As you change the channel, the Pathway X1 antenna will automatically toggle to the corresponding satellite with no manual adjustments.

Q. Can I get HD service with the Pathway X1 antenna?

A. HD programming is available. Keep in mind that in order to receive HD programming, you must have an HDTV as well as an activated HD receiver with an HD programming package (sold separately).

Q. I have cable at home and don't want to switch or pay for satellite programming all year. What are my options?

A. DISH offers pay-as-you-go programming. There are no contracts and no commitments—simply pay for the months you would like satellite television service. Call 1-866-609-9374 to sign-up or visit www.winegard.com/dishnetwork for more info.

Q. Where can I get a receiver and programming?

A. For receivers and programming, call 1-866-609-9374 or visit www.winegard.com/receivers.

Q. How many receivers can I hook up to the Pathway X1 antenna?

A. The Pathway X1 antenna has two satellite outputs. Two single-tuner receivers can be hooked up to the antenna.

Q. If I hook up two TVs to the antenna, can I watch any program on either TV?

A. You can watch any program on either TV as long as the programs are on the same satellite.

Q. What receivers are compatible with the Pathway X1 antenna?

A. The Pathway X1 antenna must be used with a DISH Solo HD receiver. Examples of Solo HD receivers include DISH 211k, 211, 411, and 211z receivers.

Q. Do I need to go through all receiver setup steps every time I use the antenna?

A. Every time the antenna is moved to a new location, you will need to complete receiver setup. Simply choose the state that you are currently in. Then, select "Scan" to begin scanning for satellites.

Q. What do I need to set up the Pathway X1 antenna?

A. You will need a TV and an activated receiver with programming package. The antenna must be used with a DISH Solo HD receiver; examples include DISH 211k, 211, 411, and 211z receivers.

Q. Can the Pathway X1 antenna be mounted to the roof?

A. Yes, the Pathway X1 antenna can be permanently mounted to the roof with the RK-2000 Roof Mount Kit (sold separately). Simple to install; roof mount kit includes everything you need to make the Pathway X1 antenna a roof mount antenna. Remove portable feet and antenna dome; line up roof feet and fasten into place; replace dome on antenna and mount to roof. Additional wiring is required unless vehicle is prewired for a Winegard satellite TV antenna. Full installation instructions come with kit.

Q. Is the Pathway X1 antenna compatible with the TR-1518 tripod mount?

A. Yes, the Pathway X1 antenna is compatible with the TR-1518 tripod mount.

Q. Is the Pathway X1 antenna compatible with the Carryout ladder mount?

A. No—the antenna is not compatible with the Carryout ladder mount. Installing the antenna on the Carryout ladder mount on a moving vehicle may lead to serious injury and/or equipment and property damage.

For more information, videos and promotional materials visit
dealers.winegard.com

The foregoing (including without limitation, brief description(s) of certain terms and conditions applicable to each of the Promotional Programs named in this RetailerNews) may be subject to applicable Business Rules and/or different terms and conditions of your Retailer Agreement with DISH Network L.L.C., formerly known as EchoStar Satellite L.L.C. ("DISH"). In the event of any conflict or inconsistency between the terms and conditions set forth in any applicable Business Rules or your Retailer Agreement and the terms and conditions set forth above, the terms and conditions of such Business Rules and/or such Retailer Agreement shall control. Programming packages and pricing are subject to change at Any Time in DISH's Sole Discretion. With respect to hardware purchased by a Retailer from Echosphere L.L.C. ("Echosphere"), all equipment discounts and other Incentives shall be paid by DISH subject to and in accordance with the terms and conditions of each participating Retailer's Retailer Agreement and applicable Business Rules. With respect to hardware purchased by a Retailer from an Authorized Distributor, any and all equipment discounts and other Incentives shall be paid by the Authorized Distributor in accordance with and subject to the terms and conditions of your applicable agreement(s) with such Authorized Distributor. Notwithstanding anything set forth in this RetailerNews to the contrary, any and all references herein to equipment discounts and/or other Incentives shall apply solely and exclusively to Retailers who purchase their hardware from Echosphere. All capitalized terms not otherwise defined in this RetailerNews shall have the meanings ascribed to them in your Retailer Agreement.