

PROFESSIONAL DSP COLOR DOME CAMERA**OPERATION MANUAL**

Thank you for choosing our high quality camera.
Before attempting to connect operate this unit,
please read and follow these instructions.

KEY FEATURES

These CCD video cameras employ a 1/3" Sony Exview HAD CCD II solid-state imaging device which provide superior performance. These cameras can be installed easily in most indoor locations with a very low current consumption of 110mA or less. These cameras are not only easy to install but achieve an excellent reliability record.

ACCESSORIES FURNISHED

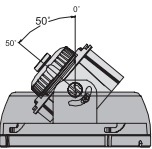
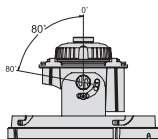
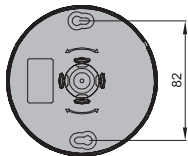
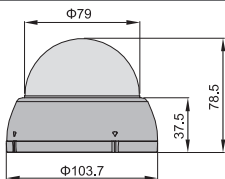
Accessories	Screw	Manual	Mount Guide
Q'ty	2	1	1
Option	-	-	-

SPECIFICATIONS

Signal Format	NTSC	PAL
Image Device	SONY 1/3" Exview HAD CCD II	
Scanning Frequency	H:15.734KHz, V:59.94Hz	H:15.625KHz, V:50Hz
Total Pixels	1020(H) x 508(V)	1020(H) x 596(V)
Effective Pixels	976(H) x 494(V)	976(H) x 582(V)
H.Resolution	750TV Lines	
Electronic Shutter	1/60 ~ 1/100,000sec	1/50 ~ 1/100,000sec
S/N Ratio	More than 50dB(AGC Off)	
Gamma	r =0.45	
Sync System	Internal	
Scanning System	2 : 1 Interlace	
Video Output	1.0 Vp-p Composite 75(Ω)	
Board Lens	2.45mm, 2.97mm, 3.6mm, 4.3mm, 6mm, 8mm, 12mm	
Operating Temperature	14°F~122°F(-10°C~+50°C)	
Storage Temperature	-4°F~140°F(-20°C~+60°C)	
Min.Illumination	0.05 Lux / F2.0	
Operating Humidity	Less than 80%	
Power Consumption	DC 12V (±10%) Max 110mA	

Specifications and designs are subject to change for improving the functionality of this product without notice.

DIMENSIONS

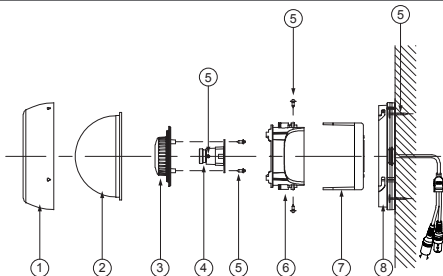


◀ When using a wide angle lens of 2.45mm, Tilt is not available over 50°.

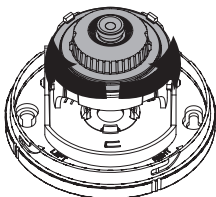
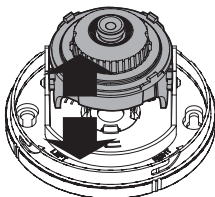
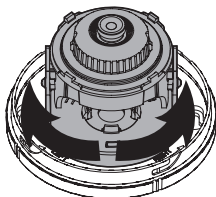
Unit : mm

INSTALLATION / OVERVIEW

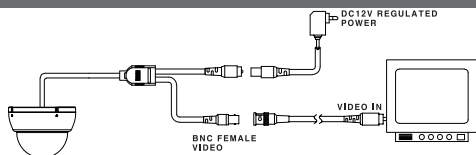
- ① CASE HOUSING TOP
- ② CASE HOUSING COVER
- ③ HOLDER ROTATION
- ④ LENS
- ⑤ SCREW
- ⑥ HOLDER TILTING
- ⑦ HOLDER PANNING
- ⑧ CASE HOUSING BOTTOM



3-AXIS Gimbal Bracket



CONNECTION



DC12V BNC CONNECTION

! When you install the camera, please glue up the end of cable to keep it stable in order to protect the camera from the humidity problems.

This device complies with Part 15 of the FCC Rules. Operation is subject to the following two conditions;

1. This device may not cause harmful interference.
2. This device must accept any interference received, including interference that may cause undesired operation.

Note

This equipment has been tested and found to comply with the limits for a Class A digital device, pursuant to part 15 of the FCC Rules. These limits are designed to provide reasonable protection against harmful interference when the equipment is operated in a commercial environment. This equipment generates, uses, and can radiate radio frequency energy and, if not installed and used in accordance with the instruction manual, may cause harmful interference to radio communications. Operation of this equipment in a residential area is likely to cause harmful interference in which case the user will be required to correct the interference at his own expense."

WARNING

This is a class A product. In a domestic environment this product may cause radio interference in which case the user may be required to take adequate measures.

Caution

Any changes or modifications in construction of this device which are not expressly approved by the party responsible for compliance could void the user's authority to operate the equipment.

CAUTION

1. A regulated DC12V 300mA power supply is recommended for use with this camera for the best picture and the most stable operation.
An unregulated power supply can cause damage to the camera. When unregulated power supply is applied, product warranty will be out of subject.
2. It is recommended that the camera is used with a monitor that has a CCTV quality 75 video impedance level.
If your monitor is switched to high impedance then please adjust accordingly.
3. Do not attempt to disassemble the camera to gain access to the internal components. Refer servicing to your dealer.
4. Never face the camera towards the sun or any bright or reflective light, which may cause smear on the picture and possible damage to the CCD.
5. **Do not remove the serial sticker for the warranty service.**