

# iHome™

IHA610KB  
wireless numeric keypad &  
laser mouse



## user manual

Congratulations on the purchase of your new **wireless numeric keypad & laser mouse**. This product comes with a limited lifetime warranty.

Before using your product, please thoroughly read and follow the instructions inside this manual.

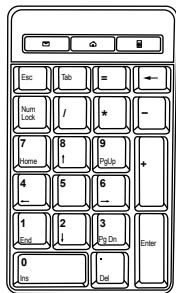
If you still need help, see the back page for other support options.

If you want to know more about our products, visit us online at [www.life-works.com](http://www.life-works.com).

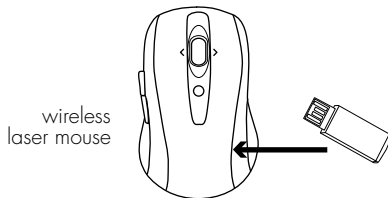
### **system requirements**

- Windows® XP or Windows Vista®
- USB port
- CD-ROM drive

# your package should contain



wireless numeric keypad



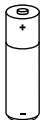
wireless laser mouse

mini USB receiver

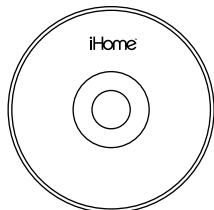
(note: The mini USB receiver can be stored inside the mouse. Push the button on the bottom of the mouse to eject the receiver.)



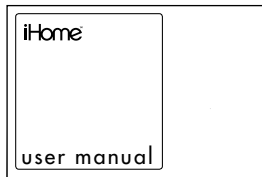
1 AAA DURACELL® battery for keypad



1 AA DURACELL® battery for mouse



installation CD



user manual  
(in your hands right now)

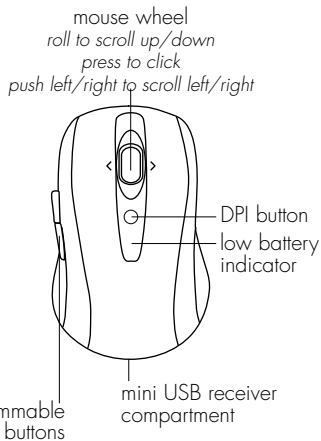
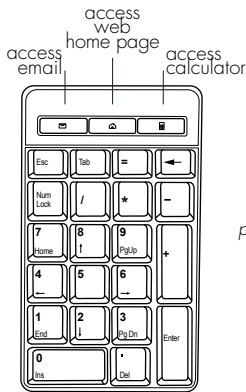
## user manual contents

- features • 2
- your new keypad and mouse • 3
- connect hardware • 3
- install software • 4
  - to customize the mouse buttons • 5
  - to customize the mouse scroll wheel • 5
- product operating tips • 6
- troubleshooting • 6

## features

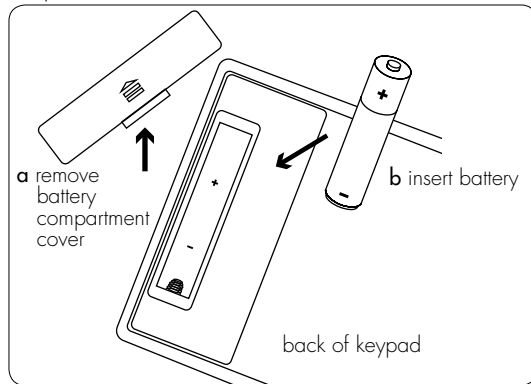
- plug-n-play—no syncing needed
- email, calculator and internet launch buttons
- 5-button laser mouse
- horizontal and vertical scrolling
- programmable mouse buttons
- cursor speed button—change mouse sensitivity on the fly

# your new keypad and mouse

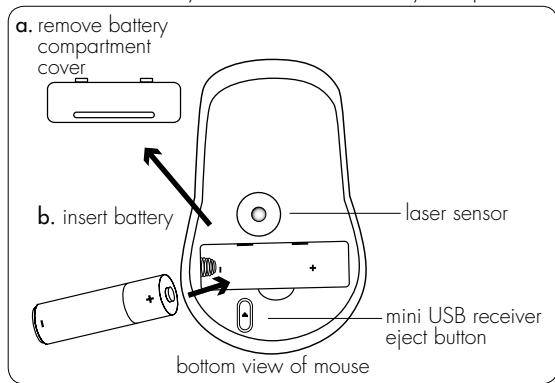


# connect hardware

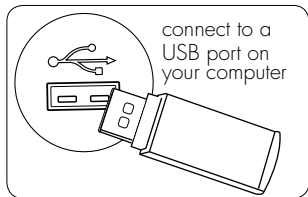
1. Insert 1 AAA battery into the keypad battery compartment.



2. Insert 1 AA battery into the mouse battery compartment.



3. Connect the mini USB receiver to an available USB port on your computer. The keypad and mouse automatically connect to the mini USB receiver.



The drivers for your keypad and mouse load automatically.

4. Start using your keypad and mouse.

To set up the advanced functions of your mouse, install the supplied software.

- **note** To use the horizontal (side-to-side) mouse scroll function on a Windows XP computer you must install the supplied software. Windows Vista users do not have to install the software to use the horizontal scroll function.

## install software

1. Insert the installation CD into your computer.
2. On the screen that appears, click **install**.



3. An InstallShield Wizard dialog box displays. Click **Next**.
4. The **Choose Destination Location** dialog box displays. Click **Next** to accept the default installation location.

- Once installation is complete, restart the computer when prompted.

When the computer restarts, a mouse icon displays in the system tray.



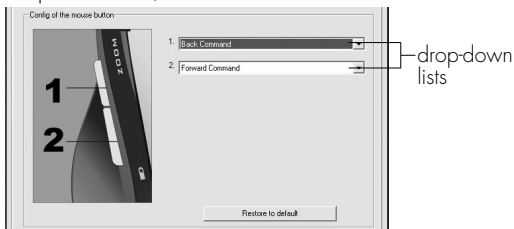
- **note** With the software installed, you can customize the programmable mouse buttons on the side of your mouse or change settings for the scroll wheel.

## to customize the mouse buttons

- Double-click the **mouse icon** in the system tray. This opens a dialog box.



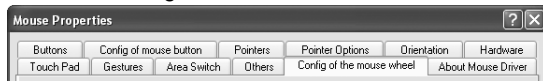
- Select the **Config of mouse button** tab.
- In the drop-down lists, select an action for each button.



- Click **OK** to accept the changes and exit.

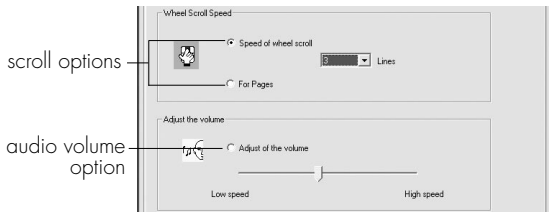
## to customize the mouse scroll wheel

- Double-click the **mouse icon** in the system tray.
- Select the **Config of the mouse wheel** tab.



- Select **Speed of wheel scroll** and choose how many lines should scroll when the wheel is rotated one click, or select **For Pages** to scroll a whole page with each click.

To set the mouse wheel to adjust the audio volume instead, select **Adjust of the volume**, and adjust the slider to determine how fast the volume changes when you turn the wheel.



- Click **OK** to accept the changes and exit.

## product operating tips

- Your keypad and mouse will operate from as far away as 30 ft. (10 m) from your computer.
- Customize the buttons on your mouse for greater functionality.
- Your mouse has two sensitivity settings: standard mode and high-performance mode. High-performance mode allows the cursor to move very quickly and is useful for activities such as gaming. Press the DPI button behind the scroll wheel to switch from standard mode to high-performance mode and back.
- The scroll wheel is also a button. Press the scroll wheel (without rolling it) to automatically scroll a document or web page, then move your mouse up/down (vertical scrolling) or left/right (horizontal scrolling) to set the automatic scroll speed.
- When num lock is on, the number keys on your keypad produce numbers on your computer. When num lock is off, the navigation functions (shown on the bottoms of the keys) are active on the keypad. Press the num lock key to turn num lock on and off.

## troubleshooting

situation	try this
low battery indicator is blinking red	<ul style="list-style-type: none"><li>• Replace the battery.</li></ul>
keypad or mouse does not work at setup	<ul style="list-style-type: none"><li>• Ensure the mini USB receiver is connected.</li><li>• Move the mouse or keypad closer to the mini USB receiver.</li><li>• Check that batteries are inserted correctly into the battery compartment for the keypad or mouse.</li><li>• Disconnect the mini USB receiver, then reconnect it.</li><li>• Connect the mini USB receiver to a different USB port. Try a USB port on the computer, not a USB hub.</li></ul>
keypad or mouse has stopped working	<ul style="list-style-type: none"><li>• Check that the batteries are good. If necessary, replace the batteries.</li><li>• Ensure the laser sensor on the mouse is clean.</li></ul>
cannot type numbers	<ul style="list-style-type: none"><li>• Press the num lock key to turn num lock on.</li></ul>

## FCC Statement

This device complies with part 15 of FCC Rules. Operation is subject to the following two conditions: (1) this device may not cause harmful interference, and (2) this device must accept any interference received, including interference that may cause undesired operation. This equipment has been tested and found to comply with the limits for a Class B digital device, pursuant to part 15 of FCC Rules. These limits are designed to provide reasonable protection against harmful interference when the equipment is operated in a residential installation. This equipment generates, uses, and can radiate radio frequency energy and, if not installed and used in accordance with the instruction guide, may cause harmful interference to radio communications. However, there is no guarantee that interference will not occur in a particular installation. If this equipment does cause harmful interference to radio or television reception, which can be determined by turning the equipment off and on, the user is encouraged to try to correct the interference by one or more of the following measures:

- Reorient or relocate the receiving antenna.
- Increase the separation between the equipment and the receiver.
- Connect the equipment into an outlet on a circuit different from that to which the receiver is connected.

Consult a service representative for help.

Properly shielded and grounded cables and connectors must be used in order to comply with FCC emission limits. LifeWorks is not responsible for any radio or television interference caused by using other than recommended cables and connectors or by unauthorized changes or modifications to this equipment. Unauthorized changes or modifications could void the user's authority to operate the equipment.

Responsible party:

LifeWorks Technology Group LLC  
1412 Broadway  
New York, NY 10018

 Tested To Comply With FCC Standards  
FOR HOME OR OFFICE USE

### Warning

Improper setup, use and care of this product can increase the risk of serious injury, death or device damage. Read and keep this guide and all other printed guides for future reference. For updated guides or replacements, go to [www.life-works.com](http://www.life-works.com)

### Do Not Attempt Repairs

Do not attempt to take apart, open, repair, service or modify the device(s). Doing so may risk electric shock or other hazard. Evidence of any attempt to open or modify the device, including any peeling, puncture or removal of labels, will void the Limited Lifetime Warranty.

### Class 1 Laser Products

iHome Class 1 Laser products comply with International Standards EN 60825-1: 1994+A1+A2: 2001 and FDA standards title 21 CFR Subchapter J. Observe the following precautions; using the product in a manner other than specified here may cause hazardous radiation exposure.

- Do not stare at the Laser or shine the Laser into your eyes or those of another person.
- Do not allow young children to use the product without adult supervision.
- Do not try to replace or repair the Laser; these components are not user-replaceable.
- Do not shine the Laser on a reflective surface.
- Do not scratch the lens.



### Keyboard and Mouse Devices: Health Warning

Use of a keyboard or mouse may be linked to serious injuries or disorders. As in many activities, when using a computer you may experience occasional discomfort in various parts of your body. However, do not ignore symptoms such as persistent or recurring discomfort, pain,

throbbing, aching, tingling, numbness, burning sensation or stiffness. Promptly see a qualified doctor, even if symptoms occur when you are not working at your computer.

There is general consensus among researchers that there may be many factors linked to the occurrence of these symptoms, including overall health, stress, physical condition and how a person positions and uses his or her body during work and other activities (including the use of a keyboard or mouse). The amount of time a person spends performing an activity may also be a factor.

If you have questions about how your own lifestyle, activities or physical condition may be related to these symptoms, see a qualified health professional.

### Battery-Powered Devices

Use of rechargeable or disposable batteries in an improper manner may result in battery fluid leakage, overheating or explosion. Battery fluid is corrosive, may be toxic, can cause skin and eye burns, and is harmful if swallowed.

- Keep batteries out of reach of children.
- Do not heat, open, puncture, mutilate or dispose of batteries in fire.
- Do not mix new and old batteries or batteries of different types (for example, carbon-zinc and alkaline batteries).
- Remove the batteries if they are worn out or before storing your device for an extended period of time.
- Always remove old, weak or worn-out batteries promptly and recycle or dispose of them in accordance with local and national disposal regulations.
- If a battery leaks, remove all batteries, taking care to keep the leaked fluid from touching your skin or clothes. If fluid from the battery comes into contact with your skin or clothes, flush with water immediately. Before inserting new batteries, thoroughly clean the battery compartment with a damp paper towel, or follow the battery manufacturer's recommendations for cleanup.
- **Caution** Risk of explosion if battery is replaced with an incorrect type. Use and replace with the correct size and type (alkaline, zinc-carbon, or zinc-chloride) of battery only.

## Wireless Devices

Remove the batteries from any wireless device, or turn it off, before boarding an aircraft or packing the device in luggage that will be checked. Wireless devices can transmit radio frequency (RF) energy whenever batteries are installed and the device is turned on.

## Radio Frequency Technical Specifications:

### 2.4 GHz Devices

Non-specific short range device. RF output power meets all SRD requirements.

Printed in China

© 2008 LifeWorks Technology Group LLC.

iHome™ is a trademark of SDI Technologies Inc. used under license.

Windows Vista® is a registered trademark or trademark of Microsoft Corporation in the United States and/or other countries.

All other brands and logos are trademarks of their respective companies.

## **technical support**

for technical support please visit

**[www.life-works.com](http://www.life-works.com)**

or call (877) LIFE-540

(877-543-3540)

## **lifetime warranty**

for warranty information, please visit

**[www.life-works.com/warranty](http://www.life-works.com/warranty)**

for model number

IH-A610KB

document version number 0811-0