

## New Product Summary

Launch Date – 1<sup>st</sup> July 2008  
 Under NDA Until – 1st June 2008

# Epson EB 1730W and 1735W

### Lightweight, high brightness, micro-portable projector

The Epson EB-1700 Series has the power to deliver bright, high-contrast images in clear colours. The projectors are also lightweight and compact, ideal for the busy professional on the move, on customer calls or attending many different meetings in the office.

This projector is also very easy to set up and operate, leaving you free to concentrate on your audience and your presentation. Quiet and compact, it would go unnoticed if it wasn't so good to look at.

#### Perfectly projected images wherever you are

When you are on the move can you be sure the conditions will be right for your presentation?

With the Epson EB-1730W and EB-1735W, clear and natural images are guaranteed in the lightest room, thanks to the innovative Epson E-TORL lamp technology which provides bright images rated at 3000 ANSI lumens.

#### Widescreen WXGA Resolution

The wide screen (1280x800) WXGA resolution is the same as most laptop PC's so the EB-1730W and EB-1735W are ready to project exactly what is on your screen without the need to adjust any settings. WXGA offers 30% more space compared with XGA (1024x768) resolution.



#### A truly mobile solution

Weighing as little as 1.7kg and supplied with a compact, stylish carrying case this 3LCD projector is the perfect travel companion.

When you are on the move, peace of mind is ensured because ease-of-use and Epson's high reliability are designed into the EB-1730W and EB-1735W, backed up by the standard 3 year next day on site warranty.

#### Ready in seconds – simply plug and project

All that is needed to set up your projector is to plug it in, connect your source and within seconds you are ready to present. The projected image is instantly aligned thanks to automatic vertical keystone correction, and the projection level can be easily adjusted using the single foot release lever. When you have finished your presentation, simply switch off and pack away. With the instant off button there's no waiting around for the projector to cool down.

#### EB-1730W Key features

- **High brightness and lightweight** - 3000 ANSI Lumens and only 1.7kg
- **Future proof WXGA resolution**
- **No time wasting** - with quick startup, automatic vertical keystone correction and quick cool down
- **60" image from only 1.26 metres** - clear presentations in almost any room
- **AV mute slide** - for more effective presentations
- **Peace of mind warranty** - 3 year next day on site repair or replace in the UK, 3 year next day on site repair or loan in the Republic of Ireland.

#### EB-1735W Additional Key features

- **High brightness and lightweight** - 3000 ANSI Lumens and only 1.8kg
- Present directly and securely through a wireless network
- Operate 4 projectors simultaneously, to create a panorama or show different applications.
- Monitor and control projectors remotely using Epson's EMP Monitor software
- Certified for Windows Vista™ Network Projector function
- Go light, leave your PC behind. Simply plug in your USB key and start your presentations, slide shows or movies.
- Easy connection with Epson's exclusive 3 in 1 USB display *\*excluding "Home Basic Edition"*



### Lightweight and compact – includes carry case

The stylish carry case provides protection for your projector and allows accessories to be held securely which are accessible in seconds.



### PC Free

- Go light, leave your PC behind. Simply plug in your USB key and start your presentations, slide shows or movies.

### Exclusive 3 in 1 USB Display

- A single, long USB cable replaces three to carry all signals — image, sound and mouse control data (for mouse cursor and Page Up/Down). This unique and extremely convenient feature means no more having to play with wires in front of your audience. And combined with the remote control you can also project and slideshow your presentation easily at a distance.



### Screen size and projection distance

Use the Epson Projection Distance Calculator software available from [www.epson.co.uk](http://www.epson.co.uk) for distances and screen sizes not shown below.

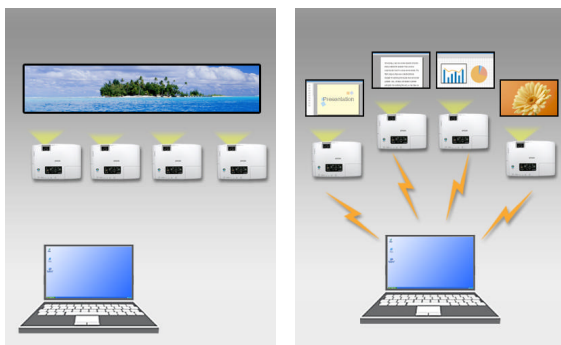
#### 4:3 Aspect Ratio

Screen [inch]	Projection distance						Offset A		Offset B	
	Wide			Tele			Wide = Tele			
	cm	inch	foot	cm	inch	foot	V1 cm	V1 inch	V2 cm	V2 inch
30	85	26	2.1	80	32	2.6	-7	-2.6	39	15.4
40	88	35	2.9	108	42	3.5	-9	-3.4	52	20.6
50	111	44	3.6	136	53	4.4	-11	-4.3	65	25.7
60	133	53	4.4	163	64	5.4	-13	-5.1	78	30.9
80	179	70	5.9	218	86	7.2	-17	-6.9	105	41.1
100	224	88	7.4	274	108	9	-22	-8.6	131	51.4
150	338	133	11.1	412	162	13.5	-33	-12.9	196	77.1
200	451	178	14.8	550	216	18	-44	-17.1	261	102.9
250	565	222	18.5	688	271	22.5	-54	-21.4	327	128.6
300	678	267	22.3	826	325	27.1	-65	-25.7	392	154.3

### Special EB-1735W EasyMP features explained

#### Wireless connection

- Present directly and securely, including sending video and audio, through a wireless network. Remote management of all your networked projectors via wireless LAN or optional wired LAN.
- Setting up the wireless connection for the first time takes just 60 seconds. Every time after that you just plug the supplied USB key into your computer, wait about 10 seconds and your desktop will be projected.
- Operate 4 projectors simultaneously from one computer, to create a panorama or show different applications.



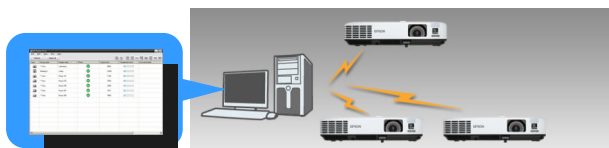
#### 16:9 Aspect Ratio

Screen [inch]	Projection distance						Offset A		Offset B	
	Wide			Tele			Wide = Tele			
	cm	inch	foot	cm	inch	foot	V1 cm	V1 inch	V2 cm	V2 inch
27.5	85	26	2.1	80	32	2.6	-1	-0.3	33	13.2
30	71	23	2.3	88	35	2.9	-1	-0.4	36	14.4
40	96	38	3.2	118	46	3.9	-1	-0.5	49	19.1
50	121	48	4	148	58	4.9	-1	-0.6	61	23.9
60	146	57	4.8	178	70	5.8	-2	-0.7	73	28.7
80	196	77	6.4	238	94	7.8	-2	-0.9	97	38.3
100	245	96	8	298	117	9.8	-3	-1.2	122	47.9
150	368	145	12.1	449	177	14.7	-4	-1.3	182	71.8
200	492	194	16.1	599	236	19.6	-6	-2.3	243	95.7
250	616	242	20.2	749	295	24.6	-7	-2.9	304	119.6
275	678	267	22.3	826	325	27.1	-8	-3.2	335	131.8

#### 16:10 Aspect Ratio

Screen [inch]	Projection distance						Offset A		Offset B	
	Wide			Tele			Wide = Tele			
	cm	inch	foot	cm	inch	foot	V1 cm	V1 inch	V2 cm	V2 inch
28.3	85	26	2.1	80	32	2.6	-3	-1.1	35	13.9
30	69	27	2.3	85	34	2.8	-9	-1.1	38	14.8
40	94	37	3.1	115	45	3.8	-4	-1.5	50	19.7
50	118	46	3.9	144	57	4.7	-5	-1.9	63	24.6
60	142	56	4.6	173	68	5.7	-6	-2.3	75	29.5
80	190	75	6.2	232	91	7.6	-8	-3	100	39.4
100	238	94	7.8	290	114	9.5	-10	-3.8	125	49.2
150	368	141	11.8	436	172	14.3	-14	-5.7	188	73.8
200	479	188	15.7	583	229	19.1	-19	-7.6	250	98.4
250	599	236	19.6	729	287	23.9	-24	-9.5	313	123
283	678	267	22.3	826	325	27.1	-27	-10.7	354	139.3

- Monitor and control projectors remotely using Epson's EMP Monitor software. Configure email alerts to identify maintenance requirements before a problem occurs or save running costs and lamp life by setting timers to switch projectors off when not in use.



- Connect the Epson EB-1735W to a PC with Windows Vista™\* and launch the network projector function (WLAN or LAN): no need to install additional applications, no administrator rights needed.

## Ordering information

<b>Description</b>	EB-1730W LCD Projector
<b>Part Number</b>	V11H271B40**
<b>Barcode</b>	8715946420462
<b>Carton Size</b>	361 x 493 x 193 mm
<b>Carton Weight</b>	4.6Kg

<b>Description</b>	EB-1735W LCD Projector
<b>Part Number</b>	V11H270B40**
<b>Barcode</b>	8715946420479
<b>Carton Size</b>	361 x 493 x 193 mm
<b>Carton Weight</b>	4.8Kg

\*\* The last two letters may vary depending on the version. See the RRP list or Trade Price lists for correct part numbers.

## Optional Accessories

Spare Lamp (ELPLP48)  
**V13H010L48**



Air Filter Set (ELPAF19)  
**V13H134A19**



Soft Carrying Case (ELPKS16B)  
For carrying the projector and a laptop.  
**V12H001K1B**



Ceiling Mount (ELPMB23)  
Can be used with either EPLFP13 or ELPFP14 ceiling pipes.  
**V12H003B23**



Ceiling Pipes  
450mm (ELPFP13)  
**V12H003P13**  
700mm (ELPFP14)  
**V12H003P14**



Ethernet Unit With LAN Cover (ELPAP02B)  
**V12H005M0B**

50" Portable Screen (ELPSC06)  
**V12H002S06**



60" Portable Screen (ELPSC07)  
**V12H002S07**



80" Portable Screen (ELPSC08)  
**V12H002S081**

VGA Computer Cable HD-15 to HD-15 1.8m (ELPKC02)  
**V12H005C02**

VGA Computer Cable HD-15 to HD-15 3.0m (ELPKC09)

## V12H005C09

VGA Computer Cable HD-15 to HD-15 20m (ELPKC10)  
**V12H005C10**



Component Video Cable (ELPKC19)  
**V12H005C19**



## What's in the Box?

**Projector**



**Carry Case**



**Remote Control**



**2 x AA alkali batteries**  
for the remote control



**Wireless LAN Unit (EB-1735W ONLY)**



**Quick Wireless Connection USB Key (EB-1735W ONLY)**



**Password Protect sticker**

When Password Protect is enabled, attach this to the projector in a clearly visible location to increase anti-theft effectiveness.



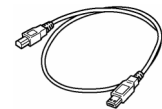
**Power Cable**  
3.0m 240V cable



**Computer Cable**  
Mini D-Sub 15-pin/mini D-Sub 15-pin, 1.8 m (6 ft.)  
Use when projecting images from a computer

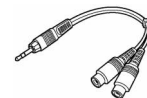


**USB cable (EB-1735W ONLY)**  
3.0m. Use when connecting to a computer with a USB port to use the USB display or wireless mouse function.



**Audio Adapter**

3.5 mm Stereo mini plug to RCA pin jack x 2 red/white, 15 cm. To connect the projector to commercially-available RCA audio cables for sound input or output.



**User Manual Set**

**EPSON Projector Software CDROM**

## Specifications

MODEL	1730W	1735W
Projection System	RGB liquid crystal shutter projection system	RGB liquid crystal shutter projection system
Projection Method	Front / Rear / Ceiling mount	Front / Rear / Ceiling mount
Specification of Main Parts		
LCD		
Size	0.74-inch with MLA	0.74-inch with MLA
Driving Method	Poly-silicon TFT active matrix	Poly-silicon TFT active matrix
Pixel Number	1024000 dots (1280 x 800) x 3	1024000 dots (1280 x 800) x 3
Native Resolution	WXGA	WXGA
Aspect Ratio	16:10	16:10
Pixel Arrangement	Stripe	Stripe
Refresh Rate	50 Hz - 72 Hz	50 Hz - 72 Hz
Projection Lens		
Type	Manual zoom / Manual focus	Manual zoom / Manual focus
F-Number	1.58 - 1.68	1.58 - 1.68
Focal Length	16.1mm - 19.3 mm	16.1mm - 19.3 mm
Zoom Ratio	1 - 1.2	1 - 1.2
Lens Cover	Slide lens shutter	Slide lens shutter
Lamp		
Type	E-TORL 170 W UHE	E-TORL 170 W UHE
Life	3000 hours (High bright) / 4000 hours (Low bright)	3000 hours (High bright) / 4000 hours (Low bright)
Optical System	Dichroic mirror separation & prism combine method	Dichroic mirror separation & prism combine method
Screen Size (Projected Distance)	30" to 300" [ m to m ] (Zoom: Wide), 30" to 300" [ m to m ] (Zoom: Tele) 60" screen 1.26 m -1.55m	30" to 300" [ m to m ] (Zoom: Wide), 30" to 300" [ m to m ] (Zoom: Tele) 60" screen 1.26 m -1.55m
Offset	7.6°	7.6°
Light output(Brightness)		
High Brightness Mode	3000 lm (Colour mode: Game, Zoom: Wide)	3000 lm (Colour mode: Game, Zoom: Wide)
Low Brightness Mode	1900 lm (Colour mode: Game, Zoom: Wide)	1900 lm (Colour mode: Game, Zoom: Wide)
Contrast	2000:1	2000:1
Brightness Uniformity	89%	89%
Colour Reproduction	Full-colour (16.77million colours )	Full-colour (16.77million colours )
Video Quality	Simple Interlace-Progressive conversion	Simple Interlace-Progressive conversion
Sound Output	1W Monaural	1W Monaural
Speaker	35 x 20 mm x 1	35 x 20 mm x 1
Function	Pointer, User logo, A/V mute, Freeze, E-Zoom, Help	Pointer, User logo, A/V mute, Freeze, E-Zoom, Help
Remote Control Infrared Receiver Position / Distance / Directivity	Front & rear (selectable), 6 m Front Right / Left : -60 to +60 degrees Upper / Lower : -30 to +45 degrees Rear Right / Left : -30 to +30 degrees Upper / Lower : -30 to +30 degrees	Front & rear (selectable), 6 m Front Right / Left : -60 to +60 degrees Upper / Lower : -30 to +45 degrees Rear Right / Left : -30 to +30 degrees Upper / Lower : -30 to +30 degrees
Effective Scanning Frequency Range (Analogue)		
Pixel Clock	13.5 MHz to 162 MHz	13.5 MHz to 162 MHz
Horizontal	15 kHz to 92 kHz	15 kHz to 92 kHz
Vertical	50 Hz to 85 Hz	50 Hz to 85 Hz
Effective Scanning Frequency Range (Digital)		
Pixel Clock	25MHz to 135MHz	25MHz to 135MHz
Horizontal	15KHz to 80KHz	15KHz to 80KHz
Vertical	50Hz to 85Hz	50Hz to 85Hz
Adjustment Function		
Foot Adjuster	Front-centre	Front-centre
Tilt Angle	0 to 12 degrees	0 to 12 degrees
Keystone Correction	Vertical : -30 to +30 degrees ( Zoom: Tele)	Vertical : -30 to +30 degrees ( Zoom: Tele)
Auto Keystone Correction	Vertical : -30 to +30 degrees ( Zoom: Tele)	Vertical : -30 to +30 degrees ( Zoom: Tele)
Source Search	Yes	Yes
Auto Detection of RGB/Component	Yes	Yes
Multi Screen Colour Adjustment	N/A	Yes
Operation Panel Protected Function	Yes	Yes
Password Protected Function (Security function)	Yes (Protection of User logo, Network)	Yes (Protection of User logo, Network)
Analogue RGB I/O		
Display Performance	1280 x 800	1280 x 800
Input Signal		
Signal Type	Separate signal	Separate signal
Video Signal	Analogue(0.7 Vp-p,75 ohm/ Mac0.714 Vp-p, 75 ohm)	Analogue(0.7 Vp-p,75 ohm/ Mac0.714 Vp-p, 75 ohm)
Sync. Signal	Separate (positive & negative, bi-polarity 2-5 Vp-p)/ Composite (positive & negative, bi-polarity 2-5 Vp-p)/ Sync-on-green(negative, 0.3 Vp-p)	Separate (positive & negative, bi-polarity 2-5 Vp-p)/ Composite (positive & negative, bi-polarity 2-5 Vp-p)/ Sync-on-green(negative, 0.3 Vp-p)
Audio Signal	500 mVrms / 47 k-ohm	500 mVrms / 47 k-ohm
Input Terminal		
Video	D-sub 15pin x 1 Blue moulding	D-sub 15pin x 1 Blue moulding
Audio	Stereo mini-jack x 1(Audio In only)	Stereo mini-jack x 1 (Audio In or Out are selectable on OSD menu)
Video I/O		
Display Performance	NTSC: 560 lines PAL: 560 lines	NTSC: 560 lines PAL: 560 lines
Input Signal		
Video Standard	NTSC / NTSC4.43 / PAL / M-PAL / N-PAL / PAL60 / SECAM	NTSC / NTSC4.43 / PAL / M-PAL / N-PAL / PAL60 / SECAM
Video Signal	Composite Video(1.0 Vp-p/ Sync. negative, 75 ohm) / S-Video(Luminous0.714 Vp-p, Chrominous 0.286 Vp-p, 75 ohm)/ Component Video(Analogue Y level 0.7 V 75 ohm/ Cr Cb level +/-0.35 V 75 ohm/ sync. negative 0.3 V or 3-state+/-0.3 V on Y)/ RGB Video(0.7 Vp-p,75 ohm/ Mac 0.714 Vp-p,75 ohm)	Composite Video(1.0 Vp-p/ Sync. negative, 75 ohm) / S-Video(Luminous0.714 Vp-p, Chrominous 0.286 Vp-p, 75 ohm)/ Component Video(Analogue Y level 0.7 V 75 ohm/ Cr Cb level +/-0.35 V 75 ohm/ sync. negative 0.3 V or 3-state+/-0.3 V on Y)/ RGB Video(0.7 Vp-p,75 ohm/ Mac 0.714 Vp-p,75 ohm)
Audio Signal	500 mVrms / 47 k-ohm	500 mVrms / 47 k-ohm
Input Terminal		
Video	Composite Video: RCA (Yellow) x 1 S-Video: Mini DIN	Composite Video: RCA (Yellow) x 1 S-Video: Mini DIN
Audio	Component Video: D-sub 15pin Blue moulding (in common with Analogue RGB connector)	Component Video: D-sub 15pin Blue moulding (in common with Analogue RGB connector)
	RGB Video: D-sub 15pin Blue moulding (in common with Analogue RGB connector)	RGB Video: D-sub 15pin Blue moulding (in common with Analogue RGB connector)
	Stereo mini-jack x 1(Audio In only)	Stereo mini-jack x 1 (Audio In or Out are selectable on OSD menu)

USB Display With Audio	N/A	YES
Control I/O		
USB I/O	Type B x1 (for mouse, K/B, control)	Type B x1 (for mouse, K/B, control, USB Display) Type A x1 (for IM-X) Type A x1 (Special I/O)
Network I/O		
Supported Wireless LAN unit	N/A	Standard accessory (WN6501CEP) only
Supported Ethernet unit	N/A	Optional unit (ELPAP02) only
Operating Temperature	5 °C to 35 °C <41 °F to 95 °F> ( 20%-80% Humidity )	5 °C to 35 °C <41 °F to 95 °F> ( 20%-80% Humidity )
Operating Altitude	0 m to 2286 m<0 ft to 7500 ft> ( over 1500 m / 4,921 ft :with High altitude mode)	0 m to 2286 m<0 ft to 7500 ft> ( over 1500 m / 4,921 ft :with High altitude mode)
Direct Power On	Yes	Yes
Start-up Period	6 seconds warm-up period: 30 seconds	6 seconds warm-up period: 30 seconds
Cool-down Period	Instant off (Ceiling : 20 seconds)	Instant off (Ceiling : 20 seconds)
Exhaust Direction	Front Direction of product	Front Direction of product
Power Supply Voltage	100-240 V AC ±10% , 50/60 Hz	100-240 V AC ±10% , 50/60 Hz
Power Consumption		
100-120 V area (JAPAN, USA, etc)		
Lamp On	243 W	243 W
Standby (Network On)	-	9 W
Standby (Network Off)	4 W	4 W
230 V area (Europe etc)		
Lamp On	230W	230W
Standby (Network On)	-	10 W
Standby (Network Off)	5.5 W	5.5 W
Dimension		
Not including protruding parts (D x W x H)	202 x 284 x 65mm	202 x 284 x 65mm
Maximum dimension (D x W x H)	202 x 284 x 73 mm Within Feet	202 x 284 x 73 mm Within Feet
Weight	Approx. 3.74 € bs / 1.7 Kg	Approx. 3.96 € bs / 1.8 Kg
Fan Noise		
High Brightness mode	39• •	39• •
Low Brightness mode	30• B	30• B
Compatible Standard		
Safety		
US	UL60950-1 1st edition (cTUVus Mark)	UL60950-1 1st edition (cTUVus Mark)
Canada	CSA C22.2 No.60950-1	CSA C22.2 No.60950-1
Japan	The electrical appliance safety law / TV receiver	The electrical appliance safety law / TV receiver
Europe	IEC 60950-1 1st edition (CE Marking)	IEC 60950-1 1st edition (CE Marking)
Korea	EK	EK
China	CCC (GB4943)	CCC (GB4943)
Singapore	PSB	PSB
EMC		
US	FCC part 15B class B	FCC part 15B class B
Canada	ICES-003 class B	ICES-003 class B
Japan	The electrical appliance safety law / TV receiver	The electrical appliance safety law / TV receiver
CE(Europe)	EMC Directive • 2004/108/EC•	EMC Directive • 2004/108/EC•
Korea	MIC-Mark	MIC-Mark
China	CCC (GB9254, GB 17625.1)	CCC (GB9254, GB 17625.1)
Australia/New Zealand	C-tick Mark	C-tick Mark
Environmental Protection		
US	State's law for packages	State's law for packages
Japan	Recycling regulation for packages	Recycling regulation for packages
Germany & France	A law for waste product evasion	A law for waste product evasion
CE(Europe)	Dioxide regulation	Dioxide regulation
All countries	Recycling regulation	Recycling regulation
Easy MP Part		
Function		
Projector control and projector management via network	N/A	Yes
AMX Device Discovery		Yes
E-mail notification	N/A	Yes
SNMP	N/A	Yes
Web control		Yes
PC Free	N/A	Yes
Photo Image and Movie		Yes
Network Presentation• Network and USB•	N/A	Yes
PJ-Link	N/A	Yes
Network Projector for Windows Vista	N/A	Yes
Quick Wireless Connection	N/A	Yes
Software		
EMP Monitor Ver.4.22 (for Windows)	N/A	Yes
EMP NS Connection Ver.2.50 (for Windows)	N/A	Yes
EMP NS Connection Ver.2.50 (for Mac)	N/A	Yes
quick wireless connection Ver.1.0 (for Windows)	N/A	Yes
UD Ver.1.4 (for Windows)	N/A	Yes
EMP Slide Maker2 (for Windows)	N/A	Yes
Security ( Wireless LAN )	N/A	WEP• WPA-PSK(TKIP)• WPA-PSK(AES) EAP-TLS• EAP-TTLS/MD5• EAP-TTLS/MS-CHAPv2• PEAP/MS-CHAPv2• PEAP/GTC LEAP• EAP-Fast/MS-CHAPv2• EAP-Fast/GTC
Supplied Accessories		
Power Cable	3.0 m	3.0 m
Computer Cable	1.8 m D-sub 15pin (Male) - D-sub 15pin (Male)	1.8 m D-sub 15pin (Male) - D-sub 15pin (Male)
USB Cable	N/A	1.8 m,USB A/USB B HI-SPEED (New)
Remote Control	Compact type	Compact type
Battery	Manganese AA x 2	Manganese AA x 2
Audio Adapter	3.5 mm stereo miniplug (male) <-> RCA jack x2(female) 15 cm	3.5 mm stereo miniplug (male) <-> RCA jack x2(female) 15 cm
Soft Carrying Case	Yes	Yes
Password Protect Sticker	Yes	Yes
Wireless LAN unit	N/A	Yes 802.11a/11b/11g (WN6501CEP)
Bundled Software	N/A	EPSON Projector Software for Meeting & Presentation(CD-ROM)

Quick Wireless Connection USB Key	N/A	NEW USB Flash Memory
User's Manual Set	Yes	Yes
<b>Optional Accessories</b>		
Spare Lamp	ELPLP48(New) V13H010L48 / V13H010C48 (For ECC)	ELPLP48 (V13H010L48)
Air Filter Set 2 sheets of filters	ELPAF19(New) V13H134A19 / V13H134C19 (For ECC)	ELPAF19 (V13H134A19)
Soft Carrying Case (for PC)	ELPKS16B	ELPKS16B
50" Portable Roll Screen	ELPSC06	ELPSC06
60" Portable Roll Screen	ELPSC07	ELPSC07
80" Portable Roll Screen	ELPSC08	ELPSC08
100 Type Screen	ELPSC10	ELPSC10
Ethernet unit	N/A	ELPAP02B With LAN Unit Cover
Quick Wireless Connection USB Key	N/A	NEW USB Flash Memory
Computer Cable		
HD15 / HD15, 1.8m	ELPKC02	ELPKC02
HD15 / HD15, 3.0m	ELPKC09	ELPKC09
HD15 / HD15, 20.0m	ELPKC10	ELPKC10
Component video cable		
HD15 / RCA male x3, 3.0m	ELPKC19	ELPKC19
Ceiling Mount	ELPMB 23(New)	ELPMB 23(New)
Pipe 450mm	ELPFP13(New)	ELPFP13(New)
Pipe 700mm	ELPFP14(New)	ELPFP14(New)
Warranty	UK: 3 years on-site next business day repair or replace Ireland: 3 years on-site next business day repair or loan	UK: 3 years on-site next business day repair or replace Ireland: 3 years on-site next business day repair or loan

Errors and omissions excepted, all specifications are subject to change without notice



Suite 4, Ferndale Court, West End Road  
Mortimer, Berkshire, RG7 3SY

Tel: 0118 907 0703

Web: [www.projectors.co.uk](http://www.projectors.co.uk)