

TrueTrack™ Room Beacon Quick start guide

This quick start guide will help you to set up your TrueTrack™ Room Beacon for your Rovio™.

Assembling the TrueTrack Room Beacon

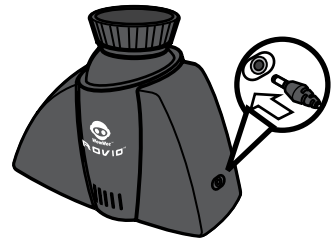
The TrueTrack Room Beacon should be placed where it will not be disturbed. The room should have a flat ceiling no higher than about 12 feet (3.6 meters), with a clear space onto which it can project its infrared beams. Air vents, large light panels or chandeliers, tall objects or furniture might prevent Rovio from detecting the signal that is projected onto the ceiling.

Note that the Beacon must be placed in a room adjoining a room that contains either the Rovio charging dock or another Beacon, otherwise Rovio will not be able to detect a signal while navigating between the two locations. Verify the strength of the signal between the two by driving Rovio through the area and noting the navigation signal strength on the Rovio user interface (refer to page B of this user manual for further information).

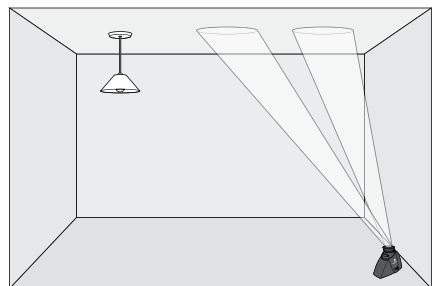
NOTE: In order for Rovio to be able to detect the TrueTrack Room Beacon you must power it at all times.

To assemble the TrueTrack Room Beacon:

1. Place the Beacon on the floor in the room in which you want to use it. Plug the power cable into the port on the back of the Beacon and then plug the power adapter into the electrical outlet.



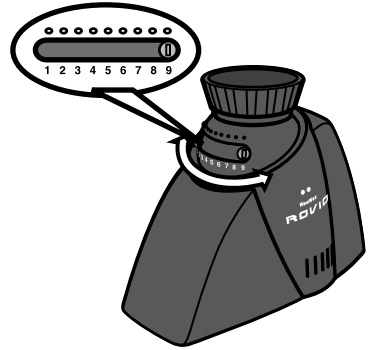
2. Two red dots will project light onto the ceiling. To optimize the signal, point the red dots at the center of the ceiling away from unsmooth surfaces such as lighting fixtures, fans, air vents and corners.



NOTE: The red dots are a guide to help you set up the Beacon. If the light turns off while you are positioning the dots, touch the metal rim to reactivate it. During normal operation the red light will not be lit.

3. Set the Beacon ID selector to the number you have chosen for that Beacon, as illustrated.

NOTE: You cannot set two or more TrueTrack Room Beacons to the same number or Rovio will not be able to recognize them accurately.



TrueTrack Room Beacon set to "9"

Locating the TrueTrack Room Beacon on the Rovio user interface

The Rovio user interface will recognise each individual Beacon according to the Beacon ID you select. The Navigation signal on the Rovio user interface will indicate the Beacon to which the Rovio is closest.

NOTE: The Rovio charging dock will always be recognized 0.



Navigation signal indicating the Rovio charging dock.



Navigation signal indicating the TrueTrack Room Beacon set to position 1.

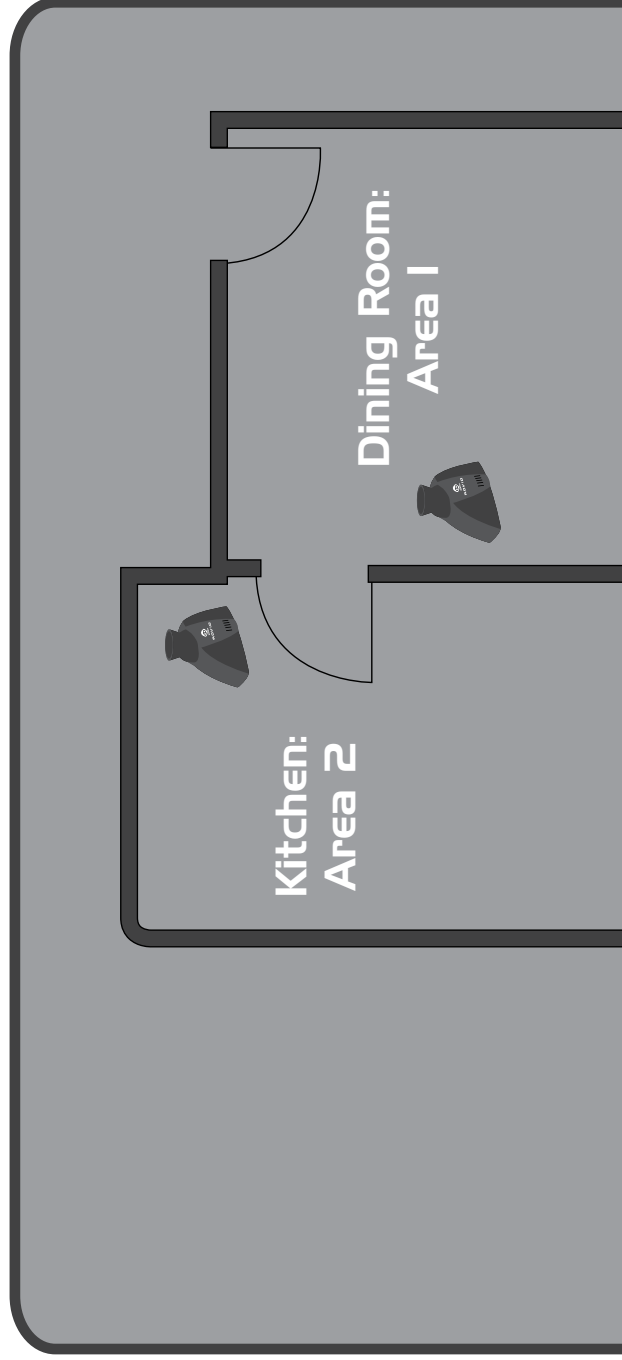
Sample arrangement

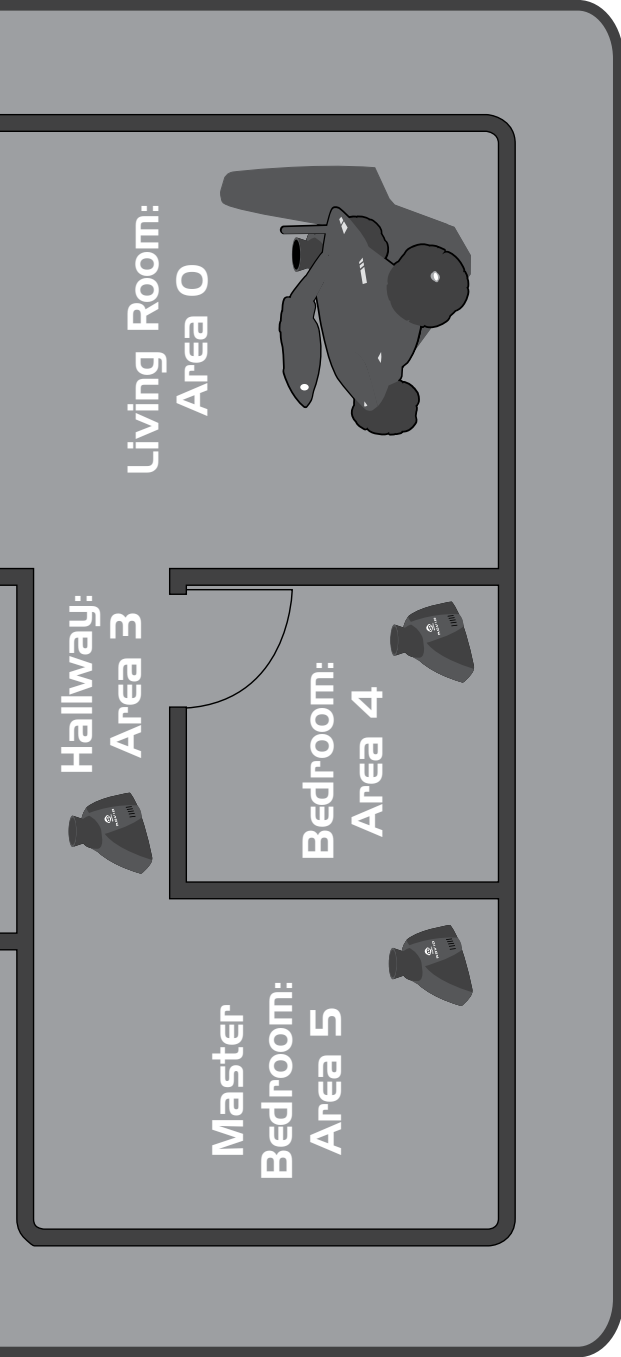
This section will help you to understand how the TrueTrack Room Beacons can be laid out.

The diagram below shows a sample arrangement of the Rovio charging dock and additional TrueTrack Room Beacons. The charging dock is labelled "0" and the additional Beacons are set to "1" - "5" according to the user's preference.

Note that the signals from the Beacons overlap and there are no spaces without coverage. This enables Rovio to receive a continuous signal from the TrueTrack Room Beacons.

NOTE: A single TrueTrack Room Beacon can provide coverage for one room or open area no larger than approximately 25 feet (7.5 meters) in diameter.





For complete information on how to use Rovio, refer to the Rovio User Manual included in the Rovio package or go to www.wowwee.com.