

# ReaddleDocs

## User manual

---

© 2008 Readdle.com

# Contents

## I. Introduction

## II. Copying files to ReaddleDocs

- II.1. Connecting to the iPhone or iPod Touch running ReaddleDocs as shared network drive
- II.2. Using Readdle Storage to copy files from your computer to iPhone or iPod Touch
- II.3. Copying files from MobileMe iDisk to iPhone/iPod Touch
- II.4. Copying files from DAV supported web storage to iPhone/iPod Touch
- II.5. Saving email attachments
- II.6. Downloading files from the Internet using built-in web-browser
- II.7. Saving files from MobileSafari.

## III. Viewing and managing documents with ReaddleDocs

- III.1. Reading documents on the go
- III.2. Moving and deleting files
- III.3. Managing document bookmarks
- III.4. Emailing documents that are stored inside ReaddleDocs

## IV. List of supported file formats

## V. Settings

## I. Introduction

ReaddleDocs is a complete document and file management solution for your iPhone and iPod Touch. It covers almost all possible scenarios for saving files to your device, and supports rich set of formats to be viewed on the go. You can copy documents from desktop computers and online storages, as well as save email attachments and files stored on the Web directly to your device.

ReaddleDocs uses Internet connection only while copying documents and can operate via Wi-Fi, EDGE or 3G. Once file is on your device, you do not need to be online for reading it.

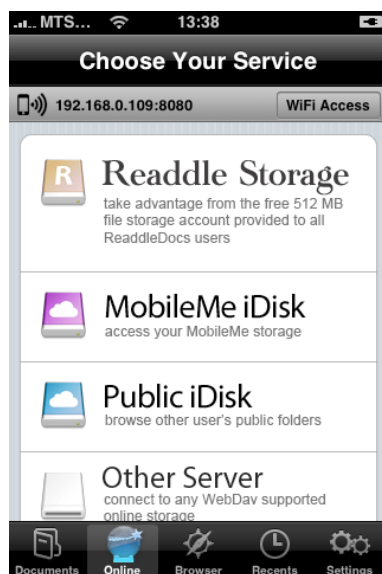
## II. Copying files to ReaddleDocs

ReaddleDocs relies on a network connection of any type, Wi-Fi, EDGE or 3G, to copy files between iPhone/iPod Touch and a computer, as unfortunately, there is no way for developers to use USB port, by Apple's design.

### II.1. Connecting to the iPhone or iPod Touch running ReaddleDocs as shared network drive

ReaddleDocs uses WebDAV protocol to share its data with other computers via WiFi Network. Many popular operating systems and programs have the ability to mount WebDAV resource as a network drive.

In general case, you need to know device IP address and port as well as login and password to access your device (you can configure them on “Settings” tab inside ReaddleDocs).

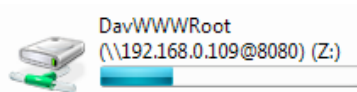


iPhone connected to Windows XP as network drive

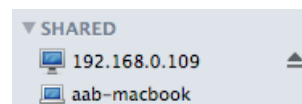


My iPhone (192.168.0.109)

iPhone connected to Windows Vista as network drive



iPhone connected to Mac OS X as network drive

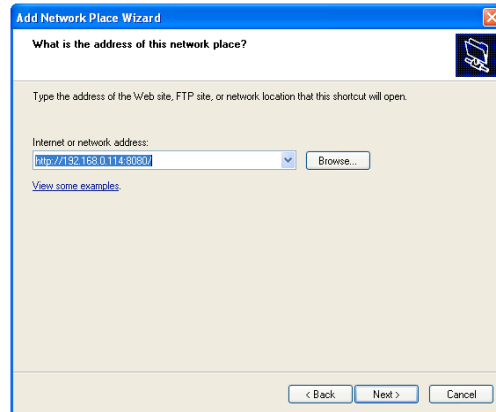


For read-only access you may also connect to ReaddleDocs with any modern web browser. Just type full url like **http://192.168.0.109:8080** into address bar (replace 192.168.0.109 with IP address of your iPhone/iPod Touch) .

Instructions to connect to ReaddleDocs from Windows Vista, Windows XP and Mac OS X 10.4 or later are provided below.

## Windows XP

1. Open the **Start** menu and select **My Network Places**.
2. At the **Network Tasks** panel (you can find it on the left part of the window) click **Add a Network Place**. **Network Place Wizard** will be launched.
3. Click **“Next”** at the **Add Network Place Wizard** welcome screen.
4. Select **“Choose another network location”** and then click **“Next”**.
5. Type "http://" and ReaddleDocs IP address and port. This information is displayed on top of the **“Online”** within the ReaddleDocs application on your iPhone/iPod Touch.
6. Enter the name for this new connection or leave a default one.
7. Press **Finish**. Please ensure that **“Open this network place when I click Finish”** is checked.



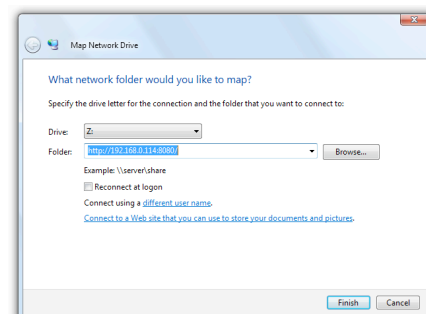
If you enabled password protection inside ReaddleDocs, you will be prompted to enter your username and password. Make sure you are entering username and password which are set in ReaddleDocs **"Settings"** tab. Also, please note that Windows XP may ask you to enter the password several times.

As a result you should get ReaddleDocs network drive mounted and ready to use.

To reconnect to ReaddleDocs in the future, first make sure that ReaddleDocs is running. Open the **Start** menu and click **“My Network Places”**. Find the network drive under Network Locations and double-click it.

## Windows Vista

1. Open the **Start** menu and select **Computer**
2. Click **Map network drive** at the toolbar on top of the **Computer** window.
3. Choose a drive letter in the drop-down menu.
4. Type "http://" and ReaddleDocs IP address and port. This information is displayed on top of the **“Online”** within the ReaddleDocs application on your iPhone/iPod Touch. Make sure the **“Reconnect at login”** box is unchecked.



If you enabled password protection inside ReaddleDocs, you will be prompted to enter your username and password. Make sure you are entering username and

password which are set in ReaddleDocs **"Settings"** tab. Also, please note that Windows Vista may ask you to enter the password several times.

As a result you should get ReaddleDocs network drive mounted and ready to use.

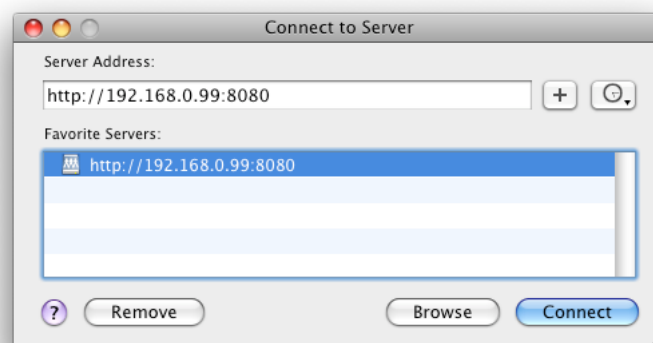
To reconnect to ReaddleDocs in the future, first make sure that ReaddleDocs is running. Open the **Start** menu and click **Computer**. Find the network drive under Network Locations and double-click it.

After the drive is set up, when you decide to enable a password, or change your current username/password for ReaddleDocs you will need to do the following:

1. Open the **Start** menu and select **Computer**.
2. Find the ReaddleDocs network drive under **Network Locations**.
3. Right click on the ReaddleDocs network drive and select **Disconnect**.
4. Set up the drive again as described above.

#### Mac OS X 10.4 or later

1. Click on the Finder icon
2. Select the "Connect to Server..." item in the **Go** menu. You can use ⌘K shortcut as well.
3. Type "http://" and ReaddleDocs server's IP address and port. This information is displayed on top of the **"Online"** within the ReaddleDocs application on your iPhone/iPod Touch.
4. Press **"Connect"** button. You can also add a server to "Favorite Servers" list.



If you enabled password protection at ReaddleDocs, you will be prompted to enter your username and password. Make sure that you are entering username and password which are set in ReaddleDocs **"Settings"** tab.

As a result you should get Shared Disk mounted on your Mac. You can also enable "Connected servers" setting at Finder Preferences→General to show it on the Desktop.

## II.2. Using Readdle Storage to copy files from your computer to iPhone or iPod Touch

Sometime you don't have Wi-Fi connection but need to upload some files from the computer to your device. Uploading files is pretty straightforward and contains following steps:

1. As a ReaddleDocs buyer, you are eligible to get free lifetime Readdle Storage account at <http://readdle.com/register/appstore>. Just choose the plan called "AppStore" when registering. This account will be used to store your documents securely.

**Plan:** You've selected **APPSTORE** plan.  
 This is the best free plan for users of ReaddleDocs application.  
 There are **512MB** of storage / **128** documents, all ReaddleDocs features are available.  
 Anytime later you may switch to other plan.

**Login:**  [check](#)  
 Desired Readdle username. Only letters and numbers.

**E-mail:**   
 Mainly for password recovery and important news. No spam.

**Your name:**   
 Just to address you by name

**Password:**

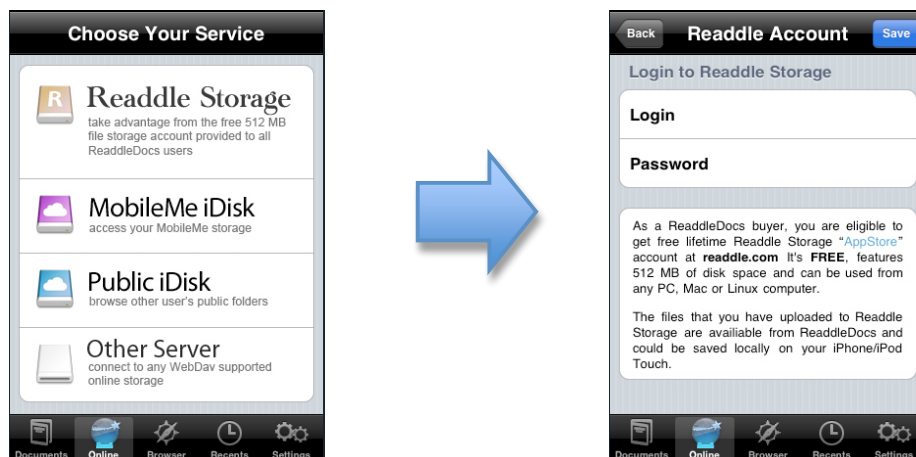
**Confirm:**   
 At least 5 symbols. Both passwords should match. Use only letter and numbers, please.

☐ Remember my password on this computer

I agree to [Terms and Conditions](#) and [Privacy Policy](#)

[Register and start using Readdle](#)

2. After creating the account, go to **Online** tab inside ReaddleDocs, tap **Readdle Storage** label and provide the application with your login and password for Readdle Storage account. ReaddleDocs will catch your account and become able to get files stored online.



3. To upload files online, simply use any modern web browser on your computer. Navigate to <http://readdle.com> and log into Readdle Storage. You will see uploading interface, which is fast and easy to use.
4. After you uploaded your files online, they become accessible via **Online** tab inside ReaddleDocs. Tapping on any of them will save the file locally to the device and open it for reading.

### II.3. Copying files from MobileMe iDisk to iPhone/iPod Touch

---

For people who use MobileMe iDisk to store their files online, ReaddleDocs provides quick and handy access to the documents directly from their devices. Also, you can use iDisk to transfer files from the desktop computer or laptop to the iPhone.

1. After creating the MobileMe account, go to **Online** tab inside ReaddleDocs, tap MobileMe iDisk label and provide the application with your login and password for MobileMe account. ReaddleDocs will catch your account and become able to get files that you store online.
2. After you uploaded your files online, they become accessible via **Online** tab inside ReaddleDocs. Tapping on any of them will save the file locally to the device and opens it for reading.



### II.4. Copying files from DAV supported web storage to iPhone/iPod Touch

---

For people who use popular web storage services to make their documents available for them from anywhere, ReaddleDocs provides handy access to their files directly from the iPhone and iPod Touch.

1. Go to **Online** tab inside ReaddleDocs, tap at Other Server label and provide the application with your login, password, and your service DAV URL. For instance, Box.Net users DAV has URL like <http://www.box.net/dav>
2. After you uploaded your files online, they become accessible via **Online** tab inside ReaddleDocs. Tapping on any of them will save the file locally to the device and open it for reading.

### II.5. Saving email attachments

---

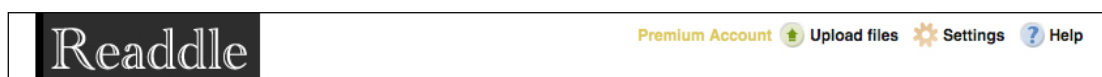
Suppose you have an email with attachment that you want to store on your device because Internet connection is not what you want to depend on. To save attachments

to your device you need to find out your Readdle mail-in address and forward the attachment to it.

### To find out your Readdle mail-in address (this part has to be done only once)

#### On your computer:

1. Register Readdle Storage account or skip to step 2 if you have one already. You can read detailed description how to create new account in previous section of this guide.
2. Log into your Readdle Storage account at [www.readdle.com](http://www.readdle.com).
3. Tap **"Help"** if you are using desktop computer to at that moment or **"Your account"** if you are using an iPhone/iPod Touch.



4. Save email-in address that you will find there. It will look like `your_personal_id@readdle.com`.

#### **Sending files to Readdle Storage by e-mail**

You can upload documents by emailing them directly to [alexto-3c3af9d8a@readdle.com](mailto:alexto-3c3af9d8a@readdle.com). [Read more](#) about this feature.

5. Forward your documents to that address as described in section below.

#### On your device:

1. Log into your Readdle Storage account via **Online** tab inside ReaddleDocs.
2. ReaddleDocs will automatically create Readdle Storage contact in your iPhone/iPod Touch address book.
3. Use standard iPhone way to forward the attachment from Mail program to Readdle Storage.

### To forward attachment to your Readdle Storage account

This part has to be done every time you save an attachment

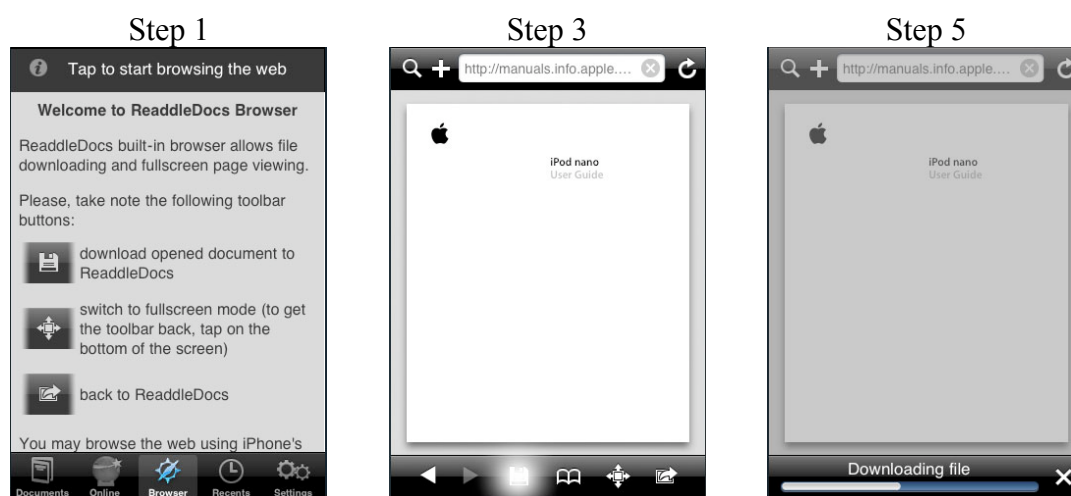
1. Open email that contains file you want to save.
2. Forward it to contact "Readdle Storage" that you have created before. Please note that:
  - Attached files should have proper English names and one of the supported extensions (See section IV for the full list of supported formats)
  - You can specify section using subject: "Section: MySection" (please include "Section:" in subject field). If subject is not set the Unfiled section will be used.
  - You should receive an email confirmation for each processed letter.
  - It may take several minutes (up to 10) to process your attachments.
  - Message text will be ignored.
3. Open ReaddleDocs application and browse to **Online** tab. You can read detailed description of how to browse Readdle Storage from ReaddleDocs in the previous section of this guide.
4. Tap on a file to copy it to your iPhone/iPod Touch.



## II.6. Downloading files from the Internet using built-in web-browser

Sometimes you may find online document that you want to save on your iPhone or you have already got some of your files stored in the Internet. Use built-in web browser to find and save files from the Web directly to your device.

1. Open browser tab and tap the screen to start browsing the web
2. Browse the web until you navigate to the file you want to save on your device.
3. Press download file button at the toolbar.
4. Enter file name and press **"Save"** button.
5. Give Readdle Docs a few seconds to download a file.
6. Switch back to Tabs
7. Navigate to local files and enjoy reading the document!



Please note:

1. If the site uses cookie-based authorization, you can simply visit it with built-in browser, enter login and password and download a file.
2. If the site uses HTTP-based authorization (usually displays browser dialog for entering username and password), you'll need to enter into the built-in browser special URL like:

`http://username:password@site.com`

where username - is your username, password - is your password, site.com - is the url of the site. Note the colon between username and password. It may seem to be a bit complicated (require typing URL with username and password), but it is the only option for ReaddleDocs now, due to limitations of Apple software components.

## II.7. Saving files from MobileSafari.

You can use MobileSafari to browse the web and ReaddleDocs to quickly save documents that you have found there. Just change first part of URL in the address bar from "http://" to "rhttp://" or "rhttp://username:password@" if web site uses HTTP-based authorization, and press **Go**. ReaddleDocs will launch and try to download requested file.

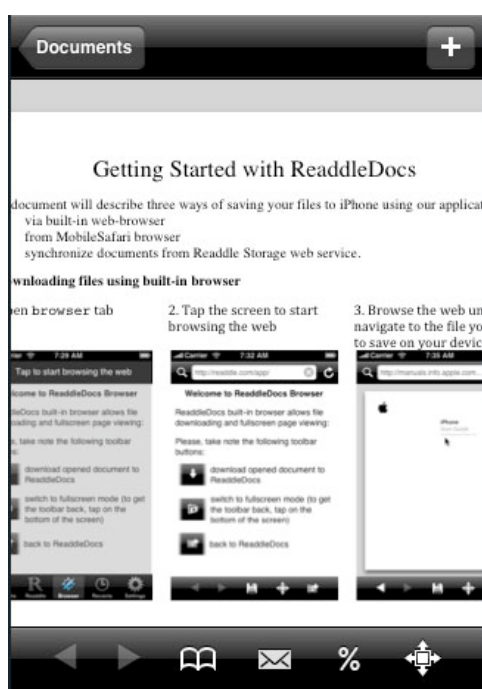
### III. Viewing and managing documents with ReaddleDocs






After you downloaded documents to your iPhone, there are several possible scenarios of what you can do with your documents. You can:

1. Read documents
2. Create bookmarks
3. Move and delete documents
4. Email files directly from ReaddleDocs

#### III.1. Reading documents on the go

To start reading a document just tap its name. After file is loaded you will see document reading screen. You can zoom and scroll the document by using standard iPhone zoom and scroll gestures. Also you can scroll down exactly one page in the full screen mode by tapping the bottom part (about 1/4th) of the screen.



1. To e-mail document you are reading at the moment, tap  icon.
2. You can bookmark any place of the document. To add a bookmark press , enter new bookmark name and tap **Save** button.
3. To load previously saved bookmark tap  button and choose desired bookmark from the list.
4. ReaddleDocs supports fast scrolling through document allowing to easily navigate through large files. Just tap  button to reveal fast scroll slider.
5. The  is used to turn full screen mode on/off.

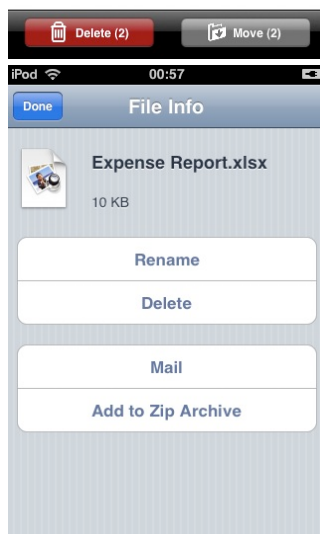
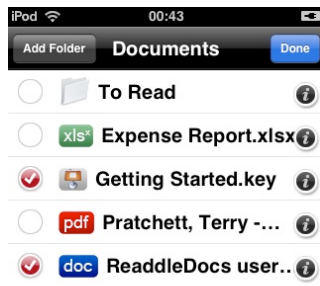
Please note:

1. When you rotate the device into landscape mode, full screen will be turned on automatically.
2. You can move between hyperlinked documents using Safari-like **"Back"** and **"Forward"** buttons.

#### Accessing device photos folder

ReaddleDocs allows user to access photos system folder on your iPhone/iPod Touch. This way you will be able to open images transferred to your device via standard iTunes sync, as well as photos taken directly from the iPhone camera.

### III.2. Moving and deleting files




1. While you are viewing folder content inside ReaddleDocs, press Edit button in top right corner.
2. Mark files and folders you want to move or delete from your device and press appropriate button in the bottom of the screen. You can also create empty folder using **"Add Folder"** button.

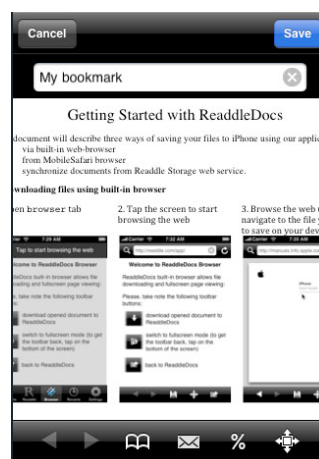
Please note that when you are deleting a folder, all its files and subfolders will be deleted as well.


3. Tap disclosure indicator to open file details.
4. Tap **Rename** button to rename document or a folder of your choose.
5. Use **Mail** button to send file by email without opening it.
6. Press **Add to Zip Archive** to compress document into archive that could be sent by email. This function is especially useful if you want to reduce bandwidth usage.

### III.3. Managing document bookmarks

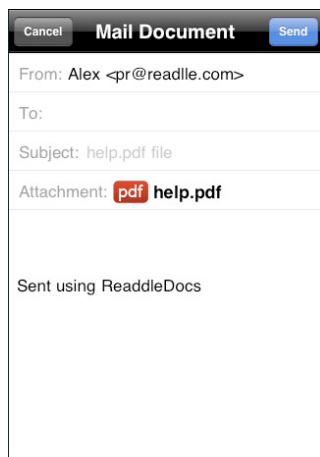
You can Bookmark at any place in the document or use automatic bookmark that ReaddleDocs places when you stop reading the document.

1. To add a bookmark press  button. Enter new bookmark name and press **Save**.




2. To load previously saved bookmark tap  button and choose desired bookmark from the list
3. To edit your bookmark list, tap **Edit** button.

### III.4. Emailing documents that are stored inside ReaddleDocs



You can share all the important information that you have on your iPhone using super fast Readdle mail server.

1. To e-mail document you are reading at the moment, tap  icon.
2. Enter your e-mail address to the “From” field. This is the address that your recipient will reply to.
3. Enter your recipient e-mail address. You can also fill this field with any contact from your address book.
4. Enter e-mail body and tap **Send** button.

## IV. List of supported file formats

ReaddleDocs supports following document formats for viewing:

- Microsoft Office: Word, Excel, Powerpoint (.doc/.docx, .xls/.xlsx, .ppt/.pptx)
- Apple iWorks: Pages, Numbers, Keynote (.pages, .keynote, .numbers)
- Portable document format (.pdf)
- Web pages (.html, .htm)
- Rich text documents (.rtf, rtf<sup>new</sup>)
- Text files (.txt)
- Fiction book (.fb2)
- Plucker e-books (.pdb)
- Images (.jpeg, .jpg, .gif, .png, .tiff)
- <sup>NEW</sup>Media formats (mp3, mp4, 3gp, mov, mpv)

## V. Settings

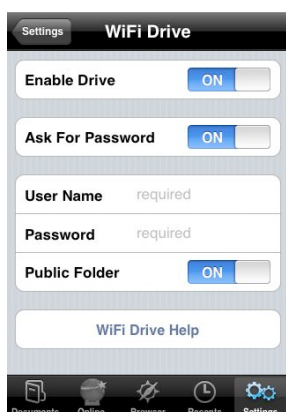
Settings allows you to customize your application, configure WiFi network drive parameters, document viewing, security and other preferences for ReaddleDocs.

### General



In this section you may configure parameters for emailing files directly from ReaddleDocs like **From** field and default signature for emails.

## WiFi Network Drive



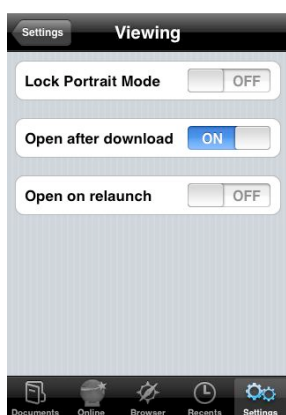
WiFi Drive almost turns ReaddleDocs into portable flash drive. The only difference is that you need active WiFi connection to transfer files from your computer to the iPhone or iPod Touch.

This feature is based on WebDAV protocol and is compatible with both Windows and Mac.

At **WiFi Drive** section you may configure login and password for ReaddleDocs' WebDAV server as well as enable public folder with anonymous access.

Please note that password configured there is for WiFi connections only. To protect your documents from being viewed directly on the iPhone, use **Passkey Lock** feature.

## Viewing

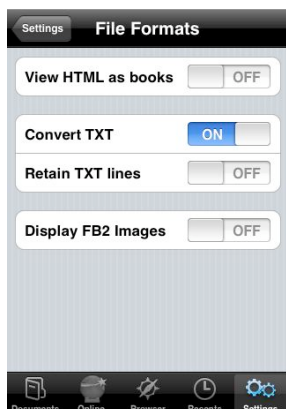


**Lock Portrait Mode** may be used to prevent automatical screen rotation caused by iPhone/iPod Touch internal sensor.

When **Open after download** mode is on, ReaddleDocs will open the document right after it was downloaded to your device. You may want to disable this preset to use ReaddleDocs for carrying unsupported file types without viewing them.

**Open on relaunch** may save you some time by opening the document and scroll position you were reading last time.

## File Formats

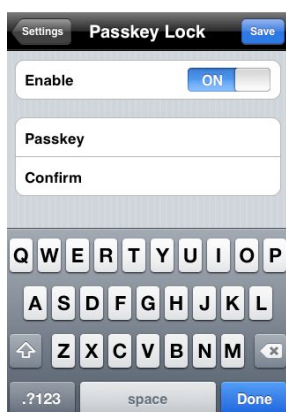


**View HTML as books** formats text to fit the width of the screen and resizes font for more comfortable reading.

**Convert TXT** does the same for txt files.

**Retain TXT lines** keeps line breaks in the source text. Useful for reading texts with short lines like lists or poetry.

## Passkey Lock



Passkey allows you to protect documents from being viewed by other person. Once set, the application will ask the passkey after each launch.

To set password for wireless access to ReaddleDocs, use WiFi Network Drive section.

**Attention!** There is no way to recover your files if you forget the passkey.

## Encodings



At this section you may choose default encoding for HTML and TXT files.