

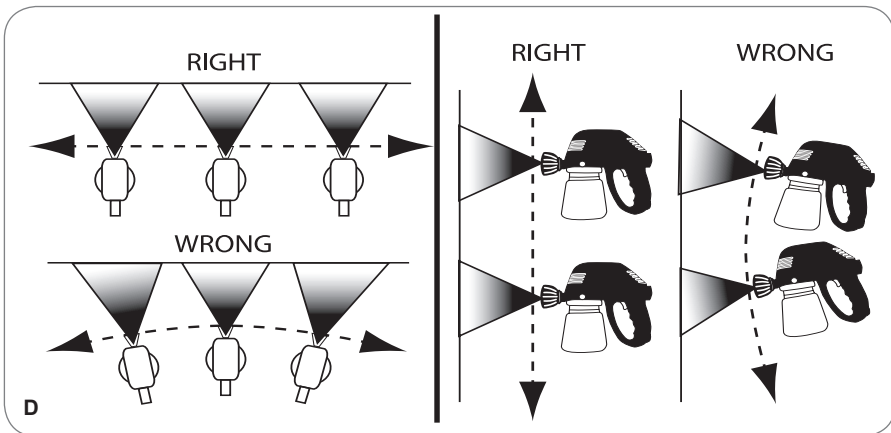
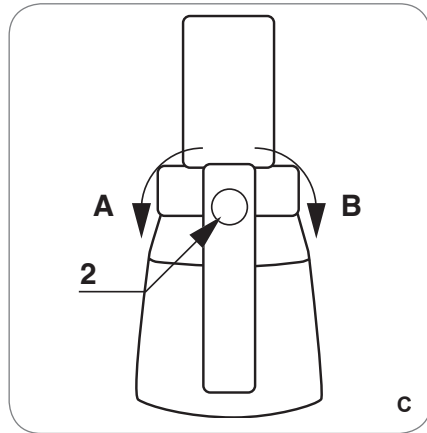
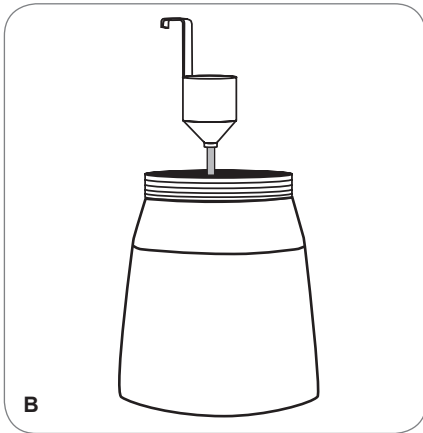
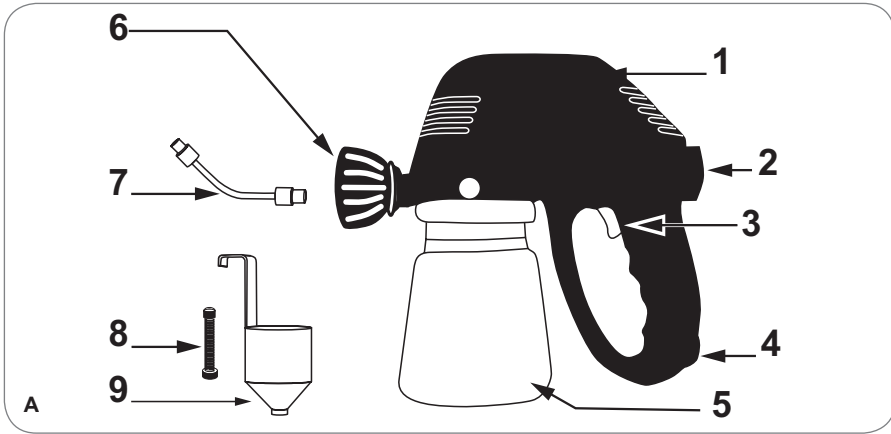
RHYAS[®]
THE PRODUCTS OF CHOICE

SPRAY GUN 120W
SGM4003



Original Instructions

CE



ELECTRICAL SPRAY GUN SGM1008

Thank you for buying this Rhyas product.

By doing so you now have an excellent product, delivered by one of Europe's leading suppliers. All products delivered to you by Rhyas are manufactured according to the highest standards of performance and safety. As part of our philosophy we also provide an excellent customer service, backed by our comprehensive warranty. We hope you will enjoy using this product for many years to come.

The numbers in the following text refer to the pictures on page 2-3



Read the operating instructions carefully before using this device. Familiarise yourself with its functions and basic operation. Service the device as per the instructions to ensure that it always functions properly. The operating instructions and the accompanying documentation must be kept in the vicinity of the device.

Contents

1. Technical specifications
2. Safety instructions
3. Operating instructions
4. Maintenance

1. TECHNICAL SPECIFICATIONS

Machine data:

Voltage	230 V~
Frequency	50 Hz
Power input	120 W
Maximum nozzle flow rate	300 g/min
Container capacity	800 ml
Nozzle diameter	0.8 mm
Weight	1.75 kg
L _{pa} (Sound pressure level)	87.8 dB(A)
L _{wa} (Sound power level)	100.8 dB(A)
Vibration	18.6 m/s ²

Check the machine, loose parts and accessories for transport damage.

Vibration level

The vibration emission level stated in this instruction manual has been measured in accordance with a standardised test given in

EN 60745; it may be used to compare one tool with another and as a preliminary assessment of exposure to vibration when using the tool for the applications mentioned

- using the tool for different applications, or with different or poorly maintained accessories, may significantly increase the exposure level
- the times when the tool is switched off or when it is running but not actually doing the job, may significantly reduce the exposure level

Protect yourself against the effects of vibration by maintaining the tool and its accessories, keeping your hands warm, and organizing your work patterns

Product information

Fig. A

1. Motor housing
2. Output control
3. Trigger switch
4. Handle
5. Paint container
6. Spray basket nozzle
7. Flexible nozzle extension
8. Spare valve
9. Viscosity cup

2. SAFETY INSTRUCTIONS

Explanation of symbols



Denotes risk of personal injury, loss of life or damage to the tool in case of non-observance of the instructions in this manual.



Denotes risk of electric shock.



Wear protective gloves.



Wear a dust mask. Working with wood, metals and other materials may produce dust that is harmful to health. Do not work with material containing asbestos!



Wear eye protection.

Additional safety instructions

- **NEVER SPRAY AT PERSONS** - Never aim the nozzle at another person or animal. Never allow the spray to come into direct contact with the skin.
- **FLASH POINT** - This spray gun must not be used for spraying flammable paints and solvents with a flash point of less than 32 °C
- **VENTILATION** - Always make sure that there is adequate ventilation in the work area when spraying.
- **BASKET NOZZLE** - Always keep the spray basket nozzle in place during use.
- **CONSIDER WORK AREA ENVIRONMENT** - Do not use spray guns where there is a risk of fire or explosion.
- **BEWARE OF ANY HAZARD** - Beware of any Hazard by the material being sprayed and consult the markings on the container or the information supplied by the manufacturer.
- **DO NOT SPRAY** - Do not spray any material where the hazard is not known.
- **USE EYE PROTECTION** - Always use appropriate eye protection to keep hazardous vapours or fumes out of the eyes.
- **WEAR A MASK** - Never operate a spray gun without wearing a face mask.
- **PROTECT YOUR EARS** - Wear ear protectors if the sound pressure exceeds 85 dB(A).
- **MAINTAIN YOUR TOOLS** - Keep your spray gun, paint container and nozzles clean. Do not clean with flammable liquids with a flash point less than 32 °C Inspect the mains lead periodically and if damaged have it replaced by a qualified person.
- **NAKED FLAMES** - Never spray near a naked flame or appliance pilot flame.
- **SMOKING** - Never smoke whilst spraying.
- **THINNING** - Always read the paint manufacturers thinning recommendations or instructions before using paint or other materials.
- **DISCONNECT FROM THE MAINS SUPPLY** - Always disconnect from the mains supply when filling the paint container or cleaning the spray gun.
- **SWITCH OFF WHEN NOT SPRAYING** - Avoid running the unit with the flow rate knob fully closed for any length of time.



We accept no responsibility for damage caused by the use of unsuitable substances, or paints that have not been thinned correctly, and any health hazards that arise from lack of adequate ventilation.

Immediately switch off the spray gun when:

- Interruption in the mains plug, mains lead or mains lead damage.
- Defect switch.
- Smoke or stench of scorched isolation

Electrical safety

When using electric tools, basic safety precautions should always be followed to reduce the risk of fire, electric shock and personal injury. Read all these instructions before attempting to operate this product and save these instructions.



Always check that the mains voltage corresponds to the voltage on the rating plate.



Class II machine. Your machine is double insulated; therefore no earthwire is required.

Replacing cables or plugs

Immediately throw away old cables or plugs when they have been replaced by new ones. It is dangerous to insert the plug of a loose cable in the wall outlet.

Using extension cables

Only use an approved extension cable suitable for the power input of the machine. The minimum conductor size is 1.5 mm². When using a cable reel always unwind the reel completely.

3. OPERATING INSTRUCTIONS

Preparation

Fig. B



Do not use textured wall paints or coatings as this will block the nozzle.

To obtain the best results, it is important that you prepare the surface to be sprayed and thin the paint to the correct viscosity, before you operate your spray gun. Always ensure that the surfaces to be sprayed are free from dust, dirt and grease. Make sure that you have masked the areas that

should not be sprayed, using a good quality masking tape. The paint or fluid to be sprayed should be thoroughly mixed and free from lumps or other particles. Many substances can be sprayed with your spray gun, but always check the manufacturers recommendations before purchasing your paint.

Thinning



Always remember to disconnect from the mains supply before filling the paint container with sprayable material.

Most paints are supplied ready for brush application and will need to be thinned before they are suitable to be sprayed. Follow the manufacturers advice on thinning the paint when used with a spray gun. The viscosity cup will help you to determine the correct viscosity of paint to be used. To determine the correct viscosity, fill the cup to the brim with the paint. Measure the amount of time it takes for the cup to empty back into the can.

The table below shows recommended times for different types of material.

Plastic & latex paint	24 - 28 seconds
Water based paint	20 - 25 seconds
Primers	24 - 28 seconds
Varnishes	20 - 25 seconds
Oil based paints	18 - 22 seconds
Enamel paints	18 - 22 seconds
Aluminium paints	22 - 25 seconds
Car undersealing	25 - 35 seconds
Wood sealers	28 - 35 seconds
Wood preservatives	No thinning required
Wood stains	No thinning required

If the paint takes longer than the recommended time to empty, then further thinning is required. Mix in a small quantity of the appropriate thinner and use the viscosity test until the correct thickness is achieved. Some sprayable materials contain particles and lumps. These materials should be strained before filling the paint container.

Spraying

Fig. C

Fill the paint container with the correctly thinned and strained paint. Connect the spray gun to the mains supply. Aim the spray gun at a piece of scrap material and operate the trigger switch until paint is spraying. Adjust the output control (2) until the required volume of paint is spraying. Turn the output control in a clockwise direction (B) to reduce the flow and anti-clockwise (A) to increase the flow. Adjustment of the output control will affect the spray pattern. A poor spray pattern will concentrate the paint in the centre of the spray and give a blotchy finish. A good spray pattern will give even distribution of paint throughout the pattern.

Spraying techniques

Fig. D

To obtain the best results, keep your spray gun level and parallel to the surface at all times. Keep the nozzle 25 - 30 cm from the surface and spray evenly from side to side or up and down. Do not spray at an angle as this will lead to paint runs on the surface. Use smooth and even strokes. When spraying large areas, use a criss-cross pattern as shown.

Fig. E

Never start or stop the spray gun while it is aimed at the surface to be sprayed. Evenly control the speed of movement of the spray gun. A fast speed of movement over the surface will give a thin coat and a slow speed will give a heavy coat. Apply one coat at a time. If a further coat is required, make sure you observe the manufacturers drying time recommendations before applying a second coat. When spraying small areas, keep the output control on a low setting. This will avoid using too much paint and prevent overspray. Where possible, avoid stopping and starting when spraying an object. This can lead to too much, or not enough paint being applied. Do not tip the spray gun to more than 45°.

Fitting and using the flexible nozzle

Fig. F

The flexible nozzle extension should be used to spray flat or horizontal surfaces. It should also be used in areas with limited access. To fit the flexible nozzle, unscrew the basket nozzle and attach the flexible nozzle in it's place. Replace the basket nozzle on the end of the flexible nozzle and tighten.

4. MAINTENANCE



Make sure that the machine is not live when carrying out maintenance work on the motor.

This machine has been designed to operate over a long period of time with a minimum of maintenance. Continuous satisfactory operation depends upon proper machine care and regular cleaning.

Troubleshooting

1. Motor hums but does not spray or irregular spraying

- Worn swirl head.
 - *Replace swirl head.*
- Pick up pipe not in the right position.
 - *Re-adjust pick up pipe.*
- Blocked pick up pipe.
 - *Clean with thinner.*
- Blocked nozzle.
 - *Clean nozzle.*
- Blocked filter.
 - *Clean with thinner.*
- Control knob needs adjustment.
 - *Adjust.*

2. Atomization is not good

- Volume adjustment is not correct.
 - *Adjust.*
- Paint too thick.
 - *Check viscosity of the paint.*

3. Over painting

- Spray gun not clean, or not lubricated, resulting in piston being stuck in cylinder.
 - *Disassemble spray gun and clean with thinner.*
- Too much paint.
 - *Adjust the volume clockwise to reduce spraying. Two thin coats are better than one thick coat.*
- Viscosity too low.
 - *Check viscosity.*

4. Motor louder than normal

- Spray gun not clean, or not lubricated, resulting in piston being stuck in cylinder.
 - *Disassemble spray gun and clean with thinner.*

5. No spray, no sound

- No electricity.
 - *Check power supply.*

6. Operating sound not right

- Poor output adjustment.
 - *Re-adjust.*
- Not enough paint in the container resulting in air being sucked in.
 - *Refill with paint.*
- Not diluting properly or not passing pick up pipe completely.
 - *Check pick up pipe and viscosity level.*

7. "Orange Skin" excessive fogging

- Incorrect solvent is used.
 - *Use correct solvent.*
- Spray gun too far from the surface.
 - *Hold spray gun closer to the object.*
- Paint too thick.
 - *Thin the paint.*

Cleaning and maintenance

Fig. G



Always remember to disconnect from the mains supply before cleaning the spray gun or paint container.

It is essential that the spray gun is cleaned thoroughly after every use. Failure to clean it will almost certainly result in blockages and it may not operate when you next come to use it! The guarantee does not cover cleaning a sprayer that has not been properly cleaned by the user. The following action must be taken after every use:

- Empty any remaining material from the container.
- Clean the container thoroughly with the thinner that was used.
- Pour some thinner into the container and spray through the spray gun until only clean thinner is coming out of the nozzle.
- Thoroughly clean the paint pick up pipe and filter with thinner.
- Clean the basket and nozzle and remove any other debris or paint that remains.
- Turn the spray gun upside down and apply a few drops of light oil to the two apertures (F). This will lubricate the piston and cylinder.

If your spray gun should require extra internal cleaning, it may be necessary to disassemble it. If so the following action should be taken:

- Remove the plug from the mains socket.
- Remove paint container, pick up pipe and filter.
- Take off the pump assembly.
- Release the nozzle (H), valve (J), piston (K) and spring (L).
- Clean the cylinder (M) and all parts thoroughly with solvent.
- Apply a few drops of light lubricating oil to the piston, spring and cylinder.
- Reassemble the spray gun.

Lubrication

The device does not need any additional lubrication.

Defects

If a defect appears due to a part wearing out, please contact the service center on the warranty card. At the end of these instructions there is an exhaustive overview of the parts that can be ordered.

Environment

To prevent damage during transport, the appliance is delivered in a solid packaging which consists largely of reusable material. Therefore please make use of options for recycling the packaging.

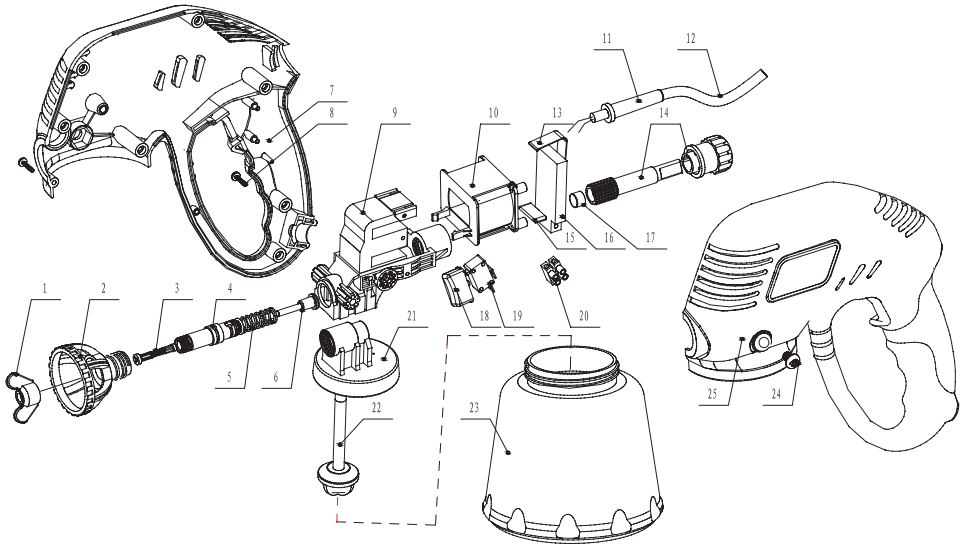


Damaged and/or disposed of electrical or electronic devices must be dropped off at recycling stations intended for that purpose.

Warranty

Read the warranty conditions on the separately supplied warranty card.

The product and the user manual are subject to change. Specifications can be changed without further notice.



Spare parts list

Position	Description	No.
1	Nozzle	402415
2	Locknut	402416
3 - 6	Piston complete	402417
14	Regulator unit	402418
18, 19	Switch complete	402419
22	Suction tube	402420
23	Container	402421

GENERAL SAFETY INSTRUCTIONS

Warning!

Read all instructions. Failure to follow all instructions listed below may result in electric shock, fire and/or serious injury. The term "power tool" in all of the warnings listed below refers to your mains operated (corded) power tool or battery operated (cordless) power tool. Save these instructions.

1) Work area

- a. Keep work area clean and well lit. Cluttered and dark areas invite accidents.
- b. Do not operate power tools in explosive atmospheres, such as in the presence of flammable liquids, gasses or dust. Power tools create sparks which may ignite the dust of fumes.
- c. Keep children and bystanders away while operating a power tool. Distractions can cause you to lose control.

2) Electrical safety

- a. Power tool plugs must match the outlet. Never modify the plug in any way. Do not use any adapter plugs which earthed (grounded) power tools. Unmodified plugs and matching outlets will reduce risk of electric shock.
- b. Avoid body contact with earthed or grounded surfaces such as pipes, radiators, ranges and refrigerators. There is an increased risk of electric shock if your body is earthed or grounded.
- c. Do not expose power tools to rain or wet conditions. Water entering a power tool will increase the risk of electric shock.
- d. Do not abuse the cord. Never use the cord for carrying, pulling or unplugging the power tool. Keep cord away from heat, oil, sharp edges or moving parts. Damaged or entangled cords increase the risk of electric shock.
- e. When operating a power tool outdoors, use an extension cord suitable for outdoor use. Use of a cord suitable for outdoor use reduces the risk of electric shock. Always use tool in conjunction with a residual circuit breaker device.

3) Personal safety

- a. Stay alert, watch what you are doing and use common sense when operating a power tool. Do not use a power tool while you are tired or under the influence of drugs, alcohol or medication. A moment of inattention while operating power tools may result in serious personal injury.
- b. Use safety equipment. Always wear eye protection. Safety equipment such as dust mask, non-skid safety shoes, hard hat, or hearing protection used for appropriate conditions will reduce personal injuries.

- c. Avoid accidental starting. Ensure the switch is in the off position before plugging in. Carrying power tools with your finger on the switch or plugging in power tools that have the switch on invites accidents.
- d. Remove any adjusting key or wrench before turning the power tool on. A wrench or a key left attached to a rotating part of the power tool may result in personal injury.
- e. Do not overreach. Keep proper footing and balance at all times. This enables better control of the power tool in unexpected situations.
- f. Dress properly. Do not wear loose clothing or jewellery. Keep your hair, clothing and gloves away from moving parts. Loose clothes, jewellery or long hair can be caught in moving parts.
- g. If devices are provided for the connection of dust extraction and collection facilities, ensure these are connected and properly used. Use of these devices can reduce dust related hazards.
- h. Use clamps or a vice to hold work. It's safer than using your hand and it frees both hands to operate tool.

4) Power tool use and care

- a. Do not force the power tool. Use the correct power tool for your application. The correct power tool will do the job better and safer at the rate for which it was designed.
- b. Do not use the power tool if the switch does not turn it on and off. Any power tool that cannot be controlled with the switch is dangerous and must be repaired.
- c. Disconnect the plug from the power source before making any adjustments, changing accessories, or storing power tools. Such preventive safety measures reduce the risk of starting the power tool accidentally.
- d. Store idle power tools out of the reach of children and do not allow persons unfamiliar with the power tool or these instructions to operate the power tool. Power tools are dangerous in the hands of untrained users.
- e. Maintain power tools. Check for misalignment or binding of moving parts, breakage of parts and any other condition that may affect the power tools operation. If damaged, have the power tool repaired before use. Many accidents are caused by poorly maintained power tools.
- f. Keep cutting tools sharp and clean. Properly maintained cutting tools with sharp cutting edges are less likely to bind and are easier to control.
- g. Use the power tool, accessories and tool bits etc., in accordance with these instructions and in the manner intended for the particular type of power tool, taking into account the working conditions and the work to be performed. Use of the power tool for operations different from intended could result in hazardous situation.

- h. Damaged switches must be replaced at a customer service repair centre. Do not use power tools that cannot be switched on and off.
 - i. Do not leave power tools unattended while they are switched on. Always switch off the tool and wait until it has come to a full standstill before leaving.
 - j. If the mains cable has been damaged, it must be replaced with a special mains cable. These can be obtained from the manufacturer or the manufacturer's customer service department. The mains cable may only be replaced by the manufacturer, the manufacturer's customer service department or equally qualified persons.
- 5) Battery tool use and care**
- a. Ensure the switch is in the off position before inserting battery pack. Inserting the battery pack into power tools that have the switch on invites accidents.
 - b. Recharge only with the charger specified by the manufacturer. A charger that is suitable for one type of battery pack may create a risk of fire when used with another battery pack.
- c. Use power tools only with specifically designated battery packs. Use of any other battery packs may create a risk of injury and fire.
 - d. When battery pack is not in use, keep it away from other metal objects like paper clips, coins, keys, nails, screws, or other small metal objects that can make a connection from one terminal to another. Shorting the battery terminals together may cause burns of a fire.
 - e. Under abusive conditions, liquid may be ejected from the battery; avoid contact. If contact accidentally occurs, flush with water. If liquid contacts eyes, additionally seek medical help. Liquid ejected from the battery may cause irritations or burns.
- 6) Service**
- a. Please use a qualified expert who uses original replacement parts to repair your power tool. This will ensure proper functioning of the power tool.
 - b. Caution! The use of any accessories or additional tools other than those recommended in this manual may lead to an increased risk of injury. Only use original replacement parts.



DECLARATION OF CONFORMITY SGM4003

(EN) We declare under our sole responsibility that this product is in conformity with directive 2011/65/EU of the European parliament and of the council of 9 June on the restriction of the use of certain hazardous substances in electrical and electronic equipment is in conformity and accordance with the following standards and regulations:

**EN 55014-1, EN 55014-2-16, EN 51044-1, EN 50144-2,
EN 61000-3-2, EN 61000-3-3**

2006/42/EC, 2006/95/EC, 2004/108/EC, 2002/96/EC, 2006/95/EC

Zwolle, 01-05-2014

W. Dekens
CEO Mactool Industrial BV

It is our policy to continuously improve our products and we therefore reserve the right to change the product specification without prior notice.

Mactool Industrial BV • Lingenstraat 6 • 8028 PM • Zwolle The Netherlands

