

New Mercury

User Manual



www.laserpro.com

Content

QUICK MENU	- 4 -
Chapter I - INTRODUCTION	- 5 -
1.1 Principles of CO₂ Laser	- 5 -
1.2 Safety	- 5 -
1.3 Precaution	- 5 -
1.4 Fire Precaution	- 5 -
1.6 Warning Label	- 6 -
1.7 Frequently Asked Questions	- 7 -
1.8 Lens and Manual Focus Gauge	- 12 -
1.9 Instruction of Rotary Attachment	- 13 -
1.10 TOP VIEW	- 14 -
1.11 Operation:	- 14 -
1.12 SIDE VIEW	- 15 -
1.13 Dual Head Installation	- 16 -
Chapter II - RECOMMENDED CONFIGURATION	- 18 -
2.1 Computer	- 18 -
2.2 Scanner	- 18 -
2.3 Software	- 18 -
Chapter III - HARDWARE INSTALLATION	- 19 -
3.1 Cabling Connection:	- 19 -
3.2 Parallel Transmission	- 19 -
3.3 USB Transmission	- 20 -
3.4 Exhaust Ventilation	- 20 -
Chapter IV - SOFTWARE INSTALLATION	- 22 -
4.1 LaserPro New Mercury driver installation	- 22 -
Chapter V - Operating the LaserPro New Mercury	29
5.1 Using the Hardware	29
5.1.1 LCD Display Contrast Adjustment	29
5.1.2 Graphic Control Panel Overview (Description)	29
5.1.3 Graphic Control Panel Navigation Chart	- 32 -
5.1.4 Graphic Control Panel Function Pages	- 33 -
5.2 The LaserPro New Mercury Print Driver	- 60 -
5.2.1 Page Setup and Orientation	- 61 -
5.2.2 Color Management	- 63 -
5.2.3 Using the LaserPro New Mercury Print Driver	- 64 -
5.2.3.1 New Mercury Print Driver >> Option Page	- 64 -
5.2.3.2 New Mercury Print Driver >> Pen Page	- 71 -
5.2.3.3 New Mercury Print Driver >> Advance Page	- 74 -



5.2.3.4 New Mercury Print Driver >> Paper Page	78 -
5.2.3.5 New Mercury Print Driver >> Language Page	80 -
5.2.3.6 New Mercury Print Driver >> Raster Page	81 -
5.2.3.7 New Mercury Print Driver >> Stamp Page.....	84 -
Chapter VI - BASIC MAINTENANCE	86 -
6.1 Cleaning the mirror..-	86 -
6.2 Cleaning the focus lens ..	88 -
Chapter VII - TROUBLE SHOOTING	89 -
7.1 Quality Problems.....	89 -
7.2 Non-operational Problems.....	89 -
Appendix A. 3D Function	90 -
Tip for 3D Application	90 -
Appendix B. Modifying settings for better engraving quality.....	91 -
Appendix C. Specification.....	91 -



QUICK MENU

1. Connect the air exhaust system.
2. Set up computer and connect with the engraving system properly.
3. Turn **ON** the host computer system.
4. Install the NEW MERCURY Driver. (for first time use only)
5. Use Windows-based program (such as CorelDraw, PhotoShop, Illustrator, AutoCAD, etc.) to operate with the engraver.
6. Turn **ON** the engraver. The lens carriage moves to the home position (upper left corner) and the working table moves down 50mm approximately after system initialization. (If a rotary attachment is installed, the working table will move down to the bottom.)
7. **Auto-focusing:** Press the **AUTO FOCUS** button and the table will move upward and stop at the focal position automatically.
8. The following is an example by using **CorelDRAW V.11**. Graphics can be outputted to the machine by following the instructions below to start work.
 1. **Layout**
 2. **Page Setup**
 3. **Set from Printer**, choose **Portrait**
 4. **OK**
 5. Edit desired file (picture etc.)
 6. **File**
 7. **Print**
 8. **Properties**
 9. **Options**, choose **desired Mode** (refer to Fig. 11) then set up proper resolution, power and speed
 10. **OK**
 11. **Print**
 12. File name is shown on LCD then press **START**.

NOTE:

- Turn on the air exhausting system before engraving.
- The **maximum loading weight** of working table is **20 kg**.

NOTICE:

1. In order to match New Mercury driver's color. Make sure that the Color Management option is disabled on your **CorelDRAW V.11** or **later**. Please follow these steps:
Tools → **Color Management** → **Color Management Off** → **OK**.
2. When operating with **CorelDRAW V.11** or later version, please choose **Layout** → **Page Setup** → **Set From Printer**.
3. When using the available artworks from the Clipart of CorelDRAW, **to prevent the hidden vector lines shown on your engravings**. Please do as follows:
Choose a file from Clipart, go to **Bitmaps** → **Convert to Bitmap**, after converting the file, go to **Bitmaps** → **Mode** → **Grayscale** → **OK**.



Chapter I - INTRODUCTION

1.1 Principles of CO₂ Laser

LASER is a **L**ight **A**mplification by **S**timulated **E**mission of **R**adiation.

A CO₂ laser works by exciting the molecules of a carbon dioxide gas mixture.

To engrave, the beam is focused through a lens. The intensive beam can vaporize the surface of the material leaving an engraved image or, in some cases, cutting through the material.

1.2 Safety

Laser engravers that have the CDRH safety rating of Class 1 are required to have key safety features such as an enclosed laser beam and safety interlock mechanisms designed to protect the operator. In addition to the safety features of a Class1 machine, the LaserPro New Mercury has been equipped with a red guidance pointer. This red dot allows the operator to safely see the focal point of the laser beam. It also gives New Mercury the improved CDRH safety rating of 3R.

1.3 Precaution

1. The suitable temperature for working environment is 15°C~30°C (60°F~86°F).
2. Always wear certified safety goggles. Reflective materials such as mirrors, enameled brass and anodized aluminum may reflect a portion of the invisible laser radiation. This may cause severe eye damage if appropriate safety goggles are not worn.

NOTE: Each LaserPro laser machine is equipped with a safety goggle. Please contact LaserPro if more is required. Goggles with the following specifications should be used.

190-398 nm OD5+
10,600 nm OD5+
Visible light transmission: 92.9%

3. Do not attempt to modify or disassemble the laser system at any time.
4. Wear appropriate safety goggles especially when engraving with mirrors or coated metals such as enameled brass and anodized aluminum.
5. Good ventilation is required to remove odors and vaporized materials to the outside of the building or structure. An exhausted system is recommended.
6. Do not work with reflective metals, heat sensitive surfaces or other materials that may produce toxic substances, such as PVC and Teflon.
7. A fire extinguisher should be available on hand at any time.
8. Never leave the machine unattended during operation.
9. Follow the recommendations for maintaining and cleaning your system. Not only will this enable you to engrave efficiently, it will ensure that your machine runs safely as well.

1.4 Fire Precaution

1. When cutting materials that easily catches fire, such as acrylic, wood or paper, it is advised to have the air compressor turned on to prevent flame.
2. If a cutting table, or a honeycomb table, is used for cutting purpose, do not leave any



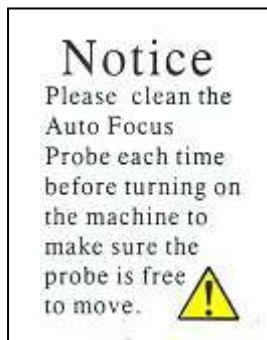
material underneath, as when material at top is cut through, the material at below will be burned easily due to trapped heat.

3. Do not run the machine while it is unattended, especially with materials mentioned above.

1.5 The Safety Interlock System

The LaserPro NEW MERCURY is complete with a safety interlock system that automatically shuts off the power supply to the laser whenever the top or front door is opened. There are magnets on the top and front door, which activate this safety mechanism. Do not attempt to remove or modify these magnets or any other component of the safety interlock system.

1.6 Warning Label



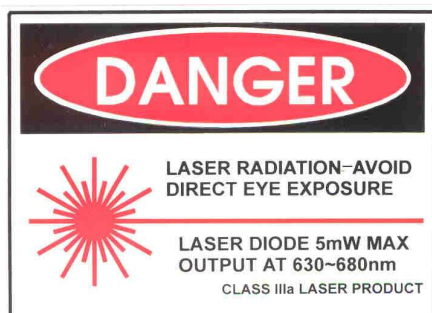
On the surface of Carriage



On the front cover of Laser Tube



On the front center of the top door



On the backside of the machine





On the upper left side of the machine

1.7 Frequently Asked Questions

1. What materials can be processed by CO₂ laser?

Virtually any materials such as acrylic, wood, fabrics, glass, leather, marble, stone, rubber stamps, paper products, coated metals, plastics (especially micro plastic developed by IPI, Spectrum and Rowmark etc.) other hard-surface materials blended with polyester and fibers (Corian™, Fountainhead™, and Avonite™ etc.) or laserable simulated products of stone, wood and metal etc.

Bare metals cannot get a good engraving result by using CO₂ laser. However, **special kind of spray** has been developed that allows CO₂ laser to mark on the bare metals such as stainless steel, aluminum etc. Do not engrave or cut materials which are heat sensitive or toxic substances can be produced (**e.g. PVC and Teflon coating**).

2. What is the life cycle of the laser source?

The life cycle of laser source is around 20,000 hours.

3. What is the main purpose of air assist system?

The air assist system can provide a much better engraving & cutting effect, as it will blow away vaporized particles and prevent fire due to overheating.

4. What does cutting table do?

The cutting table, also known as honeycomb table, is especially useful for vector cutting application. The space between materials and working table, gapped by cutting table, allows heat and smoke to be disbursed and vented out which may otherwise cause bad cutting effect.

5. What is the maximum engraving speed of LaserPro New Mercury?

The maximum engraving speed of LaserPro New Mercury is 1066 mm/sec (42 inch/sec). When engraving an A4 (18 x 28 cm) size square with 250dpi at full speed, it takes LaserPro New Mercury about 18 minutes to complete.

6. How to engrave an extremely long working piece?

The back door (or panel) of LaserPro New Mercury can be removed by taking away the screws. For a better ventilation and safe purpose, this special design is to prevent the back door being opened without notice during operating. However, you have to use magnetic devices to short the connector of the magnetic switches on both side of the





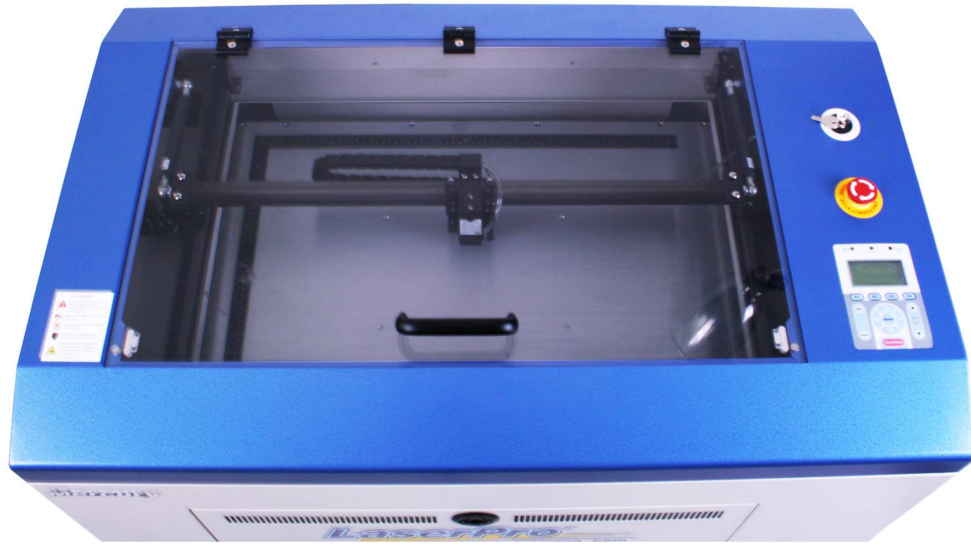
front door while opening for engraving extremely long work-piece. When doing so, make sure that you wear safety goggles to operate the machine.

Front View



Top View





Back View



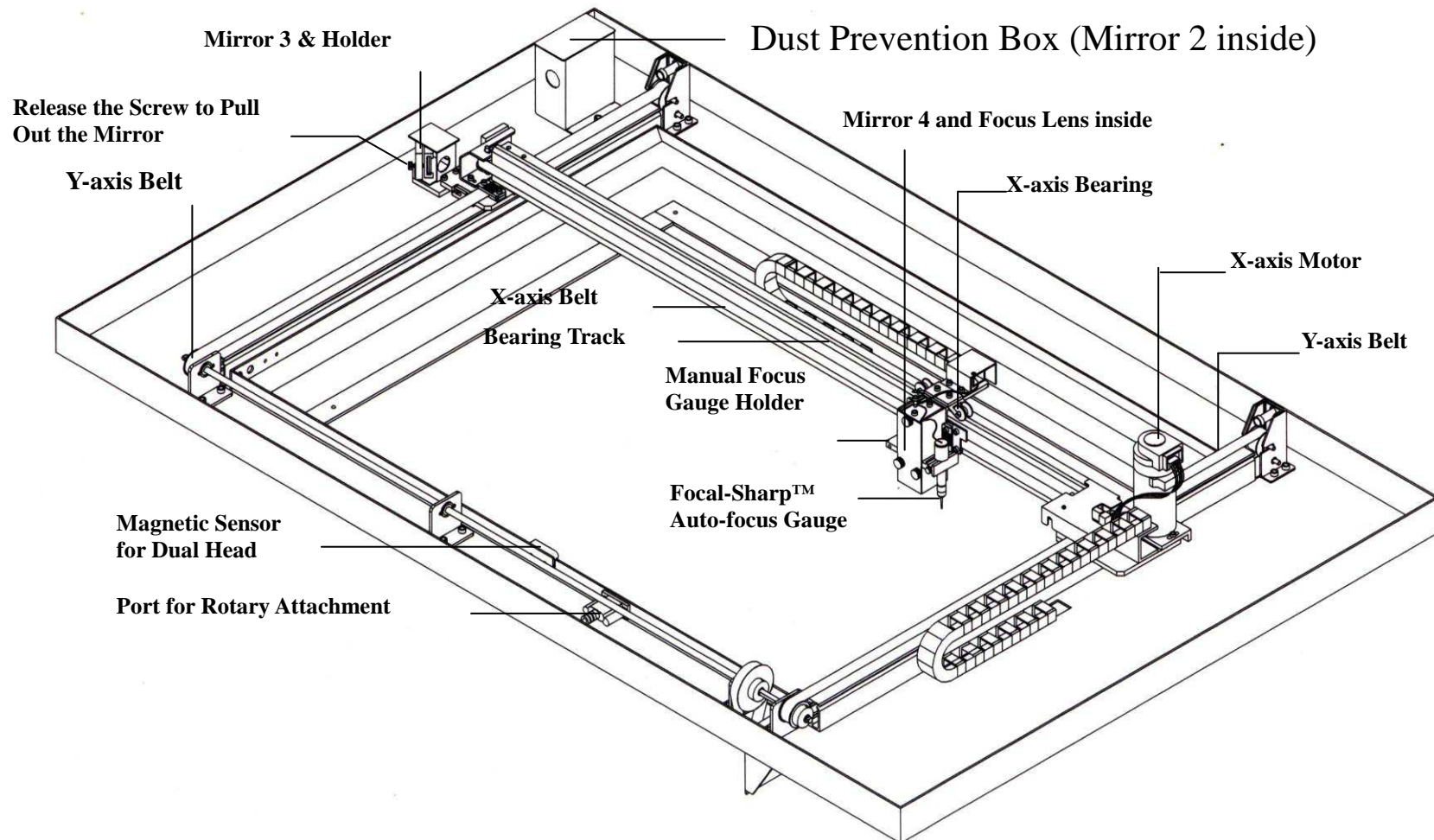
Left View



Right View

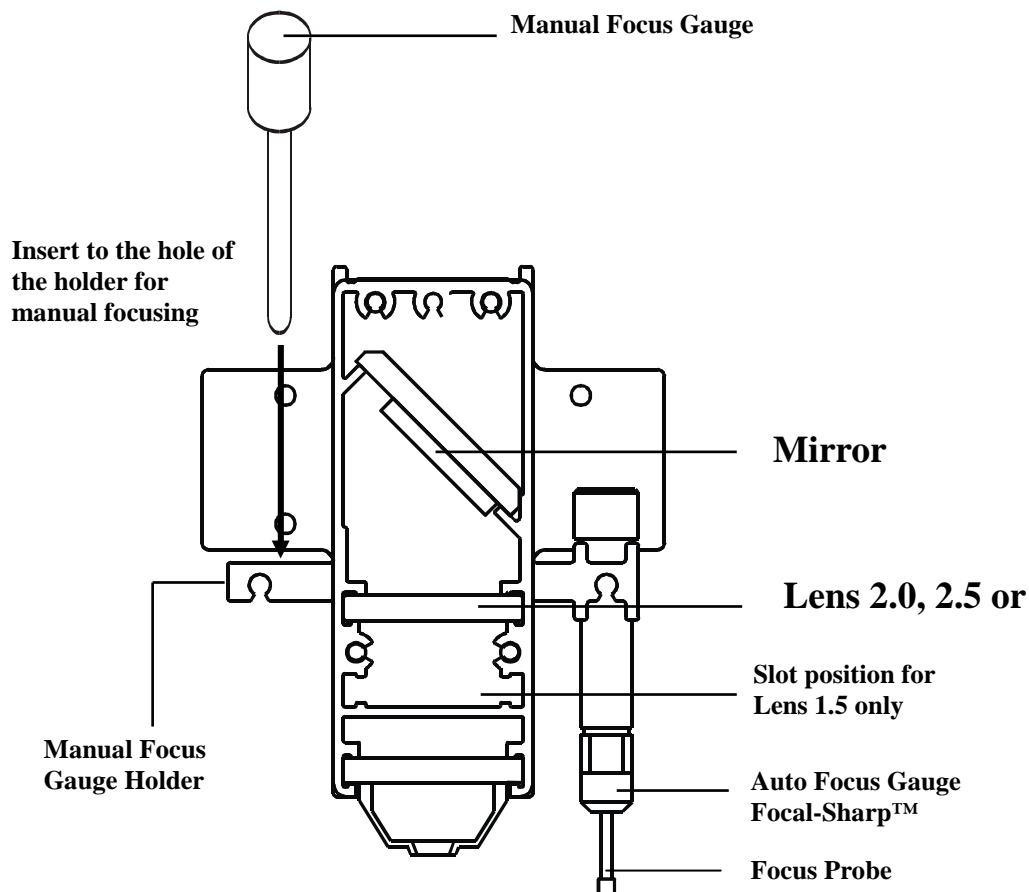


Motion System



1.8 Lens and Manual Focus Gauge

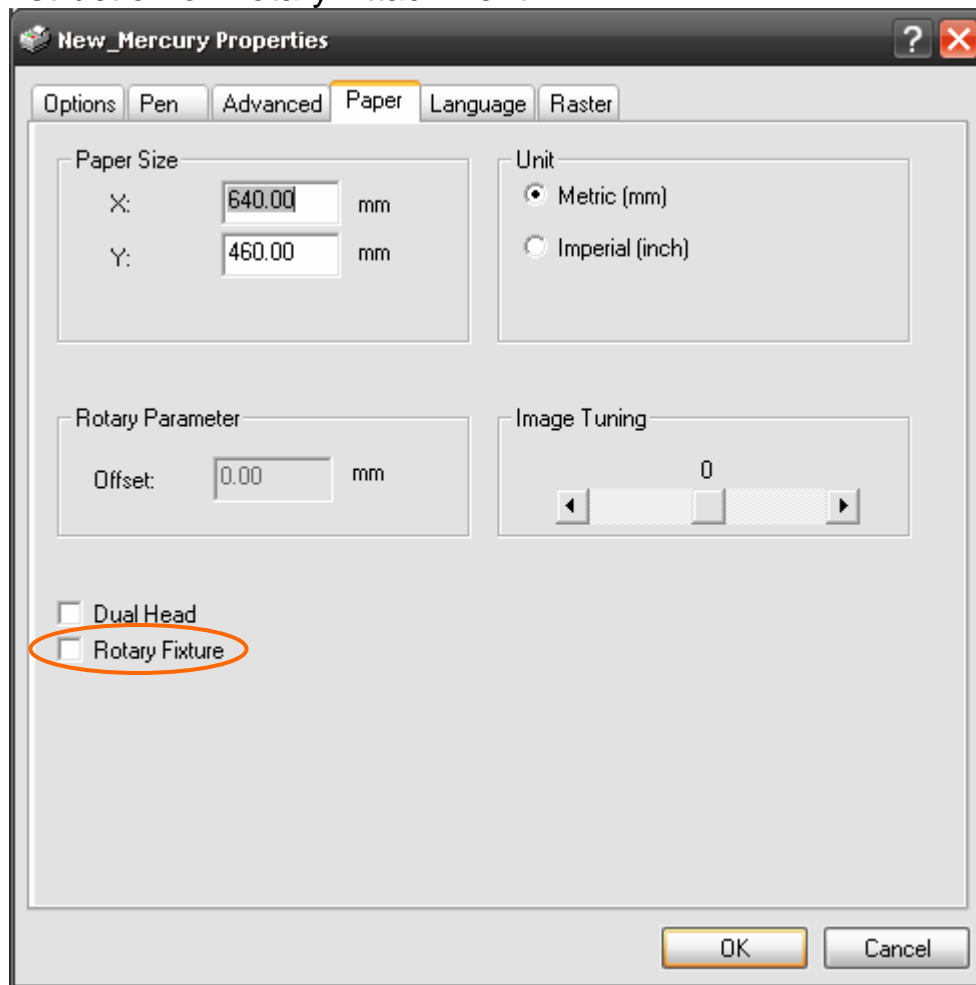
Focal Length		Matched Color	
		LENS	MANUAL FOCUS GAUGE
1.5"	Option	Purple	Blue (same as 2.0")
2.0"	Standard	Blue	Blue
2.5"	Option	Gold	Gold
4.0"	Option	Red	Red



Focus Carriage Assembly



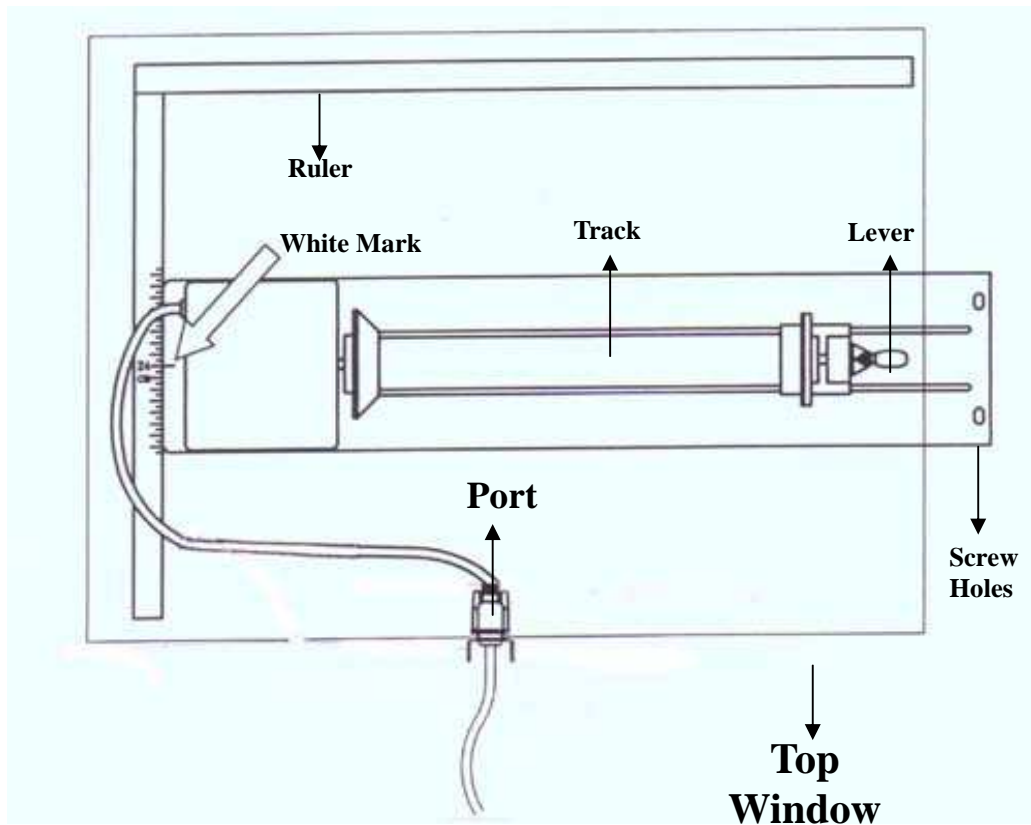
1.9 Instruction of Rotary Attachment



- 1) Turn off the power of the engraver.
- 2) Put the rotary attachment onto the engraving table. Ensure the two screw holes should match the two corresponding holes on the table and the white mark of the left side aligns to the position of 24cm (9.45 inch) on the ruler, and then tighten the screws.
- 3) Plug the cable of the rotary attachment into the port in the middle front of the engraver.
- 4) Turn on the power and the engraving table moves down to the lowest position automatically.



1.10 TOP VIEW



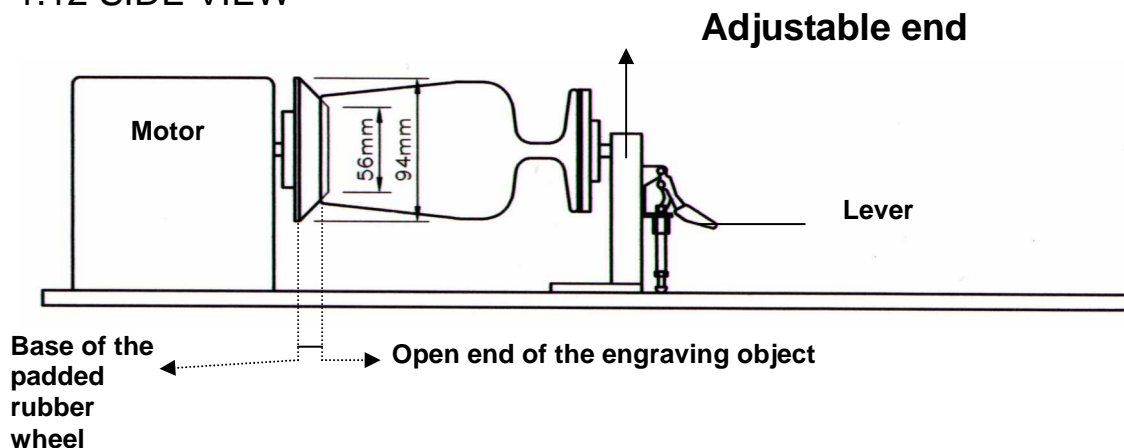
1.11 Operation:

NOTE: The maximum length of the engraving object is 450 mm (17.71 inch). The maximum diameter of the padded rubber wheel is 94 mm. To get an accurate engraving position during rotating, it is better that the diameter of the engraving object is not smaller than 90mm (3.54 inch). However, the maximum diameter of the loaded object is 180mm and the limited loading weight is 7 Kg (15.4 Lb.).

1. Measure the diameter of the engraving area for setting up the software operation before engraving.
2. Lift the lever, loading the engraving object, slide the adjustable end to the bottom of the object firmly, then lower the lever of the fixture to secure it in place shown as in Fig II.
3. If the engraved object is too small, please use 4-inch lens to prevent collision between carriage and rotary attachment devise.



1.12 SIDE VIEW



4. Turn on the power. The rotary attachment is detected and the working table moves down to the bottom automatically. The system initializes to the home position, at the same time.
5. Set up focus.
6. The following is an example of engraving process by using **CorelDRAW V.11** or after version
 - a. **File**
 - b. **Print Setup**, choose **NEW MERCURY**
 - c. **Properties**
 - d. **Paper**, select **Rotary Fixture**
 - e. key in the **Offset** value, **X** value and **Diameter** value
 - f. **OK**

NOTICE:

When doing the Print Setup under print driver setting, please always choose **Layout** → **Page Setup** → **Set From Printer**, no matter operating with CorelDraw V.11, or after version.

NOTICE:

Please always choose **Portrait** for **Page Setup** on CorelDraw V.11 no matter X or Y value whichever is larger.
Layout → **Page Setup** → **Set From Printer** → **Portrait**

Define engraving location by moving the arrow keys and the red point will show the right position you want. Moving the red point from rotary home position (at the base of the padded rubber wheel) to the open end of the engraving object, the **Offset value** will be displayed on LCD.

Caution:

- Adjust the working table and set up the focus **under STOP status**.
- **Set up focus after initializing** the system to prevent the carriage hit the engraving object.



1.13 Dual Head Installation

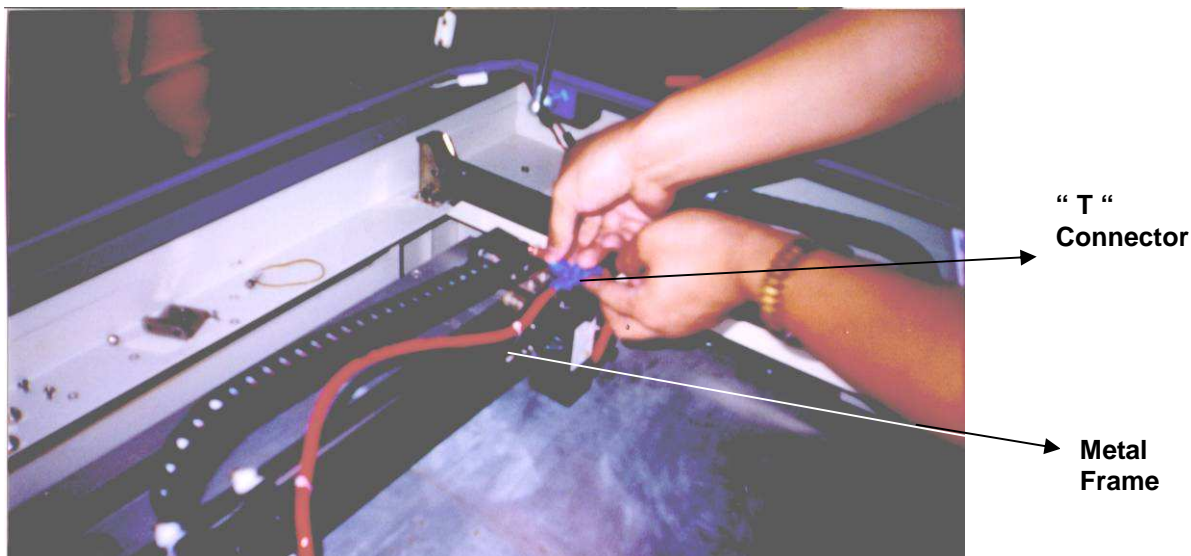
Step 1 : Turn off the system.

Step2 : Put the dual head carriage onto the X-axis belt bearing track.



Step3 : Cut 25mm (1 inch) off the air assist tube on the original lens carriage.

Step4 : Connect the air assist tube of the dual head with that of original carriage by "T" connector.



Step5 : Screw the metal frame which is attached to the right side of dual head to the original lens carriage.

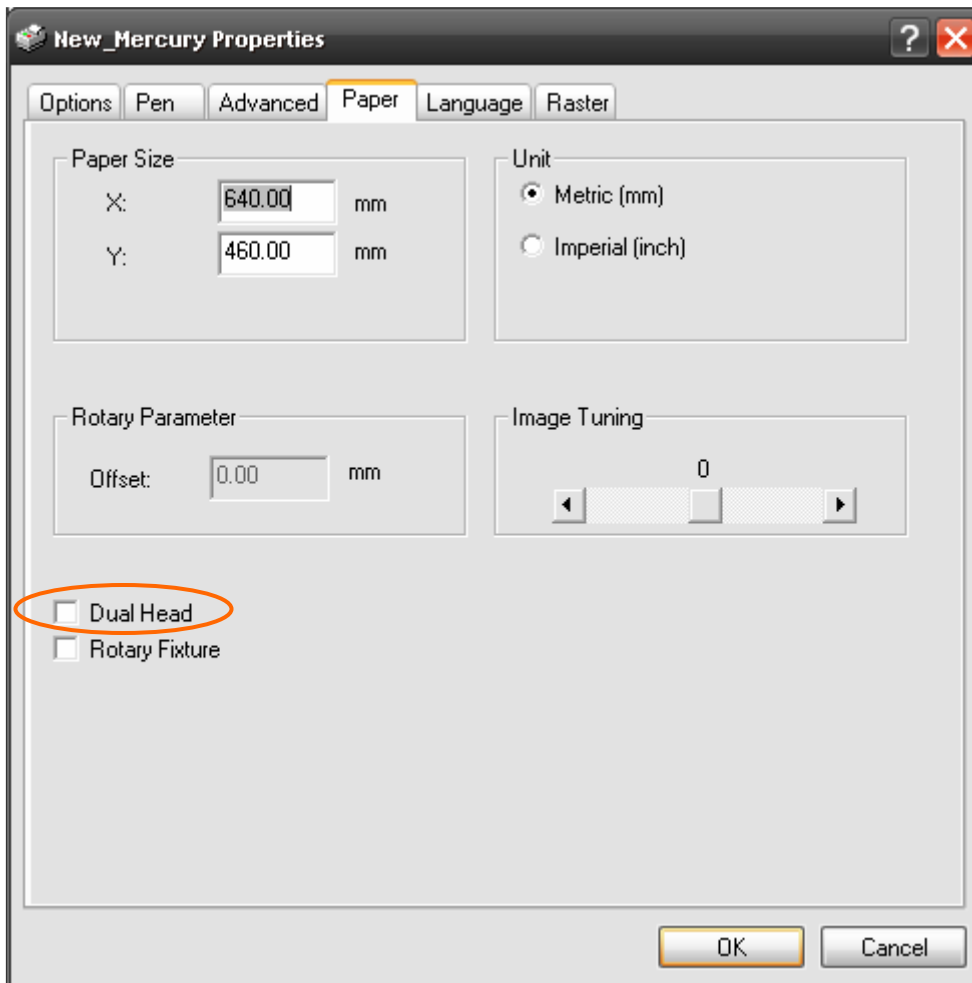
Step6 : Turn on the power to test whether the dual head is installed properly. During initiation, the system will detect the dual head carriage when it moves the lens carriage to front-right side, so it would not crash the dual head carriage when move the origin position.

Note :

1. Keep the screws on the lens carriage after taking off the dual head.



2. Put the black cap on the "T" connector after taking off the dual head to prevent air flowing leaking.
3. Please choose dual head item from Paper option of printer properties before outputting a graph with dual head carriage.



Chapter II - RECOMMENDED CONFIGURATION

2.1 Computer

Your PC must be sufficient to equip with Window XP at least.

We recommend the specification of PC for better work as following.

CPU	Pentium at least
DRAM	32 MB RAM or up
FDD	One 3.5" 1.44 MB floppy
HDD	1.2 GB Hard Drive or up
SVGA	15" Super VGA Monitor

★ ★ On Board Parallel Mode (Setup from PC BIOS):

SPP—Preferred Mode

ECP—Cable length less than 1.8 meters

2.2 Scanner

Flat Bed

Minimum resolution: 200 DPI

2.3 Software

GCC driver (designed under Window XP or higher level)

Windows Window XP or higher

CorelDRAW Version 7.0 or higher version

Any program that can output HPGL commands



TIP

AutoCAD is the preferred application software for mass cutting production when working with the LaserPro New Mercury for better output performance.



Chapter III - HARDWARE INSTALLATION

Caution:

- Turn all equipment off before making any connection.
- Check the plug of the power cord to see if it matches the wall outlet. If not, please contact your dealer.

3.1 Cabling Connection:

1. Insert the power cord (male) into a grounded power outlet.
2. Plug the other end (female) into the engraver. The engraver has been design to autoswitch from 100 ~ 240 VAC automatically (40W and above laser engravers require 220~240 VAC only).
3. The laser engraver can communicate with a computer through either the serial (RS-232C) port, the parallel port, or the USB port.



Power on/off
Switch



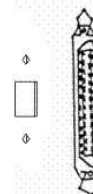
15 AMP
resettable fuse



3 AMP
resettable fuse



AC Power
Connector



Parallel
Interface
Connector

USB Connector

3.2 Parallel Transmission

Connect a parallel cable to the engraver (parallel port) then to the parallel port of the host computer.

Caution:

Never use a mechanical switch box when a second printer port is required.



The electrical surges can cause damage to the computer and the engraver.

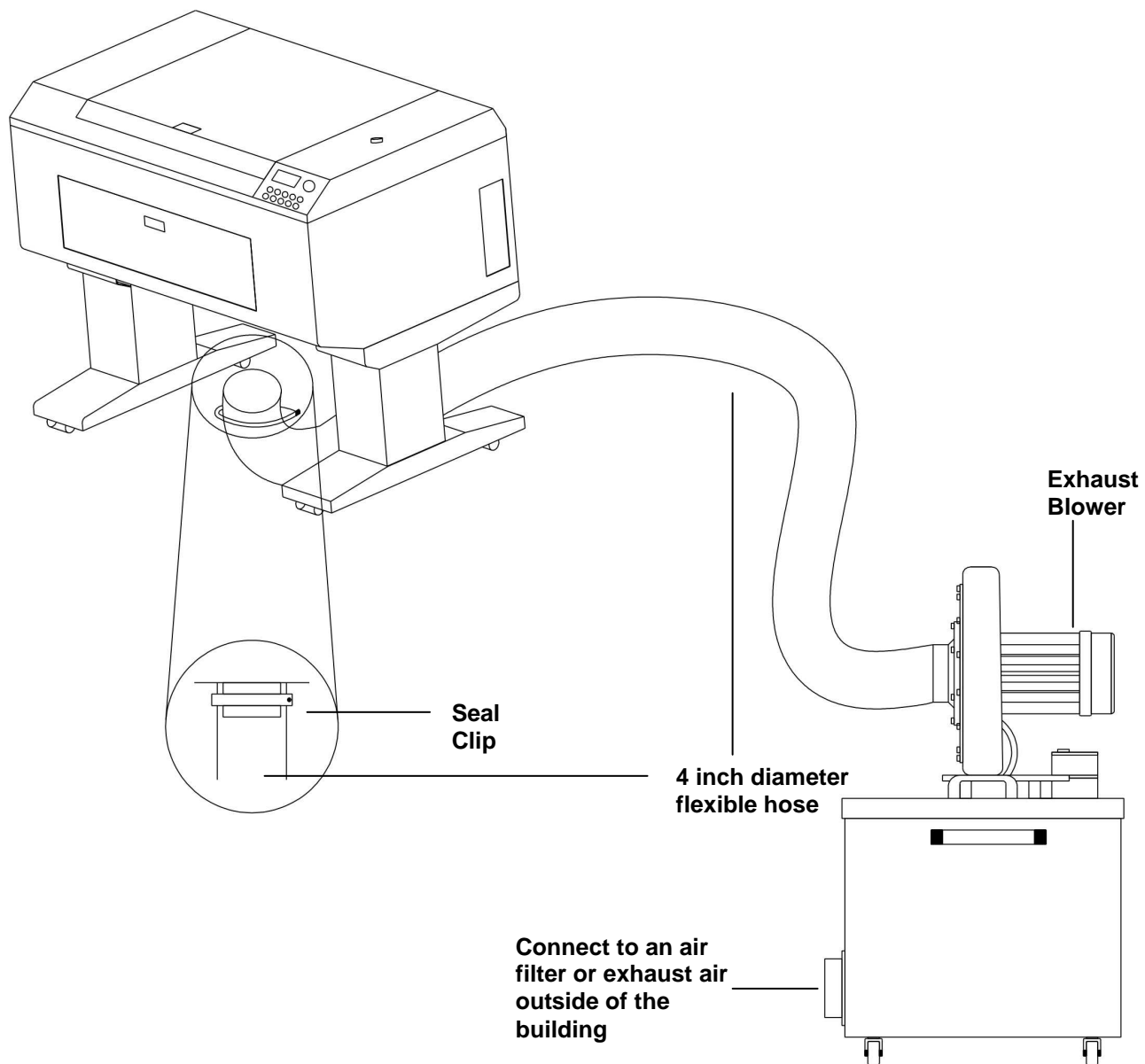
3.3 USB Transmission

Connect USB cable to the engraver (USB port) then to the serial port of the host computer.

3.4 Exhaust Ventilation

There are two exhaust ports on the New Merucry that can be used to connect to the odor reduction unit.

- (i) Exhaust port from beneath the machine



- (ii) Exhaust port from the rear of the machine



Chapter IV - SOFTWARE INSTALLATION

4.1 Install LaserPro New Mercury driver to PC. Please follow the procedure below:

1. Choose **Settings** and click **Printers**
2. Double click **Add printer** and start **Add printer wizard**. Then **Next step**.
3. Choose **Local** and click **Next step**
4. Choose **Have disk** and click **Next step**
5. Insert the **New Mercury Driver** disk properly into the floppy drive then click **OK**
6. Choose the port where your laser system is connected and click **Next step**
7. Name your system or bypass
8. Choose the driver to be default printer
9. Select **No** when asked to print a test page and click **Finish**

Now the LaserPro New Mercury printer driver is installed completely. Don't forget to take the GCC driver disk from the floppy drive and store in a safe place.



NOTE

Window Vista USB Driver installation: The main purpose is to install USB Driver correctly under Window Vista

OS	Vista
USB Driver Version	USB Setup1.12_01
Firmware Version	1.22_AAS

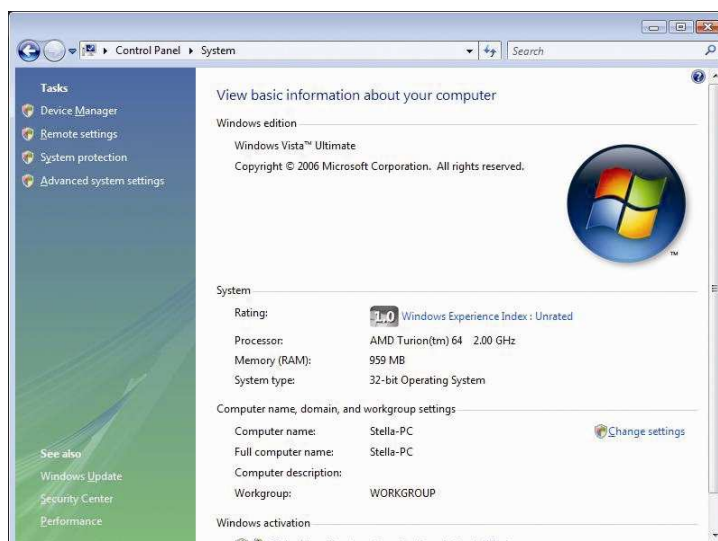
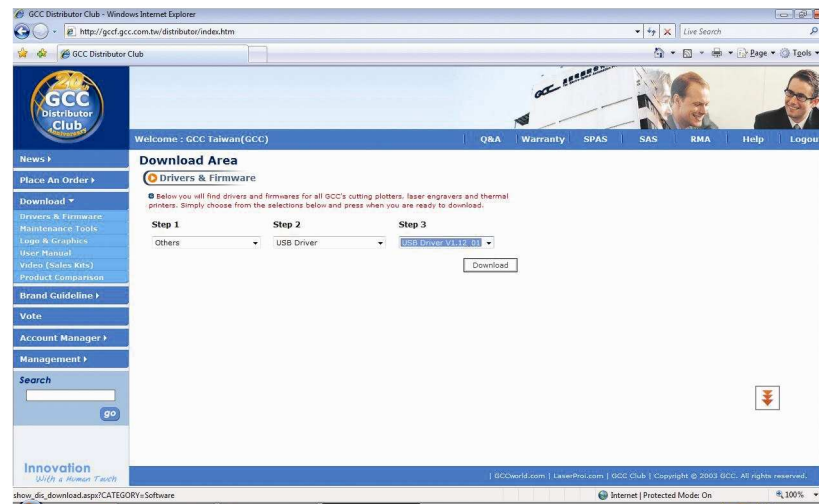


Fig: Vista Operation System



Installation process:

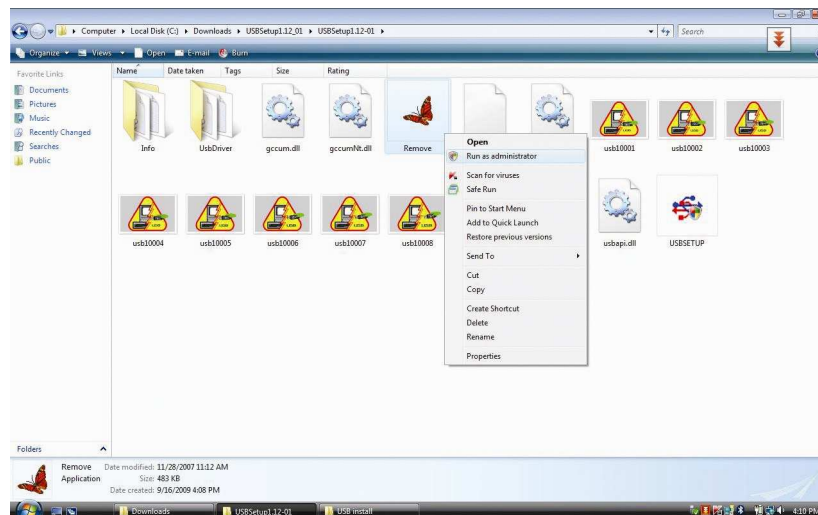
< Step1> Go to GCC Distributor Club and download the latest USB driver.

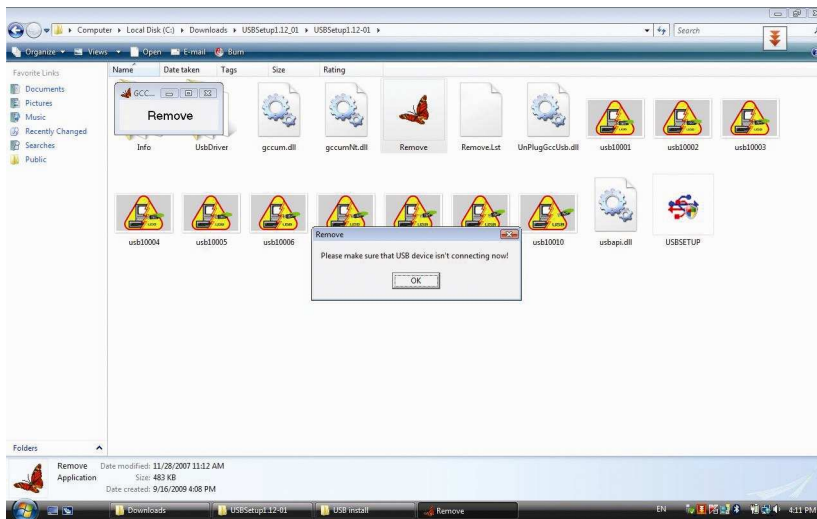


<Step 2>

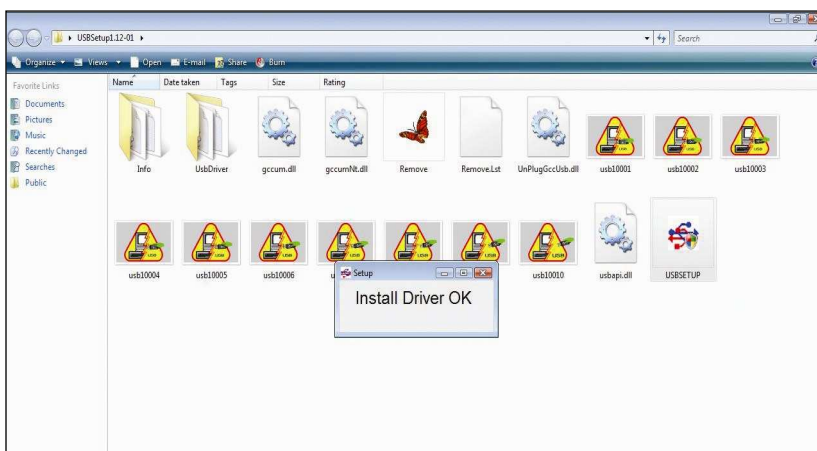
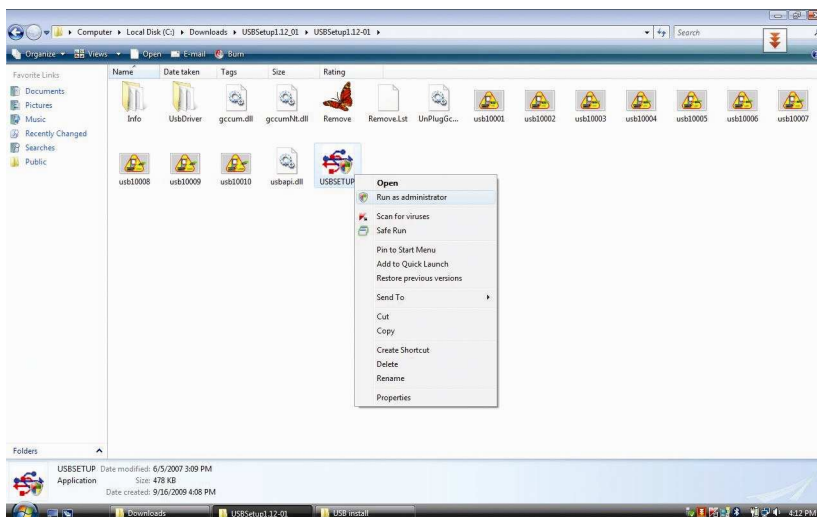
Please do the following steps to install the USB driver.

1. Run the remove.exe (right mouse click and click "Run as Administrator") to make sure that we remove any previous of the USB driver

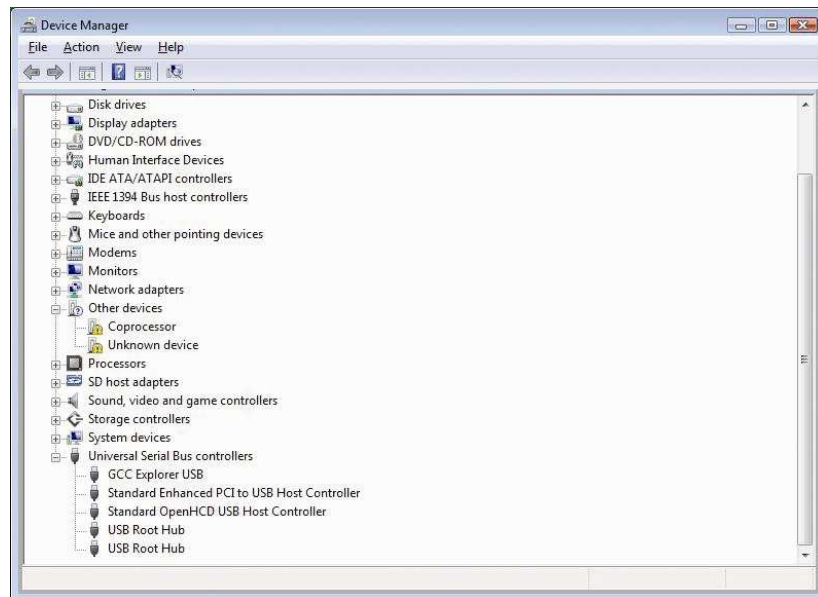




2. Run the "USBSETUP.EXE" file (right click and click "Run as Administrator")



3. Double check if the GCC USB driver has been installed correctly by going to the "Device Manager" and locate the "Universal Serial Bus Controllers"



- Attention: Remove previous installations if any. (Right click on previous installations and select remove driver, then unplug and plug USB cable from laser engraver again.)

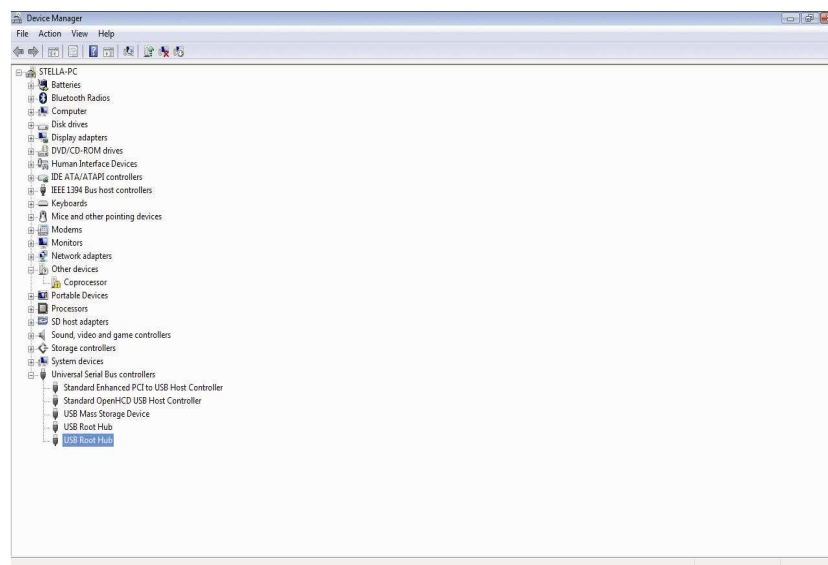


Fig: If the USB Print Support has been installed on the computer, it will be shown on the above screen.

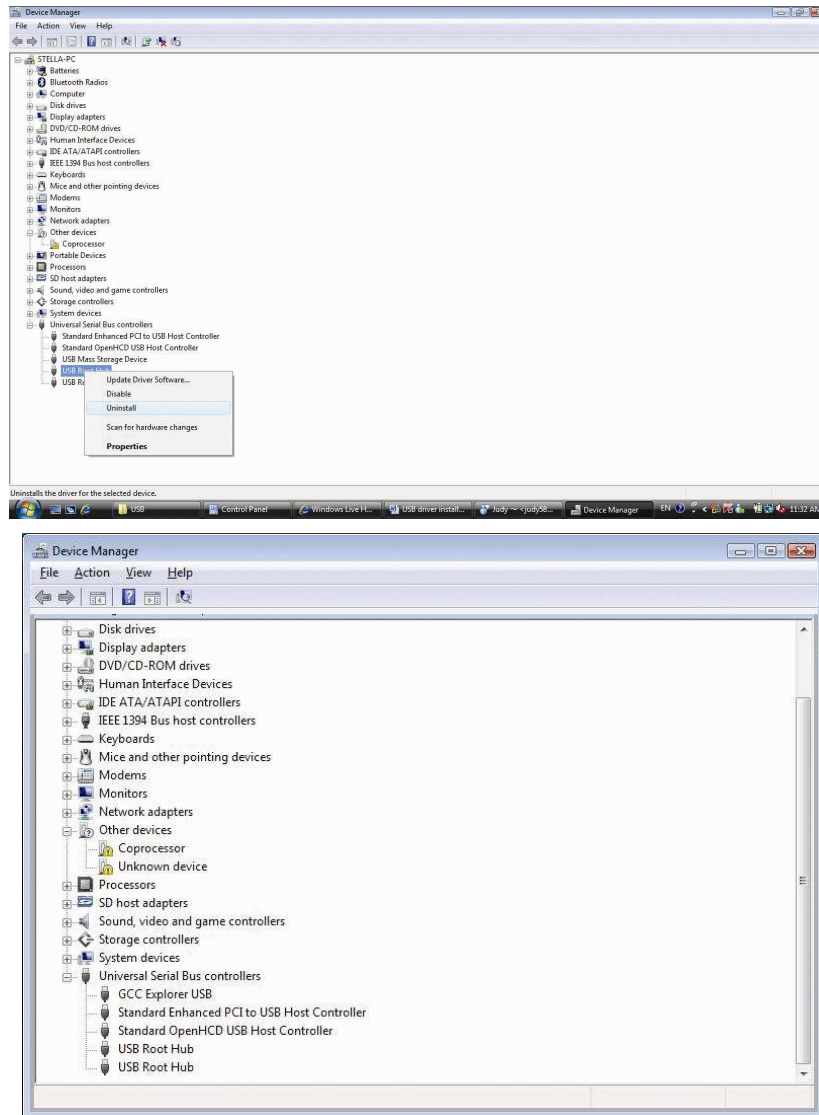


Fig: Unplug and reconnect the USB cable and the “GCC USB Driver” icon will be shown.



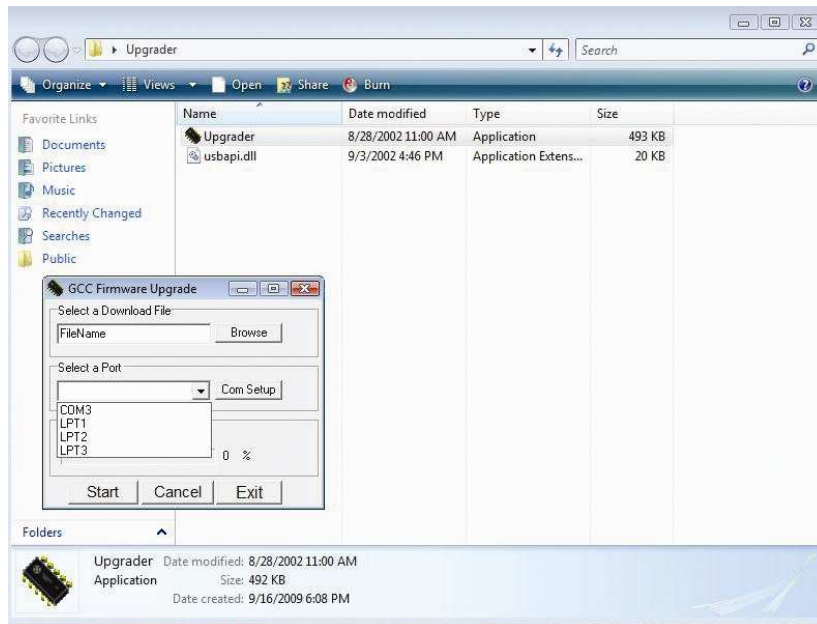
Installation of “Upgrader.exe” under Win Vista

Even if the GCC USB has been installed correctly, it will still not be worked correctly when you are not logged in as an administrator to run “upgrader.exe” file.



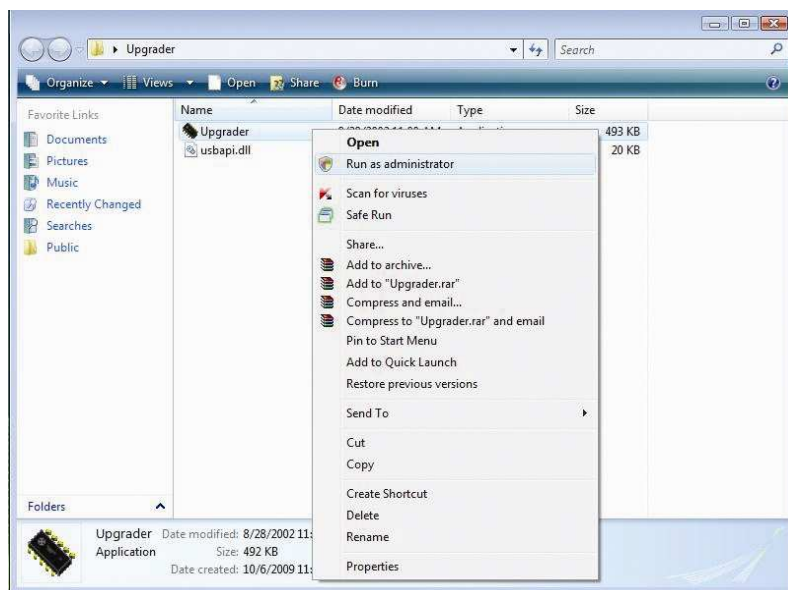
Example 1:

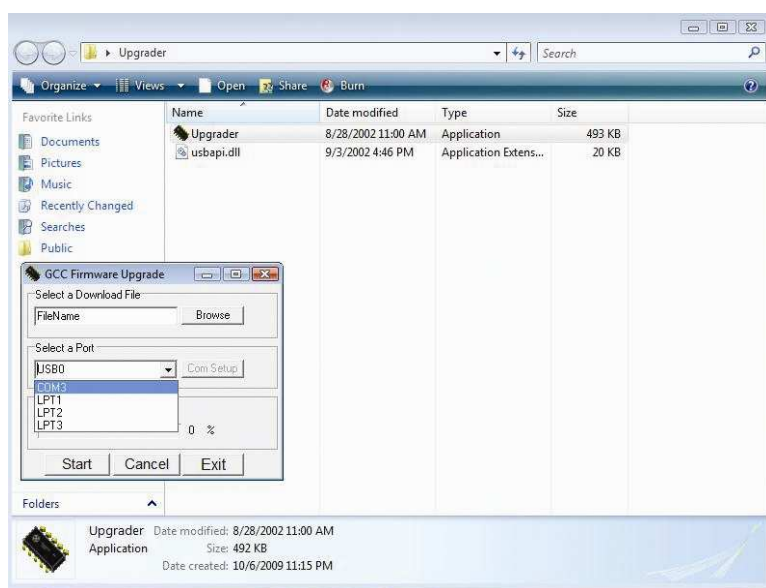
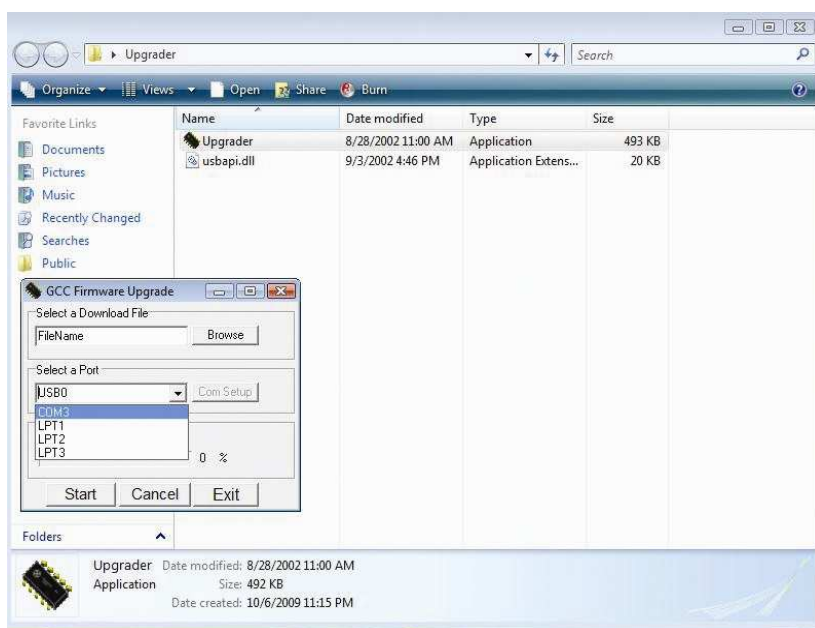
If we run the "Upgrader.exe" file, but did not use "Run as Administrator". The GCC USB driver port will not show up in the pull down menu of the Com Setup



Example 2:

Under the same situation as sample 1, right click on the "Upgrader.exe" and click "Run as Administrator", you can see GCC USB port on pull down list of Com Setup.





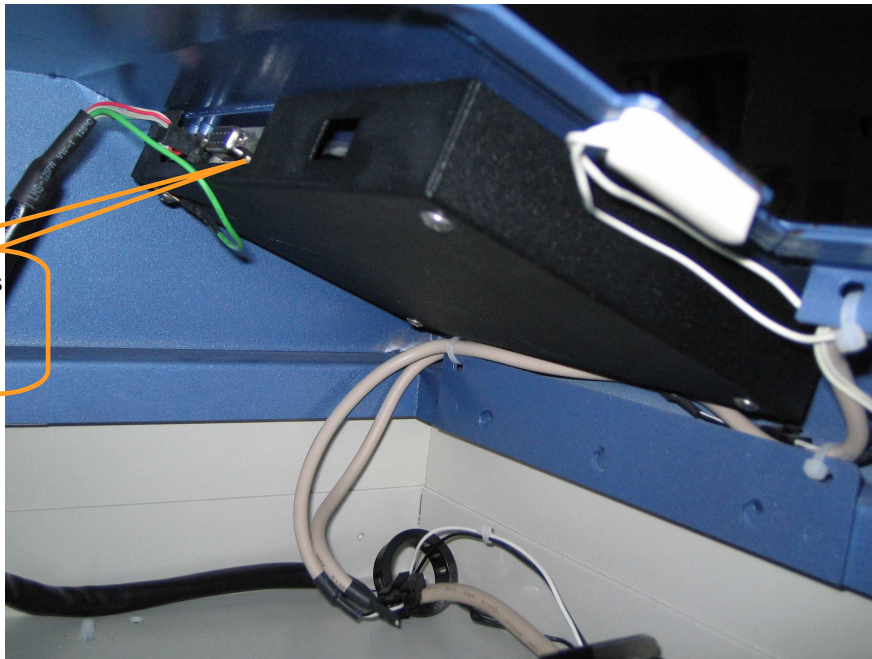
Chapter V - Operating the LaserPro New Mercury

Once you have installed the LaserPro USB Driver (USB connectivity only), LaserPro Print Driver, and have connected the LaserPro New Mercury to your computer, you will need to familiarize yourself with the LaserPro New Mercury's control panel and LaserPro Print Driver. The print driver will be where you spend most of your time configuring specific laser parameters for your jobs, while the control panel will allow you to set repeat times, manipulate the file order, perform auto / manual focusing, configure the start point, and more.

5.1 Using the Hardware

5.1.1 Adjusting the LCD Display Screen's Contrast Setting

Depending on the lighting of your immediate work area, you may need to adjust the contrast of LCD display screen. You may increase or decrease the contrast via the contrast adjustment wheel found on the inside of the right shoulder. You can access this area by opening the front door and looking inside to the right shoulder (as shown in the picture below).

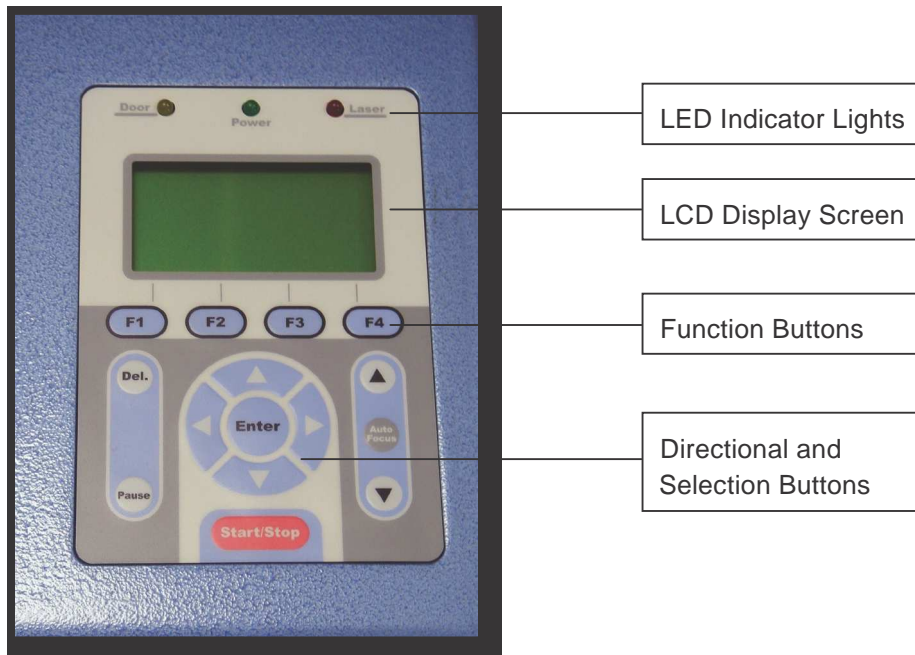


5.1.2 Graphic Control Panel Overview (Description)

The Control Panel

The control panel on the LaserPro New Mercury provides an easy access to all the manual controls needed for cutting and engraving. The liquid crystal display (LCD), functional, directional and selection buttons make navigating through the machine's manual controls easy to do.





LED Indicator Lights

Three indicator lights on the LaserPro New Mercury's control panel are part of the system's safety interlock system.

- **Door** - The door light will illuminate when either the top lid or external pass through doors on the LaserPro New Mercury are open or improperly closed.
- **Power** - The power light will illuminate when the LaserPro New Mercury is powered on.
- **Laser** - The laser light will illuminate when the laser is active and in operation.



WARNING

- DO NOT attempt to remove or modify any component of the safety interlock system.
- If at any time, any of the access doors are open and the "laser" LED is illuminated, unplug the laser system IMMEDIATELY and contact GCC technical support for service instructions.
- DO NOT operate the laser system if any component of the safety system is malfunctioning.

NOTE

There is an 8 second warm up period after the door LED is triggered for systems equipped with Synrad laser tubes. i.e. opening the top lid or the external pass through doors of the machine. Operator must wait for 8 seconds before the laser tube can begin to work.



Directional and Selection Buttons

Function (F1 / F2 / F3 / F4) – Four function buttons allow you to select various functions which will change depending on what section of the menu you are in. Each function button's corresponding task will be displayed right above its respective button on the LCD display screen. Please note that in certain menus, not every function button will always be mapped to a corresponding action. In these situations, that particular button will not have a function.

Directional (Δ / ∇ / \triangleleft / \triangleright) – Four directional buttons allow you to navigate the selection cursor through the control panel menu and adjust the value of specific settings. In general, the \triangleleft / \triangleright directional buttons cycle through the various selections, while the Δ / ∇ directional buttons adjust the value of that particular selection.

Enter – Confirms the current selection.

Start / Stop – Allows you to start or stop engraving jobs, once those jobs have been successfully loaded onto the system.

Delete – Provides quick access to delete the current job.

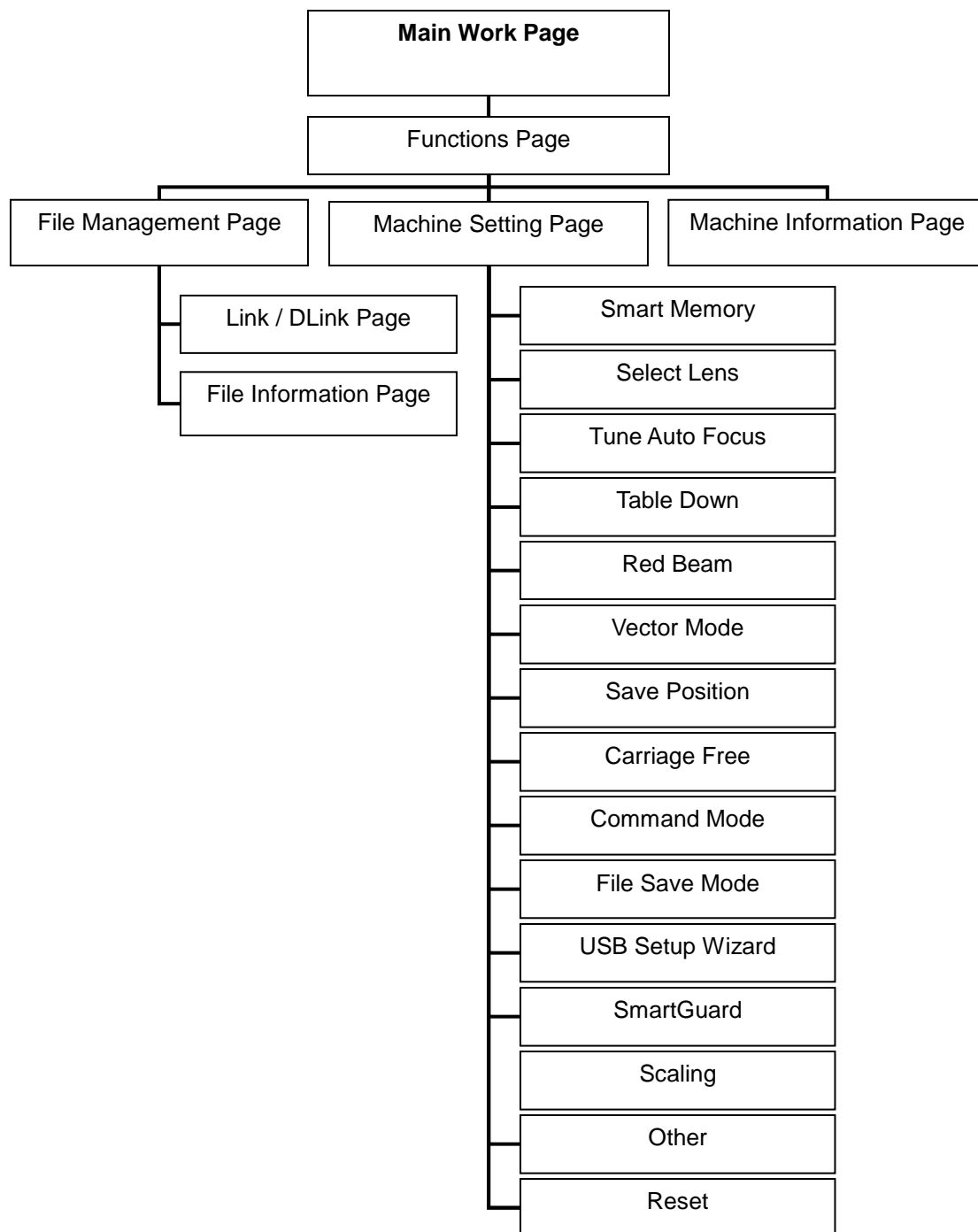
Pause – Pauses the current engraving process. Press again to resume the current process.

Auto Focus – After you have positioned your material and moved the laser carriage head to the area you want to engrave, press this button and the system will automatically adjust the optimal vertical focal distance for the laser.

Manual Focus (\blacktriangle / \blacktriangledown) – To manually adjust the vertical focal distance between the laser head and the material, you can use the \blacktriangle / \blacktriangledown buttons to do so. Doing so will adjust the vertical height (z-axis) of the worktable.



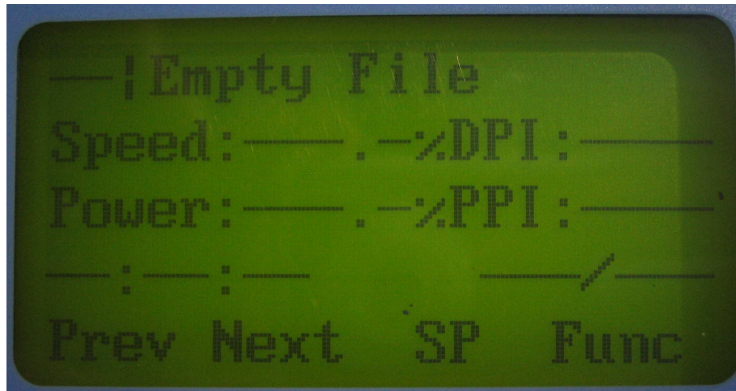
5.1.3 Graphic Control Panel Navigation Chart



5.1.4 Graphic Control Panel Function Pages

When the LaserPro New Mercury is powered on, the machine will perform a series of safety checks and initializing routines. The LCD display screen will display the GCC copyright, LaserPro logo, and machine initialization pages before going to the main work page.

Main Work Page



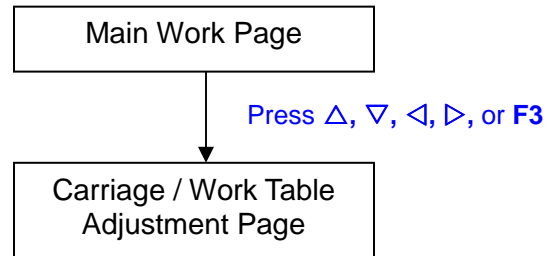
The main work page is the page that the LaserPro New Mercury will default to upon startup and will be the “home base” for when navigating through the various functions of the control panel. This will be the page that is displayed when you are processing your jobs. This page contains specific job information such as the current job's name, Speed, Power, PPI, DPI, processing / remaining times, and jobs loaded.

Main Work Page	
Relevant Buttons	Function
F1 (Prev)	Scroll through previous jobs
F2 (Next)	Scroll through next jobs
F3 (Z)	Go to Carriage / Work Table Adjustment Page
F4 (Func)	Go to Functions Page
△ / ▽ / ◀ / ▶ Directional	Go to Carriage / Work Table Adjustment Page
Start / Stop	Start / Stop the current job
Delete	Delete the current selected job
Cutting Mode	Set Acceleration





☼ **Navigating to this page:**



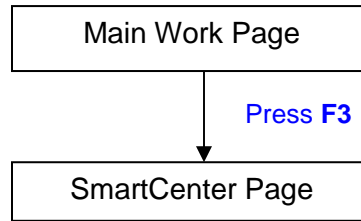
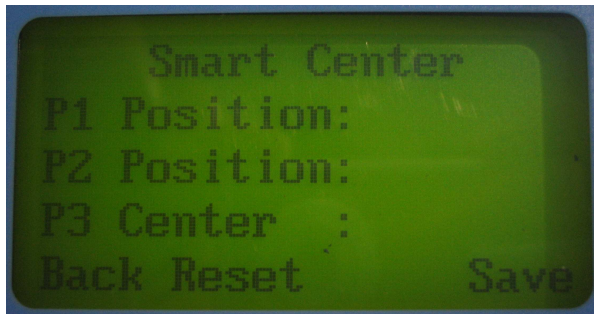
The Carriage / Work Table Adjustment Page allow you to manually increase and decrease the height of the work table (Z-axis). In addition, you can manually adjust the Y-axis and X-axis of the laser carriage.

Carriage / Work Table Adjustment Page	
Relevant Buttons	Function
F1 (Back)	Back to previous page
Δ / ∇ Directional	Manually adjust the Y-axis position of the laser carriage
◀ / ▶ Directional	Manually adjust the X-axis position of the laser carriage
Start / Stop	Back to Main Work Page



SmartCenter Page

☼ navigating to this page:



Under SmartCenter mode the job will be started after the system positions the pen carriage at the center position between two points indicated by the user. There are two ways to activate the SmartCenter mode, either through driver or direct from control panel.

Enter SmartCenter page and we can move the pen carriage by hand and press enter to save the positions indicated by the red pointer. After both points are set, the pen carriage will move to the Center of the two entered points and the job will begin.

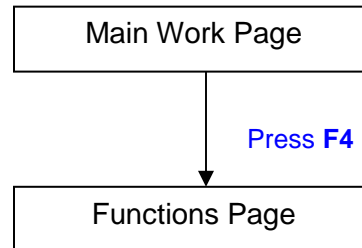
Carriage / Work Table Adjustment Page	
Relevant Buttons	Function
F1 (Back)	Back to previous page
F2 (Reset)	Reset all saved positions
F4 (Save)	Save current lens carriage position
△ / ▽ Directional	Manually adjust the Y-axis position of the laser carriage
◁ / ▷ Directional	Manually adjust the X-axis position of the laser carriage
Start / Stop	Back to Main Work Page
Auto Focus	Initiate the auto focus function
▲ / ▼ Manual Focus Buttons	Manually adjust the height of the work table (Z-axis)



Functions Page



☼ Navigating to this page:



The Functions Page allows you to edit file management and machine settings. From this page, you will be able to access the File Management, Machine Setting, and Machine Information pages.

- **File Management Page** – this page allows you to manage the files that you have loaded onto the LaserPro New Mercury.
- **Machine Setting Page** – this page allows you to access and modify various machine settings, including: Set Lens, Tune Auto Focus, Set Table Down, Set Red Beam, Carriage Lock, Set Command Mode, Save Position, Flash Memory, Set File Save Mode, Set Vector Mode, Tune Image Power, Set Laser Wattage, Set Fine Mode, Other, Reset.
- **Machine Information Page** – this page allows you to view information regarding the system such as the GCC logo, machine name, firmware version, and other information.

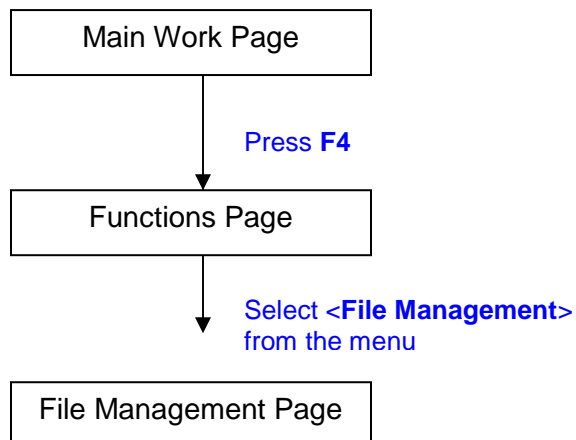
Functions Page	
Relevant Buttons	Function
F1 (Back)	Back to previous page
F3 (Help)	Display help
F4 (Recall)	Back to previous page
△ / ▽ Directional	Scroll through the menu selections
Enter	Perform the selection
Start / Stop	Back to Main Work Page



File Management Page



☀ Navigating to this page:

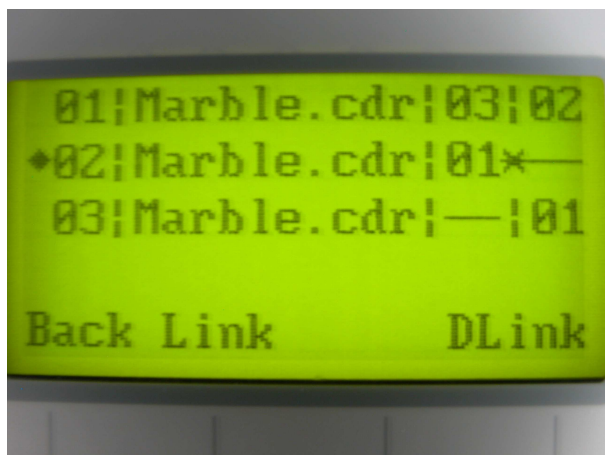


The File Management Page allows you to manage the files that you have loaded onto the LaserPro New Mercury. You can scroll through your jobs, delete a selected job, delete all jobs, and go to the Link/DLink Page to set and arrange multiple loaded jobs into a single job queue for processing.

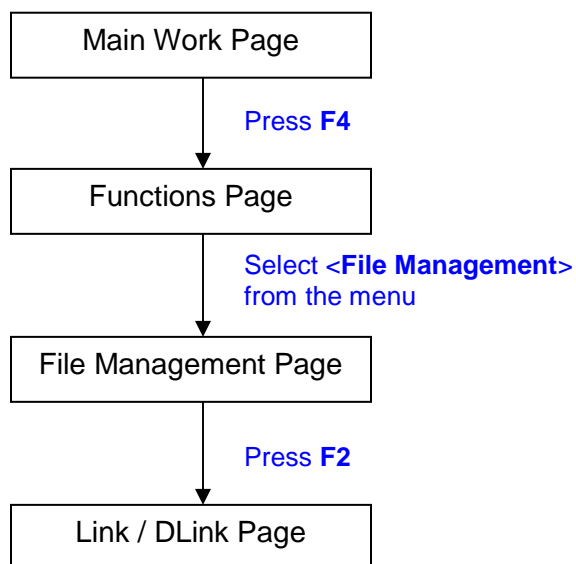
File Management Page	
Relevant Buttons	Function
F1 (Back)	Back to previous page
F2 (Link)	Go to the Link/DLink Page
F3 (D-All)	Delete all loaded jobs
F4 (Del)	Delete the selected job
△ / ▽ Directional	Scroll through your loaded jobs
Enter	Go to the File Information Page for the selected job
Start / Stop	Go to the Main Work Page for the selected job



Link/DLink Page



☀ Navigating to this page:



The Link/DLink Page allows you to set, arrange, and remove loaded jobs to and from a job queue for processing. Use the directional keys to cycle through your loaded jobs, then simply press the <F2 (Link)> key to add a file to the job queue. The job queue will be set in a sequential order based on the order you link the files. Press the <F4 (DLink)> key to remove a job from your job queue.

The first column field (before the file name) displays the job number. The sequence for your job queue is displayed in the two columns to the right of your file names. The first column to the right of your job file name displays the job number of the previous file in the job queue sequence. The second column after the file name displays that job's next file in the job queue sequence. First and last jobs in the job sequence you set will have a (---) in the first and second columns respectively. So according to the image above, the job queue sequence has been set to be processed in this order: 03:Marble.cdr → 01:Marble.cdr → 02:Marble.cdr.

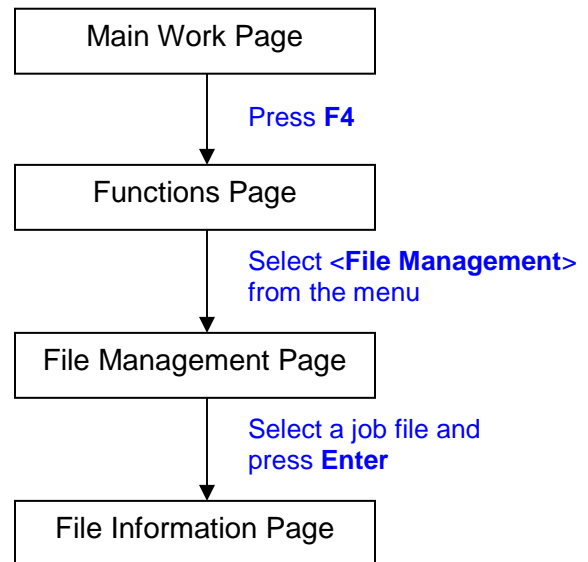
Link/DLink Page	
Relevant Buttons	Function
F1 (Back)	Back to previous page
F2 (Link)	Add the currently selected job to the job queue
F4 (DLink)	Remove the currently selected job from the job queue
△ / ▽ Directional	Scroll through your loaded jobs
Start / Stop	Back to Main Work Page



File Information Page



☀ Navigating to this page:



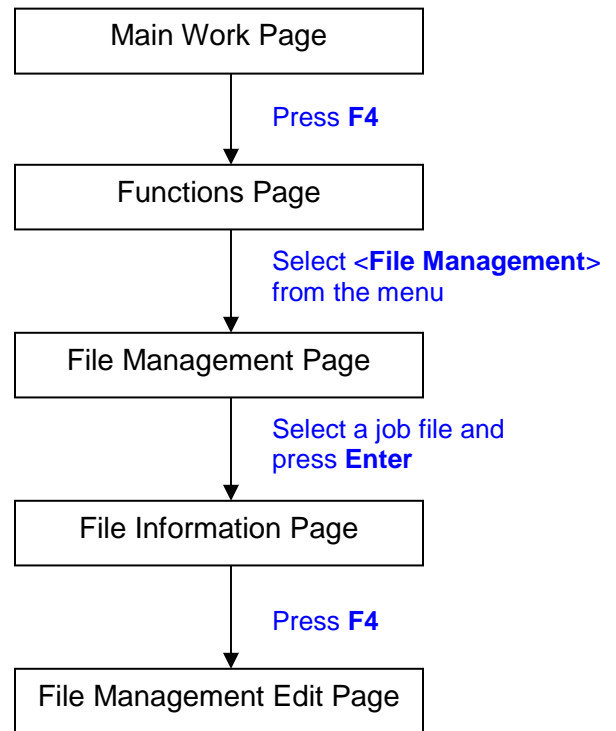
The File Information Page allows you to view the speed, power, DPI, and PPI settings of the selected job. In addition, you will be able to go to the File Management Edit Page from this menu to change raster / vector speed and power settings for the selected job.

File Information Page	
Relevant Buttons	Function
F1 (Back)	Back to previous page
F4 (Edit)	Go to the File Management Edit Page for the selected job
Start / Stop	Back to Main Work Page





⚙ **Navigating to this page:**



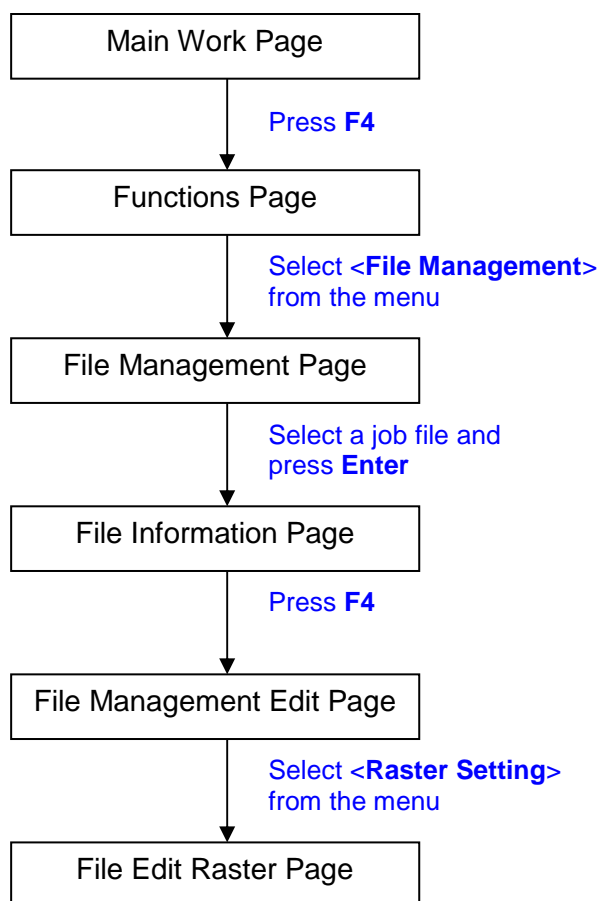
The File Management Edit Page allows you the choice to modify your raster or vector settings for the selected job, as well as setting the number of times to repeated the process of the job selected (Repeat Num).

File Management Edit Page	
Relevant Buttons	Function
F1 (Back)	Back to previous page
△ / ▽ Directional	Scroll through the menu selections
◀ / ▶ Directional	Cycle through the available selections
Enter	Perform the selection
Start / Stop	Back to Main Work Page





☀ Navigating to this page:

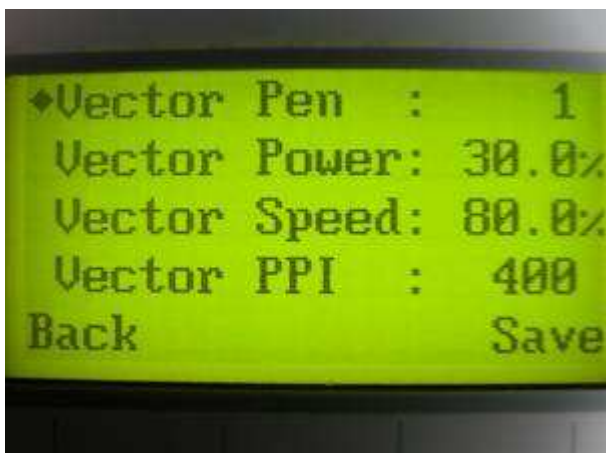


The File Edit Raster Page allows you to edit the raster power and speed settings, as well as enable or disable SmartACT for the selected job. These settings correspond to the same settings found on the LaserPro New Mercury print driver. This page allows you to easily adjust these values to make immediate adjustments while processing your loaded jobs, even when you have disconnected your computer from the LaserPro New Mercury

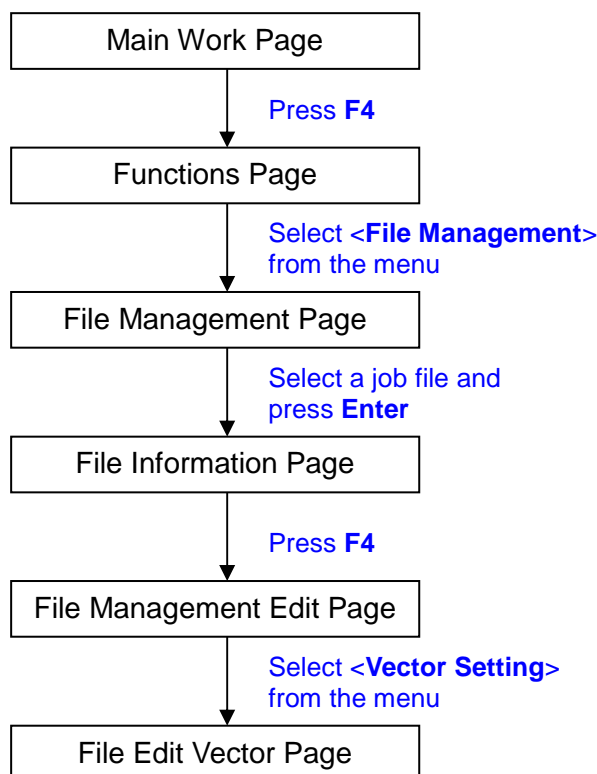
- Raster Power: 0.0% - 100%
- Raster Speed: 0.0% - 100%
- SmartACT: YES / NO

File Edit Raster Page	
Relevant Buttons	Function
F1 (Back)	Back to previous page
△ / ▽ Directional	Scroll through the menu selections
◁ / ▷ Directional	Adjust the value for that selection
Start / Stop	Back to Main Work Page





☀ Navigating to this page:



The File Edit Vector Page allows you to edit the vector pen, vector power, vector speed, and vector PPI, and power ramp settings for the selected job. These settings correspond to the same settings found on the LaserPro New Mercury print driver. This page allows you to easily adjust these values to make immediate adjustments while processing your loaded jobs, even when you have disconnected your computer from the LaserPro New Mercury.

- Vector Pen: 1 - 16
- Vector Power: 0.0% - 100%
- Vector Speed: 0.0% - 100%
- Vector PPI: 30 - 1524
- Power Ramp: YES / NO

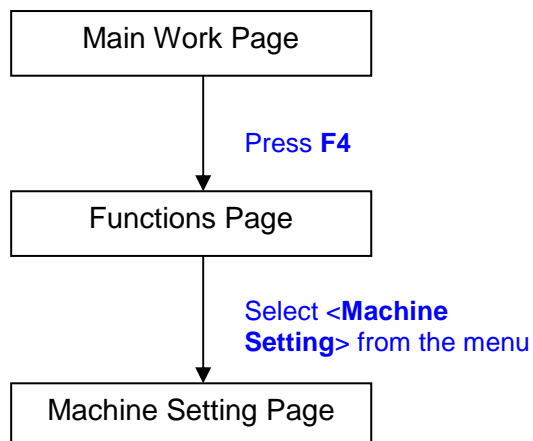
File Edit Vector Page	
Relevant Buttons	Function
F1 (Back)	Back to previous page
F4 (Save)	Save your current settings
△ / ▽ Directional	Scroll through the menu selections
◁ / ▷ Directional	Adjust the value for that selection
Start / Stop	Back to Main Work Page



Machine Setting Page



☀ Navigating to this page:

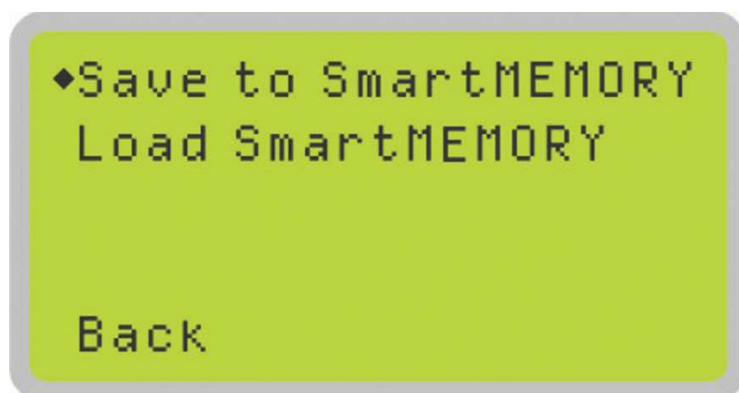


The Machine Setting Page allows you to access and modify a variety of your machine settings, including: SmartMemory, Select Lens, Tune Auto Focus, Set Table Down, Set Red Beam, Vector Mode, Save Position, Carriage Lock, Set Command Mode, Set File Save Mode, USB Setup Wizard, SmartGuard, Scaling, Other, Reset.

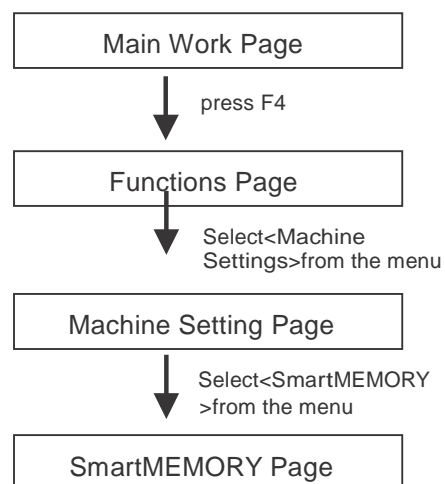
Machine Setting Page	
Relevant Buttons	Function
F1 (Back)	Back to previous page
△ / ▽ Directional	Scroll through the menu selections
Enter	Perform the selection
Start / Stop	Back to Main Work Page
Auto Focus	Initiate the auto focus function
▲ / ▼ Manual Focus Buttons	Manually adjust the height of the work table (Z-axis)



SmartMEMORY Page



i Navigating to this page:



The SmartMEMORY Page allows you to read and write data with the optional SmartMEMORY module installed. Selecting <Save to SmartMEMORY> will copy all current jobs on the LaserPro New Mercury to the SmartMEMORY module. Selecting <Load SmartMEMORY> will copy all job files from the SmartMEMORY module to the LaserPro New Mercury.

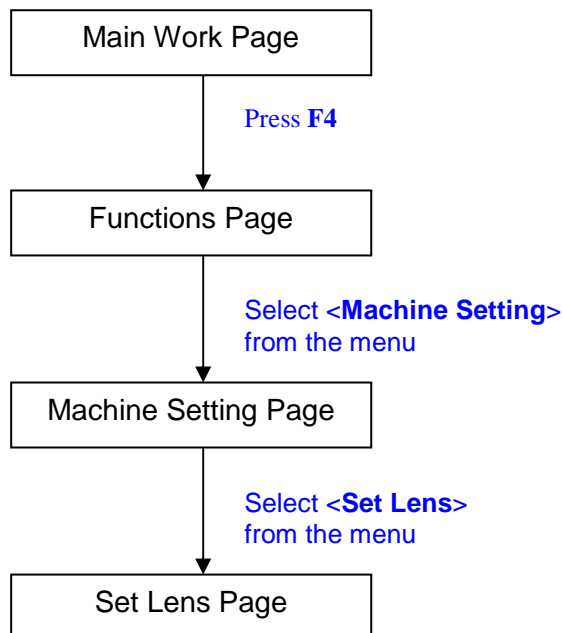
SmartMEMORY Page	
Relevant Buttons	Function
F1 (Back)	Back to previous page
◀/▶ Directional	Scroll through the menu selections
Enter	Perform the selection
Start / Stop	Back to Main Work Page
Auto Focus	Initiate the auto focus function
▲ / ▼ Manual Focus Buttons	Manually adjust the height of the work table (Z-axis)



Set Lens Page



☀ Navigating to this page:



The Select Lens Page allows you to modify the lens setting after you have changed to a different focal lens. Remember to save your settings after you have made the proper changes. Now by pressing the Auto Focus button, the LaserPro New Mercury will auto focus properly using the new lens. The LaserPro New Mercury's default setting is <2.0">

- Lens: 1.5" / 2.0" / 2.5" / 4.0"

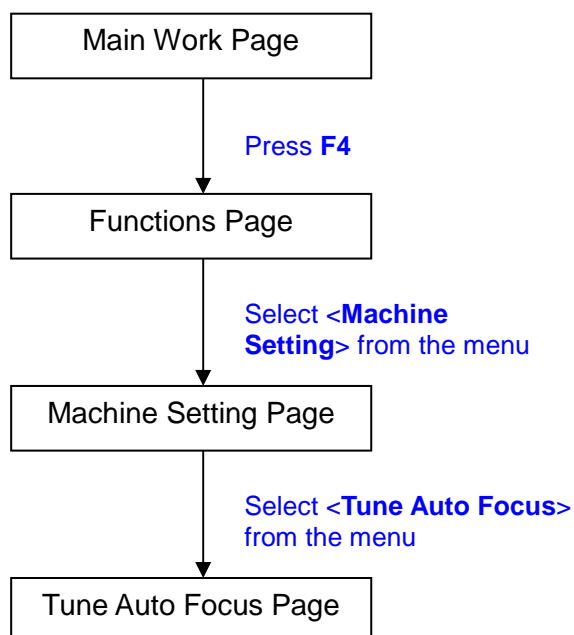
Set Lens Page	
Relevant Buttons	Function
F1 (Back)	Back to previous page
F4 (Save)	Save your current settings
◀ / ▶ Directional	Cycle through selections
Start / Stop	Back to Main Work Page
Auto Focus	Initiate the auto focus function
▲ / ▼ Manual Focus Buttons	Manually adjust the height of the work table (Z-axis)



Tune Auto Focus Page



☀ Navigating to this page:



The Tune Auto Focus Page allows you to manually set the default auto focus distance / vertical height of the worktable (Z-axis) for when the Auto Focus button is pushed.

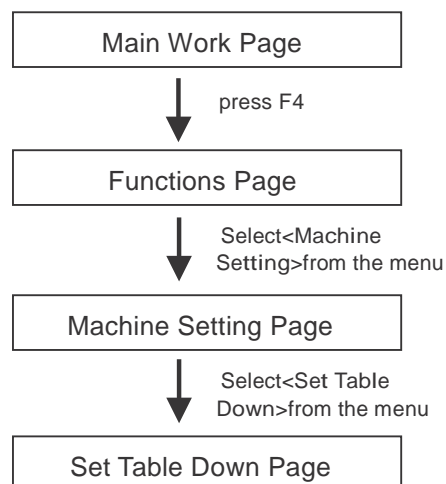
Tune Auto Focus Page	
Relevant Buttons	Function
F1 (Back)	Back to previous page
F4 (Save)	Save your current settings
△ / ▽ Directional	Manually adjust the height of the work table (Z-axis)
Start / Stop	Back to Main Work Page
Auto Focus	Initiate the auto focus function
▲ / ▼ Manual Focus Buttons	Manually adjust the height of the work table (Z-axis)



Set Table Down Page



i Navigating to this page:



The Set Table Down Page allows you to select whether or not the LaserPro New Mercury displays a warning prompt at startup. If the Table Down selection is set to <YES>, the LaserPro New Mercury will display a warning prompt: at startup, stating: "Table will move down and remove objects on table". Pressing the Enter key at this point will confirm the prompt to move the work table to its lowest position. If the Table Down is set to <NO>, then the LaserPro New Mercury will not display this warning prompt at system startup.

- Table Down: YES / NO
- Distance: 0 - 165 mm

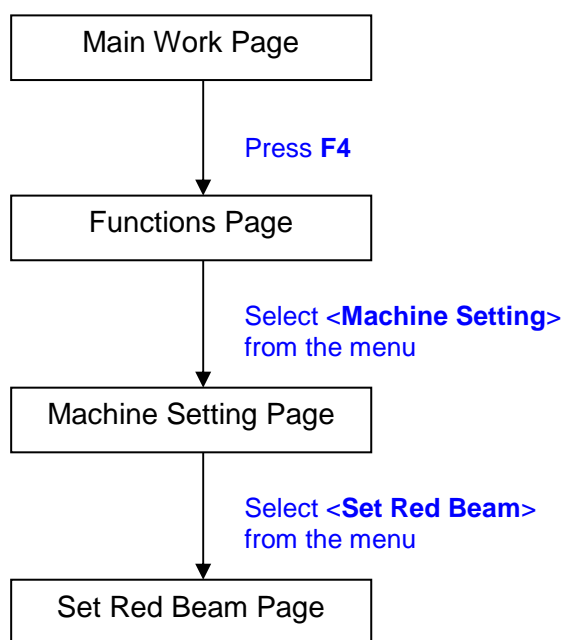
Set Table Down Page	
Relevant Buttons	Function
F1 (Back)	Back to previous page
F4 (Save)	Save your current settings
/ Directional	Scroll through the menu selections
/ Directional	Adjust the value for that selection
Start / Stop	Back to Main Work Page
Auto Focus	Initiate the auto focus function
▲ / ▼ Manual Focus Buttons	Manually adjust the height of the work table (Z-axis)



Set Red Beam Page



☀ Navigating to this page:



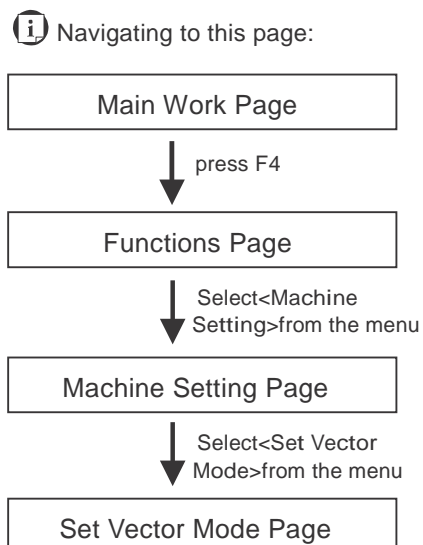
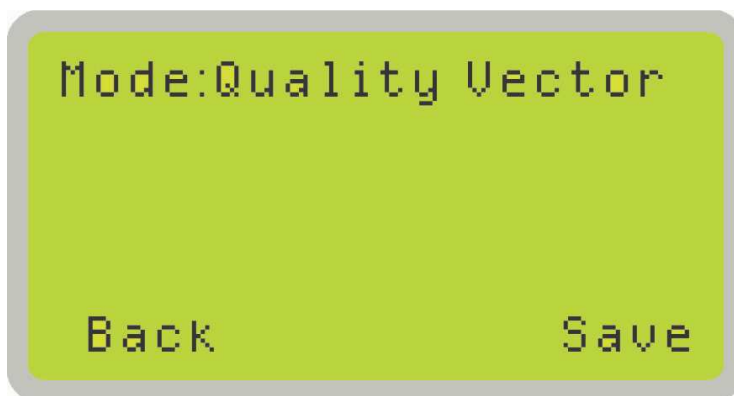
The Set Beam Page allows you to turn on or off the red dot laser pointer on the laser carriage. Enabling this function will indicate the exact area the engraving laser will fire upon.

- Red Beam YES / NO

Set Red Beam Page	
Relevant Buttons	Function
F1 (Back)	Back to previous page
F4 (Save)	Save your current settings
◀ / ▶ Directional	Cycle Red Beam between YES / NO
Start / Stop	Back to Main Work Page
Auto Focus	Initiate the auto focus function
▲ / ▼ Manual Focus Buttons	Manually adjust the height of the work table (Z-axis)



Set Vector Mode Page



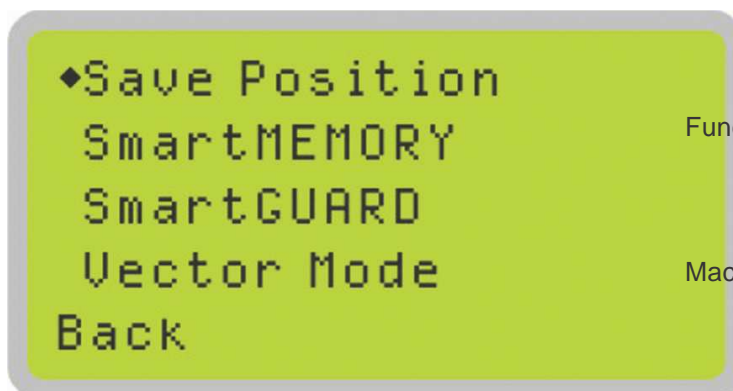
The Set Vector Mode Page allows you to adjust and balance vector mode's quality and speed settings based on your specific job. Speedy Vector Mode offers the highest output speed, sacrificing quality. Whereas Quality Vector Mode offers the highest quality, sacrificing output speed. Keep in mind that speed and quality are usually at a tradeoff. The system's default is Fine Vector mode, sacrificing some speed for higher quality. The LaserPro New Mercury's default setting is <Fine Vector>.

- Modes: Quality Vector, Fine Vector, Coarse Vector, Speedy Vector
[Slower speeds / higher quality ----- Faster speeds / lower quality]

Set Vector Mode Page	
Relevant Buttons	Function
F1 (Back)	Back to previous page
F4 (Save)	Save your current settings
◁ / ▷ Directional	Cycle Set Vector Mode between QUALITY VECTOR/ FINEVECTOR/ COARSE VECTOR/ SPEEDY VECTOR
Start / Stop	Back to Main Work Page
Auto Focus	Initiate the auto focus function
▲ / ▼ Manual Focus Buttons	Manually adjust the height of the work table (Z-axis)



Save Position Page



Navigation to this page:

Main Work Page

press F4

Functions Page

Select<Machine Setting>from the menu

Machine Setting Page

Select<Set File Save Mode>from the menu

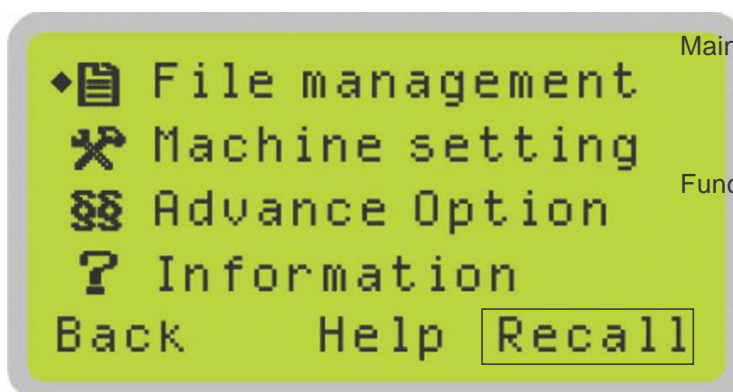
Set File Save Mode Page

The Save Position Function allows you to save the current X-axis and Y-axis positions of the laser carriage and sets this position to be the origin for subsequent jobs.



This is an excellent function to use when you are processing identical items or engraving relatively smaller objects positioned away from the default start position (top left) of the work table.

Recall Position



Navigation to this page:

Main Work Page

press F4

Functions Page

Select<Recall> by pressing F4

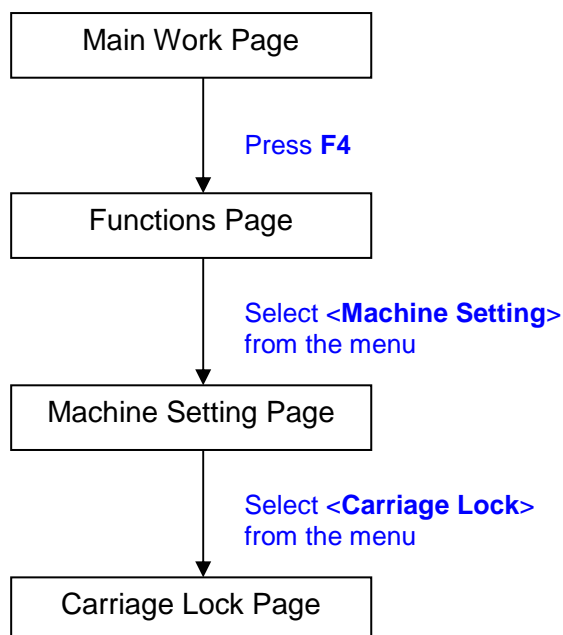
To recall the saved position, simply go to Functions page and press F4 again to recall the saved position. The laser carriage will be moved to the saved position.



Carriage Lock Page



☀ Navigating to this page:



The Carriage Lock Page allows you to set whether the laser carriage is locked or free. If the Carriage Free setting is set to <YES>, then you will be able to manually move the laser carriage along the X and Y axis by hand with the top door open. Whereas setting the Carriage Free to <NO> will lock the laser carriage, and movement or positioning can only be done by the control panel.

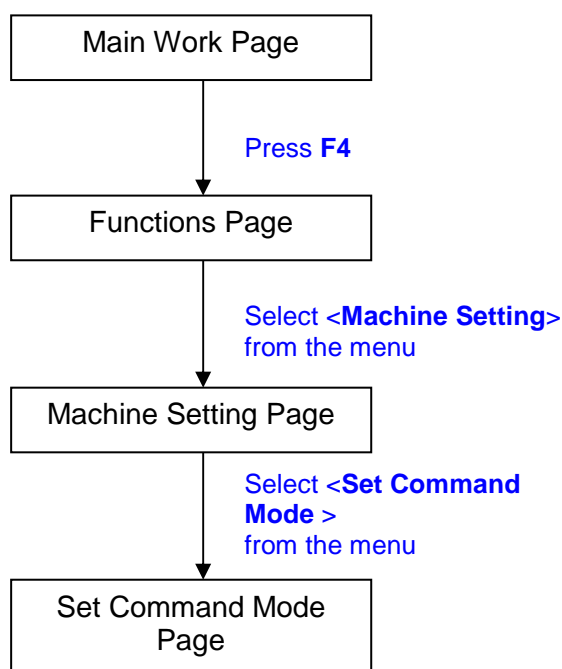
- Carriage Free YES / NO

Carriage Lock Page	
Relevant Buttons	Function
F1 (Back)	Back to previous page
F4 (Save)	Save your current settings
◀ / ▶ Directional	Cycle Carriage Free between YES / NO
Start / Stop	Back to Main Work Page



Set Command Mode Page

☼ Navigating to this page:



The Set Command Mode Page allows you to configure vector settings when outputting in Default or HPGL mode. Default mode is the standard Windows print driver recognized by the most popular graphic software programs, such as CorelDraw, Photoshop, Illustrator, etc. Whereas, HPGL mode is a less common output format generated from some RIP applications (signage industry). Regardless of which format you will be working with, both output formats are supported.

- Mode: Default / HPGL
- Vector Pen: 1 - 16
- Vector Speed: 0.0% - 100%
- Vector PPI: 0.0% - 100%
- Power Ramp: YES / NO

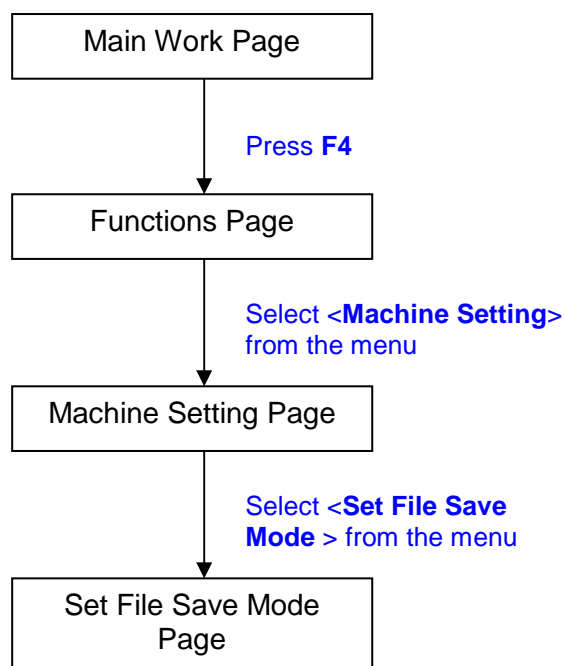
Set Command Mode Page	
Relevant Buttons	Function
F1 (Back)	Back to previous page
F4 (Save)	Save your current settings
△ / ▽ Directional	Scroll through the menu selections
◀ / ▶ Directional	Adjust the value for that selection
Start / Stop	Back to Main Work Page



File Save Mode Page



☀ Navigating to this page:



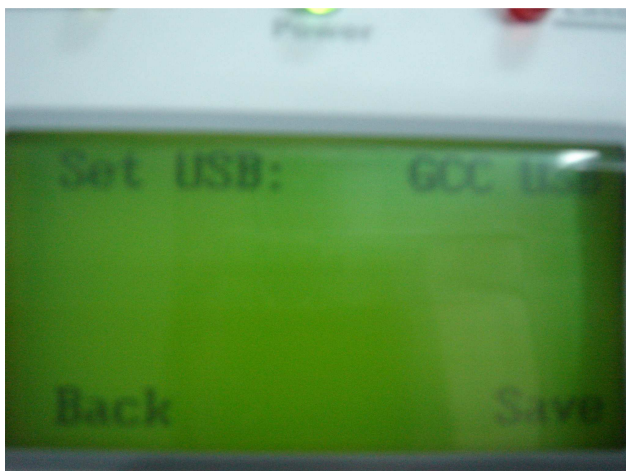
The File Save Mode Page allows you to set whether or not the LaserPro New Mercury automatically deletes each job file after processing. Setting File Save to <NO> will automatically and immediately delete each job file from the LaserPro New Mercury after the engraving or cutting process. Setting File Save to <YES> will retain all job files on the LaserPro New Mercury, even after each job has been processed.

- File Save: YES / NO

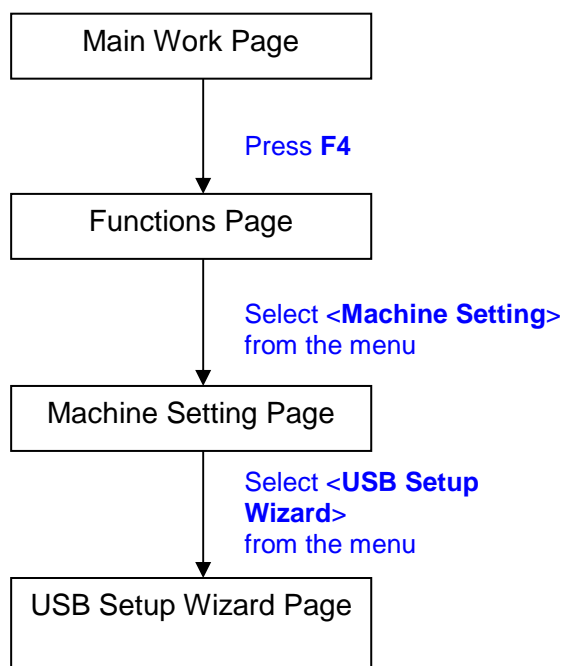
Set File Save Mode Page	
Relevant Buttons	Function
F1 (Back)	Back to previous page
F4 (Save)	Save your current settings
◀ / ▶ Directional	Cycle File Save between YES / NO
Start / Stop	Back to Main Work Page



USB Setup Wizard Page



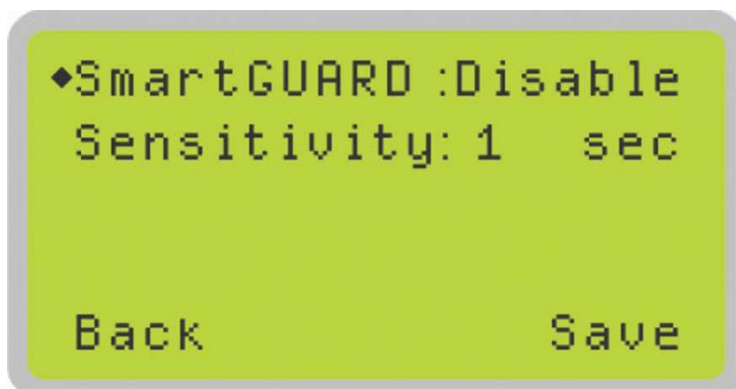
☀ Navigating to this page:



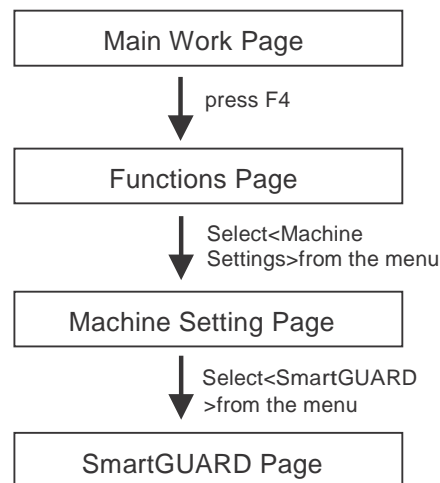
The USB Setup Wizard allows you to set the USB connection mode between GCC_mode and Common_mode.

USB Setup Wizard Page	
Relevant Buttons	Function
F1 (Back)	Back to previous page
F4 (Save)	Save your current settings
△ / ▽ Directional	Manually adjust the height of the work table (Z-axis)
Start / Stop	Back to Main Work Page
Auto Focus	Initiate the auto focus function
▲ / ▼ Manual Focus Buttons	Manually adjust the height of the work table (Z-axis)





i Navigating to this page:



After hardware installation, please enter the function menu on the control panel to enable the SmartGUARD fire alarm.

SmartGUARD Enable / Disable:

Press directional key (left or right) to enable the SmartGUARD device or disable it.

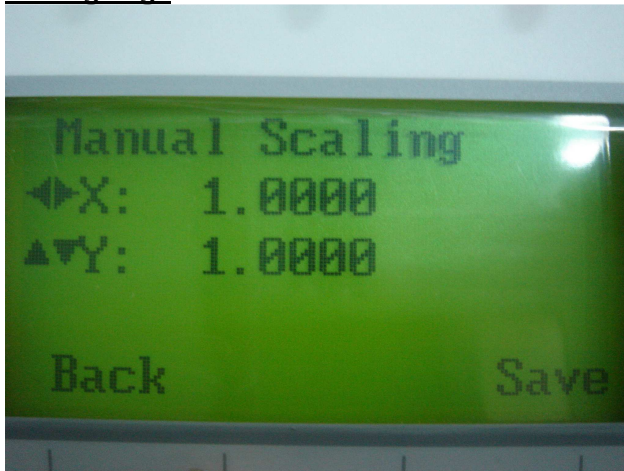
Sensitivity :

Press directional key (left or right) to set the sensitivity of SmartGUARD. There are five sensitivity settings (1, 3, 5, 7, 9 seconds) that can be selected. Sensitivity is defined by the delay time from when a fire is detected until the fire alarm alerts user, and automatically shuts down the system. For example, if the sensor delay switch is set to the 3 second position, the SmartGUARD will start an alarm and automatically shutdown the laser system after detecting a fire for 3 seconds.

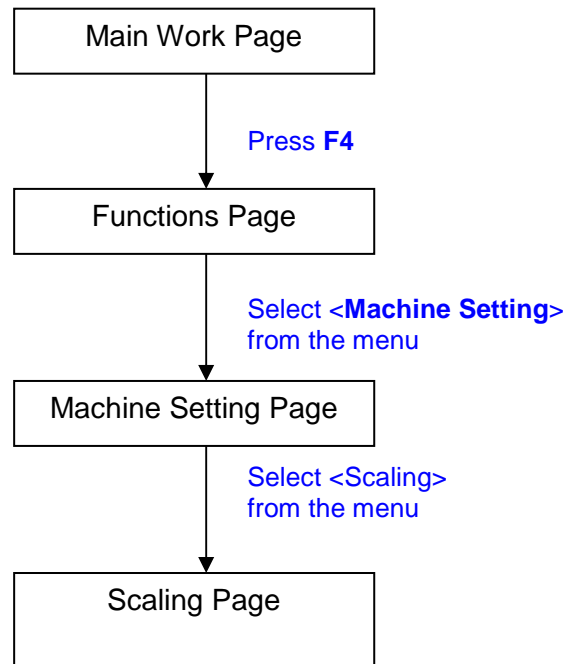
SmartGUARD Setting Page	
Relevant Buttons	Function
△ ▽	
F1 (Back)	Back to previous page
F4 (Save)	Save your current settings
/ Directional	Scroll through the menu selections
/ Directional	Adjust the value for that selection



Scaling Page



☀ Navigating to this page:

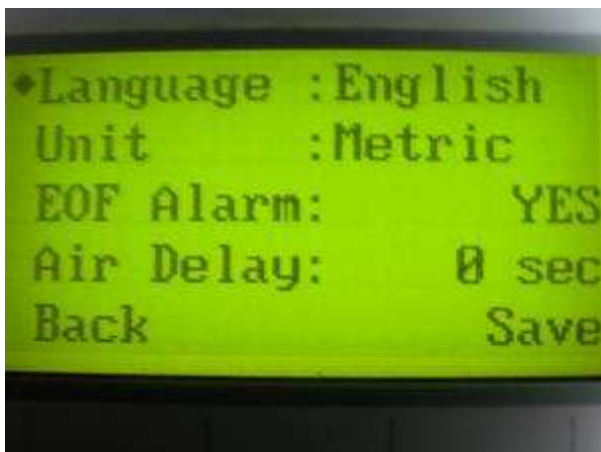


The Scaling page allows you to set the scaling factor of the machine.

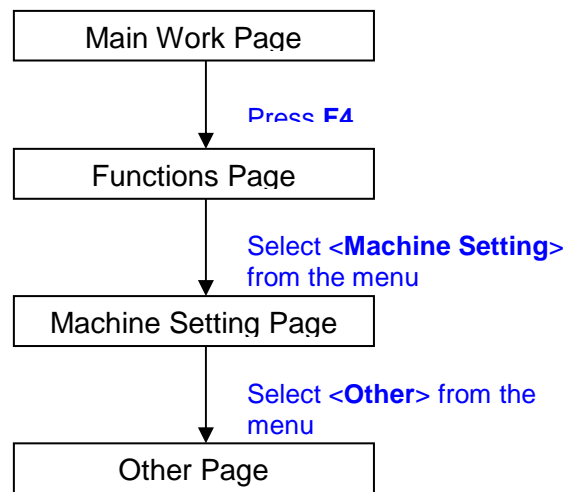
Scaling Page	
Relevant Buttons	Function
F1 (Back)	Back to previous page
F4 (Save)	Save your current settings
△ / ▽ Directional	Manually adjust the height of the work table (Z-axis)
Start / Stop	Back to Main Work Page
Auto Focus	Initiate the auto focus function
▲ / ▼ Manual Focus Buttons	Manually adjust the height of the work table (Z-axis)



Other Page



☀ Navigating to this page:



The Other Page allows you to change various settings that correspond to the control panel. The Language setting will allow users to change available languages displayed by the control panel. The Unit setting will allow you to change whether the units displayed by the control panel is in the metric or imperial system. The EOF (end of file) Alarm setting will enable or disable an audible notification when your jobs are complete. The Air Delay setting allows you to specify the delay in seconds of the SmartAIR air-assist after the point of laser firing.

- Language: ENGLISH (others dependent on Firmware)
- Unit: METRIC / ENGLISH
- EOF Alarm: YES / NO
- Air Delay: 1-100 seconds



TIP Depending on the material you are engraving with, your laser settings, and the desired results, please experiment with the air delay to achieve your desired results.

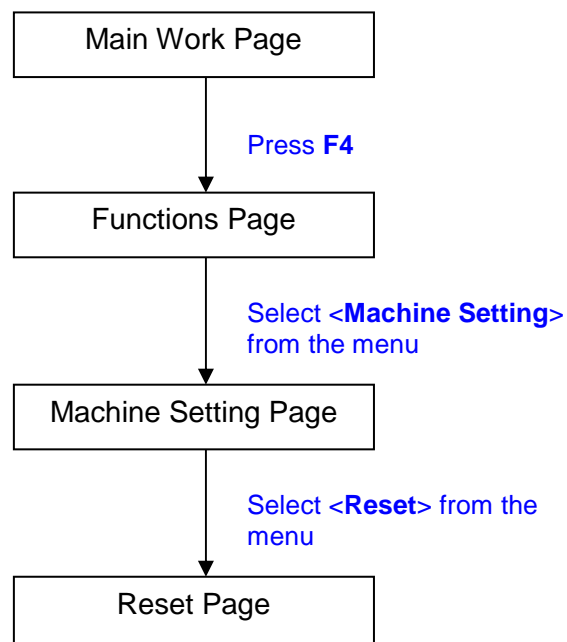
Other Page	
Relevant Buttons	Function
F1 (Back)	Back to previous page
F4 (Save)	Save your current settings
△ / ▽ Directional	Scroll through the menu selections
◀ / ▶ Directional	Adjust the value for that selection
Start / Stop	Back to Main Work Page



Reset Page



☀ Navigating to this page:



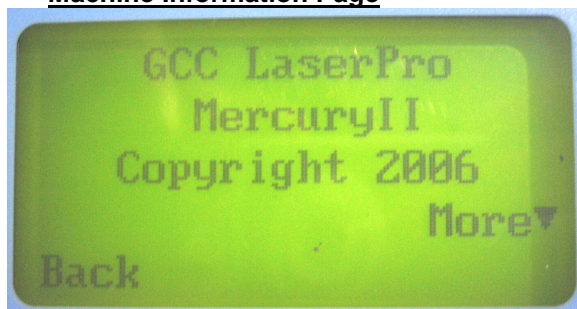
The Reset Page allows you to reset all changes made to the LaserPro New Mercury's Machine Settings Page to their default settings. This does not affect the settings saved to an image file on the computer. The User Reset setting will set all settings back to the default. After any firmware updates, you must use the System Reset setting (your previous settings are saved).

- User Reset (will pop up a confirmation, press Enter to confirm and continue)
- System Reset (will pop up a confirmation, press Enter to confirm and continue)

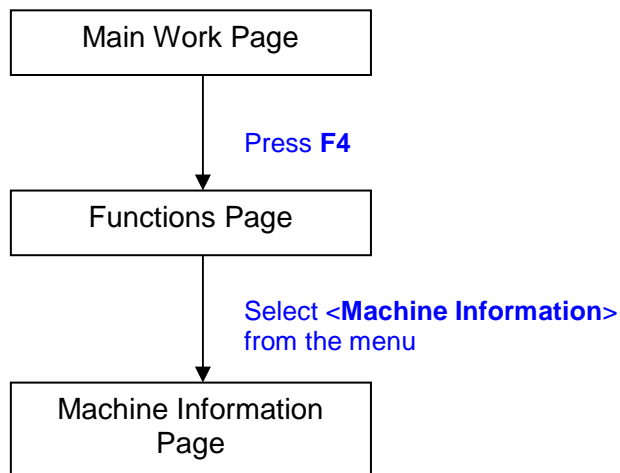
Reset Page	
Relevant Buttons	Function
F1 (Back)	Back to previous page
△ / ▽ Directional	Scroll through the menu selections
Enter	Perform the selection
Start / Stop	Back to Main Work Page



Machine Information Page



☀ Navigating to this page:



The Machine Information Page allows you to view information regarding the system such as the GCC logo, machine name, firmware version, and other information.

Machine Information Page	
Relevant Buttons	Function
F1 (Back)	Back to previous page
△ / ▽ Directional	Scroll through pages
Start / Stop	Back to Main Work Page



5.2 The LaserPro New Mercury Print Driver

With the LaserPro New Mercury print driver successfully installed, you will need to adjust the printer and page size default settings before you can begin editing and completing jobs. By doing so, you will be setting the work area in your graphics software to match the LaserPro New Mercury's worktable area.

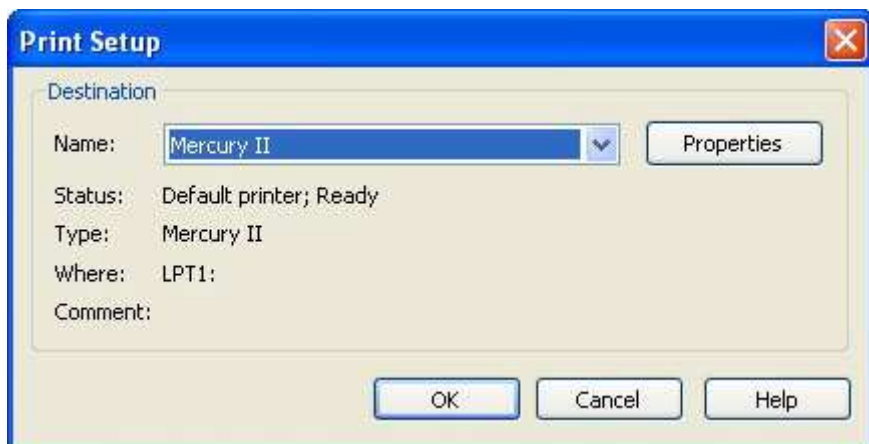
NOTE

Please make sure New Mercury is set to the default printer before proceeding to the page and layout setup.

- Ensure that the LaserPro New Mercury has been selected as the DEFAULT PRINTER. You can do so by going into your Windows Control Panel → Printers and Faxes.

If LaserPro New Mercury is not selected as DEFAULT PRINTER, you may set it up through the graphics software as well. The following example takes Corel Draw to demonstrate how to set up LaserPro New Mercury as the Printer.

- 1) From the primary menu, click FILE → PRINT SETUP.
- 2) From the navigation bar Name, click Mercury II → OK



5.2.1 Page Setup and Orientation

The first thing you must do before working with the LaserPro New Mercury Print Driver will be to make sure the page and layout settings are properly configured within your graphics software. You will need to access and edit the Page Setup or Layout page of your graphics software to set your graphics software's page layout to match the LaserPro New Mercury's work table's dimensions and orientation.

From your graphic software's Page Setup page:

- Set the page orientation in the graphics software to Landscape mode.
- Set page size horizontal length to 635 mm (25 inches) and vertical height to 458 mm (18 inches).

Corel Draw Example (Page Setup and Orientation)

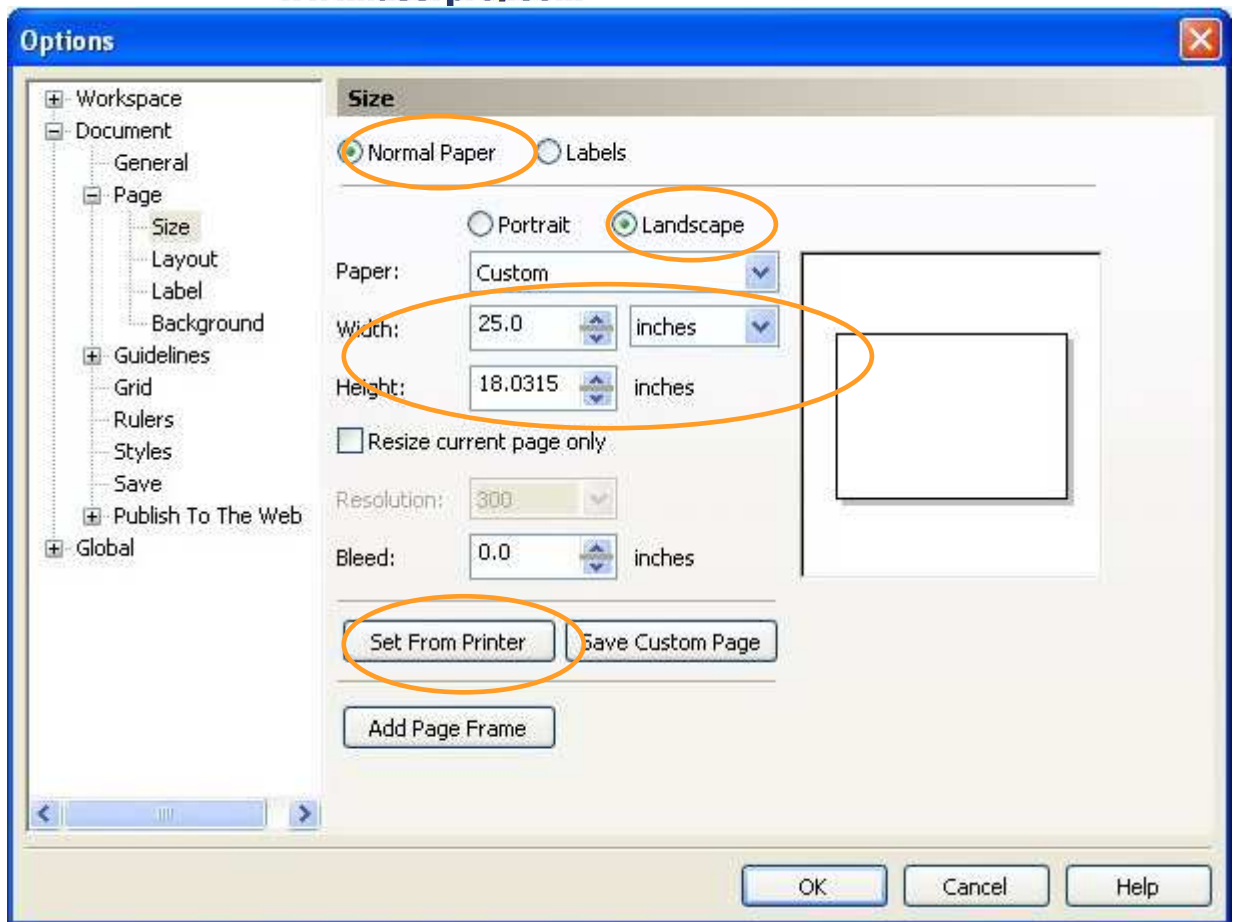
The following is an example of how to set the Page Setup and Orientation in the graphics software. CorelDraw is the designated graphics software used for this example. For other graphics software, you will need to access the corresponding Page Setup page.

- 1) From the primary menu, click LAYOUT → PAGE SETUP.
- 2) From the navigation bar on the left, click DOCUMENT → PAGE → SIZE.
- 3) Ensure that NORMAL PAPER and LANDSCAPE are selected.
- 4) Ensure the Paper Width and Height dimensions match the LaserPro New Mercury's work table dimensions of 635 mm (25 inches) and 458 mm (18 inches).
- 5) Click OK to complete the paper size adjustment.



Instead of manually selecting the Landscape and setting the Paper Width and Height, you can simply click the Set From Printer function and CorelDraw will automatically set the proper orientation and dimensions based on LaserPro New Mercury's work table. (You MUST have the New Mercury set as the default printer prior to doing this.)





5.2.2 Color Management

LaserPro driver uses pen color settings to control laser engraver's engraving and cutting parameters. In addition to having your Page Setup and Orientation properly set in your graphics software, you will also need to make sure Color Management is DISABLED prior to working with the LaserPro New Mercury Print Driver.

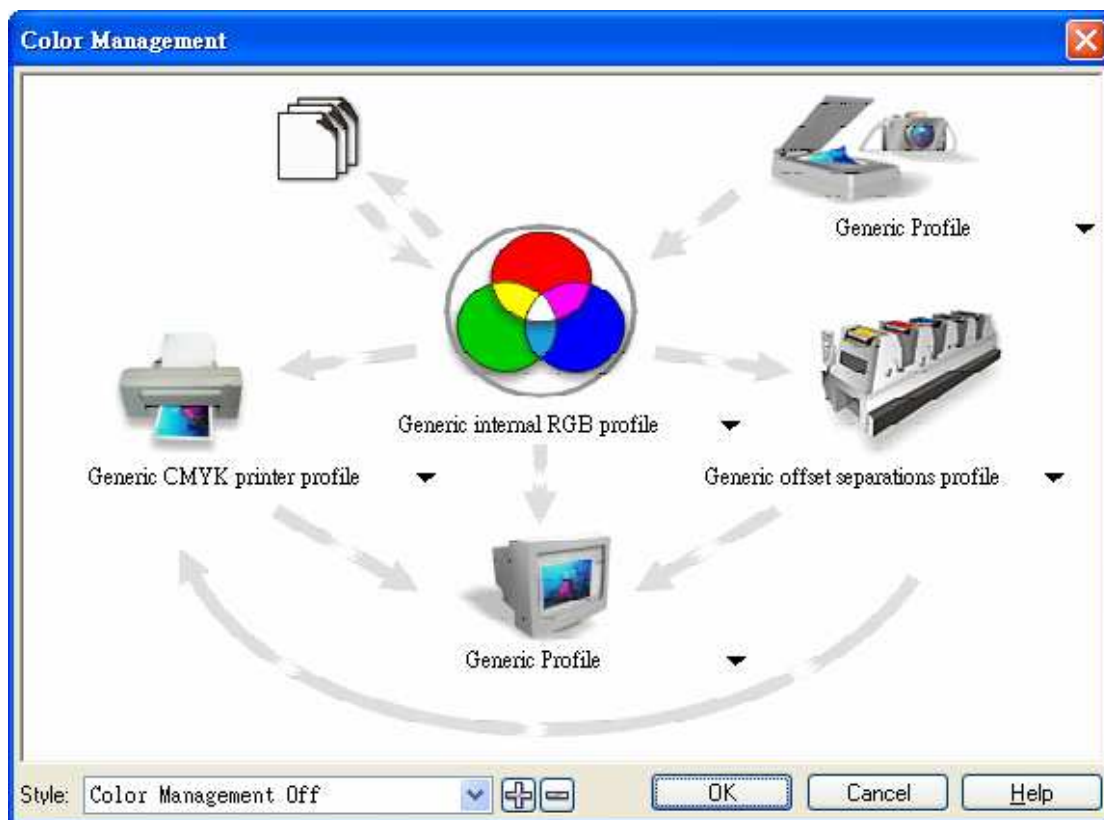
From your graphic software's Color Management page:

- Disable Color Management or set Color Management to Off.

Corel Draw Example (Color Management)

The following is an example of how to properly disable Color Management in the graphics software. CorelDraw is the designated graphics software used for this example. For other graphics software, you will need to access the corresponding Color Management page.

- 1) From the primary menu, click TOOLS → COLOR MANAGEMENT and CorelDraw's Color Management will appear.
- 2) Under the Style pull down menu, select COLOR MANAGEMENT OFF.
- 3) Click OK to complete the color management adjustments.



5.2.3 Using the LaserPro New Mercury Print Driver

Now after you have properly set the Page and Layout and Color Management of your graphics software, you are ready to configure the details of your actual job through the LaserPro New Mercury Print Driver. The LaserPro New Mercury print driver allows you to adjust your engraving / cutting options. After you have setup your image, design, or text to be engraved in your software application, you can access the LaserPro New Mercury print driver by going to FILE > PRINT > PROPERTIES.

The LaserPro New Mercury Print Driver consists of seven primary sections (pages) in which you will be able to choose various engraving / cutting options and settings:

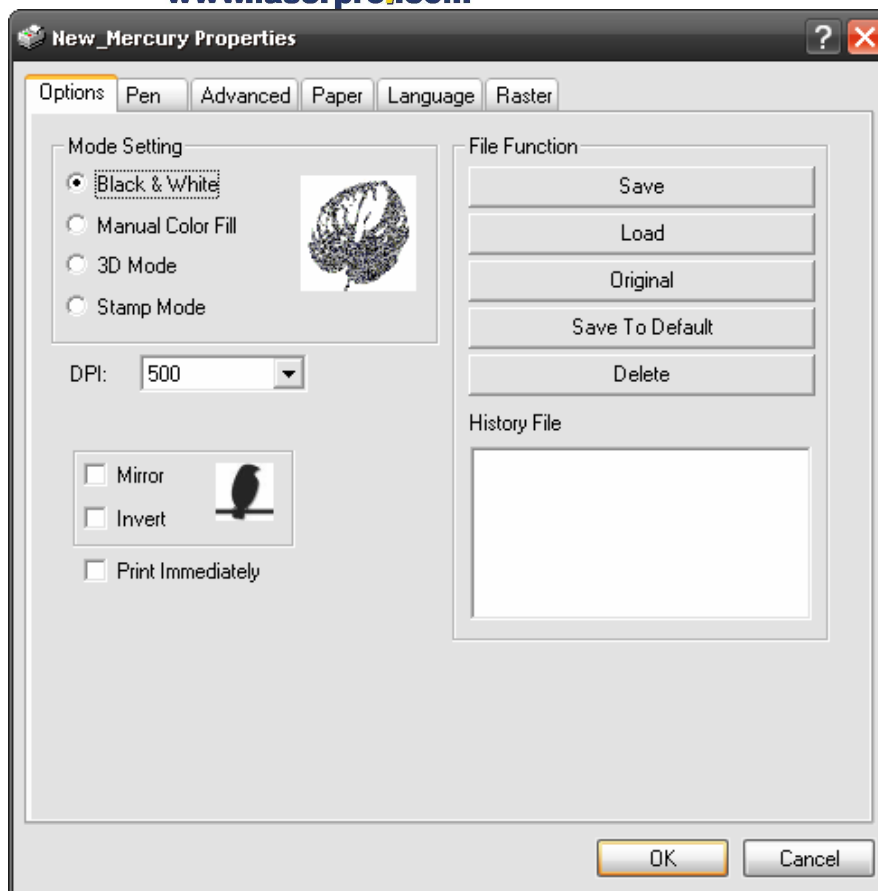
- Option Page
- Pen Page
- Advance Page
- Paper Page
- Language Page
- Raster Page (appears only in Black & White Mode)
- Stamp Page (appears only in Stamp Mode)



The following sections describe the specific functions for each of the settings found in the LaserPro New Mercury Print Driver. If you are new to laser engraving, it is recommended that you first familiarize yourself with the general principles of the laser process in Section 6, especially the Vector Cutting and Raster Engraving concepts. This will make it easier to understand the various descriptions and terminologies used in this section.

5.2.3.1 LaserPro New Mercury Print Driver >> Option Page





Mode Setting (OPTION PAGE)

[DEFAULT SETTING: Black & White]

You can select from four primary mode settings, depending on your application or results you would like to achieve.

Black & White: Select this mode when using clipart images or drawings with several colors, shades of gray, or many outlines. This mode outputs in a method similar to that of a black and white laser printer. The entire selected image will be engraved using a single set of power and speed settings (the black pen from the PEN menu. Please refer to the next section of the manual for details regarding the PEN functions). The LaserPro New Mercury print driver will interpret colored and shaded areas as different shades of gray by producing a halftone effect while engraving. Instead of engraving only solid lines, gray/halftone areas will be a collection of dots with varying density.

The resolution and depth of these halftone areas can be adjusted with the DPI setting found on the Options page. Please note that selecting the Black & White mode will add a new Raster page to the menu. The Black & White mode dithering settings can be changed from the Raster page. (Please refer to the Raster section below for details). Experiment with different dithering settings to attain the desired results.



TIP

The Black & White mode interprets the processed image by the varying colors and shades. For the best results, we suggest you convert the image to a grayscale image



with your graphics software prior to engraving in the Black & White mode.



Selecting the Black & White mode will enable the Raster page on the LaserPro New Mercury Print Driver, allowing you to adjust advanced stamp-related settings.

Manual Color Fill: Select this mode when you would like to designate specific power and speed settings and link them to certain colors of your image. The LaserPro New Mercury print driver allows a maximum of 16 pen parameters to be set.

3D Mode: Select this mode to attain a sculptured 3D effect on your engraving. By using images that have a range of gray areas, the LaserPro New Mercury print driver can manipulate the image to give it an added depth, by linking the laser power (depth of engraving) to specific colors. The settings can be adjusted through the DPI setting (Option page) and PPI, power and speed settings (Pen page).

Stamp Mode: Select this mode when you would like to engrave stamps. The stamp mode is one of the more dynamic functions of the LaserPro New Mercury. Due to the unique engraving nature when engraving a stamp, the stamp production requires different operational steps than most engraving or cutting operations.



Selecting the Stamp mode will enable the Stamp page on the New Mercury Print Driver, allowing you to adjust advanced stamp-related settings.

DPI (Option Page) [DEFAULT SETTING: 500]

DPI (dots-per-inch) represents the number of times the laser will fire over a one-inch path. This setting determines the image resolution and quality when performing raster engraving functions. Higher DPI settings result in cleaner and deeper engravings, but require more time to complete. Lower DPI settings result in coarser and shallower engravings, but require less time to complete. The LaserPro New Mercury offers 8 DPI options: 125, 250, 300, 380, 500, 600, 760, and 1000, experiment with different settings to get your desired effect.

Below is a chart for your convenience detailing the Set DPI (your input setting) vs. Actual DPI (your output results).

Set DPI	125	250	300*	380	500	600*	760	1000
Actual DPI	127	254	381	381	508	762	762	1016

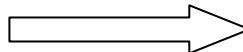
- Mirror (Option Page)
- [DEFAULT SETTING: Unselected]



- Checking this box will automatically engrave your image with a mirrored effect. This setting will flip the image along the Y-axis from left to right and vice-versa.



When engraving a stamp, via the stamp mode, the stamp image needs to be engraved in reverse (mirrored) for the final stamp to be correctly laid out.



Mirror Effect

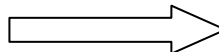
Invert (Option Page)

[DEFAULT SETTING: Unselected]

Checking this box automatically inverts / reverses the color of your image (the white areas become black and vice versa). The Invert option is not available if disabled with Manual Color File mode is selected.



Invert mode is useful when creating a stamp in Stamp Mode, as inverting your normal image will set the negative space to be engraved out, with the remaining positive space (your stamp design) protruding out.



Invert Effect

Print Immediately (Option Page)

[DEFAULT SETTING: Unselected]

Checking this will instruct the LaserPro New Mercury to immediately begin the laser engraving process, when you select Print from your graphic software program. If Print Immediately is not checked, then selecting Print will transfer the job file to the LaserPro New Mercury system and will need to be initialized from the LaserPro New Mercury control panel.

File Function (Option Page):

The file function section allows you to manage various laser parameters. This section is useful when performing duplicate jobs on a variety of objects, allowing you to save your frequently used laser parameters and load them in the future.

- **History File:** This section contains a list of the recent files you have recently created and worked with.



- **Save:** This function will save the current print driver parameter settings to a file and location on your computer of your selection. (Saved parameter setting files will be tagged with the .MER extension)
- **Load:** This function allows you load previously saved print driver parameters or LaserPro parameter database.
- **Original:** This function will load the print driver's original factory parameter settings.
- **Save To Default:** This function allows you to save your current print driver parameters as the default start-up settings.
- **Delete:** This function will delete the file you select from the History File section. Please note the Delete function only removes the file from the history file section, it does not remove the .MER file from your hard drive, if you wish to completely remove the file from your hard disk, then you will have to manually delete the file from your operating system.)

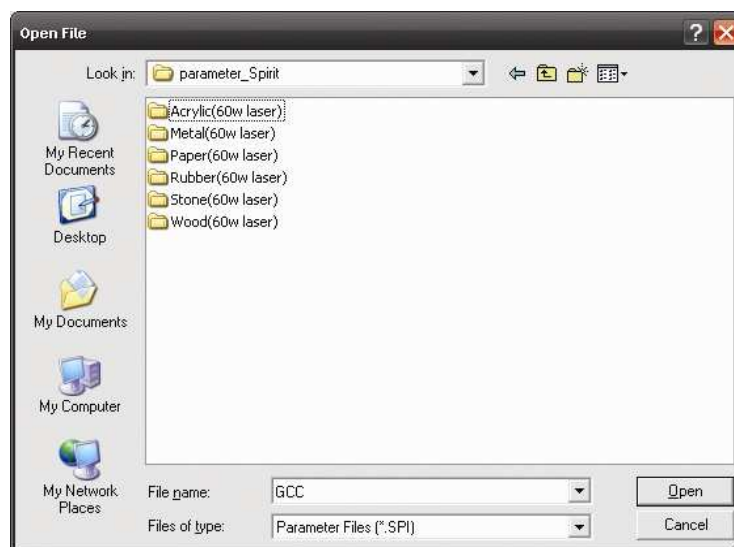
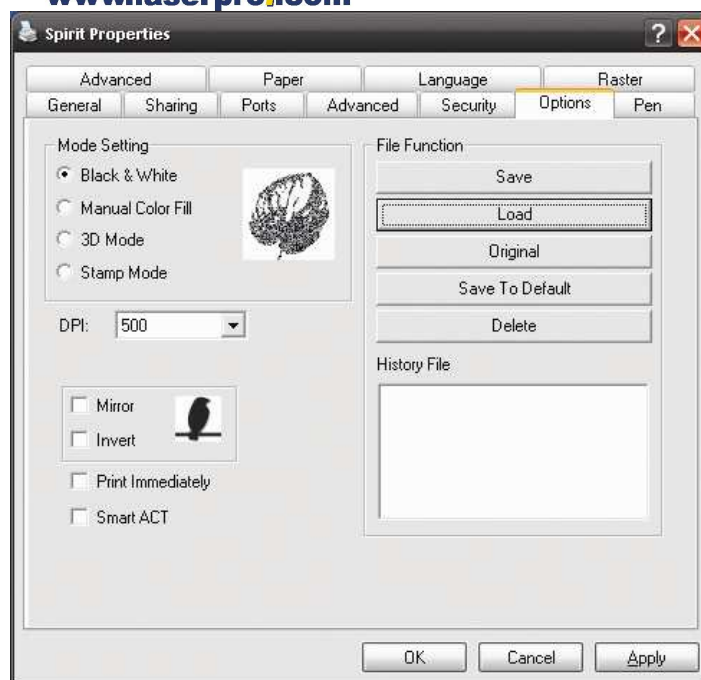


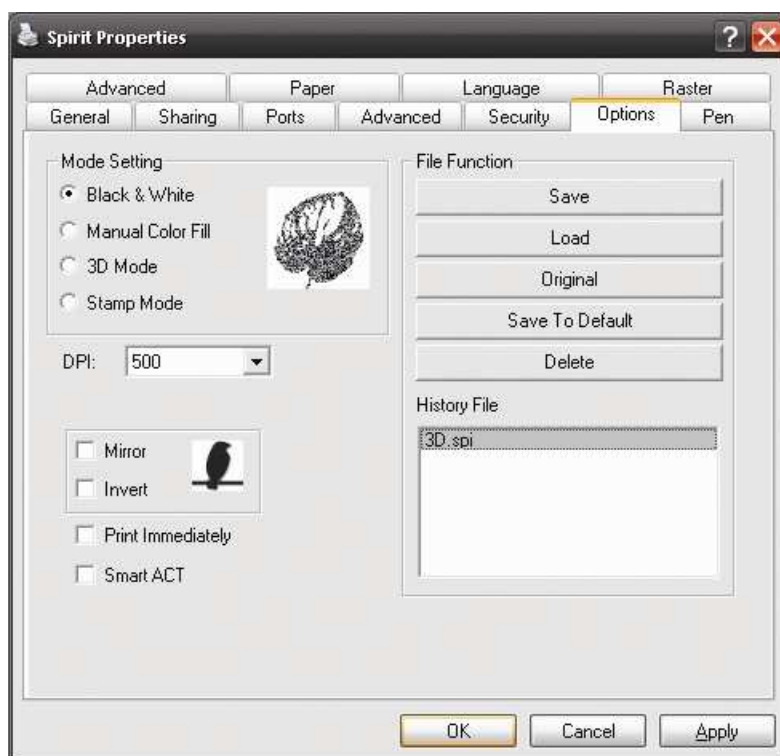
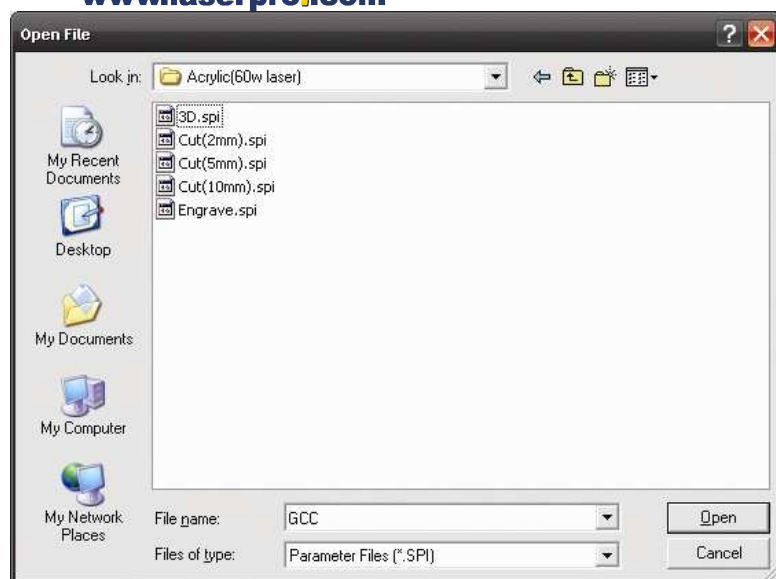
If you are using Windows 2000 or XP as your operating system, then make sure you log in with an administrator or administrator-rights account in order to properly save laser parameter settings.



LaserPro material database settings allow you easy to load the several parameters. If you are loading LaserPro parameter database as your operating parameter, please direct load from several build-in parameter folders.



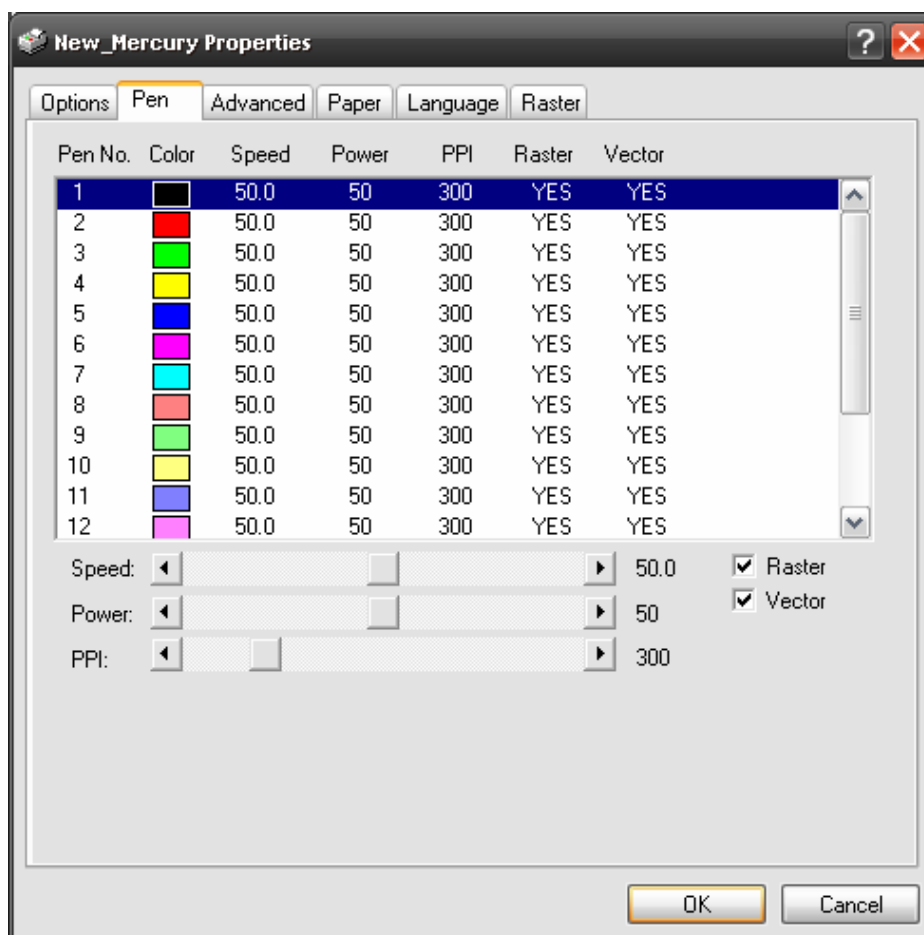




5.2.3.2 New Mercury Print Driver >> Pen Page

The LaserPro New Mercury incorporates the use of 16 different colors to represent 16 different laser power and speed settings when cutting and engraving. These colors are referred to as "Pens". Think of each pen as a designated laser setting, rather than as a color. As an example, a black and white image will use only one power and speed laser setting (Black). An image that is made up of black, red and blue colors will be processed using the laser settings designated for each particular color. In order to utilize up to 16 different pens (laser parameter settings), make sure your graphics software can recognize and utilizes the 16 pen colors designated by the New Mercury print driver.

If you would like to specify your own colors to designate to a particular laser setting, then all you have to do is to double-click on that particular pen color from the pen menu and a color manager window will open where you can select "define custom colors" to define your own color (shown in the picture below). This is useful when your image is composed of colors that are not part of the pen menu's default color selection, and instead of modifying your image, you simply assign the laser settings based on the existing colors based on your current image.





NOTE

The New Mercury print driver can store up to 16 pen colors or different laser parameter settings per file.

Speed (Pen Page)

[DEFAULT SETTING: 50]

The speed slider controls the laser's speed during operation (engraving speed) with a range setting from 0.1 – 100%. The New Mercury's maximum laser processing speed is 40 inches per second, therefore a setting of 100% speed is equivalent to 40 inches per second and a 10% speed setting would be equivalent to 4 inches per second. Keep in mind, this is the speed the laser moves at when cutting or engraving straight lines. The machine will automatically slow down when processing curves.



TIP

Cutting / engraving depth and quality are determined by a combination of power and speed. Slower speeds at higher power will produce deeper cuts and engravings, whereas higher speeds at lower power will produce more shallow cuts and engravings.

Power (Pen Page)

[DEFAULT SETTING: 50]

The power slider controls the laser's power during operation (engraving power) with a range setting from 1 – 100%. The percentage setting represents the power for each laser pulse fired.



TIP

Cutting / engraving depth and quality are determined by a combination of power and speed. Higher power and slower speeds will produce deeper cuts and engravings, whereas lower power and higher speeds will produce more shallow cuts and engravings.

PPI (Pen Page)

[DEFAULT SETTING: 400]

PPI (pulses-per-inch) represents the number of times the laser pulses (fires) per linear inch, exclusive for vector cutting. Higher PPI settings will generate deeper, overlapping laser pulses, resulting in cleaner cuts. Lower PPI settings (lower than 150) will result in the individual laser pulses being spread apart, resulting in a perforated effect (similar to the perforation in the paper between mailing stamps).

If you drag the PPI slider to the furthest right (maximum), the value will change to X. This completely disables the PPI control and continuously fires the laser non-stop, without pulsing. Think of setting PPI to X as being equivalent to turning a water facet on with the water continuously flowing out. This also disables the power ramp functionality, which



automatically controls the PPI depending on the speed of the laser carriage (such as vector cutting around the corner of a square).



For Vector Engraving jobs, we recommend a PPI setting > 150

For Vector Cutting jobs, we recommend a PPI setting of > 400

Raster / Vector (Pen Page)

[DEFAULT SETTING: Selected]

Checking the Raster checkbox will process only the raster functions for the areas of your design that correspond to that particular “pen” color.

Checking the Vector checkbox will process the vector functions for the areas of your design that correspond to that particular “pen” color.

As an example: a particular “pen” color may be assigned to areas in your design containing color fills (raster engraving) and very thin lines (vector cutting). By checking / un-checking the Raster and Vector will force the driver to process / ignore the color fills / thin lines.

	Vector Checked	Vector Unchecked
Raster Checked	Processes both Vector and Raster functions for that particular color	Processes only the Raster functions for that particular color (Vector functions ignored)
Raster Unchecked	Processes only the Vector functions for that particular color (Raster functions ignored)	Does not process Vector or Raster functions for that particular color

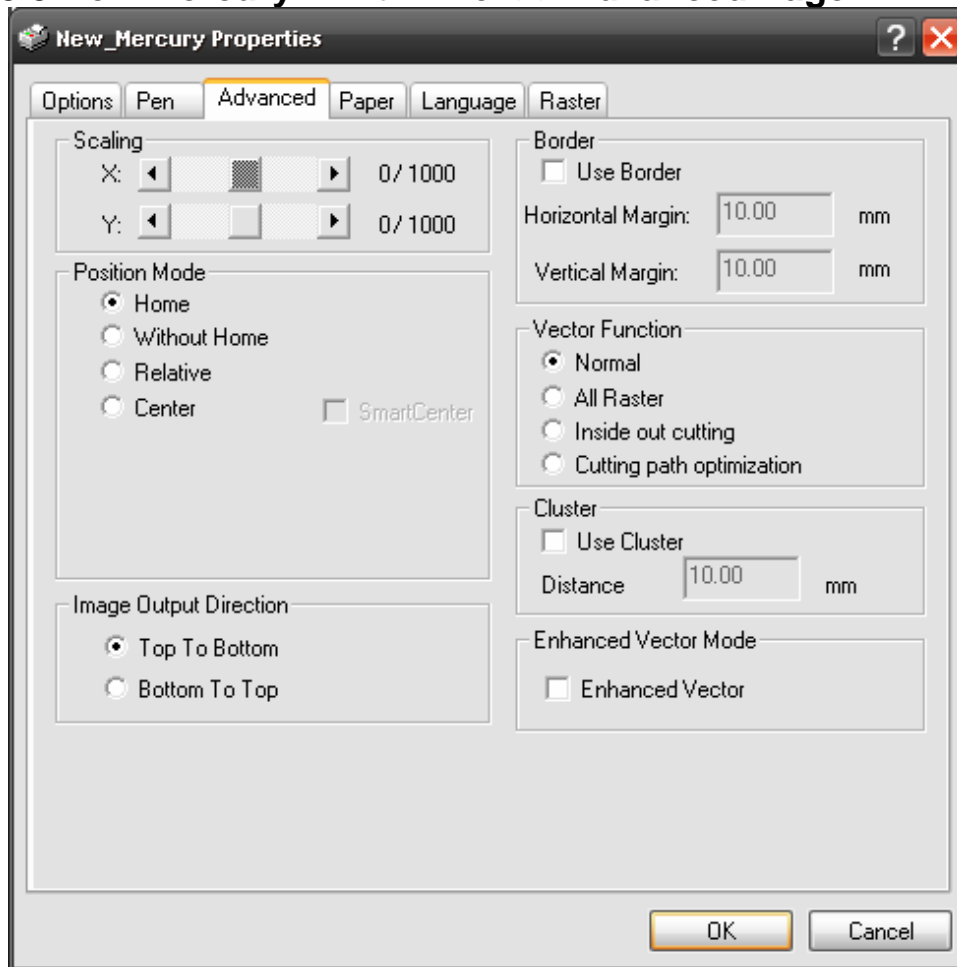
Air (Pen Page)

[DEFAULT SETTING: Unselected]

This checkbox controls the SmartAIR air-assist function (if you have the optional air compressor installed). By selecting a pen color and checking this box will enable the SmartAIR air-assist function for that particular pen color. As an example, if you are performing a combination of both surface raster engraving job and deep vector cutting on a material such as acrylic, you may want to enable the SmartAIR air-assist for the vector cutting sections to get the cleanest cuts. To do this, you would simply need to select the pen color that you have assigned to the sections to be cut and select the Air checkbox for those particular pen colors.



5.2.3.3 New Mercury Print Driver >> Advanced Page



Scaling (Advanced Page)

[DEFAULT SETTING: 0]

In some cases you may find a slight output inaccuracy in the actual output compared to what you have set in the computer. This margin of error or offset is extremely small (approximately 1/300). What this means is that there may be a 1-unit offset for every 300 unit increments. As an example, if you engrave a 300mm straight line, it may end up measuring only 299mm or 301mm in the final output. In this case, you will want to set the scaling setting to +1 / 1000 or -1 / 1000 respectively to compensate. A general rule of thumb is for every 300 unit increment, you will want to adjust the slider by +1 if the final output is 1 unit increment shorter or -1 if the final output is 1 unit increment longer than your graphic design setting.

Position Modes (Advanced Page)

[DEFAULT SETTING: Home]

These selections allow you to control the positioning of the lens carriage after each job completion and before the next subsequent job.

- **Home:** Resets the positioning of the lens carriage to the 'home position' (upper-right) before and after each job.



- **Without Home:** The lens carriage will start the next job based on the position from its graphic application software setting, from the last position of the previous job. Upon completion of the current job, the lens carriage will remain at the last position of the previous job.
- **Relative:** This mode sets the current lens carriage position to correspond to the origin (top left) position of the graphic software. Therefore, the lens carriage will process the job from its current position relative to its setting in the graphics software.
- **Center:** Sets the current position of the lens carriage as the center point for your subsequent job. As an example, if the subsequent job is to vector cut a circle and you have the Position Mode set to Center, then the New Mercury will vector cut a circle around the initial position of the lens carriage.



It is highly recommended you enable the red dot laser pointer when setting / adjusting the Position Modes, as this will ease your job positioning with more accuracy.

Image Output Direction (Advanced Page)

[DEFAULT SETTING: Top to Bottom]

These selections allow you to control the direction in which the system processes an engraved image.

- **Top To Bottom:** Selecting this will force the system to process the current task by moving the laser carriage from the top to the bottom of the image (rear end to front end of the work table).
- **Bottom To Top:** Selecting this will force the system to process the current task by moving the laser carriage from the bottom to the top of the image (front end to rear end of the work table)

(Normally, the LaserPro New Mercury engraves from left to right, top to bottom. Selecting Bottom Up will force the machine to start from the bottom and work its way to the rear of the working table.



In situations where the material you will be working with may produce a lot of dust byproducts and you are utilizing the optional air extraction system, it is recommended you select the Bottom To Top image output direction option. This will minimize the amount of dust byproducts lodged in the engraved sections as the air extraction system is vented from the rear of the machine, the same direction as the image is processed.

Border (Advance Page)

[DEFAULT SETTING: Unselected]

In cases where you are working with a negative image (negative outline areas of your



image are engraved, rather than the positive areas), you may wish to include a border around your image. To properly add a border, you will first need to Invert your design from the Option Page, then check Use Border and specify a value for the thickness of the border you would like to add to your design.

This mode is useful for engraving rubber stamps, as it allows you to create the outline around your stamp image.



If you wish to use the Border and Cluster function simultaneously, then the Border Thickness value must be **less than** the Distance value specified in the Cluster setting.

Vector Function (Advanced Page)

[DEFAULT SETTING: Normal]

- **Normal:** This selection will not apply any special advanced vector function to your job. This is the default Vector Function setting.
- **All Raster Output:** This selection will instruct the print driver to process your entire image as a raster engraving. Any vector lines within the image will be treated as raster data and outputted as a raster engraving, similar to a dot-matrix printer.
- **Vector Sorting:** When performing a vector cutting job in which your image has one vector cut area enclosed within another vector cut area, select the Vector Sorting mode. This mode will automatically instruct the print driver to process the inside vector image and moving outwards. If you try to process a vector image that has multiple layers without using this mode, what may occur is the laser engraver may process the outer vector cutting first, and any inner vector cutting will not be possible as your centerpiece material may have dropped to the cutting table. This setting will always automatically direct the laser to cut from the inner most vector shape and move outwards.
- **Optimization Sorting:** This is a setting that will minimize your process time. When selected, the print driver will analyze your image and automatically determine the most efficient processing path to process your image.

Use Cluster (Advanced Page)

[DEFAULT SETTING: Unselected]

This setting allows you to change how the New Mercury interprets and processes individual / independent areas of an image in order to minimize job-processing times. The Cluster function is only applicable when multiple areas of an image are broken down and isolated from each other (areas not touching each other, blank space in-between). Another condition that must be met for the Cluster function is that these individual areas of your design must have some X-axis overlap, meaning that they should be to some extent side-by-side with empty spaces between them. The distance value can be set by the user and represents the limit or cutoff point in which side-by-side objects will be processed in Cluster mode or not. If the distance between side-by-side objects is greater than the set distance value, then the individual areas will be processed in Cluster mode. Conversely, if the distance between side-by-side objects is lesser than the set distance value, then the individual areas will be processed normally (not via Cluster mode).



An example of an image that would benefit from the Cluster function would be: 2 squares to be engraved, side-by-side on the X-axis with a 20 cm gap in between them. In this scenario, you would want to enable the Cluster setting and set the distance to a value less than 20. By doing so, the laser will completely process one square and “leap-frog” to the second square, rather than processing both squares simultaneously. The result: you shorten the processing time by minimizing the unnecessary travel distance the lens carriage needs to make across the X-axis in between squares, if they were to be processed simultaneously.

NOTE

If you wish to use the Border and Cluster function simultaneously, then the Border Thickness value must be **less than** the Distance value specified in the Cluster setting.

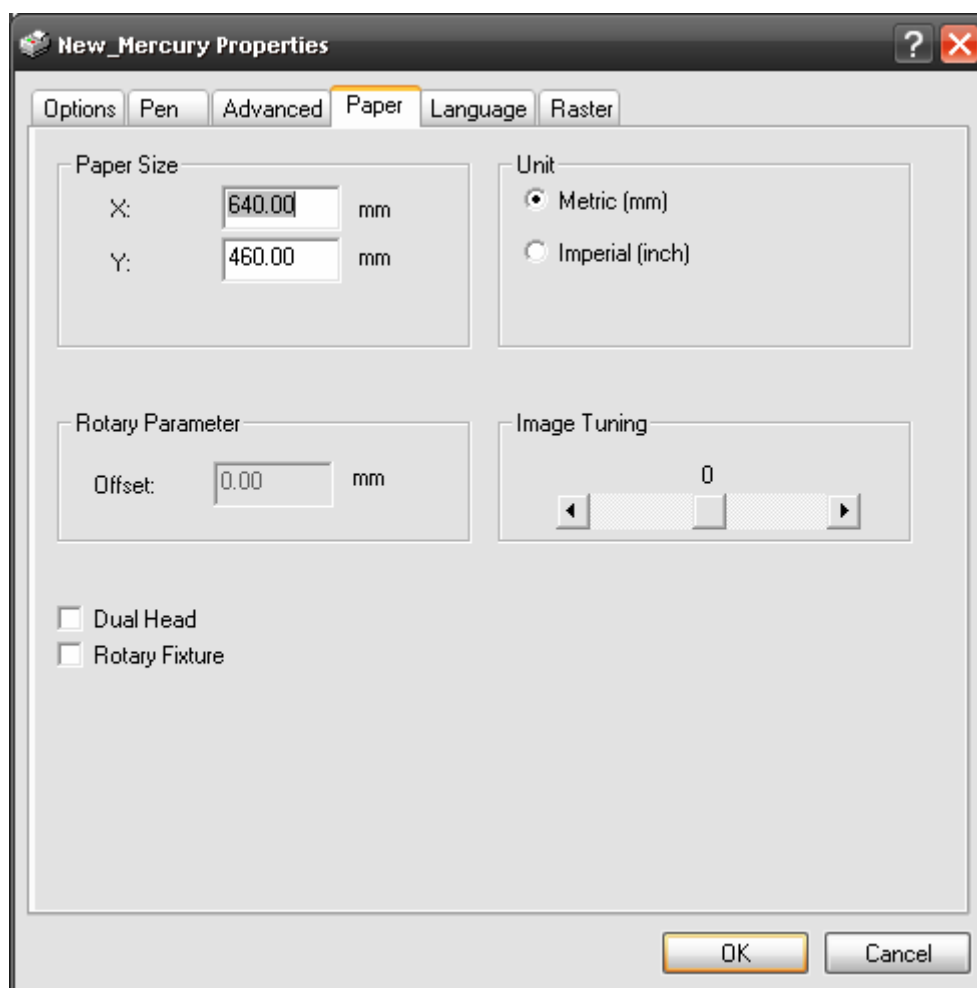
Enhanced Vector Mode (Advanced Page)

[DEFAULT SETTING: Unselected]

This setting allows you to improve the cutting quality at the expense of speed. Your engraving speed will be dropped by 50%, to maximize the cutting power. We recommend that you enable this function when cutting thicker materials.



5.2.3.4 New Mercury Print Driver >> Paper Page



Paper Size (Paper Page)

The paper size represents your total work area. Ensure that the paper size is never set greater than the New Mercury's worktable area of 25" x 18" (640mm x 460mm). The X value represents the length and the Y value represents the width.

NOTE

When using the optional rotary attachment system and with the Rotary Fixture option checked, the X value represents the length of your working piece. The Y value will be changed to Diameter, which represents the diameter of your working piece (at the position you wish to engrave).

Unit (Paper Page)

[DEFAULT SETTING: Metric (mm)]

Here you can set your preferred measurement standard in which you would like use with the New Mercury print driver. You can choose between metric or imperial standards.

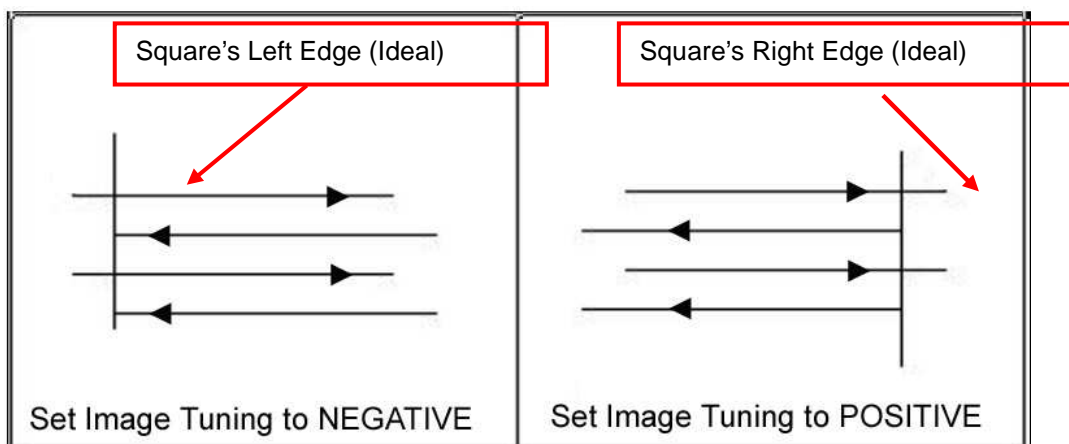


Image Tuning (Paper Page)

[DEFAULT SETTING: 0]

In the event that you are processing extremely fine and detailed designs requiring near-microscopic edge-to-edge precision, you will need to adjust the image tuning setting. To adjust this setting, we recommend that you engrave a small black square design as a sample and apply a magnifying glass to the engraved results.

When you look at your engraved test square under a magnifying glass, you may notice the edges of your square may be slightly offset, with every consecutive engraved even or odd line protruding past the square's ideal edge. This occurrence may occur on the left or right side of the square and can be compensated for by the image tuning setting. In the diagram below, the arrows refer to the direction the lens carriage is moving to generate that engraved line. If the first and every other line protrude to the **left** of the square's ideal edge, you will want to set the image tuning to a **negative value**. If the first and every other consecutive line protrude to the **right** of the square's ideal edge, you will want to set the image tuning to a **positive value**. The further the protruding lines are from the square's ideal edge, the larger you will need to set the Image Tuning value to compensate.

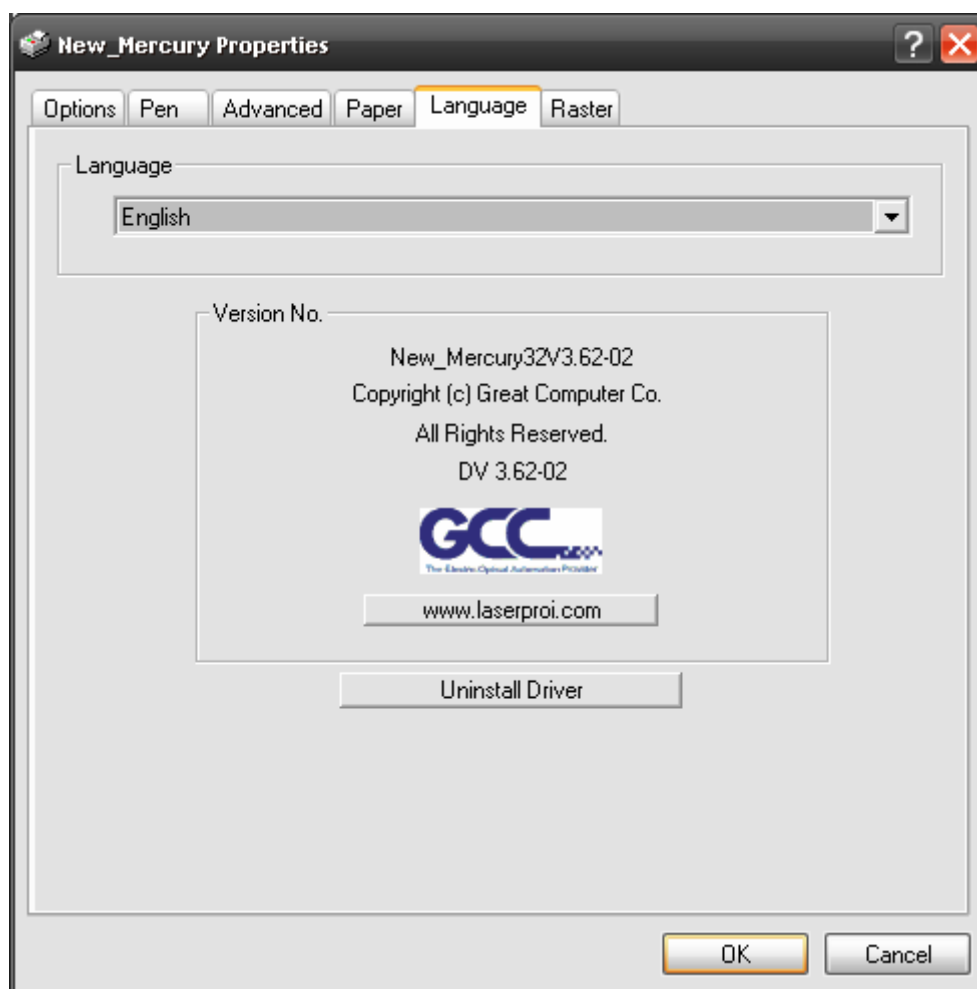


The following is an example that has the proper image tuning, and demonstrates this significance when engraving fine, small, intricate text. The following two pictures show engraved text magnified with no image tuning (left picture) and image tuning enabled (right picture).



5.2.3.5 New Mercury Print Driver >> Language Page

This page allows you to specify the language displayed by the New Mercury Print Driver. Current language options allow for: English, Spanish, French, and Chinese (Simplified, Traditional), Japanese, and German.



Uninstall Driver (Language Page)

Select this to uninstall the New Mercury print driver. You will then need to restart your computer to complete the process.

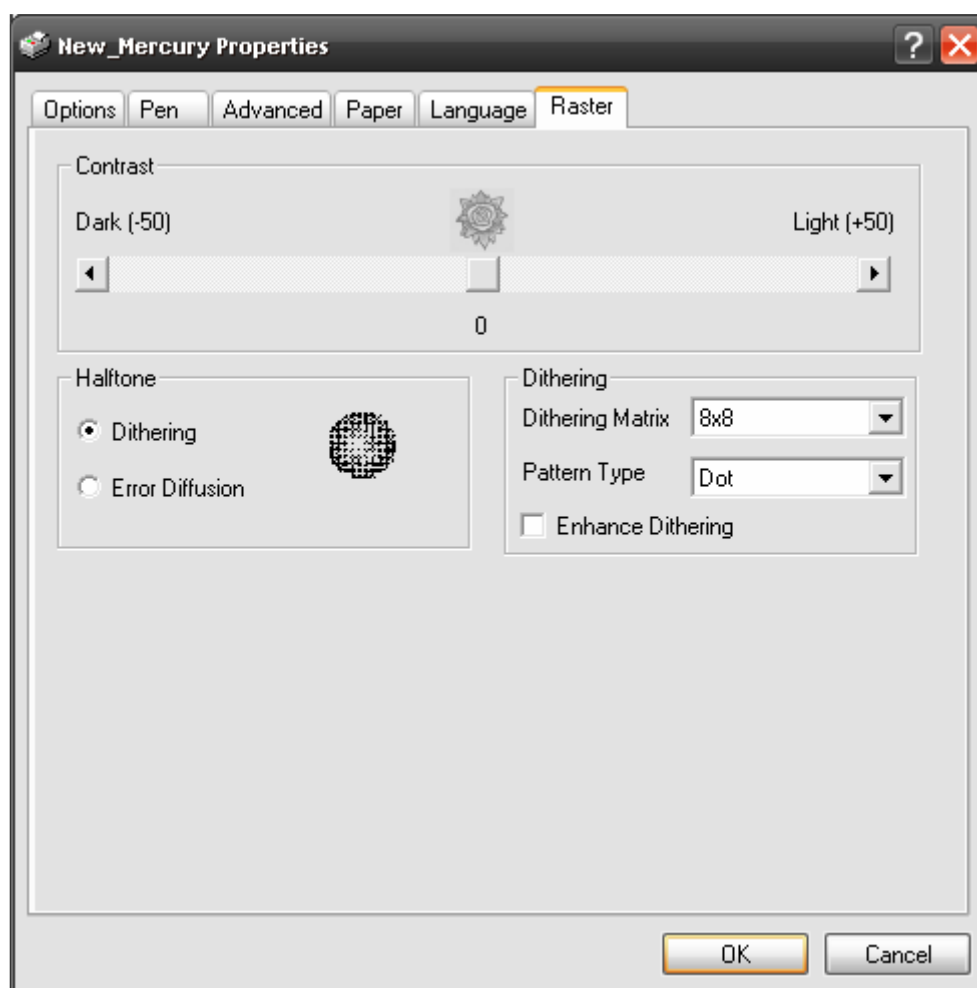


5.2.3.6 New Mercury Print Driver >> Raster Page



NOTE

The Raster Page is only available when Black & White Mode Setting is selected from the Option Page; this page offers a number of advanced Raster Engraving output options.



Contrast (Raster Page) [DEFAULT SETTING: 0]

This provides a quick and easy way to immediately adjust the contrast of an engraved image. Moving the slider to the Dark setting will increase the contrast levels of the engraved output, whereas moving the slider to the Light setting will decrease the contrast levels of the engraved output.



There are other ways to adjust an engraved image's contrast such as: adjust the power / speed settings or simply adjust the contrast of the image in software with the graphic software application.

Halftone (Raster Page)

[DEFAULT SETTING: Dithering]

This option controls the way a raster-engraved image is processed. The "digital image to engraved output" process can be processed via two methods: Dithering or Error Diffusion. Each offer additional output options yielding different output effects, style, and quality.

- **Dithering:** Interprets and outputs the raster engraving via the dithering method. This mode will allow you to select the Pattern Type and Dithering Matrix, and Enhanced Dithering.
 - **Pattern Type: Dot, Bayer, Corner, 45 Degree**
[DEFAULT SETTING: Dot]

Each pattern type uses a different shape and arrangement of dots to compose the shading effect of a raster image.

The following diagram is an example of the raster effects when using the different pattern types.



Dot



Bayer



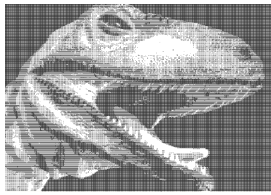
Corner

- **Dithering Matrix: *Variable depending on the Pattern Type selected.***
[DEFAULT SETTING: 8x8]

This controls the resolution (dot size) and the number of dots the image is broken down into for the dithering process. As an example, selecting 2 x 2 will shade with a 5-grade halftone, where as an 8 x 8 Dithering Matrix will dither with a 65-grade halftone.

The following diagram is an example of the raster effects when using the different dithering matrices.

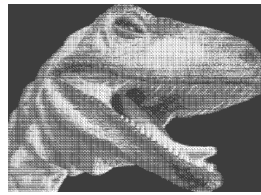




2 x 2 Dithering



8 x 8 Dithering



2 x 2
(Enhance
Dithering)



8 x 8
(Enhance Dithering)

- **Enhance Dithering**
[DEFAULT SETTING: Unselected]

Selecting this will produce a finer dithering output.

- **Error Diffusion (Raster Page):** Interprets and outputs the raster engraving via the error diffusion method. This mode will allow you to select from three diffusion types: Floyd, Stucki, and Jarvis.

- **Diffusion Type: Floyd, Stucki, Jarvis**
[DEFAULT SETTING: Floyd]

Each diffusion type presents the shade of image as different spread halftones instead of dots to compose a raster image.

The following diagram is an example of the raster effects when using the different diffusion types.



Floyd



Stucki



Jarvis



TIP

There is no “correct” or “best” setting when using the Raster options. The most appropriate settings will be based on a variety of factors: your design, the material you are engraving on, and the results you wish to achieve, etc. Please take some time to experiment with the multitude of raster options to get the one you feel is the best for your piece. This is where much of the fun in engraving is....experimentation!



5.2.3.7 New Mercury Print Driver >> Stamp Page

Producing stamps require different operational steps than your standard engraving or cutting jobs. The Stamp page offers dynamic options allowing you to customize your stamp production process.



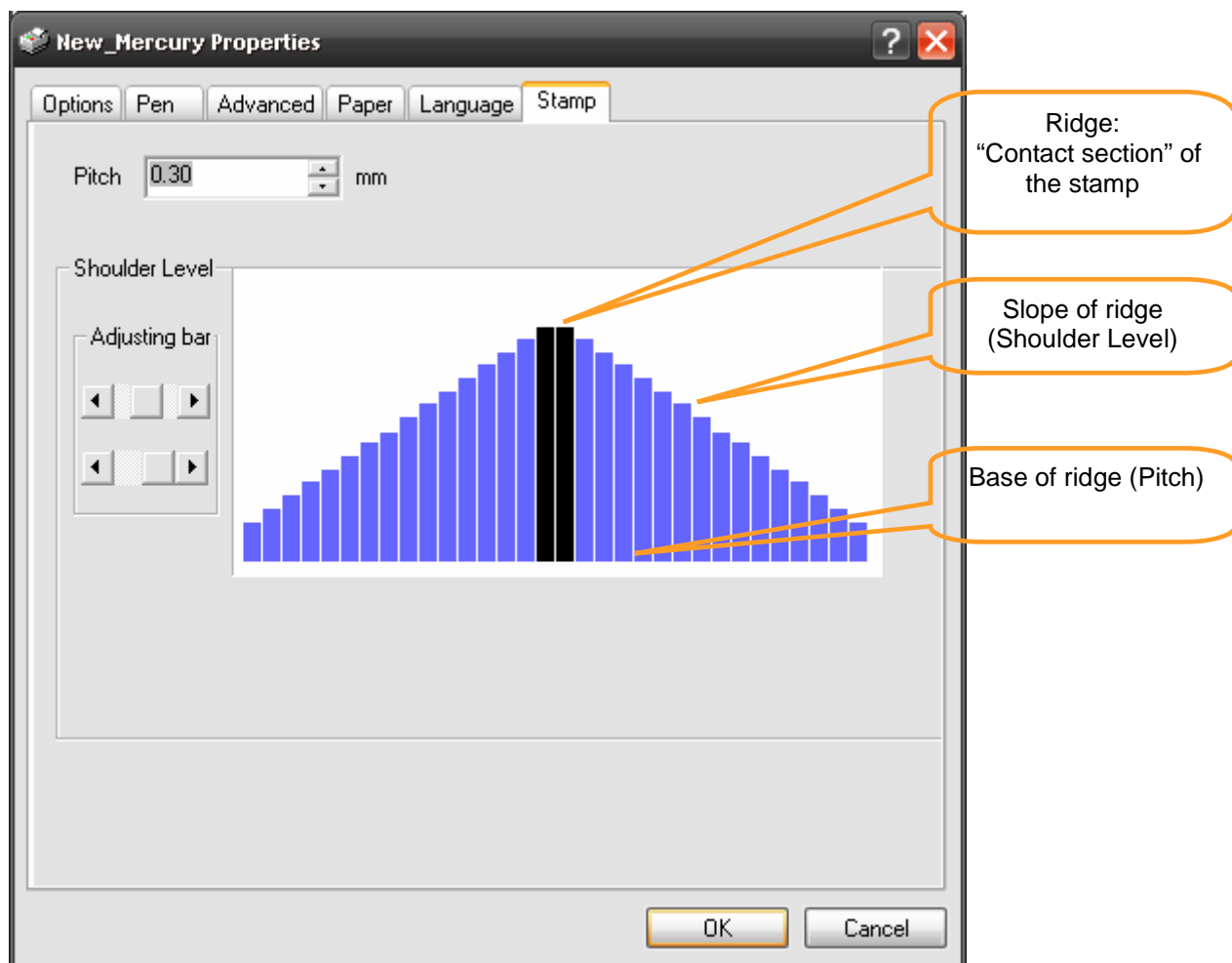
NOTE

The Stamp page will only appear and be accessible when you have selected the Stamp Mode from the Option Page.



TIP

Functions located on the other pages that are useful when making a stamp: **Set Shoulder, Pitch, Border, Invert, and Mirror.**



■ Pitch (Stamp Page)



- Your stamp will be a reversed image composed of engraved depressions and ridges. Think of these ridges as the “contact sections” of the stamp. If the ridges of these contact sections are too thin, they may break. The Pitch setting allows you to increase the width of the ridge base, hence creating more stable “contact sections” and longer lasting stamp. The pitch value setting allows you to adjust the base width of the ridge. Broad pitch gives the maximum amount of support for each ridge. Experiment with different pitch value settings in order to produce the stamp that is best suited for your application.

Adjustment Bar / Power Level (Stamp Page)

Another important aspect of creating a stamp is setting the slope level of the shoulder. The shoulder is the section from the “contact section” of the stamp to its base. This function allows you to adjust the slope for the shoulder sections of your stamp. By sliding the sliders or directly input of power levels, you will be able to change the slope of the shoulder.



The visual representations of the Pitch and Shoulder Levels in the New Mercury driver are an exaggerated representation to allow for easy visual guidance and precise input. Remember we are working with distances less than 1 mm here.



Chapter VI - BASIC MAINTENANCE

Caution:

- Keeping the optics and motion system clean is essential to an excellent quality engraving and the reliability of your engraver. **Please clean Bearing track and X-axis (DU) bearing daily to maintain good condition of machine.**
 - Never pour or spray any liquid directly onto the laser system.
 - Turn off the power and unplug the system before cleaning.
1. **Inside the System:** Open the top door, the front door and the back door (if necessary). Vacuum to clean inside of the engraver and vent area thoroughly.
 2. **Engraving Table:** Dampen the paper towel or cloth with alcohol or cleaner to clean the Engraving Table.
 3. **Motion System:** Dampen the cotton swab to clean the rails of the Motion System. Get rid off any debris built up in the bearing tracks.
 4. **Bearings:** Hold a dampened cotton swab against the bearing and moving the motion system by hand to clean each bearing.
 5. **Mirrors and Lens:** The focus lens and the mirror located on the carriage are the two components most likely to require frequent cleaning.

Caution:

Don't scratch out the soft coating of the mirror's surface. Excessive cleaning the mirrors and lens may cause damage and reduce their life cycle (refer to Fig. 24).



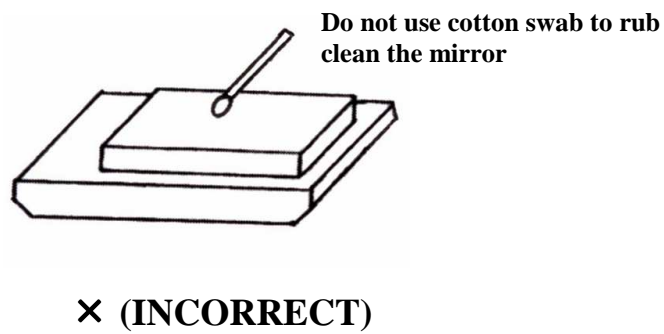
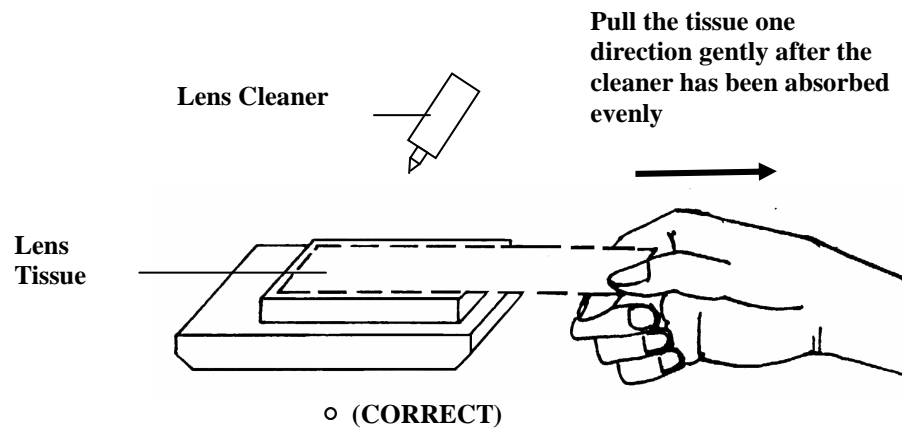
TIP

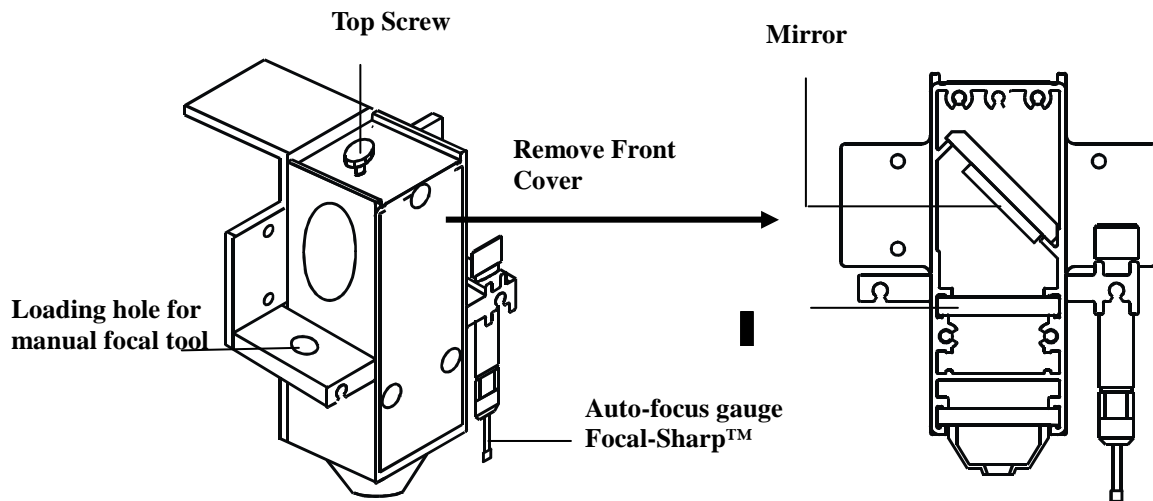
Please clean the AutoFocus pin each time after completing the engraved job to make sure the AutoFocus pin is not stuck.

6.1 Clean the mirror – Please refer to the figure as below

1. Unscrew and remove front cover of the focus carriage. Release the top screw and pull out mirror carefully.
2. Put lens tissue on the mirror and drop a little lens cleaner on the middle area of the tissue, after the fluid has been absorbed evenly, pull the tissue in one direction gently to clean the mirror.
3. Let it air dry and re-install it.
4. Unscrew and remove the dust prevention box then clean the X-axis Mirror, Y-axis Mirror and #1 mirror same as above process separately.







6.2 Clean the focus lens –

1. Unscrew and remove the front cover of the focus carriage. Pull out focus lens carefully.
2. Flood the focus lens with lens cleanser on both sides then using a cotton swab or lens tissue to dry off the remaining solution gently.
3. Do not touch the lens surface with your bare hands or press down hard with any cleaning material.



Chapter VII - TROUBLESHOOTING

7.1 Quality Problems

- Check focus length set under the function key to see if it matches the type of the lens installed.
- Focus Lens is not installed correctly. Focus Lens is loose in the holder.
- Debris or dust builds up in the bearing tracks or X-Axis rails.
- The focus lens and the mirror in the carriage are damaged or need to be clean.

7.2 Non-operational Problems

- **Laser beam does not generate.**
 1. If the red alignment beam is not revealed, the laser beam is misalignment. Adjust reflection mirrors for exact focus.
 2. If the red alignment beam is revealed, please check the driver power. The laser power may be too low to be detected. Please increase the percentage setting of the Laser Power from the software driver or the control panel.
 3. Please check if the laser power connector is loose.
 4. For safety purpose, the laser beam will not be generated when the top or front door is opened unless you short the connector of the magnetic switches.



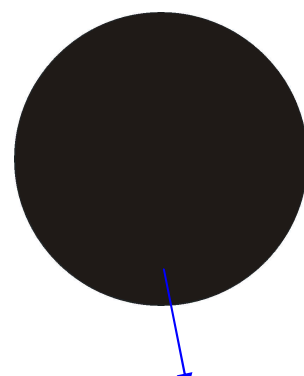
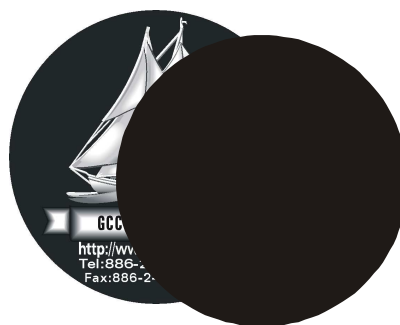
Appendix A. 3D Function

Tip for 3D Application

When doing 3D sample on LaserPro New Mercury (ME-25), acrylic or MDF wood are ideal materials for the purpose. For acrylic the suggested PWR is 100%, SPD around 30%(depends on how deep you want to cut).

The perfect image for 3D is like those shown below. When image is ready, choose 3D Effect as the output mode in the driver. Sometimes, some material shows better effect if you run the job with 2nd pass with laser out-of-focus. Especially with acrylic, the 2nd pass will smooth out the surface.

For engraving wood, as it burns easily and leaves blackened surface after the 1st pass, it is necessary to run the 2nd pass to remove the burned surface. To do that, simply fill the image with black color as the mask (see below) and Run the black mask image with PWR 100% and SPD100%.



Create a black image for polishing

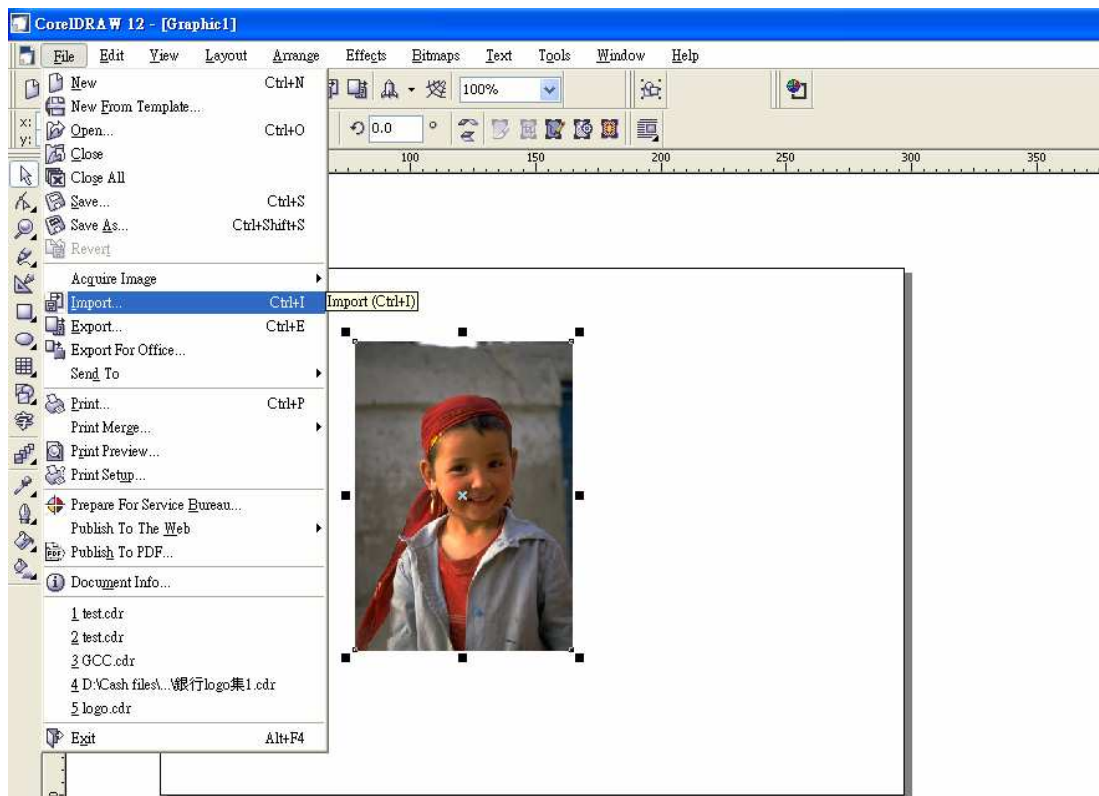


3D engraving / Material: 1cm Acrylic by New Mercury 25W Lens: 2 inch

Step	Speed	Power	DPI	PPI	Focus	Remarks
1	25%	100%	600	auto	Auto Focus	3D Mode Engraving
2	25%	100%	600	auto	Lower down table 2.5mm	3D Mode Engraving
3	100%	100%	600	800	Lower table again 2 mm	Black and White Mode Polishing
4	0.2%	100%	500	auto	Move table up 1.3mm	Cutting off

Appendix B. To modified image settings of a picture for better engraving quality

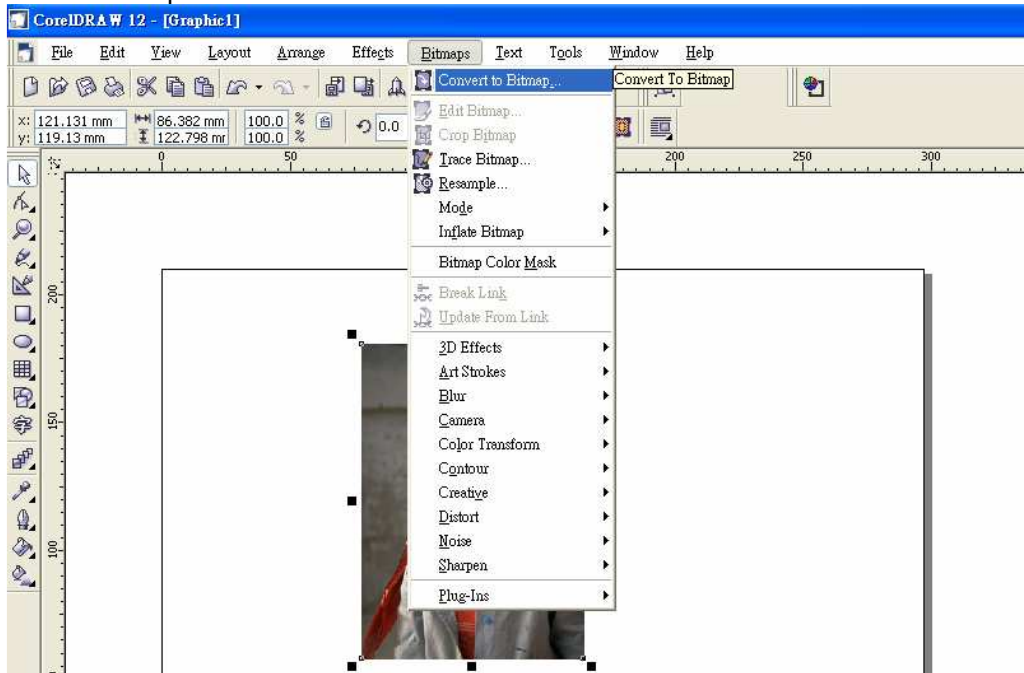
1. Connect your digital camera to the computer by USB cable.
2. Download the picture from the digital camera to the computer
3. Select the picture that you want to engrave.
4. Import the image from the folder where the picture is located by selecting File/Import



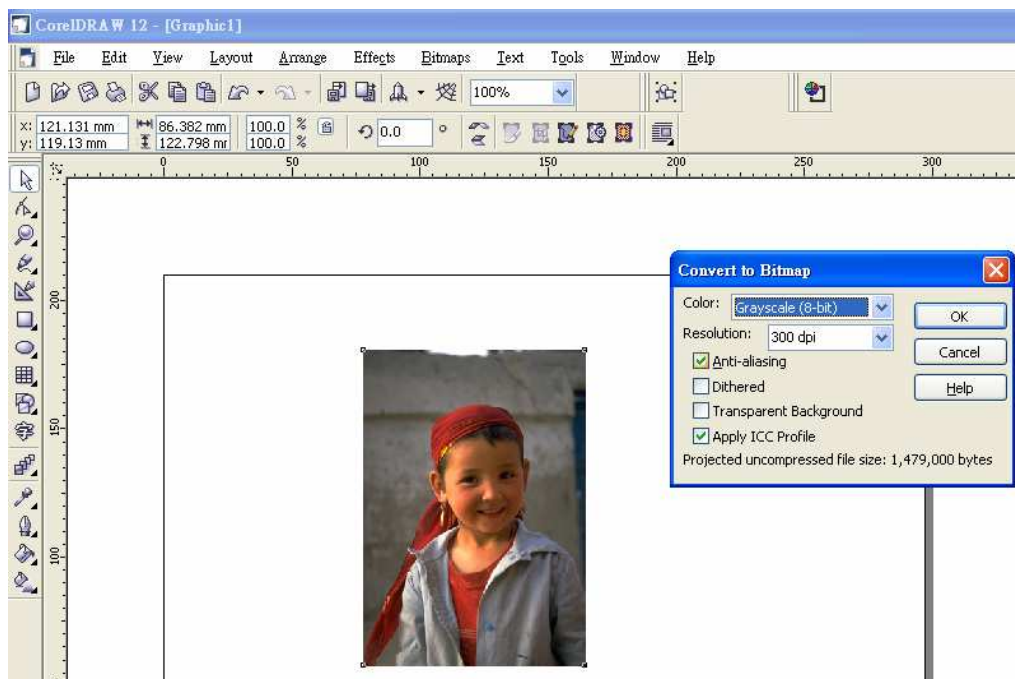
5. Convert the image to Bitmap by selecting the image and click on Bitmaps/Convert



to Bitmap

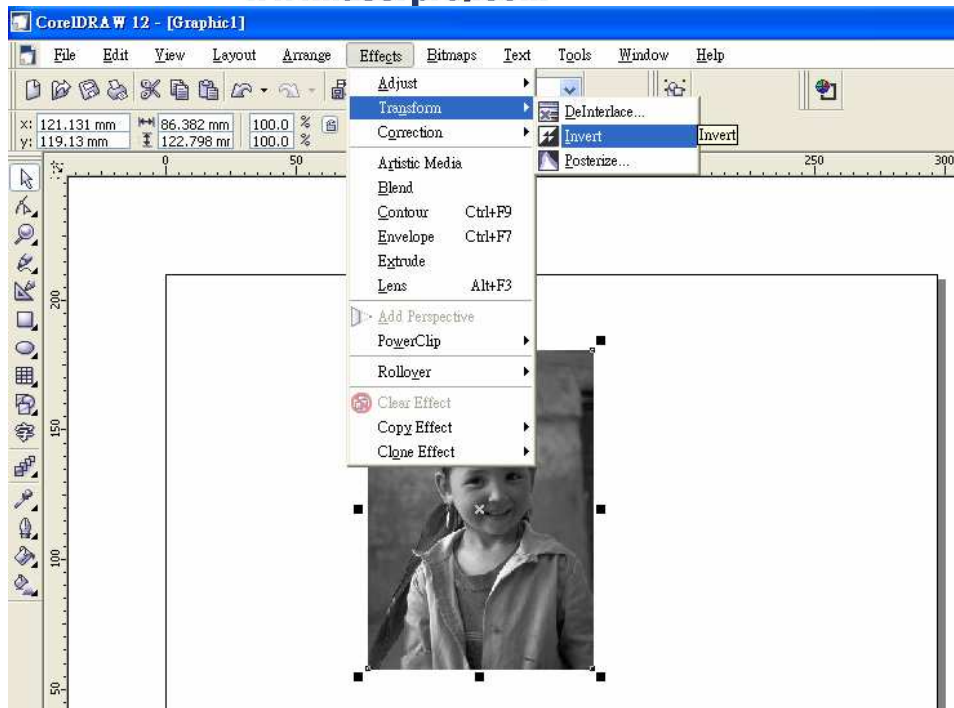


6. Change the Bitmap settings by setting "Color" to Grayscale (8-bit) and "Resolution" to 300 dpi and click OK.

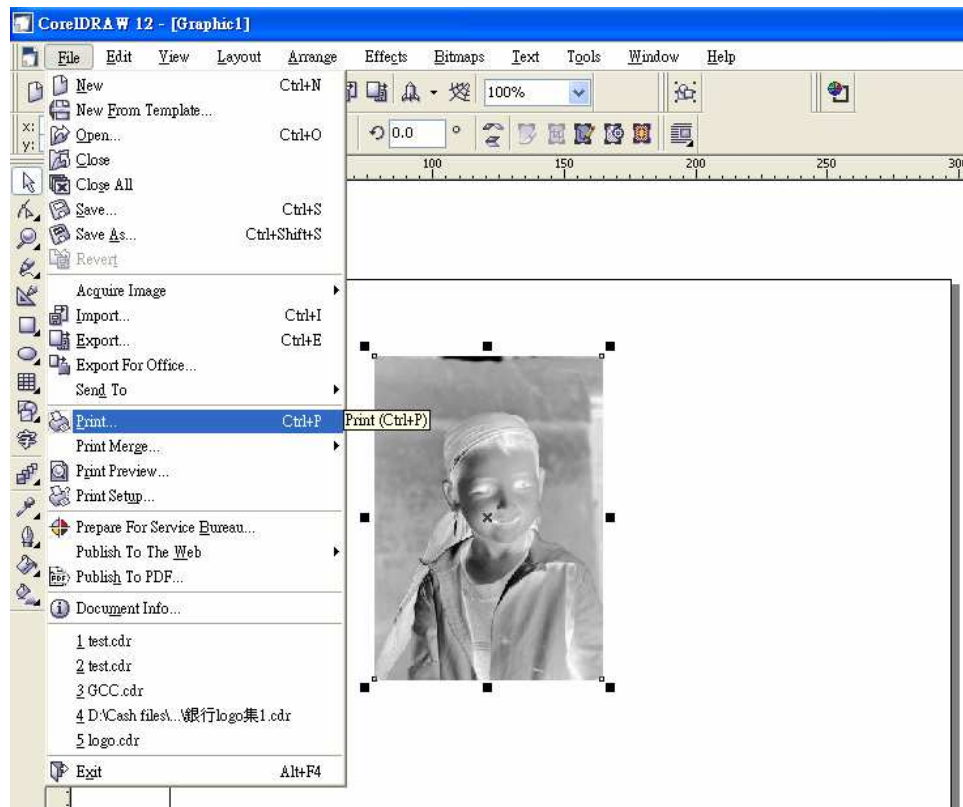


7. Finally, Invert the image by selecting Effects/Transform/Invert





8. Now you are ready to output the modified image by clicking File/Print



Note:

This instruction is a simple example for general use. There are many tips and tricks to achieve a good engraving quality. It takes a lot of practice and experience to achieve a good engraving quality. Different picture may need different modifications and different material may need different parameters.



APPENDIX C. Specification

New Mercury		ME-12	ME-25	ME-40	ME-60
Laser Source		12W	25W	40W	60W
		Sealed CO ₂ Laser			
Cooling		Air-cooled, Operating environment temperature 15°- 30° C (60° - 86° F)			
Work Area		25 x18 in. (640 x 460 mm)			
Max. Part Size (W x L x H)	All doors closed	31.5 x 22.4 x 6.5 in. (800 x 570 x 165 mm)			
	All doors open	26.8 x ∞ x 6.5 in. (680 x ∞ x 165 mm)			
Table Size		31.1 x 20.9 in. (790 x 530 mm)			
Dimensions		44.3 x 28.3 x 39.6 in. (1125 x 720 x 1005 mm)			
Drive		Closed-loop DC Servo Control			
Throughput*		166.3 in ² / hr (1072.8 cm ² / hr)			
Speed Control		Adjustable from 0.1~100% of 42 IPS (Up to 16 color-linked speed settings per job)			
Power Control		Adjustable from 1~100% (Up to 16 color-linked power settings per job)			
Z-Axis Movement		Automatic			
Resolution (DPI)		Available 200, 250, 300, 500, 600, 1000			
Computer Interface		Standard printer port and RS232 to USB Adapter			
Compatible Operating Systems		MS Windows, MAC OS			
Memory Buffer		32MB standard (Upgradeable to 64MB)			
Display Panel		4-line LCD panel showing current file name, total working time, laser power, engraving speed, file(s) loaded into memory buffer, setup and diagnostic menus			
Safety		Class 3R for red pointer			
Facility Requirements					
Electrical		Below 40 Watt, 100~240 Volt AC Auto Switching ; 40 Watt or above, 200~240 Volt AC Auto Switching			
Power Consumption		700W	880W	2000W	2200W
Air Exhaust System		External exhaust system required, one 4" connection on the back of the machine.			

*Throughput value represents the Max. number of 8" x 10" 500DPI raster jobs that can be done per hour.
Above specification is subject to change without notice.

