

Package contents

About us

Read me first!



Prestige 660HW



G-202 Wireless USB client adapter



ZyXEL installation CD



Power supply



RJ11 ADSL Data cable



Ethernet cable

- World's No 1 ADSL Router Vendor (Gartner Group 2005)
- World's No 1 SMB VPN & Firewall Vendor (Infonetics 2003)
- Europe's No 1 WLAN Equipment Vendor (IDC 2005)
- World's Top 3 IP DSLAM Vendor (Gartner Group 2005)
- World's No 1 VDSL Equipment Vendor (Gartner Group 2005)

Reasons to use ZyXEL

- UK Based Tech Support- by ZyXEL Employees
- Research, Manufacturer, Develop our own products
- Leading Edge Technology
- Feature-rich Solution Portfolio
- Not just Networking.....Solutions

ZyXEL Communications UK Ltd
11 The Courtyard,
Eastern Road,
Bracknell
Berkshire RG12 2XB
United Kingdom

Tel: +44 (0)1344 303044
Fax: +44 (0)1344 303034

ZyXEL

Quick Setup Guide

version uk1.2

Prestige 660HW

ADSL Broadband Gateway Bundle

Should you have any queries regarding any ZyXEL equipment, please don't hesitate to contact our UK helpdesk:

email support@zyxel.co.uk
Technical enquiries 08707 555779

ZyXEL

1 Connections

If you wish to use the Wireless LAN for connectivity instead of Ethernet LAN, please refer to the G-202 Quick Start Guide and the Prestige User Manual located on the supplied CD.

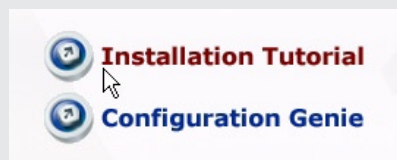
Step 1 To set up the Prestige, please run the supplied ZyXEL installation CD. A menu screen will automatically appear, click “setup” to continue. (If the CD does not auto run, please go to Start Menu, Run, <CD drive letter>:\autorun.exe and click ok).



Step 2 Click on “Multimedia Auto Provisioner (MAP)”.



Step 3 Click on “Installation Tutorial” for information on how to connect your Prestige.



The Tutorial will clearly illustrate how to fit all the connections together and power up your Prestige.

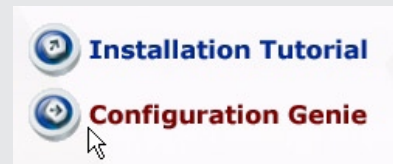
Please now continue to section 2.

2 Connecting to the Internet

If you haven't already done so, please power up the Prestige. Once that you have confirmed that the PWR/SYS, LAN (if you are using an Ethernet connection), WLAN and DSL indicators are illuminated, it's time to configure your Prestige.

Step 1 Please refer to section 1 Connections steps 1 and 2 before proceeding.

Step 2 Click on “Configuration Genie”.



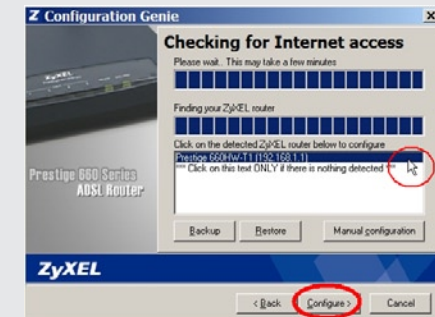
Step 3 The configuration genie will start, click on “configure” to continue.



Step 4 Please read the information in the white box before proceeding. Click on the tick box before clicking on “configure” to continue.



Step 5 The genie will now check for a connection to your Prestige. Once the process is complete, click on the appropriate product (Prestige 660HW-T1 192.168.1.1) and click on “configure”.



Step 6 Enter the details of your Internet account username and password into the corresponding boxes and click “configure” to continue (your internet account and username and password are provided by your Internet Service Provider).

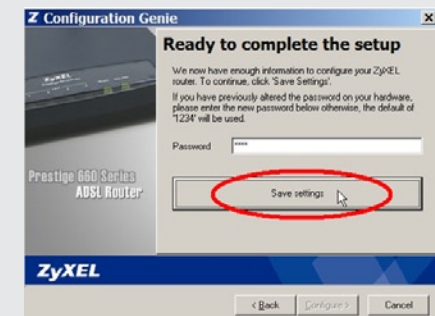
Internet Access details

☒ Configure ADSL settings

Account Username

Account Password

Step 7 Click “Save Settings” to complete your configuration.



The prestige will now restart, this can take up to 2 minutes. Visual confirmation that your Prestige is online can be determined by the INTERNET indicator showing GREEN. (If the connection to the Internet is still unavailable, please refer back to section 1 Connections and repeat the Quick Start process).

Congratulations, your installation is now complete!