

# MethylFlash™ Methylated DNA Quantification Kit (Fluorometric)

Base Catalog # P-1035

## PLEASE READ THIS ENTIRE USER GUIDE BEFORE USE

**Uses:** The MethylFlash™ Methylated DNA Quantification Kit (Fluorometric) is suitable for detecting global DNA methylation status using DNA isolated from any species such as mammals, plants, fungi, bacteria, and viruses in a variety of forms including but not limited to cultured cells, fresh and frozen tissues, paraffin-embedded tissues, plasma/serum samples, and body fluid samples. This kit is particularly suitable for samples only available in small amounts such as laser capture microdissection samples and embryos.

**Input DNA:** The amount of DNA for each assay can be 20-200 ng. For optimal quantification, the input DNA amount should be 100 ng, as methylated DNA varies from tissue to tissue and can be less than 1% of total DNA in some species.

**Starting Materials:** Starting materials can include various tissue or cell samples such as cells from flask or microplate cultured cells, fresh and frozen tissues, paraffin-embedded tissues, plasma/serum samples, body fluid samples, etc.

**Internal Control:** Both negative and positive DNA controls are provided in this kit. A standard curve can be performed (range: 0.2 to 10 ng) or a single quantity of methylated DNA can be used as a positive control. Because global methylation can vary from tissue to tissue, and from normal and diseased states, it is advised to run replicate samples at different DNA concentrations to ensure that the signal generated falls within range of the microplate reader used. This kit will allow the user to quantify an absolute amount of methylated DNA and determine the relative methylation states of two different DNA samples.

**Precautions:** To avoid cross-contamination, carefully pipette the sample or solution into the strip wells. Use aerosol-barrier pipette tips and always change pipette tips between liquid transfers. Wear gloves throughout the entire procedure. In case of contact between gloves and sample, change gloves immediately.

## KIT CONTENTS

Component	48 Assays Cat. #P-1035-48	96 Assays Cat. #P-1035-96	Storage Upon Receipt
<b>MF1</b> (10X Wash Buffer)	14 ml	28 ml	4°C
<b>MF2</b> (Binding Solution)	5 ml	10 ml	RT
<b>MF3</b> (Negative Control, 20 µg/ml)*	10 µl	20 µl	-20°C
<b>MF4</b> (Positive Control, 20 µg/ml)*	10 µl	20 µl	-20°C
<b>MF5</b> (Capture Antibody, 1000 µg/ml*)	4 µl	8 µl	4°C
<b>MF6</b> (Detection Antibody, 400 µg/ml)*	8 µl	16 µl	-20°C
<b>MF7</b> (Enhancer Solution)*	8 µl	16 µl	-20°C
<b>MF8</b> (Fluoro Developer)*	8 µl	16 µl	-20°C
<b>MF9</b> (Fluoro Enhancer)*	8 µl	16 µl	4°C
<b>MF10</b> (Fluoro Dilutor)	4 ml	8 ml	RT
8-Well Assay Strips (With Frame)	6	12	4°C
User Guide	1	1	RT

\* Spin the solution down to the bottom prior to use.

Note: The **MF3** Negative Control is an unmethylated polynucleotide containing 50% of cytosine. The **MF4** Positive Control is a methylated polynucleotide containing 50% of 5-methylcytosine.

## SHIPPING & STORAGE

The kit is shipped in three parts: the first part at ambient room temperature, and the second and third parts on frozen ice packs at 4°C.

Upon receipt: (1) Store **MF3**, **MF4**, **MF6**, **MF7**, and **MF8** at -20°C away from light; (2) Store **MF1**, **MF5**, **MF9**, and **8-Well Assay Strips** at 4°C away from light; (3) Store **MF2** and **MF10** at room temperature away from light.

All components of the kit are stable for 6 months from date of shipment, when stored properly.

Note: Check **MF1** (10X Wash Buffer) contains salt precipitates before use. If so, briefly warm at room temperature or 37°C and shake the buffer until the salts are re-dissolved.

## MATERIALS REQUIRED BUT NOT SUPPLIED

- Adjustable pipette, multi-channel recommended
- Aerosol resistant pipette tips
- Fluorescence microplate reader capable of reading fluorescence at excitation 530 and emission 590
- 1.5 ml microcentrifuge tubes

- Incubator for 37°C incubation
- Plate seal or Parafilm M
- Distilled water
- 1X TE buffer pH 7.5 to 8.0
- 1X PBS pH 7.2 to 7.5
- Isolated DNA of interest

## GENERAL PRODUCT INFORMATION

**Quality Control:** Each lot of the MethylFlash™ Methylated DNA Quantification Kit (Fluorometric) is tested against predetermined specifications to ensure consistent product quality. Epigenetek guarantees the performance of all products in the manner described in our product instructions.

**Product Warranty:** If this product does not meet your expectations, simply contact our technical support unit or your regional distributor. We also encourage you to contact us if you have any suggestions about product performance or new applications and techniques.

**Safety:** Suitable lab coat, disposable gloves, and proper eye protection are required when working with this product.

**Product Updates:** Epigenetek reserves the right to change or modify any product to enhance its performance and design. The information in this User Guide is subject to change at any time without notice. Thus, only use the User Guide that was supplied with the kit when using that kit.

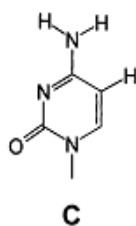
**Usage Limitation:** The MethylFlash™ Methylated DNA Quantification Kit (Fluorometric) is for research use only and is not intended for diagnostic or therapeutic application.

**Intellectual Property:** The MethylFlash™ Methylated DNA Quantification Kit (Fluorometric) and methods of use contain proprietary technologies by Epigenetek.

## A BRIEF OVERVIEW

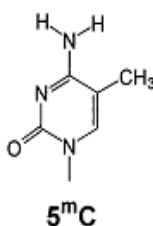
DNA methylation occurs by the covalent addition of a methyl group at the 5-carbon of the cytosine ring by DNA methyltransferases, resulting in 5-methylcytosine (5-mC). In somatic cells, 5-mC is found almost exclusively in the context of paired symmetrical methylation of the dinucleotide CpG, whereas in embryonic stem (ES) cells, a substantial amount of 5-mC is also observed in non-CpG contexts. The biological importance of 5-mC as a major epigenetic modification in phenotype and gene expression has been recognized widely. For example, global decrease in 5-mC content (DNA hypomethylation) is likely caused by methyl-deficiency due to a variety of environmental influences, and has been proposed as a molecular marker in multiple biological processes such as cancer. It has been well demonstrated that the decrease in global DNA methylation is one of the most important characteristics of cancer. Thus, the quantification of 5-mC content or global methylation in cancer cells could provide very useful information for detection and analysis of this disease.

Quite recently, a novel modified nucleotide, 5-hydroxymethylcytosine (5-hmC) has been detected to be abundant in mouse brain and embryonic stem cells. In mammals, it can be generated by oxidation of 5-methylcytosine, a reaction mediated by the Tet family of enzymes and Dnmt proteins. It is a hydroxylated and methylated form of cytosine



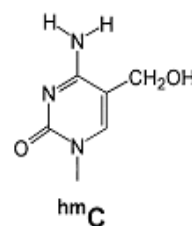
**Unmethylated DNA**

T-C-G-T-C-G-A-C-G



**Methylated DNA**

T-<sup>m</sup>C-G-T-<sup>m</sup>C-G-A-<sup>m</sup>C-G



**Hydroxymethylated DNA**

T-<sup>hm</sup>C-G-T-<sup>hm</sup>C-G-A-<sup>hm</sup>C-G

The broader functions of 5-hmC in epigenetics are still a mystery today. However, a line of evidence does show that 5-hmC plays a role in DNA methylation structures and patterns. Because of the presence of both 5-mC and 5-hmC in DNA with possibly different functions, it is important to determine the contents of these two modified nucleotides and their ratios in different cell types and in different compartments of the genome of mammals. It is particularly important to identify that in healthy and diseased human cell/tissues, the epigenetic change at the DNA level is due to methylation or hydroxymethylation. Several chromatography-based techniques such as HPLC, TLC mass spectrometry are used for detecting 5-mC and 5-hmC. However these methods are time consuming and have low throughput with high costs. To address this problem, Epigentek offers the *MethylFlash*<sup>™</sup> Methylated DNA Quantification Kit (Fluorometric) to quantify 5-mC or methylated DNA. This kit is optimized for paired use with our *MethylFlash*<sup>™</sup> Hydroxymethylated DNA Quantification Kit for simultaneously quantifying both methylated and hydroxymethylated DNA, or for quantifying methylated DNA by itself. The kit has the following advantages and features:

- Fluorometric assay with easy-to-follow steps for convenience and speed. The whole procedure can be finished within 4 hours.
- Innovative kit composition enables background signals to be extremely low, which eliminates the need for plate blocking and allows the assay to be simple, accurate, reliable and consistent.
- High sensitivity, of which detection limit can be as low as 50 pg of methylated DNA.
- Optimized antibody and enhancer solutions allow high specificity to 5-mC, with no cross-reactivity to unmethylated cytosine and no or negligible cross-reactivity to hydroxymethylcytosine within the indicated concentration range of the sample DNA.
- Universal positive and negative controls are included, which are suitable for quantifying methylated DNA from any species.
- Strip microplate format makes the assay flexible: manual or high throughput analysis.

**References**

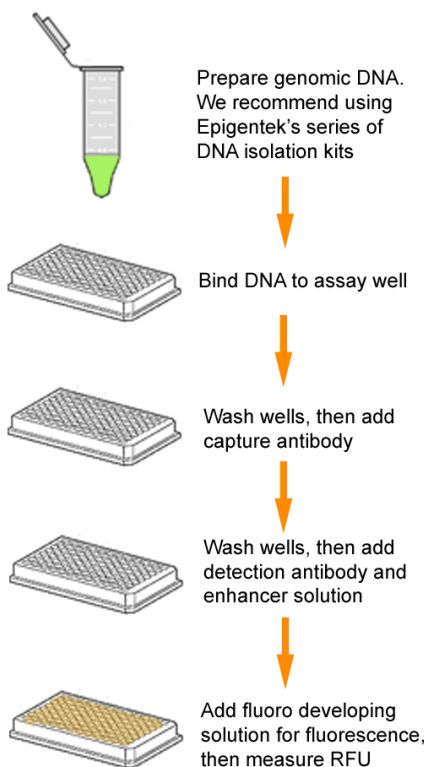
1. Robertson KD. *Nat Rev Genet.* 6:597-610, 2005.
2. Kriaucionis S et al: *Science.* 324: 929-930, 2009.
3. WYATT GR et al: *Biochem J.* 55:774-8, 1953.
4. Tahiliani M et al: *Science.* 324: 930-935, 2009.
5. Valinluck V et al: *Nucleic Acids Res.* 32: 4100-4108. 2004.
6. Valinluck V et al: *Cancer Res.* 67:946-50, 2007.
7. Jin SG et al: *Nucleic Acids Res.* 38: e125, 2010.

**PRINCIPLE & PROCEDURE**

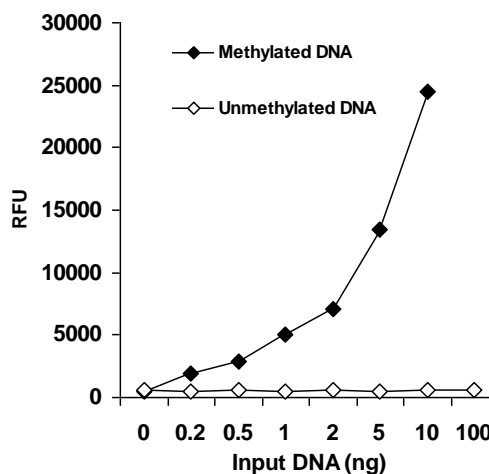
The *MethylFlash*<sup>™</sup> Methylated DNA Quantification Kit (Fluorometric) contains all reagents necessary for the quantification of global DNA methylation. In this assay, DNA is bound to strip wells that are specifically treated to have a high DNA affinity. The methylated fraction of DNA is detected using capture and detection antibody and then quantified fluorometrically by reading the RFU (relative



fluorescence units) with a fluorescence spectrophotometer. The amount of methylated DNA is proportional to the fluorescence intensity measured.



Schematic procedure of the MethylFlash™ Hydroxymethylated DNA Quantification Kit (Fluorometric).



Demonstration of high sensitivity and specificity of methylated DNA detection achieved by the MethylFlash™ kit. Synthetic unmethylated DNA (contains 50% of cytosine) and methylated DNA (contains 50% of 5-methylcytosine) were added into the assay wells at different concentrations and then measured with the MethylFlash™ Methylated DNA Quantification Kit (Fluorometric).

## PROTOCOL

For the best results, please read the protocol in its entirety prior to starting your experiment.

### Starting Materials

**Input DNA Amount:** DNA amount can range from 20 ng to 200 ng per reaction. An optimal amount is 100 ng per reaction. Starting DNA may be in water or in a buffer such as TE.

**DNA Isolation:** You can use your method of choice for DNA isolation. Epigentek offers a series of genomic DNA isolation kits for your convenience.

**DNA Storage:** Isolated genomic DNA can be stored at 4°C (short term) or -20°C (long term) until use.

### 1. Preparation of 1X Wash Buffer (MF1)

**48-Assay Kit:** Add 13 ml of **MF1** 10X Wash Buffer to 117 ml of distilled water (pH 7.2-7.5).

**96-Assay Kit:** Add 26 ml of **MF1** 10X Wash Buffer to 234 ml of distilled water (pH 7.2-7.5).

*Note: This **Diluted MF1** 1X Wash Buffer can now be stored at 4°C for up to six months. All other diluted solutions should be kept on ice at all times and should be discarded if not used within the same day.*

## **2. Preparation of Diluted Positive Control (MF4)**

Single Point Control Preparation: Dilute **MF4** Positive Control with 1X TE to 5 ng/μl (ex: 1 μl of **MF4** + 3 μl of TE).

Representative Standard Curve Preparation: First, dilute **MF4** to 10 ng/μl (ex: 5 μl of **MF4** + 5 μl of 1X TE). Then, further prepare five different concentrations with the 10 ng/μl diluted **MF4** and 1X TE into 0.5, 1.0, 2.0, 5.0, and 10.0 ng/μl according to the following dilution chart:

Tube	MF4 (10 ng/μl)	1X TE	Resulting MF4 Concentration
1	1.0 μl	19.0 μl	0.5 ng/μl
2	1.0 μl	9.0 μl	1.0 ng/μl
3	1.0 μl	4.0 μl	2.0 ng/μl
4	2.0 μl	2.0 μl	5.0 ng/μl
5	4.0 μl	0.0 μl	10.0 ng/μl

## **3. DNA Binding**

- Predetermine the number of strip wells required for your experiment. Carefully remove un-needed strip wells from the plate frame and place them back in the bag (seal the bag tightly and store at 4°C).
- Add 80 μl of **MF2** Binding Solution to each well.
- Add 1 μl of **MF3**, 1 μl of **Diluted MF4** (see note below), and 100 ng of your Sample DNA (1-8 μl) into the corresponding wells as shown in [Table 1](#) or [Table 2](#). Mix solution by gently tilting from side to side or shaking the plate several times. Ensure the solution coats the bottom of the well evenly.

*Note: (1) For a single point control, add 1 μl of **MF4** at a concentration of 5 ng/μl, as prepared in Step 2; For the standard curve, add 1 μl of **Diluted MF4** at concentrations of 0.5 to 10 ng/μl (see the chart in Step 2). The final amounts should be 0.5, 1, 2, 5 and 10 ng per well. (2) For optimal binding, sample DNA volume added should not exceed 8 μl. (3) To ensure that **MF3**, **Diluted MF4**, and sample DNA are completely added into the wells, the pipette tip should be placed into the **MF2** solution in the well and aspirated in/out 1-2 times.*

- Cover strip plate with plate seal or Parafilm M and incubate at 37°C for 90 min.
- Remove the **MF2** Binding Solution from each well. Wash each well with 150 μl of the **Diluted MF1** 1X Wash Buffer each time for three times. This can be done by simply pipetting **Diluted MF1** in and out of the wells.

## **4. Methylated DNA Capture**

- Dilute **MF5** (at 1:1000 ratio) with the **Diluted MF1**.
- Add 50 μl of the **Diluted MF5** to each well, then cover and incubate at room temperature for 60 min.
- Remove the **Diluted MF5** solution from each well.

- d. Wash each well with 150 µl of the **Diluted MF1** each time for three times.
- e. Dilute **MF6** (at 1:2000 ratio) with the **Diluted MF1**.
- f. Add 50 µl of the **Diluted MF6** to each well, then cover and incubate at room temperature for 30 min.
- g. Remove the **Diluted MF6** solution from each well.
- h. Wash each well with 150 µl of the **Diluted MF1** each time for four times.
- i. Dilute **MF7** (at 1:5000 ratio) with the **Diluted MF1**.
- j. Add 50 µl of the **Diluted MF7** to each well, then cover and incubate at room temperature for 30 min.
- k. Remove the **Diluted MF7** solution from each well.
- l. Wash each well with 150 µl of the **Diluted MF1** each time for five times.
- m. Wash each well with 150 µl of the 1X PBS one time.

### 5. Signal Detection

- a. Prepare **Fuoro-Development Solution** by adding 1 µl of **MF8** and 1 µl of **MF9** into each 500 µl of **MF10**.
- b. Add 50 µl of **Fuoro-Development Solution** into the wells and incubate at room temperature for 1 to 4 minutes away from light. The color in the standard wells containing the higher concentrations may turn pink during this period. Measure and read RFU (relative fluorescence units) on a fluorescence microplate reader at 530<sub>EX</sub>/590<sub>EM</sub> nm.

*If the strip well frame does not fit the microplate reader, transfer the solution to a standard 96-well microplate and read the RFU on a fluorescence microplate reader at 530<sub>EX</sub>/590<sub>EM</sub> nm.*

### 6. 5-mC Calculation

Relative Quantification: To determine the relative methylation status of two different DNA samples, simple calculation for percentage of 5-mC in total DNA can be carried out using the following formula:

$$5\text{-mC } \% = \frac{(\text{Sample RFU} - \text{MF3 RFU}) \div S}{(\text{MF4 RFU} - \text{MF3 RFU}) \times 2^* \div P} \times 100\%$$

**S** is the amount of input sample DNA in ng.

**P** is the amount of input positive control (**MF4**) in ng.

*\* 2 is a factor to normalize 5-mC in the positive control to 100%, as the positive control contains only 50% of 5-mC.*

Example calculation:

Average RFU of MF3 is 1000  
Average RFU of MF4 is 31000  
Average RFU of Sample is 21000

S is 100 ng

P is 5 ng

$$5\text{-mC } \% = \frac{(21000 - 1000) \div 100}{(31000 - 1000) \times 2 \div 5} \times 100\% = 1.67\%$$

**Absolute Quantification:** To quantify the absolute amount of methylated DNA using an accurate calculation, first generate a standard curve and plot the RFU values versus the amount of **MF4** at each concentration point. Next, determine the slope (RFU/ng) of the standard curve using linear regression (*Microsoft Excel's* linear regression functions are suitable for such calculation) and the most linear part (at least 4 concentration points including 0 point) of the standard curve for optimal slope calculation. Now calculate the amount and percentage of methylated DNA (5-mC) in total DNA using the following formulas:

$$5\text{-mC (ng)} = \frac{\text{Sample RFU} - \text{MF3 RFU}}{\text{Slope} \times 2^*}$$

$$5\text{-mC } \% = \frac{5\text{-mC Amount (ng)}}{S} \times 100\%$$

**S** is the amount of input sample DNA in ng.

*\* 2 is a factor to normalize 5-mC in the positive control to 100%, as the positive control contains only 20% of 5-mC.*

Example calculation:

Average RFU of MF3 is 1000  
 Average RFU of sample is 21000  
 Slope is 6000 RFU/ng  
 S is 100 ng

$$5\text{-mC (ng)} = \frac{21000 - 1000}{6000 \times 2} = 1.67 \text{ ng}$$

$$5\text{-mC } \% = \frac{1.67}{100} \times 100\% = 1.67\%$$

## SUGGESTED STRIP WELL SETUP

**Table 1.** The suggested strip-well plate setup using a single point positive control in a 48-assay format (in a 96-assay format, Strips 7 to 12 can be configured as Sample). The controls and samples can be measured in duplicate.

Well #	Strip 1	Strip 2	Strip 3	Strip 4	Strip 5	Strip 6
A	MF3	MF3	Sample	Sample	Sample	Sample
B	MF4	MF4	Sample	Sample	Sample	Sample
C	Sample	Sample	Sample	Sample	Sample	Sample
D	Sample	Sample	Sample	Sample	Sample	Sample
E	Sample	Sample	Sample	Sample	Sample	Sample



<b>F</b>	Sample	Sample	Sample	Sample	Sample	Sample
<b>G</b>	Sample	Sample	Sample	Sample	Sample	Sample
<b>H</b>	Sample	Sample	Sample	Sample	Sample	Sample

**Table 2.** The suggested strip-well plate setup for standard curve preparation in a 48-assay format (in a 96-assay format, Strips 7 to 12 can be configured as Sample). The controls and samples can be measured in duplicate.

Well #	Strip 1	Strip 2	Strip 3	Strip 4	Strip 5	Strip 6
<b>A</b>	MF3	MF3	Sample	Sample	Sample	Sample
<b>B</b>	MF4 0.5 ng	MF4 0.5 ng	Sample	Sample	Sample	Sample
<b>C</b>	MF4 1 ng	MF4 1 ng	Sample	Sample	Sample	Sample
<b>D</b>	MF4 2 ng	MF4 2 ng	Sample	Sample	Sample	Sample
<b>E</b>	MF4 5 ng	MF4 5 ng	Sample	Sample	Sample	Sample
<b>F</b>	MF4 10 ng	MF4 10 ng	Sample	Sample	Sample	Sample
<b>G</b>	Sample	Sample	Sample	Sample	Sample	Sample
<b>H</b>	Sample	Sample	Sample	Sample	Sample	Sample

## TROUBLESHOOTING

Problem	Possible Causes	Suggestions
No signals for both the positive control and samples	Reagents are added incorrectly.	Check if reagents are added in the proper order and if any steps in the protocol may have been omitted by mistake.
	The well is incorrectly washed before DNA binding.	Ensure the well is not washed before adding positive control and samples.
	The bottom of the wells are not completely covered by the <b>MF2</b> Binding Solution.	Ensure the solution coats the bottom of the well by gently tilting from side to side or shaking the plate several times.
	Incubation time and temperature are incorrect.	Ensure the incubation time and temperature described in the protocol is followed correctly.
	Insufficient input materials.	Ensure that a sufficient amount of positive control and samples are added into the wells.
	Incorrect fluorescence reading.	Check if appropriate fluorescence wavelength (530 <sub>EX</sub> /590 <sub>EM</sub> nm) is used.
	Kit was not stored or handled properly.	Ensure all components of the kit were stored at the appropriate temperature and the cap is tightly capped after each opening or use.
No signal or weak signal in only the positive control wells	The positive control DNA is insufficiently added to the well in Step 3c.	Ensure a sufficient amount of positive control DNA is added.
	The <b>MF4</b> Positive Control is degraded due to improper storage conditions.	Follow the Shipping & Storage guidance in this User Guide for storage of <b>MF4</b> Positive Control.

High background present in the negative control wells	Insufficient washing of wells.	Check if washing recommendations at each step is performed according to the protocol.
	Contaminated by sample or positive control DNA.	Ensure the well is not contaminated from adding sample or positive control DNA accidentally or from using contaminated tips.
	Incubation time is too long.	The incubation time at Step 3d should not exceed 2 h.
	Over development of fluorescence.	Decrease the development time in Step 5b.
Large variation between replicate wells	Fluorescent reaction is not evenly occurring due to an inconsistency in pipetting time.	Ensure <b>MF8</b> Fluoro Developer is added at the same time between replicates or otherwise maintain a consistent timing in between each addition of solutions.
	Fluorescent reaction is not occurring evenly due to an inconsistent order of adding solutions.	Ensure all solutions, particularly <b>MF8</b> Fluoro Developer, are added in the same order each time as all other solutions.
	The solutions are not evenly added due to an inconsistency in pipetting volume.	Ensure the solution in each pipette tip is equal in the multi-channel pipette. Equilibrate the pipette tip in any solutions before adding them. Ensure the solutions, especially those with small volumes (e.g., 1 ul) are completely added into the wells.
	Solutions or antibodies were not actually added into the wells.	Do not allow the pipette tip to touch the outer edges or inner sides of the wells in order to prevent solutions from sticking to the surface.
	Did not sufficiently shake the solutions in the wells after adding sample or positive control at step 3c	Gently and evenly shake the plate frame across a flat surface so that the solutions in the wells are better distributed. Do not stir.
	Did not use the same pipette device throughout the experiment.	Use the same multi-channel pipette device throughout the entire experiment, as different pipette devices may have slight variations in performance.
Capture Antibody vial appears to be empty or insufficient in volume	Buffer evaporated due to the very small volumes, resulting in a higher concentrated antibody.	Add 1X PBS buffer into the Capture Antibody vial until you restore the correct, intended volume according to the Kit Contents described in this User Guide. Mix and centrifuge prior to use.

## RELATED PRODUCTS

### DNA Sample Preparation

- P-1003 FitAmp™ General Tissue Section DNA Isolation Kit
- P-1004 FitAmp™ Plasma/Serum DNA Isolation Kit
- P-1006 DNA Concentrator Kit
- P-1007 FitAmp™ Gel DNA Isolation Kit
- P-1009 FitAmp™ Paraffin Tissue Section DNA Isolation Kit
- P-1017 FitAmp™ Urine DNA Isolation Kit
- P-1018 FitAmp™ Blood and Cultured Cell DNA Extraction Kit

### Global DNA Methylation Quantification

- P-1034 MethylFlash™ Methylated DNA Quantification Kit (Colorimetric)
- P-1036 MethylFlash™ Hydroxymethylated DNA Quantification Kit (Colorimetric)
- P-1037 MethylFlash™ Hydroxymethylated DNA Quantification Kit (Fluorometric)

