



*Supplement for
HE400CCU310,
HE400DNTx14,
HE400PLC188*

**DeviceNet™
Implementation
Using
Horner Electric's
Conveyor Controllers**

**First Edition
26 February 1999**

SUP0286-01

KEEP WITH USER MANUAL

PREFACE

This supplement is provided for Horner Electric's Conveyor Controller Modules for use in a DeviceNet™ network.

Copyright (C) 1999 Horner Electric, Inc., 640 North Sherman Drive Indianapolis, Indiana 46201. All rights reserved. No part of this publication may be reproduced, transmitted, transcribed, stored in a retrieval system, or translated into any language or computer language, in any form by any means, electronic, mechanical, magnetic, optical, chemical, manual or otherwise, without the prior agreement and written permission of Horner Electric, Inc.

All software described in this document or media is also copyrighted material subject to the terms and conditions of the Horner Software License Agreement.

Information in this document is subject to change without notice and does not represent a commitment on the part of Horner Electric, Inc.

CsCAN™ is a registered trademark of Horner Electric, Inc.

DeviceNet™ is a registered trademark of Open DeviceNet Vendor Association, Inc. (OVDA)

For user manual updates, contact Horner Electric Advanced Products Group, Technical Support Division, at (317) 916-4274 or visit our website at www.heapg.com.

LIMITED WARRANTY AND LIMITATION OF LIABILITY

Horner Electric, Inc. ("HE") warrants to the original purchaser that Conveyor Controller Modules manufactured by HE are free from defects in material and workmanship under normal use and service. The obligation of HE under this warranty shall be limited to the repair or exchange of any part or parts which may prove defective under normal use and service within two (2) years from the date of manufacture or eighteen (18) months from the date of installation by the original purchaser whichever occurs first, such defect to be disclosed to the satisfaction of HE after examination by HE of the allegedly defective part or parts. THIS WARRANTY IS EXPRESSLY IN LIEU OF ALL OTHER WARRANTIES EXPRESSED OR IMPLIED INCLUDING THE WARRANTIES OF MERCHANTABILITY AND FITNESS FOR USE AND OF ALL OTHER OBLIGATIONS OR LIABILITIES AND HE NEITHER ASSUMES, NOR AUTHORIZES ANY OTHER PERSON TO ASSUME FOR HE, ANY OTHER LIABILITY IN CONNECTION WITH THE SALE OF THESE Conveyor Controller Modules. THIS WARRANTY SHALL NOT APPLY TO THESE Conveyor Controller Modules OR ANY PART THEREOF WHICH HAS BEEN SUBJECT TO ACCIDENT, NEGLIGENCE, ALTERATION, ABUSE, OR MISUSE. HE MAKES NO WARRANTY WHATSOEVER IN RESPECT TO ACCESSORIES OR PARTS NOT SUPPLIED BY HE. THE TERM "ORIGINAL PURCHASER", AS USED IN THIS WARRANTY, SHALL BE DEEMED TO MEAN THAT PERSON FOR WHOM THE Conveyor Controller Modules ARE ORIGINALLY INSTALLED. THIS WARRANTY SHALL APPLY ONLY WITHIN THE BOUNDARIES OF THE CONTINENTAL UNITED STATES.

In no event, whether as a result of breach of contract, warranty, tort (including negligence) or otherwise, shall HE or its suppliers be liable of any special, consequential, incidental or penal damages including, but not limited to, loss of profit or revenues, loss of use of the products or any associated equipment, damage to associated equipment, cost of capital, cost of substitute products, facilities, services or replacement power, down time costs, or claims of original purchaser's customers for such damages.

To obtain warranty service, return the product to your distributor with a description of the problem, proof of purchase, post paid, insured and in a suitable package.

ABOUT PROGRAMMING EXAMPLES

Any example programs and program segments in this manual or provided on accompanying diskettes are included solely for illustrative purposes. Due to the many variables and requirements associated with any particular installation, Horner Electric cannot assume responsibility or liability for actual use based on the examples and diagrams. It is the sole responsibility of the system designer utilizing Conveyor Controller Modules to appropriately design the end system, to appropriately integrate the Conveyor Controller Modules and to make safety provisions for the end equipment as is usual and customary in industrial applications as defined in any codes or standards which apply.

Note: The programming examples shown in this manual are for illustrative purposes only. Proper machine operation is the sole responsibility of the system integrator.

TABLE OF CONTENTS

PREFACE..... 2

LIMITED WARRANTY AND LIMITATION OF LIABILITY 3

ABOUT PROGRAMMING EXAMPLES 3

TABLE OF CONTENTS 4

CHAPTER 1: INTRODUCTION..... 6

 1.1 Scope 6

 1.2 Conveyor Controller Modules 6

 1.3 Networks..... 7

 1.3.1 Types of Networks Used with HE Conveyor Controller Modules..... 7

 1.5 Additional DeviceNet Information..... 8

 1.6 Before Getting Started..... 8

CHAPTER 2: DEVICENET IMPLEMENTATION.....10

 2.1 General.....10

 2.1.1 DeviceNet Features Supported Using HE Conveyor Controller Modules.....10

 2.1.2 Configuration and Programming / Software Requirements.....11

 2.1.3 Capabilities of HE Conveyor Controller Modules in a DeviceNet Network11

 2.2 Requirements to Integrate HE Conveyor Controller Modules in a DeviceNet Network12

CHAPTER 3: SETUP AND CONFIGURATION.....14

 3.1 Initial Procedures and Requirements14

 3.2 Configuration Procedures.....15

 3.2.1 Selecting a Controller15

 3.2.2 Network Configuration.....17

 3.2.3 Relative ID Addressing21

CHAPTER 4: OPERATION24

 4.1 DeviceNet Overview.....24

THIS PAGE INTENTIONALLY LEFT BLANK

CHAPTER 1: INTRODUCTION

1.1 Scope

This supplement covers the implementation of Horner Electric (HE) Conveyor Controller Modules in a DeviceNet network. Chapter One provides general information on HE's Conveyor Controller Modules and describes the capabilities of the modules in various networks including DeviceNet. Chapter Two covers the implementation of the Conveyor Controller Modules in a DeviceNet network. Chapter Three covers setup and configuration. Chapter Four provides operational information about an example network setup.

1.2 Conveyor Controller Modules

The HE Conveyor Controller Modules are primarily designed for use in conveyor applications or other similar applications. They control devices that are connected via a network. Table 1.1 lists the Horner Electric Conveyor Controller Modules.

| Horner Part Number | Description |
|---------------------------|--|
| HE400CCU310 | Conveyor Control Unit with 0.5 Amp Outputs |
| HE400DNTx14 | Micro PLC with Relay Outputs |
| HE400DNT188 | Micro PLC with High Current Motor Outputs |

1.3 Networks

1.3.1 Types of Networks Used with HE Conveyor Controller Modules

The HE Conveyor Controller Modules are used in two types of networks: CsCAN or DeviceNet.

- a. CsCAN is a licensed network protocol created by Horner Electric, Inc.
- b. DeviceNet is an open network protocol that was originally developed by Allen-Bradley. The DeviceNet specification is currently administered by the Open DeviceNet Vendor Association, Inc. (ODVA).

DeviceNet and CsCAN use Controller Area Network (CAN) protocol. However, they can not co-exist on the same physical CAN network.

The capabilities of the HE Conveyor Controller Modules vary in accordance with the type of network the modules are designed for. Table 1.2 lists the differences in the capabilities of the Conveyor Controller Modules when implemented into a DeviceNet *or* CsCAN network.

| Table 1.2 – Capabilities of Conveyor Controller Modules in a DeviceNet or CsCAN Network | | |
|---|------------------|--------------------|
| Capability | DeviceNet | CsCAN |
| Upload/Download Ladder Code over network. | No | Yes |
| Upload/Download firmware over network. | No | Yes |
| Ability to control the PLC and perform de-bugging. | No | Yes |
| a. Must directly upload/download programming into <i>each</i> individual device on network. | a. Yes | a. No |
| b. Permits the upload/download of programming for all devices on the network via one device. | b. No | b. Yes |
| Allows the use of slave devices made by various manufacturers. | Yes | No-Uses HE Slaves. |
| Uses Horner Electric's Cscape Software to configure and program the Conveyor Control Modules. Also uses Cscape Software to configure, program and download Ladder Code into the modules. | Yes | Yes |
| Provides for peer-to-peer communication | *No | Yes |
| * To provide for peer-to-peer communications in a DeviceNet network, the "Unconnected Message Manager" [UCMM] feature must be available. Currently, the HE Conveyor Controller Modules do <u>not</u> support the UCMM method of communication in a DeviceNet network. | | |

1.5 Additional DeviceNet Information

For more information on DeviceNet networks or the ODVA, visit the ODVA web site at www.odva.org.

1.6 Before Getting Started

a. Wiring diagrams, specifications, and other pertinent information for the HE Conveyor Controller Modules are covered in individual data sheets created for each module.

NOTES

CHAPTER 2: DEVICENET IMPLEMENTATION

2.1 General

Chapter Two covers the features and requirements of HE Conveyor Controllers in a DeviceNet network.

2.1.1 *DeviceNet Features Supported Using HE Conveyor Controller Modules*

It is important to determine the features that the HE Conveyor Controller Modules support when used in a DeviceNet network *before* programming, configuring, and setting up the network.

a. Communication Method

Although the DeviceNet Specification provides for two methods of communication, the HE Conveyor Controller Modules implement only *one* of the methods, which is referred to as the “**Predefined Master/Slave Connection Set.**” This method provides communications typically seen in a Master/Slave relationship and uses a “**DeviceNet Master/Slave**” protocol.

The other method of communication is through the use of the “**Unconnected Message Manager (UCMM)**”. The HE Conveyor Controller Modules do not currently support the UCMM method of communication.

b. Message Class / Message Priority

Both Explicit Messaging and I/O Connections are established using a message class known as “**Message Group 2 Only.**” In this message class, the message priority is determined solely by the network address of the individual nodes. The lower the node’s address, the higher its priority.

c. Types of Messages / Connections Supported

The “**Explicit Messaging**” and “**Polled Connection**” features are supported. The following terms are defined per the DeviceNet™ Specification, Release (2.0), Volume I: DeviceNet Communication Model and Protocol, Sections 1-4, 1-4.2., and 7-3.

Explicit Messaging: Used in typical request/response-oriented networks. Explicit Messages are used to command the performance of a particular task and to report the results of performing the task.

Polled Connection: Responsible for receiving the Master’s Poll Command and returning the associated response.

“Explicit Messaging” is used for the transfer of small amounts of infrequently accessed data such configurations or tuning.

The “Polled Connection” is used for data that is sent automatically between the slave and the DeviceNet Master (Scanner) without intervention. The DeviceNet Master sends a “**Polled Command**” to a DeviceNet Slave. The DeviceNet Slave produces or sends a “**Polled Response**” back to the DeviceNet Master. (The “**Polled Response**” consists of 16 bits [2 bytes] of data.) All HE Conveyor Controllers monitor (or “eavesdrop” on) “**Polled Response**” messages on the network. (See “**Polled Snooping**” in Section 2.1.1,item d.)

The HE Conveyor Controller Modules do not support “**Bit Strobed**”, “**Cyclic**” and “**Change-of-State**” connections.

d. Additional Feature available in HE Conveyor Controller Modules

A Horner Electric extension of the DeviceNet protocol known as “**Polled Snooping**” is also provided. Polled Snooping is totally non-intrusive to DeviceNet traffic. The HE Conveyor Controllers monitor (or “eavesdrop” on) all “**Polled Response**” messages on the network. The data in the “**Polled Responses**” is used by the ladder code program in each of the HE Conveyor Controller Modules. Their ladder code programs make decisions based on the “snooped” data. (See “**Polled Connection**” in Section 2.1.1, item c.)

As “**Polled Response**” messages are received by other Conveyor Controllers, the first 16 bits (2 bytes) of the response data are copied into their input map array indexed by the DeviceNet Node Address (MACID) of the transmitting node. Through a process called “**Mapping**,” any 16 bits of data within the Conveyor Controller Modules input map array can be selected to be copied into the %IG registers of the respective Conveyor Controller. These 16 %IG registers can then participate in the ladder code running in the HE Conveyor Controller Modules.

2.1.2 Configuration and Programming / Software Requirements

All configuration and ladder programming is performed through the use of Cscape™ Software. Cscape is a 32-bit Windows program that runs on a Personal Computer (PC) using the Windows 95, Windows 98 or Windows NT operating system. Cscape provides for a serial connection between the PC and the target module. See the *Cscape Software User Manual* (GFK-1630) for more information regarding the features and operation of Cscape.

Note: It is not currently possible to perform ladder code updates, operating firmware updates or other administration and control functions over a DeviceNet network. These function can only be performed by a direct serial connection between a PC running Cscape and each individual front panel serial port of the HE Conveyor Controller Modules.

2.1.3 Capabilities of HE Conveyor Controller Modules in a DeviceNet Network

The capabilities of the HE Conveyor Controller Modules vary in accordance with the type of network the modules are designed for. The following list indicates the capabilities of the HE Conveyor Controller Modules when implemented into a DeviceNet network.

- a. Allow the use of slave devices made by various manufacturers
- b. Must have programming directly uploaded/downloaded into *each* individual device on network.
- c. Must use Cscape Software to configure and program the Conveyor Control Modules. Must also use Cscape Software to configure, program and download Ladder Code into the modules.
- d. Can NOT upload/download Ladder Code or firmware over network
- e. Can NOT control the PLC and perform de-bugging.
- f. Can NOT permit the upload/download of programming for all devices on the network via one device.
- g. Can NOT provide for peer-to-peer communication

Note: To provide for peer-to-peer communications in a DeviceNet network, the “Unconnected Message Manager” [UCMM] feature must be available. Currently, the HE Conveyor Controller Modules do not support the UCMM method of communication in a DeviceNet network.

2.2 Requirements to Integrate HE Conveyor Controller Modules in a DeviceNet Network

The following requirements must be met to integrate HE Conveyor Controller Modules into a DeviceNet network and to establish communications with a DeviceNet Master.

a. DeviceNet Node Address (MACID)

In order to communicate with a DeviceNet Master, a unique MACID must be assigned to each node on the network. Valid DeviceNet MACIDs are within the range of 0 - 63 inclusive (one DeviceNet Master and 63 Slave Nodes).

b. DeviceNet Baud Rate

Each device connected to a DeviceNet network must be configured to operate at the same baud rate. The baud rate for the HE Conveyor Controller Modules is fixed at 125K baud. Therefore, *all* other devices on the network must also be configured to operate at 125K baud.

c. Polled Input Data Assembly

The HE Conveyor Controller Modules “consume” (or expect to receive) 16 bits (2 bytes) of data whenever a polled command is received. The 16 bits of data are stored in the Input Map array (at Index 64) in each Conveyor Controller Module.

d. Polled Output Data Assembly

After the poll command is received, the HE Conveyor Controller Modules “produce” (or send) 16 bits (2 bytes) of data to the DeviceNet Master as a response to a polled command.

NOTES

CHAPTER 3: SETUP AND CONFIGURATION

3.1 Initial Procedures and Requirements

1. Layout a DeviceNet scheme on paper and define I/O's, node address references, etc.

It is important that the initial DeviceNet network be properly designed at the front-end of the project and take in consideration any drops and nodes that will be added in the future. Haphazard additions of extra "drops" and nodes at a later date often cause problems. Unterminated drops can be tolerated on a DeviceNet network. Adding nodes later in the project can make configuration of the DeviceNet Master (and its associated PLC) much more difficult and prone to human error.

2. Configure the DeviceNet Master.

Consult the manufacturer's user guide for procedures to configure the master.

The following items are required for communication between a DeviceNet Master and HE Conveyor Controller Modules.

a. DeviceNet Node Address (MACID)

In order to communicate with a DeviceNet Master, a unique MACID must be assigned to each node on the network. Valid DeviceNet MACIDs are within the range of 0 - 63 inclusive (one DeviceNet Master and 63 Slave Nodes). **To setup the MACID for the HE Conveyor Controllers, use a small screwdriver to set the rotary encoder switch on the modules. Other slave devices on the network may need different procedures.** Consult the slave manufacturer's user manual for procedures to set the MACID.

b. DeviceNet Baud Rate (125Kbaud)

Each device connected to a DeviceNet network must be configured to operate at the same baud rate. The baud rate for the HE Conveyor Controller Modules is fixed at 125Kbaud. Therefore, *all* other devices on the network must also be configured to operate at 125Kbaud. **Because HE Conveyor Controller Modules are fixed at 125Kbaud, there is no action required by the user to set the baud rate. However, other slave devices on the network may need different procedures.** Consult the slave manufacturer's user manual for procedures.

c. Polled Input Data Assembly (Consumption Size)

The HE Conveyor Controller Modules “consume” (or expect to receive) 16 bits (2 bytes) of data whenever a polled command is received. The 16 bits of data are stored in the Input Map Array (at Index 64) in each Conveyor Controller Module. The process is called “Polled Snooping” and is described in 2.1.1 item d.

d. Polled Output Data Assembly (Production Size)

After the poll command is received, the HE Conveyor Controller Modules “produce” (or send) 16 bits (2 bytes) of data to the DeviceNet Master as a response to a polled command.

3.2 Configuration Procedures

The following procedures are used to configure a HE Conveyor Controller Module for use in a DeviceNet network. The configuration for the HE Conveyor Controller Module is accomplished using Cscape Software. **For the example configuration, the HE Conveyor Controller Module is a CCU310.**

Note: Other slave devices on the network may require different configuration procedures. Consult the slave manufacturer’s user manual for configuration procedures.

3.2.1 Selecting a Controller

1. Go to the Main Screen and press Controller. Select Configure.

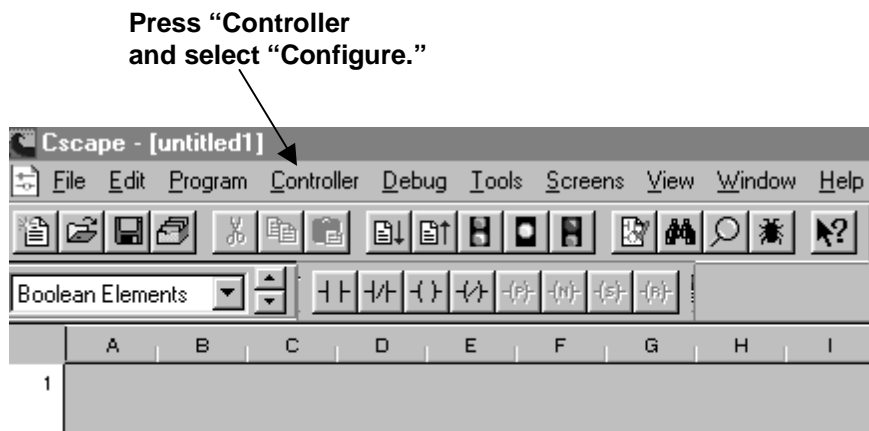


Figure 3.1 – Select Controller

2. The following screen appears. The IC300OCS100 is shown as the selected controller. In this configuration example, however, the desired controller is the **HE400CCU310**. Click the Config button located next to the IC300OCS100 slot.

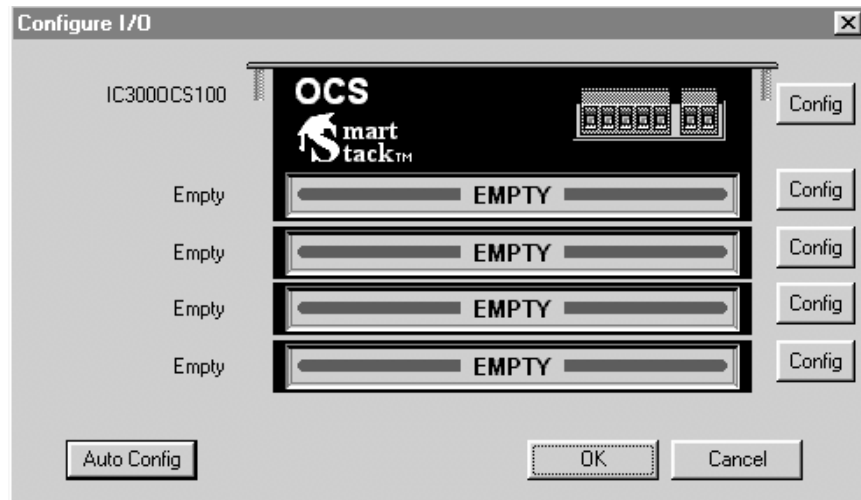


Figure 3.2 – Configure Controller Type Dialog

3. The following screen appears. Select the desired controller from the pull-down menu, and press OK.

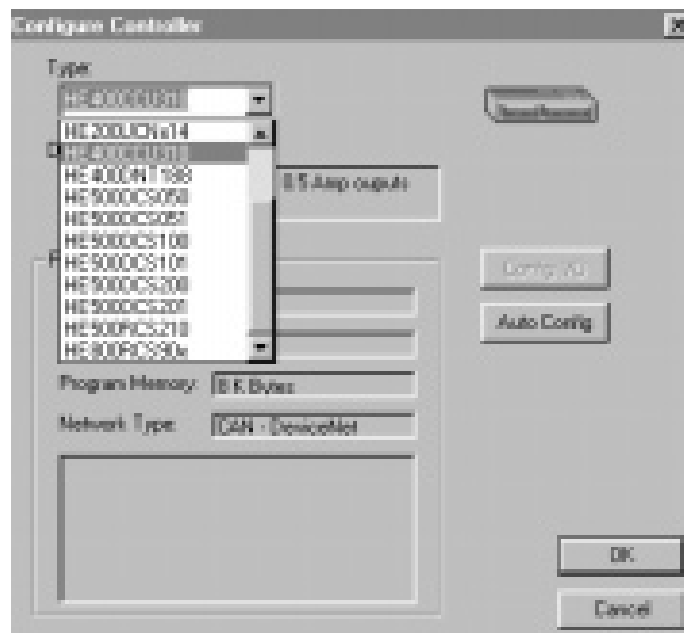


Figure 3.3 – Selecting a Controller

4. The following screen appears. The desired controller is now selected. Press the **X** in the upper-right corner of the Configure I/O screen to close.

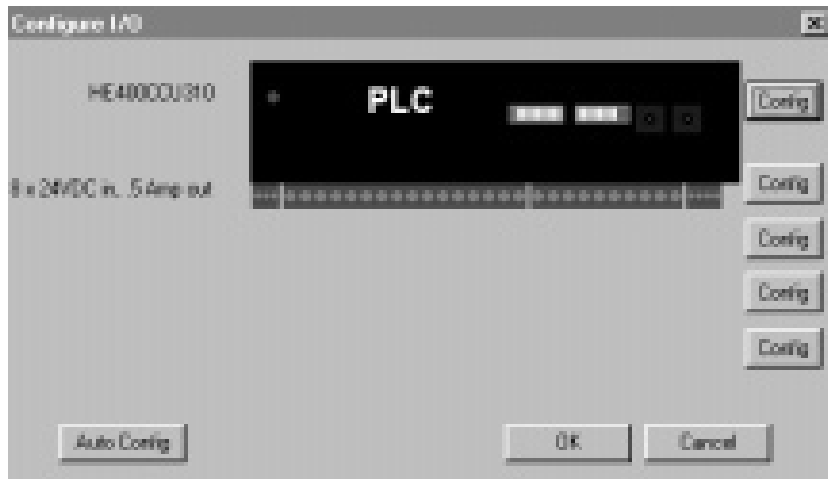


Figure 3.4 – HE400CCU310 Selected

3.2.2 Network Configuration

5. From the Main Screen, press Program and select “Network Config.”

Press Program. Select “Network Config.”

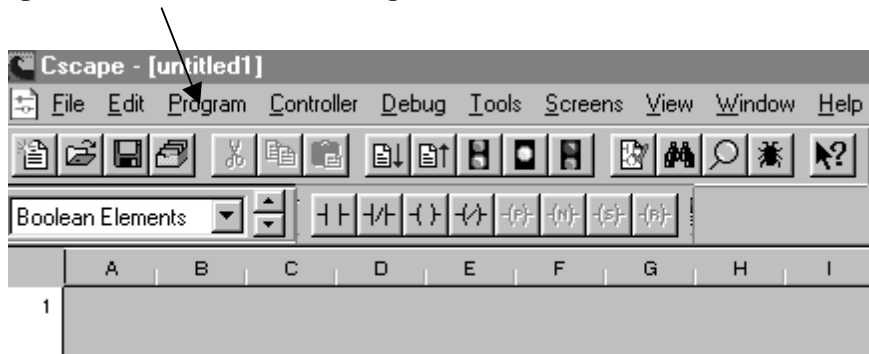


Figure 3.5 – HE400CCU310 Selected

6. The following screen appears.

- a. The **Point** node is the HE Conveyor Controller that is being configured.
- b. The **Source** node represents a different HE Conveyor Controller on the network than the **Point** node.
- c. The **Net ID** address is that of the **Source** node.

Configuring this screen allows the Point node to receive data from:

- a. Various **Source** nodes' **%QG** registers and to have the data sent to the **Point** node's **%IG** registers. (See Steps #6 through #8.)
- b. The DeviceNet **Master** (using a special index address of "64") and to have the data sent to the **Point** node's **%IG** registers. (See Steps #9 through #11.)

Example Configuration: This example depicts a Point node receiving data from a Source Node (Refer to Figure 3.12.)

In this example configuration, the user wants the **%QG8** data from a **Source** node (with a **Net ID of 5**) to be sent to the **Point** node's **%IG2** register.

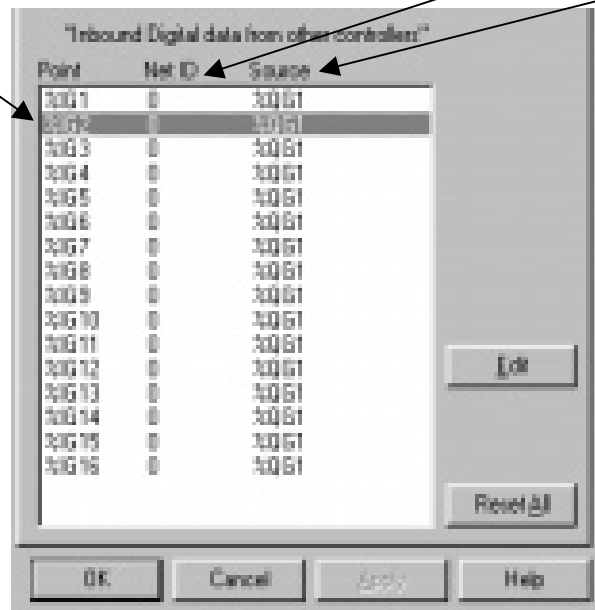
Note: An example of a Point node receiving data from a DeviceNet Master is illustrated later in Step #9.

To edit the screen and select the appropriate **%IG** and **%QG** registers and **Net ID**, use the mouse arrow and double-click on the desired **Point** node's **%IG2** register.

1. The user needs to edit this screen to achieve the following transfer of data:

The user wants the **%QG8** register data from the **Source node** to be sent to the **Point node's %IG2** register.

The **Source** node has a **Net ID** address of **5**.



Network ID: Represents the node address of the **Source** node, which is a *different* HE Conveyor Controller on the network than the **Point**.

The user wants to edit this screen so that the **Source** node's **%QG8** data is sent to the **Point** node's **%IG2** register.

Figure 3.6 – Network Configuration Screen (Before Configuration Parameters are Set)

7. The following screen appears. Using pull-down menus, select the node address of the **Source** and the %QG register from which the data is to be obtained. *In this example, the data is to be obtained from a Conveyor Controller (Source) with a Net ID of 5, and the information is to be obtained from %QG8 within the Source.* Press OK.

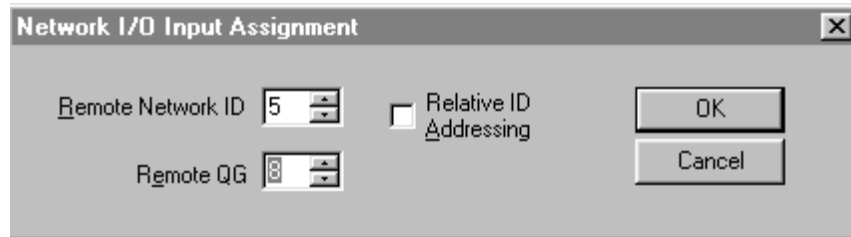


Figure 3.7 – Network I/O Input Assignment Screen

8. The following screen indicates that the **Source** node's %QG8 data is to be sent to the **Point** node's %IG2 register. The **Source** node's **Net ID** is 5.

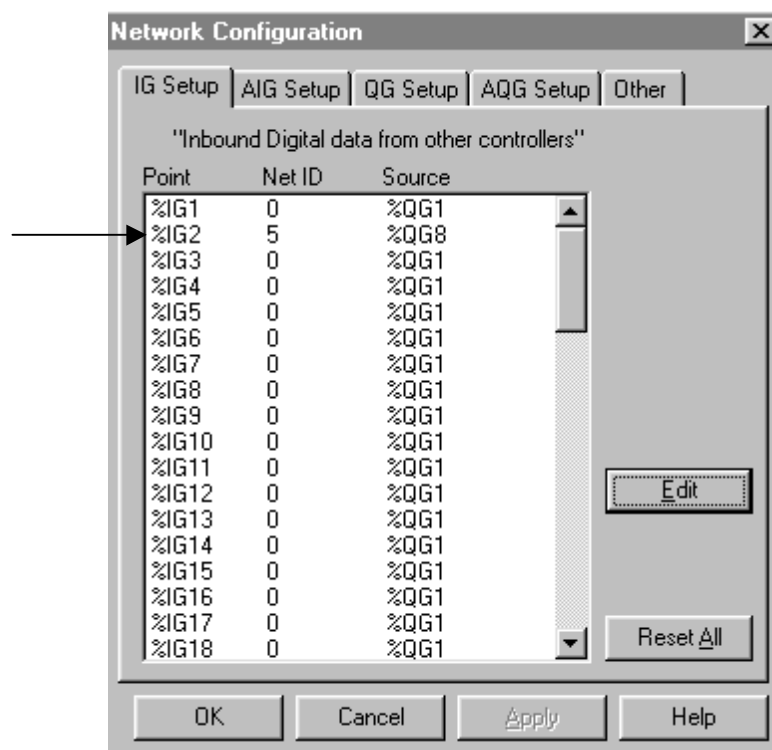


Figure 3.8 – Network Configuration Screen
(Shows Status of Example Configuration %IG2)

9. Steps #6 through #8 illustrated an example of the **Point** node receiving data from a **Source** Node (HE Conveyor Controller Module).

The following **example** illustrates how the **Point** node receives data from the **DeviceNet Master**. *The DeviceNet Master uses special index address of "64."*

Example Configuration:

In this example configuration, the user wants the **%QG1** data from a **DeviceNet Master** (with a **special Net ID of 64**) to be sent to the **Point** node's **%IG1** register.

To edit the screen and select the appropriate %IG and %QG registers and Net ID, use the mouse arrow and double-click on the desired **Point** node's **%IG1** register.

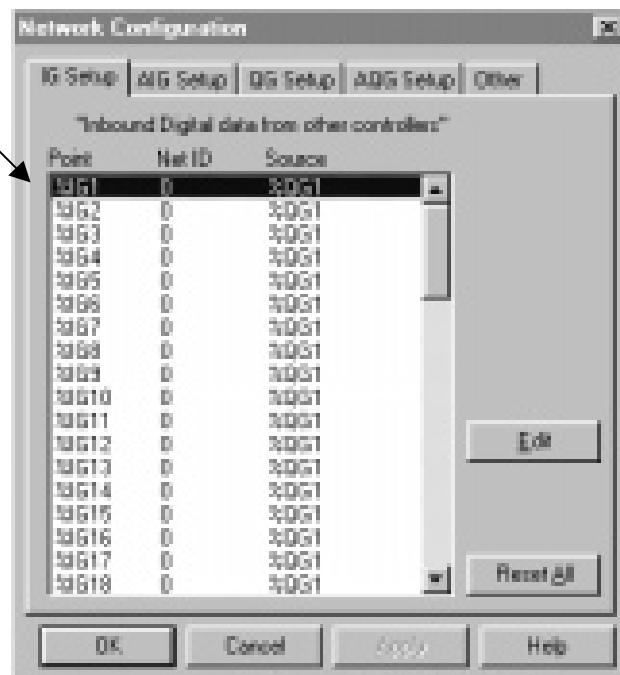


Figure 3.9 – Network Configuration Screen (Before Parameters have been set.)

10. The following screen appears. Using pull-down menus, select the node address of the **DeviceNet Master** and the %QG register from which the data is to be obtained. *In this example, the data is to be obtained from a DeviceNet Master (Source) with a special Net ID of 64, and the information is to be obtained from %QG1 within the Source.* Press OK.

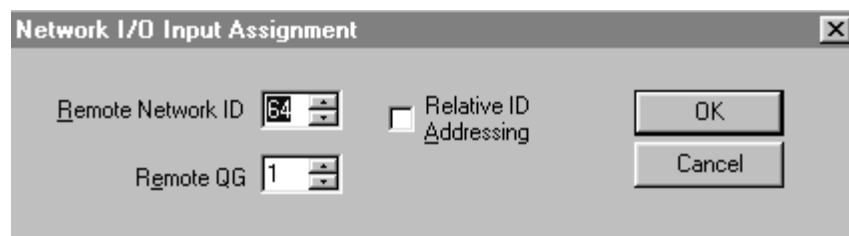
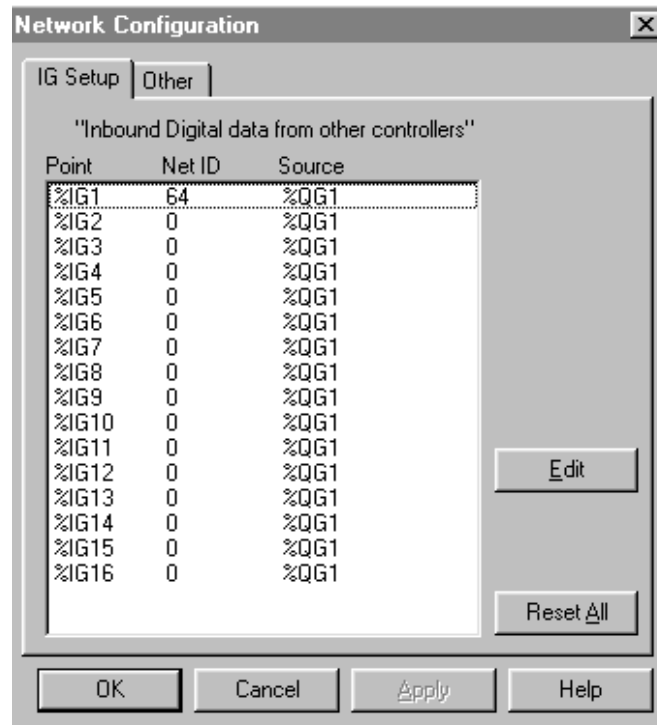


Figure 3.10 – Selecting the DeviceNet Master's Special Address of "64."

11. The following screen appears. It indicates that the **Point** node's %IG1 register is to receive data from the **DeviceNet Master's** %QG1 register (Source). The **DeviceNet Master** has a special **Net ID** of "64."



**Figure 3.11 – Network Configuration Screen
(Shows Status of Example Configuration %IG1)**

3.2.3 Relative ID Addressing

9. The **Relative ID Addressing** feature simplifies the configuration process involving a *number* of HE Conveyor Controller Modules that are located on different conveyor segments. If *each* Conveyor Controller is going to be configured such that:

- The **same %IG registers** are going to be configured in *each* Point node to store specific data sent from the Source nodes AND
- The **same %GQ registers** of the Source nodes are going to be configured to send specific data to the Point node's %IG registers, THEN
- The **Relative ID Addressing** feature allows a single ladder file (which includes logic, configuration, and the network map) to be used by a number of conveyor controllers on the network, which are performing the same functions.

Example: Configuration using Relative ID Addressing Feature

In this configuration example, the Relative ID Addressing feature is selected. In Figure 3.9, the user wants the **Point** node to be configured such that the **Source** nodes (on conveyor segments located just before and after the **Point** node) send the data from the same %QG registers to the same %IG registers as in the **Point** node. (The process is described in more detail in Section 3.2.2.)

Note that **Source -1** is one Net ID address *lower* than the Point's Net ID address. Also note that **Source+1** and **Source +2** Net ID addresses are *greater* than the Point's Net ID address by 1 and 2 respectively.

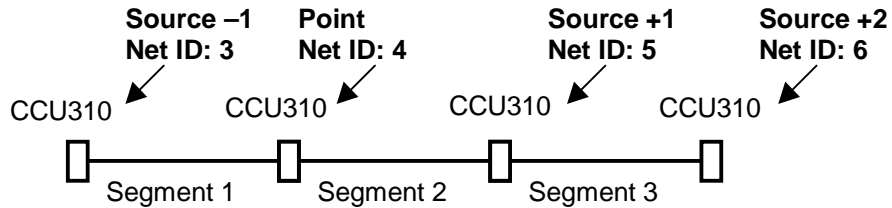


Figure 3.12 – Example Conveyor Line

In Figure 3.10, the user has clicked on the box to select “Relative ID Addressing.” The user has typed in “-1” for the Remote Network ID. This means that the Net ID of the Source is relative to the Point's Net ID by an *offset of minus one*. Press OK.

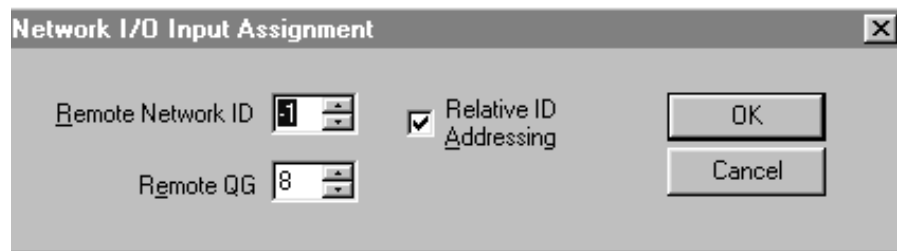


Figure 3.13 – Network Configuration Screen

The following screen appears. The screen indicates that the Point node is to receive data from two Source nodes that are:

- a. One Net ID address **greater** than (+1) the Point's Net ID address, and
- b. One Net ID address **less** than (-1) the Point's Net ID address.

The screen also depicts that the Point node's %IG1 register is to receive data from the +1 Source's %QG6 register. The Point node's %IG2 register is to receive data from the -1 Source's %QG8 register.

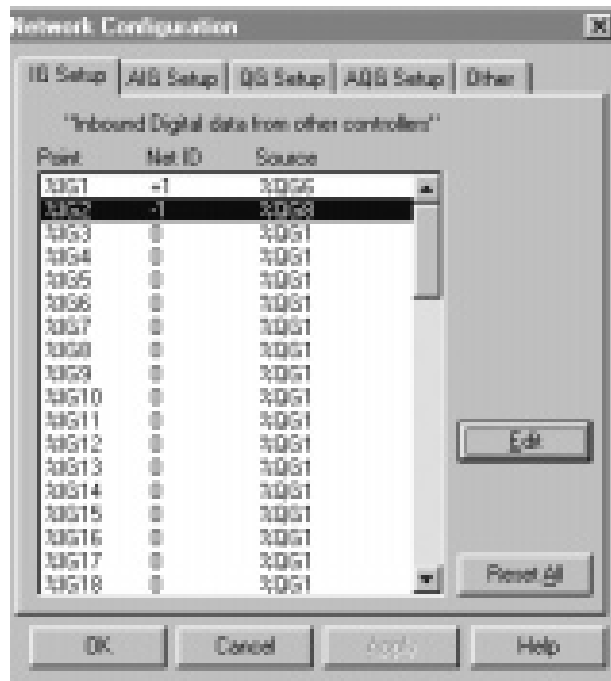


Figure 3.13 – Network Configuration Screen (Shows Status of Relative ID Addressing)

CHAPTER 4: OPERATION

4.1 DeviceNet Overview

Chapter Four describes an example DeviceNet network using HE Conveyor Controller Modules (CCU310) in a conveyor application. Refer to Figure 4.1.

1. The **DeviceNet Network** allows a DeviceNet Master to communicate with slave nodes over a common bus. Figure 4.1 depicts a DeviceNet network using CCU310 devices. Conveyors are typically laid out in segments. Each segment typically uses a HE Conveyor Controller (i.e., CCU310) to control a specific segment and to communicate with HE Conveyor Controllers located on other segments of the conveyor. The CCU310 also communicates with the DeviceNet Master. A total of 64 nodes is available on the network including the DeviceNet master. Up to 63 slave devices can be used.

In the example configuration, two segments of a conveyor operation are shown. Each segment has a HE Conveyor Controller Module (CCU310) and one other slave device connected to it.

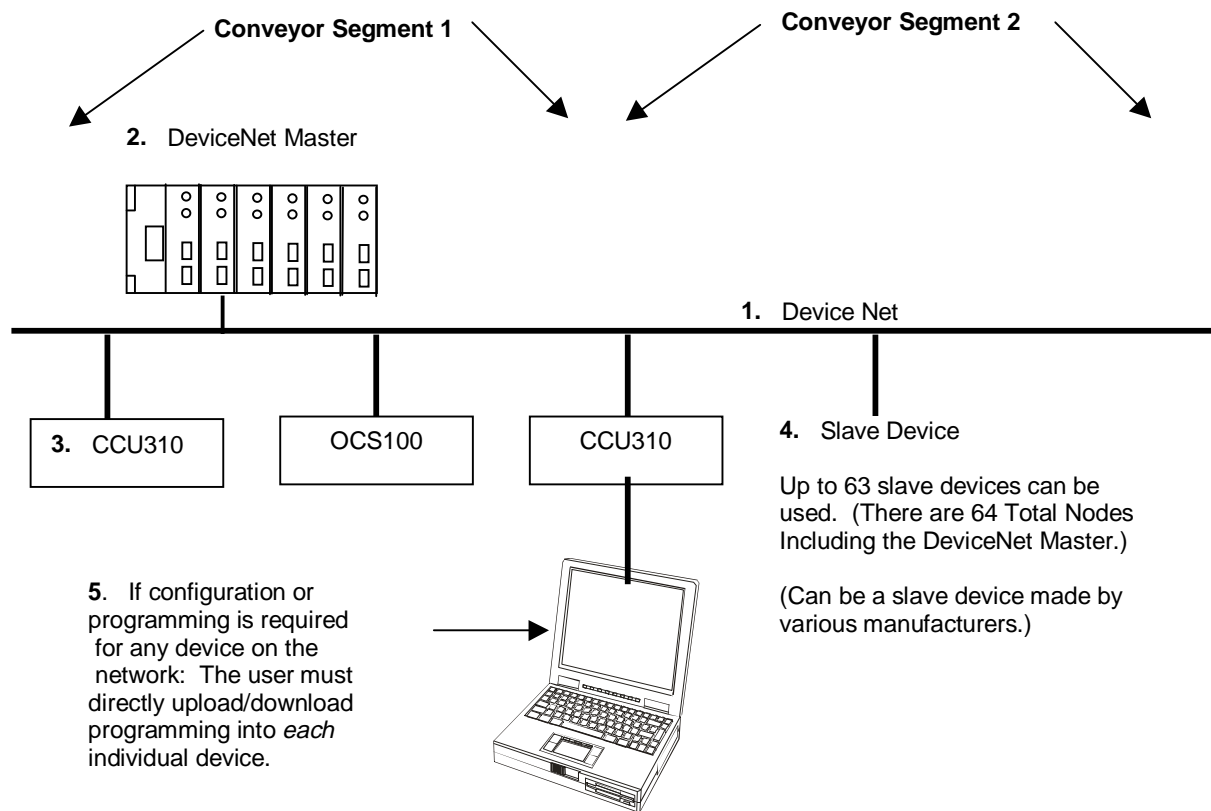


Figure 4.1 – Using HE Conveyor Controller Modules in a DeviceNet Network

2. The **DeviceNet Master** sends two types of messages to the slaves. The first message is an **Explicit Message**, which is used for the transfer of small amounts of infrequently accessed data such as configuration or tuning. The second type of message is a **Polled Connection**. It is used for data that is sent automatically between the slave and the DeviceNet Master (Scanner) without intervention. When the slave responds with a "Polled Response," all of the HE Conveyor Controller Modules "snoop" the data as described in item 3.

3. The DeviceNet Master sends data *to* the **HE Conveyor Controllers** ("Polled Commands") and receives data *from* the **HE Conveyor Controllers** ("Polled Responses"). Using a feature called "**Polled Snooping**," all **HE Conveyor Controllers** (i.e., CCU310) monitor (or "eavesdrop" on) the "Polled Response" messages on the network. "Polled Snooping" is non-intrusive to DeviceNet traffic

The data in the "Polled Responses" can be used by the ladder code program in each of the HE Conveyor Controller Modules (i.e., CCU310). The individual ladder code programs of the HE Conveyor Controllers can then make decisions based on the "snooped" data.

Each of these processes are described as follows:

DeviceNet Master sends data to a HE Conveyor Controller, and the HE Conveyor Controller responds; The other HE Conveyor Controllers in the network "snoop" the data, which is sent into their %IG registers via "Mapping":

a. The DeviceNet Master sends a "Polled Command" to up to 63 DeviceNet Slaves on the network. Each of the Slaves that were sent the "Polled Command" produces or sends a "Polled Response" back to the DeviceNet Master. (The "Polled Response" consists of 16 bits [2 bytes] of data.). All other **HE Conveyor Controllers** (i.e., CCU310) snoop (or "eavesdrop" on) all "Polled Response" messages on the network.

b. The "Polled Command" data that is sent from the DeviceNet Master to specific HE Conveyor Controllers is sent to a special address or "storage location" in the individual HE Conveyor Controller's **Input Map Array** at Index 64. The Input Map Array has sixty-five addresses or "storage locations" (0-64). There is an address for each of the 64 nodes on the network.

c. As "Polled Response" messages are received by the other HE Conveyor Controllers, the first 16 bits (2 bytes) of the response data are copied into each of the Conveyor Controller's Input Map Array.

d. Through a process called "**Mapping**," any 16 bits of data within each Controller's Input Map Array can be selected to be copied into its %IG registers. (The user determines the selection of the 16 bits via the configuration process.) These 16 %IG registers can then participate in the ladder code running in the HE Conveyor Controller Modules. "Mapping" occurs at the start of every scan.

The Ladder Code sends data to the DeviceNet Master via a "Polled Response" message; Other HE Conveyor Controllers "snoop" which is sent to their Input Map Arrays:

a. Depending upon how its written, the ladder code can respond to the "Polled Responses received by the HE Conveyor Controller Modules. By sending "global data" (%QG) to the DeviceNet Master, this output data is "snooped" by all HE Conveyor Controllers on the network and is placed into their **Input Map Arrays**. For example, if one segment of the conveyor stops momentarily, the ladder code can be written such that the rest of the conveyor line is "notified" and can respond appropriately. The user can configure the HE Conveyor Controller Modules to receive the data in the %QG registers of other HE Conveyor Controller Modules or the DeviceNet Master.

For a step-by-step explanation on how to configure the HE Conveyor Controller Modules (i.e.,CCU310) and to use a feature known as **Relative ID Addressing**, refer to Sections 3.2.2 and 3.2.3 in Chapter 3.

4. Up to 63 **DeviceNet Slaves** can be used in the network. There are 64 total nodes including the DeviceNet Master. The slaves can be made by various manufacturers. In order to communicate with a DeviceNet Master, a unique DeviceNet Node Address (MACID) must be assigned to each node on the network. . HE Conveyor Controller Modules (i.e., CCU310) have a fixed baud rate of 125Kbaud. Thus, *all* nodes on the network must be set at the same baud rate of 125Kbaud.
5. To install upgrades or perform configuration, the user must directly upload/download programming into *each* individual device.