

Continuous Ink Supply System
for
EPSON Stylus CX4200
Installation Instruction

For XM Prefilled Version

With Auto Reset Chips

This Version of the Continuous Ink Flow System comes with Prefilled Cartridges and Auto Reset Chips. You just need to fill the Reservoir bottles and print! The whole operation is very easy. It's really an effective tool to save your money.

CIS for EPSON Stylus CX4200 Instruction

Thank you for purchasing XM Continuous Ink Supply System. We appreciate your support and will try our best to make your experience with our products a pleasant one. Printing has been a different experience ever since you installed XM Continuous Ink Supply system on your own printer. Just imagining being able to print without regard to the ink level in those expensive little cartridges.

Please take your time installing XM Continuous Ink Supply system. Do not remove your old cartridge until you have the XM CIS system primed and ready to install (to prevent the drying of heads). In addition, make sure you are getting perfect nozzle checks before installing the XM CIS system. The XM CIS system won't be able to work properly if the nozzles are previously clogged.

Most people get a perfect nozzle check the first time after installing the XM Continuous Ink Supply system; others may need to run two or three cleaning cycles or let the printer sit for a while before they get the perfect results.

1、 General Guide:

1) Components

A、 CIS system 1 set
D、 Refill Kit 4 pcs

B、 Air filters 4pcs
E、 Instruction CD 1pc

C、 Support Arm 1 set



2) Opening box inspection

- a、 Check whether all the accessories are ready.
- b、 Check whether there's leakage of CIS System, whether some tubes have been separated from CISS. If there is, please kindly to contact the local dealer.
- C、 Check whether there is air space in the tube. If the length of air space is more than 20cm, please clean the printer head for 2 or 3 times before printing.

Printer testing:

- 1) Check whether the printer is in normal condition, like mechanical status, lubrication status etc.
- 2) Print testing lines to ensure the printing head is good condition.
- 3) Print pictures to see whether the printing image is ok.

Installation Procedures:

- 1) First step



Put the CISS on the left side of the printer. In the meantime place all the tubes at correct position.



Pull out the small rubber plug from the air hole as above picture shown.



Place 4pcs of air filters into air holes, the thicker side is down into tank.

2、 Second step: Remove the Cartridge



A



B



C

1) Press the “ink cartridge replace button” (Picture A) on the printer to move the cartridge to the cartridge remove position (Pic.B)

2) Unplug the power connector at the back of the printer (Pic.C)

3、 Step 3.

1) Remove the spring on the left of cartridges car. (Pic.A)

2) Open the cartridge cover to certain angle (Pic.B); Then use a small screwdriver to loosen the cartridge cover, then remove it. (Pic.C-F)



A



B



C



D



E



F

4、 Step 4.

- 1) Remove old cartridges in the printer (Pic A);
- 2) Insert the CIS cartridges into the cartridge car (Pic B); Make sure the cartridges installed well.(Pic.C)



A



B



C

5、 Step 5, Fix Supporting Arm:

- 1) Tear off the sticker (Pic A); Measure 2.6cm from the edge of the printer, Attach supporting arm on the printer as Picture B show;
- 2) The right position like Picture C shown
- 3) Tear off the sticker of small tube clamp; Attach it at the 4cm away from the edge of the Printer. As picture F shown.



Rip the label



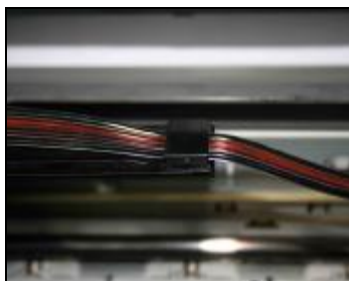
Stick the Support arm at 3cm distance from the left side, and at 4 cm distance from the upside of the printer



as the position show on the above picture.

6、 Step 6. Install the tubing.

Put the tube into the Support Arm and Small Tube clamp as the below picture shown.



Clamp the tube on the support arm



Finish

7、 Step Seven: Adjusting the Tube



Adjust the tube length and move the cartridge car. Insure there will no block and collision when the tubes moving with cartridge car .Insure there's plenty length of tube to make the cartridge cart can thoroughly move to the left side.



The tube is excessive long, it is not ok.



The tube is twist ,it is not ok.



In this situation ,it is ok

8、 Step Eight: Install the clamp like the Picture Shown(Pic A), Plug the power connector (Pic.A) ; Turn on the power (Pic B). Watch for anything unusual.



A

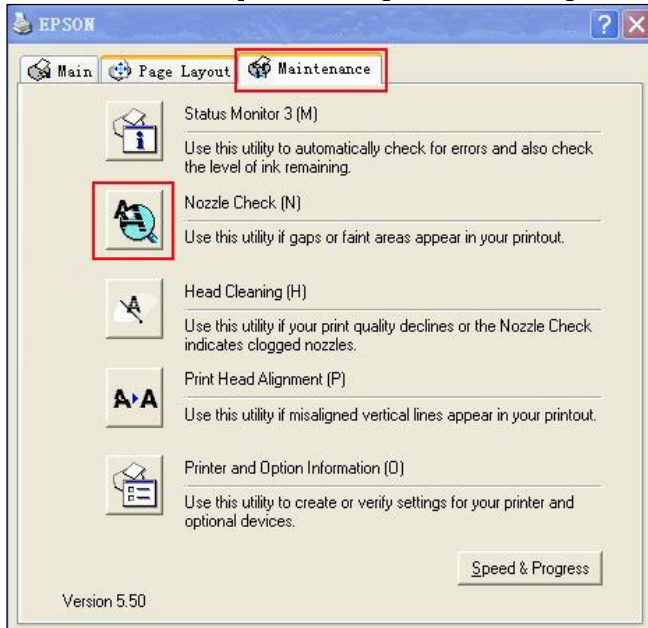


B



C

9, Ninth step: Checking the Printing head



Printing testing normal, Begin to print



Printing Break, Clear the printer head

Enter Printer service

If there shows any breaks (maybe it caused by air bubbles in the printing head), please clean your printing head. If it is still shown little breaks, especially only for one color, it is unnecessary to repeatedly clean printer-head. Just keep the printer unuse for about one hour, If it is still abnormal, please kindly contact local dealer.

Reset Procedure:



If the indicator light flashing when printing, it tells that you need to reset the chip to full status. Please turn off your printer for about 1 minutes and switch it back on. Ink meter bar shall show full ink. You can start printing as usual.

Refill Ink:



Please pay attention to the ink level in the reservoirs; if the ink level is below 1CM as the above picture shown, please use refill kits to fill ink into Reservoir bottles. Carefully pull out

the rubber plugs from the refill holes.(there is possibility of ink spattering. Be careful!) Refill ink according to the color in short supply. Then put the rubber back. **(Please keep the printer and the reservoir at the same horizontal line during the process of refilling ink.)**

Close the cartridge cover as the below pictures shown.



Attention for maintenance:

Take out the CISS including the inner cartridges and other components. Then remove support arm from printer, and place the original cartridges in. Please inquire local dealer before sending to maintenance.

Notice:

1. Please don't take out cartridge at random after installing the CIS system. Keep the reservoir bottles on the same level with the printer.
2. Try to keep at least 1/2 inch of ink in the bottles, as you don't want to run out of ink and draw air into the cartridge.
3. Don't place the Reservoir Bottles higher or lower much than the printer.
4. To be used in a dry place between 15 and 35 degree. Avoid exposure to direct sunlight.
5. Don't put the continuous ink supply systems reversed or leaning during the shipment. Please make sure all the ink filling holes and Ventilation holes are closed tightly during the transportation. Otherwise, the ink shall leak out.
6. Don't sway the cartridge frequently. It may cause ink leakage.
7. Don't pull out the connector of cartridge and don't tear off adhesive tape at the bottom of cartridge.

Warning:

1. Not drinkable; keep it out reach of children.
2. Avoid exposure to direct sunshine and don't keep it in high or freezing temperature.
3. Avoid collision and fallen down.