
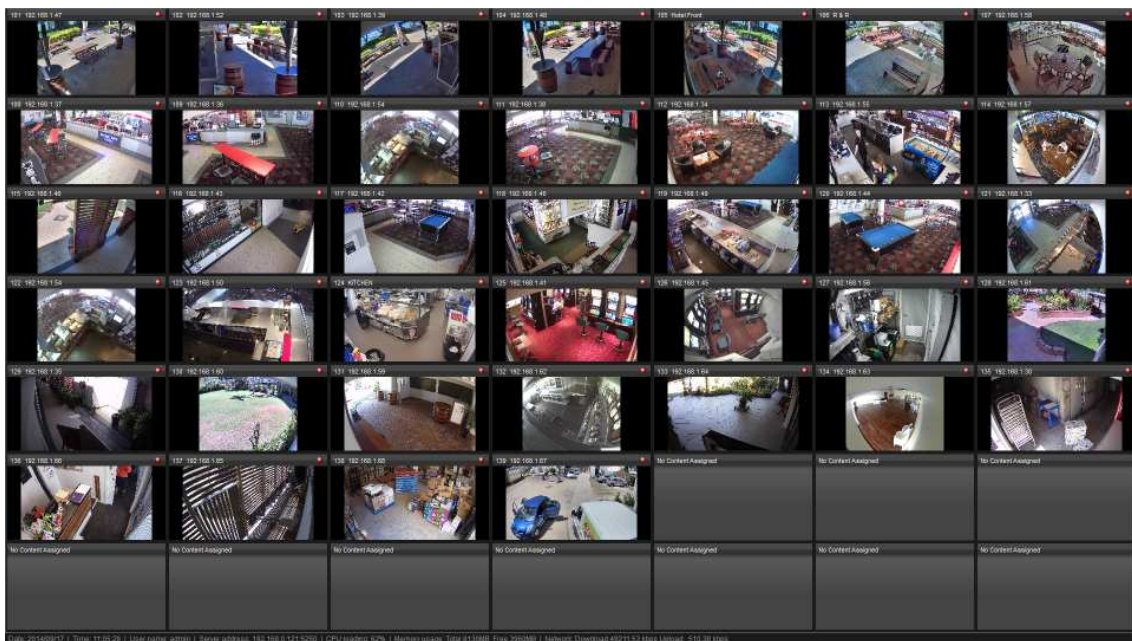




NUUO Titan Recorder Manual

Live View

If Titan has not already started, double click the *NUUO Client* icon  to open the *Live View* window



The *Live View* window will start up in “Full Screen” mode

To view a single camera, click once followed by a double click. To return to the multi-camera view, double click the image.

Playback

To access playback, first you have to exit “Full Screen” mode by pressing the “Esc” button on the keyboard (top left on the keyboard). This will bring up all the options that surround the images.



At the middle top of the *Live View* screen there are two tabs, “Live View” and “Playback”. The current view will be highlighted in blue.

Click the “Playback” tab to enter the *Playback View*.



- Footage on cameras are displayed on the time-line at the bottom of the screen. A blue bar is an indication of existing footage and the absence of a blue bar is an indication of no footage for that camera at that time.
- Cameras are identified at the left side of the blue bars as numbers starting from 101. Note that these numbers correspond to the same numbers on the top left of each camera image.

Clicking on a single camera will highlight that image in blue (eg camera 119 in the figure below) and will highlight the blue “footage indicator” bar at the bottom of the *Playback* screen by turning it light blue.



Double clicking the image will also bring it up to be full screen as with the *Live View*.

Locating footage:

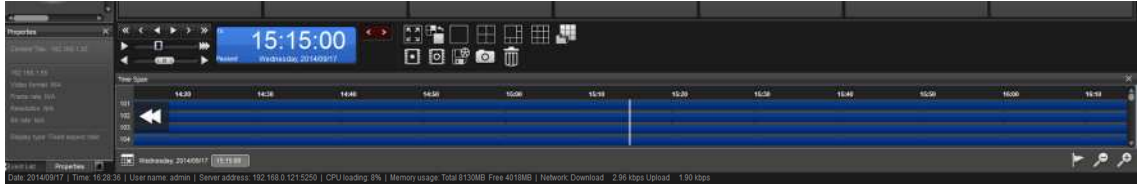
- Click on the calendar icon at the bottom left and select a date. Note that all dates with footage are bolded, those that are not bolded do not have footage.



- Note also that you can use the green arrows at each side of the top of the calendar to change months.
- When selecting the date, double clicking will select the date and remove the calendar. A single click will select the date and not remove the calendar, in this instance, to remove the calendar click on an image. If you click on the blue bars at the bottom it will move the time.
- Next, select the time you wish to view from by clicking in the blue bars at the time you want. Note that the entire set of bars will move to place the selected

time at the middle of the bars. The selected time is indicated by the vertical white line.

- Note that if you move the cursor to either end of the blue bars you will find a double arrow button will appear (see below left).




- Clicking on the arrow will move the time-line in that direction.
- Clicking on any part of the time-line will centre it on that time.
- At the bottom right are two magnifying glasses, one has a negative sign and the other a positive sign. These expand and contract the length of time across the page.
- Once you have located the desired time, you may use the play buttons to the left of the time (highlighted in blue, see above) to play the footage. The controls are very much like a DVD player's controls. The speed of playback is controlled by the slider directly below the play buttons. The speed of playback can be seen in the top left of the blue box around the time (see 1x in the time box above).
- Note that all boxes will tell you what they do if you hover the mouse over it. For instance if you place the mouse over the single arrow to the right of the play arrow it will show that it is the "step forward" function (see below), which allows the footage to be displayed one frame at a time.



Exporting Footage

Exporting footage is a simple two step process. Set the time window then export the footage.

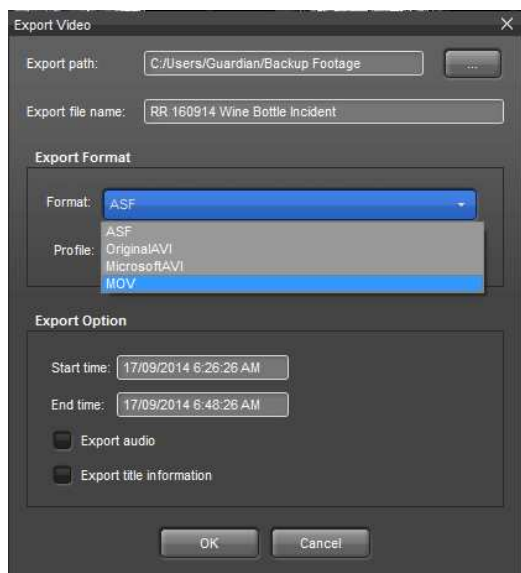
In the *Playback View* there are three icons that pertain to these two steps , they are located just to the right of the blue time box. From left to right they are: “Start Time”, “End Time” and “Export Video”.

Setting the time window:

Once the start time of the footage has been determined using *Playback*, go to that time in the footage and click on the “Start Time” icon and that time will be flagged. Then move to the end time in the footage and click on the “End Time”. The time window for exporting is now set. You can tweak these times by dragging the start and end flags.

Backing up footage:

First ensure that you have selected a camera. Do this by clicking on one of the camera images. Then click on the “Export Video” icon. The Export Video window will pop up.



Start from the top and work your way down:

- **Export Path:** This is set to C:/Users/Guardian/Backup Footage
This has an icon on the desktop, but can be changed by clicking on the button at the right of the Export path name and navigating to the desired location.
- **Export file name:** This will be blank when the window first pops up. Use a name that describes the incident. It's a good idea to have the location and date as well as the incident name.
- **Next choose the Format.** Click on the down arrow at the right side of this box and select “OriginalAVI”
- **Now click OK at the bottom.** The footage will be copied to the Backup Footage folder. To play it back, go to the folder and double click it.