

Attention:
Price change per
February 1, 2008.
For actual prices, see
our Price List or the
Internet.

TouchPLC™

**TOUCH PANEL WITH
BUILT-IN PLC**



EZTouchPLC™

The Most SENSIBLE Touch Panel and PLC Controller in One

What is EZTouchPLC?

EZTouchPLC is the most sensible combination of PLC and HMI in one highly integrated package. It utilizes EZPLC's base and thus capable of all the features present in our EZPLC and uses our 'Mix-n-Match' EZIO to deliver a truly modular integrated system.

What Does It Have?

- Incredible 3-D graphical objects: pushbuttons, numeric entry, meters, line graphs, PID faceplates, etc. All are high-speed, vector-based objects with amazing scalability.
- Display text in up to nine different languages (user-selected by a push of a button!)
- Built-in Symbol Factory with over 4,000 symbols
- Screen and object password protection (eight user-defined levels)
- Unmatched alarm capability with history, count and details
- Recipe downloads to the PLC: 20 values into 20 registers (fixed or variable)
- Floating-point numbers to and from PLC
- Built-in clock and calendar
- Forty-character tagnames mapped to PLC addresses
- Bitmaps can be sized on the screen in the Programming Software
- Import/Export tags and messages to/from Excel or CSV files
- Export alarms to Excel or CSV file
- Multi-state Bitmap object (bit or word selectable)
- Multi-state Indicator/Message object (bit or word selectable) allows up to four embedded data variables in messages
- Bitmap Button object
- Scalable meters and bar graphs
- Floating point support for Meters, Bar Graphs, PID and Line Graphs
- User-selectable 3-D frames
- Password protected Alarms
- Extremely flexible 8 point I/O modules
- 64K PLC Program memory
- Extremely fast scan time: 3ms for 1k
- Powerful Ladder Logic Instruction Set
- One extra RS422/485 Comm. port
- Supports ASCII In/out
- Extremely cost effective Ethernet, Devicenet and Profibus option cards
- Extremely cost effective Analog I/O
- 100 KHz counter module
- Interrupt Input module
- Save as much as 35% on panel space

Where Does It Make Sense?

EZTouchPLC can be used as a total control for a small to medium machine that requires a touch type graphical display. It eliminates the need to buy and install a PLC and Operator Interface separately and thus reduces the electrical panel space, makes the control system extremely compact and cost effective. With EZTouchPLC starting at €548 for a 32 Digital I/O system (16 Dig In/16 Dig Out), it is built to compete in the market of Embedded controllers without the hassle of "C" level programming or proprietary microprocessor boards. EZTouchPLC uses EZI/O modules for I/O (starting at €19 for 8 Digital Out!) which can be chosen from a large variety of options including Analog I/O, High Speed Counter, Relay, and AC/DC combo modules.

6" White on Blue Touch Panel with 32 Digital I/O PLC and Built-in RS422/485 Com. Port



**Starting At
€548**



DeviceNet, Profibus or Ethernet Connectivity Options

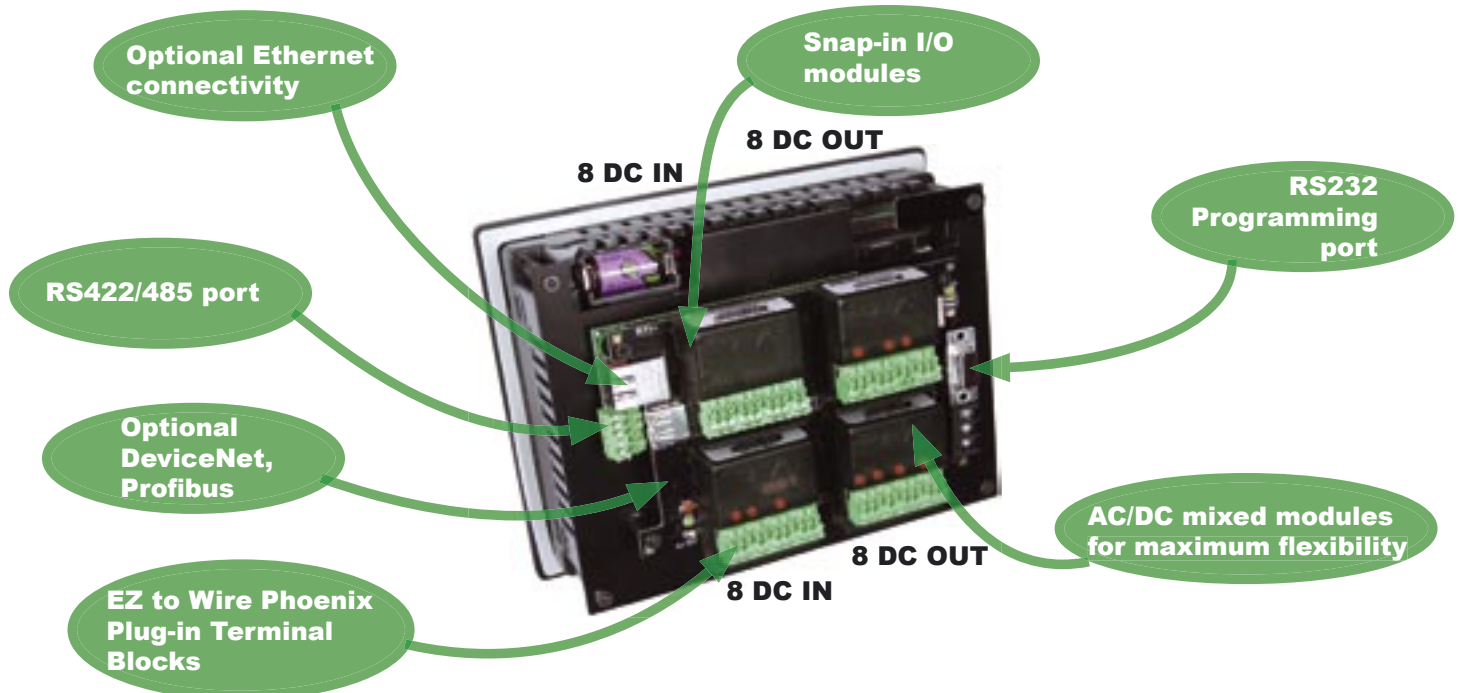
EZTouchPLC™



- 6" White on Blue Operator Interface (Touch Panel)
- Nema 4 Front Bezel
- Pre-Built 3-D Panel Objects
- Online Programming
- Display text in up to nine different languages (user-selected by a push of a button!)
- Built-in Symbol Factory with over 4,000 symbols
- Screen and object password protection (eight user-defined levels)
- Unmatched alarm capability with history, count and details
- Recipe downloads to the PLC: 20 values into 20 registers (fixed or variable)
- Floating-point numbers to and from PLC
- Built-in clock and calendar
- Forty-character tagnames mapped to PLC addresses

**Look at what
you get for
€548!**

- Bitmaps can be sized on the screen in the Programming Software
- Import/Export tags and messages to/from Excel or CSV files
- Export alarms to Excel or CSV file
- Multi-state Bitmap object (bit or word selectable)
- Multi-state Indicator/Message object (bit or word selectable) allows up to four embedded data variables in messages
- Bitmap Button object
- Scalable meters and bar graphs
- Floating point support for Meters, Bar Graphs, PID and Line Graphs
- 32 I/O Base – Allows Max of 4 (8 point I/O) modules
- (16) 24VDC Digital Inputs
- (16) 24VDC 0.4 Amps Source Outputs, Short Circuit Proof
- I/O Modules are Snap-In 8 Point with Status LED's
- 3.5 mm Phoenix Removable Field Terminal Blocks
- Single Tag Database for both PLC and HMI
- Three PLC States: Run, Program and Run/Program with LED Indicators
- CPU Status LED Indicator
- Low Battery LED Indicator
- 8192 Variables, 8192 Registers
- 64 KB User Memory
- 3 ms Scan Time
- RS422/485 Communication Port Built-in
- Supports ASCII In/Out
- Powerful Ladder Logic Instruction Set
- Single EZTouchPLC Editor for €99 With Common Tag Database
- 8.048 x 6.145 x 4.146 for Complete Package



EZTouchPLC™

The Combination of the World's Eziest to Use Touch Panel and PLC is Simply Unbeatable!



Look at what
you get for
\$1,476!

- 8" STN Color Operator Interface (Touch Panel)
- Slim Front Bezel, NEMA 4,4x
- Ease of use of an EZTouch or EZPanel Enhanced
- Online Programming
- 64 I/O Base – Allows Max of 8 (8 point I/O) modules
- 16 24VDC Digital Inputs
- 16 24VDC 0.5 Amps Source Outputs, Short Circuit Proof
- 4 12 bit Analog Inputs, 4 12 bit Analog Outputs
- 4 AC In, 4 Relay Out
- 4 110 VAC In / 4 110 VAC Out
- 4 Thermocouple In
- I/O Modules are Snap-In 8 Point, with Status LED's
- 3.5 mm Pheonix Removable Terminal Blocks
- Single Tag Database for both PLC and HMI
- Built-in real time clock/calendar
- 8192 Variables, 8192 Registers
- 64 KB User Memory
- 3 ms Scan Time
- RS422/485 Communication Port Built-in
- Supports ASCII In/Out
- Powerful Ladder Logic Instruction Set
- Single EZTouchPLC Editor for \$99 With Common Tag Database
- 10.894 x 8.748 x 4.326 for Complete Package



Let's Compare as to what it would take for a competitor to deliver this 60 I/O System

ADC DL205 (Job is too big for DL06)

Part Number	Qty	Description	Price
D2-260	1	30.4K CPU	\$299
D2-09BDC1-1	1	9 slot base	\$195
D2-16ND3-2	1	16 point DC In	\$79
D2-16TD2-2	1	16 point DC Out	\$82
F2-4AD2DA	1	4 Analog In, 2 Analog Out	\$279
F2-02DA-1	1	2 Analog Out	\$152
D2-04TRS	1	4 Relay	\$60
D2-08NA-1	1	8 AC In	\$65
D2-08TA	1	8 AC Out	\$95
F2-04THM	1	4 Thermocouple	\$299
EZ-S8C-FS	1	8.2" STN Color EZTouch Panel	\$1,099
EZ-2CBL-1	1	10' Cable to PLC	\$20

Total \$2,724

AB MicroLogix 1200

Part Number	Qty	Description	Price
1762-L40BXB	1	MicroLogix 1200, 40 pt	\$649
1762-IA8	1	8 Point 120 VAC Input Module	\$139
1762-OA8	1	8 Point 120/240 VAC Output Module	\$180
1762-OB8	1	8 Point 24 VDC Source Output Module	\$144
1762-IT4	1	4 Channel, Thermocouple/ Mv Module	\$412
1762-IF2OF2	2	4 Channel Analog Combo Module	\$294
2711-NC21	1	16.4 ft (5m) RS232 Operating Cable	\$70
2711P-T7C4D1	1	Standard Communications, 7 inch PanelView Plus	\$2,425

Total \$4,607



EZTouchPLC™

Lets Compare to a Separate Operator Interface and PLC From Automation Direct!

32 I/O with 6" Monochrome Touch Panel
16 Digital In, 16 Digital Out 24 VDC Power



**SPACE SAVING
IS AN
ADDED BENEFIT**

**DL06 and
EZTouch**



EZTouchPLC



\$689



**\$808 with
Programming Software**

EZTouchPLC Requirements		
Price	Model	Description
\$613	EZP-S6M-FS-PLC	6" Mono EZTouch with Built-in EZPLC - EZTouchPLC!
2@ \$19	EZP-8DCI	8 DC Input EZIO Module
2@ \$19	EZP-8DCO	8 DC Output EZIO Module
Total \$689		
With Programming Software and Cables		
\$20	EZP-PGMCBL	Programming Cable for EZTouchPLC
\$99	EZP-TOUCHPLC-EDIT	Programming Software for EZouchPLC
Total \$857		

DL06 and EZTouch Requirements

Price	Model	Description
\$199	DO-06DD2-D	(20 DC In/16 DC Out, 12/24VDC)
\$580	EZ-S6M-FS	EZTouch 6" Mono Touch Panel
\$20	EZ-2CBL	EZTouch to DL06 Communication Cable (RS232C Cable)
\$60	NEMA 12 Enclosure	Min. Additional Enclosure Cost difference *
\$30		Min. Additional Labor Cost to Install DL06
Total \$889		
With Programming Software and Cables		
\$149	PC-PGM-BRICK	DirectSOFT32 for Windows PC
\$30	D2-DSCBL	PC Programming Cable for DL06
\$140	EZ-TOUCHEDIT	EZ Touch Software
\$20	EZTOUCH-PGMCBL	EZTouch Programming Cable
Total \$1,228		

\$889

**\$1228 with
Programming
Software**

*See page 6-9

EZTouchPLC™

Let's Compare to a Separate Operator Interface and PLC from Allen Bradley

32 I/O with 6" Monochrome Touch Panel
16 Digital In, 16 Digital Out -- 24 VDC Power



EZTouchPLC



\$689

\$808 with Programming Software

EZTouchPLC Requirements		
Price	Model	Description
\$613	EZP-S6M-FS-PLC	6" Mono EZTouch with Built-in EZPLC - EZTouchPLC!
2@ \$19	EZP-8DCI	8 DC Input EZIO Module
2@ \$19	EZP-8DCO	8 DC Output EZIO Module
Total \$689		
With Programming Software and Cables		
\$20	EZP-PGMCBL	Programming Cable for EZTouchPLC
\$99	EZP-TOUCHPLC-EDIT	Programming Software for EZTouchPLC
Total \$857		



MicroLogix 1200 and PV550

\$1985

\$3590 with Programming Software

MicroLogix 1200 and PV550 Requirements		
Price	Model	Description
\$649	1762-L40BxB	MicroLogix 1200 PLC with 24 DC In and 8 FET (24DC) Out
\$144	1762-OB8	8 Point 24VDC output
\$52	1762-RTC	Real Time Clock
\$182	EZ-220	EZ Text
\$28	EZ-TEXTEDIT	EZ Text Software
\$1,070	2711-T5A16L1	PV550 Mono Touch, DF1 & RS232 Print Port
\$70	2711-NC21	5 Meter RS232 Cable, PV TO MicroLogix
Total \$1985		
With Programming Software and Cables		
\$67	1756-CP3	LOGIX5000 RS232 Programmer Cable
\$1,133	9324-RL0300ENE	RSLOGIX 500 Standard CD-ROM
\$305	2711-ND3	PANELBUILDER32 Software for PanelView
\$100	2711-NC13	5 Meter RS232 Operating/Programming Cable
Total \$3590		

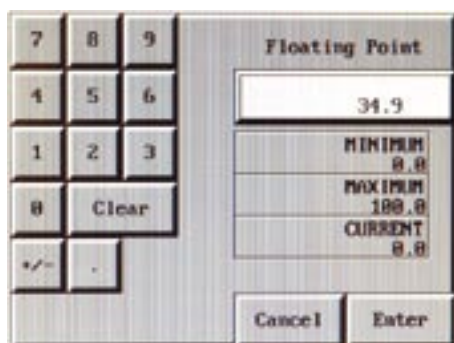
Just a Few Reasons Operators Love EZTouchPLC's HMI Screens

Our Engineers and Technical support personnel worked closely in designing this product, keeping one thing in mind... that this touch panel has to be the most user friendly for machine operators. Here are some highlighted features:



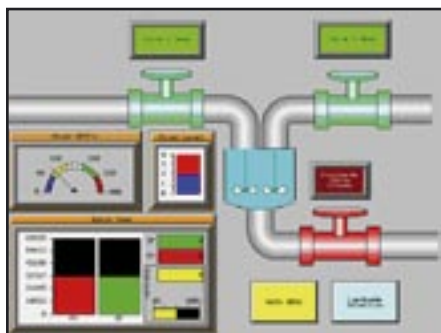
1 Operators Can Choose their Favorite Language

The United States has one of the most culturally diverse population of all countries and that means operators have a need for multiple languages. We were among the first to identify this need which resulted in multiple language support in our EZTouchPLC Editor. You can configure each and every object (except PID face plate) for up to nine different languages (ASCII characters) each. While configuring our panel, a "language button" can be created to let the operators select their favorite language. For example, one operator can change the whole screen to Spanish by pressing a "Spanish" button. The next operator can change the whole screen to English by pressing an "English" Button. And so on...



2 It's EZier than ever for operators to input data!

EZTouchPLC allows pop-up keypads for users to enter data in any of its supported formats (Signed and Un-Signed Decimal, Floating Point, Hexadecimal, and Octal). When creating pop-up type inputs for the above type formats, it automatically selects the right type based on the PLC/internal tag chosen. Ever needed a thumbwheel type input? We've added that as well, which allows the operator to scroll up/down each digit (max of five digits). All the data input type objects (including pop-up and thumbwheel) can be protected with up to eight levels of password protection. These passwords can be pre-programmed in our editor or they could be pointers to registers in a PLC. Having the passwords pointing to PLC registers allows for different passwords for multiple shifts and overrides by supervisors.



3 Scale objects to any size with no distortion

Our Editor uses vector-based graphics for objects. Unlike other editors that use graphic symbols, which distort when scaled, objects created by EZTouchPLC Editor retain their shape with no or very little distortion. Another advantage to using vector based graphics is the super fast response time as our objects utilize very little memory. Any object in our editor is configurable up to 128 colors and allows importing of bitmaps as well with 128 colors.



4 The most sensible objects hard to find in other brands

EZTouchPLC offers a graphical trending feature (great for time change over), PID face plates (single loop PID controller face plates), Downloadable Recipe (you can download up to 20 values, predefined or pointing to variable registers, to a PLC with just a single push button), thumbwheel, analog and digital clocks, radio buttons, step switches, many forms of meters, and many more along with our 4000 objects from SymbolFactory™.

EZTouchPLCs are EZ to Operate

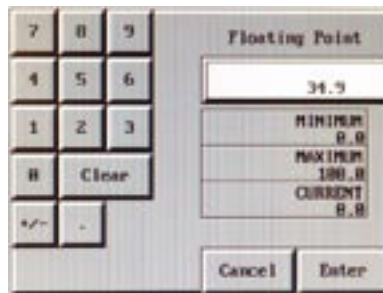
Eight levels of password security for every input object.

All data input objects have password security. A user can define up to eight password labels of security. In addition, variable passwords can be defined from registers in the PLC.



POP-UP Keypad allows you to enter data into a pre-defined PLC register.

The numeric entry object allows you to write a value to a PLC register. Using range check options you can pre-define the minimum and maximum set points. The keypad also automatically changes data types to what is appropriate, such as floating points, octal, hexadecimal or signed/ unsigned decimal.



POP-UP Electronic Thumbwheel emulates a mechanical thumbwheel switch.

A pop-up thumbwheel operates just as a mechanical thumbwheel would, in that the operator can "scroll" each digit up and down. Simply hit "ENT" or "Enter" on all pop-ups to download your entry to the PLC.



PLC Performance You Will Find Only in PLCs Costing Thousands More!

8192 Registers
8192 Variables

64K
Available
for
Ladder &
Memory

64k Byte User Memory

Most Micro PLCs have only a limited 8-16k memory. But not this souped up PLC! Some of the things you can do with this 64k byte memory:

- Store 2000 Messages
- Store 500 20 Variable Recipes
- Collect 10,000 Four Variable Data Points

32 Bit, 40 MHz RISC Processor Dedicated to PLC Processing Only, with a Separate Processor for HMI

The EZTouchPLC has two processors, one for handling the PLC and its I/O, and another co-processor for handling the HMI functions. Even though the two processors cost more, we wanted to make sure that you have one of the fastest PLCs on your machine. This €548 Touch Panel PLC rivals scantime specifications of the fastest full-blown PLCs. Additionally, the two processors even have their own power supplies. So, if the touch screen was to fail, it would not impact the PLC side of the EZTouchPLC.

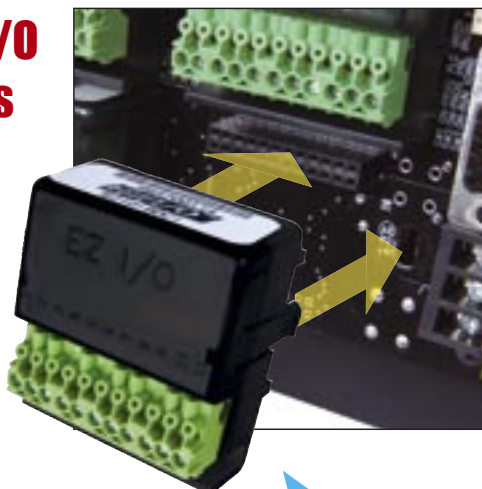


EZ Touch PLC™ We Looked At Every Detail!

Snap-in I/O Modules

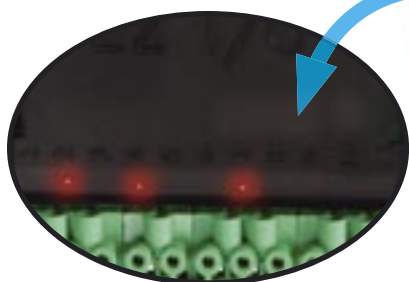


Back side of EZ I/O module

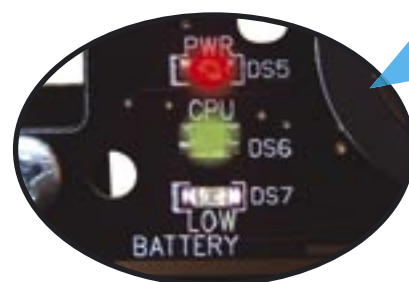


AC/DC Mixed Modules for Highest Flexibility

I/O Status LED Indicators



CPU Status Indicator LEDs



4 In/4 Out Wide Variety of Mix-n-Match I/O Modules

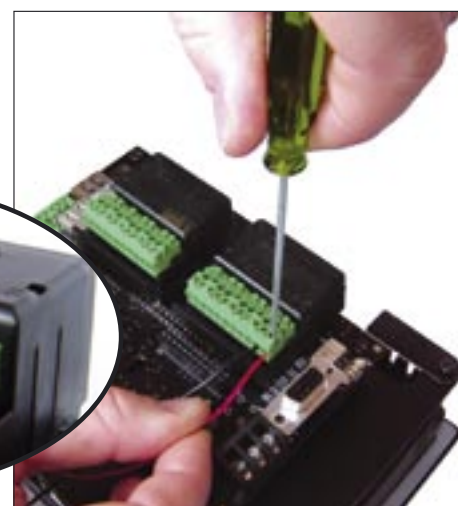
EZPLC offers the widest range of 4 In/4 Out I/O modules. Mix 4 DC In with 4 AC Out.

0.5 Amp Short Circuit Proof DC Outputs

This 2x2x1" ultra compact module has 8 DC Outputs rated at 0.5 Amp each that are short circuit proof!



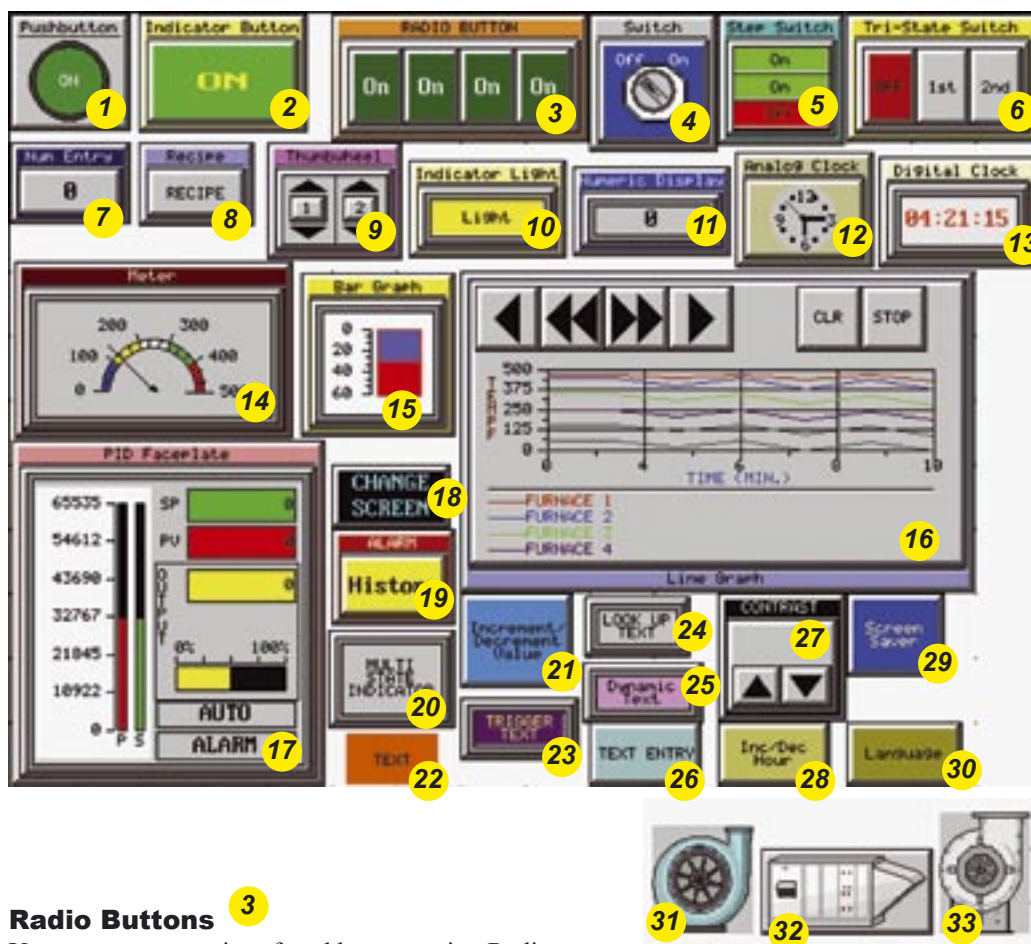
EZ to Wire Phoenix Plug-in Terminal Blocks



EZTouchPLC Objects

The Most Sensible, Best-Looking Objects Available

The screen below shows a configuration of the available 33 objects in EZTouchPLC Editor. This and the following page describe some of the featured objects available in the EZTouchPLC.



Radio Buttons 3

You can create a series of pushbuttons using Radio Button Object. When one button is on, all the other buttons are off (Only one button/station active at one time, like an old car radio)

Meters 14

Meter Object has many style types and operations available. EZTouchPLC Editor allows you to custom design the color bars for alarm zones and also allows you to select the number of divisions to be displayed. The meters provide an excellent graphical representation of analog gauges.

Line and Bar Graphs 15 16

The Line and Bar graph objects have an outstanding resolution. You can custom design the legend for X and Y axis and assign labels to major "tic" marks on a chart. Just adding a bit of color makes them as visually appealing as they are functional. Line graph object has a VCR type forward/backward controls to view historical data.

PID Faceplate 17

Use our PID faceplate for PLC systems capable of PID loops. PID faceplate allows you to display values for three PID loop controlled parameters in the form of bar graphs.

	1	Pushbutton
	2	Indicator Button
	3	Radio Button
	4	Switch
	5	Step Switch
	6	Tri-State Switch
	7	Numeric Entry
	8	Recipe
	9	Thumbwheel
	10	Indicator Light
	11	Numeric Display
	12	Analog Clock
	13	Digital Clock
	14	Meter
	15	Bar Graph
	16	Line Graph
	17	PID Faceplate
	18	Screen Change
	19	Alarm History
	20	Multi-state Indicator
	21	Increment/Decrement
	22	Static Text
	23	Trigger Text
	24	Lookup Text
	25	Dynamic Text
	26	Text Entry
	27	Adjust Contrast
	28	Inc/Dec Hour
	29	Activate Screen Save
	30	Select Language
	31	Dynamic Bitmap
	32	Bitmap Button
	33	Multi-state Bitmap

EZTouchPLC Objects

Recipe Objects 8

By using one of our most desired Recipe objects, you can download up to 20 pre-set or variable PLC registers per Recipe in the EZTouchPLC panel. This object can also be used to set values in PLC registers to change a process all together!



With one press of a button, you can view all of the tag-names and values of the recipe batch.



Alarm History 19

Use our pre-built Alarm History button to show Alarm Count and Alarm History with one touch of a button. Alarm History displays all the alarms triggered sequentially with the most recent one right on the top, whereas Alarm Count displays the exact number of times a certain alarm has been triggered. Use this great preventive maintenance tool to replace any components that need to be changed. Any time an alarm is highlighted and selected, it will show you all the details that you'll ever need to know including the time it was triggered, the time it was cleared, date stamp, upper and lower limits along with the limit that tripped an alarm.



With a push of a button, you can view Alarm Count, Alarm History, and Alarm Details.



Bitmap Objects 31 32 33

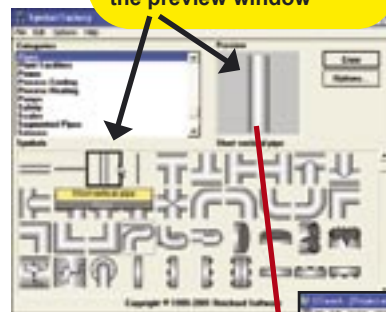
EZTouchPLC Editor allows you to create Dynamic Bitmaps, Multi-state Bitmaps, Button Bitmaps, and Static Bitmap Objects in a breeze. There is a built in library of 4,000 objects available for you to copy and paste directly to a project screen and use them in any arrangement or position them just the way you like.

For a true dynamic simulation, use our Dynamic Bitmap object to stack layers upon layers of bitmap objects which only allows one bitmap object to be displayed at one time based on whether it is triggered by a control program or the panel itself. For example, you can display a red image of a blower when it's turned off and a green image when turned on. Dynamic Bitmap Objects allow you to select different bitmaps for "On" and "Off" states of a PLC/Internal register. Under "On Bitmap" settings, select a green blower (using the symbol factory) and repeat for "Off Bitmap" with a red blower. That's it! And you have created a dynamic simulation of your blower.

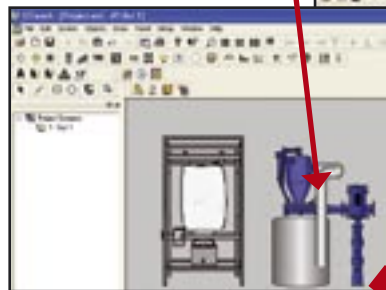
Multi-State Bitmaps have the same functionality of Dynamic Bitmap buttons with only one difference: It is a lot more powerful in that it allows you to display all the way to 16 bitmaps based on the value of a bit in a word or a word address.

A 'Bitmap Button' object is a "Button" which is capable of displaying different bitmap images when turned on or off by a user with the touch of a button. On the other hand a 'Static Bitmap' lets you display a bitmap (imported, copied from clipboard, or symbol factory) which can be resized within the editor and stays static on a screen, e.g. a company logo.

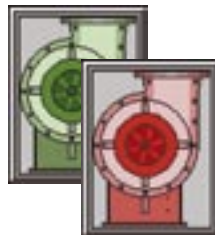
The selected object will be highlighted and shown in the preview window



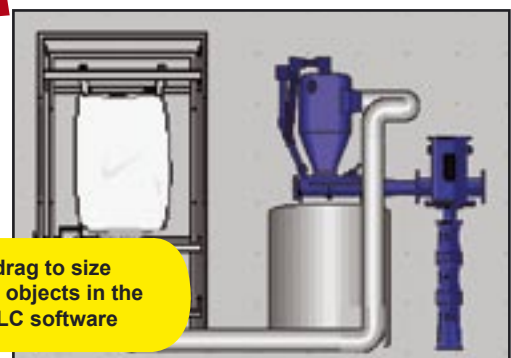
Copy the symbol from the library and paste it onto the EZTouchPLC screen



You can customize the screen to simulate your process by adding bitmaps from the extensive symbol library included in the EZTouchPLC Software.



Click and drag to size the bitmap objects in the EZTouchPLC software



EZTouchPLC™

It is Very EZ to Program an

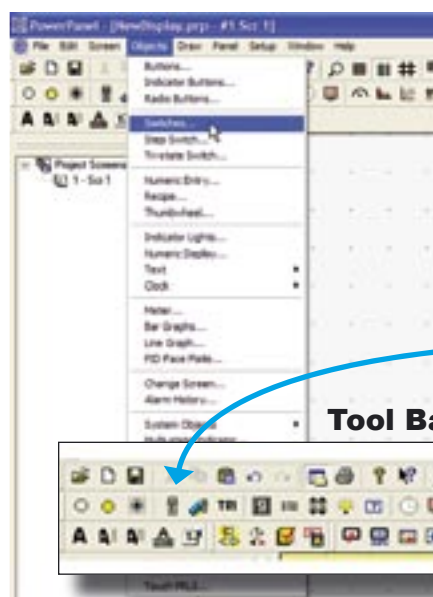
EZTouchPLC has earned it's name!

We named it EZTouchPLC for a reason. We made an easy to use, simple operator interface attached to a powerful micro-modular PLC that will save you a lot of engineering hours and design time due to its simplicity and ease of use. You don't need prior programming knowledge to design a screen. It is Intuitive, it is Simple!

The following example shows just how EZ it is to create an object:

The only assumptions are:

- You are familiar with Windows-based environments
- You have a good understanding of your PLC memory's address formats



1

Select an Object

- Click on "Objects" on the main menu bar
- Select the object you wish to create. In this example, click on "Switches".

You may also select an object from the tool bar below the main menu.

Tool Bar



2

Fill in the Dialog Box

- Click the style of switch you wish to use.
- Select "Label Text". This will allow you to name and customize the object.
- Select or create a PLC bit address tag that the "Switch" will activate.
- If you need password protection, click on the "Protection" tab at the top of the dialog box.
- If you wish to keep this object invisible until a PLC tag is triggered, click on "Visibility/Details".

Visibility will be discussed later in detail.



3

Placing the Object

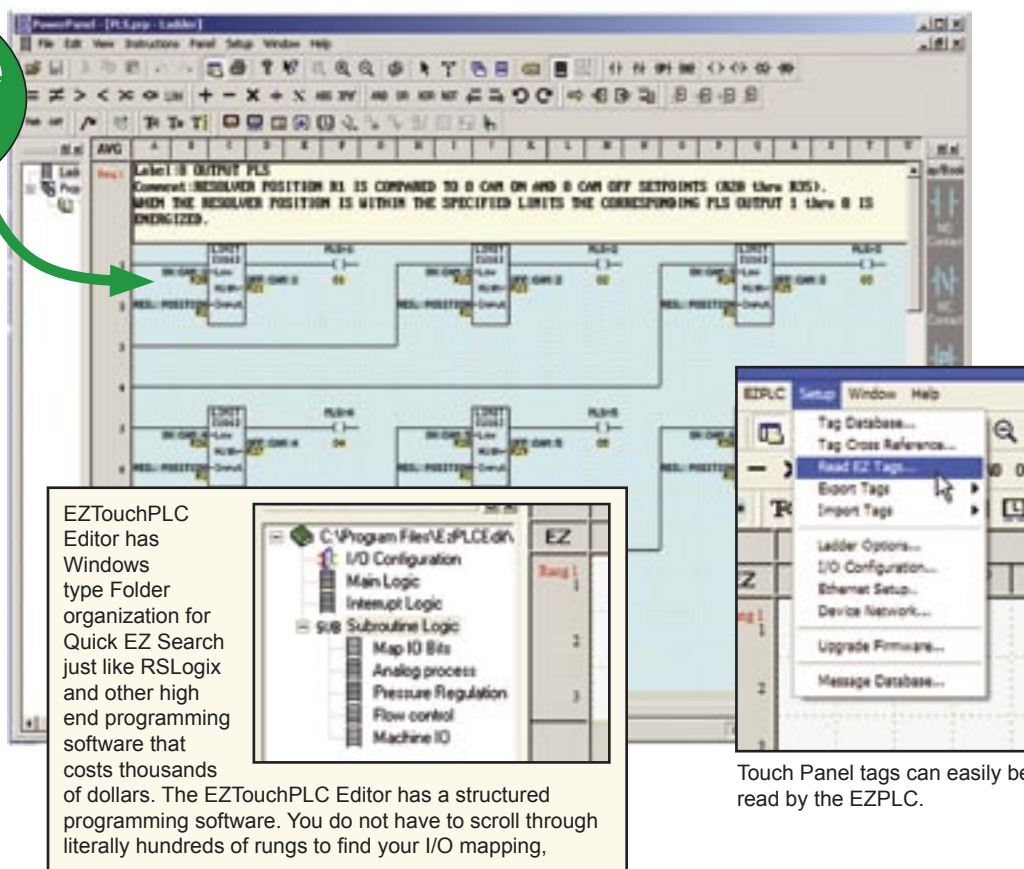
Click your mouse on the screen and stretch the object to your desired size. If you want to edit the object again, simply double click on it and the configuration dialog box will reappear. There is even a "Simulate" button on the dialog box for some objects so you can see how objects will work in real time.



EZTouchPLC Panel with Shared Databases

Just One Rung!

The concept of this patent pending Free Flow Ladder Logic is to create less restricted rungs of logic. This saves the user rung space and valuable scan time. On the right you will see an example of Free Flow Ladder Logic. As you can see the Free Flow logic allows logic to be placed and connected anywhere in the rung rather than creating a new rung. This allows the user to spend more time on other parts of the machine development and let the CPU do more of the work of solving the logic.



Touch Panel tags can easily be read by the EZPLC.

Advanced Instructions:

32-bit floating point calculations

The EZPLC supports 32-bit floating point mathematical and logical operations. The data options allow you to use signed or unsigned integer data as well as floating point data type.

Data Conversion

This instruction is meant to make ladder programming EZ and flexible. You can copy the data in one register, convert its data type and save it into another register without altering the 'source' register. The data can be converted from binary to BCD or grey code or vice versa.

Move Block

This instruction adds convenience to handling data inside the ladder program. You can move blocks of memory. All you need to specify is starting point of your source address, number of data elements to move and starting point of destination memory address. Along with Move Block, Fill Block and Move table of Constants also make life of a programmer much simpler.

String

These instructions operate on ASCII string data type. You can Move string data between registers, base rung power flow upon string comparison and compute string length to store the length value in a different register.

Subroutines

Capability to use subroutines is a huge plus in EZPLC programming. For large and complex programs, user can define many subroutines and use them in the main ladder program. These subroutines can be called from the main logic. Return instruction allows user to return to the main logic at any step.

Drum Sequencer

This is a time or event based sequencer that updates up to 16 outputs per step, up to 16 steps. Time base of each count is user defined and each step has its own counter. User can define an event to trigger the count. The rung power flow is allowed after completion of all the steps in a drum.

Marquee Instructions

Now you don't have to spend days to send signals to your marquee. Send to marquee instruction allows you to communicate to the marquee via ASCII strings. A unique message number is assigned to each message in the message database. This instruction looks up the message number, corresponding to the intended message to be displayed and sends it to the marquee. User can define actions if a message number cannot be found in the database.

Interrupt Routine

This is how your EZPLC would process external events that require "instantaneous" response. User can write a separate interrupt logic routine. At the instance of an external event, the PLC would interrupt the main logic, execute this interrupt logic on a priority, and scan corresponding I/O. It would return to the main logic automatically after processing the interrupt routine.

ASCII Instructions

User can send/receive ASCII string data to/from any register in PLC to a predefined serial port. User can also define the Control address and character count of the source register. Similarly, user can send ASCII string data to a Marquee directly from the main logic.

Bit Move Instructions

Bit move instructions allow the user to move word data from a register type memory address to a bit in a discrete memory location and backward.

For detailed information, see the PLC Programming Instructions on page 8-23 in the EZPLC section.

Unique On-Line Programming Makes Project Design and Start-Up EZier

Patent
Pending

THEIRS

1. Create Screen - 20 minutes
2. Compile and Download to Panel, minimum 5 minutes
3. Check it out on the Panel
4. Change colors, fonts, object sizes an average of 4 times, 5 minutes each

Time to develop and finalize one screen - 60 minutes

Create Screen



60 minutes

Compile... Download...
Compile... Download...
Compile... and Download...
Compile... and Download...
Compile... and Download...
Compile... and Download...
Compile... and Download...
Compile... and Download...



OURS

1. Create a couple of objects
2. Click Save (also transfers to panel instantaneously) to see how they look on Panel
3. Add more objects, click save again

NO COMPILATION OR DOWNLOADS!
Time to develop and finalize one screen - 10 minutes

Create Screen



10 minutes

NO Compilation
or Download
Just Click and
Save to Panel



JUST MAKING IT EZ

**It's like developing screens
right on your panel**



**You know the power of
On-Line programming
if you deal with
machine/process start-up**

During machine start-up, you can simply plug your computer into Panel's Programming Port and:

- 1) Create a Troubleshoot screen
- 2) Create a troubleshoot button on main screen.
- 3) Disable critical outputs
- 4) Monitor registers and/or specific bits in your ladder logic... without ever having to shut down the machine!



1 Connect Computer to Panel



2 Create a temporary Troubleshoot Screen in "Edit On-Line" Mode

3 Troubleshoot without ever having to shut down the machine

Eliminates the need to go through hundreds of ladder rungs to troubleshoot the logic

It's like having a FREE On-Line Debug Tool

This Almost FREE Automation Controller also has Great Connectivity to DeviceNet, Profibus and Ethernet TCP/IP

All EZTouchPLC models can be ordered with Ethernet, DeviceNet and Profibus connectivity through separate part numbers.

Ethernet TCP/IP

All EZTouchPLC models are available with built-in high speed Ethernet TCP/IP communication interface in addition to RS232 and RS422/485 communication ports. This interface allows EZTouchPLC to reside on a 10 Mbps TCP/IP network (10Base T Ethernet) via an RJ45 port. Use Ethernet models for easy Ethernet programming with 100 meters being the maximum distance between two nodes. For distances greater than 100 meters repeaters can be used to extend the distance between any two nodes.

€99



DeviceNet Slave Module

EZTextPLC models when ordered with built-in DeviceNet Slave communication interface provide DeviceNet connectivity in addition to RS232 and RS422/485 communication ports. DeviceNet communication interface for EZTouchPLC provides a digital, multi-drop network that can be used for communicating with DeviceNet enabled controllers and I/O devices. On DeviceNet network every device acts as a node and allows multiple communication hierarchies and prioritization of messages. EZTouchPLC with DeviceNet communication interface can be configured in a master-slave control architecture as a slave node and allows peer-peer communication. DeviceNet control system provides a single point of connection both for configuration and support for I/O as well as explicit messaging.

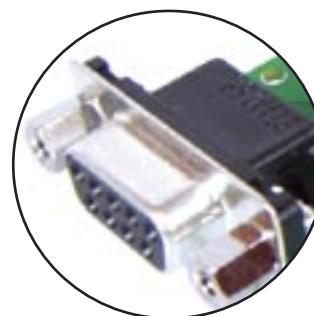
€79



Profibus

All EZTouchPLC models are available with built-in Profibus Slave communication interface in addition to RS232 and RS422/485 communication ports. This gives EZTouchPLC the ability to link with a Profibus Master Controller. Profibus is a vendor independent open field bus protocol standard in manufacturing automation and process control. It reduces hard-wiring costs and provides specifications for information exchanged between nodes of a Profibus network. This communication interface provides the ability to transfer data between a Profibus master and EZTouchPLC. The Profibus communication interface also has an auto-detect feature for the baud rate of the Profibus network.

€129



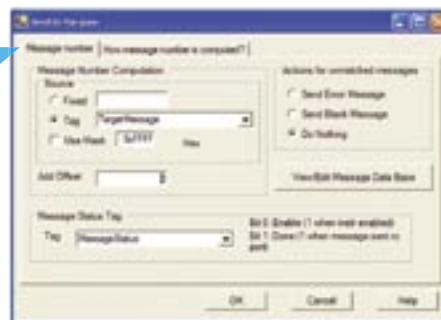
Built-in RS422/485 Port to Communicate to External Devices such as Drives, Message Displays or Temperature Controllers



- 1 Use EZTouchPLC's "Send to Marquee" instruction to initiate communication with EZMarquee.



- 2 Configure your message's source tag and status tag.



- 3 Control your message attributes without ever having to worry about ASCII format



Type in your message along with it's attributes like character size, color, and effects like scrolling or blinking. Preview the message to edit any changes.



8 Models to Choose From Starting as Low as

Key Features

- NEMA 4 or NEMA 1, FDA Compliant Front Bezel
- Pre-Built 3-D Panel Objects
- Display text in up to nine different languages
- Built-in Symbol Factory with over 4,000 symbols
- Screen and object password protection
- Unmatched alarm capability with history, count and details
- Recipe downloads to the PLC
- Floating-point numbers to and from PLC
- Built-in clock and calendar
- Bitmaps can be sized on the screen in the Programming Software
- Import/export messages to/from Excel/CSV files
- Export alarms to Excel or CSV file
- Multi-state Bitmap object (bit or word selectable)
- Multi-state Indicator/Message object (bit or word selectable) allows up to four embedded data variables in messages
- Bitmap Button object
- Scalable meters and bar graphs
- Floating point support for Meters, Bar Graphs, PID and Line Graphs
- 32 I/O Base for 6" models, 64 I/O Base for larger

models

- I/O Modules are Snap-In 8 Point with Status LED's
- Mix-N-Match 8 Point I/O starting as low as €19 for 8 0.5 amp DC short circuit proof outputs
- 1/3rd to 1/10th the cost of competitor's analog I/O, €99 for 4 12 bit Analog In and 4 12 bit Analog Out
- 100KHz counter module with less than 50µs PLS response time
- 3.5 mm Phoenix Removable Terminal Blocks
- Single Tag Database for both PLC and HMI
- 8192 Variables, 8192 Registers
- 64 KB User Memory
- 3 ms Scan Time
- RS422/485 Communication Port Built-in
- Supports ASCII In/Out
- Powerful Ladder Logic Instruction Set
- Less than a 4.25" depth including I/O

€510



NOW THIS IS INCREDIBLE!

Sensible PLC Communications for:
DeviceNet - €79
Profibus - €129
Ethernet - €99

EZTouchPLC
 Editor only
 €99



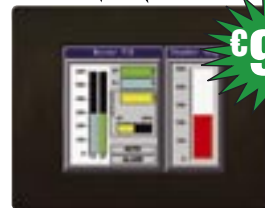
€510

6" White on Blue, QVGA
 EZP-S6W-RS-PLC: €510



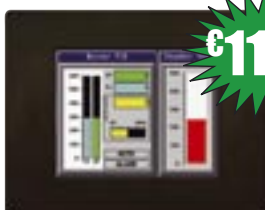
€613

6" Monochrome, QVGA
 EZP-S6M-FS-PLC: €613



€910

6" STN Color, QVGA
 EZP-S6C-FS-PLC: €910



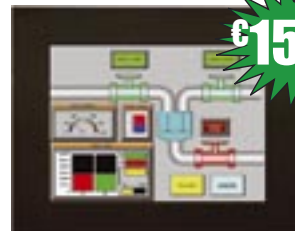
€1110

6" TFT Color, QVGA
 EZP-T6C-FS-PLC: €1110



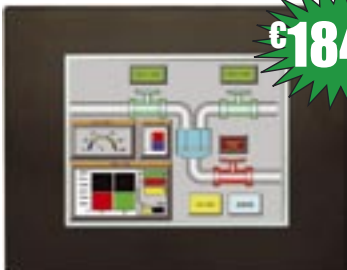
€1099

8" STN Color, VGA
 EZP-S8C-FS-PLC: €1099



€1549

8" TFT Color, VGA
 EZP-T8C-FS-PLC: €1549



€1849

10" TFT Color, VGA
 EZP-T10C-FS-PLC: €1849







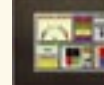
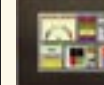


€2649

15" TFT Color, VGA
 EZP-T15C-FS-PLC: €2649



EZTouchPLC™

Selection Guide and Specs

EZTouchPLC Model Specifications								
EZTouch PLC	EZP-S6W-RS-PLC €510	EZP-S6M-FS-PLC €613	EZP-S6C-FS-PLC €910	EZP-T6C-FS-PLC €1,110	EZP-S8C-FS-PLC €1,099	EZP-T8C-FS-PLC €1,549	EZP-T10C-FS-PLC €1,849	EZP-T15C-FS-PLC €2,649
EZTouch PLC w/ Ethernet	EZP-S6W-RS-PLC-E €609	EZP-S6M-FS-PLC-E €712	EZP-S6C-FS-PLC-E €1,009	EZP-T6C-FS-PLC-E €1,209	EZP-S8C-FS-PLC-E €1,198	EZP-T8C-FS-PLC-E €1,648	EZP-T10C-FS-PLC-E €1,948	EZP-T15C-FS-PLC-E €2,748
EZTouch PLC w/ DeviceNet	EZP-S6W-RS-PLC-D €589	EZP-S6M-FS-PLC-D €692	EZP-S6C-FS-PLC-D €989	EZP-T6C-FS-PLC-D €1,189	EZP-S8C-FS-PLC-D €1,178	EZP-T8C-FS-PLC-D €1,628	EZP-T10C-FS-PLC-D €1,928	EZP-T15C-FS-PLC-D €2,728
EZTouch PLC w/ Profibus	EZP-S6W-RS-PLC-P €639	EZP-S6M-FS-PLC-P €742	EZP-S6C-FS-PLC-P €1,139	EZP-T6C-FS-PLC-P €1,239	EZP-S8C-FS-PLC-P €1,228	EZP-T8C-FS-PLC-P €1,678	EZP-T10C-FS-PLC-P €1,978	EZP-T15C-FS-PLC-P €2,778
								
Specifications	6" White on Blue	6" STN Mono	6" STN Color	6" TFT Color	8" STN Color	8" TFT Color	10" TFT Color	15" TFT Color
Display Type	5.7" STN (4 Shades of Blue) 320 x 240	5.7" STN (16 Shades of Gray) 320 x 240	5.7" STN (128-color palette) 320 x 240	5.7" TFT (128-color palette) 320 x 240	8.2" STN (128-color palette) 640 x 480	8" TFT (128-color palette) 640 x 480	10.4" TFT (128-color palette) 640 x 480	15" TFT (128-color palette) 640 x 480
Brightness/Life	140 nits/25,000 hours		180 nits/25,000 hours	200 nits/50,000 hours	140 nits/25,000 hours	200 nits/40,000 hours		250 nits/40,000 hours
Touch Screen	48 Resistive Touch Cells (8x6)	192 Resistive Touch Cells (16x12)						
Num of Display Screens	Up to 999 Limited by display memory							
Display Screen Saver	Yes, Backlight Off							
HMI User Memory	256K HMI RAM Mem.	512K HMI RAM Memory						1MB HMI RAM Memory
Maximum I/O Capacity	4 Slot Base (32I/O Max)				8 Slot Base (64I/O Max)			
Maximum Power Consumption	20 Watts @ 24VDC	22 Watts @ 24VDC	23 Watts @ 24VDC	25 Watts @ 24VDC	27 Watts @ 24VDC	29 Watts @ 24VDC	29 Watts @ 24VDC	33 Watts @ 24VDC
Processors	Two 32 Bit, 40 MHz RISC Processors (One for PLC and One for HMI)							
Total PLC Memory	64 KB (Ladder)							
# of PLC Registers	8192 16Bit, 8192 Variables							
PLC Typical Scan Time	3ms (1K Boolean)							
Real Time Clock/Cal.	Built-in							
Battery Backup	Yes, Lithium coin cell battery with 5 year life expectancy, with a low battery indicator							
PLC LED Indicators	Input Power, CPU Status (Run, Program & Run/Program), Low Battery, Program PLC and Run Mode LED indicators							
I/O Supported	EZIO Snap-in modules with status LEDs and Removable Terminal Block; DC / AC / Analog / Relay / Thermocouple / High Speed Counter							
Electrical Noise	Nema ICS 2-230 Showering arc; ANSI C37.90a SWC; Level C Chattering Relay Test							
Withstand Voltage	1000VDC (1 minute) between power supply input terminal and protective ground)							
Insulation Resistance	Over 20M Ohm between power supply input and terminal and protective ground							
Enclosure	Nema 1 FDA Compliant				Nema 4,4x (indoor);			
Operating Temperature	0C to 45C		0C to 50C	0C to 55C	0C to 50C	0C to 55C		
Storage Temperature	-20C to 60C			-25C to 65C	-25 to 60C	-25C to 65C		
Vibration	5 to 55Hz 2G's for 2 hours in X,Y, and Z axis							
Shock	10G for under 12ms in the X,Y, and Z axis							
Humidity	10-95% Non-Condensing							
Protocols Supported	ASCII In/Out; EZ Protocol, Ethernet, DeviceNet Slave, and Profibus Slave for communicating to PLC							
Built-In Serial Communication Ports	Port 1: RS232 (Programming and HMI Port Only) Port 2: RS422 (1.2K, 2.4K, 4.8K, 9.6K, 19.2K, and 38.4K Baud Rates supported)							
Agency Approval	UL, CUL, CE (pending)							
External Dimensions	8.048" x 6.145" x 3.896" (204.41 x 156.08 x 98.95mm)				10.894" x 8.748" x 3.852" (276.71 x 222.20 x 97.85mm)		13.584"x10.594"x3.856" (345x269.1x97.95mm)	16.75"x13"x5.678" (425.45x330.2x144.02mm)
Weight	2 lbs				3.5 lbs		4.5 lbs	7.5 lbs

EZTouchPLC™

RAM, Flash Card and Other Accessories

Part Number	Description	Price
EZP-PANELEDIT	EZPanel Programming Software	€99
EZP-PANEL-M	Hardware User Manual	€15
EZP-RAM-1	512K RAM Card	€50
EZP-RAM-2	1MB RAM Card	€97
EZP-FLASH-1	512K Flash Card	€46
EZP-FLASH-2	1MB Flash Card	€56
EZP-FLASH-3	2MB Flash Card	€80
EZP-ETHERNET	DirectLogic Ethernet Option Interface Card	€190
EZP-ETHERPLUS	Modbus TCP/IP or DirectLogic Ethernet Option Card	€240
EZP-BAT	Replacement 1/2 AA, 3.6 volt Lithium Battery	€20
EZP-BRK-1	EZTouch optional DIN Mounting Clips (pk. of 2)	€15
EZP-COMCON3	15-pin male D-sub connectors with terminal blocks, for connecting RS422 network cable from EZTouch or EZText panels	€19
EZP-PANEL6-GSK	(6") Standard Replacement Gasket for all 6" panels	€8
EZP-PANEL8-GSK	(8") Standard Replacement Gasket	€8
EZP-PANEL10-GSK	(10") Standard Replacement Gasket	€8
EZ-PANEL-STUDS	Spare mounting studs (four with nuts)	€8
EZP-6SLIMF-GSK	(6") Slim bezel FDA replacement gasket	€8
EZP-8SLIMF-GSK	(8") Slim bezel FDA replacement gasket	€25
EZP-10SLIMF-GSK	(10") Slim bezel FDA replacement gasket	€30
EZP-15SLIMF-GSK	(15") Slim bezel FDA replacement gasket	€34
EZP-COV6	Pack of 3 protective shields for any 6" EZTouch panel	€20
EZP-COV8	Pack of 3 protective shields for any 8" EZTouch panel	€34
EZP-COV10	Pack of 3 protective shields for any 10" EZTouch panel	€38
EZP-COV15	Pack of 3 protective shields for any 15" EZTouch panel	€56

EZTouchPLC's Firmware is stored in the internal Flash memory of the panel which can be field upgraded through its programming port.

The user program resides in the battery backed RAM of the panel. A backup battery provides power to the unit when external 24VDC power input is not present. If the backup battery is removed while the unit is without external 24VDC power, the user program residing in the RAM of the unit will be lost.

Optional FLASH Card

Flash cards for EZTouchPLC are used for backup of user HMI programs. There are three sizes of flash cards available (512K, 1MB, and 2MB). When an EZTouchPLC powers up it always checks for a flash card. If present, it loads the user HMI program from the flash card into the RAM of the panel.

1. Use flash cards for backing up user HMI programs. If the user program gets corrupted you will always have a backup copy for immediate transfer to a panel without the need of a PC.
2. Take advantage of programming multiple units without a PC just by powering them up with the flash card installed. Once the unit powers up, the flash card can be removed and the user-program will reside in the RAM of the panel.
3. OEMs can distribute upgrades/updates of applications on flash cards which can be utilized by Users to transfer the updated/upgraded user-programs to the RAM of a panel without the need of a PC.

Optional RAM Card

There are two sizes of plug-in RAM cards available, 512K and 1MB RAM, for expanding the available RAM on a panel. For most applications, the available RAM is more than sufficient for typical user-programs. For applications utilizing extensive bitmaps and/or screens can take advantage of plug-in RAM cards for expanding program storage space.

Part Number	Description	Price
EZIO-M	Hardware User Manual for EZI/O Modules	€25
EZPLC-CM	Hardware User Manual for DeviceNet, Profibus and Ethernet options	€25
EZPLC-BAT	EZPLC Replacement Battery	€20
EZP-PGMCBL	Programming Cable	€20
EZIO-DUMMY	Dummy Module for Open Slots	€5
EZIO-TERM11	11 Pin Removable 3.5mm Phoenix Terminal Block	€5
EZPLC-TERM5	5 Pin Removable 3.5mm Phoenix Terminal Block	€4
EZ-DNTERM5	DeviceNet 5 Pin Field Terminal Block	€8
EZ-BRK-2	DIN clips (pk. of 4)	€34
EZ-COMCON3	15-pin male D-sub connector with terminal blocks, for connecting RS422 network cable from EZTouch or EZText panels	€19
EZ-COMCON4	9-pin female D-sub connector with terminal blocks	€19
EZP-TOUCHPLC-M	Hardware User Manual For All EZTouchPLCs	€35
EZ-TOUCHPLC-EDIT	Windows based Programming software for all EZTouchPLCs. Requires Windows 95/98/NT or 2000. Manual and CD-ROM included	€99
EZP-PGMCBL	Programming cable for setup and programming for all EZTouchPLCs. 2 m (6.56ft) RS232 cable with 15-pin D-shell male connector on one end and 9-pin D-shell female connector at the other end.	€16

Configure Your EZTouchPLC

From the most Flexible EZ I/O, Select the Modules Needed for your Applications

23 Different Mix-n-Match Plug-in I/O Modules



			Page
4 Thermocouple Input.....	EZIO-4THI	€139	9-28
High Speed Counter, 1 input/4 output	EZIO-4HSCM1	€99	9-29
High Speed Counter, 2 input/4 output	EZIO-4HSCM2	€99	9-29
8 pt 24V DC In	EZIO-8DCI	€19	9-8
8 pt 24V DC Out Source.....	EZIO-8DCOP	€19	9-9
8 pt 24V DC Out Sink	EZIO-8DCON	€19	9-10
8 pt 24V DC In Fast.....	EZIO-8HSDCI	€24	9-11
4 pt 24V DC In, 4 pt 24V DC Out Sink	EZIO-4DCI4DCON	€19	9-13
4 pt 24V DC In Standard, 4 pt 24V DC In Fast Interrupt ...	EZIO-4DCI4DCIF	€29	9-12
4 pt 24V DC In, 4 pt 24V DC Out Source	EZIO-4DCI4DCOP	€19	9-14
8 pt 110 AC In	EZIO-8ACI	€29	9-15
8 pt 110 AC Out.....	EZIO-8ACO	€29	9-16
4 pt 110 AC In, 4 pt 110 AC Out.....	EZIO-4ACI4ACO	€29	9-17
4 pt 24V DC Out Source, 4 pt 110 AC Out.....	EZIO-4DCOP4ACO	€29	9-18
4 pt 110 AC In, 4 DC Out Source.....	EZIO-4ACI4DCOP	€29	9-19
4 pt 24V DC In, 4 110 AC Out.....	EZIO-4DCI4ACO	€29	9-20
8 Analog In Voltage	EZIO-8ANIV	€99	9-24
8 Analog In Current.....	EZIO-8ANIC	€99	9-25
4 Analog In, 4 Analog Out Voltage.....	EZIO-4ANI4ANOV	€99	9-26
4 Analog In, 4 Analog Out Current.....	EZIO-4ANI4ANOC	€99	9-27
4 pt Relay Out.....	EZIO-4IORLO	€34	9-21
4 pt 110 AC In, 4 Relay Out.....	EZIO-4ACI4RLO	€39	9-22
4 pt 24V DC In Source, 4 Relay Out.....	EZIO-4DCOP4RLO	€39	9-23

Switch Settings, Status Indicators and Connections

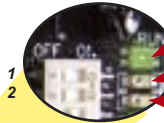
Operation Set up

SW3	SW4	Tri-Color LED	Operation
1	0	Green	Run
0	1	Red	Program
1	1	Amber	Run/Program
0	0	Off	No Operation

1
2
3
4

RS232 Programming Port and Communication Selector

SW1	SW2	PLC LED	Panel LED	RUN LED	Connection
1	0	On	Off	Off	RS232 port to PLC
0	1	Off	On	Off	RS232 port to Panel
1	1	On	On	Off	No Connection
0	0	Off	Off	On	PLC Connected to Text Panel; RS232 port not connected

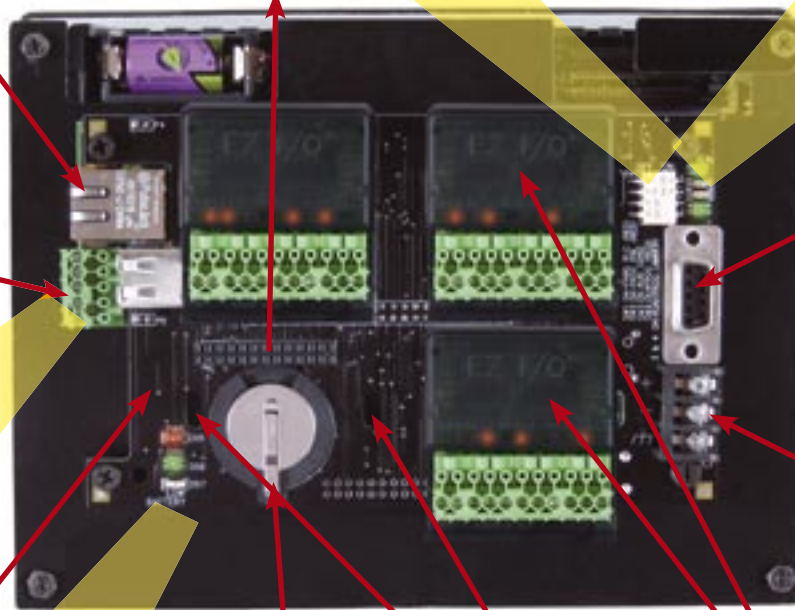
Run Mode
PLC to Touch
Panel LED
Program
PLC LED
Program
Panel LED

Optional Ethernet connectivity on Enhanced model

Port for I/O Module

RS422/485 ASCII Port

Used to send ASCII instructions to other devices

SD-
SD+
RD-
RD+

RS232 Programming Port

Used to program PLC or TextPanel

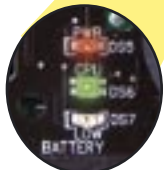
Pin #	Function
2	TXD
3	RXD
5	Logic GND
Rest	NC

24VDC Power Input

Block style connector used to connect an external 24VDC supply

3V Battery Included

Power LED CPU LED Low Battery LED



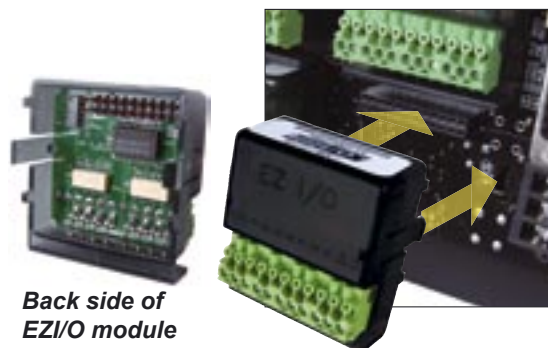
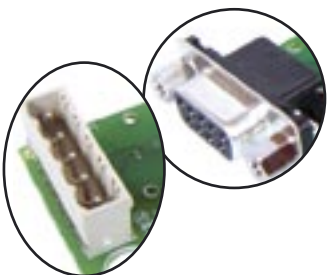
Insert I/O Modules

Snaped into the two slots

Remove I/O Modules

Removed from the slots by pressing the two clips on the side of the module.

DeviceNet, Profibus Optional Port



Back side of EZI/O module



Caution: Do not use AC output module in the bottom left slot due to height of the battery

EZTouchPLC™

6" White on Blue Panel

6" White on Blue EZTouchPLC - Slim Bezel (5.7" STN)

EZTouchPLC 6" slim bezel White on Blue panel has a 5.7" diagonal touch screen with 320x240 pixel resolution with 4 shades of blue. This panel is a new addition to the EZTouchPLC line with a STN LCD (liquid crystal display) and is available with 32 I/O (max) PLC base. I/O modules are not included with EZTouchPLC and can be purchased separately. Please refer to EZI/O section (9) which lists all the available modules along with part numbers and pricing. This panel has a very low slim profile along with a smaller footprint on enclosures.

6" White on Blue models feature:

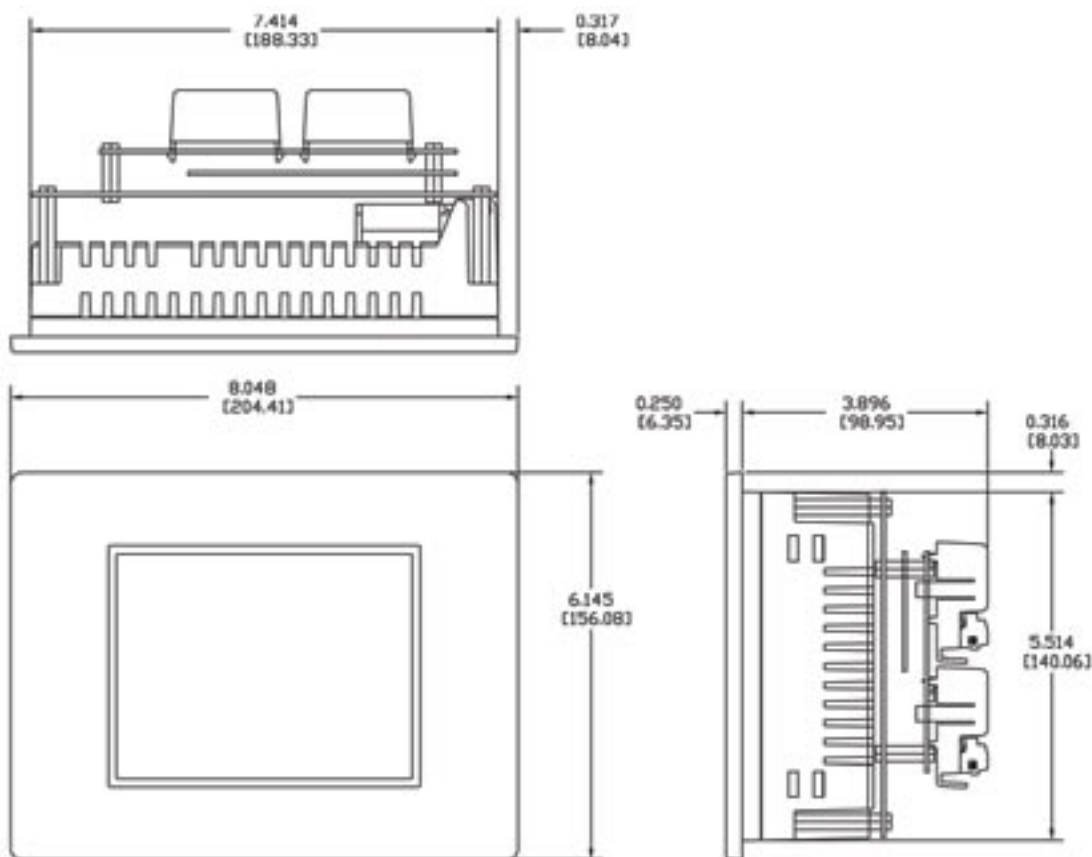
- 5.7" diagonal White on Blue STN LCD
- 4 shades of blue
- NEMA 1, FDA compliant material
- 320x240 pixel resolution
- 25,000 hour expected bulb half-life
- 1/4" gasket and four DIN mounting clips for NEMA 1
- 256K Display RAM, not expandable
- 48 touch cells (8x6)
- 3.896" (98.95mm) installed depth

32 I/O EZPLC BASE

- Total Program/Data Memory 64KB
- 3ms Scantime for 1K Instruction
- RS232 & RS422/485 Ports
- ASCII In/Out
- Built-in Calendar/Clock



Model Number	Interface	Price
EZP-S6W-RS-PLC	6" White on Blue, 32 I/O EZPLC base, DC Power	€510
EZP-S6W-RS-PLC-E	6" White on Blue, 32 I/O EZPLC base w/Ethernet, DC Power	€609
EZP-S6W-RS-PLC-D	6" White on Blue, 32 I/O EZPLC base w/DeviceNet, DC Power	€589
EZP-S6W-RS-PLC-P	6" White on Blue, 32 I/O EZPLC base w/Profibus, DC Power	€639



EZTouchPLC™ 6" Mono Slim Bezel Panels

6" Monochrome EZTouchPLC - Slim Bezel (5.7" STN)

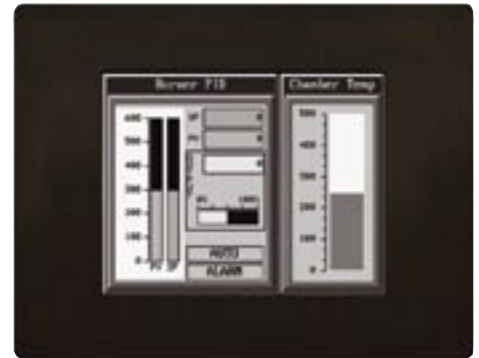
EZTouchPLC's 6" slim bezel panels have a 5.7" diagonal touch screen with 320x240 pixel resolution. These panels have an STN LCD (liquid crystal display) with 16 shades of gray and are available with 32 I/O (max) PLC base. I/O modules are not included with EZTouchPLC and can be purchased separately. Please refer to EZI/O section (9) which lists all the available modules along with part number and pricing. All these panels have a very low slim profile along with a smaller footprint on enclosures.

6" Mono models feature:

- 5.7" diagonal mono STN LCD 16 shades
- NEMA 1, FDA compliant material
- 320x240 pixel resolution
- 25,000 hour expected bulb half-life
- 48 touch cells (8x6)
- 1/4" gasket and four DIN mounting clips for NEMA 1
- 3.896" (98.95mm) installed depth
- 192 touch cells
- 512K Expandable RAM for HMI

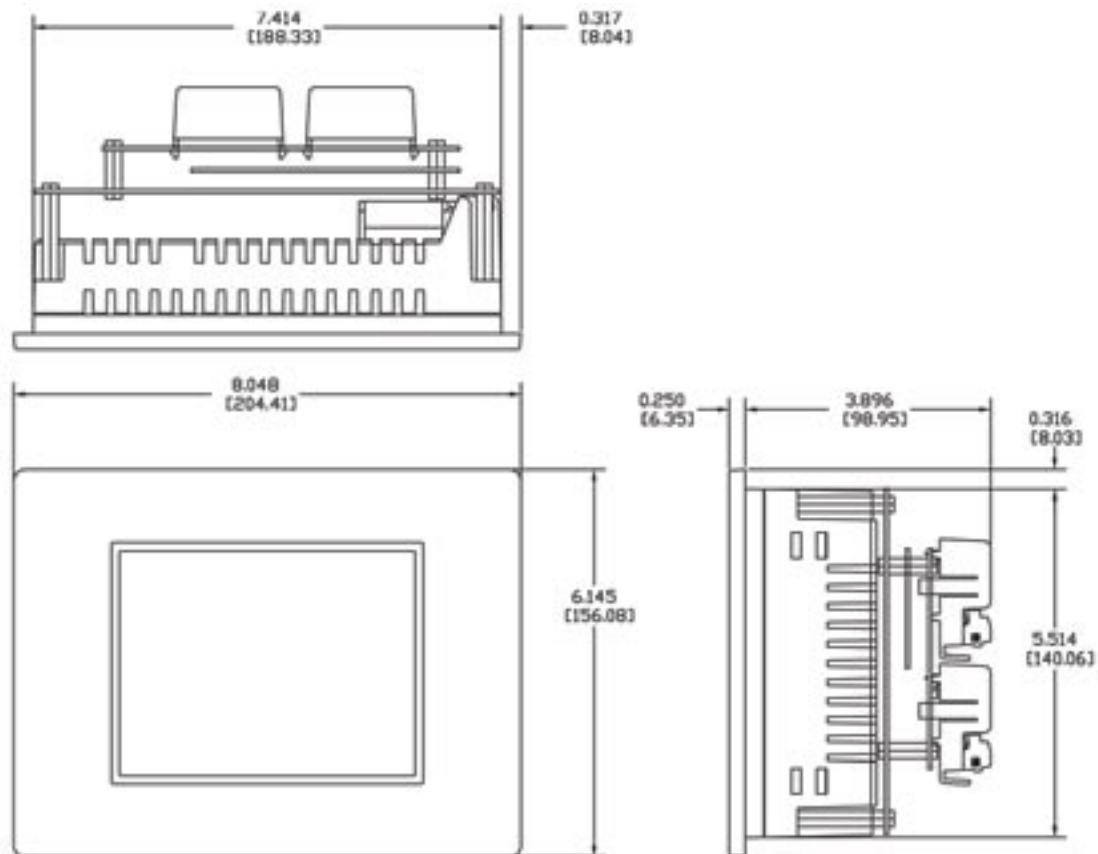
32 I/O EZPLC BASE

- Total Program/Data Memory 64KB
- 3ms Scantime for 1K Instruction
- RS232 & RS422/485 Ports
- ASCII In/Out
- Built-in Calendar/Clock



EZTouchPLC

Model Number	Interface	Price
EZP-S6M-FS-PLC	6" STN Mono, 32 I/O EZPLC base, DC Power	€613
EZP-S6M-FS-PLC-E	6" STN Mono, 32 I/O EZPLC base w/Ethernet, DC Power	€712
EZP-S6M-FS-PLC-D	6" STN Mono, 32 I/O EZPLC base w/DeviceNet, DC Power	€692
EZP-S6M-FS-PLC-P	6" STN Mono, 32 I/O EZPLC base w/Profibus, DC Power	€742



EZTouchPLC™ 6" STN Color Slim Bezel Panels

6" Color EZTouchPLC - Slim Bezel (5.7" STN)

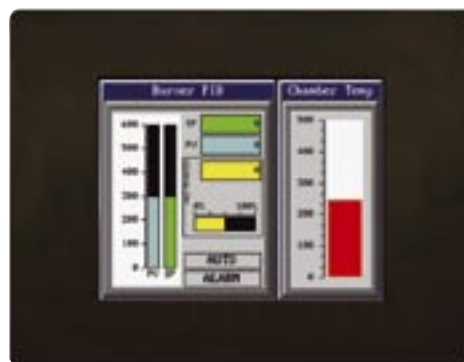
EZTouchPLC 6" slim bezel panels have a 5.7" diagonal touch screen with 320x240 pixel resolution. These panels have an STN Color LCD (liquid crystal display) and is available with 32 I/O (max) PLC base. I/O modules are not included with EZTouchPLC and can be purchased separately. Please refer to EZI/O section (9) which lists all the available modules along with part number and pricing. All these panels have a very low slim profile along with a smaller footprint on enclosures.

6" STN Color feature:

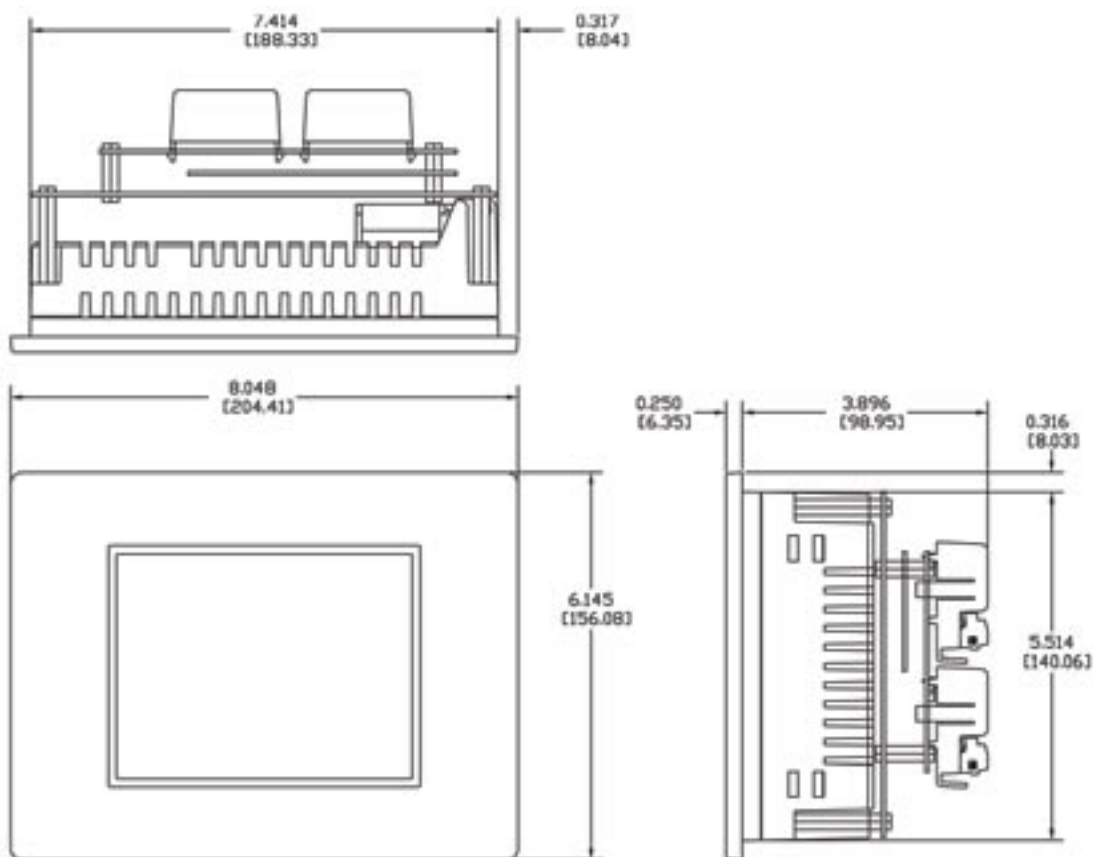
- 5.7" diagonal color STN LCD
- Low-profile slim bezel design
- 128 colors
- NEMA 1, FDA compliant material
- 320x240 pixel resolution
- 512K RAM expandable to 1.5MB, display only
- 512K, 1MB or 2MB option flash card for display memory backup
- 25,000 hour expected bulb half-life
- 192 touch cells (16x12)
- 1/4" gasket and four DIN mounting clips for NEMA 1

32 I/O EZPLC BASE

- Total Program/Data Memory 64KB
- 3ms Scan time for 1K Instruction
- RS232 & RS422/485 Ports
- ASCII In/Out
- Built-in Calendar/Clock



Model Number	Interface	Price
EZP-S6C-FS-PLC	6" STN Color, 32 I/O EZPLC base, DC Power	€910
EZP-S6C-FS-PLC-E	6" STN Color, 32 I/O EZPLC base w/Ethernet, DC Power	€1009
EZP-S6C-FS-PLC-D	6" STN Color, 32 I/O EZPLC base w/DeviceNet, DC Power	€989
EZP-S6C-FS-PLC-P	6" STN Color, 32 I/O EZPLC base w/Profibus, DC Power	€1139



EZTouchPLC™

6" TFT Color Slim Bezel Panels

6" Color EZTouchPLC - Slim Bezel (5.7" TFT)

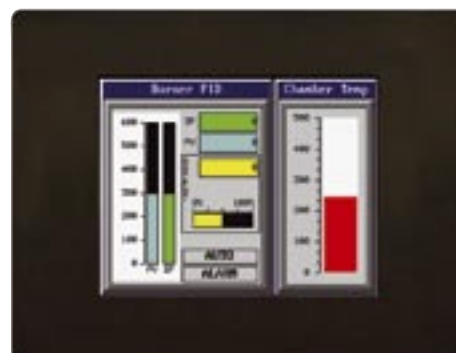
EZTouchPLC 6" slim bezel panels have a 5.7" diagonal touch screen with 320x240 pixel resolution. This model is a new addition to EZTouch Enhanced line with a TFT LCD (liquid crystal display) and is available with 32 I/O (max) PLC base. I/O modules are not included with EZTouchPLC and can be purchased separately. Please refer to EZI/O section (9) which lists all the available modules along with part number and pricing. All these panels have a very low slim profile along with a smaller footprint on enclosures.

6" STN Color models feature:

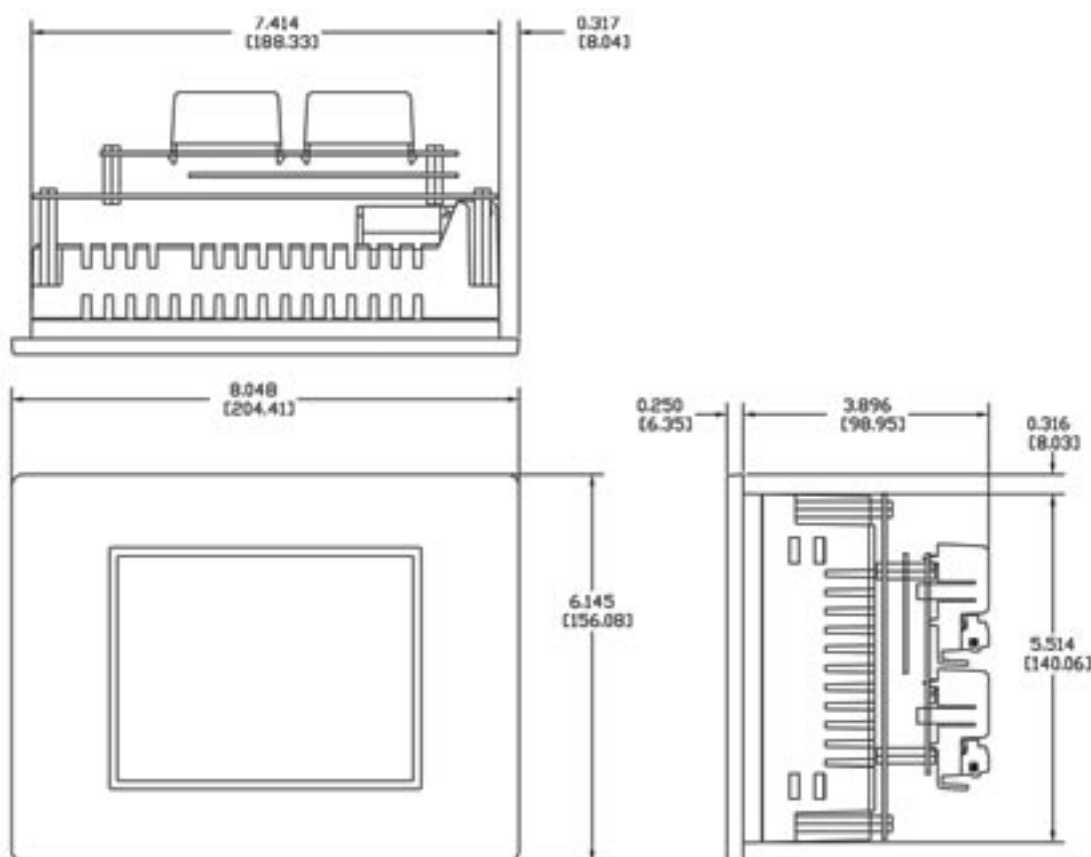
- 5.7" diagonal color STN LCD
- Low-profile slim bezel design
- 128 colors
- NEMA 1, FDA compliant material
- 320x240 pixel resolution
- 512K RAM expandable to 1.5MB
- 512K, 1MB or 2MB option flash card for memory backup
- 25,000 hour expected bulb half-life
- 192 touch cells (16x12)
- 1/4" gasket and four DIN mounting clips for NEMA 1
- 3.896" (98.95mm) installed depth

32 I/O EZPLC BASE

- Total Program/Data Memory 64KB
- 3ms Scan time for 1K Instruction
- RS232 & RS422/485 Ports
- ASCII In/Out
- Built-in Calendar/Clock



Model Number	Interface	Price
EZP-T6C-FS-PLC	6" STN Color, 32 I/O EZPLC base, DC Power	€1110
EZP-T6C-FS-PLC-E	6" STN Color, 32 I/O EZPLC base w/Ethernet, DC Power	€1209
EZP-T6C-FS-PLC-D	6" STN Color, 32 I/O EZPLC base w/DeviceNet, DC Power	€1189
EZP-T6C-FS-PLC-P	6" STN Color, 32 I/O EZPLC base w/Profibus, DC Power	€1239



EZTouchPLC™ 8" STN Color Slim Bezel Panels

8" Color EZTouchPLC - Slim Bezel (8.2" STN)

EZTouchPLC 8" color slim bezel panels have an 8.2" diagonal touch screen, with a 640x480 pixel resolution and feature a color STN LCD (liquid crystal display) and is available with 48 I/O (max) PLC base. I/O modules are not included with EZTouchPLC and can be purchased separately. Please refer to EZI/O section (9) which lists all the available modules along with part number and pricing. All models feature a low-profile slim bezel design that provides a small footprint on enclosures.

Features

- 8.2" diagonal color STN LCD, 128 colors
- Low-profile slim bezel design
- NEMA 4, 4X (indoor) or NEMA 1, FDA compliant material
- 640x480 pixel resolution
- 512K RAM expandable to 1.5MB
- 512K, 1MB or 2MB option flash card for memory backup
- 25,000 hour expected bulb half-life
- 192 touch cells (16x12)
- 1/4" gasket and four DIN mounting clips for NEMA 1
- 1/4" O-ring gasket and eight mounting studs for NEMA 4, 4X (indoor)
- 3.852" (97.85mm) installed depth

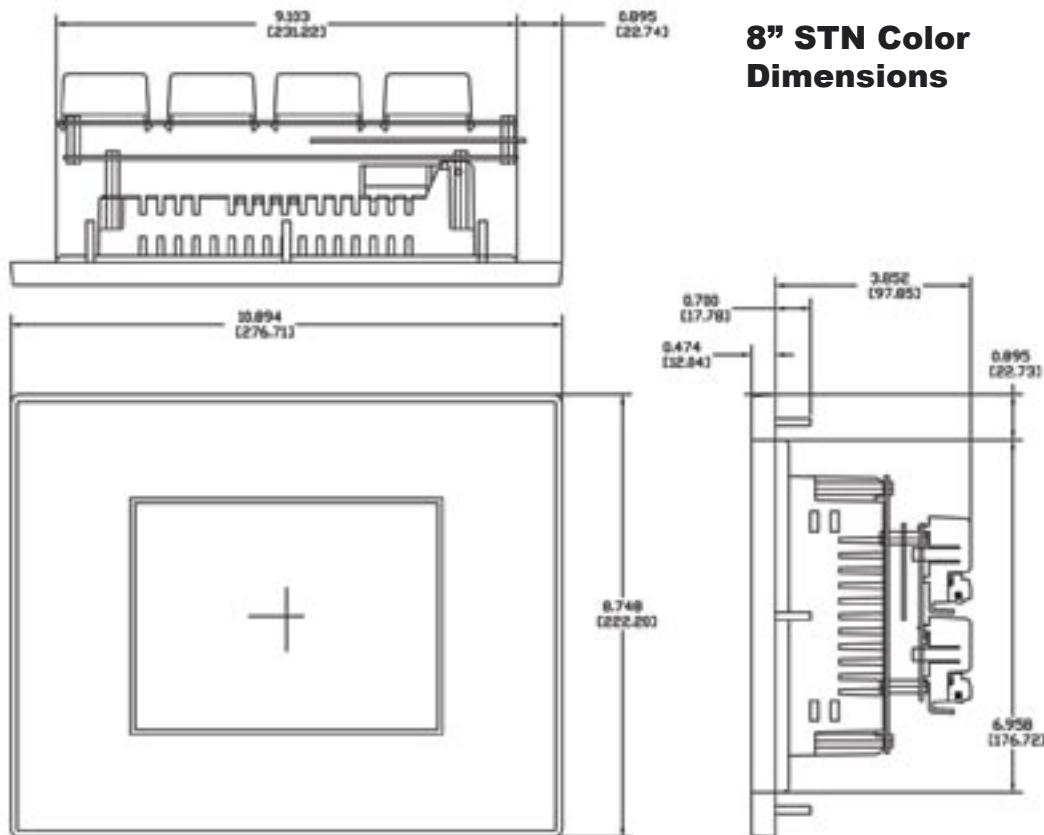
64 I/O EZPLC BASE

- Total Program/Data Memory 64KB
- 3ms Scantime for 1K Instruction
- RS232 & RS422/485 Ports
- ASCII In/Out
- Built-in Calendar/Clock

Model Number	Interface	Price
EZP-S8C-FS-PLC	8" STN Color, 64 I/O EZPLC base, DC Power	€1099
EZP-S8C-FS-PLC-E	8" STN Color, 64 I/O EZPLC base w/Ethernet, DC Power	€1198
EZP-S8C-FS-PLC-D	8" STN Color, 64 I/O EZPLC base w/DeviceNet, DC Power	€1178
EZP-S8C-FS-PLC-P	8" STN Color, 64 I/O EZPLC base w/Profibus, DC Power	€1228



8" STN Color Dimensions



EZTouchPLC™ 8" TFT Color Slim Bezel Panels

8" Color EZTouchPLC - Slim Bezel (8.2" TFT)

EZTouchPLC 8" slim bezel panels have a 8.2" diagonal touch screen with 640x480 pixel resolution. This model is a new addition to EZTouch PLC line with a TFT LCD (liquid crystal display) and is available with 48 I/O (max) PLC base. I/O modules are not included with EZTouchPLC and can be purchased separately. Please refer to EZI/O section (9) which lists all the available modules along with part number and pricing. All these panels have a very low slim profile along with a smaller footprint on enclosures.

Features

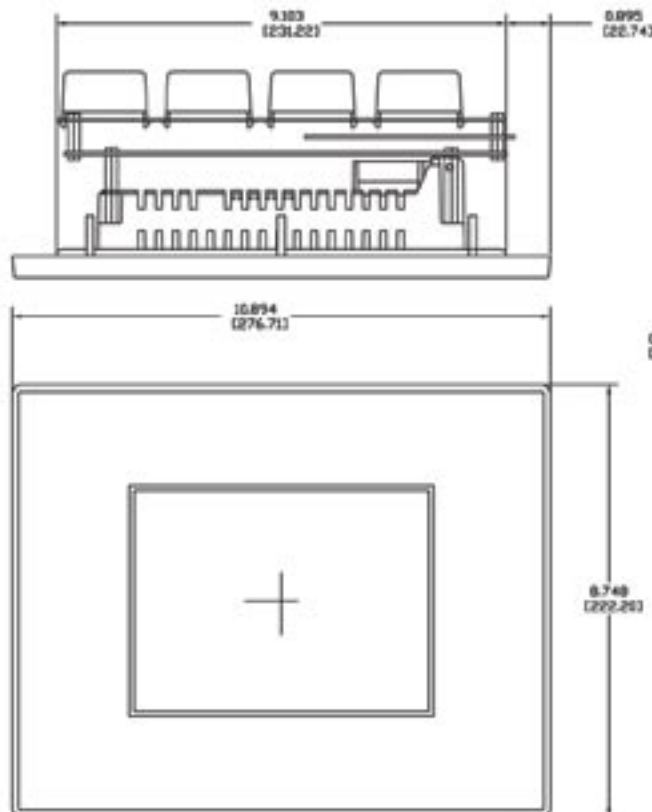
- 8.2" diagonal color TFT LCD, 128 colors
- NEMA 4, 4X (indoor) or NEMA 1, FDA compliant material
- 640x480 pixel resolution
- 512K RAM expandable to 1.5MB
- 512K, 1MB or 2MB option flash card for memory backup
- Ethernet card optional (EZ-ETHERNET)
- MODBUS TCP/IP card optional (EZ-ETHERPLUS)
- 25,000 hour expected bulb half-life
- 192 touch cells (16x12)
- 1/4" gasket and four DIN mounting clips for NEMA 1
- 1/4" O-ring gasket and eight mounting studs for NEMA 4, 4X (indoor)
- 3.852" (97.85mm) installed depth

64 I/O EZPLC BASE

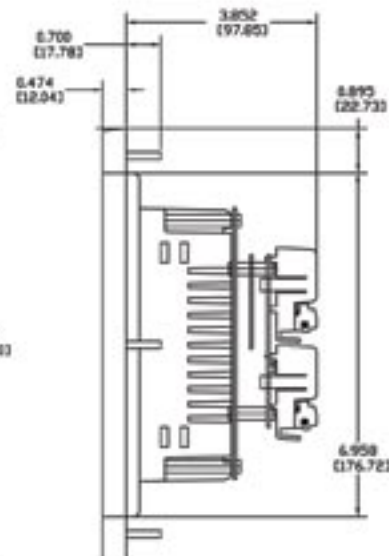
- Total Program/Data Memory 64KB
- 3ms Scantime for 1K Instruction
- RS232 & RS422/485 Ports
- ASCII In/Out
- Built-in Calendar/Clock



Model Number	Interface	Price
EZP-T8C-FS-PLC	8" TFT Color, 64 I/O EZPLC base, DC Power	€1549
EZP-T8C-FS-PLC-E	8" TFT Color, 64 I/O EZPLC base w/Ethernet, DC Power	€1648
EZP-T8C-FS-PLC-D	8" TFT Color, 64 I/O EZPLC base w/DeviceNet, DC Power	€1628
EZP-T8C-FS-PLC-P	8" TFT Color, 64 I/O EZPLC base w/Profibus, DC Power	€1678



8" TFT Color Dimensions



EZTouchPLC™ 10" TFT Color Slim Bezel Panels

10" Color EZTouchPLC - Slim Bezel (10.4" TFT)

The 10" color EZTouchPLC slim bezel panels have an 10.4" diagonal touch screen, with a 640x480 pixel resolution and feature a TFT LCD (liquid crystal display) and is available with 48 I/O (max) PLC base. I/O modules are not included with EZTouchPLC and can be purchased separately. Please refer to EZI/O section (9) which lists all the available modules along with part number and pricing. All models feature a low-profile slim bezel design that provides a small footprint on your enclosure.

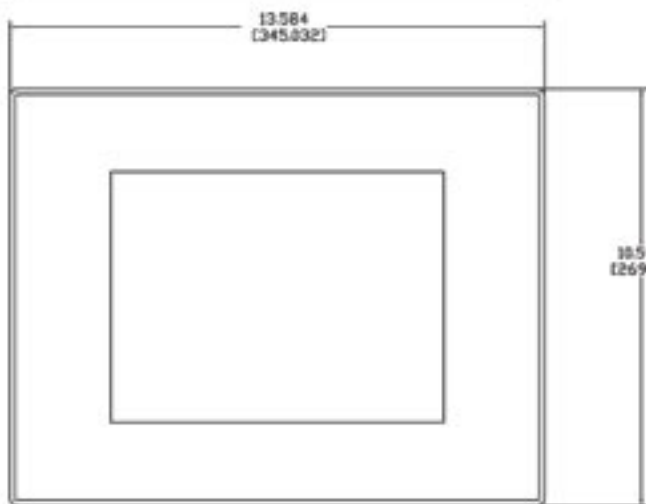
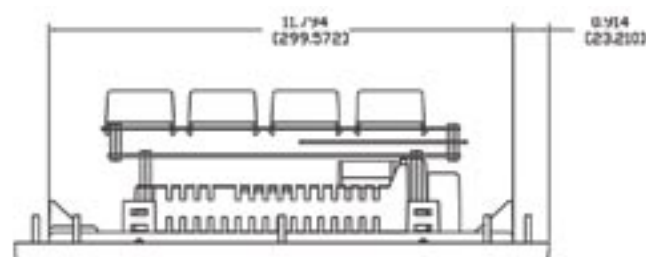
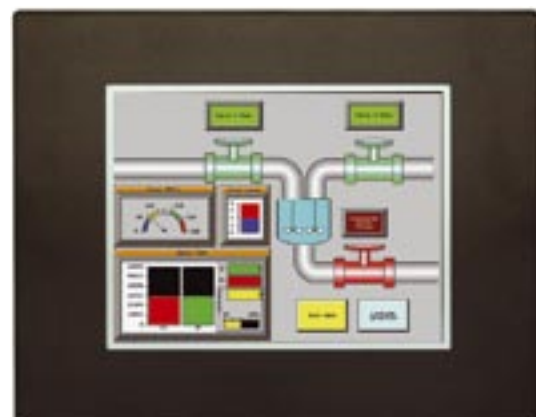
Features

- 10.4" diagonal color TFT LCD, 128 colors
- NEMA 4, 4X (indoor) or NEMA 1, FDA compliant material
- 640x480 pixel resolution
- 512K RAM expandable to 1.5MB
- 512K, 1MB or 2MB option flash card for memory backup
- 25,000 hour expected bulb half-life
- 192 touch cells (16x12)
- 1/4" gasket and four DIN mounting clips for NEMA 1
- 1/4" O-ring gasket and eight mounting studs for NEMA 4, 4X (indoor)
- 3.856" (97.95mm) installed depth

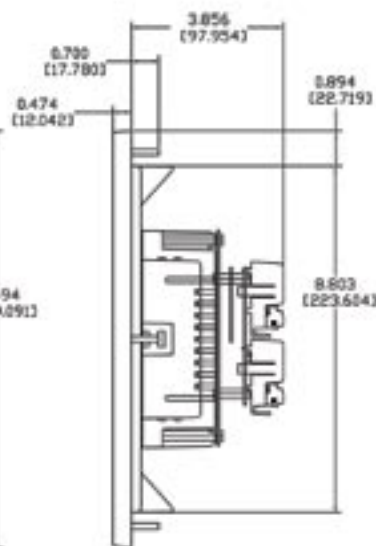
64 I/O EZPLC BASE

- Total Program/Data Memory 64KB
- 3ms Scantime for 1K Instruction
- RS232 & RS422/485 Ports
- ASCII In/Out
- Built-in Calendar/Clock

Model Number	Interface	Price
EZP-T10C-FS-PLC	10" TFT Color, 64 I/O EZPLC base, DC Power	€1849
EZP-T10C-FS-PLC-E	10" TFT Color, 64 I/O EZPLC base w/Ethernet, DC Power	€1948
EZP-T10C-FS-PLC-D	10" TFT Color, 64 I/O EZPLC base w/DeviceNet, DC Power	€1928
EZP-T10C-FS-PLC-P	10" TFT Color, 64 I/O EZPLC base w/Profibus, DC Power	€1978



10" TFT Color Dimensions



EZTouchPLC™ 15" TFT Color Slim Bezel Panels

15" Color EZTouchPLC - Slim Bezel (15.0" TFT)

The 15" color EZTouchPLC slim bezel panels have a 15.0" diagonal touch screen, with a 640x480 pixel resolution and feature a TFT LCD (liquid crystal display) and is available with 48 I/O (max) PLC base. I/O modules are not included with EZTouchPLC and can be purchased separately. Please refer to EZI/O section (9) which lists all the available modules along with part number and pricing. All models feature a low-profile slim bezel design that provides a small footprint on your enclosure.

Features

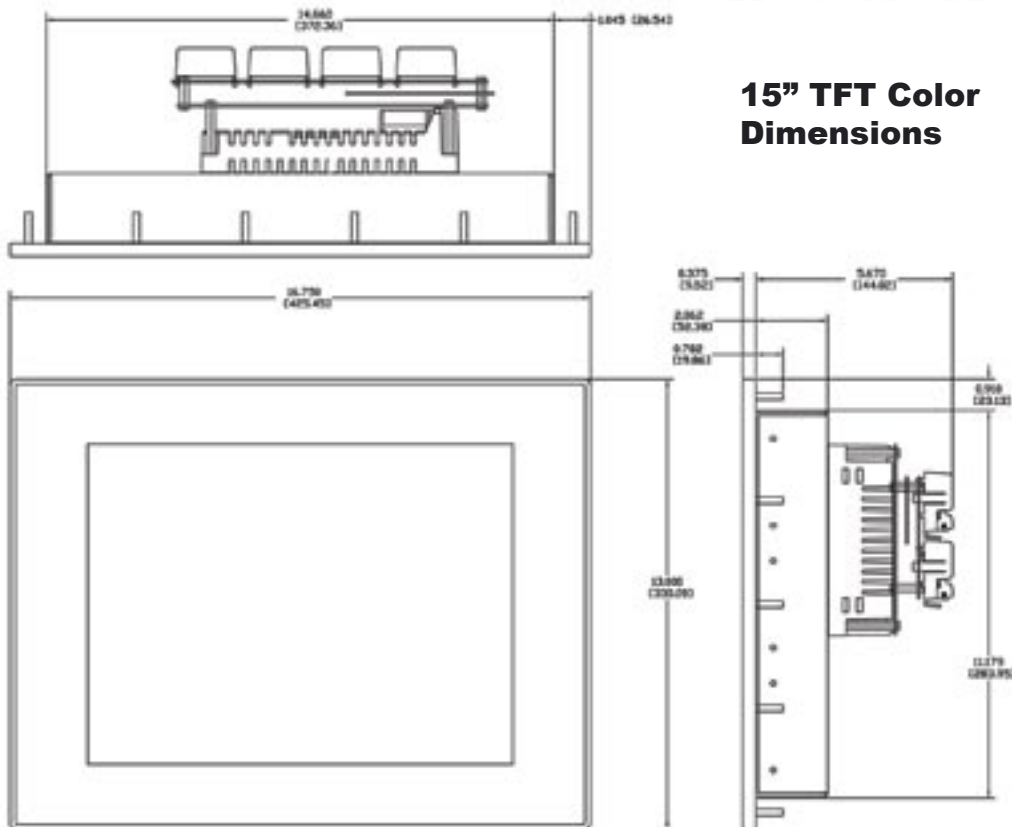
- 15.0" diagonal color TFT LCD, 128 colors
- NEMA 1, FDA compliant material
- 640x480 pixel resolution
- 1MB RAM expandable to 1.5MB or 2MB
- 1MB or 2MB option flash card for memory backup
- 25,000 hour expected bulb half-life
- 192 touch cells (16x12)
- 1/4" gasket and four DIN mounting clips for NEMA 1
- 5.670" (144.02mm) installed depth

64 I/O EZPLC BASE

- Total Program/Data Memory 64KB
- 3ms Scantime for 1K Instruction
- RS232 & RS422/485 Ports
- ASCII In/Out
- Built-in Calendar/Clock



Model Number	Interface	Price
EZP-T15C-FS-PLC	15" TFT Color, 64 I/O EZPLC base, DC Power	€2649
EZP-T15C-FS-PLC-E	15" TFT Color, 64 I/O EZPLC base w/Ethernet, DC Power	€2748
EZP-T15C-FS-PLC-D	15" TFT Color, 64 I/O EZPLC base w/DeviceNet, DC Power	€2728
EZP-T15C-FS-PLC-P	15" TFT Color, 64 I/O EZPLC base w/Profibus, DC Power	€2778



EZAutomation

THE MOST SENSIBLE AUTOMATION PRODUCTS
DIRECT FROM THE FACTORY

with worldwide local support

Product Overview

Designed and built in USA by



EZPanel™ **ENHANCED**

The Most SENSIBLE
PLC Touch Panels

Enhanced
Drivers



Starting at
€399

EZText PLC™

Text Panel w/
Built-in PLC



Starting at
€272

EZText™ **ENHANCED**

The Original EZText - Enhanced
with Vacuum Fluorescent Option



Starting at
€169

EZTouch PLC™

Touch Panel w/
Built-in PLC



Starting at
€548

NEW

EZMarquee™

The Most Practical
Industrial Marquees
at SENSIBLE Prices



Starting at
€349

EZTouchscreen CE Computer™

The Most
SENSIBLE Stable
Platform CE Computer



Starting at
€599

NEW

EZPLC™

The Most SENSIBLE Micro
Modular PLC Ever Built



Starting at
€149

NEW

EZCE Touchpanel™

The Most SENSIBLE Open
Platform PLC Touch Panel
Internet Browser & Windows CE File Viewer



AMD 333 MHz
CE Processor
Starting at
€699

NEW

EZ I/O™

The Most SENSIBLE Real World
I/O for all PLCs

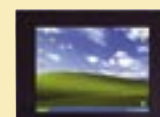


Starting at
€19

NEW

EZMonitor™

The Most SENSIBLE
Flat Panel Monitors



Starting at
€999