

# USER MANUAL

---

Version 1.0.1 - March 2015



## Truck Manager







## Copyright

EVS Broadcast Equipment SA– Copyright © 2003-2015. All rights reserved.

## Disclaimer

The information in this manual is furnished for informational use only and subject to change without notice. While every effort has been made to ensure that the information contained in this user manual is accurate, up-to-date and reliable, EVS Broadcast Equipment cannot be held responsible for inaccuracies or errors that may appear in this publication.

## Improvement Requests

Your comments will help us improve the quality of the user documentation. Do not hesitate to send improvement requests, or report any error or inaccuracy on this user manual by e-mail to [doc@evs.com](mailto:doc@evs.com).

## Regional Contacts

The address and phone number of the EVS headquarters are usually mentioned in the Help > About menu in the user interface.

You will find the full list of addresses and phone numbers of local offices either at the end of this user manual (for manuals on hardware products) or at the following page on the EVS website: <http://www.evs.com/contacts>.

## User Manuals on EVS Website

The latest version of the user manual, if any, and other user manuals on EVS products can be found on the EVS download center, on the following webpage: <http://www.evs.com/downloadcenter>.





# Table of Contents

<b>TABLE OF CONTENTS</b> .....	<b>III</b>
<b>1. INTRODUCTION</b> .....	<b>1</b>
1.1. Product Overview .....	1
1.2. Requirements .....	2
<b>2. INSTALLATION AND LICENSING</b> .....	<b>3</b>
2.1. Software Installation .....	3
2.2. Managing the Truck Manager License .....	12
<b>3. STARTUP AND SHUTDOWN</b> .....	<b>14</b>
3.1. Starting Up Truck Manager .....	14
3.2. Shutting down Truck Manager .....	18
<b>4. WIZARD PANE</b> .....	<b>20</b>
4.1. Overview on Wizard .....	20
4.2. Devices Selection .....	21
4.3. Main Settings .....	26
4.4. Network Settings .....	27
4.5. Summary .....	29
<b>5. MAIN APPLICATION WINDOW</b> .....	<b>30</b>
5.1. User Interface .....	30
5.2. Device Area .....	31
5.2.1. Overview .....	31
5.2.2. Global Operations .....	33
5.2.3. Individual Operations .....	40
5.2.4. Associating Offline Devices to Online Devices .....	42
5.3. Configuration Area .....	47
5.3.1. Overview .....	47
5.3.2. Infrastructure Configuration .....	49
5.3.3. Product Configuration .....	50
5.3.4. Main Device Menu .....	51
5.4. Additional Functions .....	53
5.4.1. Error Message Manager .....	53
5.4.2. About Window .....	54
5.4.3. Updating License Key .....	55



# 1. Introduction

## 1.1. Product Overview

The production setup has become more and more IT-based, which is increasingly complex and time-consuming.

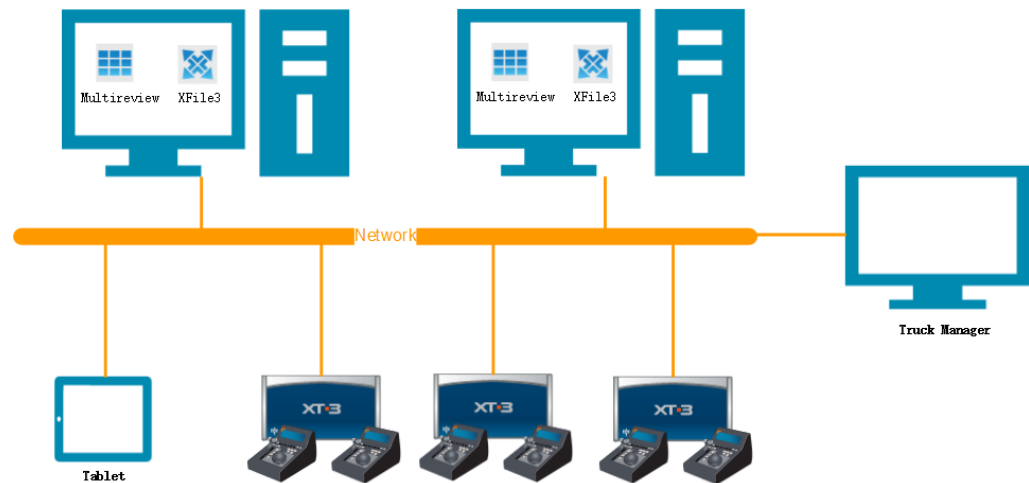
Truck Manager aims at reducing the configuration and support time of EVS products in truck environment.

Truck Manager can automatically see every detected EVS product present on a setup. Users can modify parameters and then apply the configuration. Finally, a new configuration will be applied to each associated EVS product. Afterward, the technical staff is able to save the global configuration to a USB stick for future use.

The current concerned products are:

- EVS series servers;
- Multicam;
- XCast;
- XFile3;
- MultiReview;

The following diagram shows the overall architecture of the whole system:



## 1.2. Requirements

### Software Requirements

- Microsoft.Net Framework 4.5
- Supported Multicam Version: 12.05.60

### Hardware Requirements

- OS: Window7 64bits or 32-bits
- Bi-Core CPU



## 2. Installation and Licensing

### 2.1. Software Installation

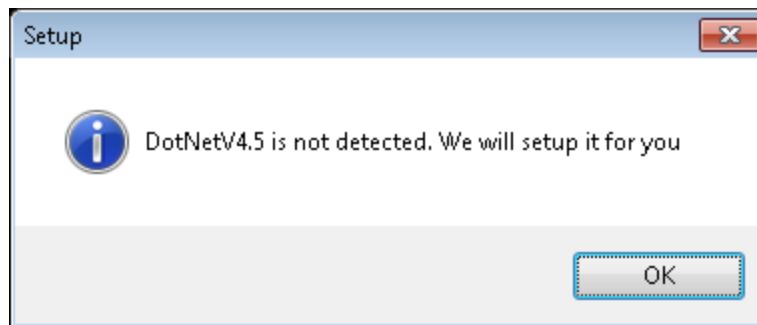
#### Microsoft.NET Framework Installation

When clicking the Truck Manager installation package, you will meet one of the following situations:

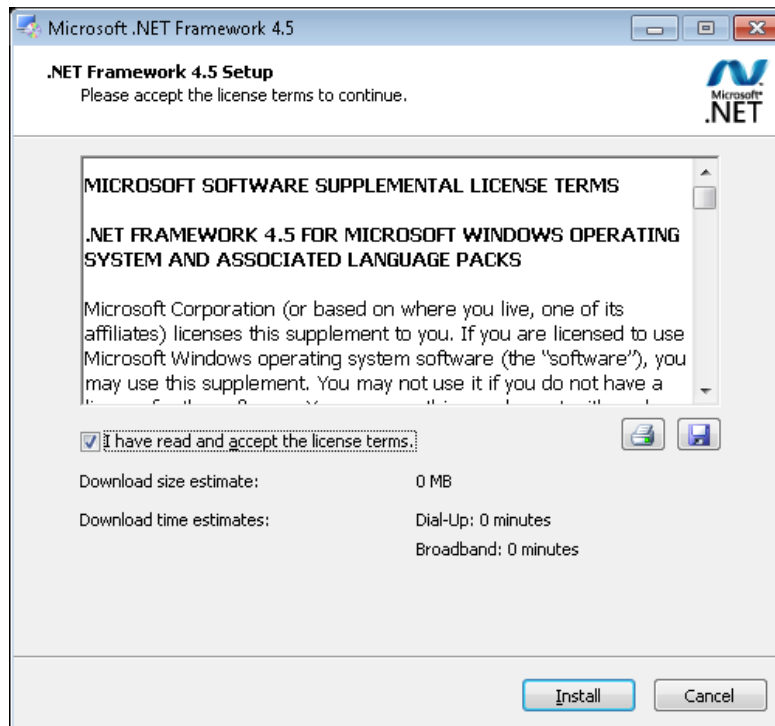
- If Microsoft.NET Framework 4.5 has already been installed, the installation wizard will directly start with the Truck Manager installation, referring to section "Truck Manager Installation" on page 6.
- If Microsoft.NET Framework 4.5 has not been installed, the Microsoft.NET Framework 4.5 installation will be started prior to installing the Truck Manager application.

#### Microsoft.NET Framework 4.5 Installation Process

1. Double click the Truck Manager installation package and click **OK** in the Setup window.

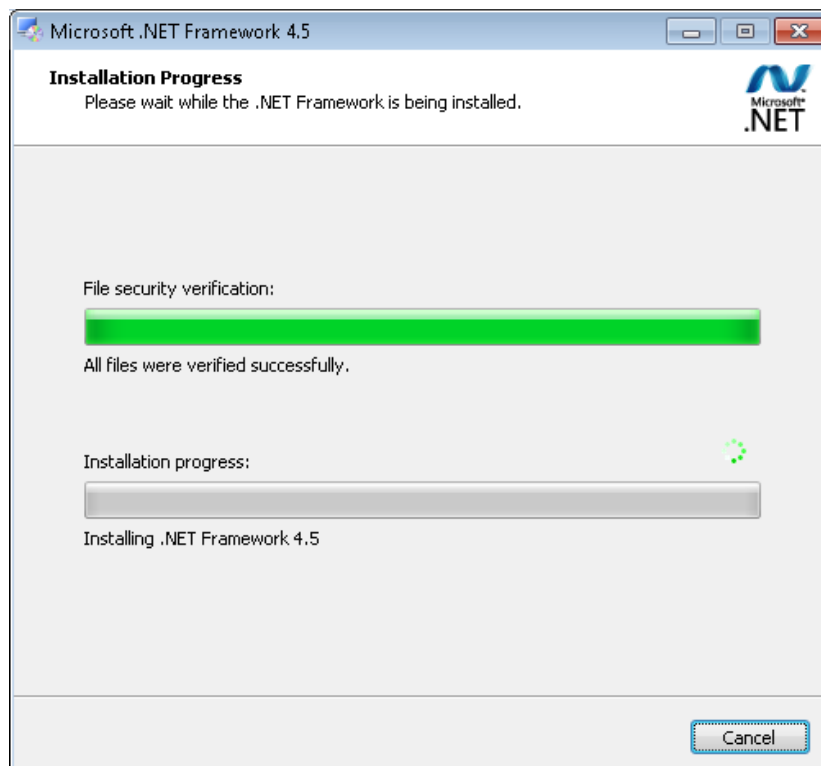


2. Select **I have read and accept the license terms** and click **Install**.

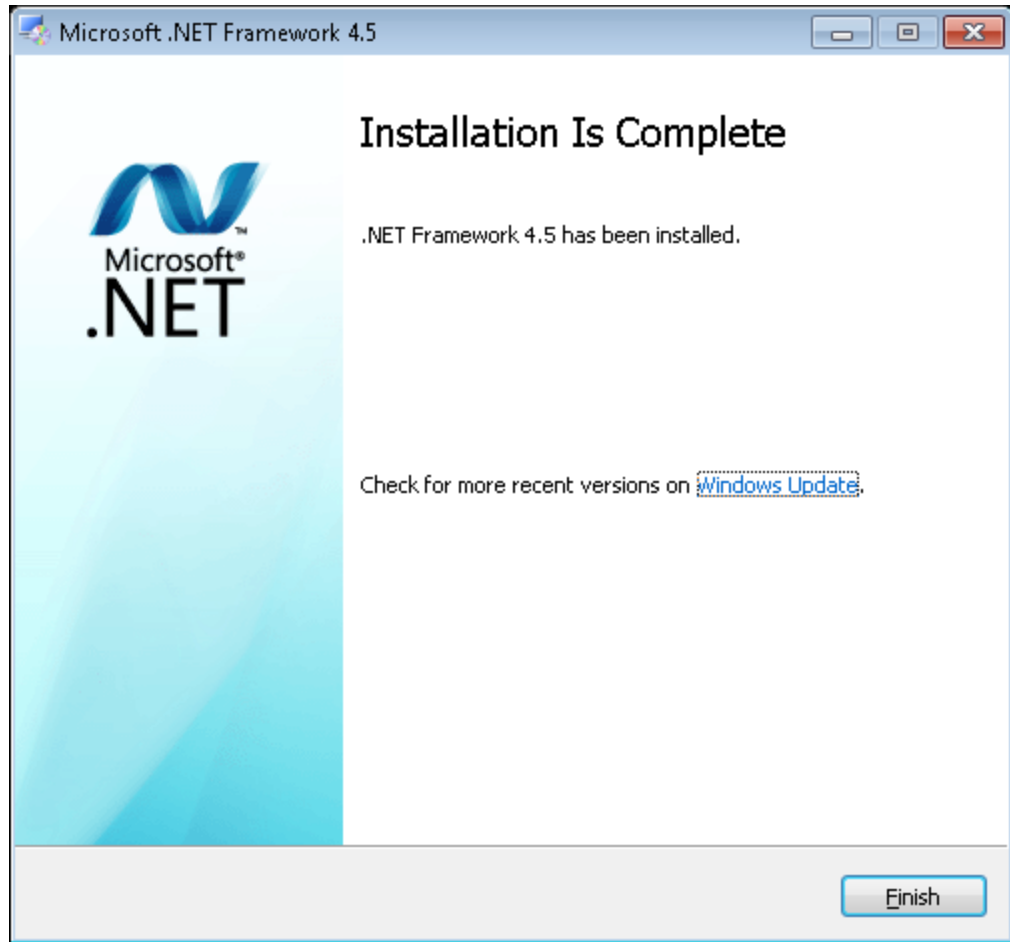


Microsoft .NET Framework 4.5 Installation Process window opens.

Wait a couple of seconds until installation is completed.



3. Click **Finish** to close Microsoft .NET Framework 4.5 and then proceed to [Truck Manager Installation](#).



## Truck Manager Installation

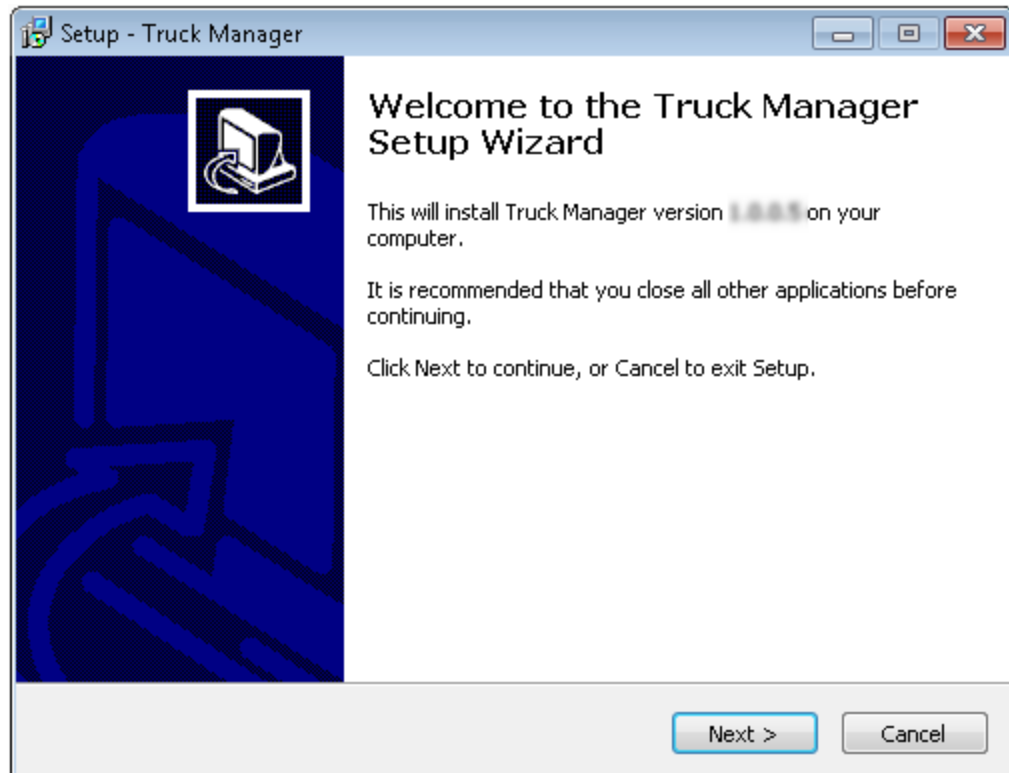
The installation package provides a single installer for the Truck Manager suite.

 TruckManagerInstaller.exe

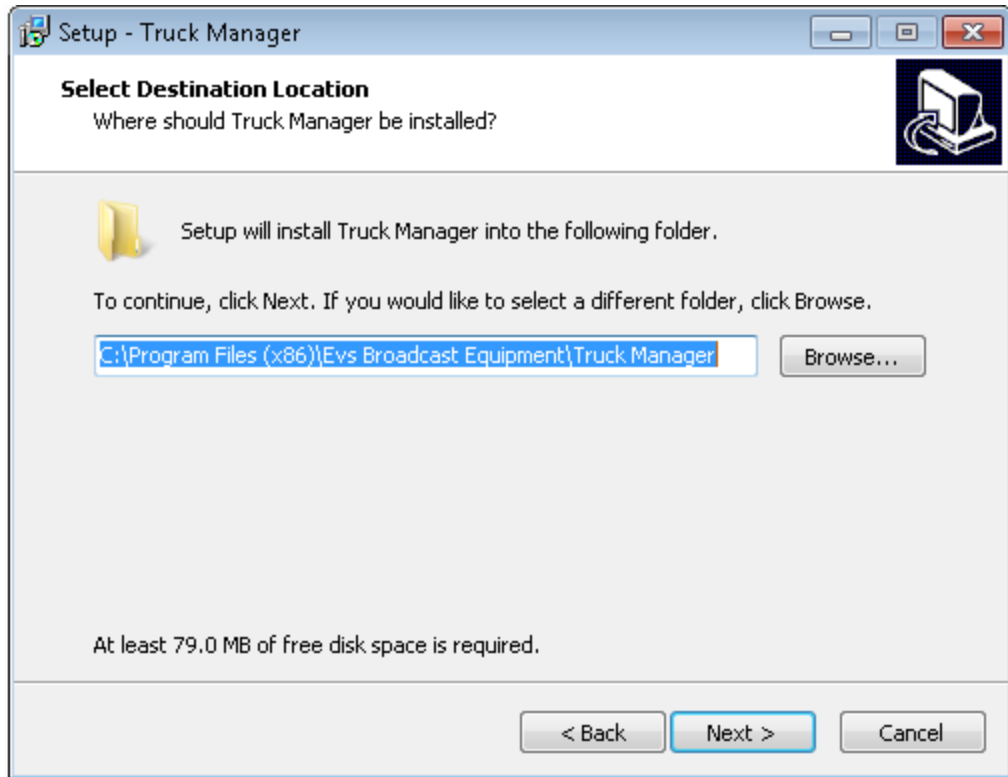
To install the Truck Manager suite, proceed as follows:

1. Run Truck Manager installer and then follow the steps of the Setup wizard.

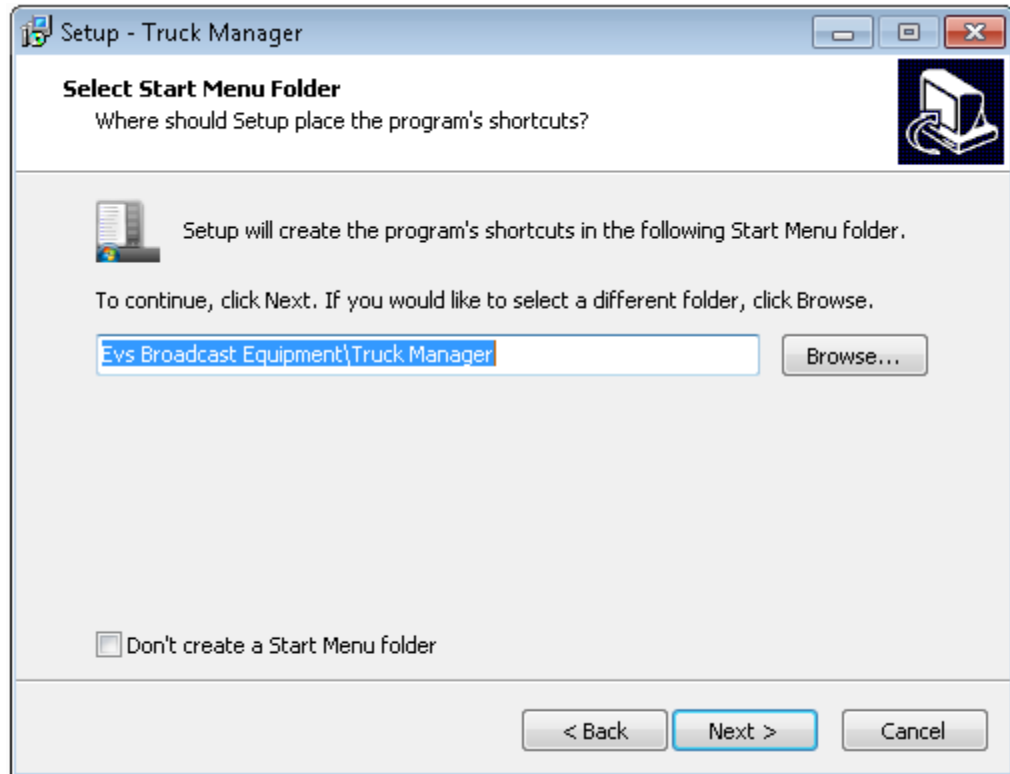
In the Welcome window, click **Next**.



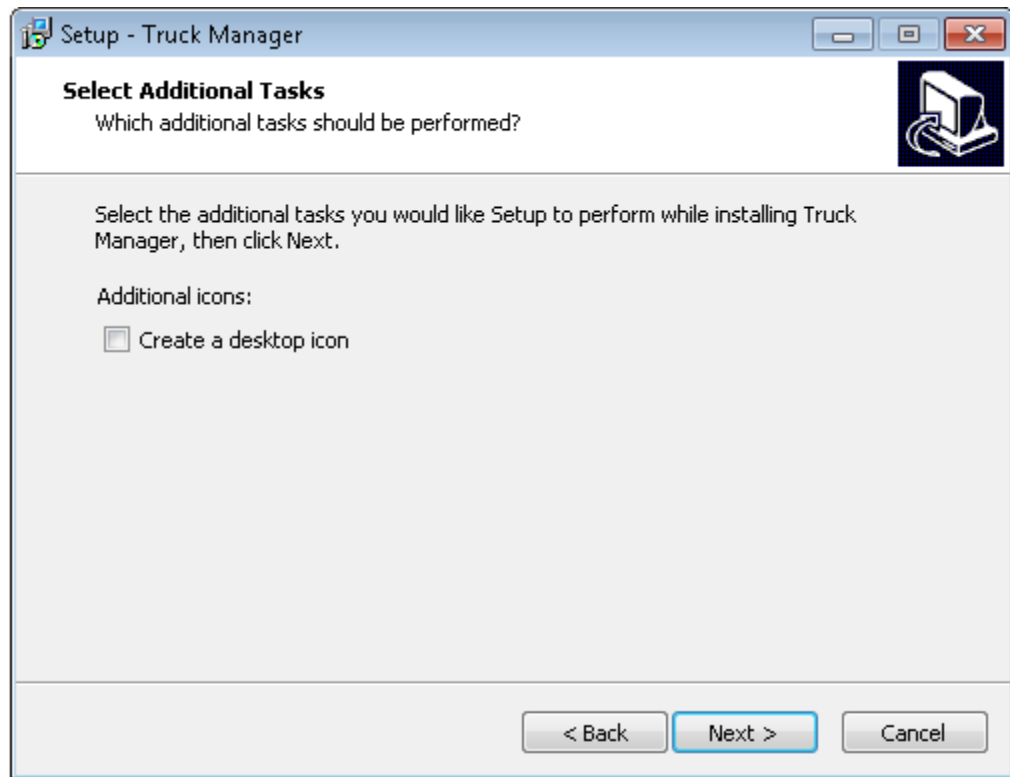
2. Click **Browse** to select a folder where Truck Manager should be installed and Click **Next**.



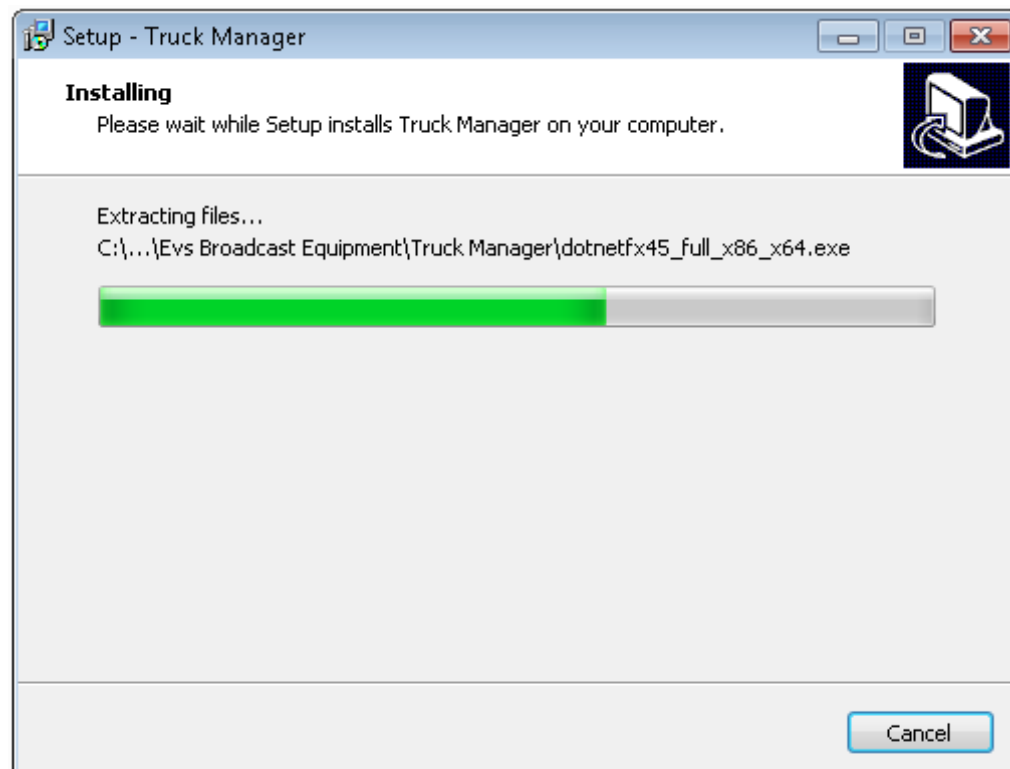
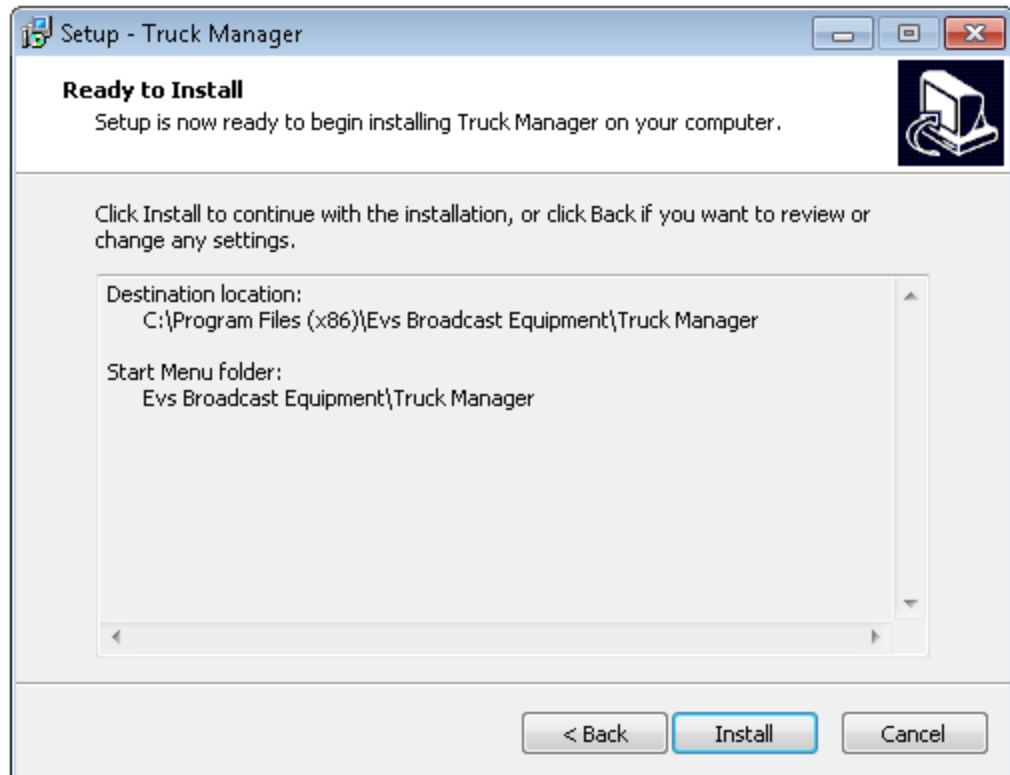
3. The user is allowed to perform the following two actions:
- Create a start menu folder: Select **Don't create a Start Menu Folder** option and click **Browse** to select a start menu folder to save program shortcuts and click **Next**.
  - Not Create a start menu folder: Keep **Don't create a Start Menu Folder** option unselected and click **Next**.



4. Select the check box to create a desktop icon and click **Next**.

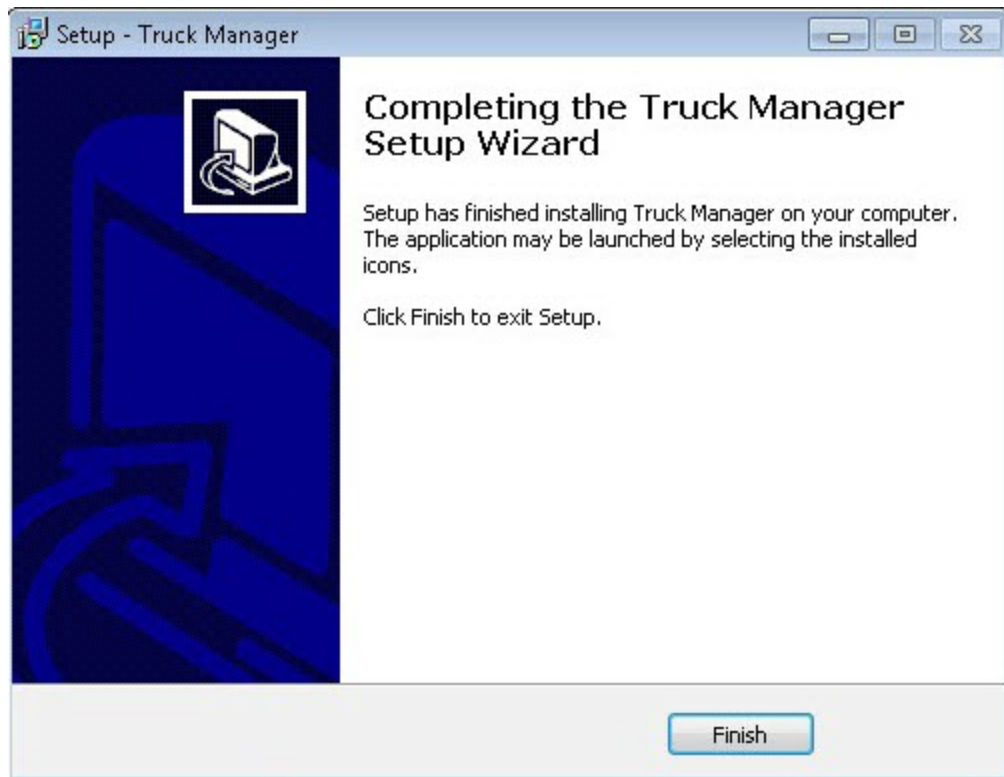


5. Click **Install** and wait until the installation is completed. This can last a few seconds.





6. Click **Finish**.



Note that a shortcut of Truck Manager has been automatically created on the desktop if you have selected the **Create a desktop icon** in [Step 5](#). The Truck Manager icon is the following:



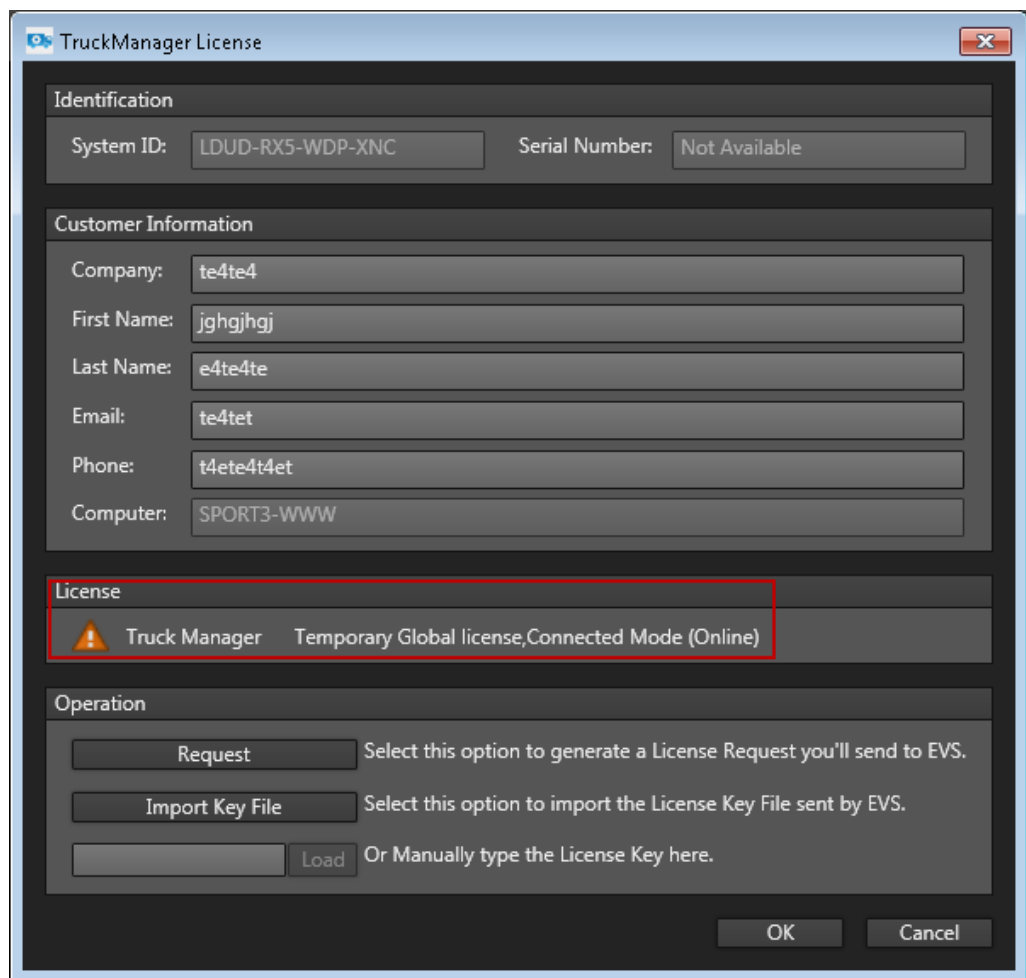
## 2.2. Managing the Truck Manager License

### Introduction

The Truck Manager application is managed through XSecure license keys. The user is allowed to add a new license key or extend the validity of a temporary license key.

Adding a new license key is a prerequisite prior to running the Truck Manager application.

If you attempt to run the Truck Manager application without a valid license, the Truck Manager License window will pop up with a warning in the **License** area. You need to [request a new license key](#).



The screenshot shows the 'TruckManager License' dialog box. It is divided into four main sections:

- Identification:** System ID: LDUD-RX5-WDP-XNC, Serial Number: Not Available
- Customer Information:** Company: te4te4, First Name: jghgjhgj, Last Name: e4te4te, Email: te4tet, Phone: t4ete4t4et, Computer: SPORT3-WWW
- License:** (Highlighted with a red box) Shows a warning icon and the text: Truck Manager Temporary Global license, Connected Mode (Online)
- Operation:** Contains three buttons: 'Request' (Select this option to generate a License Request you'll send to EVS.), 'Import Key File' (Select this option to import the License Key File sent by EVS.), and 'Load' (Or Manually type the License Key here.).

At the bottom right, there are 'OK' and 'Cancel' buttons.

### License Type

Two kinds of licenses are available.

- License Disconnected Mode: Only offline devices are available in Truck Manager.
- License Connected Mode: Only online devices are available in Truck Manager.



## How to Request a New License Key

To request a new license key, proceed as follows:

1. Fill in customer information in the Truck Manager License window.

Customer Information	
Company:	EVS
First Name:	Wang
Last Name:	Xi
Email:	x.wang@nbsystems.tv
Phone:	110
Computer:	XWA

2. Click **Request** in the lower left corner of the Truck Manager License window.  
This will generate an XML file that you must send to your EVS support representative.
3. Select the location where you would like to save that file, and click the **Save** button.
4. Send this file to your support contact at EVS support representative, specifying which new license keys or license key extensions you require.

## How to Import Key File

To import key file, proceed as follows:

1. After receiving the XML file you have requested, copy that XML file in a directory that is visible by the computer where XSecure is installed (using a USB key for instance or your LAN network)
2. Click **Import Key File** button in XSecure and select the license key file to be imported. The customer information is updated based on the new license key.

## How to Load License Key Manually

To load a license key manually, type the license key in the **License Key Loading** area and click **Load**.

JV7P-2R5-WMI-D5M	Load	Or Manually type the License Key here.
------------------	------	--

## 3. Startup and Shutdown

### 3.1. Starting Up Truck Manager

#### Introduction

The Truck Manager application is composed by Wizard and Main Application.

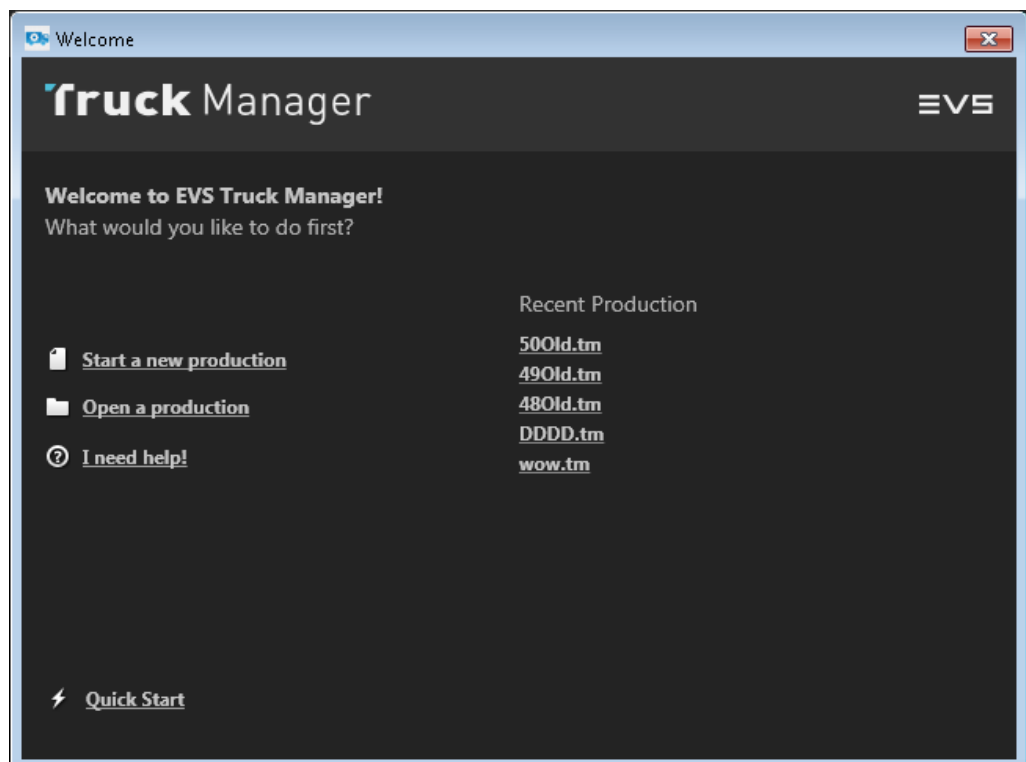
Wizard allows the user to define the infrastructure settings.

Main Application applies the infrastructure settings, allows the user to modify the configurations, and then applies them to the devices.

#### Opening the Truck Manager

Run the Truck Manager application.

This opens a Welcome window.







You can perform the following five actions.

#### Starting a New Production


Starting a new production allows users to create a new production, define the setup in the Wizard pane and apply the new configuration to the devices in Truck Manager.

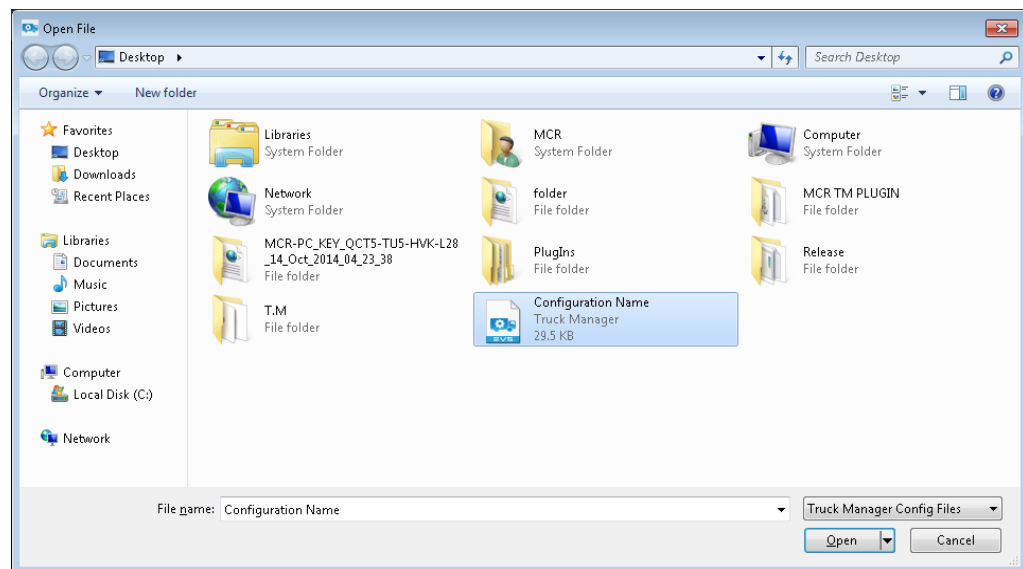
To start a new production, proceed as follows:

1. Click .
2. Define your setup in the "Wizard Pane".  
Click  or  to switch the tabs in the Wizard.
3. Click  in the Summary tab to apply all the settings defined in the Wizard to the devices in Truck Manager.

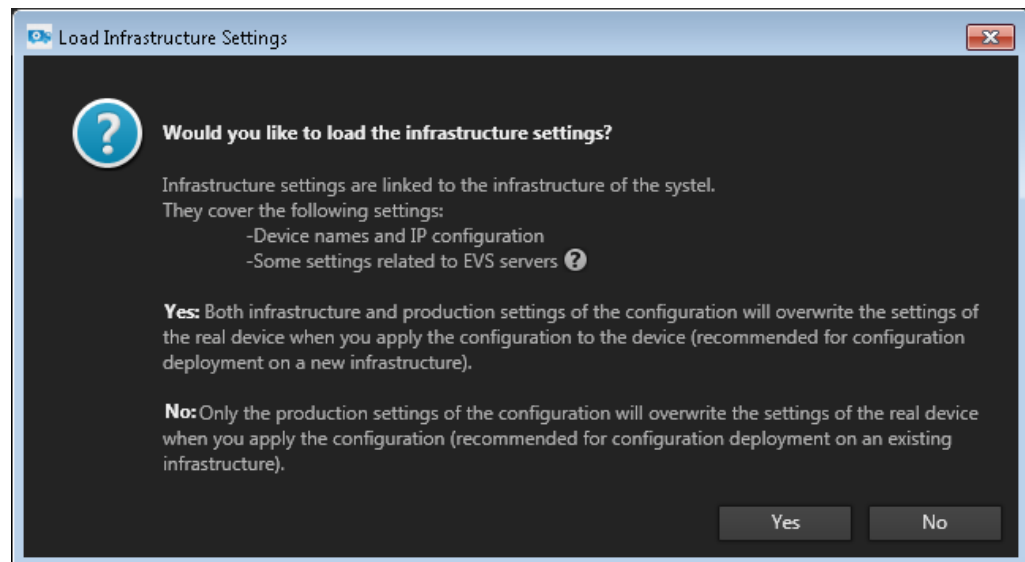
## Opening a Production

Opening a production allows users to open an existing production and apply the production to the devices in Truck Manager.

1. Click .  
The Open File window will pop up.
2. Select the production configuration file in the local computer .  
Click **Open**.



3. Choose either option.
  - Click **Yes**: Both infrastructure and production settings of the configuration will overwrite the settings of the real device when you apply the configuration to the device (recommended for configuration deployment on a new infrastructure).
  - Click **No**: Only the production settings of the configuration will overwrite the settings of the real device when you apply the configuration (recommended for configuration deployment on an existing infrastructure).



4. The user directly goes to "Main Application Window".  
You can also open a production by double clicking a production file.

**Tip**

After launching Truck Manager using the Open a Production command, all devices in Truck Manager are in offline mode.  
To associate the device, refer to [Associating Offline Devices to Online Devices](#).

## Opening Directly the Wizard Pane

The **Quick Start** option allows users to skip the Startup pane and directly open the Wizard pane.

All EVS devices discovered on the network and their infrastructure settings will be added into Truck Manager.

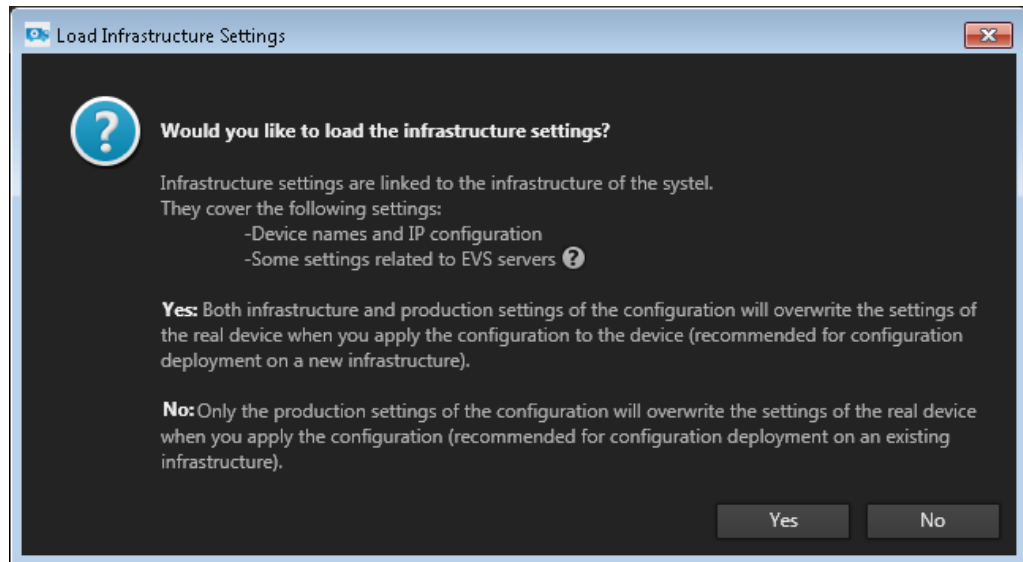
## Opening the Recent Production

The Recent Production area gives you a direct access to the local configuration files you have recently created or edited.

To open Truck Manager through Recent Production, proceed as follows:

1. Click a production in the Recent Production list.

2. Choose either option.
  - Click **Yes**: Both infrastructure and production settings of the configuration will overwrite the settings of the real device when you apply the configuration to the device (recommended for configuration deployment on a new infrastructure).
  - Click **No**: Only the production settings of the configuration will overwrite the settings of the real device when you apply the configuration (recommended for configuration deployment on an existing infrastructure).



3. The user directly goes to [the Truck Manager Application](#).

**Tip**

After launching Truck Manager by Recent Production in the Startup, all the devices in Truck Manager are in offline mode.


To associate the device, refer to [Associating Offline Devices to Online Devices](#).

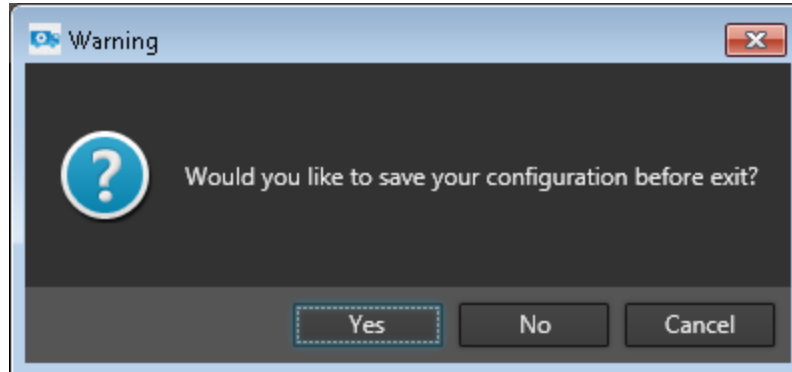
## Accessing the User Manual

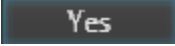
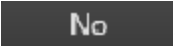

I Need Help option allows users to open the Truck Manager user manual in PDF.

## 3.2. Shutting down Truck Manager

### Introduction

When the user clicks  to shut down Truck Manager, a Warning window will pop up to enable the user to save the current configuration.



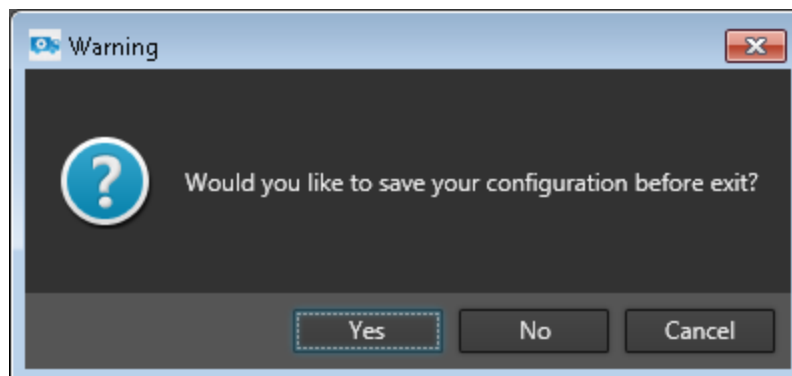
- Click : Save the current configuration and shutdown Truck Manager.
- Click : Exit Truck Manager without saving.
- Click : Go back to Truck Manager.

### Saving the Current Configuration

Saving the current configuration is saving all the configurations in Truck Manager as a local file.

To save the current configuration, proceed as follows:

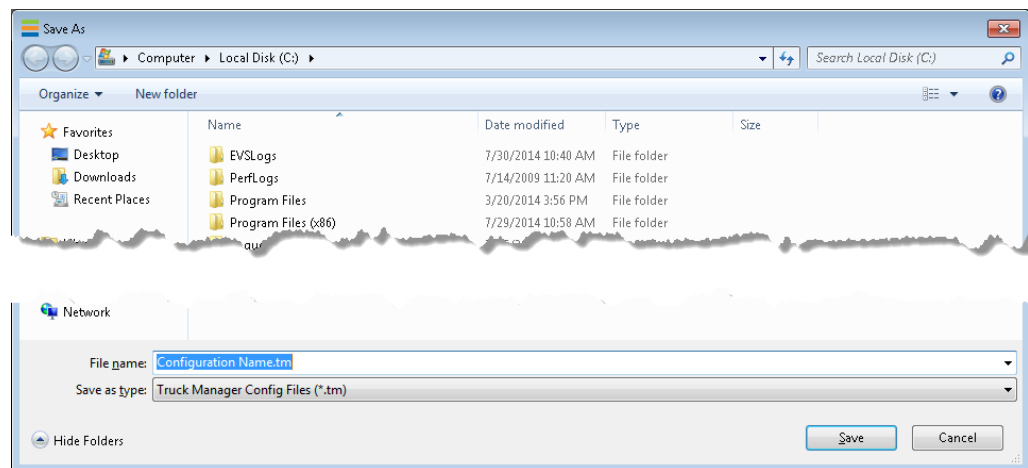
1. Click  in the Warning window.



A Save As window pops up.



2. Select the requested destination in the local computer.



3. Type a new configuration name.

4. Click **Save**.

## 4. Wizard Pane

### 4.1. Overview on Wizard

The user can define the setup in the Wizard pane, which is applied in the Main Application window.

It includes the following four tabs.

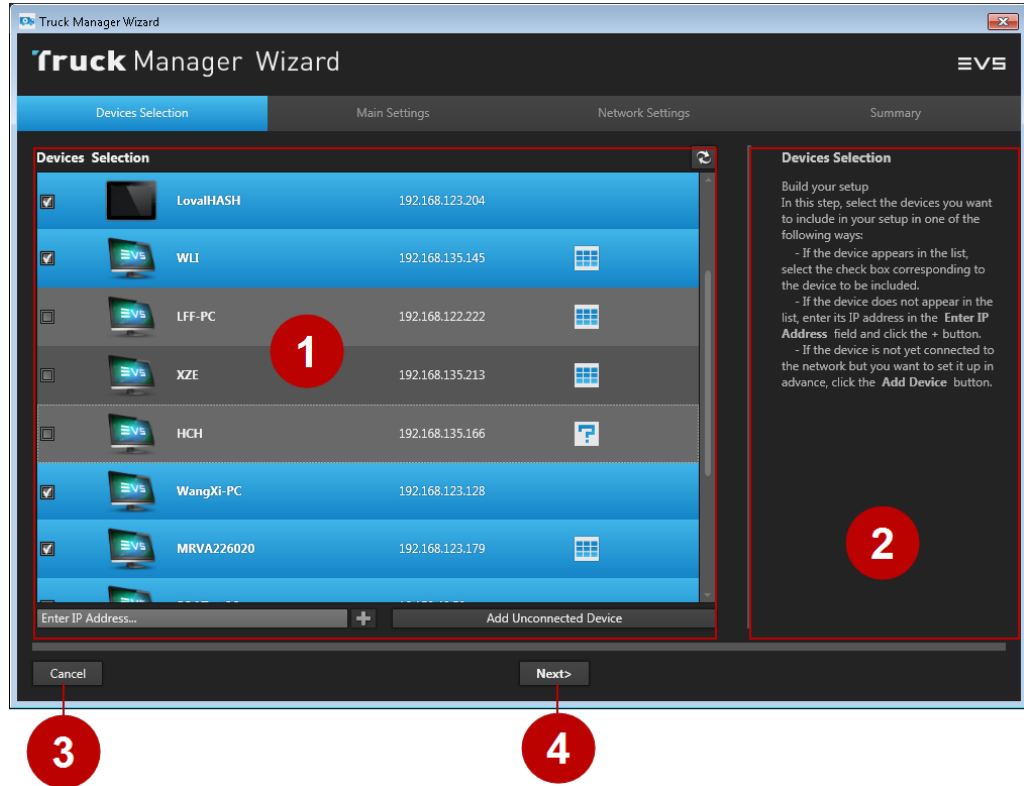
Tab	Description
<b>Devices Selection</b>	Enables the user to select the devices, referring to "Devices Selection" on page 21.
<b>Main Settings</b>	Enables the user to define the video and audio setting applicable for EVS video servers, referring to "Main Settings" on page 26.
<b>Network Settings</b>	Enables the user to define the settings for the various local network applicable in Configuration area of the Main Application window, referring to "Network Settings" on page 27.
<b>Summary</b>	Enables the user to review the setup defined in the wizard, referring to "Summary" on page 29.

## 4.2. Devices Selection

### Devices Selection Tab

The Devices Selection tab allows users to select the devices and that will be presented in the Main Application window.

The screenshot below shows the various areas of Devices Selection tab.

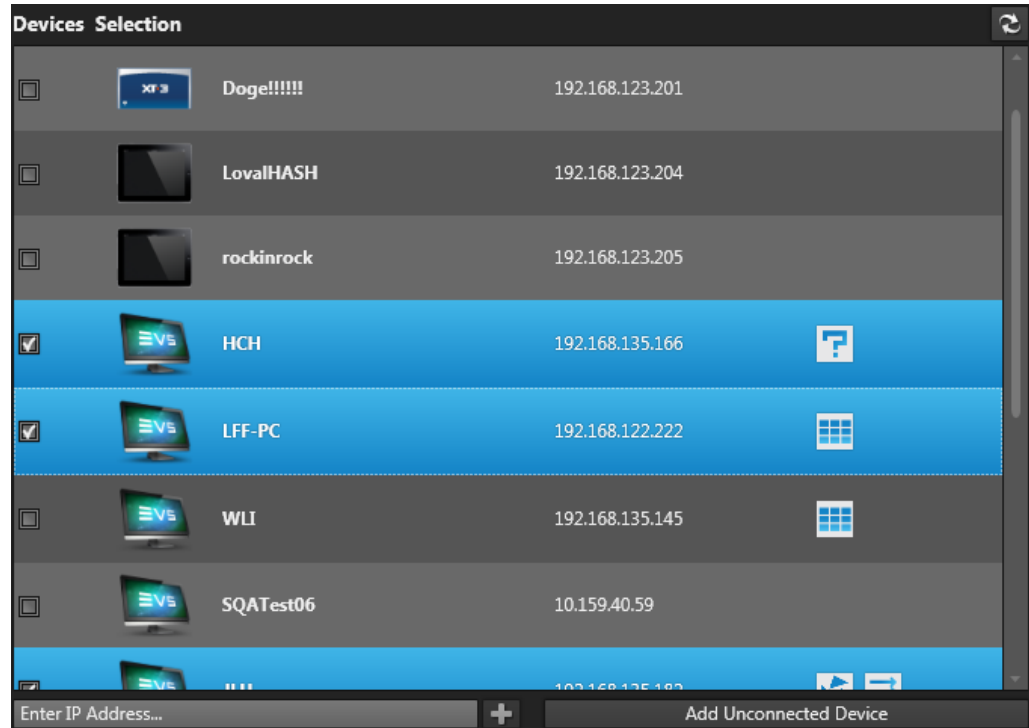


Area	Name	Description
1	<b>Devices Selection Area</b>	Enables the user to select the devices.
2	<b>Operation Tips Area</b>	Explains the ways to build the setup.
3	<b>Cancel button</b>	Enables the user to exit Truck Manager.
4	<b>Next button</b>	Enables the user to go to the next tab.



## Overview on Devices

The **Device Selection** area displays all the detected devices, including EVS video servers, computers and tablets, which are ordered by server, tablet and computer.








Each device includes the following information.



## Field Description

GUI Element	Description
<b>Refresh button</b> 	Button that allows users to refresh the discovered devices.
<b>Server area</b> 	This field is made up of several elements, described below, from left to right: <ul style="list-style-type: none"> <li>• <b>Icon</b>: icon identifying what type of server is discovered.</li> <li>• <b>SQA-2</b>: facility name of the discovered server.</li> <li>• <b>10.159.40.50</b>: IP address of the discovered server.</li> </ul>




GUI Element	Description
<b>Tablet area</b> 	This field is made up of several elements, described below, from up to down: <ul style="list-style-type: none"> <li>• <b>Icon</b>: icon identifying it is a tablet.</li> <li>• <b>LocalHost</b>: facility name of the discovered tablet.</li> <li>• <b>10.159.40.113</b>: IP address of the discovered tablet.</li> </ul>
<b>Computer field</b> 	This field is made up of several elements, described below, from up to down: <ul style="list-style-type: none"> <li>• <b>Icon</b>: icon identifying it is a computer.</li> <li>• <b>SQATest01</b>: name of the discovered computer.</li> <li>• <b>10.159.41.54</b>: IP address of the discovered computer.</li> <li>• : icon of the MCR application installed on the discovered computer.</li> <li>• : icon of the XFile3 application installed on the discovered computer.</li> <li>• : icon of the unidentified product on the computer.</li> </ul>
<b>Manually Add area</b> 	Area that enables the user to manually add online devices by typing a valid IP address.
<b>Add Offline Device area</b> 	Area that enables the user to manually add offline devices.

## Possible Actions on Devices Selection Tab

You can manage the Devices Selection tab via the following actions:

### How to Refresh Devices

Click  to update the current discovered devices.

### How to Select Devices

Three possibilities are offered to select devices:

- Click the check box or device area to select the device, or click other check boxes or device areas to add the devices to the selection.
- [Manually add online devices](#)
- [Manually add offline devices](#)

## How to Manually Add Online Devices

The user can manually add online devices which are not discovered by Truck Manager by means of a valid IP address.

To manually add online devices, proceed as follows:

1. Type the valid IP address of the device to be added.

Enter IP Address...

2. Click .
3. The device is displayed in **Devices Selection** area and selected automatically.

## How to Manually Add Offline Devices

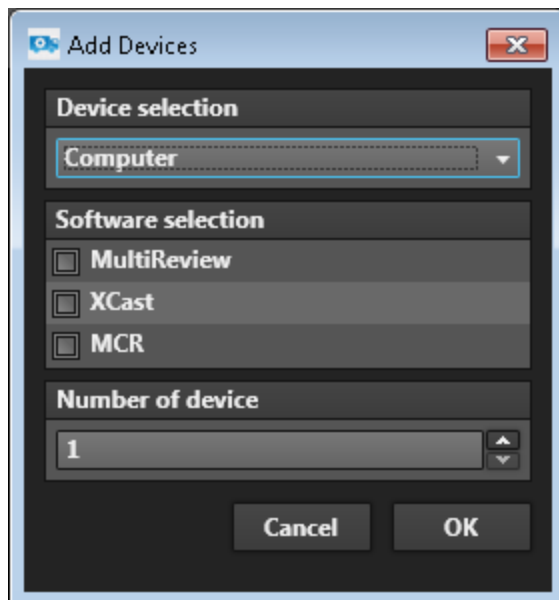
You can manually add offline devices which are not yet connected to the network.

To manually add offline devices, proceed as follows:

1. Click .

The Add Devices window opens.

2. Do the following operations in the Add Devices window.
  - a. Select a device type in the Device Selection area.
  - b. Select the product in the Software Selection area.
  - c. Define how many devices to be added.



### Note

Truck Manager can manage up to 16 devices in the same time.

3. Click .

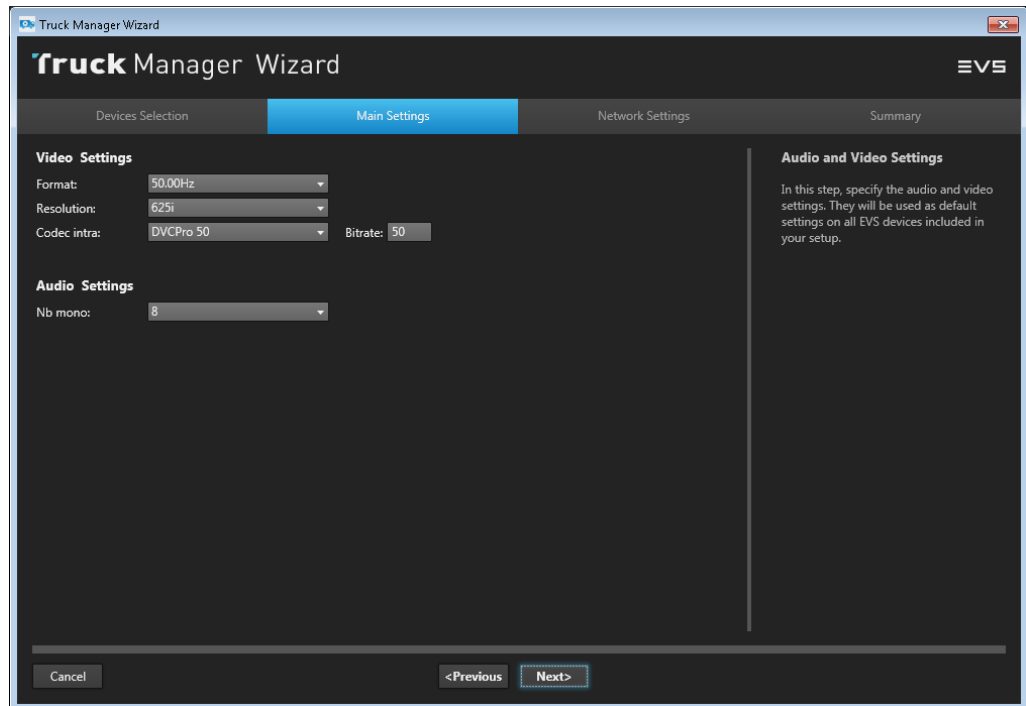


The added devices are displayed in Devices Selection area and selected automatically.

## 4.3. Main Settings

Main Settings tab allows users to define the main video and audio settings which are only applicable to EVS video servers by default.

The screenshot below shows the Main Settings tab.



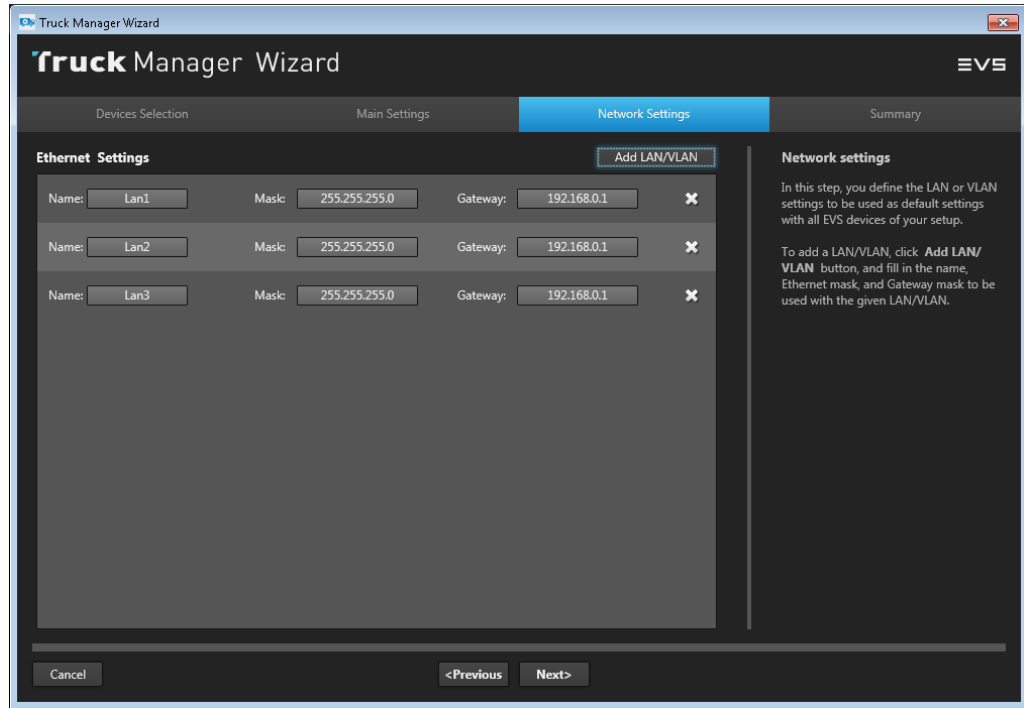


## 4.4. Network Settings


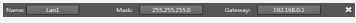

### Network Settings Tab Description

The Network Settings tab allows users to define the LAN and VLAN settings for the default settings in all EVS devices of the setup. The Ethernet settings can be selected in the **Network** field in the infrastructure settings of the main application.




The screenshot below shows the various areas of the Network Settings tab.



### Network Settings Area Description

GUI Element	Description
<b>Add LAN/VLAN button</b> 	Button that allows the user to add a LAN/VLAN.
<b>LAN/VLAN area</b> 	This area is made up of several elements, described below, from left to right: <ul style="list-style-type: none"> <li>• <b>Name:</b> name of the added LAN/VLAN.</li> <li>• <b>Mask:</b> mask of the added LAN/VLAN.</li> <li>• <b>Gateway:</b> gateway of the added LAN/VLAN.</li> <li>• : allows the user to remove the single LAN/VLAN.</li> </ul>

## Possible Actions on Network Settings Tab

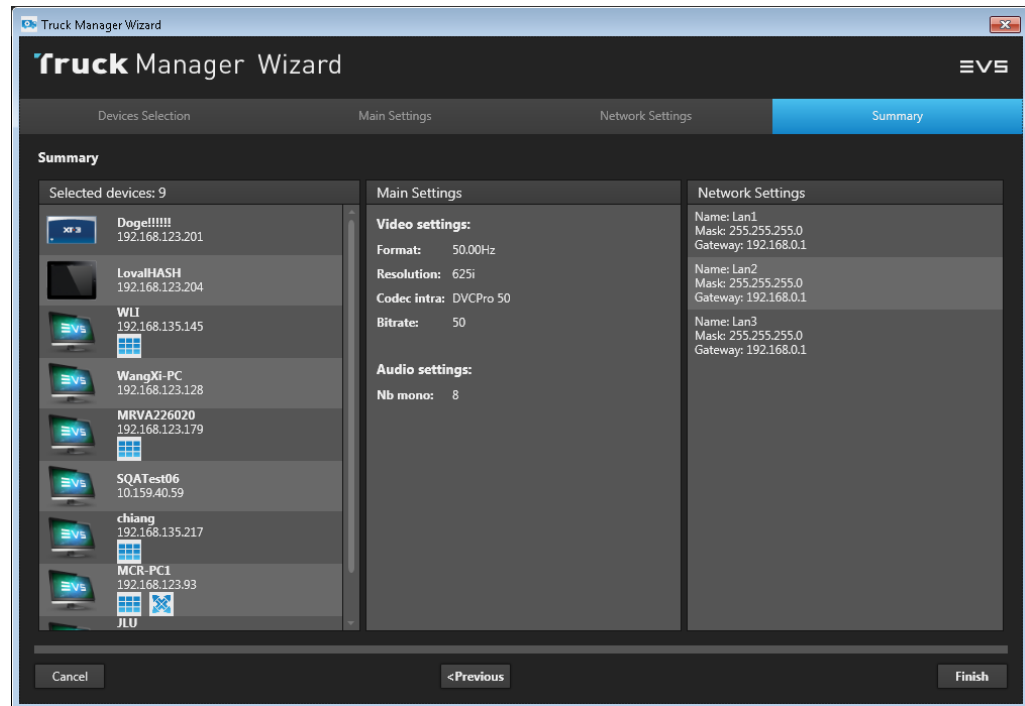
Function	Operation
Add a LAN/VLAN	Click  . To add a LAN/VLAN, click  and fill in the Name, Mask, Gateway to be used in the given LAN/VLAN.
Delete a LAN/VLAN	Click  .

## 4.5. Summary

### Summary Tab Description

The Summary tab allows users to preview all the settings you have previously defined in the Wizard pane.

The screenshot below shows the various areas of the Summary tab.



The Summary tab provides a summary of all elements of the setup you have defined in the Wizard pane:

- Devices Selection
- Main Settings
- Network Settings

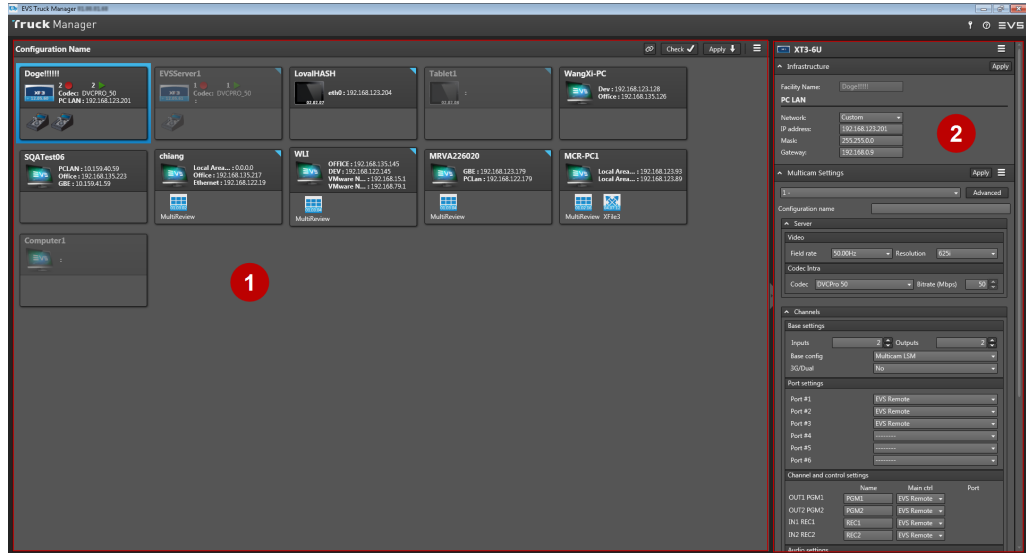
You can perform one of the following actions:

- Click **Finish** to enter the Main Application window directly with the settings and devices defined in the Wizard.
- Click **<Previous** to go back to the previous tab.
- Click **Cancel** to close the current settings and go back to the Welcome window.

# 5. Main Application Window

## 5.1. User Interface

The Main Application window aims at modifying the configuration of the devices included in your setup.



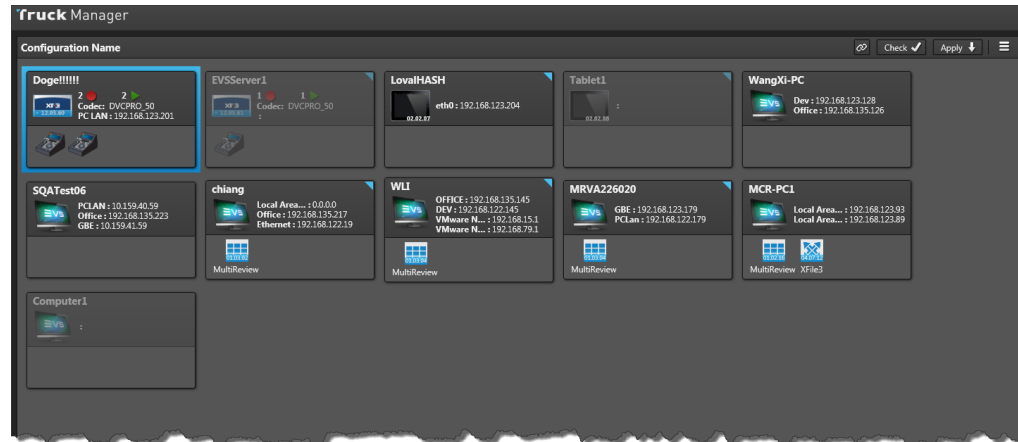
The window is divided into two fields.

Area	Name	Description
1	<b>Device area</b>	Area that displays all the devices which compose the setup.
2	<b>Configuration area</b>	Area that displays all the configurable information of the device selected in <b>Device area</b> .

## 5.2. Device Area

### 5.2.1. Overview

The **Device** area displays all devices selected in Devices Selection tab in the Wizard pane.

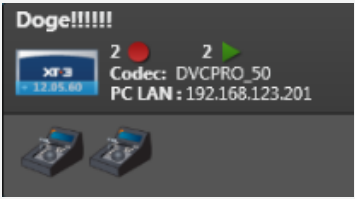


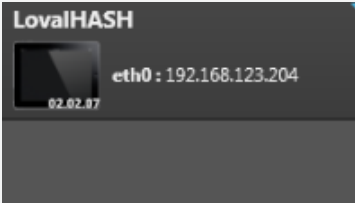
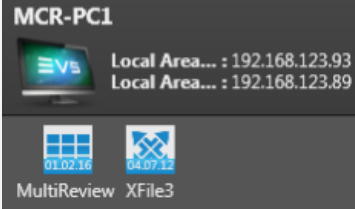




### Types of Devices

The online devices are devices which are already detected and identified by Truck Manager. The user can directly configure the settings of these devices.

The online device changes to offline device if the online device loses connection and the device box is dimmed. Each type of online device contains different information.

The offline devices are devices which are not available yet (not connected, not running, etc.). The user can start the configuration without these devices. The offline devices will be associated to discovered devices once they are detected.

Type	Description
<p><b>Server</b></p> 	<p>The device box is made up of several elements, described below, from top to bottom:</p> <ul style="list-style-type: none"> <li>• <b>Server name:</b> the facility name of the server.</li> <li>• <b>Icon:</b> icon identifying what type of server is discovered and its version</li> <li>• : number of recorders</li> <li>• : number of players</li> <li>• : Super Slow Motion function is available in the server.</li> <li>• <b>Codec</b></li> <li>• <b>PC LAN</b></li> </ul>
<p><b>Tablet</b></p> 	<p>The device box is made up of several elements, described below, from top to bottom:</p> <ul style="list-style-type: none"> <li>• <b>Tablet name:</b> the facility name of the tablet.</li> <li>• <b>Icon:</b> icon identifying it is a tablet and its version</li> <li>• <b>PC LAN</b></li> </ul>
<p><b>Computer</b></p> 	<p>The device box is made up of several elements, described below, from top to bottom:</p> <ul style="list-style-type: none"> <li>• <b>Computer name:</b> the facility name of the computer.</li> <li>• <b>Icon:</b> icon identifying it is a computer.</li> <li>• <b>IP address of the Ethernet card</b> (the number of Ethernet card depends on the current computer).</li> <li>• : icon of the MCR application installed on the discovered computer and its version.</li> <li>• : icon of the XFile3 application installed on the discovered computer and its version.</li> </ul>

## 5.2.2. Global Operations

### Introduction

Global operations can be operated on all devices in Device area.

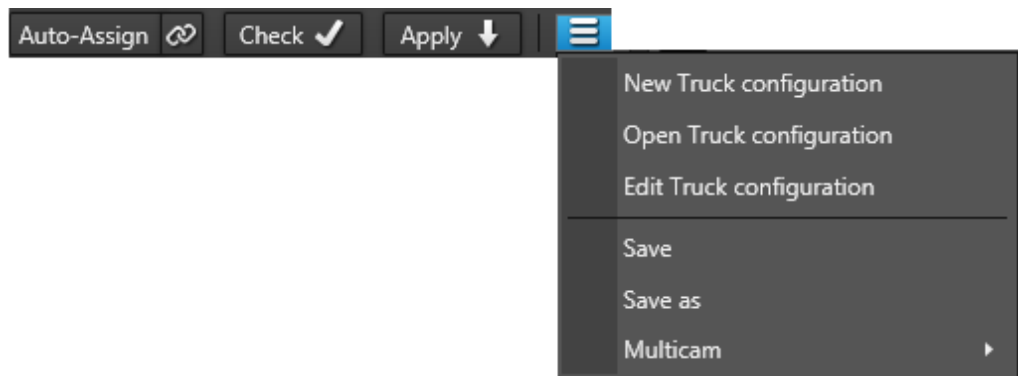
The following operations are available for the user in the main menu:

- Auto-Assign
- Associate
- Check
- Apply
- Changing Configuration Name



Click  at the upper right side of **Device** area to display all the available operations.

Several operations are available.



#### Note

Commands specific to the product available in the product menu item are described in the plugin section of the product manual.

### Possible Actions on Global Operations

You can manage the configurations of all devices via the following actions:

#### How to Create a New Truck Configuration

Creating a new truck configuration consists in composing a new configuration in the Wizard and applying the new configuration to Truck Manager.

To create a new truck configuration, proceed as follows:

1. Click on **New Truck configuration**.
2. Set up all the configurations in the Wizard.

Refer to "Starting a New Production" on page 14.

3. Click **Finish** in the wizard.

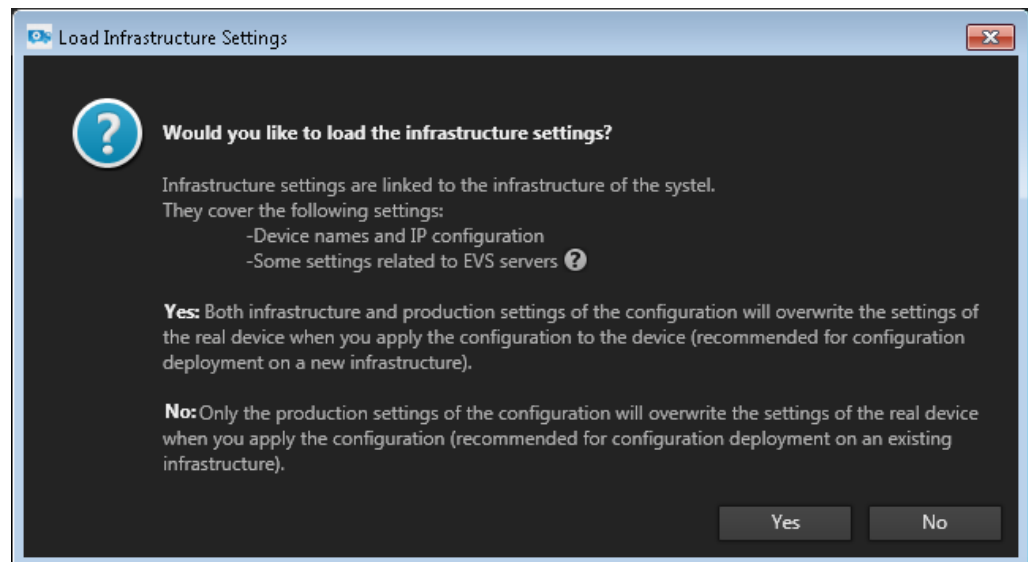
The new configuration is applied to the Truck Manager application.

## How to Open a Truck Configuration

Opening a truck configuration consists in opening the existing configuration file and applying to Truck Manager.

To open a truck configuration file, proceed as follows:

1. Click on **Open Truck configuration**.
2. Select the Truck configuration file and click **Open** in the Open File window.
3. Select either option:
  - Click **Yes**: the infrastructure settings are loaded to Truck Manager.
  - Click **No**: the infrastructure settings are discarded, and no infrastructure settings remain in Truck Manager.



After opening the Truck Configuration, all the devices in the configuration are offline. To associate the device, refer to "Associating Offline Devices to Online Devices" on page 42.



### Note

The procedure of "How to Open a New Truck Configuration" is the same as "Opening a Production" on page 15.

## How to Edit the Truck Configuration


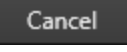
Editing truck configuration consists in editing the current applied configuration in Truck Manager.

This menu opens a pop-up window with a simplified version of the wizard which does not include the Summary tab.

To edit the truck configuration, proceed as follows:





1. Click on **Edit Truck configuration**.
2. Set up the configurations in the Wizard.  
You can only switch the tabs by clicking each tab in the Wizard.
3. Click  when you are satisfied with the current configuration.  
The modifications include the infrastructure settings and the new selected devices will be updated on all the devices.  
If the user clicks , no modification will be done on the setup.

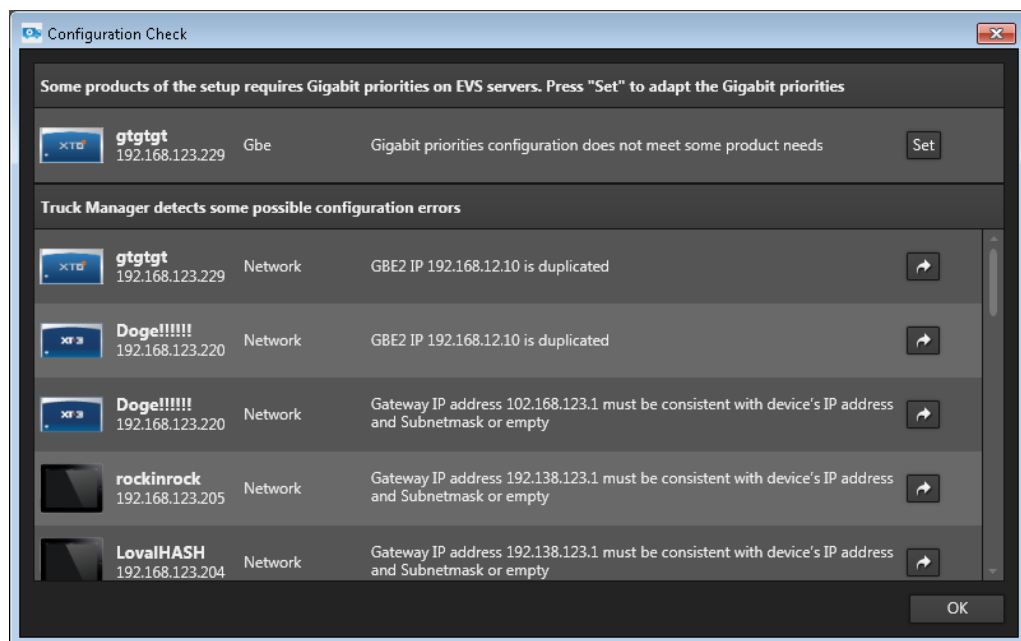


**Note**  
The procedure of "How to Edit the Truck Configuration" is similar with the procedure in the setup of Wizard pane. Referring to "Wizard Pane" on page 20.

### How to Check Truck Configuration

The user can easily review all the detected errors and conflicts displayed in the Configuration Check window and navigate to the device by the Configuration Check function.


Click  to open the Configuration Check window.



All the errors and conflicts consist in the Configuration Check window, including the errors of the configuration conflicts and the predefined product rules and the requested Gigabit priority.

Two functions are possible in the Configuration Check window:

- Checking error device.

Click  to go to the device whose configuration is incorrect.

When an exception is solved, the corresponding message will disappear from the Configuration Check window.

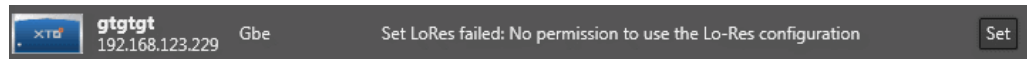
- Adapting Gigabit priority.

Click **Set**, and the Gigabit priority of the selected server will be set.

- If successful, the error message becomes "Gbe priorities were set successfully" and **Set** disappears.



- If failed, the error message and **Set** maintain on the device.



### How to Save a Truck Configuration File

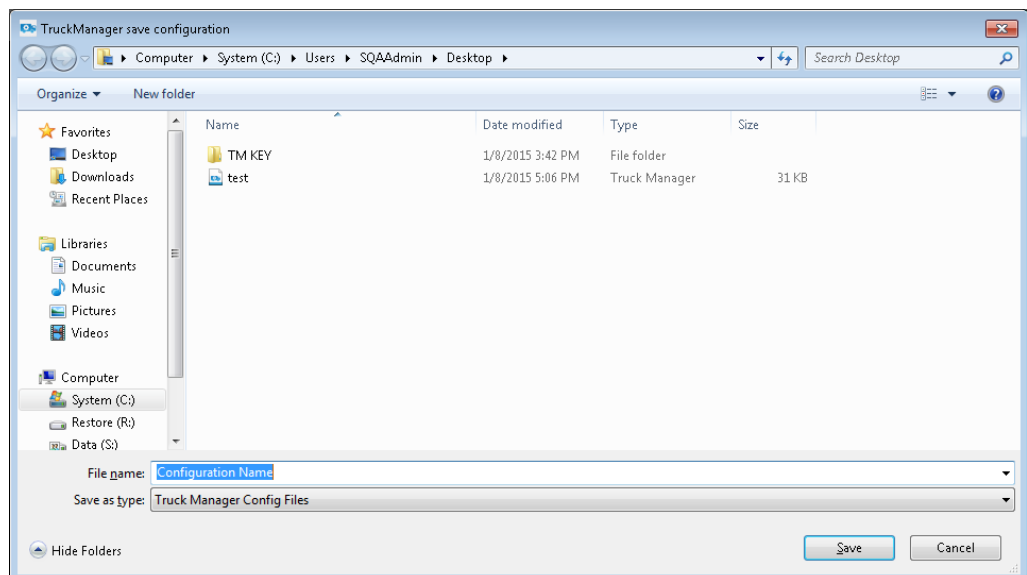
The Save function aims at saving all configurations of all the selected devices as one file. Two situations can occur depending on whether you have already saved the truck configuration locally before or not:

To save the open Truck configuration file, proceed as follows:

1. Click **Save** from the contextual menu.
2. Do one of the following:
  - If the Truck configuration file exists locally, an Information window pops up to inform the user that the truck configuration file has been saved:  
Click **OK** to close the window.
  - If the Truck configuration file does not exist locally, a Truck Manager save configuration window opens where you can select a specific destination:

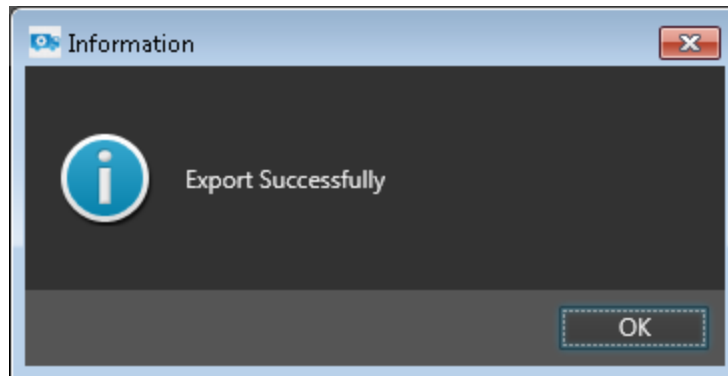
Go to the step 3

3. Select the folder where you want to save the configuration file, and type a name for your configuration file.



4. Click **Save**.

An Information window pops up to inform the user that saving the Truck configuration file is successful.



5. Click **OK** to close the window.

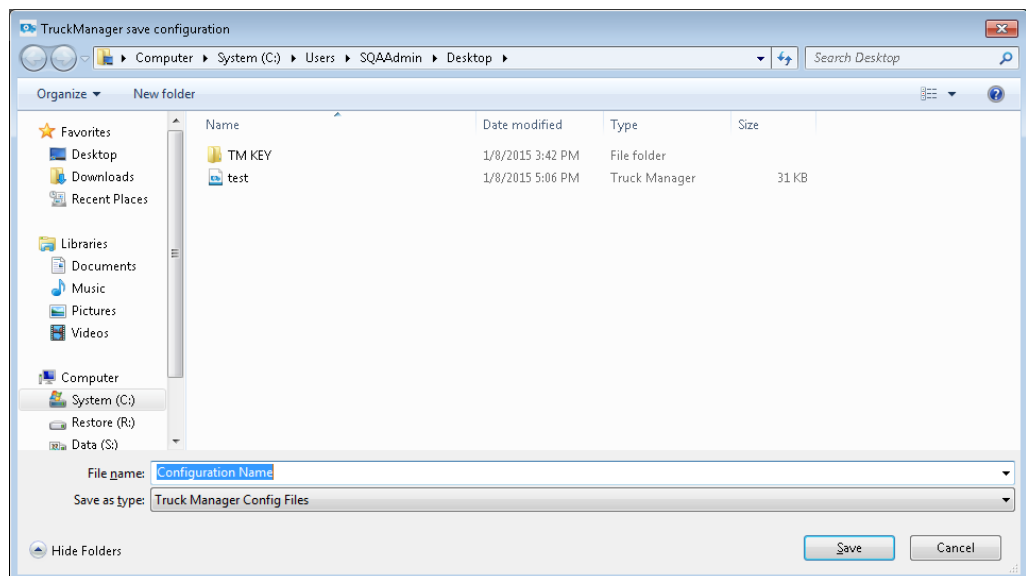
### How to Save As a Truck Configuration File

Saving a Truck configuration file function aims at saving all configurations of all selected devices as one file to the requested path with the defined configuration name.

To save as a Truck configuration file, proceed as follows:

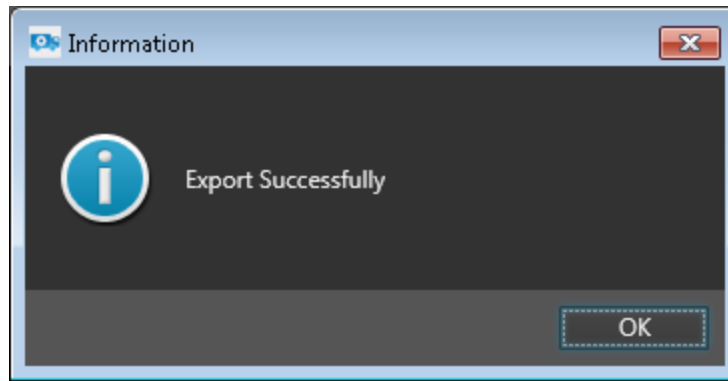
1. Click **Save As** from the contextual menu.
2. Select the folder where you want to save the configuration file, and type a name for your configuration file.

Click **Save**.



3. Click **Save**.

An Information window pops up to inform the user that saving the Truck configuration file is successful.



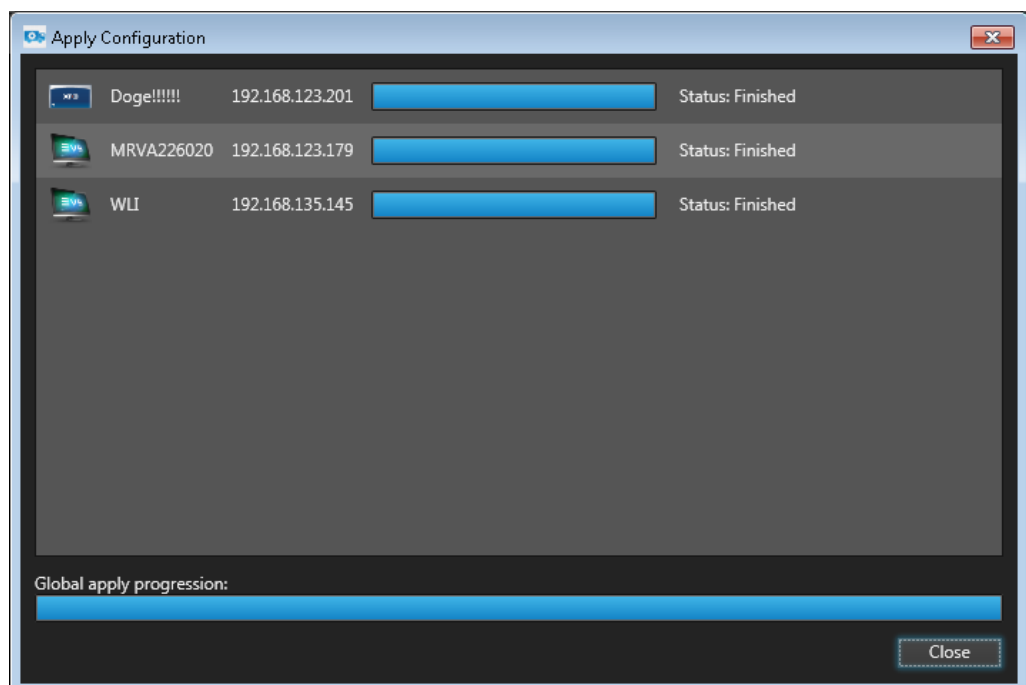
4. Click **OK** to close the window.

## How to Apply All Configurations

The Apply All aims at applying all modifications at one time to all the devices to be configured.

To apply all configuration changes, proceed as follows:

1. Click **Apply** ↓.  
An Apply Configuration window pops up, which lists out the devices to be configured.
2. Do one of the following actions:
  - Click **Run** to proceed applying.
  - Click **X** or **Close** to exit Apply Configuration window.



## How to Change Configuration Name

The user is allowed to change the name of the current configuration. The configuration name will be used as the default name of the save configuration file.

To change configuration name, proceed as follows:


1. Double click **Configuration Name** ;
2. Type the requested name in this field;
3. Press ENTER on the keyboard or click other field on Truck Manager to validate the modification.

## How to Disable Apply Function

Truck Manager allows the user to disable all Apply functions in the configuration file of Truck Manager. After disabled, all Apply buttons will be dimmed.

To disable the Apply function in Truck Manager, proceed as follows:

1. Open `TruckManager.exe.config` in Truck Manager installation path:  
C:\Program Files (x86)\Evs Broadcast Equipment\Truck Manager

 TruckManager.exe.config

2. Change the value of "EnableApplybutton" into **false**.

The default value is **true**.

- **True:** Enable Apply function
- **False:** Disable Apply function

```
<!-- disable apply button to support trade show, default is true(don't disable button) -->  
<add key="EnableApplybutton" value="true" />
```

3. Restart Truck Manager.

The Apply button is dimmed and the Apply function is disabled.

## 5.2.3. Individual Operations

### Introduction

The operations described below are applied to a single device at a time.

### Possible Actions on Individual Operations

You can manage the configurations of the single device via the following actions:

### How to Copy and Paste Server Configurations

Truck Manager allows the user to copy the server configuration and paste it to other servers, including the following setting types:

- Server
- Channels
- Network
- Monitoring
- Protocol
- Gpi
- Operation



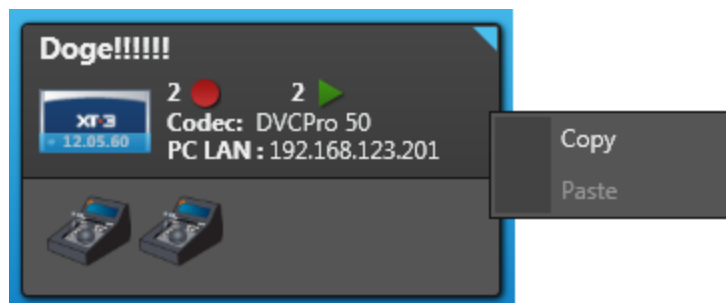
#### Note

Truck Manager will adopt the latest Plugin Feature version in case of conflicts between copied device and pasted device.

---

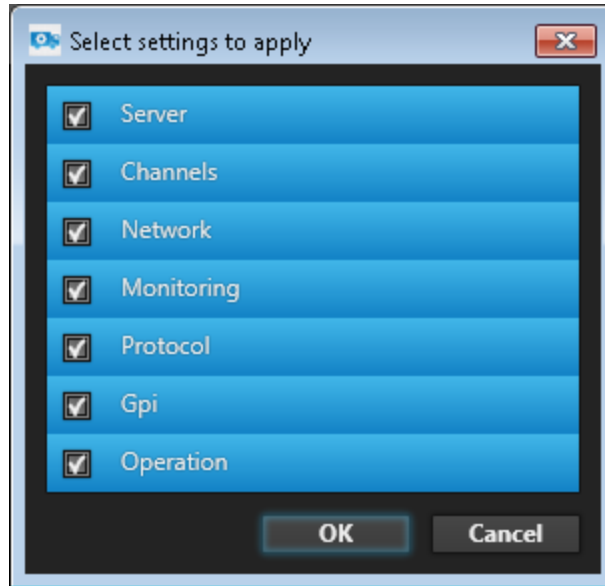
To copy and paste the server configurations, proceed as follows:

1. Right-click on a server to be copied and select **Copy**.



2. Right click on a server to be pasted and click **Paste**.
3. Select the items to be pasted by ticking the check boxes corresponding to the setting types you want to paste.

By default, all the items are selected.



4. Do one of the following actions:
  - Click **OK** to validate this operation and close the window.
  - Click **Cancel** to abort this operation and close the window.

## 5.2.4. Associating Offline Devices to Online Devices

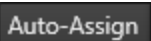
Associating offline devices to online devices is associating the dimmed offline devices to the physical devices.

The product version in the physical device will be applied into the associated device.

Except for the product version, all configurations in the offline device will be applied into the associated device.

You can associate the offline devices in three different ways.

### How to Auto-Assign Devices

The Auto-Assign device function will associate all offline devices automatically at one time by clicking the . After that, all the offline devices are associated to the corresponding discovered devices based on the last saved Series Number.

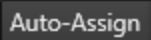
The function is available when the user performs the following operations:

- Opening a Production in "Starting Up Truck Manager"
- Recent Production in "Starting Up Truck Manager"
- Open Truck configuration in Global Operations.

After opening a new production by a configuration file, all the devices in Truck Manager are in offline mode.





#### Note

If the user adds some new offline devices after opening an existing configuration by a configuration file and then click , only the devices in the configuration file will be associated recognized by its serial number.

### How to Associate Devices from the Associating Window

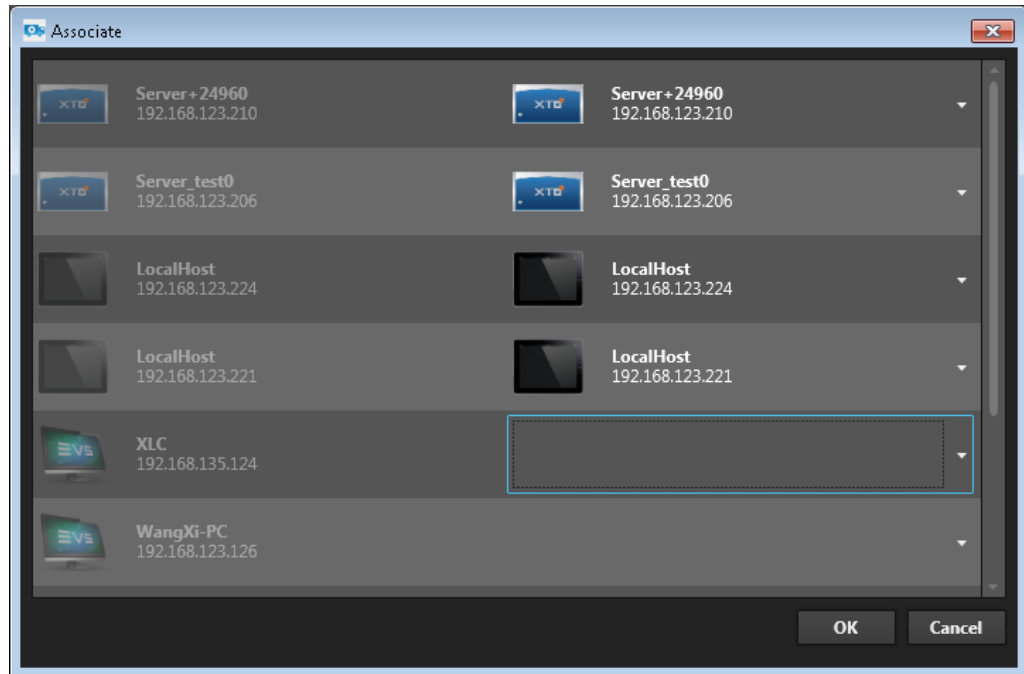
In the same cases, Associating Devices from the Associating Window is associating the single device one by one in the same window.

 will appear exclusively if there are offline devices in Truck Manager. If there are no more offline devices, the  button will disappear.



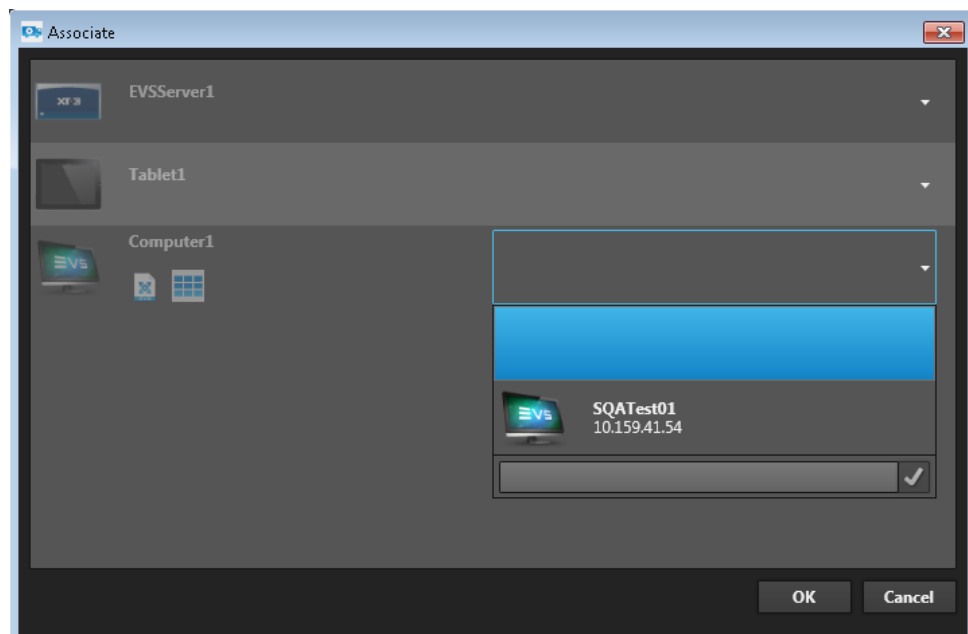
To associate devices from the Associating Window, proceed as follows:

1. Click . An Associate window pops up.



2. Click the drop-down arrow and select a device to be associated.
  - If the device to be associated is not in the drop-down list, type the IP of the device in the blank area and click .
  - If the user selects a device which is already associated to an offline device, the new association of the device will replace the previous one and the previous associated offline device will be associated to an empty item.

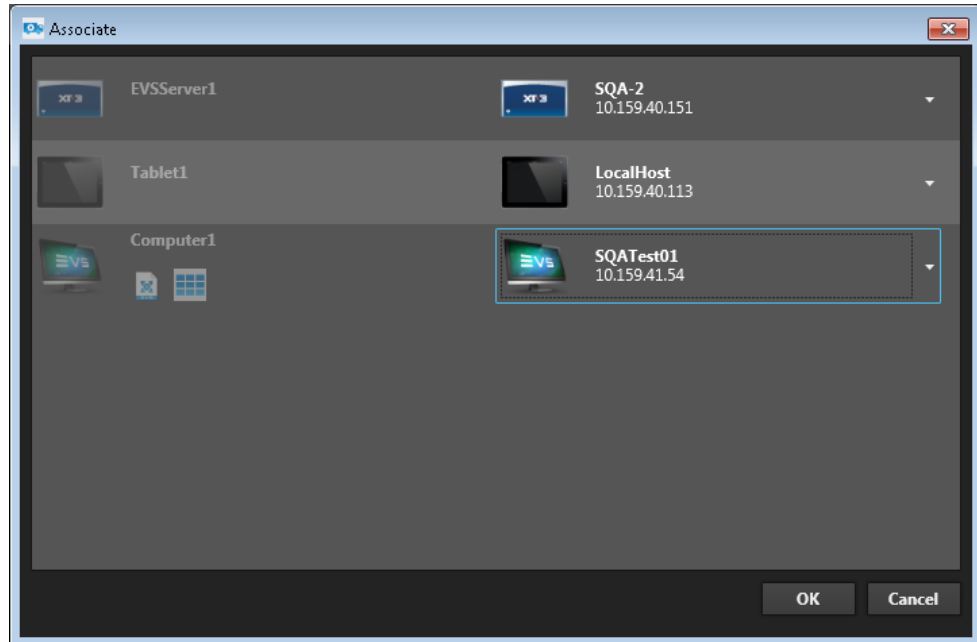
At this step the association is not effective and the user can still update the association.



When all associations have been made, press **OK** to effectively apply the associations.

3. The associated device is no longer dimmed: it is active now.

Click **OK** to close the window.



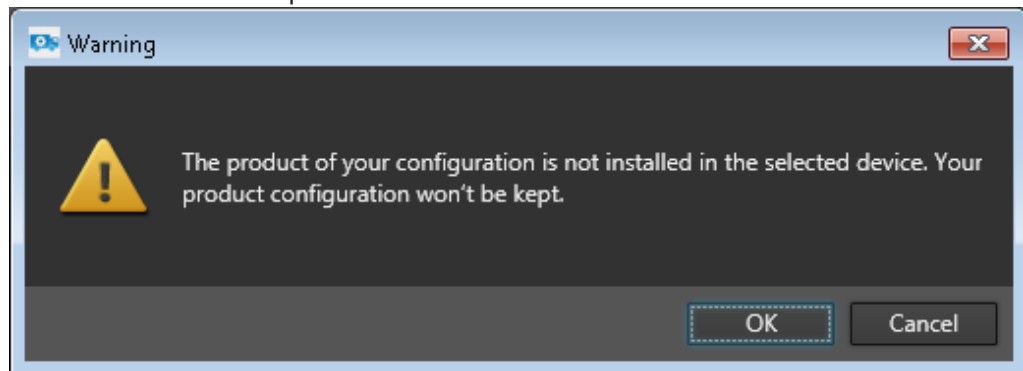
### Warning

When associating devices, if the product of the configuration is not installed in the selected device, the product configuration won't be kept.

For example:

- Offline device: XFile3, MultiReview
- Online device to be associated: XFile3

MultiReview won't be kept in the associated device.



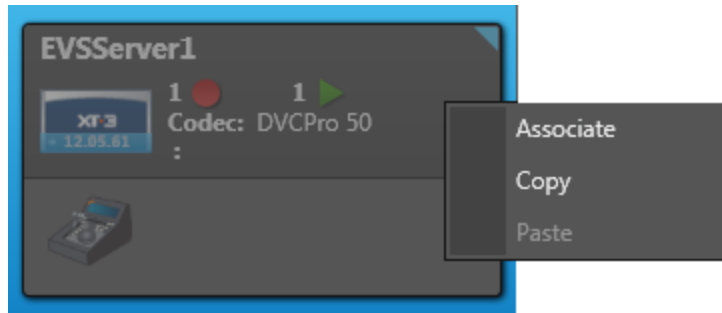
## How to Associate a Device Individually

All offline devices are dimmed.

The user is able to associate the offline devices with the physical devices via the **Associate** button.

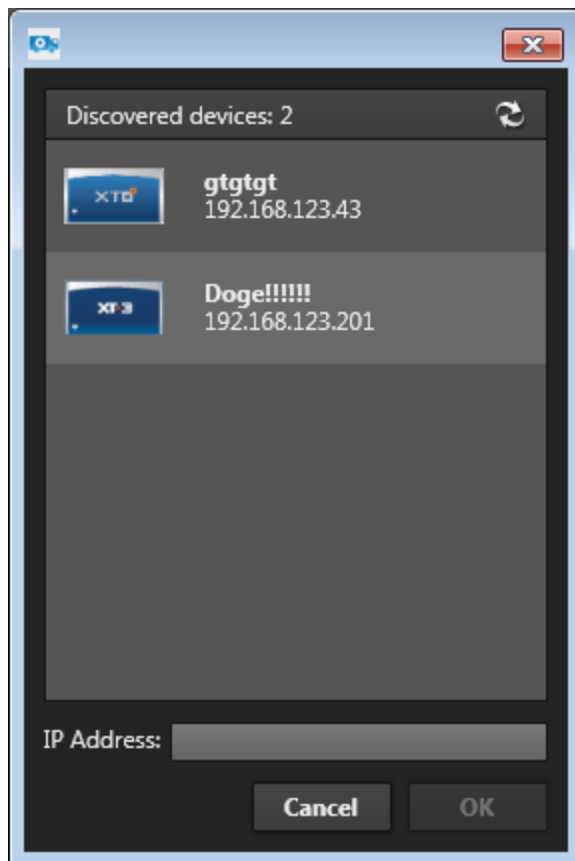
To associate a discovered device, proceed as follows:

1. Right-click on an offline device.



2. Click **Associate** from the contextual menu.

3. Select a device to be connected and click **OK**.



The associated device is no longer dimmed: it is active.

The user can type the valid IP address of the online device if it is not discovered.

**Note**

Only the online devices which haven't been selected display in Associate Device window.

---

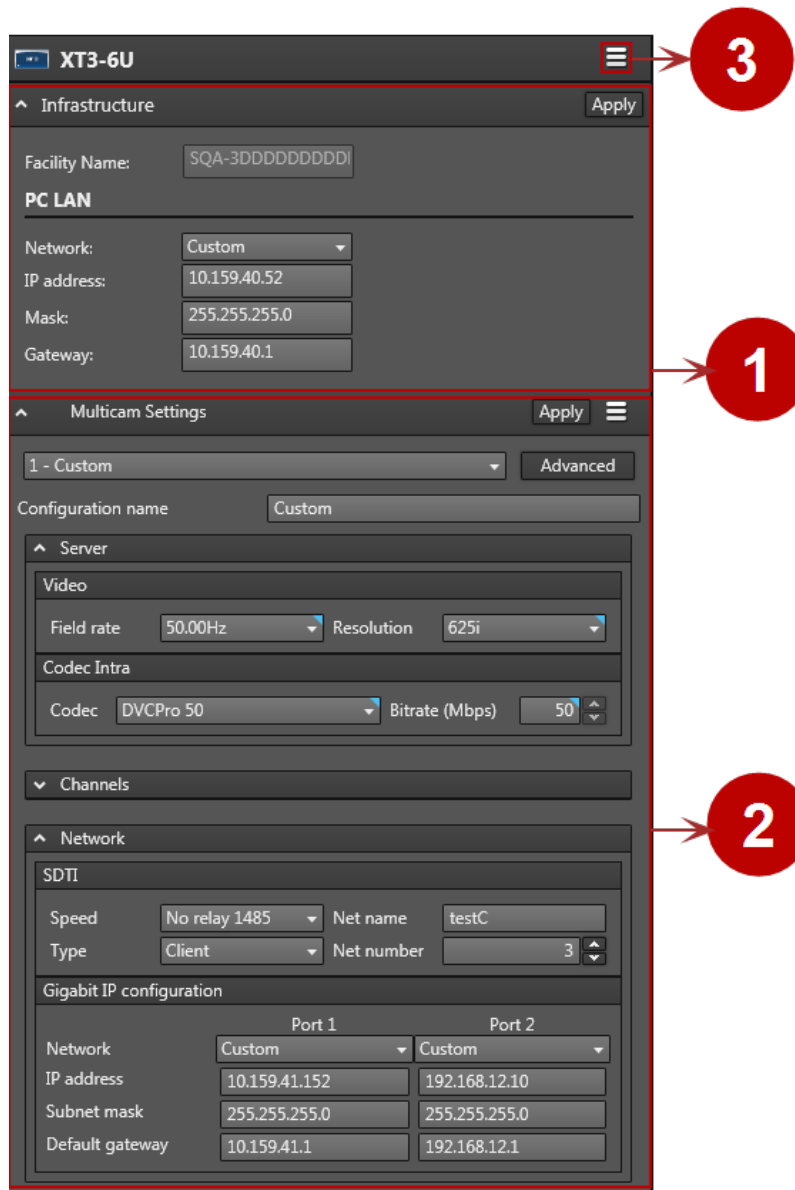
## 5.3. Configuration Area

### 5.3.1. Overview

The Configuration area displays the configuration of the device selected in Device area including the infrastructure configuration and product configuration as well as the main device menu.

Click on one device in **Device** area to display its configuration in the **Configuration** area.

The following screenshot below shows the various configuration areas of a device (taking a server configuration as an example) in **Configuration** area.



---

<b>Area</b>	<b>Name</b>	<b>Description</b>
<b>1</b>	<b>Infrastructure Configuration</b>	Area that displays the infrastructure configuration defined in Wizard pane.
<b>2</b>	<b>Product Configuration</b>	Area that displays the configuration of product installed in the selected device on Device area.
<b>3</b>	<b>Main Device Menu</b>	Area that displays the type of device and all the operations which are applicable to both infrastructure and product.

## 5.3.2. Infrastructure Configuration

Infrastructure Configuration area displays all the configurations defined in the Wizard.

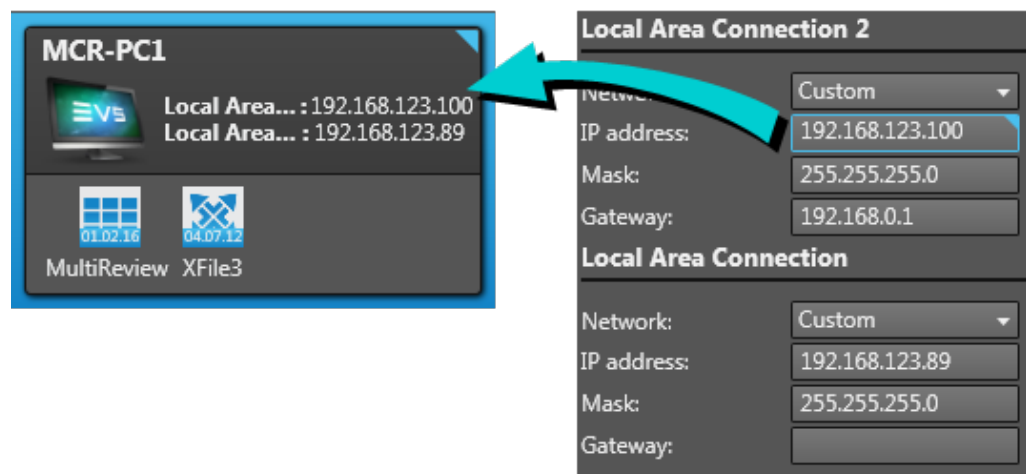
### Possible Actions on Infrastructure Configuration

You can manage the infrastructure configuration via the following actions.

#### How to Configure a Device

To configure a device, type the corresponding values in the field to be configured.

The values will be displayed on the device in **Device** area simultaneously.



#### Note

The configurations of offline devices can only be exported instead of being applying.

#### How to Apply Infrastructure Configuration

The Apply function will only apply the settings defined in the Infrastructure Configuration area.


Please refer to [How to Apply Device Configuration Changes](#) for the detailed procedure.

## 5.3.3. Product Configuration

Product Configuration area displays the configuration coming from Products.

For the detailed configuration of each product, please refer to the corresponding user manual of the product.

### Possible Actions on Product Configuration

You can manage the product configurations by clicking  in the upper right side of Product Configuration area.

### How to Apply Product Configuration

The Apply function will only apply the settings defined in the Product Configuration area.

Please refer to [How to Apply Device Configuration Changes](#) for more details.

### How to Reset Product Configuration

The Reset function only takes effect on Product Configuration area.

Please refer to [How to Reset Device Configuration](#) for more details.

### How to Export Product Configuration

To export a single product configuration as a file, proceed as follows:

1. Click on **Export** from the contextual menu.
2. Select the requested destination in the local computer.
3. Type a new configuration name if needed. Truck Manager uses the product name as default.
4. Click **Save**.

### How to Import Product Configuration

The configuration of a single Product can be imported.

To import a Product configuration, proceed as follows:

1. Click on **Import** from the contextual menu.
2. Select the configuration file.
3. Click **Open** to import all the configurations of the product .

### How to Copy and Paste Product Configurations

The Copy and Paste function only takes effect on Product Configuration area.

Please refer to [How to Copy and Paste Server Configurations](#) for more details.




### 5.3.4. Main Device Menu


Main Device Menu area displays all the operations which are applicable to both infrastructure and Product .

The operations of EVS video server and computer are different.

Device Type	Operation	Functionality
All Devices	Apply	To apply the current configuration to the device selected in Device field.
	Reset	To restore the original parameters in the device selected in Device field.
Computer	Remote Desktop	To build remote desktop function to the computer selected in Device field. Only online computer is available for remote desktop connection.

#### Possible Actions on Main Device Menu

You can manage the EVS video sever configurations by clicking  in the upper right side of **Configuration** field.

The user is able to manage both infrastructure and Product configurations by clicking  on Main Device Menu area.

#### How to Apply Device Configuration Changes

Applying device configuration changes can apply the updated configurations in Infrastructure Configuration area and Product Configuration area.

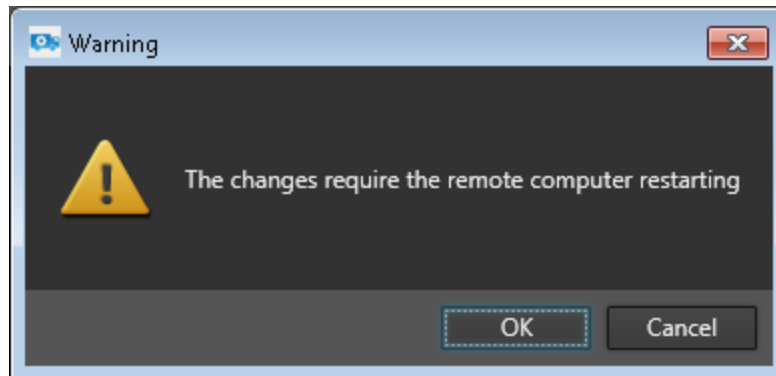
To apply device configuration changes, proceed as follows:

1. Click **Apply** from the contextual menu.

The applied configuration will be updated on the device on **Device** area.



2. If a message box pops up to require restarting the remote device.
  - Click **OK** to restart and apply the changes
  - Click **Cancel** to abort the changes.



## How to Reset Device Configuration

The Reset server configuration function allows users to restore the original parameters in the Infrastructure Configuration area and Product Configuration area.

To reset device configuration, click Reset from the contextual menu, and all the configurations of the device will be restored to the original parameters.




## How to Copy and Paste Server Configurations

Please refer to [How to Copy and Paste Server Configurations](#) for more details.

## How to Build Remote Desktop Connection to the Selected Computer

Remote Desktop function allows the user to build remote connection to the selected computer. Only online computer is available for remote desktop.

To build remote desktop connection, proceed as follows:

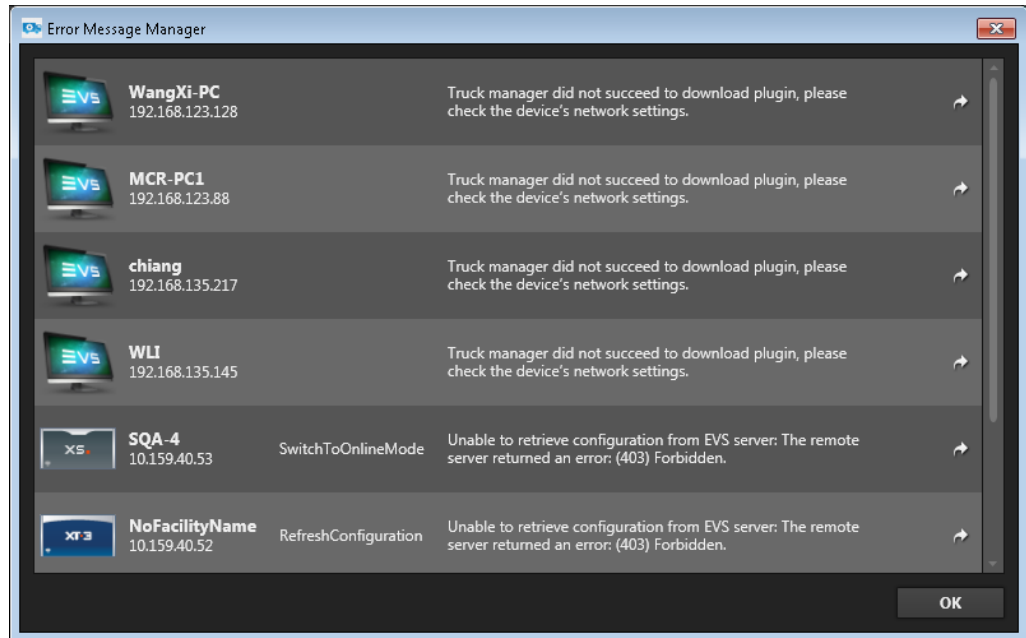
1. Select an online computer to be connected.
2. Click 
3. Type the valid credentials and click **OK**.

The remote desktop connection is built.

## 5.4. Additional Functions

### 5.4.1. Error Message Manager


In some cases, some error messages will be displayed in the Error Message Manager window because some changes do not support the configuration of the device.



The Error Message Manager window gathers the errors by the devices.


The error messages may be displayed after processing the following actions by Truck Manager:

- Entering Truck Manager after the Wizard
- Editing Truck configuration
- After assigning several offline devices to the online devices

To solve this error, click  to go to the exact device who has the error message.

When an error is solved, the corresponding message disappears from the window.

## 5.4.2. About Window

To review the product information of the current Truck Manager version, click , which opens the **About** window.

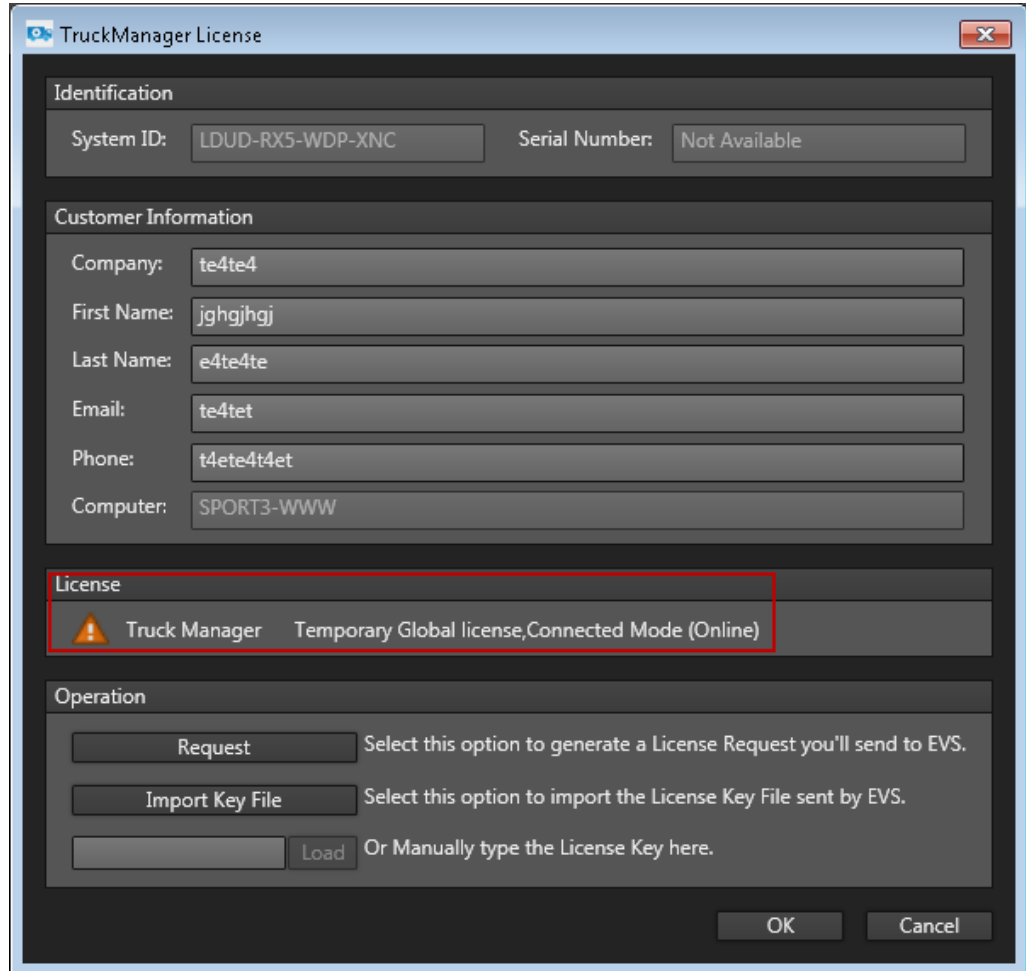


Click on [User Manual](#) which links to open the PDF file of the current Truck Manager version.


### 5.4.3. Updating License Key

To review the current customer and license information or update the current license key,

click  in the upper right corner of the Main Application window in Truck Manager.




The screenshot shows the 'TruckManager License' dialog box with the following content:

- Identification:** System ID: LDUD-RX5-WDP-XNC, Serial Number: Not Available
- Customer Information:** Company: te4te4, First Name: jghgjhgj, Last Name: e4te4te, Email: te4tet, Phone: t4ete4t4et, Computer: SPORT3-WWW
- License:**  Truck Manager Temporary Global license, Connected Mode (Online)
- Operation:**
  - Request:** Select this option to generate a License Request you'll send to EVS.
  - Import Key File:** Select this option to import the License Key File sent by EVS.
  - Load:** Or Manually type the License Key here.

Buttons for 'OK' and 'Cancel' are located at the bottom right.

To update the license key, proceed as follows:

1. Click the **Licensing** button  in the upper right corner of the Main Application window in Truck Manager.

The Truck Manager License window pops up.

2. Update the license key.

Refer to [How to Import Key File](#) and [How to Load License Key Manually](#)