

# Fujitsu SCSI Scanner Installation Procedures

## Windows NT 4.0

If you are installing the following models by means of the SCSI interface then use this document.

SP10C	M3093GX\DG	Fi-4530C	Fi-5120C
SP15C	M3096GX	Fi-4640S	Fi-5220C
SP600C	M3097G\G+\DG	M4097D	Fi-5530C
SP620C	M3099G\GX\GH	Fi-4750C\L	Fi-5650C
SP3091DC	FI-4120C\C2	M4099D	Fi-5750C
SP3092DC	FI-4220C\C2	Fi-4860C	Fi-5900C
SP93GX	FI-4340C	Fi-4990C	

If you are going to use the USB interface of a dual SCSI/USB model then use the USB scanner installation guide. For Scansnap models please use the Scansnap installation guide.

### Hardware requirements.

You will need a PC system that meets our recommended specifications, an appropriate SCSI controller, and a SCSI cable (six foot recommended maximum). For recommended PC system specifications and SCSI controllers please reference the [Scanner Hardware Reference](#) page. You may also need your Operating System Disk.

### Step A: Installing the SCSI Host Adapter (Adaptec).

1. Shut down your PC and remove the case cover.
2. Locate a free PCI slot and remove the back plate if necessary.
3. Install the SCSI controller in an open PCI slot.  
Make sure that the card is seated completely in the slot and secured in the frame

**Warning!** Failure to secure the SCSI controller in the PC can result in damage to the SCSI card, scanner, and/or your system.

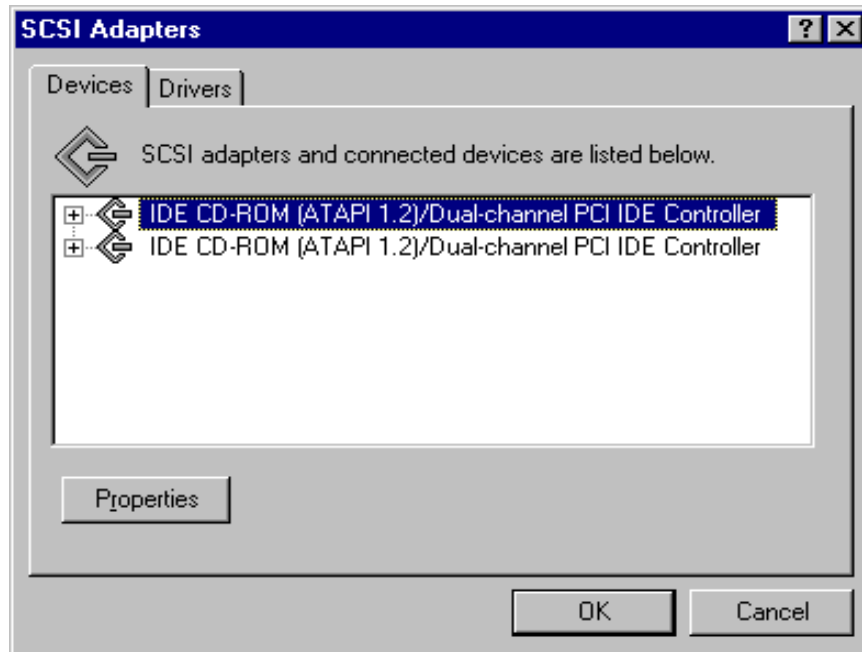
4. Boot your PC without the scanner attached.

### Step B: Installing the SCSI drivers (Adaptec).

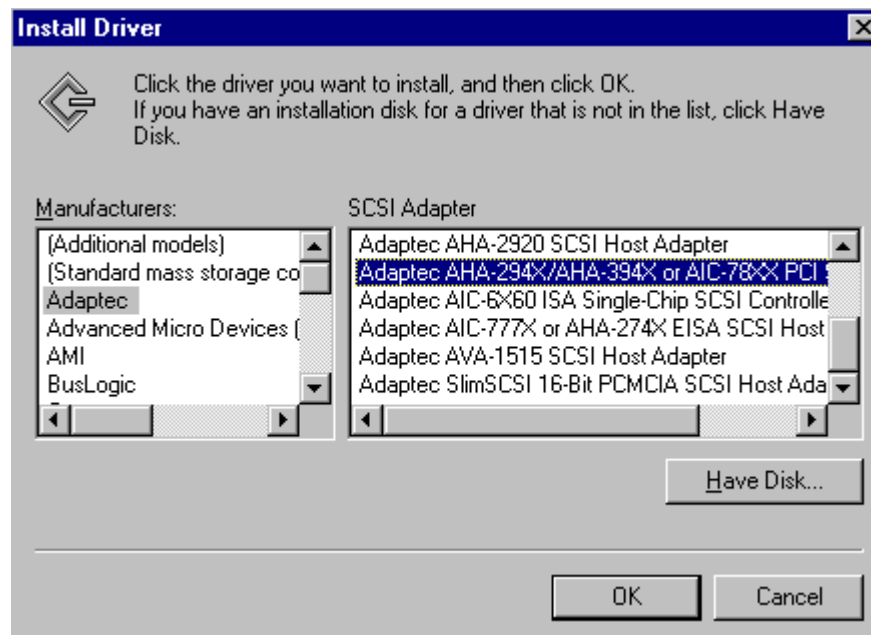
Although Windows NT has driver support for your host adapter it does not support plug and play. Therefore the SCSI drivers will need to be loaded manually. Follow the instruction below to install the driver for your host adapter.

## Fujitsu SCSI Scanner Installation Procedures Windows NT 4.0

1. Login with administrator rights.
2. Go to Start, Control Panel, SCSI Adapters.



3. Then click on the Drivers tab and click 'Add.'
4. Next select 'Adaptec' under Manufacturers
5. On the next menu scroll down again and double click on the line that reads – 'AHA294x\AHA394x or AIC78xx PCI SCSI controller.'



## Fujitsu SCSI Scanner Installation Procedures Windows NT 4.0

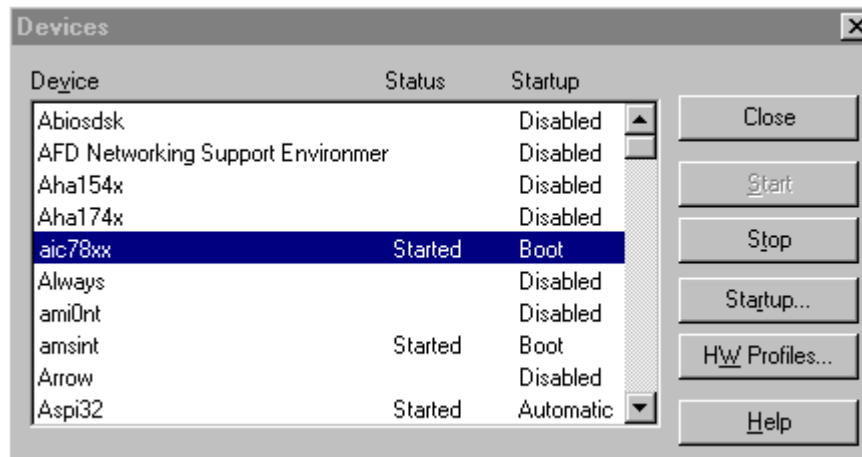
6. Insert your WinNT CD system disk and click OK.
7. When prompted to reboot, select no.
8. Then go to [www.adaptec.com](http://www.adaptec.com), and click on the "search" tab. Scroll down to the "Enter key word or quoted phrase" box and type in "aspi32.exe."
9. Next scroll down to the drivers section, click on "aspi32.exe" and follow the prompts to download it to your desktop or a new folder.
10. Afterwards go to that location and double click on the "aspi32.exe" icon.
11. Follow the prompts and then reboot.

If there are no errors then shut down your system and go to the next step.

**Special note:** If you are using a different SCSI controller than what is shown in these examples then select the "Have Disk" button, insert your driver CD into the CD Rom, and follow the prompts.

### Check the SCSI drivers

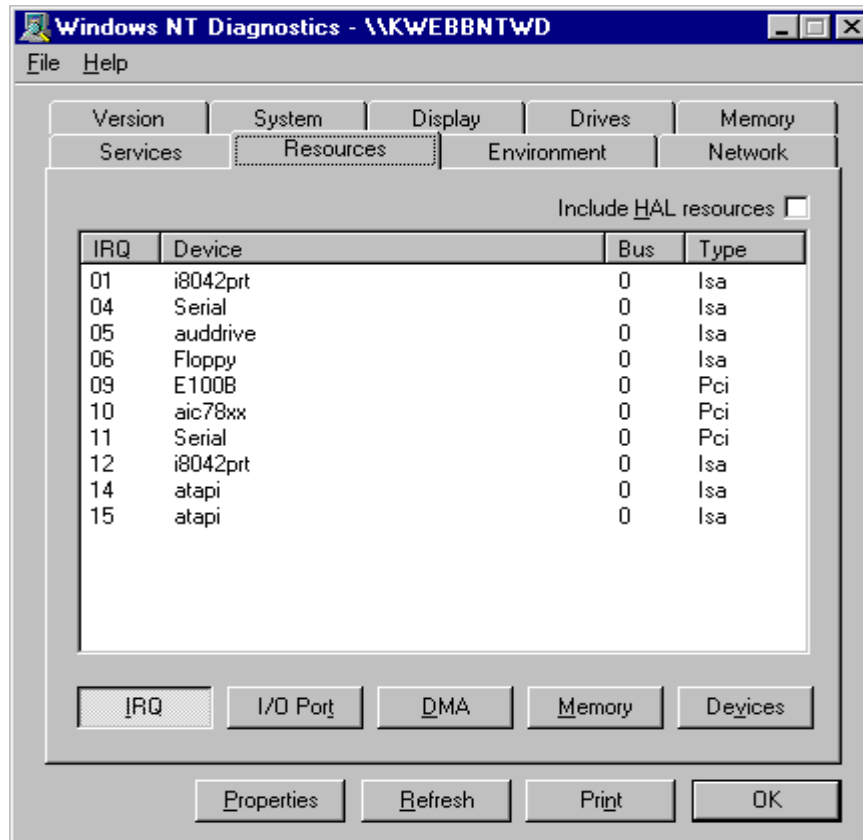
- Once the driver has been added, return to Control Panel
- Double-click on 'Devices'
- Search for 'aic78xx' under Device



Ensure the aic78xx entry under Device displays 'Started' under Status and 'Boot' under Startup as seen here. Ensure 'Aspi32' entry under Device displays 'Started' under Status and 'Automatic' under Startup as seen above.

## Fujitsu SCSI Scanner Installation Procedures Windows NT 4.0

Next go to the NT diagnostics window and check for resource conflicts. The SCSI controller listed as "aic78xx" should not be sharing its IRQ with any other devices in the system.



### Step C: Installing the drivers from the Setup CD.

To begin it is recommended that you install the drivers first before connecting the scanner.

#### Installing the ASPI-Twain driver.

The STI-Twain drivers are not supported by Windows NT, consequently, you must install the ASPI-Twain driver.

1. Insert the Scanner Setup CD into your CD Rom.
2. Next please complete the pre-registration box when it appears and click the submit button.
3. Afterwards close your browser and click the **Install Products** button on the Scanner Setup Menu.
4. On the next screen click on **Twain Driver** and you may be presented with the option to install the Error Recovery Guide.
5. After you have installed the Error Recovery Guide (or not) follow the prompts to complete the twain driver installation.
6. **Do not reboot at this time!**

## Fujitsu SCSI Scanner Installation Procedures Windows NT 4.0

### Installing the ISIS driver.

7. Next go back to the Scanner Setup Menu and click on **ISIS Driver**.
8. If you didn't install the Error Recovery Guide during the Twain driver installation you will be asked again. Proceed and follow the prompts to complete the ISIS driver installation.
9. **Do not reboot at this time!**

### Installing ScandAll 21.

10. Back to the Scanner Setup Menu and click on **Software Utility - ScandAll 21**.
11. The ScandAll 21 installation wizard will appear. Click next and follow the prompts to complete the installation.
12. Once all of the above is completed then remove the Scanner Setup CD, **Reboot** your system, and **go to Step E**.

### Step D: Installing the drivers from our Web Page.

#### Installing the ASPI-Twain driver.

The STI-Twain drivers are not supported by Windows NT, consequently, you must install the ASPI-Twain driver.

1. Create a new folder and name it **Fujitsu Downloads**.
2. Next go to the following link and click on [Drivers and Downloads](#).
3. Fill in the pre-registration box when it pops up and continue to the drivers download page.
4. Afterwards click on **ASPI Twain Software Drivers**.
5. Scroll down the list of scanner models in the left column and select the appropriate **ASPI Twain driver** to the right of your scanner model.
6. Double click on the driver file name and the **File Download** box will popup.
7. Click on **Save** and then use the browse (or other folder navigation) button until you have the **Twain Download** folder you created in the Save As box.
8. Click **Save**.
9. When completed close the **Download Complete** window and go to the **Twain Download** folder.
10. Open the folder and you will see the saved driver file. Double click on the file to unzip it and the WinZip\* self-extractor box will popup. Click on browse and select the **Fujitsu Downloads** folder, then click on **Extract**. The file will begin to unzip and when finished a message box will report the number of files unzipped. Click on OK and close WinZip.
11. In the **ASPI Twain Download** folder locate the **setup.exe** file and double click. Afterwards follow the prompts and reboot when finished

# Fujitsu SCSI Scanner Installation Procedures

## Windows NT 4.0

### Installing the ISIS driver.

1. Create a new folder and name it **Fujitsu Downloads**.
2. Next go to the following link and click on [Drivers and Downloads](#).
3. Fill in the pre-registration box when it pops up and continue to the drivers download page.
4. Afterwards click on **ISIS Software Drivers**.
5. Scroll down the list of scanner models in the left column and select the appropriate **ISIS driver** to the right of your scanner model.
6. Double click on the driver file name and the **File Download** box will popup.
7. Click on **Save** and then use the browse (or other folder navigation) button until you have the **ISIS Download** folder you created in the Save As box.
8. Click **Save**.
9. When completed close the **Download Complete** window and go to the **ISIS Download** folder.
10. Open the folder and you will see the saved ISIS driver file. Double click on the file to unzip it and the WinZip\* self-extractor box will popup. Note and accept the default folder it is creating then click on **Extract**. The file will begin to unzip and when finished a message box will report the number of files unzipped. Click on OK and close WinZip.
11. In the new **ISIS** folder that you noted earlier locate the **setup.exe** file and double click. Afterwards follow the prompts and reboot when finished.

### Installing ScandAll 21.

1. Create a new folder and name it **Fujitsu Downloads**.
2. Next go to the following link and click on [Drivers and Downloads](#).
3. Fill in the pre-registration box when it pops up and continue to the drivers download page.
4. Afterwards click on **Software Utilities**.
5. Double click on the file name and the **File Download** box will popup.
6. Click on **Save** and then use the browse (or other folder navigation) button until you have the **Scandall Download** folder you created in the Save In Box.
7. Click **Save**.
8. When completed close the **Download Complete** window and go to the **Scandall Download** folder.
9. Open the folder and you will see the saved **Scandall** file. Double click on the file to unzip it and the WinZip\* self-extractor box will popup. Click on browse and select the **Scandall Download** folder, then click on **Extract**. The file will begin to unzip and when finished a message box will report the number of files unzipped. Click on OK and close WinZip.
10. In the **Scandall Download** folder locate the **Scandall.exe** file and double click. Afterwards follow the prompts and when completed go to **Step E**.

# Fujitsu SCSI Scanner Installation Procedures

## Windows NT 4.0

### Step E: Unlocking the shipping lock.

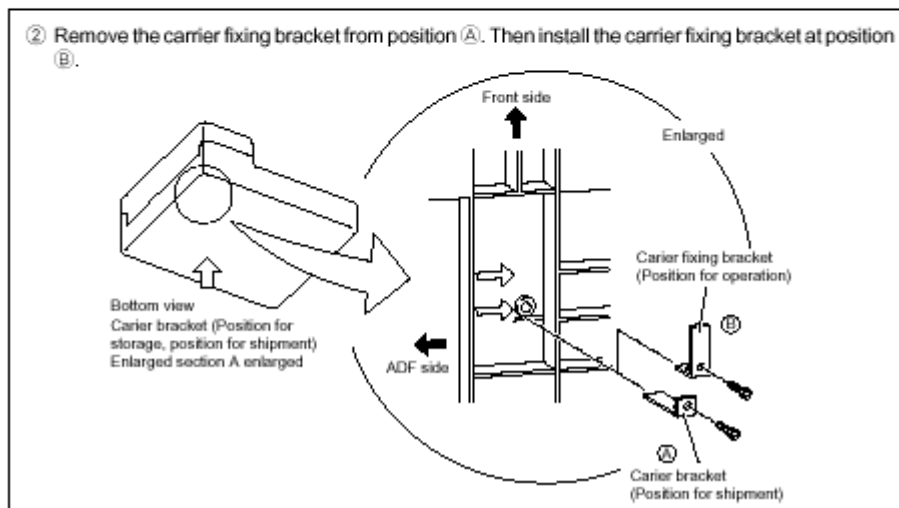
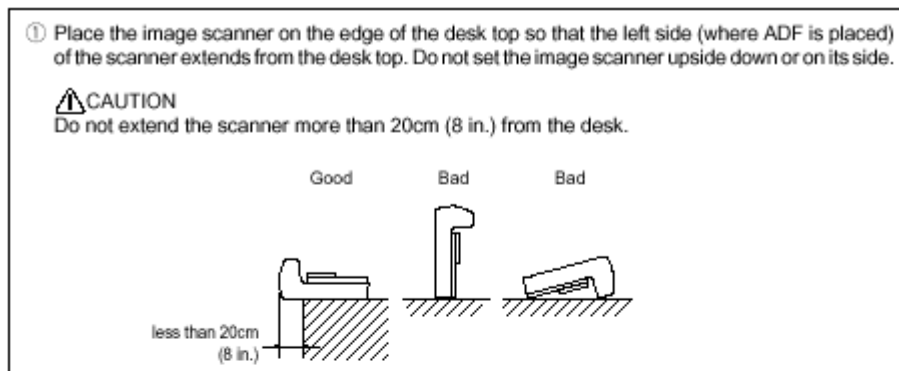
If your model scanner does not have a flatbed then proceed to Step F.

The flatbed model scanners typically include a lock on the flatbed designed to protect the scanner during shipment. Before the scanner can be used the shipping lock must be unlocked. To unlock it do the following:

1. Located the shipping lock slider tab or knob underneath the end of the scanner.
2. Slide or rotate the lock to the unlock position.

If your model has the old style “L” bracket shipping lock.

3. Slide the scanner to its side as shown in figure below.
4. Unscrew the retainer screw and remove the shipping bracket.
5. Place the shipping bracket in the “use position” slot and secure it with the retainer screw (see figure below).
6. Place scanner back in its normal position.



# Fujitsu SCSI Scanner Installation Procedures

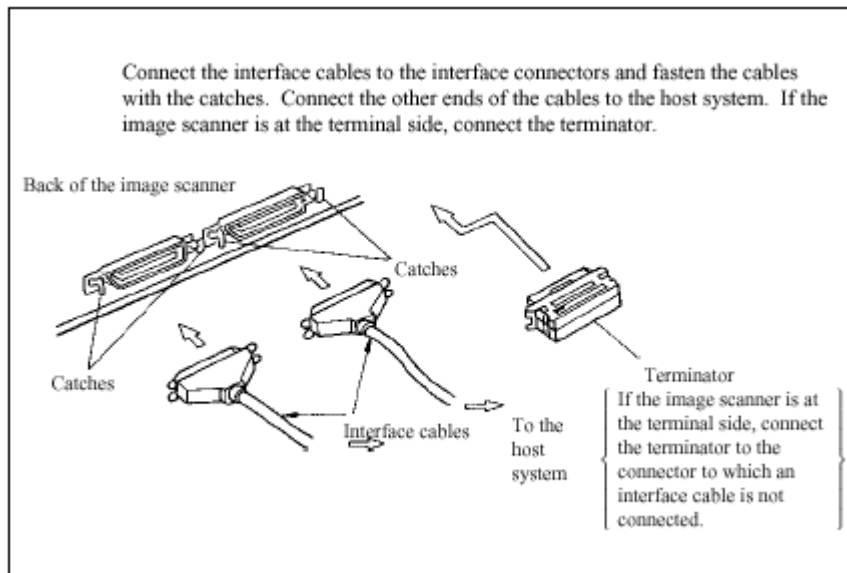
## Windows NT 4.0

### Step F: Connecting the Scanner.

**Warning!** Before proceeding ensure that the power is off when connecting or disconnecting the SCSI cable to the scanner or workstation. Failure to follow the procedure above could result in damage to the SCSI card, scanner, and/or your system.

The default SCSI ID setting for the 5000/4000 series scanners is 5 and for the 3000 series scanners is 6. However, selecting a different SCSI ID may be required when there are several devices on a SCSI chain. Changing the SCSI ID will vary depending on the model that you have. On some models you change the SCSI ID by accessing the scanner's Setup Menu through the front panel. On other models you physically change the SCSI ID selector on the back of the unit. Please consult your user manual for which method to use with your model. Setting the SCSI ID to 0, 1, or 7 is NOT recommended as these settings are typically reserved for hard drives and the SCSI host adapter.

Next if the scanner is the last device (only device) on the SCSI chain then it must be terminated. If the scanner is not the last device on the SCSI chain, then the terminator should be removed or turned off before connecting it to the next SCSI device. Many models of our scanners have automatic termination built in. Some of our older models will require a plug in terminator (see figure below). Please consult your user manual for which method to use with your model.



Typically the SCSI ports are located on the back of the scanner (the one exception being the Fi-5650C which is on the front). Depending on the model the SCSI port connector(s) may be any one of the following:

- A. DB25 Pin
- B. 50-pin Centronics
- C. 50-pin High Density (HD-50) or
- D. 68-pin Wide SCSI.



## Fujitsu SCSI Scanner Installation Procedures Windows NT 4.0

Use the appropriate cable to connect the scanner to the SCSI controller in your PC and ensure that all connections are securely fastened. To identify the type of connector for your model please consult the user manual or refer to the Scanner Hardware Interface Specifications Web page.

Finally connect the power cord to the scanner and a wall outlet then turn on the scanner. For those models without a power switch plug in the power supply to the back of the scanner. To establish communication between the Scanner and your PC system turn on the scanner prior to turning on your system. The scanner power and LED/LCD display will light up. Next after the scanner completes its startup initialization the LED/LCD will display either ready or the number one. This indicates that the scanner is ready.

### **Step G: Scanning with ScandAll 21.**

1. Launch ScandAll 21 by clicking on the shortcut link on your desktop or manually by clicking on **Start, Programs, Scanner Utility for Microsoft Windows, then ScandAll 21.**
2. After the **Untitled Screen** has open, click on **Scan** and choose **Select Source.**
3. **Select the Fujitsu Twain source** for your scanner by **Highlighting** it and **clicking OK.** You will only need to do this once unless you are scanning with multiple sources.
4. Once you are back at the Untitled Screen click on **Scan** and select **To View** this time. The **Twain User Interface** will popup.
5. **Select** the scanning parameters that you wish to use – **Color mode, resolution, paper size,** etc...
6. Next under **Scan Type** choose either **ADF** or **Flatbed** in the dropdown box.
7. Place your document in the ADF or on the Flatbed face down and **click** on the **Scan** button.
8. After the document is scanned **close** the **Twain User Interface** and the image will appear on the Untitled Screen.

Congratulations! You have successfully completed and tested your scanner installation.

### **Step H: Installing third party software applications.**

After you have successfully installed all the Fujitsu software and hardware, then it is time to install any additional third party scanning software that you wish to use. Please follow the software manufacturer's instructions for installation.

\*If you do not have any unzipping software installed on your system, you can download a free evaluation copy at [www.winzip.com](http://www.winzip.com).