



NSK

**PRODUCTS
2014**



**NEW ZEALAND
TOLL FREE 0800 44 33 21**

NSK COUPLINGS



NSK LED COUPLING
LED Optic
ORDER CODE: P1001-600
\$488.00

Also available with water control
ORDER CODE: P1001-601
\$739.00



MODEL FM-CL-M4
Non-Optic
ORDER CODE: P434-051
\$309.00



MODEL KCL-LED
Optic
ORDER CODE: P1005-600
\$829.00

For KaVo® MULTiflex® LUX with water volume adjuster

NSK HIGH SPEED TURBINES



45 DEGREE ANGLED HEAD FOR SECTIONING MOLARS

Ti-Max X450L Optic

ORDER CODE: P1078
- 3-Ports Water Jet
- 21W of power
- Air expelled from the gap of head cap
- Solid titanium

- For NSK Coupling
\$1,748.00

SOLID TITANIUM



MICRO MINI HEAD FOR UPPER 7'S, PAEDODONTICS, ENDO ACCESS, CAVITY PREPARATIONS

S-Max Pico Optic

ORDER CODE: P1140
Smallest head size in the world
Head size is 8.9 x 9 mm

- For Short Shank FG burs (ø1.6)

\$1,440.00

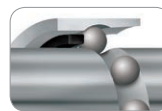
STAINLESS STEEL

NSK PRECISION TECHNOLOGY



NON-RETRACTION VALVE

The Non-Retraction Valve is integrated inside NSK couplings and air motors. It prevents retraction of contaminated fluids into the handpiece water lines. In combination with the Clean Head System, the Non-Retraction Valve provides a method to effectively reduce possible internal contamination.



"ISB" INTEGRATED SHAFT BEARINGS

In the NSK ISB, the shaft itself forms the inner race. Unification of the shaft and the inner race provide higher rigidity which reduces vibration and guarantees more accurate and consistent cutting.



SCRATCHLESS DURACOAT

DURACOAT, NSK's latest surface enhancement technology, takes advantage of the non allergic and biocompatible properties of titanium to further improve durability. DURACOAT creates a smooth, scratch resistant surface which is comfortable to hold.



CERAMIC BEARINGS

Ceramic Bearings are 25% harder than conventional steel bearings but are only half the weight. Because frictional wear between the ball bearings and the bearing retainer is significantly reduced the efficiency and durability is substantially increased.



CELLULAR GLASS OPTICS

Cellular Glass Optic delivers brilliant illumination, is highly durable and will not deteriorate, even after repeated sterilisation.



ERGONOMIC COMFORT GRIP

NSK is dedicated to designing handpieces that adapt comfortably to the human hand, even during extended treatment periods. Titanium is the optimum material to offer lightweight comfort, tactile sensitivity, and the ideal grip for gloved hands.

NSK HIGH SPEED TURBINES



\$2,065.00

\$2,065.00

\$2,065.00

\$1,440.00

\$1,440.00

SOLID TITANIUM

STAINLESS STEEL

	Ti-Max X500L Optic ORDER CODE: P495	Ti-Max X600L Optic ORDER CODE: P496	Ti-Max X700L Optic ORDER CODE: P497	S-Max M500L Optic ORDER CODE: P1001	S-Max M600L Optic ORDER CODE: P1002
SOLID TITANIUM BODY	●	●	●		
STAINLESS STEEL BODY				●	●
SCRATCHLESS DURACOAT	●	●	●		
HEAD SIZE	∅ 10.3 x H 11.7mm	∅ 11.2 x H 13.6mm	∅ 13.2 x H 13.6mm	∅ 10.6 x H 12.5mm	∅ 12.1 x H 13.5mm
CELLULAR GLASS OPTICS	●	●	●	●	●
LED ILLUMINATION	●	●	●	●	●
PUSH BUTTON CHUCK	●	●	●	●	●
COOLANT SPRAY OUTLETS	4	4	4	4	4
CLEAN HEAD SYSTEM	●	●	●	●	●
VARIABLE RPM (MAXIMUM)	450,000	440,000	360,000	450,000	430,000
POWER WATTS	17W	21W	22W	16W	17W
INTEGRATED SHAFT BEARINGS	●	●	●	●	●
CERAMIC BEARINGS	●	●	●	●	●
DUAL AIR JET	●	●	●	●	●
INTEGRATED AIR REGULATOR	●	●	●	●	●
BUR TYPE	Short shank FG	FG	FG	Short shank FG	FG
ERGONOMIC COMFORT GRIP	●	●	●	●	●
AUTOCLAVABLE	●	●	●	●	●
THERMO-DISINFECTOR	●	●	●	●	●
AVAILABLE IN OPTIC & NON-OPTIC	●	●	●	●	●

Handpieces also available to connect to KaVo, W&H, Sirona, Bien Air couplings



PUSH BUTTON CHUCK

Push Button Chuck is NSK's original push button auto-chuck mechanism that provides tension to the bur grip during rotation. It allows one-touch bur insertion and removal without tools. The bur lock mechanism is designed so that bur retention strength increases when high loads are applied to the bur.



QUATTRO WATER SPRAY

The NSK Quattro Water Spray effectively cools the entire surface of the bur with a high cooling effect, leaving no areas untreated.



CLEAN HEAD SYSTEM

The patented NSK Clean Head System is a special mechanism designed to automatically prevent the entry of oral fluids and other contaminants into the handpiece head thereby prolonging the life of the bearings.



AUTOCLAVABLE

All NSK handpieces offer superior durability and performance, even when frequently autoclaved. All handpieces can be autoclavable up to 135°C.



THERMO-DISINFECTOR

Disinfecting handpieces prior to autoclaving is a recommended practice for more effective infection control. The symbol mark on your NSK product means you can clean and disinfect the handpiece using a thermo-disinfectant.



OPTIC: INDICATES WITH LED OPTIC ILLUMINATION



NSK Factory Authorised Technical Service
For all NSK handpiece service contact:
NSK Oceania Freephone 0800 44 33 21
or visit www.nsktech.com.au

MODEL
Ti-Max Z
Z15L



Ti-Max Z15L

Optic
ORDER CODE: C1039
4:1 Reduction
- Single Spray
- For CA burs (ø2.35)
- Max Speed: 10,000 min⁻¹

\$2,425.00

MODEL
Ti-Max Z
Z10L



Ti-Max Z10L

Optic
ORDER CODE: C1040
16:1 Reduction
- Single Spray
- For CA burs (ø2.35)
- Max Speed: 2,500 min⁻¹

\$2,574.00

MODEL
Ti-Max X
X12



X12L

Optic
ORDER CODE: C606
\$2,482.00

X12

Non-Optic
ORDER CODE: C616
- Single Spray
- For CA burs (ø2.35)
- Max Speed: 4,000 min⁻¹

\$1,688.00

MODEL
S-Max
M15L



S-Max M15L

Optic
ORDER CODE: C1025
4:1 Reduction
- Single Water Spray
- For CA burs (ø2.35)
- Max Speed: 10,000 min⁻¹

\$1,716.00

MODEL
Ti-Max X
X57L



Ti-Max X57L

Optic
ORDER CODE: C609
16:1 Reduction
- Special Dust Proof
- For Screw-in Cups and Brushes
- 360° Rotation
- Without Spray
- Max Speed: 2,500 min⁻¹

\$1,668.00

MODEL
FX
FX57



FX57

ORDER CODE: C1054002
4:1 Reduction
- For screw-in cups and brushes
- 360° Rotation
- Paste Defense System
- w/o Spray
- Max Speed: 5,000 min⁻¹

\$530.00

MODEL
FX
FX15



FX15

ORDER CODE: C1053002
4:1 Reduction
- Latch type prophy cups
- For CA burs (ø2.35)
- Push Button Chuck
- Ball Bearing
- Max Speed: 10,000 min⁻¹

\$708.00

MODEL
P200
Phatelus probe



Phatelus Probe

ORDER CODE: P411
Trans illumination instrument with brilliant LED output when connected to the NSK LED coupling.

\$787.00

Powerful transillumination for cracks and caries detection.

Ti-Max Z

SOLID TITANIUM

Exceptionally Durable Handpiece Series

Additional features and benefits of the Ti-Max Z Series

- The Highest Durability in its class (optimal gear shape and special diamond coated gears [DLC])
- The Smallest head and slimmest body in its class
- Superior Visibility and Better Access
- Amazingly quiet operation
- Excellent Ergonomic Shape

Ti-Max X

SOLID TITANIUM

Premium Handpiece Series

Features and benefits of the Ti-Max Z and X Series

- Solid Titanium Body with Scratch Resistant DURACOAT
- Cellular Glass LED Optics
- NSK Patented Clean Head System
- No Vibration Integrated Shaft Bearings on Turbine Handpieces
- Ceramic Bearings for extra durability
- Push Button Chuck for easy bur release

S-Max M

STAINLESS STEEL

Performance Handpiece Series

- Stainless Steel Slim Body
- Cellular Glass LED Optics
- NSK Patented Clean Head System
- No Vibration Integrated Shaft Bearings on Turbine Handpieces
- Ceramic Bearings for extra durability
- Push Button Chuck for easy bur release

FXseries

STAINLESS STEEL/ALUMINIUM

Economy Plus Handpiece Series

- Stainless Steel Head/Aluminium Body
- Integrated Handpiece
- Push Button Chuck (excludes FX57 model)

EXseries

Economy Handpiece Series

- Heads and Shanks sold separately
- External Water Spray
- Push Button Chuck (excludes some models)

MODEL
EX
ER4M



MODEL ER4M

ORDER CODE: C634002
4:1 Reduction
\$413.00



MODEL ER10M

ORDER CODE: C635002
10:1 Reduction
\$544.00

MODEL
Ti-Max Z
Z95L



Ti-Max Z95L

Optic
ORDER CODE: C1034
1:5 Increasing
- Quattro Spray
- For FG burs (ø1.6)
- Max Speed: 200,000 min⁻¹
- Head Size: 13.4mm length
\$2,210.00

MODEL
Ti-Max Z
Z85L



Ti-Max Z85L

Optic
ORDER CODE: C1062
1:5 Increasing
- Miniature Head - Max Speed: 200,000 min⁻¹
- Single Spray - Head Size: 11.8mm in length
- For FG burs (ø1.6) * Short Shank burs only
\$2,210.00

MODEL
S-Max
M95L



S-Max M95L

Optic
ORDER CODE: C1023
1:5 Increasing
- Quattro Water Spray - Max Speed: 200,000 min⁻¹
- For FG burs (ø1.6) - Head Size: 13.8mm length
- Ceramic Bearings
\$1,837.00

LED Red Band
Contra-angle Handpiece

MODEL
Ti-Max Z
Z45L

Optic Z45L

ORDER CODE: C1064
- 1:4.2 Increasing
- Max Speed: 168,000 min⁻¹
- For FG burs (ø1.6)
\$2,359.00



Two-Way Spray Function
The world's first two-way spray function allows you to instantly choose a mist or jet spray depending on the conditions and procedure with an enclosed dedicated tool. The water jet spray prevents subcutaneous emphysema in surgical procedures, and the mist spray effectively cools the bur while cutting.

MODEL
Ti-Max Z
Z25L



Ti-Max Z25L

Optic
ORDER CODE: C1038
1:1 Direct Drive
- Single Spray
- For CA burs (ø2.35)
- Max Speed: 40,000 min⁻¹
\$1,710.00

MODEL
S-Max
M25L



S-Max M25L

Optic
ORDER CODE: C1024
1:1 Direct Drive
- Single Water Spray
- For CA burs (ø2.35)
- Max Speed: 40,000 min⁻¹
\$1,410.00

MODEL
FX
FX25



MODEL FX25

ORDER CODE: C1052002
1:1 Direct Drive
- For CA burs (ø2.35)
- Push Button Chuck
- Ball Bearing
- Max Speed: 40,000 min⁻¹
\$481.00

MODEL
EX
NAC - Y
FPB-Y



MODEL EC-30M

ORDER CODE: C100007
1:1 Direct Drive
\$186.00



MODEL FPB-Y

ORDER CODE: C875
- For CA burs (ø2.35)
- Clean Head System
- Push Button Chuck
- Ball Bearing
- Max Speed: 40,000 min⁻¹
\$296.00



MODEL NAC-Y

ORDER CODE: C032
- For CA burs (ø2.35)
- Latch type
- Max Speed: 30,000 min⁻¹
\$132.00

MODEL
EX
AR-Y



MODEL AR-Y (S)

ORDER CODE: C187
- For screw-in cups and brushes
- Max Speed: 5,000 min⁻¹
\$117.00



MODEL AR-Y (K)

ORDER CODE: C188
- For snap-on cups
- Max Speed: 5,000 min⁻¹
\$117.00

MODEL
Ti-Max X
X65L



Ti-Max X65L

Optic
ORDER CODE: H273
1:1 Direct Drive
- Clean Head System
- Single Spray
- For HP burs (ø2.35)
- For CA burs (ø2.35)*
- Max Speed: 40,000 min⁻¹
*Need to insert the supplied bur stopper
\$2,038.00

MODEL
S-Max
M65



S-Max M65

Non-Optic
ORDER CODE: H1008
1:1 Direct Drive
- Single Water Spray
- For HP burs (ø2.35)
- For CA burs (ø2.35)*
- Max Speed: 40,000 min⁻¹
*Need to insert the supplied bur stopper
\$852.00

MODEL
FX
FX65



MODEL FX65

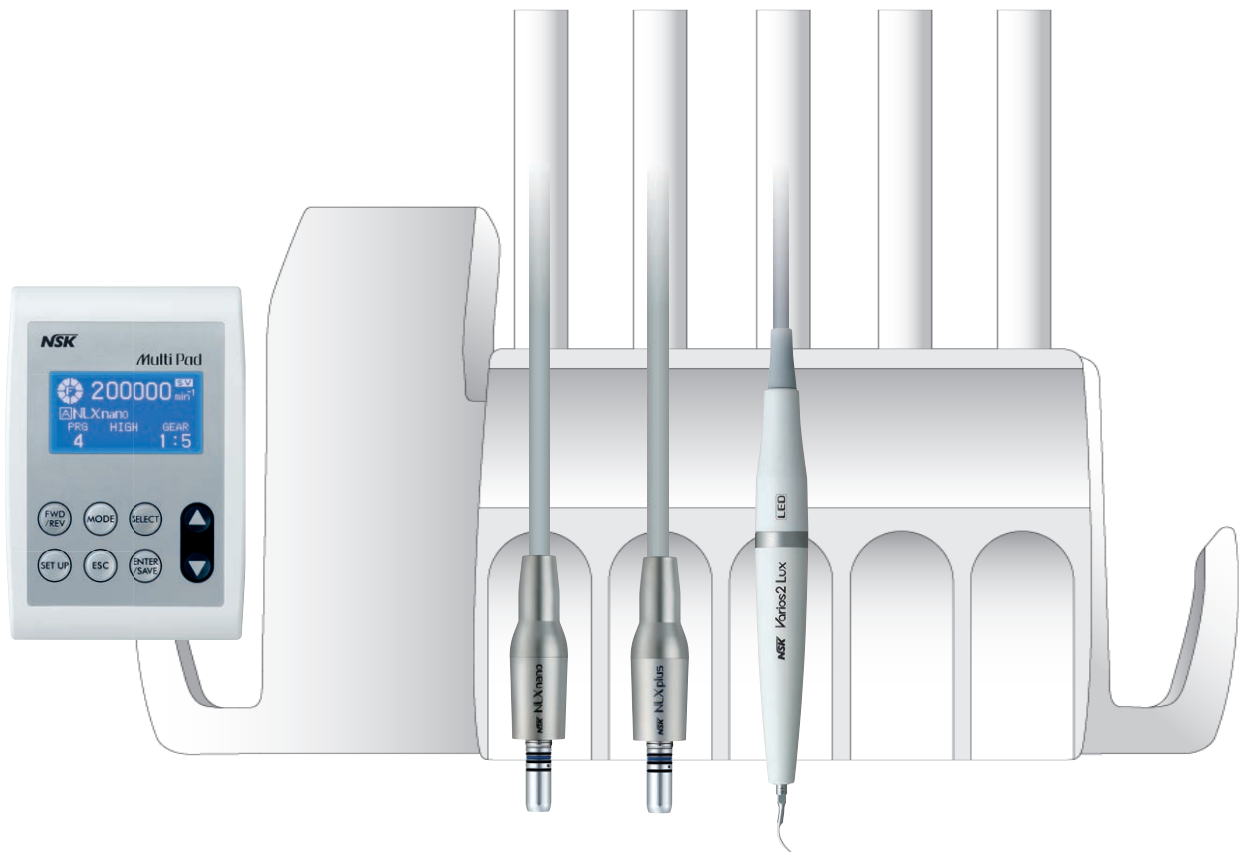
ORDER CODE: H1014002
1:1 Direct Drive
- For HP burs (ø2.35)
- Max Speed: 40,000 min⁻¹
\$480.00

MULTI PAD

The NSK Multi Pad uniquely enables control of the NLX nano and NLX plus electric Micro Motors and also the Varios 170 ultrasonic scaler - all in one system.

When partnered with Multi Pad, the NLX plus reaches speeds of 100 – 40,000 min⁻¹ and delivers up to 4 Ncm torque, whilst offering 3 user-friendly endo modes; auto-reverse on, auto-stop and auto-reverse off.

NSK's Multi Pad can also be used to control all functions of the Varios 170 ultrasonic scaler. The Multi Pad auto selects the motor or scaler in use. At the touch of a button control speed, torque and gear ratios to suit specific clinical procedure. The Multi Pad can store up to eight individual programs (motor only). NSK Multi Pad is designed to integrate into most brands of new or older dental units.



MINI ELECTRIC MICRO MOTORS



NANO INTEGRATED SYSTEM

NANO PORTABLE SYSTEM

NLX nano LED ILLUMINATION

MODEL: NLX nano S230 (230V)
ORDER CODE: Y1001362

Features:

- Speed: 2,000–40,000 min⁻¹
- Torque to 3.4 Ncm
- LED illumination

Includes:

- NLX nano control unit
- NLX nano motor and chord
- AC adaptor (230V)

\$5,785.00



NLX nano LED ILLUMINATION

INTEGRATED SYSTEM WITH MULTIPAD CONTROL

MODEL: NLX nano STD/MultiPad
ORDER CODE: NLXNANOIntegratedpad

Features:

- Speed: 2,000–40,000 min⁻¹
- Torque to 3.4 Ncm
- LED illumination

Installation not included.

\$4,934.00



NLX plus with Endo Function

**LED ILLUMINATION
INTEGRATED SYSTEM WITH MULTIPAD CONTROL**

MODEL: NLX Plus/MultiPad
ORDER CODE: NLXPLUSINTEGRATEDPAD

Features:

- Auto-reverse functionality for endodontic procedures.
- Speed: 100–40,000 min
- Torque to 4 Ncm
- LED illumination

Installation not included.

\$5,194.00

MINI AIR MICRO MOTORS



Ti-Max X205L

**OPTIC LED
AIR MOTOR
Internal water spray**

Simple connection to your existing hose

The Ti-Max X205L delivers powerful, smooth and quiet rotation, with loads of torque at all variable speeds. Connect to all brands of E-type optic and nonoptic contra-angle handpieces.

ORDER CODE: M1013
1:1 Direct Drive
- Internal Spray
- LUX Coupling
- Non-Retraction Valve
- Max. 20,000 min⁻¹
- Forward and reverse direction
\$2,049.00



S-Max M205

**NON-OPTIC
AIR MOTOR
Internal water spray**

Enhanced balance – Powerful torque

The S-Max M205 presents an economical micromotor that connects direct to your existing hose. All brands of E-type non-optic handpieces readily connect for optimum performance.

ORDER CODE: M1007001
1:1 Direct Drive
- Stainless Steel Body
- Internal Water Spray
- Max. 25,000 min⁻¹
\$1,265.00



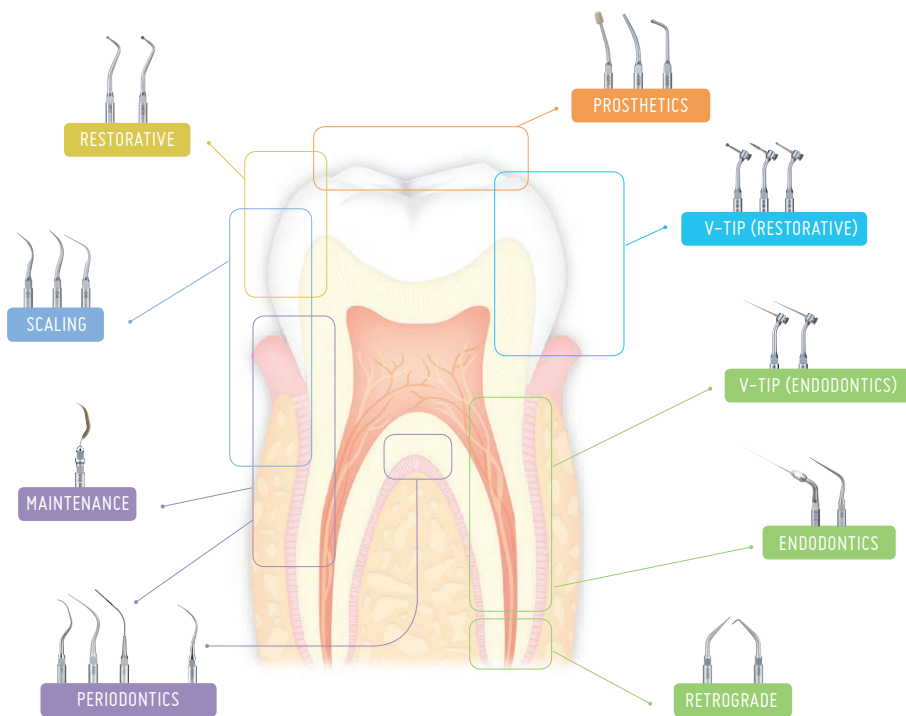
FX205 M4

**NON-OPTIC
AIR MOTOR
External water spray**

Enhanced balance – Powerful torque

The FX205 M4 presents an economical micromotor that connects direct to your existing hose. All brands of E-type non-optic handpieces readily connect for optimum performance.

ORDER CODE: M1005002
1:1 Direct Drive
- External Water Spray
- Max. 25,000 min⁻¹
- Aluminium
\$1,105.00



NSK OFFERS A WIDE CHOICE OF VARIOS ULTRASONIC SCALER TIPS FOR A VARIETY OF CLINICAL APPLICATIONS

Please contact NSK Oceania or your NSK Dealer to request the NSK Tips Book which lists in detail all NSK Varios Tips and applications.

Varios 970

LED ILLUMINATION

Portable Multi Function Ultrasonic Scaler for optimum clinical versatility

Varios 970 Optic Complete Set
 MODEL: VA970LED
 ORDER CODE: Y1001-168
\$4,717.00



Varios 170

LED ILLUMINATION

Integrated Multi Function Ultrasonic Scaler. The smallest module for easy integration into new and existing dental equipment

Varios 170 Optic Complete Set
 MODEL: VA170LUXS1
 ORDER CODE: Y1001-351
 *Installation not included
\$2,353.00





VARIOS SERIES IPIEZO SCALERS PROVIDE OUTSTANDING PERFORMANCE AND VERSATILITY

Traditional NSK precision technology transforms the power and versatility of Piezo Scalers. Presenting the NSK Varios series, available with twin LED shadowless illumination as an option. The NSK iPiezo engine assures stable power output by automatically adjusting to the optimal frequency as the sensor monitors the load at the tip. The slimmer, autoclavable handpieces is the slimmest and lightest of all handpieces. The large range of quality precision tips, in popular patterns, covers all treatment applications.



Varios 370

LED ILLUMINATION
Benchtop Multi Function
Ultrasonic Scaler

Varios 370 Optic
Complete Set
MODEL: VA370LUX(270V)
ORDER CODE: Y1001-388
\$2,854.00

Varios 570

LED ILLUMINATION
Benchtop Multi Function
Ultrasonic Scaler

Varios 570 Optic
Complete Set

MODEL: VA570LUX(230V)
ORDER CODE: Y1001-746
\$3,426.60



Ti Max S970L - Air Scaler

LED ILLUMINATION

Integrated Multi Function Ultrasonic Scaler
NSK S970L Air Scaler delivers a stable, wide power range with easy swivel power adjustment. Offering an extensive tip range for a variety of applications from general scaling to root canal irrigation, even to minimally invasive procedures. Coupling direct the NSK LED coupling S(&)L will provide daylight like illumination direct to the site. Titanium body and sleek seamless design make S970L comfortable to grip, even throughout extended procedures. Attaches direct to NSK LED coupling

ORDER CODE: T1005
\$2,398.00



Prophy-Mate neo

AIR POLISHING SYSTEM

Features:

- Removal of plaque and discolouration
- Preparation for pit and fissure sealant
- Etching of enamel, dentine and porcelain prior to bonding
- Preparation for pit and fissure sealant
- Sturdy and reliable
- Simple to operate
- Easy maintenance
- Quick connect to major brands of turbine couplings
- Available with 60° or 80° nozzles



FOR NSK COUPLING
 MODEL PMNG-PTL-P
 ORDER CODE: Y135-029
\$1,767.00

Available to fit KaVo®, Sirona®,
 W&H®, Bien-Air®
\$1,885.00

Flash Pearl

AIR POLISHING POWDER
CALCIUM BASED, SPHERICAL PARTICLES
 Suitable for all brands of Air Polishers

FLASH pearl granules are small and spherically shaped compared to particles of sodium bicarbonate powder. This means more contact and better access to clean all target areas effectively. A wider working angle also provides greater treatment safety. The spherical shape of FLASH pearl gives a smooth finish to tooth surfaces compared to the effects of the sharper-edged particles of sodium bicarbonate. FLASH pearl leaves teeth sparkling without damaging dental enamel.



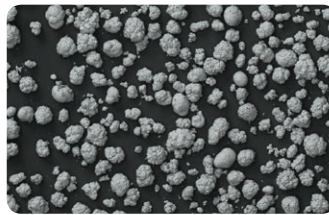
Features:

- 4 bottles packed in a box
- Each bottle contains 300 gms
- Comes with a measuring cup for your convenience
- Safe for patients suffering high blood pressure
- Natural taste
- Prevents handpiece from clogging
- Quick and powerful stain removal
- Does not damage the tooth's surface

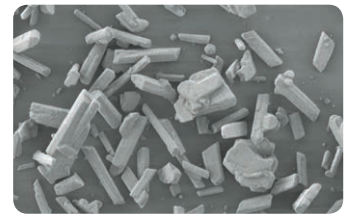
MODEL: FLASH pearl
 (4 x 300 g bottles)
 ORDER CODE: Y900-698
\$195.00

SPHERICAL GRANULES REMOVE RESIDUES FROM EVERY CORNER

FLASH pearl granules are small and spherically shaped compared to particles of sodium bicarbonate powder. This means more contact and better access to clean all target areas effectively. A wider working angle also provides greater treatment safety.



FLASH pearl



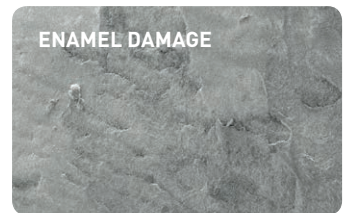
Conventional Sodium Bi-Carbonate powder

FLASH PEARL ROLL SMOOTHLY OVER TOOTH SURFACES

The spherical shape of FLASH pearl gives a smooth finish to tooth surfaces compared to the effects of the sharper-edged particles of sodium bicarbonate. FLASH pearl leave teeth sparkling without damaging dental enamel.



FLASH pearl avoids surface damage



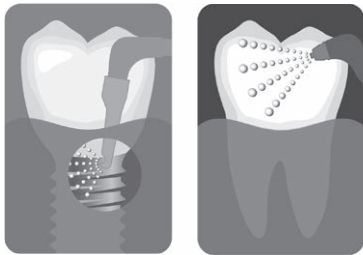
Conventional Bi-Carbonate is aggressive

Perio-Mate BioFilm Eraser

Perio-Mate is used in the treatment of periodontal pockets and peri-implantitis. Avoiding injury to the soft tissues and root surfaces inside delicate periodontal pockets during cleaning procedures is crucial. The Perio-Mate ultrafine water spray and glycine-based Perio-Mate Powder match to gently eradicate biofilm in periodontal pockets in just 20 seconds. The combination of Perio-Mate slim nozzle and fine, thin and flexible plastic nozzle tips make procedures safer while offering optimal visibility.

FOR NSK COUPLING
 MODEL: PER-PTL-P
 ORDER CODE: Y1002654
\$1,767.00

Available to fit KaVo®, Sirona®,
 W&H®, Bien-Air®
\$1,885.00



Speeds indicated above correspond to micromotor speed selected.



Perio-Mate Powder

BIO FILM ERASER POWDER
 Glycine-based, mean particle size $\leftarrow 45\mu\text{m}$.

- Features:
- 4 bottles packed in a box
 - Each bottle contains 100 gms
 - Comes with a measuring cup for your convenience

MODEL: Perio-Mate powder (4x100g bottles)
 ORDER CODE: Y900938
\$195.00



Taskal Wizard

COMPACT AND LIGHTWEIGHT
Handy Cordless Prophylaxis Micromotor
18 Speed Settings (with 4:1 adaptor)

TASKAL Wizard Complete Set
 MODEL: TASKAL Wizard (230V)
 ORDER CODE: Y140-982
\$2,576.00



Gear Ratio	Head Speeds min^{-1}									
1:1	2,000	3,000	4,000	5,000	6,000	7,000	8,000	9,000	10,000	
4:1	500	750	1,000	1,250	1,500	1,750	2,000	2,250	2,500	



Surgic Pro+ for Implant and Oral Surgery

LED ILLUMINATION

Multi Function Brushless Surgical Micromotor with USB data storage facility. Intelligent, intuitive and accurate.

One unit for many surgical applications with USB port for easy data storage. Control unit with Advanced Handpiece Calibration (AHC) – High Torque Accuracy NSK Surgic Pro+ automatically calibrates the micromotor and the handpiece to the rotational resistance of each individual handpiece prior to operation. Surgic Pro+ offers speed and high torque accuracy for maximum safety during operation.

FEATURES:

- Variable Speed 200–40,000 min
- Torque 5-80Ncm
- Power 210W
- Ergonomics Lightweight and compact
- Noise and Vibration Minimal
- Illumination LED





Surgical and Implants VarioSurg3 for Piezo Surgery

LED ILLUMINATION

Multi Function Piezo Electric Unit for Minimally Invasive Surgery
Sinus lifts, extractions and bone grafting are all too simple for this powerful and intuitive machine.

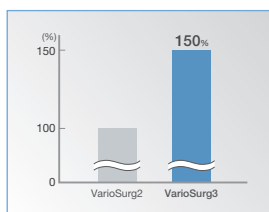
- Minimal invasive surgery. Eliminates heat and reduces bleeding during operation
- Ergonomics and visibility. Optic handpiece is lightweight and slimline
- Safe. Soft tissue damage is minimal even during accidental contact
- Accuracy and precision. Minimal blood during cavitation ensures a clearer surgical site

FEATURES:

- Major Power Boost
- 3 Modes (SURG, ENDO, PERIO)
- Selectable Burst Mode for added power
- 9 Programs (SURG x 5, ENDO x 2, PERIO x 2)
- Adjustable LED Light Intensity
- Automatic Cleaning Mode
- Feedback Function
- Auto Tuning Function
- Dynamic Link Feature

Major Power Boost – Up 50 Percent

Capable of generating a maximum of 150 percent of the power its predecessor produced (in Surg Mode), the VarioSurg3 effectively shortens treatment time in combination with any of the sharp tips available.



MAJOR POWER BOOST – UP 50 PERCENT

Capable of generating a maximum of 150 percent of the power its predecessor produced (in Surg Mode), the VarioSurg3 effectively shortens treatment time in combination with any of the sharp tips available.

*When setting power level more than 100 percent, please make sure to use tips that correspond to high power.



SURGIC PRO Complete set

ORDER CODE: Y1001932
Surgic Pro+ w/20:1 HP, LED + USB
\$10,010.00

ORDER CODE: Y1001933
Surgic Pro w/20:1 HP, LED + no USB
\$9,094.00

ORDER CODE: Y1001934
Surgic Pro w/20:1 HP, Non-Optic + no USB
\$7,794.00

ORDER CODE: Y1002096
Surgic Pro+ w/20:1 Dismantleable HP, LED + USB
\$10,010.00



Sterilization Cassette

MODEL: SG-CASE
ORDER CODE: 20001348
\$658.00

Irrigation Tube

(PACK OF 5)
ORDER CODE: Y900-113
\$117.00



I-CART Mobile Trolley

ORDER CODE: Z299-002
\$1,914.00



VARIOSURG3 Complete Set

MODEL: VarioSurg3 (230V)
ORDER CODE: Y1002726
\$12,994.00

Link the SURGICPRO+ and VARIOSURG3

FOR DUAL POWER AND PERFORMANCE WITH THE LINK FUNCTION
MODEL: LINK SET (STAND & CABLE)
ORDER CODE: Y1002729
\$1,164.00



Sterilization Cassette

MODEL: VA-SG-CASE
ORDER CODE: 20001326
(Included in complete set)
\$658.00



VARIOSURG Basic Kit

MODEL: BASIC H-S KIT
ORDER CODE: Y1002775
(Includes H-SG1, SG3, SG5, SG6D, SG7D, SG11 tips)
(Included in complete set)
\$2,275.00





Surgical Implant Handpieces – Optic

20:1 Reduction

- Titanium Body with Scratch Resistant DURACOAT
- Cellular Glass Optics
- Push Button Chuck
- Max. Speed : 2,000 min-1

Optic MODEL: X-SG20L

ORDER CODE: C1003

\$2,834.00

Non - Optic MODEL: SG20

ORDER CODE: C1010

\$1,727.00



Dismantling Surgical Implant Handpieces – Optic

20:1 Reduction

- Titanium Body with Scratch Resistant DURACOAT
- Max. Speed : 2,000 min-1
- Max. Torque : 80 Ncm

Optic MODEL: X-DSG20L

ORDER CODE: C1068

\$3,055.00

Non - Optic MODEL: X-DSG20

ORDER CODE: C1067

\$2,327.00



20:1 Reduction

- Titanium Body with Scratch Resistant DURACOAT
- Cellular Glass Optics
- Max. Torque : 80 Ncm
- Hexagon Chucking System

Optic MODEL: X-DSG20Lh

ORDER CODE: C1076

\$3,055.00

Non - Optic MODEL: X-DSG20h

ORDER CODE: C1075

\$2,327.00



ISD 900

Cordless Prosthodontic Screwdriver with Torque Calibration System (TCS)

NSK is introducing the iSD900 cordless screwdriver with Torque Calibration System (TCS) for prosthodontic screw fixing procedures. iSD900 will guarantee precise torque control due to the unique NSK torque calibration system which is extremely easy to use. The iSD900 will help to save time and allow precise risk-free tightening of screws. Clinicians can depend on iSD900 for safety and productivity.

Torque Calibration System (TCS)

iSD900 Complete Sets

MODEL: iSD900 (230V) ORDER CODE: Y1001358

Calibration Mode • Torque Calibrator

\$3,756.00



Surgical Handpieces - Optic

1:3 Increasing

- Titanium Body with Scratch Resistant DURACOAT
- Cellular Glass Optics
- Push Button Chuck
- Max. Speed : 120,000 min-1 Optic

Optic MODEL: X-SG93L
ORDER CODE: C1003

\$2,834.00

Non - Optic MODEL: X-SG93
ORDER CODE: C1007

\$2,603.00



1:1 Direct Drive

- Titanium Body with Scratch Resistant DURACOAT
- Cellular Glass Optics
- Push Button Chuck
- Max. Speed : 40,000 min-1

Optic MODEL: X-SG25L
ORDER CODE: C1011

\$2,508.00



Straight Handpieces - Optic

1:1 Straight Handpiece

- Titanium Body with Scratch Resistant DURACOAT
- Cellular Glass Optics
- For HP burs(ø2.35)
- For CA burs(ø2.35) with bur stopper
- Max. Speed : 40,000 min-1

Optic MODEL: X-SG65L
ORDER CODE: H1009

\$2,470.00

Non - Optic MODEL: X-SG65
ORDER CODE: H1038

\$1,983.00



Straight Handpieces - Non Optic

MODEL: SGS-ES

ORDER CODE:H264

1:1 Direct Drive

- For surgical burs (ø2.35)
- Twist chuck
- Max. Speed : 40,000 min-1

\$1,584.00



MODEL: SGS-E2S

ORDER CODE:H266

1: 2 Increasing

- For surgical burs (ø2.35)
- Twist chuck
- Max. Speed : 80,000 min-1

\$1,857.00



20°Angle Handpieces - Non Optic

MODEL: SGA-ES

ORDER CODE:H263

1:1 Direct Drive

- For surgical burs (ø2.35)
- Twist chuck
- Max. Speed : 40,000 min-1

\$2,196.00



MODEL: SGA-E2S

ORDER CODE:H265

1: 2 Increasing

- For surgical burs (ø2.35)
- Twist chuck
- Max. Speed : 80,000 min-1

\$2,576.00



Endo-Mate AT

MODEL: ENDO-MATE AT (230V)

ORDER CODE: Y1002190

\$1,885.00

FEATURES

This compact endodontic motor has a wide range of torque and speed settings, allowing use Ni-Ti files from virtually all major manufacturers.

- Fits major brands of files
- Torque control, with an auto-reverse function
- Compact and stylish design desktop unit
- Wide screen provides high visibility
- Flat control panel allows simple and user friendly operation
- Lightweight, smart and high visibility handpiece



Endo-Mate TC2

Cordless

MODEL: ENDO-MATE TC2 (230V)

ORDER CODE: Y1001027

\$2,358.00

The large LCD, simple 5-key operation and a lightweight, cordless handpiece assure user friendly, even during the most delicate endodontic procedures. The Auto Reverse & Alarm Function alerts you with an audible signal to advise the load is about to reach the preset torque level, meaning that the torque can be unloaded even prior to the Auto Reverse activating. TC2 offers 5 programs and supports most major brands of Ni-Ti files.





iPex II

Precision apex locator

MODEL: iPEX II
 ORDER CODE: Y1002208
\$1,767.00

FEATURES

- High-precision root canal measurement generated by using SmartLogic
- Auto-detects the apex accurately in any conditions, dry or wet
- A stylish and compact body requiring only a small space. It can even be located
- On the dental equipment console
- Three different alert sounds depending on the location of the file tip, ensuring precise procedures
- A big three-colour LCD panel with very low reflectivity, allowing Clinicians to accurately and instantly monitor procedure progress
- Energy saving and low operation cost

ULTIMATE XL SERIES

Ultimate XL series offers the choice of 4 control units for easy location in any available space, and to accommodate all user requirements. All functions are controlled by the NSK microcomputer which assures smoothness throughout all speed ranges including start and stop

FEATURES

- Choice of Torque or Compact Micro Motor for any control system
- Ripple-free smooth rotation with 180° vector control system
- Powerful and stable torque across the entire speed range
- Ergo handpiece design for long term user hand comfort
- Lightweight compact handpiece body reduces hand fatigue and improves balance
- Unique dust-proof mechanism prevents internal contamination and premature wear
- Minimal vibration and noise from hermetically shielded micro motor
- 30% increased chuck strength enables application for a wide variety of materials

Ultimate XL Bench Top System

TORQUE MICROMOTOR
MODEL: UMXL-GT (230V)
ORDER CODE: Y141-469

COMPACT MICROMOTOR
MODEL: UMXL-GC (230V)
ORDER CODE: Y141-470

\$3,055.00



Ultimate XL-D Bench Top Tower System

TORQUE MICROMOTOR
MODEL: UMXL-DT (230V)
ORDER CODE: Y141-504

COMPACT MICROMOTOR
MODEL: UMXL-DC (230V)
ORDER CODE: Y141-505

\$3,055.00



MIO

CORELESS MICROMOTOR

The Mio system delivers stepless, smooth speed adjustment from 3,000 – 35,000 RPM. The lightweight handpiece Micro Motor offers immediate response to speed adjustment and incorporates a dust proof mechanism. Available with Laboratory micro motor or E-Type micro motor. Delivered complete with control system, cord and micro motor.

MODEL: MIO MR (230V)
ORDER CODE: Y140-804
(with hp)

\$1,814.00

MODEL: MIO E (230V)
ORDER CODE: Y140-805
(no hp)

\$1,554.00



Compact Micromotor

FEATURES- MAX. TORQUE: 6.0 NCM
- WEIGHT : 181 G (CORD NOT INCLUDED)

ORDER CODE: Y141-444

\$1,888.00



Torque Micromotor

FEATURES: - MAX. TORQUE: 8.7 NCM
- WEIGHT: 219 G (CORD NOT INCLUDED)

ORDER CODE: Y141-440

\$1,888.00



Ultimate XL-K Knee Control System

TORQUE MICROMOTOR
MODEL: UMXL-KT (230V)
ORDER CODE: Y141-495

COMPACT MICROMOTOR
MODEL: UMXL-KC (230V)
ORDER CODE: Y141-496

\$3,055.00



Ultimate XL-F Floor Type Foot Control System

TORQUE MICROMOTOR
MODEL: UMXL-FT (230V)
ORDER CODE: Y141-513

COMPACT MICROMOTOR
MODEL: UMXL-FC (230V)
ORDER CODE: Y141-514

\$3,055.00



Volvere Vmax

CORELESS MICROMOTOR
A robust and reliable "workhorse" used in Dental Laboratories around the world. Capability for application in both porcelain and acrylic production processes. The single control unit is compact and can be mounted in either vertical or horizontal bench locations.

MODEL: Vmax35RV Pack (240V)
ORDER CODE: Y140-868

\$2,464.00



Presto Aqua LUX

LED ILLUMINATION
Achieve optimum performance and precision with the lubrication-free air turbine handpiece featuring LED illumination and water coolant spray.

OPTIC
MODEL: PRESTO AQUA LUX
ORDER CODE: Y1001-150

\$5,194.00



NSK iCARE+

AUTOMATIC SYSTEM FOR CLEANING, DISINFECTING & LUBRICATING HANDPIECES

Introducing NSK iCare+ a revolutionary new and unique system that simultaneously and automatically cleans, disinfects and lubricates inside and outside of 4 High Speed and/or Low Speed handpieces in less than 10 minutes

NSK iCare+ eliminates viruses and bacteria with a success rate rising to 99% after cleaning and disinfection with N-Clean and N-Cid. NSK has made a series of tests in several European Institutes according to the norm ISO 15883 valid in all European Union Countries. These tests prove the effectiveness of the equipment and products used during the cleaning (N-Clean) and disinfection (N-Cid) phases.

- Guaranteed consistent performance
- Validation & traceability
- Detects instrument type spray/water external or internal
- Consistent repetition of cycles

MODEL: iCARE+ COMPLETE
ORDER CODE: S103001

P.O.A



PANA SPRAY PLUS (500ML)

PANA SPRAY Plus is a specially formulated, highly effective general handpiece and air motor lubricant. Frequent application of PANA SPRAY Plus will ensure handpiece and air motor performance and durability. Apply PANA SPRAY Plus every time before autoclaving any handpiece or air motor. Adapters available for all handpiece brands.

ORDER CODE (SINGLE CANS) Z182-100G
\$47.00

ORDER CODE (PK OF 6) Y900-630G
\$281.00



iCARE

iCare sets a new standard for handpiece maintenance systems. In one stylish and compact system it offers both ease of use and multiple functions to assure ideal cleaning and lubrication. The correct solution volume is preset based on handpiece type, and maintenance is initiated at the touch of a button. The chuck cleaning system keeps chucks pristine, and the purging select mode allows purge time to be adjusted depending on the situation for truly comprehensive maintenance. Thanks to its stylish and compact body, iCare is also space efficient and is harmonious to the clinical practice environment.

iCare automatically cleans and lubricates up to 4 Turbine and/or Low Speed handpieces in less than 2 minutes. The full 1.2 litre on-board solution tank is sufficient for up to 8,500 individual handpiece maintenance cycles.

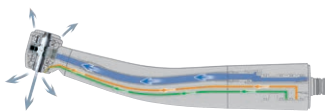
MODEL: iCARE C2
 ORDER CODE: Y1002787
\$4,700.00

MODEL: iCARE C3
 ORDER CODE: Y1002788
\$4,990.00

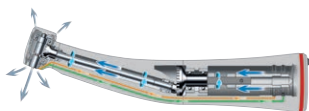


ROTATIONAL MAINTENANCE SYSTEM

A major advantage of rotation during the cleaning process is the saturation of all internal components. Up to 4 Handpieces are cleaned completely and lubricated.



HIGH SPEED HANDPIECES



LOW SPEED HANDPIECES



CARE & MAINTENANCE INSTRUCTIONS

1. PREPARATION

- Remove handpiece from tubing
- Remove bur
- Do not submerge handpiece in any solution

2A. AUTOMATIC CLEANING AND DISINFECTION USING A THERMO/WASHER DISINFECTOR

- Always ensure that handpieces are placed on the correct adaptors
- Cleaning agent pH level must be between 2.5-10.5
- Rinse cycle must be activated

OR (if automatic method is not available see 2b below)

2B. MANUAL CLEANING USING TAP WATER, BRUSHES AND CLOTHS

- Clean handpiece under cold or tepid running water using a soft to medium brush

3. INSPECT

- Inspect handpieces for debris and repeat above process if necessary

4. DRYING

- The drying procedure is normally part of the cleaning programme of the thermo/washer disinfectant alternatively dry manually using a tissue

5A. AUTOMATIC LUBRICATION USING NSK ICARE

- Check machine is connected and working correctly
- Connect handpiece to correct port
- Select appropriate cycle (refer to NSK iCare user manual)
- Always lubricate straight handpieces with closed chuck and blanking piece inserted
- Always complete steps 2,3,4,5 in quick succession
- Lubricate the Chuck Mechanism by using the chuck cleaning function on the iCare

5B. MANUAL LUBRICATION USING NSK PANA SPRAY PLUS

- Select correct nozzle for handpiece (see list below)
- Shake spray can
- Keep spray can in upright position
- Insert nozzle into handpiece
- Always lubricate straight handpieces with closed chuck and blanking piece inserted
- Spray handpiece for 2-3 seconds holding a clean tissue over the head end
- Check tissue for debris and if oil is not running clean repeat process until handpiece is clean and free of debris
- Lubricate chuck mechanism using PANA SPRAY plus with tip nozzle weekly
- Always complete steps 2,3,4,5 in quick succession

PURGE out excess lubricant from the handpiece after manual lubrication

6. PACKAGING

- Pack in accordance with current applicable standards/legislation if using a B or S type autoclave. If using an N type autoclave, pack AFTER sterilisation

7. STERILISATION

- Sterilise in a steam steriliser (autoclave) at a temperature not exceeding 138°C in accordance with current applicable standards. Always remove from autoclave as soon as cycle is complete

8. STORAGE

- Store handpieces protected from dust, dirt and microorganisms, ideally in an upright position (head up)
- Handpieces MUST be stored dry
- Always comply with expiry dates of sterilised items in accordance with current applicable standards/legislation

PANA SPRAY PLUS NOZZLES ALWAYS CHOOSE THE RIGHT ONE FOR YOUR HANDPIECE



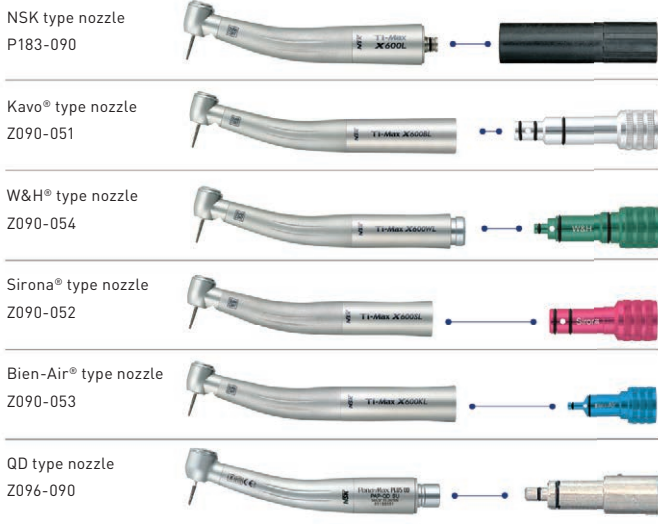
ALWAYS SELECT THE CORRECT ADAPTOR BEFORE CLEANING AND LUBRICATION



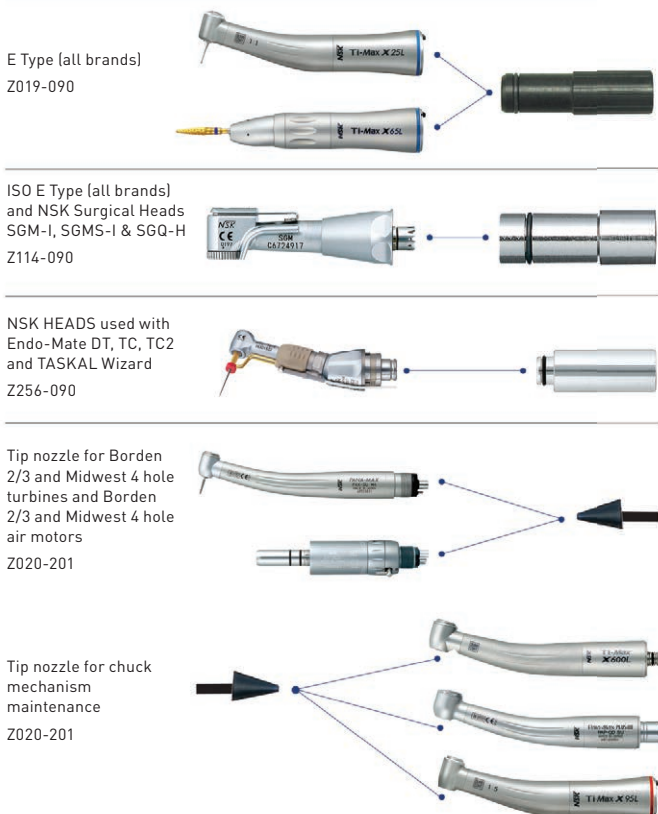
ALWAYS SELECT THE CORRECT SPRAY NOZZLE BEFORE CLEANING & LUBRICATION

It is preferable to purge any excess solution by briefly operating the handpiece. When purging cover the handpiece head with a tissue. Firmly attach the nozzle onto the valve at the top of the Pana Spray Plus can. Keep the spray can in an upright position.

HIGH SPEED OPTIC & NON OPTIC HANDPIECES THAT CONNECT DIRECT TO:



CONTRA-ANGLES, HANDPIECES, SHANKS & HEADS:



AUTOMATIC CLEANING AND LUBRICATION USING NSK ICARE IS SIMPLE



A. Check oil level indicator light. Add more oil if required (light will come on when oil comes down to 150ml or less).



B. Open the door and connect 1, 2, 3 or 4 handpieces to the correct handpiece adaptor. Close the door (iCare will not operate if the door is open).

S: Short / M: Middle / L: Long



C. Select the desired purge programme Mode. By selecting the selection button (1, 2 or 3), until the mode light is illuminated.

- S Mode for High Speed handpieces (air turbines) [Cycle time 28 seconds]
- S Mode for Blue band Low Speed handpieces and NSK heads [Cycle time 50 secs]
- M (Middle) Mode for High Speed handpieces (air turbines) [Cycle time 30 seconds]
- M (Middle) Mode for Blue band Low Speed handpieces and NSK heads [Cycle time 64 secs]
- L (Long) Mode for High Speed handpieces (air turbines) [Cycle time 33 seconds]
- L (Long) Mode for Blue band Low Speed handpieces and NSK heads [Cycle time 84 secs]

Start button



D. Press the 'Start' button. The door should not be opened until the cycle is finished.

SUPPORT

PRODUCT INFORMATION & TECHNICAL SUPPORT
 1300 44 33 21 (Australia) or 0800 44 33 21 (New Zealand)
 Email: info@nskoceania.com.au
www.nskoceania.com.au

YOUR NSK HANDPIECES CAN BE SERVICED IN AUSTRALIA BY THE COMPANY THAT MANUFACTURED THEM IN JAPAN.
TO FIND OUT MORE PLEASE CALL FREE PHONE 0800 44 33 21 OR VISIT OUR NSK TECH WEBSITE, [NSKTECH.COM.AU](https://www.nsktech.com.au)

For expert factory service and fast response send your NSK products direct to NSK Tech.

BY POST:

NSK Tech, PO Box 163,
Rosebery, Sydney NSW 1445

BY COURIER:

NSK Tech, Unit 22, 198-222 Young Street,
Waterloo, Sydney NSW 2017

PRECISION SERVICE

Located in Sydney, the Australian NSK Technical Centre is a unique NSK factory-equipped technical service facility with the capability to rapidly restore all NSK products to their original NSK factory high performance specifications.

TECH EXPERTISE

- Rapid response – fast turnaround
- Dedicated service only for NSK products
- Individual product service history record maintenance
- Expert NSK factory-trained Precision Technicians
- NSK Tech uses only genuine NSK parts, components, tools and factory diagnostic equipment
- NSK factory-guaranteed
- Certified ISO 9001-2000



SCAN QR CODE
TO VIEW THE
NSK TECH
WEBSITE





OUR TECH SERVICE CAN ATTEND TO ANY NSK PRODUCT





NSK PRODUCTION IS
ENVIRONMENTALLY FRIENDLY



NSK

WWW.NSKOCEANIA.CO.NZ

TOLL FREE 0800 44 33 21 INFO@NSKOCEANIA.COM.AU

PRICES QUOTED ARE RECOMMENDED RETAIL & DO NOT INCLUDE GST
PRICES ARE CORRECT AS AT MARCH 3 2014
AND ARE SUBJECT TO CHANGE WITHOUT NOTICE