

EKLIPTIK

EBS User's Manual

A guide for preoperative planning of bone fracture medical procedures with EBS

EBS User's Manual

CONTENTS	
User Manual	3
Terminology	4
User Interface	5
Toolbar	5
View Toolbox	6
Segmentation Toolbox	7
Labels Toolbox	8
Reduction Toolbox	10
Screw Widget	13
Fixation Plate Widget	14
Objects	15
Selection Properties	16
View Area	17
View Types	18
Main Menu	20
User Interaction	22
Options Dialog	24
Tasks	25
Segmentation	25
Importing Examination	25
Filtering Dataset	25
Region Of Interest (ROI)	26
Segmentation	26
Further Processing	26
Reduction	26
Analysis	26

USER MANUAL

Welcome to the EBS user's manual. EBS is a software application for preoperative planning of bone fracture medical procedures based on a real patient data.

This manual is a guide through the concepts and building blocks of the application. It also serves as a reference for a standard application procedures.

EBS operates on a real patient data. CT examination in form of DICOM files is accepted as an input. 3D mesh models are build from the examination in segmentation process. While the segmentation is largely automated it still requires some user input. The 3D mesh models of bone fragments can be viewed in any arbitrary 3D projection as well as manipulated as to simulate reduction. Fixation plates and screws can be inserted into the model.

Get acquainted with [Terminology](#), [User Interface](#) and start [using EBS](#).

TERMINOLOGY

Dataset	Medical examination comprising of a stack of slices.
Label	Set of voxels in dataset. Labels are used to represent elements of interest e.g. bone fragment. Label shape can be visualized in 3D.
Slice	Two dimensional image containing crossection trough the body.
Voxel	A single pixel, cell in the slice grid.

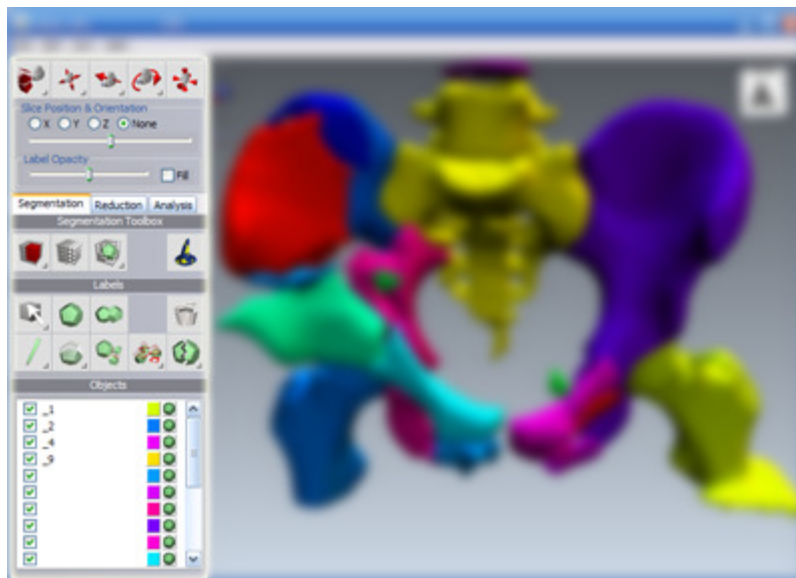
USER INTERFACE

EBS main window comprises of a [toolbar](#) on the left hand side, a document [view area](#) on the right hand side and the [main menu](#) at the top of the window.

Document viewing and editing is done by executing commands, using the tools and manipulating widgets. [User Interaction](#) describes the distinction between those in detail.

Global options can be set using [Options Dialog](#).

TOOLBAR



Toolbar on the left hand side

The toolbar contains [tools and commands](#) for viewing and editing of the document. The top part of the toolbox contains tools and commands for view manipulation - [View Toolbox](#) including a panel with properties for the currently active view. Below the panel is a task selector which shows additional tools and commands based on task selected:

- [Segmentation](#) :
 - [Segmentation Toolbox](#)
 - [Labels Toolbox](#)
- [Reduction](#) :
 - [Reduction Toolbox](#)

- [Analysis](#) .

At any time [Object List](#) or [Selection attributes](#) might be displaying as well.

VIEW TOOLBOX



Slice Tool

Shortcut:
Z

Click and/or drag mouse in a view to change the slice position. In slice and 3D view mouse click or drag will display slice at the position pointed by mouse. This tool can be also temporarily activated by clicking on the middle mouse button.



View Pan Tool

Shortcut:
X

Click and drag to pan the view. This tool can be temporarily activated by holding Alt + middle mouse button.



View Zoom Tool

Shortcut:
C

Click and drag to zoom the view. This tool can be temporarily activated by holding Alt + left and middle mouse button.

View Rotate Tool

Click and drag to rotate the 3D view. In dataset view this tool changes view projection.



Shortcut:
V



Viewpoint widget

Viewpoint widget can also be used to to change the viewpoint: click on surface to rotate the viewpoint to one of the predefined view orientations or drag to rotate freely. This tool can be temporarily activated by holding Alt + left mouse button.

View Reset



Click to reset the selected view to default.

SEGMENTATION TOOLBOX

Region Of Interest Tool



Define region of interest (ROI) - a volume which is used in further processing. ROI can be defined by manually by entering coordinates in tool panel or by dragging a mouse in dataset view. Drawing region in dataset view will modify only two dimensions of ROI, dimensions which are displayed in the view with the third one - depth - left unmodified. To draw all three dimensions bounding box has to be drawn in two dataset views displaying different orientation. Region is indicated by red rectangle.

Filter

Filter the dataset with low-pass filter. Dialog box offering filters is shown. There are 3 distinct smoothing filters available:



- **Recursive Gaussian** - this filter is using ITK RecursiveGaussianImageFilter filter to process the dataset.
- **Gradient Anisotropic Diffusion** - this filter is using ITK GradientAnisotropicDiffusionImageFilter to process the dataset.
- **Curvature Anisotropic Diffusion** - this filter is using ITK CurvatureAnisotropicDiffusionImageFilter to process the dataset.

Segmentation Tool



Segmentation tool creates initial label from the dataset based on voxel values. The tool sets a threshold value for the threshold filter. The threshold edge is drawn on the slice. Segmentation will be executed with a click on Apply button in the tool panel. Based on selected options some of the following filters might be executed on the label as a post processing step:

- **Opening** - ITK BinaryMorphologicalOpeningImageFilter

- **Opening by reconstruction** - ITK OpeningByReconstructionImageFilter
- **Hole filling** - ITK VotingBinaryIterativeHoleFillingImageFilter followed by GrayscaleFillholeImageFilter It is recommended to Select at least one opening filter as this will remove small isolated fragments which are usually artifacts of thresholding. **Clear all existing labels** will remove labels that are already there before the filter is run.

Segmentation Wizard



Wizard opens a new tool panel and guides a user through steps of segmentation process as described in [Segmentation task](#).

LABELS TOOLBOX

Labels are parts of whole volume which are of interest.

For the most part labels can be interpreted as bone fragments. EBS offers tools to create and manipulate labels. Initial label is usually created with Segmentation Tool.



Shortcut:
Q

Select Tool

Click on label in Dataset or 3D view to select it. Hold Shift while clicking to add to selection or Ctrl to remove object from selection. This tool can be used to select other types of objects as well. An alternative way to select objects is by clicking in the items in [Objects](#) box in the toolbox.



New Label

Create new, empty label.



Merge Labels

Merge selected labels into a new label.



Delete Label

Delete selected labels.

Paint Tool

Manually paint selected label. Painting is done in Dataset view. The tool shows options box with following settings:



- **Paint over** defines which objects to paint over.
- **Clear label** when set painting will clear the label.
- **Size** defines size of paintbrush in voxels.
- **3D** when selected the painting is done in multiple slices at once.
- **Isotropic** takes voxel physical size in each direction into account when size is defined.
- **Round** or **Square** defines a brush shape.

Fill Hole Tool



Click on hole to fill it. The tool works only on a single slice. The tool will not perform when hole is not closed.

Separate



Move spatially un-connected volumes in selected label into separate labels.

Split Tool



Split label into multiple labels based on seed points. Based on dataset labels grow from seed points. The seed points can be defined in dataset or 3D view. When seed point is clicked in 3D view it may move away from clicked point. This is to assure the optimal placement. Verify that seed point is still inside object to be separated. Split Tool uses ROI.

Cut Tool



Cut label by drawing a cutting plane. One or more cutting planes can be defined by clicking on the 3D view. Object separated will lay in one of the partitions of the cutting planes.

REDUCTION TOOLBOX



Select Tool

Shortcut:
Q

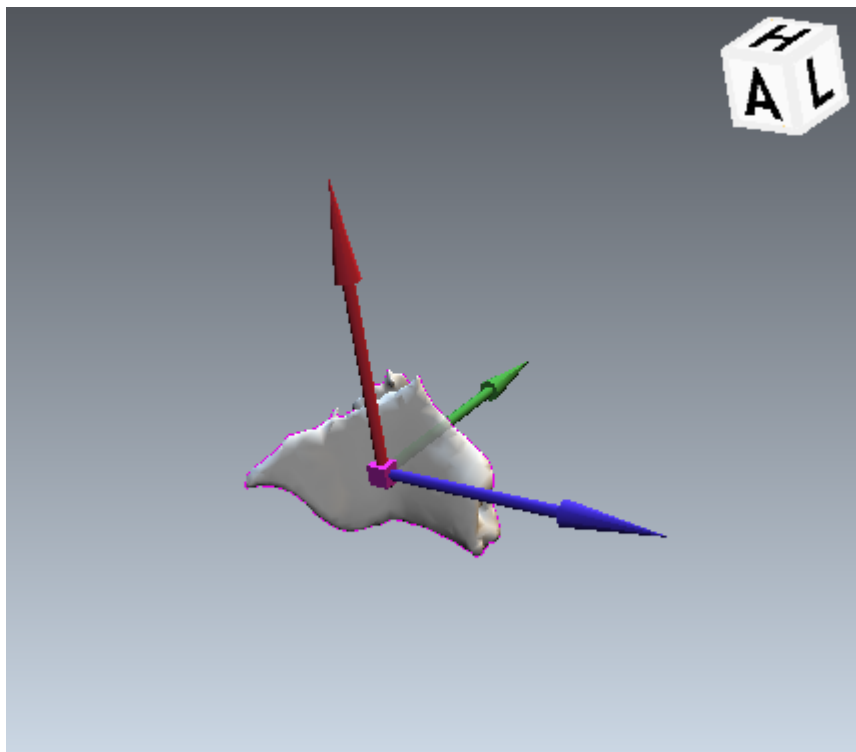
Click on object to select it. Hold Shift while clicking to add to selection or Ctrl to remove object from selection.

Translate Tool

Click and drag on handles to translate a selected object.



Shortcut:
W



Move Widget

Translation widget can be used in following ways:

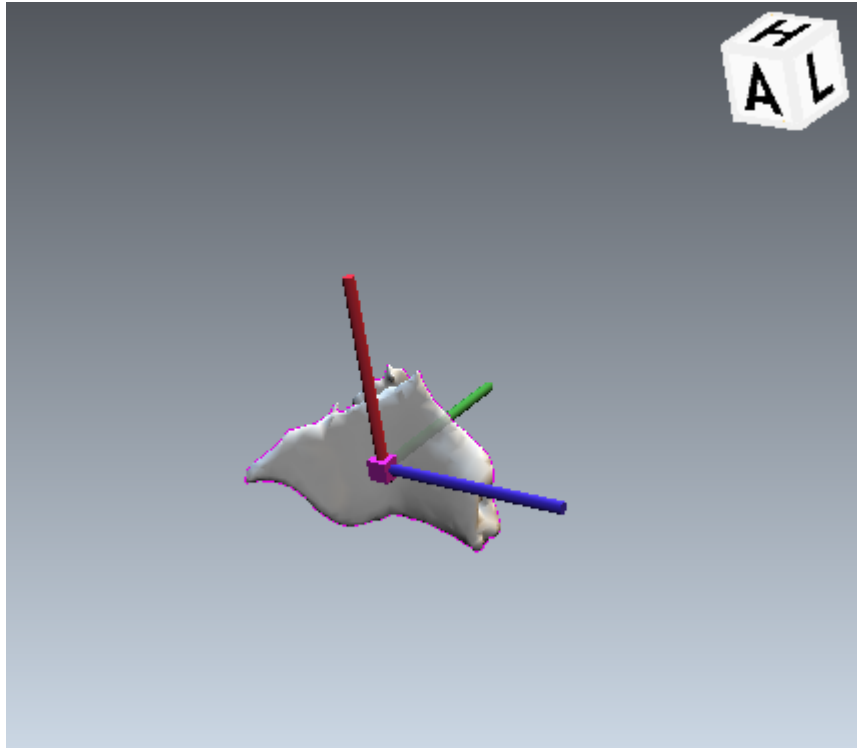
- Dragging one of the arrows will move object in the direction of the arrow.
- Dragging cube in the center will move the selected object to the surface of the object below the mouse cursor.
- Dragging near the center will move the object parallel to the screen surface.

Pivot Tool

Click and drag on handles to change center of rotation.



Shortcut:
E



Pivot Widget

Pivot widget can be used in following ways:

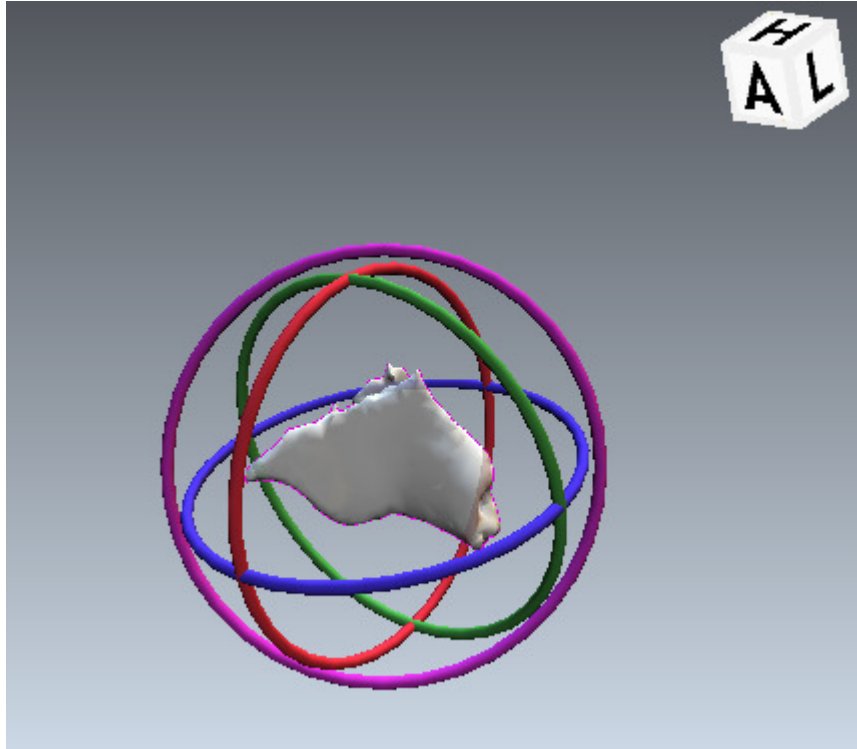
- Dragging one of the lines will move object in the direction of the line.
- Dragging cube in the center will move the pivot to the surface of the object below the mouse cursor.
- Dragging near the center will move the pivot parallel to the screen surface.



Shortcut:
R

Rotate Tool

Click and drag the handles to rotate selected object.



Rotation Widget

Rotate widget can be used in following ways:

- Dragging one of the circles will rotate object in the axis of that circle.
- Dragging the outermost circle will rotate the object in the axis perpendicular to the screen.
- Dragging near the center of the widget will rotate object freely.

Reset



Reset Transformation.

Add Screw Tool



Click on scene to add a new screw. Once screw is created [Screw Widget](#) can be used to edit its placement.

Add Fixation Plate Tool



Click on scene to add a new fixation plate. Once fixation plate is created [Fixation Plate Widget](#) can be used to edit its placement.

Delete Object

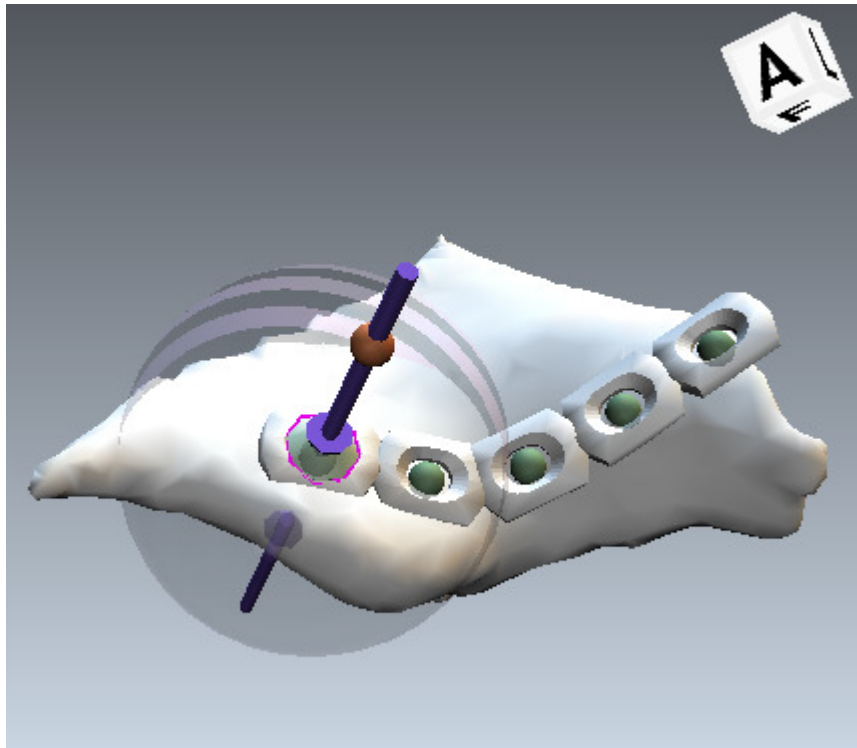


Delete selected fixation plate or screw.

SCREW WIDGET

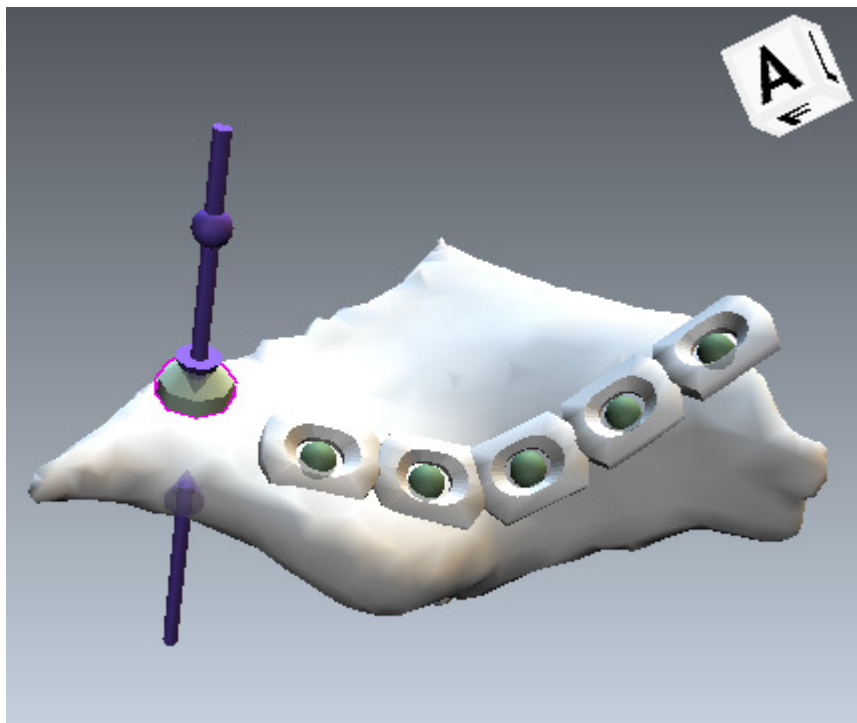
Screw widget is a widget for editing screw length and its placement.

It is displayed for every selected screw in form of arrows and balls. Those act as a handle and can be clicked and moved with the mouse:



Direction Handle

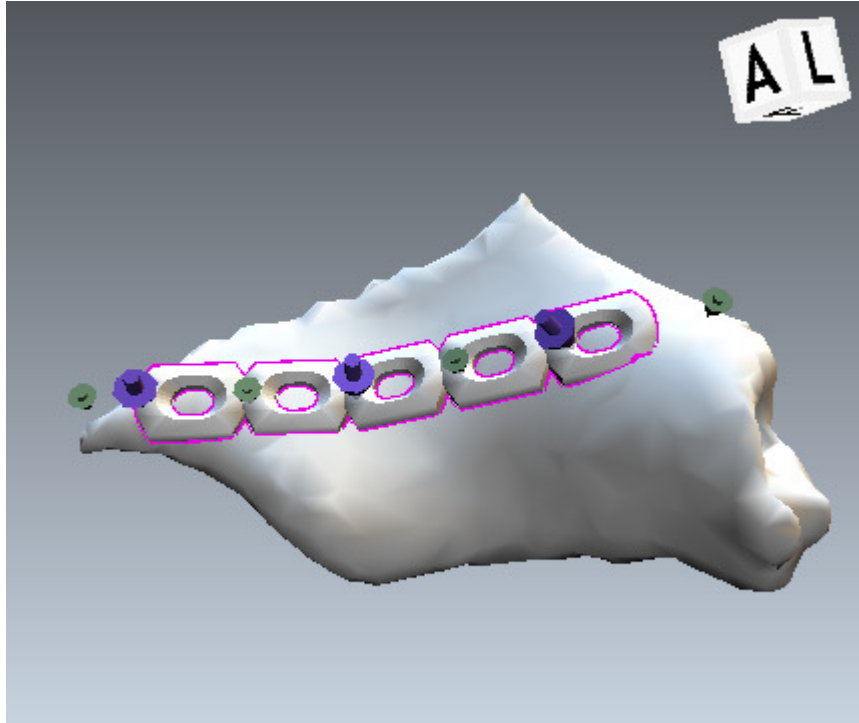
- When ball above the entry point arrow is clicked direction indicator is shown enabling change of direction. Screw will automatically adjust the length to the new exit point.



Screw widget

- When screw exit point arrow is dragged screw exit point is changed.
- When screw entry point arrow is dragged entry position is changed and either:
 - direction is changed so that exit point remains the same (when exit point has been previously manipulated)
 - direction is perpendicular to the normal at new entry point (when screw direction has been previously manipulated)
- Holes in all fixation plates elements contain placement handle. When clicked screw will be placed in fixation plate hole.

FIXATION PLATE WIDGET

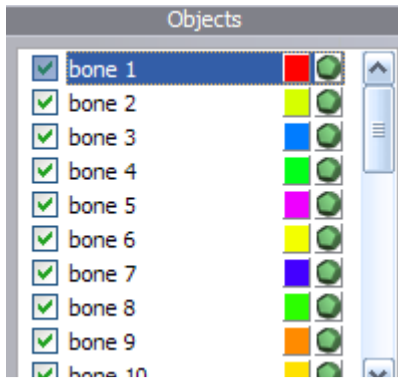


Fixation Plate Widget

Fixation plate widget is a widget for editing fixation plate placement. It is displayed for every selected fixation plate in a form of set of arrows. The arrows act as a handles and can be clicked on and dragged with the mouse:

- Indigo colored arrows annotate existing placement points. By dragging them on a bone fixation plate will change the shape. Dragging the placement arrow off the object will delete it.
- Clicking and dragging the green arrow will add a new placement point at the position of the arrow. This can be used to extend the fixation plate without changing the existing shape, when clicking on arrows on either extreme, or to control placement more precise, when clicking one of the inner arrows.






OBJECTS



Objects list

Objects box contains list of all labels, fixation plates and screws in the document. Each object is represented by one row in the list and contains following information:

- **Visibility.** Object is visible when check box is checked.
- **Name**
- **Color.** Color can be changed by clicking on the color button.
- **3D mesh status** for labels or object icon for fixation plates and screws. 3D mesh status shows the status of 3D mesh object in relation to the voxel data of a label. There are 4 status icons:

-  Mesh is build and it reflects current state of the label.
-  Label does not contain enough voxels to build mesh from it.
-  Mesh is not build or contains old state of the label. Build is required. Build process can be started by clicking on the icon.
-  Mesh is being built.
-  Mesh is already build, building collision detection mesh.

SELECTION PROPERTIES

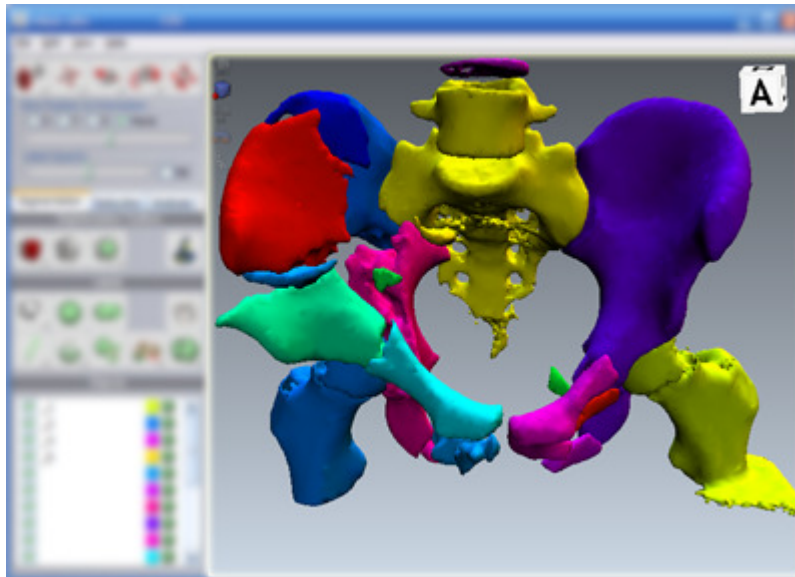
Selection Properties	
Name	screw
Length	10.655

Properties for selected Screw

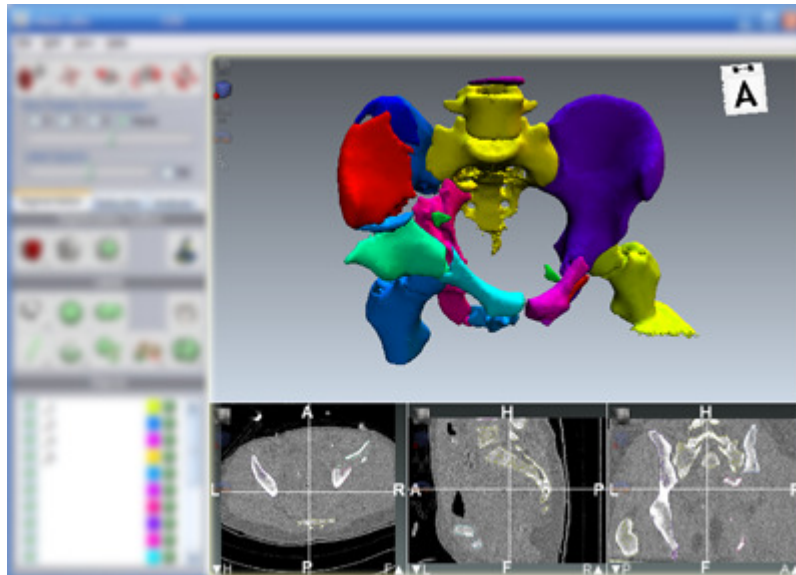
Selection contains properties of selected object or objects. Some of the properties can be modified by typing in new value.

VIEW AREA

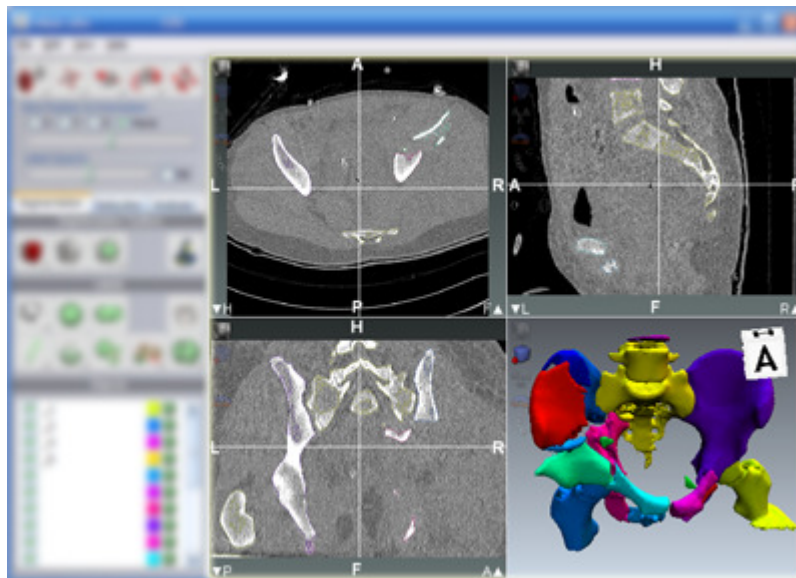
View area contains panes with [views](#) onto the document. Based on selected layout there is one or up to four panes displayed at the same time. View layout can be modified by selecting desired item from the *View|Layout* menu. Press spacebar in one of the panes to toggle between single pane layout and multiple view layout.



Single Pane Layout



Four Panes Split Bottom



Four Panes

VIEW TYPES

View displays visualization of document.

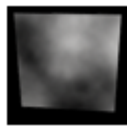
Based on view type visualization focus on different aspects of the data. View type of selected pane can

be modified by clicking on one of the options in *Views|Pane Contents*. Alternatively view type icon can be clicked inside any view. The view type icons are located on the top left hand side corner of every view.



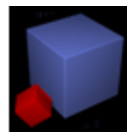
View type icons

Dataset View



Dataset view displays an orthogonal cross-section through the dataset. Three orientations are possible. This view type can be used for [Segmentation](#).

3D View



3D view displays segmented objects as 3D meshes. This is primary view for [Reduction](#).

X-Ray View



X-Ray view displays X-Ray simulation based on 3D mesh objects. X Ray simulation does not give physically accurate image as it is based on following assumptions:

- All objects are of homogeneous material. Attenuation depends only on thickness.
- Visualization is based on 3D mesh objects. It does not include data that is present in the original dataset, but has not been captured by segmentation. Cracks that have not been captured in the process of segmentation will not be visible.

Cutaway View



Cutaway view display section through the 3D model following the screw axis.

A screw has to be selected for this view to work.

CAD View



CAD view shows fixation plate from different sides in orthographic projection. This view can be used as a reference for bending the plate.

A fixation plate has to be selected for this view to work.

Lock Display Scale to 1:1

By selecting this option fixation plate is displayed on screen in real size.

Operating system does not provide accurate information on display device physical size. To get scaling to work correctly display has to be calibrated. Calibration is done in options:

Edit|Options|Display|Calibration by entering pixel vertical and horizontal size. In case this information is not available physical display device width or resolution can be specified to calculate the pixels size.

File

New	Create a new document. Dialog will be displayed to select dataset files location.
Open	Load existing EBS document. EBS documents have .ebs extension.
Save	Save document under existing name.
Save	Save document under a different name.
Export	Export 3D mesh objects into COLLADA file. All visible screws, fixation plates and labels with 3D mesh representation are exported. The unit of exported scene is millimeter.
DICOM Files Show Info	Show status of dataset file with source location of dataset files.
DICOM Files Set Dataset Path	Set location of the dataset files. Available only in cases when the dataset path specified in document is invalid.
DICOM Files Copy Dataset Files	Copy dataset files referenced in the document to arbitrary folder.
DICOM Files Move Dataset Files	Move dataset files referenced in the document to arbitrary folder.
Show Metadata	Display DICOM metadata defined in currently loaded dataset. DICOM metadata contain information about the patient and examination details.
Exit	Exit the application.

File

Undo	Undo command.
Redo	Redo undone command.
Clear Undo Buffer	This command will release memory used by undo steps. It will also revert filtered dataset to initial state. This command can not be undone. Due to large size of data EBS might sometime not be able to perform operation for the lack of memory. To release unused memory use <i>Clear Undo Buffer</i> and try to execute operation again.
Options	Display options dialog .

File

Layout	Submenu item selects one of the available view layouts .
Pane Contents	Submenu item selects one of the available view types for the selected view pane.
Build 3D objects	Update 3D mesh object for all the labels that have been modified since the mesh was last build.
Rebuild 3D objects	Rebuild 3D mesh objects for all the labels.

File

Contents	Display help contents.
Activation	Activate EBS by sending serial number to the EBS activation service. To access full feature set EBS has to be activated.
About	Display application information.

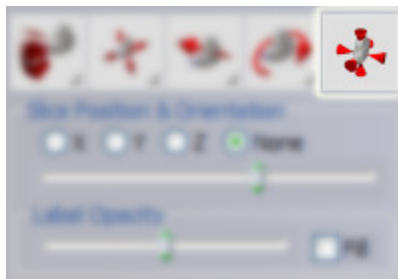
USER INTERACTION

EBS makes a distinction between three types of user interaction modes.

In all of the three cases is expected that objects to act upon, in case operation expects some objects as an input that is, are already selected before action is triggered.

Command

Command is executed as soon as button is clicked or menu item selected.



Command button for view-point reset.

Tool

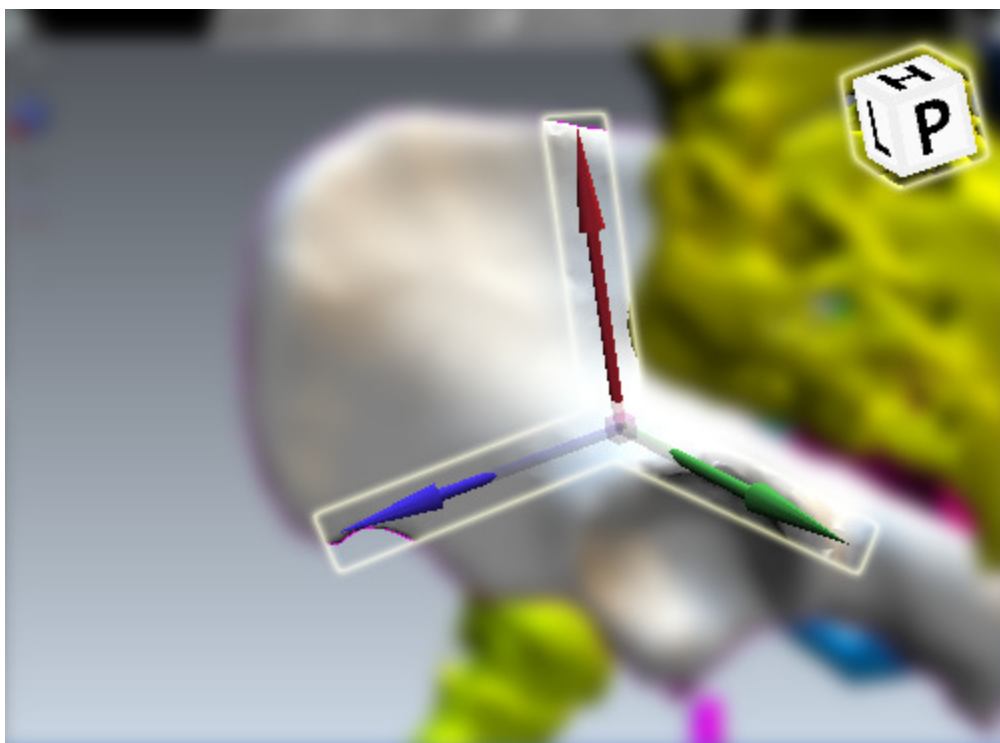
Tool is state of the input and operations are executed only when mouse is clicked or dragged in one of the views. Each tool supports only certain view types. Tool buttons are denoted by triangle icon in bottom right hand corner. Only one tool can be active at any time.



Tool button for view panning; note the triangle.

Widget

Widget is a visual element that is drawn inside view and can be manipulated by clicking or dragging on its handle. As a general rule when both tool is active and widget is present widget has a priority i.e. when mouse is clicked on the widget handle widget will accept the action.



Translate object and viewpoint orientation widgets inside 3D view.

OPTIONS DIALOG

Use options dialog to set application preferences.

TASKS

EBS workflow comprises of following steps:

- Importing examination and creation of 3D mesh model: [Segmentation](#)
- Reduction and fixation using 3D mesh model: [Reduction](#)
- Analysis of the model: [Analysis](#)

SEGMENTATION

Segmentation is a process of building 3D mesh model from examination in form of volumetric image - stack of image slices. Steps of segmentation are outlined below.

IMPORTING EXAMINATION

A first step is to import examination data stored in DICOM format. Examination is loaded by selecting *File|New...* menu and pointing to folder with examination. With option "Include Sub-Folders" all sub-folders of selected folder will be scanned for images. In case there is more than one dataset found in specified folder selection dialog box will appear prompting to select one of the available datasets.

Once dataset is loaded it can be viewed in dataset views.

DICOM metadata such as more detailed patient info and scanning parameters are available through the menu *File|Show Metadata...*

Menu *File|DICOM Files|Show Info...* displays short info about the state of dataset and where the images were loaded from. This might be useful moving .ebs documents to a different location.

Location of DICOM files is stored in .ebs document as a relative path reference. When document is saved to different device or media user must take care that DICOM files which document references are moved too. To modify the path to DICOM files *File|DICOM Files|Set Dataset Path...* can be used.

There are two utility commands to copy or move referenced DICOM files to user specified folder under *File|DICOM Files*.

FILTERING DATASET

Based on scanning protocol used, data might contain too much noise to proceed with segmentation. By filtering dataset high frequency noise is removed. More the data is smoothed, easier will it be to process further, but possibly important details might be lost.

Filter dialog is shown by clicking the *Filter Dataset* button. There are three smoothing filters available:

- Recursive Gaussian

- Gradient Anisotropic Diffusion
- Curvature Anisotropic Diffusion

Please consult ITK documentation about filter details.

REGION OF INTEREST (ROI)

Processing time increases with dataset size. In case only part of dataset contains structures of interest it is possible to ignore irrelevant parts by defining sub region of the dataset where on which filtering is performed - ROI. ROI is used in Segmentation and some other filters.

SEGMENTATION

Segmentation tags parts of dataset image which contain tissue of interest. Bone extraction is done with value thresholding followed by optional post processing. Segmentation tool is activated with *Segment Tool* button.

With segmentation parts of dataset are selected which contain image. Simple thresholding is used to define areas. There are also three options for object post processing.

FURTHER PROCESSING

Before reconstruction can start bone fragments have to be separated so they can be manipulated independently. Full set of functions available for that purpose is in [Segmentation Toolbox](#).

REDUCTION

Reduction is done by moving the bone fragments and adding implants in form of fixation plates and screws.

The tools for reduction are available in [Reduction Toolbox](#).

ANALYSIS

Analysis is not available yet.