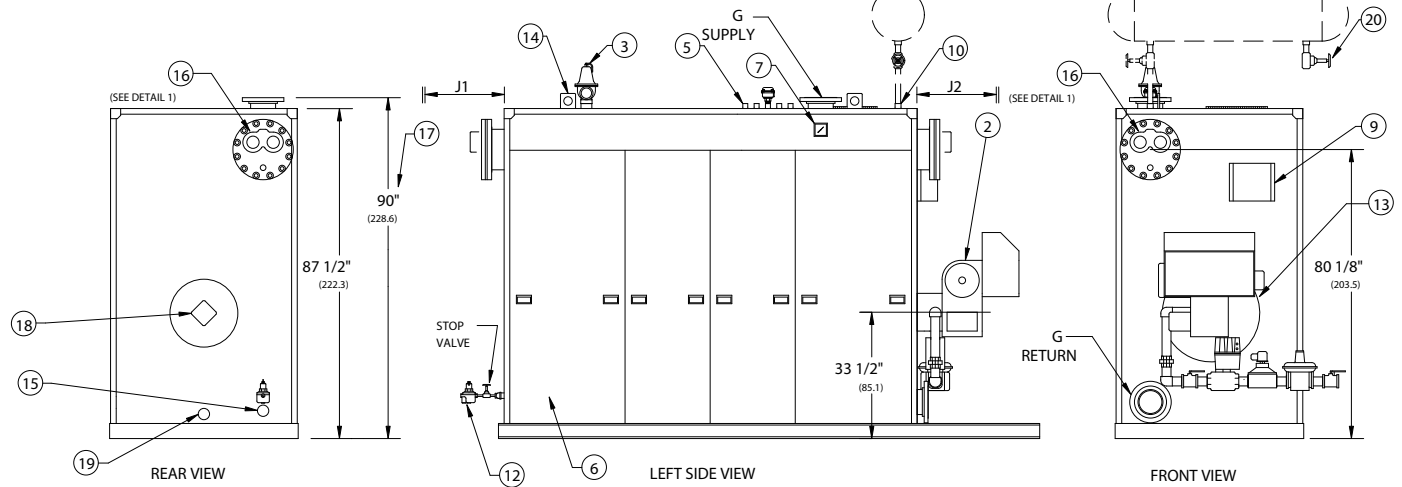
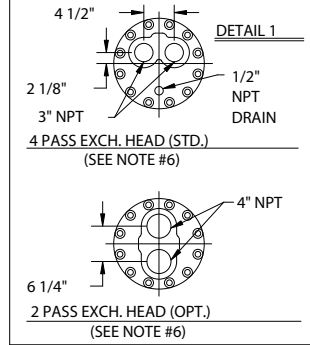
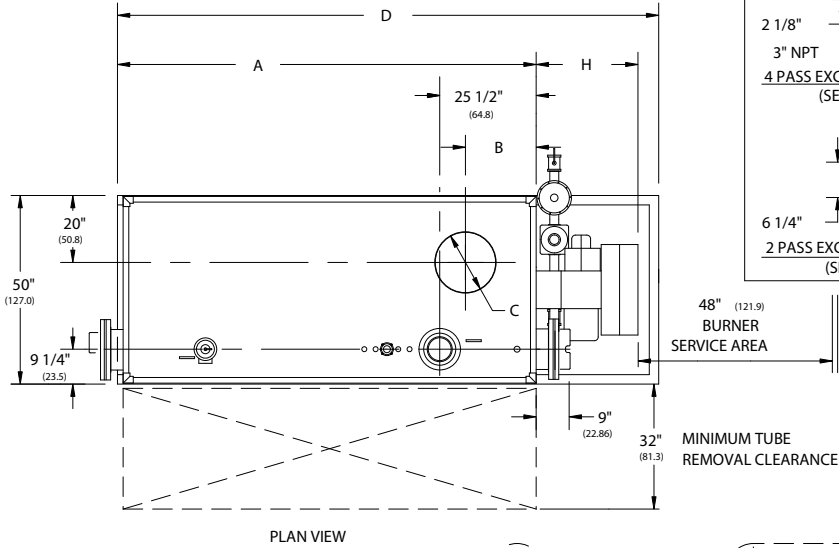


RV SERIES FORCED DRAFT INDIRECT
WATER HEATERS (RV500 - RV800)

EFFECTIVE DATE: 7/24/03
REPLACES: 4/18/01

NOTES:

1. ALL DIMENSIONS ARE IN INCHES. THOSE IN PARENTHESES ARE CENTIMETERS.
2. LOCATION DIMENSIONS ARE ALL ±1/2".
3. GAS TRAIN, CONTROL AND BURNER CONFIGURATION WILL VARY DEPENDING ON JOB SPECIFICATIONS & CONDITIONS.
4. DIMENSIONS ARE SUBJECT TO CHANGE WITHOUT NOTICE. CONSULT FACTORY FOR CERTIFIED DIMENSIONS.
5. ALL FLANGES ARE 150# UNLESS OTHERWISE NOTED.
6. SEE FORMS 1594 AND 1595 FOR FLOW RATES AND PRESS. DROPS OF 2 AND 4 PASS HEAT EXCHANGERS.



1. PROBE TYPE L.W.C.O.-
2. FORCED DRAFT BURNER
3. RELIEF VALVE
4. EXPANSION TANK (LOOSE)
5. CONTROL TAPPINGS 3/4" NPT

6. JACKET ACCESS PANELS
7. PRESS./TEMP. GAUGE
8. CLNOUT./INSP. OPNG.-1 1/2"NPT
9. ELEC. ENCLOSURE-
10. VENT/EXP. TANK CONN. 1" NPT

12. FILL VALVE
13. OIL PUMP LOCATION
14. LIFTING LUGS
15. DRAIN CONNECTION 2" NPT

16. INDIRECT HEAT EXCHANGER
17. HEIGHT OVER SUPPLY
18. FLAME OBSERVATION PORT
19. COMB. CHAMBER DRAIN 1" NPT
20. DRAIN VALVE (BY OTHERS)

BOILER MODEL	RV500WT	RV550WT	RV600WT	RV700WT	RV800WT
A-LENGTH OVER JACKET	130 1/4" (330.8)	143 1/4" (363.9)	152 3/4" (388.0)	175 1/4" (445.1)	197 3/4" (502.3)
B-FLUE LOCATION	18 3/4" (47.6)	18 3/4" (47.6)	18 3/4" (47.6)	20 3/4" (52.7)	20 3/4" (52.7)
C-FLUE DIAMETER	16" (40.6)	16" (40.6)	16" (40.6)	20" (50.8)	20" (50.8)
D-LENGTH OVER BASE	163" (414.0)	175 3/4" (446.4)	185 1/4" (470.5)	214 1/2" (544.8)	237 1/4" (602.6)
G-SUPPLY / RETURN NOZZLE SIZE	6" FLG (152)	6" FLG (152)	6" FLG (152)	6" FLG (152)	6" FLG (15.2)
H-BURNER EXTENSION	CONSULT FACTORY FOR BURNER EXTENSION APPLICATIONS				
J1-HT. EXCH. REMOVAL CLR.	75" (1905)	75" (1905)	88" (223.5)	101" (256.5)	101" (256.5)
J2-HT. EXCH. REMOVAL CLR.	75" (1905)	88" (223.5)	88" (223.5)	101" (256.5)	114" (289.6)



783 NORTH CHILI AVE
PERU, INDIANA 46970

ORDER NO.:
ORDER REV. NO.:
FORM NO.: 1770

RV SERIES FORCED DRAFT INDIRECT WATER HEATERS

BOILER MODEL		RV500	RV550	RV600	RV700	RV800
INPUT	MBH	5,000	5,500	6,000	7,000	8,000
	(KW)	1,465.0	1,611.5	1,758.0	2,051.0	2,344.0
OUTPUT*	MBH	4,000	4,400	4,800	5,600	6,400
	(KW)	1,172.0	1,289.2	1,406.4	1,640.8	1,875.2
BOILER HORSEPOWER	HP	119	131	143	167	191
	(KW)	1,171.0	1,288.1	1,405.2	1,639.4	1,873.6
TUBE DIAMETER	INCHES	1.50	1.50	1.50	1.50	1.50
	(CM)	3.81	3.81	3.81	3.81	3.81
NUMBER OF TUBES		67	75	81	95	109
PRESSURE VESSEL						
VOLUME	GAL	200	216	236	278	309
	(L)	757.0	817.6	893.3	1,052.2	1,169.6
HEATING SURFACE	SQ FT	597	668	722	847	973
	(SQ M)	55.5	62.1	67.1	78.7	90.4
INDIRECT HEAT EXCHANGER						
HEAT EXCHANGER #1	INCHES	66	79	79	92	92
	UTF2-68-(#) OR UTF4-64-(#) (CM)	167.6	200.7	200.7	233.7	233.7
HEAT EXCHANGER #2	INCHES	66	66	79	92	105
	UTF2-68-(#) OR UTF4-64-(#) (CM)	167.6	167.6	200.7	233.7	266.7
OPERATING WEIGHT	LBS	11,167	12,151	13,138	15,028	16,811
	(KG)	5,065.5	5,511.6	5,959.2	6,816.6	7,625.5
SHIPPING WEIGHT	LBS	9,500	10,350	11,170	12,710	14,235
	(KG)	4,309.2	4,694.8	5,066.7	5,765.3	6,457.0
RELIEF VALVE TYPICAL - 30 PSIG (206.8 KPA)						
QUANTITY		(2) 740	(2) 740	(2) 740	(2) 740	(2) 740
SIZE	INCHES	2 x 2½	2 x 2½	2 x 2½	2 x 2½	2 x 2½
	(CM)	5.08 x 6.35	5.08 x 6.35	5.08 x 6.35	5.08 x 6.35	5.08 x 6.35
CAPACITY-TOTAL	MBH	10,500	10,500	10,500	10,500	10,500
	(KW)	3,076.5	3,076.5	3,076.5	3,076.5	3,076.5
RELIEF VALVE TYPICAL - 125 PSIG (861.8 KPA)						
QUANTITY		(1) 174A	(2) 174A	(2) 174A	(2) 174A	(2) 174A
SIZE	INCHES	1½ x 1½	1¼ x 1¼	1¼ x 1¼	1¼ x 1¼	1¼ x 1¼
	(CM)	3.81 x 3.81	3.17 x 3.17	3.17 x 3.17	3.17 x 3.17	3.17 x 3.17
CAPACITY-TOTAL	MBH	6,460	10,740	10,740	10,740	10,740
	(KW)	1,892.8	3,146.8	3,146.8	3,146.8	3,146.8

* Output based on nominal 80% of input. Actual combustion efficiencies will vary and are fuel dependant.
 (#) - - Indicates length of exchanger.