



**World's largest selling  
water purifier<sup>#</sup>**

<sup>#</sup>Based on Unit shipment sales for 2012. Excludes pitchers and faucet mount systems sales and includes only in-home point-of-use drinking water treatment systems.

*Welcome to the Pureit Family*



**instructions manual**





# WELCOME TO THE PUREIT FAMILY

---

## **Congratulations!**

We thank you for the trust you have shown in our product and we assure you that our product will live up to your expectations.

Millions of users trust Pureit to provide safe water to their loved ones.

Our product is developed by experts and it is designed to give you water that is completely protected from disease-causing germs. Pureit meets some of the toughest standards of leading global institutions in the world.

If you need to get in touch with us for anything, please call us at Pureit Helpline 1860-210-1000.

We once again thank you for buying Pureit Marvella UV + Cold and we look forward to a long and fruitful association with you.

## SAFETY INSTRUCTIONS

01. Please read this user manual carefully before installation and usage.
02. If you want to buy any fittings or parts, please contact the Pureit Helpline.
03. Switch off the power and turn off water supply, if you find any problem contact the Pureit service hotline, seeking for professional technician's check and recommended maintenance service.
04. The recommended input water is municipal water for this product and the water pressure range is 5–30 psi, with an environment temperature range of 10 °C– 40 °C. Do not exceed the stipulated range.
05. This product should be installed in-house. Ensure that the point of installation is not more than 1.5 metres away from the floor, drain to avoid any water spillage from spreading into the house.
06. Make sure that the installation place is far away from fire or any other heating source like gas burner, microwave oven, water heater etc.
07. Remember to always turn off the output dispenser to avoid any water spillage.
08. Please only use Germkill Kit™ and spare parts from Hindustan Unilever Pureit to ensure that you get 'As Safe As Boiled Water™' always.
09. If you find any unpleasant taste/smell while drinking water from Pureit Marvella UV + Cold, turn off the Ball Valve and empty the storage tank completely. After emptying the tank completely switch off the power supply. If the problem persists then call the service technician or Pureit Helpline for further assistance.
10. Discard the first 5 litres of purified water after installation or whenever Germkill Kit™ is replaced, before you start consuming the water.
11. There should be a minimum space of atleast 6 inches between Fan Grill and corresponding side wall to ensure proper performance.
12. Purifier should always be placed in an open environment to ensure proper air circulation and performance.
13. Dispenser when switched on will automatically get switched off after one minute to avoid any accidental spillage.
14. Turn off the side Switch when cold water is not required.
15. During normal operation of the purifier, a light humming sound of the fan will be heard which is normal.

## CONTENTS

01. Unique Features of Pureit Marvella UV + Cold .....	04
02. Know your Pureit Marvella UV + Cold .....	05
03. Water Flow Diagram and Electrical Flow Diagram.....	07
04. Important Usage Instructions for Installation .....	08
05. Important Usage Instructions and Precautions.....	09
06. Pureit Marvella UV + Cold – Unique Intelligent Indicator.....	12
07. Ordering of Germkill Kit™.....	12
08. General Do's and Don'ts .....	13
09. FAQs.....	14
10. Troubleshooting .....	15
11. Pureit Marvella UV + Cold Warranty Details .....	16

## UNIQUE FEATURES OF PUREIT MARVELLA UV + COLD

We at Pureit always believe in innovative products and Pureit Marvella UV + Cold is designed to give you the highest level of safety with maximum convenience.



### Dual Option of Natural and Cold Water

Depending on your requirement you can get both cold and natural temperature water.



### Power Cool Technology

It's advanced Power Cool Technology turns natural water to cold water.



### High Intensity UV Lamp

Powerful 11 W UV lamp for enhanced safety.



### Advance Alert System

Warns you 15 days\* in advance when your purifier will stop working.



### Feather Touch Buttons

Pureit Marvella UV + Cold is equipped with Feather Touch buttons for easy dispensing.



### Auto Shut Off

Stops water flow when UV lamp or any other critical component is not working.



### Compact and Modern Design

This compact purifier fits easily in your modern kitchen.



### Convenient Storage Capacity

Pureit Marvella UV + Cold can store up to 2.3 liters of water automatically.



### No AMC

Lower cost of maintenance.



### Fully Automatic

Works without any intervention. The system senses if the water tank is not full, purifies and stores water automatically.



### USEPA Standards on Purification

Meets stringent criteria of Environmental Protection Agency, EPA (USA) in removal of harmful virus and bacteria.

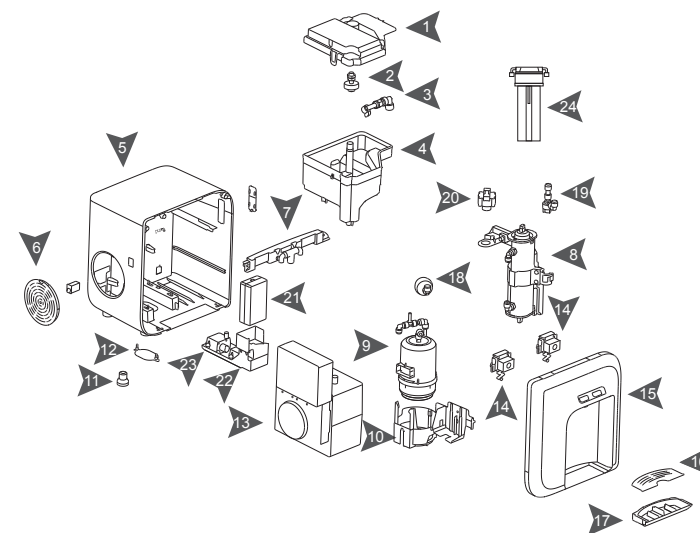


### Advanced Voltage Fluctuation Guard

Protects your purifier from sudden voltage fluctuation ranging between 90 to 270 Volts.

\*Based on water consumption of 10 liters/day

## KNOW YOUR PUREIT MARVELLA UV + COLD



- |                                  |                             |                              |
|----------------------------------|-----------------------------|------------------------------|
| 1. Tank Cover                    | 9. Carbon Filter Assembly   | 18. Sediment Plus Filter     |
| 2. Magnetic Float Switch         | 10. CCUF Clamp              | 19. Flow Restrictor Valve    |
| 3. Float Connector Body          | 11. Bulk Union Assembly     | 20. LP Switch                |
| 4. Natural Water Storage Tank    | 12. Closure Plug            | 21. UV Ballast Circuit       |
| 5. Back Panel                    | 13. Cold Water Storage Tank | 22. Pump Plate               |
| 6. Fan Grill                     | 14. POM Lock Assembly       | 23. Dispensing Pump          |
| 7. POM Lock Frame Assembly       | 15. Front Panel             | 24. External Sediment Filter |
| 8. UV Barrel + UV Clamp Assembly | 16. Drip Tray Cap           |                              |
|                                  | 17. Drip Tray Body          |                              |

## UNIQUE TECHNOLOGY MARVELLA UV + COLD

### External Sediment Filter

Removes fine and coarse particulate impurities/dirt and improves the life of the Carbon Filter.

### Activated Carbon Filter

Removes chlorine and organic impurities like harmful pesticides. It also adsorbs bad odour-causing organic compounds from water.

### Sediment Plus Filter™

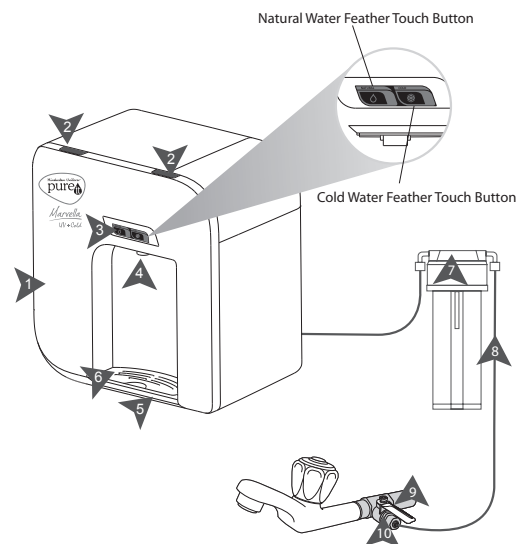
Ensures that no suspended particles enter the UV chamber.

### High Intensity UV Chamber

High intensity UV rays ensure maximum UV intensity for inactivation of bacteria, virus and parasites to deliver safe water always.

# KNOW YOUR PUREIT\*\* MARVELLA UV + COLD

1. Front Cover
2. Front Cover Lock
3. Electric Display Panel
4. Dispenser
5. Drip Tray
6. Drip Tray Cover
7. External Sediment Filter
8. Inlet Tube
9. Ball Valve Diverter
10. Ball Valve

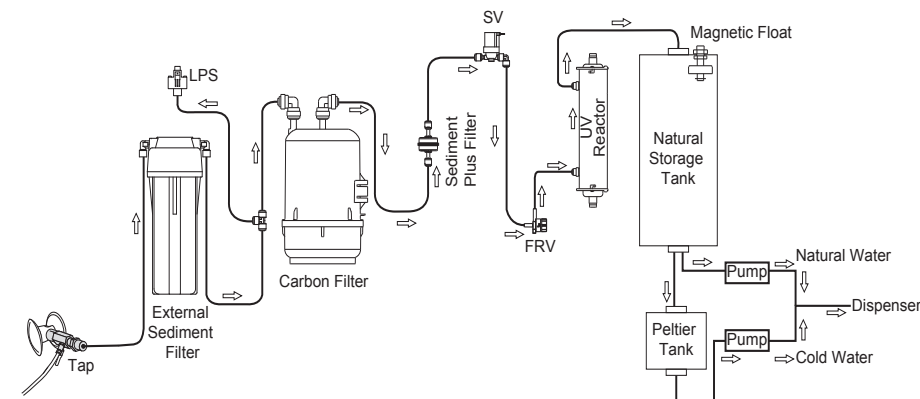


TECHNICAL SPECIFICATIONS* OF PUREIT MARVELLA UV + COLD PURIFIER	
Gross dim: Length x Width x Height	359 mm x 305.5 mm x 520 mm
Net dim: Length x Width x Height	301 mm x 254 mm x 335 mm
Net weight	Approx. 4.5 kg
Storage capacity	1.5 Litres Natural Water 0.8 Litres Cold Water
Pressure range	5 psi to 30 psi
Flow rate (Average)	Approx. 1.5 – 1.8 Litres per minute
Purification technology	UV, Activated Carbon, Sediment Filter
Material of construction for non-transparent parts	ABS, POM, PP (Food Grade Engineering Plastics)
Rated Voltage	230 Vac, 50 Hz
Rated Power	95 W

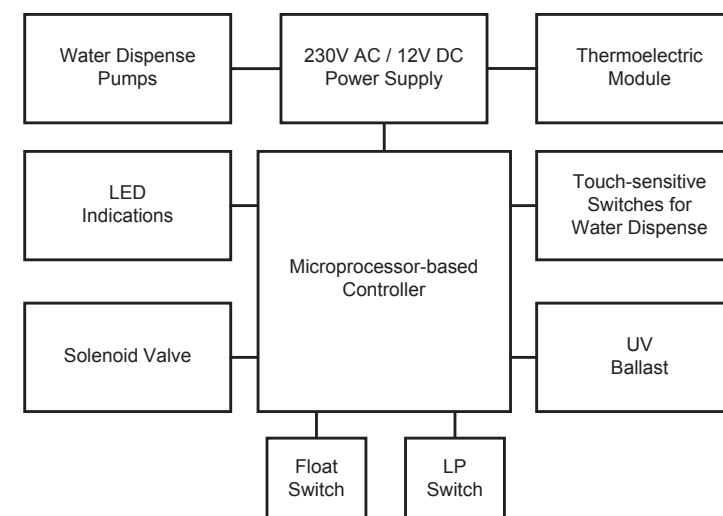
\*All technical specification related to purification capacity / life / tank filling time / flow rate are based on validation data under standard test conditions, which will change with different usage conditions, input water quality, pressure and temperature.

\*\*Complete schematic representation of the device has been shown only in this image. External Sediment Filter has been left out on the remaining illustrations for the purpose of simplification.

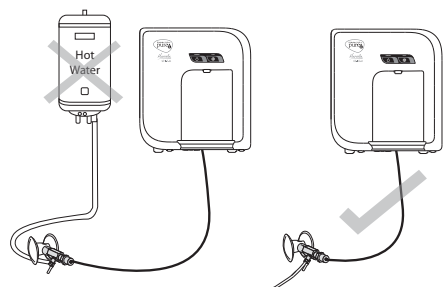
## WATER FLOW DIAGRAM



## ELECTRICAL FLOW DIAGRAM

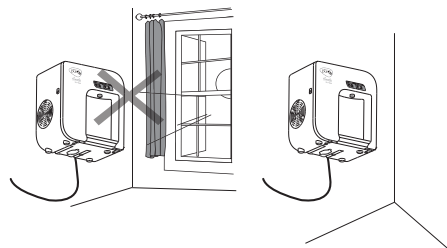
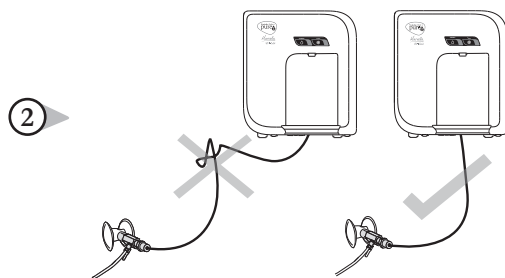


## IMPORTANT USAGE INSTRUCTIONS FOR INSTALLATION



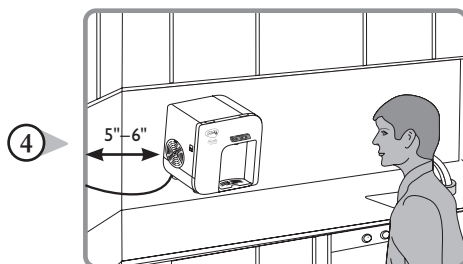
- ① Pureit Marvella UV + Cold can be installed on the wall or it can be kept on the table top. Please follow the instructions given below while installing: Ensure that input water temperature is between 10 °C to 40 °C. Do not connect the purifier to any geyser, heater etc.

Avoid sharp bends to the tube that is connected to the purifier. Please use the additional quick connector if the purifier is placed on the table.



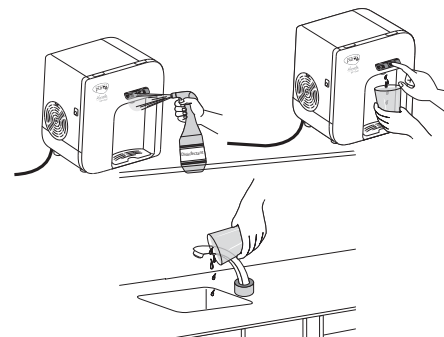
- ③ Install your Pureit Marvella UV + Cold away from direct sunlight.

There should be a minimum space of 5–6 inches between Fan Grill and corresponding side wall to ensure proper performance.



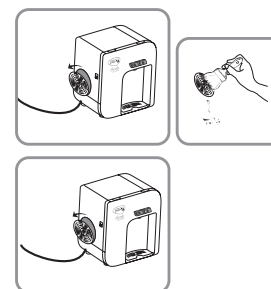
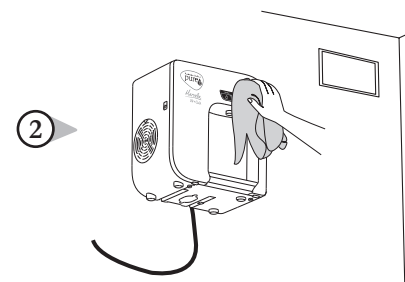
## IMPORTANT USAGE INSTRUCTIONS AND PRECAUTIONS

### Cleaning & Maintenance



- ① You can clean the dispenser by using disinfectants like bleach/hypochlorite (50 ppm available chlorine). Discard 2.5 litres of water after cleaning the dispenser.

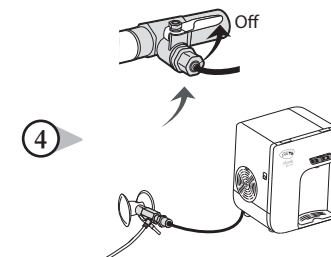
External portion of the purifier must be cleaned using wet cloth only. Do not use detergent or soap.



- ③ Fan Grill can be cleaned with brush / dry cloth. Please switch off the power and turn off the Ball Valve before removing the Fan Grill.

### Precautions

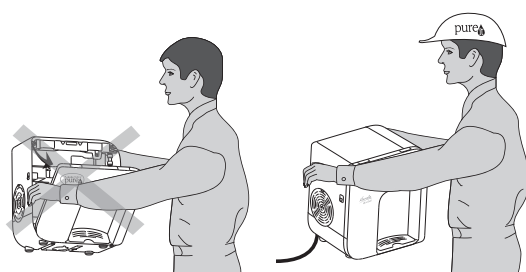
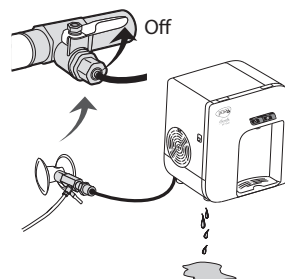
Always switch off the power supply and turn off water supply if you are not planning to use the purifier for more than two days.



# IMPORTANT USAGE INSTRUCTIONS AND PRECAUTIONS

Switch off the power and turn off water supply if you notice any leakage from the purifier and call Pureit Helpline for further assistance.

5

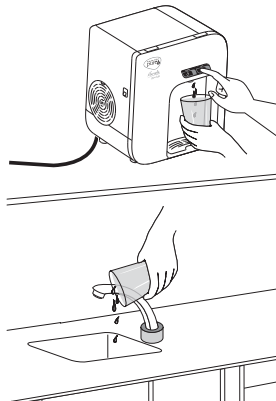


Do not try to open the purifier for cleaning the storage tank. This can be done only by a qualified company personnel or by an authorised agent.

6

Always drain 2.5 litres of water from cold button if not at home for more than 2 days.

7

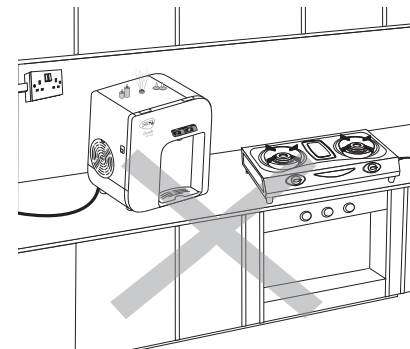


8 Once in 15 days, please drain out 2.5 litres of water from the purifier using cold button.

9 If you find any unpleasant taste/smell while drinking water from Pureit Marvella UV + Cold turn off the Ball Valve and empty the storage tank completely. After emptying the tank completely switch off the power supply. If the problem persists then call the service technician or Pureit Helpline for further assistance.



# IMPORTANT USAGE INSTRUCTIONS AND PRECAUTIONS



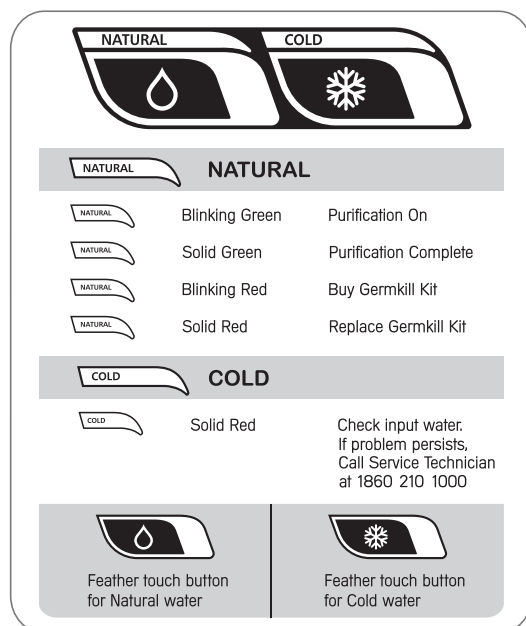
Do not light candles on the purifier. Do not keep anything on top of the purifier.

10

- 11 Do not allow any foreign material to enter into the purifier. Performance of purifier may get reduced.
- 12 Care must be taken that dust, foreign particles or water should not get in to the purifier through the Fan Grill or the air vent.
- 13 Do not plug or unplug the power cord with wet hands. Ensure that the plug isn't wet while plugging-in or plugging-out to avoid risks such as electrical shock or fire.
- 14 The space beside Fan Grill to be free to ensure proper air circulation and enhance working performance.
- 15 Fan Grill to be cleaned regularly to ensure that the vents are open. Please switch off the power and turn off the Ball Valve before removing the Fan Grill.
- 16 Discard water collected in Drip Tray regularly and maintain it dry.



## PUREIT MARVELLA UV + COLD – UNIQUE INTELLIGENT INDICATOR



## ORDERING GERMKILL KIT™

Germkill Kit™ contains Carbon Filter Assembly, External Sediment Filter, Vinegar and Muslin Cloth.

Specifications of Pureit Germkill Kit™	
Material of construction	Food safe, non-toxic, engineering plastic.
Purification capacity	This has been designed to give approximately 3000 litres of water depending upon the input water quality and water line pressure.
Germkill Kit™ performance standard	Meets the stringent international criteria of the key US Government agency, the Environmental Protection Agency (EPA), USA for Microbiologically safe drinking water.



Phone  
1860-210-1000

OR



Log in  
[www.pureitwater.com](http://www.pureitwater.com)



Please call the  
Pureit Helpline number  
**1860-210-1000**  
to find out the current cost  
of Pureit Germkill Kit™

## GENERAL DOs AND DON'Ts



- Please dispose the used consumables like External Sediment Filter and Carbon Filter Assembly along with the other household waste through the municipal disposal system.
- You should only store water in the purifier and not use other bottles and containers. In case you do store, please ensure that these bottles and containers are clean and germ-free.
- Do not use water not intended for drinking in Pureit system e.g. from abandoned or abused water bodies or water sources in which human, animal or industrial wastes are disposed or water that is excessively acidic or alkaline.
- Always empty water which has been stored in the purifier for more than 24 hours as Flora might grow over a period of time. Flora are harmless and pose no health hazard to normal healthy adults and children.
- You should ensure that the area around and beneath the purifier is kept clean at all times.
- Always rely on the Advance Alert System™ warning to change the Germkill Kit™. Auto Shut Off™ is only an additional assurance of safety.
- Freshly purified water should be used for drinking.
- Never buy Marvella UV + Cold or the Germkill Kit™ from an unauthorised source. Remember all you have to do is call Pureit Helpline number and we will deliver a new Germkill Kit™ to you at your home for a minimal delivery charge.
- Don't drop any of the components, or the purifier as a whole from a height. This may cause the components to fracture or break, and the guarantee of getting water 'As Safe As Boiled Water™' will no longer be valid.
- In case of any complaint, please call the Pureit helpline number.
- Clean the Fan Grill only after switching off the power.
- Never place the purifier in an enclosed cabinet.

### Disposal guidelines for electronic waste:

To prevent possible harm to the environment or human health from uncontrolled waste disposal, please separate electrical items in this product such as power supply adaptor, control circuits, LED panel, and wirings from other types of waste and recycle them responsibly to promote sustainable use of material resources. Household users should contact either the retailer where they purchased this product, or their local government office for details of where and how they can take these items for environmentally safe recycling.

## FAQs

### How does 'Marvella UV + Cold' purify water?

Marvella UV + Cold has a 4-stage purification system which ensures you get water that is 'As Safe As Boiled Water™' that meets the stringent standards set by the USEPA for Microbiologically safe drinking water.

First, the water passes through the Sediment Filter which removes fine and coarse particulate impurities/dirt.

The second stage is the Activated Carbon that removes remaining dirt, chlorine and organic impurities like harmful pesticides. It also adsorbs colour and odour-causing organic compounds from water.

Then water passes through Sediment plus Filter which ensures no suspended particle enters UV chamber.

Then the water passes through the high intensity UV chamber which deactivates microbial contaminants like bacteria, virus and parasites.

### What is the storage capacity of 'Marvella UV + COLD'?

Marvella UV + Cold has a total storage capacity of 2.3 liters (0.8 litres of Cold water Unit and 1.5 litres of Natural water). The storage tank is fully automatic and as and when you take water out of the tank, the purification process starts automatically again and refills the storage tank provided the power is on.

### How much time it takes to purify water in 'Marvella UV + Cold'?

'Marvella UV + Cold' takes an average of 5 to 10 minutes to purify 2.3 liters of water depending upon the input water pressure, water quality and remaining life of the Germkill Kit™.

### What is an Advance Alert System™?

Marvella UV + Cold's Advance Alert System™ warns you 15 days in advance before your purifier stops working. Please refer to the LED indicator panel instructions for details.

### Does this mean that I need to change the UV lamp after every 3000 liters?

No. The UV lamp is designed to last typically for 10,000\* working hours. You need to change only the Germkill Kit™ (External Sediment Filter and Carbon Filter) after 3000\* liters of water has been purified.

### Can I change the ESF and Carbon Filter

It is not recommended that the users change the ESF and Carbon Filter Assembly (Germkill Kit™) themselves. Please call Pureit helpline when you need to replace the ESF + Carbon Filter Assembly (Germkill Kit™).

### Can I drink the first purification cycle of water from the purifier?

No, it is recommended to throw the first 5 litres of water by pressing the cold button that is filled in the storage tank when the new Marvella UV purifier is installed, and also whenever the Germkill Kit™ is replaced.

### What should I do if any part of the purifier is broken?

Please call the Pureit helpline number. Our technicians will visit your house and will guide you on the repairs required. There will be a nominal visiting charge and you would need to buy the parts required.

### Can I open and service my purifier?

It is not recommended to open and service purifier by an individual. Call Pureit helpline if you face any issue which requires servicing and opening the purifier.

### What should I do if there is a leakage from the purifier?

After emptying the tank completely switch off the power and turn off the Ball Valve if you find any leakage from the purifier and then call our Pureit helpline number and register a service request.

### How long the stored water in 'Marvella UV + Cold' can be used for drinking?

You can use stored water for 2 days. If it is not used for more than 2 days we advise you to discard 2.5 litres of that water by pressing the cold button, refill and then consume.

### How much time does it take to get cold water ready?

In 45 to 60 minutes water can get cooled down by 12 °C to 15 °C as compared to the temperature of natural water.

## TROUBLESHOOTING



### The water from the purifier tastes unusual

This might be due to one or more of the following reasons:

- The storage tank has not been cleaned for a long time.  
Please call Pureit Helpline number to get storage tank cleaned.
- The water is stored for too long in the storage tank.  
Please drain the stored water by pressing the cold button and fill fresh water.
- The ESF needs to be replaced/cleaned.  
Please replace or get them cleaned by calling the Pureit Helpline number.

### The purification is taking long time

This might be due to one or more of the following reasons:

- The Ball Valve may not be opened fully.  
Please ensure that the Ball Valve is open completely so that the water flow is not restricted.
- The input water pressure is below 5 psi.
- If the problem persists please call Pureit Helpline.

### The storage tank is not getting filled

This might be due to one or more of the following reasons:

- Check if the Ball Valve is kept open.
- Check if Natural indication is red. If yes then replace the the Germkill Kit™.
- Check if cold indication is red. If Yes, check for input water's availability then please call the service technician if the problem persists.
- Check if there is any leakage from the purifier and if there is any leakage then call the Pureit helpline number.

### Cold button is not dispensing water that is cold

- Check if cooling unit switch is on. If no then please switch on.
- Check if there is enough space for air circulation (6 inches beside the Fan Grill).
- Check that Fan Grill is not covered with dust or any other foreign materials.
- If the problem persists please call Pureit Helpline.

# PUREIT MARVELLA UV + COLD WARRANTY DETAILS

## Product Warranty

The 'Pureit Marvella UV + Cold' guarantees that you will get 'As Safe As Boiled Water™' as described in 'Pureit Marvella UV + Cold Unique Technology' section as long as the 'Pureit Marvella UV + Cold' is used in the manner specified in this manual.

01. The warranty does not cover external booster pump, pressure reducing valve which is bought as an accessory to the purifier.
02. All other components including the electrical parts will have a 12-month warranty against the manufacturing defects.

This warranty is subject to the following conditions:

The customer will notify the company in writing or by calling the help line promptly if any defects are noticed and give the company or its authorised agent adequate opportunity to inspect, test and remedy them. For this the customer may have to deposit the 'Pureit Marvella UV + Cold' if so required by the company, with the company's office/service centre/authorised dealer along with the original invoice, in the city where they are sold.

Inspection and test report of the company's office/service centre/authorised dealer will be final and binding under the warranty for determining defects, repairs/alterations required or carried out, or certifying working of the 'Pureit Marvella UV + Cold' thereafter.

The company's obligation under this warranty shall be limited to repairing or providing replacement of parts, which are found to be defective. The company or its authorised customer care centre/licensed service provider reserves the right to retain any part(s) or component(s) replaced at its discretion, in the event of a defect being noticed in the equipment during the warranty period.

The company's liability under this warranty shall in no event, and under no circumstances, exceed the price paid by the customer.

This warranty is confined to the first purchaser of the product only and is not transferable.

In the event of repairs of any part/s of the 'Pureit Marvella UV + Cold', this warranty will thereafter continue and remain in force only for the unexpired period of the warranty.

The warranty is issued at Mumbai, and courts at Mumbai shall have exclusive jurisdiction over matters covered or flowing from this warranty.

The company obligation is only for effective repairs of any defective part of the 'Pureit Marvella UV + Cold', and not for 'Pureit Marvella UV + Cold' replacement as such.

Repairs or replacements will be carried out either by the dealer from whom the purifier has been purchased or through a Company Customer Care Centre, or the Authorised Licensed service provider with whom the purifier has been registered.

For units installed beyond the municipal limits of the jurisdiction of the Authorised licensed service provider or company customer care centre, all expenses incurred in collecting the purifier(s) for part(s) thereof from the company's customer care centre or licensed service centre, as well as expenses incurred in deputing of service personnel/technicians towards conveyance and other incidentals etc. will be borne by the customer.

The warranty is void if any repair work is carried out by persons other than those of the company, or its authorised dealers.

Any part(s) of the electrical and purifier system replaced by the company at its discretion shall be with a functionally operative part.

The concerned customer care centre or licensed service provider will advise the customer whether to effect the repair at site or at the customer care centre.



# PUREIT MARVELLA UV + COLD WARRANTY DETAILS

Warranty does not cover accessories external to the equipment supplied by the dealer.

In case of repairs or replacement of any part/s of the unit, this warranty will thereafter continue and remain in force only for the unexpired period of the warranty. Replacement of parts would be purely at the discretion of HUL, the same part model shall be replaced and in the event such part model has been discontinued, it shall be replaced with the part model of price equivalent at the time of purchase.

In case of any damage to the product/customer abuse/repairs by unauthorised personnels/misuse detected by the authorised service center personnel, the warranty conditions are not applicable and repairs will be done subject to availability of parts and on a chargeable basis only.

This warranty shall not cover any consequential or resulting liability, damage or loss to property or life arising directly or indirectly out of any defect in the water purifier.

The company's obligation under this warranty shall be limited to repair or providing replacement of defective parts only under the warranty period.

The warranty is not applicable in any of the following cases:

01. The completed warranty card is not presented to authorised service personnel at the time of service of the purifier.
03. The purifier is not operated according to instructions given in the instructions manual.
04. The purifier is not installed in the proper procedure specified.
05. Any defect caused due to improper electrical circuit outside the purifier in the house or by any defective electrical supply.
06. Defects caused by improper or reckless use, which shall be determined by the company personnel.
07. Any repair work is carried out by the persons other than authorised service personnel.
08. The damages caused due to transportation or shifting is not covered by warranty.
09. The warranty will automatically terminate after 12 months period even though the purifier may not be in use for any time during the warranty period for any reason.
10. Only courts in Mumbai will have the jurisdiction for settling any claims.
11. The serial number of the purifier or any part thereof is damaged, defaced, altered, obliterated, or tampered with or removed for any reason whatsoever.
12. Defects due to causes beyond control like lightening, abnormal voltage (normal voltage range specified 230V +/- 10% with 50 Hz), acts of God or while in transit or at service center or purchaser's residence. Customer shall ensure that a stabilizer is installed in those areas where voltage is not available within the warranty range (230V +/- 10%). The stabilizer should be of any reputed manufacturer.

This warranty is valid in India only.

Notwithstanding anything to the contrary contained in, or implied by this warranty:

The company's liability under this warranty shall be limited only to defects in the 'Pureit Marvella UV + Cold' which occur under the conditions of normal operation of the 'Pureit Marvella UV + Cold' and their proper and prescribed use as per this instructions manual. This warranty does not cover or extend to defects which are determined by the company or its authorised agents as occurring or resulting from or attributable to negligence, abuse, misuse, faulty care, operation or maintenance or repairs, alterations to the 'Pureit Marvella UV + Cold' or any part thereof by others.

## General

For the purpose of this warranty, the following expressions shall have the following meanings respectively:

- 'The 'Pureit Marvella UV + Cold' shall mean the 'Pureit Marvella UV + Cold' described in the invoice
- 'The customer' shall mean the purchaser of the 'Pureit Marvella UV + Cold' from the company or the company's authorised dealer who is a party to the invoice
- 'The company' shall mean Hindustan Unilever Limited
- 'Invoice' shall mean the Invoice issued for the 'Pureit Marvella UV + Cold' by the company or its authorised dealer to the customer describing the 'Pureit Marvella UV + Cold' and indicating, inter alia, the total purchase price thereof, the name of the customer, and the place where the 'Pureit Marvella UV + Cold' is to be delivered
- 'Instructions manual' shall mean the instructions for use and maintenance contained in the leaflet published by the company, and delivered to the customer at the time of sale of the 'Pureit Marvella UV + Cold'



## Warranty Registration Card

Serial No. \_\_\_\_\_

Date of Purchase: \_\_\_\_\_

Purchaser's Name: \_\_\_\_\_

Telephone No. \_\_\_\_\_

Address: \_\_\_\_\_

\_\_\_\_\_

Dealer's Name: \_\_\_\_\_

Address: \_\_\_\_\_

\_\_\_\_\_

\_\_\_\_\_  
Dealer's Signature  
(with rubber stamp)

Note:

1. Please retain the bill of purchase.
2. Please quote Serial number, Model and Date of Purchase in all your correspondence.



DATE: 11 Feb 15	SCALE: 100%	PROCESS COLOURS: K (Black)
JOB No.: 3100_Bonita 3 (India) - Marvella UV + Cold	APPLICATION USED:	SPOT COLOURS:
CLIENT: HUL	INDESIGN PACKAGE: CS4	TOTAL COLOURS: Single
CAMPAIGN / JOB TITLE: Marvella Hot RO	QUARK PACKAGE:	COPY WRITER SIGN OFF: HUL
FILE NAME / VER: 3100_Bonita 3 (India) - Marvella UV + Cold_V11	ILLUSTRATOR:	CLIENT SIGN OFF: Deepa G.Patil
ACCOUNT SERVICE:	COREL DRAW PACKAGE:	QC SIGN OFF:
<p><b>IMPORTANT NOTE:</b> WHILE EVERY EFFORT HAS BEEN TAKEN TO PRODUCE ERROR-FREE ARTWORKS BY STRICTLY ADHERING TO CLIENTS INSTRUCTIONS, BASIL'S LIABILITY IS LIMITED TO RE-SUPPLY OF REVISED ARTWORKS IN THE EVENT OF ANY ERROR. BASIL WILL NOT BE LIABLE OR HELD RESPONSIBLE FOR ANY MONETARY LOSSES OF THE SUPPLIER/PRINTER OR CLIENT DUE TO THE PRINT-RUNS FROM THE ARTWORKS SUPPLIED BY BASIL. CLIENTS ARE REQUESTED TO CHECK THE ARTWORKS THOROUGHLY BEFORE ACTIONING PUBLICITY/PRINT RUNS.</p>		
<p><b>Basil Communications (P) Limited</b> 503/34, 2nd Floor, 46th Cross, 9th Main, 5th Block, Jayanagar, Bangalore 560 041 T +91 80 4026 0800. <a href="http://www.basilglobal.com">www.basilglobal.com</a></p>		

basil

an ISO 9001:2008 certified company