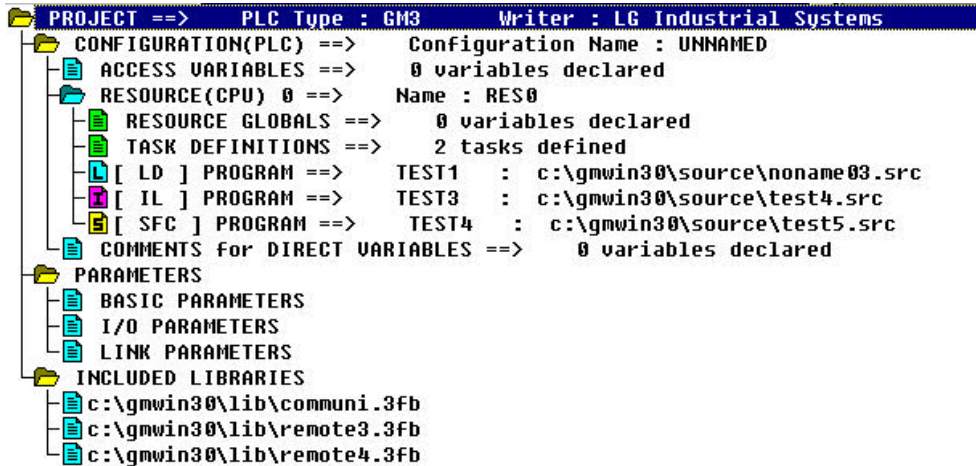


## Chapter4 Edit a Project




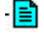
Project is a basic element of GLOFA PLC. Basically, one project can be created for each PLC system. Project consists of Configuration part, Parameter part and Included Library files. Configuration part is software part such as Global variables, Access variables, Resource contents and etc.. Parameter part is a hardware part such as basic parameters, I/O parameters, link parameters and etc. And Library files can be added or deleted in Included Library Files part.



Items	Descriptions
Project	Define all the PLC systems
<b>Configuration</b>	Set definition about PLC program
<i>Configuration Global Variable</i>	Variable which can be used in the configuration
<i>Access Variable</i>	Accessible variable list from other Configurations
<i>Resource</i>	CPU module
Resource Global Variable	Variable which can be used in all resources within a project
Task Definition	Definition of program executive conditions
Program Definition	Definition of each program and it's executive conditions
<i>Direct Variable Comment</i>	Comment list using in direct variable
<b>Parameter</b>	Defined content for the hardware in PLC system
<i>Basic Parameter</i>	Definition of basic hardware parameter
<i>I/O Parameter</i>	Described content on input/output module
<i>High Speed Link Parameter</i>	Described content on high speed link parameters
<i>Redundancy Parameter</i>	Described content on input/output circuit and fault mask (for GMR only)
<i>Communication Parameter</i>	Described content on communication (for GM7 only)
<b>Included library files</b>	File list for currently used libraries

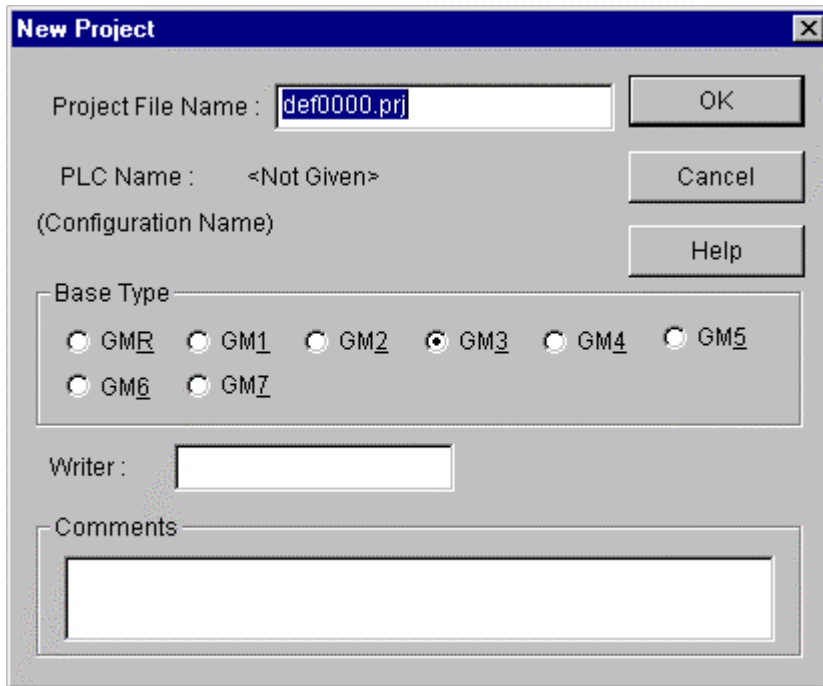
**Reference: How to use folder**

You can use the tree list to see briefly or detail tree list by clicking a mouse or pressing the right/left arrow key.

-  : Opened folder. If you click this folder, it changes into closed folder and lower branch is disappeared.
-  : Folder that can be opened. If you click this folder, it changes into opened folder and lower branch is appeared
-  : Unable to open folder (it describes an item).
-  : This folder means each item.

### 4.1. Create a Project

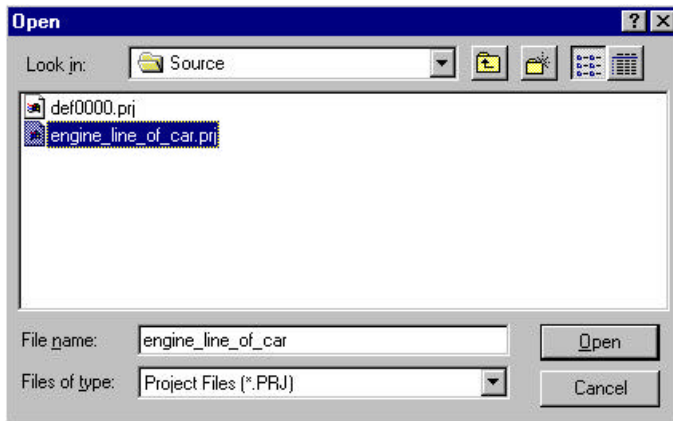
Select *Project - New Project* (  ).



- Enter the Project File Name.
- Select **Base Type** option radio button.
- Input the writer name in the **Writer** text box.
- Input the comment in the **Comments** text box.
- Click **OK** button. Then **Define Program** dialog box appears.
- ( Refer to the section 5.1 for more information of **Define Program** dialog box )


## 4.2. Open a Project

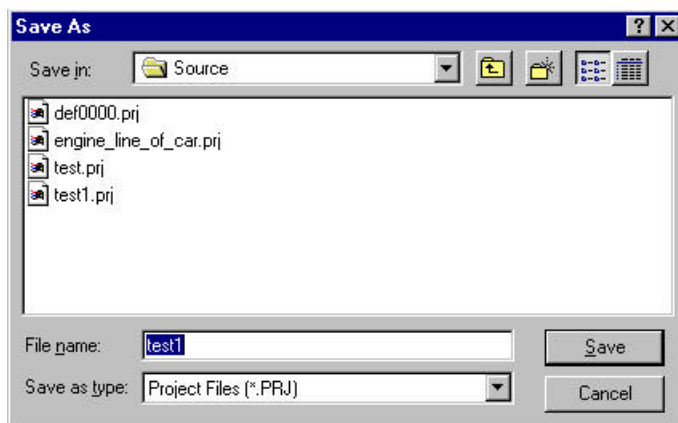
Select **Project - Open...** (  ).



Select a desired project and click **Open** button.

## 4.3. Save a Project

Select **Project - Save** (  ). If you save already existing project file, no message will be displayed. If you save a new file or save by selecting **Project - Save As...**, a dialog box will be displayed as below.




Enter the file name that you want to save and click **Save** button.

## 4.4. Edit Configuration

To edit configuration, double-click on the each list of tree list or select *Project - Edit Project Item*.

### 4.4.1. Edit a Project

 **PROJECT ==> PLC Type : GM3**

Select *Project* in the lists of Project window( or double-click Project in the Project window )

Select *Project - Edit Project Item* in the pull-down menu.

Edit the project with the same way used in section 4.1.

Click *OK* button.

#### Note

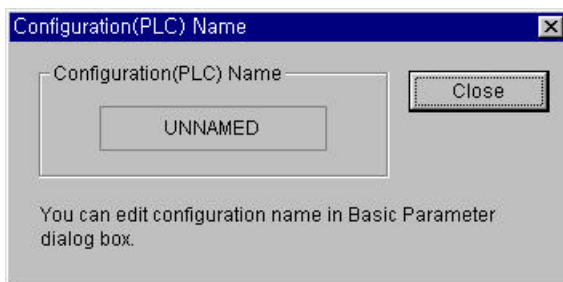
If you change PLC type, you must reload library (besides standard library) selectively.  
(Refer to detail comment in "10.2 load Library ")

### 4.4.2. Edit Configuration Item



 **CONFIGURATION(PLC) ==> Configuration Name : UNNAMED**

The *Configuration Item* in Project window shows the name of configuration that you selected.

Configuration name can be edited in *Basic Parameters* (refer to the section 4.5.1).



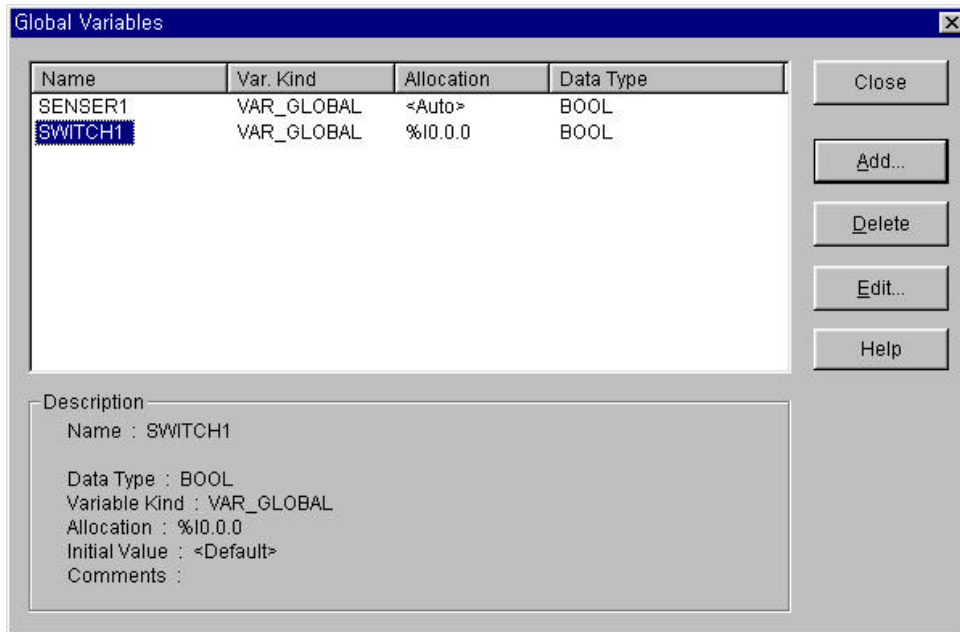
### 4.4.3. Edit a Configuration Global Variable

 **CONFIGURATION(PLC) ==> Configuration Name : UNNAMED**  
 **CONFIGURATION GLOBALS ==> 0 variables declared**

Configuration Global Variable can be used commonly for all programs in several resources.  
So, it can be used only in GM1 that several resources can exist in.

Select **Configuration Globals** in the Project window list.

Select **Project - Edit Project Item**(or double-click the Configuration Globals in the Project window).

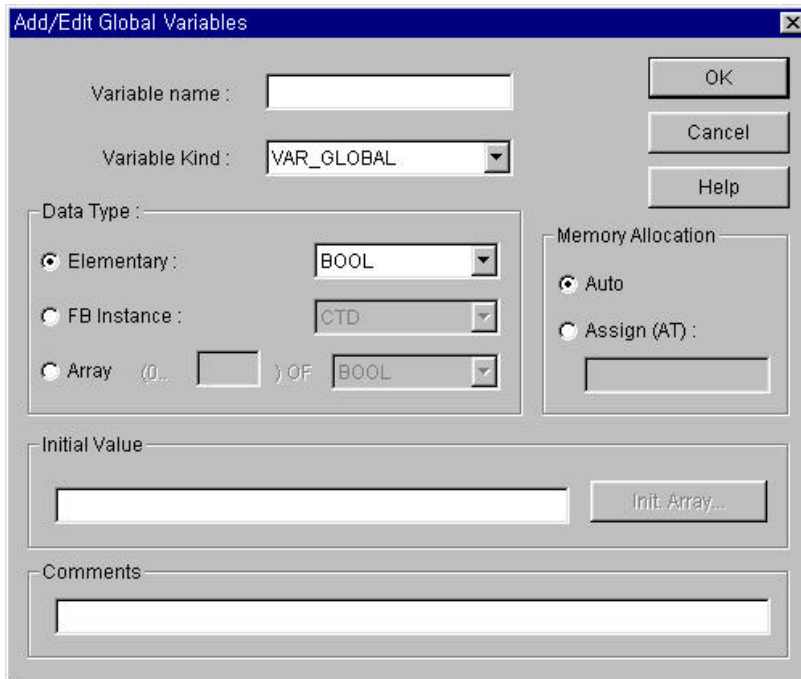


Description item in the above dialog box shows the content of the selected global variable in detail.

1) Add a Configuration Global variable

Click the **Add...** button in the above dialog box.

Enter the Variable name in the **Add/Edit Global Variables** text box.



Select Variable type in the **Variable Kind** list box.

Select Data Type for Variable at list box or option radio button.

Select Memory Allocation for Variable by option radio button in **Memory Allocation**.

If you want to set an initial value, type it in the **Initial Value** text box.

Enter the comment in the **Comments** text box.

Click **OK** button.

2) Delete Configuration of Global Variable

Select item to delete in the **Global Variable List** box .

Click **Delete** button.

3) Edit Configuration of Global Variable

Select item to edit in the **Global Variable List** box.

Click **Edit** button.

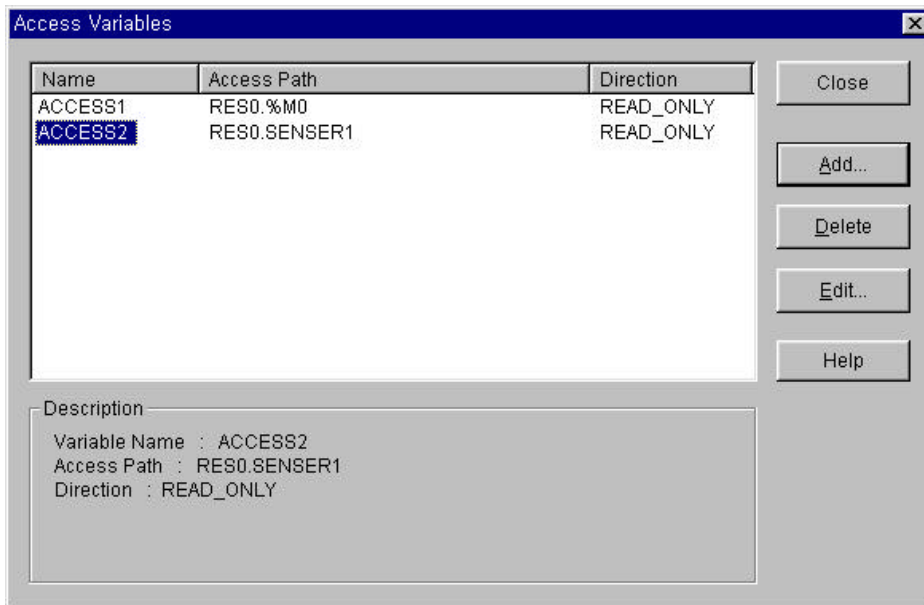
Enter the data in the same way to insert.

### 4.4.4. Edit Access Variable

An access variable is used to protect the data besides declared as access variable, when other PLC(i.e. other configuration) read or write to it's own PLC, it allows you to constrain read/write access authority.

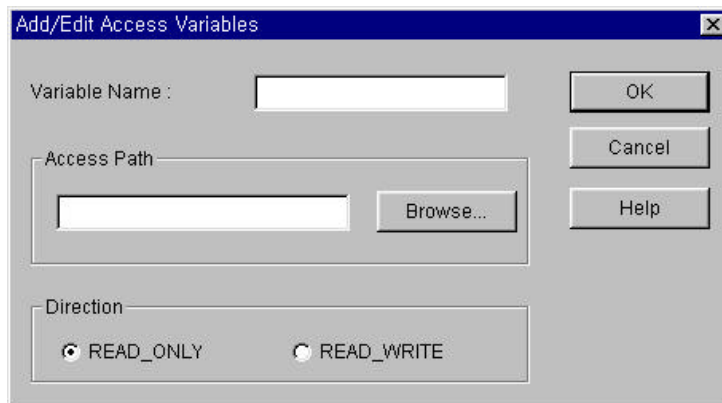
Select **Access Variable** at the list in Project window.

Select menu **Project - Edit Project item**(or double-click **Access Variable** in the Project window).



#### 1) Insert Access Variable

Click the **Add...** button.



Type the Variable Name in the **Access Variable Name** text box.  
The name is available only Capital Letter.

Select or enter the Access Path in the **Access Path** text box.

For example,

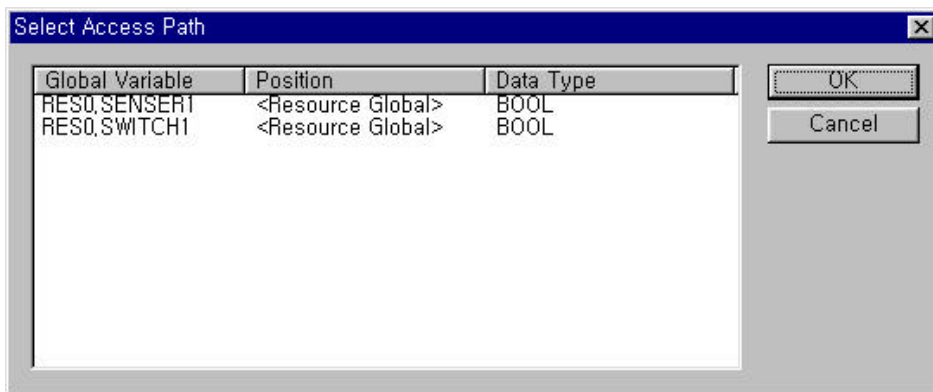
In GM1

Available Input for Access path	Example
Configuration Global Variable	A, VALVE1
Resource Global Variable	Resource Name. Global Variable name --> RES1.a
Direct Variable	Resource Name. Direct Variable --> RES1. %10.0.0

In GM2 GM7

Available Input for Access path	Example
Resource Global Variable	Use only Global variable name ---> A
Direct Variable(excluding GM1)	Use only Direct Variable --> %10.0.0

You can also select the **Access Path** by clicking **Browse** button.



Select the **Access Authority** option button. (Choose one of the Read or Read/Write )  
Click **OK** button.

- 2) Delete Access Variable  
Select an item to delete in **Access Variable List** box.  
Click **Delete** button.
- 3) Edit Access Variable  
Select an item to edit in **Access Variable List** box.  
Click **Edit** button.  
Enter in the same way to insert access variable, and click **OK** button.

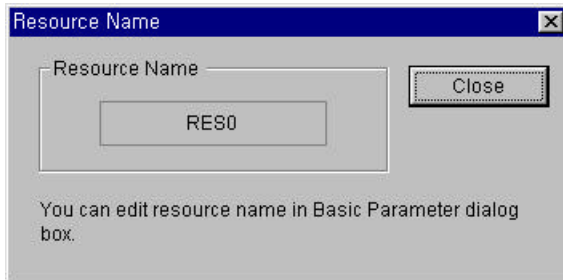


### 4.4.5. Edit Resource

Resource is a CPU for PLC. So, you can use maximum 4 resources in GM1 when you configure a multi-CPU.(for others, only one resource is available.)

#### 1) View Resource Name

You can see the Resource name defined by user at **Resource** item of the Project window. You can edit a resource name in the "**Edit Basic Parameter**".



#### 2) Add Resource (only available for GM1)

Select **Configuration** in Project window.

Select **Project - Add Project Item - Resource**.

Enter a resource name in the **Resource Name** text box.

Click **OK** button

Now, new resource is added to the Project Window and **Define Program** dialog box appears as like creating a new project.

#### 3) Delete Resource (only available for GM1)

Select Resource to delete.

Select **Project - Delete Project Item**.

### 4.4.6. Edit Resource Global Variable

Resource Global Variable can be used for the all programs in the resource.

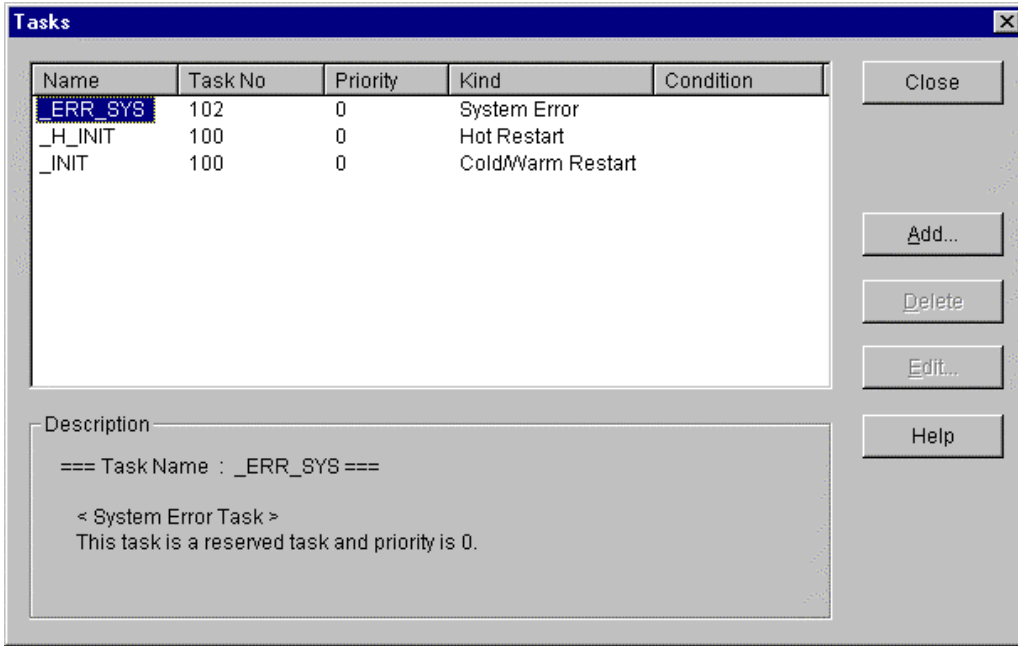
The process for editing is same as Global Variable.

### 4.4.7. Define Task

Task defines the executive condition of a program. Its types are single, Interval, interrupt and etc.

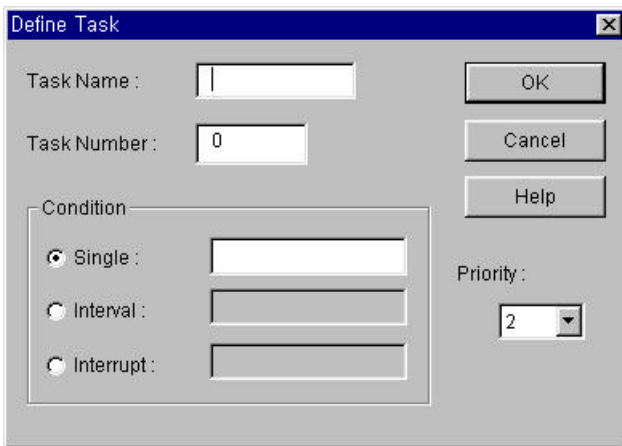
Select **Define Task** in Project window.

Select **Project - Edit Project Item**.



1) Add Task

Click the **Add...** button.



Type the task name in the **Task Name** text box.

Enter following number for the executive condition in the Task Number text box.

Executive Condition	Task Number
Interval	0 31
Interrupt	32 47 ( GM4, 5 : 32 39)
Single	48 63

In case of interrupt, interrupt number and the designated task number is fixed automatically.

The task number of GM6 and GM7 is setup automatically under the priority order.

GM6 and GM7 can have 8 tasks including Interval, Interrupt and Single.

Variable name for single, duration time for interval and input position of interrupt card for interrupt are represented as a number.

a) In case of Single

Boolean in the Resource Global Variable	A, VALVE1, etc.
Boolean in the Direct Variable	%1X0.0.0, %QX0.1.1, %MX10, etc.

b) In case of Interval

A constant for the duration time	T#10S, T#1H10M10S10MS, etc.
----------------------------------	-----------------------------

c) In case of Interrupt

Interrupt Number (GM1 3 : 0 15, GM4 7 : 0 7)	0, 1, 2 ... 15
--	----------------

Select priority in the **Priority** list box. You can select priority number from 0 to 7, and smaller number has higher priority.  
Click **OK** button.

2) Delete Task

Select an item to delete in the **Define Task** list box.  
Click **Delete** button.

3) Edit Task

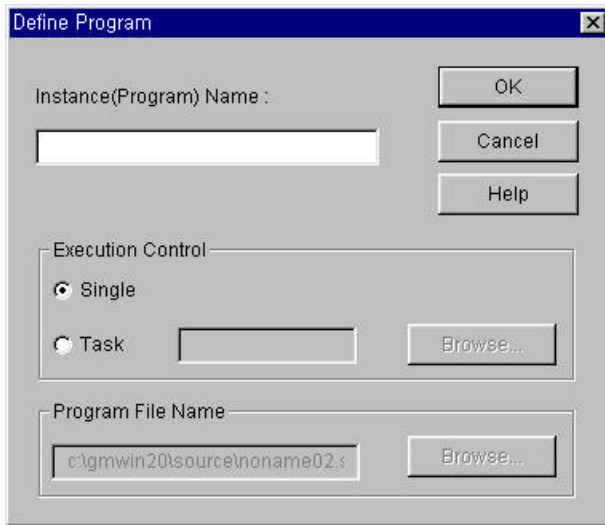
Select an item to edit in the **Define Task** list box.  
Click **Edit** button.  
Enter in the same way to add a task, and click **OK** button.

### 4.4.8. Define a Program

The defined program in this process is the real program to be executed in PLC.  
There are 2 kinds of program, one is scan program and the other is task-defined program.  
When several scan programs exist, they execute the program in the defined order.  
And the program defined as task is executed according to the condition of the task.

1) Add a Program

Select **Project - Add Project Item - Program** in the pull down menu.  
And the dialog box appears as below.



Enter the instance(Program) name in **Instance Name** text box.

Choose one between scan program(**Single**) and define task program(**Task**) in the **Execution Condition** option.

In case of task-defined program, you can enter the task name directly in the **Task** text box.

In other way, you can select one of the tasks already defined in the **Task List** dialog box by clicking Browse button, and click **OK** button.

Input the program name( .SRC) in the **Program File name** text box. If there is a program already created, click **Browse** button and select file in the **Task List** dialog box.

Click **OK** button.

Then new program is added into the Project window.

2) Delete Program

Select a program to delete.

Select **Project - Delete Project Item**.

3) Edit Program

Select **Program** in Project window.

Select **Project - Edit Project Item**.

Edit data in the same way to add a program, and click **OK** button.

4) Change Program Order

A program execution order is set as the order(from up to down) in the project tree list.

To change the order,

Select a program item at the list in project window.

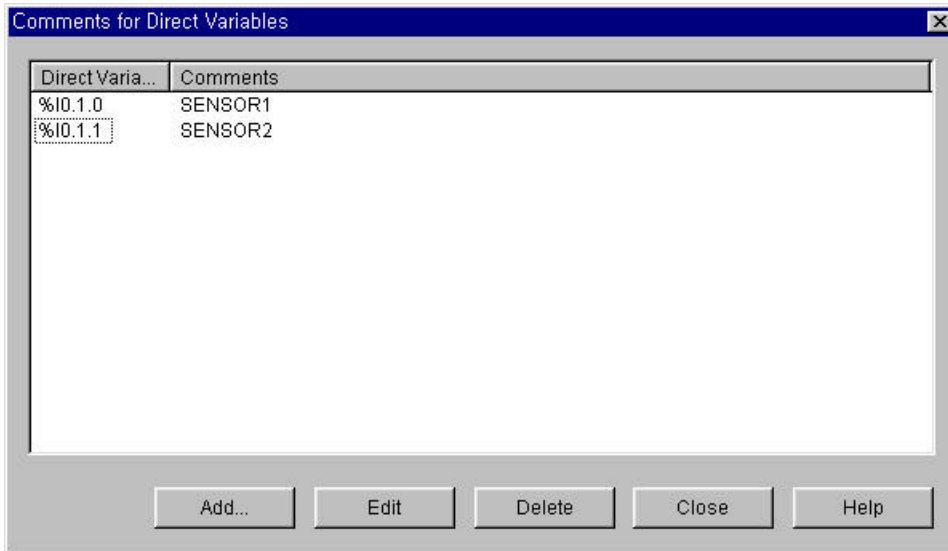
Change order step by step using **Project - UP(Program)** or **Project - Down(Program)**.

### 4.4.9. Comment of Direct Variable

Comment of Direct Variable allows you to explain on Direct Variable, and it is exactly same as content in the program comments windows.

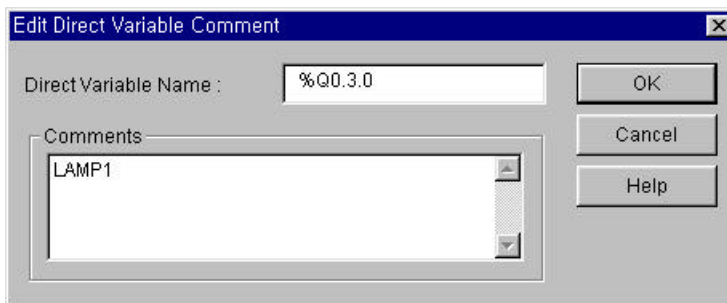
Select **Comments for Direct Variables** at the list in Project window.

Select **Project - Edit Project item** in the pull-down menu.



1) Add Direct Variable Comment

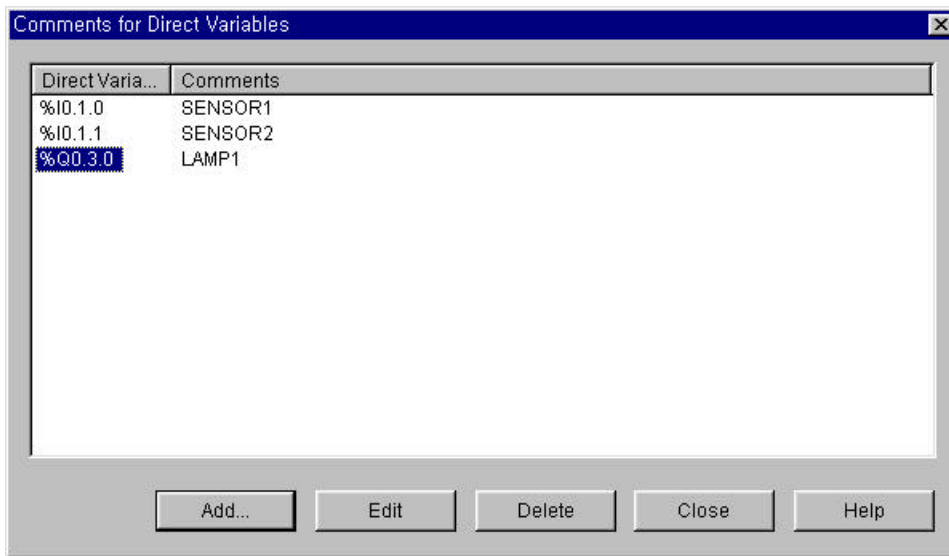
Click the **Add...** button.



Type the Direct Variable name in the **Direct Variable name** text box (%I0.3.0).

Enter the comment in the **Comment** text box.( LAMP1 ).

Click **OK** button.



- 2) Delete Comment for Direct Variables  
Select an item to delete in the *Comment for Direct Variables* list box.  
Click **Delete** button.
  
- 3) Edit the Comment for Direct Variable  
Select an item to edit in the *Comment of Direct Variable* list box.  
Click **Edit** button.  
Enter data in the same way to add a comment, and click **OK** button.

### 4.5. Edit a Parameter

Type of parameter : "Basic Parameter", "I/O Parameter" and "Link Parameter".

#### 4.5.1. Edit Basic Parameter

To set Basic Parameter,

Double-click on the "*Parameters - Basic Parameters*" in Project window, or move a cursor to "*Parameters - Basic Parameters*" and Select "*Project - Edit Project Item*".

The screenshot shows the 'Basic Parameter' dialog box for GM2 and GM5 PLC types. The dialog has a title bar with a close button. It contains the following fields and options:

- Configuration(PLC) Name: UNNAMED
- PLC Ver.: v1.6
- Remote Access Right
- Hot Restart:  (with sub-fields for hr, min, sec)
- Restart Mode:  Cold Restart,  Warm Restart
- Resource(CPU) Property table:

Resource	Name	Scan W.D Timer
Resource 0	RES0	200 ms
- Buttons: OK, Cancel, Help

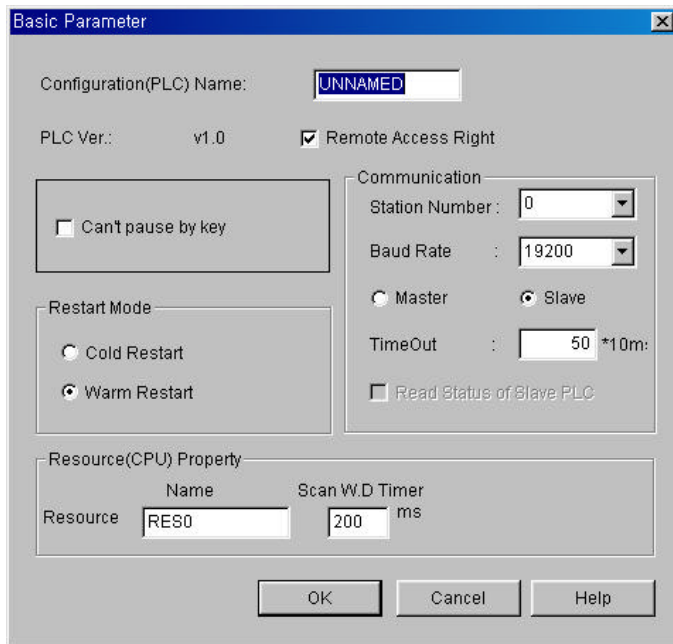
PLC type (GM2 GM5)

The screenshot shows the 'Basic Parameter' dialog box for GM1 PLC type. The dialog has a title bar with a close button. It contains the following fields and options:

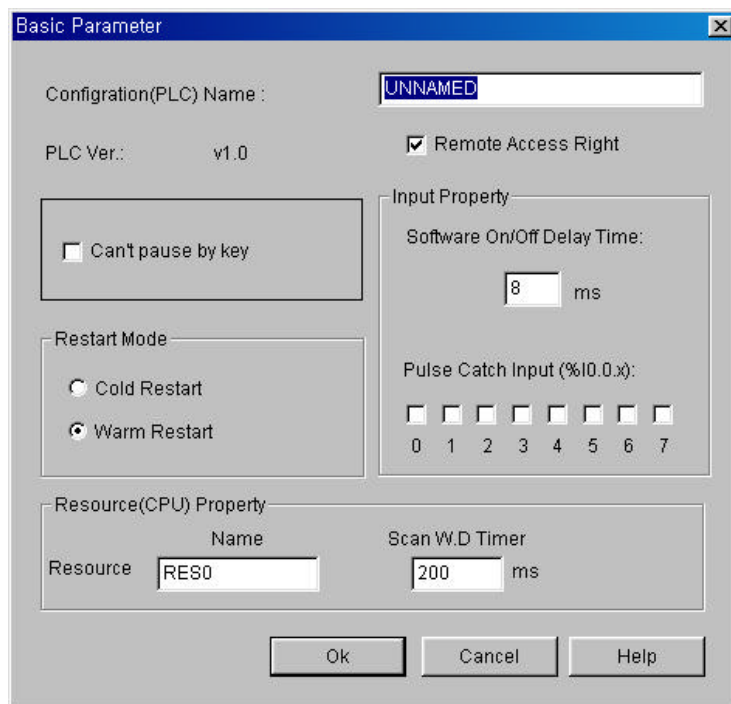
- Configuration(PLC) Name: UNNAMED
- PLC Version: v1.0
- Remote Access Right
- Hot Restart:  (with sub-fields for hr, min, sec)
- Restart Mode:  Cold Restart,  Warm Restart
- Multi CPU Running Mode:  Scan Synchronous,  Scan Asynchronous
- Resource(CPU) Properties table:

Resource	Name	WatchDog Timer Duration
Resource 0	RES0	200 ms
Resource 1	RES1	200 ms
Resource 2		ms
Resource 3		ms
- Buttons: OK, Cancel, Help

PLC type (GM1)



PLC type (GM6)



PLC type (GM7)



## Chapter 4. Edit a Project

---

Enter the PLC name in the "**Configuration (PLC) Name**" text box.

You can form PLC name with maximum 8 characters of alphabets and numbers.

And it becomes a configuration name.

"**Applied PLC Ver**" shows you available PLC version in the GMWIN Version.

Setup the permission of the remote access in "**Remote Access Right**" check box.

(Default : permission)

Set Hot Restart option. If the "**Hot Restart**" option is checked, hot restart will be operated.

Then you must set the hot restart time, and you can set it from " 1 second" to "23 hour 59 minute 59 second" with second scale.

Set Cold Restart or Warm Restart by clicking option radio box in **Restart Mode**.

Choose one mode of scan synchronization and scan synchronization in the GM1 Multi CPU system by clicking option radio button in the "**Multi- CPU Running Mode**". (available for only GM1)

Type the resource name in the text box of "**Set Resource(CPU) Properties**".

Resource name is formed with 8 characters of alphabet and digit.

Set the watchdog time in the text box of "**Watchdog Timer Duration**".

Maximum time is "65535 ms" with "1 ms" scale. (GM7 : Max. 5000ms)

In GM7, you can set ' Software On/Off Delay Time ' and ' Pulse Catch Input (%I0.0.x) ' in Input property box. Please refer the GM7 user' s manual for details.

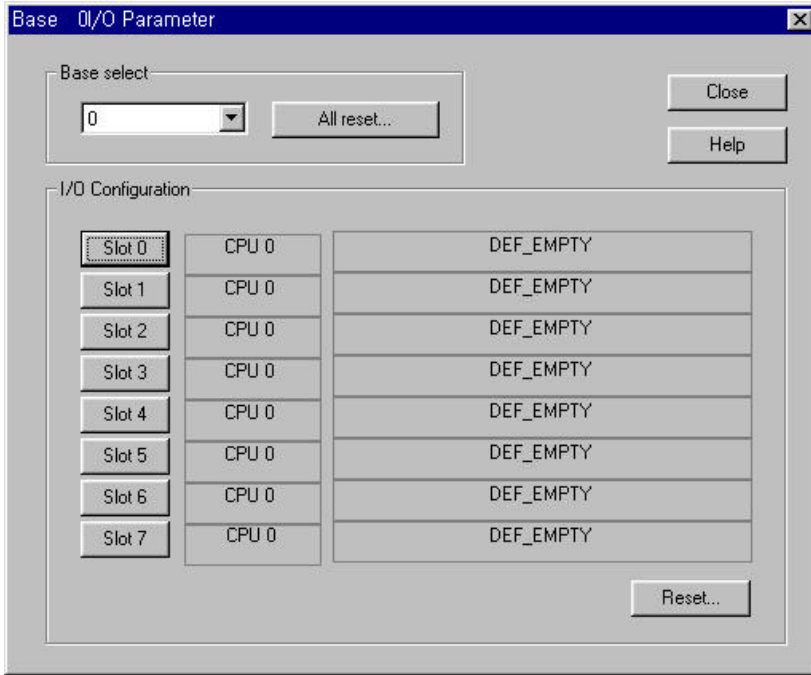
### Note

1. Refer to the PLC User Manual about Remote Access Authority, Restart and %M area.
2. In case of GM1, it is available for resource 0 3.
3. In case of GM1, it has Multi-CPU Running setting mode.
4. In case of GM5, it has RS-422 speed setting mode.
5. In case of GM6, it has computer network setting mode.
6. In case of GM7, it has input property setting mode.
7. In case of GM6 and GM7, they do not support hot restart function.

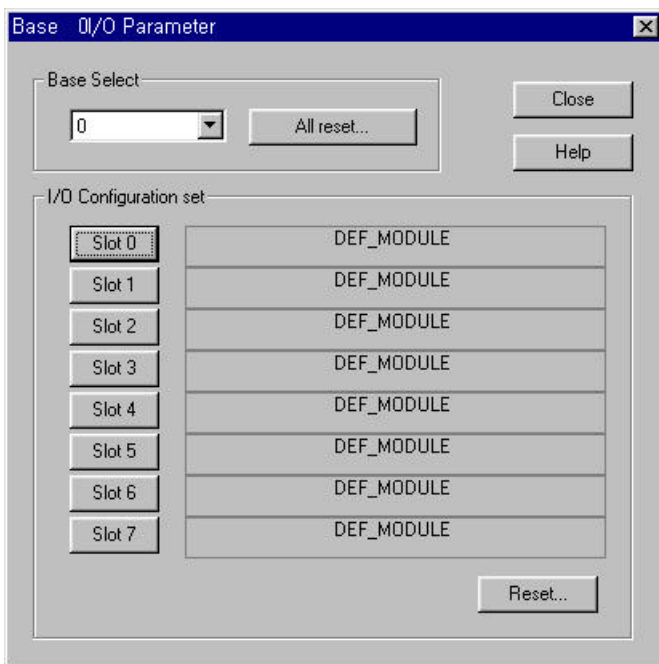
### 4.5.2. Set I/O Parameter

To set the I/O Parameter,

Double-click on the "**Parameters - I/O Parameters**" in Project window, or move a cursor to "**Parameters - I/O Parameters**" and select "**Project – Edit Project Item**".



GM1



GM2 GM6

**Note**

In case of GM1, CPU configuration item (see above figure) is added.  
 (I/O type is set as DEF\_EMPTY)  
 In case of GM7, it has no I/O parameter setting.

## Chapter 4. Edit a Project

Select the base number to set in the "**Base Select**", and the setting content of base you choose is displayed in the "**I/O configuration set**".

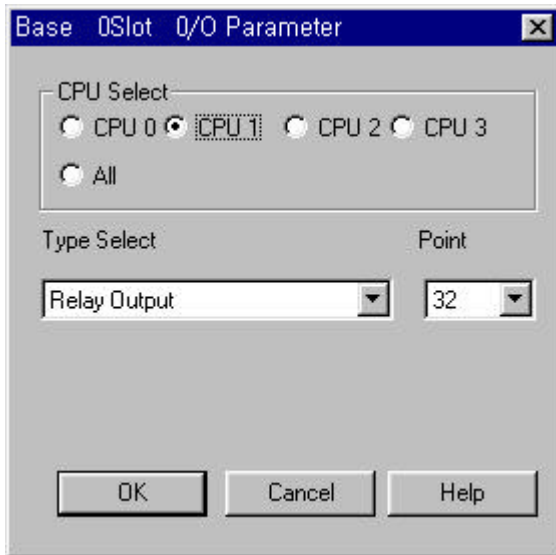
If you click "**All Reset**" in the "**Base Select**", then I/O parameters in all bases are changed into default value.

If you click the "**Reset**" in the "**I/O configuration set**", then I/O parameter in the selected base slot is changed into default value.

Base setting range with PLC type

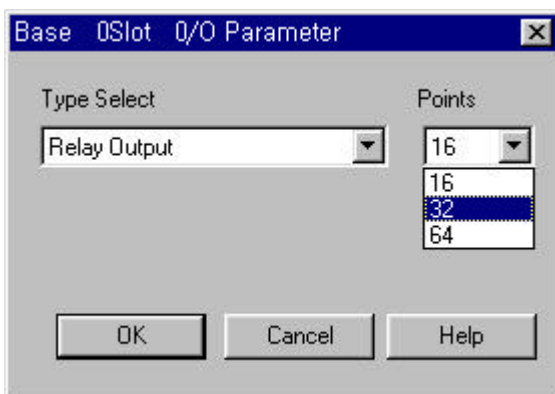
PLC type	Range
GM1	Base 0 31
GM2	Base 0 7
GM3,4	Base 0 3
GM6	Base 0 ~ 1

If you want to set the I/O parameter of each slot, select the slot number in the "**I/O configuration set**" by clicking slot number button. Then "**Base Slot I/O Parameter**" dialog box is displayed as below.



GM1

Select an item at the "**Type Select**", and select the number of I/O in the "**Point**". Click **OK** button.



GM2~6

### Note

In case of GM1, the option of CPU select and Redundancy are added.

Reference

I/O type used as default value

I/O type	Content
DEF_I	When power is on, the input module in a selected slot is registered as default value at the I/O refresh table.
DEF_O	When power is on, the output module in a selected slot is registered as default value at the I/O refresh table.
DEF_IO	When power is on, the input/output module in a selected slot is registered as default value at the I/O refresh table.
DEF_SP	When power is on, the special module in a selected slot is registered as default value at the I/O refresh table.
DEF_MODULE	When power is on, the module in a selected slot is registered as default value at the I/O refresh table.
DEF_EMPTY	When power is on, the selected slot is registered as empty slot at the I/O refresh table.

1) Base Setup



In case of GMR, you have to set a Base in the **Base select** box.

◆ **Local A**

Single input/output(I/O) can be installed only CPU A. And I/O module of digital content can be installed for Single I/O.

Setting each base as ' **Local A** ' in the Base Selection box makes Single I/O and this system can be used for the part no required backup to save the cost of redundancy.

◆ **Redundancy Input/Output**

CPU-A and CPU-B are operated using the same program simultaneously. When the system needs the data synchronization during the operating, they synchronize data each other. If the operating is stop by disorder of master CPU, the stand-by CPU maintain it' s operating continuously. At this time, the input/output connected to the master CPU in base set as redundancy input/output gets OFF.

In this system, both of the master CPU and stand-by CPU control the input/output modules. For input data, you can apply the data it had two or more same value in comparing the input values of Master, Stand-by and Transfer.

Setting up each base as ' **Redundancy** ' in the Base Selection box makes Redundancy input/output. You have to set both bases with the same number. And you set the transfer I/O location for the input comparison and the output feedback.

◆ **Transfer Input/ Output**

CPU-A and CPU-B are operated using the same program simultaneously. When the system needs the data synchronization during the operating, they synchronize data each other. If the operating is stop by disorder of master CPU, the stand-by CPU maintain it' s operating continuously. At this time, the input/output of each base set as transfer I/O are continuously executed without any change of this status.

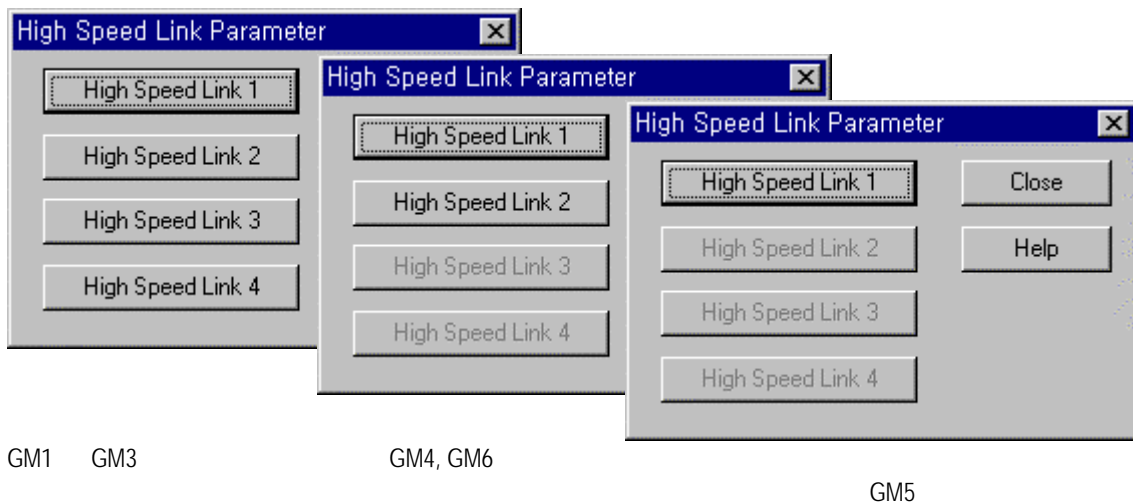
This system can call as a redundancy CPU because Redundancy input/output is not setting. This system is set by setting up as ' **Transfer I/O** ' in the parameter setting part. The stand-by CPU reads the information in the input/output

module periodically and check any fault of the connection.

### 4.5.3. Set the High Speed Link Parameter

To set the High Speed Link Parameter,

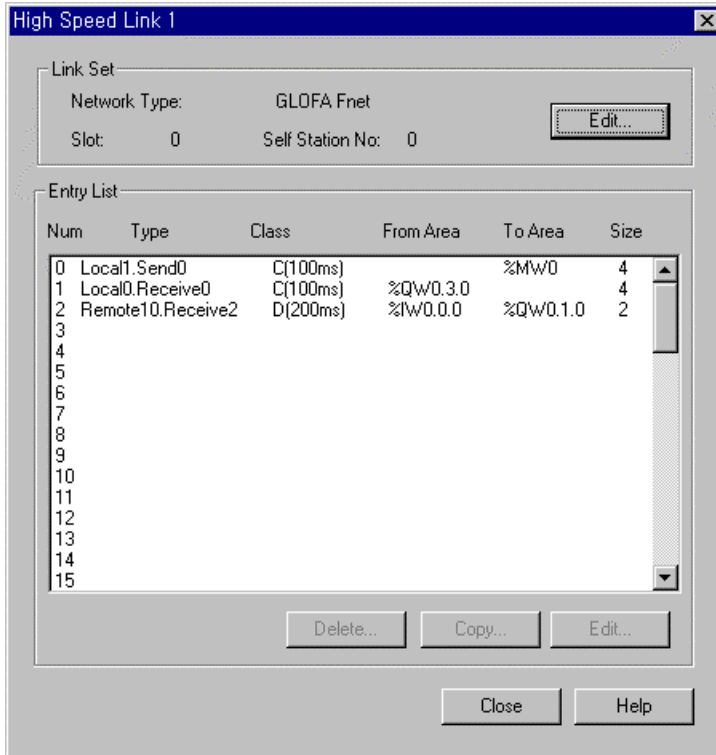
Double-click on the "*Parameters - Link Parameters*" in Project window, or move a cursor to "*Parameters - Link Parameters*" and select "*Project - Edit Project Item*".



#### Note

The configuration for setting High Speed Link Parameter according to PLC type is like the above figure.  
GM1/2/3 : High Speed Link 1 4 , GM4 / 6 : High Speed Link 1 2, GM5 : High Speed Link 1

If you click the High Speed Link Number button in the *High Speed Link Parameter* dialog box, then "*High Speed Link*" dialog box will be displayed, which shows the list of registered item and setting information of selected link.



The "**High Speed Link**" dialog box allows you to setup the information of Link Setup and each registered List. You can use the "**Delete**", "**Edit**", "**Copy**" and etc. button, or "**Del**" key to delete an item and "**Ctrl-V/Ctrl-C**" key to "**Copy/Paste**".

Reference

Method of multi-selection has two ways, one is selection in order, the other is selection of scattered items in list.

1) How to select multi-items in order.



Click the first registered item you wanted in the list.  
 Drag a mouse to the final item in the desired list with pressing the left button of it.



Move a cursor to registered list with "**Tab**" key, and move the cursor to the first registered item in the desired list with "**Arrow**" key.  
 Move the cursor to the final item in the desired list with "**Arrow**" key by pressing "**Shift**" key.

2) How to make a multi-selection for scattered items.



By pressing "**Ctrl**" key, click mouse button on each registered item.



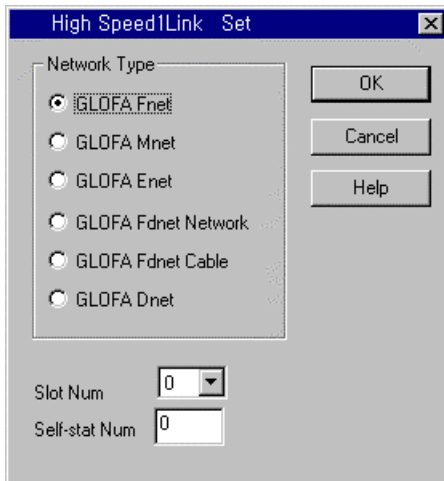
Move a cursor to the registered list with "**Tab**" key, and move cursor to the first registered item in the desired list with "**Arrow**" key.  
 Press the "**Shift + F8**" key, and cursor start to blink.  
 Move cursor to the desired item with "**Arrow**" key.  
 Select each registered item with "**Space**" key.  
 If you finish the selection, Press "**Shift + F8**" key.

## Chapter 4. Edit a Project

---

### 1) Set Link Information

Click "**Edit**" button at the "**Link Set**" area in the "**High Speed Link Set**" then "**High Speed1Link Set**" dialog box appears, which allows you to setup the information for the link setting.



The dialog box titled "High Speed1Link Set" contains the following elements:

- Network Type:** A group box containing six radio buttons:  GLOFA Fnet,  GLOFA Mnet,  GLOFA Enet,  GLOFA Fdnet Network,  GLOFA Fdnet Cable, and  GLOFA Dnet.
- Buttons:** Three buttons are located on the right side: "OK", "Cancel", and "Help".
- Slot Num:** A dropdown menu currently showing "0".
- Self-stat Num:** A text input field containing "0".

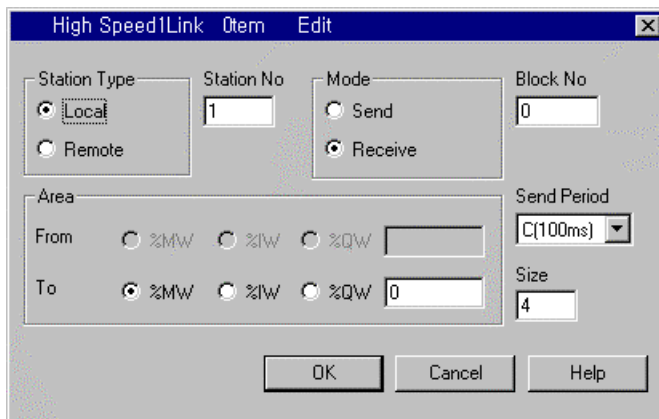
Select a network type in "**Network Type**" option radio button.

Select the slot number of the link module in "**Slot Num**" List box.

Select the self station number to save the High Link Parameter in the "**Self-Stat Num**" text box.

### 2) Set Entry List

Click "**Edit**" button at **Entry List** box after selecting registered list number, then "**High Speed Link Item Edit**" dialog box appears, which allow you to setup the information of the entry link list.



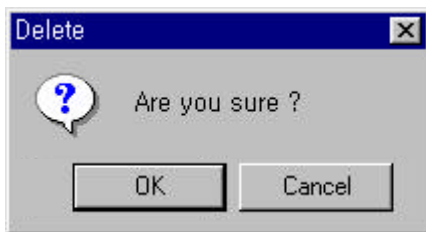
The dialog box titled "High Speed1Link Item Edit" contains the following elements:

- Station Type:** Two radio buttons:  Local and  Remote.
- Station No:** A text input field containing "1".
- Mode:** Two radio buttons:  Send and  Receive.
- Block No:** A text input field containing "0".
- Area:** A group box containing two rows of radio buttons and text input fields:
  - From:** Radio buttons for  %MW,  %IW, and  %QW, followed by an empty text input field.
  - To:** Radio buttons for  %MW,  %IW, and  %QW, followed by a text input field containing "0".
- Send Period:** A dropdown menu showing "C(100ms)".
- Size:** A text input field containing "4".
- Buttons:** Three buttons at the bottom: "OK", "Cancel", and "Help".

Select whether Station Type is local or remote in "**Station Type**" option radio button.  
Set the station number in the "**Station No**" text box.  
Select whether it is data to send or receive in "**Mode**" option radio button.  
Set the block number in the "**Block No**" text box.  
Select the send period in the "**Send Period**" list box.  
(A:20ms, B:50ms, C:100ms, D:200ms, E:500ms, F:1S, G:5S, H:10S)  
Set the send/receive area in the "**Area**" option radio box. Each area is selected by option button and address is fixed in each text box.  
Set the data size to communicate in the "**Size**" text box.(by word size)

### 3) Delete Entry List

Click "**Delete**" button or "**Del**" key, after selecting the entry list number to delete at entry list box in "**High Speed Link**" dialog box.



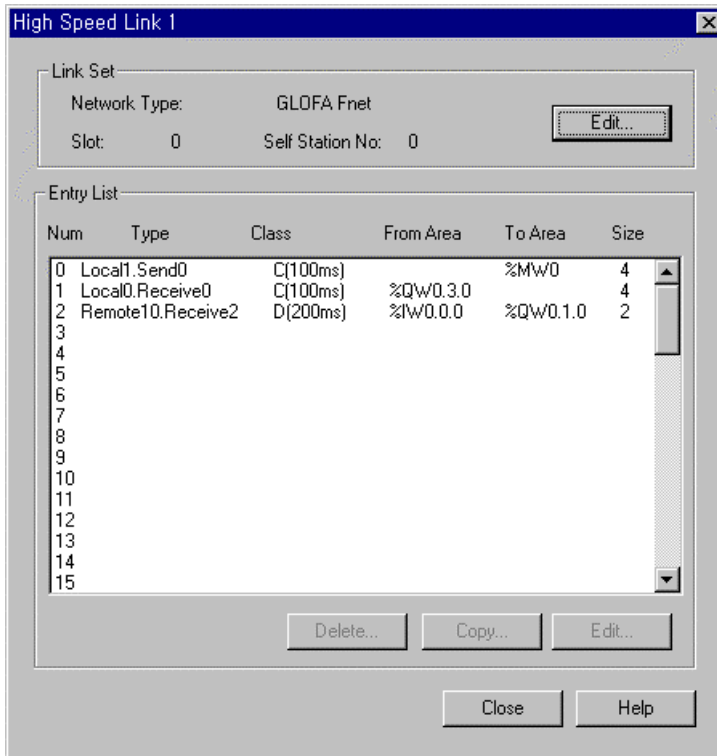
You can delete the selected item by clicking "**OK**" button, otherwise click "**Cancel**" button.



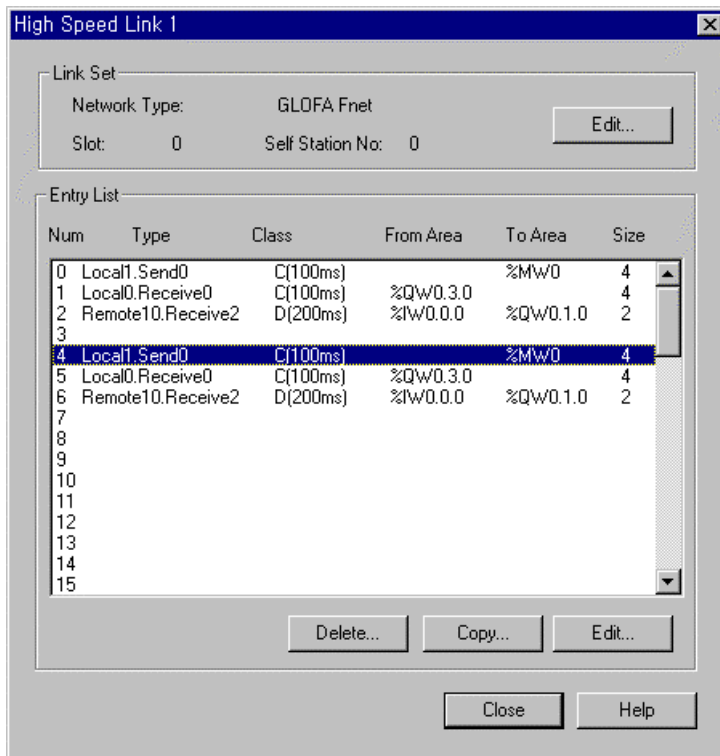
## Chapter 4. Edit a Project

### 4) Copy Entry List

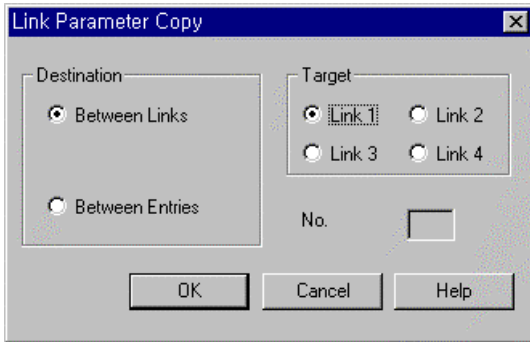
To copy the list within Entry List each other in "**High Speed Link**" dialog box,  
(1) Press "**Ctrl - C**" to copy, after selecting the item to copy using a cursor or mouse.



(2) Press "**Ctrl - V**" to paste, after moving a cursor to the location you want.



Click "**Copy**" button, after selecting the entry item number at the entry list box in the "High Speed Link" dialog box.

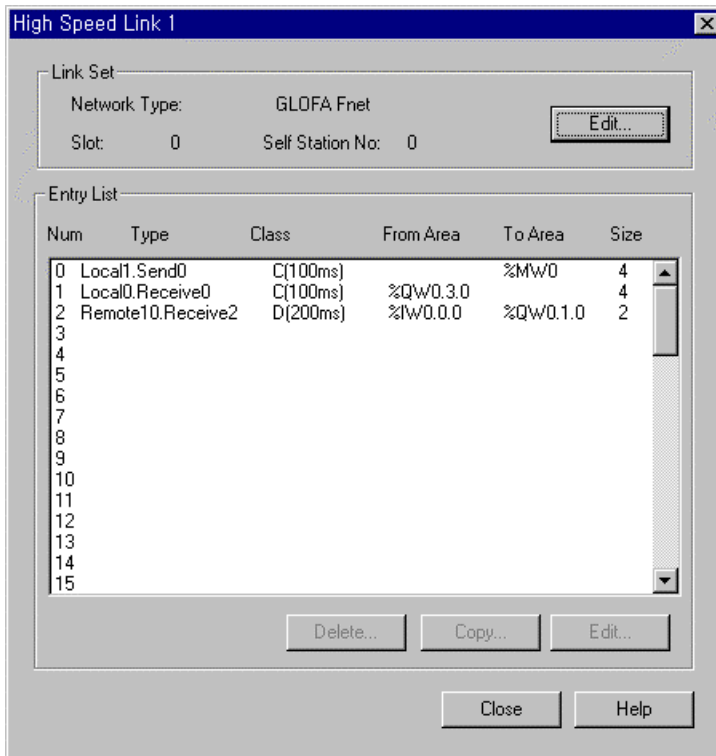


**A) Copy Between Links**

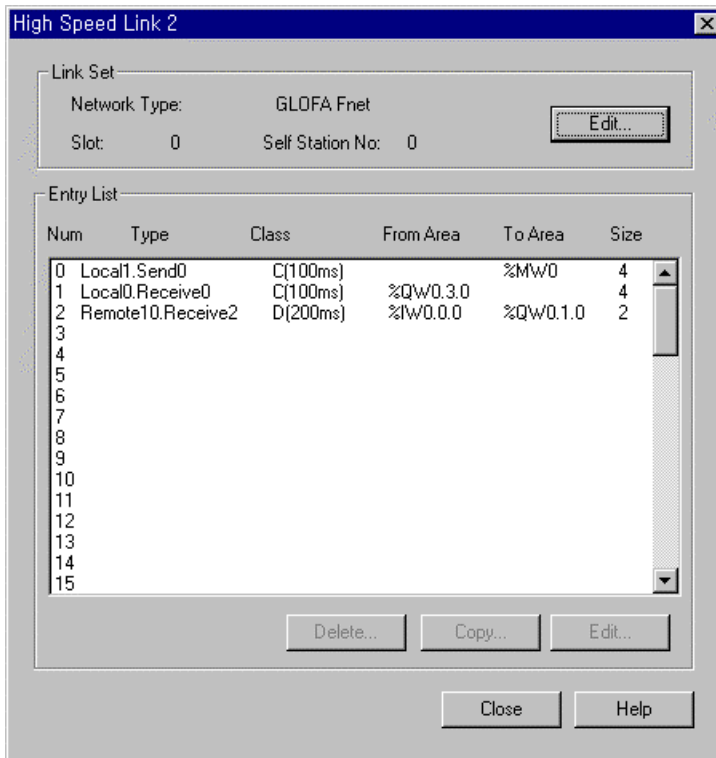
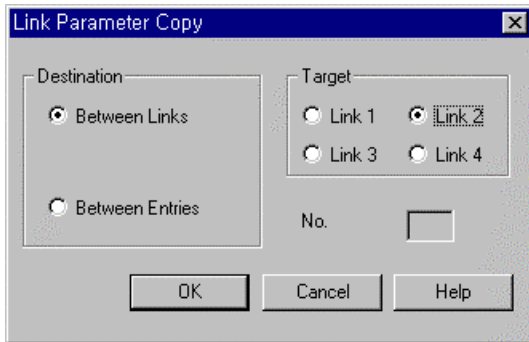
Select "**Between Links**" option to copy a selected list to other link.  
 Select the Link number to paste in "**Target**" option radio button.

Example) To copy the entry list 0.1.2.3 in High Speed Link 1 to 0.1.2.3 in High Speed Link 2,

(1) Select the entry list 0.1.2 in the "**High Speed Link 1**".



- (2) Click "**Copy**" button
- (3) Choose the "**Between Links**" in "**Link Parameter Copy**" dialog box
- (4) Select "**Link 2**" in "**Target**" box and click **OK** button.

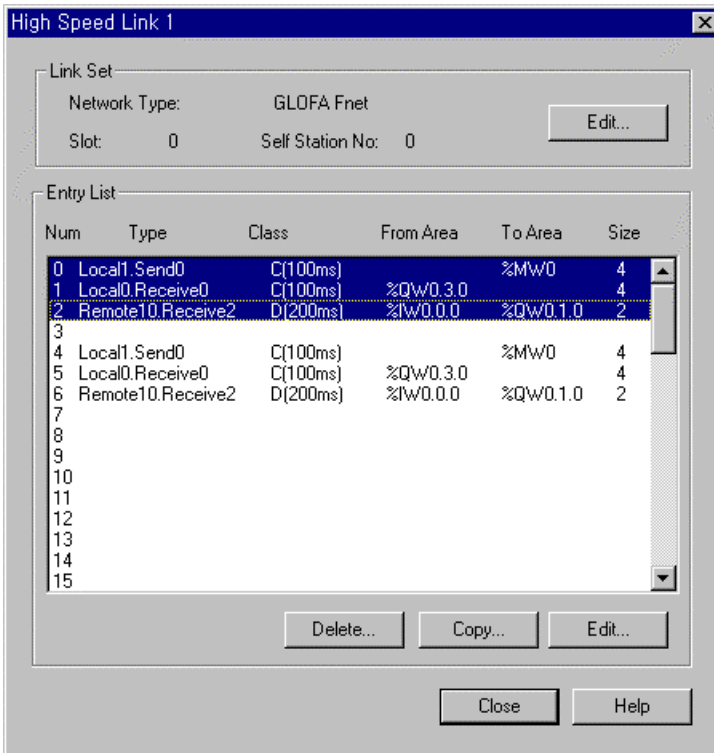


B) Copy Between Entries

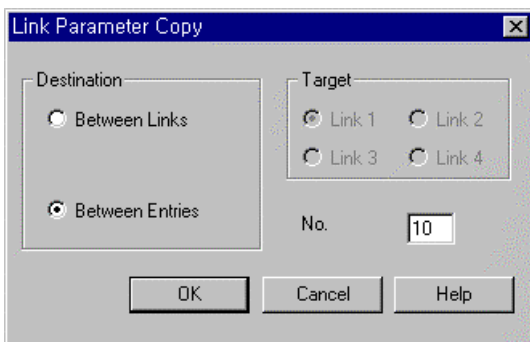
Select the "**Between Entries**" option to copy selected entries to other link list in the same link.  
 Enter the entry Item number to paste in "**Target**" option radio button.  
 selected entry Items are copied from selected number.

Example) To copy entry Items 0.1.2 in High Speed Link 1 to 10.11.12 in High Speed Link 1,

(1) Click "**Copy**" button, after selecting entry Items 0.1.2 in High Speed Link 1.



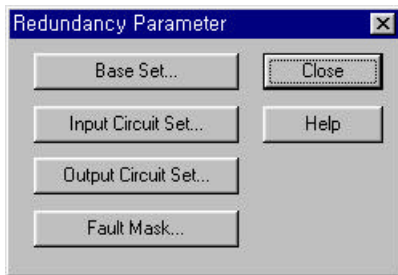
- (2) Choose "**Between Entries**" at the "**Link Parameter Copy**"
- (3) Enter "**10**" in the "**Link Parameter Copy**" text box.
- (4) Click **OK** button.



### 4.5.4. Set Redundancy Parameter

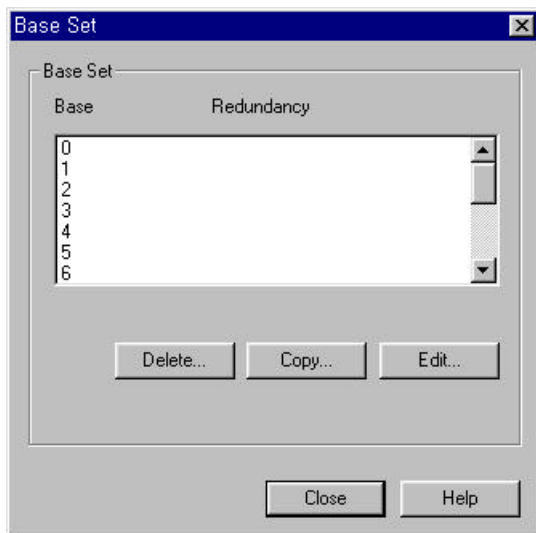
This function is available only for **GM1RED** PLC.

Double-click on the **Parameter - Redundancy Parameter** in Project window or move a cursor on the **Parameter - Redundancy Parameter** and choose **Project - Edit Project properties** in pull-down menu.



#### 1) Base Set

At **Redundancy Parameter** dialog box, click the **Base Set...** button for setting base.



Double-click on the item that you want to set or click **Edit** button to set the base.

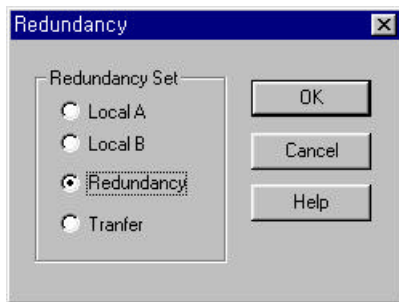
To delete entry items, select the items and click **Delete...** button.

To copy entry items, select the items and click **Copy** button.

You can copy by entering the position of the base and clicking **OK** button.



To edit entry items, select the items and click **Edit** button. Then **Redundancy** dialog box appears. Select the item you want to edit and click **OK** button.



**Single Input/Output(I/O)**

Local A and Local B are operated by the same program simultaneously, and the data is synchronized by transferring inputted data from Local A to Local B. When system stops operating by Local A disorder, input/output of Local A stops operating and all connected outputs get OFF.

Single I/O can be installed only in Local A. And only I/O modules of digital contacts can be installed for Single I/O.

Single I/O is made by setting each base as 'Single input/output' in the setting part.

And this system can be used for the part not to require backup to save cost for redundancy

**Redundancy Input/Output**

Local A and Local B are operated by the same program simultaneously. When the system needs the data synchronization during the operating, they synchronize data each other.

If a system stops operating by disorder of master CPU, the stand-by CPU starts operating immediately and continues its operating. At this time, the input/outputs connected to the master CPU in bases set as redundancy input/output get OFF.

In this system, both of master CPU and stand-by CPU control the input/output modules.

For input data, the data can be adapted as the input data after comparing the data among Master, Stand-by and the transferred value.

Redundancy input/output is set by setting up each base as 'Redundancy input/output' in the setting part. And both bases of Local A and Local B must be set as the same number. And you set the transfer I/O location for the input comparison and the output feedback.

**Transfer input/output**

Local A and Local B are operated by the same program simultaneously. When the system needs the data synchronization during the operating, they synchronize data each other.

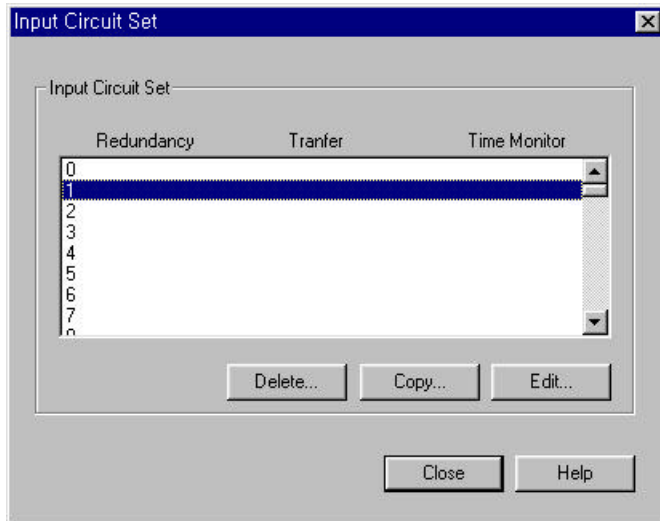
If the master CPU is out of order, the system stops and the stand-by CPU starts operating immediately and continues its operating. At this time, the input/outputs of each base set as transfer I/O are continuously executed without any change of the status.

This system can call as a redundancy CPU because an input/output is not for the redundant mechanism. This system is set by setting up as "Transfer I/O" in the parameter setting part.

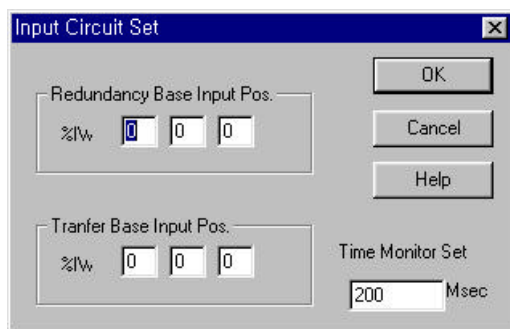
The stand-by CPU reads the information in the input/output module periodically and checks any fault of the connection all the time.

### 2) Input Circuit Set

The below dialog box is for setting triple redundancy input.  
Click Circuit Set button in the **Redundancy Parameter** dialog box.



If you double-click the item in the **Input Circuit Set** dialog box, or click **Edit** button, the **Input Circuit Set** dialog box appears. It allows you to set input circuit for the appropriate item.



Triple redundancy input

Triple redundancy input allows you to use that data as input value of the program after selecting identified 2 data of 3 data compared to the inputted data. So, you must have 2 input modules mounted on the same redundancy base slot and 1 input module mounted on the transfer base.

To set the Input Circuit Item,

Position of Redundancy Base Input

Indicates the position and channel of input module mounted on a redundancy base for the triple redundancy input. There is only one item for fixing a position because input module of both Local A and B must be on the same base slot. And the designated base must be set as **Redundancy I/O** in the **Base Set** dialog box.

Position of Transfer Base Input

Indicates the position and channel of input module mounted on a transfer base for the triple redundancy input. And the designated base must be set as **Transfer I/O** in the **Base Set** dialog box.

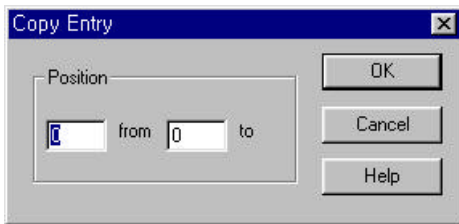
Setting Time Observation

It is time value for allowing temporary disagreement of input value by delay of the input module.

To delete the entry item, select the item and click **Delete** button.

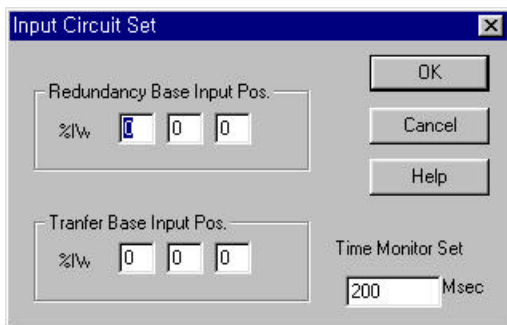
To copy the entry item, select the item and click **Copy** button.

Then **Copy Entry** dialog box appears. Enter the position to copy, and click **OK** button.



To edit the entry item, select the item and click **Edit** button.

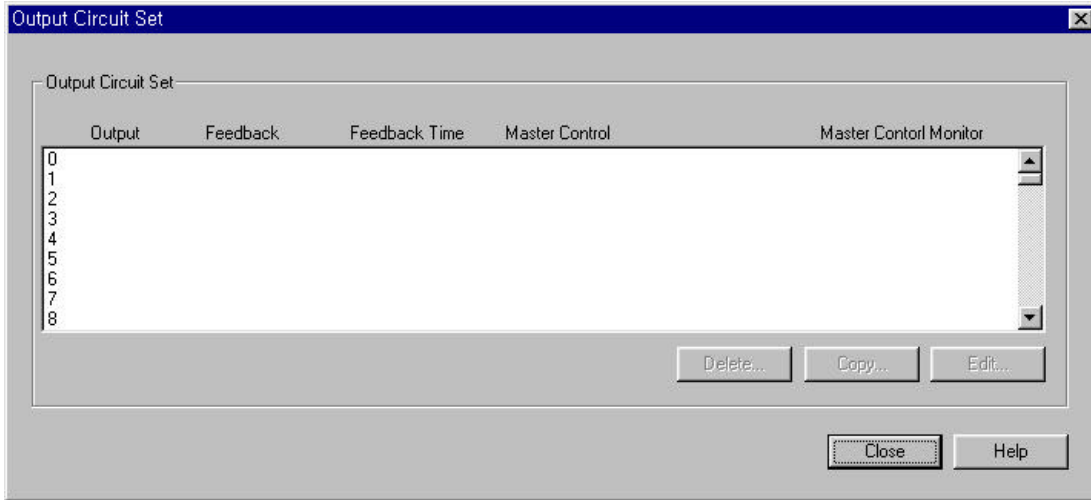
Then **Input Circuit Set** dialog box appears. Enter the data and click **OK** button.



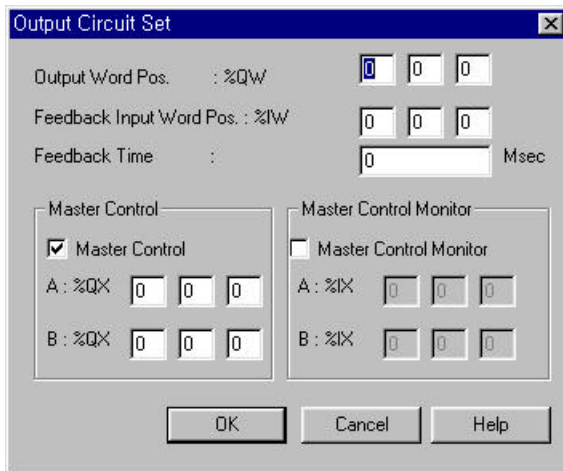


3) Output Circuit Set

Click the output circuit setting button in *Redundancy Parameter* dialog box.



Double-click on the item to set or click on *Edit* button in the *Output Circuit Set* dialog box. Then *Output Circuit Set* dialog box appears. It allows you to set the selected item.



Position of Output Word

Indicates the position and channel of redundancy output module. At this time the designated base must be the base set as *Redundancy I/O* in the *Base Setting* dialog box.

Location of Feedback Input Word

When setting redundancy output as O-F type, it indicates the position and channel of feedback input module. At this time, the designated base must be the base set as *Redundancy/Translate I/O* in the *Base Setting* dialog box.

Feedback Time

When setting redundancy output as O-F type, it indicates the time interval for admitting temporary disagreement of a output value and feedback input.

Master control

When setting redundancy output as O-F type, it indicates the position and the number of the output to cut off the power and contact number. And the designated base must be the base set as *Redundancy/Transfer I/O* in the *Base Setting* dialog box.

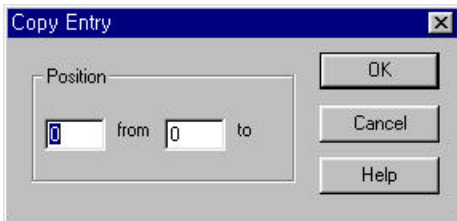
Observation of Master control

When setting redundancy output as O-F type, it indicates the position of the input that observe output to cut off the power and contact number. And the designated base must be the base set as *Redundancy/Transfer I/O* in the *Base Setting* dialog box.

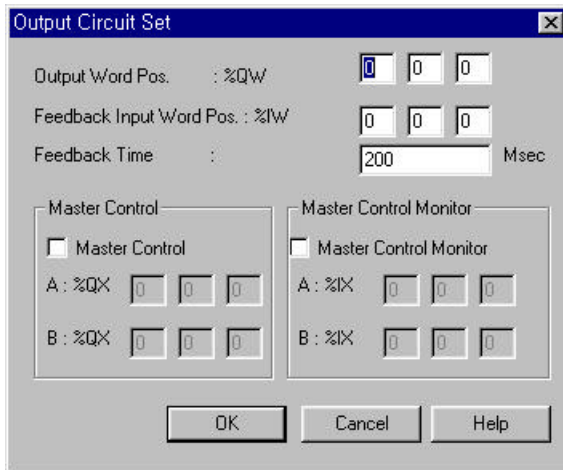
To delete the entry item, select the item and click *Delete* button.

To copy the entry item, select the item and click *Copy* button.

Then *Copy Entry* dialog box appears. Enter the position to copy and click *OK* button.



To edit the entry item, select the item and click *Edit* button. Then *Output Circuit Setting* dialog box appears. Enter the desired value, and click *OK* button.

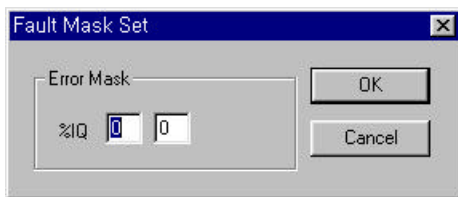


4) Fault Mask Set

Click the **Fault Mask set...** button in the **Redundancy Parameter** dialog box.



In **Fault Mask Set** dialog box, if you double-click on the item to set or click **Edit** button, **Fault Mask Set** dialog box appears, which helps to set the input circuit for the appropriate item.

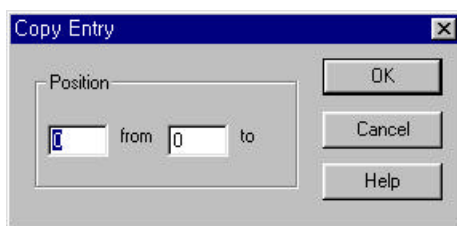


The Position of module to be continued in case of disorder

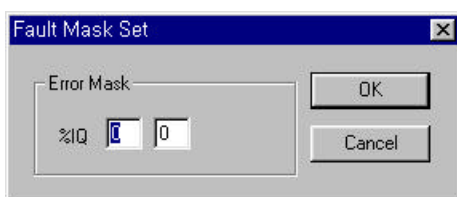
When a machine is out of order, you can select the position of module to be continued at any base setting status.

To delete the entry items, select the item and click **Delete** button.

To copy the entry items, select the item and click **Copy** button. Then **Copy Entry** dialog box appears. Enter the position to copy and click **OK** button.



To edit the entry items, select the item and click **Edit** button. Then **Fault Mask Set** dialog box appears. Enter the desired value and click **OK** button.



### 4.5.5. Set Communication Parameter

In GM7, select Communication Method, Protocol and Transmission Mode.

- ◆ Double-click on the **Parameter-Redundancy Parameter** in Project window or move a cursor to the **Parameter-Redundancy Parameter** and select **Project-Edit Project Properties** in Menu.

**Communication Parameter**

Communication Method

Station No. : 0

Baud Rate : 19200      Data Bit : 8

Parity Bit : None      Stop Bit : 1

Communication Channel

RS232C Null Modem or RS422/485

RS232C Modem (Dedicated Line)      Init. Command : ATZ

RS232C Dial Up Modem

Protocol and Mode

Timeout in Master Mode : 500 ms

Dedicated

Master       Read Status of Slave PLC      List

Slave

Modbus

Master      Transmission Mode : ASCII

Slave

User Defined

Master      List

Slave

Ok      Cancel      Help

## Chapter 4. Edit a Project

- ◆ Set the Communication Method as follows.

Item	Contents
Self Station No.	0-31 are selectable. (* Note 1)
Baud Rate	You can set 1200, 2400, 4800, 9600, 19200, 38400, 57600 bps.
Data Bit	You can set 7 or 8 Bits. (*Note 2)
Parity Bit	You can set None, Even and Odd.
Stop Bit	You can set 1 or 2 Bit(s) (* Note 3)
Communication Channel	<ul style="list-style-type: none"> <li>• RS232C Null Modem or RS422/485 : Select it to communicate with the internal function of GM7' s basic unit or Cnet I/F module(G7L-CUEC).</li> <li>• RS232C Dedicated Line : On communication with Cnet I/F module(G7L-CUEB), if you use a Dedicated Line, select this channel.</li> <li>• RS232C Dial Up Modem : On communication with Cnet I/F module(G7L-CUEB), if you use the Dial Up Modem, select this channel.</li> </ul> Note) A Communication of RS232C Dedicated Modem or RS232C Dial Up Modem is available at the Cnet I/F module(G7L-CUEB) supports RS232C only and no available at the Cnet I/F module (G7L-CUEC) supports RS422/485.
Timeout in Master Mode	<ul style="list-style-type: none"> <li>• It is a waiting time of an answer frame after transmitting required frame in the GM7 is set as Master.</li> <li>• Default value is 500ms.</li> <li>• You have to set it under the consideration of the maximum period of Master PLC transmission and receiving(Tx/Rx).</li> <li>• If you set the less value than the maximum period of Master PLC transmission and receiving.</li> </ul>
Master / Slave	If you set the Master, it become the subject in the communication system and it allows reading and writing the data in the selected device(PLC).
Read Status of Slave PLC	Set it to read the Status of GM 7 basic unit is designated as Slave. Do no select it except monitoring the status of slave. It can reduce communication speed. (You can set it in the dedicated protocol only)
Transmission Mode	ASC II or RTU Mode is selectable. (You can set it in the Modbus Protocol only)

\*Note 1) In Modbus, do not set the broadcast station number with ' 0' .  
It is became one factor of a wrong operation.

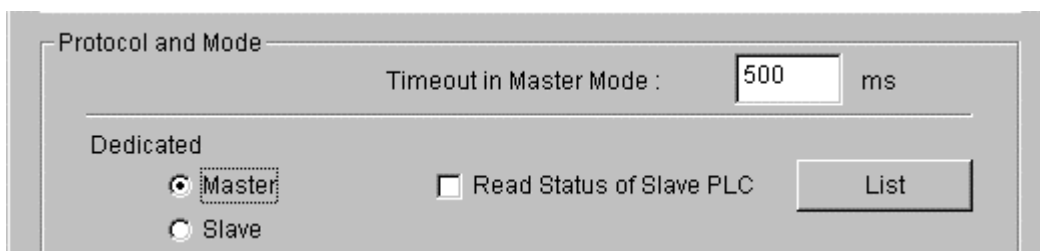
In GM7, Broadcast is not supported.

\*Note 2) In Modbus, set 7Bits in the ASC II box and set 8 Bits in the RTU mode.

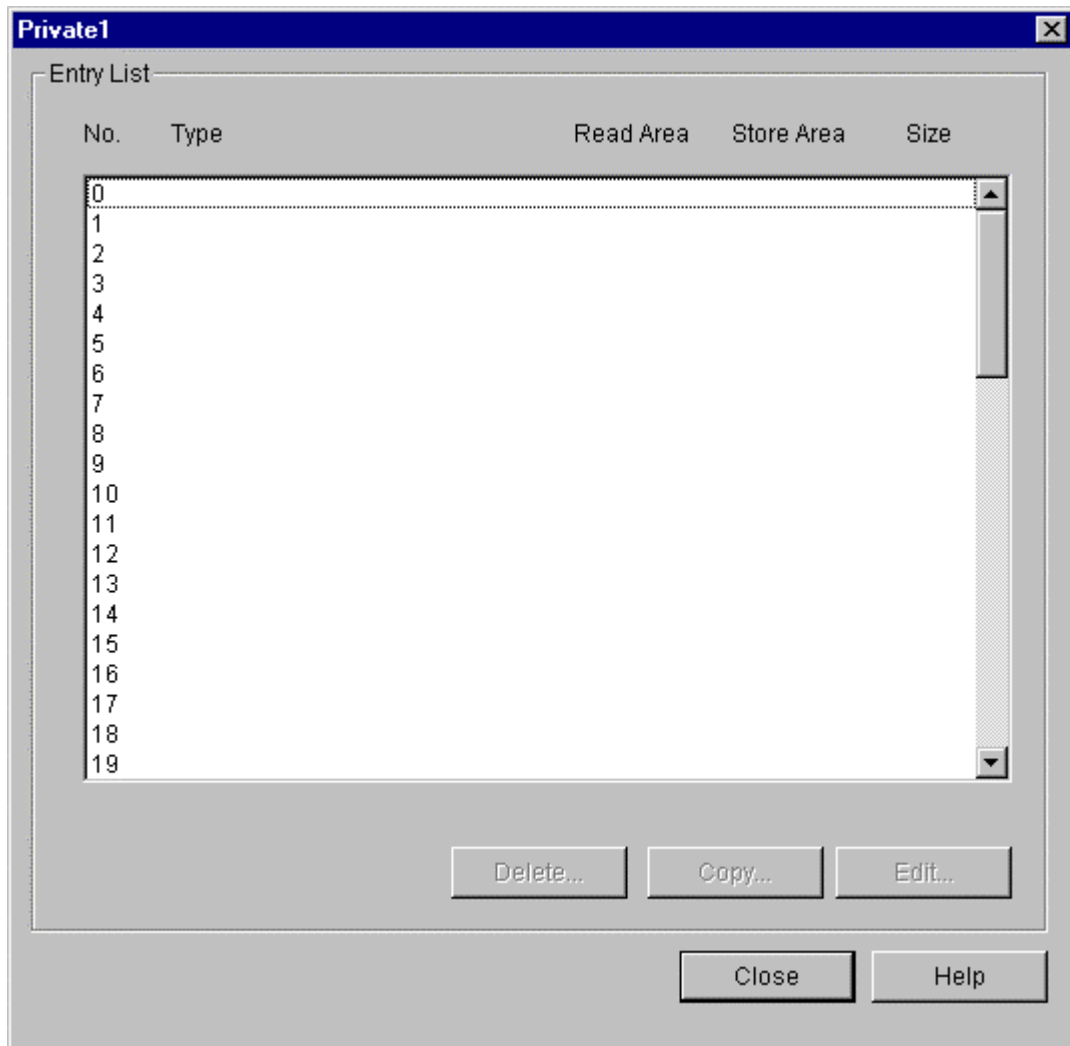
\*Note 3) In Modbus, please set the Stop Bit as ' 1' when you set the Parity Bit, and set ' 2' if you not set the Parity Bit.

### 1) Private Communication

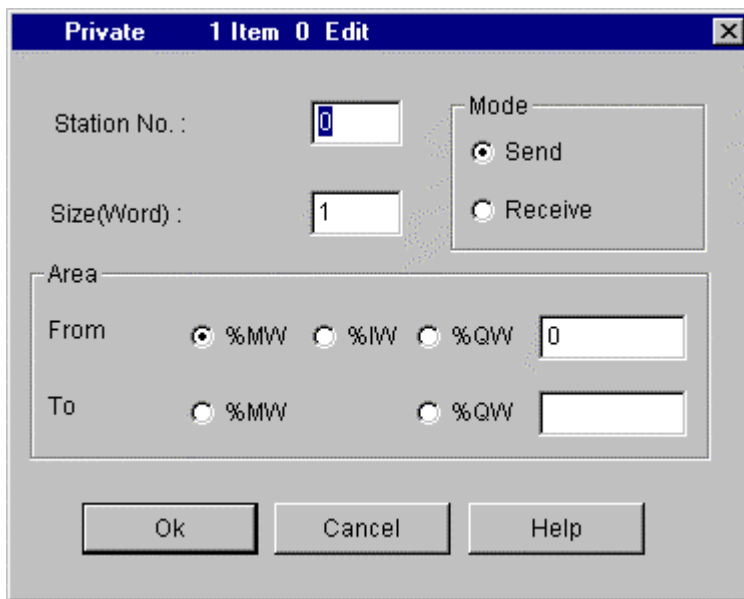
- ◆ Set the Protocol as Dedicated Line, and select Master or Slave.  
If you selected Master, Entry List button appears.



- ◆ Click the Entry List button, then Private 1 dialog box appears.



- ◆ The above dialog box allows you to set the information of each registered List. You can use the "Delete", 'Edit', 'Copy' and etc. button, or 'Del' key to delete the multi-selected items and 'Ctrl-V/Ctrl-C' key to Copy and Edit.
- ◆ Click the desired number in the Entry List then the **Entry List Set** dialog box appears.

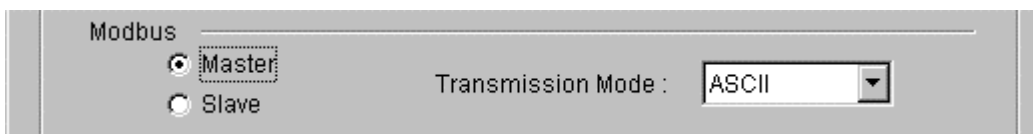


- ◆ Select the Send button in Mode when you want Data writing to the Slave station, and select the Receive button if you want Data reading from the Slave station.
- ◆ Set the Slave Number(Opposite station) in the **Station No.** box.
- ◆ Set the data size in the Size(Word) box in word.  
Max. 60 words are available.
- ◆ Set Tx/Rx area in the Area box. Select each area by option button, and designate the address in each input box.

**Note**

- 1.If you select %MW0 : Enter ' 0' in the input box after selecting ' %MW' .
- 2.If you select %QW0.1.0 : Enter ' 0.1.0' in the input box after selecting ' %QW' .

## 2) Modbus Communication



- ◆ Set the Protocol with Modbus, and select Master or Slave.
- ◆ Select ASCII in the Transmission Mode box.

**Note**

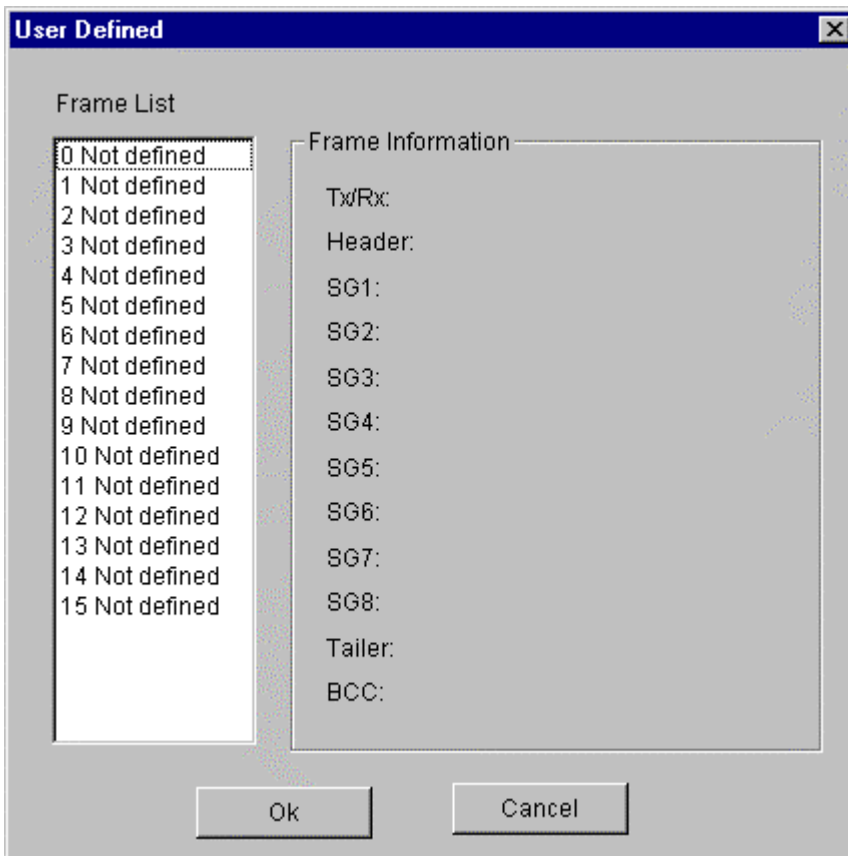
1. Modbus communication use the function block(MOD0102,MOD0203,MOD0506,MOD1516).  
Refer to GM7 Manual ' 8.3 Modbus Protocol Communication' for more details.

3) User Defined Communication

- ◆ Set the Protocol as User Defined, and select Master or Slave.



- ◆ Click the desired number in the Frame List then the Frame Information Set dialog box appears.





- ◆ Set Tx or Rx in the Tx/Rx box.
- ◆ Enter the Header, Segment and Tail in each box.

**Note**

Refer to the GM7 Manual "8.2 User Defined Protocol Communication for more details.