

Standard Specifications		
Item	Craft ROBO ( CC200-20 )	Craft ROBO Pro ( CE5000-40-CRP )
Feeding method	Grit rolling	
Drive	Stepping motor	Digital servo
Maximum cutting range	200 mm x 1000 mm	375 mm x 50 m
Range of guaranteed precision *1		356 mm x 2 m
Effective sheet width	A4 size supported, Maximum 260 mm	Maximum 484 mm, Minimum 50 mm
Maximum cutting speed	10 to 100 mm/s	600 mm/s ( in all directions )
Cutting force	230 gf	0.2 to 2.9 N ( 20 to 300 gf ) in 31 steps
Minimum character size	Approximately 5mm for alphanumeric characters ( varies depending on the medium, font, etc. )	
Mechanical resolution	0.05 mm	0.005 mm
Programmable resolution	0.05 mm	GP-GL:0.1 / 0.05 / 0.025 / 0.01 mm HP-GL™ *3 : 0.025 mm
Repeatability precision *1		0.1 mm or less per 2m
No. of pens mountable	1 pen	
Compatible cutter / Pen type	Supersteel cutter blade / General-purpose ball-point pen(only when the ball-point pen holder is used)	Supersteel blade / Water based fiber tip pen
Media types that can be cut	Film media : 0.1 mm or less in thickness ( excluding high-intensity reflective sheets )	Film media : 0.25 mm or less in thickness ( PVC, fluorescent, or reflective film, but excluding high-intensity reflective sheets )
	Kent paper up to 157 g/m²	Kent paper up to 238 g/m²
	Drawing paper *2, Postcards *2, Scrapbooking paper *2, Inkjet photo paper *2	
Interfaces	USB 2.0( full speed )	RS-232C / USB 2.0( full speed )
Command modes		GP-GL, HP-GL™ *3 ( selected on the control panel )
Display panel	None	LCD ( 16 characters x 1 row )
Rated power supply	Dedicated adapter +24 V DC( 2.0 A )	100 to 240 V AC 50/60 Hz
Power consumption	28 W( 10W during standby )	100VA
Working environment	5 to 40 , 35 to 80 % R.H.( Non condensing )	
Guaranteed operating environment	16 to 32 , 35 to 70 % R.H.( Non condensing )	
External dimensions( W x D x H )	Approx. 397 x 159 x 112 mm	Approx. 623 x 285 x 223 mm
Weight	Approx. 2.5 kg	Approx. 9.4 kg
Corresponding operating systems	Windows XP / 2000, MacOS 10.X *4	Windows XP / 2000, MacOS 9.X to 10.X *4

\*1: Varies depending on the type of Graphtec-authorized film and the cutting conditions  
\*2: Varies type of media may not be cut  
\*3: HP-GL™ is a registered trademark of Hewlett-Packard Company  
\*4: If using OSX 10.X, Cutting Master 2 is available as a plug in for Adobe Illustrator. Cutting Master is also available for the older OS 9.X, however it is only compatible with the CraftROBO Pro.

Standard accessories		
<b>Craft ROBO</b>		
AC adapter (with power cable)	Blade holder set (with blade adjustment caps)	
Ballpoint pen holder	USB cable (1.5 m)	
CD-ROM (Driver, ROBO Master, Craft ROBO controller, Cutting Master 2 for Craft ROBO, User manual)	Quick Application Guide	
Quick Start Instructions	Media Trial Kit	
Carrier Sheet		
<b>Craft ROBO Pro</b>		
AC power cable	USB cable (2.9 m)	
Cutter plunger	Carrier sheet A3 set	
Cutter blade (CB09UA)	Media cutter	
Roll media tray		
User guide CD-ROM (Driver, ROBO Master Pro, Cutting plotter controller, Cutting Master 2, Cutting Master, User manual)		
Setup manual	Usage precautions	

Supply items				
Item	Model	Description	Craft ROBO	Craft ROBO Pro
Cutter Set	CR09305E	1 holder with supersteel blade and adjustment caps		
Cutter blade	CB09UA-5	0.9 supersteel blade 5 pieces/set		
Cutter plunger	PHP32-CB09N-HS	for 0.9 supersteel blade 1 piece		
Ballpoint pen holder	CR09306E	1 ballpoint pen holder		
Carrier sheet	CR09307E	Carrier sheet A4 , 2 sheets		
Carrier sheet	CR09300E-A3	Carrier sheet A3 , 2 sheets		
Cutting mat	CR09303E	1 Cutting Mat		
Card with Craft Paper Backing	CR09001E	Card with Craft Paper Backing , 10 sheets/pack		
Card without Craft Paper Backing	CR09002E	Card without Craft Paper Backing , 15 sheets/pack		
Film Labels	CR09003E	Film Labels , 5 sheets/pack		
Vinyl Film A	CR09005E	Vinyl Film A Each , 3 sheets/pack		
Magnetic sheet	CR09008E	Magnetic sheet , 2 sheets/pack		

GRAPHTEC

Small Cutting machine

# Craft ROBO Series

Create sharp cutting edge designs  
—the Craft ROBO lets you be creative  
at home, in a store, in the office, and at school.



Brand names and product names listed in this brochure are the trademarks or registered trademarks of their respective owners.  
Specifications are subject to change without notice.

**GRAPHTEC**  
Graphtec Corporation  
503-10 Shinano-cho, Totsuka-ku, Yokohama 244-8503, Japan  
Tel : +81-45-825-6250 Fax : +81-45-825-6396  
Email : webinfo@graphtec.co.jp  
Website <http://www.graphteccorp.com>





# Create a wide variety of stickers using the precision cutting from the Craft Robo series.



## What can the Craft ROBO do?



### Cuts signage films

Lets you create actual display signs

Use the Craft ROBO to create attractive store-window display signs, car body decals with company names, and a full range of other types of signage.

### Cuts paper

Cut paper to create scrapbook titles, greeting cards, and more.

Create your own designs and cut them out using the Craft ROBO-making your own original and unique scrapbook titles and cards couldn't be easier.

### Contour-cuts color prints

Easily create stickers, paper crafts, and more

With the Craft ROBO, it's easy to make name tags for kids', unique decals, or magnetic sheets using illustrations or photographs, in addition to a host of fun paper crafts.

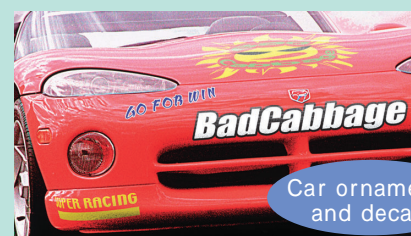
### Cuts special materials

Iron-on prints, magnetic sheets, glow-in-the-dark labels

Create original iron-on prints.

Iron-on prints cut out using the Craft ROBO provide a convenient way of making matching T-shirts for club members and teams, name tags for kids' gym wear and handkerchiefs, and items for other clothing-related uses.

### Hobbies, special-interest circles



Car ornaments and decals

### Stores, offices



Window display signs

### Educational



Directional signs, displays



Scrapbook titles



Photo cards, gift cards



Birthday cards



Paper crafts



POP displays, decals, stickers



Schedules, name-tag stickers made by magnetic sheets



Team shirts



Workwear



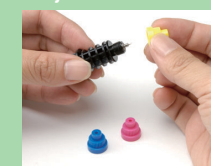
Gym wear

## How to use the Craft ROBO

### Easy contour-cutting of printed materials.



### Adjust the length of the blade to suit the thickness of the material to be cut.



#### Craft ROBO

For optimal cutting, attach the blue cap for thin media, the yellow cap for media of medium thickness, and the red cap for thick media.



#### Craft ROBO Pro

Turn the blue knob to adjust the protrusion length of the cutter blade. Cutter blade replacement is also a snap.



#### Mounting the cutter blade

Simply mount the blade holder in the cutter head. If fine adjustment is required, use the control software provided to make adjustments when cutting is performed.

Note: The Craft ROBO Pro model is shown in the photograph.

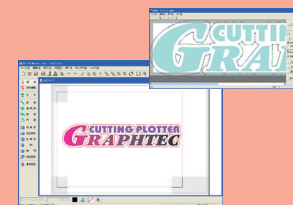
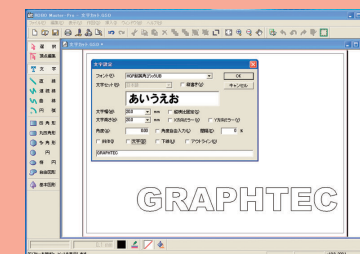
## Software

The ROBO Master software package, enabling the easy creation of your own designs, comes standard with the Craft ROBO.

ROBO Master consists of sign-creation software enabling the easy creation of illustrations as well as text-editing features, and is provided as a standard accessory to the Craft ROBO. Even first-time users will find this software easy to use, as the program walks you through all stages-from design to printing and cutting. It's also equipped with a range of functions that can be used in making stickers and labels, such as the ability to auto-trace outlines of logos or illustrations imported via scanner.

\*ROBO Master Pro, offered with the Craft ROBO Pro model.

Compatible operating systems  
Windows 2000, Windows XP  
\*USB connection only.

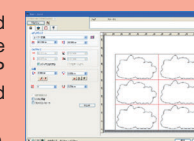


Cutting Master2 plug-in software for Illustrator and CorelDRAW is also available.

This software supports both the Mac and Windows versions of Illustrator and is therefore ideal for use by designers and illustrators. POP displays and signs that used to be outsourced can now be easily created in-house.

\*Cutting Master for ROBO, provided with the Craft ROBO.

Compatible operating systems  
Windows 2000, Windows XP, Mac OS 10.2 or later  
Illustrator Ver. 8 or higher, CorelDRAW Ver. 10 or higher.



\*An earlier version of the Cutting Master software is available for customers using Mac OS 9.x and Illustrator Ver. 8, 9, or 10. (Craft ROBO Pro only)

### Precise cutting with the registration-mark sensing function.

An automatic registration-mark sensing function for detecting printing position is built-in. High-precision cutting increases the efficiency of sticker and decal production. With the Craft ROBO Pro, the ARMS\*1 control function enables further correction of registration marks.

\*The Craft ROBO utilizes three register marks.

\*1 For further details on the ARMS function, please refer to the CE5000 Series brochure.