

# **BEST DATA**

**User's Manual**

**Model: 56NET**

# TABLE OF CONTENTS

<b>SAFETY NOTICES</b>	.....	<b>1</b>
<b>REQUIREMENTS</b>	.....	<b>1</b>
<b>INTRODUCTION</b>	.....	<b>2</b>
<b>INSTALLATION</b>	.....	<b>3</b>
<b>Product Checklist</b>	.....	<b>3</b>
<b>Ethernet Installation</b>	.....	<b>3</b>
<b>Ethernet Configuration</b>	.....	<b>3</b>
<b>Windows 98</b>	.....	<b>4</b>
<b>Windows ME</b>	.....	<b>10</b>
<b>Windows 2000</b>	.....	<b>16</b>
<b>Windows XP</b>	.....	<b>21</b>
<b>Mac OS 9.xx</b>	.....	<b>26</b>
<b>Mac OS 10.xx</b>	.....	<b>28</b>
<b>Other OS</b>	.....	<b>29</b>
<b>Hardware Installation</b>	.....	<b>30</b>
<b>CONFIGURATION</b>	.....	<b>31</b>
<b>Basic Configuration</b>	.....	<b>31</b>
<b>Modem Status / Home</b>	.....	<b>32</b>
<b>Dialup Configuration</b>	.....	<b>33</b>
<b>Advanced Dial-up</b>	.....	<b>36</b>
<b>Save Settings / Reboot</b>	.....	<b>37</b>
<b>BROWSER SETUP</b>	.....	<b>38</b>
<b>TROUBLESHOOTING</b>	.....	<b>43</b>
<b>TECH SUPPORT</b>	.....	<b>45</b>

## **Safety Notices**

### **To avoid a shock hazard**

Do not attempt installation of this product during an electrical storm.

The power cord to your computer equipment must be connected to a properly grounded receptacle.

### **To prevent static discharge**

Discharge static electricity from your body prior to installation of this product. This can be accomplished by touching an unpainted part of your computers case (usually on the rear side of the computer case) .

## **Hardware Minimum System Requirements**

Microsoft Windows 98, ME, 2000, XP  
Apple Mac OS 9.x and higher  
Other Operating Systems \*  
Compatible ISP \*\*

\* This product can function with other operating systems since the 56NET is completely hardware controlled and there is no software needed to installed into the operating system. The basic product requirement is an operating system capable of networking through the TCP/IP protocol and a web browser that can handle frames.

\*\* This product will not function with some ISP's. The type of ISP's this product will not function with are the type which require you to install a piece of software (typically a 3<sup>rd</sup> party dialer) on your system. NetZero is an example of such an ISP. AOL also falls into this category and will not function with the 56NET modem.

## INTRODUCTION

Thank you for purchasing the Best Data 56NET modem / router. We hope the product will give you great service for years to come.

With the 56NET you have the power of both a 56K dialup modem combined with a 10/100baseT network router.

The 56K analog modem allows you to connect with most ISP's. Any ISP that is capable of being setup without installing any additional software into the operating system should qualify for use with the 56NET.

The router enables you to connect two computers together for network access. The router will assign a DHCP lease to each computer connected to the LAN ports on the 56NET. You can optionally connect a network hub or switch to one of the two LAN ports on the 56NET if you have more than 2 computers in your network. The router will allow all computers connected through the LAN ports to share the Internet connection of the 56K modem that is built into the router.

You have the ability to share files between any 2 systems or more\* with the 56NET. Any systems that obtain a DHCP lease from the 56NET can setup sharing on their systems where you can share specific folders for others to see.

In addition to file sharing the 56NET can share a printer\*\* on one system with any other system connected through the 56NET.

Please carefully read through this manual and follow each step exactly as instructed. The following page begins walking you through the installation process. At the end of each set of steps you will be instructed which chapter and page to turn to next. If you run into any issues please follow the steps listed within the troubleshooting section of this manual.

*\* More than 2 computers can be connected through the 56NET. You will need to have a 10/100 hub or switch connected to one of the LAN ports on the 56NET.*

*\*\* Most any printer can be shared with the 56NET. The printer **must** support network printing. Some of the newer printers on the market no longer support network printing. Please check with your printer manufacturer if you are not sure if network printing is supported.*

## INSTALLATION

Do **NOT** connect the 56NET to your computer until instructed. Before connecting the 56NET to your equipment there are some steps that must be performed. Please use the following guidelines that best apply to your environment.

Before you begin you should make sure that you have all of the required materials needed to setup your network. Check each item in the list for confirmation.

### 1. Product Installation Checklist

Please ensure that you have all of the items in the following checklist available to you prior to installation.

- 56NET Modem + Router
- AC Power Adapter
- Quick Start Guide
- Ethernet Adapter \*\*
- Ethernet Cable
- Phone Cable
- Operating System CD

\*\* The 56NET requires that each system you plan on using the device with already has an Ethernet device installed. The 56NET does not come bundled with an Ethernet device. The Ethernet device can be either a 10 or 10/100baseT network adapter in the form of an ISA card, PCI card, or USB dongle. Please seek more information from your local computer retailer if you do not yet have an Ethernet device for your system(s).

### 1. Ethernet Adapter Installation

If you already have an Ethernet adapter and its driver installed into the operating system you can skip this step. If you do not yet have a Ethernet adapter installed in your system you will first need to install the Ethernet adapter along with any drivers that it may require. Once you are certain that your Ethernet device and drivers are installed you can continue to step 3. Please consult your Ethernet adapter documentation / manufacturer for specific installation instructions for their Ethernet adapter.

### 2. Ethernet Adapter Configuration

Before connecting the 56NET to your first system it is very important that you perform the following network configuration steps from within your operating system. Procedures are listed for every popular operating system being used in today's computer world. Go to the configuration steps for your particular operating system by referring to the page numbers listed below.

<b>Windows 98</b>	<b>PAGE 4</b>
<b>Windows ME</b>	<b>PAGE 10</b>
<b>Windows 2000</b>	<b>PAGE 16</b>
<b>Windows XP</b>	<b>PAGE 21</b>
<b>Macintosh OS 9.xx</b>	<b>PAGE 26</b>
<b>Macintosh OS 10.xx</b>	<b>PAGE 28</b>
<b>Other Operating Systems</b>	<b>PAGE 29</b>

## Windows 98 Ethernet Adapter Configuration

Follow the steps listed below for Windows 98 computers to ensure your network card is correctly configured for use with the 56NET product. Do **NOT** attach the 56NET to your computer until instructed to in the next chapter.



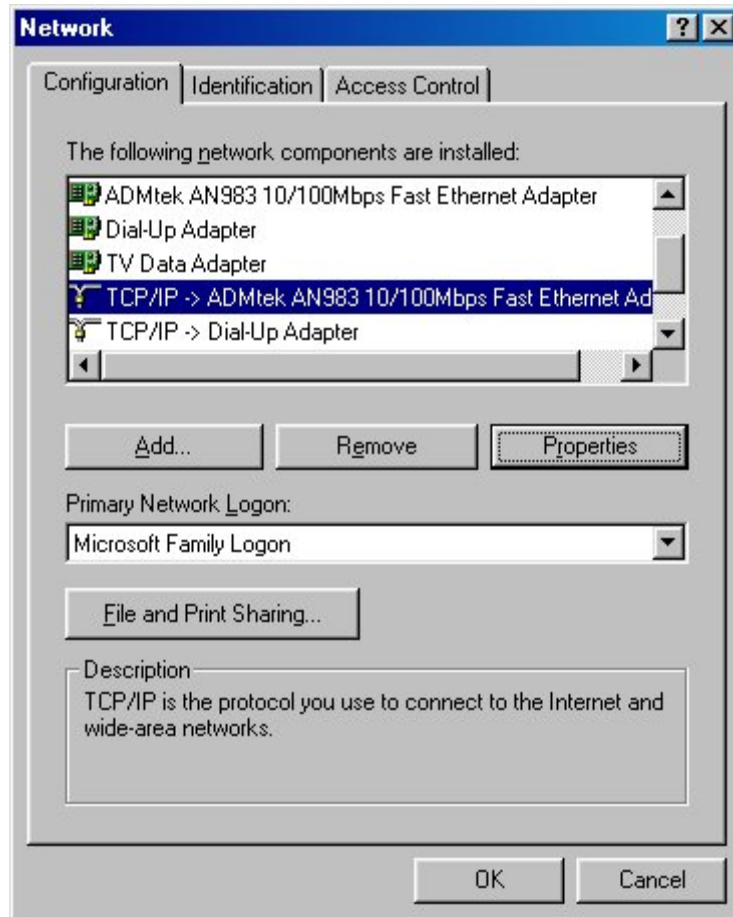
1. Locate the Network Neighborhood icon on your desktop.



2. Click the right mouse button on the Network Neighborhood icon, and left click Properties when the sub-menu appears. The Network Properties dialog will appear.

**(Continued on the next page)**

## Windows 98 Ethernet Adapter Configuration (continued)



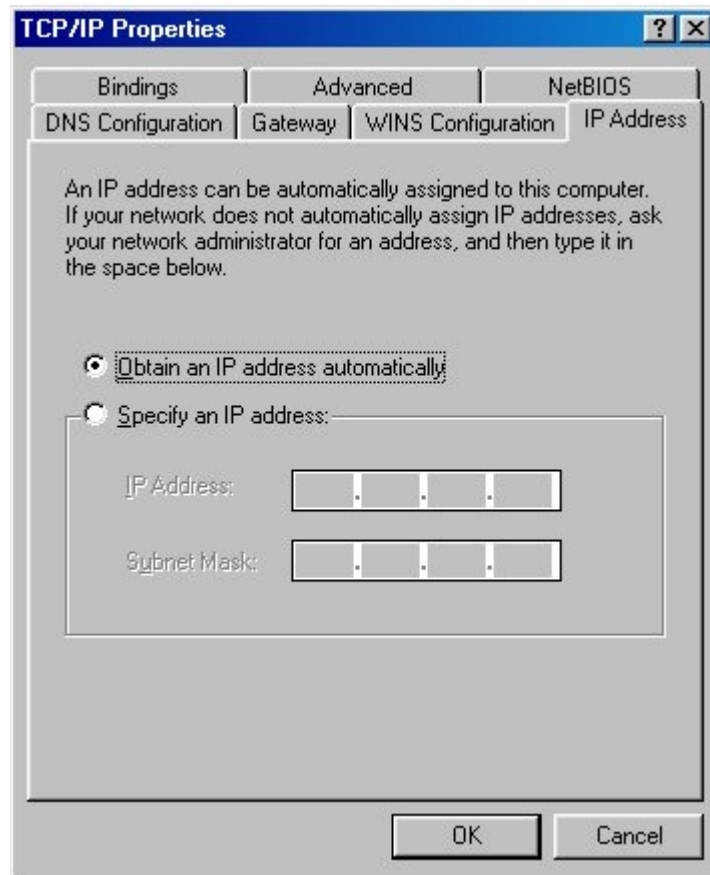
3. In the *Network Properties* dialog locate *TCP/IP* in the list. If there is more than 1 listing for *TCP/IP* you will need to identify which one belongs to your Ethernet adapter.

**Example: ADMtek AN983 10/100 Fast Ethernet Adapter -> TCP/IP**

Click the listing of **TCP/IP** that belongs to your *Ethernet adapter* and click the **Properties** button. The *TCP/IP properties* will appear.

(Continued on the next page)

## Windows 98 Ethernet Adapter Configuration (continued)

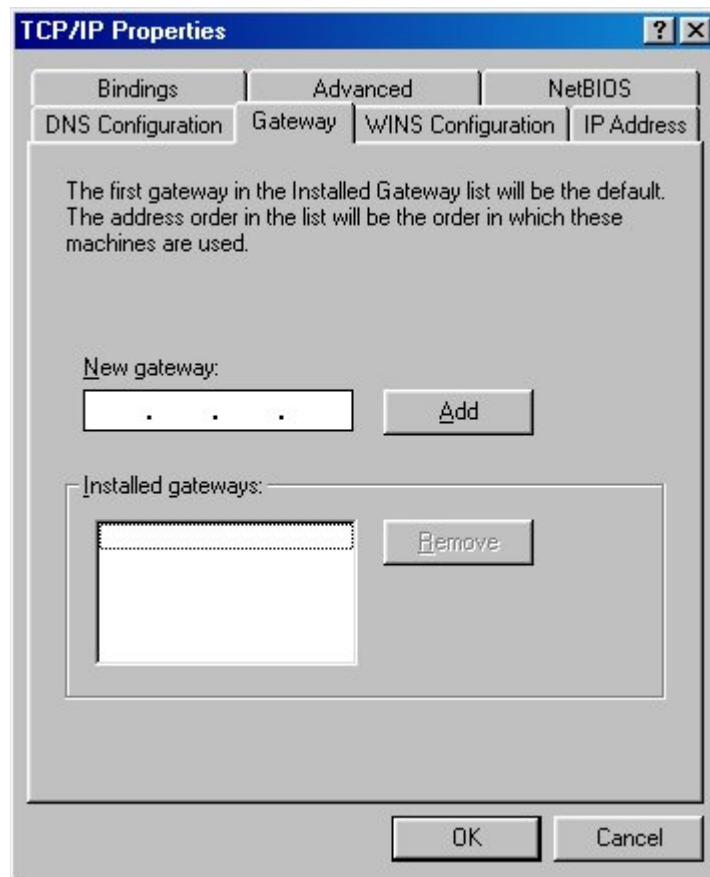


- a. Select the option to **Obtain an IP Address Automatically**.

(Continued on the next page)



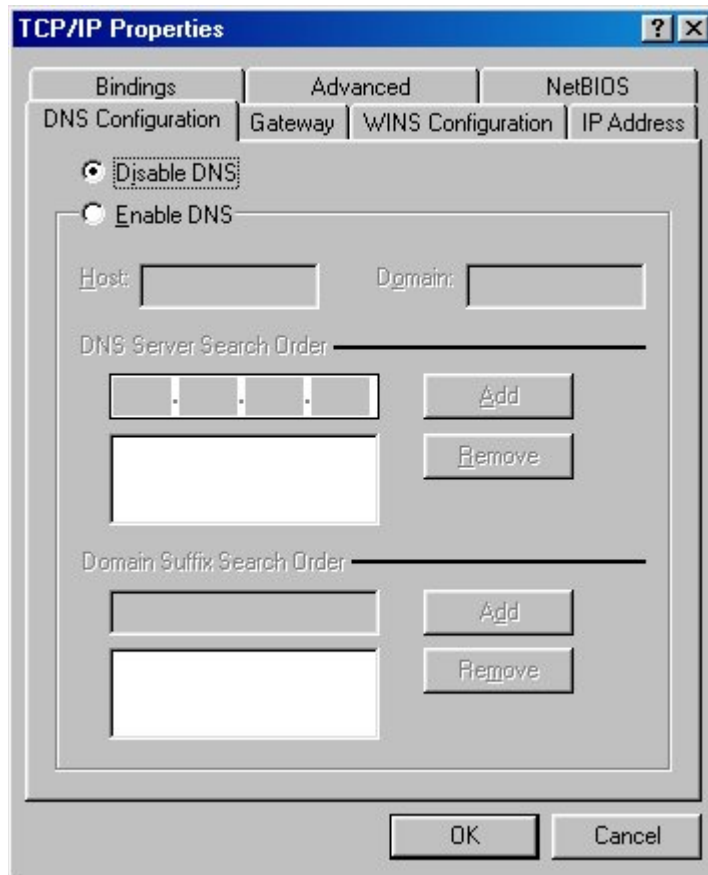
## Windows 98 Ethernet Adapter Configuration (continued)



- b. Click the **Gateway** tab. If there are any numbers listed in the *Installed gateways* box please select each one individually and click the **Remove** button.

(Continued on the next page)

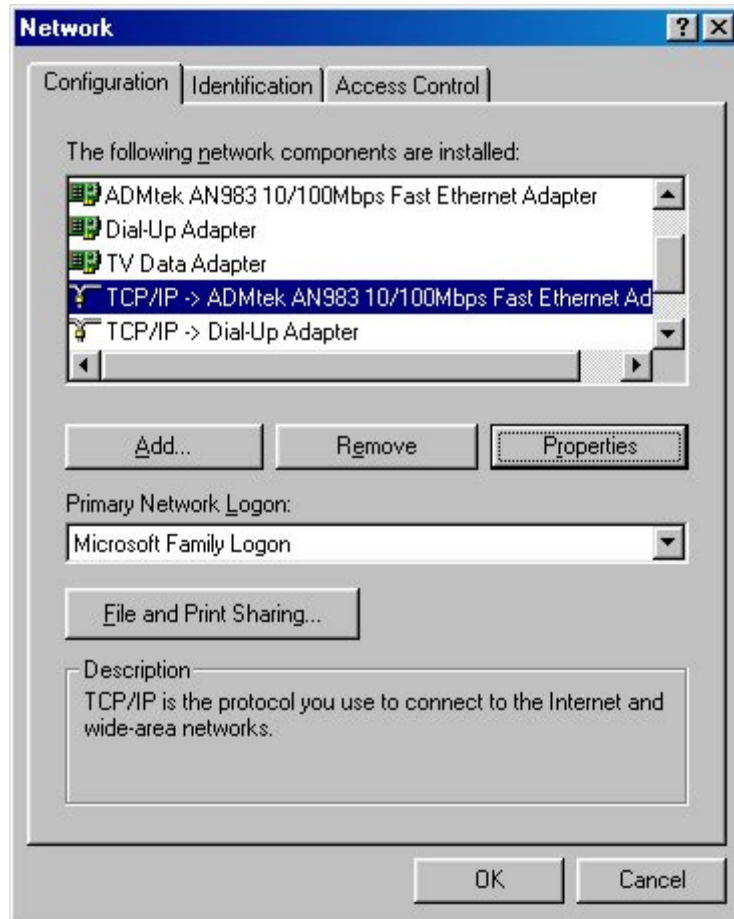
## Windows 98 Ethernet Adapter Configuration (continued)



- c. Click the **DNS Configuration** tab. Click the **Disable DNS** radio button.
- d. Click **OK** to accept the settings.

(Continued on the next page)

## Windows 98 Ethernet Adapter Configuration (continued)



- a. Click **OK** to accept the settings.



- b. Click **Yes** to restart your computer.

This concludes the Windows 98 preparation for the 56NET.  
Please continue to the next section, **Hardware Installation**, located on page 30.

### Windows ME Preparation

Follow the steps listed below for Windows 98 computers to ensure your network card is correctly configured for use with the 56NET product. Do **NOT** attach the 56NET to your computer until instructed to in the next chapter.



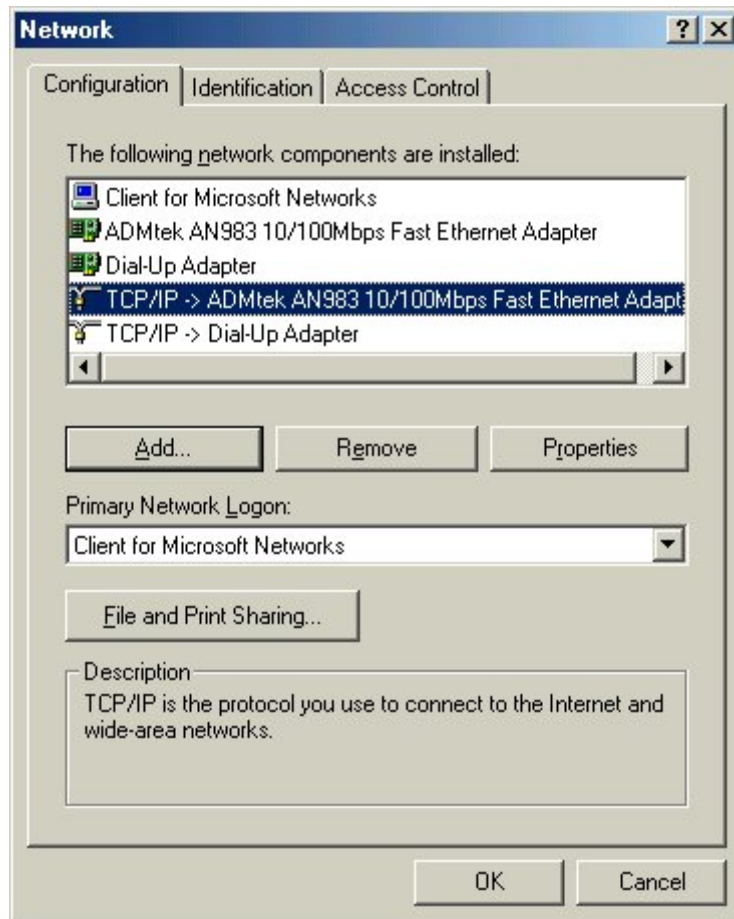
1. Locate the My Network Places icon on your desktop.



2. Use the **RIGHT** mouse button and click the **My Network Places** icon. A sub-menu will appear. Use the **LEFT** mouse button and click **Properties**. The **Network Properties** dialog box will appear

(Continued on the next page)

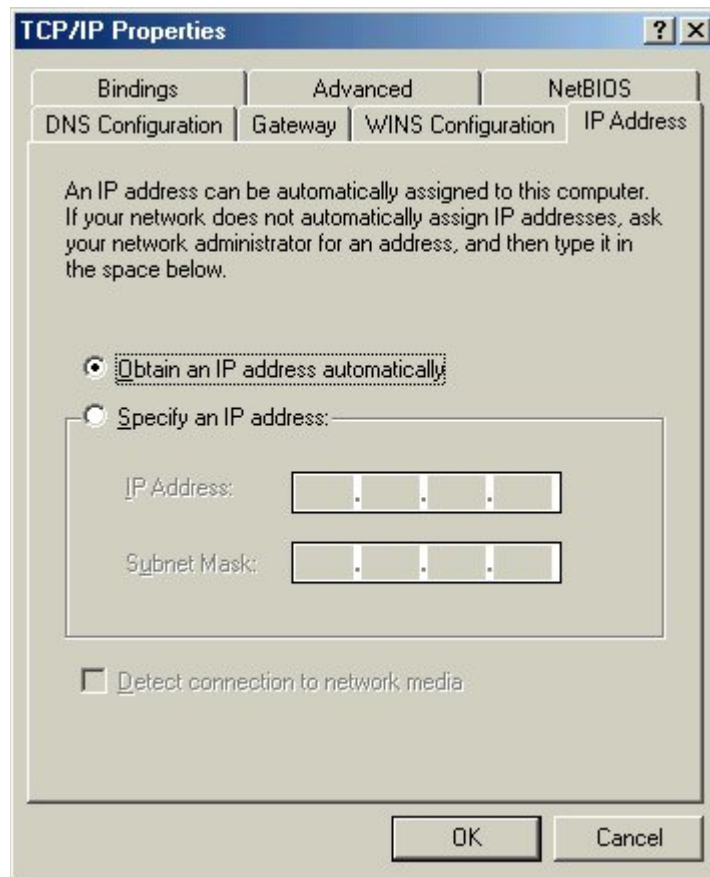
## Windows ME Preparation (continued)



3. Locate *TCP/IP* in the list. If there is more than 1 instance of *TCP/IP* make sure to locate the *TCP/IP* that is listed next to your *Ethernet adapter*. Use the **LEFT** mouse button and single click the correct *TCP/IP* listing. The item will now be highlighted. Click the **Properties** button. The *TCP/IP properties* dialog box will appear.

(Continued on the next page)

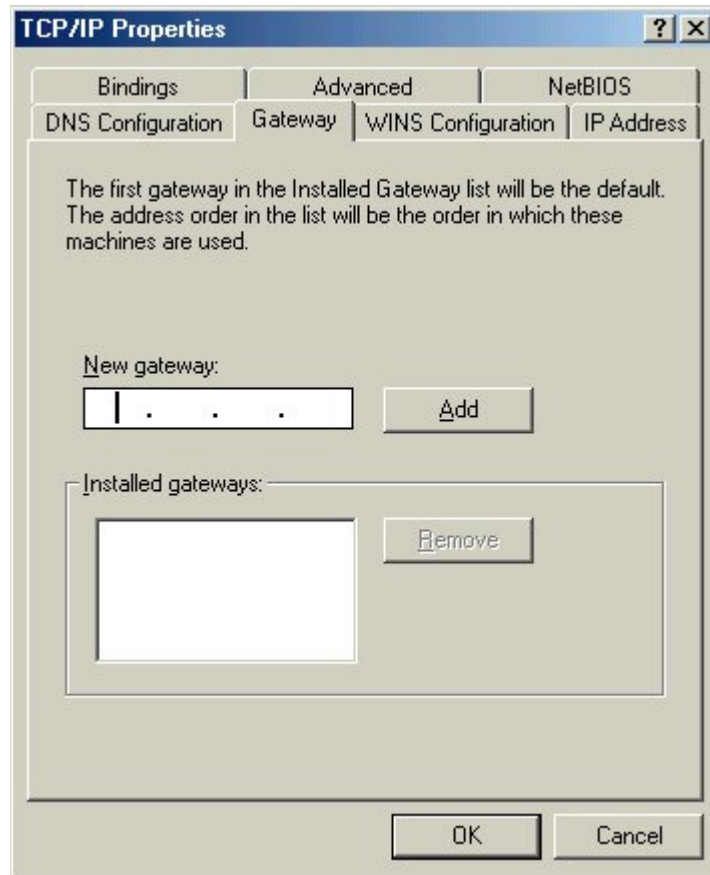
## Windows ME Preparation (continued)



4. Under the *IP Address tab* select the option that reads **Obtain An IP Address Automatically**. Click the **Gateway** tab.

(Continued on the next page)

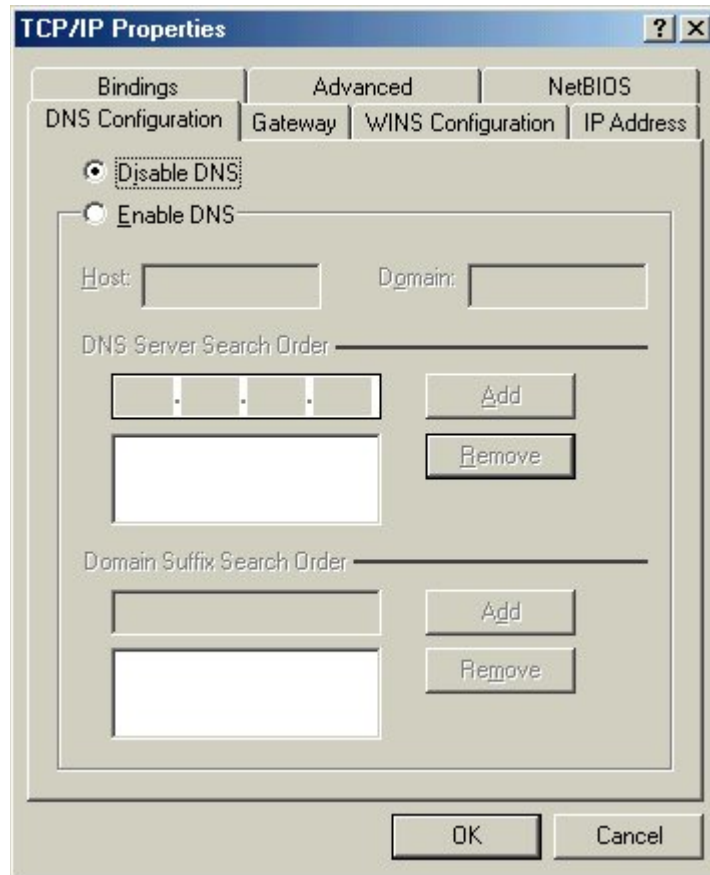
## Windows ME Preparation (continued)



5. Make sure there are **not** any IP addresses listed under *Installed Gateways*, otherwise highlight each address *separately* and click the **Remove** button until the list is blank. Click the **DNS Configuration** tab. The DNS configuration will be displayed.

(Continued on the next page)

## Windows ME Preparation (continued)

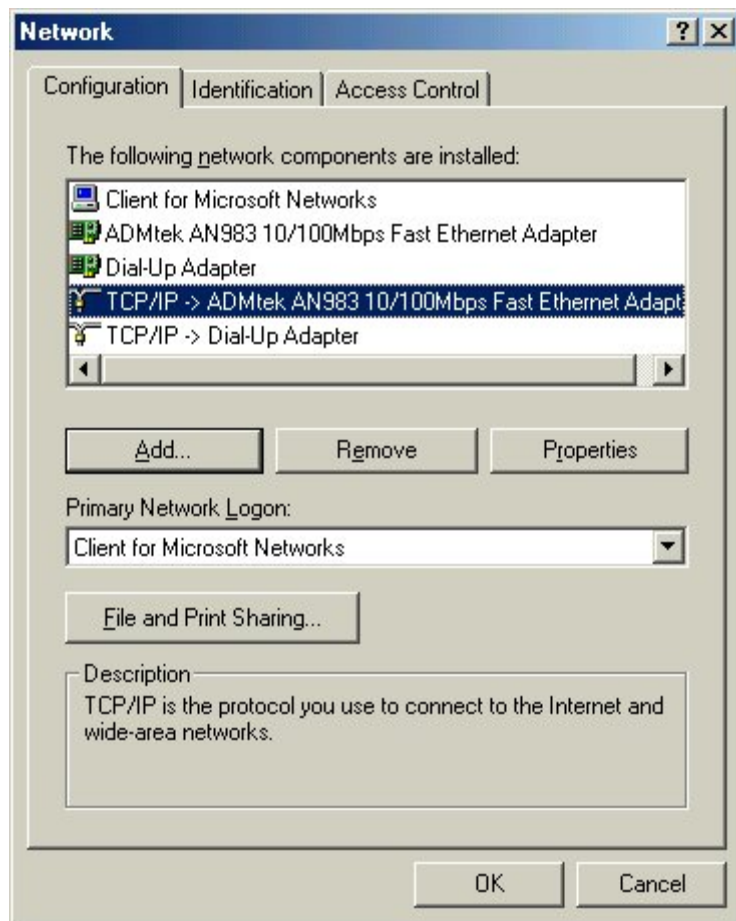


6. Click the **Disable DNS** option and click **OK** to accept the settings

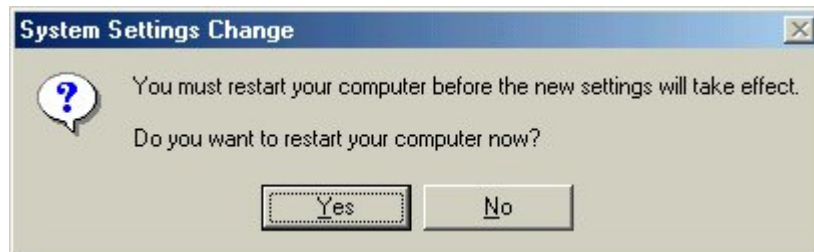
(Continued on the next page)



## Windows ME Preparation (continued)



7. Click **OK** to accept all of the recent modifications.

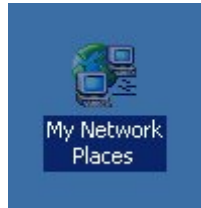


8. Click **YES** to restart Windows.

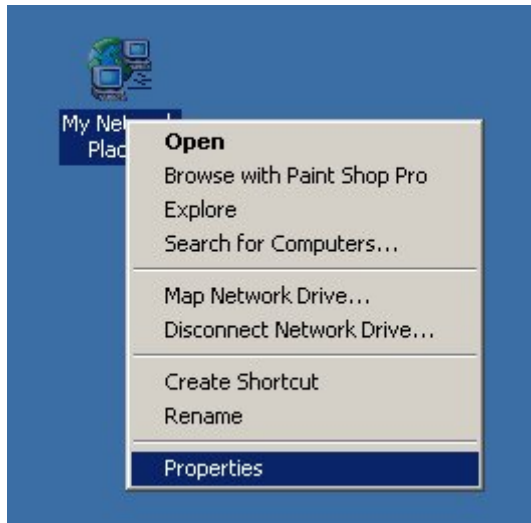
This concludes the Windows ME preparation for the 56NET.  
Please continue to the next section, **Hardware Installation**, located on page **30**.

## Windows 2000 Preparation

Follow the steps listed below for Windows 2000 computers to ensure your network card is correctly configured for use with the 56NET product. Do **NOT** attach the 56NET to your computer until instructed to in the next chapter.



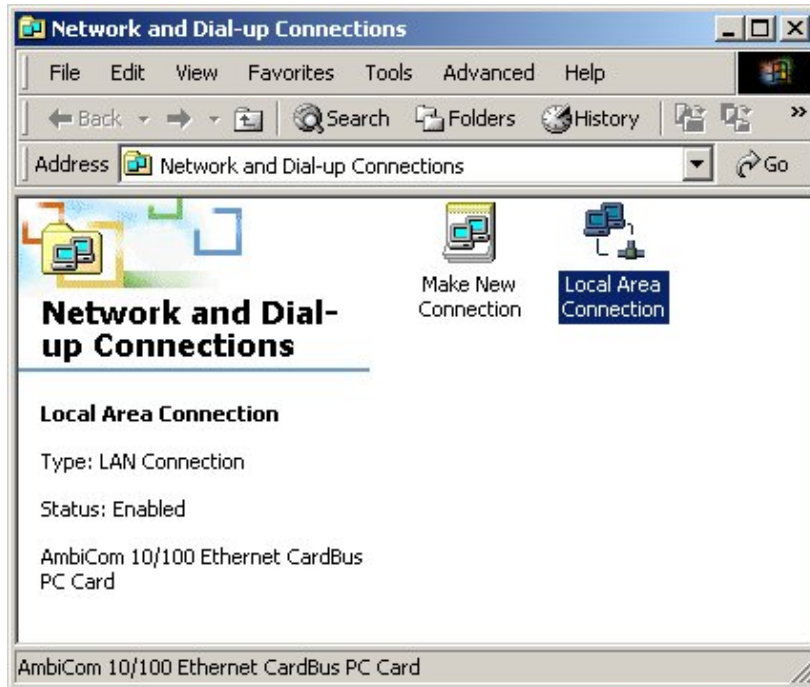
1. Locate the **My Network Places** icon on your desktop.



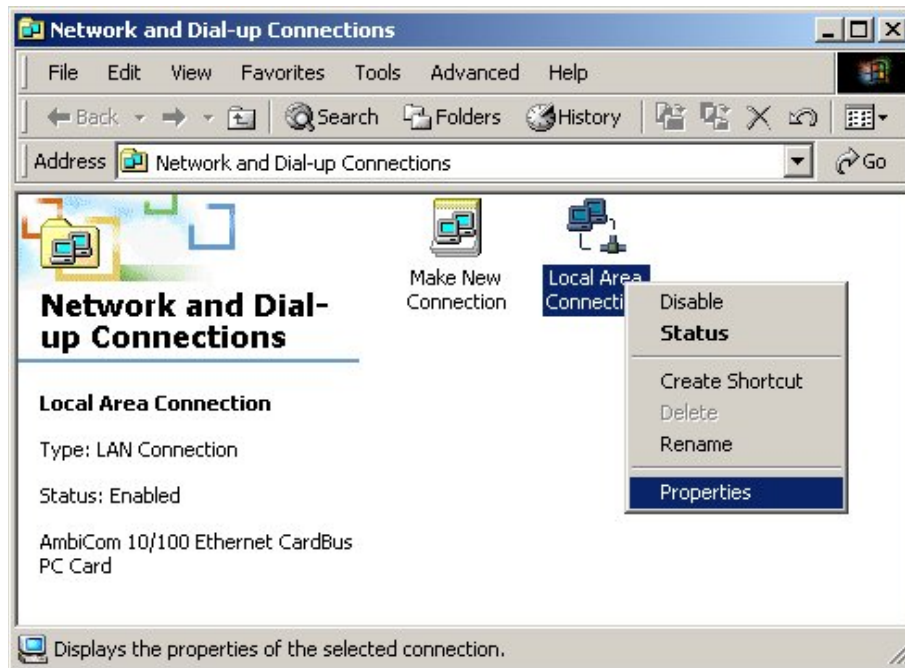
2. *Right click* the **My Network Places** icon and *left click* **Properties** as shown in the illustration above. The Network and Dial-Up Connections will appear.

(Continued on the next page)

## Windows 2000 Preparation (continued)



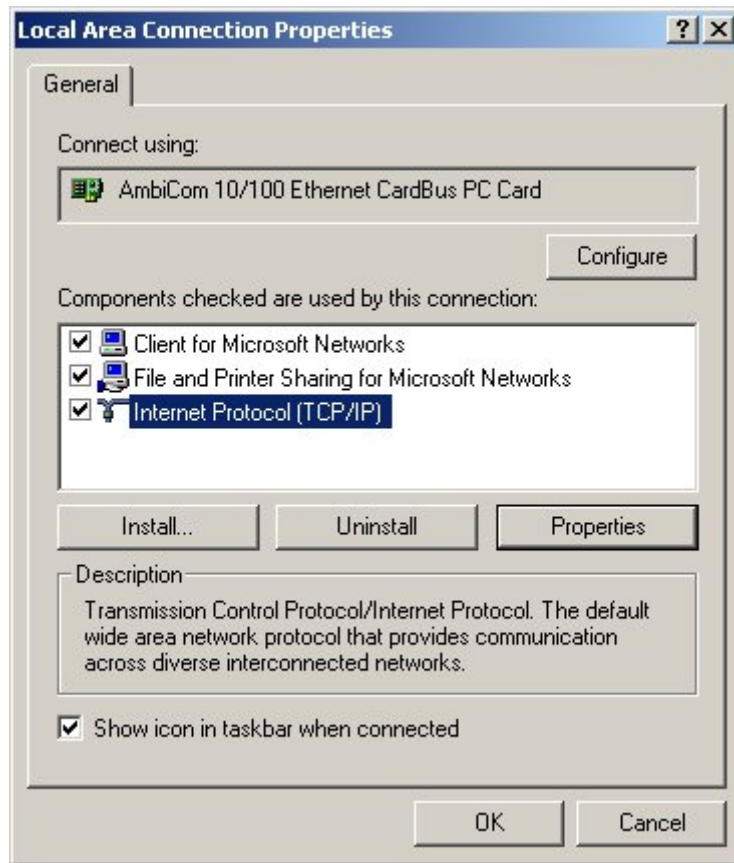
3. Locate the Local Area Connection icon for your Ethernet device. When you highlight the icon you can see a description of the icon in the left frame as pictured above. In this instance the Ethernet device was a AmbiCom 10/100 Ethernet CardBus PC Card.



4. *Right click* the icon that belongs to your Ethernet device and *left click* **Properties**.

(Continued on the next page)

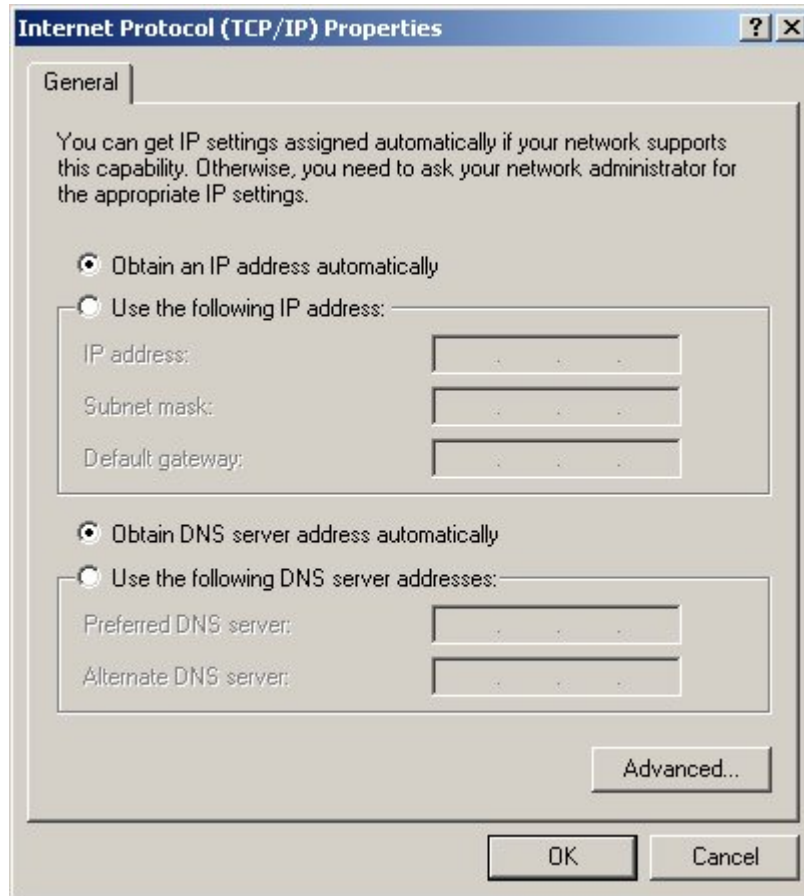
## Windows 2000 Preparation (continued)



5. Locate **Internet Protocol (TCP/IP)** in the list and *single left click* the line, making sure **not** to uncheck the checkbox.
6. Click the Properties button.

(Continued on the next page)

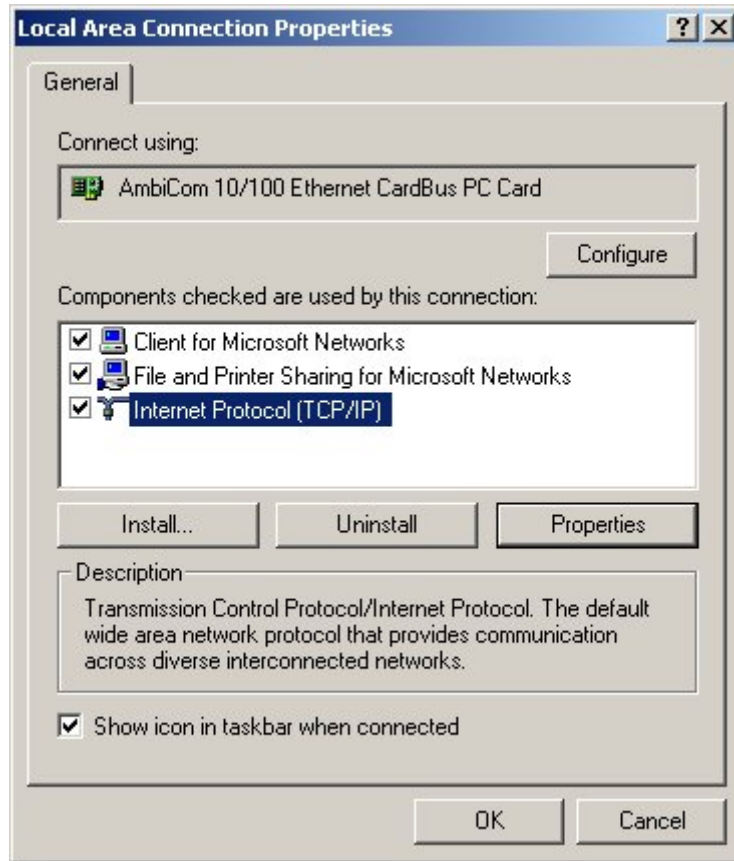
## Windows 2000 Preparation (continued)



7. Select **Obtain an IP address automatically**. Select **Obtain DNS server address automatically**.
8. Click **OK** to accept the settings.

(Continued on the next page)

## Windows 2000 Preparation (continued)



9. Click **OK** to accept the changes. This may take a minute. Don't be alarmed if the box does not disappear immediately. Once the box disappears you can continue the installation.

This concludes the Windows 2000 preparation process.

Please continue to the next section, **Hardware Installation**, located on page **30**.

## Windows XP Preparation

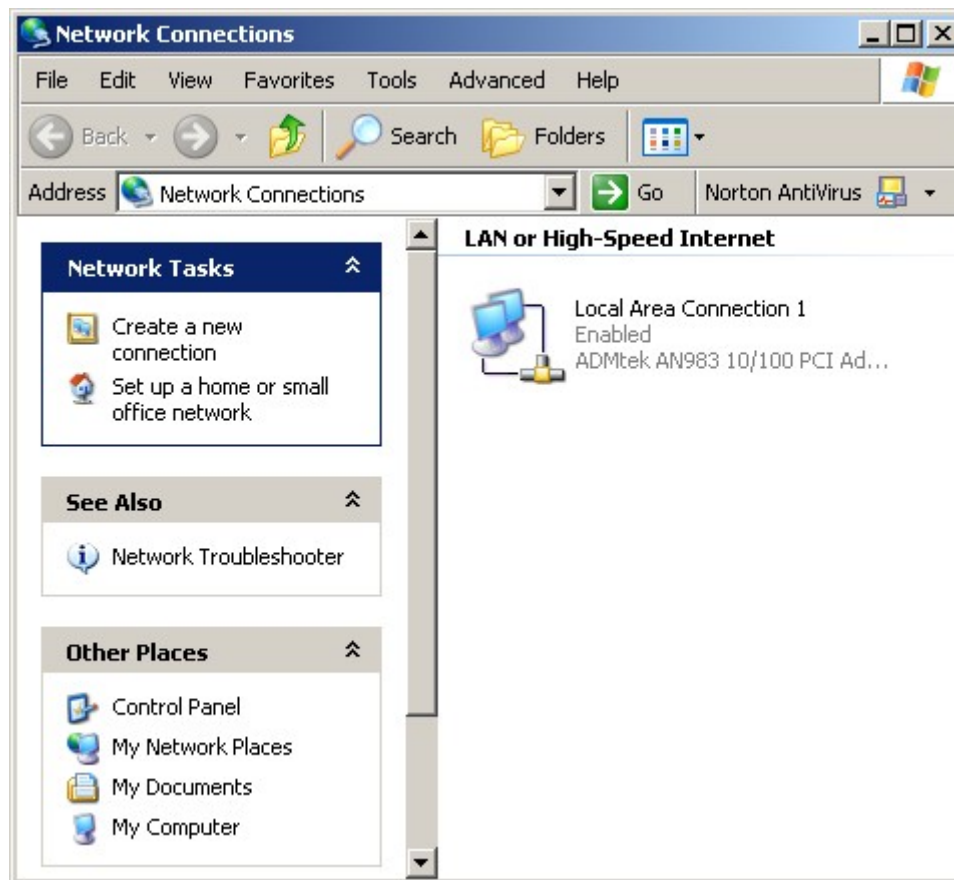


1. Click the Start button and locate My Network Places. Click the **RIGHT** mouse button on **My Network Places** and left click **Properties**. The Network Connections box will appear.

*Note: Depending on how your Windows XP system is setup, your start menu may look slightly different than what is shown in the example. You can also use the **My Network Places** icon on the desktop instead of the one in the start menu.*

**(Continued on the next page)**

## Windows XP Preparation (continued)

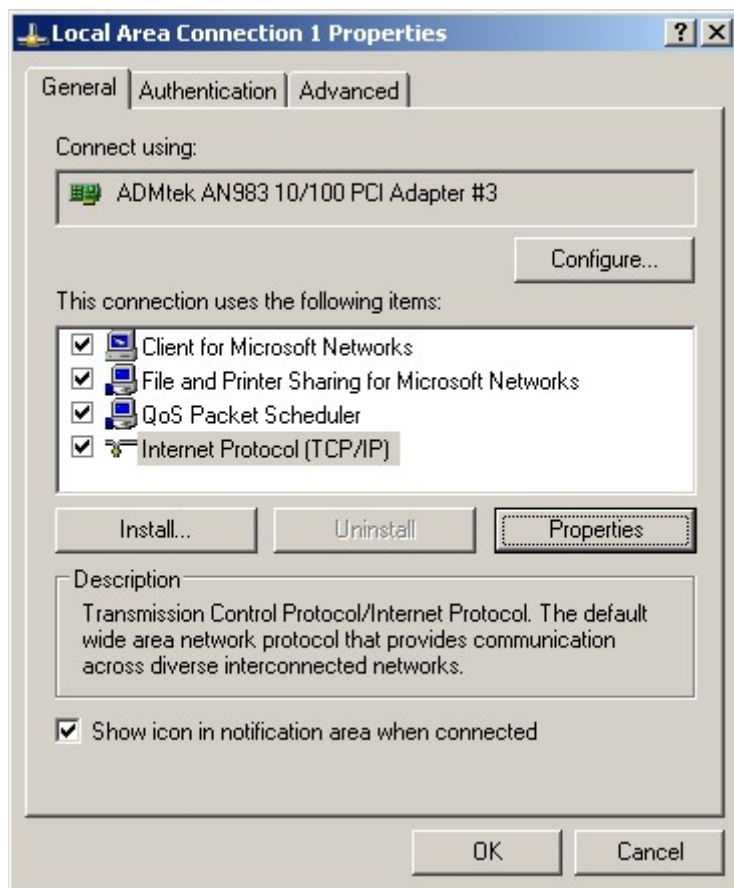


2. Locate the Local Area Connection icon that resembles your Ethernet device. The name of your ethernet device will be printed just below "Local Area Connection". In this example the ethernet device is a ADMtek AN983 10/100 PCI adapter. Use the RIGHT mouse button and click the Ethernet device. A sub-menu will appear. Use the LEFT button and click Properties. The properties for your Ethernet device will appear.

(Continued on the next page)



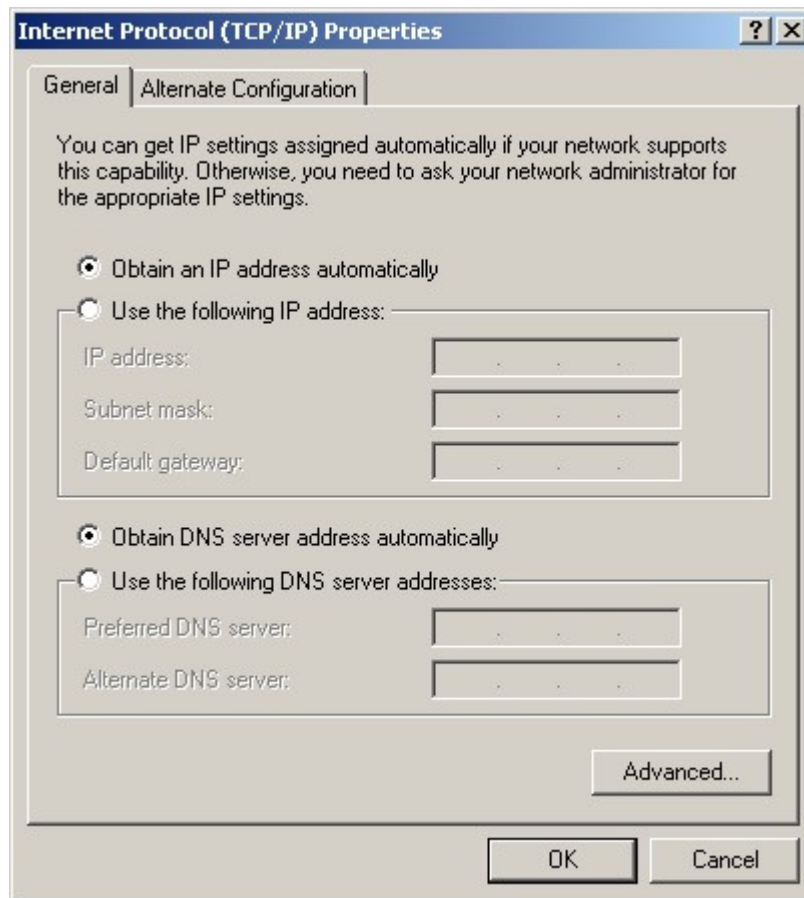
## Windows XP Preparation (continued)



3. Highlight Internet Protocol TCP/IP and click Properties (making sure **NOT** to uncheck the box next to TCP/IP). The TCP/IP properties will appear.

(Continued on the next page)

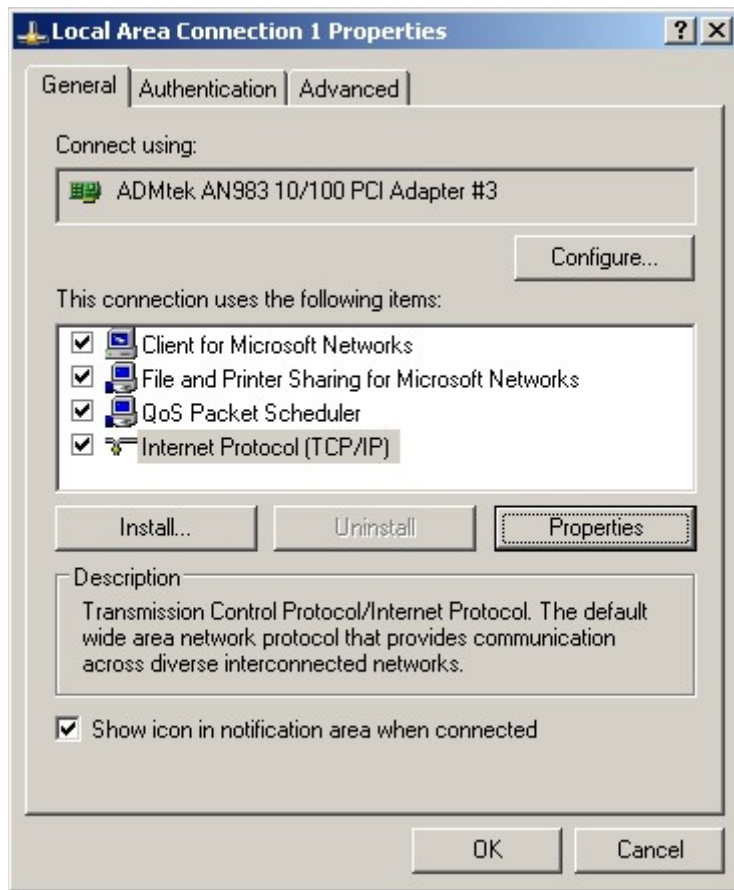
## Windows XP Preparation (continued)



4. Select the option to **Obtain An IP Address Automatically**. Select the option to **Obtain DNS Server Address Automatically**. Click **OK** to accept the settings.

(Continued on the next page)

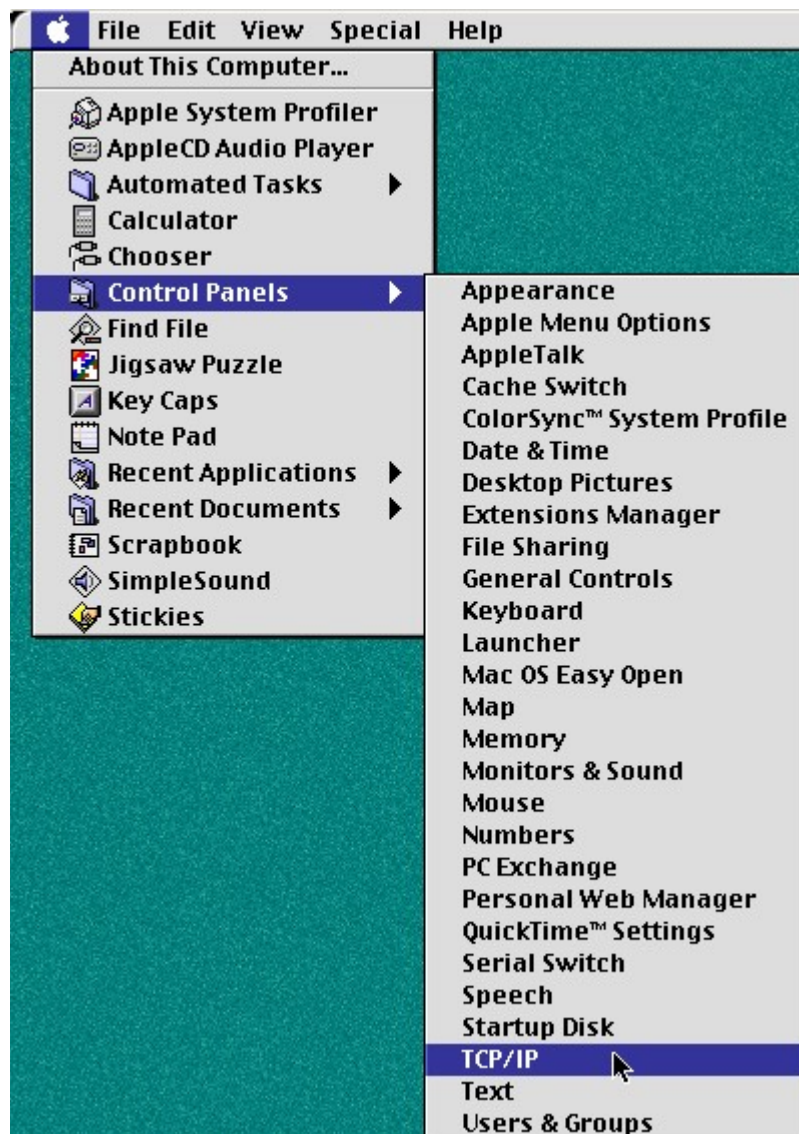
## Windows XP Preparation (continued)



5. Click **OK** to close the Local Area Connection settings.

This concludes the Windows XP system preparation for the 56NET.  
Please continue to the next section, **Hardware Installation**, located on page 30.

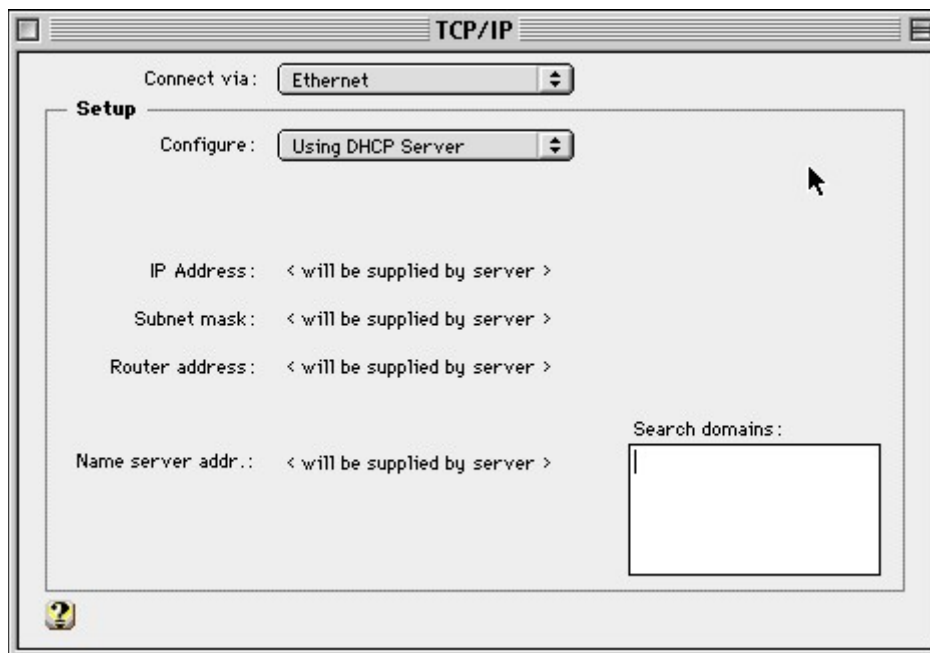
## Apple Macintosh OS 9.xx Preparation



1. Click the **Apple** menu. Select **Control Panels**, then select **TCP/IP**.

(Continued on the next page)

## Apple Macintosh OS 9.xx Preparation (continued)



2. Click the **Connect VIA** pull down menu and *select Ethernet*.
3. Click the **Configure** menu and *select Using DHCP Server*.

This concludes the Mac OS 9.xx system preparation for the 56NET.  
Please continue to the next section, **Hardware Installation**, located on page **30**.

### **Apple Macintosh OS 10.xx Preparation**

1. Click the Apple menu and click System Preferences.
2. Double click the Network icon.
3. Look for a dropdown menu titled Show. Select your Ethernet adapter from this menu.
4. Look for a dropdown menu titled Configure. Select Using DHCP from this menu.
5. Click the Apple Now button to complete the configuration.

## **Other Operating Systems Preparation**

The 56NET will work with virtually any operating system that is capable of using the TCP/IP protocol routed through a Ethernet device.

Since there are many operating systems out there besides Windows or Mac Os that fit into this description that it is too difficult to produce instructions for all remainder operating systems. We feel that only advanced users are seriously using other operating systems, and hopefully this information is all you will need to properly configure you system for use with the 56NET.

1. You need to configure your TCP/IP settings for DHCP.
2. You need to configure your web browser for LAN access.

Once your system is configured to meet the above requirements you can continue to the next section, **Hardware Installation**, located on page **30**.

## **HARDWARE INSTALLATION**

1. Follow the steps below to ensure proper hardware installation.
2. Connect the AC power adapter to a power receptacle.
3. Connect the remaining end into the power connector located on the rear of the 56NET.
4. Connect an Ethernet cable to the Ethernet device on your system (can be a PCI Ethernet or USB Ethernet device).
5. Connect the remaining end of the cable into either of the 2 RJ-45 connectors on the back of the device.
6. Power on your computer and let the operating system boot-up.
7. Continue to the 56NET configuration on page 31.



## CONFIGURATION

### Basic Configuration

The Basic Configuration is required for the first time setup of the 56NET modem. This guide will assist you in configuring the unit for the first time use.

#### Logon to the 56NET Using the provided 56NET Configuration CD

1. Insert the 56NET Configuration CD into your CD-ROM drive and wait for the auto-run menu to appear.

**NOTE 1:** If the menu does not automatically appear it is likely that your system is not configured for auto-run mode. You can alternately *double click* the **My Computer** icon, *double click* the **CD-ROM** icon, and *double click* the **56NET** (or 56NET.EXE) icon to access the menu.

**NOTE 2:** If you receive a DLL error regarding a file missing or out of date it is due to your Windows files not being up to date. This will usually only happen on Windows 98 systems that have not had any Windows updates installed. To correct this problem you can *double click* the **My Computer** icon, *RIGHT click* the **CD-ROM** icon, *left click* **OPEN**, and *double click* the **RUNTIME** (or RUNTIME.EXE) icon. This will bring your Windows system files up to date. You will be asked to restart the computer after the update it complete. After restarting please return to and complete step 1.

2. Click the **Configure 56NET** button. Your default web browser will appear with the 56NET configuration page visible. Continue to the next page in this manual.

#### Logon to the 56NET without using the 56net Configuration CD

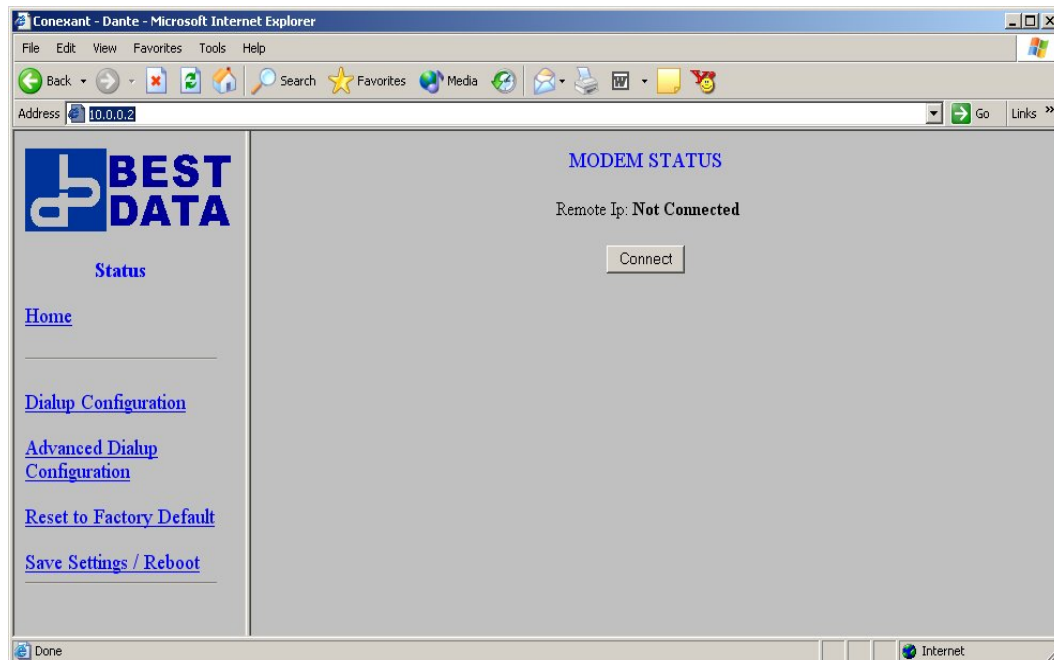
1. You can alternately open your web browser and type: 10.0.0.2 in the address bar to access the configuration. A logon box will appear. Type **admin** into the *User Name* field. Type **epicrouter** into the *Password* field. These are the default username and password fields used to logon to the 56NET configuration pages. You can optionally check the **Remember my password** check box if you are not located in a secure environment such as a residence. Click **OK** when you are ready to proceed.

**Note:** If the above logon box does not appear you may need to adjust the setting of your Ethernet device forcing a 10baseT connection instead of auto-sense. Please consult the troubleshooting section for specific instructions.

## Modem Status / Home

The *Modem Status* screen will be displayed. After you complete this installation you will be able to force the modem to Connect & Disconnect the connection to your ISP from this screen by clicking the **Connect** or **Disconnect** button. You can later get back to this screen by clicking the **Home** button.

You should now be logged in as administrator and the configuration screen should be visible. The following instructions will assist you with the completing the modem / router configuration. As you complete each screen we recommend clicking the File / Print option to make a hard copy backup of your configuration. The configuration instructions begin on the next page.



## Dialup Configuration

Click the Dialup Configuration link. The following screen will appear. Each feature is documented on the pages that follow.

The screenshot shows a Microsoft Internet Explorer browser window displaying the Best Data 56Net web interface. The address bar shows <http://10.0.0.2/>. The page title is "Best Data - 56Net - Microsoft Internet Explorer".

The main content area is titled "Dialup Configuration" and contains the following fields and options:

- Outside Line Prefix:
- Call Waiting Prefix:
- Number To Dial:
- Secondary Number To Dial:
- Username:
- Password:
- Please re-type password to confirm:
- Disconnect Timeout:  minutes (Max:545)
- Dial Attempts:

Below these fields is a section titled "General Settings" with the following options:

- Country Selection:
- Dial On Demand
- Automatic Reconnect
- Enable Quick Connect
- Check here to enable Failsafe Mode (V.34). \*\*Note, Failsafe mode will disable Quick Connect settings.
- Check here if you do not have Touch Tone service.
- Check here if you have voicemail on this phone line.

At the bottom of the General Settings section are "Submit" and "Reset" buttons.

Below the General Settings section is a link for "Advanced Dialup Configuration".

A note at the bottom states: "Settings need to be saved to Flash and the system needs to be rebooted for changes to take effect." Below this note is a "Save Configuration" link.

## Dialup Configuration (Continued)

Each feature listed within the Dialup Configuration screen is documented below. Please ensure each field is filled in properly before using the 56NET product.

1. **Outside Line Prefix**

If your location requires that you dial a special code to obtain an outside line you can place the code in the Outside Line Prefix field and the modem will automatically dial the code each time a call is placed with the modem. **Example: 9,**

2. **Call Waiting Prefix**

If you have call waiting service on your phone line and would like to disable the service, you can type the required code into this field followed by a comma.

**Example: \*70,**

**NOTE:** Please check with your phone company to find out the correct code to disable the call waiting service. \*70 is the most common code for most phone companies.

3. **Number To Dial**

Type the telephone number that you use for your connection to your ISP. Please consult with your ISP for a list of access numbers for your local area.

4. **Secondary Number To Dial**

If there is a second or alternate number that you use for your connection to your ISP please type it into this field.

5. **Username**

Type the username that you have been assigned by your ISP. Please consult with your ISP if you do not have this information on hand.

6. **Password**

Type the password that you have been assigned by your ISP. Please consult with your ISP if you do not have this information on hand. Please retype your password in the next field that follows the password field.

7. **Disconnect Timeout**

Type the number of seconds you would like the modem to wait before automatically disconnecting from your ISP when the connection is idle. Type the number **0** into this field if you would like to disable this feature (meaning that the modem will never disconnect from your ISP until requested by the configuration utility).

8. **Dial Attempts**

Select the number of consecutive calls that you would like the modem to make to your ISP in case there is a failure in the connection. A failure could be due to a busy signal, the remote modem not answering, or possibly line trouble. If the number of consecutive calls is exceeded, the modem will no longer dial out until another request has been made from a web browser or from the Connect button within the configuration utility.

## Dialup Configuration – General Settings

### 1. Country Selection

Please make sure to select the correct country selected for the location that modem is being used at.

### 2. Dial On Demand

Check this box if you would like the modem to automatically connect to your ISP when there has been a request to the WAN (Wide Area Network) from a web browser.

### 3. Automatic Reconnect

Select this check box if you want the modem to automatically reconnect to your ISP in the event that the connection is dropped. This setting will ensure the modem is always connected to your ISP.

### 4. Enable Quick Connect

Check the Enable Quick Connect box if you are connecting to a V.92 compatible ISP which supports the Quick Connect V.92 feature.

### 5. V.34 Failsafe Mode

Select this option if your phone line conditions are not able to properly handle a V.90/V.92 connection. This will force the modem to connect at rates of 33,600 or lesser. Selecting V.34 mode disables the quick connect feature.

### 6. Check here if you do not have touch tone service

Check this box if you do not have touch tone dialing enabled on your phone line. This will force the modem to use the pulse dialing method.

### 7. Check here if you have Voicemail on this phone line

Check this box if your phone line has voicemail setup through your telephone company. Checking this option will cause the modem to pause briefly before dialing any numbers to take account for the extra tone that most voicemail systems put on your phone line which alert you of new messages.

### 8. Submit

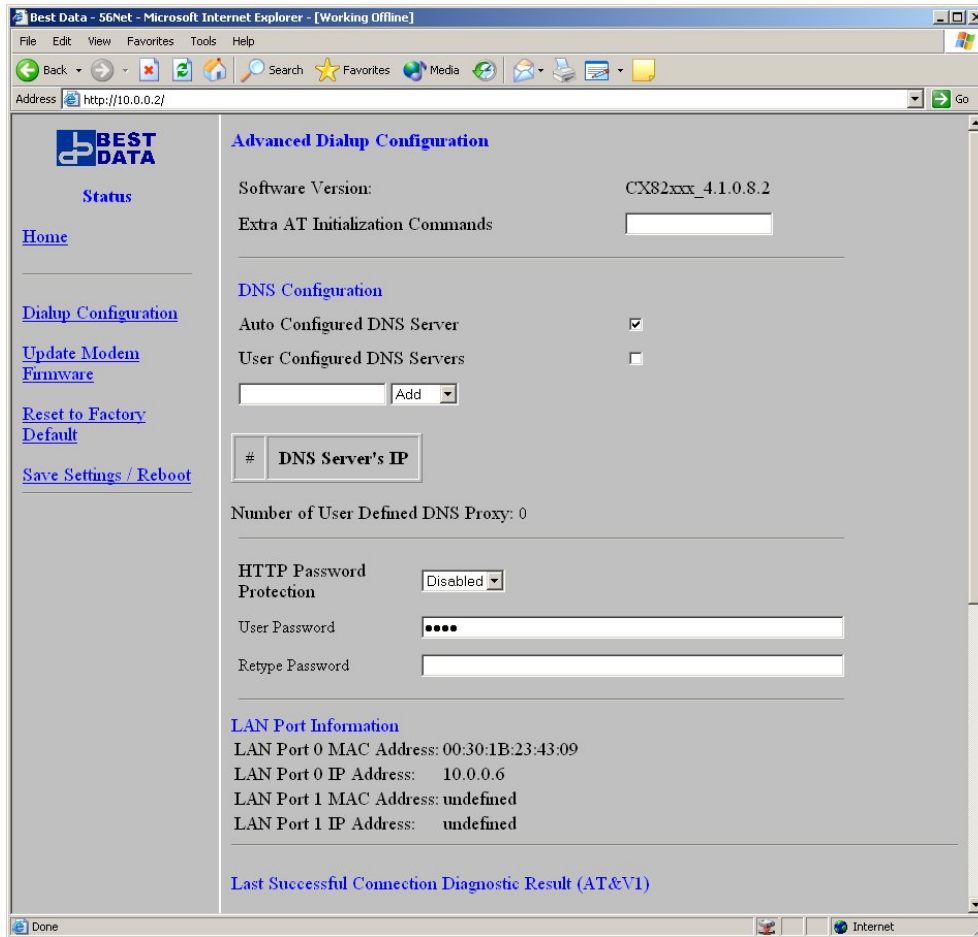
Click the submit button to accept any recent changes made to this page. This option does not permanently save the configuration to the 56NET.

### 9. Save Configuration

Clicking this link will open the Save Configuration screen. Click the Save and Reboot button to save the current configuration. Once the configuration is saved the router will automatically reset. Please wait for the process to complete before clicking on anything else within the web browser window.

## Advanced Dialup Configuration

These settings will affect your local networked computers that are attached to this unit or through a hub that is attached to this unit.



### 1. Extra AT Initialization Commands

You can optionally place a modem initialization string into this field. In most situations you will not need to use this feature.

### 2. Auto Configured DNS Server

Checking this box will allow the modem to obtain the DNS server information from the server you are connecting to. This is the default option and this configuration will be appropriate for most internet connections.

### 3. User Configured DNS Server

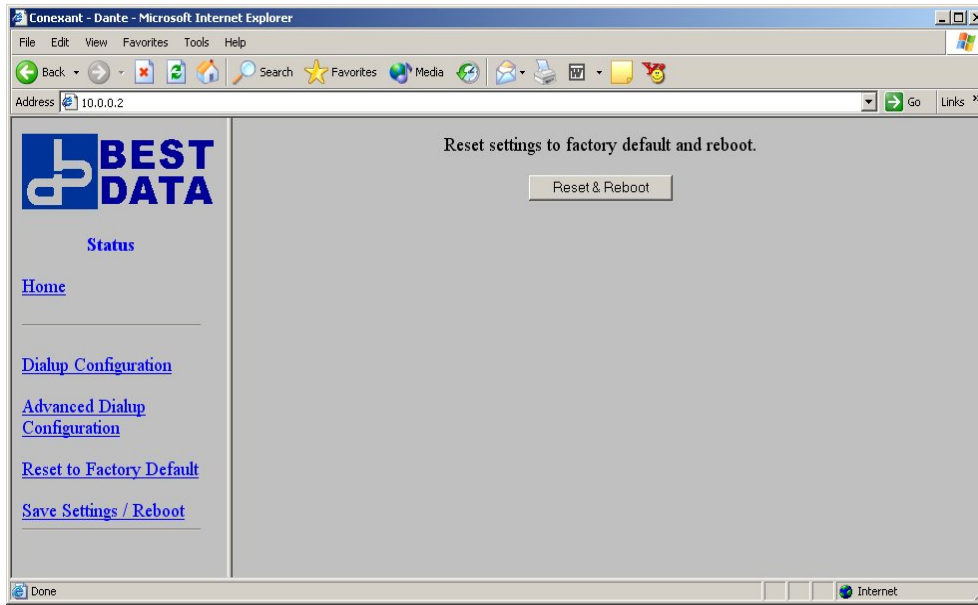
If your ISP does not send the DNS server information with their DHCP lease you can place the DNS server IP addresses into this section by typing the IP address and clicking the ADD option.

### 4. HTTP Password Protection

Enabling this option will force the user to type a password when accessing the router configuration page. When you enable the password the username for the login is: user

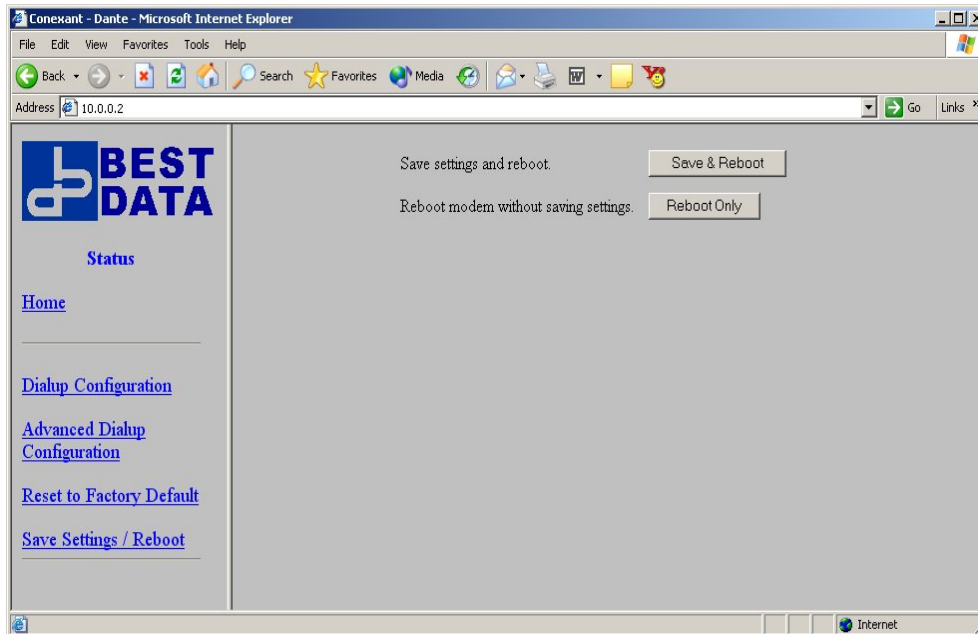
### 5. Save Configuration

You will need to click the Save Configuration link for any changes on this page to be saved permanently to the 56NET.



### 1. Reset & Reboot

Click this button to restore the 56NET to the factory default settings.



### 1. Save & Reboot

Click the Save & Reboot button to save any recent changes you have made to the configuration of the router. After the changes are saved the router will perform a warm boot (reset). The reboot only button is there in case you want to abandon any recent changes that were made to the configuration of the 56NET.

Congratulations, you have completed the 56NET configuration! It is almost time to be able to go online with the 56NET. The last step is to configure your web browser for use with a LAN connection.

Please continue to the section titled Web Browser Configuration.

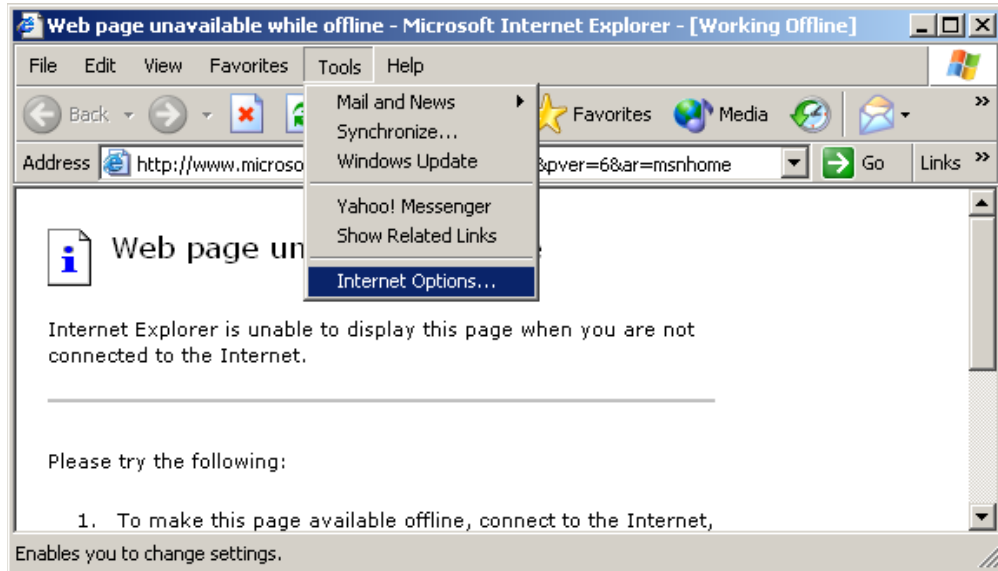
## Web Browser Configuration

This chapter will assist you with setting up your web browser to function with the 56NET.

### Internet Explorer Configuration

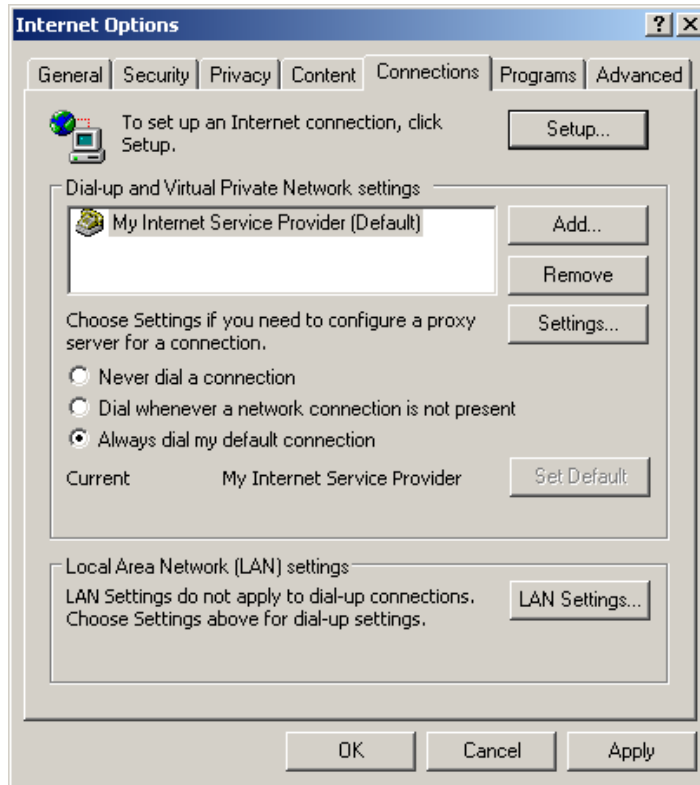
Use the following guide to setup the 56NET to function with Internet Explorer.

1. Launch the Internet Explorer web browser.



2. Click the **Tools** menu and choose **Internet Options**.





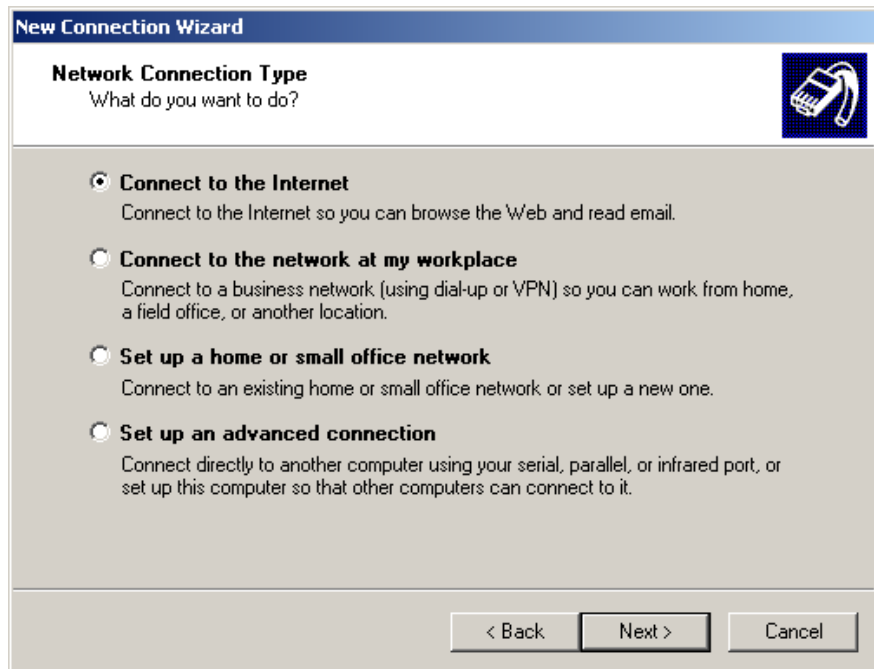
3. The *Internet Options* will appear. Click the **Connections** tab. If you had a previous dial up modem installed, your previous Internet connection should appear under the list of **Dial-up and Virtual Private Network settings**.

For functionality with the 56NET you should remove any existing dial up connections in the list by individually *highlighting* each item and clicking the **Remove** button.

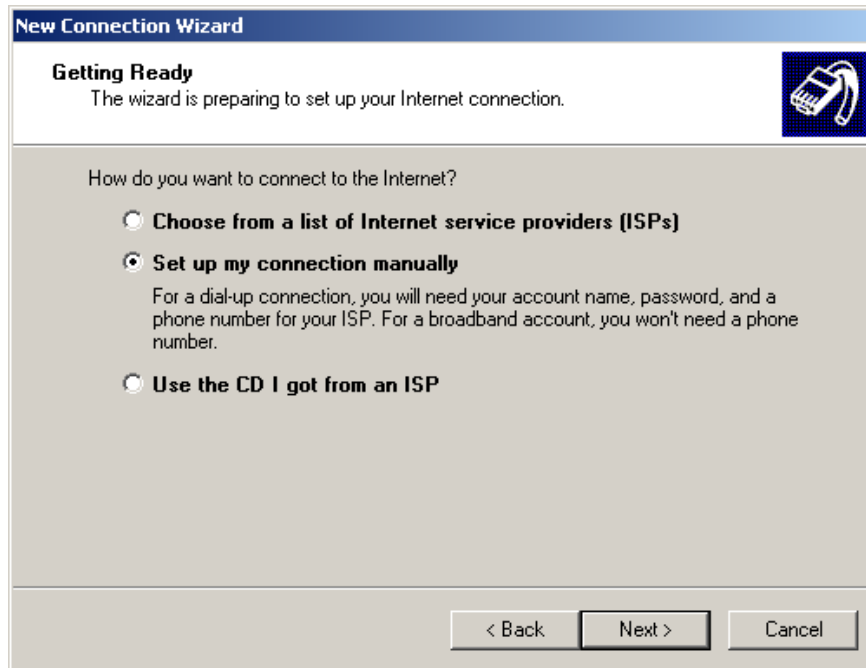
Once the list of Dial-up and Virtual Private Network settings is blank you should click the **Setup** button to continue and the new connection wizard will appear.



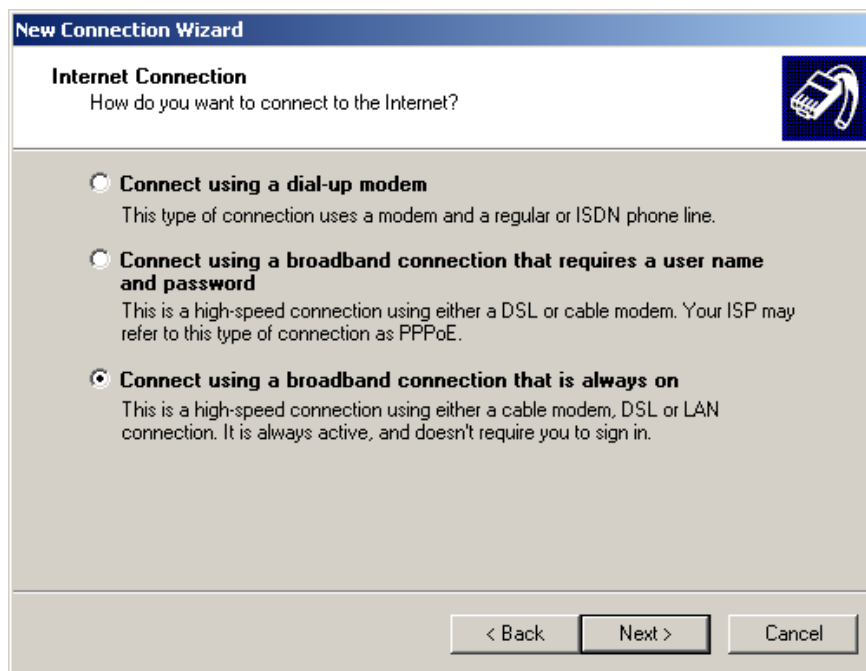
4. Click **Next** to begin the New Connection Wizard.



5. Select **Connect to the Internet** and click the **Next** button to proceed.



6. Select **Set up my connection manually** and click **Next**.



7. Select **Connect using a broadband connection that is always on** and click **Next** to continue.



8. Click the **Finish** button to complete the New Connection Wizard.
9. Close the Internet Explorer window that you originally opened.

The 56NET setup is complete. You should now be able to open Internet Explorer and start browsing the web. If the 56NET modem is not already connected, opening a web browser should send a signal to the 56NET to start a dial up connection \*\*

\*\* If you selected the option to **Reconnect on WAN** and **Automatic Reconnect** covered on page 35 of this guide the modem should start dialing your internet connection. If you did not select these options then you can type **10.0.0.2** in the address bar of Internet Explorer and the configuration page will appear. From there you can click the **Connect** button.)

## TROUBLESHOOTING

Here you will find answers to the most commonly experienced problems that can be expected for this type of product. Please contact our technical support if you cannot resolve the problem with the material provided in this section.

*Problem*            **Network Cable Unplugged**

If you are receiving a message in the system tray stating that the network cable is unplugged or your Ethernet device does not show a solid link it may be due to a few different issues.

*Solution 1*        You may have a faulty or wrong type of Ethernet cable. Make sure to first try the Ethernet cable provided with this product. If available try another Ethernet cable. The Ethernet cable should be a standard straight thru network patch cable.

*Solution 2*        You may be experiencing a compatibility issue between our 56NET and your Ethernet device. Most Ethernet devices have the ability to force a 10baseT or 100baseT connection from within the driver setup for the Ethernet device.

Windows 95/98/ME users can get to these settings by going to **Start / Settings / Control Panel / Network**. When the network properties appear look for your Ethernet device in the list of components and single click it so that it is highlighted. Click the **Properties** button.

Windows 2000/XP users can get to these settings by going to **Start / Settings / Control Panel / Network** (possibly under Network and Internet connections depending on your view). Right click the **Local Area Connection** and left click **Properties**. Click the **Configure** button.

Windows 95/98/ME/2000/XP (continued from above step) users should look for a Settings or Advanced tab when the properties appear. Now look for a setting similar to Media Type, Connection Type, Connect Speed, etc. The correct listing will have options in the drop down menu such as 10baseT or 100baseT, possibly showing full and half duplex options. We recommend starting using 100baseT and then reducing the rate to 10baseT if needed.

Macintosh users should contact Apple to see if there is a possible way to force the network connection type to either 10baseT or 100baseT. We are not aware of any way to handle this within the operating system.

*Problem*

**Modem dials but does not connect**

If the modem is able to dial your ISP but is not able to connect it could be due to a couple of different issues.

*Solution 1*

Verify you have typed in the correct telephone number, username and password to your ISP from within the configuration of the 56NET. You can verify this by opening a web browser, such as Internet Explorer, and type: **10.0.0.2** into the address bar. This will bring up the logon box. The default username is **admin** and the default password is **epicrouter**. Click **OK** to logon to the 56NET. Once you are in the configuration click the Dialup Configuration link in the left frame. Verify that you have the correct information in the various fields.

*Solution 2*

You may be experiencing an issue between the modem in the 56NET and the type being used by your ISP. If you still have a regular analog modem as part of your computer system we recommend testing the previous modem through a terminal emulator, such as Hyper Terminal, Procomm Plus, Microphone LT, etc. Most versions of Windows come with Hyper Terminal. You can open Hyper Terminal by clicking **Start / Programs / Accessories / Hyper Terminal** (located in Communications in later versions of Windows). Once you are in Hyper Terminal you can type TEST for the connection name and click OK to continue. Type the phone number in the phone number field and make sure the correct modem is listed under Connect Using option and click **OK** to continue. Verify the phone number is correct and click the **Dial** button. If the modem is able to connect you should see a login prompt appear within the main Hyper Terminal window. Try to login using your assigned username and password.

If your previous modem is unable to complete this step we recommend contacting your ISP to see if there is an alternate phone number you can connect to.

If your previous modem is able to connect, and you are able to login using your username and password from within a terminal emulator then chances are that there is either a problem with the 56NET modem or there is a compatibility issue between the 56NET modem and the type of modems being used by your ISP. You can also try the next solution to see if it eliminates the problem.

*Solution 3*

The phone line conditions between your location and your local phone company may not be of the greatest quality. For areas with poor phone lines there is an option in the 56NET to force a V.34 connection (connect speeds of 33.6kbps or lesser). You can implement this option by opening a web browser, such as Internet Explorer, and type: **10.0.0.2** into the address bar. This will bring up the logon box. The default username is **admin** and the default password is **epicrouter**. Click **OK** to logon to the 56NET. Once you are in the configuration click the Dialup Configuration link in the left frame. Scroll down the page to V.34 Failsafe Mode and place a check in the box. Go to the bottom of the page and click the Submit button. Go to the bottom of the page and click the Save Configuration link, then click the Save & Reboot button. Try connecting again after the 56NET is finished rebooting.

## Best Data Technical Support

If you run into any issues while using this product first try to resolve the issue by reviewing the troubleshooting section located on page 52 of this guide.

If you are unable to resolve the issue with the troubleshooting section you can contact our live technical support via phone or e-mail for continued product support.

Prior to contacting technical support please have the following information available for the technician who assists you:

Product Model #:	<b>56NET</b>
Computer Brand:	Example: PC Clone, Compaq, Dell, Apple, etc.
CPU Type:	Example: Intel Pentium 4 2.4GHZ, AMD Athlon 2000XP, etc.
Operating System:	Example: Windows XP, Mac OS 9.2, etc.
Ethernet Device(s):	Example: Realtek 8139, ADMtek AN983 10/100, etc.
Issue Description:	Example: Modem reports no dial tone.
Steps taken:	List any steps you have taken to resolve the issue.

## Contact Technical Support

Telephone Number	(818) 773-9600
Days of operation	Monday-Friday
Hours	8:00am-4:30pm
E-mail	<a href="mailto:tech@bestdata.com">tech@bestdata.com</a>