

itho

HRU ECO 4

Installer manual



Table of Contents

1	General information	1			
1.1	Introduction	1	4	Maintenance	12
1.2	Warranty and liability	1	4.1	Filters	12
1.3	Safety	1	4.2	Heat exchanger service	12
			4.3	Motor module	13
2	Technical information	3	4.4	Fans	13
2.1	General description	3	4.5	Control printed circuit board	14
2.2	Description of parts	3			
2.3	Dimensional sketch	4	5	Troubleshooting	15
2.4	Bypass and frost protection	4	5.1	Operation troubleshooting	15
2.5	Specifications	6	5.2	Table of possible faults	15
2.6	Capacity graph	4	5.3	Table of causes	15
2.7	Sound data	7	5.4	Table of solutions	15
3	Installation regulations	8	6	Notes	16
3.1	Installation terms and conditions	8			
3.2	Check upon delivery	8			
3.3	Turning the unit	8			
3.4	Mounting the unit	9			
3.5	Duct connections	9			
3.6	Connecting the condensation discharge	10			
3.7	Capacity settings	11			
3.8	Control using RF Switch	11			

1 General information

1.1 Introduction

This installer manual was compiled for the installation and maintenance of the Itho Ventilation Limited supplied Itho heat recovery unit HRU ECO 4, which includes the following types:

HRU ECO 4 (House)

HRU ECO 4 (Apartment)



The objectives of this installer manual are to:

- ◆ ensure optimum safety during installation and use
- ◆ ensure thorough maintenance
- ◆ provide reference material in the event of a failure.

Although this manual was created with great care, no rights can be derived from it. These products are in continuous development. Itho B.V. and/or Itho Ventilation Ltd reserve the right to modify this manual without prior notice.

Compliance with Building Regulations

The 2006 Edition of the U.K Building Regulations Approved Document F1: Means of Ventilation (applicable in England and Wales) details 4 clearly defined systems of ventilation to dwellings. System 4 - Continuous mechanical extract with heat recovery (MVHR) is complied with by the new HRU ECO 4 ultra-high efficiency whole house heat recovery ventilation system.

System 4 - Continuous Mechanical Supply & Extract with Heat Recovery requires a “minimum high rate” in each wet room to be achieved (Kitchens 13 l/s and both utilities and bathrooms 8 l/s (sanitary only 6 l/s).

The “minimum low rate” is calculated by taking the number of bedrooms in the dwelling and applying the l/s value from Table 1.1b. In addition the rate should be no less than 0.3 l/s per m² of internal floor area (all storeys) plus for each additional occupant over and above the anticipated two for the first bedroom and one for each of the others a further 4 l/s must be added to the extract rate. Also, there is an addition of an allowance to be calculated for air infiltration. The system provides quiet, uninterrupted extract ventilation from the dwelling, removing warm stale air via all of the

“wet” rooms, creating a permanent air path through the property from the “dry” habitable rooms. Air, drawn into the property by the fan is routed through an integral high-efficiency synthetic heat exchanger where warmth from the extracted air is transferred to the incoming fresh air before it is supplied to the habitable rooms. In employing this type of system, there is no need to install background ventilators in the dwelling – an ideal solution to “noisy” sites.

1.2 Warranty and liability

Warranty

The HRU ECO 4 warranty is valid for 2 years after installation date.

The warranty does not apply to:

- ◆ disassembly and assembly costs
- ◆ faults which are, in the opinion of Itho B.V. and/or Itho Ventilation Limited, caused by incorrect treatment, negligence or an accident
- ◆ faults that have been caused by repairs or intended repairs by third parties without authorisation from Itho Ventilation Limited.

If the appliance does not function correctly or develops a fault, contact Itho Ventilation Limited immediately. Ensure that only genuine spares are used for any repairs.

Liability

The HRU ECO 4 was designed for balanced ventilation systems for both high-rise and low-rise buildings. Any other application that has not been discussed with an Itho Ventilation.

Itho Ventilation is not liable for any damages caused by:

- ◆ improper use
- ◆ normal wear and tear
- ◆ not following the instructions in this manual concerning safety, operation and/or maintenance
- ◆ the use of parts which have not been supplied by an Itho Ventilation

1.3 Safety

General Safety

The HRU ECO 4 heat recovery unit has been designed for integration into a ventilation installation.

WARNING

- ◆ Do not use this appliance for functions other than those described in the booklet
- ◆ After removing the appliance from its packaging, ensure that it is complete and undamaged. If in doubt contact Itho Ventilation Limited. Do not leave the packaging within reach of children or the infirm.
- ◆ Certain fundamental rules must be observed when using

- any electrical appliance, including a) never touch appliances with wet or damp hands; b) never touch appliances while barefoot; c) do not allow children to use the appliance without supervision; d) supervise infirm persons when using the appliance.
- ◆ Store the appliance out of the reach of children and infirm persons if you decide to disconnect it from the power supply and no longer use it
- ◆ Do not operate the appliance in the presence of inflammable substances or vapours (alcohols, insecticides, petrol, etc).

CAUTION

The following general instructions are important:

- ◆ Follow the safety instructions to prevent fan damage and personal injuries.
- ◆ Maintenance instructions must be followed to prevent damage and/or excessive wear and tear.
- ◆ The specifications in this manual may not be modified.
- ◆ The fans may not be modified.
- ◆ The motor module is only suitable for a 230 V 50 Hz a.c system.
- ◆ Do not expose the appliance to the weather (rain, sun, etc).
- ◆ Do not place objects on top of the appliance.
- ◆ Regularly inspect the appliance for visible defects. If any faults are found, contact an Itho Ventilation immediately.
- ◆ The appliance must only be installed by a professionally qualified person.
- ◆ Ensure that the electrical system to which the appliance is connected complies with applicable standards.
- ◆ Use a multi-polar switch with a minimum contact gap of 3mm to install the appliance.
- ◆ Switch of should be off the appliance at the main switch:
 - a) if the appliance does not function take out full stop correctly;
 - b) before cleaning the outside of the appliance;
 - c) if the appliance is not to be used for any length of time.
- ◆ Be careful to avoid damaging the electric circuit.
- ◆ Do not use the appliance to control activation of water heaters, room heaters etc., nor should it discharge into the flues of any such appliances.

- ◆ Ensure that the appliance discharges into a single duct (dedicated to this product) which is routed to the outside.
- ◆ The air to be extracted from the dwelling must be clean (i.e. free of grease, soot, chemical and corrosive agents, explosive or flammable mixtures).
- ◆ Keep the appliance intake and outlet grilles free to ensure optimum airflow at all times.

To ensure that the installation complies with the applicable CE Directives, the electric connections of the heat recovery unit HRU ECO 4 should be installed according to the applicable standards.

The device has to be assembled “safe-to-touch”. This means, that under normal operation no-one can come near any turning parts without a deliberate action, such as:

- ◆ disassembly of the casing with appropriate tools
- ◆ taking out the heat exchanger after disassembling the casing
- ◆ removing the motor module after disassembling the casing.

Safety measures

- ◆ The HRU ECO 4 has been designed and constructed such that it is impossible to come into contact with moving parts or parts under voltage when the system is used in a normal way and without deliberate action.
- ◆ The HRU ECO 4 meets the legal requirements for electrical devices.

The following safety measures should be taken into account:

- ◆ Before starting maintenance activities, always electrically discharge the device by isolating the product from the power supply
- ◆ Use appropriate and suitable tools.
- ◆ Only use the device for an application for which it was designed as indicated in Section 1.2 Warranty and liability.

2 Technical information

2.1 General description

The purpose of the HRU ECO 4 is optimum ventilation of homes with minimal energy loss. Air is extracted from the kitchen, bathrooms, ensembles, utility rooms and the toilet and, if required, from a storage room. Air is supplied to the bedrooms and living room. The volumes of air are specified in the Building Regulations Part F1: Means of Ventilation (ADF). The total volume of air extracted and supplied is equal.

The air flows are completely separated and filtered. The energy of the discharge air is transferred to the fresh air supply at a high efficiency of approximately 90%. Condensation can be caused by the discharged air. This is discharged through the sewer drain.

The HRU ECO 4 can be operated from, for example, the kitchen, using a RF switch. Correct application of the ventilation system creates an optimum, healthy and comfortable home climate with minimum energy use.

2.2 Description of parts

The most important parts of the HRU ECO 4 are the following:



Casing

The patented casing consists of an aluminium casing construction that clasps the synthetic inner parts around the heat exchanger. This creates an optimum leak-proof construction.

The front and back of the heat exchanger are sealed by a soft synthetic disk with a bayonet catch. The front of this disk is integrated into the front door.

The colour of the casing construction is RAL 9002, the colour of the front panel is RAL 5014 and the colour of the front door is RAL 9002. The total unit weighs approximately 25 kg.

Compartmentalisation section

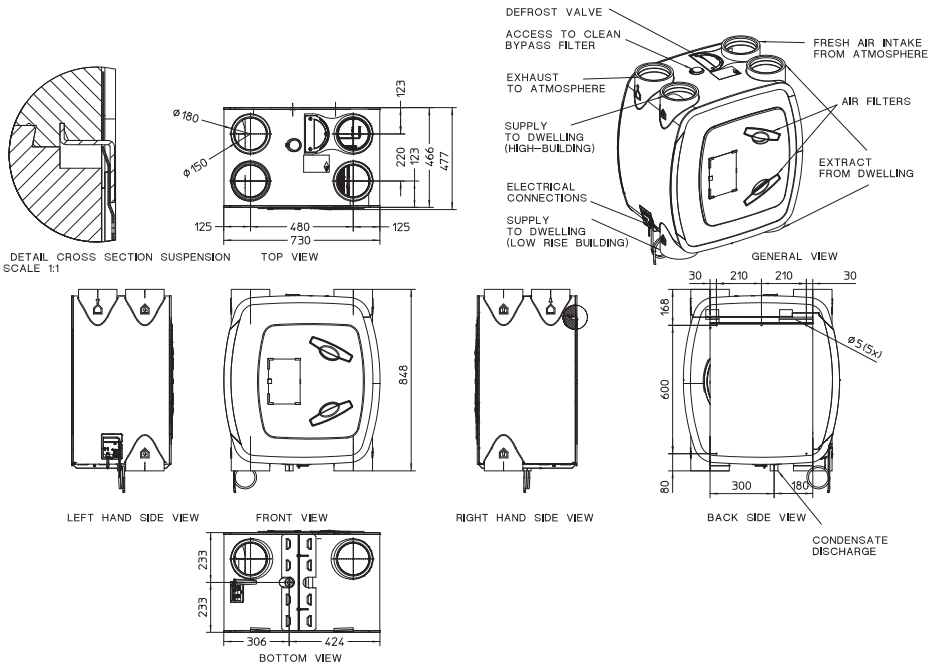
The internal construction for the distribution of the separate air flows is the compartmentalisation section. This compartmentalisation section consists of four high-quality polypropylene parts and is completely recyclable. The result

of the shape and material of the separate compartments is maximum thermal isolation and minimum internal air leakage. The cooling of the discharged air flow in the heat exchanger may cause condensation. The heat exchanger has a catch tray for the condensation which must be connected to the waste water system.

Heat exchanger

This counterflow heat exchanger consists of triangular channels. Each channel is, therefore, surrounded by three channels which flow in the opposite direction. This special construction contributes to an average temperature efficiency of over 90%. The efficiency depends on air volume.

2.3 Dimensional sketch



2.4 Bypass and frost protection

Bypass

The heat recovery unit HRU ECO 4 is delivered as standard with a fully integrated bypass valve. This valve is fully automatic. The bypass ensures that the air from outside is fed around the heat exchanger. It seals the path to the heat exchanger completely. The return air flow still passes through the heat exchanger.

The fresh outside air is, therefore, not heated but blown directly into the home. This is an advantage on hot summer nights. In these circumstances, the outside air is often cooler than the air within the home. In bypass mode the returning air is filtered but the intake air is not.

The purpose of the bypass is to ventilate the house without transferring heat. This is only desirable when the following conditions are met:

- ◆ The inside temperature is higher than desired.
- ◆ The inside temperature is higher than the outside temperature.
- ◆ The outside temperature is higher than approximately 19°C for a sufficient time (how long the bypass stays on depends on the exact outside temperature).

The outside temperature and the inside temperature are measured in the HRU ECO 4. The development of the temperatures allows the fan to recognise a summer day. The bypass will be closed automatically as soon as one of these conditions is no longer met.

The power with which the bypass valve discharges heat, this depends on the temperature of the air inside and the temperature of the air outside. It also depends on the air volume discharged by the HRU ECO 4. The rule of thumb for the HRU ECO 4 is to discharge 50 W thermal power per degree of temperature difference at 150 m³/h (medium mode). If the inside temperature is 25 °C and the outside temperature is 15 °C, 500 W will be discharged in the medium mode.

Frost protection

The heat recovery unit HRU ECO 4 is delivered as standard with frost protection. The frost protection consists, amongst other things, of a unique frost valve integrated at the top of the unit. This protection prevents the unit from freezing (internally) during the winter. The operation of the frost protection is fully automatic.

Frost protection operation

The air discharged from the house is used to heat up the fresh air coming from outside. The air in the heat exchanger, therefore, cools down. During a period of frost, the frost protection ensures that the heat exchanger in the unit cannot freeze.

If the temperature of the discharge air in the heat exchanger nears freezing, the device will open the frost valve at the top of the unit regularly and take in warm air from the area in which the unit is located. This warm air is mixed with the cold air coming from outside.

At the same time, the intake fan will turn faster (the fan is revved up) to ensure the volume of fresh outside air remains the same. The pre-heating of the fresh cold outside air ensures that the warm air discharged from the home does not have to warm the cold outside air too much. The temperature of the discharge air in the heat exchanger thus remains safely above freezing.

Should the outside air temperature become even lower, the intake fan will turn more slowly (the fan is revved down) until it reaches a minimum. If the temperature drops even further, the discharge fan will be revved up and the intake fan will keep turning at the minimum rate.

If the outside temperature drops to an extreme low, the intake fan will be turned off but the discharge fan will remain in operation. The frost valve will also be closed. After some time, the intake fan will turn at minimum speed and the frost valve will be reopened to check whether the risk of freezing has passed. If the outside temperature rises, the above measures are taken in reverse order until the risk of freezing has passed. The resident “always” determines the air volume that is discharged.

The frost valve can be easily removed from the top of the HRU ECO 4 without tools.

Push the frost valve open (into the unit) using four fingers against each other (with fingernail side up). Make sure your thumb presses the black foam outside the unit (between the valve housing and the adjacent nozzle). Carefully pull the valve housing upwards while sliding it in the horizontal direction of the nozzle. The motor and other bypass parts can now be inspected. The servomotor can be replaced, if required, by uncoupling the connector and unscrewing the two Phillips screws.

Important!

Make sure nothing is ever placed on top of the frost valve. This would hinder the proper operation of the frost protection.



2.5 Specifications

	Capacity [m ³ /h]	Pressure [Pa]	Power [W]	Current [A]*	Voltage [V]*	Cos phi *	Thermal efficiency [%]
Mode 1 Minimum mode	50	10	8	0.05	230	0.07	98
Mode 1 Low mode	75	20	12	0.1	230	0.55	98
Mode 2 Medium mode	150	40	29	0.24	230	0.53	96.2
Mode 2 Medium mode	150	80	38	0.31	230	0.53	96.2
Mode 3 High mode	225	100	74	0.59	230	0.59	94
Mode 3 High mode	225	150	88	0.69	230	0.56	94
Mode 3 High mode	275	100	106	0.83	230	0.56	93
Mode 3 High mode	275	150	126	0.99	230	0.56	93
Mode 3 Maximum mode	325	100	156	1.22	230	0.56	92
Mode 3 Maximum mode	325	150	176	1.36	230	0.56	92

* Values to be entered in the EPC calculation according to NEN 5128.

The thermal efficiency of the HRU ECO 4 has been determined by TNO at 96.2%, reference number TNO-MEP 2002KTW/534.

Other technical data

Temperature efficiency with equal mass flows

: 96.2% (measured according to NEN 5138)

Supply voltage

: 230 V ± 5%

Frequency

: 50 Hz

Weight

: 24 kg + 1 kg

Dimensions

: 848 mm (H)

730 mm (W)

479 mm (D)

Duct diameter

: 150 mm (inner) and

180 mm (outer)

Condensation discharge diameter: 40 mm (outer)

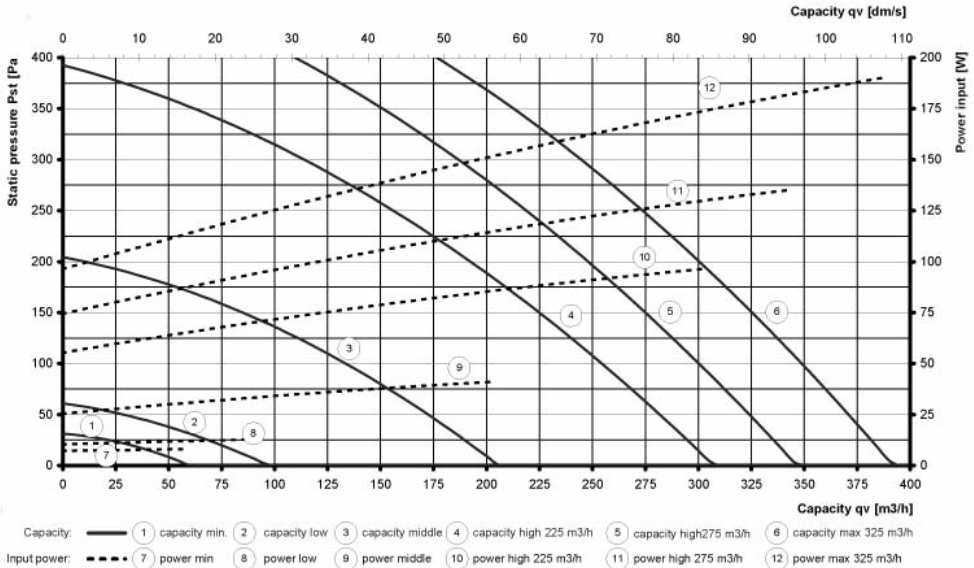
Degree of protection

: IP31

Filter classification

: EU3

2.6 Capacity graph



2.7 Noise data

Sound Level Lw(A)

		total	63 Hz	125 Hz	250 Hz	500 Hz	1000 Hz	2000 Hz	4000 Hz	8000 Hz
		[dB(A)]	[dB]	[dB]	[dB]	[dB]	[dB]	[dB]	[dB]	[dB]
Radiation	25 m ³ /h 20 Pa	<23.5	47.2	30.4	23.3	21.4	13.2	11.5	4.7	9.4
	75 m ³ /h 20 Pa	30.5	45.2	34.2	32.1	29.6	24.2	18.1	5.6	9.3
	150 m ³ /h 80 Pa	46.5	46.6	44.9	46.3	44.8	40.9	39.4	25.1	15.4
	225 m ³ /h 100 Pa	53.8	50.0	48.1	52.7	52.2	47.8	47.3	35.7	24.1
	225 m ³ /h 150 Pa	55.0	53.6	48.7	53.0	53.8	48.9	48.7	38.6	29.5
	275 m ³ /h 100 Pa	57.5	58.2	49.6	56.4	55.7	51.5	50.8	41.3	29.4
	275 m ³ /h 150 Pa	58.5	61.8	50.4	56.8	56.7	52.5	51.8	43.4	38.4
	325 m ³ /h 100 Pa	60.5	58.6	50.4	58.9	58.1	54.7	53.7	45.6	33.7
	325 m ³ /h 150 Pa	61.5	54.7	51.8	59.2	59.3	55.6	54.5	47.2	37.0

Sound Level Lw(A)

		total	63 Hz	125 Hz	250 Hz	500 Hz	1000 Hz	2000 Hz	4000 Hz	8000 Hz
		[dB(A)]	[dB]	[dB]	[dB]	[dB]	[dB]	[dB]	[dB]	[dB]
Exhaust	25 m ³ /h 20 Pa	20.5	46.2	19.7	22.6	15.2	10.3	7.1	4.3	9.0
	75 m ³ /h 20 Pa	28.5	46.7	28.8	33.0	25.4	22.3	12.1	4.7	8.8
	150 m ³ /h 80 Pa	42.5	45.9	37.3	46.9	40.0	37.0	30.6	15.1	12.5
	225 m ³ /h 100 Pa	49.5	47.0	41.8	53.7	47.6	43.2	37.7	25.3	14.3
	225 m ³ /h 150 Pa	50.5	46.8	43.2	53.6	49.4	44.1	38.9	27.0	14.9
	275 m ³ /h 100 Pa	53.5	46.8	43.6	58.4	50.8	46.9	40.9	30.7	16.8
	275 m ³ /h 150 Pa	54.0	46.8	46.1	58.1	52.1	47.8	42.0	32.5	17.4
	325 m ³ /h 100 Pa	56.5	47.2	44.7	61.4	53.6	49.9	43.8	35.1	19.8
	325 m ³ /h 150 Pa	57.0	48.6	46.5	60.6	54.9	50.6	44.5	36.3	20.6

Sound Level Lw (A)

		total	63 Hz	125 Hz	250 Hz	500 Hz	1000 Hz	2000 Hz	4000 Hz	8000 Hz
		[dB(A)]	[dB]	[dB]	[dB]	[dB]	[dB]	[dB]	[dB]	[dB]
Inlet	25 m ³ /h 20 Pa	30.0	33.6	29.4	29.5	29.7	22.7	21.7	7.2	12.0
	75 m ³ /h 20 Pa	40.5	47.3	40.8	40.8	40.2	35.3	28.1	13.4	12.7
	150 m ³ /h 80 Pa	56.5	50.0	51.9	56.7	54.9	51.3	48.9	36.2	22.9
	225 m ³ /h 100 Pa	65.3	50.7	56.0	64.4	65.6	58.6	57.5	47.0	33.6
	225 m ³ /h 150 Pa	66.0	51.4	56.7	64.7	65.5	59.7	59.1	48.9	35.5
	275 m ³ /h 100 Pa	69.5	52.1	57.2	68.0	69.6	62.4	61.1	52.7	39.1
	275 m ³ /h 150 Pa	70.5	53.0	58.0	58.8	70.6	63.3	62.2	54.6	40.5
	325 m ³ /h 100 Pa	73.0	53.2	57.7	70.3	72.9	65.9	64.2	57.2	43.6
	325 m ³ /h 150 Pa	74.0	54.1	58.7	71.3	74.1	67.0	65.0	58.7	45.0

3 Installation regulations

3.1 Installation requirements

The HRU ECO 4 should be installed following the general and local safety and installation regulations and the instructions in this manual:

- The HRU ECO 4 should be located on a suitable internal wall.
- The HRU ECO 4 requires 230 V 50 Hz mains voltage. The tolerance for the mains voltage is 5%.
- A two pole isolating switch with a minimum contact gap of 3mm must be fitted.
- The feeder cable is 1.5 m long and the connection is located at the left side of the unit. If the unit is assembled backwards, this connection is at the right side of the unit.
- The ducts should be of the correct dimensions.
- The ducts to and from the exterior should be thermally insulated and damp proof.
- The HRU ECO 4 should be mounted on a wall with a wall mass of at least 200 kg/m².
- The supplied silencer (D = 180 mm, L = 50 cm) should be added to the supply duct to the home to achieve the optimum comfort level in the home.
- The HRU ECO 4 has a condensation discharge that should be connected to the house sewerage. (Refer to Section 3.6.)
- The HRU ECO 4 has to be mounted vertically and level due to the catch tray.
- The HRU ECO 4 should be accessible for service and maintenance work. Make sure there is 500 mm open space at the front of the unit. This means that a distance of a metre from the wall should be available at the location where the unit is to be placed. That space is required to be able to slide the service module, the heat exchanger and the filters out of the unit. The bottom of the unit and the electrical connections at the side should also be accessible for service work.

3.2 Check upon delivery

Check the unit upon delivery to discover any faults prior to assembly. This ensures the unit can be easily exchanged without requiring additional work.

- Check whether the name plate data and the sticker on the box are correct before removing the packaging.
- Take the unit carefully out of the box. The unit can best be placed on the nozzles at the bottom or top. Check the unit for visible damage.
- The condensation coupling and the user manual should be included in the box.

3.3 Turning the unit

The HRU ECO 4 is delivered as standard with the motor module at the left. The unit can be easily turned without using tools before it is mounted if this is preferable with

regards to the position of the duct system. If the unit does not require turning, please continue with the instructions in Section 3.4. If the unit does require turning, follow the instructions below.

- Remove the filters holders [1]
- Turn the front door [1] with bayonet catch 90 degrees anticlockwise and remove it.



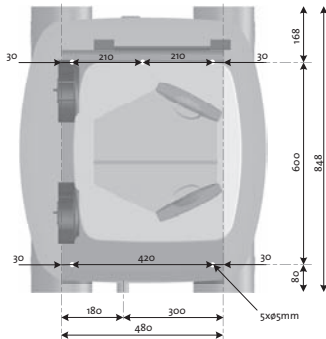
- Turn the bayonet catch at the rear 90 degrees anticlockwise as well and remove it.
- Move the front plate [2] with your right hand (without turning it) to the other side and correctly place the plate by pressing the edge under the black edge of the housing. This is easiest when the unit is flat on the floor. Make sure the floor surface is level to ensure the aluminium casing is not damaged.
- Place the front door at the new front of the unit. Refer to the picture. Turn the front door 90 degrees clockwise until it is vertical. Make sure that the round foam disk is in place in the hole against the heat exchanger between the front door and the exchanger.
- Place the bayonet catch in the new back in the same way. Make sure that the foam disk between the heat exchanger and the bayonet catch is in place.

The unit has been turned and is ready for assembly. The front is now the rear and vice versa. The electrical connections are now located at the right of the unit.

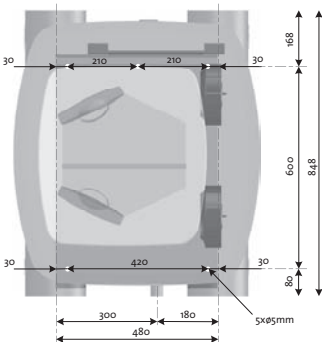
3.4 Mounting the unit



The HRU ECO 4 is delivered as standard with a mounting set. The mounting materials are to be procured elsewhere. The location of the drill holes is indicated in the drawing. The edge of the mounting set corresponds with the centre-lines of the ducts. The notch at the bottom of the mounting set indicates the location of the condensation discharge (left for the standard unit and right for the turned unit).



Standard version.



Turned version.

- ◆ Determine the exact location for the unit, keeping the mounting requirements in mind.
- ◆ Attach the mounting set to the wall using appropriate mounting material.
- ◆ Place the unit on the lower supports and push the unit against the wall at the top in such a way that the mounting strip fits into the unit.
- ◆ Lower the unit until the lower part of the unit is supported by the mounting set supports.

3.5 Duct connections

The HRU ECO 4 is delivered as standard with the motor module at the left. Diagram 1 shows the duct connections for the standard version. Diagram 2 shows the duct connections for the turned version.

All exhaust and supply air connections have an internal diameter of 150 mm and external 180 mm. The connections can be used to attach Vortice modular rigid ducting and insulated flexible aluminium ducts and accessories. Each connection is provided with an illustration that shows the direction and source of the air.

Diagram 1, Standard version.

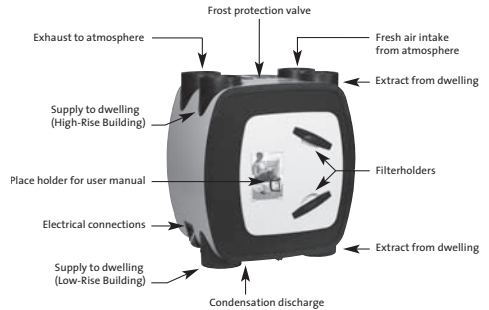
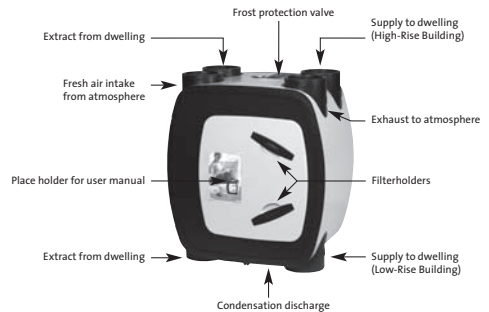


Diagram 2, Turned version.



Suction of fresh outside air

This nozzle is used for the intake of outside air. This duct should be thermally insulated and damp proof to prevent condensation on the outside of the duct.



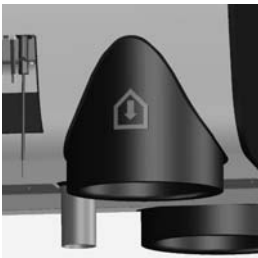
Discharge to outside

This nozzle is used for the discharge of air. This duct should be thermally insulated and damp proof to prevent condensation on the inside and outside of the duct. If venting to the roof, we recommend using a lead-through for the roof that does not allow condensation or rain to enter. If this is not the case, the parts of the duct system between the discharge nozzle and the lead-through in the roof should be water-tight. The unit discharges any condensed water through the condensation discharge.



Supply to home in low-rise building

Heated air is supplied to the home through this nozzle. The connection is at the bottom for a low-rise building unit. The supply nozzle for a high-rise building unit is not used. The silencer duct should be added to the supply duct to the home to achieve the optimum comfort level in the home.



Supply to home in high-rise building

The connection is at the top for a high-rise building unit. The supply nozzle for a low-rise building is not used.

Return from home for low-rise and high-rise buildings

These nozzles are used for the air sucked from the home. The ducts do not require thermal insulation. These two nozzles are connected internally. The selection of one of the two nozzles for the return air connection is; therefore, open to the installer for both the low-rise and high-rise buildings. It is also possible to use both nozzles, which has a positive influence on the resistance of the duct system. The red nozzle stop is used to close off the unused nozzle.



3.6 Connecting the condensation discharge

The condensation discharge piping is located at the bottom of the HRU ECO 4. Connect this properly to prevent damage to the unit by condensation. The exterior diameter of the glued joint of the supplied condensation discharge coupling is 40 mm. All other materials are to be procured elsewhere.

This condensation discharge can be mounted to a hose column using a glued joint. A hose with an inner diameter of at least 20 mm should be mounted. Make sure that the hose is placed sufficiently deep into the air trap (at least 30 mm below water level). Cut the end of the hose diagonally.

The condensation discharge can also be connected using PVC house sewerage material. A provision to be able to refill the air trap should be added in that case.

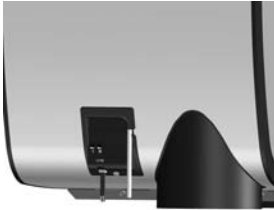
Pour water into the air trap and check the condensation discharge for leakage.

Make sure that the air trap is not completely glued together to allow for the cleaning of the air trap.

3.7 Capacity settings

The standard version of the plastic connection cover of the HRU ECO 4 has two potentiometers for the low mode and the high mode, respectively. These are used to determine the ventilation capacity for the low mode and the high mode. The medium mode is set to the arithmetic average

of the low mode and the high mode. As standard, the high mode is set to 225m³/h.



The ventilation volume may only be increased using the trimmer if and when the required air volume is not attained when the valves are set and the valves are already completely open. This ensures that as little energy as possible is used.

3.8 Control using RF Switch



The HRU ECO 4 can be operated using the RF Switches. These are used to switch between low, medium and high mode. The low mode is used at night, the medium mode during the day when there are people at home and the high mode when cooking, showering or bathing. The RF Switches are often placed in the wet rooms, (kitchen,

bathroom etc). The RF operation switch can be used to operate the ventilation from multiple locations (refer to Section 3.10). Up to 20 wireless RF operation switches can be used to operate the HRU ECO 4 .



The RF operation switch (transmitter) can be used to set the ventilation unit to one of the three ventilation modes (capacities): low, medium and high. The switch also has a timer. The ventilation unit is switched to high mode for a predetermined time when the timer button is pressed. The timer automatically switches the ventilation unit to low mode after the time has elapsed.

The time setting depends on the number of times the timer button is pressed consecutively:

- ◆ Press the timer button once to set the ventilation unit to high mode for 10 minutes.
- ◆ Press the timer button twice to set the ventilation unit to high mode for 20 minutes.
- ◆ Press the timer button three times to set the ventilation unit to high mode for 30 minutes.

If the operation switch is used by choosing mode 1, 2 or 3 while the timer is in operation, the timer is switched off and the ventilation unit operates in the chosen mode. The radio frequency operation does not require additional cabling.

4 Maintenance



CAUTION! The range of the RF operation switch (transmitter) is 100 metres in a free field.

The distance at which the RF operation switch can function properly depends on the obstacles interfering with the RF signal, i.e., the walls and floors between the RF operation switch and the receiver.

4.1 Cleaning grilles without filters

Grilles without filters can be taken out of the duct opening (twist to the left). Before you clean the grille in warm water (with detergent), remove the foam plastic ring. After cleaning, the grille can be replaced in the duct opening with a twist to the left. Always make sure you replace a grille in the same room.

The filters

For the user, maintenance is limited to cleaning the filters. In order to safeguard the proper functioning of the unit, the filters will have to be cleaned or replaced regularly. The table below indicates the average terms for maintenance or replacement of the filters. This may differ per situation. The unit comes with standard G3 filters. Up to half a year after the delivery of the house, the filters will have to be cleaned once a month. After this, the filters will have to be replaced.



Filter	Clean	Replace
G3	Every 3 months	Once a year
G4	Every 9 months	Once every 1.5 years
F7	Every 7 months	Once a year

Replace the filters in this order:

- ◆ Take the power cable out of the socket
- ◆ Pull the filter holders out of the unit
- ◆ Remove the old filter from the filter holder
- ◆ Clean the old filter or take the new one from the packaging (filters can be cleaned with a vacuum cleaner)
- ◆ Place the new filter in the filter holder
- ◆ Put the power cable back in the socket



Insect filter

Once a year, the mosquito filter must be cleaned. The

occupant can do this him / herself. First, remove the power cable. Remove the yellow cap at the top of the unit. Now insert the nozzle of the vacuum cleaner into the hole and turn on the vacuum cleaner. This way the vacuum cleaner removes any mosquitoes and suchlike present. Replace the yellow cap and switch the unit on again.

4.2 Heat exchanger service

The long-term efficiency of the heat exchanger may decrease due to the insulation effect of contamination that got past the filters. How often the heat exchanger should be cleaned depends on the maintenance of the filters. Replace the heat exchanger once every six years if the filters are maintained regularly.

The heat exchanger can be cleaned as follows:

- ◆ Remove the filters from the unit as described in Section 4.1.
- ◆ Unscrew the two nuts at the bottom of the unit but make sure the nuts remain on the bolt.



- ◆ Remove the heat exchanger from the unit by pulling the clamping strip. This action causes friction because the unit has to be as leak-proof as possible. Hold the bottom of the unit to ensure it stays against the wall. Use the clamping strip to carry the heat exchanger. Do not use the green surfaces to carry it.



Caution! The heat exchanger may leak condensation. This is normal and is not a problem.

- ◆ Rinse the heat exchanger using a soap solution.
- ◆ Slide the heat exchanger back into the unit without tilting it. The green surface should be parallel to the edge of the housing.
- ◆ Slide the filters into the unit until the filter no longer protrudes from the heat exchanger.
- ◆ Fasten the two nuts on the bottom of the unit.
- ◆ If the sealing disk is not attached, it should be placed against the heat exchanger.
- ◆ Put the front door back by pushing it into the hole.
- ◆ Turn the front 90 degrees clockwise until the front door



is vertically in the unit.

- Place the feeder cable in the wall socket.
- The HRU ECO 4 is ready for use.

Replacement Heat Exchangers are available from Itho Ventilation Limited

4.3 Motor module

All moving parts, except the bypass and the frost protection, are located in the motor module. The motor module can be replaced or repaired outside the unit in case of malfunction. The motor module consists of a hard synthetic plate. The fans and the control are mounted on this plate. This hard synthetic plate is jammed in the black synthetic foam housing.

Follow these instructions for replacing the motor module:

- Isolate the product from the electrical supply
- Remove the communication cables from the unit connectors.
- Remove the filters and the heat exchanger as described in Section 4.2.
- Disconnect the electric cable from the bypass frost valve motor. This has to take place near the supply fan.
- Slide the motor module from the unit while holding the housing to ensure the unit stays mounted on the wall.

Follow the instructions in reverse order to mount the motor module:

- Slide the motor module into the ventilation unit. Push the casing a little outwards to make it easier to slide the motor module into the unit. The motor module will encounter some resistance when it is at approximately 3 cm from the fully inserted position. Press the motor module a little outwards from the inside of the unit.
- Slide the motor module until the edge of the housing is level with the module.
- Reconnect the bypass cable and the connector.
- Position the heat exchanger.
- Fasten the two nuts on the bottom of the unit.
- Place the filters.
- Place the sealing disk.
- Mount the front door.
- Connect the communication cables.
- Place the feeder cable in the wall socket.
- The unit is now ready for use.



4.4 Fans

The unit has two energy-saving direct current motors. The fans have a permanent magnet motor and, therefore, the required energy supply is minimal. The blades are robust and bent backwards. The shape of the blades ensures the fan is less susceptible to long-term contamination. The maintenance frequency for the cleaning of the blades is normally once every six years, but this depends on the maintenance of the filters.

Follow these instructions to assemble and disassemble the fans:

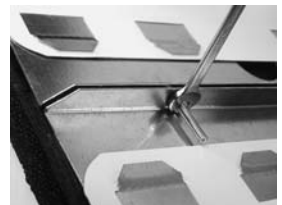
- Remove the two screws which secure the printed circuit board module to the motor module.
- Remove the insulation plate.
- Turn the printed circuit board module and pull the connector from the frost protection sensors and the connector from the bypass. These are the connectors to the cables that are led through the black foam synthetic housing.
- The hard synthetic plate including the fans, power supply and control can now be separated from the black foam synthetic housing.
- The fans can now be removed:
- Remove the cable seal from the hole.
- Disconnect the connector from the printed circuit board.
- Loosen the four M4 nuts.
- Remove the fan including the vibration dampers from the motor plate and pull the cable with the connector through the hole in the motor plate.

The fan is now ready for cleaning or replacement.

Follow the instructions in reversed order to mount the fans:

- Pull the cable with the connector through the corresponding opening in the motor plate.
- Put the ventilator in position by pushing the studs of the four vibration dampers through the motor plate.
- Add a blocker ring to every vibration damper. This prevents loosening through vibration.
- Fasten the four M4 nuts.
- Add the cable seal.
- Connect the connector to the printed circuit board.

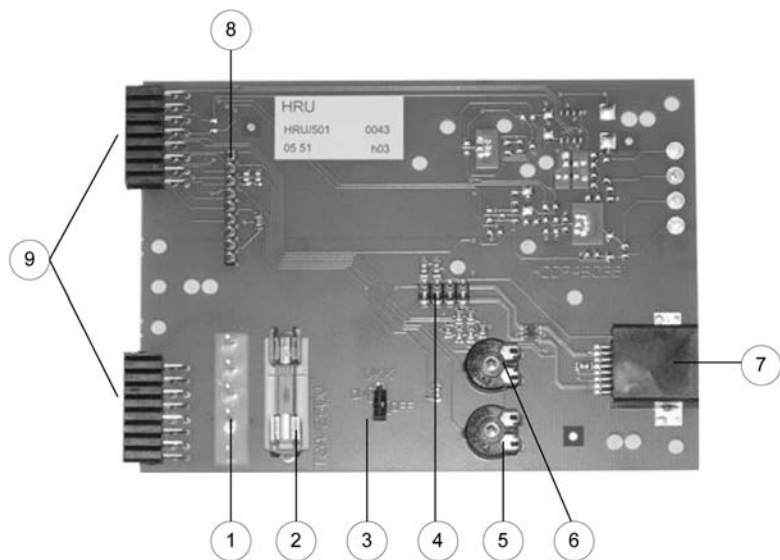
Attention: The upper fan should be connected to the lower connector. The lower fan should be connected to the upper connector. The frost protection does not function if this is the other way around. Reconnect the frost protection sensors connector and the bypass connector. Refer to Section 4.5 for instructions on connecting the printed circuit board.



4.5 Control printed circuit board

The control does not require maintenance. An overview of the functions of the critical parts is provided to help solve the problem in the event of malfunction:

1. Feeder cable connector
2. Glass fuse T2A/250 V (20 x 5 mm)
3. VKK jumper
4. Connector I2C
5. Potentiometer low speed
6. Potentiometer high speed
7. Connector PC communication RJ-45
8. Connector R+
9. Connector control printed circuit board



5 Troubleshooting

5.1 Troubleshooting work method

The following table contains a list of possible problems. Each problem is followed by a number. This is the number of the possible cause of the problem. This number can be

5.2 Table of possible problems

No.	Possible problem	Number of cause
1	Neither fan functions.	1; 2; 3
2	Only the intake fan functions.	4
3	Only the discharge fan functions.	5; 4
4	The unit is leaking water.	6; 7
5	The duct is leaking water.	8; 9
6	The unit is making a noise.	10; 11
7	The valves are making a noise.	12; 13
8	The air quality in the home is bad.	13
9	The unit does not respond to the 3-position mode switch.	14

5.3 Table of causes

No.	Possible problem	Number of cause
1	No power supply to the wall socket.	1
2	The supply cable is not fitted correctly to the unit connector.	2
3	The fuse on the printed circuit board is faulty.	3
4	The fan's connector on the printed circuit board is not fitted correctly.	4; 5
5	The frost protection is active.	6
6	The condensation discharge has not been connected.	7
7	The condensation discharge is clogged.	8
8	The ducts have not been insulated thermally or are not damp proof.	9
9	A roof lead-through has been applied which is not rain-tight, thermally insulated or damp proof.	10
10	The unit has been mounted on a wall with a mass less than 200 kg/m ² .	11
11	The unused nozzle has not been capped.	12
12	An sound insulation hose has NOT been mounted.	13
13	The valves have not been synchronised correctly.	14
14	The 3-position mode switch is faulty.	15

used to find the possible cause in the table of causes. Each cause is also followed by a number. This is the number of the possible solution. Follow the instructions specified in the table.

5.4 Table of solutions

No.	Possible solution or explanation
1	Check whether the wall socket has supply voltage and repair if required. Check the operation of the unit.
2	Check whether the plug has been fitted correctly to the unit connector. Check the operation of the unit.
3	Remove the motor module (refer to Section 4-3). Check the other parts to find the cause of the triggering of the fuse. Correct any defects and replace the fuse T2A /250 V (20 x 5 mm). Check the operation of the unit.
4	Remove the motor module (refer to Section 4-3). Check whether the fan connector had been fitted correctly to the printed circuit board. Check the operation of the unit.
5	Remove the motor module (refer to Section 4-3). Check whether the connector of the intake fan has not been exchanged with the connector of the discharge fan (chapter 5.4). Check the operation of the unit.
6	Switch the control of the intake fan off in case of very low outside temperature to avoid frost problems. When the outside temperature rises again, the intake fan will automatically be switched on. This is not a fault.
7	Moisture may enter the heat exchanger due to differences in air temperature. This is normal. Connect the condensation discharge.
8	Remove the obstacle in the condensation discharge.
9	Insulate the ducts thermally and make sure they are damp proof.
10	Use a rain-tight, thermally insulated and damp proof roof lead-through.
11	Ensure the unit is mounted on a wall with a mass of at least 200 kg/m ² .
12	Close off the unused nozzle using a cap.
13	Mount the sound insulation duct.
14	Synchronise the valves using the air balance calculation.
15	Replace the 3-position mode switch.

Blank writing paper with horizontal lines.

Handwriting practice lines consisting of multiple horizontal lines spaced evenly down the page.

Energy-efficient climate control systems that add to your comfort. Itho proves it can be done.

Wherever you live or work, there's a good chance that you will come into contact with Itho products and services in the coming months and years in the UK.

After all, we develop climate systems for all those places where people are active; from homes to offices; restaurants and hotels.

The residents, occupants and owners of all of these buildings ultimately always demand the same two things. On the one hand, they want the highest possible level of comfort. On the other hand, they also want the lowest possible energy consumption. At first glance, these would appear to be conflicting demands.

At Itho, we have made it our goal to prove that these two demands can actually go hand in hand. We have the professional skills, drive and innovative strength necessary to actually provide the proof: with statistics, test results and mostly, satisfied and enthusiastic clients and users.



Itho Ventilation Ltd

10 Faraday Court
First Avenue
Centrum 100
Burton on Trent

DE14 2WX

T +44 (0) 870 460 6741

F +44 (0) 870 460 6742

E info@itho.co.uk

I www.itho.co.uk