

auma[®]

DP-WIN (Version 3.0) Test and demonstration software for PROFIBUS DP actuators

Manual



Certificate Registration No.
12 100 4269

Scope of these instructions: These instructions are valid for AUMA actuators with controls AUMA Matic/ AUMA VARIOMATIC PROFIBUS DP.

Table of Contents

1. Introduction	3
1.1 Summary of functions	3
2. Installation	3
2.1 Hardware and software requirements	3
2.1.1 Hardware	3
2.1.2 Software	3
2.2 Installation	3
2.2.1 Installation of the Master card and the Profibus Application Program Interface	3
2.2.2 Installation of the program DP-WIN	4
2.2.3 Starting the program	4
3. User interface	5
3.1 The menu bar	5
3.1.1 File	5
3.1.2 Bus parameters	5
3.1.3 Master-Mode	5
3.1.4 Tests	5
3.1.5 Options	6
3.1.6 DPV1	6
3.1.7 The menu item "?"	6
3.2 The tool bar	6
3.2.1 Info	6
3.2.2 Master Stop	6
3.2.3 Master Clear	6
3.2.4 Master Operate	6
3.2.5 Save parameters	6
3.2.6 Load parameters	6
3.2.7 Operating test	7
3.2.8 Torque monitoring	7
3.3 The window Profibus stations (live list)	7
3.4 The window Actuator status (process representation input)	8
3.5 The window Actuator control (process representation output)	9
3.6 The status bar	9
4. Operating test	10
5. Trouble shooting and corrective actions	11

1. Introduction

DP-WIN is the Profibus DP test- and demonstration software for AUMA actuators.

AUMA actuators with Profibus DP interface can be tested on site with this program. It can also be used as a demonstration software to show the characteristics of the AUMA Profibus DP actuators.

1.1 Summary of functions

- Display of all stations on the Profibus (live list).
- All information supplied by the actuator via Profibus DP is displayed.
- Control of AUMA actuators.
- Automatic operating test for AUMA actuators.
- The AUMA parameters can be set.
- Parameter sets can be saved.
- Read-out of operational data and electronic name plate (if available in actuator, software version in actuator: Z027.988A).

2. Installation

2.1 Hardware and software requirements

2.1.1 Hardware

- PC or PC compatible laptop (Pentium class or higher)
- min. 32 MB RAM.
- min. 5 MB memory on hard drive
- Softing PROFicard (PCMCIA) or Softing PROFIBoard (ISA) Profibus Master card

2.1.2 Software

- Operating system Windows 95, 98, NT 4.0, or Windows 2000
- Softing Windows NT PROFIBUS Application Program Interface Version 5.22 (included on the CD)

2.2 Installation

Installation is done in two steps.

2.2.1 Installation of the Master card and the Profibus Application Program Interface

Please perform the installation according to the instructions of the "PROFicard Installation and Hardware User Manual" and the "PROFIBOARD User Manual".



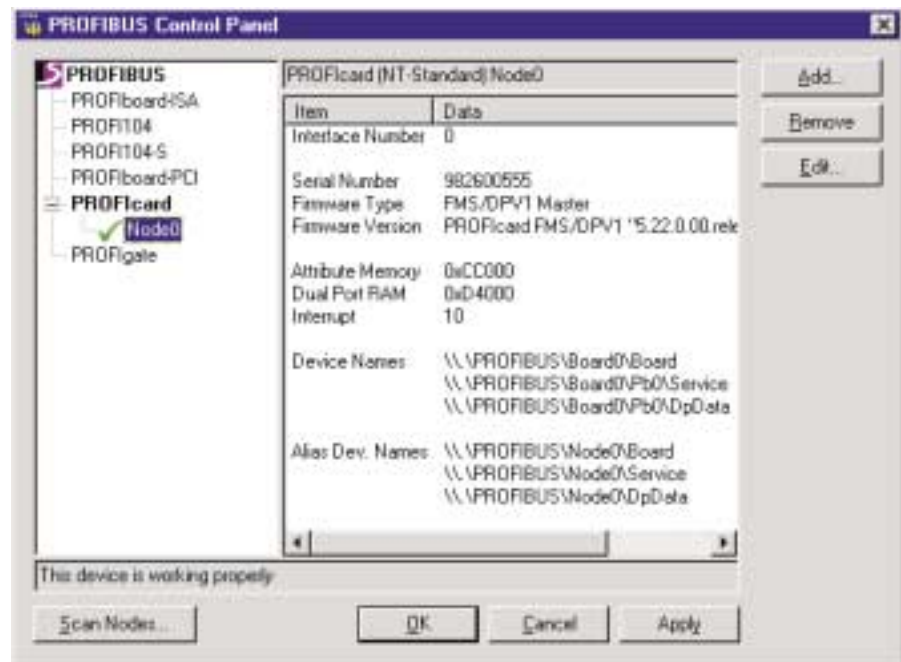
- **To be able to install the "Profibus Application Program Interface" the user must be logged in with the administrator password.**
- **The automatic setting of the interrupt does not always function when the Proficard is installed under Windows NT.**
We recommend to individually select a free interrupt.

After correct installation of the card the following program symbol should appear in the system control:



After a double-click on the symbol, the following window should open (Node0 checked):

Figure 1: PROFIBUS Control Panel, example: Toshiba CDT4010 CDT laptop



If a red cross instead of a green check mark is displayed, the settings of either the IO Port, the DP RAM address or the interrupt are not correct. In this case, please check the free resources of the computer with the program Windows NT diagnosis which can be started via "Start -> Programs -> Administration (general)".

2.2.2 Installation of the program DP-WIN

Insert the CD labelled DP-WIN Version 3.0 into the CD-ROM drive of the computer and start the program:



Afterwards please follow the instructions of the program

2.2.3 Starting the program

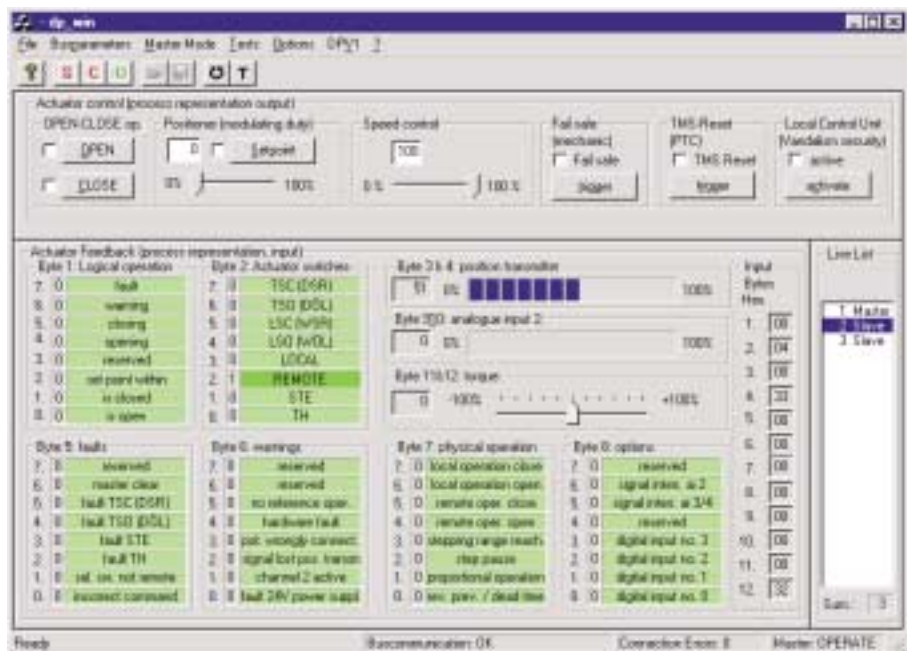
After installation, start the program DP-WIN by double-clicking on



under "Start -> Programs".

3. User interface

Figure 2: The user interface of DP-WIN



3.1 The menu bar

The menu bar offers the following options:

3.1.1 File

- **Exit:**
Closes the program.

3.1.2 Bus parameters

- **Master-Bus parameters:**
The other menu points can only be selected if the check box "Send GSD parameters" in this window is activated.
No GSD parameters are sent automatically to the actuator upon starting DP-Win Version 3.0.
This prevents the possible overwriting of a programming that was done via the acyclic services (e.g. with the PDM program).

- **Parameter save:**
All parameters set under the menu Bus parameters are saved.
- **Parameter load:**
The parameters are loaded and activated.

3.1.3 Master-Mode

With this menu it is possible to change the operation mode of the master. The following operation modes are possible:

- **Stop:** Master does only process level 2. Live list still works. Process representation is not transmitted.
- **Clear:** Master reads process representation input, but does not control actuator.
- **Operate:** Master reads process representation input and controls actuator. (normal operation mode)

3.1.4 Tests

- **Operating test:** Automatically conducts an operating test. Detailed description see clause 4.
- **Torque measurement:** For actuators with the option "Analogue torque value transmitted via Profibus" the torque can be monitored for the travel.

3.1.5 Options

Function second analogue input:

In this menu it is determined whether the second analogue input is used for measuring the torque (for actuators type AS) or as an external sensor.

3.1.6 DPV1

In this menu, acyclic communication services can be executed. They work together with the Software Z027.988A.

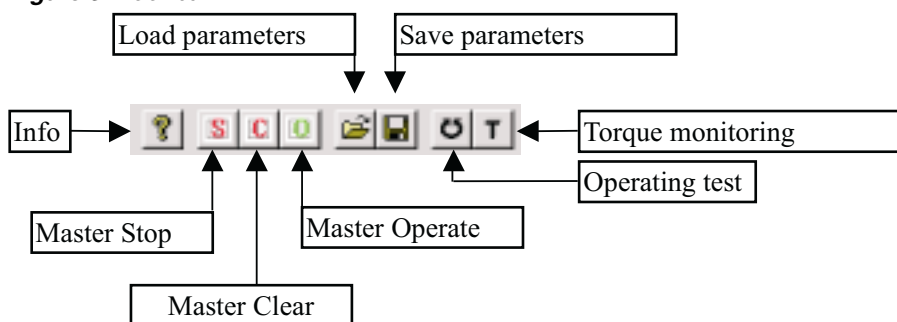
- **Read/ write:** grants access to different slots and indexes.
- **Electronic name plate:** grants access to the electronic name plate stored in the actuator
- **Operating data:** grants access to the operating data stored in the actuator
- **AUMA special:** grants access to some of the internal memory cells of the actuator
- **GSD data:** grants access to the GSD data stored in the actuator
- **Database:** for saving and loading of acyclic data. Requires an additional component.

3.1.7 The menu item "?"

Information on the program DP-Win can be found here.

3.2 The tool bar

Figure 3: Tool bar



3.2.1 Info

Here a short information about the DP-WIN program and the current version is displayed.

3.2.2 Master Stop

Puts the master in STOP-state.

In STOP-state, there is no communication between master and actuator, i.e. the master can neither control the actuator nor read data from the actuator.

3.2.3 Master Clear

Puts the master in CLEAR-state.

In CLEAR-state, the master only reads the data from the slave. But it can no longer control the slave. In this state, the actuator will perform a safety operation when it has been programmed accordingly.

3.2.4 Master Operate

Puts the master in OPERATE-state. It can then control the actuator again.

3.2.5 Save parameters

All parameters set under the menu Bus parameters are saved.

3.2.6 Load parameters

The parameters are loaded and activated.

3.2.7 Operating test

Clicking this button opens the window Operating test. Functionality of the actuator can be checked with the operating test. The operating test is described in detail in chapter 4.

3.2.8 Torque monitoring

For actuators with the option "Analogue torque value transmitted via Profibus" this tool makes it possible to monitor the torque for the travel.

3.3 The window Profibus stations (live list)

Figure 4: The window Profibus stations (live list)



This window shows the addresses of all stations connected to the Profibus. Furthermore, it is indicated whether the station is a master (control, e. g. PLC or PC) or a slave (e. g. AUMA actuator). Clicking a slave number will mark it. The program then controls the marked slave.

The main live list shows the total of all stations (including the master) of the bus. With this overview it is easy to check which stations are available within the bus.

If no slave is selected by the user after switching on, the slave with the smallest address will automatically be selected after 7 seconds.

If no stations are shown in the live list this may point to a short-circuit in the Profibus.

The program should then be started again without connection to the bus.

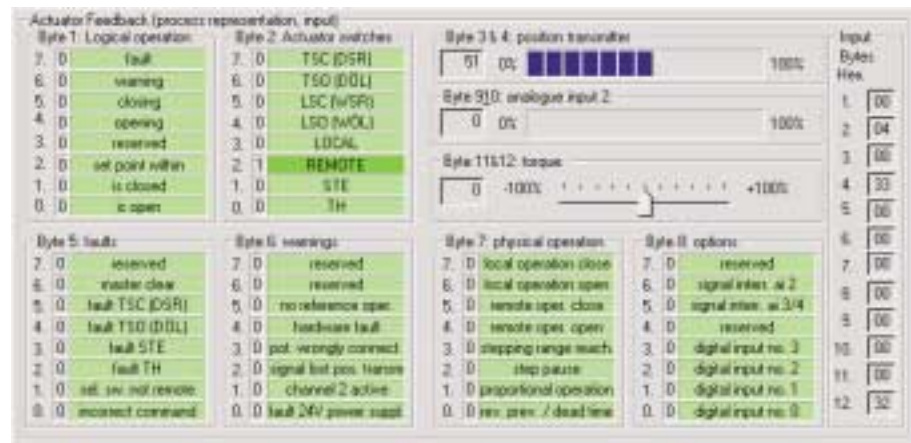
If the master is now shown as the only station, either the Profibus has a short-circuit or the bus termination is faulty (no voltage at bus termination).

3.4 The window Actuator status (process representation input)

This window displays the actuator's status sent by the actuator to the master.

If communication fails this window is not opened.

Figure 5: The window Actuator status (Process representation input)



The individual Bits in the process representation input are shown in different colours.

- light green: the Bit is not active (0)
- dark green: the Bit is active (1)
- red: the Bit is active (1). A fault or warning has occurred.
- light gray: with the present configuration the Bit is not transmitted.

In the field "Input Bytes hex." the individual input bytes are shown as hexadecimal figures.

The analogue values from the positioner and from the customer's analogue inputs are shown as decimal values and graphically as bars or sliding scales.

Setting for the code of measurement values (percent or per mil) of the AUMA parameters is automatically accounted for when displaying bars or sliding scales.

The meaning of the individual information is explained in the operation instructions for Profibus-DP actuators.

3.5 The window Actuator control (process representation output)

Figure 6: The window "Actuator control"



With this window, the actuator can be controlled. If communication fails this window is not opened.

With the buttons remote OPEN and remote CLOSE, the actuator can be operated in opening or closing direction.
With 'Set point' the modulating duty is switched on. The actuator now runs to the defined position.

The set point can either be set with the sliding scale or as a number in the box to the left of the sliding scale.

If a command is active this is shown by a check mark in the box to the left of the button.

Only one of the three commands REMOTE OPEN, REMOTE CLOSE or REMOTE NOMINAL can be active. If more than one command is active, the actuator signals the fault "incorrect command".

For adjustable speed actuators (e.g. AS or SARV with VARIOMATIC) the output speed of the actuator can be determined by the speed setting .

With the button "trigger fail safe" the fail safe function can be triggered in the ALS actuator equipped with mechanical fail safe function. With all other actuators this button has no function.

In actuators pre-equipped for this, the tripping device for the PTC thermistor can be reset with the button TMS Reset (PTC).

In actuators pre-equipped for this, the local controls can be released via the Profibus with the button Local Control Unit (Vandalism security).

3.6 The status bar

The status bar is divided into four fields.

The first field shows help texts for the buttons in the tool bar.

The second field shows the status of the bus communication.

The following indications are possible:

- Bus communication OK
No fault in the communication has occurred
- Fault: No connection to the slave
There is no communication with the slave.
Possible causes:
 - Bus cable open circuited.
 - Faults on the bus cable, e. g. due to incorrect bus termination.
 - Supply voltage is not available for the slave
- Fault: Slave is occupied by another master
Another master communicates in cycles with the slave. The other master has to be switched off in order to eliminate this fault.

- Fault: Faulty parameters
The parameters under the menu items
Bus parameters: Slave AUMA parameters / Slave Profibus parameters
are set incorrectly or contradictory.
- Fault: Incorrect configuration
The configuration set under the menu item Bus parameters: slave
configuration is not allowed (the version K10000x.DX.000 does not allow
all configurations).
- Error: no AUMA slave, Ident No. xxxx.
The selected slave is not an AUMA slave.
The DP-WIN program version 3.0 can only control and show the status of
AUMA slaves with the ident no. 0732 hex.

The third field shows the number of connection faults. This may be useful
for long-time tests and fault finding.

The fourth field shows the status of the master:

- If the master is in STOP-state, it does not communicate with the slave.
- If the master is in CLEAR-state, the actuator cannot be controlled, but the
feedback of the actuator is read.
- If the master is in OPERATE-state, it is totally operative.

4. Operating test

Correct operation of the actuator can be checked with the operating test.
The button Operating test can only be clicked if the communication to the
selected actuator is active.

On clicking the button Operating test, the following dialogue appears:

Figure 7: The dialogue operating test



The operating test is started after the button Start/Stop has been clicked. It
can be stopped by pressing the button Start/Stop again.
When starting the operating test the actuator first runs to completely closed.
The actuator then runs in direction OPEN until the end position CLOSED is
exited. If after 10 seconds the end position has not been exited, the
operating test will be stopped with a fault signal.
The actuator will then be operated from CLOSED to OPEN. In addition, the
operating time is determined.
Similar to the end position CLOSED, functionality of the signalisation of the
end positions (normally the microswitches) is tested for the end position
OPEN.

The actuator will then run to its original position.
After the operating test was performed without fault, the indication
'operating test successful' will be shown. If a fault occurs, the operating test
is interrupted and the cause of the fault is shown.
The field Operating time shows the operating time which was determined
during the last operating test.

If the box 'Repeating operating test cyclic' is selected, the actuator will on completion of the test not run to the original position. Instead the operating test will be repeated.

With the box 'pause time between two operating tests in sec' the time between the end of a operating test cycle and the start of the next cycle can be set.

5. Trouble shooting and corrective actions

When the program is started the following message can appear:

Figure 8: Start fault



Then the check the following points:

- Has the program DP-Win been started twice simultaneously?
If yes,
 - exit the DP-WIN program,
 - end the process dp_win.exe in the task manager
 - start DP-WIN again
 - or restart your computer.
- Is there a fault in the Profibus cable?
 - Pull out the Profibus plug from the master,
 - exit the DP-WIN program,
 - end the process dp_win.exe in the task manager
 - start DP-WIN again
 - or restart your computer.

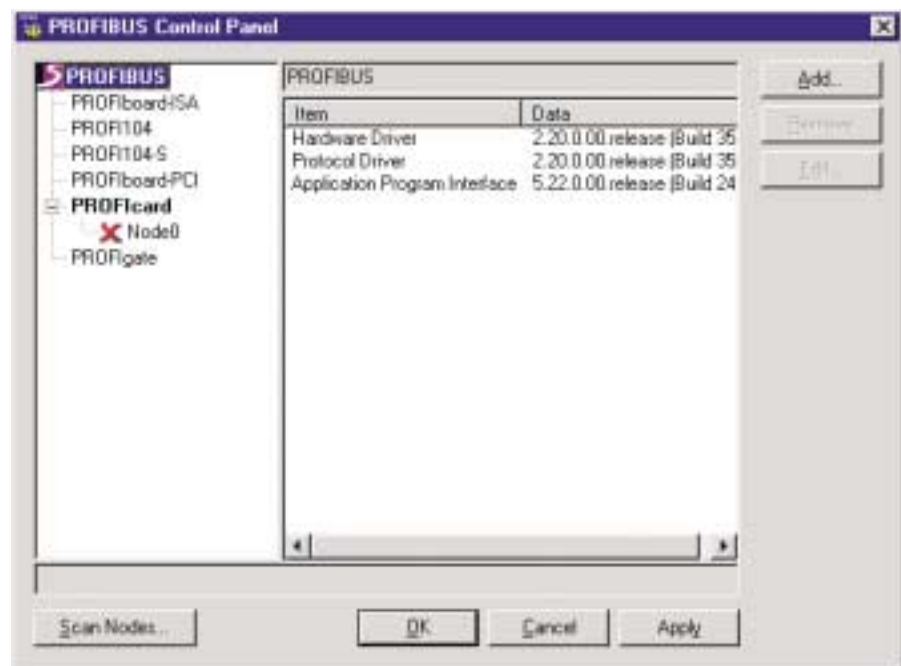
If the error message has now disappeard and the green LED on the Profibus Master card is illuminated, a fault has occurred (e.g. a short-circuit or no power at the termination resistances).

- Does the driver work:
 - Start the computer again without starting DP-WIN.
- After correct installation of the card the following program symbol should appear in the system control:



After a double-click on the symbol, the following window should open (Node0 checked):

Figure 9: PROFIBUS Control Panel when ProfiCard was incorrectly installed



Program DP-WIN must not be running!

If a red cross instead of a green check mark is displayed, the settings of the IO Port, the DP RAM address or the interrupt are probably not correct. In this case, please check the free resources of the computer with the program Windows NT diagnosis which can be started via "Start -> Programs -> Administration (general)" and change the settings of the ProfiCard with the button "Edit". For this you must be logged in as administrator.

Index

A		G		O	
Actuator status	8	GSD data	6	Operate	5
Addresses	7	H	3	Operating data	6
Analogue input	6			Operating test	7,10
AUMA special	6	I		R	
B		Info	6	Read/write	6
Bus parameters	5	Installation	3	S	
C		Introduction	3	Save parameters	6
Clear	5	L		Software	3
D		Load parameters	6	Status bar	9
Data management	6	M		Stop	5
E		Master Bus parameter	5	T	
Electronic name plate	6	Master Clear	6	Tool bar	6
F		Master-Mode	5	Torque monitoring	5,7
Functions	3	Master Operate	6	Trouble shooting	11
		Master Stop	6		

Deutschland / Germany

D	WERNER RIESTER GmbH & Co. KG Industriegebiet West Postfach 13 62 79373 Müllheim/Baden Tel +49 76 31 809-0 Fax +49 76 31 13 218 e-mail: Rieste@auma.com	D	WERNER RIESTER GmbH & Co. KG Service-Center Bayern Robert-Bosch-Strasse 14 85748 Garching-Hochbrück Tel 0 89 / 32 98 85-17 Fax 0 89 / 32 98 85-18 e-mail: Rieste@scb.auma.com	D	WERNER RIESTER GmbH & Co. KG Büro West Rathausplatz 7 45549 Sprockhövel Tel +49 23 39 92 12-0 Fax +49 23 39 92 12 15 e-mail: KettnerM@auma.com SuchhardtP@auma.com	D	WERNER RIESTER GmbH & Co. KG Büro Württemberg Postfach 11 51 73747 Ostfildern Tel +49 71 13 48 03 80 Fax +49 71 13 48 03 81 e-mail: KoeglerS@wof.auma.com
	WERNER RIESTER GmbH & Co. KG Postfach 11 51 73747 Ostfildern Tel +49 71 13 48 03-0 Fax +49 71 13 48 03 34 e-mail: Rieste@wof.auma.com		WERNER RIESTER GmbH & Co. KG Büro Nord Krelingen 150 29664 Walsrode Tel +49 51 67 504 Fax +49 51 67 565 e-mail: HandwerkerE@auma.com		WERNER RIESTER GmbH & Co. KG Büro Süd-West Mozartstr. 4 69488 Birkenau Tel +49 62 01 37 31 49 Fax +49 62 01 37 31 50 e-mail: WagnerD@auma.com		WERNER RIESTER GmbH & Co. KG Büro Bayern Kagerberg 12 93356 Teugn/Niederbayern Tel +49 94 05 94 10 24 Fax +49 94 05 94 10 25 e-mail: JochumM@auma.com
	WERNER RIESTER GmbH & Co. KG Service-Center Köln Mathias-Brüggen-Str. 164 50829 Köln Tel +49 22 15 97 72-0 Fax +49 22 15 97 72-19 e-mail: Service@sck.auma.com		WERNER RIESTER GmbH & Co. KG Büro Nord Bereich Schiffbau Tempowerkring 1 21079 Hamburg Tel +49 40 79 14 02 85 Fax +49 40 79 14 02 86 e-mail: DierksS@auma.com		WERNER RIESTER GmbH & Co. KG Büro Baden Postfach 13 62 79373 Müllheim/Baden Tel +49 76 31 80 91 93 Fax +49 76 31 80 92 94 e-mail: HenselR@auma.com		WERNER RIESTER GmbH & Co. KG Büro Ost Am Stadtberg 1 39167 Niedermödeleben Tel +49 39 20 47 59 80 Fax +49 39 20 47 59 89 e-mail: ZanderC@scm.auma.com
D	WERNER RIESTER GmbH & Co. KG Service-Center Magdeburg Am Stadtberg 1 39167 Niedermödeleben Tel +49 39 20 47 59-0 Fax +49 39 20 47 59-19 e-mail: Service@scm.auma.com						

Europa / Europe

A	AUMA Armaturentriebe Gesellschaft m.b.H. Betriebsgebiet Traiskirchen Süd Handelsstr. 14 2512 Tribuswinkel Tel +43 22 52 82 540 Fax +43 22 52 82 54 050 e-mail: office@auma.at	GB	AUMA ACTUATORS Ltd. Britannia Way Clevedon North Somerset BS21 6QH Tel +44 12 75 87 11 41 Fax +44 12 75 87 54 92 e-mail: auma@auma.co.uk	DK	GROENBECH & SOENNER A/S Scandlagade 25 2450 Copenhagen SV Tel +45 33 26 63 00 Fax +45 33 26 63 01 e-mail: GS@groenbech-sons.dk	S	ERICH'S ARMATUR AB Travbanegatan 8 Box 91 44 20039 Malmö Tel +46 40 31 15 50 Fax +46 40 94 55 15 e-mail: Ulf.Elousson@eriams.se
	AUMA (Schweiz) AG Chörrenmattstr. 43 8965 Berikon Tel +41 56 64 00 945 Fax +41 56 64 00 948 e-mail: RettichP.ch@auma.com		AUMA ITALIANA S.r.l. Via Don Luigi Sturzo, 29 20020 Lainate/Milano Tel +39 02 93 17 911 Fax +39 02 93 74 387 e-mail: info@auma.it		IBEROPLAN S.A. Marques de Hoyos, 10 28027 Madrid Tel +34 91 37 17 130 Fax +34 91 74 27 126 e-mail: iberoplan@iberoplan.com		MEGA Endüstri Kontrol Sistemleri Tic. Ltd. Sti. Cetin Emec Bulvarı 6.CAD 78.SK. 17/ 18 06460 Öveçler - Ankara Tel +90 31 24 78 08 13 Fax +90 31 24 78 08 31 e-mail: megaltd@escortnet.com
CH		I		E		TR	
CZ	AUMA Servopohony spol. s.r.o. Kazanská 121 10200 Praha 10 Tel +420 2 72 70 00 56 Fax +420 2 72 70 41 25 e-mail: auma-s@auma.cz	NL	AUMA BENELUX B.V. Le Pooleweg 9 2314 XT Leiden Tel +31 71 58 14 040 Fax +31 71 58 14 049 e-mail: office@benelux.auma.com	GR	D.G. Bellos & Co O.E. 64, Maisonos str. 10438 Athens Tel +30 15 22 38 48 Fax +30 15 23 22 46 e-mail: dgb@eexi.gr		
F	AUMA France 10 - 16 Rue Constantin Pecqueur Z.A.C. Les Châtagniers III 95157 Taverny Cédex Tel +33 13 93 27 272 Fax +33 13 93 21 755 e-mail: servocom@auma.fr	PL	AUMA Polska Sp. z o.o. Ul. Pukowca 15 40-816 Katowice Tel +48 32 25 05 412 Fax +48 32 25 05 412 e-mail: R.Ludzien@auma.com.pl	N	SIGURD SOERUM A.S. Jongsasveien 3 Postboks 85 1301 Sandvika Tel +47 67 57 26 00 Fax +47 67 57 26 10 e-mail: post@sigurd-sorum.no		
FIN	OY AUMATOR AB Plot 21 / Hyljekuja 5 02271 Espoo 27 Tel +358 95 84 02 022 Fax +358 95 84 02 300 e-mail: auma@aumator.fi	RUS	AUMA Moscow Representative Office 8/9, 1-y Tverskoy-Yamskoy pereulok, Moscow, 125047, Post Box 220 Tel: +7 095 973 29 43 Fax: +7 095 973 35 28 e-mail: georgeip@aha.ru		INDUSTRA Comércio de Equipamentos Industriais, Lda. Estrada de Albarraque 5 ^{ta} Centro Empresarial Sintra-Estoril Bloco A3-Linh 2710-297 Sintra Tel +351 2 19 10 95 00 Fax +351 2 19 10 95 95 e-mail: Industria@mail.telepac.pt		

Asien / Asia

IND	AUMA (INDIA) Ltd. Plot No. 39-B, II Phase Peenya Industrial Area Bangalore 560 058 Tel +91 80 83 94 655 Tlx 08 45 50 63 auma in Fax +91 80 83 92 809	UAE	AUMA Middle East Representative Office Sponsorship: Euro Mechanical P.O. Box 46153 Tourist Club Street Abu Dhabi Tel +971 26 44 92 43 Fax +971 26 44 85 61 e-mail: auma@emirates.net.ae	HK	PERFECT CONTROLS Ltd. Suite 202, Block 1, Hofai Commercial Centre 218 Sai Lau Kok Road Tsuen Wan, Kowloon, Hongkong Tel +852 24 93 77 26 Fax +852 24 16 37 63 e-mail: pctrltd@netvigator.com	RC	Top Advance Enterprises Ltd. 2nd Fl., No.32, Lane 308, Section 3, Ho-Ping East Road Taipei, Taiwan, R.O.C. Tel +886 2 2733 3530 Fax +886 2 2736 5526 e-mail: kyck3530@ms6.hinet.net
	AUMA JAPAN Co., Ltd. 596-4 Futago-Cho 273-0034 Funabashi-Shi Chiba Tel +81 47 30 29 551 Fax +81 47 30 29 555 e-mail: auma.jp@oregano.ocn.ne.jp		AUMA ACTUATORS (Singapore) Pte Ltd. 32, Ang Mo Kio Industrial Park 2 #01 - 02, Sing Industrial Complex Singapore 569510 Tel +65 48 18 750 Fax +65 48 18 269 e-mail: aumasing@mbox5singnet.com.sg		AL-ARFAJ Eng. Company W.L.L. P.O. Box 391 Salmiyah 22004 Tel +965 48 17 448 Fax +965 48 17 442 e-mail: arfaj@qualitynet.net		DONG WOO Valve Control Co., Ltd. Youi do P.O.Box 293 Seoul, Korea Tel +82 27 61 62 33 Fax +82 27 61 12 78 e-mail: dw7994@users.unitel.co.kr
J		SGP		KWT		ROK	
PRC	AUMA Beijing Representative Office Room 602, Yuanchenxin Building 12 Yumin Road, Madian Chaoyang District 100029 Beijing Tel +86 10 62 02 24 91 Fax +86 10 62 02 24 97 e-mail: AUMABS@ihw.com.cn			Q	BEHZAD Trading P.O. Box 11 23 Rayyan Road Doha, Qatar Tel +974 43 32 36 Fax +974 43 32 37	T	Sunny Valves and Intertrade Corp. Ltd. 232/ 13 Yen-A-Kart Soi 2 Yannawa, Bangkok 10120 Tel +66 22 40 06 56 Fax +66 22 40 10 95 e-mail: swvong@mozart.inet.co.th

Nord- und Südamerika / North and South America

USA	AUMA ACTUATORS INC. 4 Zesta Drive Pittsburgh, PA 15 205 Tel +1 41 27 87 13 40 Fax +1 41 27 87 12 23 e-mail: mailbox@auma-usa.com	CDN	TROY-ONTOR Inc. 230 Bayview Drive Unit 1A Barrie, Ontario L4N 5E9 Tel +1 41 66 14 12 10 Fax +1 41 70 57 21 58 51	BR	Asvotec Termointustrial Ltda. Rod. Cônego Cyriaco Scaranello Pires, Km 01 Monte Mor-Sp, CEP 13190-000 Tel: +55 19 3879-87 35 Fax: +55 19 3879 87 38 e-mail: adm@asvotec.com.br	RCH	DIN INSTRUMENTO Ind. Ltda. Avda.Holanda 2023 C.P.6651631 Casilla 335 Santiago de Chile Tel +562 20 50 100 Fax +562 222 58 139 e-mail: valvulas@dininstrumentos.cl

Australien / Australia

AUS	BARRON GJM Pty.Ltd. P.O.Box 792 Artarmon - NSW 1570 Tel +61 29 43 61 088 Fax +61 29 43 93 413 e-mail: info@barron.com.au
-----	---

Afrika / Africa

ZA	AUMA South Africa (Pty) Ltd. P.O.Box 12 83 Springs 1560 Tel +27 11 36 32 880 Fax +27 11 81 85 248 e-mail: auma-sa@cis.co.za
----	--

ET	A.T.E.C. 5, Road No. 101 Maadi Cairo - Egypt Tel +20 2 35 99 680 Fax +20 2 35 90 681 e-mail: ATEC@INTOUCH.com
----	--

Solutions for a world in motion.



Linear thrust units LE
with multi-turn actuators SA
Thrusts from 4 kN to 217 kN
Strokes up to 500 mm
Linear speeds
from 20 to 360 mm/min



Worm gearboxes with base and lever
GF 50.3 – GF 125.3
GF 160 – GF 250
Torques up to 32 000 Nm



Controls AUMA MATIC
with multi-turn actuators SA/ SAR
Torques from 10 to 1 000 Nm
Speeds from 4 to 180 min⁻¹



Part-turn actuators
AS 6 – AS 50
Torques from 25 to 500 Nm
Operating times for 90° from 4 to 90 s



Worm gearboxes
GS 40.3 – GS 125.3
GS 160 – GS 500
Torques up to 360 000 Nm



Multi-turn actuators
SA 07.1 – SA 16.1 / SA 25.1 – SA 48.1
Torques from 10 to 32 000 Nm
Output speeds from 4 to 180 min⁻¹



Part-turn actuators
SG 05.1 – SG 12.1
Torques from 100 to 1 200 Nm
Operating times for 90° from 4 to 180 s



Bevel gearboxes
GK 10.2 – GK 40.2
Torques up to 16 000 Nm



Spur gearboxes
GST 10.1 – GST 40.1
Torques up to 16 000 Nm

auma®

WERNER RIESTER GmbH & Co. KG
Armaturen- und Maschinenantriebe
P.O.Box 1362 • D - 79373 Müllheim
Tel +49 7631/809-0 • Fax +49 7631/13218
e-mail riester@auma.com
www.auma.com

auma®

WERNER RIESTER GmbH & Co. KG
Armaturen- und Maschinenantriebe
P.O. Box 1151 • D - 73747 Ostfildern
Tel +49 711/34803-0
Fax +49 711/34803-34



Certificate Registration No.
12 100 4269

Y001.328/003/en//1.01