

GCT-260



**Gardener's  
Choice™**



# GRASS TRIMMER USER MANUAL

Please read this instruction manual carefully  
before operating your new  
Gardener's Choice Grass Trimmer.

# Congratulations on choosing a Gardener's Choice Grass Trimmer.

Thank you for purchasing a Gardener's Choice 2-stroke Grass Trimmer. We are sure that you'll enjoy many years of trouble-free performance, plus you have the reassurance of a 12 month warranty.

Inside this guide you will find out all you need to know to correctly operate your new Gardener's Choice Grass Trimmer. To ensure that you use your new Grass Trimmer responsibly and get the best results possible, please read all of the safety and operating instructions carefully.

If after reading this user guide you have any questions on usage, safety, or any other issue, please call our Customer Help Line on **1800 466 068**.

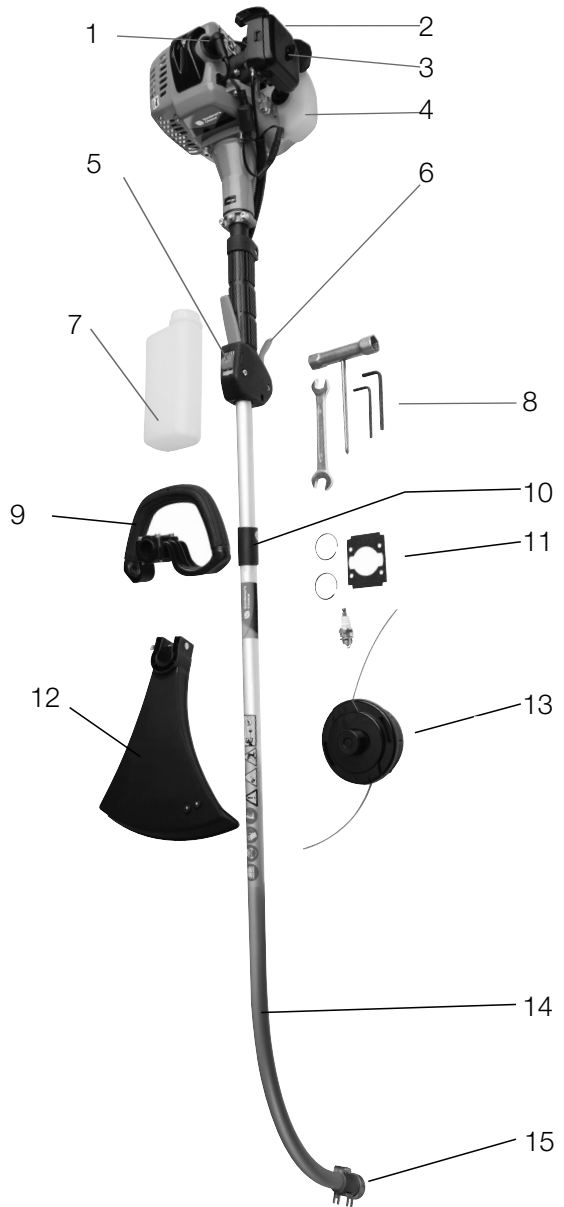
## Contents

Gardener's Choice Grass Trimmer features .....	3
Tips on Grass Trimmer safety.....	4
Attaching the handle .....	5
Attaching the safety guard .....	5
Attaching the trimmer head .....	5
Replacing trimmer line .....	6
Starting your Grass Trimmer .....	7
Technical specifications .....	8
Fast trouble shooting.....	9
Basic maintenance made easy .....	10
Contact Gardener's Choice Australia. ....	12

Gardener's Choice products are monitored and enhanced on an on-going basis to comply with changing technical standards and requirements. As a result, Gardener's Choice reserves the right to alter design and specifications at any time without prior notice.

# Grass Trimmer features.

1	Spark Plug
2	Choke Lever
3	Air Filter
4	Fuel Tank
5	Ignition Switch
6	Throttle Control
7	Fuel Mixing Bottle
8	Tool Kit
9	Ergonomic Handle
10	Sliding Sleeve
11	Spark plug and gasket set
12	Safety Guard
13	Line Trimmer Head
14	Bent Shaft
15	Gear Head



# Tips on Grass Trimmer safety.

**WARNING!** The information contained within this safety section is extremely important. Personal injury to the user and to others may result if this section is not read and acted upon at all times.

1. Before starting your Grass Trimmer, inspect it carefully to ensure that there are no loose parts and that it is in good working order.
2. Be sure of your footing. Always walk, never run, when operating the Grass Trimmer.
3. Clear the area of any stones, sticks, wire and debris before beginning, and always ensure that you operate your Grass Trimmer a safe distance away (over 14 metres) from adults, children and animals.
4. Keep hands, feet and clothing away from the Grass Trimmer's moving parts, and always wear appropriate footwear (avoid sandals or open shoes).
5. Never put your hands or feet underneath the guard of the Grass Trimmer while the engine is running.
6. Be aware that the machine's exhaust area and other parts of the Grass Trimmer get very hot during, and right after use.
7. Turn off the engine and disconnect the spark plug cap before cleaning, transporting or making adjustments.
8. We recommend you avoid trimming when it is raining, or after nightfall.
9. Do not fill the tank, or start the Grass Trimmer indoors, or in a poorly ventilated area, as exhaust gases contain poisonous substances and petrol fumes are flammable and dangerous.
10. Never open the fuel filler cap, or fill the tank, if the engine is still hot after use. And please ensure that you securely tighten the petrol cap after filling.
11. Do not transport the Grass Trimmer in a vehicle if there is any petrol in the tank.
12. Store fuel and oil in a cool well-ventilated place, away from direct sunlight and not near gas cylinders or hot water heater systems.
13. Do not smoke when filling the fuel tank, using the machine, or when petrol is in the immediate area. And never use or store the Grass Trimmer near a naked flame.
14. Gardener's Choice recommends that you wear ear protectors, safety goggles and safety boots when using a Grass Trimmer.
15. All servicing and repair work under warranty must be carried out by an Authorised Gardener's Choice Dealer, otherwise the 12 month warranty may be void.

## Attaching the handle.

Place the upper ergonomic handle (Figure 1) over the sliding sleeve in the desired position, then while holding the bottom plate in place underneath insert the screws and tighten with the allen key provided.



Figure 1.

## Attaching the safety guard.

While placing the Grass Trimmer on its back, clip the guard onto the shaft lining the holes up with the guides see (Figure 2) then locate the bolt through the guard and guide plate as indicated. Place the washer over the bolt and tighten wing nut.

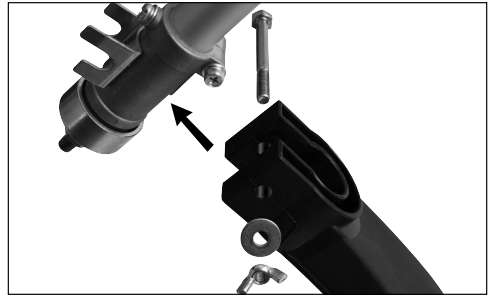


Figure 2.

## Attaching the trimmer head.

Insert the allen key provided into the hole on the gear head to stop it from rotating. Then wind the trimmer head **clockwise** onto the head (Figure 3).



Figure 3.

# Replacing trimmer line.

Take approximately 4-5 metres of 2.0-2.4mm diameter trimmer, fold in half to make a loop. Hold the spool as shown in (Figure 4) and hook the loop onto the divider plate as shown and wind the line, one on either side of the divider plate.



Figure 4.

Wind both lines **clockwise** on both sides of spool ensuring that both lines remain in their respective channels see (Figure 5).



Figure 5.

In order to stop the line from unravelling, slip each end into the lugs on the bottom edge of the spool see (Figure 6).

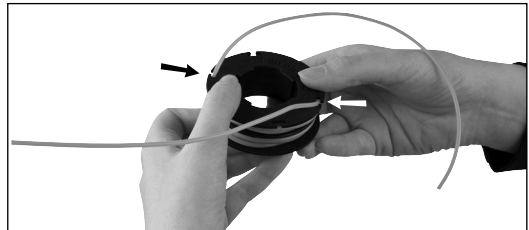


Figure 6.

Insert ends of lines through holes in side of spool casing and place the spool into the centre of the casing see (Figure 7).

When in position pull the ends further out of the casing.

Then return the lid, click into place and return to hub.

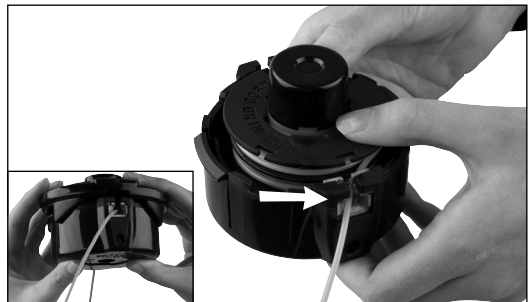


Figure 7.

# Starting your Grass Trimmer.

Before operating your Grass Trimmer, mix 25 parts of regular unleaded petrol to 1 part 2-stroke oil (25:1). Do not overfill the tank as this can risk fuel spilling on hot parts when in use.

Slide the ignition switch forward away from the STOP position (*Figure 8*).

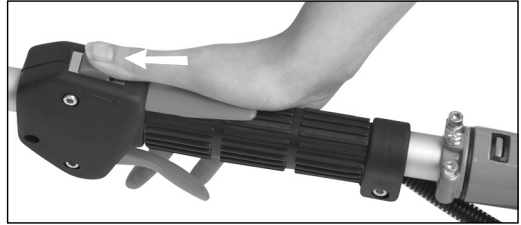


Figure 8.

Press primer bulb three or four times until a flow of fuel is visible inside the fuel line (*Figure 9*).

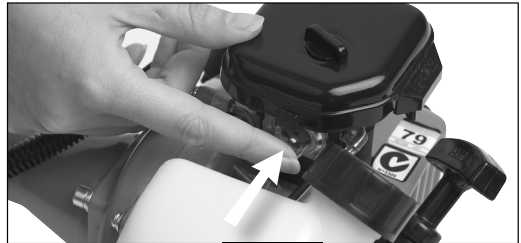

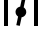


Figure 9.

Set choke lever into  closed position if starting from cold (*Figure 10*).

Pull the starter cord until the Grass Trimmer starts (or sounds like it wants to start) then return choke to  open position.

After it starts, allow the engine to warm up for at least 20 to 30 seconds.

For warm restarts, do not prime, just pull the cord and it will start after one or more pulls.



Figure 10.

**To stop the engine, simply move the ignition switch back to the STOP position (*Figure 11*).**

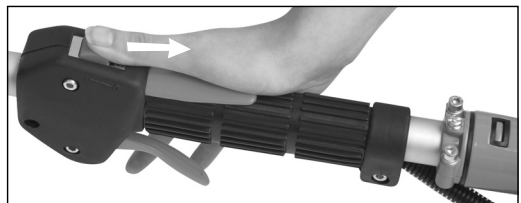


Figure 11.

# Technical specifications.

<b>Model number</b>	<b>GCT260</b>
Drive train	Auto clutch, spiralbevel gear, flexible shaft
Reduction gear ratio	1:1
Engine type	2-stroke vertical piston valve
Engine model	1E34F petrol engine
Fuel mix	25:1 unleaded petrol to 2-stroke oil
Engine idling speed	2,800rpm
Engine power	0.71kW@6,000rpm
Spark plug type	NGK BPMR7A
Spark plug gap	0.6 to 0.7 mm
Length of main pipe	1520 mm
Length of drive shaft	1375 mm
Fuel tank capacity	600ml
Length of line out of hub	100-150 mm
Noise level	79dBA
Dry weight	4.4kg
Warranty	1 year domestic warranty



# Fast trouble shooting.

Often, a depleted, loose, or dirty spark plug is responsible for a Grass Trimmer not being able to start, but there can be a number of other reasons. Refer below to the list of potential problems you may encounter, along with suggested remedies.

For servicing and all warranty work, contact your local Authorised Gardener's Choice Dealer.

<b>Problem</b>	<b>Likely cause</b>	<b>Suggested remedy</b>
Engine does not start	<ul style="list-style-type: none"> <li>Out, or almost out, of fuel</li> <li>Spark plug dirty</li> <li>Spark plug not connected</li> <li>Fuel older than 3 months</li> <li>Water in the fuel tank</li> </ul>	<ul style="list-style-type: none"> <li>Fill tank with fresh 2 stroke fuel (25:1)</li> <li>Clean or replace with a new spark plug</li> <li>Press firmly on the terminal cover</li> <li>Drain stale fuel and replace with fresh 2 stroke fuel</li> <li>Contact an authorised Gardener's Choice dealer</li> </ul>
Engine stops often	<ul style="list-style-type: none"> <li>Blocked fuel supply</li> <li>Fuel cap is not venting</li> <li>Incorrect type of fuel</li> </ul>	<ul style="list-style-type: none"> <li>Ensure the fuel line is not pinched or blocked</li> <li>Ensure vent hole in the fuel tank cap is clear</li> <li>Drain tank and fill with 2 stroke fuel (25:1)</li> </ul>
Engine loses power	<ul style="list-style-type: none"> <li>Dirty air cleaner filter</li> <li>Blocked fuel cap vent holes</li> </ul>	<ul style="list-style-type: none"> <li>Clean or replace with a new Gardener's Choice air-filter</li> <li>Ensure vent hole in the fuel tank cap is clear</li> </ul>
Too much vibration	<ul style="list-style-type: none"> <li>Loose line trimmer head</li> </ul>	<ul style="list-style-type: none"> <li>Check and tighten bolts and nuts accordingly</li> </ul>

# Basic maintenance made easy.

**WARNING! If the Grass Trimmer is not serviced correctly, you could void warranty and reduce its ability to operate effectively.**

## 1. Spark plug.

Wait until the engine has cooled before disconnecting the spark plug cover and then removing the spark plug with the box spanner supplied. If it is dirty, you can clean the plug with a wire brush.

The applicable spark plug for this machine is the NGK BPMR7A. For optimum results we advise you to replace the spark plug after 20 hours of use.

When refitting the spark plug take care not to over-tighten. If adjusting yourself, note that the spark plug gap must be set initially to 0.6 see (*Figure 12*) but after the machine has been used for some time, regulate the gap to 0.7 mm.

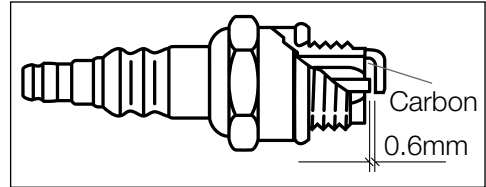


Figure 12.

## 2. Air filter.

Ensure that the engine is cool, remove the air filter cover and then take out the air filter element, see (*Figure 13*). Put the cover back on the housing immediately to prevent any objects falling into the air intake.

Carefully brush off any excess dirt particles, or clean filter element using lukewarm soapy water. When cleaning with water, rinse thoroughly and allow to dry before replacing air filter element.



Figure 13.

### 3. Storing petrol and oil.

**WARNING! Petrol is highly flammable so extreme caution must be taken. Always store petrol in approved containers and ensure petrol is less than three months old.**

#### Notes

---

---

---

---

---

---

---

---

---

---

---

---

---

---

---

---

---

---

---

---

---

---

---

---

---

---

---

---

---



**Gardener's  
Choice™**

© KMART AUSTRALIA LTD 2009

GARDENER'S CHOICE AND THE GARDENER'S CHOICE LOGO ARE TRADE MARKS OF KMART AUSTRALIA LTD. THEY ARE USED IN NEW ZEALAND BY COLES GROUP NEW ZEALAND HOLDINGS TRADING AS KMART NEW ZEALAND.

KMART AUSTRALIA LTD 690 SPRINGVALE ROAD MULGRAVE VICTORIA 3170 AUSTRALIA  
KMART NEW ZEALAND REGIONAL OFFICE C/O KMART PAPATOETOE STORE HUNTERS PLAZA  
GREAT SOUTH ROAD PAPATOETOE AUCKLAND NEW ZEALAND.

CALL THE GARDENER'S CHOICE CUSTOMER SERVICE DESK ON 1800 466 068  
EMAIL: [SUPPORT@SANLI.COM.AU](mailto:SUPPORT@SANLI.COM.AU)