

Music Categories

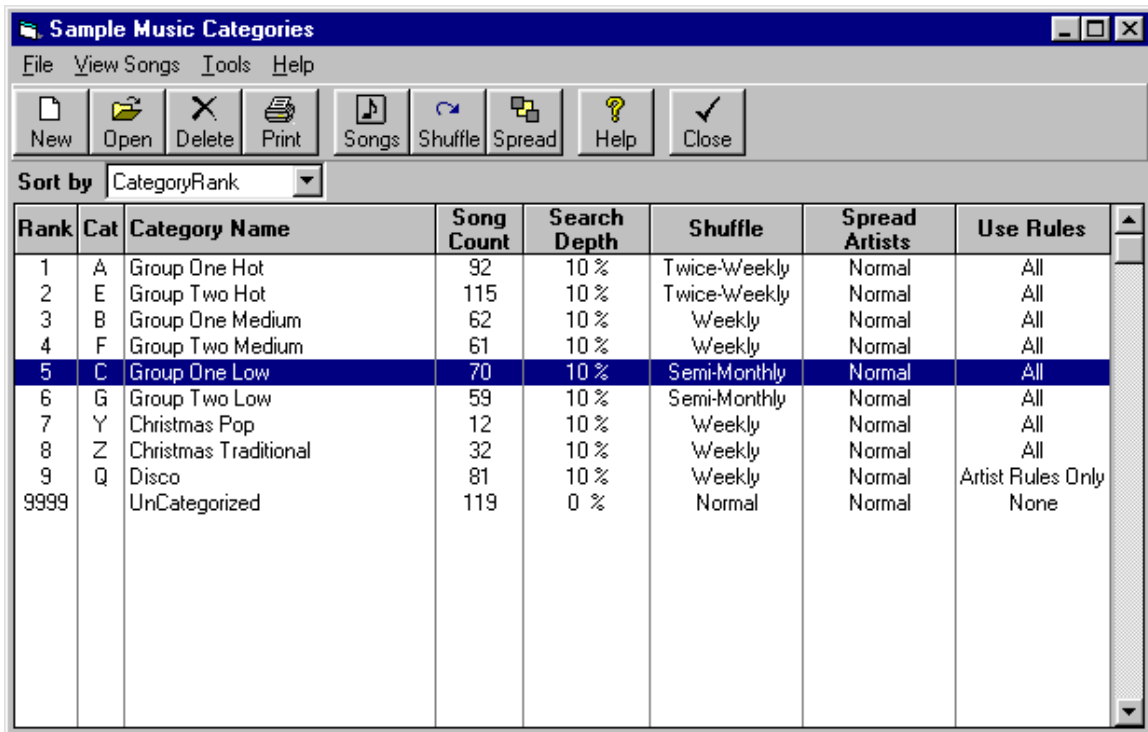
Music Categories Defined

Music Categories allow you to control the amount of the various type(s) of music your system schedules. Each slot on a Format Clock is plotted from the Music Category specified for that Format Clock slot. How you define your Music Categories is up to you and depends heavily on your format:

- § CHR stations might define Music Categories as Hot-Currents, Medium-Currents, Recurrents.
- § An oldies station might define their Music Categories as 50's, 60's, 70's, and 80's.
- § A Christian music station might categorize their music as Contemporary, Southern Gospel, etc.

Music Category Identifiers

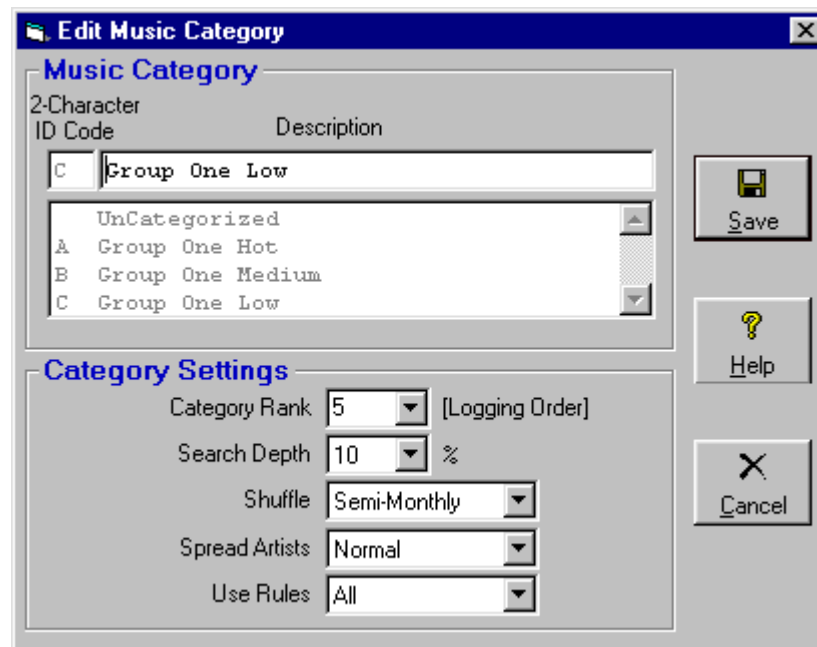
Music Categories are identified by combinations of 1 or 2 letters or numbers such as A, 1,A1, AA.



Rank	Cat	Category Name	Song Count	Search Depth	Shuffle	Spread Artists	Use Rules
1	A	Group One Hot	92	10 %	Twice-Weekly	Normal	All
2	E	Group Two Hot	115	10 %	Twice-Weekly	Normal	All
3	B	Group One Medium	62	10 %	Weekly	Normal	All
4	F	Group Two Medium	61	10 %	Weekly	Normal	All
5	C	Group One Low	70	10 %	Semi-Monthly	Normal	All
6	G	Group Two Low	59	10 %	Semi-Monthly	Normal	All
7	Y	Christmas Pop	12	10 %	Weekly	Normal	All
8	Z	Christmas Traditional	32	10 %	Weekly	Normal	All
9	Q	Disco	81	10 %	Weekly	Normal	Artist Rules Only
9999		Uncategorized	119	0 %	Normal	Normal	None

To change any settings for a Music Category, highlight the Category and click **[Open]** and you will see the Music category Edit screen shown on the next page.

Music Categories (cont)



Category Rank

Natural Music creates a Music Log by plotting songs into the Format Clocks for each Music Category in the order the Music Categories are shown in [\[Setup\]\[Music Codes\]\[Music Categories\]](#). It plots all songs for one Music Category for the entire day before going to the next Category. You may select a Rank number on the screen shown above OR Drag and Drop the Music Categories into your desired logging order on the screen shown on the previous page. Remember:

- § **Fast Rotating and Small Music Categories** Rank your fast rotating Music Categories first so they log first. Songs from early Music Categories are less likely to be precluded by rule violations.
- § **Slower Rotating and Larger Music Categories** As the Music Log is filled, more Rule violations occur, so your large Music categories should be logged last so Natural Music will have a large selection of songs to "fill in" around the already-logged songs while complying with your Rules.

Search Depth

This determines how deep into a Music Category stack Natural Music will dig trying to find a song that meets all of your Rules. If Natural Music finds an acceptable song between the top of the category stack and the Search Depth, it uses the song. Then that song is moved to the back of the category stack, and all the songs in the category move up one slot in the stack. Setting the Search Depth is a tradeoff between conflicting goals. Use **10%** as a starting point until you get the hang of it.

- § **Large Search Depths** make it *less* likely you are going to have "missed songs" to fill in during Music Log editing, but you are *more* likely to have a song repeat too soon due to Natural Music searching deep in the category stack for a non-Rule-violating song. Large search depths also result in long search times and slower Music Log generation.
- § **Small Search Depths** make it *more* likely you are going to have "missed songs" which you have to log during Music Log Editing, but you are *less* likely to have songs repeat too soon. The Natural Music system search won't search too deep in the category stack for a non-Rule-violating song, but will give up and mark it as a "missed song".

Music Categories (cont)

Shuffle

You may automatically shuffle the songs in a Music Category on a pre-determined schedule. This may be set to **Normal** [which is the recommended value], in which case no automatic shuffling occurs. If you do decide to use automatic shuffling, to determine which shuffle frequency is right for each Music Category, you need to know how often that Music Category repeats songs. Use the [\[Tools\]\[Format Analysis\]](#) and check the **Individual Song--Avg Rot Hours** column to determine how often songs in a Music Category repeat. Then apply the following guidelines

- § **Daily Shuffling** automatically shuffles songs in this Music Category every day. Use this only on "current" Music Categories that repeat more than once per day.
- § **Twice-Weekly Shuffling** automatically shuffles songs in this Music Category before creating Music Logs for Monday and Thursday. Use for Music Categories that repeat in 1 to 3 days.
- § **Weekly Shuffling** automatically shuffles songs in this Music Category every Monday before creating the Monday Music Log. Use for any Music Category that repeats in 3 to 7 days.
- § **Semi-Monthly Shuffling** automatically shuffles songs in this Music Category before creating the Music Logs on the 1st and 15th days of each month. Use for Music Categories that repeat in 7 to 15 days.
- § **Monthly Shuffling** automatically shuffles songs in this Music Category before creating the Music Log for the 1st day of the month. Use this for any Music Category that repeats in 15 to 30 days.

Shuffle Warning

You can cause serious music rotation problems by using incorrect shuffling of Music Categories. As a general rule, shuffle a category less often than it rotates.

Examples:

- § Assume your Gold 1 category will repeat in about 3 days. You'd never want to shuffle this category more often than twice a week (approximately every 3 days).
- § Your Hot-Currents and Re-Currents probably repeat at least once-per-day, so they can probably be shuffled daily.

Manual Shuffle

You can manually shuffle the songs in a Music Category at any time by highlighting the Music Category and clicking the [\[Shuffle\]](#) button in [\[Setup\]\[Music Codes\]\[Music Categories\]](#).

1. **Standard** This breaks the category up into 10 partitions and shuffles only within each partition. This provides some song shuffling but also keeps the recently-played songs from moving up to the top of the category.
2. **Deep Shuffle** This shuffles all songs within the category and may cause some recently-played songs to pop up to the top of the category and some that haven't played to the bottom of the category. This might be useful if you added a bunch of new songs and you'd like to spread them out in the category.

Music Categories (cont)

Spread Artists in Category

Sometimes one or more songs from one or more Artists may become bunched together in a Music Category. Natural Music has a Spread Artist function. You may automatically spread artists' songs out in a Music category on a pre-determined schedule. This may be set to **Normal** [which is the recommended value], in which case no automatic Artist-Spreading occurs.

- § **Daily**
- § **Twice-Weekly** Monday and Thursday.
- § **Weekly Shuffling** Every Monday
- § **Semi-Monthly Shuffling** 1st and 15th days of each month
- § **Monthly Shuffling** 1st day of the month

Spread Artist Warning

The Spread-Artist function has nothing to do with artist separation rules...it simply re-separates artists' songs in the category stack after they have bunched up due to multiple artist separation rule violations. See Chapter 4 of this manual to for artist separation rules.

Do not schedule this automatic function to occur very often as it can cause very uneven rotation of songs if used too much. It is best not to use this automatic feature but instead run the Manual-Spread-Artists function described below only when you see many songs from one artist bunching up together in a category. **The artist "bunching" only occurs after 4 or more complete rotations of the music category so never use this spread-artist function before a category has rotated 4 times.**

If you schedule this function to occur too often an Artist with many songs would have his songs spread out have in the Music Category and they would not rotate to the top as evenly as another artist with fewer songs.

Manual Spread Artists

You can manually spread all artists' songs in a Music Category at any time by highlighting the Music Category and clicking the **[Spread Artists]** button in **[Setup][Music Codes][Music Categories]**.

Use Rules

This allows you to tell the system to turn music code rule tests *OFF* and/or Artist Separation rule tests *OFF* for a particular category. This can be useful for hot rotating current categories that you want to be logged in the exact order in which they appear in the category without regard to music rule violations. Your choices are:

- § **All** Recommended! This will consider all rules when logging music for this category.
- § **Artist Rules Only** This turns music flow testing off, but the system will consider the *Artist Separation* rules only. It will not consider music flow rules such as Gender, Tempo, Intensity, Mood, Style, Other, and Also-Protect. Daypart Protection rules are always used even if you enter *Artist Rules Only* here.
- § **No Artist Rules** This turns Artist Rules off but leaves all other music flow testing ON and might be useful for Jingles, Sweepers, etc. It will consider music flow rules such as Gender, Tempo, Intensity, Mood, Style, or Other. Daypart Protection rules are always used even if you enter *No Artist Rules* here.
- § **None** This turns music flow rule tests off, including Artist Separation, AlsoProtect, Gender, Tempo, Intensity, Mood, Style, Other and Also-Protect. Daypart Protection rules are always used even if you enter *None* here.

Music Categories Format Analysis

[Tools][Format Analysis] will provide you with an analysis of your Music Category rotations based on:

- § Your Music Category song assignments
- § Your Format Clock setup and assignments
- § The Selected Clock Assignment Grid

ID	Category Name	Song Count	Song Repeats per Week	Average Song Rotation Hours	Average Category Songs Per Hour	Category % of Total Clocks	Avg Song Length
U	Holiday	2					03:26
A	Group One Hot	148	6.5	26.0	5.7	27%	02:39
E	Group Two Hot	144	3.6	47.3	3.0	15%	02:39
B	Group One Medium	244	2.8	60.3	4.0	19%	02:48
F	Group Two Medium	267	2.2	75.5	3.5	17%	02:48
C	Group One Low	83	5.8	29.1	2.9	14%	02:57
G	Group Two Low	142	2.0	82.8	1.7	8%	02:52
Y	Christmas Pop	12					02:36
Z	Christmas Traditional	42					02:56
V	Cruising Classic	100					02:34
Q	Disco	81	0.1	2268.0	0.0	0%	03:43
P	Possibilities	42					03:18

Analyze using Clock Assignment Grid

Print Help Close

Song Repeats per Week This is the number of times a song in this Music category will repeat in a week.

Average Song Rotation Hours The average number of hours before a song in this Music category repeats.

Average Category Songs per Hour The average number of times per hour this Music category is scheduled on all clocks in use.

Category % of Total Clocks The percent of total songs scheduled in a week that are from this Music Category.

Average Song Length This is the average length for all songs in each Music Category.

Music Categories Library Analysis

[Tools][Library Analysis] will provide you with an analysis of the Music Coding of your entire Music Library or individual Music Categories. This will show what % or song count exists in your music library for each *Gender*, *Tempo*, *Intensity*, *Mood*, *Style*, and *Other* code.

- § You may select the display in % or an actual song count in the Display window. The display will switch to % or song count without the need to click [ReAnalyze]
- § You may also restrict the analysis to certain Music Category(s). Note: after selecting the Music Category(s), you must click the [ReAnalyze] button to recompute the analysis using your Music Category selections.

The screenshot shows a software window titled "Sample Library Analysis". At the top, there are tabs for "Style", "Other", "Tempo", "Intensity", and "Mood", with "Tempo" currently selected. Below the tabs is a table titled "Tempo Analysis" with the following data:

Code	Description	Total	Male	Fem	Duet	Group	Instr	Unspec
		10%	6%	2%		0%	1%	1%
1	Slow	5%	4%	1%		1%	0%	0%
2	Medium-Slow	22%	16%	4%	0%	1%	1%	1%
3	Medium	42%	29%	7%	0%	2%	1%	2%
4	Medium-Fast	18%	13%	2%	0%	1%	0%	1%
5	Fast	3%	2%	0%		1%	0%	0%

Below the table, there are two main sections: "Music Categories" and "Display".

Music Categories: Includes radio buttons for "All Music Categories" (selected) and "Selected Music Categories". A list box shows "UnCategorized" selected, with other options: "A Group One Hot", "B Group One Medium", and "C Group One Low".

Display: Includes radio buttons for "Percent of Total Songs" (selected) and "Song Count".

At the bottom right, there are three buttons: "Print", "Help", and "Close".

On the right side of the window, it says "1884 Songs Analyzed".