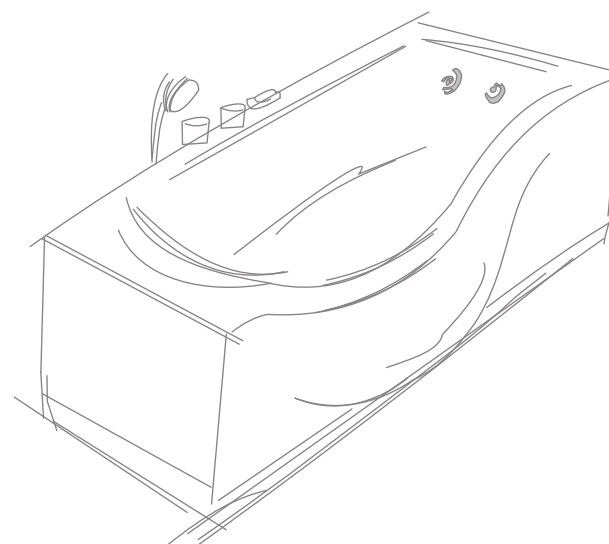


USER'S MANUAL



ACRYLIC MASSAGE BATHEUB

CONTENTS

Please read carefully before using ▼

★ SAFETY NOTICE

- ▶ [Safety statement](#)
- ▶ [Installation and operation instruction](#)
- ▶ [Trouble shootig](#)
- ▶ [Maintenance](#)
- ▶ [Water pump installation and operation instruction](#)

The creepage overload protector should be installed in the power supply.

The crust earth wire of the water pump should be well earthed.

It is forbidden to use the machine after having alcohol dring or hypnotic medicine.

The children should be accompanied by their parents when using the machine.

The parameters of the massage bathtub:

1.The steam generator: the rated working voltage is :

☐ Ac220V.

☐ Ac110V.

2.Frequency is:

☐ 50Hz.

☐ 60Hz.

Water pump : power750W

Transformer: transformation9V power20W

The pool bottom lamp:voltage AC12V power20W

The pump flux:20 stere/hour

1.The applicable range of the voltage:

Ac187V-256V

Ac100V-115V

Message bathtub water flow control principle illustration ▼

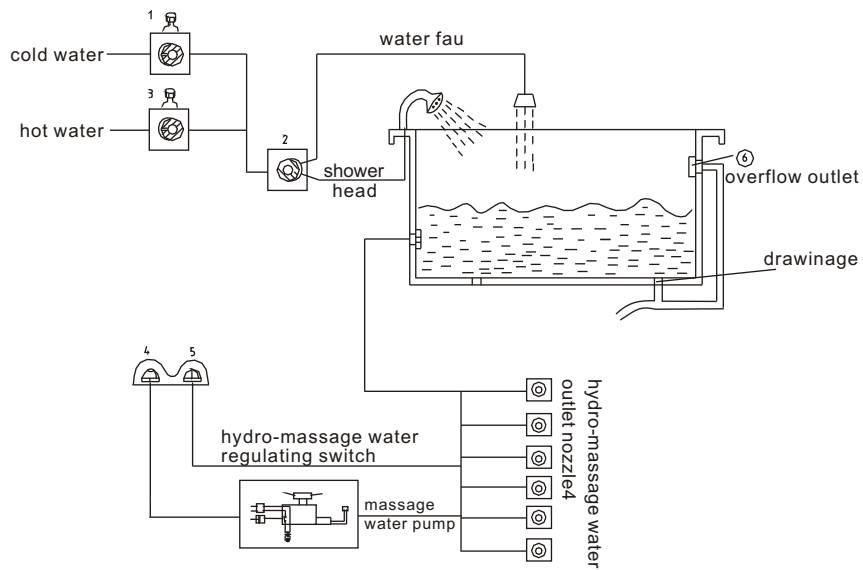
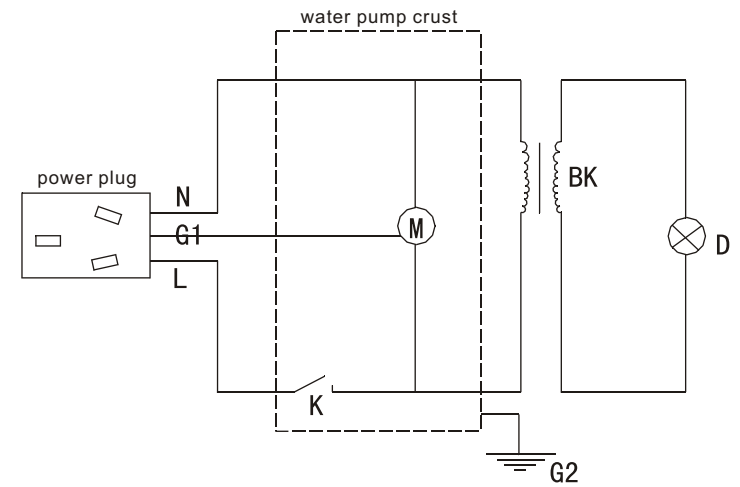
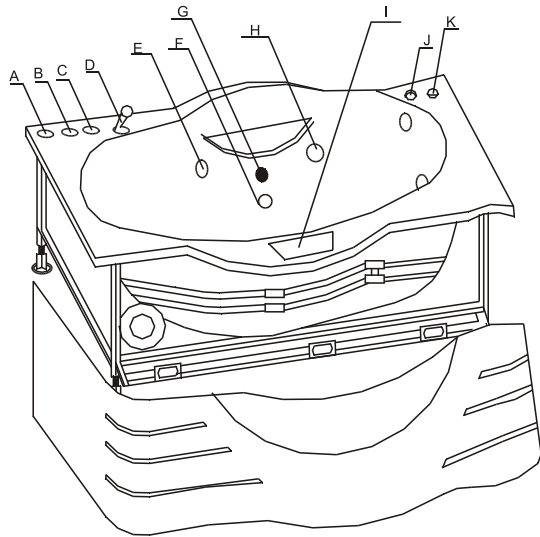


Illustration of the electric principle of massage bathtub ▼



- M: massage water pump
- k: pneumatic switch
- Bk: transformer
- D: bottom lamp
- G1: the earth wire of water pump plug
- G2: the earth wire of water pump crust

Fittings explanation ▼



The operation instruction ▼

- 1.A,B are cold and hot water control valves.They can be turned on at the same time to adjust the water temperature.Then B can be used to choose to use shower head(D) or water outlet(I).
- 2.J is pneumatic switch. It turned on/off the water pump and bottom lamp at the same time. When the water pump is turned on, hydro-massage water comes out from the nozzles (E). Water flows back through the net thus it begins to circulate. K is regulating switch controlling the power of the hydro-massage water.
- 3.F is the drainage switch, which is used to drain the water.
- 4.H is the bottom lamp which makes it more convenient to use at night and beautify the enironment.



A. hot water control valve



B. water distribution control valve



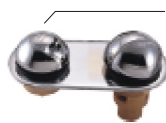
D. show head



I. water outlet



E. hydro-massage water outlet nozzle



J. water pump switch



F. drainage switch



G. water outlet net

K. hydro-massage switch

H. bottom lamp

Maintenance ▼

1. Temperature

The massage bathtub is suitable for water below 80°C. When using it, turn on the cold water before turning on the hot water.

2. Maintenance

Maintenance of plated parts: Please use flannel to rub them gently. Don't use rough cloth to rub them.

Maintenance of the bathtub body: When scratches appear, 1500 # sand paper can be used to rub it. Then polish the tub by toothpaste and flannel.

How to clean the net: Unscrew the net and remove it. Clean the net to make the water flow smoothly. Do not use strongly corrosive chemical liquid (e.g. - vitriol, muriatic acid or lye) to rub the net.

3. Installation:

First adjust the screws so that they reach the ground. Then make the bathtub level and fasten the screws. Fixing the four legs of the steel stand to reduce the vibration of pump. To prevent the pump or steel stand from translocation after long time use, rubber or some flexible material can be used as shockproof cushion. Seal the gap between the bathtub and the wall with glue. Please note that the drainage tube can not be folded.

4. Prepare to use:

Please make the water level reach normal height (usually 10cm higher than the nozzles), to prevent the pump from working without water. The direction of the nozzles can be adjusted to your mind.

5. Special notice:

When installing the bathtub, please make sure the metal parts are well earthed. The creepage overload protector should be installed in the power supply wire.

6. Note:

Before connecting the water pipe to the water inlet valve of the bathtub, please eliminate the impurities in the pipe such as rust. Take care not to damage the valve core.

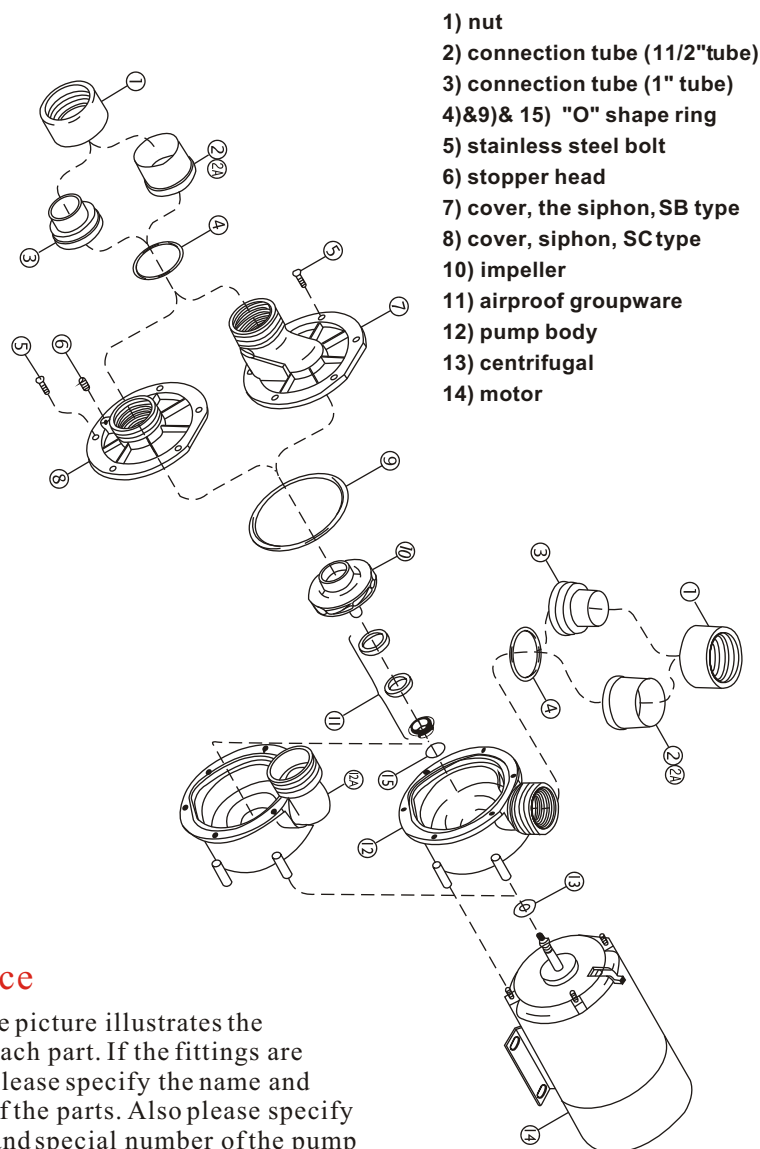
Trouble shooting



phenomenon	reason	how to solve
Violent vibration and too much noise	<ol style="list-style-type: none"> 1.The steel stand under the bathtub is not balanced. The screws are not fastened. 2. The fastening screw or the shockproof glue of the motor are incomplete or loose; 3. The water level does not reach the normal height. 4. There is something with wrong the motor. 	<ol style="list-style-type: none"> 1.Put the bathtub flatly on the floor and adjust the screws to make the steel stand level. Fasten the screws. 2. Normally, there should be four and four shockproof cushions to fix the motor. Fasten the loosen screws. 3.The normal height of the water level should be 10cm higher than the metal parts of the nozzles.
The motor works normally but no water comes out from the nozzles or the water pressure is not high enough.	<ol style="list-style-type: none"> 1. The not is partly jammed. 2. The water level is too low; 3. The hydro-massage water regulating switch is turned off . 4. Other reasons. 	<ol style="list-style-type: none"> 14.Dismantle the net and clean it to make the water flow smooth. 15.Increase the water level to normal height (10cm higher than all the nozzles). 16. Turn on the hydro-massage water regulating switch.
The motor of the massage bath tub can not be started.	<ol style="list-style-type: none"> 1. The voltage is abnormal or the power is off; 2. The fuse is cut off the creepage switch is off; 3.The pipe connecting the pneumatic switch to the motor falls off or blows. 4. The pneumatic switch is broken. 	<ol style="list-style-type: none"> 1. a)Turn on the power;b) Insert the motor power plug into the special socket; 2.Ask a technician to check whether there is something wrong. If nothing wrong replace the fuse or turn on the creepage overload protector. 3.Get the plastic pipe connected or replace it. 4. Ask an electrician to replace the pneumatic switch.

phenomenon	reason	how to solve
The bottom lamp does not work.	<ol style="list-style-type: none"> 1. The water pump works but the lamp doesn't <ul style="list-style-type: none"> a). The bulb is broken b).The connection line breaks off c).The transformer is broken 2. Neither the pump nor the lamp works. 	<ol style="list-style-type: none"> 1. a).Replace the bulb; b).Get the line connected. c).Replace the transformer 2. Check the massage motor following the process when the motor can not be started.
The water distribution pump can not be turned completely.	The rubber ring in the valve is distorted or worn out .	Replace it.
The cold and hot water valve can not be inlet turned completely.	The magnetic core is worn out.	Replace it.
The crystal hand-wheel is loose.		Press the screws on the top of the wheel and screw them clockwise.
The drainer can not jump up, or leaks.	<ol style="list-style-type: none"> 1. The screw is loosen or adjusted too low; 2. The drainer's drawing cable is broken. 3. The cushion is uneven. 	<ol style="list-style-type: none"> 1. Put off the drainer's stopper screw it or adjust the screw to suitable position. 2. Replace the whole set. 3. Dismantle the drainer then adjust it to be even reinstall it.

The water pump installation ▼



★ Notice

The above picture illustrates the name of each part. If the fittings are needed, please specify the name and number of the parts. Also please specify the type and special number of the pump which is indicated on the label of the pump).

How to install and operate the water pump ▼

I. Dismantle

The repair of the water pump should be done by professional worker. This instruction can help to repair and install the water pump. Dismantle of the pump should follow the instruction supplied by the producer.

1. Demount 6 bolts (5), remove the cover (7) (8) from the pump body (12).
2. Demount the impeller anti-clockwise. Insert the screwdriver into the gap at the axis end of the motor to withstand the motor axis, to remove the impeller.
3. Loosen 4 bolts on the back of the motor to remove the pump body.
4. Demount the airproof groupware (11)
5. Demount the "O" shape ring
6. Push out the fix sealing block from the back of crust (12) and check the centrifugal oil ring (13)

II. Reinstallation

1. Before reinstallation, please check the centrifugal oil ring (13), the impeller (10), the airproof groupware (11), and the cover "O" shape ring (9). Replace them if worn. Clean the surface of the airproof cavity thoroughly.
2. Encase the fix sealing block ---- take a small ball with RTV glued seal to the brass axis cover, push the airproof block into the airproof cavity. It's enough to press by the figure. Clean the RTV on the surface of the seal thoroughly. Put the "O" shape ring to the brass axis cover on the fix sealing block (the "O" shape ring must be stick close to the flange side). Put some rubber lube (e.g. P80) on the "O" shape ring for easy installation (the gasoline type lube is forbidden). Take a plastic lining and firmly put it to the flange bound of the brass sealing block. Push the total seals to the crust's seal cavity of the motor.
3. Clean the hub. use water to clean the circumgyrating sealing block. Evenly push the hub by the finger. The screwdriver and other hard tools are not allowed to be used to prevent the sealing block from being damaged.
4. According to the picture, push the centrifugal oil ring (13) from the axis shoulder to the suitable position.

5. Use 1/16 ball bearing and RTV sealing glue. The sealing glue should be 360 degrees in touch with the axis and the centrifugal oil ring. Keep the sealing glue for 15 minutes.
6. Install the crust (10). Screw down 4 inserting bolts.
7. Screw the impeller down to the axis. The axis cover pushes the centrifugal oil ring, which is sealed to the impeller by the RTV glue.
8. Install "O" shape ring (9) to the cover (7) (8).
9. Put the cover (7) (8) in position. Screw down 6 bolts (5).
10. Let the RTV to be hard set for 1 hour before the motor can be started, otherwise the RTV glue will be thrown away. If the water pump is not used in the CSA bath series, the RTV glue need not to be used.

III. Clue on

We are not responsible for any faults resulted in the using of water pump and motor without following the operation instructions. Please read the statement carefully before starting the pump.

1. Do not use sealing glue with stone base to the cannulation screw thread. Please use the RTV silicone sealant, which is specially used in the plastic fluorine whorl strap. When putting sealant, be careful not to drop into the pump to prevent from wrongly sticking to other parts.
2. When the water level in the pump is lower than the nozzles, it is not allowed to start the pump.
3. Please check if the motor circuit diagram, the power voltage and the power plug are up to the standard.
4. All the metal parts 1.5 m away from the bath should be earthed with the motor. The earth line should be copper wire not thinner than 1.5 square millimeters.
5. The earthing lines inside the room should be copper wire not thinner than 4.0 square millimeters.

★ Notice: All lines must be fixed according to standard by the professional electrician. The motor must be earthed.

Please keep this explanation ▼

The following basic preventive measures should be followed when installing and using the electric product.

1. Read and follow the instruction.
2. Warning --- any children without adult accompanying them can not use this product.
3. All installation of motor power lines should be done by the qualified electrician.
4. The motor that drives the pump can work under high temperature. Don't touch the motor's crust to prevent from scald.
5. Make sure that the water level should be higher than all the nozzles.
6. This product can only connect to the power that protected by GFCI (the Ground Fault Current Interrupter), which should be checked and installed by the qualified electrician, and operated according to the instructions.
7. Do not let anything drop into the gaps between the pump and motor.
8. The water pump can not be refitted, added or deleted.
9. The air switch driver (the push and press style air cell switch) should be installed above the highest position of the bath when the pump is used.
10. One connection bolt inside the connection box should be earthed to the earth end of the power circuit board, using the same line with the power wire, which should not be thinner than 1.5 square millimeters.
11. Warning --- to prevent from getting an electric shock, the earthing type socket protected by the GFCI should be used.
12. Warning --- to prevent from getting an electric shock, the worn out wires should be changed in time.
13. Warning --- to prevent from getting an electric shock, do not use the extension wire to connect the power. The suitable socket position is required.

[Please keep this instruction]