

User's Manual

UniColor Pro™

Color Vision Deficiency Simulation Software

Important

Please read this User's Manual carefully to familiarize yourself with safe and effective usage.

The latest software and User's Manual are available for download from our web site:

<http://www.eizo.com>

Reference Information	2
1. Introduction	3
1-1. Features	3
2. Setting Up	4
2-1. System Requirements	4
2-2. Installing UniColor Pro	5
2-3. Selecting Monitor	7
2-4. Uninstalling UniColor Pro	9
3. Starting and Exiting	10
3-1. Starting UniColor Pro	10
3-2. UniColor Pro Icon in the Notification Area	10
3-3. Displaying the Menu	11
3-4. Displaying the Software Version	11
3-5. Exiting UniColor Pro	12
4. Simulation	13
4-1. Using Floating Window	13
4-2. Using Hotkey	13
5. Screen Capture	14
5-1. Executing Screen Capture	14
6. Changing Settings	15
6-1. Displaying Setting Dialog box	15
6-2. Hotkey Settings	16
6-3. Enabling / Disabling Splash Screen	16
6-4. Enabling / Disabling Floating Window	16



Reference Information

This document describes how to use UniColor Pro, a color vision deficiency simulation software. For information about color vision and Color Universal Design, refer to the "Color Universal Design Handbook".

No part of this manual may be reproduced, stored in a retrieval system, or transmitted, in any form or by any means, electric, mechanical, or otherwise, without the prior written permission of EIZO Corporation. EIZO Corporation is under no obligation to hold any submitted material or information confidential unless prior arrangements are made pursuant to EIZO Corporation's receipt of said information. Although every effort has been made to ensure that this manual provides up-to-date information, please note that this products specifications are subject to change without notice.

Apple, Mac, Macintosh, iMac, eMac, Mac OS, MacBook, PowerBook, ColorSync, QuickTime, and iBook are registered trademarks of Apple Inc.

Pentium is a registered trademark of Intel Corporation in the United States and other countries.

PowerPC is a registered trademark of International Business Machines Corporation.

Windows, Windows Vista, Windows Media, and Xbox 360 are registered trademarks of Microsoft Corporation in the United States and other countries.

ColorNavigator, EIZO EasyPIX, EcoView NET, EIZO ScreenSlicer, i•Sound, Screen Administrator, and UniColor Pro are trademarks of EIZO Corporation.

EIZO, the EIZO Logo, ColorEdge, DuraVision, FlexScan, FORIS, RadiForce, RadiCS, RadiNET, Raptor, and ScreenManager are registered trademarks of EIZO Corporation in Japan and other countries.

All other company and product names are trademarks or registered trademarks of their respective owners.

1. Introduction

UniColor Pro is the software that reproduces the views experienced by people with some sort of color deficiency (strong protanopia, deuteranopia and tritanopia) on your monitor.

1-1. Features

UniColor Pro is built on hardware-based simulations that allow the user to control colors displayed on the monitor using the computer via a USB interface. Therefore, it is different from competitors' products which need to convert images one by one by using software. With our product, the user can convert and view all of the images displayed on the monitor, even movies, in real time. Furthermore, using the Screen Capture function, you can save images displayed on the monitor.

UniColor Pro can be used to simulate protanopia, deuteranopia and tritanopia. For details of each color vision type, refer to the "Color Universal Design Handbook".

If the brightness of your monitor is low, yellow color may look reddish during color vision simulation. However, it has no effect on the performance to check the difficulty of color distinction.

2. Setting Up

2-1. System Requirements

UniColor Pro operates under the system shown below.

Macintosh

- Macintosh: satisfy the OS requirement (except iMac (PowerPC), iBook, iBook G4)
 - RAM (128 MB or more)
 - USB (1.1 or more) port
 - OS: OS X Mavericks (10.9), OS X Mountain Lion (10.8), Mac OS X 10.7, Mac OS X 10.6
 - Color: Thousands or more recommended
- Monitor
 - UniColor Pro-supported FlexScan and ColorEdge series monitors
- EIZO USB cable MD-C93 (accessory)

Windows

- Computer
 - OS:
 - Microsoft Windows 8.1 (32 bit and 64 bit edition)
 - Microsoft Windows 8 (32 bit and 64 bit edition)
 - Microsoft Windows 7 (32 bit and 64 bit edition)
 - Microsoft Windows Vista (32 bit and 64 bit edition)
 - CPU:
 - Pentium-compatible Processor 1 GHz or more (recommended)
 - Physical RAM:
 - Windows 8.1: 1 GB or more (2 GB for 64 bit)
 - Windows 8: 1 GB or more (2 GB for 64 bit)
 - Windows 7: 1 GB or more (2 GB for 64 bit)
 - Windows Vista Series: 1 GB or more
 - USB (1.1 or more) port
 - Color: 16 bit or more recommended
- Monitor
 - UniColor Pro-supported FlexScan and ColorEdge series monitors
- EIZO USB cable MD-C93 (accessory)

2-2. Installing UniColor Pro

Macintosh

Note

- The user account to be used for installing UniColor Pro must have the "Administrators" privilege.
 - For user account privilege settings, contact your system administrator.
-

1 Connect the computer and the monitor with the EIZO USB cable

Tips

- Refer to the setup manual or user's manual of the monitor for USB cable connection.
-

2 Double Click the downloaded file.

The "UniColor Pro for Mac OS X" icon appears on the desktop. Double click the icon to open the window.

3 Double click the "UniColor Pro.pkg".

The UniColor Pro installer starts up.

4 Install the software

Follow the instruction of the menu to install the software.

Note

- If your OS does not meet the system requirements, the installation will not be executed.
-

When the installation is completed, the UniColor Pro icon appears in the Dock.



Windows

Note

- The user account to be used for installing UniColor Pro must have the "Administrators" privilege.
 - For user account privilege settings, contact your system administrator.
-

1 Connect the computer and the monitor with the EIZO USB cable

Tips

- Refer to the setup manual or user's manual of the monitor for USB cable connection.
-

2 After unzip the downloaded file, click "setup.exe"

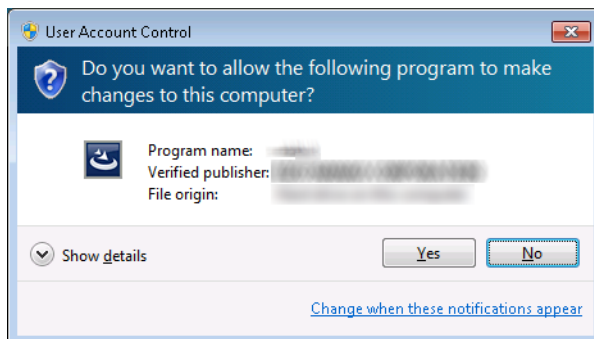
The UniColor Pro installer starts up.

3 Install the software

Click "Install UniColor Pro" then the setup wizard starts. Follow the instruction of the menu to install the software.

Tips

- The "User Account Control" dialog box may appear.*1
Click [Yes](Windows 8.1 / Windows 8 / Windows 7) / [Continue](Windows Vista) to open the menu.



*1: The "User Account Control" dialog box does not appear depending on the setting.

When the installation is completed, the UniColor Pro icon appears in the notification area.



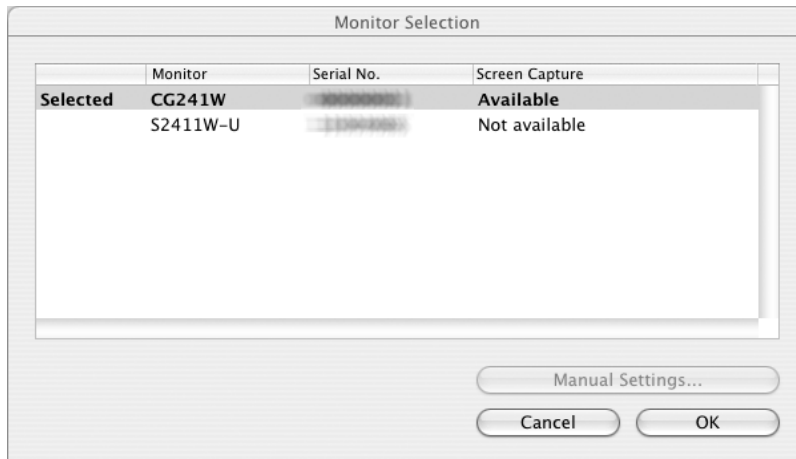
2-3. Selecting Monitor

When install is completed, "Monitor Selection" window appears. Set the monitor to be simulated according to the following procedure.

Tips

- This setting can be changed later. "Monitor Selection" window can be displayed in the following way.

1. Display the menu. (Refer to "3-3. Displaying the Menu".)
2. Click [Select Monitor...].



1 Click the line of the monitor to be simulated

The color of the clicked line will be reversed.

When using the screen capture function → [Go to Step 2](#)

When not using the screen capture function → [Go to Step 5](#)

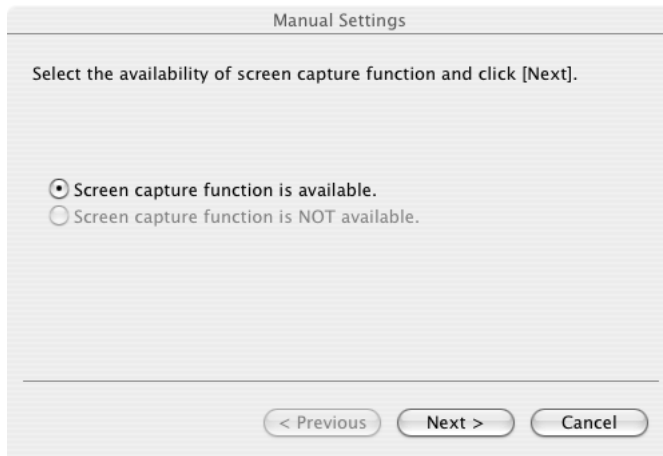
2 Conform that "Available" is displayed in "Screen Capture" column of the reversed line

When "Available" is displayed → [Go to Step 5](#)

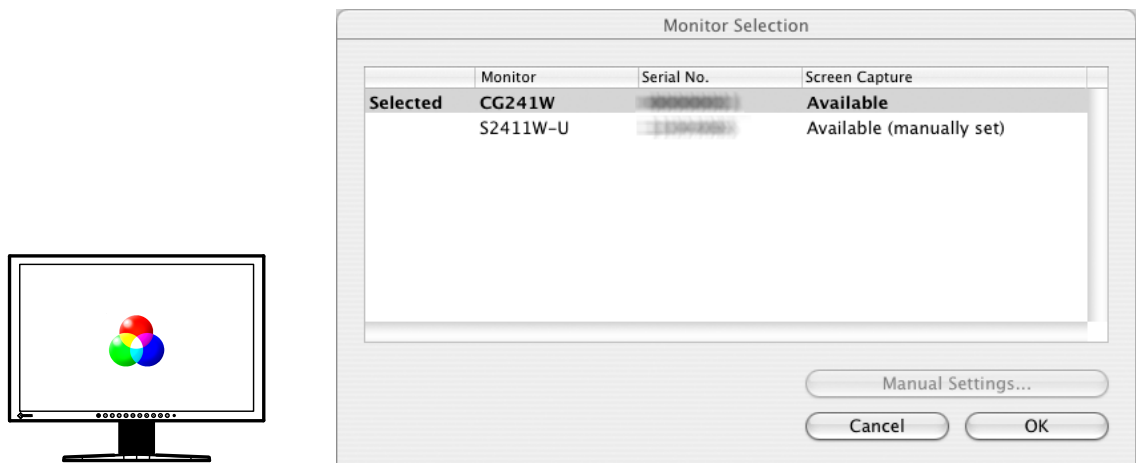
When "Not available" is displayed → [Go to Step 3](#)

3 Click "Manual Settings" to start the manual setting wizard

4 Select "Screen capture function is available.", and then follow the instruction of the window

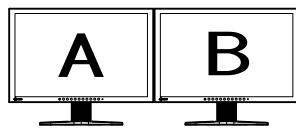


A mark which indicates that the function is available will appear on the center of the screen and "Available (manually set)" be displayed in "Screen Capture" column of "Monitor Selection" window.

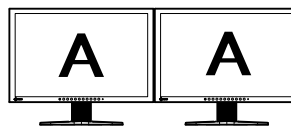


Note

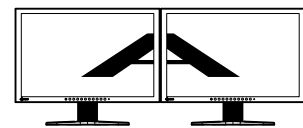
- The screen capture function may not be available depending on the types or settings of graphics board. When connected to multiple monitors that are compatible with UniColor Pro, we recommend each monitor displays independent screen. Displaying the same screen on each monitor or over the multiple monitors may cause the failure of the screen capture function.



Independent screen on each monitor (recommended)



Same screen on each monitor



A screen over the multiple monitors

5 Click "OK" in "Monitor Selection" window to close the window

2-4. Uninstalling UniColor Pro

Macintosh

- 1** Drag the UniColor Pro folder from the applications folder to trash

Windows


- 1** Select [Control Panel] - [Uninstall a Program]
- 2** Select "UniColor Pro" from the list and click [Uninstall]

3. Starting and Exiting

3-1. Starting UniColor Pro

UniColor Pro starts automatically when you log on the PC. When it has started up, the UniColor Pro icon is displayed on the Dock (Macintosh) / notification area (Windows) to indicate that the program is resident.

Tips

- Once UniColor Pro has been exited, it can be restarted by the following.
 - Macintosh: Double-click the [UniColor icon] in the [Application] - [UniColor Pro] folder.
 - Windows 8.1 : Click  on the [Start] screen and then click [UniColor Pro] on the [Apps] screen.
 - Windows 8 : Click the tile displayed as "UniColor Pro" in the Start Screen.
 - Windows 7 / Windows Vista: Click [Start] – [All Programs] – [EIZO] – [UniColor Pro] – [UniColor Pro].



If any of the following messages appear at startup, check the corresponding item.

Message	Check item
This application has failed to start because your OS is not supported.	Check if your OS meets the system requirements described in " 2. Setting Up ".
One or more hotkeys are already used by other applications. The hotkey setting will be lost when the startup process is continued. Do you continue?	Selecting [YES] will start up the program but the hotkey settings registered in UniColor Pro will be lost. Set these hotkeys if necessary. Selecting [NO] will not start up the program. For information about default hotkeys and how to change their settings, refer to " 6. Changing Settings ".

Note

- If the user account of the PC is switched while UniColor Pro is still running, the new user account after the switch over cannot be used to operate UniColor Pro.

3-2. UniColor Pro Icon in the Notification Area

UniColor Pro Icon	Explanation
Color 	If the icon is in color, UniColor Pro is active.
Monochrome 	If the icon is in monochrome, UniColor Pro is not active. Confirm the following points: <ul style="list-style-type: none"> • ColorNavigator is not active. (If ColorNavigator is active, UniColor Pro can not be used.) • USB cable is correctly connected. • Your monitor meets the system requirements described in "2-1. System Requirements".

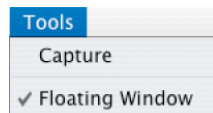
3-3. Displaying the Menu

Macintosh

Press the UniColor Pro icon in the Dock to open the menu.



Or click the UniColor Pro icon in the Dock to open the menu in the menu bar.



Windows

Right-click the UniColor Pro icon on the notification area to open the menu.



3-4. Displaying the Software Version

- 1** Open the menu
- 2** Click [About UniColor Pro](Macintosh) / [About...](Windows)

3-5. Exiting UniColor Pro

- 1** Open the menu
- 2** Click [Quit](Macintosh) / [Exit](Windows)

4. Simulation

UniColor Pro performs simulations using the following three modes.

Mode name	Description
Protanope mode	Simulates protanope vision.
Deuteranope mode	Simulates deuteranope vision.
Tritanope mode	Simulates tritanope vision.
Original mode	Displays original images.

Note

- UniColor Pro is designed for simulation on a single monitor. When connected to multiple monitors, you can specify the monitor to be simulated in the "Monitor Selection" window. For the details, refer to "[2-3. Selecting Monitor](#)".

Tips

- For details of protanopia, deuteranopia and tritanopia, refer to the "Color Universal Design Handbook".

4-1. Using Floating Window

To execute a simulation, click one of the modes shown on the floating window.



Tips

- If the floating window does not appear, take the following steps.
 - 1 Open the menu.
 - 2 Click [Floating window].

4-2. Using Hotkey

A simulation can also be executed by pressing the hotkey assigned to each mode. For information about hotkey settings, refer to "[6-2. Hotkey Settings](#)".

5. Screen Capture

5-1. Executing Screen Capture

Executing the screen capture function allows you to save images displayed on the monitor in the following format.

- Macintosh: TIFF file format
- Windows: BMP file format

Note

- To capture, the color of the screen must be set to the followings:
 - Macintosh: Thousands or more
 - Windows: 16 bit or more
 - When [Capture] can not be clicked (the button is displayed in gray), the screen capture function should be set to be available in "Manual Settings" of the "Monitor Selection" window. For the details, refer to "[2-3. Selecting Monitor](#)".
-

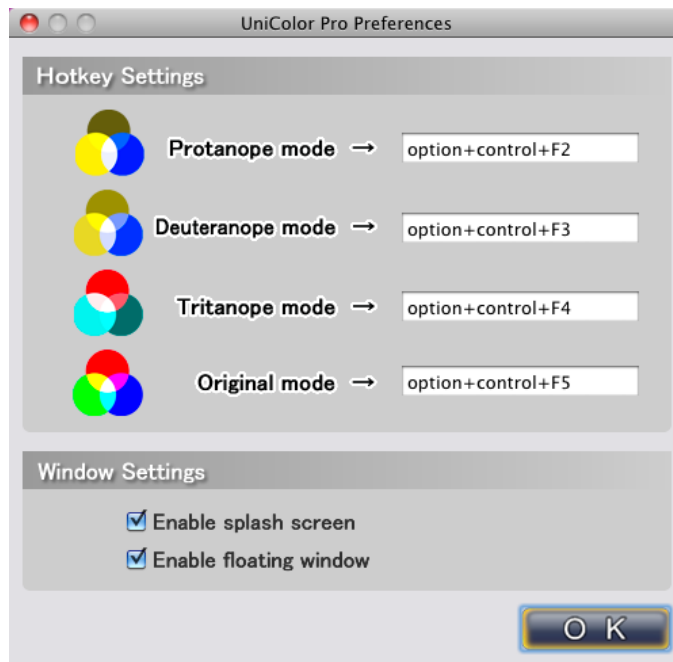
- 1** Open the menu
- 2** Click [Capture]
The [Save as] dialog box will appear.
- 3** Select [Save in] and then enter a [File name]
- 4** Press [Save]

6. Changing Settings

6-1. Displaying Setting Dialog box

To change settings, take the following steps to open the setting dialog box.

- 1** Open the menu
- 2** Click [Preferences...](Macintosh) / [Settings...](Windows)



Setting Dialog box (Default)

Tips

- The setting can also be opened by the following.
 - Macintosh: Hold [Command] key and press [,] key.
 - Windows: Double-click the UniColor Pro icon on the notification area.

6-2. Hotkey Settings

To change hotkeys assigned to each mode, move the box to change item, then press any key.

Press either [BackSpace] key (Windows only), [Delete] or [Space] key to cancel the setting.

Tips

- Multiple keys can be set in combination. For example, when press three keys ([Ctrl], [Shift] and [F2]) at the same time, "Ctrl + Shift +F2" is displayed.
 - The OS assigned keys cannot be set as hotkeys.
 - Macintosh:** [Command] key, [Delete], [Space], [alphanumeric], [home], [page up], [page down], [end] key, etc.
 - Windows:** [Windows logo] key, [Delete], [BackSpace], [Tab], [Enter] key, etc.
 - The set keys cannot be used for other software as long as UniColor Pro is running.
-

6-3. Enabling / Disabling Splash Screen

To hide the splash screen at startup, uncheck the box next to [Enable splash screen].

6-4. Enabling / Disabling Floating Window

To hide the floating window while the program is resident, uncheck the box next to [Enable floating window].

Tips

- The floating window can also be enabled or disabled by the following method.
 - 1 Open the menu.
 - 2 Click [Floating window].
-



EIZO Corporation

<http://www.eizo.com>

Copyright © 2006-2014 EIZO Corporation All rights reserved.

11th Edition-April, 2014

03V22114L1
(U.M-UCPRO)