

*Thank you for purchasing this Esco Biological Safety Cabinet. Please read this manual thoroughly to familiarize yourself with the many unique features and exciting innovations we have built into your new equipment. Esco provides many other resources at our website, [www.escoglobal.com](http://www.escoglobal.com), to complement this manual and help you enjoy many years of productive and safe use of your Esco products.*



# User Manual

---

**For Technical Service, contact  
North America**

*Esco Technologies, Inc.  
2940 Turnpike Drive, Units 15-16 • Hatboro, PA 19040, USA  
Toll-Free USA and Canada 1-877-479-3726  
Tel 215-441-9661 • Fax 215-441-9660  
[us.escoglobal.com](mailto:us.escoglobal.com) • [usa@escoglobal.com](mailto:usa@escoglobal.com)*

**Rest of World**

*Esco Micro Pte. Ltd.  
21 Changi South Street 1 • Singapore 486 777  
Tel +65 6542 0833 • Fax +65 6542 6920  
[www.escoglobal.com](http://www.escoglobal.com) • [mail@escoglobal.com](mailto:mail@escoglobal.com)*

Ascent **OPTI**  
Ductless Fume Hood

## Copyright Information

© Copyright 2011 Esco Micro Pte Ltd. All rights reserved.

The information contained in this manual and the accompanying product is copyrighted and all rights are reserved by Esco.

Esco reserves the right to make periodic minor design changes without obligation to notify any person or entity of such change.

Sentinel® and AscentOpti® are registered trademarks of Esco.

*“Material in this manual is provided for informational purposes only. The contents and the product described in this manual (including any appendix, addendum, attachment or inclusion), are subject to change without notice. Esco makes no representations or warranties as to the accuracy of the information contained in this manual. In no event shall Esco be held liable for any damages, direct or consequential, arising out of or related to the use of this manual.”*

# Table of Contents

- i Table of Contents
- iii Warranty Terms and Conditions
- v Introduction
  - v 1. Products Covered
  - v 2. Safety Warning
  - v 3. Limitation of Liability
  - vi 4. European Union Directives on WEEE and RoHS
- vii Declaration of Conformity

- 1 Chapter 1 – Product Information**
  - 1 1.1 Quick View
  - 2 1.2 Filtracheck

- 3 Chapter 2 – SPD Control System**
  - 3 2.1 Sentinel Control System
  - 4 2.2 Menu Options
    - 4 2.2.1 Settings
    - 5 2.2.2 Calibration
    - 5 2.2.3 Admin
    - 7 2.2.4 Setting Mode
  - 7 2.3 Alarm and Warnings

- 9 Chapter 3– SPB Control System**

- 11 Chapter 4 - Basic Hood Operation**
  - 11 4.1 Using Front Cover
  - 11 4.2 Starting and Shutting Down the Ductless Fume Hood
    - 11 4.2.1 Turning on the Hood
    - 11 4.2.2 Turning off the Hood
  - 11 4.3 Operating the Ductless Fume Hood
    - 11 3.3.1 Working in the Hood
    - 12 3.3.2 Working Ergonomics

- 13 Chapter 5 – Service and Maintenance**
  - 13 5.1 Scheduled Maintenance
  - 14 5.2 Maintenance/Service Log

**Appendix**



## Warranty Terms and Conditions

---

Esco products come with either a 1, 2 or 3 year limited warranty, depending on the product purchased, beginning on the date of shipment from any Esco international warehousing location. To determine which warranty applies to your product, refer to the appendix below.

Esco's limited warranty covers defects in materials and workmanship. Esco's liability under this limited warranty shall be, at our option, to repair or replace any defective parts of the equipment, provided if proven to the satisfaction of Esco that these parts were defective at the time of being sold, and that all defective parts shall be returned, properly identified with a Return Authorization.

This limited warranty covers parts only, and not transportation/insurance charges.

This limited warranty does not cover:

- Freight or installation (inside delivery handling) damage. If your product was damaged in transit, you must file a claim directly with the freight carrier.
- Products with missing or defaced serial numbers.
- Products for which Esco has not received payment.
- Problems that result from:
  - External causes such as accident, abuse, misuse, problems with electrical power, improper operating environmental conditions.
  - Servicing not authorized by Esco.
  - Usage that is not in accordance with product instructions.
  - Failure to follow the product instructions.
  - Failure to perform preventive maintenance.
  - Problems caused by using accessories, parts, or components not supplied by Esco.
  - Damage by fire, floods, or acts of God.
  - Customer modifications to the product
- Consumables such as filters (HEPA, ULPA, carbon, pre-filters) and fluorescent / UV bulbs.
- Esco is not liable for any damage incurred on the objects used on or stored in Esco equipment. If the objects are highly valuable, user is advised to have in place independent external preventive measures such as connection to a centralized alarm system.

Factory installed, customer specified equipment or accessories are warranted only to the extent guaranteed by the original manufacturer. The customer agrees that in relation to these products purchased through Esco, our limited warranty shall not apply and the original manufacturer's warranty shall be the sole warranty in respect of these products. The customer shall utilize that warranty for the support of such products and in any event not look to Esco for such warranty support.

Esco encourages all users to register their equipment online at [www.escoglobal.com/warranty](http://www.escoglobal.com/warranty) or complete the warranty registration form included with each product.

ALL EXPRESS AND IMPLIED WARRANTIES FOR THE PRODUCT, INCLUDING BUT NOT LIMITED TO ANY IMPLIED WARRANTIES AND CONDITIONS OF MERCHANTABILITY AND FITNESS FOR A PARTICULAR PURPOSE ARE LIMITED IN TIME TO THE TERM OF THIS LIMITED WARRANTY. NO WARRANTIES, WHETHER EXPRESS OR IMPLIED, WILL APPLY AFTER THE LIMITED WARRANTY PERIOD HAS EXPIRED. ESCO DOES NOT ACCEPT LIABILITY BEYOND THE REMEDIES PROVIDED FOR IN THIS LIMITED WARRANTY OR FOR SPECIAL, INDIRECT, CONSEQUENTIAL OR INCIDENTAL DAMAGES, INCLUDING, WITHOUT LIMITATION, ANY LIABILITY FOR THIRD-PARTY CLAIMS AGAINST YOU FOR DAMAGES, FOR PRODUCTS NOT BEING AVAILABLE FOR USE, OR FOR LOST WORK. ESCO'S LIABILITY WILL BE NO MORE THAN THE AMOUNT YOU PAID FOR THE PRODUCT THAT IS THE SUBJECT OF A CLAIM. THIS IS THE MAXIMUM AMOUNT FOR WHICH ESCO IS RESPONSIBLE.

These Terms and Conditions shall be governed by and construed in accordance with the laws of Singapore and shall be subject to the exclusive jurisdiction of the courts of Singapore.

**Technical Support, Warranty Service Contacts**

USA: 1-877-479-3726

Singapore: +65 65420833

Global Email Helpdesk: support@escoglobal.com

Visit <http://www.escoglobal.com/> to talk to a Live Support Representative

Distributors are encouraged to visit the Distributor Intranet for self-help materials.

**Product Appendix, Warranty Listings**

Biological Safety Cabinets, Laminar Flow Cabinets, HEPA-Filtered Cabinets (except Streamline brand)	The warranty periods for BSC may vary by country. Contact your local distributor for specific warranty details.
Laboratory Fume Hoods	2 years limited.
Ductless Fume Hoods	4 years limited for Ascent Opti, 6 years for Ascent Max.
Cleanroom Equipment	1 year limited.
Laboratory Ovens and Incubators	1 year limited.
CO <sub>2</sub> Incubators	2 years limited.
Containment/Pharma Products	2 years limited.
Ultralow Temperature Freezer	3 years limited. 60 months on Compressor.

The warranty period starts two months from the date your equipment is shipped from Esco facility for international distributors. This allows shipping time so the warranty will go into effect at approximately the same time the equipment is delivered to the user. The warranty protection extends to any subsequent owner during the warranty period. Distributors who stock Esco equipment are allowed an additional four months for delivery and installation, providing the product is registered with Esco. User can register product online at [www.escoglobal.com/warranty](http://www.escoglobal.com/warranty) or complete the warranty registration form included with each product.


Policy updated on 1<sup>st</sup> December 2011 (This limited warranty policy applies to products purchased on or after 1<sup>st</sup> January 2012)

# Introduction

## 1. Products Covered

Esco Ductless Fume Hood – Ascent Opti			
Electrical Rating	0.6 meters (2 feet)	0.9 meters (3 feet)	1.2 meters (4 feet)
220-240 V AC, 50Hz, 1Φ	SPB-2A1	SPD-3A1 SPD-3B1	SPD-4A1 SPD-4B1
220-240 V AC, 60Hz, 1Φ	SPB-2A3	SPD-3A3 SPD-3B3	SPD-4A3 SPD-4B3

## 2. Safety Warning

- Anyone working with, on or around this equipment should read this manual. Failure to read, understand and follow the instructions given in this documentation may result in damage to the unit, injury to operating personnel, and / or poor equipment performance.
- Any internal adjustment, modification or maintenance to this equipment must be undertaken by qualified service personnel.
- The use of any hazardous materials in this equipment must be monitored by an industrial hygienist, safety officer or some other suitably qualified individual.
- Before you process, you should thoroughly understand the installation procedures and take note of the environmental / electrical requirements.
- In this manual, important safety related points will be marked with the symbol. 
- If the equipment is used in a manner not specified by this manual, the protection provided by this equipment may be impaired.

## 3. Limitation of Liability

The disposal and / or emission of substances used in connection with this equipment may be governed by various local regulations. Familiarization and compliance with any such regulations are the sole responsibility of the users. Esco's liability is limited with respect to user compliance with such regulations.

## 4. European Union Directive on WEEE and RoHS

The European Union has issued two directives:

- **Directive 2002/96/EC on Waste Electrical and Electronic Equipment (WEEE)**

This product is required to comply with the European Union's Waste Electrical & Electronic Equipment (WEEE) Directive 2002/96/EC. It is marked with the following symbol:

Esco sells products through distributors throughout Europe. Contact your local Esco distributor for recycling/disposal.

- **Directive 2002/95/EC on Restriction on the use of Hazardous Substances (RoHS)**

With respect to the directive on RoHS, please note that this hood falls under category 8 (medical devices) and category 9 (monitoring and control instruments) and is therefore exempted from requirement to comply with the provisions of this directive.



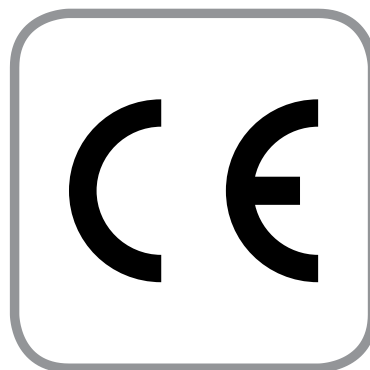




## Declaration of Conformation

In accordance to EN ISO/IEC 17050-1:2010

We, Esco Micro Pte. Ltd.  
of 21 Changi South Street 1  
Singapore, 486777  
Tel: +65 6542 0833  
Fax: +65 6542 6920



declare on our sole responsibility that the product:

**Category** : Ductless Fume Hoods  
**Brand** : Ascent Opti  
**Model** : SPB-2A1, SPD-3A1, SPD-3B1, SPD-4A1, SPD-4B1

in accordance with the following directives:

**2006/95/EEC** : The Low Voltage Directive and its amending directives  
**92/31/EEC** : The Electromagnetic Compatibility Directive and its amending directives

has been designed to comply with the requirement of the following Harmonized Standard:

**Low Voltage** : EN 61010-1:2010  
**EMC** : EN 61326-1:2006 Class B

More information may be obtained from Esco's authorized distributors located within the European Union. A list of these parties and their contact information is available on request from Esco.

A handwritten signature in black ink, appearing to read 'XQ Lin', is positioned above a horizontal line.

**XQ Lin**  
Group CEO, Esco

This Declaration of Conformity is only applicable for 230V AC 50Hz units



## Chapter 1 - Product Information

### 1.1 Quick View



1. Front cover
2. Front cover opening
3. Worktray
4. Mobile base cabinet
5. Blower
6. Electrical panel
7. Carbon filter
8. Sentinel Control System
9. Electrical cable opening

## 1.2 Filtracheck

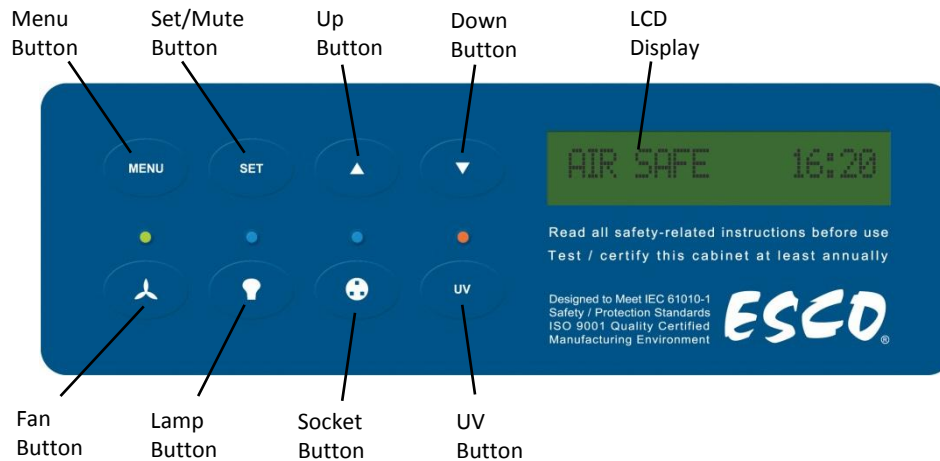
FiltraCheck is a trademark service provided by Esco's fume filtration division. Customers who intend to purchase a ductless fume hood but are unsure whether the cabinet is suitable for their application, can forward a list of chemicals that they will be handling and their pattern of usage to Esco's FiltraCheck service team.

A PDF Questionnaire form is available at <http://ductless.escoglobal.com/>. This questionnaire can be downloaded and either forwarded by email or by fax to Esco. After careful analysis of the provided chemicals list and pattern of usage, a proper advice document will be generated and provided to the customer in 3 days period.

This document will recommend the appropriate laboratory equipment; ducted fume hood or ductless fume hood or neither based on the investigation done by the FiltraCheck team. Depending on the type of chemicals used, the document may also contain a list of procedures, warnings, etc. that will help in ensuring a safer laboratory working environment. In the case of a recommendation of a ductless cabinet, appropriate grade and type of activated carbon also becomes a factor that has to be taken into consideration.

## Chapter 2 – SPD Control System

### 2.1 Sentinel Control System



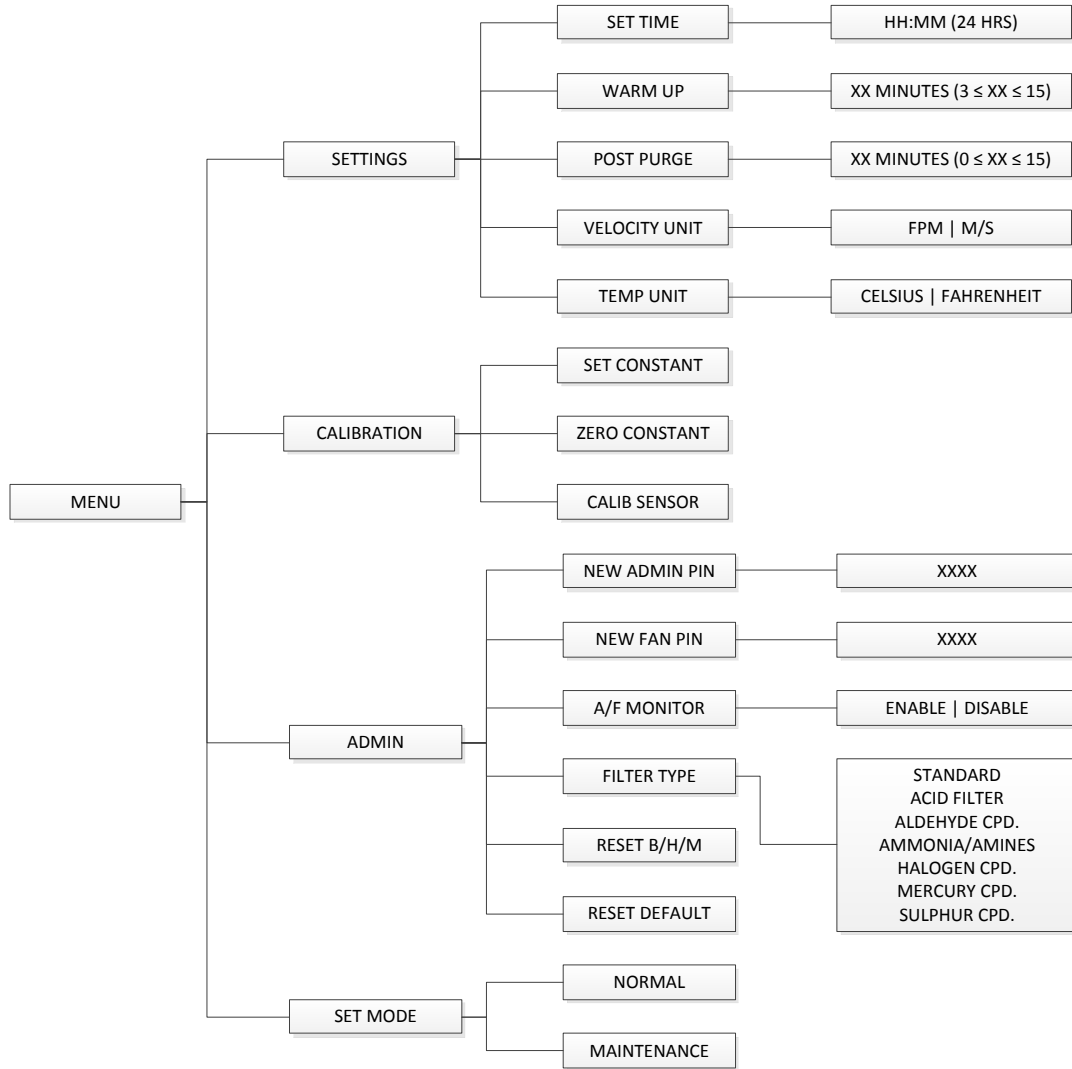
- Fan Button
  - Turns on and turn off the fan.
- Lamp Button
  - Turns on and turn off the lamp.
- Socket Button
  - Although present, this feature is not applicable.
- UV Button
  - Although present, this feature is not applicable.
- Up (▲) and Down (▼) Arrow Button
  - Move upwards and downwards the menu options.
  - Increase and decrease corresponding value inside one of the menu options.
- Set or Mute Button
  - Choose the menu or sub-menu currently displayed on the LCD screen.
  - Proceed to the next step or sequence inside one of the menu options.
- Menu Button

*Alarm is disabled when you enter menu options*

- To enter and exit from the menu options.
- To go back to the previous level of the menu options.

## 2.2 Menu Options

Please refer to the following diagram for complete reference to all menu options available.



### 2.2.1 Settings

The user may use the settings menu function to customize the operation of the BSC to meet specific application requirements.

#### 2.2.1.1 Set Time

Users can set the time by increasing/decreasing the hour and minute values. The correct time will be maintained even after the unit is turned off.



#### 2.2.1.2 Warm Up

There will be a period of warm-up, before the fan is fully functioning. This is to ensure that the sensors, the blower, and the control system are stabilized, as well as purging the work zone of contaminants. The default setting is 3 minutes and the user can set it between 3 to 15 minutes.



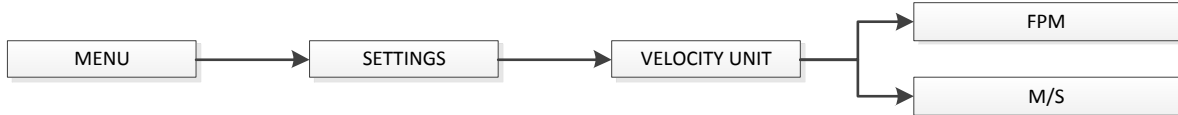
### 2.2.1.3 Post Purge

After the user switches off the hood's fan, there will be a post-purge period. This feature is to ensure that all residual contaminants are purged from the work zone. The default setting is 0 minute and user can set it between 0 to 15 minutes. Setting it to 0 minute will disable this feature. However, it is recommended to purge the fume hood by leaving the fan on for around 3 minutes after the work is complete.



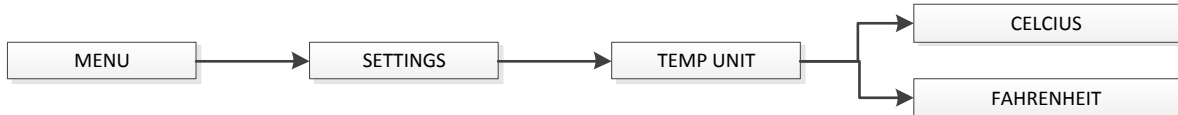
### 2.2.1.4 Velocity Unit

Using this option, the user can select the unit in which air velocity is measured and displayed.



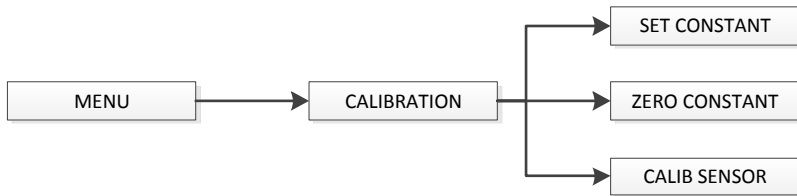
### 2.2.1.5 Temperature Unit

Using this option, the user can select the unit in which air velocity is measured and displayed.



## 2.2.2 Calibration

The purpose of calibration is to ensure the accuracy of the airflow display and alarm (if present). This involves measuring airflow with reference instrumentation and establishing reference between airflow sensor(s) on the hood to the standard reference. Calibration should only be carried out by trained personnel. This section presents a brief overview of the calibration menu function. For more information, refer to test report.



### 2.2.2.1 Set Constant

Every sensor manufactured by Esco has a specific Sensor Constant which is used for temperature compensation performed by the temperature sensor.

### 2.2.2.2 Zero Sensor

This option let the controller record the specific sensor output voltage and correspond it to 0 m/s or 0 fpm.

### 2.2.2.3 Calib Sensor

This option allows proper calibration and operation of the airflow sensor alarm. There will be three points to be calibrated, namely inflow fail point, inflow nominal point, and downflow nominal point.

## 2.2.3 Admin

The admin menu allows you to change both fan and Admin. PIN, also to disable it (not recommended). The reset blower hour meter is usually used after you change the blower (or filter) and it can easily give you the indication on when to do maintenance. While the reset default function will return the options in the settings menu to their factory settings.

### 2.2.3.1 New Admin. PIN

ADMIN PIN restricts access to MENU functions, including service functions, like calibration. User must enter four digits PIN before accessing MENU. ADMIN PIN has higher priority and can be used to control the fan (override Fan PIN).

ADMIN PIN can also be used to switch to maintenance mode from ERR.MSWITCH and AIR FAIL! errors condition.

The default PIN is 0009. Setting PIN to 0000 will disable this feature.



### 2.2.3.2 New Fan PIN

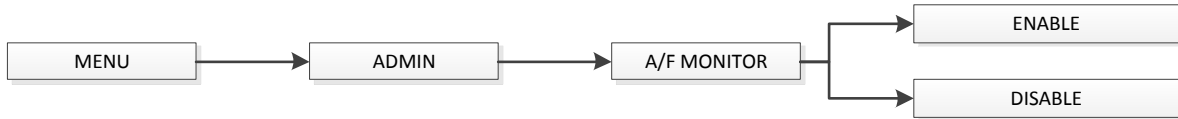
Fan PIN restricts access to fan control. User must enter four-digit PIN before switching fan on or off. As such, it can restrict access to operating the hood by unauthorized personnel. Fan PIN is also needed to disable the alarm when the sash is fully raised and cleaning needs to be performed. It is recommended that the Fan PIN be issued only to personnel authorized to use the hood.

The default PIN is 0001. Setting the PIN to 0000 will disable this feature.



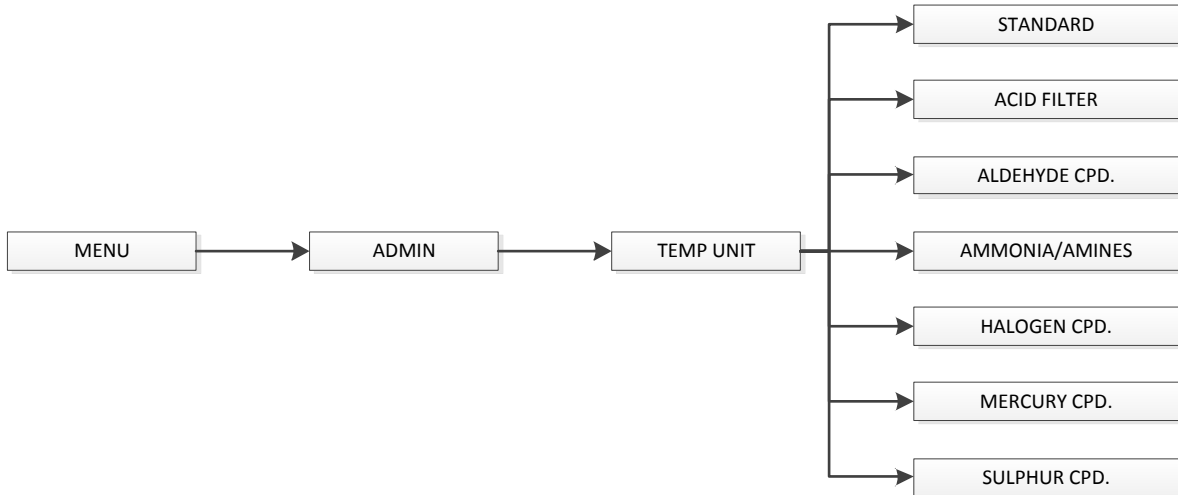
### 2.2.3.3 A/F Monitor

Whenever the air velocity falls below the fail point, the air fail alarm will be triggered. This option is used to enable/disable alarm.



### 2.2.3.4 Filter Type

To set the type of main carbon filter(s) used in the hood. The options include standard, acid filter, aldehyde compound, ammonia/amines, halogen compound, mercury compound and sulphur compound.



### 2.2.3.5 Reset Blower Hour Meter

This option is used to reset the blower hour meter. The blower hour meter indicates how long the blower has been in operation. Maximum counter is set at 9999 hours. The counter value can be checked while in maintenance mode.





### 2.2.3.6 Reset Default

User can reset the default setting by choosing this option. The features being reset are warm-up period (3 minutes), post-purge period (0 minute), velocity unit (Metric), temperature unit (Celsius), Admin. PIN (0009), and Fan PIN (0001).

Note that the calibration settings cannot be reset as it may cause the BSC to operate in an unsafe manner. The hour meters cannot be reset either.



### 2.2.4 Set Mode

Ductless fume hood has two working mode, the default normal mode which is used in a day to day activity, and maintenance mode.



#### 2.2.4.1 Normal Mode

Every time the hood is restarted, this mode will be activated by default. In this mode, all alarms and interlocks are enabled.

#### 2.2.4.2 Maintenance Mode

Maintenance mode should only be accessed by qualified personnel during maintenance. In this mode, all alarms are disabled and all interlocks are defeated.

## 2.3 Alarm and Warnings

The warning AIR FAIL! indicates that there is airflow failure. The operator should check if there is any obstruction to the airflow, and correct it if possible. However, if the problem continues, the operator should stop working as the hood’s protection may have been compromised. Call service or Esco’s local distributor.

Other alarms that indicate a failure or an error in the BSC system:

- ERR.AIRFAIL will be displayed if the blower is turned off while there is an airflow failure.
- ERR.CALIB will be displayed if the airflow velocity sensor is not yet calibrated.



## Chapter 3 – SPB Control System

---

SPB only uses one ON/OFF switch to control the fan.





## Chapter 4 – Basic Hood Operation

---

### 4.1 Using Front Cover

- The front cover should be fully closed when the hood is not in use. This helps keep the work zone interior clean.
- The front cover should always be in the operating height at all times when the hood is in use. Even if the hood is left unattended, but the blower is on, the cover should never be moved from the normal operating height, unless during loading or unloading of materials/apparatus into the hood.
- The cover may be opened to its maximum position for the purpose of loading/unloading of materials/apparatus into the hood.

### 4.2 Starting and Shutting Down the Ductless Fume Hood

#### 4.2.1 Turning on the Hood

1. Turn on the fan by pressing the FAN button. Input the Fan PIN if asked (default: 0001). This will start the warm up procedure (default: 3 minutes). All buttons are disabled during warm up period.  
**Note:** *SPB doesn't have warm up period, but it is recommended to allow 3 minute warm up before using the hood*
2. The hood is ready for work.

#### 4.2.2 Turning off the Hood

1. Turn off the fan by pressing the FAN button. Input the Fan PIN if asked (default: 0001). This will start the post purge procedure (default: 0 minute). All buttons are disabled during post purge period.

### 4.3 Operating the Ductless Fume Hood

#### 4.3.1 Working in the Hood

- Check the label on the ductless fume hood to see what chemicals the hood is intended for – and only use the hood for any procedure involving such chemicals.
- Ensure the exhaust is operating before commencing work.
- After all the apparatuses/items have been arranged, allow the blower to run for another 3 minutes in order to purge work zone of contaminants.
- Minimize room activity since these external airflow disturbances may adversely affect the hood's internal airflow, impairing the containment capabilities of the fume hood.
- Keep your head outside of the hood.
- Work as far into the hood as possible and with slow, deliberate movements, to minimize airflow disturbances.
- Work with the sash as fully lowered as possible, utilizing the sash as a natural barrier.
- Do not use this hood as a storage area. Items can block airflow and interfere with containment.
- If performance is suspected, or an airflow alarm is triggered (*if installed*), terminate usage, close the sash completely, and cease work.
- Do not let organic chemicals evaporate in the hood – use a proper waste bottle. Do not leave uncapped bottles of chemicals or waste in a hood.
- Certify this hood annually to verify airflow velocity, smoke patterns and containment.
- Perform routine maintenance in accordance with the manufacturer's instructions.

### 4.3.2 Working Ergonomics

On most occasions, you would most likely be operating the fume hood in sitting rather than standing posture. There are some obvious advantages of the sitting posture:

- The physiological energy cost and fatigue involved in sitting are relatively less
- Sitting posture provides the body with a stable support

However, sitting position has some drawbacks too:

- The working area available is fairly limited
- There is a potential risk of being constrained in the same posture for a long time
- Sitting posture is one of the most stressful postures for one's back

Therefore you should pay careful attention to the following guidelines in order to achieve comfortable and healthy working conditions:

1. Always ensure that your legs have enough legroom.
2. Keep your lower back comfortably supported by your chair. Adjust the chair or use a pillow behind your back whenever necessary.
3. You should place your feet flat on the floor or on a footrest. Don't dangle your feet and compress your thighs.
4. You should keep varying your sitting position throughout the day at regular intervals so that you are never in the same posture for too long.
5. Observe the following precautions with respect to your eyes:
  - Give your eyes frequent breaks. Periodically look away from the work area and focus at a distant point.
  - Keep your glasses clean.
6. Arrange the items/apparatus frequently used in your work in such a way that you can minimize the physical strain involved in handling them.
7. Exercise regularly

Ergonomics accessories available with Esco include:

- a. Armrest padding
- b. Lab chair
- c. Footrest

Please contact your local distributor or Esco for more information.

## Chapter 5 – Maintenance

### 5.1 Scheduled Maintenance

Proper and timely maintenance is crucial for trouble free functioning of any device and your Esco ductless fume hood is no exception to this rule. We strongly recommend that you follow the maintenance schedule suggested hereunder in order to obtain optimal performance from your Esco ductless fume hood.

No.	Description of Task to Perform	Maintenance to be carried out every				
		Week	Month	Quarter	1 Year	2 Years
1	Check the alarm and measure the basic airflow	√				
2	Clean the interior work surface and walls with soap water	√				
3	Wipe down cover with appropriate cleaner	√				
4	Clean the exterior surfaces of the ductless fume hood		√			
5	Measure the ductless fume hood face velocity		√			
6	Check fans, motors, drives and bearings for proper operation			√		
7	Check fluorescent tubes for proper operation			√		
8	Test the operation of airflow alarm			√		
9	Repair defect and lubricate as necessary			√		
10	Clean the stainless steel surface using MEK			√		
11	Re-certification				√	
12	Change the fluorescent lamps					√
13	Check filter saturation	(check according to Filtrachek recommendation)				

#### Cleaning the Hood

- Clean the work surface and walls with soap water
- Clean the cover using an appropriate cleaner
- Use a damp cloth to clean the exterior surface of the fume hood, particularly on the front and top in order to remove dust that accumulated there
- Use clean water to finish the cleaning and wash away any residue from the soap water and glass cleaner
- For removing stubborn stains or spots on the stainless steel surface, make use of MEK (Methyl-Ethyl-Ketone). In such cases, make sure that you wash the steel surface immediately afterwards with clean water and some liquid detergent. Use a polyurethane cloth or sponge for washing. Regularly cleaning the stainless steel surface can help you retain the attractive factory finish.

#### Test the audible and visual alarm (only for SPD)

If possible, cover the airflow sensor; otherwise cover the perforations on the back wall – this should disrupt the airflow of the hood enough to activate the alarm

#### Check the hoods functionality

- Check the hood's mechanical functionality
- Check the hood's electrical functionality
- Check the hood for any defect, repair immediately

#### Check filter saturation

Check for filter saturation often. The saturation level of a filter is directly affected by the amount of chemical fume generated by the experiment conducted inside the fume hood. Use particle counter below and above the main (and backup) filter and compare the results to check the saturation level of the carbon filter.

#### Re-certification

All ductless fume hoods must be re-certified annually by a certified engineer.

## **5.2 Maintenance/Service Log**

It is good practice (and in some cases regulatory requirement) to maintain a log of all maintenance work carried out on your hood.



# **APPENDIX**



# LOG RECORD

---

Fume Hood : \_\_\_\_\_  
 Serial Number : \_\_\_\_\_  
 Person in Charge : \_\_\_\_\_

1. This log record should be used by the operator to record any new chemicals that has been introduced to the fume hood during its operation, problems encountered, etc.
2. Please also record any major maintenance procedure performed by the service technician, for example: parts replacement, recertification, etc.

Date	Event	User Signature	Supervisor Signature

In case of emergencies, please call:  
 Name : \_\_\_\_\_  
 Cell Phone Number : \_\_\_\_\_  
 E-mail : \_\_\_\_\_

