
Users Manual

Model YHC 4100 Series
HART® Communicator

YHC 4100 HART® Communicator



Model
YHC 4100 HART® Communicator

IMPORTANT NOTICE

Important information on the product is contained in this manual. Read this manual carefully and completely before operating the product. For the safety of the operator and the system, a thorough understanding of this manual is necessary before commissioning, using or maintaining the product.

ASSISTANCE

For customer assistance please contact the local Yokogawa Representative or Yokogawa Corporation of America directly. For a geographic listing of Representatives and their contact information, visit our web site at www.us.yokogawa.com/mi. Contact Yokogawa Corporation of America directly by phone at (770) 254-0400 or by e-mail at info@us.yokogawa.com. Direct all assistance inquiries to the Meter & Instrument group.

HART® is a registered trademark of the HART Communication Foundation.

Yokogawa Corporation of America

2 Dart Rd.
Newnan, GA 30265

TELEPHONE: (770) 254-0400
FAX: (770) 254-2088
E-mail: info@us.yokogawa.com
Web Site: www.us.yokogawa.com/mi

YHC 4100 HART Communicator USER'S MANUAL

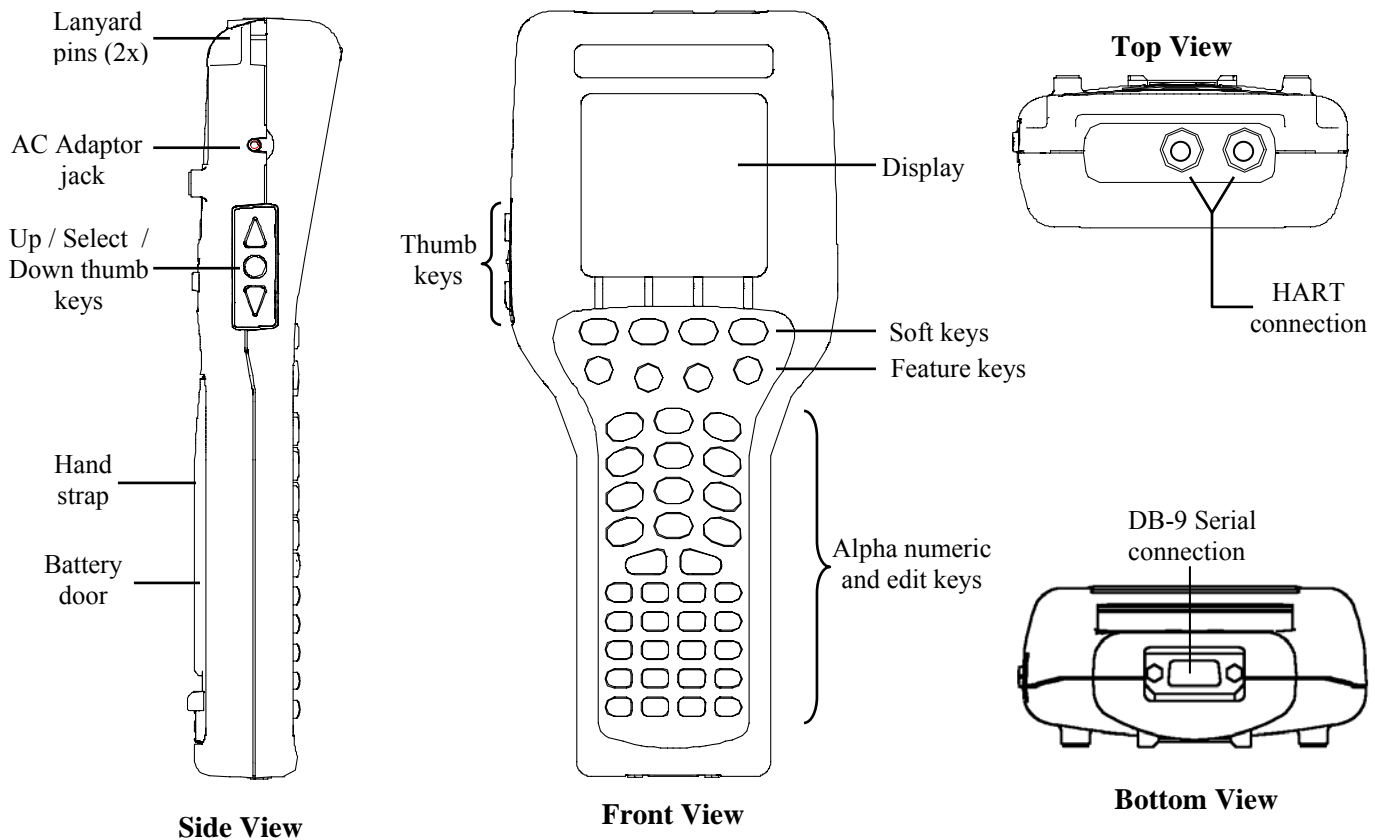
TABLE OF CONTENTS

| Subject | Page |
|---|------|
| YHC 4100 Communicator Overview..... | 1 |
| Display Overview..... | 1 |
| Header Line Symbols | 2 |
| Keypad Overview..... | 2 |
| Alphanumeric / Symbol Entry..... | 3 |
| Left / Right Arrow Keys | 4 |
| Soft Keys..... | 4 |
| Thumb Operated Keys | 5 |
| General Operation | 5 |
| Power Options..... | 5 |
| Navigating Menus on the YHC display | 5 |
| Turning on YHC | 6 |
| YHC Main Display | 7 |
| YHC Configurations Settings..... | 7 |
| 1 Users..... | 7 |
| 2 Applications | 7 |
| 3 Lockouts (Lockout, PV Prompt setting, View Lockout Details) | 7 |
| Lockout Code | 8 |
| Disable Lockout | 8 |
| Changing Lockout Code..... | 8 |
| 4 Clock / Timers..... | 8 |
| 1 Clock Edit..... | 8 |
| 2 Backlight (off timer)..... | 9 |
| 3 Off Timer (master) | 9 |
| 5 Other..... | 9 |
| 1 Model Information | 9 |
| 2 Battery Type selection..... | 9 |
| 3 HART Communication Mode selection..... | 9 |
| 4 Enter PC Comm. Mode | 9 |
| 5 Polling Type: Auto (default to address 0) or Digital (default poll for addresses 0 – 15)..... | 10 |
| Battery Installation & Removal (all YHC models)..... | 11 |
| External Connections to YHC..... | 11 |
| AC Adapter | 11 |
| HART jacks / lead set | 11 |
| DB-9 (Serial) Connection Port..... | 11 |
| Hazardous Area Use..... | 12 |
| Intrinsically Safe Operation | 12 |
| HART [®] Communications with YHC 4100 | 13 |

| | |
|---|-------|
| HART Commands..... | 13 |
| HART Connections..... | 13 |
| HART Communications..... | 14 |
| Initial Screens / Online Mode..... | 14 |
| Multidrop Poll (addresses 1 – 15)..... | 15 |
| Digital Poll (addresses 0 – 15) for One Power Cycle..... | 15 |
| Auto and Digital Poll Default Settings..... | 15 |
| Manual Launch of Device 0 Poll..... | 16 |
| Offline Menu Mode..... | 16 |
| 1 List / Show DOFs..... | 16 |
| 2 List / Edit Configurations..... | 16 |
| 3 Create Configurations..... | 17 |
| 4 Delete All Configurations..... | 17 |
| Delete Individual Configurations / Clearing Configuration Memory..... | 17 |
| Online Setup Mode..... | 18 |
| Communications Trouble Shooting..... | 19 |
| More Status Message..... | 19 |
| Save / Send Configuration Functions..... | 19 |
| DOF Memory Maintenance..... | 20 |
| Documenting HART Configurations with DMS Software..... | 21 |
| YHC 4100 Device Specific & Generic HART Communication..... | 21 |
| Using Generic HART Communications..... | 21 |
| Updating YHC 4100 Firmware and DOFs..... | 22 |
| Overview..... | 22 |
| Who has access to the Download Site..... | 22 |
| PC Requirements for Download Operation..... | 22 |
| Preparing the YHC..... | 22 |
| Using DPC Manager Utility to Update a YHC..... | 22 |
| Using the DOF Download Site Directly..... | 24 |
| Downloading from the DOF Download Site and Using DPC Manager to Update a YHC..... | 24 |
| Returning the YHC for Repair..... | 26 |
| APPENDIX | |
| Product Specifications Overview..... | 27 |
| YHC Models, Options, Ordering Information..... | 28 |
| YHC Accessories List..... | 28-29 |
| Intrinsically Safe Control Document..... | 30 |
| HART Command Structure Menu Trees..... | 31-34 |
| Generic (HART 5)..... | 31 |
| 1151 Rev 5..... | 32 |
| 3051C Rev 2..... | 33 |
| EJA Rev 2..... | 34 |

YHC 4100 HART COMMUNICATOR OVERVIEW

The YHC 4100 HART Communicator is a full function HART Communicator supporting Universal, Common Practice and Device Specific commands for commissioning, configuration and maintenance operations. HART field devices can be configured, polled, and trimmed using the YHC with HART communications.



Note: For Intrinsically Safe YHC models, consult the Hazardous Area Use section of this manual for specific details on use of approved YHCs and applicable restrictions.

DISPLAY OVERVIEW

The display of the YHC 4100 is a 128 x 128 pixel graphic display with backlight. Viewable area is 2.6" x 2.6" for 13 viewable message lines. The display provides three types of information: 1) header information including display titles, HART communication status indicator, SHIFT indicator, alpha or numeric entry mode indicator and battery gauge, 2) main data display section for display of YHC operating menus, HART menus, and device information, and 3) footer information defining the display's soft key functionality.

The following photo depicts the YHC Configuration display and Soft keys:



HEADER LINE SYMBOLS

- ♥ heart symbol indicates active HART communication
- ↑ up arrow indicates SHIFT key is on
- # number sign indicates numeric / symbol entry is the present entry mode for all dual functions keys
- A letter indicates alpha entry is the present entry mode for all dual function keys
- ▢ battery symbol indicates YHC under battery power; filled portion indicates remaining battery
- ⏻ electrical plug symbol indicates the AC adapter is connected and powering the YHC
- ▢ BUSY BUSY text box replaces either power symbol when the microprocessor is busy executing a previously requested task. Do not press keys when this status symbol is displayed.

KEY PAD OVERVIEW

The YHC keypad has three basic key types: single function keys, dual-function keys, and soft keys with changing definitions.

Single function keys control a dedicated YHC function.

Dual function keys, through the use of the Alpha Lock or Shift keys, toggle between two separate functions as needed to facilitate data entry.

Soft key functions change depending on the operating mode. Soft key definitions are displayed at the bottom of the LCD, just above their respective gray soft keys.

The left hand thumb keys can be used to scroll up, scroll down, and to select menu items.



On/Off

Pressing the ON/OFF key powers up or turns off the YHC. As the unit powers up, an internal diagnostic check is performed. Any abnormalities are posted on the display. The unit will briefly display the YHC model number and then check for a HART device with address of zero. If a device with zero address is found, the YHC immediately goes into online status and displays information about the device. If no device is found, the YHC enters the YHC Main navigation screen. To turn the YHC off, press and hold the ON/OFF key for approximately .5 seconds. Unit will power down provided a critical HART operation is not in process.



Quick Menu

The Quick Menu key initiates HART communications and then displays ten (10) HART menu choices for the connected device. These menus are used to short cut the traditional HART menus to enable the user to arrive quickly at desired functions. Typical Quick Menu options include: Main Menu, Config Menu, Rerange, Basic Info, Construction Materials, Display, Sensors, Signal Conditioning, Self Test. Quick Menu is disabled while critical HART operations are in process.



Home

Home

The key sequence **SHIFT, Home** returns the user to the initial or “home” HART menu for the connected device. The Home function is disabled while critical HART operations are in process.



Document

This key provides rapid access to HART communication Save/Send Configs options, List/Edit Configs, and Create Configs functions for all YHC models. For Documenting operations this key also provides documenting functions used with the Yokogawa Device Management System software. Access to this key is disabled while critical HART communications are in process.

Display Contrast



This key allows the user to adjust the contrast of the LCD display for ambient lighting and user preferences at any time and in any operating mode. Pressing and holding this key cycles through all available contrast settings. After adjusting Display Contrast, wait five (5) seconds before turning unit off to insure storage of new contrast setting. Compensated for ambient temperature.

Backlight



This key toggles the backlight feature between Off / Low intensity / High intensity to illuminate the display for ambient light conditions. Battery life is impacted by use of the backlight feature; High intensity is the most aggressive. An automatic shut-off timer is available by pressing the **Cfg** soft key from the main menu.

Alphanumeric / Symbol Entry



#



The alphanumeric keys have the heaviest population on the keyboard and are the method of entering data into the YHC. Each YHC display has a default alpha or numeric / symbol entry mode based on the most likely used mode for the display’s function. Pressing the ALPHA LOCK key activates the other entry mode for alphanumeric keys. Pressing the SHIFT key converts the next key stroke to the inactive entry mode and then automatically reverts back to the active mode. The letter “A” in the display header line indicates the alpha input is active while a # sign in the display header indicates the numeric / symbol input is active.



SHIFT

The SHIFT key is used to activate the secondary functions of the YHC’s dual function keys for the next keystroke only. When the SHIFT key is active, an up arrow ↑ is displayed at the top of the display to the left of the battery power (or AC wall plug) symbol. SHIFT is also used to activate the

Page Up and Page Down soft key functions while viewing lists of information (installed DOFs, stored configs, etc...).



Alpha Lock

This key changes the keypad's dual function keys from numeric/symbol entry mode to alpha character entry mode and back. The active entry mode is indicated in the display header line next to the power supply indicator on the upper right of the screen. The letter "A" in the display header line indicates that alpha entry is active while a # sign in the display header indicates that numeric / symbol entry is active.



Left / Right Arrow keys

These keys support cursor movement forward and backward for text / numeric editing needs. The default edit mode is "overwrite." For navigating functions, the left arrow emulates the **Back** soft key and the right arrow emulates the **Select** soft key.



Delete

This editing key will delete the character located above the cursor in a text / numeric string.



Insert

The Insert text edit function is activated by pressing the **Shift, INS** key sequence. Once activated, the next alpha or numeric / symbol keystroke will be inserted into the open text field. The "overwrite" default mode is restored upon completion of the insert operation.

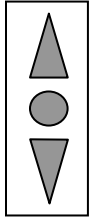


Soft Keys (unlabeled)

The four gray keys located immediately below the display are Soft Keys. The specific functions of these keys change depending on the operating mode of the YHC. Present definitions are displayed at the bottom of the YHC display. Whenever possible the two Soft Keys on left are used for navigation functions, the third from the left for action functions, and the right most for back function.




The following are examples of Soft Key definitions and their uses:

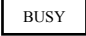
- Up** – moves indicator arrow up one line in a menu list
- Down** – moves indicator arrow down one line in a menu list
- Select** – selects the indicated menu item
- Cfg** – provides access to YHC configuration settings (Users, Applications, Lockouts, Clock / Timers, Other)
- Back** – returns to prior display
- Inc** – Increment the value shown above the cursor
- Dec** – Decrement the value shown above the cursor
- Next / Prev** – these keys move to Next or Previous item within the list function accessed.
Next and Prev are for navigation only.
- Done** – Ends data entry session and proceeds with the selected operation
- Edit** – activate edit function for displayed parameter
- Abort** – aborts present operation without affecting prior settings or values
- Save** – saves the present value
- Store** – stores the present value
- Yes** – affirmative response to question presented
- No** – negative response to question presented
- Trim** – executes the trim function called for by the HART menu option selected
- Chng** – change the present menu setting



Thumb operated keys

Up, Select, and Down side keys provide convenient alternate methods of menu navigation. Use these in addition to Soft keys and numbered HART menu lines to make menu navigation fast and easy.

-  = Up = Prev
-  = Select, Edit
-  = Down = Next

Do not use these keys when the  symbol is displayed.

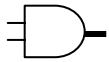
GENERAL OPERATION

Power options

The YHC 4100 can be powered for portable operation by two each 9-volt alkaline, Lithium or NiMH batteries. Alkaline batteries are standard with the YHC shipment. Yokogawa offers NiMH batteries and charger cradles (external charge only) as an option. For bench top operations and download operations, an AC adapter (P/N A37003) is recommended.



Located in the upper right corner of the display, this icon displays the remaining battery power. Fresh batteries produce a full black cell body. As the power drains, the black segment retreats indicating remaining power.



When the YHC is used with the optional AC adapter (P/N 9B000007), the battery circuit is bypassed and a wall plug icon replaces the battery icon on the display header. The AC adapter jack is located on the left side of the YHC.

NOTE: Power icons may temporarily disappear during certain HART Communication operations

Navigating Menus on the YHC display

Several methods of navigating through the YHC menus are available to the user for maximum convenience and utility.

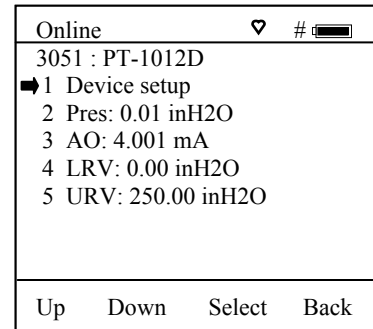
1. **Soft keys:** Use **Up** and **Down** Soft Keys to move cursor arrow to the desired menu option. Then use the **Select** soft key to accept the indicated choice. Soft key navigating tools are found throughout the YHC Main displays and HART communication displays.
2. **Side keys:** **Up**, **Down** and **Select** keys are also provided on the left hand side of the YHC. These keys are thumb operated and provide a convenient alternative to the Soft Key navigation buttons. Side key functionality is not always available in the HART communication displays.
3. **Multi-page lists:** Multi-page lists have a Δ and/or ∇ symbol along the right hand side of the display indicating the existence of information on the previous or next page(s). Several pages of information may need to be viewed when reviewing lists of installed DOFs, stored configuration files or finding a specific device in Offline Mode to create a configuration for. While in these list areas, pressing the SHIFT key changes soft key definitions **Select** and **Back** to **PgUp** and **PgDn**, respectively. To quickly advance to the next page of a list, press **SHIFT** and then the **PgDn** soft key. To retreat to the prior page, press **SHIFT** and then **PgUp**. **PgUp** and **PgDn** soft keys remain active until the **Up** or **Down** soft key is used or until **SHIFT** is pressed again.

4. **Numbered HART menus:** All HART displays have numbered menu lines when needed. This gives fast access directly to the desired menu line. YHC displays also have numbered menus with the exception of multi-page list screens.
5. **HART menu HOME key:** To quickly retreat from any location in the HART menu to the initial HART menu screen for a device, press the **SHIFT, HOME** key sequence. This will return the display to the initial HART screen. The Home function will be disallowed if a critical HART task is in process.
6. **Left / Right Arrow keys:** Emulate **Back** and **Select** soft keys, respectively

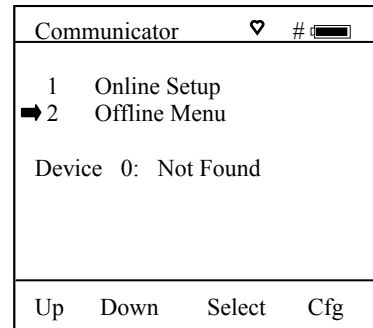
Turning on the YHC

Use the dedicated **ON/OFF** key to power up the YHC. A brief diagnostic runs while the Yokogawa logo, YHC model number, and YHC firmware version is displayed. A message is displayed indicating the YHC is scanning for a HART device at address zero. The following scenarios are possible.

1. If the YHC is connected to a HART device with address = 0 (and there is sufficient loop resistance), the YHC immediately establishes HART communication with the device. A display similar to the example at right appears. The numbered menus and Soft Keys are then used to commission, re-configure, or maintain the connected device.

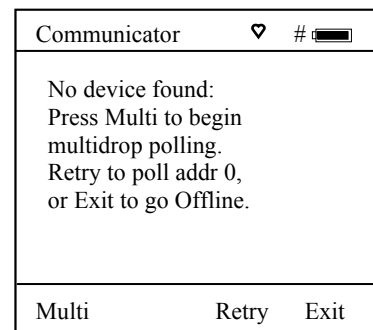


2. If no HART device is connected, if a HART device with address ≠ 0 is connected, or if a connected device is not found due to wiring or loop resistance problem, the YHC will enter the YHC Main navigation display depicted at right.



- 2.1 Select **Online Setup** once a HART device is connected or once the wiring problem is resolved. A proper connection will be indicated when line three changes to "**Device 0: *Online***".

- 2.2 Select **Online Setup** if properly connected HART device is setup for Multidrop loop or Burst Mode operation (device address ≠ 0). The YHC will respond with a statement and the Soft Key options shown at right. To initiate a Multidrop poll, press the **Multi** soft key. To retry the address 0 poll after rechecking connections, press the **Retry** soft key. Press the **Exit** soft key enter Offline mode.



YHC Main display

The YHC Main display provides access to Online Setup, Offline Menu and to YHC configuration settings via the right hand Soft Key (**Cfg**).

1. **Online Setup** is described above in Turning On the YHC.
2. **Offline Menu** is selected to provide access to Offline Utilities such as List / Show DOFs, List / Edit Configurations, and Create Configurations. The number of DOFs installed (HART device profiles) and the number of device Configurations stored are also available on Offline Utilities screen. See the Offline section of this manual for more information.
3. **Cfg Soft Key** is selected to configure YHC settings and view YHC information such as Model, Serial, and Firmware numbers, DOFs installed and Configurations stored.

| Communicator | | ♥ | # | ▬ |
|---------------------|--------------|--------|-----|---|
| ➔ 1 | Online Setup | | | |
| 2 | Offline Menu | | | |
| Device 0: *On-Line* | | | | |
| Yokogawa | | | | |
| EJA | | | | |
| Fld Dev Rev 02 | | | | |
| Dof Name 37040213 | | | | |
| Up | Down | Select | Cfg | |

| Configuration | | # | ▬ |
|------------------|--------------|------|------|
| Current Settings | | | |
| ➔ 1 | Users | | |
| 2 | Applications | | |
| 3 | Lockouts | | |
| 4 | Clock/Timers | | |
| 5 | Other | | |
| Up | Down | Chng | Back |

YHC Configurations Settings

1 Users

This menu item is only active for 21CFR Part 11 documenting versions. See separate 21CFR Part 11 instructions in this case.

2 Applications

Various applications are available here including Digital Poll (polling device addresses 0 – 15) and other user and factory applications.

3 Lockouts

The YHC HART Communicator can be programmed to lockout certain standard functions that a supervisor may wish to control. The functions included are used to set up the YHC for normal use, change online HART device configurations, create offline HART device configurations, update the installed DOFs list (HART device profiles), or to update the YHC's operating firmware. For example, locking out the Configs feature turns the YHC into a read only HART communicator while locking out DOFs and Firmware prevents unauthorized updates. The lockout can be limited to individual Lockout Details items or all Lockout Details items can be locked out at one time.

To enable the lockout feature, press the “3” key or move the selection cursor ➔ to the **Lockouts** menu option on the Configuration screen (see below). Choose the **Lockouts** selection by pressing the **Chng** soft key. The YHC will enter the **Lockout Enable / Disable Screen**. The current status is shown and three choices are provided:

| Configuration | | # | ▬ |
|--------------------|-------------------|------|------|
| Lockout : Disabled | | | |
| ➔ 1 | Lockout Disable | | |
| 2 | PV Prompt Disable | | |
| 3 | View Details | | |
| Up | Down | Chng | Back |

Lockout Enable / Disable Screen

| Configuration | | # | ▬ |
|-----------------|------------|------------|------|
| Lockout Details | | | |
| ➔ 1 | All | : Disabled | |
| 2 | Setting | : Enabled | |
| 3 | DOFs | : Disabled | |
| 4 | Configs | : Disabled | |
| 5 | Firmware | : Disabled | |
| 6 | PV Prompt: | Enabled | |
| Up | Down | Chng | Back |

Lockout View Details Screen



1 Lockout: Indicates Enable / Disable status of Master Lockout feature.

2 PV Prompt: In addition to the primary variable, multivariable HART devices have secondary, tertiary, and sometimes more variables. When PV Prompt on the Lockout screen is “Disabled” and a Save command is issued by the YHC, the handheld saves only the primary variable. When PV Prompt is “Enabled” and a Save command is issued, the handheld saves the HART parameter information for all variables present. The factory default for PV Prompt on the Lockout screen is “Disabled”.

3 View Details: This option takes the user to the **Lockout Details** screen listing all YHC parameters that can be protected by lockout (see above right). Individual functions can be locked or, if preferred, the lockout can be set to deny unauthorized access to all parameters. Press the number of the desired menu item to toggle between Enabled and Disabled. Once satisfied with the setting, press the **Back** soft key to return to the **Lockouts** screen.

To enable the lockout option, be sure the display reads “1 Lockout Enabled”. If not, press the **Chng** soft key to toggle from “Disabled” to “Enabled”. Then press the “1” key, which corresponds to the Lockout menu line number. The Lockout Enter Code screen is displayed.

Lockout Code

At this point the user will be prompted to enter a 3-digit lockout code. This code will be required to gain access and change any parameter previously locked out. **The number keys of the YHC will not work here.** Use the **Increment**, **Decrement** and **Next** Soft Keys to input a lockout code value. Alternatively you may use the   green keys for **Increment** and **Decrement** functions. When you are satisfied with the lockout code value, press **Store**. Note: the YHC is shipped with a factory lockout code of 3 2 1. The user must enter this code the first time Lockout is used.

IMPORTANT: After the code is entered, the user must cycle the power to activate the lockout mechanism! BE SURE TO SAVE THIS CODE IN A SAFE PLACE IN THE EVENT YOU FORGET THE NUMBER. ACCESS TO LOCKED-OUT FEATURES WILL BE DENIED WITHOUT THE PROPER CODE.

Disable Lockout

When you wish to use a function or edit a value that is protected by the lockout code, enter the three digit Lockout code when prompted and press **Save**. You will now be able to use the function or edit the setting as normal. Entering an incorrect code will display the message “Incorrect Code” and allow you to try again.

Changing the Lockout Code

To change the lockout code, disable the lockout function for all the parameters selected, shut the unit off, and follow the procedures outlined above.

4 Clock / Timers

Clock Edit

The Clock Edit option allows the user to correct the date and time of the YHC’s internal clock. To edit the clock, press the “4” key or scroll **Down** to **Clock Edit** and press the **Chng** soft key.

Choose a clock or date option to adjust by scrolling **Up** or **Down**. Press **Chng** to choose that option. Enter the correct value using the numeric keypad. You will be asked if you wish to save the new data. Press **Yes** to accept the new value. Pressing **No** will take you back to the previous menu without making any changes to the YHC clock. When all the changes are complete, press **Chng** to save the new value.

NOTE: When replacing the batteries, the date and time will remain active. Date & time information is continuously powered by an internal, 10-year life back-up battery. This battery is not serviceable by the user.

Backlight (off timer)

To conserve battery life, the YHC 4100 series allows the user to set the backlight to shut off after a certain period of keypad inactivity. To change the backlight off timer on the unit, scroll **Down** to **Backlight** and press **Chng** repeatedly until the desired value is displayed.

The shutoff timer can be disabled or set to shut off after time periods of from 1 minute up to 30 minutes.

NOTE: The Backlight Off Timer is disabled when the optional AC Adapter (P/N 9B000007) is powering the YHC.

Off Timer (master)

To conserve battery life, the YHC 4100 series allows the user to set the unit to shut off after a certain period of keypad inactivity. To change the off timer on the unit, scroll **Down** to **Off Timer** and press **Chng** repeatedly until the desired value is displayed.

The shutoff timer can be disabled or set to shut off after time periods of from 1 minute up to 2 hours.

NOTE: The Off Timer is disabled when the optional AC Adapter (P/N 9B000007) is powering the YHC.

5 Other

Model information and special settings are available from this menu item. Press number key “5” or arrow to this menu line and press **Chng** to select. This reveals menu options for the following:

- 1 Model Info** – select to view model number, serial number, firmware revision, last update date, number of DOFs loaded and corresponding free memory space, and number of HART configurations saved and corresponding free memory space.
- 2 Battery** – shows present battery setting and optimizes the battery life indicator for the battery type entered. Press number key “2” to scroll through Alkaline (factory default), NiMH and Lithium battery options or arrow down to this menu item and press **Chng** soft key repeatedly until the desired value is displayed.
- 3 HART** – shows present HART[®] communication setting. The YHC is a HART[®] secondary master. “Compatible” setting means the handheld will inform the user if another secondary master is on line. Such situations will require the removal of the other secondary master before HART communication can occur. “Fast” setting results in faster communications but will cause interference if a HART[®] primary master is on line (example: a HART[®] Multiplexer or I/O). In normal operation the YHC automatically selects the best setting.
- 4 Enter PC Comm. Mode** - When the YHC is connected to a PC for updates via DPC Manager (see DPC Manager Utility section in this manual), a DB-9 serial cable is used. Occasionally a DB-9 Serial cable is encountered that does not have a DTR line. The DTR line is important to the update process because it is used to initiate and confirm communication between the two machines. If a DB-9 cable without a DTR line is used, the YHC must be manually placed in the **Enter PC Comm. Mode**. Go to the YHC Main display and select **Cfg**. Select menu option **5 Other**. Select the **Enter PC Comm. Mode**. Proceed with update and cycle YHC power when the update is complete. It is recommended to use fresh batteries or an AC adaptor during update procedures. This mode will automatically time-out after approx. 1 minute of inactivity and return to the main display.

5 Polling Type – Two user selectable options are available.

Auto polling directs the YHC to always poll for HART device address 0 (zero) first. When found, communications begin automatically. If address 0 is not found, the YHC automatically asks for direction; select **Multi** soft key to start a multi-drop poll from address 1 – 15 or select **Retry** soft key to try to find address 0 again (for more details see the HART Communications section)

Digital polling directs the YHC to always poll for HART device addresses 0 – 15. This polling method is best for 4 – 20 mA loops where one device with address 0 is present and another device with a non-zero address is on the same loop.

Battery Installation & Removal – all YHC models

The YHC monitors battery condition and displays a “REPLACE BATTERY” notice when the batteries get low. The YHC will function for a short period of time after the notice is posted.

To install or remove the batteries, remove any soft case or protective boot and turn the YHC face down on a work surface. Use a flat screwdriver to loosen the captive screw holding the battery door closed and remove door. Replace batteries and make sure all connections are firmly secured. Replace door, tighten screw and replace the soft case or boot.

Note: *Replace both 9-volt batteries at once with all alkaline, all lithium or all NiMH cells. Do not mix alkaline, lithium or NiMH batteries with each other or with other battery types. Battery replacement is recommended when the “Replace Batteries” notice is posted on the display; however, the YHC will function for a time after the notice is posted.*

Note: *For Intrinsically Safe YHC models, replace batteries only in Non-Hazardous Areas. Replace batteries with approved types only. See the YHC Intrinsic Safety Control Document shipped with the handheld for approved battery details.*

External Connections to YHC

1. AC Adapter – The YHC 4100 can be powered by an external AC Adapter connected to the jack located on the left side of the YHC. P/N 9B000007 bypasses the battery circuit to power the unit. The battery symbol in the display header is replaced by a wall plug symbol.

WARNING: *Serious injury or death may result from explosions. Do not make connection to the AC adapter jack in a hazardous area. Use the AC adapter only in non-hazardous areas.*

2. HART lead set – All YHC models are equipped with a standard size banana jack on 0.75” center. The lead set supplied with the YHC has a standard banana plug on one end and mini-grabbers on the other for convenient connections.

Note: *For Intrinsically Safe YHC models, verify the instruments in the loop are installed in accordance with intrinsically safe field wiring practices before making connection from the field device to the YHC’s HART jack. See Hazardous Area Use Section of this manual for Intrinsically Safe guidelines / restrictions.*

3. DB-9 Connection Port – All YHC models are equipped with a standard DB-9 connection for RS-232 communications. The DB-9 provides the hardware interface to facilitate download / upload operations from a host PC. This connection port facilitates download of YHC firmware improvements, HART[®] Device Object Files (DOFs) and documenting operations. All YHC upgrades are available via the Yokogawa Download Site accessible from www.us.yokogawa.com/mi. The YHC will not need to be returned to Yokogawa for firmware updates or for the addition of DOF files.

Note: *Do not use the DB-9 connection port in Hazardous Areas. Use in non-hazardous areas only. See Intrinsic Safety Control Document shipped with the handheld for more details on Intrinsically Safe YHC units.*

HAZARDOUS AREA USE

Intrinsically Safe Operation

The YHC 4100 HART Communicator is available with Intrinsically Safe Certification for use in Class I, Division I, Groups A, B, C, and D, T5 hazardous areas. Refer to the Intrinsically Safe Control Document in the Appendix of this User's Manual for more details. The certification is to CAN /CSA-22.2 No.1010.1 & 157-92 and UL913 Fifth Edition Rev 2/21/97.

The following table identifies Intrinsically Safe YHC model numbers and areas of acceptable use.

| Model Number | Non-hazardous Area | Hazardous Area |
|----------------------------|--------------------|----------------|
| YHC 4100-01-1-01-0-01-1-01 | √ | √ |

YHCs with Intrinsically Safe certification can be identified by model number (see table above or the Intrinsically Safe Control Document in the Appendix) or by a special label on the unit. A sample of the label is shown below.



WARNING: Serious injury or death may result from explosions. Do not make connection to the DB – 9 connection port or to the AC adapter jack while in a hazardous area.

WARNING: Serious injury or death may result from explosions. Before making electrical connections to an Intrinsically Safe YHC at the HART jacks, verify the instruments in the loop are installed in accordance with intrinsically safe field wiring practices.

Note: Restrictions apply to the use of Intrinsically Safe YHC units in hazardous areas. Refer to the Intrinsically Safe Control Document shipped with the handheld for exact details. The Appendix of this manual contains an uncontrolled copy of this document. Yokogawa reserves the right to revise the Control Document without notice. Contact Yokogawa (phone 800-356-9464) for the current Intrinsically Safe Control Document.

For Intrinsically Safe YHC models, consult the Hazardous Area Use section of this manual for restrictions, for special instructions in use, and for electrical connections.

HART[®] Communications with the YHC 4100

Overview

The YHC 4100 HART communicator provides device specific HART communication functions that allow the user to poll, configure and maintain supported HART field devices. The YHC 4100 uses Universal, Common Practice and Device Specific commands to facilitate communication with a HART field device. Use the YHC to commission devices, for operational re-configuration needs, or maintain devices through analog and sensor trim adjustments and many other features.

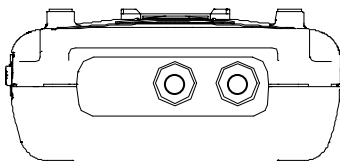
The YHC 4100 will communicate with any HART device through Universal and Common Practice Commands using the standard Generic DOF (Device Object File) but must have the DOF for a specific HART device installed before it can execute Device Specific Commands. Consult the large and growing list of available DOFs at www.us.yokogawa.com/mi for an up to date list of HART devices with device specific support. The list is found under “Available DOFs” link on the YHC / YPC page. When HART device support for new devices becomes available, the YHC can be easily field updated via Internet downloads.

HART Commands

Three HART command types are used by the YHC 4100 to communicate with HART field devices. First, *Universal Commands* are primarily used to identify a field device by its model number and tag number and to read process data from the device. This communication is referred to as “polling”. The YHC 4100 can poll any Hart Device. Second, *Common Practice Commands* are used for calibration and maintenance functions that are common to many devices. An example of this would be trims or adjustments for the devices’ analog outputs. Third, *Device Specific Commands* are used to handle functions that are unique to a particular device or manufacturer. Examples of these commands include sensor zero, sensor trim, calibration curve characterization, density inputs required for calculations made by the HART device or other configuration functions unique to the specific device.

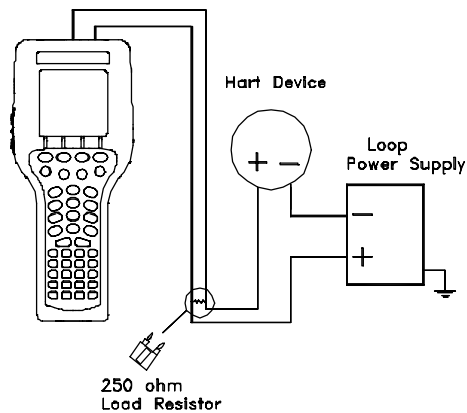
HART Connections

HART connections are made using two standard banana jacks (3/4” center) located at the top end of the YHC 4100. Refer to the following diagram. Polarity is not a concern for HART connections so both jack collars are black. Yokogawa supplies a HART lead kit (P/N A900529-00014) complete with mini-grabber connections and a 250 Ω load resistor with each model YHC 4100.

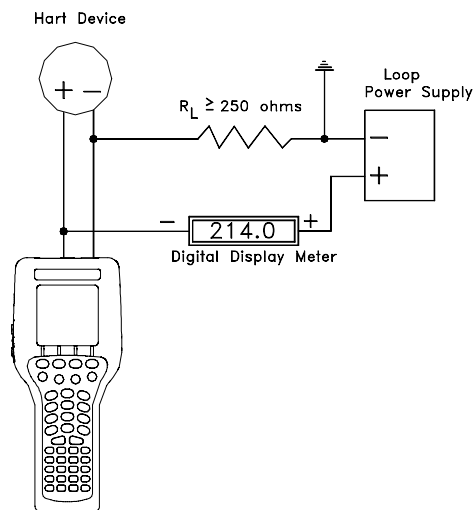


YHC 4100 with HART[®]
HART[®] connections are standard banana jacks (3/4” center)

For low load loops (less than 250 Ω), a 250 Ω resistor will need to be added to the loop to insure reliable HART communications. Yokogawa supplies a 250 Ω load resistor in the form of a standard adaptor (P/N A36821). Refer to the following diagram for connection details.



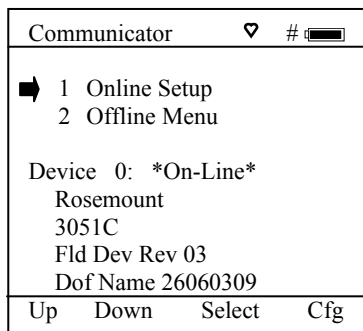
When connecting the YHC 4100 to a loop with a resistive load greater than 250 Ω s, the HART jacks may be connected across the loop + and - or to the HART device communication terminals. Refer to the following diagram for connecting across the loop + and -.



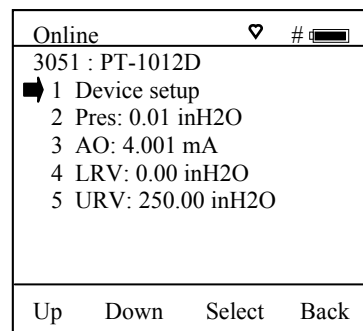
Connecting to the YHC communication terminals

HART® Communications Initial Screens / Online Mode

Upon power up the YHC automatically detects if a field device is connected and attempts to establish HART communications; this is the factory default “Auto” poll function. When a device with address zero is found, the YHC provides feedback to the user and starts the initial HART display for the connected device. See an example of Online Mode below.

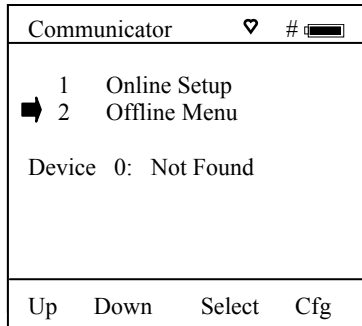


YHC Main Navigation Screen
Auto Poll Launch; Device “0” found

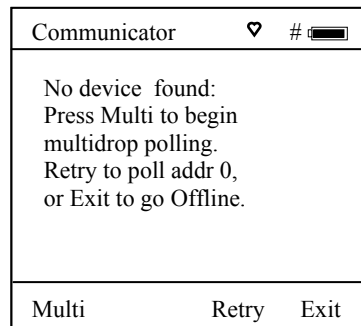


Initial HART Screen / Online Mode

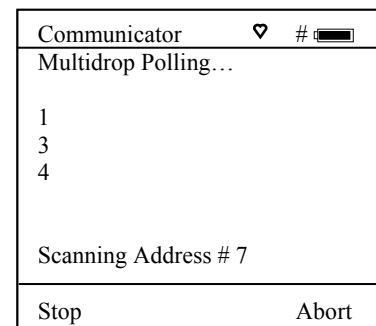
When no device connection is detected the YHC enters the **YHC Main** navigation screen and the message **Device 0: Not Found** is displayed. Upon selecting the “1 Online Setup” option, the YHC checks again for Device address 0 and if not found displays the **YHC Multidrop / Retry 0** screen. This screen allows selection of either of three options: launch Multidrop poll by selecting the **Multi** soft key, retry Device 0 communication after re-checking physical connections to the device by the selecting **Retry** soft key, or exit to Offline mode by selecting the **Exit** soft key.



YHC Main Navigation Screen
No device or Non-zero address found



YHC Multidrop / Retry 0 Screen
No device or Non-zero address found



Multidrop Polling Screen
Multidrop & Burst Mode Support

Multidrop Poll (addresses 1 – 15)

To initiate a Multidrop Poll, select the **Online Setup** option from the **YHC Main** screen when the **Device 0: Not Found** message is displayed. Then select **Multi** soft key from the **YHC Multidrop / Retry 0** screen. This function polls for all non-zero addresses (1 – 15). Located addresses are listed on the display as the remaining addresses are checked. When polling is complete, or upon pressing **Stop** after the address of interest is found, use the soft key controls to select the address of interest. The initial HART menu for the selected device will be displayed.

Digital Poll (addresses 0 – 15) for One Power Cycle Only

Digital Polling is a special feature accessible through the YHC’s Main navigation screen and the **Cfg** soft key. Press the **Cfg** soft key and then select the “2 Applications” menu option. Select the “1 Digital Poll” menu option to launch a polling operation that starts with address 0 and ends with address 15. All addresses on the loop will be displayed on the YHC’s screen. The address of interest can be selected from the list to launch HART communication with that device. This Digital Poll is for one power cycle only and can only be launched from this location in the handheld’s menu structure. Turning the YHC power off will return the unit to the YHC’s default HART poll setting.

Auto and Digital Poll (addresses 0 – 15) Default Setting Options

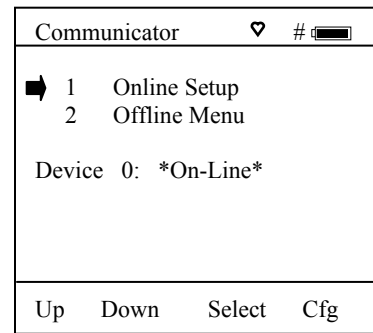
Auto Poll is the factory default setting. To set Digital Polling or re-set Auto Polling as the YHC’s default poll setting, press the **Cfg** soft key and then select the “5 Other” menu option. Select “5 Polling Type.” Two user selectable options are available.

Auto polling directs the YHC to always poll for HART device address 0 (zero) first. When found, communications begin automatically. If address 0 is not found, the YHC automatically asks for direction; select “**Multi**” from soft key to start a multi-drop poll from address 1 – 15 or select the “**Retry**” soft key to try to find address 0 again.

Digital polling directs the YHC to always poll for HART devices addresses 0 – 15. This polling method is best for 4 – 20 mA loops where a device with address 0 is present and another device with a non-zero address is on the same loop. Selecting Digital Polling here sets it as the YHC’s default poll setting.

Manual Launch of Device 0 Poll

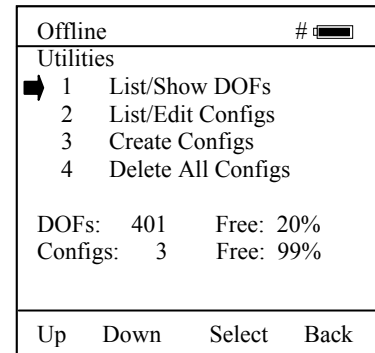
When the message **Device 0: *On-line*** is displayed on the YHC Main navigation screen, selecting **Online Setup** will launch HART communication with the device. The message indicates that a HART device with address 0 has been detected at the HART connection and the YHC is standing by to initiate communications. The **Device 0: *On-line*** message is shown 1) if a physical connection is made to a HART device after the YHC power is turned on or 2) if the user exits from a HART communication session without disconnecting the lead wire by using the soft key controls provided.



YHC Main Navigation Screen
Manually launch polling on device 0.

Offline Menu Mode

The **Offline Menu** gives the user access to lists and functions that can be viewed or performed in Offline Mode at the user's convenience for the purposes of reviewing the YHC's DOF list, reviewing stored device configurations or creating HART configurations. Stored configurations can also be edited and then applied later to a connected HART device. When the **Offline Menu** is selected from the **YHC Main** navigation screen, the display at right is shown.



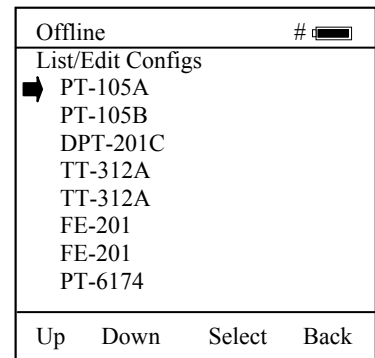
HART Offline Menu Screen

1 List / Show DOFs:

Provides a list of installed DOFs (Device Object Files) used by the YHC to communicate with HART devices. Lists can be viewed by Manufacturer, by Device Name or by stepping through all Devices one at a time. Use the soft key controls to move through the list. Pressing the SHIFT key changes soft key definitions **Down** and **Up** to **PgUp** and **PgDn**. To quickly advance to the next page of a list, press the **PgDn** soft key. To retreat to the prior page, press the **PgUp** soft key. Once engaged the **PgUp** and **PgDn** soft keys remain active until the **Up** or **Down** soft keys or **SHIFT** is pressed again.

2 List / Edit Configs:

This screen lists all stored HART configurations by Tag Number. The configurations stored enable fast commissioning of replacement devices, cloning of existing systems, or re-configuring for changes in process conditions or batch runs. Any configuration in the list can be sent to another HART device of the same manufacture and model. The display can show 20 character tag numbers. Truncated tags are listed if more than 20 characters are used. Moving the cursor down to the tag of interest and pressing the **Select** soft key will provide a detailed information screen, including full tag number up to 28 characters, for the tag of interest (see example below, right).



Offline List / Edit Configs Screen

The editing function allows review of all HART parameters in a configuration and modification of editable parameters. The edit function can be locked out if desired (see the **Lockout** section of this manual for more information). To view detailed information of a stored configuration, move the cursor to the desired tag number and press the Select soft key. The Config Detail screen (see example at right) provides information to help the user confirm the identity, origin, and save date/time of the configuration. Pressing Select again opens the configuration for review or offline editing.

New configurations saved are added to the bottom of the List / Edit Config list. If multiple entries for one device are shown, the most recently saved configuration is always shown at the bottom.

Entries in the List / Edit Config list may have been saved or created from various sources. Possible sources include the save command from a connected HART device, created in the YHC using the **Create Configs** function, copied from another configuration and renamed, or created by editing an existing file. The YHC will also list configurations downloaded from the separately available Device Management System software from Yokogawa (see <http://www.yokogawa.com/us/mi/pdf/DMS%20USA.pdf> for more information). Tag numbers, date / time of save, type of configuration stored, and other information are displayed under **List/Edit Configs**. Configuration types are:

- Complete Config = saved from connected device in Online mode, or a complete config that was downloaded from DMS
- Default Config = created by YHC in Offline mode, or created in DMS and downloaded to YHC
- Edit Vars Only = created by editing an existing configuration and includes only the edited parameters
- MVar Primary Cfg = for multivariable devices – Primary Variable configuration
- MVar Sub Config = for multivariable devices – Sub-configuration (secondary, tertiary, fourth, etc variables)

3 Create Configs:

The **Create Configs** function allows the user to configure a HART device file in Offline Mode for sending to the intended device later when connected in the Online Mode. Use the soft key controls to move through the list and select the device model number required. The menus prompt the user to make the necessary configuration selections, tag the file for later retrieval and use, and edit configuration lines as required. This function can be locked out. See the Lockout Section of this manual for more information.

4 Delete All Configs:

The **Delete All Configs** function clears **all** configurations from memory (including active and hidden configs). When this menu option is selected, the YHC will ask “Delete ALL Configs... ARE YOU SURE???” Select **Yes** to clear **all** stored configurations from memory.

Delete Individual Configs / Clearing Configuration Memory:

Individual stored Configurations may be deleted with YHC **Del** soft key function (see example at right). When this menu option is selected, the YHC will ask “Delete CURRENT Config... ARE YOU SURE???” Select **Yes** to clear only the selected configuration from memory.

The **Del** key only hides the record from the YHC screen; it does not clear memory space. This function can be locked out. See the Lockout Section of this manual for more information.

| | |
|-------------------|-----------------|
| Offline | # |
| List/Edit Configs | |
| Tag: PT-105A | |
| Device ID 1365 | |
| PV: Pressure | |
| Endress + Hauser | |
| Cerabar S | |
| Complete Config | |
| Uses DOF 11070702 | |
| 51 Variables | |
| 12/18/03 4:58 PM | |
| Copy | Del Select Back |

**Offline List / Edit
Configs Detail Screen**

| | |
|-------------------|-----------------|
| Offline | # |
| List/Edit Configs | |
| Tag: PT-105A | |
| Device ID 1365 | |
| PV: Pressure | |
| Endress + Hauser | |
| Cerabar S | |
| Complete Config | |
| Uses DOF 11070702 | |
| 51 Variables | |
| 12/18/03 4:58 PM | |
| Copy | Del Select Back |

**Offline List / Edit
Configs Detail Screen**

Online Setup Mode

Online Setup is the normal HART communication mode for the YHC. This mode enables communication with HART field devices at the Universal, Common Practice and Device Specific Command levels for full device setup and functionality.

Menus displayed for the connected device follow the HART device manufacturer's menu structure for the connected device. Consult the device manual for menu structure details.

YHC features two unique online features for added convenience to the user.

1. Live HART connection monitor: YHC display lets you know from the Main navigation screen when a device is * **On-line** * and ready for communication.
2. **Review/Edit**: this menu option allows the user to review configurations line-by-line. YHC supports editing of the configuration once the parameter of interest is located.

| | | | | | | |
|---------------------|--|------|--|--------|---|------|
| Device Setup | | | | ♥ | # | 🔋 |
| 3051 :PT-1012D | | | | | | |
| 1 Process variables | | | | | | |
| ➡ 2 Diag/Service | | | | | | |
| 3 Basic setup | | | | | | |
| 4 Detailed setup | | | | | | |
| 5 Save/Send | | | | | | |
| 6 Review/Edit | | | | | | |
| Up | | Down | | Select | | Back |

Online Device Setup Screen

Communications Trouble Shooting

If an operating HART device is connected to the YHC but the “Device 0: Not Found” notification is received, a Multidrop Poll may be executed to determine if the connected device has a non-zero address. Select **Online Setup** from the YHC Main navigation screen and then select the **Multi** soft key to initiate the Multidrop poll. If the “No Devices Found” message is received, then the loop connections to the YHC should be carefully checked.

If an operating HART device with address zero (0) is connected to the YHC but the “Device 0: Not Found” notification is received, the loop connections to the YHC should be carefully checked.

Make sure all connections are correct and secure. Check for shorts, open circuits and multiple grounds.

Determine if the loop resistance is greater than 250Ω and less than 1100Ωs. If less than 250 Ω then use the supplied 250 Ω load resistor in series with the loop (see diagram HART Connections section).

If communication is still not established, check the **List / Show DOFs** menu under **Offline Menu**. Check the list for the presence of the “Generic” DOF under the manufacturer name “Yokogawa.” If “Generic” is found, then HART communication is possible when the device is properly wired and connected to the YHC (see connection troubleshooting details above).

When the message “Generic” is displayed after connecting to a HART device there are two possible causes:

- 1) No device specific DOF for that device is currently installed in YHC memory. Check for availability of the DOF needed by going to the Available DOFs site at <http://dpcupdates.1911mptdofs.com/customers/past.asp> . Sort the list by clicking on any column header. For download instructions, see the DOF / Firmware Download Site section of this manual.
- 2) The connected HART device supports only HART Universal and Common Practice commands (i.e. generic commands). There are several such devices on the market, particularly level type devices.


More Status Message


HART device events (diagnostic flags) cause the YHC to display a “More Status Message” at the bottom of the display. This message is a notice to the user that one or more diagnostic warnings are available in the Review Status menu option of the connected device. Upon receipt of this message, enter the **HART** mode and select Detailed Setup / Diagnostics – Service / Test – Status / View Status to retrieve the diagnostic information.

Save / Send Configuration Functions

HART device configurations may be saved to YHC memory or sent from YHC memory to a HART device. These functions are useful for cloning a device configuration for use in another transmitter of the same configuration, for recording as-found and as-left configurations for later review, for returning HART devices to previously used configurations, etc...

The Save / Send function may be accessed in one of two ways:

1. Press the Document key  on the YHC for the screen shown at right. Then select the “Save/Send Configs” menu option to launch a HART communication poll and use the Save / Send options.
2. Use the Save / Send menu option within the HART device’s standard menu. The YHC would be in Online mode in this case. Save / Send is normally found under the “Device Setup” menu option on the initial HART display for the device.

| | | |
|-----------|--------------------|---|
| Offline | # |  |
| Utilities | | |
| ➡ 1 | Save/Send Configs | |
| 2 | List/Edit Configs | |
| 3 | Create Configs | |
| 4 | Delete All Configs | |
| DOFs: | 401 | Free: 20% |
| Configs: | 3 | Free: 99% |
| Up | Down | Select Back |

Document Key Menu Screen

DOF Memory Maintenance

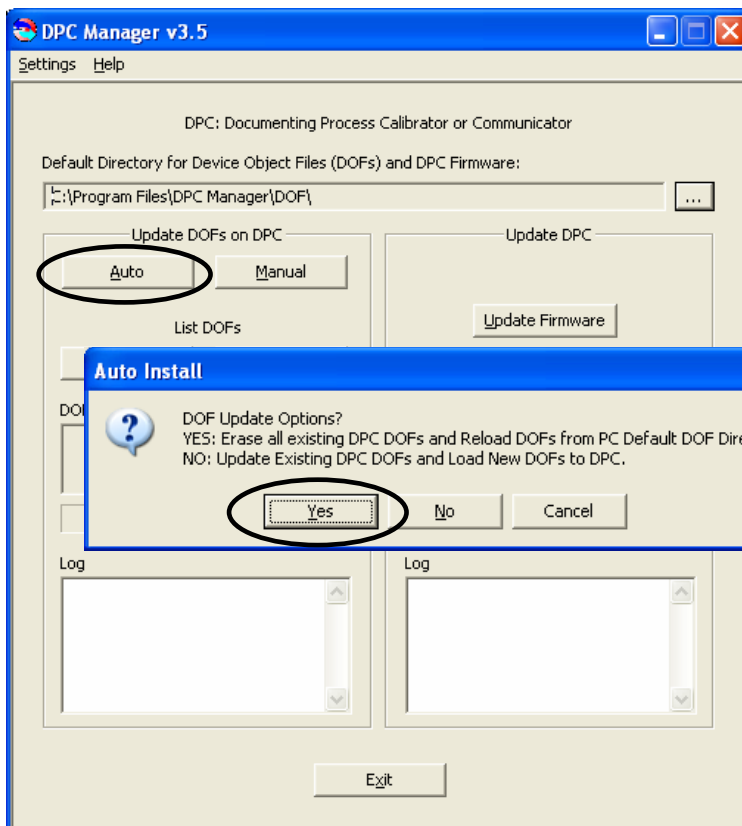
DOF flash memory will become fragmented after many DOF download sessions to add new or update existing DOFs. Fragmentation reduces the total number of DOFs that can be saved in memory. 600 DOFs is the nominal capacity of the flash memory). When fragmentation becomes extreme, the YHC will not accept additional DOF downloads. Periodic DOF memory maintenance will be needed to optimize DOF memory.

The Offline screen indicates the number of DOF files stored in memory and the percentage of free memory available for additional files. 401 DOFs ideally use about 72% of the available memory, so 28% of DOF memory should be free... The example at right indicates that only 20% of DOF memory is free. This indicates fragmentation.

To optimize DOF flash memory, it is necessary to delete all DOFs and then reload them all in one session. Connect the YHC to a host PC that has DPC Manager installed (see the DPC Manager Utility section of this manual for more information). Launch DPC Manager and select the “Manage DPC Device Driver and Firmware Updates” option. Go to the Tool Bar and click on “Settings”, then click on the “Advanced” option. The following screen will appear.

| Offline | | # | |
|-----------|------|--------------------|-----------|
| Utilities | | | |
| ➡ | 1 | List/Show DOFs | |
| | 2 | List/Edit Configs | |
| | 3 | Create Configs | |
| | 4 | Delete All Configs | |
| DOFs: | | 401 | Free: 20% |
| Configs: | | 3 | Free: 99% |
| Up | Down | Select | Back |

HART Offline Menu Screen



Under “Update DOFs on DPC” section on left side, click on the “Auto” button. An Auto Install dialog box will appear.

Select the “Yes” response to the “DOF Update Options?” question to erase all existing DOFs and re-load DOFs from the default DOF directory.

401 DOFs will take approximately 112 minutes to load.

Documenting HART Configurations with Yokogawa DMS Software


The documentation functions of the YHC 4100 provide additional functionality for use with the Yokogawa Device Management System (DMS) software. DMS is a database product for complete device management services including calibration documentation with the Yokogawa YPC 4000 Series of multifunction calibrators and HART configuration documentation with the YHC 4100. Complete device histories are maintained in the database. For HART devices these histories can include as-found and as-left HART configuration data to complete this important part of a device's history.

| Document | # | █ |
|-----------|--------------------|-------------|
| Utilities | | |
| 1 | Save/Send Configs | |
| 2 | List/Edit Configs | |
| 3 | Create Configs | |
| 4 | Delete All Configs | |
| DOFs: | 401 | Free: 20% |
| Configs: | 3 | Free: 99% |
| Up | Down | Select Back |

Document Key Menu Screen



YHC 4100 with Yokogawa Device Management System

The Document key  on the YHC 4100 models will save configurations in as-found or as-left categories as selected by the user. These configuration files can be uploaded later to DMS. When the **Save/Send Configs** menu option is selected the YHC automatically polls for an Online device for subsequent user selections.

DMS can also be used as a configuration repository ready to download stored device configurations for batch runs or changes in operating requirements. New configurations can be downloaded to YHC memory for later recall and use in the field.

YHC 4100 Device Specific & Generic HART® Communications

Yokogawa supports a large and growing number of Device Specific DOFs (Device Object Files). For a current listing of HART® devices with full Device Specific communication support, go to www.us.yokogawa.com/mi and select the YHC / YPC page. The list is found under “Available DOFs” link. Information found there can be sorted by clicking on the column headers (manufacturer name, model number, etc...).

To facilitate communication with HART devices that are not yet supported with Device Specific DOF files or that do not require DOF files, the YHC 4100 includes Generic HART Communication capability. This allows the user to communicate with any HART device using Universal and Common Practice commands to poll, configure, and maintain HART devices. Specific functions supported include most polling, tagging, device configuration and trim operations for analog outputs. Generic communications do not support Device Specific commands for higher order HART functions (see the **HART® Commands** section of this manual or the User's Manual for the HART device of interest for more information on the three command levels).

Using Generic HART Communication

The YHC 4100's Generic HART Communication mode starts automatically when HART communication is initiated with a device for which no Device Specific DOF (device object file) is stored in the handhelds flash memory. When this occurs, line two of the display will indicate “Generic” and the device tag number.

In general, the Generic HART mode operates similarly to its device specific DOF counterpart (see HART Communication section of this manual for more details). However, the YHC does not display Device Specific related communication menus or options when in the Generic communication mode. For example, the Zero and Sensor trim menu options (normally executed by Device Specific commands) are not displayed for pressure transmitters without DOF support. Please see the **Download Site** section of this manual for information on downloading the latest Device Specific DOF files to your YHC.

Updating the YHC 4100 Firmware and DOFs

Overview

Firmware upgrades and new DOFs can be downloaded via the Internet in either of two ways. The first way is to use the DPC Manager utility (shipped with each YHC or downloaded from the DOF Download Site) on a PC with Internet access to download files from the DOF Download Site automatically and then update the YHC. The second way is to use the DOF Download Site to download the needed files to the host PC and then use the DPC Manager utility to coordinate the update of the YHC. The Download Site enables users to stay current as new DOF's or revisions of existing ones are posted. Automatic email notices of new DOF postings are sent to all users who have logged on to the Download Site and registered their email address under "Subscriber Options." Firmware updates are free of charge. DOFs are available by subscription.

A list of currently available DOF's for HART device communication can be viewed at the <http://www.yokogawa.com/us/mi/MetersandInstruments/us-ykgw-yhcypc.htm>. Sort the list by clicking on any column header.

Who has access to the Download Site?

All YHC customers can purchase a subscription to the DOF Download Site. These customers may download any published file from the site to their host PC upon entry of the proper authenticating codes (shipped with unit). Contact Yokogawa at 770-254-0400 or Info@us.yokogawa.com for more information and to purchase subscriptions.

PC Requirements for Download Operations

Yokogawa recommends IBM compatible Pentium I PCs or higher for download operations. The PC should have an available RS-232 port, minimum modem speed of 28K and access to Internet service. USB ports can be used with USB to serial adapters as well.

Preparing the YHC

All YHC models come ready to connect to an IBM compatible PC using a standard DB-9 socket located at the bottom of the YHC enclosure. A six-foot male DB-9 to female DB-9 cable (P/N A90047-00052) is shipped with each handheld. Similar cables are acceptable. Connect the YHC to the PC and power up the YHC using fresh internal batteries or the optional AC Adapter (P/N 9B000007). The YHC is ready for download operations.

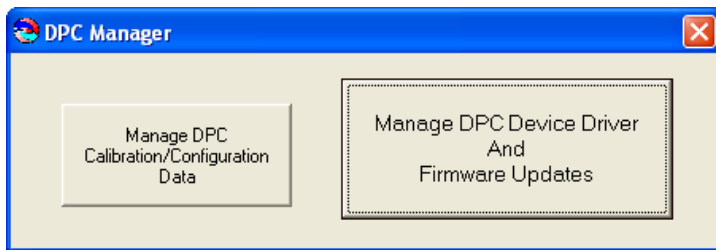
Using DPC Manager Utility to Update a YHC

DPC Manager Utility should be installed on the host PC from the User's Manual CD (included with YHC shipment) or from the DOF Download Site where it can be found at the bottom of the **File Download Area** page. DPC Manager coordinates the download operations from the DOF Download Site to the host PC and from the host PC to the YHC. Periodic improvements may be incorporated into this Utility. Therefore, Yokogawa recommends periodic comparison of the DPC Manager version installed on the host PC (see "Help" topic in Tool Bar and "About") to the latest available version listed on the Download Site to insure

use of the most up to date utility tool. Directions for using DPC Manager are found under the Help Tool Bar selection.

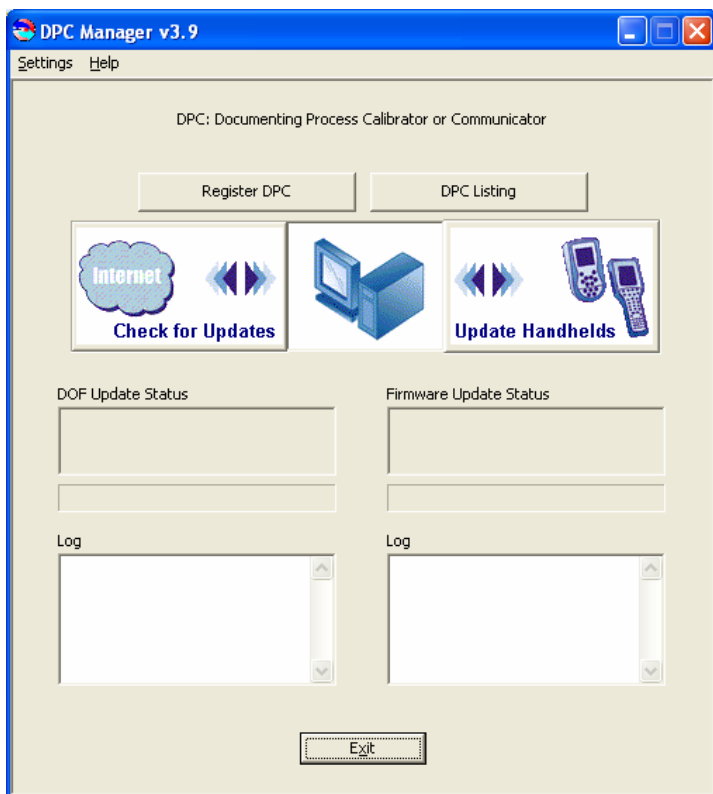
Prerequisites:

- A. DPC Manager is installed on a computer that has Internet access. DPC Manager software is shipped with each YHC on a CD.
- B. The correct PC COM port has been configured (see “Settings” topic in Tool Bar, then “Communications” and then “Port” to select COM port).
- C. A standard RS-232 Cable is connected to the YHC and the unit is turned on. Note: HART communication cannot occur while communicating using the RS-232 connection.
- D. It is highly recommended that the AC power adapter is used while performing any RS-232 communications.



1. Open the DPC Manager Utility and select the “Manage DPC Device Driver and Firmware Updates” button.

2. Click on “Settings” in the toolbar and make sure the “Advance Settings” option is unchecked.



3. Click the “Register DPC” button and the Model Number, Serial Number, Expiration Date and Firmware version of your YHC will be retrieved and registered.

4. Click on “Internet Check for Updates” button and DPC Manager will automatically download all firmware and DOF files to your computer. NOTE: Problems here may be due to firewall settings. See “Downloading from the DOF Download Site and Using DPC Manager to Update an YHC” section below for alternative approach.

5. Click on the “Update Handhelds” button and DPC Manager will automatically update your YHC from the computer. The latest firmware and DOFs will be downloaded from the computer to your handheld. First the YHC firmware will be updated (if needed), then the device object files (DOFs) will be updated.

6. The “DPC Listing” button provides a list of all YHC’s that have been registered with DPC Manager on the host computer.

Using the DOF Download Site Directly

Establish connection to the Download Site by going to the Yokogawa website www.us.yokogawa.com/mi. Click on the “Download Site” link on the home page navigation bar to access all download functions. The log in page of the Download Site requires the user to enter a valid User Name and Password to authenticate user identity and permit entry to the Site. These two codes are initially assigned by Yokogawa and can be found on a card included with shipment. Locate the card and place in a safe place for future reference.

The **Latest Release Notes** screen appears first listing and describing the firmware and DOF releases posted since the user’s last download session. Individual files can be downloaded by clicking on the desired hyperlink and then clicking on the hyperlinked file name that appears on the detailed description page of each DOF or firmware file. Also available on this screen are the navigation buttons for **Current Release Notes**, **File Download Area**, and **Subscriber Options**.

The **Current Release Notes** screen describes all DOF and firmware releases available and dates posted. Five (5) columns are shown on this page: Date, Title, Description, Manufacturer, Model. These categories will assist the user in finding the release descriptions of the DOF, DPC Manager or YHC Firmware releases of interest. Each column can be sorted to assist searches of the release database. Individual files can be downloaded from the detailed description page of each DOF or firmware file listed. Also available on this screen are the navigation buttons for **Latest Release Notes**, **File Download Area**, and **Subscriber Options**.

The **File Download Area** screen is the download page for bulk downloads. Select individual files for downloading from a list of downloadable files (including DPC Manager Utility, YHC Firmware, and DOF’s) by locating the file name of interest with the PC mouse and clicking on the corresponding selection box. All files can be marked for download by clicking on the “Check All Files” button. Start the download process by scrolling to the bottom of the page and clicking on the “Download Checked Files” button. Dialog boxes guide the user through the process. Also available on this screen are the navigation buttons for **Latest Release Notes**, **Current Release Notes**, and **Subscriber Options**.

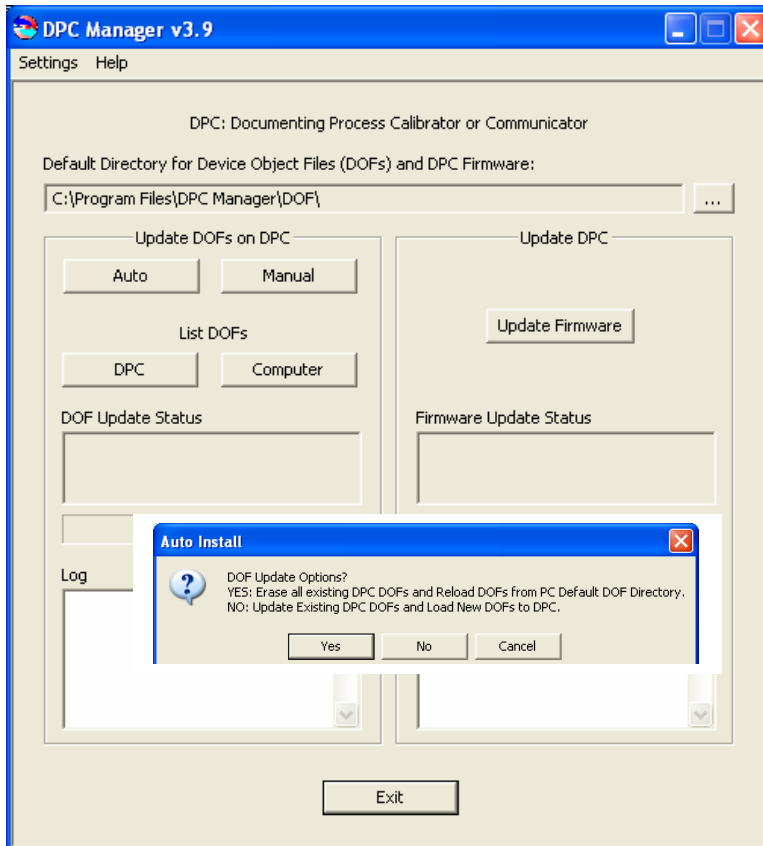
Subscriber Options

The **Subscriber Options** screen provides useful account information and is displayed immediately upon first log in. The user should provide contact information and e-mail address that allows Yokogawa to provide automatic notification of new firmware updates, DOF releases, and subscription period expiration. User Name and Password for the account are listed, as well as the subscription expiration date. In addition, this screen allows the user to change the account Password. Press the “Update Subscriber Options” button to save all **Subscriber Options** changes.

Downloading from the DOF Download Site and Using DPC Manager to Update a YHC

1. Establish connection to the DOF Download Site (described above) and go to the **File Download Area** for bulk downloads.
2. Select individual files for downloading from the list of downloadable files (including DPC Manager Utility, YHC Firmware, and DOF’s) by locating the file name(s) of interest with the PC mouse and clicking on the corresponding selection box(es). Alternatively, all files can be marked for download by clicking on the “Check All Files” button at the top of the page.
3. Start the download process by scrolling to the bottom of the page and clicking on the “Download Checked Files” button.

4. Follow the dialog boxes to save the downloaded file to a directory on the host PC. Remember the directory location.
5. Once the download is completed, open the file and use the unzip application to extract the individual files.
6. Open DPC Manager and select the “Manage DPC Device Driver and Firmware Updates” button.
7. Click on “Settings” in the toolbar and select “Advance Settings.”



8. Use the browser button to navigate to the location of the DOF files on the host PC.

9. Start a Firmware update by clicking on the “Update Firmware” button under the “Update DPC” header.

10. Start a DOF update by clicking on the “Auto” button under the “Update DOFs on DPC” header.

- a. Answer YES to erase all DOFs on the YHC and re-install all DOFs.
- b. Answer NO to add any new or revised DOFs to the existing YHC memory.

12. DPC Manager will provide updates as firmware or DOFs are being loaded.

To report any difficulties with downloading operations, please contact Yokogawa at 770-254-0400 or Info@us.yokogawa.com

RETURNING THE YHC FOR REPAIR

In the event that a YHC requires service and must be returned for repair, please contact Yokogawa at the numbers listed below.

DO NOT send any unit in for repair without first contacting Yokogawa for a Return Material Authorization (RMA) number. If this number has not been obtained and clearly marked on the package being shipped back, the unit will be returned at the shipper's expense. This number will be provided by the Yokogawa Repair Department when you call, fax or e-mail your information. An RMA number must accompany all incoming packages to insure proper tracking, processing and repair work.

To assist us in processing your repair request, please have the Model & Serial Number of the unit available when you call. This information is located on the YHC label. This information can also be obtained directly from the YHC display by pressing the **Cfg** soft key from the **YHC Main** display, then "5 Other" and then "1 Model Info". See the **YHC Main display** section in this manual for more details.

Yokogawa Corporation of America

2 Dart Rd.

Newnan, GA 30265

TELEPHONE: (770) 254-0400

FAX: (770) 254-2088

E-mail: info@us.yokogawa.com

Web Site: www.us.yokogawa.com/mi

APPENDIX

PRODUCT SPECIFICATIONS OVERVIEW

BASE UNIT: 10" L x 4.25" W x 1.65"D ABS plastic case with optional shock absorbing boot, 19ozs. including batteries

DISPLAY: 128 x 128 pixel graphic display, 2.6" x 2.6" viewable area, backlight

POWER: two (2) 9-volt alkaline batteries, two (2) 9-volt Lithium batteries, two (2) 9-volt NiMH batteries or optional 100 – 240 Vac power adapter (P/N A36742)

TEMPERATURE SPECIFICATIONS:

Storage: -40° F to 140° F (-40° C to 60° C)

Operating: 23° F to 122° F (-5° C to 50° C)

CONNECTIONS: HART: Standard banana jacks (3/4" center)
PC Data transfer: DB-9 serial connector
Power: AC Adapter jack

AUTO SHUT-OFF - occurs after user-selected period of keypad inactivity or can be disabled, both YHC and backlight

DIAGNOSTICS – YHC 4100 self-tests upon power up. Advisories are posted on the display.

APPROVALS: Class I, Div I, Groups A, B, C, D, T5 certified by MET Laboratories, Inc per UL3111-1, CAN/CSA-22.2 No. 1010.1 & 157-92 and UL913, Fifth Edition, Rev. 2/21/97

CONTRAST – direct adjustment of display contrast in any mode; automatic compensation for ambient temperature changes

SECURITY LOCKOUT – YHC 4100 Settings can be locked out entirely or by specific feature.

CE CE compliance

MEMORY – separate, dedicated, non-volatile flash memory for YHC firmware, DOFs, and Configurations

DOF Memory: 600 HART devices (based on average DOF size)

Configuration Memory: 200 HART devices (based on average configuration size)

YHC MODELS, OPTIONS, ORDERING INFORMATION

| | | | | | | | |
|-------------------|--|--|------------------|-------------------------|-----------------------|---------------------|---|
| YHC 4100 | HART® Communicator (Includes CE Mark, HART leads Kit, Batteries, RS-232 Serial Cable, User's Manual, Universal Power Adapter, protective boot) | | | | | | |
| | Code | Reserved | | | | | |
| | -01 | Always -01 | | | | | |
| | Code | Documenting Options | | | | | |
| | -0 | No documenting (configuration save/send is supported with memory for 200 configs) | | | | | |
| | -1 | Standard documenting (as-found & as-left, requires DMS database software sold separately) | | | | | |
| | -2 | 21CFR Part 11 documenting for FDA electronic signature compliance (as-found & as left, requires DMS database software sold separately) | | | | | |
| | Code | Certification Options | | | | | |
| | -00 | CE Mark (Standard on all units) | | | | | |
| | -01 | CE Mark, Intrinsically Safe unit by MET Laboratories. MET Laboratories is a Nationally Recognized Test Lab (NRTL). This unit is certified by MET Laboratories to comply with standards CSA C22.2 No. 1010.1-92, C22.2 No. 157, and UL913, Fifth Edition Rev. 2/21/97 for Class I, Div I, Groups A, B, C and D | | | | | |
| | Code | Carrying Case and Strap Options | | | | | |
| | -0 | Rear Hand Strap (Standard on all units) | | | | | |
| | -2 | Fitted, use-in-place, soft carrying case with adj shoulder strap & pocket for HART leads | | | | | |
| | -4 | Larger soft carrying case with adjustable shoulder strap & pocket for HART leads (A37230) | | | | | |
| | -5 | Larger soft carrying case (w/ adj shoulder strap & pocket for HART leads) + YHC hanging strap | | | | | |
| | Code | User's Manual Language options | | | | | |
| | -01 | English language | | | | | |
| | -02 | German language (Pending) | | | | | |
| | -03 | French language (Pending) | | | | | |
| | -04 | Spanish language (Pending) | | | | | |
| | -05 | Chinese (Standard) language (Pending) | | | | | |
| | -06 | Italian language (Pending) | | | | | |
| | -07 | Japanese language (Pending) | | | | | |
| | Code | Download Subscription (DLS) Fee options | | | | | |
| | -0 | No DownLoad Subscription (DLS) | | | | | |
| | -1 | Standard 3-year DOF Download Subscription | | | | | |
| YHC 4100 | -01 | -1 | -01 | -2 | -01 | -0 | Full Model ID: YHC 4100-01-1-01-2-01-0 |
| Hart Communicator | Always | Standard Documenting | Intrinsic Safety | Fitted U.I.P. Soft case | English User's Manual | Standard 3 Year DLS | Note: Only YHC 4100-01-1-01 portion of the model number is tracked by DPC Manger and DMS Software |

YHC ACCESSORIES LIST

- A37049 Protective boot provides degree of protection against drop related damage; slip on
- A900529-00014 HART Test Lead Kit (inc'd w/ YHC) - std banana plugs, mini-grabbers, 250 Ω resistor
- A36821 Std size 250 Ω shunt resistor (inc'd w/ YHC) - req'd for HART low resistance loops
- A900447-00052 DB-9 cable, Male x Female, 6 ft length (incl'd w/YHC);
Required for updates / communication
- A36875 YHC carrying case (inc'd w/ YHC) - custom soft case with adjustable shoulder strap and HART lead compartment
- A36937 Adjustable, detachable hanging strap (inc'd w/ YHC) clips directly to YHC attach points
- A900614-00006 9 Volt Alkaline Battery (inc'd w/ YHC) (2 req'd)
- A900614-00009 9 Volt Lithium Battery (2 req'd), approx 3x life of alkaline batteries, best for cold service
- A900614-00015 9 Volt NiMH Batteries (2 req'd)

YHC ACCESSORIES LIST, con't

A37134 NiMH battery charger, 100 – 240 vac, 50/60 Hz, universal plug kit
9B000007 Power adapter, 100 Vac to 240 Vac, 50-60 Hz universal plug kit (incl'd w/ YHC)
F/N YHC 4100:440 Paper instructions for YHC 4100 (PDF instructions sent with each YHC on CD)

Intrinsic Safety Document – Uncontrolled

For Controlled document see drawing shipped with actual handheld

NON-HAZARDOUS
LOCATION

YHC4100-01-X-01 SERIES HART COMMUNICATOR

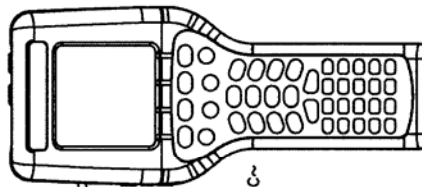
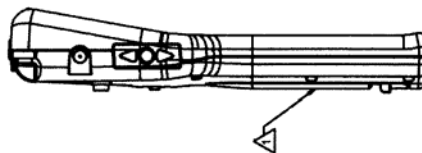
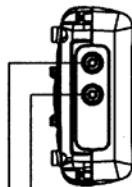
HAZARDOUS
LOCATION

- ⚠ Batteries: (2) 9VDC === Alkaline or NiMH, battery replacement (removal/installation), shall only be performed in a non-hazardous area. Do not mix new with used batteries or of different type of manufacturers.
- ⚠ AC/DC adapter may be used, (Meriam P/N 980000007)
- ⚠ RS232 port may be used.

4. Max power dissipation is 1.35W MAX. (DOF downloading), 0.5W MAX. normal use. Input Voltage 9VDC ===

30 VDC === Max.
Hart Comm.

Hart Terminals:



⚠ 110-240 VAC~
50/60 HZ.

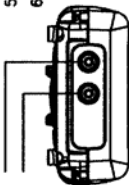
⚠ RS232 Comm.
to PC

Intrinsically Safe / 'Securite' Intrinsic que Class I; Div 1; Groups A, B, C, D; T5 Exia

- 1. Substituting of Components may impact Intrinsic Safety.

LA SUBSTITUTION DE COMPOSANTS PEUT COMPROMETTRE LA SECURITE INTRINSEQUE;

- 3. RS232 comm. port must not be used.
- 4. AC/DC Adapter must not be used.
- 5. Pimax (Hazardous Location Use) = 0.5W MAX.
- 6. Consult Manual for additional information regarding Hazardous location use.

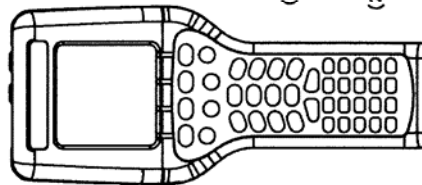
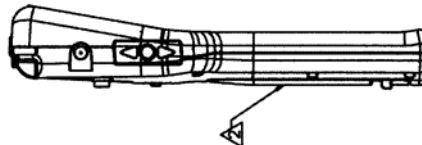


Hart Terminals:

Connect to Certified Intrinsically Safe circuit only for Hart Comm. Vmax= 30VDC === Imax= 100mA Ci= 1.24uF Li= 0

Note: Capacitance and inductance values connected to the intrinsically safe circuit are not to exceed the values specified by the entity parameters.

- 7. Do not replace, remove or install batteries or mix new with used batteries or of different type or manufacture. NE PAS REMPLACER, ENLEVER OU INSTALLER DES BATTERIES, NI MELANGER, NI RETIRER, NI INSERER DES BATTERIES D'UN TYPE OU DE FABRICANT DIFFERENT.



⚠ To prevent ignition of hazardous atmospheres, batteries must only be changed in an area known to be non-hazardous.

AFIN DE PREVENIR L'INFLAMMATION D'ATMOSPHERE DANGEREUSE, NE CHANGER LES BATTERIES QUE DANS DES EMPLEMENTS DE SIGNED NON DANGEREUX.

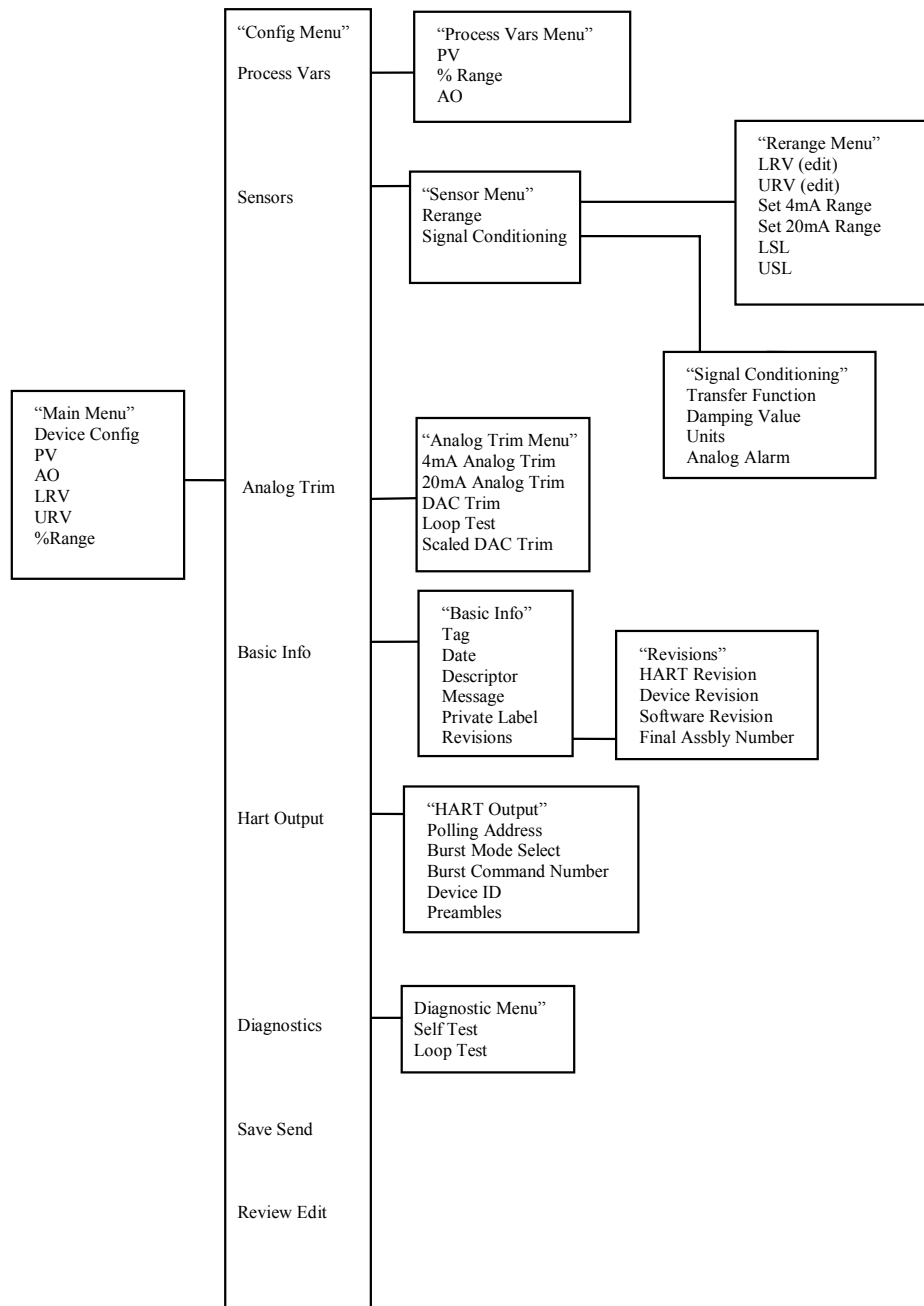
Batteries approved for intrinsic safe location use are:

(2)9VDC ===
Alkaline (A900814-00008);
Duracell, FC1604 (6LR61);
Duracell, MN1604 (6LR61);
Varta, 4922, 9.0V, 550mAh

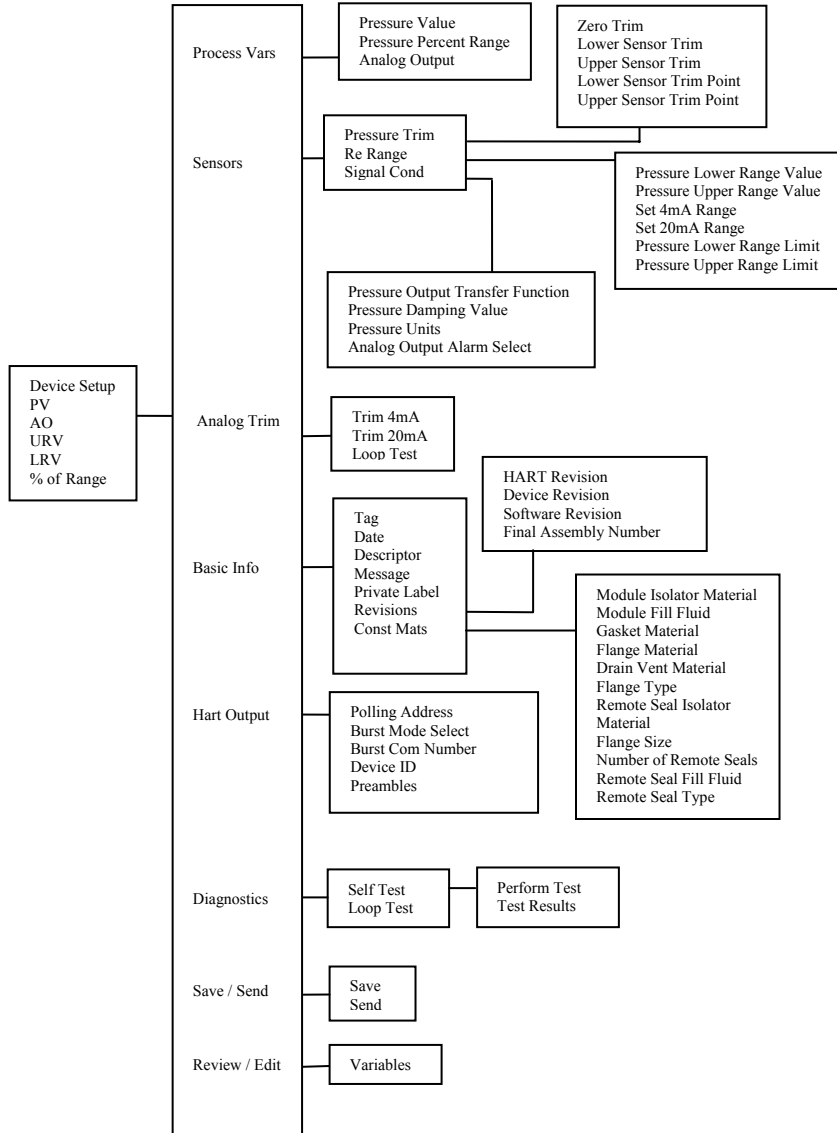
(2)9VDC ===
NiMH (A900814-00015);
Ansmann, 503033J, 8.4V, 250mAh
Varta, 5622 or V7784, 8.4V, 150mAh
Unifolite Batteries, U9L, 9.0V, 1200mAh

YHC4100-01-X-01 Series Intrinsic Safety Control Drawing

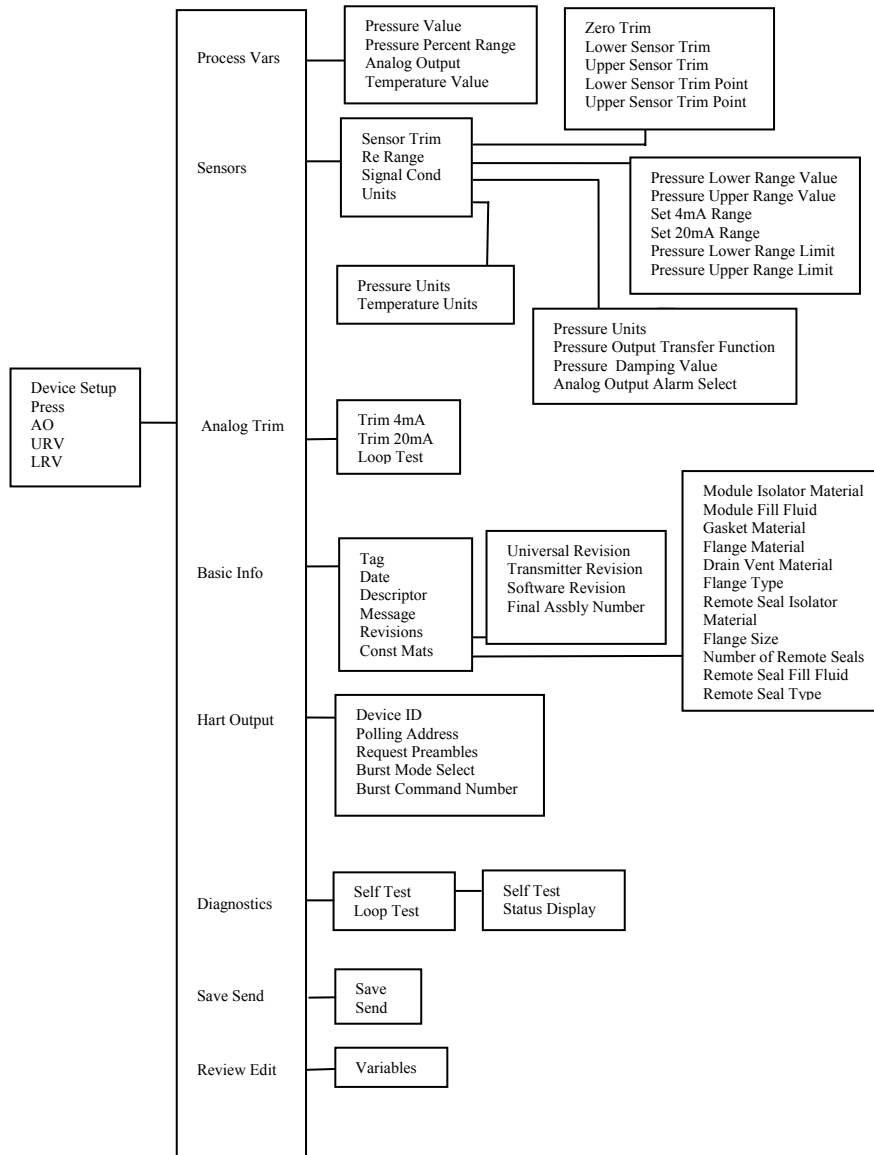
Generic DOF (HART 5 devices)



1151 Rev. 5 Menu Tree



3051C Rev. 2 Menu Tree



EJA Rev. 2 Menu Tree

