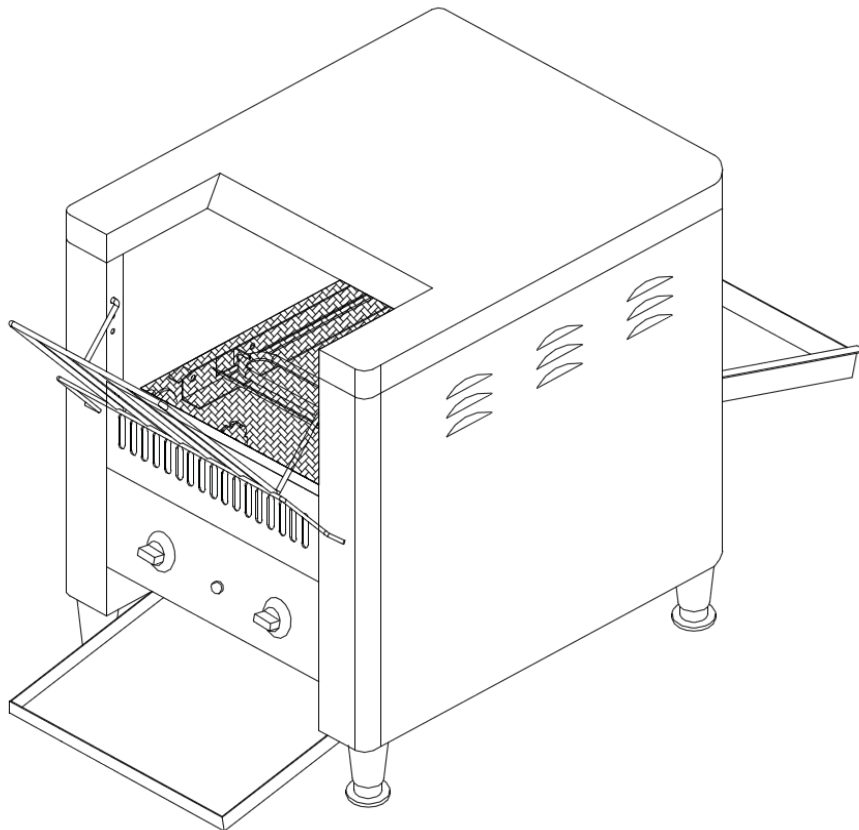




ELECTRIC COUNTER TOP CONVEYOR TOASTER



OPERATION MANUAL

Contents

Introduction	3
Packaging	3
Installation	4
Operation	5
Cleaning, Care and Maintenance	6
Safety	6
Trouble Shooting	7
Explosion View	8
Spare Part List	9
Circuit Diagram	10
Compliance	11
Specification	11
Contact Details	12

Introduction

Congratulations on the purchase of your Birko machine. Please take time to carefully read through this manual to ensure the machine is operated and maintained properly, to ensure the best possible performance from the product for many years.

Birko will not accept liability for the following if:

- *The instructions in this manual have not been followed correctly.
- *Non-authorized personnel have tampered with the machine.
- *Non-original spare parts are used.
- *The machine has not been handled and cleaned correctly.
- *There is any use damage to the unit.

Packaging

Birko prides itself on quality and service, ensuring that at the time of packing, all products are supplied fully functional and free of damage.

Provided in this package are the following:

- Conveyor Toaster
- Return Chute
- Pass through Chute
- Feeder
- Crumb Tray
- Feet x 4
- Manual

Should you find any damage as a result of freight, please contact your Birko dealer immediately.

Installation

Remove the Birko Conveyor Toaster from the packaging; be certain that all protective plastics and residues are thoroughly cleaned from its surface.

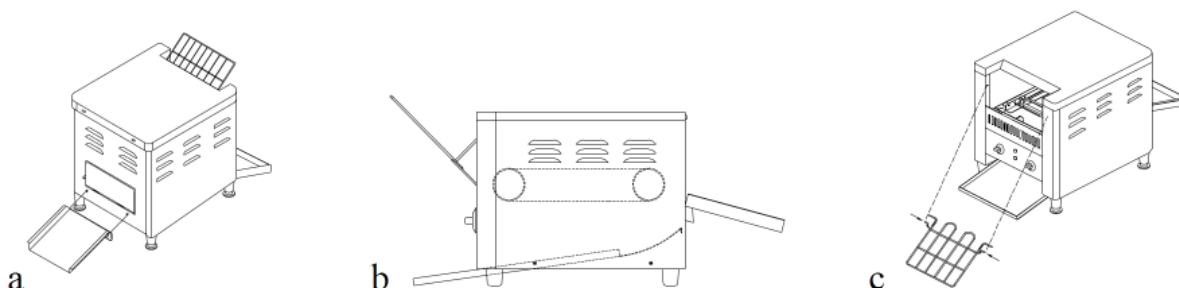
Locate the Birko Conveyor Toaster on a firm level surface.

International standards and regulations should be consulted in order to abide by standards set in relation to positioning, spacing and ventilation of the product.

Once the Conveyor Toaster has been placed in position ensure the crumb tray is correctly fitted in place, at the front of the toaster.

Supply the appropriate power and connect to mains. The toaster is now ready to turn on and operate.

Your Conveyor Toaster can operate as a pass through operation or return operation. Please see diagrams below and follow the instruction for appropriate/required method.



Refer to relevant instruction below for the diagrams provided.

Pass through

a. Open the back door by fixing it into a horizontal position (close to the conveyor). Then attach the rear chute to the hanging screws provided at the back of the toaster.

Return Operation

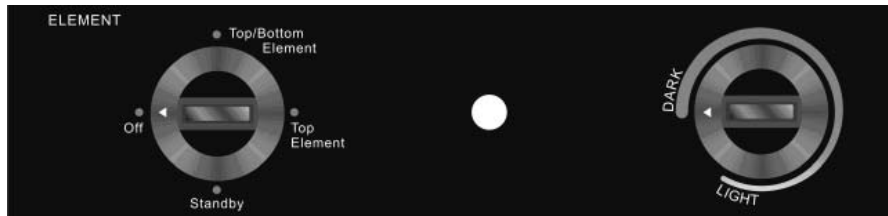
b. Ensure the back door is closed by fixing it into a vertical position. Working from the front, take the lower return chute, slide it into the bottom of the conveyor toaster and fix it on the two pins located at the inside rear of the toaster.

Feeder

c. Place the feeder into position as per the diagram provided.

Operation

The Toaster has 3 functions which are controlled by the dial on the left of the unit. See below for diagram and listed functions.



Settings:

- Top + Bottom Element: Provides Full power to Upper and Lower elements
- Top Element: Provides full power to the upper element only
- Standby: Reduces power to unit, to save energy whilst not in use. (Which allows the unit to keep warm, for faster heat up when required).

By using the right hand dial you are able to control the speed of the conveyor. Which in turn determines the darkness/lightness of your toasted products.

- Adjusting the speed control in a clockwise direction will increase the speed in turn resulting in lighter toasted products.
- Adjusting the speed control in a anti-clockwise direction will slow the conveyor speed in turn resulting in darker toasted products

*Note: When in operation, the Conveyor Toaster will be hot; at the entrance to the conveyor cavity. Please take extreme caution.

Cleaning, Care and Maintenance

Switch off the power and disconnect from the mains. The Conveyor Toaster should be cleaned after each day's operation, however may require to be cleaned more often depending on the amount of use.

Allow the Conveyor Toaster to cool before cleaning. Remove the crumb tray, toast chutes, and feeder to wash in warm soapy water. Ensure each part is thoroughly dry before returning to the unit.

The remainder of the Conveyor Toaster can be cleaned with a damp cloth using hot, soapy water.

Do not immerse completely in water or use water jets to clean. Warm soapy water is recommended for cleaning, cleaning agents after prolonged use can damage stainless steel.

Safety

Switch off power to and disconnect from the mains whilst cleaning.

Do not locate in an area that may be cleaned by a water jet. Do not use metal utensils to remove bread or crumbs from the toaster.

If the power cord is damaged, it must be replaced by a Birko Service agent or Recommended Qualified Technician in order to avoid a hazard.

The Birko Conveyor Toaster does not contain any user-serviceable parts. Birko Foodservice dealers or Recommended Qualified Technicians should carry out repairs if necessary. Do not remove any components or service panels on this product.

Birko takes every care to ensure that all products are safe. Steel cutting procedures used to manufacture these items results in sharp edges. These sharp edges are removed to the best of our ability, however we insist the operator takes care when in contact with this piece of equipment.

Allow the Conveyor Toaster to cool down after use before dismantling for cleaning; the unit will still be too hot to handle immediately after use.

This appliance is not intended for use by persons (Including Children) with reduced physical, sensory or mental capabilities, or lack of experience and knowledge, unless they have been given supervision or instruction concerning use of the appliance by a person responsible for their safety.

Children should be supervised to ensure they do not play with the appliance.

Trouble Shooting

If your Birko Conveyor Toaster does not operate, please check the following before placing a service call.

Problem	Cause	Remedy
Slow heat up	a. if the switch is:1” b. up element cut off c. down element cut off	a. set the switch”1” b. change up element c. change down element
No heat up	a. switch is closed or broken b. is the civil-used power supplied c. up and down element all cut off	a. open or change the switch b. supply civil-used power c. change element
Indicate light is not on	a. indicator light is broken; b. switch closed or broken	a. change indicator light b. open or change switch
The carry chain does not work	a. switch closed or broken b. timing switch cut off c. no civil-used power d. elector-motor broken e. the fan leafage and elector-motor are broken f. carry chain broken or loosen g. drive gear and chain wheel damaged seriously or broken	a. open or change switch b. change timing switch c. supply civil-used power d. change elector-motor e. change the fan leafage and elector-motor f. fix the nut or change the chain g. change drive gear and chain wheel.

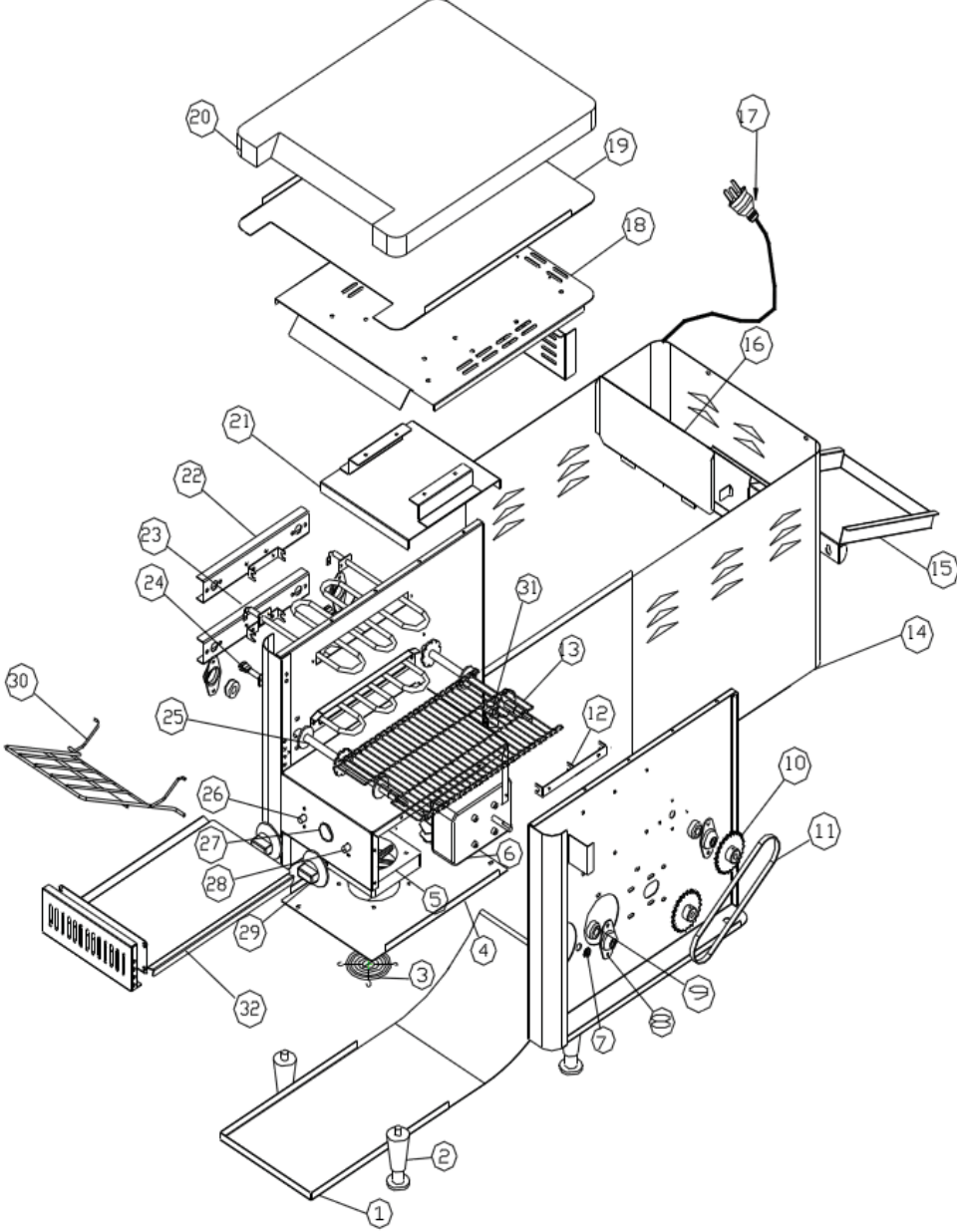
Note all Birko products are tested prior to packaging.

Before calling a service agent or qualified technician:

- Check there is correct power supply.
- The machine is plugged in correctly and power is switched on.

Explosion View

Model: 1003202



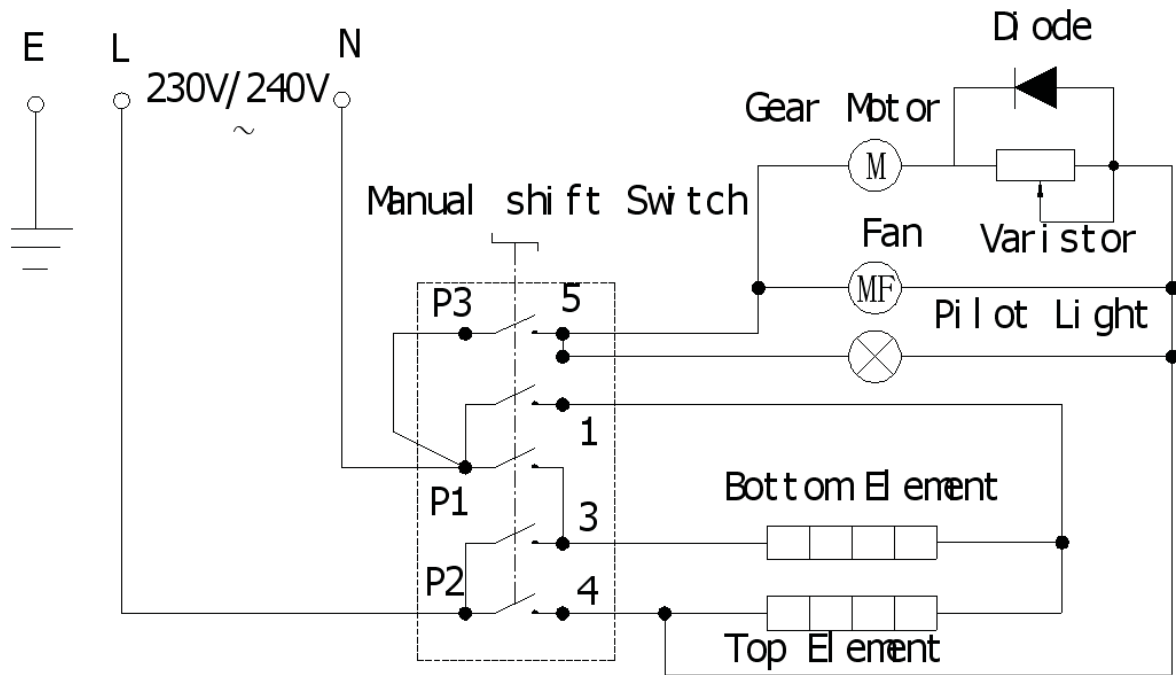
Spare Parts List

Model: 1003202

No	DESCRIPTION	QTY	CODE
1	Return Chute	1	
2	Feet	4	
3	Fan cover	1	
4	Base plate	1	
5	Fan	1	1310617
6	Motor	1	1310616
7	Nosing	2	
8	Shaft bracket	4	
9	Shaft cover	4	
10	Gear Wheel	2	
11	Chain	1	
12	Element fixing plate	4	
13	Conveyor belt	1	
14	Main body	1	
15	Pass through chute	1	
16	Back door chute	1	
17	Plug & lead	1	1315010
18	Top panel	1	
19	Inner insulation baffle	1	
20	Top cover	1	
21	Element cover	1	
22	Element assembly plate	2	
23	Upper element	1	1310624
24	Lower element	1	1310623
25	Conveyor driving shaft	2	
26	Multi function control switch	1	1310625
27	Indicator light	1	1310621
28	Variable speed controller assy.	1	1310622
29	Dial	2	1315186
30	Feeder	1	
31	Bushing	1	
32	Crumb tray	1	

Circuit Diagram

Model: 1003202



The above circuit diagram has been provided to assist qualified technicians. Only Birko agents or Recommended Qualified Technicians should carry out repairs if needed. Do not remove any components or service panels on this product.

Compliance

Birko products have undergone strict product testing in order to comply with regulatory standards and specifications set by international independent, commonwealth and federal authorities.

As testimony to such compliance Birko products carry the following marks/symbols:



Specifications

MODEL	VOLTAGE	POWER	DIMENSIONS(MM)		
			WIDTH	DEPTH	HEIGHT
1003202	230V	2400W	370	420	410
	240V	2600W			

Please keep this manual in a safe place for future use!

Contact Details

Birko Heaters Australia Pty Ltd.,

ABN 39 103 881 625

67 Allingham St

Condell Park

N.S.W. 2200

AUSTRALIA

Local Ph: 1300 724 955

Local Fax: 1300 735 259

sales@birkoheaters.com

www.birkoheaters.com

The term 'Birko' is a registered trade mark of Birko Heaters Australia Pty Ltd.

Zenith Heaters Limited, IRD No. 95 640 729

Unit 2/15 Moselle Avenue, Henderson.

Auckland. 0610

NEW ZEALAND.

Telephone: 0800 558055

Facsimile: 0800 559055

www.zenithheaters.co.nz

Please keep this manual in a safe place for future use!

