



Kernel for Outlook Express

“Recover Emails from
Corrupt or Damaged DBX Files”

PRODUCT GUIDE

Table of Contents

1.	Introduction to Kernel for Outlook Express.....	3
1.1	Using this Manual	4
1.2	About Kernel for Outlook Express	5
1.3	Salient Features	6
1.4	Who Should Use this Software?	6
2.	Getting Started	7
2.1	Installation Pre-requisites.....	7
2.2	Downloading Kernel for Outlook Express for the First Time	8
2.3	Install Kernel for Outlook Express	8
2.4	Start Kernel for Outlook Express.....	8
2.5	Uninstall Kernel for Outlook Express.....	8
3.	Software Interface	10
3.1	Menu-bar.....	10
3.2	Tool-bar.....	11
4.	Repairing .DBX Files.....	12
5.	Saving Repaired .DBX Files	15
5.1	Save as DBX	15
5.2	Save as EML	18
6.	Full Version	20
6.1	Requirement of Full Version.....	20
6.2	Purchasing Full Version.....	20
7.	Support.....	21
8.	Troubleshooting	22
8.1	Common Issues	22
8.2	Frequently Asked Questions	22
9.	Legal Notices	23
9.1	Copyright	23
9.2	Trademark	23
9.3	Disclaimer	23

9.4 License Agreement 23

Table of Figures

Figure 3.1: File Menu 10

Figure 3.2: Help Menu 10

Figure 4.1: Main Window 12

Figure 4.2: Recovered Emails 13

Figure 4.3: Saving Options Window 14

Figure 5.1 Saving Option 16

Figure 5.2: Select Folder 17

Figure 5.3: Saving Process 18

Figure 5.4 Saving Option- Save as EML 18

Figure 5.5: “Browse for Folder” Window 19

Figure 5.6: Saving Process 19

1. Introduction to Kernel for Outlook Express

Welcome to the user manual of Kernel for Outlook Express, the most effective and powerful file repair software that helps to recover emails from corrupted and damaged dbx files. This user manual will help you with the step by step guidelines to use Kernel for Outlook Express software.

1.1 Using this Manual

This user manual provides you with the complete understanding of the software usage and its capabilities. First time users are advised to read this user manual completely and carefully to gain the full understanding of the software before starting with the actual repair procedure with Kernel for Outlook Express.

Beginners should read the user manual completely while an experienced user can use the Table of Contents to find out the information pertaining to the tasks that you need to perform with Kernel for Outlook Express.

The table of contents helps you to navigate to different sections of the user manual. The table of contents lists all the sections that are contained in this user manual in chronological order. The user manual comprises the following sections:

- Introduction
- Getting Started
- Software Interface
- Repairing .DBX Files
- Saving Repaired .DBX Files
- Full Version
- Support
- Troubleshooting
- Legal Notices

Certain abbreviations have been used throughout this manual. For clear understanding of the contents of this user manual, please go through the list of abbreviations, mentioned below, before reading the manual.

1.1.1 List of Abbreviations

DBX: File extension for Outlook Express files

RAM: Random Access Memory

MB: Mega-Byte

GB: Giga-Byte

MS: Microsoft

1.2 About Kernel for Outlook Express

Kernel for Outlook Express is a result oriented and powerful DBX file repair software to recover emails from the corrupt, damaged, inaccessible .DBX files of MS Outlook Express. It successfully recovers emails which have become inaccessible due to file corruption or have been deleted permanently from the mailbox.

This software effectively repairs the dbx files of the user profile which is/are configured in Outlook Express email client or any other dbx files which are provided by the user for repairing and recovery process.

It performs powerful and thorough scanning of the corrupt dbx file to cover up all the cases which could lead to corruption of your dbx files. This software makes the emails accessible again which become inaccessible due to corruption in dbx file header, virus infection, media corruption, accidental deletion etc.

You might be familiar with the following error messages while trying to open corrupt dbx files of Outlook Express.

- MSIMN caused an invalid page fault in module Msoe.dll
- MSIMN caused an invalid page fault in module Msoe.dll at address
- Outlook Express could not be started. It may not be installed correctly. Make sure that your disk is not full or that you are not out of memory. Contact Microsoft support for further assistance. (0x800c012e)
- Outlook Express could not be started because Msoe.dll could not be initialized. Outlook Express may not be installed correctly.
- MSIMN caused an exception C0000006h in module Directdb.dll The message could not be sent. There is not enough Disk space.
- Unknown error has occurred. Protocol: SMTP Port: 0 Secure: No [SSL] Error: 0x800c0131

Kernel for Outlook Express quickly resolves the above listed errors by repairing corrupt .DBX files keeping the email format intact. It successfully restores email formatting, email properties (to, from, bcc, date/time), email data, attachments, embedded images, background images and all other email objects of the corrupt .DBX file.

Kernel for Outlook Express provides complete and accurate recovery of email components, which ensures that the attachments and email properties are associated with the correct email message.

It is embedded with two saving options: **Save in .DBX** and **Save in .EML**, which facilitates its user to save the recovered emails in any of the available format.

1.3 Salient Features

Salient features of Kernel for Outlook Express - email recovery software includes:

- Interactive Graphical User Interface
- Powerful email recovery engine
- Powerful file repair engine
- Support to Unicode language recovery
- Recovers emails from Outlook Express 5.0, 5.5 and 6.0 .DBX files
- Recovers emails which have been deleted from the 'Deleted Items' folder
- Different saving options to filter the recovered email messages
- Two saving formats (.dbx or .eml) to save the recovered email messages
- Facilitates to select and unselect recovered emails from the preview pane
- Free demo to analyze capabilities of the tool before purchasing it

1.4 Who Should Use this Software?

It is designed for people, who rely on Outlook Express, a simple and user friendly email client for their email communication. The efficiency and capability of Kernel for Outlook Express software to repair heavily corrupted and damaged files within minutes makes it the best choice for professionals and administrators.

This software is useful for home users, professionals, college users or any other user who were not able to perform receiving/sending of emails and also unable to access emails stored in dbx files due to dbx file corruption. This corruption could have been caused due to virus attacks, improper system shutdown, media corruption where the dbx files are stored, installation of unsupported software, etc.

2. Getting Started

Now that you have understood the features and usefulness of Kernel for Outlook Express, you are ready to get hands on experience with the usage of the software. To start repairing dbx files, you will first need to download and install the software.

It is strongly recommended that before installing Kernel for Outlook Express, you should go through the installation pre-requisites of the software to ensure that your computer is meeting all the requirements required to run the software.


2.1 Installation Pre-requisites

The various pre-requisites for installing and running Kernel for Outlook Express can be broadly classified into two major categories – Hardware requirements and Software requirements.

2.1.1 Hardware Requirements:

The hardware requirements for installing the software are as follows:

- Pentium Class Processor
- Minimum 64MB RAM (128 MB recommended)
- 10MB for Software installation
- Disk Space - Enough space to store the repaired files

 You should have at-least 10 MB of free disk space if you want to repair and save a 10 MB .DBX file.

2.1.2 Software Requirements:

The software requirements for installing the software can further be grouped into two categories– Operating system requirements and Outlook Express version requirements. The requirements are as follows:

2.1.2.1 Operating System Requirements

Supported Operating Systems:

- Windows Vista
- Windows 2003
- Windows 2000
- Windows XP

2.1.2.2 Outlook Express Version Requirements

Supported Outlook Express versions:


- Version 5.0, 5.5, 6.0

2.2 Downloading Kernel for Outlook Express for the First Time

After checking your computer with the prescribed system requirements for Kernel for Outlook Express, you can download and install the software on your computer. You can buy the full version of the software from any one of our authorized resellers– Element5, Asknet and 2CO.

If you want to try using Kernel for Outlook Express before buying it, you can download the evaluation version from the following link:

<http://www.nucleustechologies.com/Download-Outlook-Express-Mails-Recovery-Software.php>

 You can repair dbx files of the user profile configured on your system or dbx files saved on your computer system by using evaluation version of Kernel for Outlook Express; however, the evaluation version recovers all the email messages existing in the dbx files but will save only 10 emails from each folder of the repaired file. To save all the emails, full version needs to be purchased.

2.3 Install Kernel for Outlook Express

After downloading the installer file for Kernel for Outlook Express, you can install the software by running the file.

To install Kernel for Outlook Express:

1. Double-click the Kernel for Outlook Express installer.
2. Follow the on-screen instructions.

The **Setup Installation Complete** screen will be displayed

3. Click **Finish** to launch the software.

2.4 Start Kernel for Outlook Express

To start Kernel for Outlook Express:

Click the **Start → All Programs → Kernel for Outlook Express**

Alternatively, you can launch Kernel for Outlook Express by double-clicking the shortcut icon available on the Desktop and Quick Launch icon.

2.5 Uninstall Kernel for Outlook Express




You may need to uninstall and re-install Kernel for Outlook Express. To uninstall Kernel for Outlook Express:

1. Click the **Start → All Programs → Kernel for Outlook Express → Uninstall Kernel for Outlook Express**

A warning message will be displayed.

2. Click '**Yes**' to uninstall Kernel for Outlook Express.

 Before proceeding to uninstall Kernel for Outlook Express, you must ensure that the software is not running in system background.

You can alternatively uninstall Kernel for Outlook Express from the **Control Panel** by performing the following steps:

1. Click the **Start Menu → Control Panel** and then double click the **Add or Remove Programs** icon.
2. Select **Kernel for Outlook Express** and click **Remove**.

A warning message will be displayed.

3. Click '**Yes**' to uninstall Kernel for Outlook Express.

3. Software Interface

Now that Kernel for Outlook Express has been installed on your computer, you can start using the software after getting acquainted with the software interface.

3.1 Menu-bar

The menu-bar of Kernel for Outlook Express comprises two main menus – File and Help.

3.1.1 File Menu

The **File** menu comprises three menu items.

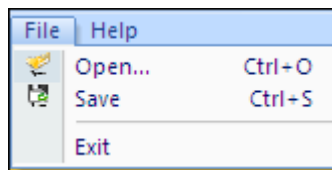


Figure 3.1: File Menu

Menu items in the **File** menu:

Field Name	Field Description
Open	Select to browse and list corrupt .DBX files stored on your hard disk
Save	Select to get the Saving Options window to save the recovered email items
Exit	Select to close the software

3.1.2 Help Menu

The **Help** menu comprises three menu items.

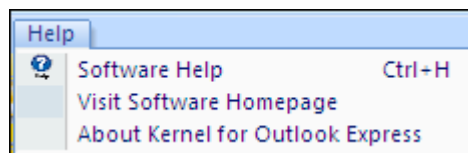







Figure 3.2: Help Menu

Menu items in the **Help** menu:

Field Name	Field Description
Software Help	Select to view Users Help Manual of Kernel for Outlook Express
Visit Software Homepage	Select to visit software homepage
About Kernel for Outlook Express	Select to view version-related and support information of Kernel for Outlook Express

3.2 Tool-bar

The tool-bar in Kernel for Outlook Express is displayed below the menu-bar. The tool-bar provides a convenient and user-friendly method to perform certain actions that can also be performed by using the menu-bar. Read the information in the table below to find out about the tool-bar buttons:

Button	Button Name	Button Description
	Open	Click to launch the "Open" window to select .DBX file from your disk drive for email recovery
	Save	Click to save the recovered email items from selected .DBX file(s)
	Select All	Click to select all items of the selected file
	Unselect All	Click to unselect all items of the selected file
	Help	Click to view User's Help Manual of Kernel for Outlook Express

4. Repairing .DBX Files

Now that you have complete familiarity of the user interface of Kernel for Outlook Express, you are ready to repair .dbx files.

To repair .dbx files:

1. Launch Kernel for Outlook Express. By default, software opens up the "Open" window to browse for .DBX file.

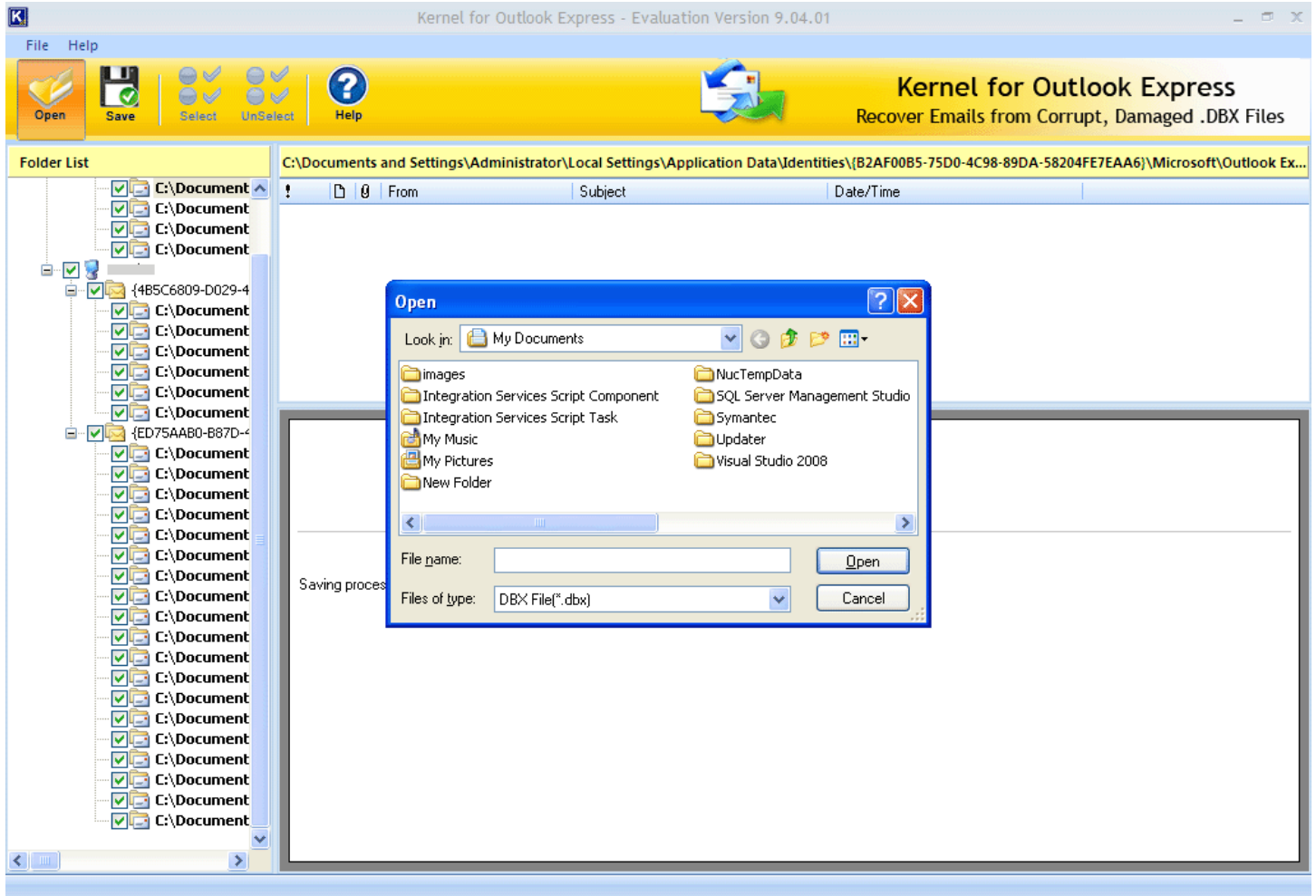



Figure 4.1: Main Window

 Kernel for Outlook Express displays the default user profile's dbx files which is/are configured and listed in Outlook Express.

2. Browse and list the .DBX file from your disk or select the default listed DBX files from left-hand pane to view preview of the respective items.

3. Select the folder from which you want to recover email items, software will scan that folder and will display recovered items in tree like structure.

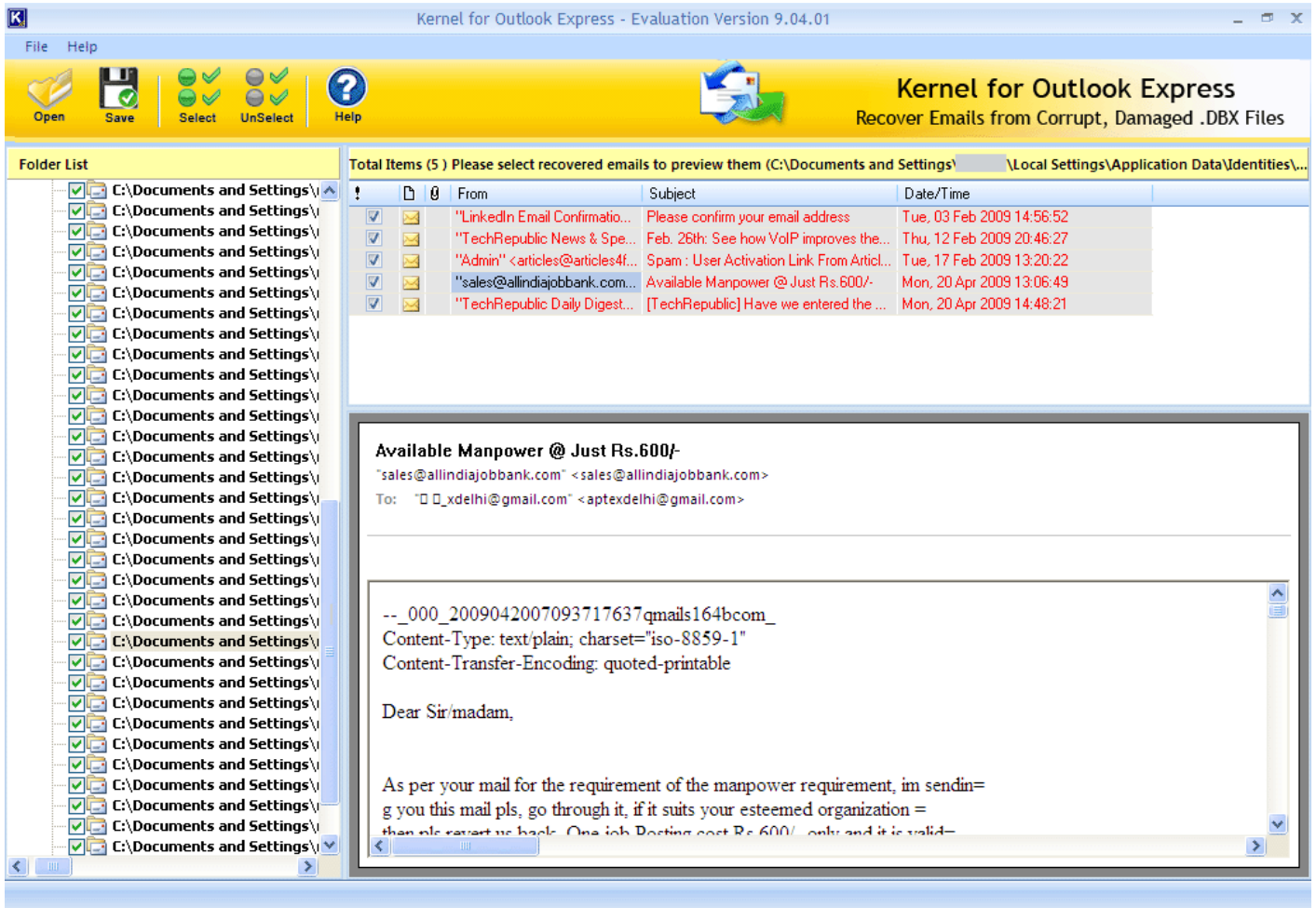


Figure 4.2: Recovered Emails

Recovered email items in **RED** color signify recovery of permanently deleted emails.

4. Select the appropriate folder for saving and click **Save** button from toolbar.

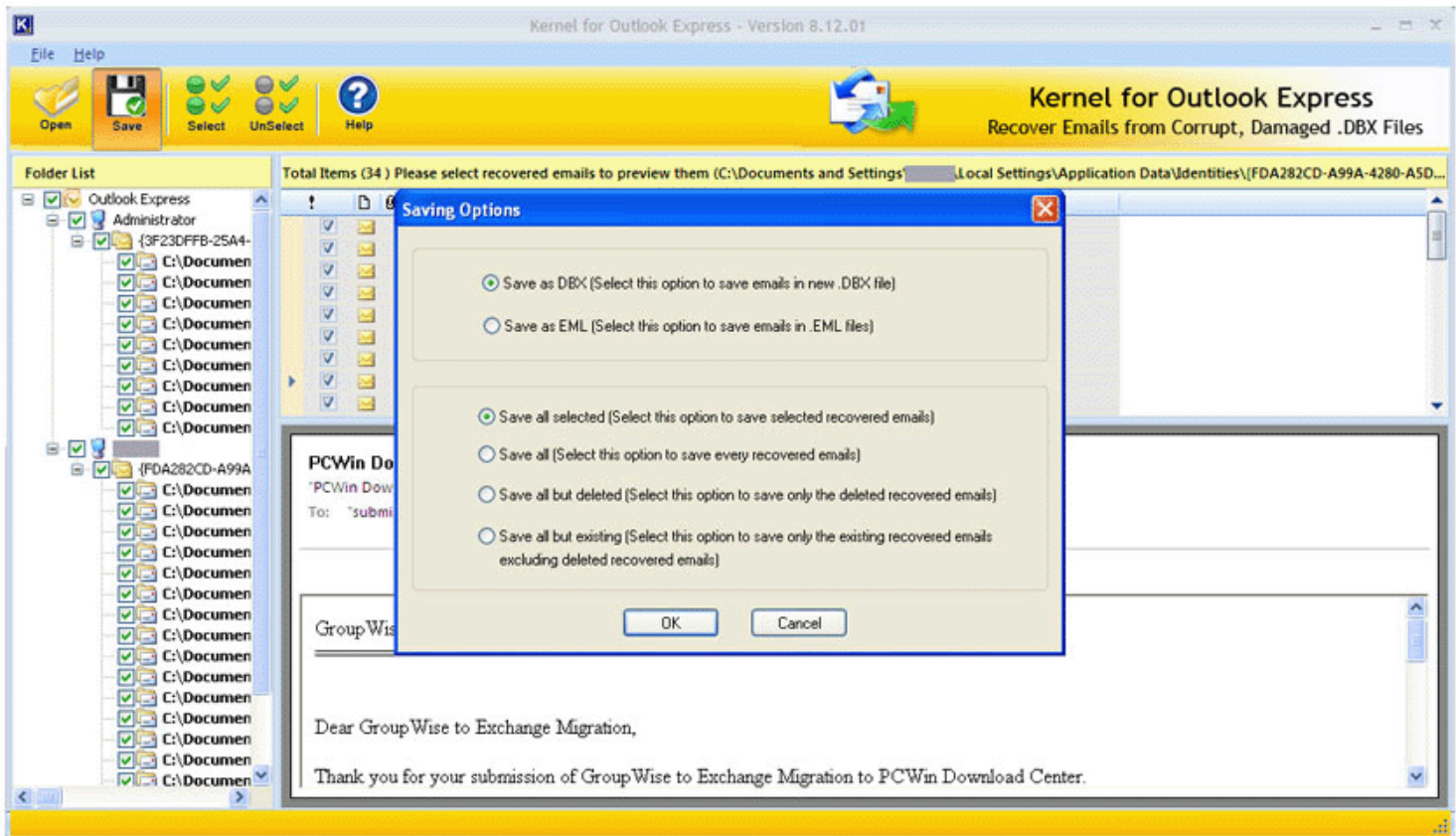


Figure 4.3: Saving Options Window

5. **Saving Options** window appears which asks for the saving option. Select the appropriate one and click **OK**.


5. Saving Repaired .DBX Files


On successful recovery of email items, Kernel for Outlook Express provides with the **Saving Options** window intended to specify the saving options as per the user's requirements.

Following saving options are available:

- **Save as DBX:** This option saves the selected recovered items in new .DBX file at the defined save location.
- **Save as EML:** This option saves the selected recovered items in .EML files in a separate folder at the defined save location.
- **Save all selected:** This option saves all the selected emails.
- **Save all:** This option saves every email item which is recovered from corrupt .DBX file / selected folder(s) for saving.
- **Save all but deleted:** This option saves only those emails which were permanently deleted and are now recovered from corrupt .DBX file / selected folder(s) for saving.
- **Save all but existing:** This option saves every email which is recovered from corrupt .DBX file / selected folder(s) for saving except those emails which were permanently deleted and are now recovered.

The first two saving options define the file format and the location where the recovered emails are allowed to save while the last four options are used for the filtration of recovered emails to simplify the saving process.

 Select any one option from the first two options and then select any one option from the last four options.

 The evaluation version has only **Save all** option enabled, the rest three are disabled (only in evaluation version).

5.1 Save as DBX

Perform the following steps to proceed with the saving process.

1. Select **Save as DBX** option from the Saving Options window in the software.

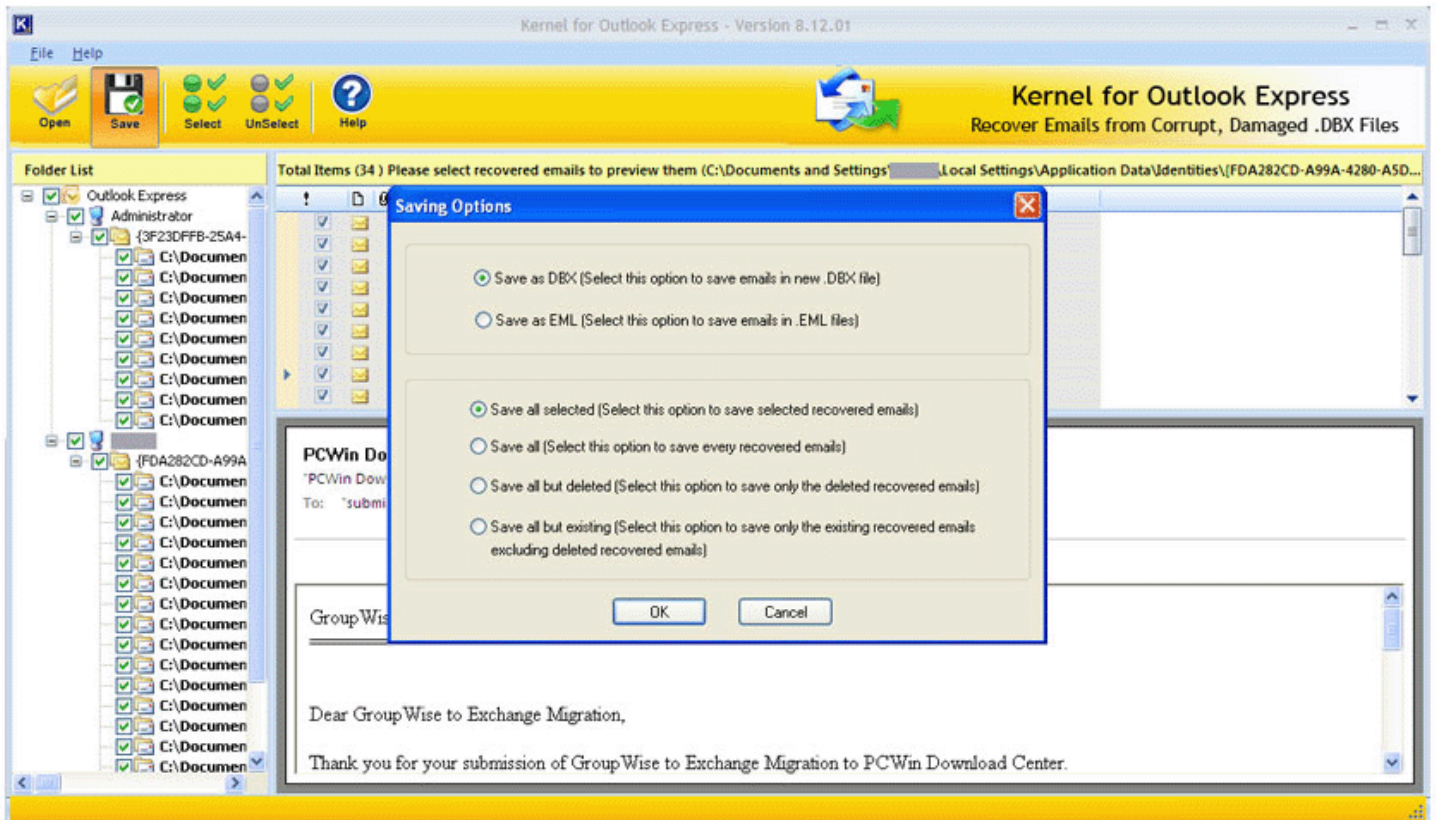


Figure 5.1 Saving Option

2. Select the other saving options as per your need: **Save all selected**, **Save all**, **save all but deleted**, **Save all but existing**.
3. Click **OK** to continue with the process.
4. A new window 'Outlook Express Folder Selection' appears to select the Outlook Express folder which saves the recovered emails in a sub folder created under the selected folder.

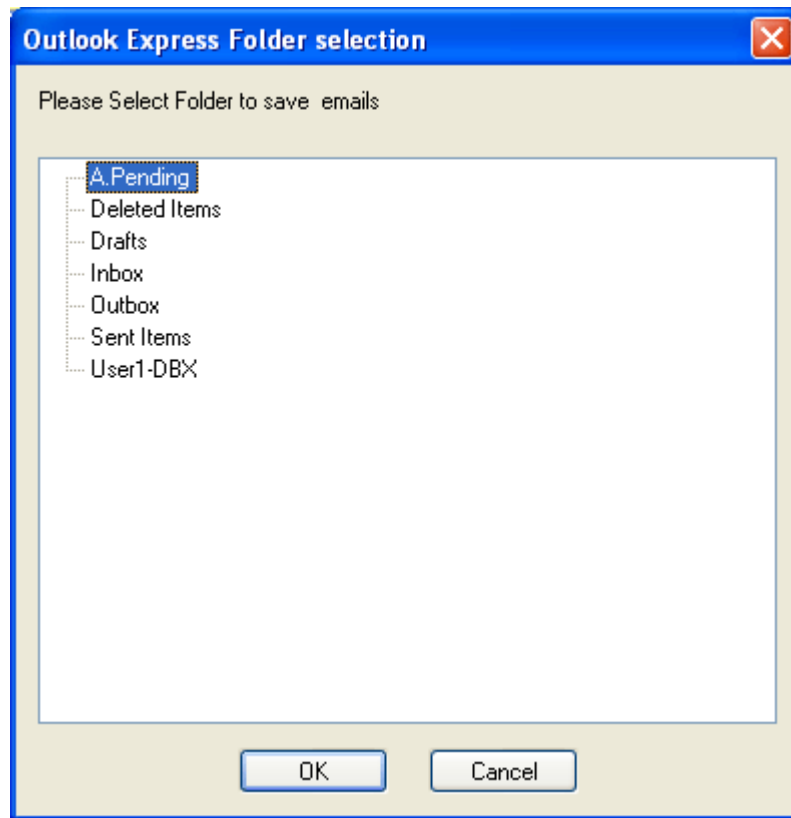


Figure 5.2: Select Folder

5. Then click **OK**. Software starts the saving process. As soon as Kernel for Outlook Express finishes the repairing and saving process, it displays the message "**Saving Process is complete**".

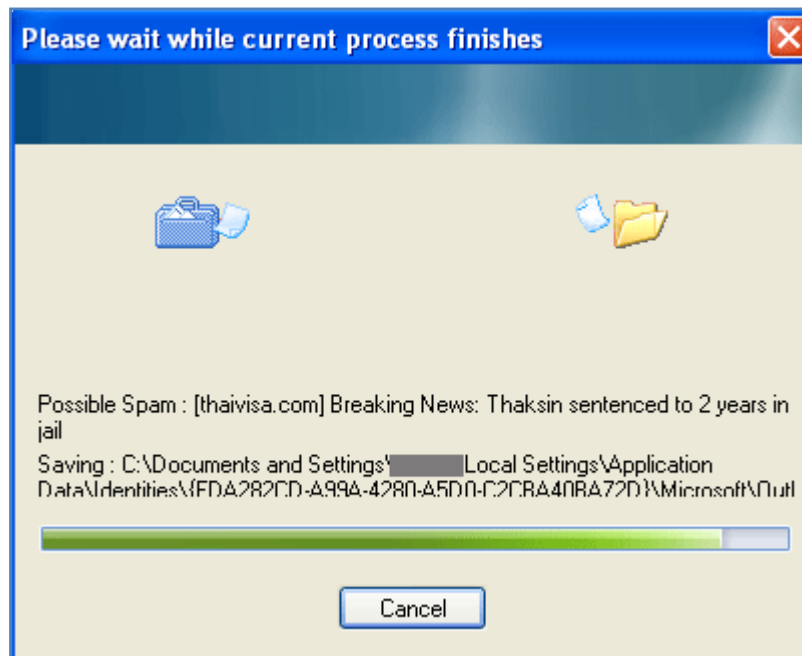


Figure 5.3: Saving Process

6. Recovered emails can be now viewed in Outlook Express under selected main folder.

5.2 Save as EML

Follow these steps to save the recovered email items in EML file format.

1. Select **Save as EML** option from the Saving Options window.

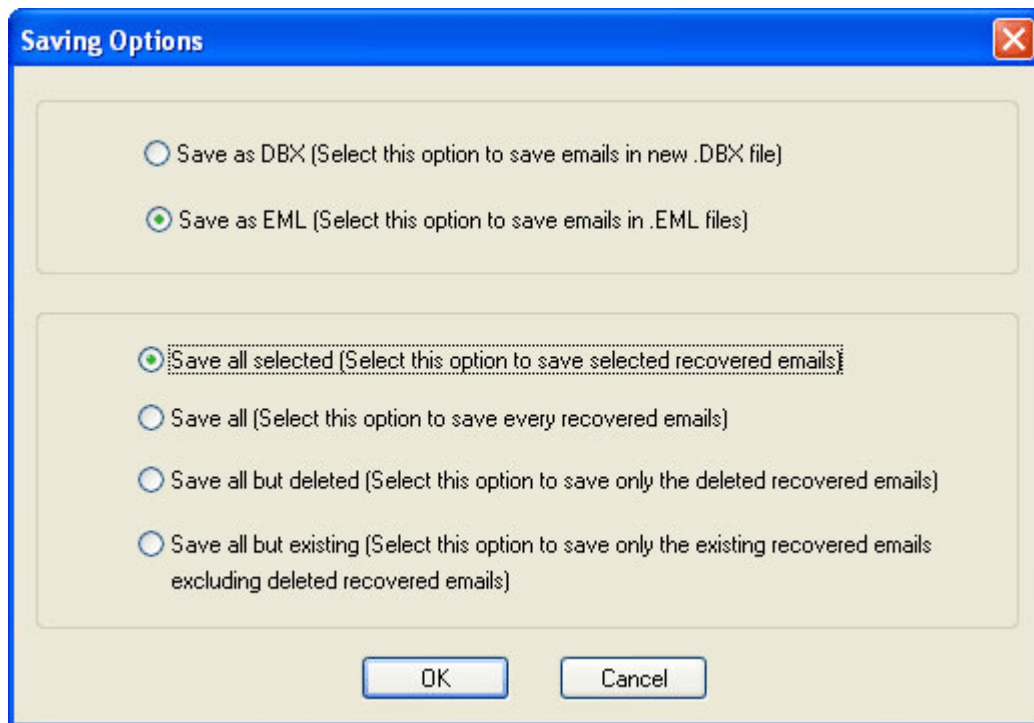


Figure 5.4 Saving Option- Save as EML

2. Select the other saving options as per your need: **Save all selected**, **Save all**, **save all but deleted**, **Save all but existing**.
3. Click **OK** to continue with the process.
4. Software displays **Browse for Folder** window. Here you need to select a location, where the .EML files will get saved and click **OK** to continue with saving process.



Figure 5.5: “Browse for Folder” Window

5. Software starts the saving process. As soon as Kernel for Outlook Express finishes the repairing and saving process, it displays the message “**Saving process is complete**”.

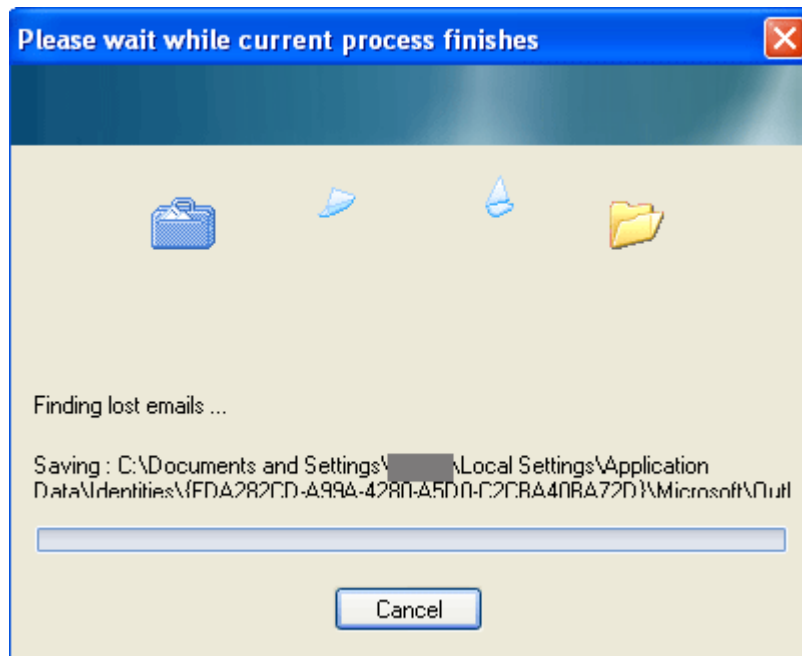


Figure 5.6: Saving Process

6. Once emails are saved, they can be viewed from the saved location.

6. Full Version

Evaluation version is provided to get acquainted with the features and functions of Kernel for Outlook Express. Although you can use Kernel for Outlook Express evaluation version for free and experience the capabilities of the software, there are certain limitations in free evaluation version.

6.1 Requirement of Full Version

With free evaluation version of Kernel for Outlook Express, you can repair corrupt dbx files; however you cannot save the entire recovered emails. Evaluation version allows saving of only first 10 emails from each dbx files which have been recovered by the software.

You will need to buy the full version of the software to save the entire recovered emails.

6.2 Purchasing Full Version

You can buy the full version of Kernel for Outlook Express from any one of our authorized resellers – Element5, Asknet and 2CO.

As soon as the purchase transaction with our resellers gets completed, our sales team will send you an email comprising the URL to download the full version of Kernel for Outlook Express and activation details of the software.

7. Support

We have an extensive and efficient support system in place to assist our customers with all issues related to using Kernel for Outlook Express. The software comes with an embedded help manual that can be accessed by clicking **Help → Software Help** in the menu-bar. You can also press the F1 key on the keyboard of your computer to access the embedded help of Kernel for Outlook Express.

You can access the online help for Kernel for Outlook Express at <http://www.nucleustechnologies.com/Online-Helps.html>

View Animated Working Demo of the software at http://www.nucleustechnologies.com/Animated_Demo_Mails.html

We also have live support wherein you can chat with our software experts at <http://www.nucleustechnologies.com/Support.html>

To talk on phone with our software experts call:

Help line:

+91-9818725861

1-866-348-7872 (Toll Free for USA/CANADA)

You can also email us about your queries at;

sales@nucleustechnologies.com for Sales

support@nucleustechnologies.com for Support

contact@nucleustechnologies.com for General Queries

8. Troubleshooting

This section deals with your generic and specific queries pertaining to using Kernel for Outlook Express.

8.1 Common Issues

Why does Kernel for Outlook Express have limitations in evaluation copy?

The free evaluation version of Kernel for Outlook Express enables its users to get acquainted with the features and functions of the software before purchasing the full version of the software. Free demo version saves only 10 emails from each folder. To save the entire recovered emails, full version needs to be purchased.

8.2 Frequently Asked Questions

How to Buy Kernel for Outlook Express?

You can buy Kernel for Outlook Express online at <http://www.nucleustechnologies.com/Buy-Outlook-Express-Mails-Recovery-Software.php>

I have lost my full version for Kernel for Outlook Express. Can you help me?

Please email us at sales@nucleustechnologies.com. Please include your name, address, email address, and order confirmation number (if you have it). We will be happy to help you.

How to identify the deleted emails which are recovered by the software?

Recovered deleted emails are displayed in **RED** color for identification.

What are the supported versions of Outlook Express?

Kernel for Outlook Express supports repairing of dbx files created with Outlook Express 5.0 and above.

How much time would be required to repair the corrupt dbx files?

Repair and recovery time depends on the intensity of the corruption caused to your dbx files.

Evaluation version does not save all the recovered emails. With free evaluation version, how can I know that the software is powerful enough to provide complete and exact recovery of email and its associated properties?

Kernel for Outlook Express is equipped with a view preview before saving feature. With this feature, you can analyze the correctness and completeness of your emails and its associated properties before saving. In this way, you can check the efficiency of the software before buying its full version.

9. Legal Notices

This section comprises the legal specification about Kernel for Outlook Express and the company NUCLEUS DATA RECOVERY.COM PRIVATE LIMITED

9.1 Copyright

NUCLEUS DATA RECOVERY.COM PRIVATE LIMITED, Nucleus Kernel accompanied user manual and documentation are copyright of NUCLEUS DATA RECOVERY.COM PRIVATE LIMITED, with all rights reserved. Under the copyright laws, this user manual cannot be reproduced in any form without the prior written permission of NUCLEUS DATA RECOVERY.COM PRIVATE LIMITED. No Patent Liability is assumed, however, with respect to the use of the information contained herein.

© NUCLEUS DATA RECOVERY.COM PRIVATE LIMITED. All rights reserved.

9.2 Trademark

Nucleus Kernel ® is a copyright work of Nucleus Data Recovery.Com Private Limited

Windows 95®, Windows 98®, Windows ME®, Windows NT®, Windows 2000 Server®, Windows 2000 Advanced Server®, Windows 2003 Server®, Windows XP®, Windows Vista®, MS-DOS and Outlook Express are registered trademarks of Microsoft Corporation.

All other brand and product names are trademarks or registered trademarks of their respective companies.

9.3 Disclaimer

The Information contained in this manual, including but not limited to any product specifications, is subject to change without notice. NUCLEUS DATA RECOVERY.COM PRIVATE LIMITED provides no warranty with regard to this manual or any other information contained herein and here by expressly disclaims any implied warranties of merchantability or fitness for any particular purpose with regard to any of the foregoing NUCLEUS DATA RECOVERY.COM PRIVATE LIMITED assumes no liability for any damages incurred directly or indirectly from any technical or typographical errors or omissions contained herein or for discrepancies between the product and the manual. In no event shall NUCLEUS DATA RECOVERY.COM PRIVATE LIMITED, be liable for any incidental, consequential special, or exemplary damages, whether based on tort, contract or otherwise, arising out of or in connection with this manual or any other information contained herein or the use there of.

9.4 License Agreement

Kernel for Outlook Express Copyright © by NUCLEUS DATA RECOVERY.COM PRIVATE LIMITED

Your Agreement to this License

You should carefully read the following terms and conditions before using, installing or distributing this software, unless you have a different license agreement signed by NUCLEUS DATA RECOVERY.COM PRIVATE LIMITED. The terms and conditions of this License describe the permitted use and users of each Licensed Copy of Kernel for Outlook Express. For purposes of this License, if you have a valid license, you have the right to use a single Licensed Copy of Nucleus Kernel.

Scope of License

Each Licensed Copy of Kernel for Outlook Express may either be used by a single person or used non-simultaneously by multiple people who use the software personally installed on a single workstation. All rights of any kind in Nucleus Kernel, which are not expressly granted in this License, are entirely and exclusively reserved to and by NUCLEUS DATA RECOVERY.COM PRIVATE LIMITED. You may not rent, lease, modify, translate, reverse engineer, decompile, disassemble, or create derivative works based on, Nucleus Kernel, nor permit anyone else to do so. You may not make access to Nucleus Kernel available to others in connection with a service bureau, application service provider, or similar business, nor permit anyone else to do so.

Warranty Disclaimers and Liability Limitations

Kernel for Outlook Express, and any and all accompanying software, files, data and materials, are distributed and provided AS IS and with no warranties of any kind, whether expressed or implied. In particular, there is no warranty for the quality of data recovered. You acknowledge that good data processing procedure dictates that any program, including Nucleus Kernel, must be thoroughly tested with non-critical data before there is any reliance on it, and you hereby assume the entire risk of all use of the copies of Nucleus Kernel covered by this License. This disclaimer of warranty constitutes an essential part of this License. In addition, in no event does NUCLEUS DATA RECOVERY.COM PRIVATE LIMITED authorize you or anyone else to use Kernel for Outlook Express in applications or systems where Kernel for Outlook Express failure to perform can reasonably be expected to result in a significant physical injury, or in loss of life. Any such use is entirely at your own risk, and you agree to hold NUCLEUS DATA RECOVERY.COM PRIVATE LIMITED harmless from any and all claims or losses relating to such unauthorized use.

General

This License is the complete statement of the agreement between the parties on the subject matter, and merges and supersedes all other or prior understandings, purchase orders, agreements and arrangements. This License shall be governed by the laws of the State of Delhi. Exclusive jurisdiction and venue for all matters relating to this License shall be in courts and for a located in the State of Delhi, and you consent to such jurisdiction and venue. There are no third party beneficiaries of any promises, obligations or representations made by NUCLEUS DATA RECOVERY.COM PRIVATE LIMITED herein.

Any waiver by NUCLEUS DATA RECOVERY.COM PRIVATE LIMITED of any violation of this License by you shall not constitute, nor contribute to, a waiver by NUCLEUS DATA RECOVERY.COM PRIVATE LIMITED of any other or future violation of the same provision, or any other provision, of this License.