

USER'S MANUAL ADDENDUM

Matched Pair Bridges

Certain AvaLAN radios are sold as matched pairs, pre-configured as a wireless Ethernet bridge. The manual supplied with the pair does not include information about the pair configuration, hence this addendum.

This addendum applies to these products:

| | | |
|---------------|----------------|----------------|
| AW900xTR-PAIR | AW2400xTR-PAIR | AW5800xTR-PAIR |
| AW900iTR-PAIR | AW2400iTR-PAIR | |
| AW900xTP-PAIR | AW2400xTP-PAIR | AW5800xTP-PAIR |

The pair configuration as shipped from the factory consists of these features:

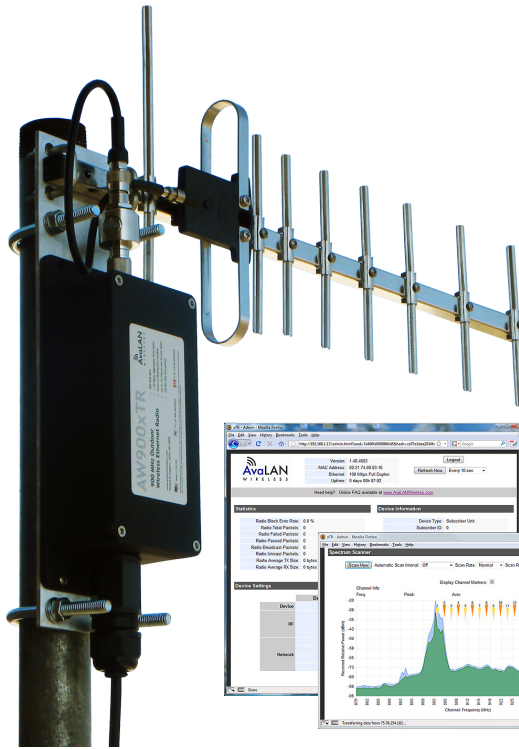
1. One unit of the pair is configured as an Access Point and the other is configured as a Subscriber Unit.
2. The Access Point is given the IP Address 192.168.17.17.
3. The Subscriber Unit is given the IP Address 192.168.17.18.
4. User-specified encryption keys are disabled and the two radios are keyed to each other using the "Auto-Key" method.
5. RF Channel selection is set to automatic mode.

If these configuration parameters work for you in your system, you need only to connect antennas, power and LAN and the pair should work transparently, looking just like an Ethernet cable.

If you need to change any of the pair's parameters, you may use the browser interface as described in the accompanying manual. You might need to do this if you need to set the pair to a particular channel, or you wish to provide your own encryption keys. If the default IP Addresses won't work in your system, the best way to change them is by using the ipfinder utility described in the manual and downloadable from www.avalanwireless.com.

In case of difficulty, you may find additional help under the Support tab on our website or by contacting AvaLAN Technical Support using the information in the manual.

Revision 08.11.2010



AW900xTR

USER'S MANUAL

900 MHz Outdoor Wireless Ethernet Radio

Industrial-grade, long-range wireless Ethernet systems

AvaLAN
WIRELESS

Thank you for your purchase of the AW900xTR Outdoor Wireless Ethernet Radio.

The AW900xTR includes:

- (1) Radio in weatherproof die-cast aluminum package
- (1) AW2-900 Flexible Antenna
- (1) 120 VAC to 12 VDC power adapter
- (1) AW-POE Power Over Ethernet Injector

If you have any questions when configuring your AvalAN system, the best place to get answers is to visit www.avalanwireless.com.

You will also find the latest updates there.

If more assistance is needed, send email to support@avalanwireless.com.

To speak to a live technician, please call technical support at the number below during normal business hours.



(Product shown with optional AW11-900 Antenna)

© by AvalAN Wireless Systems Inc. All rights reserved.

Revision 04.27.2012

125A Castle Drive
Madison, AL 35758

Sales: (866) 533-6216
Technical Support: (650) 384-0000
Customer Service: (650) 641-3011
Fax: (650) 249-3591

Operational summary

The AW900xTR Radio allows the user to create a long-range, wireless Ethernet network with up to 16 subscriber units per access point. The configuration may include any combination of AW900xTR, AW900iTR and AW900xTP radios. (Please note that older AvaLAN 900 MHz radios can exist on the same LAN but cannot be used to form wireless links with the AW900xTR units because link encryption protocols have changed.)

Configuring a wireless link with the AW900xTR requires the establishment of six elements:

- Each radio must know whether it is to be an access point (AP) or subscriber unit (SU).
- Each radio must have an IP address that is unique among all others on the same network.
- The AP must know how many SUs are expecting communication with it.
- The AP and any given SU must agree on which radio frequency channel they are using. This can be manually set or allowed to change automatically.
- The SU must be assigned a unique subscriber ID to specify which time division slot it will use when communicating with the AP.
- The AP and any given SU must share a common 128-bit encryption key.

AW900xTR radios may be configured by two different methods. They may be connected to a computer that will run a web browser, setting parameters via their built-in browser interfaces. They may also be programmed via the older “easy key” method using the DIP switches and LEDs on the module inside the case. If you wish to use the older method, go to our website and download the user manual for the AW900IT or AW900xT and follow the procedures there.

The access point (AP) automatically scans for the best of the 12 available radio frequency channels, encrypts Ethernet data received from the network, and transmits it wirelessly to the correct subscriber unit (SU). The AP is constantly monitoring the radio link and can automatically change the channel if performance is degraded due to interference. If two AP units are very close to one another, they may interfere if operating on adjacent frequency channels. Place them at least 10 feet apart or manually select non-adjacent channels for their operation. Also, the SU should be placed at least 10 feet from the AP to avoid overloading the radio's receiver.

Any 10/100 BaseT Ethernet client device (ECD) can be connected to an AW900xTR subscriber unit. Each SU encrypts Ethernet traffic received from the attached ECD and transmits the data wirelessly to its AP. Each SU can be plugged directly into an ECD without adding drivers or loading software. Essentially, once the AP/SU pair is configured and running it behaves like a continuous Ethernet cable.

Physical Setup

1. Before mounting the radio in its final location, you may want to perform the digital setup procedure described in the next section.

2. Mount the AW900xTR securely. Maximize lightning resistance by providing a strong DC ground connection to the metal housing. Connect the AW900xTR's TNC RF connector to a suitable antenna. A simple omni-directional dipole unit (AW2-900) is included and may be used for testing and for relatively undemanding applications. If greater range and/or directionality is required, choose one of our other antenna models. You may see them on our website at www.avalanwireless.com.

3. Power is provided to the unit by means of the Ethernet cable, allowing the power supply to be located at a convenient location. The included power-over-Ethernet injector (POE) provides the means for adding DC power to unused wires in the cable. Decide where to place the POE based on proximity to AC power at some point along the desired path of the Ethernet cable. Plug the included power supply into an appropriate electrical outlet and into the POE. Connect an Ethernet cable between your network and the "DATA IN" port on the POE. Connect a second cable from the "P + DATA OUT" port on the POE and the AW900xTR. The AW900xTR is provided with a cable clamping device that allows an RJ45 plug on the cable to pass through it and can be tightened down around the cable to provide a weatherproof seal.

4. This radio is suitable for use in Class I, Division 2, Groups A,B,C,D or non-hazardous locations only. The radio is Class I, Division 2 when using the POE and power supply provided with the product and installed using wiring methods in accordance with the Canadian Electrical Code (CEC) for Canada and the National Electric Code (NEC) for U.S. The POE and power supply should be used only in areas known to be non-hazardous.

WARNING - EXPLOSION HAZARD - DO NOT DISCONNECT EQUIPMENT UNLESS POWER HAS BEEN SWITCHED OFF OR THE AREA IS KNOWN TO BE NON-HAZARDOUS;

AVERTISSEMENT - RISQUE D'EXPLOSION - AVANT DE DÉCONNECTER L'ÉQUIPEMENT, COUPER LE COURANT OU S'ASSURER QUE L'EMPLACEMENT EST DÉSIGNÉ NON DANGEREUX.

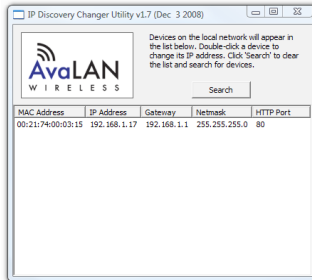
Digital Setup

1. Digital configuration is done by means of the AW900xTR's built in browser interface. It should be powered on and connected at least temporarily to a network containing a computer that can run a conventional web browser.

2. Download the AvaLAN IP Discovery Utility from our website and extract ipfinder.exe from the zip archive, placing it on your desktop or in a convenient folder. Just go to www.avalanwireless.com and choose Support >> Downloads from the top menu. Note that this utility only runs on MS Windows, not linux or MAC. If you must use a non-Windows computer for configuration, make sure your subnet

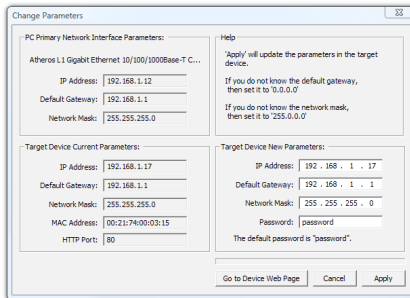
mask allows your computer to see 192.168.17.17. Connect to that default IP address with your web browser, continuing the setup procedure with step 6.

3. Run the IP Discovery Utility, ipfinder.exe and you should see a window similar to this:



The AW900xTR should appear in the list at the default IP address of 192.168.17.17. If it does not, click “Search” to regenerate the list. If it still does not appear, you have a connection issue and need to re-examine the cabling or you may have a firewall issue on your computer.

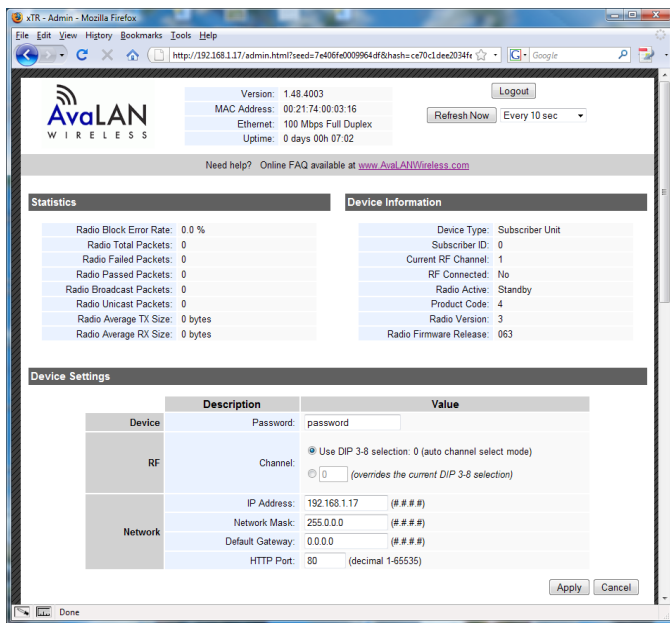
4. Double click the list item that refers to the AW900xTR being configured. You should see a second window that is similar to this:



The information on the left is the current status of the radio, while the boxes on the right allow you to change it. It is important that the IP address of the AW900xTR is in the same subnet as your computer. For example, if the subnet mask is 255.255.255.0 (a class C network), the first three number groups of the IP address must match. Choose your desired parameters and click “Apply.”

5. Make note of the chosen IP address and password, then click “Go to Device Web Page.” This will cause your default web browser to launch with the device IP address in the browser address bar. Or you may launch the browser on your own and enter the web page address manually: http://[the IP address you just set].

6. The browser page that loads first shows the current device information and QoS statistics and provides a login at the upper right. Log in using the password you just specified (or “password” if you kept the default). If the login succeeds, you will see an admin page similar to this:

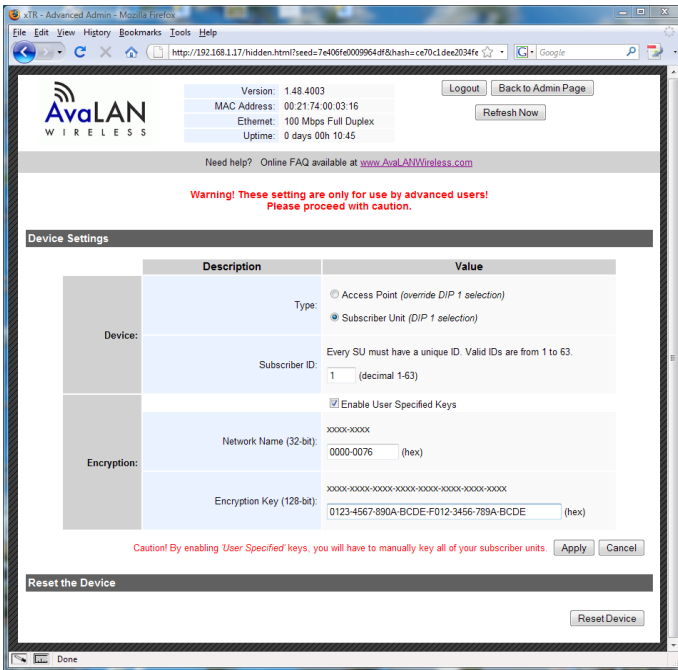


7. The admin page has sections similar to the login page showing radio statistics and device information plus it adds several new sections. The Device Settings section allows setting the network information and choosing an RF frequency channel. The default is to allow the radio to choose its own frequency based on minimizing interference. If you set a fixed channel, make sure the AP and all SUs use the same one. References to DIPs on this and the next web page refer to switches inside the radio that are used in the legacy method of configuration and may be ignored when using the browser method.

If you scroll down in the Admin browser page, you will come to three more sections:

- A graphical spectrum analyzer display that may help you to select radio channels that avoid interference
- A section to be used if an update to the AW900xTR's firmware is required
- An Advanced Links section with a dire **warning** about advanced users only.

Despite the warning, you will need to click the “Advanced Admin” button in order to set the device type, ID and encryption key. You should then see a page similar to that on the next page.



8. On the Advanced Admin page, set the parameters as follows:
 - Choose Device Type: Access Point or Subscriber Unit.
 - For Subscriber Units, assign unique ID numbers in numeric order from 1 to 63.
 - For an Access Point, enter the number of Subscriber Units that will be communicating with it.
 - Click the box labeled “Enable User Specified Keys.”
 - Choose an 8-digit hex (0-9 and A-F) Network Name that will be common among the AP and its SUs and enter it. The hyphen is required.
 - Choose a 32-digit hex encryption key and enter it. Again, the hyphens are required. This key must match between the AP and the SU so make a note of it as well.

After entering the parameters, click the “Apply” button to save them to the radio.

9. When all of the radios are keyed and operating, connect them to your network and Ethernet devices as desired and cycle the radio’s power to begin normal operation. Now, browser management of the SUs can be performed over the wireless network. Note: avoid plugging actively linked radios into the same switch because this will corrupt its routing table and may cause network problems just as if you had plugged a CAT5 cable directly between two ports of a switch.

900 MHz Channels

| Channel | Center Frequency |
|---------|------------------|
| 0 | Auto Mode |
| 1 | 903.12500 MHz |
| 2 | 905.20833 MHz |
| 3 | 907.29167 MHz |
| 4 | 909.37500 MHz |
| 5 | 911.45833 MHz |
| 6 | 913.54167 MHz |
| 7 | 915.62500 MHz |
| 8 | 917.70833 MHz |
| 9 | 919.79167 MHz |
| 10 | 921.87500 MHz |
| 11 | 923.95833 MHz |
| 12 | 926.04167 MHz |

Limited Warranty

This product is warranted to the original purchaser for normal use for a period of 360 days from the date of purchase. If a defect covered under this warranty occurs, AvalAN will repair or replace the defective part, at its option, at no cost. This warranty does not cover defects resulting from misuse or modification of the product.

Compliance Statement (Part 15.19)

This device complies with Part 15 of the FCC Rules.

Operation is subject to the following two conditions:

1. This device may not cause harmful interference, and
2. This device must accept any interference received, including interference that may cause undesired operation.

Warning (Part 15.21)

Changes or modifications not expressly approved by the party responsible for compliance could void the user's authority to operate the equipment.

RF Exposure (OET Bulletin 65)

To comply with FCC RF exposure requirements for mobile transmitting devices, this transmitter should only be used or installed at locations where there is at least 20cm separation distance between the antenna and all persons.

Information to the User - Part 15.105 (b)

This equipment has been tested and found to comply with the limits for a Class B digital device, pursuant to part 15 of the FCC Rules. These limits are designed to provide reasonable protection against harmful interference in a residential installation. This equipment generates, uses and can radiate radio frequency energy and, if not installed and used in accordance with the instructions, may cause harmful interference to radio communications. However, there is no guarantee that interference will not occur in a particular installation. If this equipment does cause harmful interference to radio or television reception, which can be determined by turning the equipment off and on, the user is encouraged to try to correct the interference by one or more of the following measures:

- Reorient or relocate the receiving antenna.
- Increase the separation between the equipment and receiver.
- Connect the equipment into an outlet on a circuit different from that to which the receiver is connected.
- Consult the dealer or an experienced radio/TV technician for help.