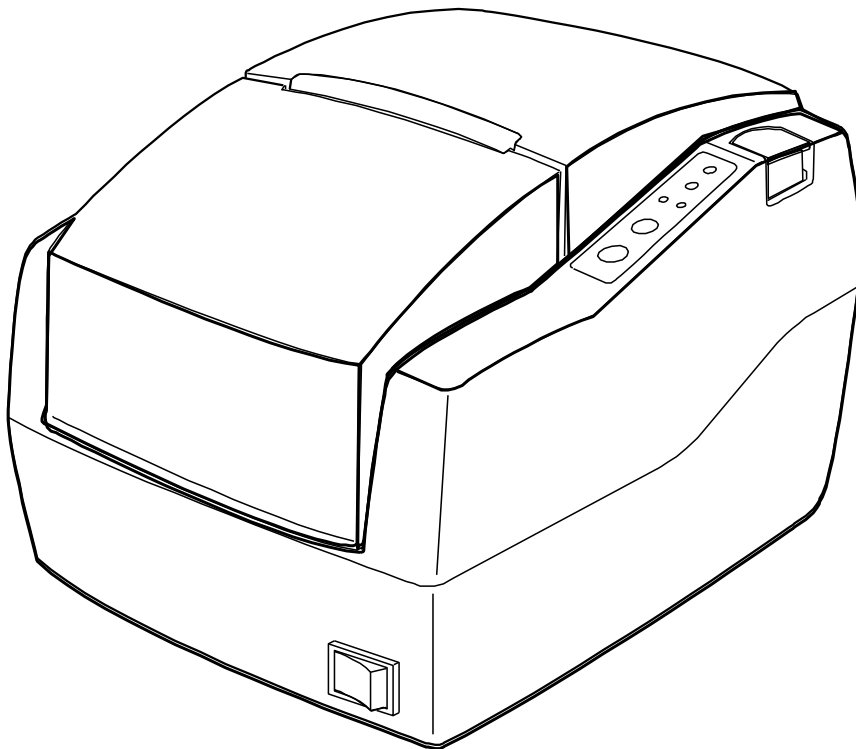


BIXOLON®

Windows Driver Manual
SRP-500

Mobile Printer
Rev. 2.08



<http://www.bixolon.com>

■ Table of Contents

| | |
|------------------------------------------------------------|-----------|
| 1. Manual Information..... | 3 |
| 2. Operating System (OS) Environment..... | 3 |
| 3. Windows Driver Preparation..... | 3 |
| 4. Windows Driver Installation..... | 4 |
| 4-1 Installing on Windows XP / Server 2003..... | 4 |
| 4-1-1 Via Serial Port or Parallel Port..... | 4 |
| 4-1-2 Via USB Port..... | 7 |
| 4-2 Installing on Windows VISTA / Server 2008 / 7 / 8..... | 12 |
| 4-2-1 Via Serial Port or Parallel Port..... | 12 |
| 4-2-2 Via USB Port..... | 15 |
| 5. Detailed Windows Driver Settings..... | 18 |
| 5-1 Paper Supply Method..... | 18 |
| 5-2 Paper Size..... | 21 |
| 5-3 Additional Commands..... | 22 |
| 6. Windows Driver Specifications..... | 24 |
| 6-1 Fonts..... | 24 |
| 6-2 Special Functions..... | 25 |
| 6-3 Barcodes..... | 27 |
| 7. Use of Windows Driver..... | 28 |
| 7-1 Use of Visual Basic..... | 28 |
| 7-1-1 Windows Driver Selection..... | 28 |
| 7-1-2 Test Printing..... | 29 |
| 7-1-3 Barcode Printing..... | 29 |
| 7-2 Use of Wordpad..... | 30 |
| 7-2-1 Wordpad Environment Settings..... | 30 |
| 7-2-2 Text Printing..... | 30 |
| 7-2-3 Barcode Printing..... | 31 |

1. Manual Information

This Windows Driver Installation Manual provides information on installation, detailed specifications, and usage of the printer's Windows Driver according to PC operating system (OS).

We at BIXOLON maintain ongoing efforts to enhance and upgrade the functions and quality of all our products. In following, product specifications and/or user manual content may be changed without prior notice.

2. Operating System (OS) Environment

The following operating systems are supported for usage.

- Microsoft Windows XP (32bit/64bit)
- Microsoft Windows Server 2003 (32bit/64bit)
- Microsoft Windows VISTA (32bit/64bit)
- Microsoft Windows Server 2008 (32bit/64bit)
- Microsoft Windows Server 2008R2 (64bit)
- Microsoft Windows 7 (32bit/64bit)
- Microsoft Windows 8 (32bit/64bit)

3. Windows Driver Preparation

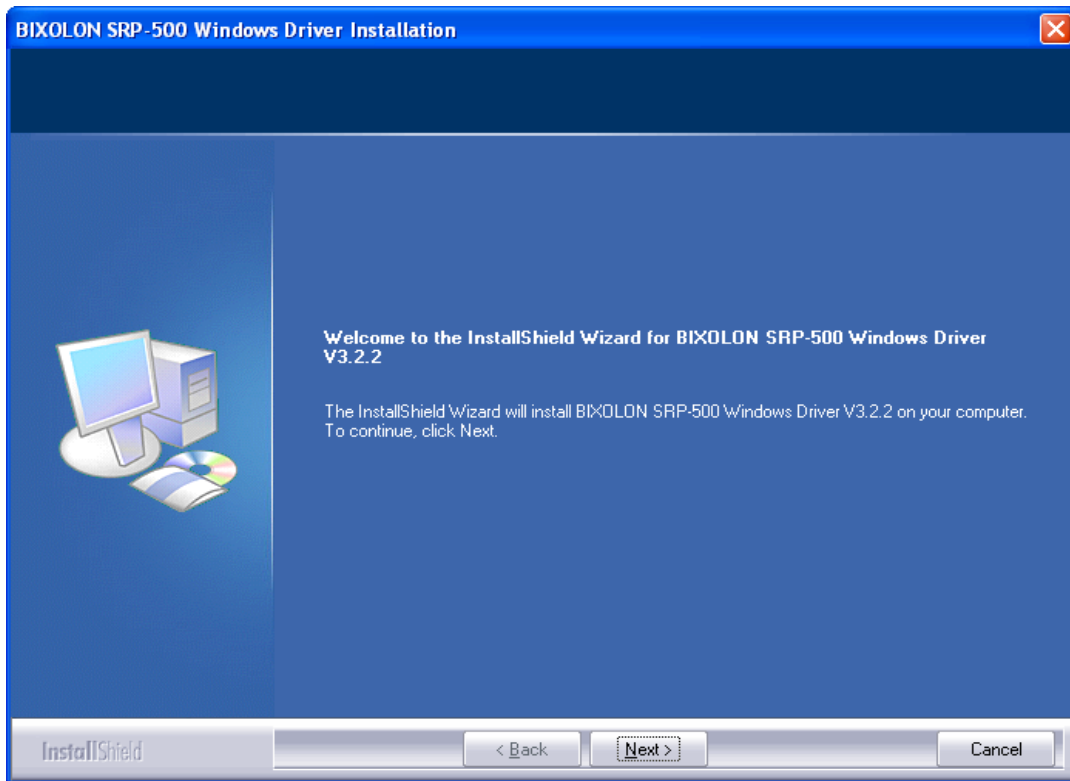
The Windows Driver is included in the enclosed CD, and Latest file versions can be downloaded from the BIXOLON website. (www.bixolon.com)

4. Windows Driver Installation

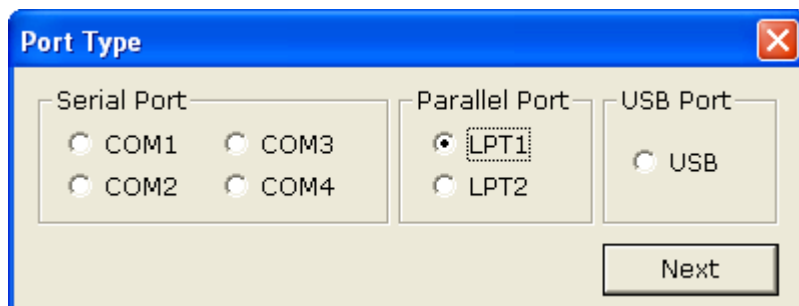
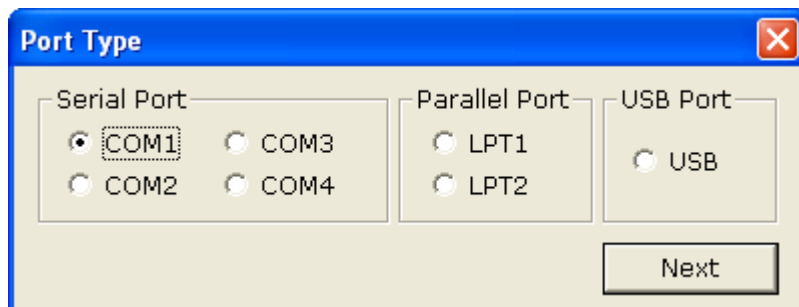
4-1 Installing on Windows XP / Server 2003

4-1-1 Via Serial Port or Parallel Port

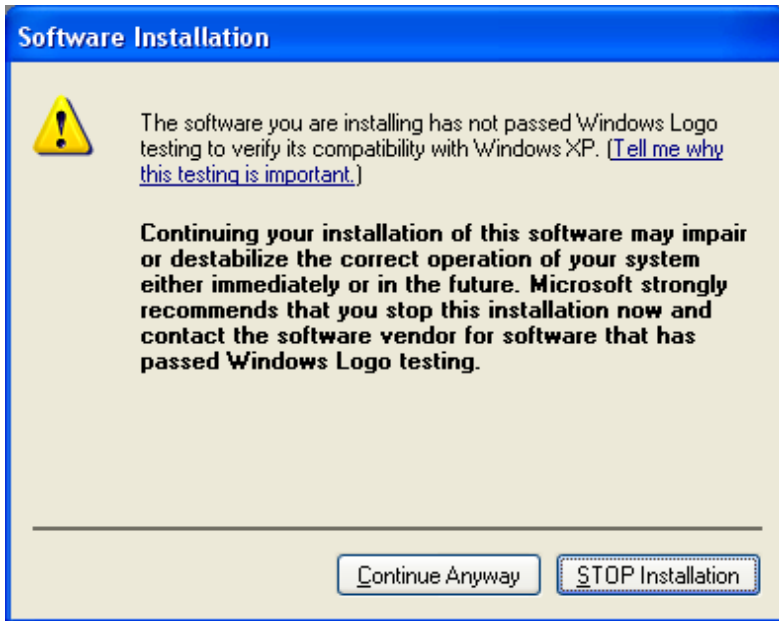
- 1) Double-click the Windows Driver installation file.
- 2) Click the “Next” button.



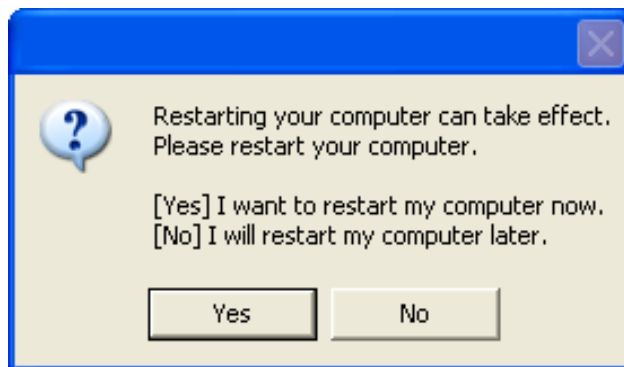
- 3) Select the COM or LPT (Which one you want to use) port to be used and click the “Next” button.



4) When the following message box appears, click the “Continue Anyway” button.



5) Clicking the “Yes” button will reboot the PC.



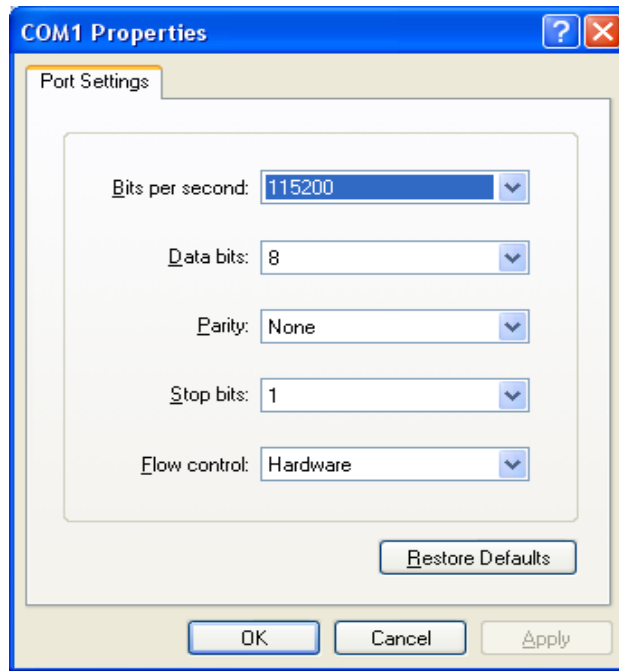
6) Open the printer properties window in the Windows OS.

※ Control Panel – Printers and Faxes.

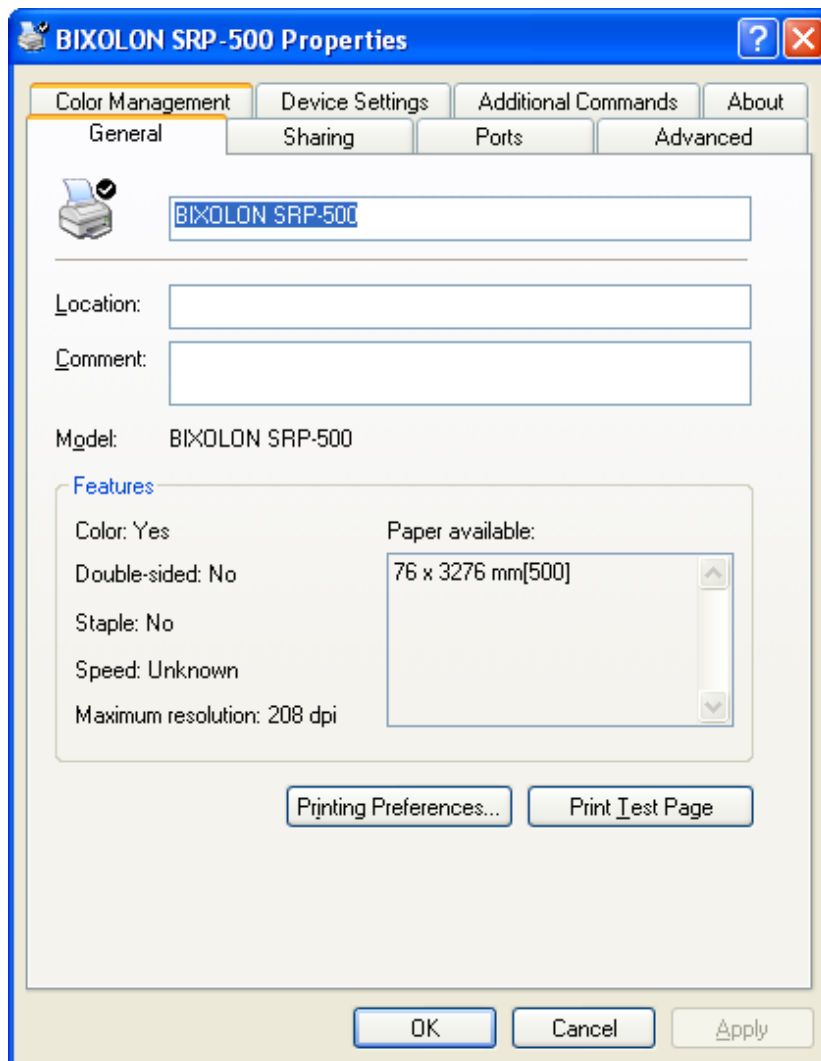
7) If you select a serial port, click the “Configure Port...” button in the “Ports” tab.

8) If you select a serial port, match the communication settings to those of the printer.

(The communication settings of the printer can be performed by conducting a self-test.)



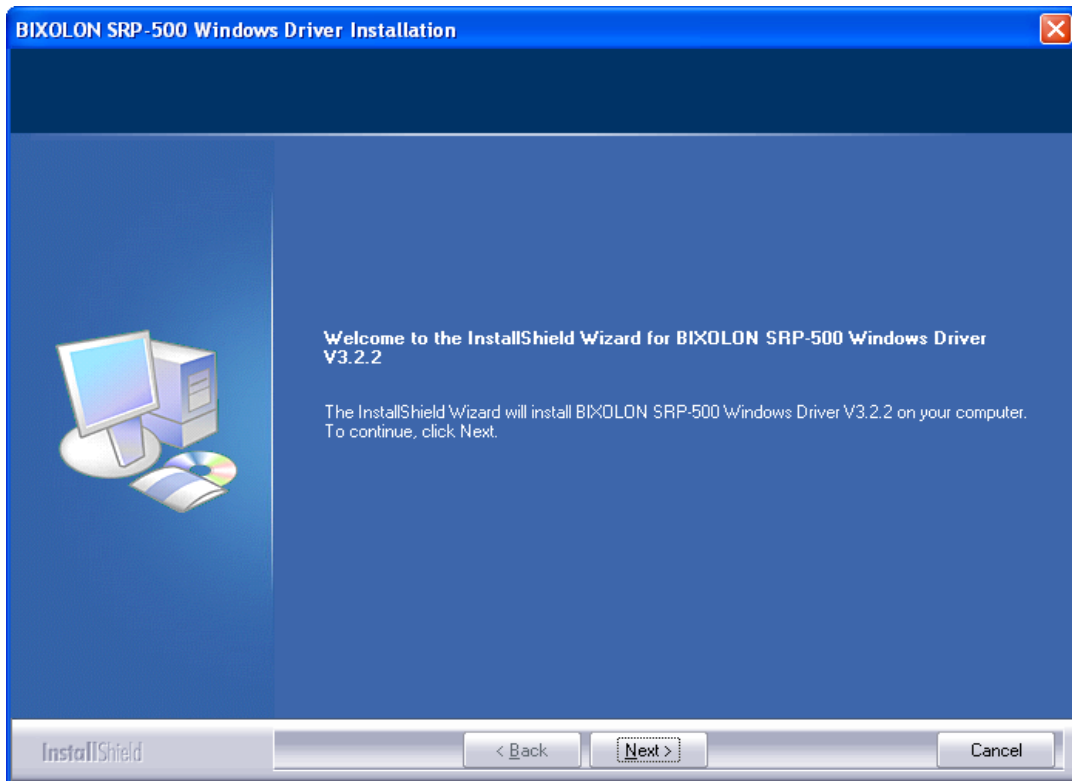
9) Click the “Print Test Page” button and check printing status.



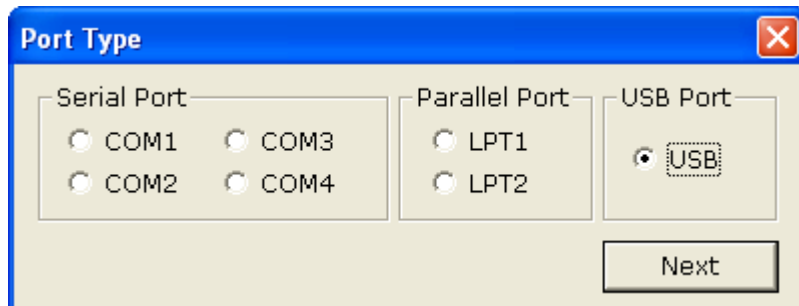
10) Proper installation of the driver is indicated if the test page is printed normally.

4-1-2 Via USB Port

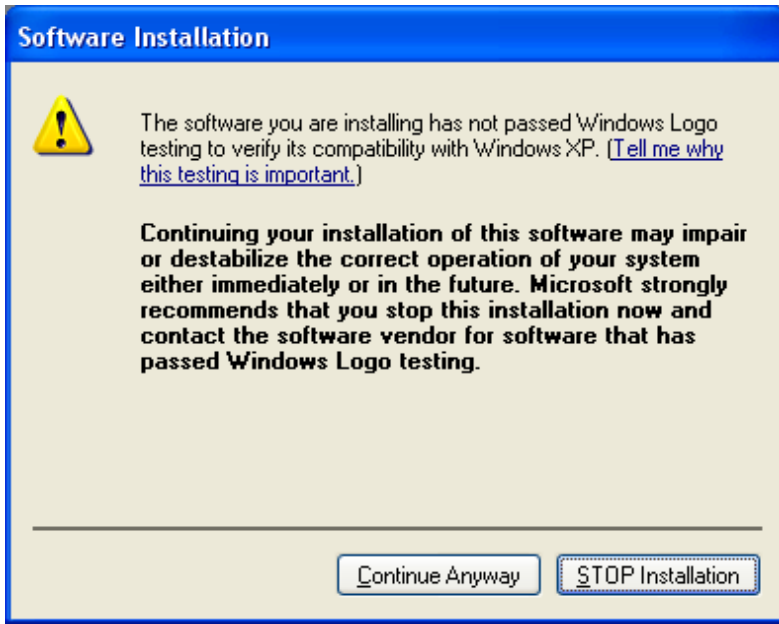
- 1) Double-click the Windows Driver installation file.
- 2) Click the “Next” button.



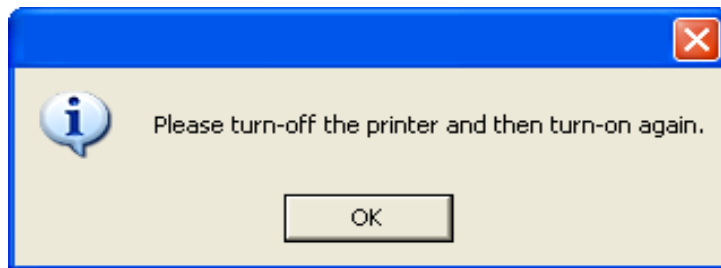
- 3) Select USB and click the “Next” button.



4) When the following message box appears, click the “Continue Anyway” button.



5) Click the “OK” button.

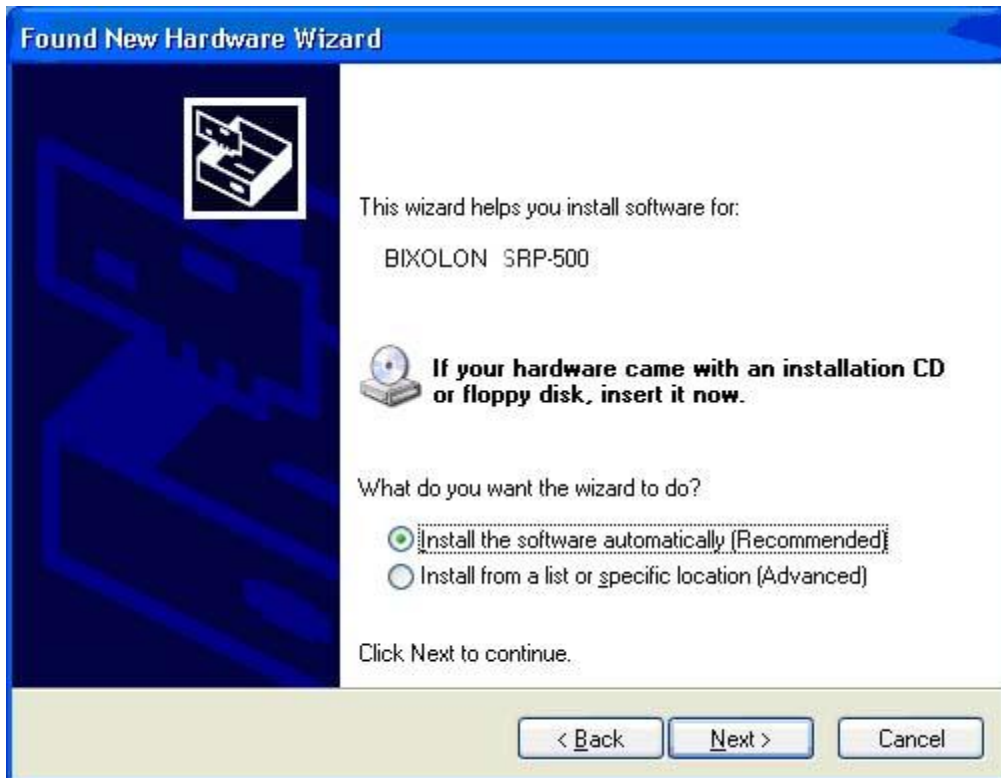


6) Turn off the printer and then turn on again.

7) When the New Hardware Wizard appears for the installation of the Windows Driver, select the option as shown below and click the “Next” button.



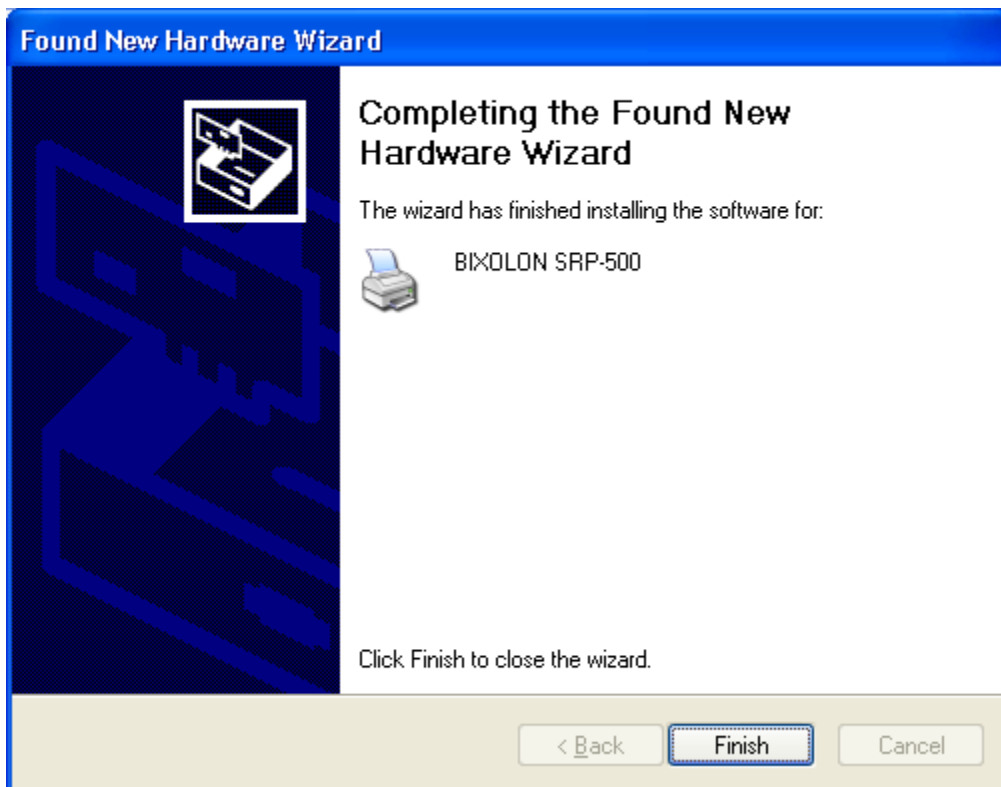
8) Click the “Next” button.



9) When the following message box appears, click the “Continue Anyway” button.



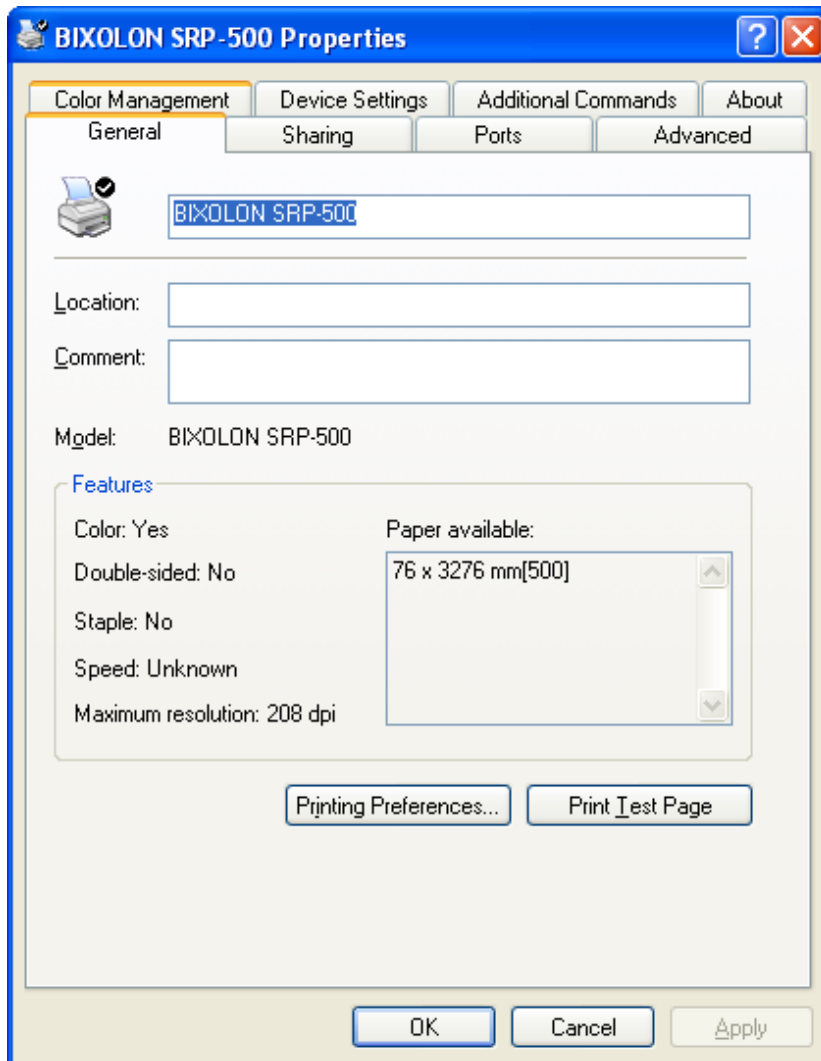
10) Click the “Finish” button.



11) Open the printer properties window in the Windows OS.

- ※ Control Panel – Printers and Faxes.

12) Click the “Print Test Page” button and check printing status.

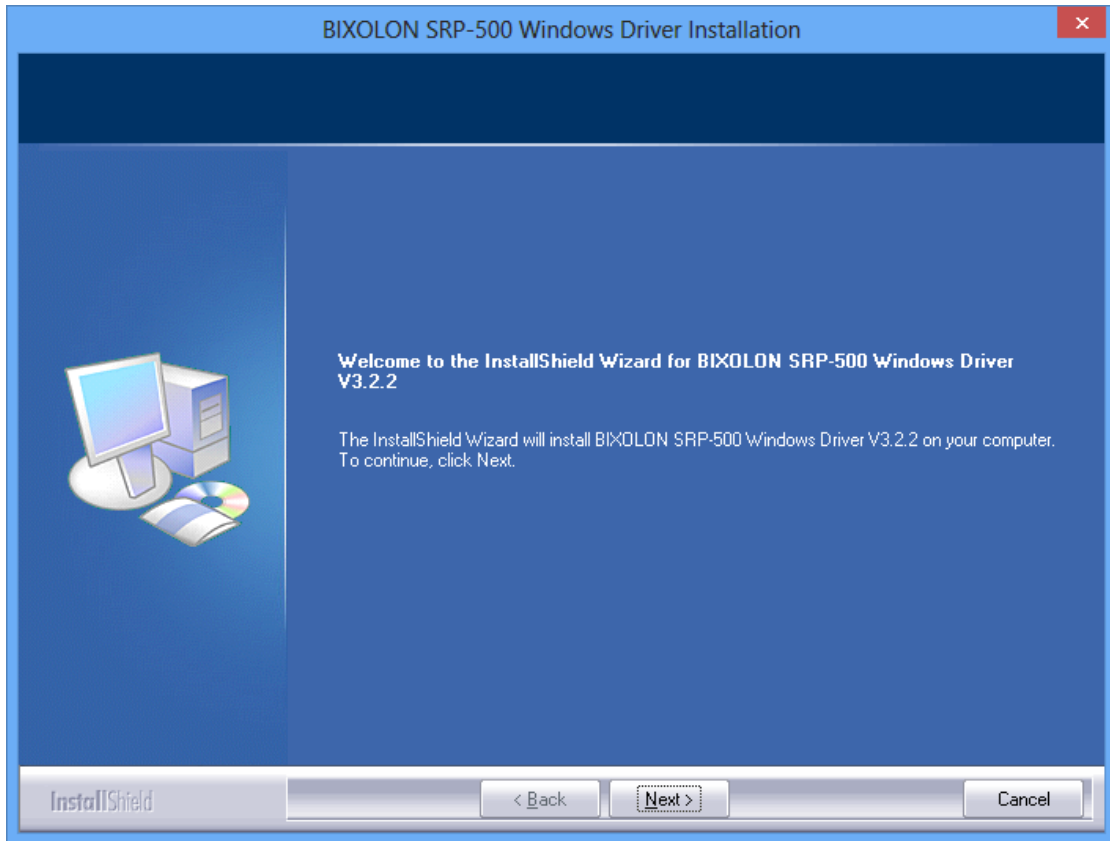


13) Proper installation of the driver is indicated if the test page is printed normally.

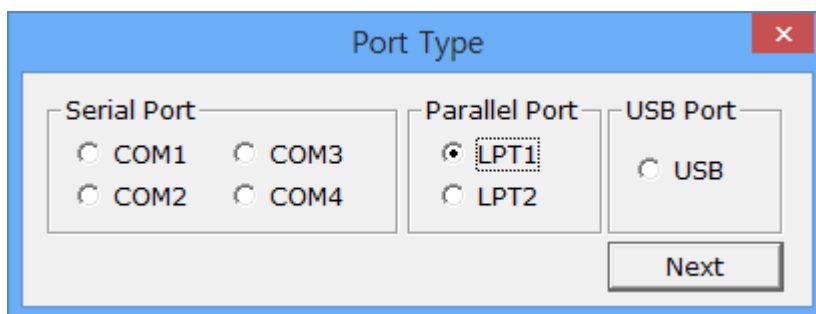
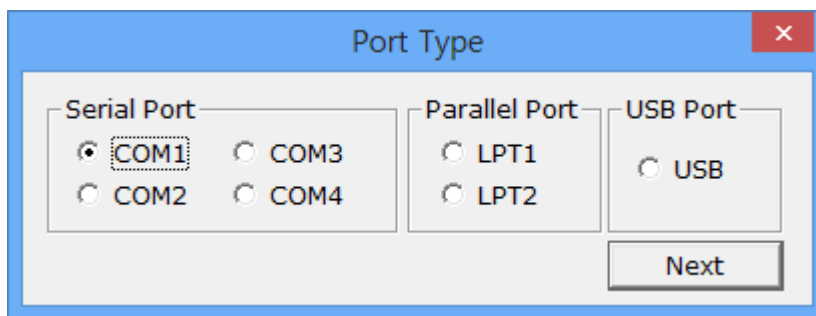
4-2 Installing on Windows VISTA / Server 2008 / 7 / 8

4-2-1 Via Serial Port or Parallel Port

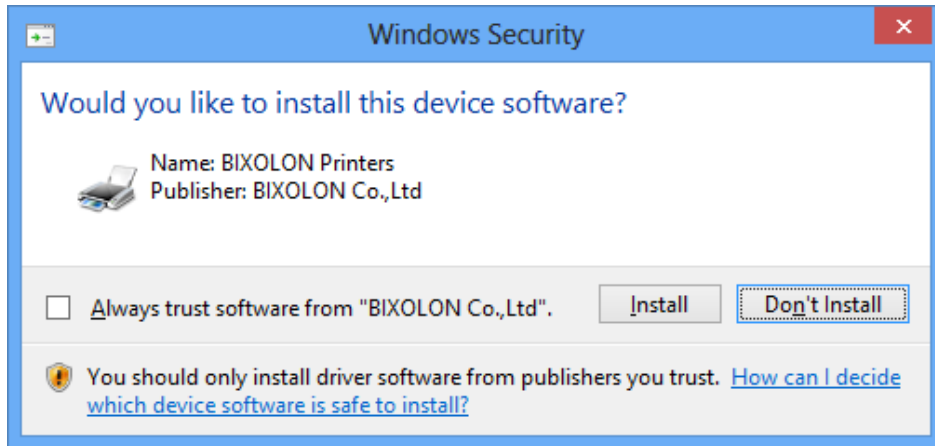
- 1) Double-click the Windows Driver installation file.
- 2) Click the “Next” button.



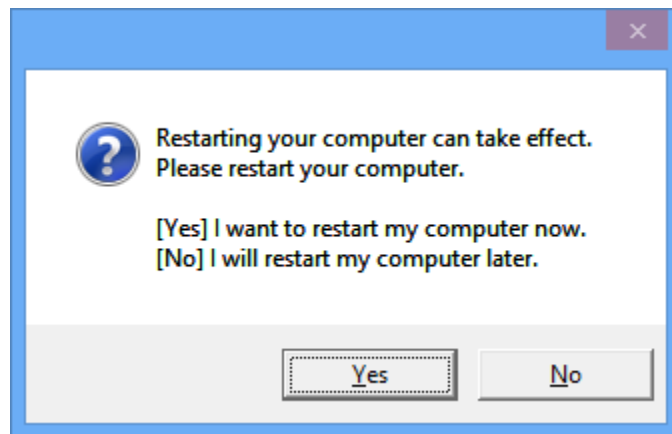
- 3) Select the COM or LPT (Which one you want to use) port to be used and click the “Next” button.



4) When the following message box appears, click the “Install” button.



5) Clicking the “Yes” button will reboot the PC.



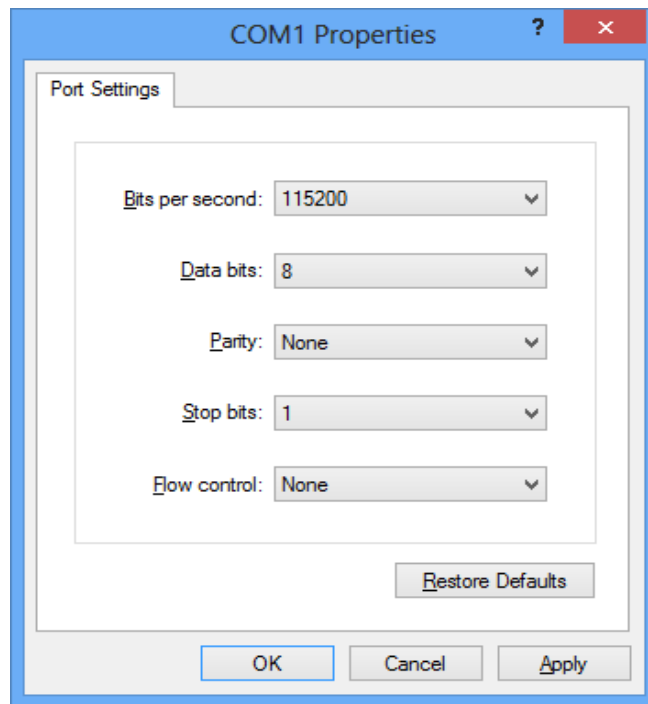
6) Open the printer properties window in the Windows OS.

※ Control Panel – Hardware and Sound – Device and Printers.

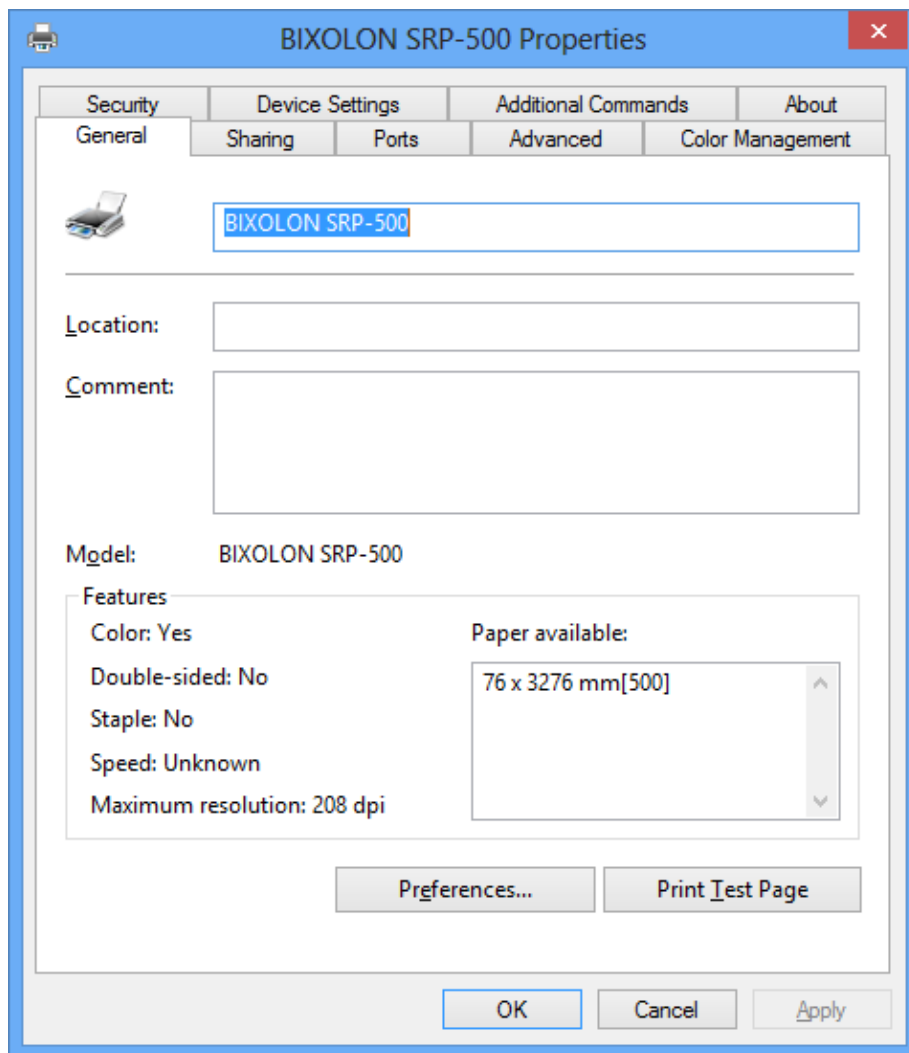
7) If you select a serial port, click the “Configure Port...” button in the “Ports” tab.

8) If you select a serial port, match the communication settings to those of the printer.

(The communication settings of the printer can be performed by conducting a self-test.)



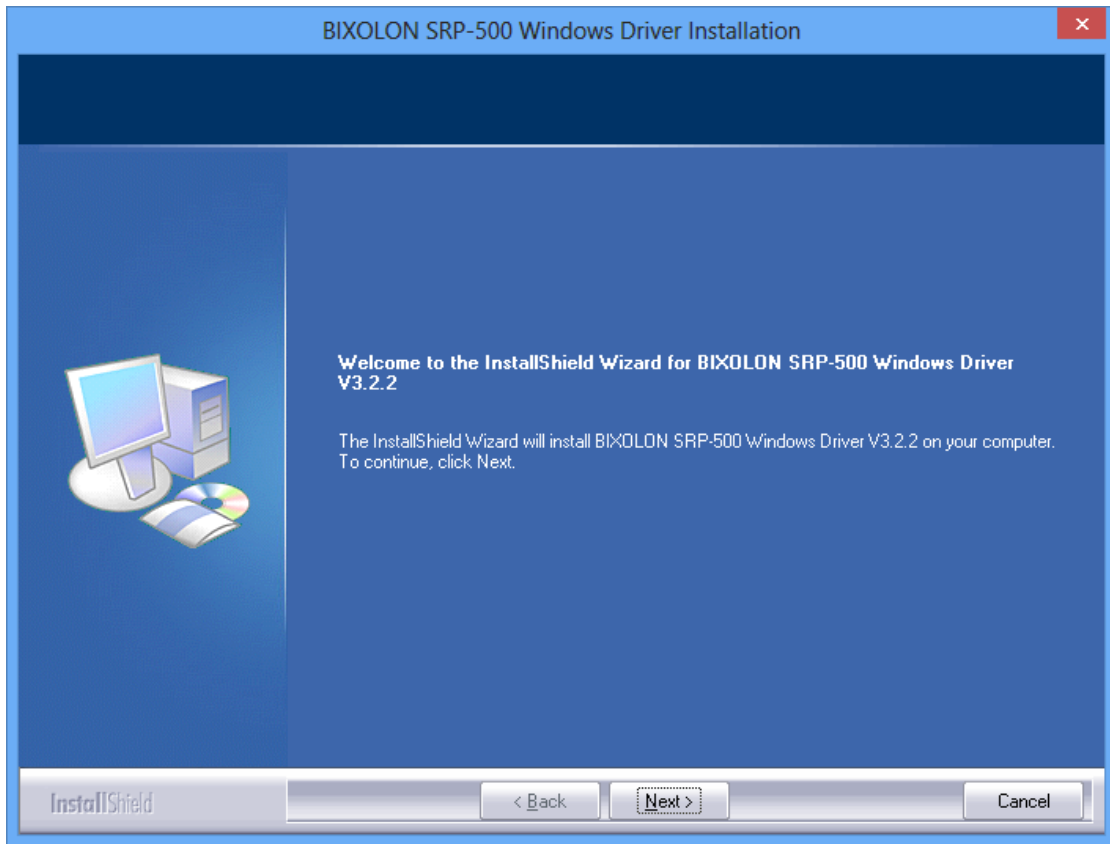
9) Click the "Print Test Page" button and check printing status.



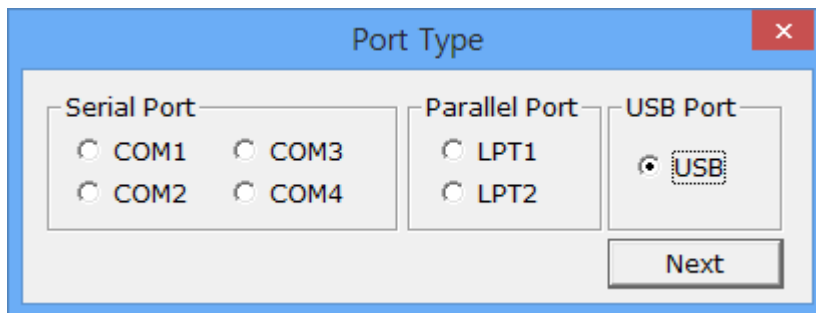
10) Proper installation of the driver is indicated if the test page is printed normally.

4-2-2 Via USB Port

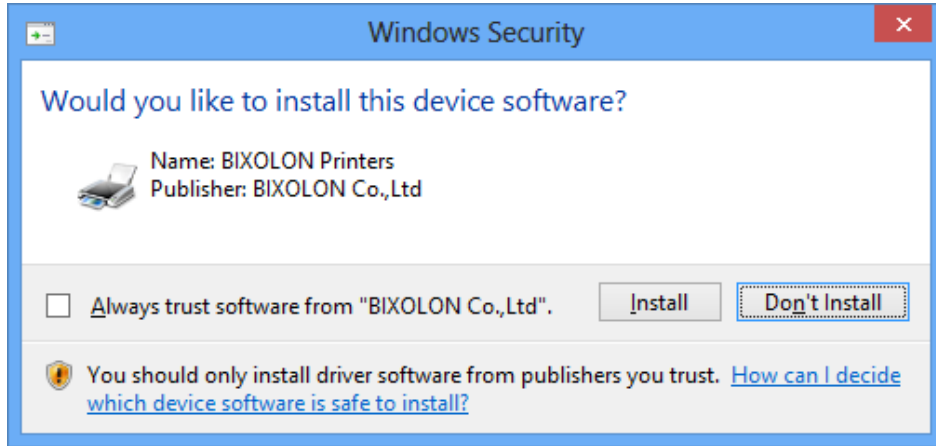
- 1) Double-click the Windows Driver installation file.
- 2) Click the “Next” button.



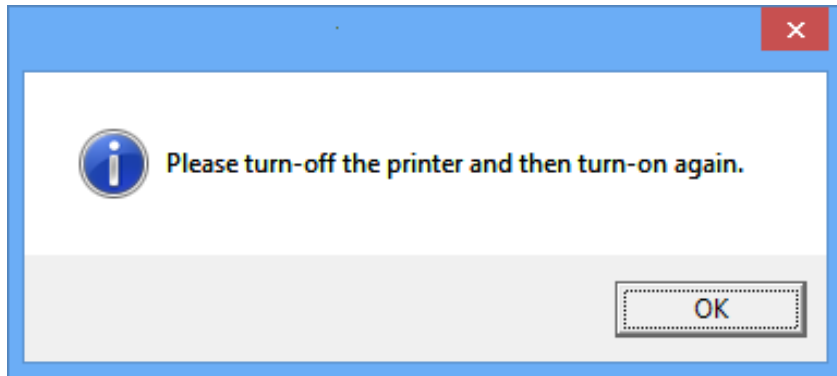
- 3) Select USB and click the “Next” button.



4) When the following message box appears, click the “Install” button.

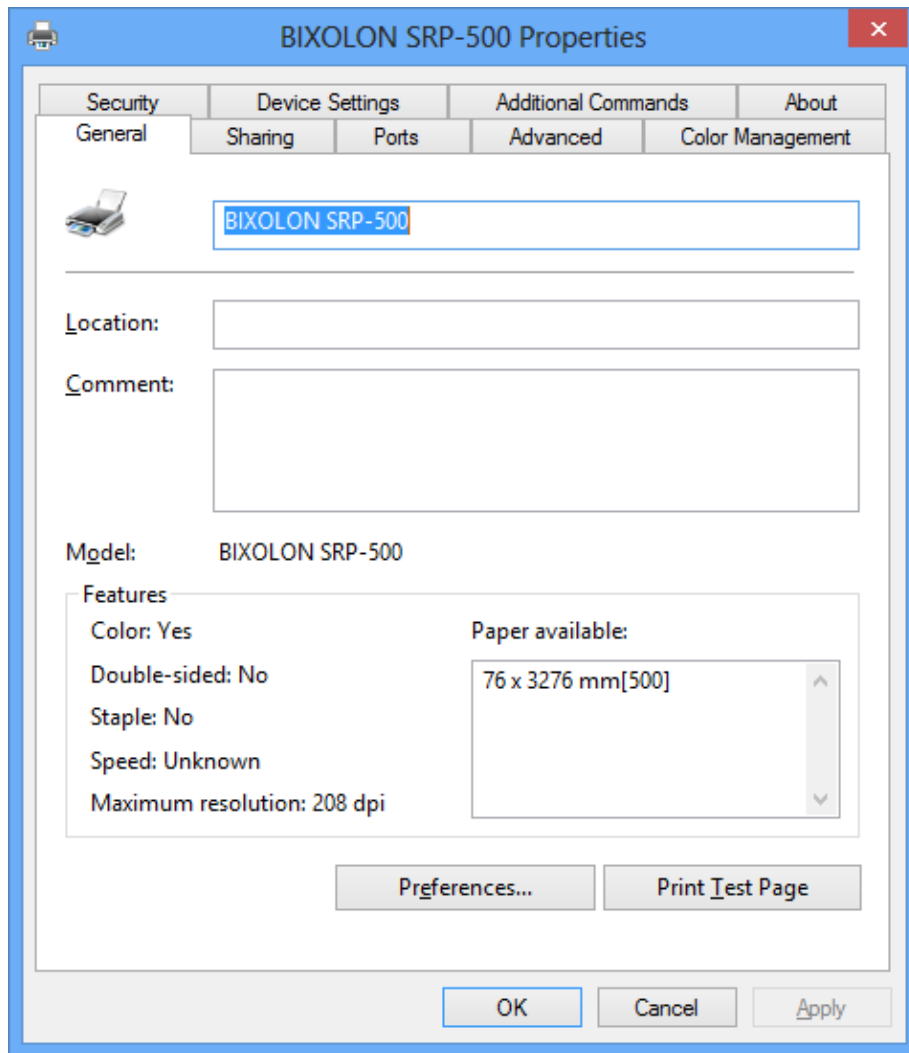


5) Click the “OK” button.



6) Turn off the printer and then turn on again. The printer driver will be installed automatically.

- 7) Open the printer properties window in the Windows OS.
 - ※ Control Panel – Hardware and Sound – Device and Printers.
- 8) Click the “Print Test Page” button and check printing status.



- 9) Proper installation of the driver is indicated if the test page is printed normally.

5. Detailed Windows Driver Settings

The following functions can be set in detail after the Windows Driver installation is complete.

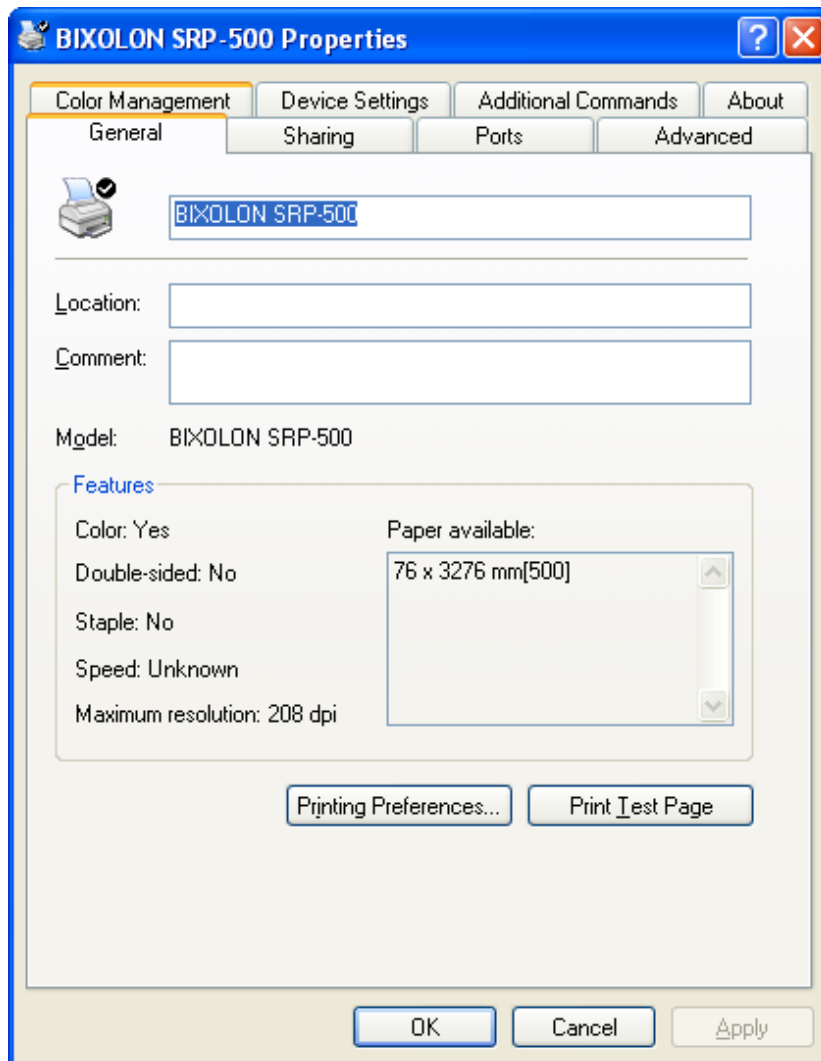
5-1 Paper Supply Method

The printer structure is such that the print head, which carries out printing, and the cutter, which cuts the printing paper, are separated. After printing, the location of the end section can be adjusted as follows.

- | | | |
|----------------------|---|-------------------------------------------------------------------------------------------------------------------|
| Automatically Select | : | Select the "Receipt[No Cut]" automatically. |
| Receipt[Partial Cut] | : | After printed text is transferred up to the cutter (auto cutter), a paper is cut by auto cutter. |
| Receipt[No Cut] | : | Printed text is transferred up to the cutter (manual cutter). |
| Receipt [No feed] | : | Printed text is transferred up to the next line only. (minimum transfer: 0x0A). |
| Form[Partial Cut] | : | For long print jobs, printed text is transferred and cut according to the Receipt option per selected paper size. |
| Form[Not Cut] | : | For long print jobs, printed text is transferred according to the Receipt option per selected paper size |

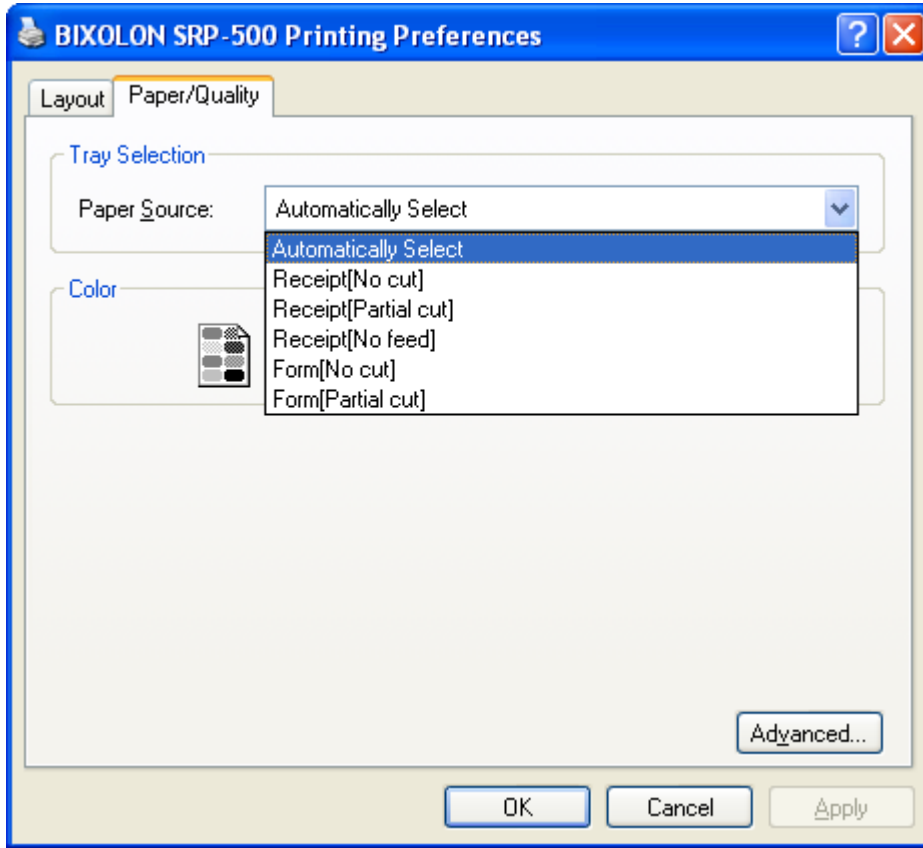
Detailed setting can be done as follows.

1) Open the printer properties window in the Windows OS.



2) Click the “Printing Preferences” button in the “General” tab.

3) Select the desired setting in the “Paper/Quality” tab.



5-2 Paper Size

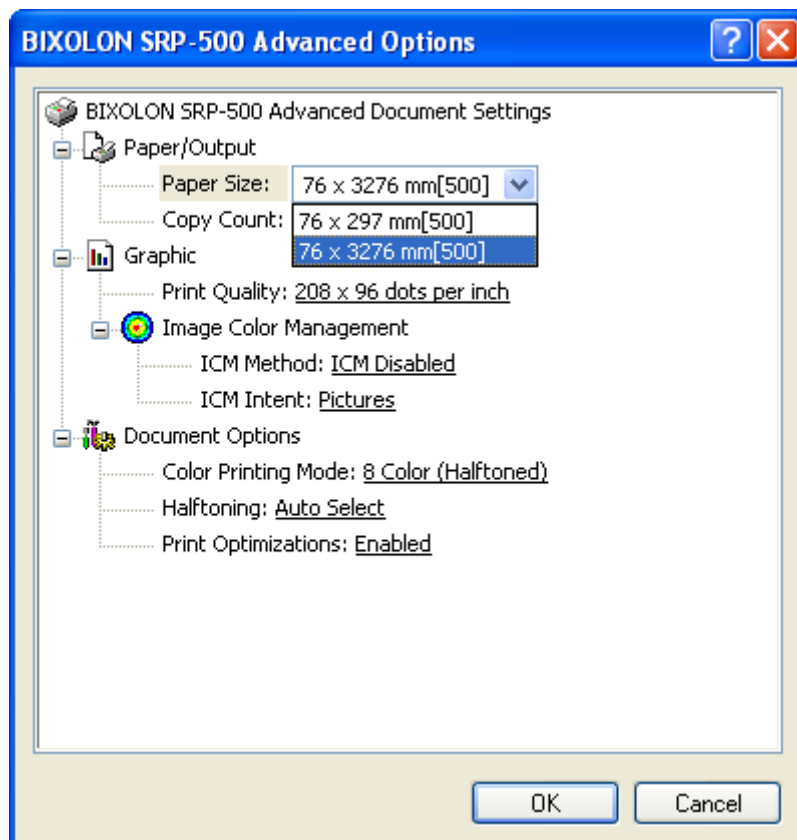
The paper sizes available in the Windows Driver are as follows.

76 × 297 mm[500]

76 × 3276 mm[500]

Detailed setting can be done as follows.

- 1) Open the printer properties window in the Windows OS.
- 2) Click the “Printing Preferences” button in the “General” tab.
- 3) Select the “Paper/Quality” tab, and click the “Advanced” button.
Select the desired setting.



5-3 Additional Commands

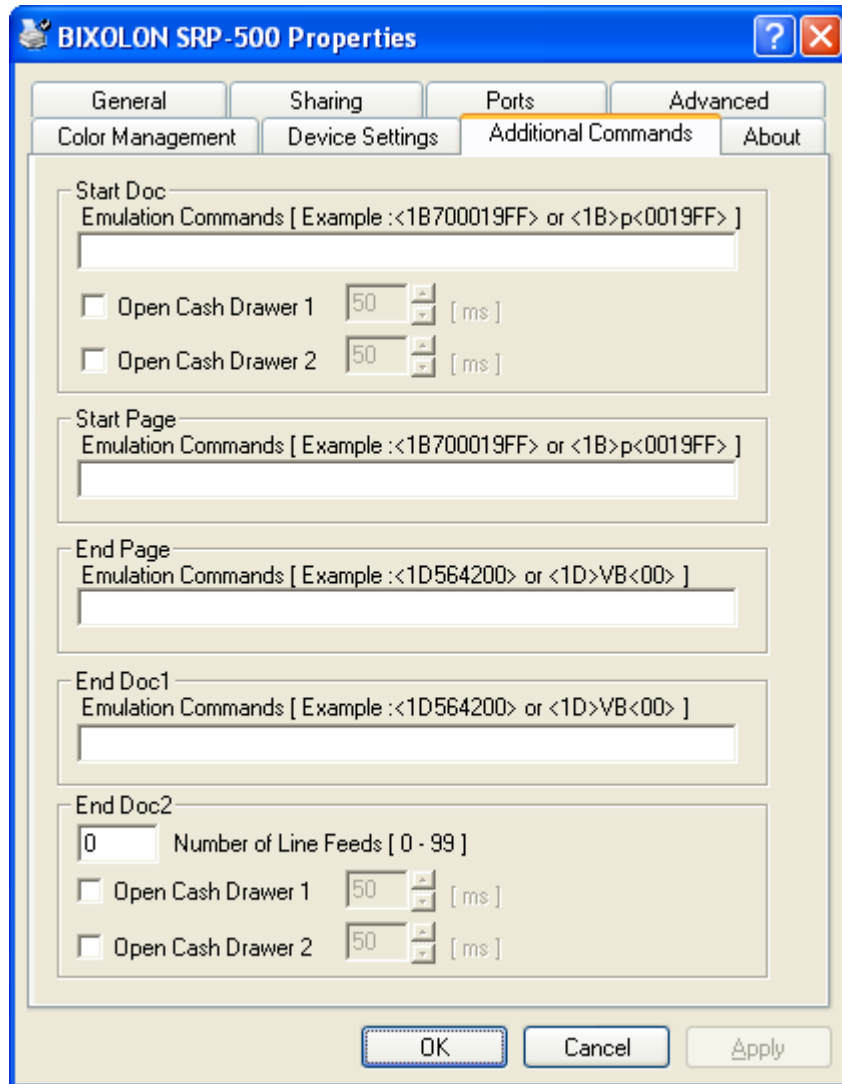
The Windows Driver serves to receive the content for print from an application and send it to the printer. The Additional Commands function allows for the addition of desired commands at the beginning or end of the print content sent to the printer.

The command functions available are as follows.

- Start Doc : Addition of command at the beginning of the document.
- Start Page : Addition of command at the beginning of the page.
- End Page : Addition of command at the end of the page.
- End Doc1 : Addition of command at the end of the document.
- End Doc2 : Addition of line feeding at the end of the document.

Detailed setting can be done as follows.

- 1) Open the printer properties window in the Windows OS.
- 2) Click the “Additional Commands” tab.



- 3) If the user wants to open a cash-drawer prior to printing, tick the button named as “Open Cash Drawer1” or “Open Cash Drawer2” in the “Start Doc” and then click the “OK” button.
- 4) If the user wants to open a cash-drawer at the end of printing, tick the button named as “Open Cash Drawer1” or “Open Cash Drawer2” in the “End Doc2” and then click the “OK” button.
- 5) If the user wants to feed three lines at the end of printing, enter “3” in the “EndDoc2” and click the “OK” button.
- 6) When downloading an image to the printer using the NV Image Tool, the image print command is FS p n m (Hex: 1C 70 m n).

For more information on the hexadecimals that can be entered in “Start Doc”, “Start Page”, “End Page” and “End Doc1”, refer to the Control Commands Manual.

6. Windows Driver Specifications

6-1 Fonts

This Windows driver supports various fonts in the following table. Printing using these fonts is faster than using Windows fonts provided by the operating system.

| Printer Fonts | Character Size (dot) | Sizes (point) |
|---------------|----------------------|---------------|
| Korean1x1 | Korean1x1(24x24) | 12 |
| Korean1x2 | Korean1x2(24x48) | 24 |
| Korean2x1 | Korean2x1(48x24) | 12 |
| Korean2x2 | Korean2x2(48x48) | 24 |

| Printer Fonts | Character Size (dot) | Sizes (point) |
|---------------|----------------------|---------------|
| FontA1x1 | FontA1x1(12x14) | 12 |
| FontA1x2 | FontA1x2(12x28) | 24 |
| FontA2x1 | FontA2x1(24x14) | 12 |
| FontA2x2 | FontA2x2(24x28) | 24 |
| FontB1x1 | FontB1x1(12x12) | 12 |
| FontB1x2 | FontB1x2(12x24) | 24 |
| FontB2x1 | FontB2x1(24x12) | 12 |
| FontB2x2 | FontB2x2(24x24) | 24 |

Printer Fonts are defined as follows.

- 1) FontA1x2
 - ANSI Character code support
 - Character size (dot): 12 x 28 (double height)
 - Sizes (point): 24
- 2) FontA1x2
 - Korean
 - Character size (dot): 24 x 48 (double height)
 - Sizes (point): 24

6-2 Special Functions

This Windows driver supports the special functions as shown in the following table. Select the "FontControl" character first and use the characters in the table to use the special functions. Take care as this function is not for printing general texts.

| Character | Special Function |
|-----------|--------------------------------------------------------|
| 5 | HT (0 x 0A) is output |
| 6 | LF (0 x 0A) is output |
| 7 | CR (0 x 0A) is output |
| a | Open Drawer 2 (50ms drive pulse width) |
| b | Open Drawer 2 (100ms drive pulse width) |
| c | Open Drawer 2 (150ms drive pulse width) |
| d | Open Drawer 2 (200ms drive pulse width) |
| e | Open Drawer 2 (250ms drive pulse width) |
| f | Open Drawer 2 (50ms drive pulse width) without feeding |
| g | Cut Receipt (partial cut) without paper feeding |
| w | Text is aligned left |
| x | Text is centered |
| y | Text is aligned right |
| A | Open Drawer 1 (50ms drive pulse width) |
| B | Open Drawer 1 (100ms drive pulse width) |
| C | Open Drawer 1 (150ms drive pulse width) |
| D | Open Drawer 1 (200ms drive pulse width) |
| E | Open Drawer 1 (250ms drive pulse width) |
| F | Open Drawer 1 (50ms drive pulse width) without feeding |
| P | Cut Receipt (partial cut) |
| @ | Printing the first NV bit image |
| # | Printing the second NV bit image |
| \$ | Printing the third NV bit image |
| % | Printing the fourth NV bit image |
| & | Printing the fifth NV bit image |

1) Sample Use

If the "FontControl" font is selected and 6 is entered, the "LF" (Line Feeding) operation is activated.

(does not entail the printing of the character "6")

2) "FontControl" Font Function

| Printer Font for Special Function | Function | Size (point) |
|-----------------------------------|------------------------------------------------------------------------------------------------------------------------------------------------------------------------------------|--------------|
| FontControl | Open Drawer 1/2 Cut receipt Cut receipt(without paper feeding) Justification (Left/Center/Right) Output HT, Output LF, Output CR Barcode Printing Print NV Image | 12 |

6-3 Barcodes

The Windows Driver supports the barcodes indicated below. This function is available when entering barcode data after selecting “Printer Font Name”. In addition, the “FontControl” font can be used to add HRI characters.

| Printer Font Name | Size | Supported Characters |
|-------------------|-----------------|------------------------------------------------------------|
| Codabar | 19/37.5/56.5/75 | Numeric: 0~9 Symbols: \$, +, -, ., /, : Letters: A~D |
| Code39 | 19/37.5/56.5/75 | Numeric: 0~9 Symbols: \$, +, -, ., / Letters: A~Z |
| JAN13(EAN) | 19/37.5/56.5/75 | Numeric: 0~9 |
| JAN8(EAN) | 19/37.5/56.5/75 | Numeric: 0~9 |
| ITF | 19/37.5/56.5/75 | Numeric: 0~9 |
| UPC-A | 19/37.5/56.5/75 | Numeric: 0~9 |
| UPC-E | 19/37.5/56.5/75 | Numeric: 0~9 |
| Code93 | 19/37.5/56.5/75 | ASCII CODE: 0~127 |
| Code128 | 19/37.5/56.5/75 | ASCII CODE: 0~127 |

1) Sample Use

Select “Code39” and Size “19”, and then enter “1234”.
 The barcode corresponding to “1234” is printed.

2) When Using Code128

Select “Code128” and Size “19”, and then enter “{B1234”.
 The barcode corresponding to “1234” is printed.

When using “Code128”, characters, such as “{A”, “{B”, “{C”, must be included before the input data.

7. Use of Windows Driver

7-1 Use of Visual Basic

This section contains example codes to control the printer (BIXOLON SRP-500) using Windows driver with Visual Basic.

7-1-1 Windows Driver Selection

The following example code explains how to select the “BIXOLON SRP-500” Windows driver.

```
For Each prnPrinter In Printers
If prnPrinter.DeviceName = "BIXOLON SRP-500" Then
Set Printer = prnPrinter
Exit For
End If
Next
```

7-1-2 Test Printing

The following code is an example of the printing of Arial Test via the Windows font, and FontA1x1Test via the printer font.

```
'Print in Windows font
Printer.FontSize = 12
Printer.FontName = "Arial"
Printer.Print "Arial Test"

'Print in printer font
Printer.FontSize = 12
Printer.FontName = "Font1x1"
Printer.Print "Font1x1 Test"

Printer.EndDoc
```

7-1-3 Barcode Printing

The following code is an example of the printing of the JAN8 (EAN) barcode.

```
'Print Bar Code.
Printer.FontSize = 19

Printer.FontName = "JAN8 (EAN)"
Printer.Print "1234567"

Printer.EndDoc
```

7-2 Use of Wordpad

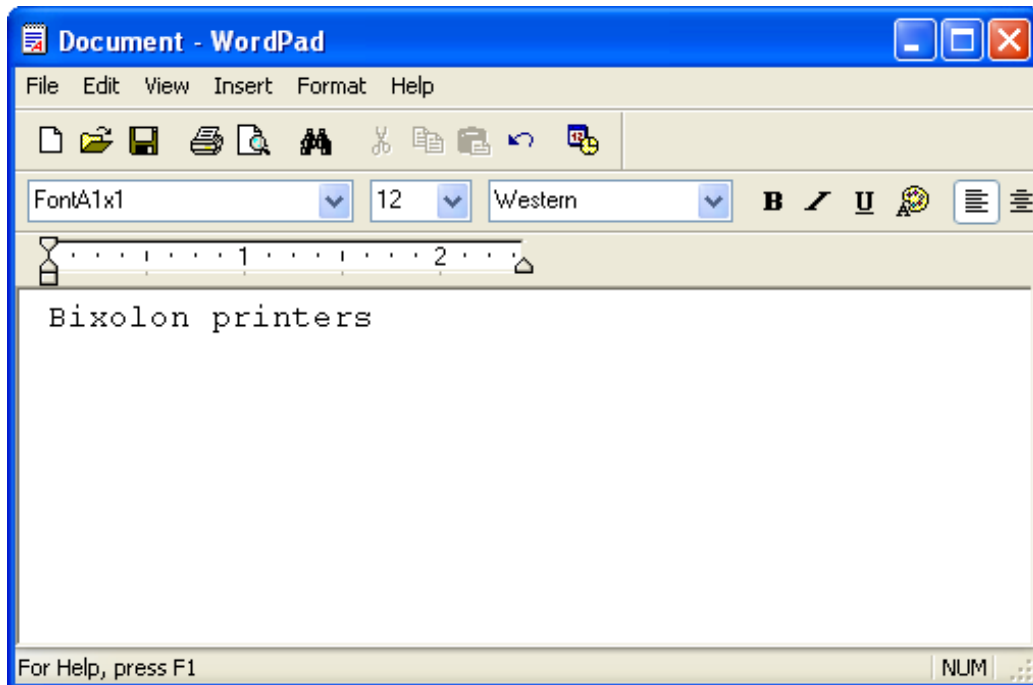
7-2-1 Wordpad Environment Settings

Launch WordPad, set the printing related options as follows, and test the printer with WordPad.

- Select Printer
Select "Print" from the "File" menu, and select the printer (BIXOLON SRP-500).
- Set paper size, orientation, margin, etc.
Select the "Page Setting" from "File" menu, and set paper size, orientation, and margin.

7-2-2 Text Printing

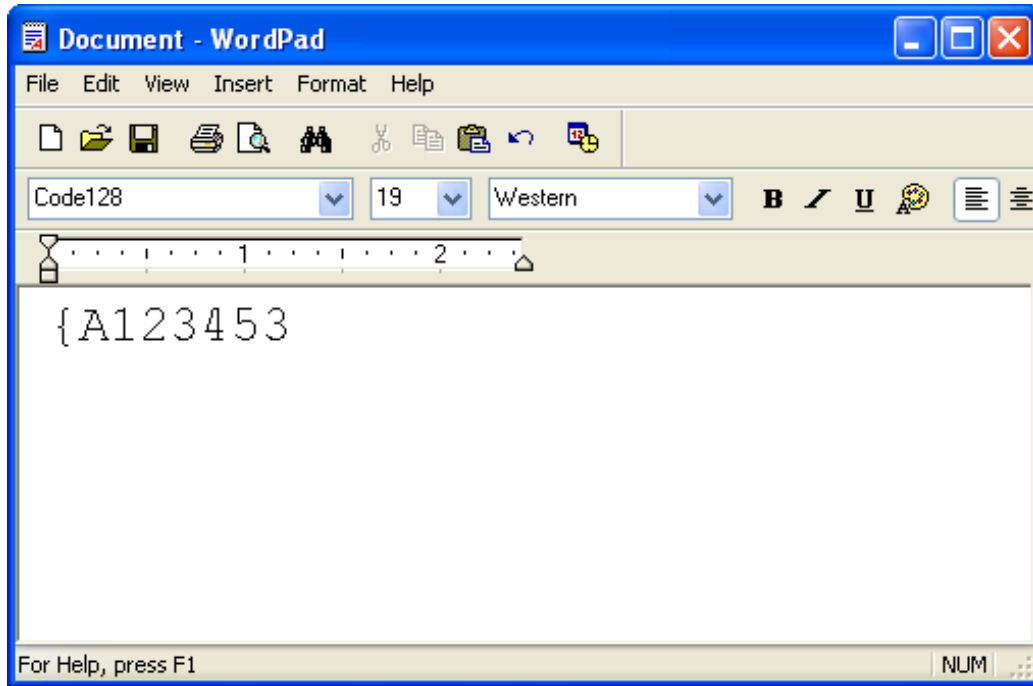
Print the text from WordPad using the Windows driver of the printer.



- 1) Select the desired font from the Font menu (FontA 1x1).
- 2) Select the desired font size (12).
- 3) Enter the text to be printed in Wordpad.
- 4) Click the Print button in the toolbar to print.

7-2-3 Barcode Printing

Use the Windows Driver of the printer to print the barcode.



- 1) Select the desired barcode from the Font menu (Code128).
- 2) Select the desired font size (19).
- 3) Enter "{A123435" in Wordpad.
- 4) Click the Print button in the toolbar to print.