

Heater assembly for Color and Day/ Night domes

Thank you for choosing the heater assembly for the 3-Axis Vandal resistant domes. Before attempting to connect or operate this product, please read and follow these instructions.

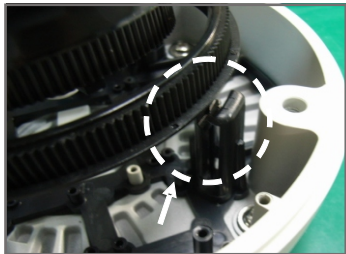
General

This heater assembly is designed to provide heat to the new 3-Axis Vandal resistant domes. The manual is designed to assist in the fitting of the heater assembly.

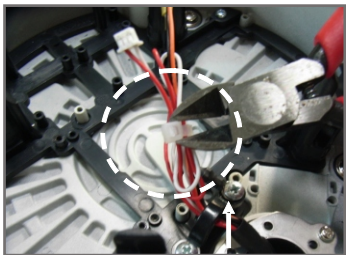
Contents of Package

1. Heater PCB
2. Heater
3. Extension cable (for Type 3 only)
4. User manual
5. Screw

Installation



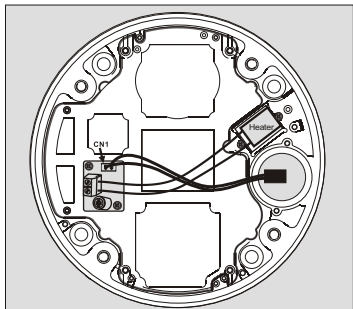
1. Remove support bracket



2. Remove cable tie of the heater power cable (Type 1, Type 2 only)

3. Install the Heater PCB kit

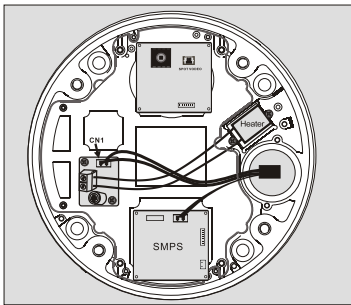
<TYPE-1>



Insert heater power connector to heater PCB(CN1).
Attach the adhesive end of the heater to the housing.

Model.: V661V-312N, V661V-922N, V661D-312N

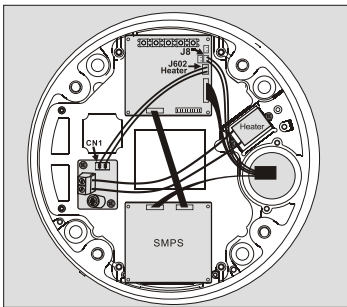
<TYPE-2>



Insert heater power connector to heater PCB(CN1).
Attach the adhesive end of the heater to the housing.

Model.: V661V-312D, V661V-922D, V661V-312IR

<TYPE-3>



Insert heater extension cable to connect
heater PCB(CN1) to control PCB(J602 Heater).
Attach the adhesive end of the heater to the housing.

Model.: V662V-312D, V662V-922D

Specification

Power source	Power supply 24VAC /12VDC
Power consumption	Power consumption 20W Max
Operating Temperature	Heater ON : at 41°F (5°C)
	Heater OFF : at 59°F (15°C)