



# **ENXTV-X2**

## **External TV Tuner PRO**

(Remote controller included)

**ENXTV Series**  
**User's Guide**

# ENXTV-X2 User's Guide

---

## User's Notice

No part of this manual, including the products and software described in it, may be reproduced, transmitted, transcribed, stored in a retrieval system, or translated into any language in any form or by any means, except documentation kept by the purchaser for backup purposes, without the express written permission of Encore Electronics Inc.

ENCORE ELECTRONICS INC. PROVIDES THIS MANUAL "AS IS" WITHOUT WARRANTY OF ANY KIND, EITHER EXPRESS OR IMPLIED, INCLUDING BUT NOT LIMITED TO THE IMPLIED WARRANTIES OR CONDITIONS OF MERCHANTABILITY OR FITNESS FOR A PARTICULAR PURPOSE. IN NO EVENT SHALL ENCORE ELECTRONICS INC., ITS DIRECTORS, OFFICERS, EMPLOYEES OR AGENTS BE LIABLE FOR ANY INDIRECT, SPECIAL, INCIDENTAL, OR CONSEQUENTIAL DAMAGES (INCLUDING DAMAGES FOR LOSS OF PROFITS, LOSS OF BUSINESS, LOSS OF USE OR DATA, INTERRUPTION OF BUSINESS AND THE LINK), EVEN IF ENCORE ELECTRONICS HAS BEEN ADVISED OF THE POSSIBILITY OF SUCH DAMAGES ARISING FROM ANY DEFECT OR ERROR IN THIS MANUAL OR PRODUCT.

Product warranty or service will not be extended if: (1) the product is repaired, modified or altered, unless such repair, modification or alteration is authorized in writing by ENCORE ELECTRONICS INC.; or (2) the serial number of the product is defaced or missing.

Products and corporate names appearing in this manual may or may not be registered trademarks or copyrights of their respective companies, and are used only for identification or explanation and to the owners' benefit, without intent infringe.

- Windows, MS-DOS, and DirectX are registered trademarks of Microsoft Corporation.
- Adobe and Acrobat are registered trademarks of Adobe Systems Incorporated.

The product name and revision number are both printed on the product itself. Manual revisions are released for each product design represented by the digit before and after the period of the manual revision number. Manual updates are represented by the third digit in the manual revision number.

SPECIFICATIONS AND INFORMATION CONTAINED IN THIS MANUAL ARE FURNISHED FOR INFORMATION USE ONLY, AND ARE SUBJECT TO CHANGE AT ANY TIME WITHOUT NOTICE, AND SHOULD NOT BE CONSTRUED AS A COMMITMENT BY ENCORE ELECTRONICS INC. ENCORE ELECTRONICS INC. ASSUMES NO RESPONSIBILITY OR LIABILITY FOR ANY ERRORS OR INACCURACIES THAT MAY APPEAR IN THIS MANUAL, INCLUDING THE PRODUCTS AND SOFTWARE DESCRIBED IN IT. **Encore Electronics Inc. Copyright ©2008. All Rights Reserved.**

# ENXTV-X2 User's Guide

---

## Contents:

Chapter 1: Introduction	4
1.1 Package Contents .....	4
1.2 System Requirements.....	4
1.3 Main Features.....	5
Chapter 2: Getting Started	6
2.1 Rear panel connectors .....	6
2.2 Right Side panel connectors.....	6
2.3 Wire connection .....	7
2.4 External Video / Audio input connection.....	7
Chapter 3: Use the ENXTV-X2	8
3.1 PC side VGA resolution setting .....	8
Chapter 4: Using the Remote Control	10
4.1 Installing Batteries .....	10
4.2 Remote controller functions.....	10
4.3 How to use MENU.....	11
4.4 OSD display MENU Setting.....	12
Chapter 5: Supporting Center:	16

# Chapter 1: Introduction

The ENXTV-X2 is an excellent solution in combining a computer and a TV system without the need for screw driver or software driver. Enhance your computer to a home theater quality system adding a high quality TV receiver, just plug-in cables and power adapter.

The ENXTV-X2 provides high quality, high resolution of up to 1680x1050. Watch your favorite TV program while using your computer at the same time or watch your favorite TV program even your computer is turned-off<sup>12</sup>.

<sup>12</sup> *If the speaker cable is hooked up directly to the computer's the PC sound card the audio will not work. The audio speaker cable should be connected to the ENXTV-X2Audio-Out port when watching TV while the computer is turned off.*

## 1.1 Package Contents

Please confirm the following parts are included when open the package. If not, please contact your distributor or dealer.

- ENXTV-X2 External TV Tuner
- IR Remote Control
- 2 pc. AAA Batteries (for remote controller)
- Switching AC adapter
- VGA-In loop back cable (for PIP mode)
- 3.5 mm stereo Audio cable
- User's Manual

## 1.2 System Requirements

- Display unit CRT / LCD with Standard VGA connector (D-Sub 15 pin). A computer is necessary when in PIP mode.
- RF antenna signal or CATV signal.
- Independent of OS (operating system), no software driver installation or HDD space is needed.

## 1.3 Main Features

**Resolution up to WSXGA:** 1680x1050 Resolution. The most optimized VIDEO display setting is 1024x768 with the vertical refresh rate at 75Hz gives the best performance In a generic 15 inch LCD monitor, while in 20 inch LCD Wide monitor users can set up to 1680x1050

**PIP Function supports sub-Video display in PC:** In addition to a full screen display, the PIP feature allow the user to watch TV programs while using the computer, the PIP sub video Window can be move around to the any places of the monitor screen.

**16 Channels TV wall for program preview:** The TV program can be previewed with 4 ,9 or 16 display Windows, and can be easily manipulated by a function key or remote control key

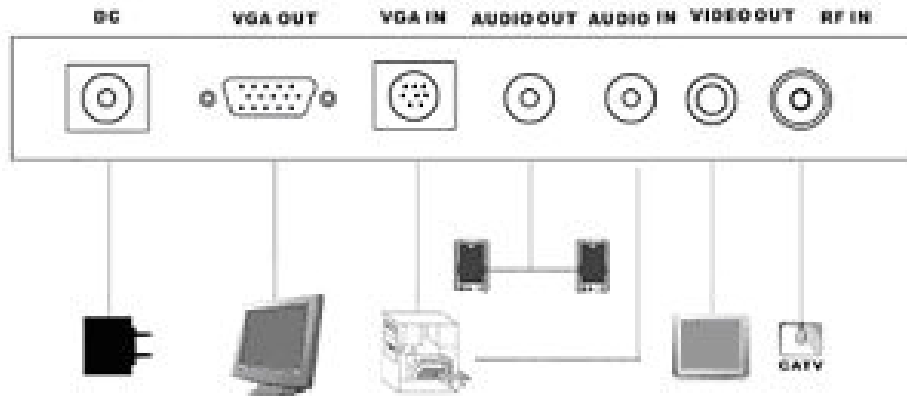
**More sharper and stunning pictures:** Adaptive 3D noise reduction filter. Enhanced motion adaptive 3D de-interlacing and adaptive Luma/Chroma enhanced engine.

**Multiple input/output source:** Supported connectors include (RCA) input and output 、 S-VHS input 、 3.5 mm stereo audio input and output 、 convert for VCR 、 DVD connection.

# Chapter 2: Getting Started

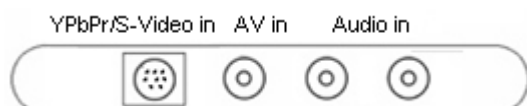
## 2.1 Rear panel connectors

ENXTV-X2 cable connection is easy. The most typical cable connections are shown in the picture diagram below. Make sure the power cable is not connected when hooking these cables in.



CONNECTOR	TYPE	DESCRIPTION
DC In	5mm, INT+, EXT-	AC adapter, power in (5V, 2 A)
VGA Out	15 pin D-Sub connector	ENXTV-X2 main video output. Connects to CRT/LCD Monitor
VGA In	8pin Mini DIN connector	VGA-In loop back cable ◦ The other end of this cable connects to the PC's VGA D-sub 15 pin connector.
Audio Out	3.5mm stereo connector	Audio out connects to the speaker.
Audio In	3.5mm stereo connector	Audio In Connect to PC sound system ( <b>Audio-out</b> of sound card).
Video Out	RCA Jack	ENXTV-X2 Video output. Can be used to connect to Video input of display unit ◦
RF	TV antenna connector	TV or CATV signal-in connector

## 2.2 Right Side Panel Port Connectors



CONNECTOR	TYPE	DESCRIPTION
S-Video In	7-pin Min Din connector	S-VHS type external video input source. Can be used for DVD, VCR or Camcorder
Video In	RCA Jack	External composite video input source, can be connected to DVD, VCR or Camcorder. °
Audio In (L/R)	RCA Audio jack	RCA audio jack used for external audio input source.

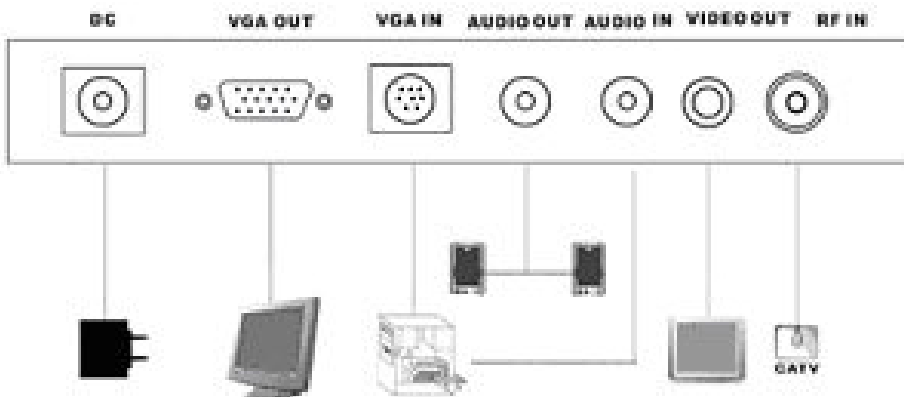
## 2.3 Cable Connections

There is no sequential requirement which cable should be connected first except AC adapter, it is strongly recommended connecting the AC adapter as the last step when finish all the connection.

\*For Macintosh users: The connector or cable requirements may be different, the ENXTV-X2 package does not contain such accessories. Owners may need to get it from the Macintosh store.

## 2.4 External Audio/Video input connection

When connecting the ENXTV-X2 with the external A/V source such as DVD, VCR or Camcorder and to enjoy the high quality visual / sound entertainment, please turn off the power and make the correct connection as the diagram indicated below.



# Chapter 3: Using the ENXTV-X2

This chapter shows how to use the ENXTV-X2.

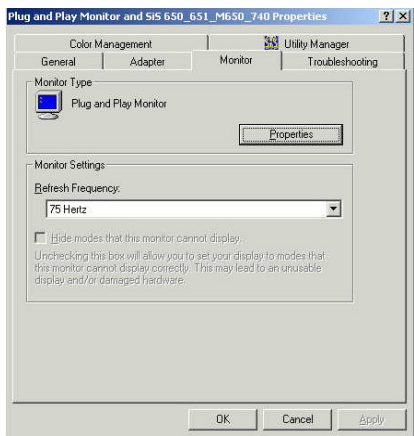
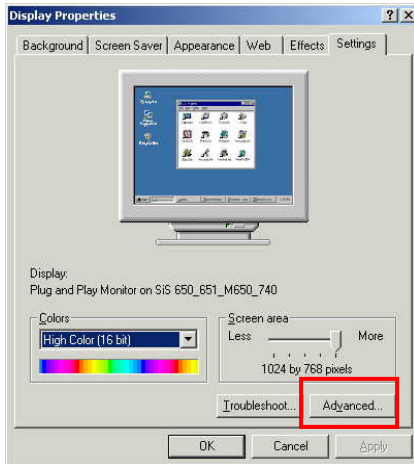
## 3.1 PC side VGA resolution setting

ENXTV-X2 can be used independent of PC system for a full screen display. In addition to the full screen display, when it is connected in conjunction with the Computer system, the PIP sub video Window can also be displayed at the top of PC monitor screen to let the user watch TV while using the computer at the same time, or just enjoy a full screen TV viewing..

When the ENXTV-X2 is use as a standalone TV box (computer CPU is turned off), it is completely independent with the computer's VGA or monitor screen settings. Resolution and other adjustments depend on the monitor or the ENXTV-X2 settings.

While in PIP mode (computer is turned on and in PIP mode), in order to have the optimized resolution and performance, we recommend setting the computer VGA in XGA mode (1024x768) and monitor's refresh rate at 75Hz. Below, illustrates the computer VGA settings.





1. In windows system, the VGA resolution setting page can be invoked by a right click on the mouse when it is pointed at an empty monitor screen area.
2. When the “Display properties” page is shown, select the recommended value 1024x768.
3. Click on the “Advanced” button, to select the monitor refresh rate, the recommended vale is 75Hz
4. Click on OK to close the property page.
5. Windows system will change the display mode to your setting and ask whether to use this display mode or not, please click on OK to confirm the setting.
6. In Windows ME/95/98, the changes requires al reboot for the new setting to take effect.

# Chapter 4: Using the Remote Control

The included Infra Red Remote control allows you to operate ENXTV-X2 remotely, such as turning your TV on/off, changing channels, adjust volume, etc. Aim the front of the Remote Control at the Remote Control Receiver and press the control buttons as you would on the infrared rays receiver.

## 4.1 Installing Batteries



Open the back cover of remote controller and put in two pieces AAA batteries (alkaline battery recommended).

## 4.2 Remote controller functions



**Power:** power on/off control.

**MUTE:** Volume mute or resume.

**Numbers:** Program number select

**TV/AV:** Source select.

**PC/TV:** Switch to select PIP mode or full screen TV mode.

**CH+:** Channel Up.

**CH-:** Channel Down.

**VOL+:** Volume Up.

**VOL-:** Volume Down.

**MENU:** When in Full Screen Mode, this key is use for settings.

When in PIP Mode, this is use to move the PIP screen in conjunction with the CH+/- keys to move PIP screen high and low, and with the VOL +/- keys to move the PIP screen right and left

**EXIT:** Exit form current Menu setting.

**PIP:** Enter into PIP mode.

**MODE:** When in PIP Mode: MODE key is use to change the PIP screen display size. When in Full Screen Mode: MODE key is use to change the ENXTV-X2 resolution settings. Example: 800x600x85 Hz to 1024x768 60Hz, 1280X1024Hz.

**MULTI-DISPLAY:** Multi-picture display. Displays up to 16 video Windows.

**SKIP:** Skip / No skip current TV channel.

**SLEEP:** Set to Sleep timer and Off Sleep.

**SYS:** double click to return default setting

**OSD:** On Screen Display

## 4.3 How to use the Menu

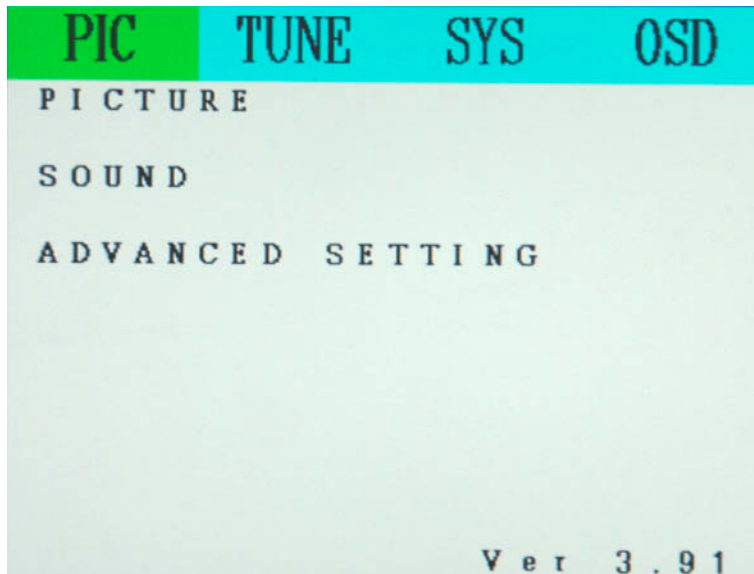
In this section the ENXTV-X2 Main Menu and its operations will be discussed here. Press the MENU button from the remote control to get to this screen (TV mode must be in Full Screen Mode)

Use the **CH+/CH-** keys to move the cursor to the desired item (Left and Right), once the desired selection is highlighted click **MENU** key to select it. Use the **VOL+/VOL-** keys move the highlights down to every sub menus and use MENU key to select.

PIC	TUNE	SYS	OSD
CURRENT	CH		1 2 3
EXCHANGE	CH		1 2 3
EXCHANGE	SAVE		NO
SKIP			ON
FINE-TUNING		47.71	MHz
AUTO SCAN		47.71	MHz
MANUAL SCAN			← →

The **EXIT** key on remote controller returns to previous menu setting page or when in the main menu screen this key will exit from the main menu screen. If there is no activity within 5 seconds the OSD Menu display will automatically exit out.

## 4.4 OSD Display MENU Settings

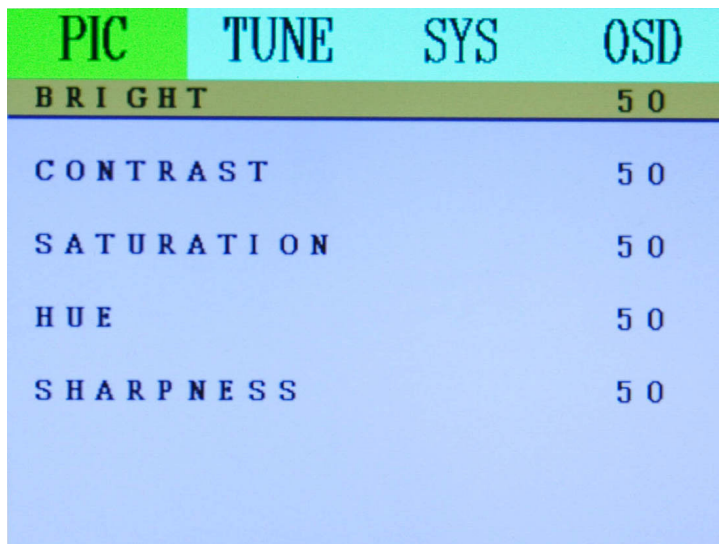


### PIC

PICTURE

SOUND

ADVANCED SETTING



### PICTURE

**BRIGHT:** Sets for screen brightness

**CONTRAST:** Sets for screen contrast

**SATURATION:** Sets for saturation

**HUE:** Sets for Color Hue

**SHARPNESS:** Sets for sharpness

PIC	TUNE	SYS	OSD
VOLUME			29
MUTE			OFF
BALANCE			50

## SOUND

**VOLUME:** To adjust Audio Out volume

**MUTE:** Audio Out volume mute

**BALANCE:** To adjust Audio Left or right track Out volume

PIC	TUNE	SYS	OSD
NOISE REDUCTION			OFF
BLACK LEVEL			OFF
MULTI-DISPLAY SET			9
PIP MODE SET			1 / 9
PS-GAME OPTION			OFF

## ADVANCED SETTING

**NOISE REDUCTION:** 3 degrees adjust image noise reduction

**BLACK LEVEL:** 2 degrees adjust image black level

**CHANNEL SURF:** 4,9,16 video division of TV wall mode

**PIP MODE SET:** 4,9,16 video division of PIP mode

**PS-GAME:** 2 status about support PS2 game. If "ON", you can get well quality image when playing PS2 game.

PIC	TUNE	SYS	OSD
CURRENT	CH		1 2 3
EXCHANGE	CH		1 2 3
EXCHANGE	SAVE		NO
SKIP			ON
FINE-TUNING		47.71	MHz
AUTO SCAN		47.71	MHz
MANUAL SCAN			← →

## TUNE

**CURRENT CH:** Display current TV channel

**EXCHANGE CH:** Change the current channels sequence list

**EXCHANGE SAVE:** Save the adjusted channels sequence list

**SKIP:** Skip/no skip current TV channel

**FINE TUNING:** Adjust current TV signal quality

**AUTO SCAN:** Auto process of scanning TV signal

**MANUAL SCAN:** manual process of scanning TV signal

PIC	TUNE	SYS	OSD
TV	SYSTEM		PALN
BLUE	SCREEN		ON
VIDEO	SOURCE		TV
DISPLAY	SCALE		4:3
RESOLUTION	1024X768		75
DISPLAY	TYPE		CRT
RESET			DEFAULT

## SYS

**TVSYSTEM:** PAL system standard setting

**BLUESCREEN:** Background color is blue when no signal input

**VIDEOSOURCE:** TV\AV\SV input video source selection

**DISPLAY SCALE:** Switch to wide image resolution.

**RESOLUTION:** Output image resolution selection

**DISPLAY TYPE:** Support CRT OR LCD output

**RESET:** Comeback factory default setting

PIC	TUNE	SYS	OSD
LANGUAGE		ENGLISH	
H POSITION		56	
V POSITION		66	
BACK COLOR		7	
TRANSPARENCY		0	
OSD TIMEOUT		ALWAYS	

## OSD

**LANGUAGE:** OSD menu language selection: Chinese and English

**H POSITION:** Adjust OSD Horizontal position

**V POSITION:** Adjust OSD vertical position

**BACK COLOR:** Change the OSD back color

**TRANSPARENCY:** Adjust OSD background transparency

**OSD TIMEOUT:** OSD caption reserved time

## Chapter 5: Technical Support

Visit our web site at <http://www.encore-usa.com> for our tech support contact information and policy information.

Version: 1.0

2008/01/16