



DMS WebAccess

User manual



1. INTRODUCTION	3
1.1 Compatibility	3
1.2 Start.....	4
3. CONTROL INTERFACE	5
3.1 Operating modes	5
3.2 Recorder tracks	5
3.3 Camera list	6
3.4 Control and navigation panel.....	6
3.5 Input panel	6
3.6 Display of search results	6
3.7 Navigation	6
3.8 Picture information.....	7
3.9 Picture export	7
4. THE OPERATING MODES OF DMS WEBACCESS.....	8
4.1 <i>Time span</i> mode	8
4.2 <i>Time</i> mode.....	9
4.3 <i>Live</i> mode	10
4.4 <i>Configuration</i> mode	10
5. TO CLOSE DMS WEBACCESS	11

1. Introduction

DMS WebAccess is a research system for web browsers that is installed on certain third generation recorders (DMS 180 III from version 5.12, M-DMS banks, restricted on M-DMS standard).

It ensures that only a standard browser (see compatibility list) is required for access to the recorder's tracks. No other plug-ins or additional software have to be installed.

It is controlled using a graphic interface with the pictures in one track being displayed in JPG format. By simply setting the bandwidth and picture compression rate it is possible to adjust the system perfectly to suit current requirements in terms of picture quality.

In addition to simply track connection and playback, there is a wide range of search options for carrying out specific research. The picture data are then displayed for each picture and the four previous and subsequent result pictures are displayed in a preview strip.

The displayed research results can then be exported in various formats and with the picture data.

1.1 Compatibility

DMS WebAccess has been tested successfully with the following browser / operating system combinations.

Operating system	Browser
Linux	Konquerer KDE 3.1/3.2
	Mozilla 1.4
OS/2	Netscape 4.7
Windows XP (SP2)	IE 5.5
	Netscape 7.1
	Mozilla 1.4 – 1.6
	Firebird 0.8 – 0.81

Please note the following points with regard to the browser:

1. **Pop-ups** and **Session Cookies** must be permitted in the browser settings.
2. The use of the browser **Cache** is highly advisable.
3. The **Language** in which the DMS WebAccess interface is displayed depends on the browser's language setting. If the latter is set to German, the displays will be in German, otherwise they will be in English.
4. Please note that **WebAccess** must have been enabled on the recorder.

1.2 Start

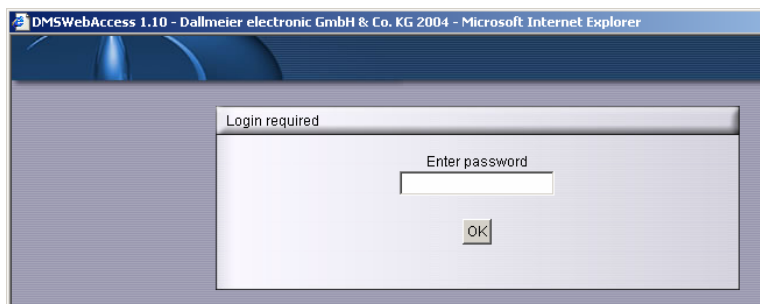
Open the browser and enter the IP address of the recorder in the address line, for example <http://192.168.220.220/>.

First of all the global selection page of the recorder will be displayed, offering various access types.



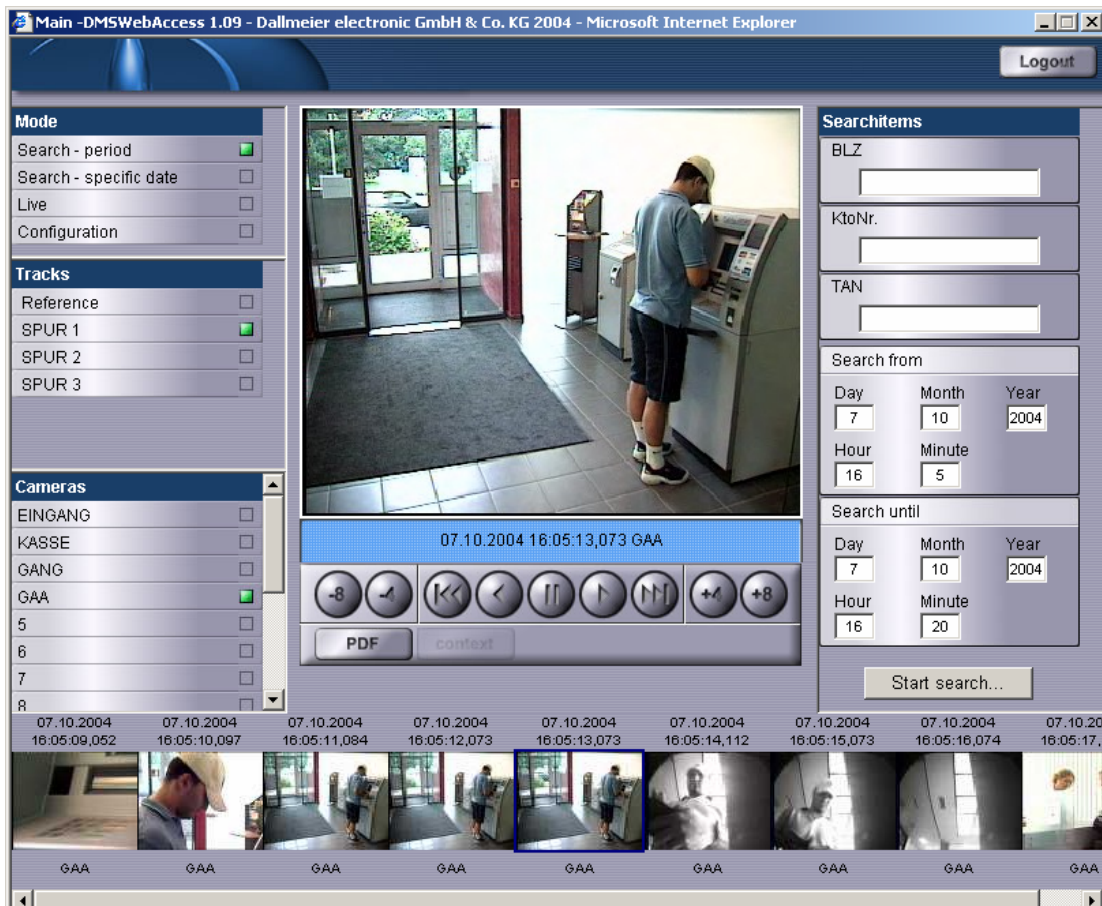
To gain access via DMS WebAccess, click on **login** under **Browser-based picture research system**.

After this the DMS WebAccess login page will be displayed. Start the research system by entering the recorder password and confirming this by clicking on **OK**.



3. Control interface

After starting the system, the default status of the research system will be displayed. The details of the "web page" depend on the recorder configuration at the time of your login. The general arrangement and functionality are always identical, however.



3.1 Operating modes

At the top left you can see the four different DMS WebAccess operating modes in the **Mode** box.

Time span

In this mode it is possible to search for pictures in a certain track (for a selection of cameras) using search criteria.

Time

This allows the user to search for pictures at a certain time.

Live

This mode allows live pictures to be requested from the recorder's cameras.

Configuration

Using this interface the user can make settings for the current session or connection.

3.2 Recorder tracks

The recorder's tracks are displayed below the box for the operating modes. In this example there are tracks named GAA, FOYER, VERDACHT and Reference. The names set on the recorder will be used. A search always refers to the track that is currently active. As has already been mentioned, the browser will display the values that are valid on the recorder page when you log in. If, at this time a track is empty, this will be indicated by the text **Track not active** in the **Search criteria** box, even if a recording has already been started.

3.3 Camera list

The recorder's cameras are displayed at the bottom left with the camera names being used by the recorder.

Several cameras can be selected for the search modes. In this respect the green selection knob stands for "Configured in this track for recording" and blue for "Not configured in this track for recording". The following also applies:

Black script

Active, connected camera.

Grey script

Camera specified in the recorder configuration but not connected at the time of the login.

3.4 Control and navigation panel

In the center of the browser window you can see the panel for navigation in the tracks. A more detailed explanation of the control panel is given in the description of the search modes.

3.5 Input panel

On the right-hand side of the screen you will see various search masks or configuration boxes, depending on the mode.

3.6 Display of search results

The result of the search is displayed in the preview with small pictures (bottom) and with one large picture (center). The preview is organized in chronological order from left to right. In this respect the large picture refers to the center picture in the preview.

3.7 Navigation

Using the navigation panel it is possible to move within the search results. In this respect the buttons with an "arrow and line" to the left and right move the user to the newest and oldest search result. The "single arrow" means "playback" results forwards or backwards. The pause key allows the user to exit this playback mode again. The buttons on the left and right with -8, -4, +4 and +8 enable the user to navigate forwards or backwards by the appropriate number of pictures.

3.8 Picture information

Information on the picture is displayed between the navigation panel and the large picture.

3.9 Picture export

There are three different methods and formats for exporting the current picture.

PDF

This function (**PDF** button) creates a report in the widely used PDF format. The report contains the current picture with the recording time and camera name as well as event data that have also been recorded. The report can be saved, printed and sent.

To create the PDF file click on **PDF** and then on the text [Anzeige / Download Report als PDF-Dokument...](#) that is displayed instead of the picture.

The picture is saved in the highest quality, regardless of the picture quality set in **Configuration**.

JPG

You can also save the current picture in JPG format. To do this right-click on the picture. Then select the appropriate entry in the context menu.

Wavelet

You can also save the current picture in Wavelet format. To do this right-click on the picture. Then select the entry **Save target as...** in the context menu. .

Just like the PDF file, the picture is again saved in the highest quality, regardless of the picture quality set in **Configuration**.

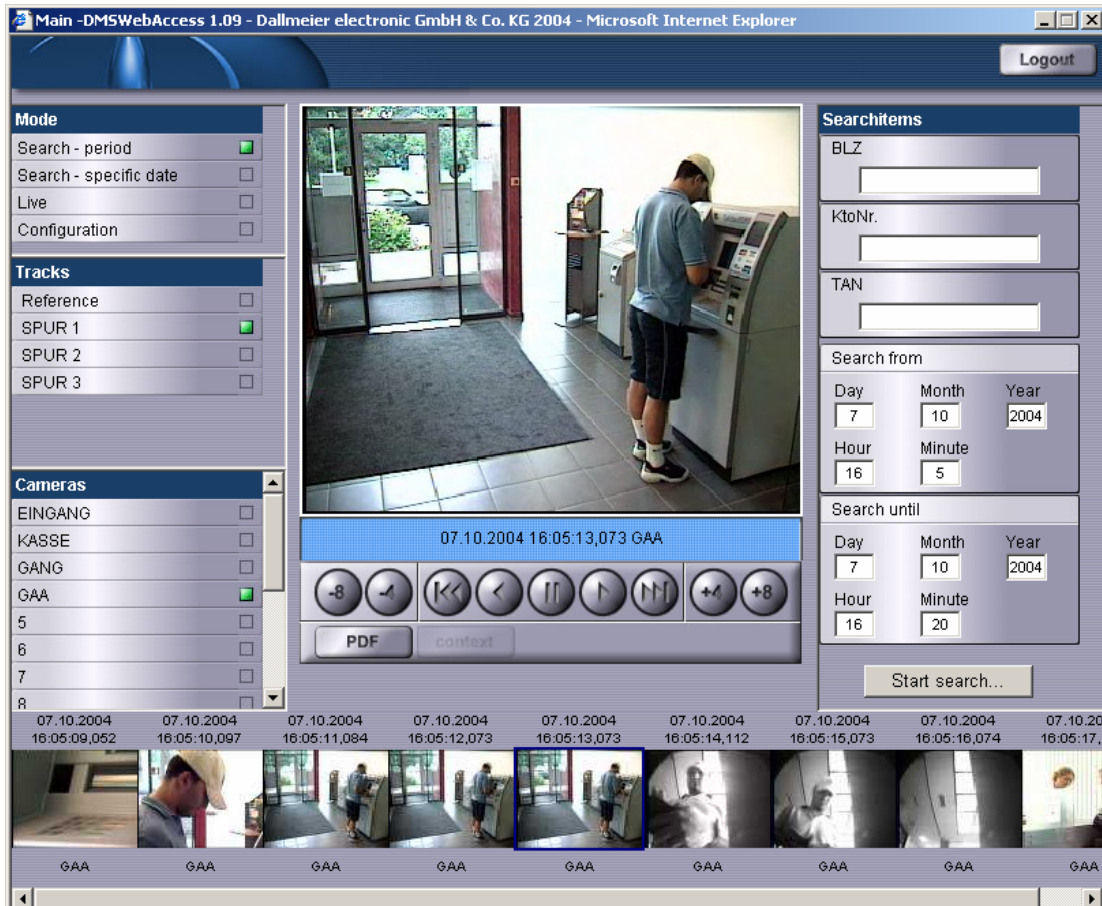
Exporting the picture in Wavelet format offers greater security compared to the other two formats. The picture is reviewed when the file is opened using ProcessViewer. If it has been altered after it was exported, the program indicates this.

4. The operating modes of DMS WebAccess

4.1 Time span mode

To define a search

Time span mode allows the user to search for pictures on the basis of a period of time using a camera filter and defined criteria.



The **search criteria** are shown on the right-hand side of the browser window. A list of all the search criteria defined for the recorder will be offered. A comparison is made character by character. The specified character string must therefore be included in the saved record.

Following this the input boxes for the **Start time** and **End time** are displayed and can be used by the user to define the **Time span** for the search. The default values in these boxes are the start and end times of the track. This maximum time span should be reduced for large tracks, however.

Start search

The search can be started by clicking on **Start search**.

Evaluate search

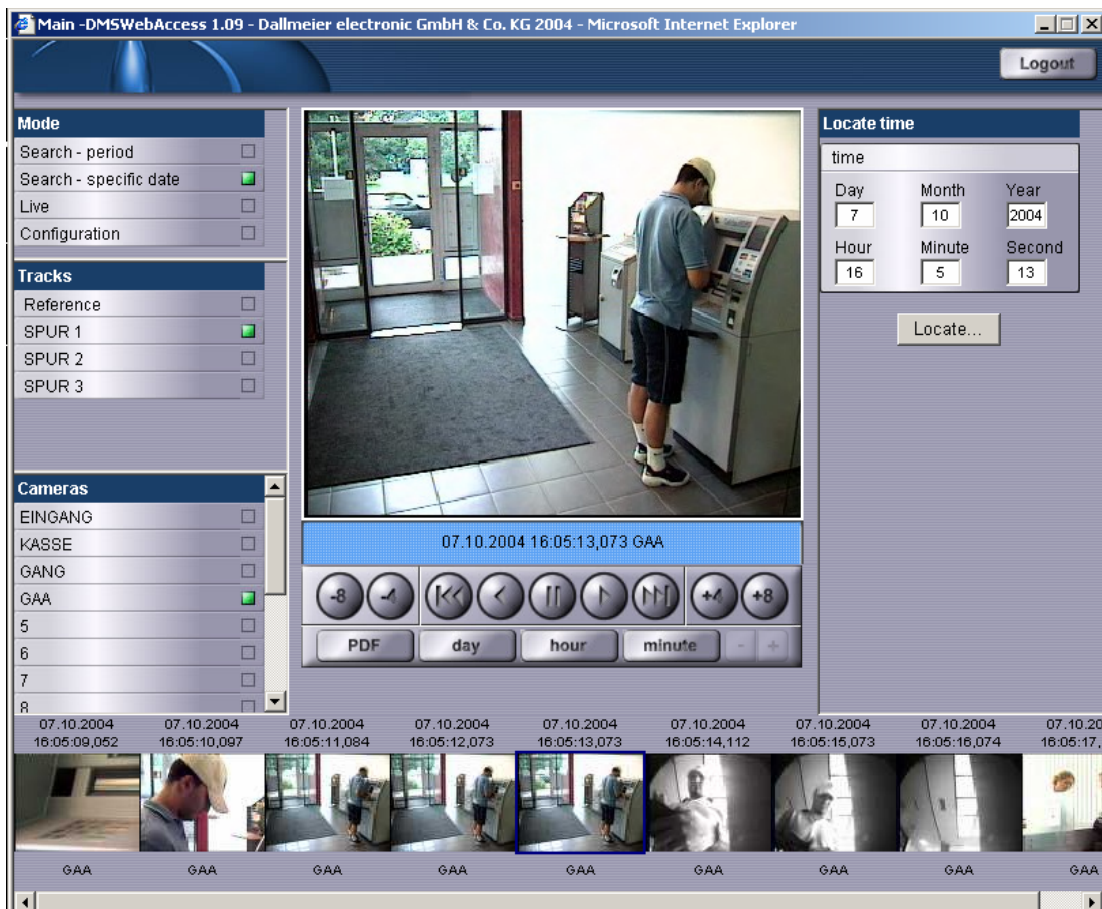
As described above, the result of the search is displayed in the preview and with one large picture.

In addition to the evaluation options described, there is a **Context** button below the navigation panel. This allows pre-alarm pictures to be displayed if the recorder has been configured to record pre-alarm pictures.

Like the search results, the pre-alarm pictures are displayed as a preview and in a large picture. The **Back** button takes the user back to the previous search result.

4.2 **Time** mode

In **Time** mode it is possible for the user to position himself at any time within a selected track. If the track is changed, the new track is displayed automatically at this (current) time. This makes it very easy to compare various tracks at a specific time.



To define a search

Enter the relevant time in the box on the right-hand side, in the same way as for the time span search. The default values for these boxes are the data for the last picture to be displayed. If you start the search without entering the time, the system will be positioned at the start of the track.

Start search

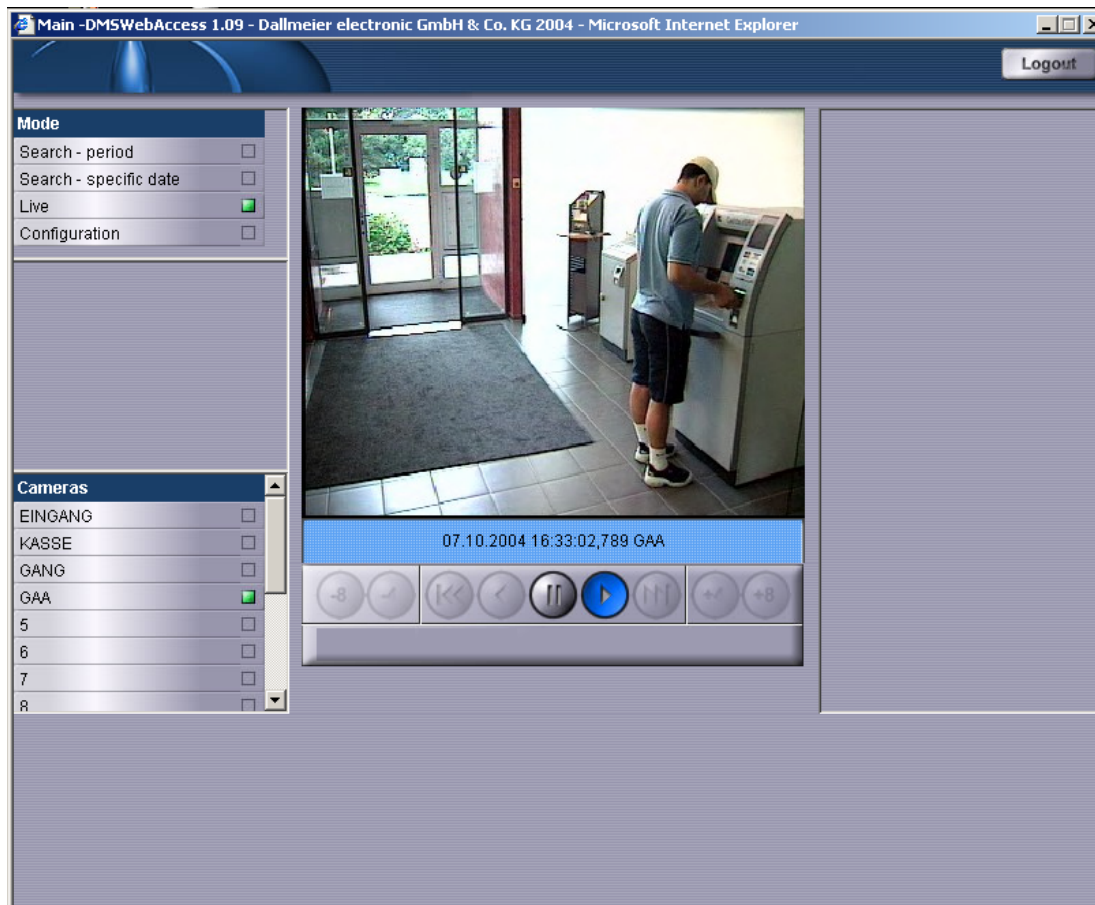
Start the time search by clicking on **Position**

Evaluate search

The method for displaying and evaluating the search results is as described above.

The **Day**, **Hour** or **Minute** buttons are used in combination with + and - to navigate forwards and backwards by the set time span.

4.3 **Live** mode



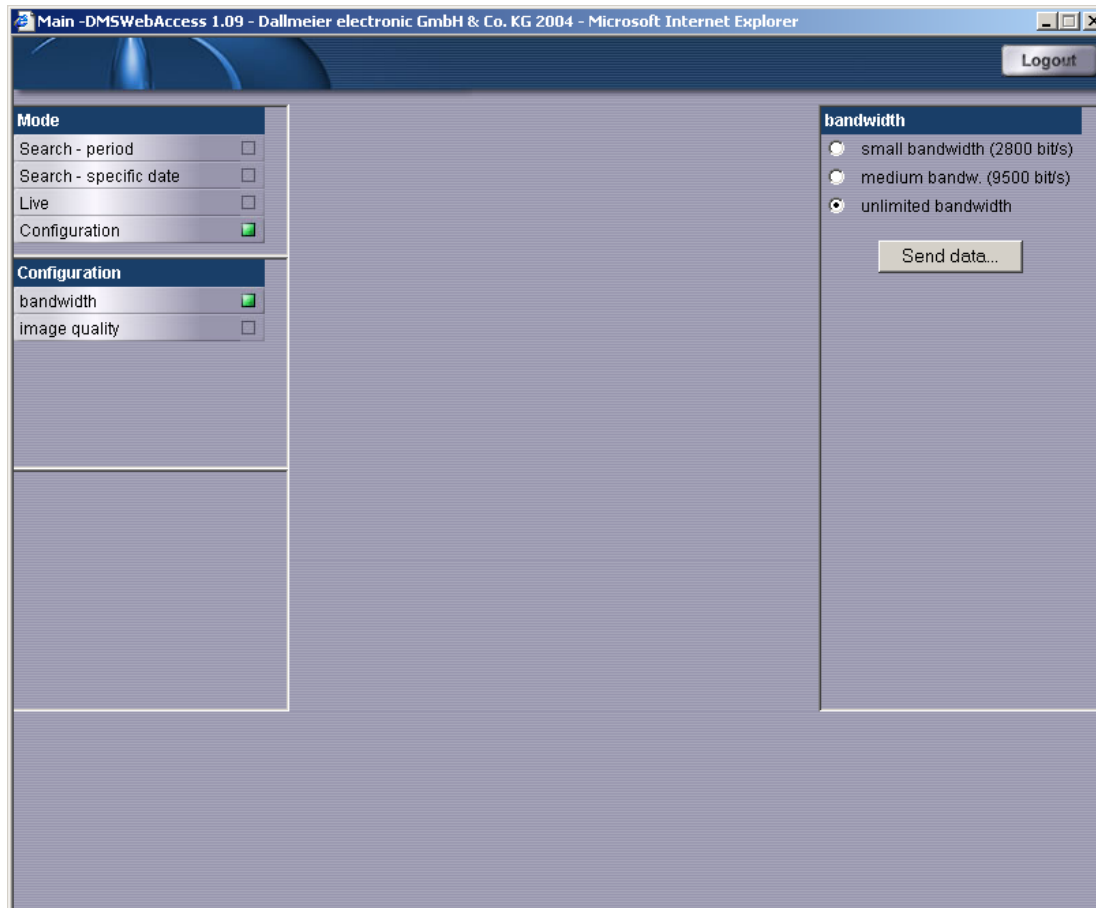
The track information for the recorder is not displayed in live mode

Cameras can only be selected as alternatives, with live pictures from the current camera being displayed.

There are no preview pictures and the frame on the right-hand side is not displayed.

Only "Play" and "Pause" are activated in the navigation bar to start and stop the live pictures.

4.4 Configuration mode



In **Configuration** mode the use of resources when connected to the recorder can be regulated. These settings are only valid for the current connection and are reset to the defaults (which can be configured by the administrator) when the application is restarted.

The **Bandwidth** setting decides the maximum picture data that may be transferred per unit of time for this connection.

The **Picture quality** settings can be used to influence the compression and compression quality of the pictures. Typically a low picture quality will be selected for a connection configured for a narrow bandwidth to reduce the loading time for the pictures.

5. To close DMS WebAccess

To exit the application, first click on **Logout** (top right). After that, the browser window can also be closed.