



powercase 2300

protective case +
built-in portable battery charger

User Manual

Congratulations on purchasing the Ventev powercase 2300, a high-capacity, portable charging case.

Your new powercase 2300 delivers double duty peace of mind – rock solid protection for your Samsung Galaxy S®4 and up to an additional 13 hours of talk time – keeping you connected to what's most important in your world.

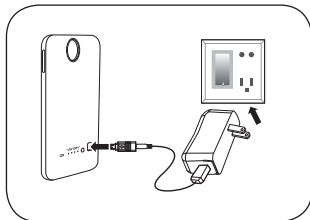
Please read the information in this manual carefully to ensure optimum performance of your new powercase 2300.

Discover all of Ventev's mobile power solutions online at ventev.com.

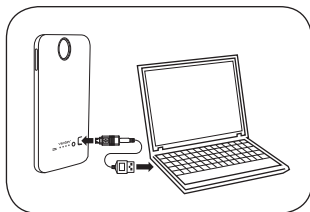
Operating Guide

1. Charging the powercase 2300:

- Charging via compatible wall charger*



- Charging via PC

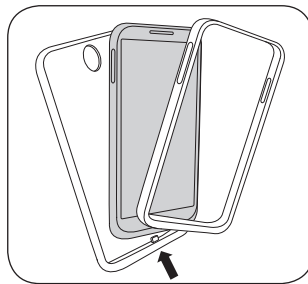


*Optimum Wall charger is 5V≥1A.
(Wall charger sold separately)

Charging your Samsung Galaxy S®4 with the new powercase 2300 is easy:

- Slide your Samsung Galaxy S®4 into the powercase, making sure the connector at the inside bottom of the case is plugged into the port at the bottom of your phone. Snap the front band around your device to secure it inside the powercase.
- To begin charging your Samsung Galaxy S®4, hold down the case's power button until the LED light turns on, or connect case to a power source.

Without a phone connected, the powercase will turn itself off automatically after 10 seconds.

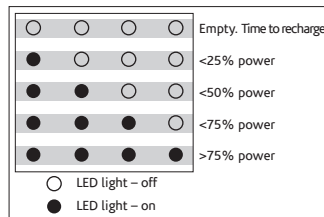


Specifications

- Product Specifications

Input: 5V, 1A (5W)
Output: 5V, 1A (5W)
Battery Type: Lithium Polymer
Battery Capacity: 2300mAh@3.7V with CTIA battery cell
Dimensions: 146.6mm x 75mm x 16.5mm

- LED Battery Level Indicator:



Contact Information



Ventev Innovations
11126 McCormick Rd.
Hunt Valley, MD 21031
(800) 759-9996
ventev.com



Discover the power of Ventev.
View all of Ventev's mobile power solutions online at ventev.com.

Manufactured by Ventev Innovations®

©2013 Ventev Innovations.
All rights reserved.
Designed by Ventev in the USA.
Assembled in China.

REV. 8/13

Safety Precautions

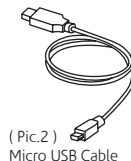
- Do not expose the product to fire or other high temperature environments.
- Do not expose the product to water.
- Stop using if any of the following conditions occur: electrolytic liquid leakage, overheating, color change, or any other unusual conditions.

Maintenance

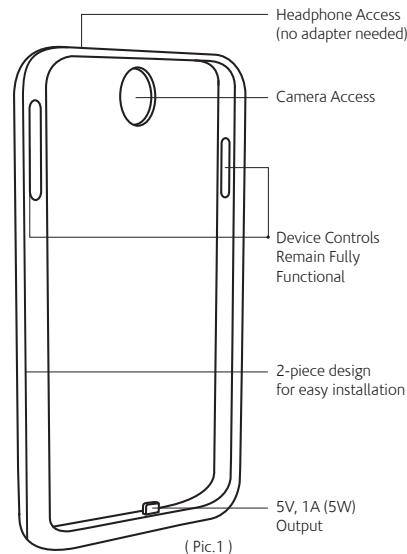
- Do not expose the **powercase** to direct sunlight for long periods of time, or leave it any place with high temperature or high humidity.
- Discharge and recharge the **powercase** periodically if you don't plan to use it for an extended period of time.

Features

- Standard Components
 1. Powercase 2300 (Pic.1)
 2. Micro USB Cable (Pic.2)
 3. User Manual



(Pic.2)
Micro USB Cable

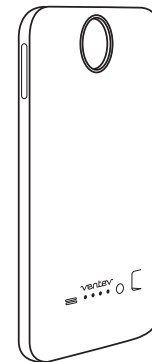


(Pic.1)

ventev®

powercase 2300
protective case +
built-in portable battery charger

User Manual



Ventev Innovations warrants to the original purchaser of this product that it is free from defects in material and workmanship and that if used in accordance with any accompanying labels or instructions, it will perform as specified for one year from the date of purchase. This limited warranty does not cover damages caused by accident, misuse, modification, or normal wear and tear. This warranty is Ventev Innovations' only warranty. There are no other warranties, expressed or implied, including any warranty of merchantability or fitness for a particular purpose; and purchaser's remedy if this warranty is not met, is limited to repair or replacement, as stated above.