

# R5201 2-channel receiver user manual

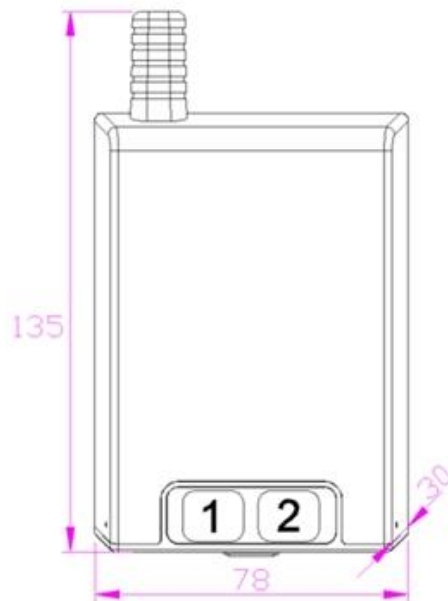
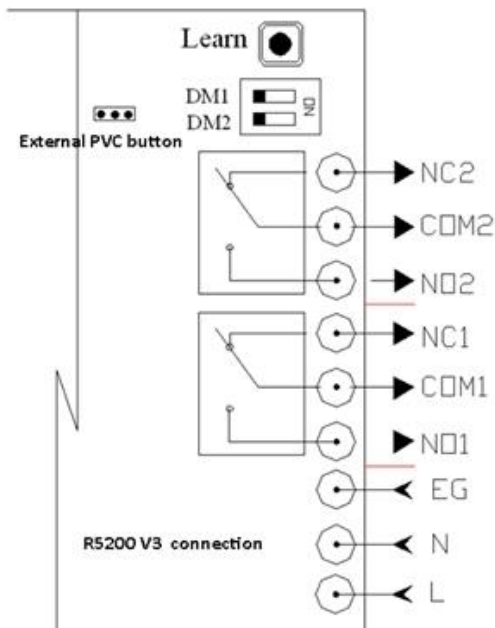
## I. Safety Instruction

1. For security please read the user manual carefully before initial operation;
2. Please be sure the power is off before connecting, the product is produced without fuse;
3. Please clear all memories before initial operation. (Please see the deleting all transmitter).
4. Don't PROG, during channels are switching, in order to prevent misoperation;
5. The receiver will be interfere with same frequency products.(Wireless control system work in the same frequency range);
6. Prevent using this system to control the high risk equipment. (such as crane);
7. This manual control, wireless receiving equipment must not endanger life or property during the running failure or its security risks have been eliminated;
8. Linking wires shouldn't be too long, in order to prevent unstable work.

## II. Technical Specification

1. Working voltage: 85V-265V AC
2. Temperature range: -20°C to 60°C
3. Working frequency:433.92MHz
4. Transmitter stored: Rolling code 30-300PCS;fixed code 60-600PCS
5. Loading capacity: 0.5HP/ 240VAC

## III: Connecting wires



### DIP set up:

	DIP 1	DIP 2
ON	Channel 1 latch	Channel 2 latch
OFF	Channel 1 non-latch	Channel 2 non-latch

## IV: Operation

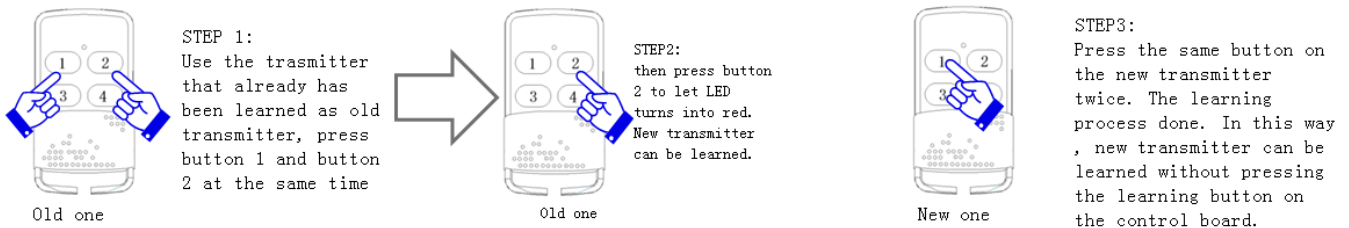
**1: Learning Transmitter:** Press the learning button of the receiver, then LED is red. Press any one of the transmitter twice times, LED flickers and continues on several seconds, then off. It is indicated

the learning is successful.

**2: Deleting transmitter:** Press the learning button for a long time, the indicating lamp is red for 8 seconds, and then off, release the learning button, LED is red for 2 seconds and then off; complete the deleting transmitter.

**3: Latch or non-latch options:** In dial switch S2 [1], [2] correspond latch and non-latch switch of receiver output channel 1,2; Setting dial switch to off, It is non-latch.

**4: Self-learning function:** Use the transmitter that already has been learned as old transmitter, press button 1 and button 2 at the same time and then press button 2 to let the receiver enters into the learning process .In this way , new transmitter can be learned refer 4.1 without press the learning button S1 on the receiver.



**5: Transmitter control:** After completing learning transmitter, the button 1/2 of transmitter can control the channel 1,2 of receiver respectively.

6: The function of external PVC button 1/2 is the same as the button 1/2 of transmitter.

#### V: The difference of model and specification

MODEL	Frequency	Code	Transmitter stored	Working voltage
R5201	433.92Mhz	Rolling	30	85-265VAC
R5203	433.92Mhz	Rolling	300	85-265VAC
R5205	433.92Mhz	Fixed	60	85-265VAC
R5207	433.92Mhz	Fixed	600	85-265VAC