



HIGH RISE PLOW PUSH FRAME KIT

P/N 33-0000

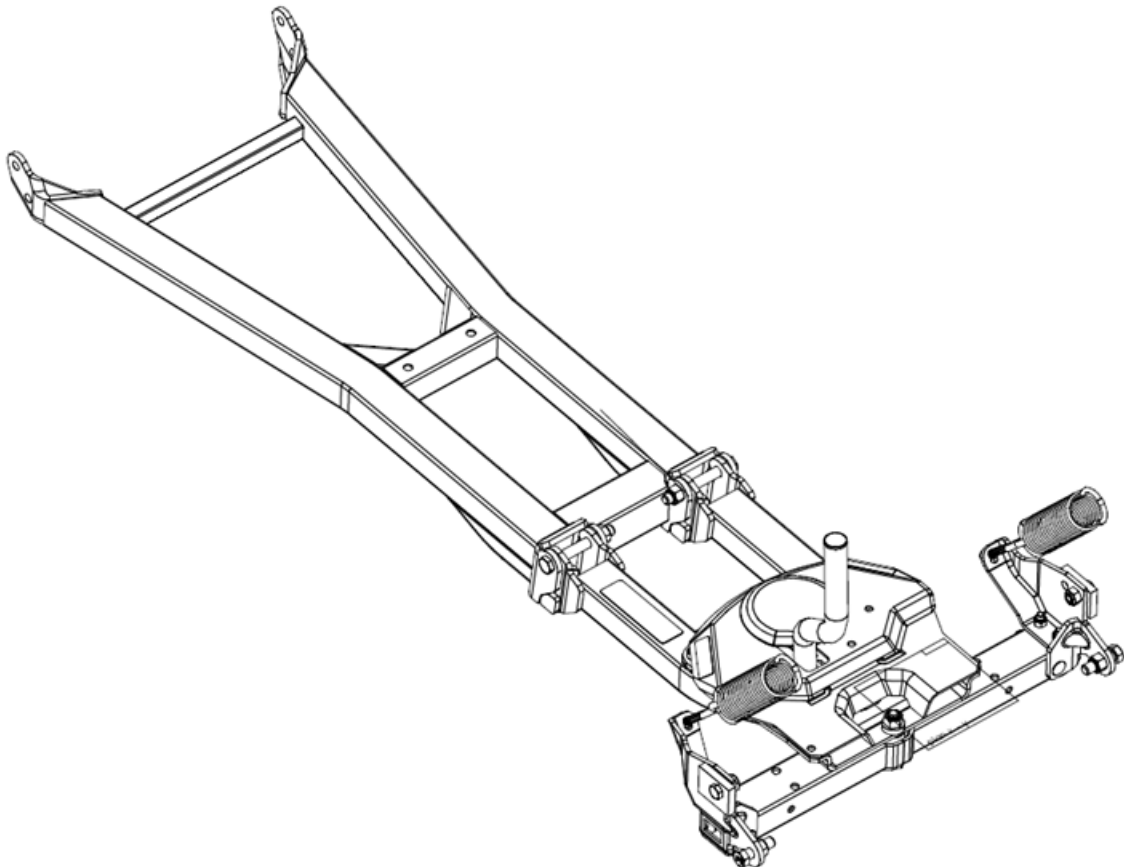
USER OPERATING MANUAL

Application

MID-BODY ATV MOUNT NO. 15-XXXX, ALL MOUNT NO. 15-0050

**ATTENTION DEALER: CUSTOMER MUST RECEIVE A COPY OF THIS MANUAL
AT THE TIME OF SALE.**

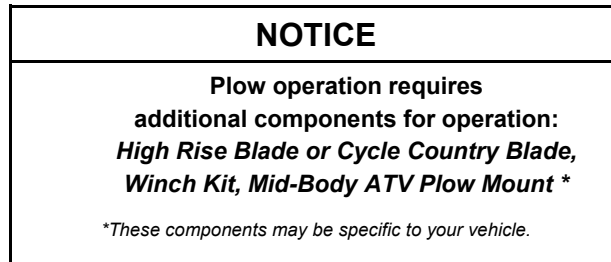
Before you operate the plow system, please read these instructions to become familiar with operation. The following instructions contain details required for adjustment and maintenance.



INTRODUCTION

Congratulations! You've just purchased one of the industry's top plow system component. The High Rise Plow Push Frame works great for all types of plowing. With proper care and maintenance, your plow push frame will last for many years!

The blade pivot gear design allows the operator to select multiple angled left-or-right positions, and also incorporates a spring-loaded 'trip' system that allows the blade to handle impacts with small obstructions. The double-pivot system allows the plow blade to be raised higher than conventional mid-body plow frames, thus increasing ground clearance 'terrain-ability'. Additionally, this plow frame will handle light to medium-duty summer landscape work.



Please read and understand all adjustment/maintenance instructions, notices and warnings before assembling and operating your plow system.

Follow these guidelines to ensure satisfactory operation:

- Read this manual and your ATV operators manual before use.
- Periodically check for wear and tightness of all fasteners. Replace or re-torque fasteners as necessary.
- Before first use, set plow in the furthest right or left angled position to check for clearance between the plow and front tires.
- Operate with extreme caution on slopes and rough terrain. Be familiar with the area before you plow.
- Be aware of immovable objects that could be hidden in the area you are plowing.
- To avoid damage when pushing snow into a pile, reverse direction before raising the plow blade.
- Do not ram the plow blade into piles of snow. ****Slow down before hitting a pile.****
- For best results, set the suspension preload of your ATV to the stiffest setting.
- To reduce steering effort and increase mobility, set the air pressure of your tires to the maximum pressure specification.
- The plow skids are adjustable. General skid setting is even with the plow wear bar bottom edge, higher settings reduce the chance of rocks and gravel from being collected.
- To increase traction during plow operation, operators can try: Securing weight to the ATV for additional tire downforce, reducing tire air pressure, or installing tire chains.
- The plow blade assembly is designed to 'trip' when it strikes an object or digs in too far. When pressure is released, the plow springs back into position. *Spring tension can be increased by tightening the locknuts on the bottom of the eyebolts. For less spring tension, loosen the locknuts.*
- Always wear appropriate protective clothing as recommended in ATV's operator's manual.
- Keep away from blade and moving parts during operation.
- Keep these instructions for future reference.
- All directions referring to right and left are when the rider is sitting on the machine.
- Your Kolpin accessory is exclusively designed for your vehicle.

SAFETY INFORMATION

Our plow systems were designed with your safety in mind. Please read and understand all Cautions, Notices and Warnings in this manual before you begin. In order to protect you and your ATV, certain parts of the plow system and/or hardware are designed to fail when the equipment is over-stressed.



DANGER



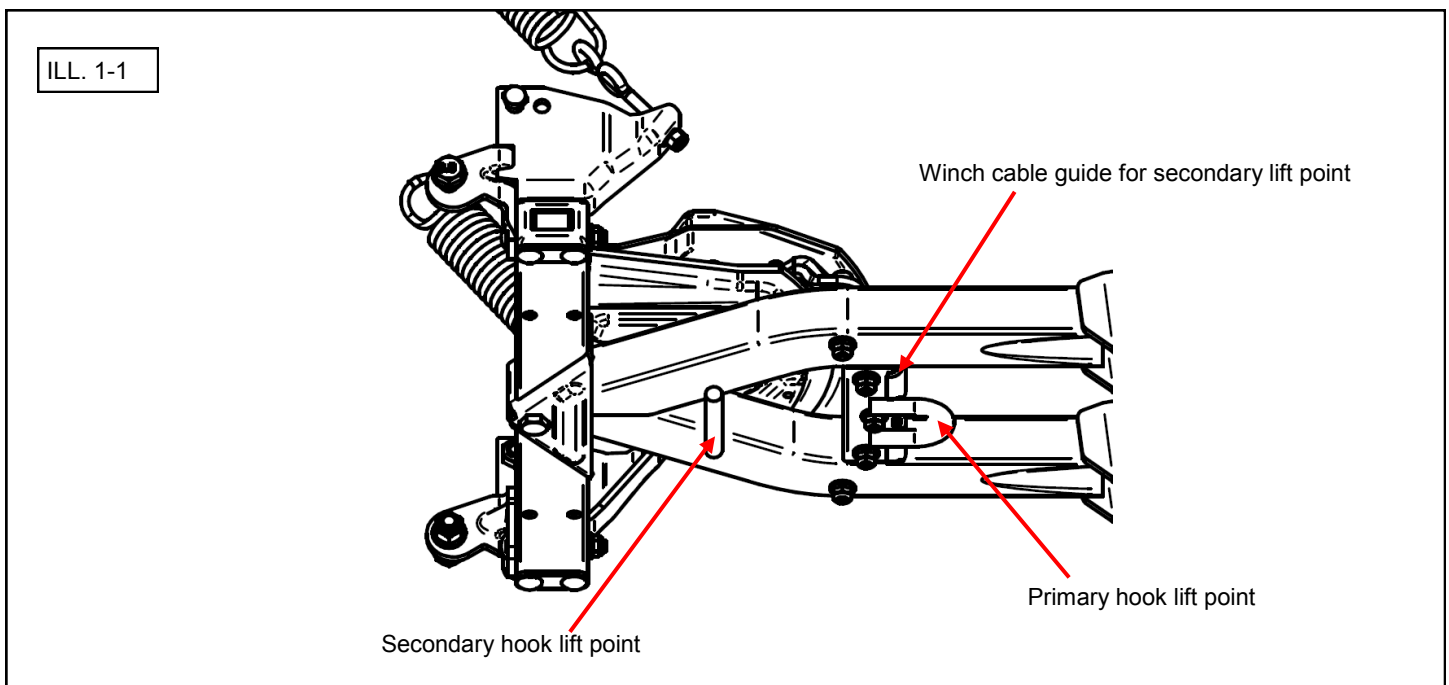
TO AVOID SERIOUS INJURY OR DEATH:

1. DO NOT EXCEED 5 MPH (8 KM/H) WITH THE BLADE INSTALLED.
2. OPERATE WITH EXTREME CAUTION ON SLOPES, STEEP GRADES, AND ROUGH TERRAIN.
3. ALLOW NO RIDERS ON BLADE OR ATV WHILE MOVING OR STATIONARY.
4. KEEP BYSTANDERS AWAY FROM THE BLADE OR ATV WHILE MOVING OR STATIONARY.
5. WHEN PUSHING HEAVY MATERIAL, DIRECTION CONTROL MAY BECOME DIFFICULT.
6. BEFORE ADJUSTING BLADE: STOP ATV ENGINE; SET AND LOCK BRAKES; RAISE AND LOCK BLADE IN UP POSITION. DO NOT ATTEMPT TO RAISE BLADE BY HAND; USE THE LIFT MECHANISM ONLY.
7. LOWER BLADE TO DOWN POSITION WHEN BLADE AND ATV ARE NOT IN USE.
8. READ PUSH FRAME'S INSTRUCTION SHEETS AND ATV OWNER MANUAL.

OPERATION

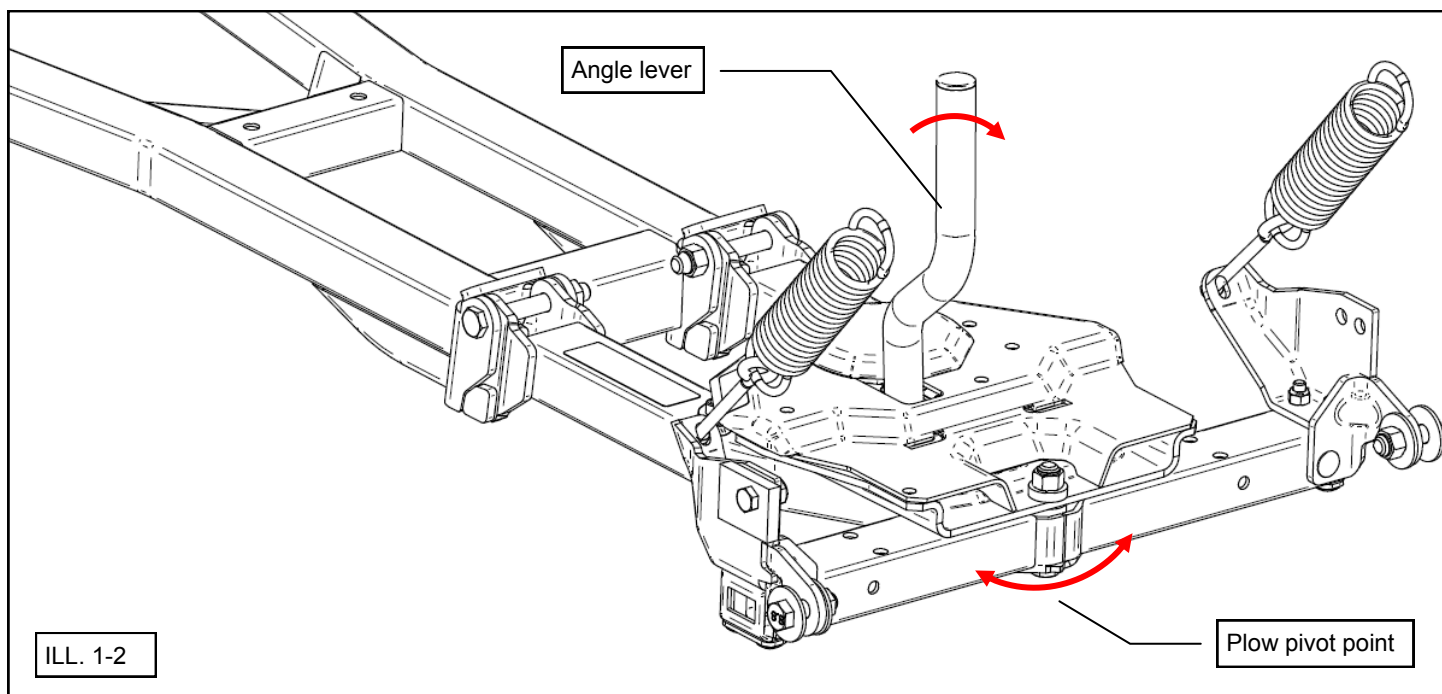
WINCH CABLE PUSH FRAME LIFT POINT

1. The primary winch lift point for the High Rise push frame is the round hook loop as shown below. Depending on ATV, a secondary winch lift point may be better for winch cable routing. The secondary lift point is located on the underside of the push frame. The cable hook can be connected to the straight round bar. (See illustration 1-1)

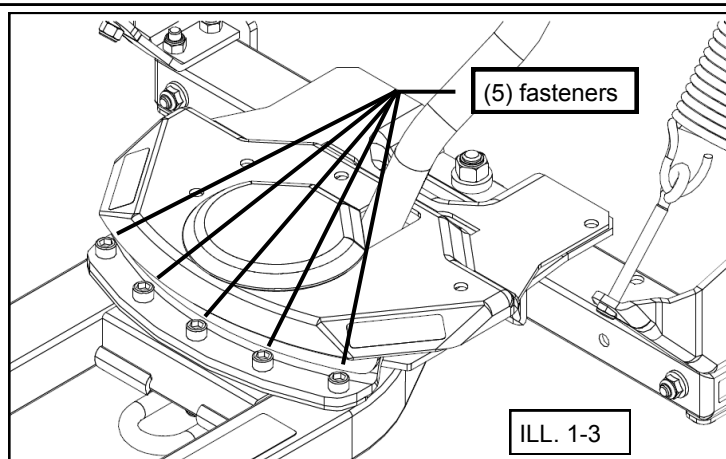


OPERATION (continued)

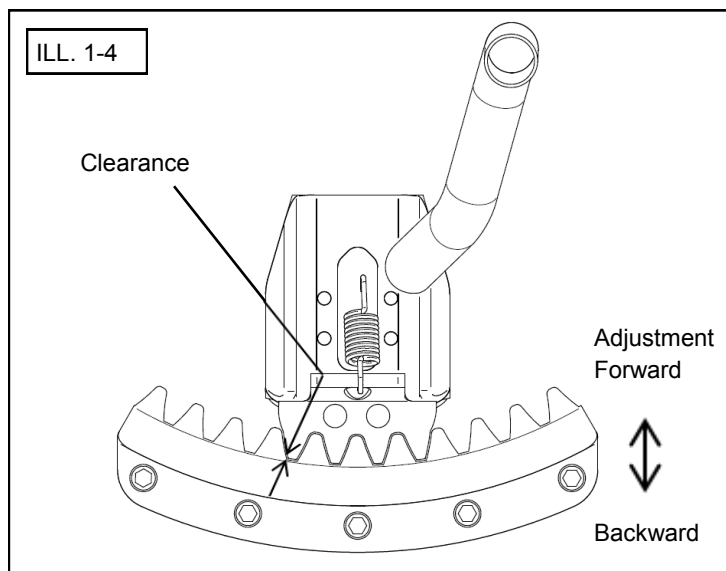
- To adjust the angle of the plow so it pushes to the side, lift the plow up with the winch to clear the ground. Pull the angle lever toward the blade and pivot the plow to desired angle. Release the angle lever and the plow will lock itself in place at a predetermined angle on either side. (See illustration 1-2)



- Be sure to frequently check that the (5) fasteners of the gear lock assembly are always tight to ensure good system function. (See illustration 1-3)

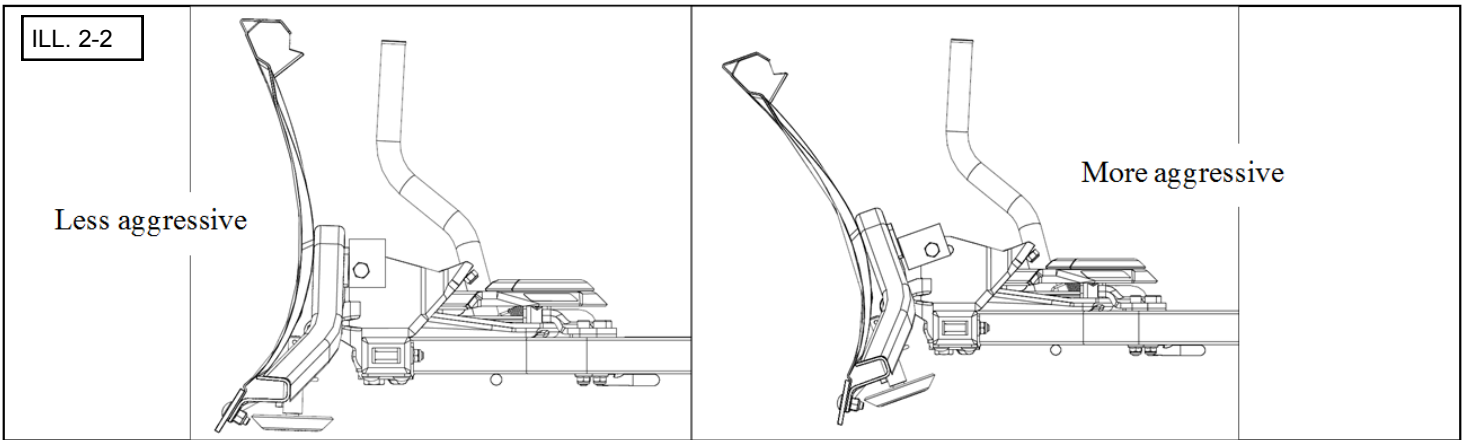
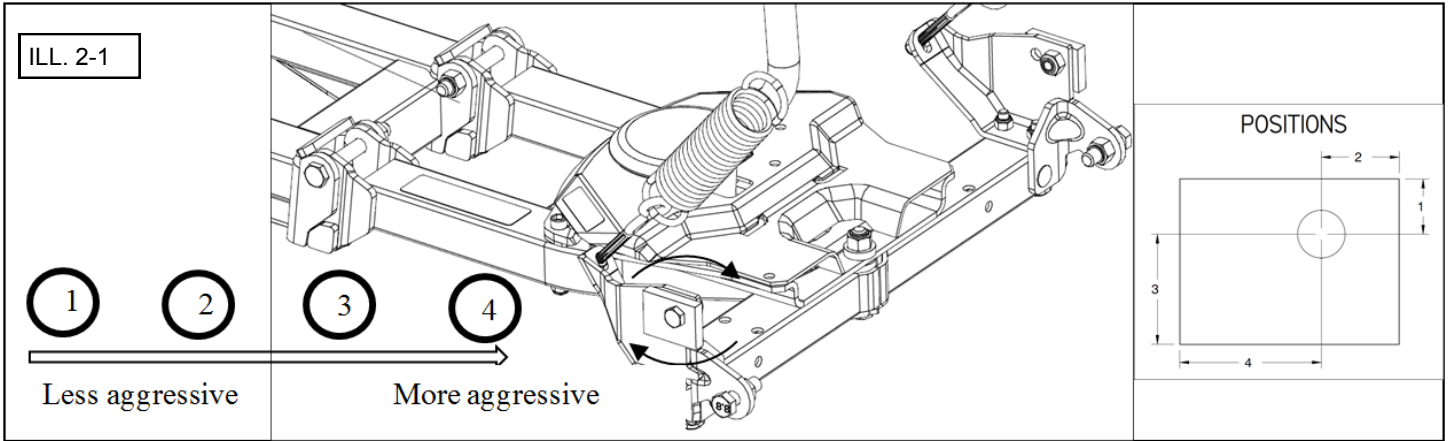


- It is possible to adjust the clearance between the blade position lever and the blade position gear locking plate. Loosen the (5) bolts and move forward or backward the blade position gear locking plate. (See illustration 1-4)

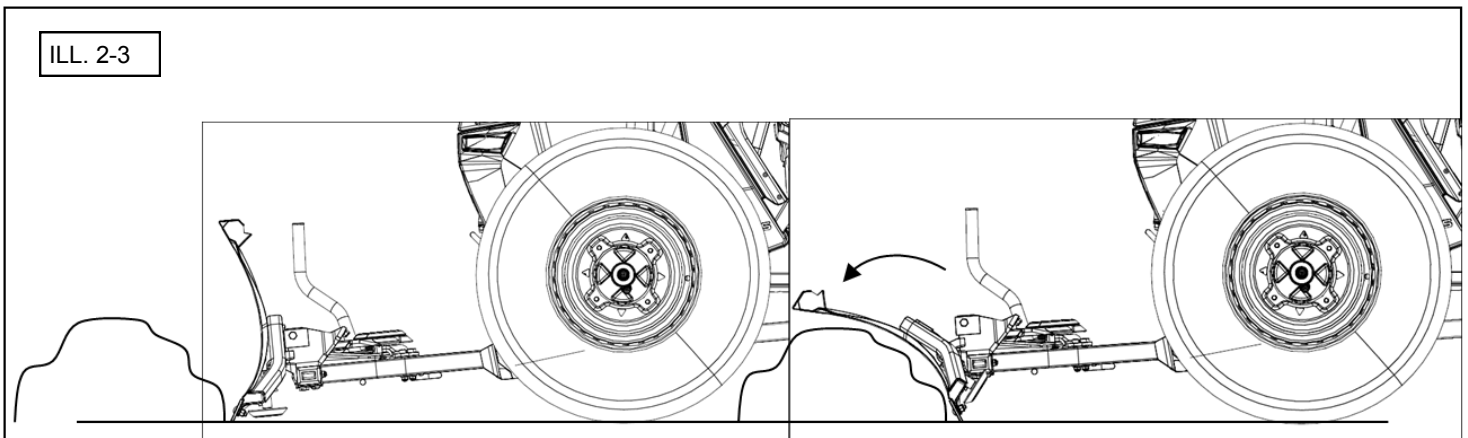


SCRAPING ANGLE ADJUSTMENT

1. Turn adjustable plow stoppers to one of the four positions in order to make the plow more aggressive or less aggressive. Position 1 is the position with less material. (See illustrations 2-1 and 2-2)

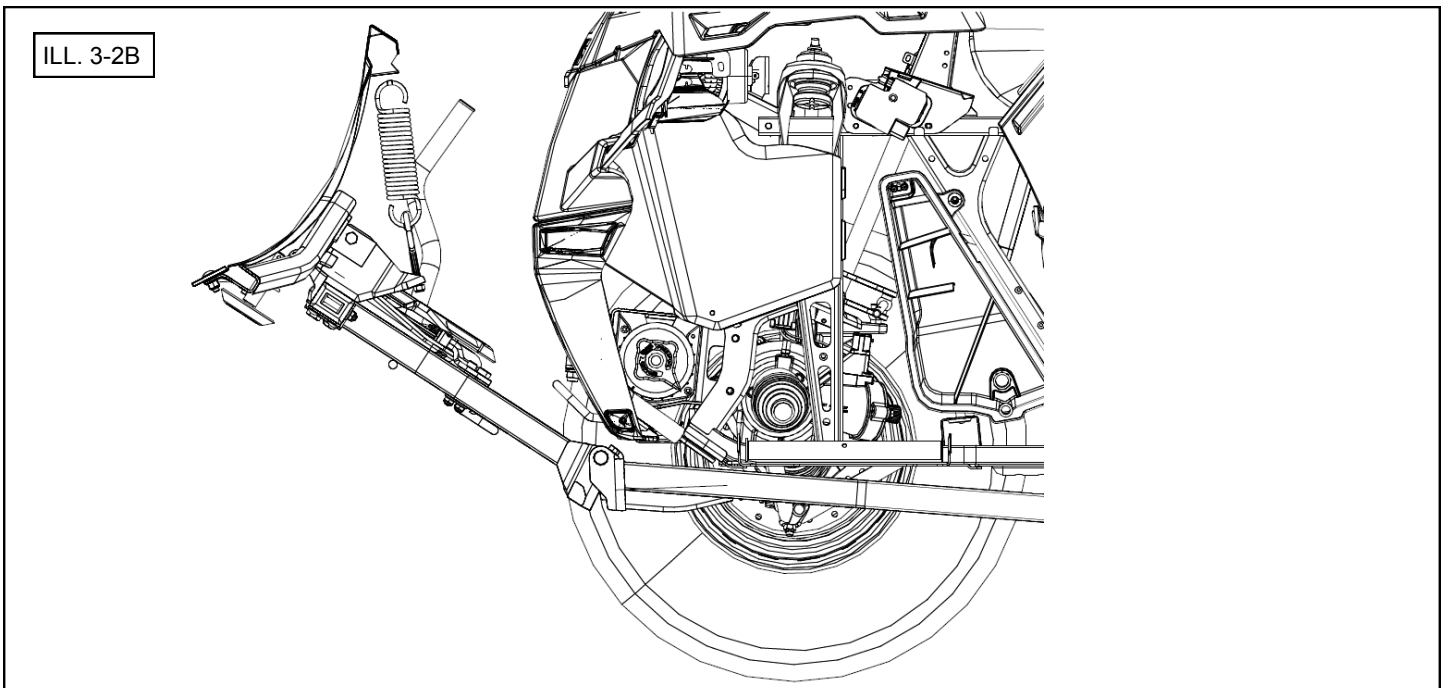
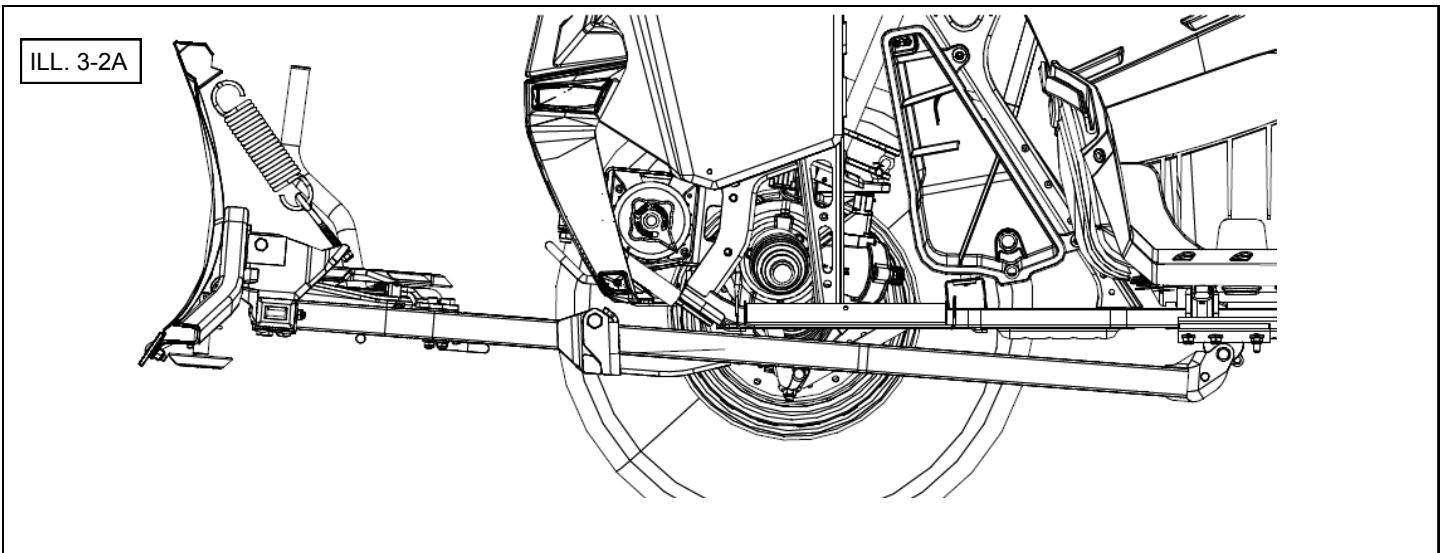
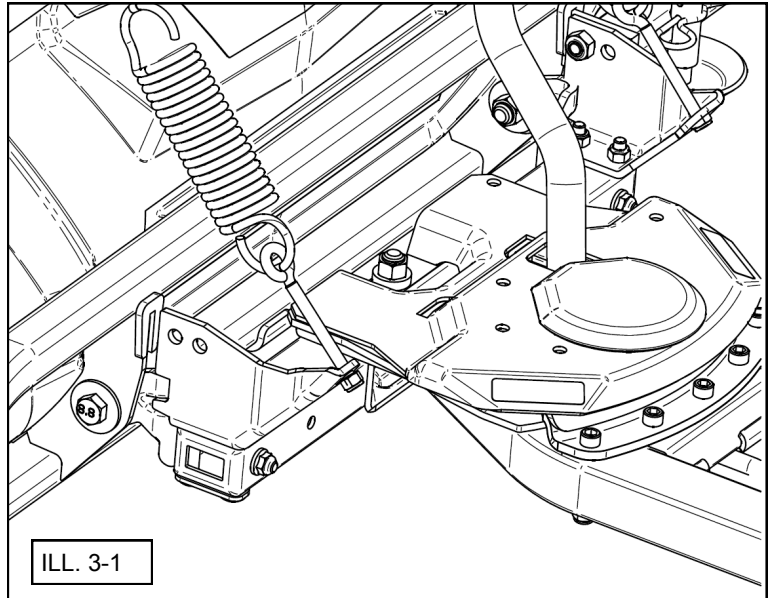


2. The plow is designed to trip forward when it hits a solid object. When the pressure on the plow is released, it will return to its original position by itself. (See illustration 2-3)



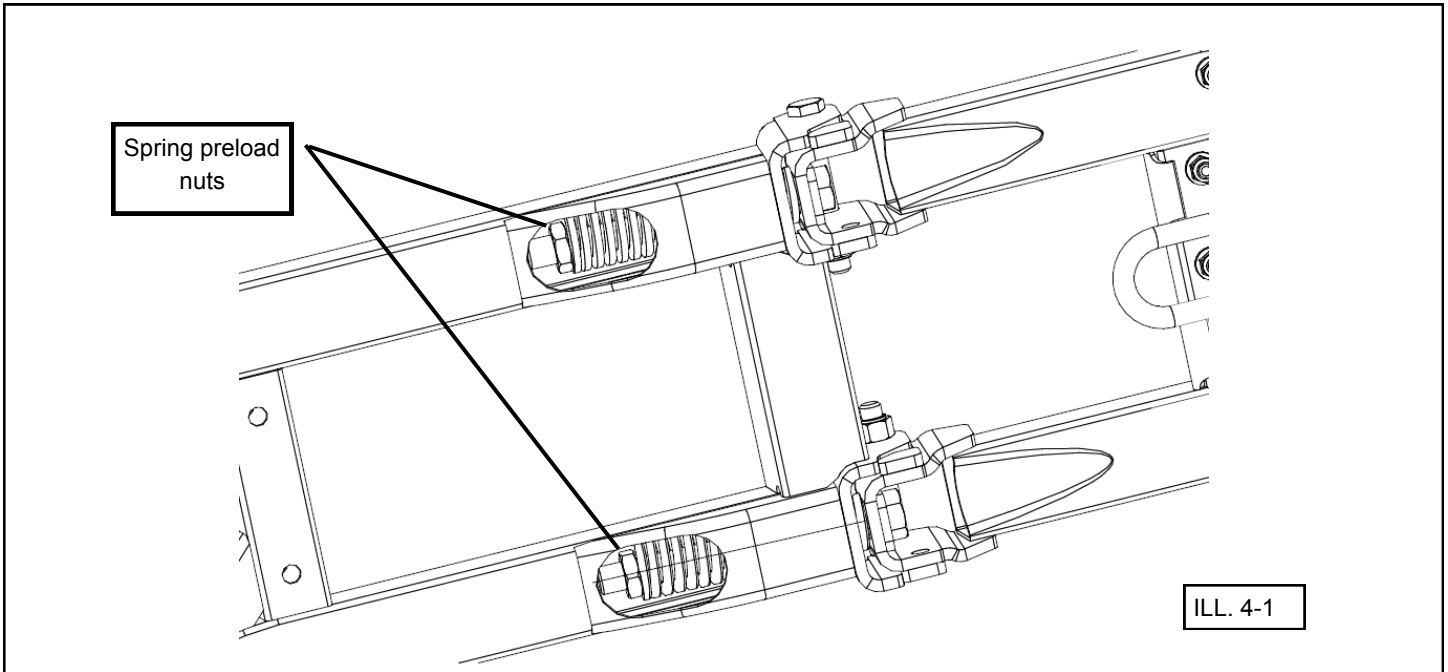
PLOW TRIPPING FORCE ADJUSTMENT

1. The plow springs may be set stiffer by tightening the self-locking nuts located at the ends of the eye bolts. For less tension, loosen the nuts. (See illustration 3-1)
2. To reach plow blade maximum lift height, the double hinge pivot is designed to bend when the push frame comes in contact with the frame of the vehicle. (See illustrations 3-2A and 3-2B)



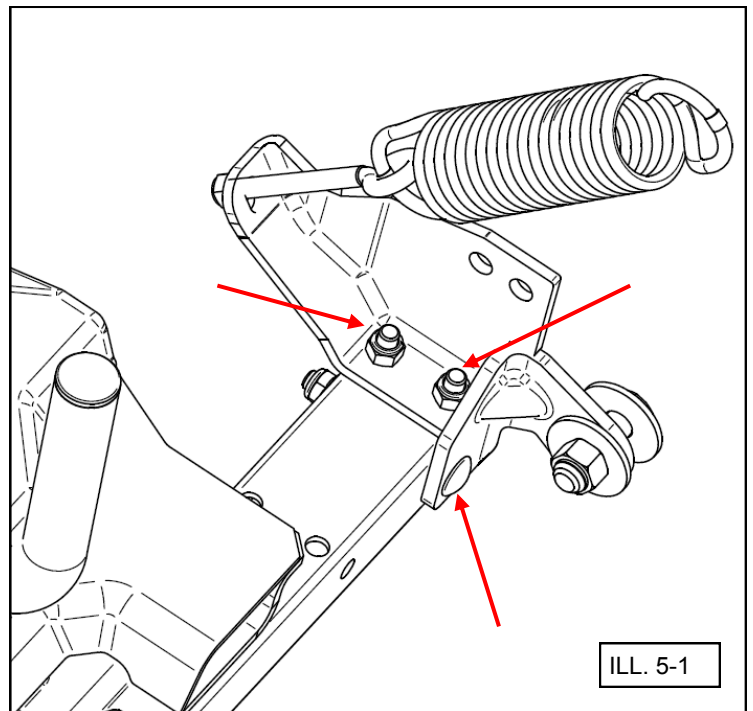
DOUBLE HINGE LIFT ADJUSTMENT

1. A heavy ATV might need more tension on the spring in order to push more snow. To have more tension on the double hinge pivot, tighten the self-locking nuts of the double hinge spring. Plow maximum lift height will be decreased by tightening the nuts. OEM spring length adjustment is 114mm. If a lower rated pulling capacity winch is used on a smaller ATV, it may be necessary to decrease the preload of the double hinge springs. (See illustration 4-1)



MAINTENANCE

1. Be sure to frequently check that the fasteners of the blade spring brackets are always tight to ensure good system function. (See illustration 5-1)





One Year Limited Warranty

For the period of one (1) year from the purchase date, Kolpin will replace for the original purchaser, free of charge, any part or parts found upon examination by Kolpin to be defective in material, workmanship, or both.

All transportation costs incurred submitting product to Kolpin for warranty consideration must be borne by the purchaser. If Kolpin determines that the product must be returned to the factory for credit, please call 1-877-956-5746 for a Return Merchandise Authorization (RMA) number and shipping instructions.

This warranty does not apply to parts that have been damaged by accident, alteration, abuse, improper maintenance, normal wear, or other causes beyond the manufacturer's control. In order to protect you and your ATV, certain parts of the plow system and/or hardware are designed to fail when the equipment is over-stressed. Parts that are lost due to loosening and improper maintenance are not covered under warranty. This warranty does not cover removal or reinstallation labor fees of the plow system and related components.

Peripheral products such as engines, electric motors, and actuators may carry an original manufacturer's warranty. Most hardware is general in nature and is easily obtained locally. Be sure to replace with minimum metric class 8.8 specification.

Kolpin Outdoors, Inc.

Telephone: (763)-478-5800

Toll Free: (877)-956-5746

Fax Number: (800)-245-7569

www.kolpin.com

Email: customerservice@kolpin.com