



Analog control 0-10V
DMX512 Control

GoboScarabeus H250, D152

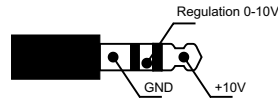


Your distributor :

**USER
MANUAL**

Programs 0-10V /M1-motor no.1, M2-motor no.2/

Program	description
1	basic mode /work during sound and change course/
2	M1 only to the left, M2 as a prg. 1
3	M1 only to the right, M2 as a prg. 1
4	as a prg. 1 + adjusting of speed
5	M1 stops, M2 as a prg. 1
6	M1, M2 altered with stop
7	M1 as a prg. 1, M2 stops
8	M1 as a prg. 1 M2 only to the right
9	M1 as a prg. 1, M2 only to the left
10	rotation M1 to the left, M2 to the right + speed adjusting
11	break movement short fall time, function prg. 1
12	central stop without reaction (H250-BlackOut)



Functions of the control DMX channels

Mode full control DMX512 by signal /8DIP in condition ON/

Channel no.1	0-54	motor no.1 stops
	55-155	motor no.1 is rotating to the right/ 55 min. speed, 155-max. speed /
	156-255	motor no.1 is rotating to the left / 156 min.speed, 255 max.speed/
Channel no.2	0	BlackOut /disconnection light source /max. 50V/500W/, motors stop
	1-54	motor no.2 stops
	55-155	motor no.2 is rotating to the right /55 min.speed, 155 max.speed
	156-255	motor no.2 is rotating to the left /156 min.speed, 255 max.speed

Mode control adjusting 0-10V /8DIP in condition OFF/

Channel no.1	0-15	PRG1	16-39	PRG2	40-63	PRG3	64-79	PRG4
	80-95	PRG5	96-119	PRG6	120-135	PRG7	136-159	PRG8
	176-207	PRG10	208-223	PRG11	224-255	BlackOut, motors stop		

Channel no.2	0	BlackOut, motors stop
	1-255	light source lights

Maintenance

Disconnect the device from the mains before any maintenance work!
 To secure no failure operation and long lifetime it is essential to clean the device regularly. Dust with smoke from fog machines, air moisture and cigarette smoke is being built up on the body of the device, but mainly on optical system objective. Dust penetrates through the ventilator inside of the device and settles on internal optical

Before you initial start up this lighting, please read the following instructions carefully!

Important: Damages caused by the disregard of this user manual are not subject to warranty. We will not accept liability for any resulting defects or problems. There fore, it is absolutely necessary for you to follow the safety instructions and warning notes written in this manual. This lighting is only for power supply 230V/50Hz.

For safety reasons, unauthorized modifications are forbidden! Not only damages to the lighting can be the result of unauthorized use but also you may endanger your own and the safety of others. The electric connection must be carried out by qualified person. This devise is an effect lighting and was not designed for permanent use.

When you install the lighting, make sure that there is no highly Flammable material in between a distance of 1m (such as decoration articles, curtains, wooden ceiling etc.

Please keep away from children- lamp generates high temperature.

Lamps are not subject to warranty.

Ventilation

It is necessary to ensure cooling fans against their covering and secure the device to have admission of air. If temperature reach 77grd, thermal fuse placed in device will disconnect of the mains.

There is not possibility of returning the thermal fuse. Changing the thermal fuse is made by service. Never use device without thermal fuse!!!

Location

Don't install the device at places with mechanical shakings and vibrations, high dustiness or high temperature. Not keeping these conditions can lead to shorter lifetime or its damage.

DON'T expose the device to influence of water, rain or moisture. It could lead to electric shock or fire.

Supply voltage

Don't use any other supply voltage meant in technical specification and manufacture label. Not keeping proper supply voltage could lead to damaging the device, starting a fire or its wrong function.

Power cord

Check if power cord is not mechanical damaged and if it is connected properly. Check also if the socket is designed sufficiently for needed loading. Otherwise there is a danger of electric shock or a fire. Power cord must not be bent excessively, led through sharp edges or given to mechanical stress. Don't pull the supply lead out by the flex but only by the plug. The device must always be connected behind the main switch. Do not touch the supply lead with wet hands, you are threatened by electric shock.

Other important cautions

Don't poke any objects into cooling fans and ventilator, it could lead to serious electric shock or damaging the device. Be careful of no water or other liquid entering.

Maintenance and cleaning

Don't use any solvent and similar chemicals which could damage surface finish or

some parts of device. Use soft and smooth cloth for cleaning optical parts of device and its surface. Never use washing powders or other cleaning agents with grinding effect. Connect the device to power supply after complete drying.

Service

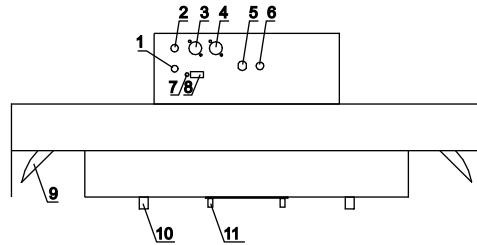
Never try to repair, dismantle or do some construction changes in case of any failure. Always consult qualified employee or dealer. Not keeping this rule you can suffer dangerous electric shock. Disconnect the device from mains before replacing the lamp or dismantling the housing. Not keeping this procedure you can suffer dangerous electric shock.

Always replace the lamp by consistent with used type or its equivalent.

Unplug mains lead before opening the housing and cleaning internal parts of device. /optical system, dichroic filters, etc. / You can suffer dangerous damage of sight by discharge light and electric shock.

Description of the device

- 1 external input 0-10V
- 2 microphone
- 3 XLR /DMX input/
- 4 XLR /DMX output/
- 5 Power cord
- 6 fuse
- 7 LED diode / indication of condition/
- 8 DIP switch / function adjusting/
- 9 reflex parabola
- 10 Focus
- 11 cover screw / for changing light source /



Unpacking

Unpack the device and after acclimatisation take off the protective foil. Make sure that there are no damages caused by transportation.

Installation

The device can be installed in any position without altering its operation. For mounting use bracket of device, which is a mounting hole in. First make sure that the structure you are going to attach the projector is secure.

When installing the projector over the ground use the safe chain and steel-wire rope as a double protection against falling down. Make sure the housing is closed firmly with the screw tightened up.

It is necessary to ensure cooling fans against their covering / curtains etc./ and secure ventilator and cooling fans to have admission of air.

Before opening the housing always disconnect the device from mains / power cord must be unplugged from the socket/. Otherwise you can be set to dangerous electric shock.

The device is supplied from manufacturer without light power. These are types of light power recommended by manufacturer.

version H250- hal. lamp 24V/250W G/Y/ 6,35

version D152- discharge tube HTI152W G9,5

Procedure

- ◇ Loose fastening screw /11/
- ◇ Pull out the upper cover
- ◇ If you replace the lamp, first take out original one you used before
- ◇ Insert new lamp into the socket. Never touch the glass-bulb discharge lamp bare-handed, always use bulbs cover or dry cotton cloth or gloves.
- ◇ Make sure that the lamp is installed tightly.
- ◇ Close the cover and tighten fastening screw /11/.

Connection to the mains

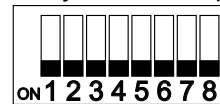
The device must always be connected behind the main switch .

Connection to the control signal

Each function of device is addressed according to standard protocol DMX 512 /1990/4 ms. It means, we can control this device by any other device, which provides signal included in protocol DMX 512 by serial line. Connection is secured provided by screened double-line ended by connector JACK 6,35 /1/4". If cable is not connected to external input 0-10V, the device works according to program 1 /if 7DIP switch is adjusted well OFF/ and works according coming sound pulses. If signal DMX 512 is connected to XLR input and if 7DIP is adjusted well-ON , functions controlled by 2 DMX consecutive channels.

The device offers you several procedure

- ◇ without controller connection /0-10V, DMX512/ - motors are rotating to the left or right /PRG1/ according coming pulses
- ◇ with controller connection 0-10V- you have possibilities to adjust one of 12 built in programs and to switch off light source / only hal.lamps to 50V and 500W/, look at programs 0-10V
- ◇ with controller connection DMX512- you have possibility in dependance of 8DIP switch to stimulate controlling as a memory 0-10V / it is 12 programs+BlackOut/, or to adjust course, speed and switching light source.



DIP switch no.

- 1-6 DMX address /schedule/
- 7 Analog /OFF/ DMX512/ON controlling
- 8 full DMX controlling /ON/12 programs

Addressing of the device	DIP1	DIP2	DIP3	DIP4	DIP5	DIP6
Address 1	ON	ON	ON	ON	ON	ON
Address 2	OFF	ON	ON	ON	ON	ON
Address 3	ON	OFF	ON	ON	ON	ON
Address 4	OFF	OFF	ON	ON	ON	ON
Address 5	ON	ON	OFF	ON	ON	ON
Address 6	OFF	ON	OFF	ON	ON	ON

Addressing of the device you make by summary single DIP and by deduction 1. e.g.if you want to address the device no. 30, adjust by DIP 29.

example switch	DIP1	DIP2	DIP3	DIP4	DIP5	DIP6	value
1	1	2	4	8	16	32	