

Always there to help you

Register your product and get support at
www.philips.com/welcome



GoGEAR

SA4RGA02

SA4RGA04

SA4RGA08



User manual

PHILIPS

Contents

1	Important safety information	3
	General maintenance	3
	Recycling the product	5
2	Your new player	7
	What's in the box	7
	PC software loaded on the player	7
	Files loaded on the player	7
	Overview	8
	Controls	8
	Home screen	8
	Lock/unlock the keys	9
	Screen on/off	9
3	Get started	10
	Charge power	10
	Charge through a USB AC/DC adapter	10
	Switch the player on or off	10
	Automatic standby and shut-down	10
4	Music	11
	Transfer music to the player	11
	Find music on the player	11
	Find music by song information	11
	Find music by playlist	11
	Find music by file folder	11
	Play music	11
	Select play options	12
	Playlists	12
	Add songs to a playlist-on-the-go	12
	Remove songs from a playlist-on-the-go	12
	Delete songs from the player	12
5	Audiobooks	13
	Sync audio books to the player	13
	Install AudibleManager on the PC	13
	Download audiobooks to the PC	13
	Sync to the player	13
	Find audiobooks on the player	14
	Play audiobooks	14
	Delete audiobooks from the player	14
6	Folder view	15
7	Settings	16
	Play mode	16
	Sound settings	16
	Sleep timer	16
	Display settings	16
	Theme	16
	Screen off timer	16
	Language	16
	Information	17
	Format device	17
	Factory settings	17
8	Sync with PC music library through Philips Songbird	18
	Install Philips Songbird	18
	Collect music files from the PC	18
	Set the watch folder	18
	Import media files	19
	Get contents from online sources	20
	Search online	20
	Create playlists in Philips Songbird	20
	Create a playlist	20
	Generate LikeMusic playlists	21
	Save the play queue as a playlist	22
	Play a playlist	23
	Manage media files in Philips Songbird	23
	Edit metadata	23
	Remove media files from the library	23
	Sync the player with Philips Songbird	24
	Select auto or manual sync	24
	Auto sync	24
	Manual sync	25
9	Update the firmware through Philips Songbird	26
10	Repair the player through Philips Songbird	27

11 Technical data	28
PC requirements	28

Need help?

Please visit

www.philips.com/welcome

where you can access a full set of supporting materials such as the user manual, the latest software updates, and answers to frequently asked questions.

1 Important safety information

General maintenance

The translation of this document is for reference only.

In the event of any inconsistency between the English version and the translated version, the English version shall prevail.

! Caution

- To avoid damage or malfunction:
- Do not expose the product to excessive heat caused by heating equipment or direct sunlight.
- Do not drop the product or allow objects to fall on your player.
- Do not allow the product to be submerged in water; Do not expose headphone socket or battery compartment to water; as water entering the set may cause major damage.
- Active mobile phones in the vicinity may cause interference.
- Back up your files. Ensure that you retain the original files you have downloaded to your device. Philips is not responsible for any loss of data if the product becomes damaged or not readable / legible.
- Manage (transfer, delete, etc.) your music files only with the supplied music software to avoid problems.
- Do not use any cleaning agents containing alcohol, ammonia, benzene, or abrasives as these may harm the product.
- Batteries (battery pack or batteries installed) shall not be exposed to excessive heat such as sunshine, fire or the like.
- Danger of explosion if battery is incorrectly replaced. Replace only with the same or equivalent type.

About operating and storage temperatures

- Operate in a place where temperature is always between 0 and 45°C (32 to 113°F)
- Store in a place where temperature is always between -20 and 45°C (-4 to 113°F).

- Battery life may be shortened in low temperature conditions.

Replacement parts/accessories:

Visit www.philips.com/support to order replacement parts/accessories.

Hearing Safety



A pleine puissance, l'écoute prolongée du baladeur peut endommager l'oreille de l'utilisateur.



! Warning

- To prevent possible hearing damage, do not listen at high volume levels for long periods.

The maximum output voltage of the player is not greater than 150 mV.

Wide band characteristic voltage WBCV:>= 75 mV

Modifications

Modifications not authorized by the manufacturer may void user's authority to operate the product.

Copyright information

All other brands and product names are trademarks of their respective companies or organizations.

Unauthorized duplication of any recordings whether downloaded from the Internet or made from audio CDs is a violation of copyright laws and international treaties.

The making of unauthorized copies of copy-protected material, including computer programs, files, broadcasts and sound

recordings, may be an infringement of copyrights and constitute a criminal offense. This equipment should not be used for such purposes.

The Windows Media and the Windows logo are registered trademarks of Microsoft Corporation in the United States and/or other countries.

Be responsible! Respect copyrights.



Philips respects the intellectual property of others, and we ask our users to do the same. Multimedia content on the internet may have been created and/or distributed without the original copyright owner's authorization. Copying or distributing unauthorized content may violate copyright laws in various countries including yours.

Compliance with copyright laws remains your responsibility.

The recording and transfer to the portable player of video streams downloaded to your computer is intended only for use with public domain or properly licensed content. You may only use such content for your private, non-commercial use and shall respect eventual copyright instructions provided by the copyright owner of the work. Such instruction may state that no further copies shall be made. Video streams may include copy protection technology that prohibits further copying. For such situations the recording function will not work and you will be notified with a message.

Data logging

Philips is committed to improving the quality of your product and enhancing the Philips user experience. To understand the usage profile of this device, this device logs some info / data to the non-volatile memory region of the device. These data are used to identify and detect any failures or problems you as a user may experience while using the device. The data

stored, for example, will be the duration of playback in music mode, duration of playback in tuner mode, how many times battery low was encountered, etc. The data stored do not reveal the content or media used on the device or the source of downloads. The data stored on the device are retrieved and used ONLY if the user returns the device to the Philips service center and ONLY to simplify error detection and prevention. The data stored shall be made available to user on user's first request.

Monkey's Audio decoder

- ① The Monkey's Audio SDK and source code can be freely used to add **APE format playback, encoding, or tagging support to any product, free or commercial. Use of the code for proprietary efforts that don't support the official APE format require written consent of the author.**
- ② Monkey's Audio source can be included in GPL and open-source software, although Monkey's Audio itself will not be subjected to external licensing requirements or other viral source restrictions.
- ③ Code changes and improvements must be contributed back to the Monkey's Audio project free from restrictions or royalties, unless exempted by express written consent of the author.
- ④ Any source code, ideas, or libraries used must be plainly acknowledged in the software using the code.
- ⑤ Although the software has been tested thoroughly, the author is in no way responsible for damages due to bugs or misuse.

If you do not completely agree with all of the previous stipulations, you must cease using this source code and remove it from your storage device.

FLAC decoder

Copyright (C) 2000,2001,2002,2003,2004,2005, 2006,2007,2008,2009 Josh Coalson

Redistribution and use in source and binary forms, with or without modification, are permitted provided that the following conditions are met:

- Redistributions of source code must retain the above copyright notice, this list of conditions and the following disclaimer.
- Redistributions in binary form must reproduce the above copyright notice, this list of conditions and the following disclaimer in the documentation and/ or other materials provided with the distribution.
- Neither the name of the Xiph.org Foundation nor the names of its contributors may be used to endorse or promote products derived from this software without specific prior written permission.

THIS SOFTWARE IS PROVIDED BY THE COPYRIGHT HOLDERS AND CONTRIBUTORS "AS IS" AND ANY EXPRESS OR IMPLIED WARRANTIES, INCLUDING, BUT NOT LIMITED TO, THE IMPLIED WARRANTIES OF MERCHANTABILITY AND FITNESS FOR A PARTICULAR PURPOSE ARE DISCLAIMED. IN NO EVENT SHALL THE FOUNDATION OR CONTRIBUTORS BE LIABLE FOR ANY DIRECT, INDIRECT, INCIDENTAL, SPECIAL, EXEMPLARY, OR CONSEQUENTIAL DAMAGES (INCLUDING, BUT NOT LIMITED TO, PROCUREMENT OF SUBSTITUTE GOODS OR SERVICES; LOSS OF USE, DATA, OR PROFITS; OR BUSINESS INTERRUPTION) HOWEVER CAUSED AND ON ANY THEORY OF LIABILITY, WHETHER IN CONTRACT, STRICT LIABILITY, OR TORT (INCLUDING NEGLIGENCE OR OTHERWISE) ARISING IN ANY WAY OUT OF THE USE OF THIS SOFTWARE, EVEN IF ADVISED OF THE POSSIBILITY OF SUCH DAMAGE.

Recycling the product

Your product is designed and manufactured with high quality materials and components, which can be recycled and reused.

When you see the crossed-out wheel bin symbol attached to a product, it means the product is covered by the European Directive 2002/96/EC:



Never dispose of your product with other household waste. Please inform yourself about the local rules on the separate collection of electrical and electronic products. The correct disposal of your old product helps prevent potentially negative consequences on the environment and human health.

Warning

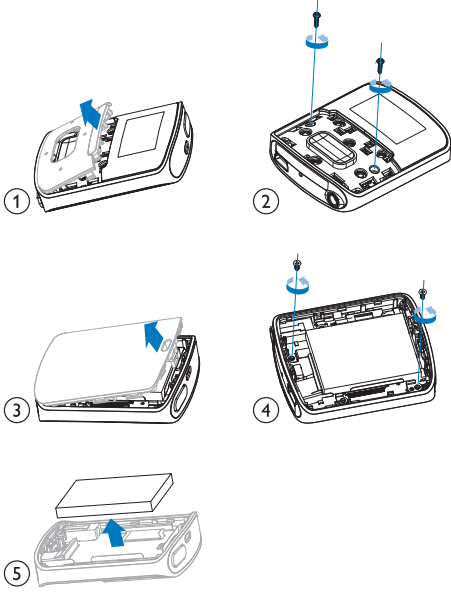
- Removal of the built-in battery invalidates the warranty and can destroy the product.
- The following removal and disposal instructions are steps that are to be performed at the end of the product's life only.

Your product contains a built-in rechargeable battery covered by the European Directive 2006/66/EC, which cannot be disposed of with normal household waste.



To safeguard the functionality and safety of your product, take your product to an official

collection point or service center where a professional can remove the battery as shown:



Please inform yourself about the local rules on separate collection of batteries. The correct disposal of batteries helps prevent potentially negative consequences on the environment and human health.

Notice for the European Union

This product complies with the radio interference requirements of the European Union.

2 Your new player

Note

- The images serve as reference only. Philips reserves the right to change color/design without notice.

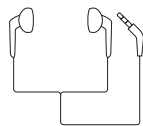
What's in the box

Make sure that you have received the following items:

Player



Earphones



USB cable



Quick start guide



Safety and Warranty sheet



PC software loaded on the player

RAGA comes with the following PC software:

- **Philips Songbird** (helps you update the firmware of the player; and manage your media library on a PC and the player).

To get **Philips Songbird** online,

- On your PC, go to www.philips.com/Songbird or www.philips.com/support.

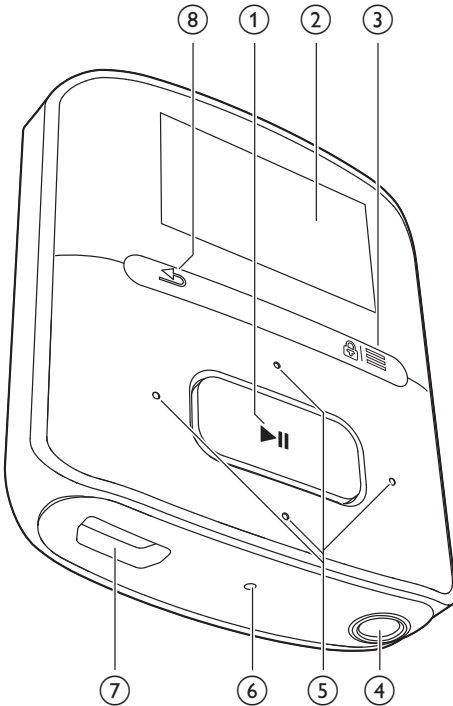
Files loaded on the player

The following files are loaded on **RAGA**:

- User manual
- Frequently asked questions

Overview

Controls



- ① **▶||**
 - Press and hold: Switch the player on or off
 - Press: Select options, or start/pause/resume play
- ② **Display**
- ③ **🔒 / ☰**
 - Press: Show options menu
 - Press and hold: Lock/unlock all buttons
- ④ **🎧**
 - 3.5-mm headphone connector
- ⑤ **⏪ / ⏩**
 - **on the list of options:**
Press: Skip to the previous/next option
 - **on the play screen:**

Press: Increase/decrease the volume
Press and hold: Increase/decrease the volume quickly



- **on the play screen:**
Press: Skip to the next/previous option
Press and hold: Search within current file

⑥ **RESET**

- Press the hole by using the tip of a ball pen when the screen does not respond to the pressing of keys

⑦ **🔌**

- USB connector for power charging and data transfer

⑧ **↶**

- Press: Back one level

Home screen

Menu	Mode	To
🎵	Music	play music and audiobooks
📁	Folder view	view files in folders
⚙️	Settings	customize the settings of RAGA

Navigate from the Home screen

- From the Home screen, you can access functional menus by pressing the navigation buttons **⏪ / ⏩** and **▶||**.
- To go back to previous screens, press **↶** repeatedly.

Switch between the Home screen and play screen

- On the Home screen, press **☰** and select **[Now playing]** or **[Last played]**;
- On the play screen, press **↶** repeatedly.



Select a theme

To select a theme for the display,

- On the Home screen, press **☰** and select **[Theme]**.

Lock/unlock the keys

When the player is on, use the lock to prevent accidental operation.

- Press and hold  /  to lock or unlock the keys.
 - ↳ All buttons except the volume keys are locked and a lock icon is displayed.

Screen on/off

To save power, the screen switches off automatically after the pre-defined time duration if

- no new action is taken on **RAGA**; and
- a value is selected in * > **[Display settings]** > **[Backlight timer]**.

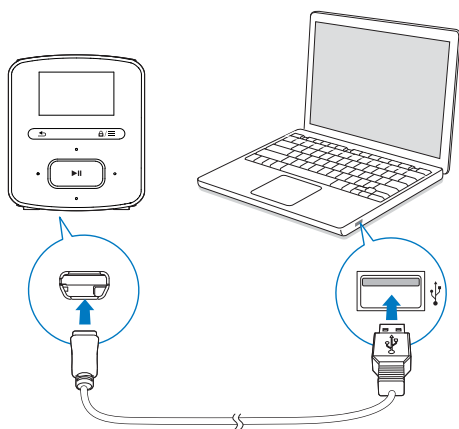
To exit the power-saving mode

- Press any key.

3 Get started

Charge power


RAGA has a built-in battery that can be charged through the USB socket of a computer. Connect RAGA to a PC by using the USB cable.



Note

- When you connect RAGA to a computer, you are briefly prompted to select: [Charge & transfer] or [Charge & play].
- RAGA automatically applies [Charge & transfer], if no new selection is made.

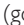
Battery level indication

- When the battery is low, the low battery screen is displayed repeatedly.
- When the charging process is complete,  is displayed.

Note

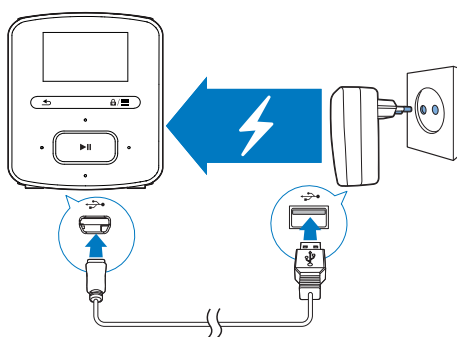
- Rechargeable batteries have a limited number of charge cycles. Battery life and number of charge cycles vary by use and settings.

To conserve battery power and increase the play time, do the following on RAGA:


- Set the backlight timer to a low value (go to  > [Display settings] > [Backlight timer]).

Charge through a USB AC/DC adapter

To charge RAGA through a USB AC/DC adapter, use **Philips AY5800** (Input: 100 - 240 V, ~50/60 Hz, 0.15 A; Output: 5.0 V, 0.5A).



Switch the player on or off

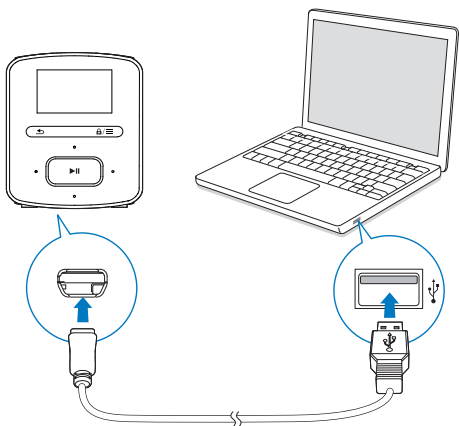
Press and hold  until the player is switched on or off.

Automatic standby and shut-down

The player has an automatic standby and shut-down feature that can save battery power. After 10 minutes in idle mode (no play, no button is pressed), the player switches off.

4 Music

Transfer music to the player



You can transfer music from your PC media library to **RAGA** in the following ways:

- Sync through Philips Songbird (see 'Sync with PC music library through Philips Songbird' on page 18); With the media management software, you can access online music stores, create playlists, or edit your music collection by song information.
- Drag and drop music files in Windows Explorer.
By doing so, you can organize your music collection by file folder.

To drag and drop music files in Windows Explorer,

- 1** Connect **RAGA** to a PC.
- 2** On the PC, under **My Computer** or **Computer**,
 - select **RAGA**, and create file folders.
- 3** On the PC, drag and drop music files to the file folders on **RAGA**.
 - Alternatively, drag and drop file folders from the PC to **RAGA**.

Find music on the player

On **RAGA**, you can find music by song information, playlist, or file folder.

Find music by song information

In **🎵**, songs are sorted by metadata or ID3 tag under different collections: **[All songs]**, **[Artists]**, **[Albums]**, or **[Genres]**.

[All songs]

- Songs are sorted by song title in alphabetical order.

[Artists]

- Songs are sorted by artist in alphabetical order;
- Under each artist, songs are sorted by album in alphabetical order.

[Albums]

- Songs are sorted by album in alphabetical order.

[Genres]

- Songs are sorted by genre, such as pop, rock.

Find music by playlist

In **🎵** > **[Playlists]**, find the playlist that you transfer from the PC media library.

Find music by file folder

In **📁**, find music by file folder.

Play music

You can start play from a song, or play an entire album or artist.

To start play from a song,

- 1** Select a song.

- 2 Press ►► to start play.
↳ Play starts from current song.

To play the entire album or artist,

- 1 Select an album or artist.
- 2 Press ≡ > [Play].
- 3 Press ►► to start play.

On the play screen,



- Press ►► to pause and resume play.
- To go to the previous screen, press ⏪.
↳ The play screen returns a few seconds later.
↳ On the play screen, you can see the file information and play status.

To adjust the volume,

- Press 🔊 / 🔊.

To select a music file on the play screen,

- Repeatedly press 🔍 / 🔍.

To rewind or fast forward within current song,

- On the play screen, press and hold ⏮ / ⏭.

Select play options

On the play screen, press ≡ to select play options, such as play mode, sound settings, and sleep timer (see 'Settings' on page 16).

Playlists

On the players, you can find the following playlists:

- playlists that you transfer from the PC media library;
- three playlists-on-the-go for you to add songs on the player.

Add songs to a playlist-on-the-go

To add current song to a playlist,

- 1 Play a song.
- 2 On the play screen,
 - press ≡ and select [Add to playlist].
- 3 Select a playlist-on-the-go. Press ►►.
↳ You save current song to the playlist.

Remove songs from a playlist-on-the-go

Remove current song from a playlist

- 1 On the play screen, press ≡ > [Remove from Playlist].
- 2 Select a playlist-on-the-go. Press ►►.
↳ You remove current song from the selected playlist.

Remove all the songs in a playlist

- 1 Go to a playlist-on-the-go.
- 2 In the list of options, press ≡ and select [Clear playlist].
- 3 Press ►►.
↳ You remove all the songs from current playlist.

Delete songs from the player

To delete current song during play,

- On the play screen, press ≡ and select [Delete].
- Confirm as prompted.
↳ Current song is deleted from the player.

5 Audiobooks

Go to **M** > **[Audiobooks]** to play books in audio formats that you have downloaded from www.audible.com.

Sync audio books to the player

From www.audible.com, download and install the **AudibleManager** software on your PC. Through the software, you can

- download audiobooks from www.audible.com to your PC library of audio books;
- sync the audiobooks to your player.

Install AudibleManager on the PC

- 1 Connect your PC to the Internet.
- 2 From www.audible.com, download the **AudibleManager** software for MP3/ MP4 players.
- 3 Install the software on your PC:
 - On the setup screen, select **Philips GoGear (selected models)** from the drop-down list of listening devices;



- Follow onscreen instructions to complete the installation.

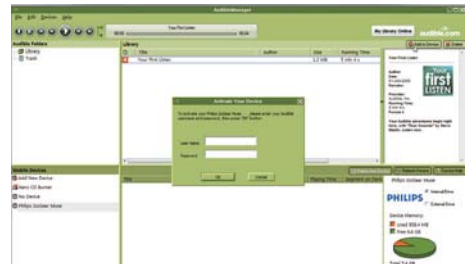
Download audiobooks to the PC

- 1 Connect your PC to the Internet.

- 2 Launch **AudibleManager** on your PC.
- 3 On **AudibleManager**, click the **My Library Online** button to connect to www.audible.com.
- 4 Select and download audio books:
 - Log in to your account with www.audible.com;
 - Download audio books in the format of **4** or **e**.
 - ↳ The downloaded books are automatically added to your library on **AudibleManager**.

Sync to the player

- 1 Launch **AudibleManager** on your PC.
- 2 Connect the player to the PC. Wait till the player is recognized by **AudibleManager**.
- 3 On **AudibleManager**, click **Add to Device**.
 - The first time you connect the player to **AudibleManager**, activate the player as prompted.



To check the audio books transferred to the player,

See the player pane on **AudibleManager**.

- If necessary, click **Refresh Device**.

- Confirm as prompted.
 - ↳ Current audiobook is deleted from the player.

Find audiobooks on the player

In **♪** > **[Audiobooks]**, audiobook files are organized by book title or author:

[Books]

- Books are sorted by book title in alphabetical order.

[Authors]

- Books are sorted by author in alphabetical order.

Play audiobooks

1 Select a book.

2 Press **▶||** to start play.

- ↳ On the play screen, you can see the book information and play status.

To resume the last played book,

- In **[Audiobooks]**, select **[Resume last]**.

On the play screen,

- Press **▶||** to pause and resume play.
- To go to the previous screen, press **↶**.
 - ↳ The play screen returns a few seconds later.

To skip titles or sections during play,

1 On the play screen, press **≡** > **[Navigation mode]**. Select **[Titles]** or **[Section]**.

2 On the play screen, press **⏮** / **⏭**.

Delete audiobooks from the player

- On the play screen, press **≡** > **[Delete]**.

6 Folder view

Go to ■ to view and play media files from the media library on the player.

Music: for music files that you sync to the player through **Philips Songbird**;

Playlists: for playlists that you sync to the player, and the playlists-on-the-go that you create on the player;

Service: for the audiobooks that you sync to the player through **AudibleManager**.

To find files that you have transferred in Windows Explorer,

- Locate the files as you have organized in Windows Explorer on the PC.

7 Settings

In *****, select your options for the player:

- 1 Press / to select an option.
- 2 Press to confirm.

Play mode

In **[Play mode]**, select play modes for music play:

[Repeat]

- **[Repeat 1]**: Repeats current song.
- **[Repeat all]**: Repeats all songs in current folder.

[Shuffle]

- **[On]**: Plays all songs in current folder in random order.

If both **[Repeat all]** and **[Shuffle]** are activated,

- All songs in current folder are repeated in random order.

Sound settings

In **[Sound settings]**, select your option for sound settings:

[FullSound]: Restores the sonic details that music compression loses (for example, MP3, WMA).

[Equalizer]: Defines sound settings as desired.

[Volume limit]: Sets a maximum volume level for the device. In this way, you can always keep the volume within a level safe enough to your hearing.

Press / to set the volume limit; Press to confirm.



Note

- Equalizer is deactivated when you select FullSound.

Sleep timer

Switch on the sleep timer. The **RAGA** can switch off automatically after a certain time duration.

- In **[Sleep timer]** > **[Set sleep timer...]**, select an option. Press .
 - ↳ After the selected time duration, the device is switched off automatically.

Display settings

Theme

In **[Display settings]** > **[Theme]**, select the theme for the display.

Screen off timer

The screen enters the idle mode, if no new action is taken on **RAGA**. After the pre-defined time duration, the idle screen is switched off automatically. To save battery power, select a low value for the time duration.

To set the time duration

- In **[Display settings]** > **[Backlight timer]**, select a time duration.
 - ↳ After the selected time duration, the idle screen is switched off automatically.

To exit the power-saving mode

- Press any key.

Language

In **[Language]**, select a language for the player.

Information

In **[Information]**, learn the following information about the player:

[Player information]

- **[Model:]** full product name
Check the full product name when you update firmware from the Support site.
- **[Firmware version:]** current firmware version
Check the firmware version when you update firmware from the Support site.
- **[Support site:]** Web page that provides support for the player

[Disk space]

- **[Free space:]** space available
- **[Total space:]** memory size
- **[Songs]** number of songs that are stored on the player

[File type supported] file formats that are supported on the player

Format device

Format the player. You remove all the data that are stored on the player.

- Select **[Format device]**, and press **▶||**.
- Confirm as prompted.

Factory settings

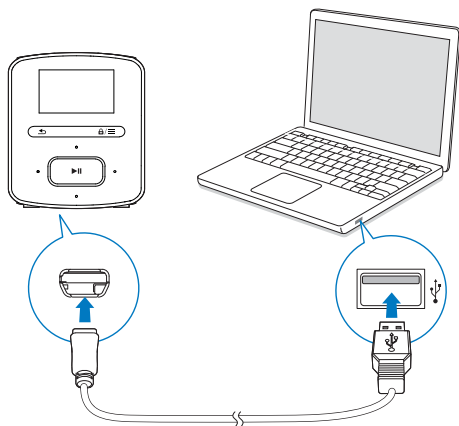
In **[Factory settings]**, restore the player to factory settings. Files transferred to the player are retained.

8 Sync with PC music library through Philips Songbird

With **Philips Songbird**, you can do the following:

- Manage your music collection on a PC;
- Sync **RAGA** with your PC music library;
- Register **RAGA** on www.philips.com/welcome;
- Update the firmware of RAGA (see 'Update the firmware through Philips Songbird' on page 26);
- Repair RAGA.

Install Philips Songbird



Install Philips Songbird for the first time

When you connect **RAGA** to a PC for the first time, a pop-up screen is displayed:

- 1 Select your language and country.
- 2 Follow the onscreen instructions to complete the installation.

Note

- The installation requires you to agree to the license terms.

If the pop-up screen is not displayed automatically:

- 1 On the player, make sure that you have selected the following options:
 - In * > [CD installer], select [Enable].
- 2 On the PC, select **My Computer** (Windows XP / Windows 2000) / **Computer** (Windows Vista / Windows 7).
↳ The **Philips Songbird** drive is displayed.
- 3 To start installation, double-click the **Philips Songbird** drive.

Note

- The installation requires you to agree to the license terms.

Collect music files from the PC

Set the watch folder

Create a central folder

You can have all music files automatically added to your library when you copy them to a folder. Creating a central folder is recommended. In **Philips Songbird**, set the central folder as the watch folder. Each time you launch **Philips Songbird**, songs are added to/ removed from **Philips Songbird** as they are on the central folder.

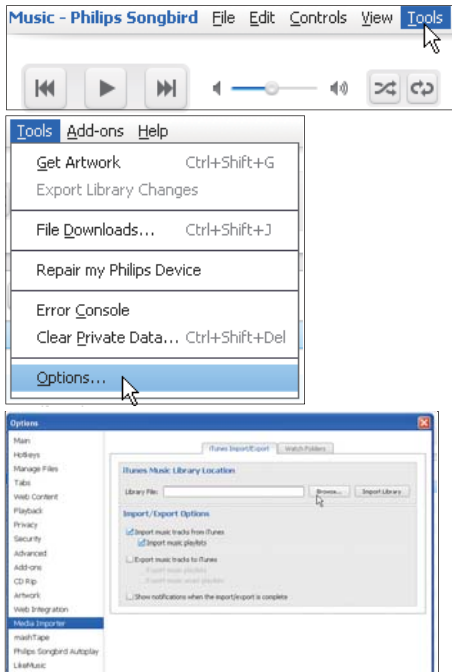
On the PC, create a central folder to save all music files, for example, D:\Songbird media.

First-time launch

The first time you launch **Philips Songbird** on a PC, do the following as prompted to import existing media files into **Philips Songbird**:

- Select the iTunes media folder to import an existing iTunes library;
- Select the central folder to search and import the existing music files.
 - ↳ The central folder is set as the watch folder of **Philips Songbird**.

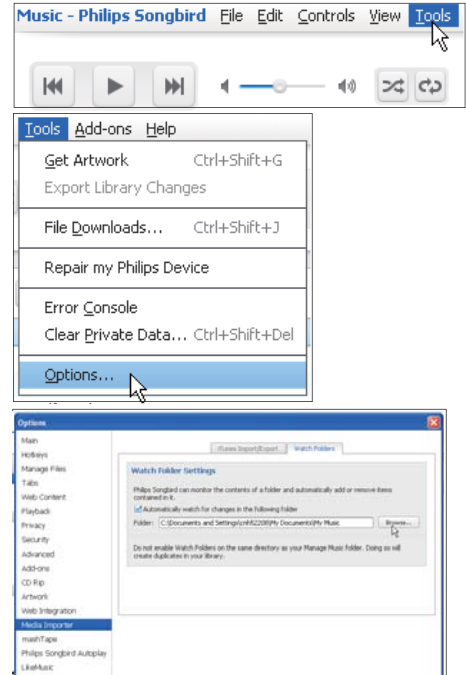
Set iTunes media folder



- 1 On **Philips Songbird**, go to **Tools > Options...**
- 2 Select **Media Importer**, and then the **iTunes Importer** tab.
- 3 Verify your library location and options.
- 4 Click the **Import Library** button next to the library location.
 - ↳ The software imports the iTunes library into **Philips Songbird**.

Set the watch folder

In **Philips Songbird**, set the watch folder as follows:



- 1 Select **Tools > Options**.
- 2 In **Options**, select **Media Importer**. Then, select the **Watch Folders** tab.
- 3 In **Watch Folders**, tick the check box as shown.
- 4 Click **Browse**, and select the central folder (e.g. D:\Songbird media) as the watch folder.
 - ↳ In **Philips Songbird**, media files are added or removed as they are in the central music folder.

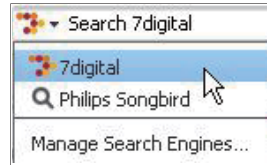
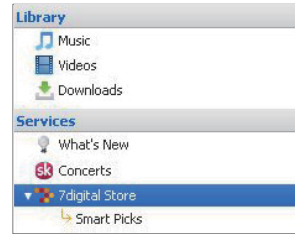
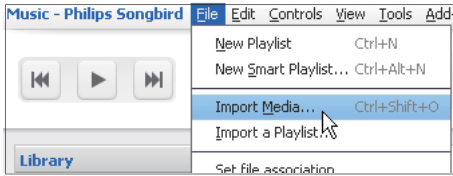
Import media files

Import media files from other folders

In **Philips Songbird**,

- go to **File > Import Media** to select folders on the PC.

- ↳ Media files are added under **Library**.
- or, go to **File > Import a playlist** to select playlists on the PC.
- ↳ Media files are added under **Playlists**.



Get contents from online sources

You can access and purchase content from online sources. Find the available online services under **Services** on the source selector pane.

Note

- Before you download or purchase content from online services, subscribe to the online service and log in to your account.
- Some of the services are available in certain countries.

Search online

- 1 Select an online service:
 - Select an option under **Services**;
 - Alternatively, in the search box, click the down arrow to select an online service.

- ↳ You enter the Web page of the online source.

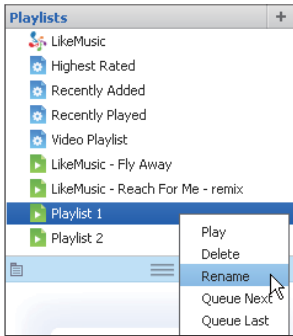
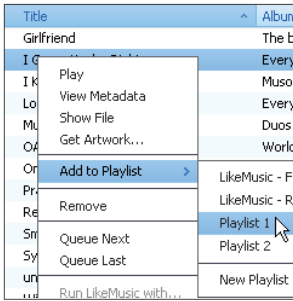
- 2 Search for your media file.
 - If necessary, use the search box to enter a keyword.

Create playlists in Philips Songbird

With a playlist, you can manage and sync your songs as needed.

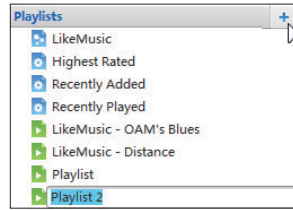
Create a playlist

Select songs that you want to play. Add the songs to a playlist.



- 1 In **Library** > **Music**, select songs.
 - To select multiple songs, hold down the **Ctrl** button when you click songs.
- 2 To add the songs to a playlist:
 - Right click on the songs, and select **Add to Playlist**;
 - Select a playlist;
 - ↳ The songs are added to the playlist.
 - To create a playlist, select **New Playlist**.
 - ↳ A new playlist is created for the songs.
 - ↳ Under **Playlists**, name the playlist as needed.

Alternatively,
Create a playlist. Add selected songs to the playlist.



- 1 Under **Playlists**, click **+** to create a playlist.
 - ↳ A new playlist is created.
- 2 Name the new playlist as desired.
- 3 Drag and drop media files to the playlist.



Tip

- To drag and drop multiple files at the same time, hold down the **Ctrl** button when you click on selections.

Generate LikeMusic playlists

Based on the **LikeMusic** analysis, a playlist can be generated from a seed song. **LikeMusic** analyzes songs in your library and, based on their music characteristics, creates relationships between them. These relationships help **LikeMusic** to create playlists of songs that sound great together. When you import songs into the music library of **Philips Songbird**, the **LikeMusic** analysis starts. For the song that completes the analysis, the **LikeMusic** icon lights up; For the song that cannot complete the analysis, the icon remains gray.

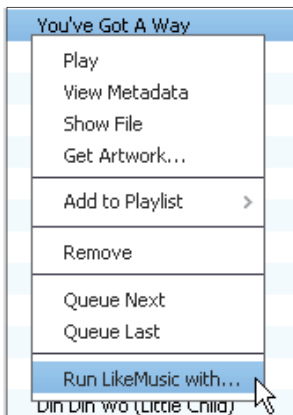


Select a seed song

Make sure that the seed song has completed the LikeMusic analysis.

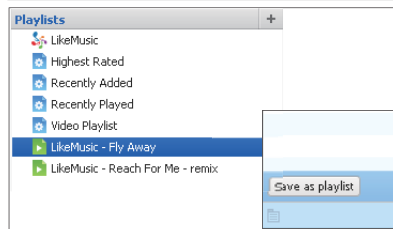
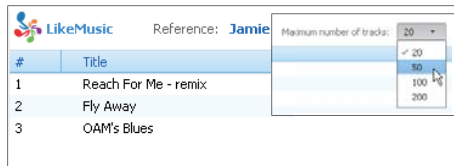
- In **Library > Music**, double click the blue LikeMusic icon of the song;

Alternatively,



- In **Library > Music**, right click on a song and select **Run LikeMusic with...**
↳ A LikeMusic playlist is displayed in the LikeMusic page.

Set the maximum number of songs



- Select a number in the drop-down list.

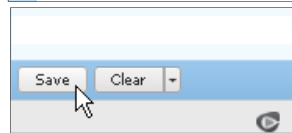
Save the LikeMusic playlist

- Click **Save as playlist** in the LikeMusic page.
↳ The LikeMusic playlist is saved under **Playlists**.

Save the play queue as a playlist

Create a play queue

- Drag and drop songs or playlists to the **Play Queue** pane.



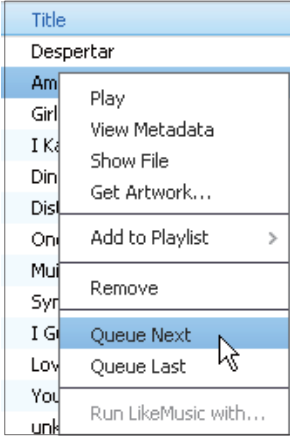
Save the play queue as a playlist

- Click **Save**.
↳ The play queue is saved as a playlist under **Playlists**.

2 Under **Playlists**, name the playlist as needed.

Add songs to the top or end of the play queue

- To add songs to the top, right click on the options and select **Queue Next**;
- To add songs to the end, right click on the options and select **Queue Last**.



Play a playlist

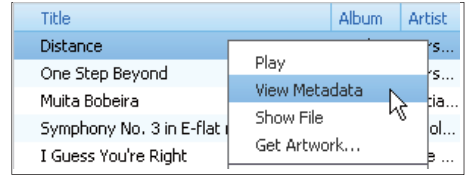
- 1 To play the entire playlist, right click on the playlist and select **Play**.
 - To start play from a song, double click on the song.
- 2 To select play options, click buttons on the player pane.

Manage media files in Philips Songbird

Edit metadata

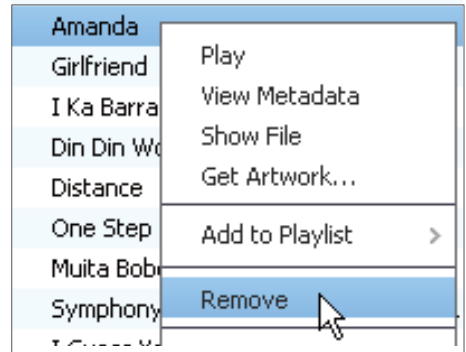
By editing file information (metadata or ID3 tag), you can have music files sorted automatically by song title, artist, album, and other information.

After you sync the media files to the player, you can browse the media library by metadata.



- 1 In **Library > Music**, select a music file.
- 2 Right click on the file to select **View Metadata**.
 - ↳ A metadata table is displayed for you to edit the information.

Remove media files from the library

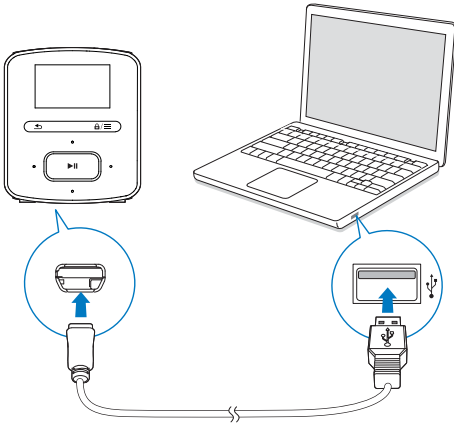


- 1 Right click on a media file. Select **Remove**.
- 2 Confirm as prompted.
 - ↳ The selected file is removed from the library and from all playlists. (By default, the file is only "removed", not "deleted". The file still exists in its original location on the computer or computer network.)

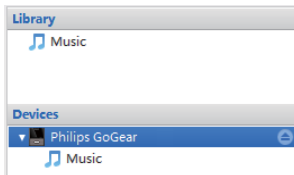
Tip

- To select multiple files, hold down the **Ctrl** button when you click on selections.
- To select multiple consecutive files, hold down the **Shift** button when you click on the first and last selections.

Sync the player with Philips Songbird



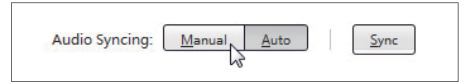
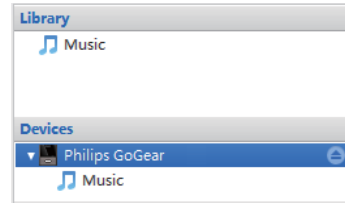
- 1 On the PC, launch **Philips Songbird**.
- 2 Connect the player to the PC by using the USB cable.
↳ On **Philips Songbird**, the player is displayed when it is recognized by the PC.



Select auto or manual sync

The first time you connect the player to **Philips Songbird**, select auto sync as prompted. The player sync with **Philips Songbird** automatically. If you do not select auto sync, you switch on the manual sync.

To select auto or manual sync,

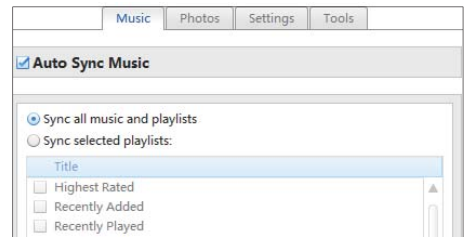
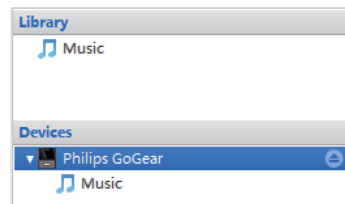


- 1 Select the player under **Devices**.
↳ A pop-up screen is displayed.
- 2 On the pop-up screen, select **Manual** or **Auto**.
- 3 To confirm the option, click **Apply**.

Auto sync

- If you have selected auto sync, auto sync starts automatically when you connect the player to a PC;
- Alternatively, select the player under **Devices**, and click **Sync**.

To select auto sync settings,



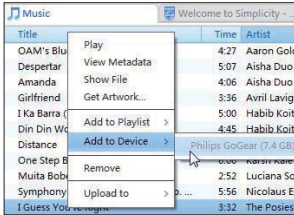
- 1 Select the player under **Devices**.
- 2 On the pop-up screen, click the **Music** tab.
- 3 Click to select an option.

Manual sync

To transfer selected playlists manually,

- 1 Select playlists.
- 2 Drag and drop the playlists to **RAGA**.

To transfer selected media files manually,



- 1 On the Content pane, right click on a selected media file.
- 2 Select **Add to Device > RAGA**.
↳ Selected files are transferred to **RAGA**.



Tip

- To select multiple files at the same time, hold down the **Ctrl** button when you click options.

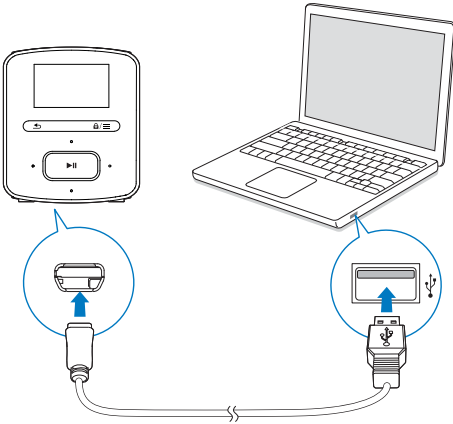
9 Update the firmware through Philips Songbird

RAGA is controlled by an internal program called firmware. Newer versions of the firmware may have been released after you have purchased **RAGA**.

Through **Philips Songbird**, you can check for and install firmware updates for **RAGA** over the Internet.

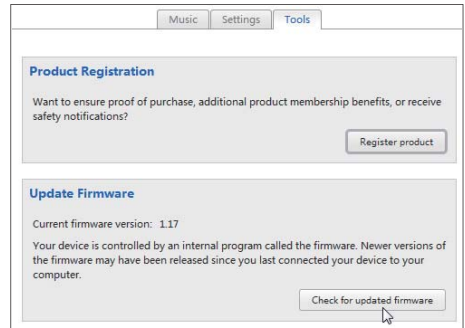
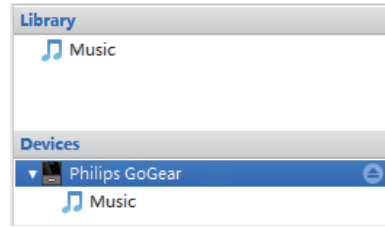
Tip

- Your music files are not affected by a firmware update.



- 1 Make sure that you have connected your PC to the Internet.
- 2 Connect **RAGA** to the PC by using the USB cable.
- 3 On the PC, launch **Philips Songbird**.
 - If necessary, click **Start > Programs > Philips > Philips Songbird**.

- 4 Click **RAGA** in the Player pane. Then, select **Tools > Check for updated firmware** in the pop-up window.
 - ↳ **Philips Songbird** checks for updates from the Internet.



- 5 Follow the onscreen instructions.
 - ↳ Downloading and installation of firmware update start automatically.
 - ↳ The **RAGA** restarts after the firmware is updated and is ready for use again.

Note

- Wait until the update is completed, then disconnect the **RAGA** from the computer.

10 Repair the player through Philips Songbird



Tip

- After you repair the player, the CD-ROM partition and the **Philips Songbird** installer are removed from the player. More space is available on the player.

If **RAGA** is not working properly or the display freezes, you can reset it without losing data:

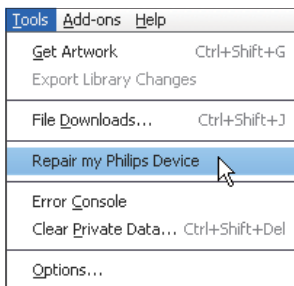
To reset RAGA?

- Insert a pen tip or other object into the reset hole at the base of **RAGA**. Hold until the player shuts down.

If you fail to reset the player, repair the player through Philips Songbird:

- 1 On your PC, launch **Philips Songbird**.
 - If your PC runs Windows 7, launch **Philips Songbird** as administrator. Right-click **Philips Songbird** and select **Run as Administrator**.

- 2 In **Philips Songbird**,



- select **Tools > Repair my Philips Device**;
 - select **RAGA** in the pop-up list.
- 3 Connect the player to the PC.
 - **Make sure that you follow the onscreen instructions on how to connect the player to the PC.**
 - 4 Follow the onscreen instructions to complete the repair.

11 Technical data

Power

- Power supply: 220 mAh Li-ion polymer internal rechargeable battery
- Play time¹
Audio (.mp3): up to 22 hours

Software

- Philips Songbird: To update firmware and transfer music

Connectivity

- Headphone 3.5 mm
- USB 2.0 High speed

Sound

- Channel separation: 45 dB
- Frequency Response: 20-18,000 Hz
- Output power: 2 x 2.4 mW
- Signal to noise ratio: > 84 dB

Audio playback

Supported formats:

- MP3
Bitrate: 8-320 kbps and VBR
Sampling rates: 8, 11.025, 16, 22.050, 32, 44.1, 48 kHz
- WMA (unprotected)
Bitrate: 10-320 kbps CBR, 32-192 kbps VBR
Sampling rates: 8, 11.025, 16, 22.050, 32, 44.1, 48 kHz
- FLAC
Sampling rates: 1-1,048 kHz
- APE
Sampling rates: 8-48 kHz
- WAV

Storage media

Built-in memory capacity²:

- SA4RGA02 2 GB NAND Flash
- SA4RGA04 4 GB NAND Flash
- SA4RGA08 8 GB NAND Flash

Media transfer³

- Songbird (sync)
- Windows Explorer (drag and drop)

Display

- Color LCD 128 x 64 pixels

Note

- Specifications are subject to change without notice.
- ¹ Rechargeable batteries have a limited number of charge cycles. Battery life and number of charge cycles vary by use and settings.
- ² 1 GB = 1 billion bytes; available storage capacity is less. Full memory capacity may not be available as some memory is reserved for the player. Storage capacity is based on 4 minutes per song and 128-kbps MP3 encoding.
- ³ Transfer speed depends on operating system and software configuration.

PC requirements

- Windows® XP (SP3 or above) / Vista / 7
- Pentium III 800 MHz processor or higher
- 512 MB RAM
- 500 MB hard disk space
- Internet connection
- Windows® Internet Explorer 6.0 or later
- CD-ROM drive
- USB port

