

Disclaimer

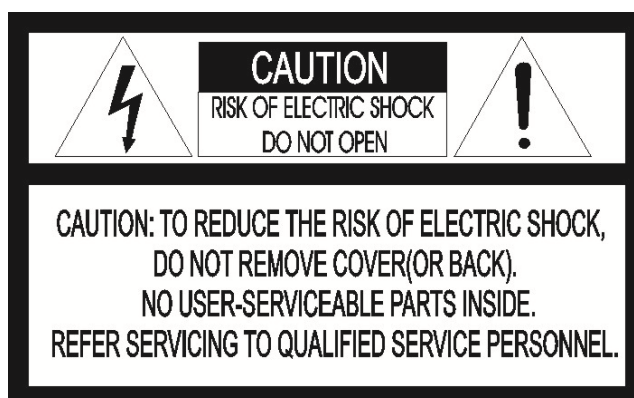
- While every effort has been made to ensure that the information contained in this guide is accurate and complete, no liability can be accepted for any errors or omissions
- NUVICO reserves the right to change the specifications of the hardware and software described herein at any time without prior notice.
- No part of this guide may be reproduced, transmitted, transcribed, stored in a retrieval system, or translated into any language in any form, by any means, without prior written permission of NUVICO.
- NUVICO makes no warranties for damages resulting from corrupted or lost data due to a mistaken operation or malfunction of the cameras, peripheral devices, or unapproved/unsupported devices.

Warning and Caution

WARNING!

TO REDUCE THE RISK OF FIRE OR ELECTRIC SHOCK, DO NOT EXPOSE THIS PRODUCT TO RAIN OR MOISTURE. DO NOT INSERT ANY METALLIC OBJECTS THROUGH THE VENTILATION GRILLS OR OPENINGS ON THE EQUIPMENT.

CAUTION!



The lightning flash with arrowhead symbol, within an equilateral triangle, is intended to alert the user to the presence of uninsulated “dangerous voltage” within the product’s enclosure that may be of sufficient magnitude to constitute a risk of electric shock to persons.



The exclamation point within an equilateral is intended to alert the user to the presence of important operating and maintenance (servicing) instructions in the literature accompanying the appliance.

FCC Compliance Statement

FCC INFORMATION: THIS EQUIPMENT HAS BEEN TESTED AND FOUND TO COMPLY WITH THE LIMITS FOR A CLASS A DIGITAL DEVICE, PURSUANT TO PART 15 OF THE FCC RULES. THESE LIMITS ARE DESIGNED TO PROVIDE REASONABLE PROTECTION AGAINST HARMFUL INTERFERENCE WHEN THE EQUIPMENT IS OPERATED IN A COMMERCIAL ENVIRONMENT. THIS EQUIPMENT GENERATES, USES, AND CAN RADIATE RADIO FREQUENCY ENERGY AND IF NOT INSTALLED AND USED IN ACCORDANCE WITH THE INSTRUCTION MANUAL, MAY CAUSE HARMFUL INTERFERENCE TO RADIO COMMUNICATIONS. OPERATION OF THIS EQUIPMENT IN A RESIDENTIAL AREA IS LIKELY TO CAUSE HARMFUL INTERFERENCE IN WHICH CASE THE USER WILL BE REQUIRED TO CORRECT THE INTERFERENCE AT HIS OWN EXPENSE.

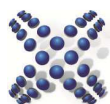
CAUTION: CHANGES OR MODIFICATIONS NOT EXPRESSLY APPROVED BY THE PARTY RESPONSIBLE FOR COMPLIANCE COULD VOID THE USER'S AUTHORITY TO OPERATE THE EQUIPMENT.

THIS CLASS A DIGITAL APPARATUS COMPLIES WITH CANADIAN ICES-003.
CET APPAREIL NUMÉRIQUE DE LA CLASSE A EST CONFORME À LA NORME NMB-003 DU CANADA.

CE Compliance Statement

WARNING

THIS IS A CLASS A PRODUCT. IN A DOMESTIC ENVIRONMENT THIS PRODUCT MAY CAUSE RADIO INTERFERENCE IN WHICH CASE THE USER MAY BE REQUIRED TO TAKE ADEQUATE MEASURES.



Important Safeguards

- Read these instructions.
- Heed all warnings.
- Follow all instructions.
- Do not use this equipment near water.
- Clean only with dry cloth.
- Do not block any ventilation openings. Install in accordance with the manufacturer's instructions.
- Do not install near any heat sources such as radiators, heat registers, stoves, or other equipment (including amplifiers) that produce heat.
- Do not defeat the safety purpose of the polarized or grounding-type plug. A polarized plug has two blades with one wider than the other. A grounding type plug has two blades and a third grounding prong. The wide blade or the third prong is provided for your safety. If the provided plug does not fit into your outlet, consult an electrician for replacement of the obsolete outlet.
- Protect the power cord from being walked on or pinched, particularly at plugs, convenience receptacles, and the point where they exit from the equipment.
- Only use attachments/accessories specified by the manufacturer.
- Unplug this equipment during lightning storms or when unused for long periods of time.
- Refer all servicing to qualified service personnel. Servicing is required when the equipment has been damaged in any way, such as power-supply cord or plug is damaged, liquid has been spilled or objects have fallen into the equipment, the equipment has been exposed to rain or moisture, does not operate normally, or has been dropped.
- **CAUTION - THIS MANUAL IS FOR USE BY QUALIFIED SERVICE PERSONNEL ONLY. TO REDUCE THE RISK OF ELECTRIC SHOCK DO NOT PERFORM ANY SERVICING OTHER THAN THAT CONTAINED IN THE OPERATING INSTRUCTIONS UNLESS YOU ARE QUALIFIED TO DO SO.**
- Use Certified/Listed Class 2 power supply transformer only.

Table of Contents

1. Introduction.....	5
About This Manual	5
1.1 Key features	5
1.2 Content Verification	6
1.3 EC-2M-F1N HD Camera Dimensions	7
2. Installation and Configuration	8
2.1 Overview	8
2.2 Installing Auto Iris Lens	11
2.3 Zoom lens back focus adjustment	12
2.4 Using Service Monitor Port and Wire Controller	13
2.5 Resetting to the Factory Default Settings	14
2.5 Typical Wiring Diagram	Error! Bookmark not defined.
3. Program and Operation	155
3.1 Detecting IP Cameras with IP Cam Finder	15
3.2 Access from a Web Browser	16
3.3 Access from the Internet.....	17
3.4 Setting the Admin Password Over a Secure Connection.....	17
3.5 Live View Page.....	18
3.6 Network Camera Setup	20



1. Introduction

About This Manual

Thank you for purchasing our EasyNet EC-2M-F1N-ONV HD Camera.

This full-featured camera comes equipped with a progressive scan imager, which transmits at high definition 1920 x 1080 resolution as well as enhances low light sensitivity and provides crystal clear pictures even in challenging lighting environments.

1.1 Key features

- Brilliant video image utilizing H.264 video compression.
- Triple network streams simultaneously in full Full HD (1920x1080), CIF (320x240) and MJPEG (320x240) for increased flexibility depending on the various environments.
- Power over Ethernet, utilizing 802.3af standards so that video and power can be used over single cable. No extra power outlet or power source is needed.
- For increased flexibility, the camera also comes equipped with 12 VDC & 24 VAC to be used with standard power supply or transformer when Power over Ethernet is not being used.

1. Introduction

1.2 Content Verification

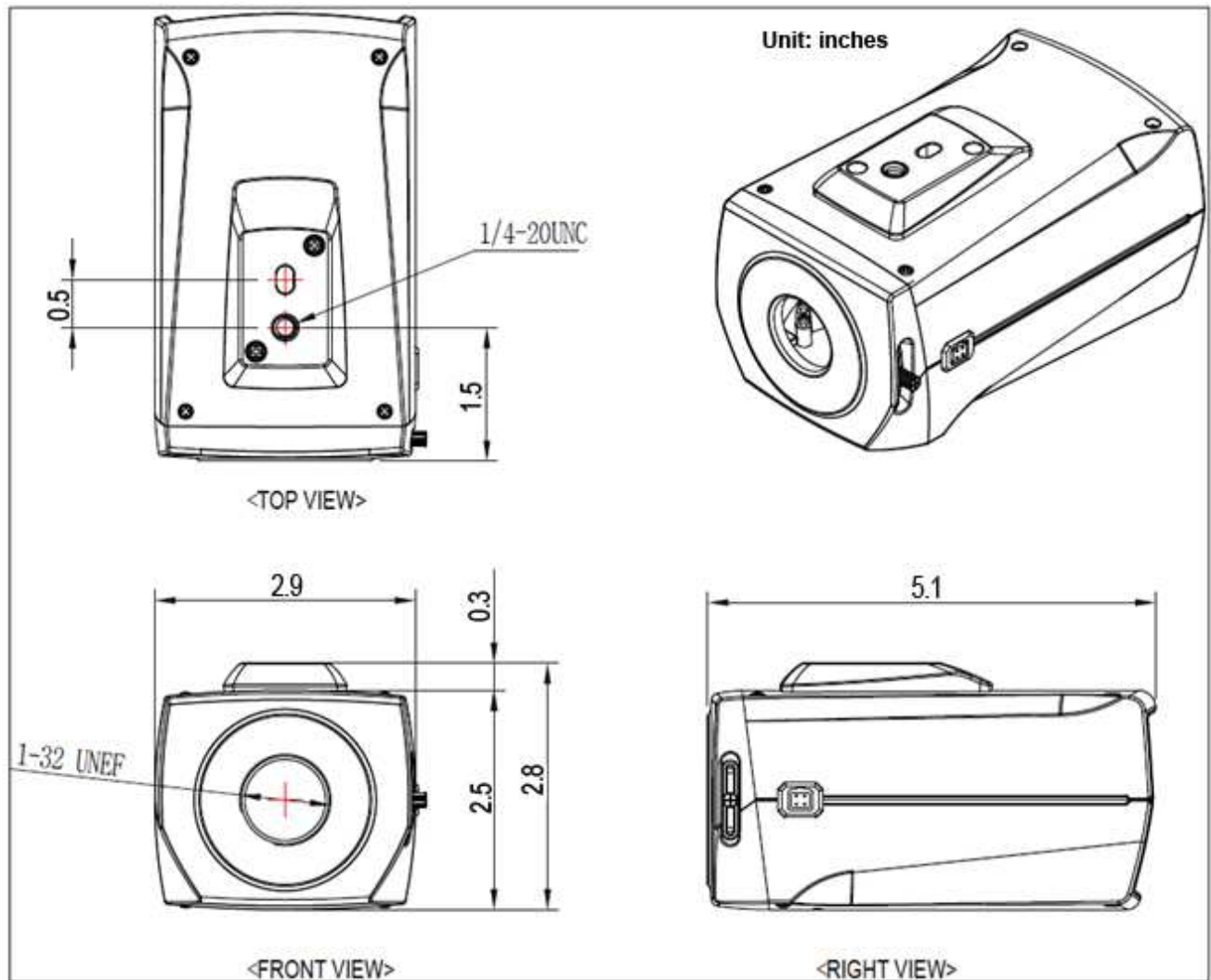
Before installing the camera, please make sure that all of the following items are included in the box.

1. EC-2M-F1N-ONV HD Camera
2. Installation Guide
3. Service Monitor Cable and Controller
4. Accessories Kit



1. Introduction

1.3 EC-2M-F1N-ONV HD Camera Dimensions



2. Installation and Configuration

2.1 Overview

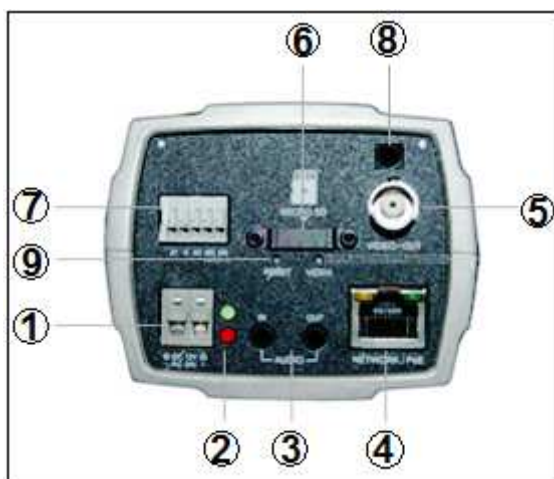
- Front View



NO	Function
1	Back Focus Adjustment Screw
2	Auto IRIS Lens Connector

2. Installation and Configuration

- Rear View



NO	Function	Description
1	Power Adaptor Terminal	Connects the supplied power adapter or an external power supply 12V DC or 24V AC, max. 4.0Watt.
2	Power Indicator(Green)	Indicates power input.
	Status Indicator(Red)	Indicates camera status.
3	Audio Input	Audio Input Stereo Jack
	Audio Output	Audio Output Stereo Jack
4	Network Connector (PoE)	RJ-45 port compatible with 10/100Mbps, which have a PoE function.
5	Video Output	Connects the video output. This BNC connector provides a 1.0Vp-p/75 ohms composite video signal.
6	Micro SD Card Slot	Card Slot for Micro SD. Open the protection cover with a supported tool to insert Micro SD card.
7	3pin Terminal IO	Connects alarm In/Out. **Disabled**
	2pin RS485 Terminal	Connects PT device. **Disabled**
8	Service Monitor Port	Connects to controller for setting ID and IP address if needed.
9	Reset Button	Executes the factory default.

Note: Video Output is only used for service purposes. To provide easy zoom and focus adjustment from one's service monitor when configuring the auto iris lens.

2. Installation and Configuration

- LED Indicators

LED	Color	Indication
Network	Green	Steady for connection to a 100 Mbit/s network. Flashes for network activity.
	Amber	Steady for connection to 10 Mbit/s network. Flashes for network activity.
	Unlit	No network connection.
Status	Red	Steady red for failed upgrade or booting.
Power	Green	Steady green for normal operation or booting. Flashes green during firmware upgrade.

Note: Steady green and red during booting. Flash green and red during factory default.



2. Installation and Configuration

2.2 Installing Auto Iris Lens

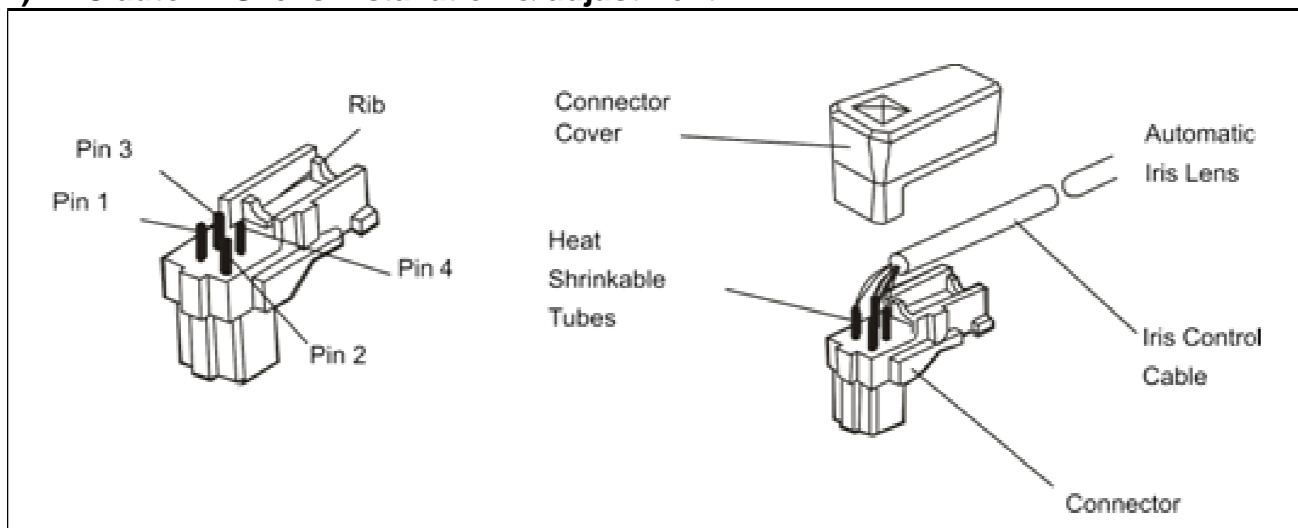
The lens is not supplied with this HD camera. Purchase a lens suitable for your requirements. This HD camera is compatible with c and CS mount type lenses.

Notes

- It is strongly recommended that you use Auto Iris Lens with DC type.
- If the lens is marked or smudged with any debris or fingerprint marks, the image quality can be poor.
- It is strongly recommended that you use mega-pixel lens that has the day/night IR correction functionality.

Installing Auto Iris Lens

2) DC auto IRIS lens installation & adjustment



1. Solder the lens control wires to the connector supplied with the camera.

Pin	Name	Wire Color
1	Damp Coil -	Blue
2	Damp Coil +	Red
3	Drive Coil +	White
4	Drive Coil -	Green



2. Installation and Configuration

2.3 Varifocal Lens Back Focus Adjustment



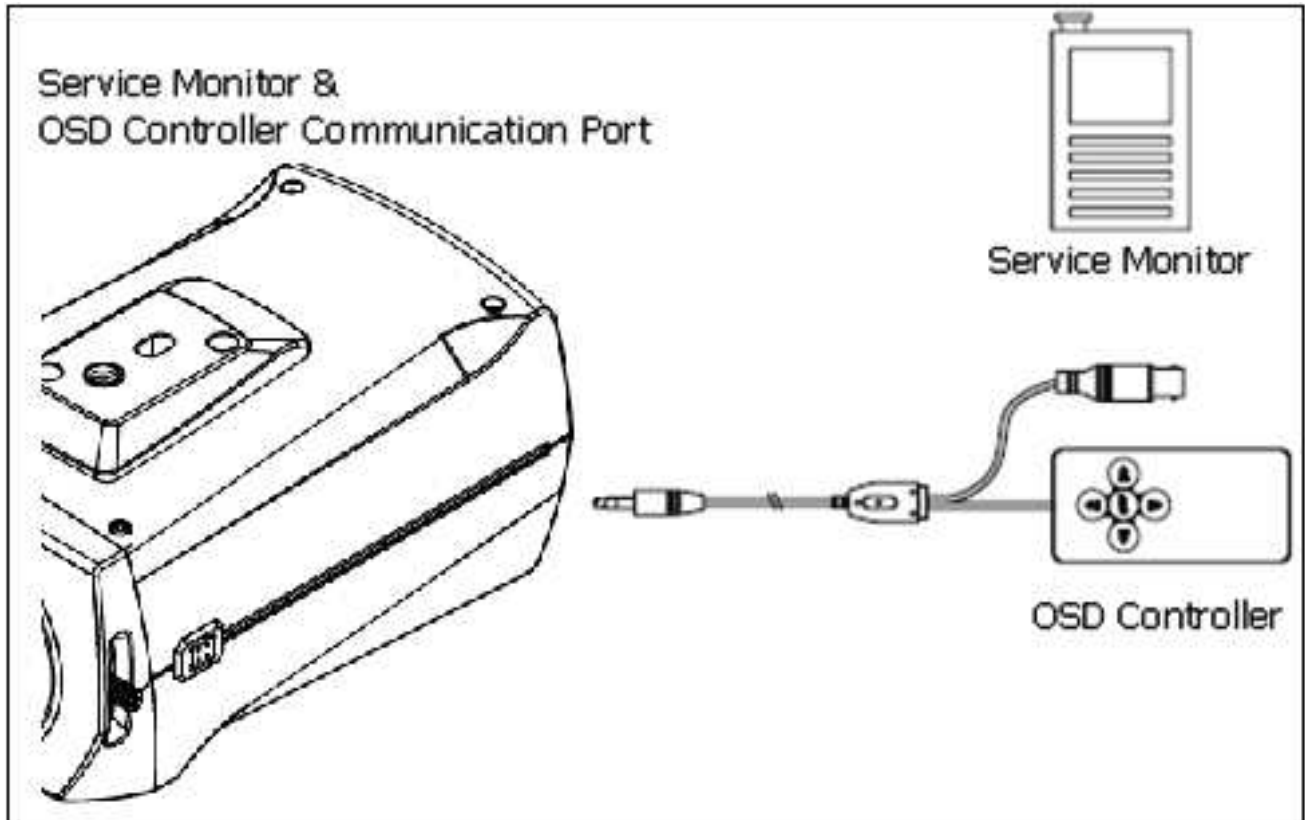
The objective of back focusing is to suit different types of lenses that are in the market. To obtain the maximum far (wide) or tele (narrow) view from particular lens, back focusing might be needed.

1. Choose an object at the farthest range.
2. Make sure the iris of the lens is wide open. Do this by adjusting the camera and its lens at night or place a welders glass in front of the lens to imitate the night environment.
3. Adjust the focus on the lens on its maximum “far” range.
4. Adjust the zoom on the lens on its maximum “wide” range.
5. Loosen the back focus lock screw.
6. Adjust the back focus ring for the clearest picture.
7. Tighten the back focus lock screw.
8. Repeat the previous steps as necessary to maintain a clear picture throughout the entire zoom range.

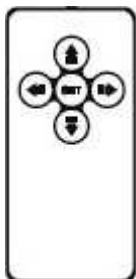


2. Installation and Configuration

2.4 Using Service Monitor Port and Wire Controller



Service monitor output port, similar to headphone jack is located along with series of input connectors where PoE and Power Input is. It is used for two purposes.



1. Using handheld service monitor, you can determine where the camera is pointing towards.

INFORMATION	
# ID	: 001
NAME	: EC-2M-F1N-ONV
IP	: 192.168.0.1
SAVE CANCEL	

2. Change Camera ID, and IP Address.

On rare instances, if you must, you can change the Name or Title and IP address of the camera.

Using the buttons on the controller, you can change the parameters.

Please consult with NUVICO Technical Support first before doing so since this can interrupt the communication to the recorder.



EasyNet
HD CAMERA

2. Installation and Configuration

2.5 Resetting to the Factory Default Settings

To reset the Network Camera to the original factory settings, use the Reset button on the network camera, as described below:

Using the Reset Button

Follow the instructions below to reset the HD Camera to the factory default settings using the Reset button.

1. Power off the HD Camera by disconnecting the power adapter or Cat5e/Cat6 network cable if it is connected to Power over Ethernet.
2. Remove the rear cap of the camera.
3. Press and hold the Reset button with a straightened paperclip while reconnecting the power.
4. Keep the Reset button pressed during about 2 seconds.
5. Release the Reset button.
6. The HD Camera resets to factory defaults and restarts after completing the factory reset.
7. Close the rear cap of the camera.

CAUTION: When performing a Factory Reset, you will lose any settings you have saved.

Please consult with NUVICO Technical Support first before doing so since this can interrupt the communication to the recorder.



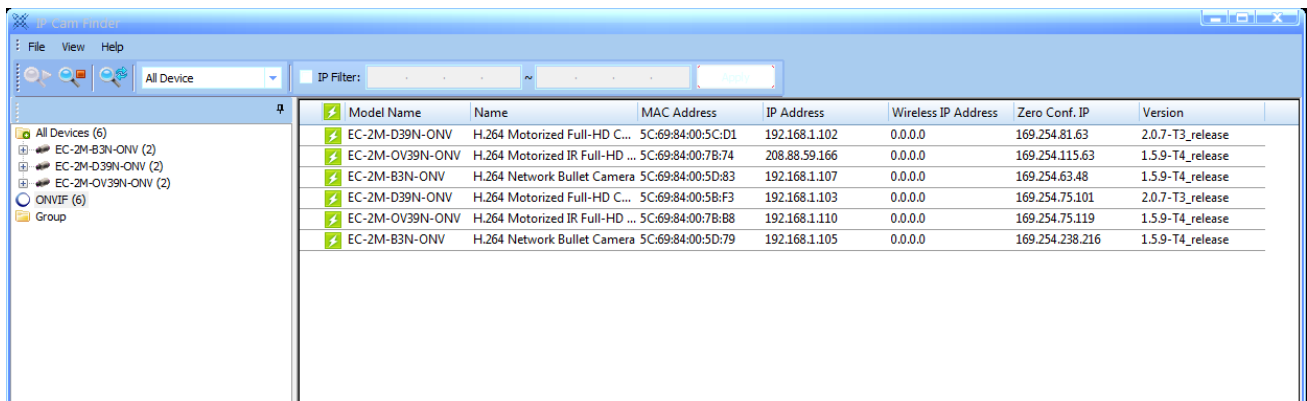
3. Program and Operation

3.1 Detecting IP cameras with IP Cam Finder

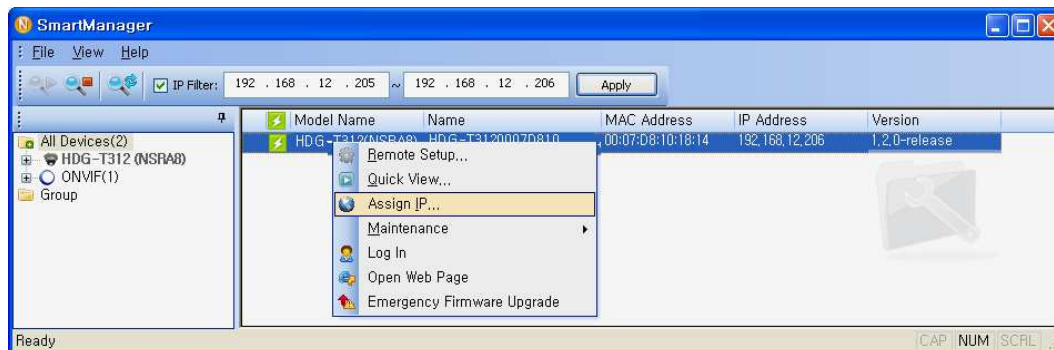
IP Cam Finder utility automatically discovers and displays NUVICO IP Cameras on your network. So please download the “IP Cam Finder” from <http://www.nuvico.com/downloadfile.htm?id=430>

The factory default IP is “192.168.30.220”.

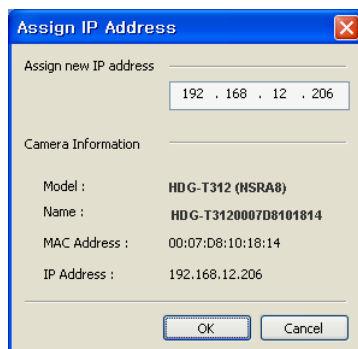
1. Connect the Network Camera to the network and power up.
2. Start IP Cam Finder utility (Start>All Programs> IP Cam Finder >IP Cam Finder), the main window will be displayed. After a short while, any network devices connected to the network will be displayed in the list.



3. Select the camera on the list, click the right-button of the mouse. You can see the pop-up menu as below.



4. Select Assign IP. You can see a Assign IP window. Enter the required IP address.



3. Program and Operation

The Network Camera can be used with Windows operating system and web browsers. The recommended web browsers are Internet Explorer, Safari, Firefox, Opera and Google Chrome with Windows.

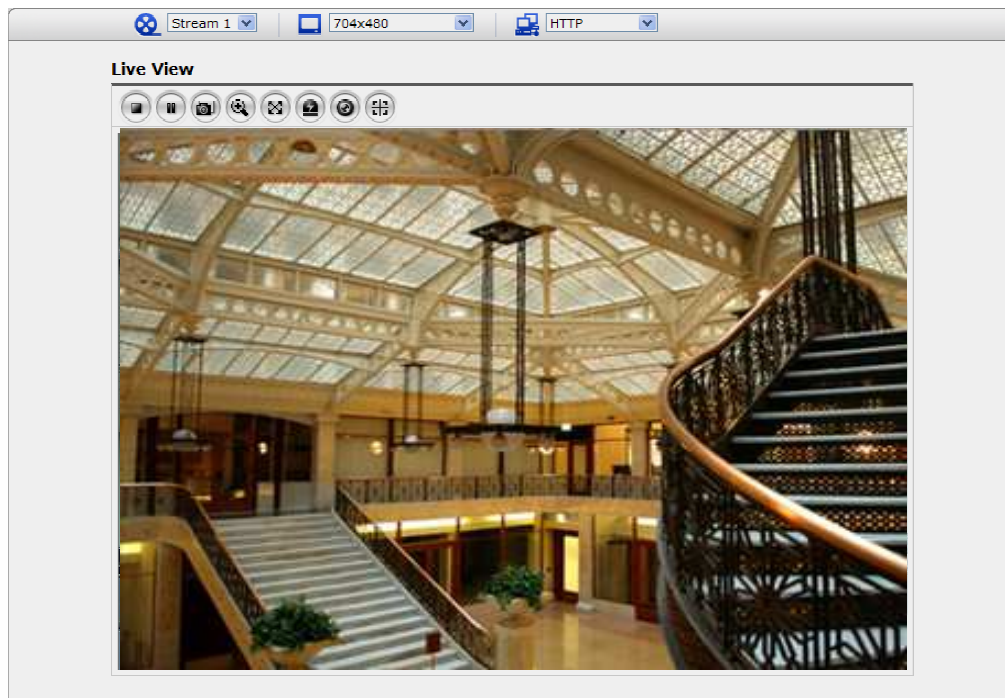
Note: To view streaming video in Microsoft Internet Explorer, set your browser to allow ActiveX controls.

3.2 Access from a web browser

1. Start a web browser.
2. Enter the IP address of the Network Camera in the Location/Address field of your browser.
3. You can see a starting page. Click Live View, Playback or Setup to enter web page.



4. The encoder's **Live View** page appears in your browser.



3.3 Access from the internet

Once the Network Camera is connected to the Internet, it is accessible on your local network (LAN). To access the video encoder from the Internet, you must configure your broadband router to allow incoming data traffic to the video encoder. To do this, enable the NAT-traversal feature, which will attempt to automatically configure the router to allow access to the video encoder. This is enabled from Setup > System > Network > NAT.

For more information, please see “3.5.4 System>Network>NAT” of User’s Manual.

3.4 Setting the admin password over a secure connection

To gain access to the product, the password for the default administrator user must be set. This is done in the “Admin Password” dialog, which is displayed when the network camera is accessed for the setup at the first time. Enter your admin name and password, set by the administrator.

Note: The default administrator username and password is “admin”. If the password is lost, the Network Camera must be reset to the factory default settings. See “3.8 Resetting to the Factory Default Settings” for more details.



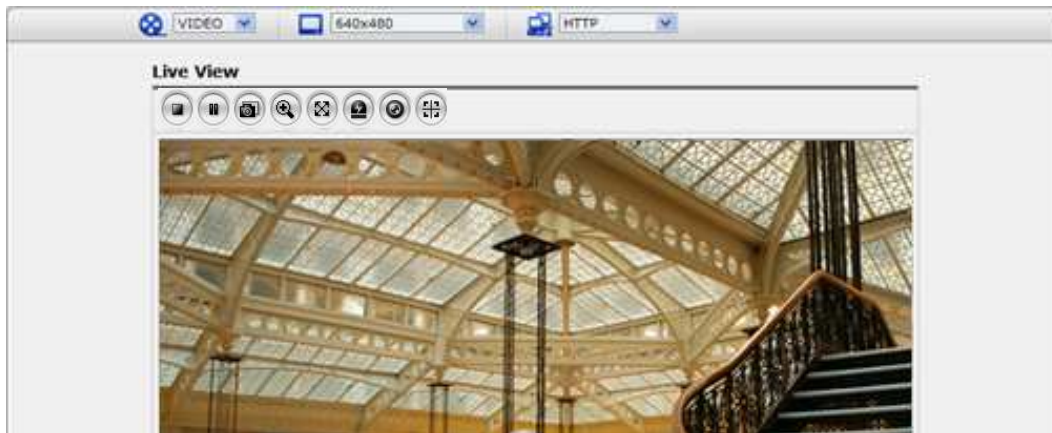
To prevent network eavesdropping when setting the admin password, this can be done via an encrypted HTTPS connection, which requires an HTTPS certificate (see note below).

To set the password via a standard HTTP connection, enter it directly in the first dialog shown below. To set the password via an encrypted HTTPS connection, see “3.5.4 System > Security > HTTPS”.

Note: HTTPS (Hypertext Transfer Protocol over SSL) is a protocol used to encrypt the traffic between web browsers and servers. The HTTPS certificate controls the encrypted exchange of information.

3.5 Live View Page

The live view page comes in several screen modes like 1920x1080, 1280x1024, 1280x720, 704x480(576), 640x480, 352x240(288), and 320x240. Users are allowed to select the most suitable one out of those modes. Please adjust the mode in accordance with your PC specifications and monitoring purposes.



1) General controls



Live View Page



Search & Playback Page



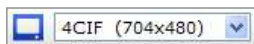
Setup Page



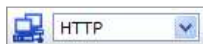
Help Page



The video drop-down list allows you to select a customized or pre-programmed video stream on the live view page. Stream profiles are configured under Setup > Basic Configuration > Video & Image. For more information, please see “3.5.1 Basic Configuration > Video & Image” of User’s Manual.



The resolution drop-down list allows you to select the most suitable one out of video resolutions to be displayed on live view page.



The protocol drop-down list allows you to select which combination of protocols and methods to use depends on your viewing requirements, and on the properties of your network.

2) Control toolbar

The live viewer toolbar is available in the web browser page only. It displays the following buttons:



The Stop button stops the video stream being played. Pressing the key again toggles the start and stop. The Start button connects to the network camera or start playing a video stream.



The Pause button pause the video stream being played.






The Snapshot button takes a snapshot of the current image. The location where the image is saved can be specified.



The digital zoom activates a zoom-in or zoom-out function for video image on the live screen.




-  The Full Screen button causes the video image to fill the entire screen area. No other windows will be visible. Press the 'Esc' button on the computer keyboard to cancel full screen view.
-  The Manual Trigger button activates a pop-up window to manually start or stop the event.
- The Remote Focus button enables users to adjust focus and zoom remotely via network.
-  The Smart Focus button readjusts focus automatically.

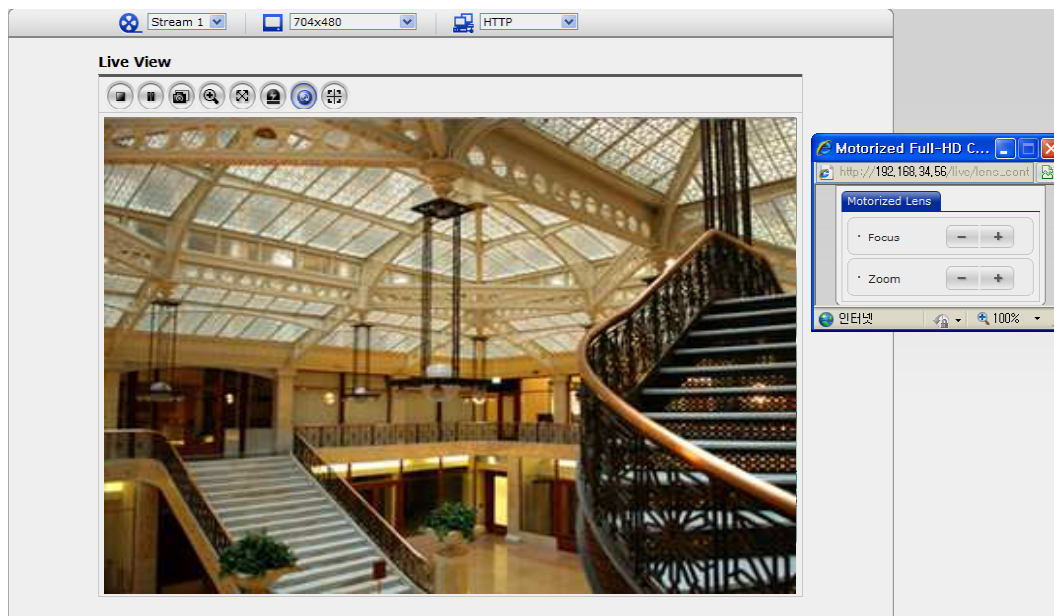
3) Video Streams

The Network Camera provides several images and video stream formats. Your requirements and the properties of your network will determine the type you use.

The Live View page in the Network Camera provides access to H.264, MPEG-4 and Motion JPEG video streams, and to the list of available video streams. Other applications and clients can also access these video streams/images directly, without going via the Live View page.

4) Focus and Zoom Control

You can control Zoom and Focus in the live screen. Press the  button on the left top in the live screen to activate the Zoom & Focus control panel.



Adjusting Zoom:

Click “-” button to zoom out and click “+” button to zoom in.

The focus is moved slightly after adjusting zoom; adjust the focus again, as necessary.

Adjusting Focus:

Click “-” button for far focus and click “+” button to near focus.

Note: Click the  button in the live screen to set the focus to the optimum position.

3.6 Network Camera Setup

This section describes how to configure the network camera, and is intended for product Administrators, who have unrestricted access to all the Setup tools; Operators, who have access to the settings for Basic, Live View, Video & Image, Event, and System Configuration.

You can configure the network camera by clicking Setup in the top right-hand corner of the Live View page. Click on this page to access the online help that explains the setup tools



When accessing the Network Camera for the first time, the “Admin Password” dialog appears. Enter your admin name and password, set by the administrator.

Note: If the password is lost, the Network Camera must be reset to the factory default settings.

There are more advanced parameters that can be managed, please refer to the NUVICO Network Video Recorder manual for complete configurations and operations instructions.