



# Rack Systems

RACK ENCLOSURES AND OPEN FRAME RACKS FOR SERVER  
AND NETWORKING APPLICATIONS IN IT ENVIRONMENTS



## TABLE OF CONTENTS

### ENCLOSURES

<b>NetShelter® SX</b>	<b>2</b>
Enclosures providing cooling, power distribution, cable management, and environmental monitoring for applications in IT environments.	
<b>NetShelter® WX</b>	<b>6</b>
Wall-mounted rack enclosures for networking applications in IT environments	

### OPEN FRAME RACKS

<b>NetShelter® 2 Post Rack</b>	<b>7</b>
2 Post racks for networking applications in IT environments	
<b>NetShelter® 4 Post Rack</b>	<b>7</b>
4 post racks with advanced power distribution and cable management features for server, networking, and telecom applications in secure IT environments	

### ACCESSORIES

<b>Enclosure and Rack Accessories</b>	<b>8</b>
Power distribution, cooling, and cable management accessories, shelving, grounding, keyboards, keyboard drawers, LCD monitors, KVM switches, security devices, stabilization accessories required for a complete rack solution	
Cooling	8
Rack Power Distribution	9
Cable Management	10
Rack Keyboard Monitor Mouse	11
Keyboards and drawers	11
KVM switches	11
Rack Mounting Hardware	11
Rack Security Devices	12
Shelving	12
Stabilization	12
Troughs and Ladders	12
Security and Environmental	14
Accessories Compatibility Chart	16

### "Fits Like a Glove" NetShelter® SX Guaranteed Compatibility



Whether you are designing a wiring closet or the largest data center, or just looking for the most flexible rack solution,

APC NetShelter® SX rack enclosures provide a secure and vendor-neutral environment for your IT equipment.

APC is committed to ensuring that your rack-mount equipment will fit into NetShelter SX enclosures. APC guarantees that all 19" EIA-310-D compliant equipment will physically fit into NetShelter SX enclosures with the mounting hardware provided by the original equipment manufacturer (OEM), APC, a third party vendor, or any combination thereof or your money back.\*

### X-Certified

NetShelter® SX rack enclosures and accessories are X-certified, meaning they are tested and certified for use with InfraStruXure™ architecture. InfraStruXure is on-demand architecture for power, cooling and environmental management. An effective solution to Network-critical Physical Infrastructure (NCPI), InfraStruXure is the industry's only integrated architecture robust enough to effectively maintain highly available and manageable networks. Look for the words (X-CERTIFIED) and the "Fits like a glove" icon throughout this brochure to determine which racks and accessories are compatible with APC InfraStruXure architecture.

\*See [www.apc.com](http://www.apc.com) for more details.

**Every product carrying this mark has been tested and certified for use with InfraStruXure™ architecture. Before you buy, check for the "X" to guarantee product compatibility.**



### InfraStruXure™ Supports Dynamic Systems Environment at Microsoft Technology Center

"We change configurations in our data center on a weekly basis. The InfraStruXure™ system with its ability to balance loads as we swap servers, battery modules and power modules, helps to make these changes worry-free."



**Chuck McCann**  
Technical Director  
Microsoft Technology Center  
– Boston



Once concerned with environmental design at the room-level, consulting engineers now direct their attention to power distribution, cooling, and cable management at the rack level. The driving force behind this shift is technology compaction, as today's IT equipment is designed with efficient rack-mounting capabilities to maximize the utilization of valuable floor space.

The ideal rack enclosure maximizes flexibility with a progressive, non-proprietary feature-set as well as an extensive line of scalable accessory products to address current needs and adapt to future technology

trends. APC NetShelter® rack systems provide the most progressive feature-set available in a vendor-neutral rack environment while allowing the user the flexibility to quickly adapt to emerging trends. Available in a variety of heights and widths, NetShelter racks and enclosures support applications ranging from branch offices and wiring closets to enterprise data centers. With an extensive line of leading-edge power distribution, cooling and cable management accessories, APC offers the most comprehensive rack solutions to protect the critical components of the IT environment.

# NetShelter® SX

Enclosures providing cooling, power distribution, cable management, and environmental monitoring for applications in IT environments.

NetShelter® SX is APC's next generation rack enclosure solution influenced by 10 years of customer feedback addressing current IT market trends for high-density server and networking applications. With a strong focus on cooling, power distribution, cable management and environmental monitoring, the NetShelter SX provides a reliable rack-mounting environment for mission-critical equipment.

## NetShelter® SX Product Design Benefits



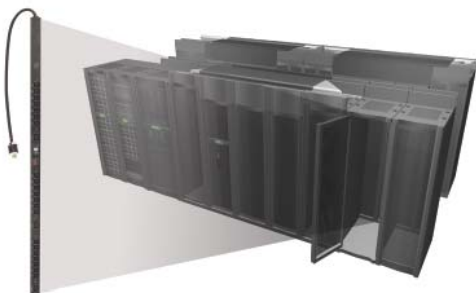
### Scalable Cooling Options

Enhanced door ventilation with scalable cooling options for high-density applications



### Environmental & Security

Integrate environmental & security solutions for protection against physical threats



### Rack Power Distribution

Toolless 0U mounting for rack PDUs



### Cable Management

Integrated features and options for horizontal and vertical routing of high-density cabling





[fig 3a]

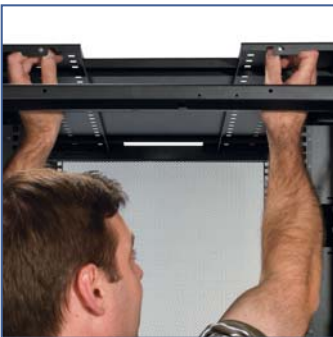
## NetShelter® SX Features and Benefits

### Compatibility

- Door ventilation exceeds 919 in<sup>2</sup> (5933 cm<sup>2</sup>)
- Captive adjustment of Vertical Mounting Rails [fig 3a]
- Fits-Like-A-Glove guaranteed compatibility

### Convenience

- Toolless installation and removal of roof (fig 3b)
- Rapid adjustment of leveling feet (fig 3c)
- Toolless PDU mounting provisions
- Numbered U positions (fig 3d)
- Light-weight, half-height side panels
- Toolless cable management options
- 42U models roll through 2 meter doorways
- Cable openings for overhead or underfloor applications



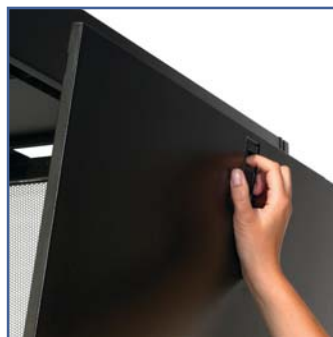
[fig 3b]



[fig 3c]



[fig 3d]



[fig 3e]

### Safety

- Integrated grounding
- UBC Zone 4 stabilization provisions

### Protection

- Lockable doors and side panels
- Door access monitoring
- Static weight load rating of 3,000 lbs

### Serviceability

- Quick release doors
- Quick release side panels (fig 3e)
- Split rear doors

### Adaptability

- Reversible doors
- Scalable cooling options
- Seamless integration of environmental monitoring devices
- External baying for easy deployment in rows (fig 3f)



Every product carrying this mark has been tested and certified for use with InfraStruXure™ architecture. Before you buy, check for the "X" to guarantee product compatibility.



[fig 3f]

## NetShelter® SX 42U×600mm (W) Enclosure

Black 42U×600 Enclosure:  
AR3100



**AR3100**

Net Weight	275.20 lbs (125.09 kg)
Net Height	78.40 inches (1991 mm)
Net Width	23.62 inches (600 mm)
Net Depth	42.13 inches (1070 mm)
Shipping Weight	318.00 lbs (144.55 kg)
Shipping Height	83.40 inches (2118 mm)
Shipping Width	35.38 inches (899 mm)
Shipping Depth	48.00 inches (1219 mm)
Weight Capacity (static load)	3000 lbs (1363.6 kg)
Weight Capacity (dynamic load)	2250 lbs (1022.7 kg)

## NetShelter® SX 48U×600mm (W) Enclosure

Black 48U×600mm Enclosure:  
AR3107



**AR3107**

Net Weight	304.10 lbs (138.23 kg)
Net Height	88.90 inches (2258 mm)
Net Width	23.62 inches (600 mm)
Net Depth	42.13 inches (1070 mm)
Shipping Weight	346.90 lbs (157.68 kg)
Shipping Height	93.90 inches (2385 mm)
Shipping Width	35.38 inches (899 mm)
Shipping Depth	48.00 inches (1219 mm)
Weight Capacity (static load)	3000 lbs (1363.6 kg)
Weight Capacity (dynamic load)	2250 lbs (1022.7 kg)

## NetShelter SX 42U×750mm (W) Enclosure

Black wide enclosure:  
AR3150



**AR3150**

Net Weight	343.10 lbs (155.95 kg)
Net Height	78.40 inches (199.1 cm)
Net Width	29.53 inches (75.0 cm)
Net Depth	42.13 inches (107.0 cm)
Shipping Weight	370.00 lbs (168.18 kg)
Shipping Height	87.25 inches (221.6 cm)
Shipping Width	35.25 inches (89.5 cm)
Shipping Depth	48.00 inches (121.9 cm)
Weight Capacity (static load)	3000 lbs (1363.6 kg)
Weight Capacity (dynamic load)	2250 lbs (1022.7 kg)

## NetShelter SX 48U×750mm (W) Enclosure

Black 48U×750mm Enclosure  
AR3157



AR3157

Net Weight	372.00 lbs (169.09 kg)
Net Height	88.90 inches (2258 mm)
Net Width	29.53 inches (750 mm)
Net Depth	42.13 inches (1070 mm)
Shipping Weight	405.00 lbs (184.09 kg)
Shipping Height	94.50 inches (2400 mm)
Shipping Width	35.25 inches (895 mm)
Shipping Depth	48.00 inches (1219 mm)
Weight Capacity (static load)	3000 lbs (1363.6 kg)
Weight Capacity(dynamic load)	2250 lbs (1022.7 kg)

## NetShelter® VX 25U×600mm (W) Enclosure

Black 25U×600mm Enclosure:  
AR2105BLK



AR2105BLK

Net Weight	255.00 lbs (115.91 kg)
Net Height	51.70 inches (1313 mm)
Net Width	23.50 inches (597 mm)
Net Depth	42.20 inches (1072 mm)
Shipping Weight	301.00 lbs (136.82 kg)
Shipping Height	57.30 inches (1455 mm)
Shipping Width	29.50 inches (749 mm)
Shipping Depth	47.50 inches (1207 mm)
Weight Capacity (static load)	2000 lbs (909.1 kg)
Weight Capacity(dynamic load)	2000 lbs (909.1 kg)

## NetShelter® VX 42U×600mm (W) Seismic Enclosure

Black 42U×600mm Enclosure:  
AR2144BLK/AR2145BLK



AR2144BLK

Net Weight	518.00 lbs (235.45 kg)
Net Height	81.50 inches (2070 mm)
Net Width	23.50 inches (597 mm)
Net Depth	42.20 inches (1072 mm)
Shipping Weight	556.00 lbs (252.73 kg)
Shipping Height	87.00 inches (2210 mm)
Shipping Width	29.50 inches (749 mm)
Shipping Depth	47.50 inches (1207 mm)
Weight Capacity (static load)	2000 lbs (909.1 kg)
Weight Capacity(dynamic load)	2000 lbs (909.1 kg)

## NetShelter® WX

### Wall-mounted rack enclosures for networking applications in IT environments

NetShelter® WX Enclosures are specifically designed for networking professionals to securely store and wire 19" EIA compatible equipment such as hubs, routers, concentrators and patch panels. Typical applications include small hub and LAN applications within wiring closets and computer rooms with floor space constraints. The NetShelter® Wall-Mount Enclosure mounts directly to building walls without occupying valuable or unavailable floor space. Rubber feet are provided with the enclosure for those applications that require floor mounting.

#### Convenience

- Wall-mountable
- Multi-purpose mounting rails
- Adjustable front rail
- Integrated cable access holes
- Labeled U positions
- Unit symmetry allows left or right hand door swing operation

#### Availability

- Ventilation front doors and side panels

#### Serviceability

- Quick release doors

#### Protection

- Lockable doors



### NetShelter® WX Wall-Mount Enclosure 13U Glass Door



Black 13U Enclosure with glass front door:  
**AR100**

#### AR100

Net Weight	94.00 lbs (42.73 kg)
Net Height	25.75 inches (65.41 cm)
Net Width	23.00 inches (58.42 cm)
Net Depth	24.50 inches (62.23 cm)
Shipping Weight	115.00 lbs (52.27 kg)
Shipping Height	33.00 inches (83.82 cm)
Shipping Width	27.00 inches (68.58 cm)
Shipping Depth	30.50 inches (77.47 cm)
Weight Capacity (static load)	100.00 lbs (45.36 kg)

### NetShelter® WX Wall-Mount Enclosure 13U Vented Door



Black 13U Enclosure with vented door:  
**AR100HD**

#### AR100HD

Net Weight	94.00 lbs (42.73 kg)
Net Height	25.75 inches (65.41 cm)
Net Width	23.00 inches (58.42 cm)
Net Depth	24.50 inches (62.23 cm)
Shipping Weight	115.00 lbs (52.27 kg)
Shipping Height	33.00 inches (83.82 cm)
Shipping Width	27.00 inches (68.58 cm)
Shipping Depth	30.50 inches (77.47 cm)
Weight Capacity (static load)	100.00 lbs (45.36 kg)



## NetShelter® 2 Post Open Frame Racks

### 2 Post racks for networking applications in IT environments

The NetShelter® 2 Post Rack offers a quality solution for the economical installation of rack-mountable networking equipment. The 2 Post Rack offers cost conscious customers a simple solution for rack mounting network equipment in a secure managed environment including data centers, wiring closets and co-location facilities. Each NetShelter® 2-Post Rack is made with high grade aluminum extrusions and offers a generous 45U (78.75" or 200cm) of equipment mounting space in a 7 foot high design. The self-squaring design makes assembly quick and easy and requires only one person to fully assemble each unit.

2-Post Rack with  
Aluminum finish:  
AR200

2-Post Rack with  
black finish:  
AR201



### 2 Post rack features

- 6061-T6 Structural grade aluminum: High quality aluminum ensures product durability
- Self squaring design: Allows for fast and easy installation

#### AR200, AR201

Net Weight	26.00 lbs (11.82 kg)
Net Height	83.50 inches (212.09 cm)
Net Width	20.20 inches (51.31 cm)
Net Depth	14.80 inches (37.59 cm)
Shipping Weight	30.00 lbs (13.64 kg)
Shipping Height	86.00 inches (218.44 cm)
Weight Capacity (static load)	750.00 lbs (340.19 kg)

## NetShelter® 4 Post Open Frame Racks

### 4 post racks with advanced power distribution and cable management features for server, networking, and telecom applications in secure IT environments.

APC 4 Post Open Frame Racks provide simple, low cost mounting means for rack-mount equipment in IT environments. Ideal for rack-mount servers, networking, and telecom equipment where security at the individual rack level is not required, open frame racks provide unobstructed airflow and fast, easy access to installed equipment. Provisions for vertically mounting APC Rack PDUs in the rear combined with options for easily routing, organizing, and storing large bundles of cables make APC 4 Post Open Frame Rack solutions the best alternative on the market.

(X-CERTIFIED)



#### AR203, AR204

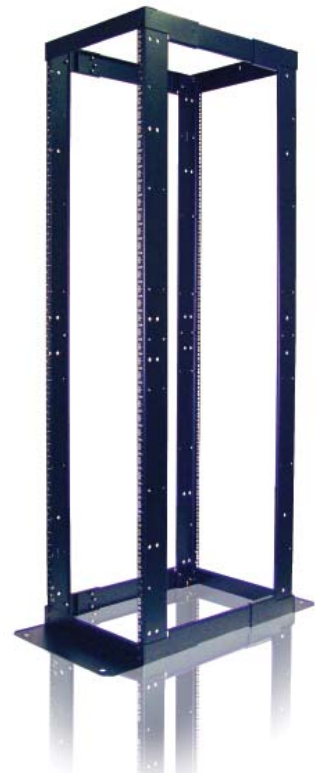
Net Weight	92.00 lbs (41.82 kg)
Net Height	80.90 inches (205.49 cm)
Net Width	20.60 inches (52.32 cm)
Net Depth	29.50 inches (74.93 cm)
Shipping Weight	102.00 lbs (46.36 kg)
Shipping Height	82.00 inches (208.28 cm)
Shipping Width	10.00 inches (25.40 cm)
Shipping Depth	7.40 inches (18.80 cm)
Weight Capacity (static load)	1000.00 lbs (453.59 kg)

### 4 post rack features

- Numbered U positions
- Optimized width
- Reversible stabilization plates

4 Post 43U Rack with  
Square Mounting Holes: AR203

4 Post 43U Rack with #12-24  
Threaded Mounting Holes: AR204



## Rack Air Distribution Unit

**Air distribution for power dense enclosures and low pressure areas**

The Rack Air Distribution Unit is a 2U fan unit that works with an existing precision air conditioning system to deliver cool air to the equipment contained in a rack enclosure. The Rack Air Distribution Unit connects into the raised floor and pulls supply air directly into the enclosure. This prevents the conditioned air from mixing with warmer room air before reaching the equipment. The Rack Air Distribution Unit minimizes temperature differences between the top and bottom of the enclosure. It also prevents hot exhaust air from recirculating to the inlet of the enclosure. The product is recommended for rack enclosures with loads greater than 1.5kW and can provide airflow for loads up to 3.0kW. It is also ideal for enclosures in raised floor environments where underfloor air distribution is inadequate.



ACF001	(115VAC, 60HZ)
ACF002	(230VAC, 50HZ)
ACF003	(100VAC, 50/60HZ)

## Rack Side Air Distribution Unit

**Air distribution for networking equipment with side to side airflow.**

Housing equipment with side to side airflow creates many challenges for IT and facility managers, particularly in regards to cooling. Because most enclosures are designed for a front to back airflow pattern, it is difficult to maintain ideal operating temperatures on side to side airflow equipment. The Rack Side Air Distribution Unit allows for greater security and organization by allowing racks to be placed adjacent to one another without impeding airflow.



The Rack Side Air Distribution Unit is a 2U rack mountable air distribution product for networking equipment or servers with side to side airflow. It pulls in conditioned air from the front of the rack and distributes it to the side air intake of the networking equipment. This extends equipment life by providing proper inlet temperatures.

This product is recommended for one or more networking products that are stacked consecutively in a rack. Rack Side Air Distribution Units may be placed above and/or below the networking equipment. Airflow pattern is user configurable via an interchangeable air turning vane.

ACF201BLK	(115VAC, 60HZ)
ACF202BLK	208/230VAC, 50/60HZ

## Rack Air Removal Unit

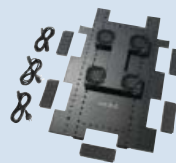
**Heat removal for high density enclosures**

Densely packed enclosures can overheat IT equipment and cause downtime. High density enclosures create an environment where traditional air distribution methods are not effective. The Air Removal Unit captures exhaust heat, ducting it to the return air plenum and eliminating hot spots. Through automatic fan speed adjustment based on temperature or power consumption, a desired temperature can be set and fans will self-adjust for optimal energy efficiency. The Rack Air Removal Unit can cool up to a 7.5 kW rack and provide fan redundancy up to 5.0 kW, as well as provide power redundancy through dual corded input. This space saving product mounts to the back of the enclosure – requiring zero U space.



ACF400	(100–240V 50/60HZ for NetShelter SX 600mm Wide Rack)
ACF402	(100–240V 50/60HZ for NetShelter SX 750mm Wide Rack)
ACF126	(ARU Ducting Kit for 24" Ceiling Tiles)
ACF127	(ARU Ducting Kit for 600mm Ceiling Tiles)
ACF122	ARU DOOR GRILLE KIT

## FAN TRAYS



### Roof Fan Tray (120, 208, 230 VAC) Black

ACF501(115 VAC, 600mm), ACF502 (208–230 VAC, 600mm), ACF503 (115 VAC, 750mm), and ACF504 (208–230 VAC, 750mm). (X-CERTIFIED)

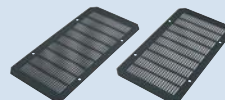
Occupies 0U of rack space, Integrated cable access holes, promotes bottom to top airflow. Includes Installation Guide, mounting hardware.



### Wall-Mount Fan Tray 120, 230 VAC Black

AR8206BLK (120 VAC), AR8207BLK (230 VAC)

Occupies 1U of rack space, promotes bottom to top airflow. Includes Installation Guide, Qty 1 - IEC to NEMA 5-15P Power Cord (120V), IEC to IEC 320 Power (230V) Cord; Qty 2 - Fans.



### Wall-Mount Ventilation Plate

AR8355

Ventilated. Includes Installation Guide.

**To determine which cooling accessories are compatible with specific models of NetShelter enclosures and racks, check the Accessory Compatibility Chart on page 10-17.**

## Basic Rack PDUs

### Power distribution for rack-mount equipment

APC offers a wide variety of Basic Rack Power Distribution Units (PDUs), which allow users to distribute power outlets to rack-mount equipment. Horizontal and vertical units are available as well as a variety of power inputs and outputs to fit most power environments. APC now offers Basic Rack PDUs that mount vertically, without tools in the rear channel of a NetShelter® SX. The Basic Rack PDU family contains solutions that support up to 14.4kW of load.



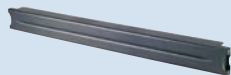
## Metered Rack PDUs

### Power distribution units that monitor the aggregate power consumption of connected equipment

APC's Metered Rack Power Distribution Units (PDUs) provide power distribution as well as equip on-site installers with the ability to monitor the aggregate current draw as equipment is connected to the unit. These Metered Rack PDUs also have alarm thresholds that when exceeded provide alarms to alert users of potential problems. These features help eliminate the possibility of an overloaded circuit. Units listed below include installation guide, rack mounting brackets, toolless mounting kit, and user manual. The Metered Rack PDU family contains solutions that support up to 22kW of load.



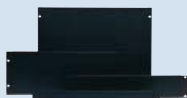
## BLANKING PANELS



### 1U Modular Toolless Blanking Panels

AR8136BLK (Qty 10)/AR8136BLK200 (Qty 200)  
(X-CERTIFIED)

Modular 1U plastic blanking panels allow quick and easy installation in any EIA-310-D compliant square hole mounting rail rack or enclosure, toolless mounting.



### Blanking Panel Kit (1U, 2U, 4U, 8U)

AR8101BLK (Black) (X-CERTIFIED)

Metal blanking panels are designed for use in vertical rails with threaded holes. They promote proper airflow, preventing air recirculation by occupying unused rack space. Their use will improve the efficiency of cooling within the enclosure. Includes mounting hardware. Qty 1 each: 1U, 2U, 4U and 8U Panel.



### 1U Blanking Panel Kit (Qty 2)

AR8108BLK (X-CERTIFIED)

Metal blanking panels are designed for use in vertical rails with threaded holes. They promote proper airflow, preventing air recirculation by occupying unused rack space. Their use will improve the efficiency of cooling within the enclosure. Includes mounting hardware Qty 2-1U Panels.

## Switched Rack PDUs

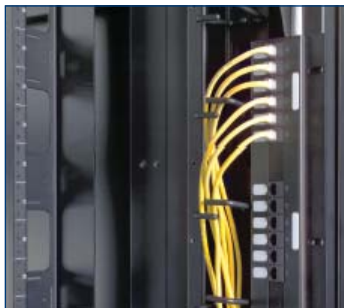
### Power distribution that remotely controls power to individual outlets and monitors the aggregate power consumption

APC's Switched Rack Power Distribution Units (PDUs) are premium solutions to many of the power management problems seen in today's IT environments. Some of the problems are unauthorized use of power outlets, locked-up equipment, in-rush current, overloaded circuits, and the need of remote access to power outlets in the rack. Users can access, configure, and control the Switched Rack PDUs through Web, SNMP, or Telnet Interfaces. The Switched Rack PDU family contains solutions that support up to 12.5kW of load.



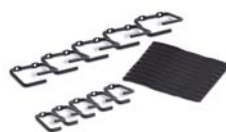
## Cable Management

As the number of IT components within each rack enclosure continues to increase, so do the number of power and data cables. Traditionally, overhead cable trays and under-floor cabling systems limit flexibility and adaptability. Under-floor plenum material is costly and resource-intensive to install, and under-floor branch circuits can negatively effect air distribution.



Recognizing these challenges, APC responded with a comprehensive selection of optional components that allows users to pick the ideal cable management solution for their particular IT environment. Accessories such as shielded power cable troughs and data partitions create self-contained cabling, eliminating the need to use space under a raised floor and permitting better organization in non-raised floor environments.

## VERTICAL CABLE MANAGEMENT



### Cable Management Rings

AR8113A (X-CERTIFIED)

Facilitates side/vertical cable management. Organizes data and power cables. Includes Mounting hardware, Velcro Mounting Straps.



### NetShelter® SX Wide Cable Ring Set

AR7707 (X-CERTIFIED)

Deep cable management rings to facilitate vertical cable management in typically networking environments.



### NetShelter SX 42U/48U Vertical PDU Mount and Cable Organizer

AR7502/AR7572 (X-CERTIFIED)

Cable management accessory to help eliminate cable stress and maintain a neat, organized cable layout within an enclosure or a rack.



### Cable Containment Brackets for NetShelter SX

AR7702 (X-CERTIFIED)

Cable management accessory to help eliminate cable stress and maintain a neat, organized cable layout within an enclosure or a rack.



### Cable Tree for NetShelter SX

AR7505 (X-CERTIFIED)

Cable management accessory to facilitate rear cable management within an enclosure or a rack. Helps to eliminate cable stress and maintain a neat, organized cable layout. Works in both 42U and 48U racks.

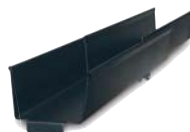


### Vertical Cable Organizer for NetShelter 0U Channel

AR8442 (X-CERTIFIED)

Toolless, vertical cable management accessory that allows for quick installation and takes up zero U of space within the rack. It helps to eliminate cable stress and organize the cable layout within the rear channels of the NetShelter® enclosure.

## HORIZONTAL CABLE MANAGEMENT



### Side Channel Cable Trough

AR8008BLK/AR8016ABLK (X-CERTIFIED)

Adjustable mounting depth, facilitates side cable management, tool-less mounting. Includes Installation Guide, Velcro Mounting Straps.



### Cable Management Arm

AR8129 (X-CERTIFIED)

Organizes data and power cables. Includes Installation Guide, Mounting hardware, Velcro Mounting Straps.



### NetShelter SX Wide Mounting Rail Brush Strips

AR7706 (X-CERTIFIED)

Promotes proper airflow through the rack while allowing cables to be passed from the front to the rear of the rack.



### 1U and 2U Horizontal Cable Organizer

AR8425A, AR8426A (X-CERTIFIED)

Facilitates front cable management. Integrated front cable hoops. Occupies 1U of rack space. Includes Installation Guide, Mounting hardware.



### 2U Patch Cord Organizer Black

AR8427A (X-CERTIFIED)

Facilitates front cable management. Integrated front cable hoops. Occupies 2U of rack space. Includes Installation Guide, Mounting hardware.



### 1U Cable Pass-Thru w/Brush Strip Black

AR8429 (X-CERTIFIED)

Includes Mounting hardware.



### 2U Horizontal Cable Organizer w/ Pass-Thru

AR8428 (X-CERTIFIED)

Facilitates front cable management while allowing cables to pass through to rear appliances. Occupies 2U of rack space.

**To determine which accessories are compatible with specific models of NetShelter enclosures and racks, check the Accessory Compatibility Chart on page 16-17.**



## RACK LCD MONITOR KEYBOARD MOUSE

### Rack LCD

AP5015 (15-inch LCD Monitor) (X-CERTIFIED)

AP5017 (17-inch LCD Monitor) (X-CERTIFIED)

Integrated keyboard, 15" or 17" monitor, and mouse; occupies 1U of rack space; allows for rear mounting of 1U device; integrated touchpad pointing device; power tilt sensor; PS/2 terminations; standard VGA connector; low cooling requirements; slide rails; quick release tabs; On-Screen Display (OSD) adjustments; includes cable management arm and rack-mount brackets.



## KEYBOARDS AND DRAWERS

### 17" Keyboard Drawer

AR8126ABLK (X-CERTIFIED)

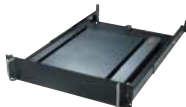
4 Post Mounting. Accommodates 17 inch keyboards. Adjustable mounting depth. Allows for rear mounting of 1U device. Integrated wrist rest. Includes Installation Guide, mounting hardware.



### 19" Rotating Keyboard Drawer

AR8127BLK (X-CERTIFIED)

4 Post Mounting. Adjustable mounting depth. Designed for standard desktop keyboards. Occupies 2U of rack space. Includes Cable Management Clips, Installation Guide, mounting hardware, mouse pad, wrist rest.



### 17" Keyboard

AR8250BLK (Black) (X-CERTIFIED)

104 key keyboard, 2 mouse buttons, integrated number pad, integrated touchpad pointing device, mechanical keyswitches, PS/2 terminations. Includes User Manual.



## RACK KVM

### 16-Port IP KVM Switch

AP5405

Enterprise-class KVM solution for managing Windows, Sun and Linux/UNIX servers; supports connections to PS/2, Sun and USB; integrated Microsoft Remote Desktop Protocol (RDP) functionality; CAT5- or 6-based cabling, supporting distances of up to 500 ft (153 meters); occupies only 1U of rack space; server-based authentication support for RADIUS, TACACS+, LDAP, NTLM, Kerberos, and Active Directory, user access lists per port and user access logging; centralized management through cascading with support for up to 1024 servers.



### 16-Port CAT5 KVM Switch

AP5401

Enterprise-class KVM solution for managing Windows, Sun and Linux/UNIX servers; supports connections to PS/2, Sun and USB; CAT5- or 6-based cabling, supporting distances of up to 500 ft (153 meters); occupies only 1U of rack space; server-based authentication support for RADIUS, TACACS+, LDAP, NTLM, Kerberos, and Active Directory, user access lists per port and user access logging; centralized management through cascading with support for up to 1024 servers.



### 8- and 16-Port Analog KVM Switches

AP5201 and AP5202

Multi-platform support (PS/2, USB, or SUN); firmware upgradeable; hot pluggable; read-only user option; desktop placement or 1U rack-mount; on-screen display (OSD) capability; scanning capabilities; daisy-chain compatible units and manage up to 512 servers



## RACK MOUNTING HARDWARE

### # 10-32 Hardware Kit

AR8005 (X-CERTIFIED)

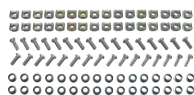
Additional hardware for mount  
Qty 36 #10-32 caged nuts.



### M6 Hardware Kit

AR8100 (X-CERTIFIED)

M6 hardware for mounting equipment in 600mm wide enclosures. Qty 32 sets of M6 caged nuts and nylon washers and slot/Philips screws



### Recessed Rail Kits for NetShelter® SX

AR7503, AR7504, AR7508, and AR7578

Enables users to mount networking and server equipment in the same rack or enclosure. Includes: Installation Guide, Mounting Hardware, Rack mounting hardware



### Equipment Support Rails for 600mm Wide Enclosure.

AR8006A

The Equipment Support Rails will support any non-Rack Mount piece of equipment that measures 16.75" (43cm) to 17.7" (45cm) wide and has a maximum weight of 200 lbs/ 91kg. The Support Rails attach to the side mounting holes of the vertical mounting rails.



### NetShelter SX HP Adapter Kit – L Class/RP54XX Series

AR8013A

This adapter kit allow HP's L Class/RP54xx Series servers to be installed in the NetShelter® SX Enclosure. This kit is configured for the installation of one server  
Includes: Installation Guide, Mounting Hardware





## ACCESSORIES

### RACK MOUNTING HARDWARE

#### NetShelter® SX HP Adapter Kit – N Class/RP7400

AR8014A

This adapter kit allow HP's N Class/RP7400 server to be installed in the NetShelter® SX Enclosure. This kit is configured for the installation of one server. Includes: Installation Guide, Mounting Hardware



### RACK SECURITY DEVICES

#### Door Switch Kit

AP9513 (X-CERTIFIED)

Advanced security, interior and exterior mounting capabilities. Includes User Manual.



#### Combination Lock Handle

AR8132A (X-CERTIFIED)

Master key override, Three digit thumbwheel combination, User configurable combination



### STABILIZATION

#### NetShelter SX Bolt-Down Kit

AR7701

Bolt-down brackets for UBC Zone-4 Seismic anchoring options in row applications. Includes: Installation Guide, Mounting Hardware



#### NetShelter SX 600mm/750mm Stabilizer Plate

AR7700

Stabilization plates to prevent tip-over in stand-alone rack applications. Includes: Front stabilizing plate, Installation Guide, Mounting Hardware



To determine which accessories are compatible with specific models of NetShelter enclosures and racks, check the Accessory Compatibility Chart on page 18–19.

### SHELVING

#### Fixed Shelf 50lbs/22.7kg

AR8105BLK (Black) (X-CERTIFIED)

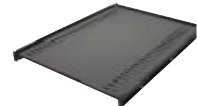
Occupies 2U of rack space, ventilated, cantilever (2 post) mount. Includes Installation Guide, mounting hardware.



#### Fixed Shelf 250lbs/114kg

AR8122BLK (Black) (X-CERTIFIED)

Occupies 1U of rack space, 4 post mounting, adjustable mounting depth, ventilated. Includes Installation Guide, Mounting hardware.



#### Sliding Shelf 100lbs/45.5kg

AR8123BLK (Black) (X-CERTIFIED)

Occupies 1U of rack space, 4 post mounting, adjustable mounting depth, ventilated. Includes friction pads, Installation Guide, Mounting hardware, User Manual.



#### Sliding Shelf 200lbs/91kg

AR8128BLK (Black) (X-CERTIFIED)

4 post mounting, adjustable mounting depth, full extension. Occupies 1U of rack space. Includes Installation Guide, Mounting hardware, Qty 4 - Retaining clips.



### TROUGHS AND LADDERS

#### PDU Shielding Trough 600mm wide Black

AR8160ABLK, AR8160ABLKSEISMIC (X-CERTIFIED)

Facilitates overhead power distribution. Protective grounding provisions. Toolless mounting. Includes Installation Guide, Qty 1 - 8 inch/20cm grounding strap.



#### NetShelter Shielding Trough 600mm wide

AR8161ABLK, AR8161ABLKSEISMIC (X-CERTIFIED)

Facilitates overhead power distribution. Protective grounding provisions. Toolless mounting. Includes Installation Guide, Qty 1 - 8 inch/20cm grounding strap.



#### Shielding Partition Solid 600mm wide Black

AR8162ABLK, AR8162ABLKSEISMIC (X-CERTIFIED)

Facilitates overhead cable management. Protective grounding provisions, toolless mounting. Includes Installation Guide, Qty 1 - 8 inch/20cm grounding strap.



## TROUGHS AND LADDERS

### Shielding Partition Pass-through 600mm wide Black

AR8163ABLK, AR8163ABLKSEISMIC (X-CERTIFIED)

Cable pass-through. Facilitates overhead cable management. Protective grounding provisions. Toolless mounting. Includes Installation Guide, Qty 1 - 8 inch/20cm grounding strap.



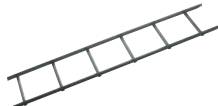
### Data Cable Ladder 6" (15cm) with Bracket Kit

AR8164ABLK (X-CERTIFIED) , AR8164AKIT (ladder alone)



### Power Cable Ladder 12" (30cm) with Bracket Kit

AR8165ABLK (X-CERTIFIED), AR8165AKIT (ladder alone)



### APC Ladder Bracket Kit

AR8166ABLK (X-CERTIFIED)



### Shielding Trough End Cap Black

AR8167BLK (X-CERTIFIED)



### ISX Type A Ladder Brackets

AR8168BLK (X-CERTIFIED)

Installation Guide, Qty 1 - 8 inch/20cm grounding strap.



### APC Ladder Clamp Kit

AR8169 (X-CERTIFIED)



### NetShelter® Shielding Trough 750mm wide Black

AR8171BLK (X-CERTIFIED)

Facilitates overhead power distribution. Protective grounding provisions. Toolless mounting. Includes Installation Guide, Qty 1-8 inch/20cm grounding strap.



### Shielding Partition Solid 750mm wide Black

AR8172BLK (X-CERTIFIED)

Facilitates overhead cable management. Protective grounding provisions. Tool-less mounting. Includes Installation Guide, Qty 1 - 8 inch/20cm grounding strap.



### Shielding Partition Pass-through 750mm wide Black

AR8173BLK (X-CERTIFIED)

Cable pass-through. Facilitates overhead cable management. Protective grounding provisions. Toolless mounting. Includes Installation Guide, Qty 1-8 inch/20cm grounding strap.



## TROUGHS AND LADDERS

### Shielding Trough Cover 600mm wide

AR8174BLK (X-CERTIFIED)



### Shielding Trough Cover 750mm wide

AR8175BLK (X-CERTIFIED)



### 750mm Wide Trough Brackets

AR8176BLK (X-CERTIFIED)



### 750mm Wide Partition Brackets

AR8177BLK (X-CERTIFIED)



### PDU Shielding Trough 750mm Wide Black

AR8178BLK (X-CERTIFIED)

Facilitates overhead power distribution. Protective grounding provisions. Tool-less mounting. Includes Installation Guide, Qty 1- 8 inch/20cm grounding strap.



### Ladder Attach Bracket 2 Post Rack

AR8460

Allows cable ladders to attach to 2-post racks, running parallel and perpendicular to a row of racks. This increases agility by providing solutions for environments with layout challenges



### Ladder Corner Clamp Kit

AR8461

These brackets allow ladders to be connected at 90-degree angles to address unique layouts or cable management needs.



### Ladder Angle Clamp Kit

AR8462

These brackets are adjustable to allow the connection of ladders that are going up a rise between racks and/or enclosures of different heights.



### Ladder Stacking Kit

AR8463

This allows for the vertical stacking of one row of ladders to separate data and power lines running to and from racks. APC recommends that the ladders only be stacked two high.



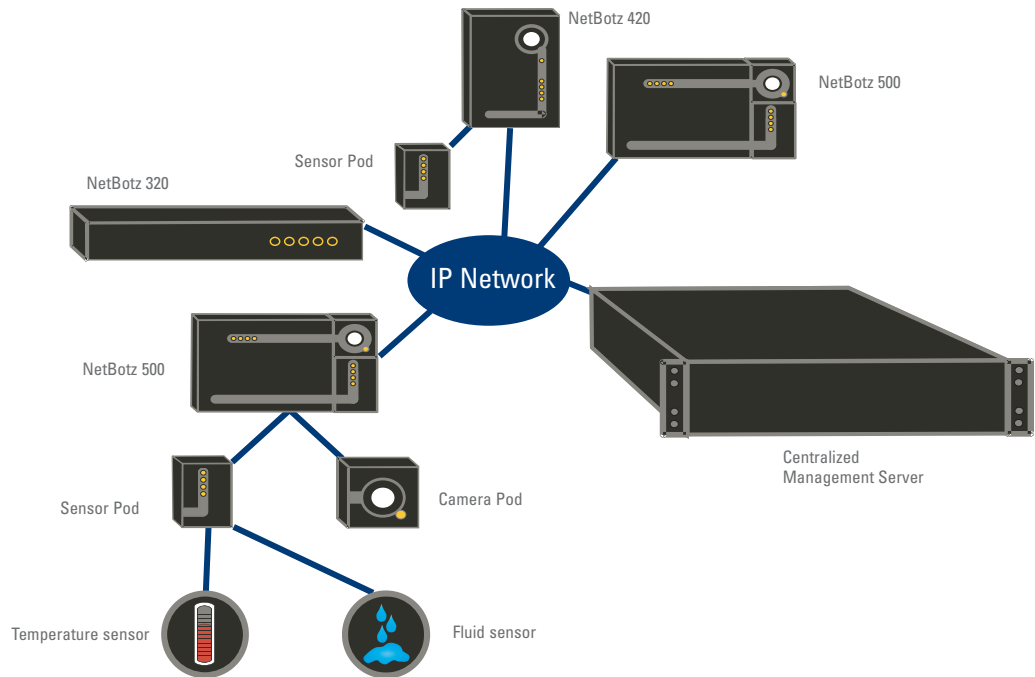
### Ladder Wall Termination Kit 6" & 12" Wide

AR8465

A solution for those applications in which a ladder must terminate at a wall rather than at another rack or enclosure.



NetBotz® monitoring appliances connect to existing IP networks allowing for easy deployment. Sensors and cameras may be attached to provide additional monitoring capabilities. Centralized management allows all aspects of the NetBotz appliances to be monitored and managed.



## Security & Environmental Solutions for RACKS

Keeping the racks and enclosures in your data center safe and secure should incorporate more than the latest digital security solutions. Physical security and environmental monitoring are key to protecting the resources in your racks and enclosures.

APC environmental solutions monitor conditions in each rack such as temperature, humidity, and airflow. The scalable solutions easily expand to monitor large numbers of racks, and can be customized with the appropriate sensors deployed in strategic locations for optimal monitoring. The advanced policy engine which resides on each monitoring appliance accommodates multiple thresholds per sensor, sophisticated alert mechanisms, and built-in alert escalation, enabling you to receive immediate notification when issues occur.

APC physical security solutions for racks include access control and IP-based video surveillance appliances. Access control



solutions manage entry to individual racks, ensuring that only authorized personnel reach important equipment and resources. Apply a strict access schedule to specific doors on individual enclosures, providing even greater security. IP-based video surveillance appliances allow you to know who-did-what-when on a rack-by-rack basis. Couple NetBotz camera pods or third-party closed-circuit TV cameras with advanced motion detection capabilities to create a comprehensive video monitoring solution. Recorded video can be centrally accessed, searched, and tagged for quick retrieval with the NetBotz centralized management platform, allowing for a scalable solution and easy administration for your enterprise deployments.

## Security & Environmental Solutions for ROOMS

As the IP environment expands to touch all aspects of your business, important systems and resources are often kept in sub-optimal rooms and closets that are usually unmanned. This combination of distributed resources and unoccupied spaces is an ideal situation for the introduction of physical threats.

APC environmental solutions monitor conditions such as temperature, humidity, and water leaks in closets and rooms. Rack- and wall-mount environmental monitoring appliances and low-profile sensors are easily installed for seamless incorporation into your rooms. Deploying door sensors allows for notification when doors to remote and unmanned locales are opened.

In addition to monitoring the environmental conditions of rooms, physical security solutions for rooms includes video monitoring, which captures a visual record each time a



person accesses a remote room. The video monitoring solution is fully customizable, allowing for configuration of specific days and times when motion detection and alarming is enabled or disabled. Monitoring appliances include an advanced policy engine that can be configured to provide multiple types of notifications when thresholds are reached. The APC physical security solution can easily scale from a small number of rooms to a large number of rooms via an intelligent centralized management platform.



## SURVEILLANCE

**Create a visual record** of who enters secure areas and what they do while there

**Wall- and rack-mount** appliances with cameras

**Capture video** in response to motion, door opening, and more

**Sort and search recorded clips** by many criteria

**Control frame rate and resolution** to match network and storage capabilities



## ENVIRONMENTAL

**Protect your Network-critical Physical Infrastructure** from environmental threats

**Wall- and rack-mount** appliances

**Protect against damage** due to heat, humidity, water, smoke, dust, and much more

**Multiple thresholds** for each sensor allowing for notifications at the informational, warning and critical levels

**Various types of alert actions** allow notifications to be sent to SNMP managers, email systems, and web servers phones, pagers, etc.



## ACCESS CONTROL

**Network appliances** enabling remote and local authentication for your APC rack enclosure

**Proximity-enabled** rack access system

**Audit trail** allows for troubleshooting and record-keeping

**Local authentication** for front and rear door of rack

**Access alarms** based on remotely configurable settings



## ACCESSORIES AND SENSORS

**Extend the capabilities** of your monitoring appliances

**Pods, external sensors**, cables, and mounting brackets

**Position sensors** at desired monitoring points

**Support wide variety** of analog and digital sensors via dry contact, 4-20mA, 0-5V

**Mounting and deployment hardware** supports flexible placement of appliances and pods



## CENTRALIZED MANAGEMENT

**Central server** that enables management and monitoring all of your NetBotz® appliances

**Standard and enterprise** servers available

**Centralized management**, configuration and administration gives you a 24x7 real-time view into the status of your environment

**For use in a single data center**, multiple data centers, or IDF/MDF closets

## PHYSICAL THREAT

### Security & Environmental Monitoring Solutions Address Multiple Risk Areas

### Environmental Disruption

The #1 physical cause of downtime at remote locations, environmental problems go beyond worries of fires and floods. Ventilation and power are key points of exposure and become more so as equipment density increases.

### Human Error

We call this the "unspoken epidemic" because no one likes to discuss human error and the tremendous impact it can have on availability. However, it's the second greatest physical cause of downtime in remote or unsupervised locations because systems are often housed in janitor closets, wiring closets, and other less-than-optimal settings.

### Physical Theft

As assets become smaller and more efficient, they become more attractive targets to steal. Physical attacks against digital assets are often overlooked and are a source of real concern.

### Sabotage

On everyone's minds as a result of current events, terrorism must be given due consideration, regardless of cost.

There may be threats within your own building from disgruntled employees who may strike and, without any prevention, succeed.



# ACCESSORIES COMPATIBILITY CHART

NetShelter Enclosure & Rack Accessory SKUs	Description	Color	Rack Enclosures						Open Frame Racks	
			AR3100	AR3150	AR3107	AR3157	AR2105BLK	AR100 & AR100HD	AR200 & AR201	AR203 & AR204
AR7000	NetShelter SX 42U 600mm Wide Perforated Curved Door Black	Black	•							
AR7007	NetShelter SX 48U 600mm Wide Perforated Curved Door Black	Black			•					
AR7050	NetShelter SX 42U 750mm Wide Perforated Curved Door Black	Black		•						
AR7057	NetShelter SX 48U 750mm Wide Perforated Curved Door Black	Black				•				
AR7100	NetShelter SX 42U 600mm Wide Perforated Split Doors Black	Black	•							
AR7107	NetShelter SX 48U 600mm Wide Perforated Split Doors Black	Black			•					
AR7150	NetShelter SX 42U 750mm Wide Perforated Split	Black		•						
AR7157	NetShelter SX 48U 750mm Wide Perforated Split Doors Black	Black				•				
AR7201	NetShelter SX 600mm Wide x 1070mm Deep Standard Roof Black	Black	•		•					
AR7202	Roof Match Kit for SX to VX, 750mm	Black		•		•				
AR7203	Roof Match Kit for SX to VX, 600mm	Black	•		•					
AR7204	Grommet/Cover for Roof Openings on NetShelter SX	Black	•	•	•	•				
AR7209	NetShelter SX Roof Bridge to Facilitate Overhead Cabling	Black	•	•	•	•				
AR7251	NetShelter SX 750mm Wide x 1070mm Deep Standard Roof Black	Black		•		•				
AR7301	NetShelter SX 42U 1070mm Deep Split Side Panels Black Qty 2	Black	•	•						
AR7371	NetShelter SX 48U 1070mm Deep Split Side Panels Black Qty 2	Black			•	•				
AR7502	NetShelter SX 42U Vertical PDU Mount and Cable Organizer	Black	•	•						
AR7503	NetShelter SX 42U 600mm Wide Recessed Rail Kit	Black	•							
AR7504	NetShelter SX 48U 600mm Wide Recessed Rail Kit	Black			•					
AR7505	Cable Tree for NetShelter SX	Black	•	•	•	•				
AR7508	NetShelter SX 42U 750mm Wide Recessed Rail Kit	Black		•						
AR7572	NetShelter SX 48U Vertical PDU Mount and Cable Organizer	Black			•	•				
AR7578	NetShelter SX 48U 750mm Wide Recessed Rail Kit	Black				•				
AR7600	NetShelter SX 42U/48U Baying Trim Kit Black	Black	•	•	•	•				
AR7601	Baying Kit for 42U SX to VX or VS – 600mm centers	Black	•	•						
AR7602	Baying Kit for 42U SX to VX or VS – 24 inch centers	Black	•							
AR7700	NetShelter SX 600mm/750mm Stabilizer Plate Black	Black	•	•	•	•				
AR7701	NetShelter SX Bolt-Down Kit	Black	•	•	•	•				
AR7702	Cable Containment Brackets for NetShelter SX	Black	•	•	•	•				
AR7706	NetShelter SX 750mm Mounting Rail Brush Strips	Black		•		•				
AR7707	NetShelter SX Wide Cable Ring Set	Black		•		•				
AR7708	NetShelter SX Air Recirculation Prevention Kit	Black	•	•	•	•				
AR8005	#10-32 Hardware Kit (Qty-36)	N/A	•	•	•	•	•	•		AR203 only
AR8006	Equipment Support Rails 600mm wide	White-Zinc					•			
AR8008BLK	Side Channel Cable Trough	Black								•
AR8010BLK	Recessed Rail Kit for 600mm wide	Black					•			•
AR8011BLK	Dual PDU Mounting Brackets 600mm wide	Black					•			
AR8013	HP Adapter Kit - L Class/RP54XX Series	Black					•			
AR8013A	NetShelter SX HP Adapter Kit - L Class/RP54xx Series	Black	•		•					
AR8014	HP Adapter Kit - N Class/RP7400 Series	Black					•			
AR8014A	NetShelter SX HP Adapter Kit - N Class/RP7400 Series	Black	•		•					
AR8015	M6 Hardware Kit (Qty-32) for AR203	Black								AR203 only
AR8016BLK	NetShelter SX Side Channel Cable Trough	Black								
AR8100	M6 Hardware Kit (Qty-32)	N/A	•	•	•	•	•	•		AR203 only
AR8101BLK	Blanking Panel Kit 19" Black (1U, 2U, 4U, 8U)	Black	•	•	•	•	•	•	•	•
AR8105BLK	Fixed Shelf 50lb/23kg Black	Black	•	•	•	•	•	•	•	•
AR8108BLK	1U Blanking Panel Kit 19" Black	Black	•	•	•	•	•	•	•	•
AR8112BLK	Bolt-Down Bracket Kit Black	Black					•			
AR8113A	Cable Management Rings	Black	•	•	•	•	•	•	•	•
AR8115ABLK	Stabilizer Plate 600mm Wide Black	Black					•			
AR8116BLK	Cable Containment Brackets Black	Black					•			
AR8122BLK	Fixed Shelf 250lbs/114kg Black	Black	•	•	•	•	•			AR203 only
AR8123BLK	Sliding Shelf 100lbs/45kg Black	Black	•	•	•	•	•			•
AR8126ABLK	17" Keyboard Drawer Black	Black	•	•	•	•	•			•
AR8127BLK	19" Rotating Keyboard Drawer Black	Black	•	•	•	•	•			•
AR8128BLK	Sliding Shelf 200lbs/91kg Black	Black	•	•	•	•	•			•
AR8129	1U Cable Management Arm	White-Zinc	•	•	•	•	•			•
AR8132A	NetShelter SX-VX-VS Combination Door Lock Handle	Black	•	•	•	•	•			
AR8136BLK	1U Plastic Blanking Panel Kit 19" Black (Qty - 10)	Black	•	•	•	•	•			AR203 only
AR8136BLK200	1U Plastic Blanking Panel Kit 19" Black (Qty - 200)	Black	•	•	•	•	•			AR203 only
AR8161ABLK	NetShelter Shielding Trough 600mm Wide Black	Black	•	•	•	•				•
AR8162ABLK	Shielding Partition Solid 600mm Wide Black	Black	•	•	•	•				•
AR8163ABLK	Shielding Partition Pass-Through 600mm Wide Black	Black	•	•	•	•				•



NetShelter Enclosure & Rack Accessory SKUs	Description	Color	Rack Enclosures						Open Frame Racks	
			AR3100	AR3150	AR3107	AR3157	AR2105BLK	AR100 & AR100HD	AR200 & AR201	AR203 & AR204
AR8164AKIT	Data Cable Ladder 6" (15cm) wide (Qty 1)	Black	•	•	•	•	•			•
AR8164ABLK	Data Cable Ladder 6" (15cm) wide w/ Bracket Kit	Black	•	•	•	•	•			•
AR8165AKIT	Power Cable Ladder 12" (30cm) wide (Qty 1)	Black	•	•	•	•	•			•
AR8165ABLK	Power Cable Ladder 12" (30cm) wide w/ Bracket Kit	Black	•	•	•	•	•			•
AR8166ABLK	Ladder Bracket Kit	Black	•	•	•	•	•			•
AR8167BLK	Trough End Cap Black (Qty-2)	Black	•	•	•	•	•			•
AR8168BLK	Ladder to Enclosure Connection Brackets	Black	•	•	•	•	•			•
AR8169	Ladder Clamp Kit	Black	•	•	•	•	•			•
AR8171BLK	NetShelter Shielding Trough 750mm Wide Black	Black		•		•				
AR8172BLK	Shielding Partition Solid 750mm Wide Black	Black		•		•				
AR8173BLK	Shielding Partition Pass-Through 750mm Wide Black	Black		•		•				
AR8174BLK	Shielding Trough Cover 600mm Wide Black (Qty-2)	Black	•		•					•
AR8175BLK	Shielding Trough Cover 750mm Wide Black (Qty-2)	Black		•		•				
AR8176BLK	750mm Wide Trough Brackets	Black		•		•				
AR8177BLK	750mm Wide Partition Brackets	Black		•		•				
AR8355	NetShelter WX Vented Gland Plate	Black						•		
AR8359	NetShelter WX Caster Kit	Black						•		
AR8390	Grounding Kit	N/A					•			
AR8400	#12-24 Hardware Kit (Qty-24)	Black	•	•	•	•		•	•	AR204 only
AR8410	NetShelter 4-Post Rack Baying Brackets 24" Centers	Black								•
AR8411	NetShelter 4-Post Rack Baying Brackets 600mm Centers	Black								•
AR8415	NetShelter 4-Post Rack PDU Mounting Brackets	Black								•
AR8416	NetShelter 4-Post Rack PDU Adapter Plates	Black								•
AR8417	NetShelter 4-Post Rack PDU Adapter Brackets	Black								•
AR8422	Double-Sided Fixed Shelf for 2-Post Rack 250lbs/114kg	Black							•	
AR8425A	1U Horizontal Cable Organizer	Black	•	•	•	•	•	•	•	•
AR8426A	2U Horizontal Cable Organizer	Black	•	•	•	•	•	•	•	•
AR8427A	2U Patch Cord Organizer	Black	•	•	•	•	•	•	•	•
AR8428	2U Patch Cord Organizer with Pass-Thru	Black	•	•	•	•	•	•	•	•
AR8429	1U Cable Pass-Thru with Brush Strip	Black	•	•	•	•	•	•	•	•
AR8440A	3" Vertical Cable Organizer	Black							•	•
AR8441A	6" Vertical Cable Organizer	Black							•	•
AR8442	Vertical Cable Organizer for NetShelter 0U Channel	Black	•	•	•	•	•			
AR8445	3" Control Bracket Kit	Black							•	
AR8446	6" Control Bracket Kit	Black							•	
AR8450	NetShelter 4-Post Rack Roof	Black								•
AR8460	Ladder Attach Bracket 2 Post Rack	Black							•	
AR8461	Ladder Corner Clamp Kit	Black							•	
AR8462	Ladder Angle Clamp Kit	Black							•	
AR8463	Ladder Stacking Kit	Black							•	
AR8465	Ladder Wall Termination Kit 6" & 12" Wide	Black							•	
AP9513	Door Switch Kit	Grey	•	•	•	•	•			

Rack Cooling SKUs	Description	Color	Rack Enclosures						Open Frame Racks	
			AR2105BLK	AR3100	AR3150	AR3107	AR3157	AR100 & AR100HD	AR200 & AR201	AR203 & AR204
ACF001	RM Air Distribution Unit 120V	Black	•	•	•	•	•			
ACF002	RM Air Distribution Unit 208/230V	Black	•	•	•	•	•			
ACF003	RM Air Distribution Unit 100V	Black	•	•	•	•	•			
ACF400	Rack Air Removal Unit 100-240V 50/60HZ for NetShelter SX 600 mm Wide Rack	Black		•		•				
ACF402	Rack Air Removal Unit 100-240V 50/60HZ for NetShelter SX 750 mm Wide Rack	Black			•		•			
ACF126	Rack Air Removal Unit SX Ducting Kit for 24"	Black		•	•	•	•			
ACF127	Rack Air Removal Unit SX Ducting Kit for 600mm Ceiling Tiles	Black		•	•	•	•			
ACF122	ARU Door Grille Kit	Black		•	•	•	•			
AR8206BLK	NetShelter WX Fan Tray 120VAC Black	Black						•		
AR8207BLK	NetShelter WX Fan Tray 230VAC Black	Black						•		
ACF501	Netshelter SX Roof Fan Tray 115 VAC	Black		•		•				
ACF502	Netshelter SX Roof Fan Tray 208-230 VAC	Black		•		•				
ACF503	Netshelter SX Roof Fan Tray 115 VAC 750mm	Black			•		•			
ACF504	Netshelter SX Roof Fan Tray 208-230 VAC 750mm	Black			•		•			
AR201BLK	Rack Side Air Distribution 2U 115V 60HZ	Black	•	•	•	•	•			
AR202BLK	Rack Side Air Distribution 2U 208/230 50/60HZ	Black	•	•	•	•	•			

Since 1981, APC has been a global leader in power availability solutions, setting the industry standard for quality, innovation, and support. From its corporate headquarters in West Kingston, Rhode Island, APC operates sales offices throughout the world and manufacturing facilities on four continents and distribution facilities on five continents. APC ships products to over 150 countries.

Over 15 million satisfied customers worldwide depend on APC's Legendary Reliability®. Propelled by real-world experience and a drive towards technological innovation, APC has the experience, scale, global presence, and stability to respond to emerging IT availability needs.



"... the highest technical support rating received by any vendor in any category of the 2002 Channel Champions Survey."  
— Channel Champions 2002 – Rack-Mounted UPSs, *Computer Reseller News*, Mark Spiwak



To receive a FREE APC white paper on essential rack systems requirements for next generation data centers, please visit us online at <http://promo.apc.com> and enter key code **p733y**. Other APC white papers are also available.

**APC Corporate**  
**APC North America**  
132 Fairgrounds Road  
West Kingston - RI 02892  
Visit: [www.apc.com](http://www.apc.com)  
E-mail: [apcinfo@apcc.com](mailto:apcinfo@apcc.com)  
Call: (+1) 401-789-0204  
Fax: (+1) 401-789-3710

**APC Latin America**  
5301 Blue Lagoon Drive,  
Suite 610, Miami - FL 33126  
Call: (+1) 305-266-5005  
Fax: (+1) 305-266-9695

**APC Europe**  
**APC Ireland**  
Ballybrit Business Park  
Galway - Ireland  
Call: +353 91 702000  
Fax: +353 91 756909

**APC Asia Pacific**  
**APC Australia**  
Level 13, The Denison  
65 Berry Street  
North Sydney - NSW 2060  
Call: +61 2 8923 9373  
Fax: +61 418 441 338

**Austria**  
Tel: (+43) 081 00011 98  
**Balkans**  
Tel: (+36) 1 487 6220  
**Benelux**  
Tel: (+31) 0347 325 200  
**Central Africa**  
Tel: (+353) 91 702 287  
**Czech & Slovak Rep.**  
Tel: (+420) 2 4144 2404  
**Denmark**  
Tel: (+45) 70 27 01 58  
**East Africa**  
Tel: (+27) 11 465 5414  
**Finland**  
Tel: (+358) 2 2444 745

**France**  
Tel: 0805 110 053  
**Germany**  
Tel: 0800 101 0067  
**Greece**  
Tel: (+30) 210 727 9221  
**Hungary & South-Eastern Europe**  
Tel: (+36) 1 272 4000  
**Ireland (Dublin)**  
Tel: (+353) 1 8486033  
**Italy**  
Tel: 800 905 821  
**Middle East**  
Tel: (+971) 4 3433 404  
**Moscow**

Tel: (+7) 495 929 9095  
**North Africa**  
Tel: (+33) 1 41 90 5239  
**Norway**  
Tel: (+47) 6675 8646  
**Novosibirsk**  
Tel: (+7) 3832 277 999  
**Poland**  
Tel: (+48) 22 666 0011  
**Portugal**  
Tel: (+351) 21 850 41 00  
**South Africa**  
Tel: (+27) 11 465 5414  
Service: 0861 272 877  
**Spain**  
Tel: 800 099 340

**Sweden**  
Tel: (+46) 8 564 826 00  
(+46) 0200 89 52 83  
**Switzerland**  
Tel: (+41) 56 437 62 62  
**Turkey**  
Tel: (+90) 216 362 0000  
Service: 0800 261 21 35  
**UK**  
Tel: 0800 2799 254  
**Ukraine**  
Tel: (+380) 44 494 21 07  
**West Africa**  
Tel: (+27) 11 465 5414

APC's manufacturing system is certified to ISO9001 & ISO14001 standards.



**APC**  
Legendary Reliability™