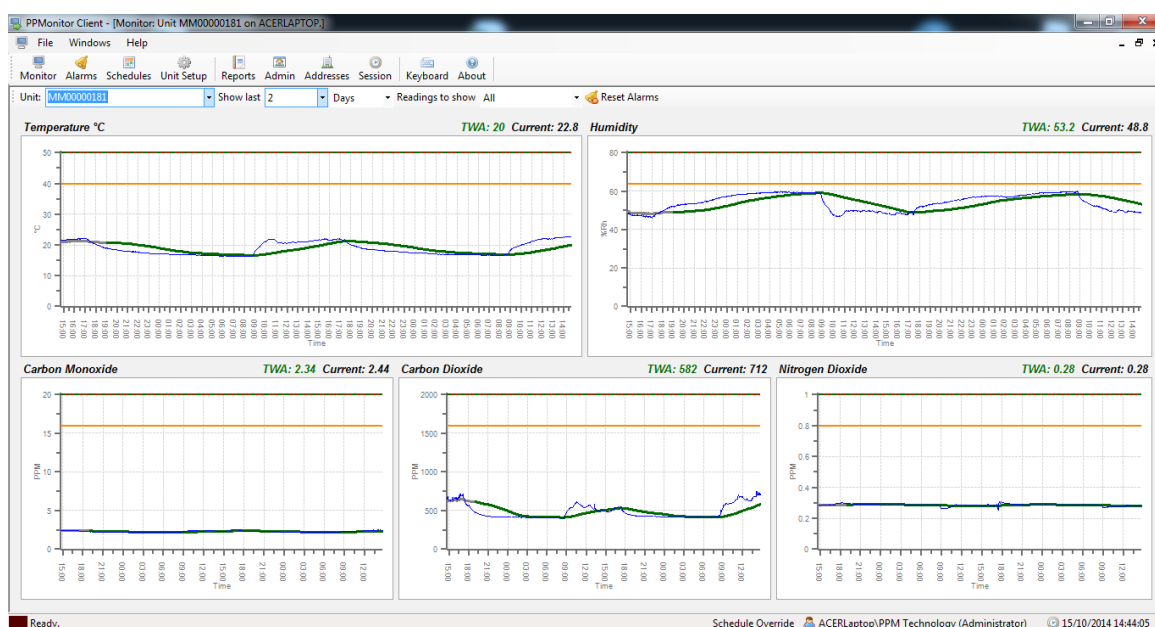


PPMonitor

Version 2.2.1.3

Software Manual



PPM Technology Ltd
Units 34-35 ° Cibyn Industrial Estate
Caernarfon ° LL55 2BD ° Wales, UK

www.ppm-technology.com
info@ppm-technology.com
Tel: +44 (0)1286 676 999
Fax: +44 (0)1286 671 811

Contents

This user manual should be used in conjunction with the **Wireless IAQ Profile Monitor User Manual**.

This user manual applies to the PPMonitor software version 2.2.1.3. If you are unsure which version of the software you are running, click **About** on the menu bar or select **Help > About PPMonitor** and the version number will be listed here.

Contents.....	2
1 Setup.....	3
1.1 System Requirements.....	3
1.2 Installation.....	3
1.3 Upgrading.....	5
2 Startup.....	6
2.1 Before first run.....	6
2.2 Starting the software for the first time.....	7
3 Monitoring.....	10
3.1 Graph overview.....	11
3.2 Detailed graph view.....	14
3.3 Importing data from a Touch Screen Unit.....	15
4 Alarms.....	17
5 Schedules.....	18
5 Shedges.....	19
6 Unit Setup.....	21
7 Reports.....	23
8 Admin.....	25
8.1 Company Info.....	25
8.2 Preset Times.....	25
8.3 Unit Groups.....	26
8.4 System Information.....	27
8.5 Colour.....	28
8.6 Alarm Labels.....	28
8.7 Locations.....	29
8.8 Messages.....	29
8.9 Paging.....	29
8.10 Email.....	30
9 Addresses.....	31
10 Session.....	32
11 Troubleshooting.....	33

1 Setup

1.1 System Requirements

	<u>Minimum</u>	<u>Recommended</u>
Operating System*	Windows XP Professional (Service Pack 3) Windows 7 Enterprise Windows 8	
Processor	Pentium III compatible processor	
Processor speed	1.0GHz	2.0GHz
RAM	512Mb	1Gb

*NOTE: Due to issues in gaining the necessary administrative rights, this system is unlikely to work on Windows Vista. Therefore, installation of this system on a Windows Vista PC is not recommended and will not be supported.

Please be advised that Microsoft have ended support for Windows XP as of the 8th of April 2014.

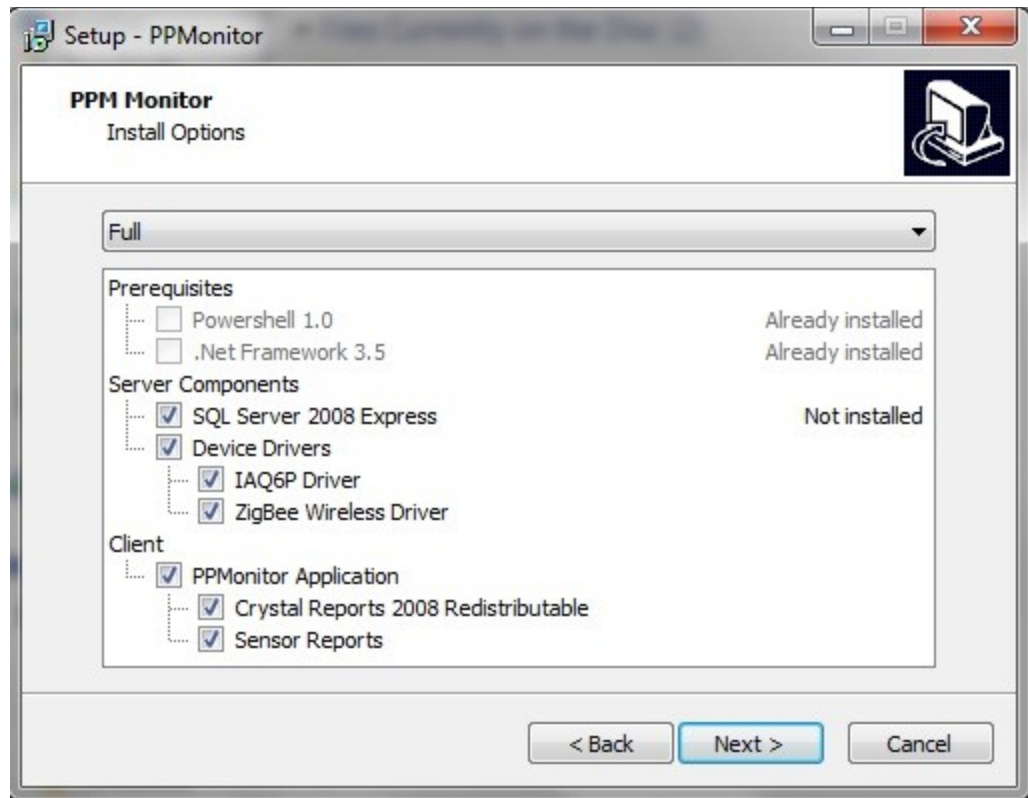
1.2 Installation

To install the system, you must first insert the CD. Once it has been inserted, access the drive by going to the **Start Menu > Computer**, and then double-clicking the CD drive. Before installing the system, it is important that you read the Readme file, which can be found in text, PDF and web formats. Once you are happy with the contents of the Readme, you can commence with installation.

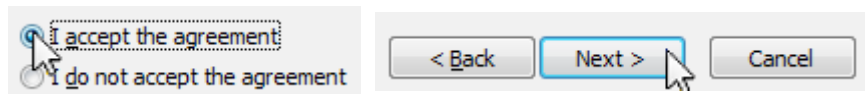
Within the CD drive, open the **PPMonitor** folder and start **Setup PPMonitor.exe**. The computer might ask if you want to allow the following program from an unknown publisher to make changes to this computer. You will need to choose **Yes** to begin the installation by bringing up the PPMonitor Setup wizard. Setup will help you install all the necessary components for the system which include Microsoft SQL Server, ZigBee drivers, the PPMonitor application and Crystal Reports. Pressing **Next>** on the PPMonitor Setup wizard will bring up the Install Options.

In the Install Options we would recommend that you install the Full version of the program, selecting all of the components available. The installer will begin by scanning your system for Microsoft SQL Server. If an available instance of this is found, the SQL Server 2008 Express will be grayed out and the install option for this will be marked as already installed. If this is the case you may have difficulty installing the PPM database due to the permission settings of the SQL Server and you should contact PPM Technology and your network support team for assistance.

If no instances of SQL Server 2008 Express is found, the following will appear:



Clicking **Next >** will take you to the license agreement screen. To continue, you must agree to the terms and click **Next >**.

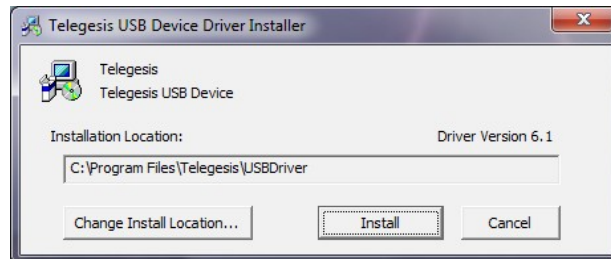


This will bring you to the Additional Tasks window where you can choose to have a desktop item and/or a quick launch item for the PPMonitor software.

After clicking **Next>**, installation of the SQL server will begin. You will be able to see the install progress of the SQL server and after the server is installed the PPM database will be created.

1 Setup

The next component to be installed is the crystal reports. After the crystal reports is installed, you will be taken to the Telgesis driver installer. Clicking **Install** will begin the installation of the driver.



Once setup has completed the installation of the client, click **Finish**, and the system has now been set up. You will need to restart the computer before you run the PPMonitor software for the first time.

1.3 Upgrading

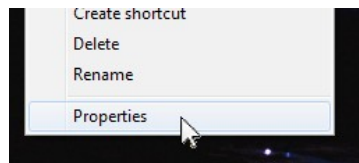
If you have running an older version of PPMonitor (2.2.0.1 or earlier) then you will need to completely remove the old software before you install the new version. You can do this using the **PPMonitor Removal tool** located in the **Tools>Misc>PPM** folder of the CD. However if you have already installed PPMonitor version 2.2.0.1 or higher then you can upgrade the software without removing the old version.

You will need to stop both services associated with the PPMonitor program before navigating to the **Upgrade** folder in the CD. In this folder you will find a file called **Update PPMonitor.exe**. Run this program to update the software to the latest version. The program will first check if it can update your current version before running the update.

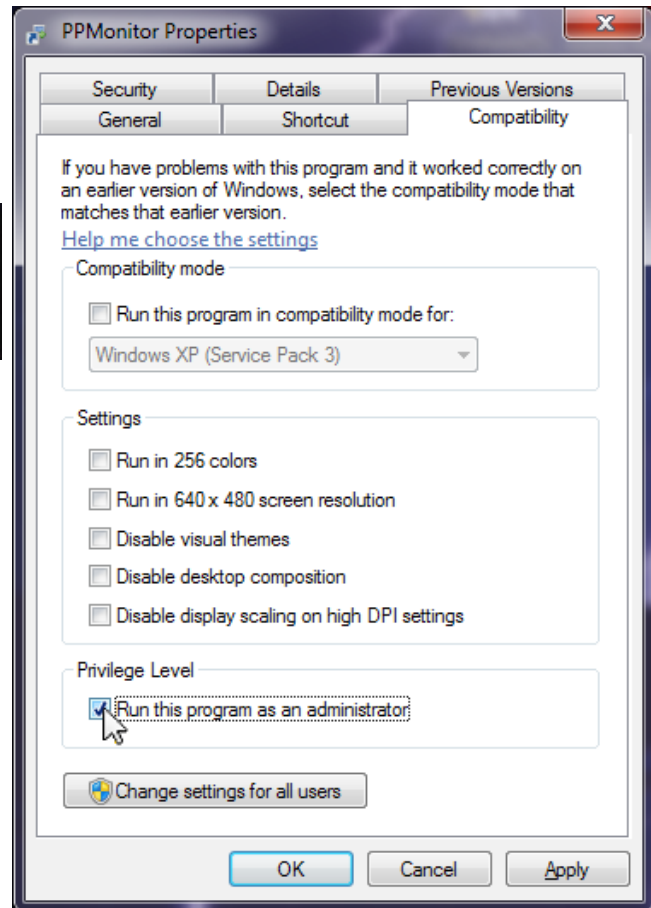
2 Startup

2.1 Before first run

Before starting the software for the first time, find the desktop icon, right-click on it and select **Properties**.



Once in the properties window, go to the **Compatibility** tab, and tick the box labelled **Run this program as an administrator**. After this, click **OK**.



2 Startup

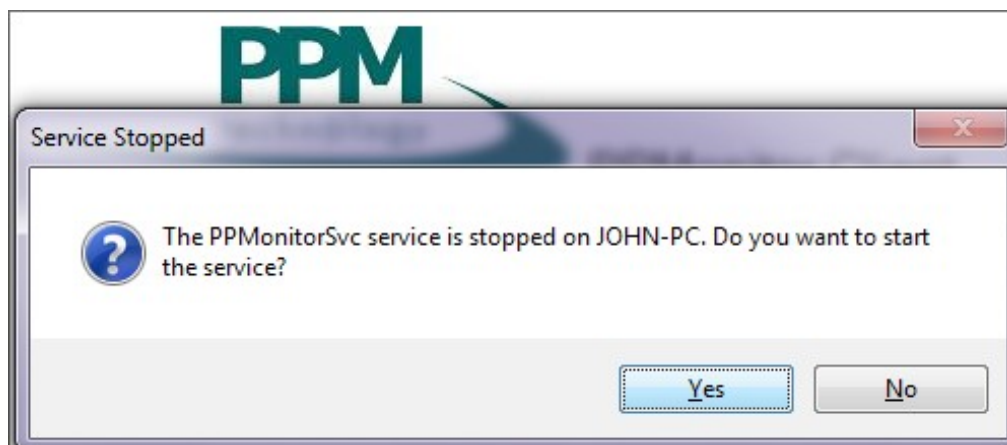
2.2 Starting the software for the first time

To start the software, double-click the desktop icon.



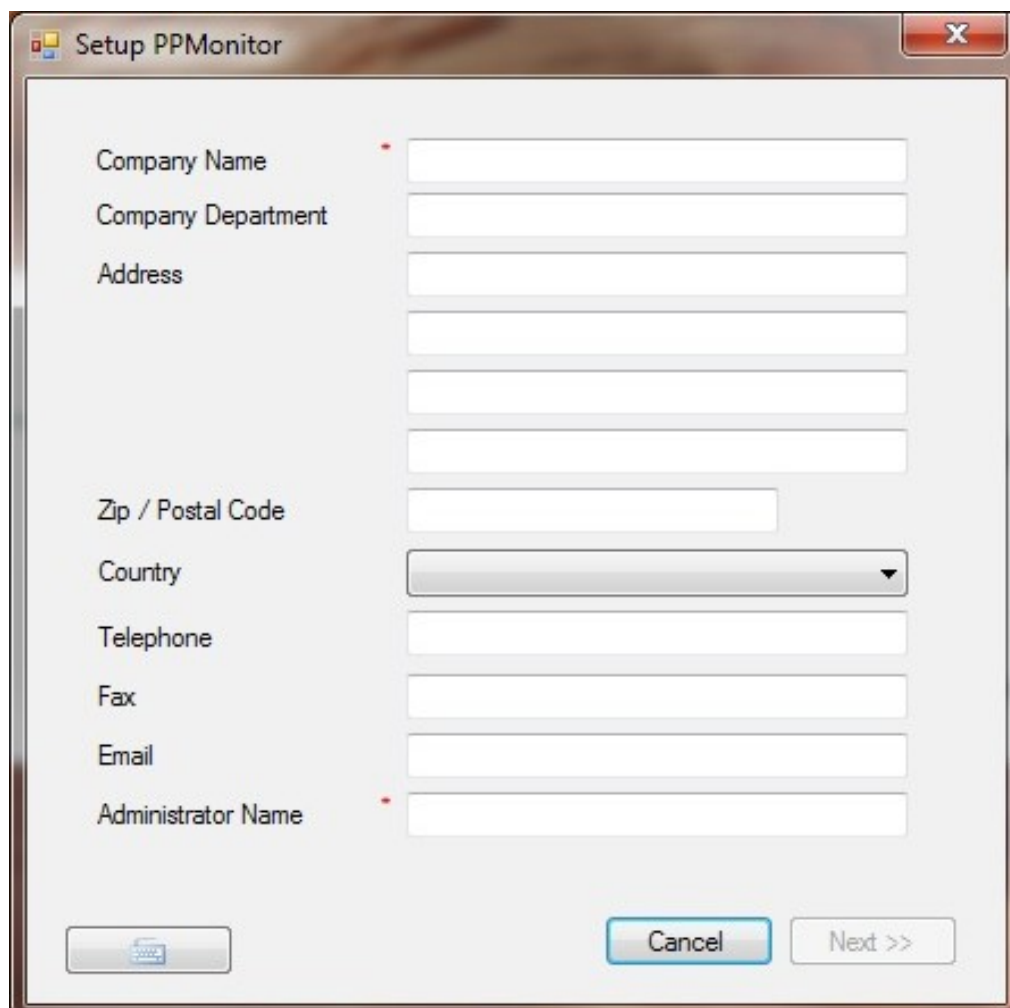
NOTE: The software is split into two parts; the client and the services. The client provides the graphical user interface you are viewing, and the services record data and interface with the wireless units. The services must be running any time you wish to record data.

The splash screen will now appear. If the services are not running, you will be prompted to start them.



For the software to run successfully, both services must be running, so click **Yes** to both prompts.

The first time the software is run, the **Company Info** screen will appear. You are not required to enter all the data, but any field with an asterisk (*) is required to continue (If you wish to change these details in future, information on this can be found in section 8.1).



Setup PPMonitor

Company Name *

Company Department

Address

Zip / Postal Code

Country

Telephone

Fax

Email

Administrator Name *

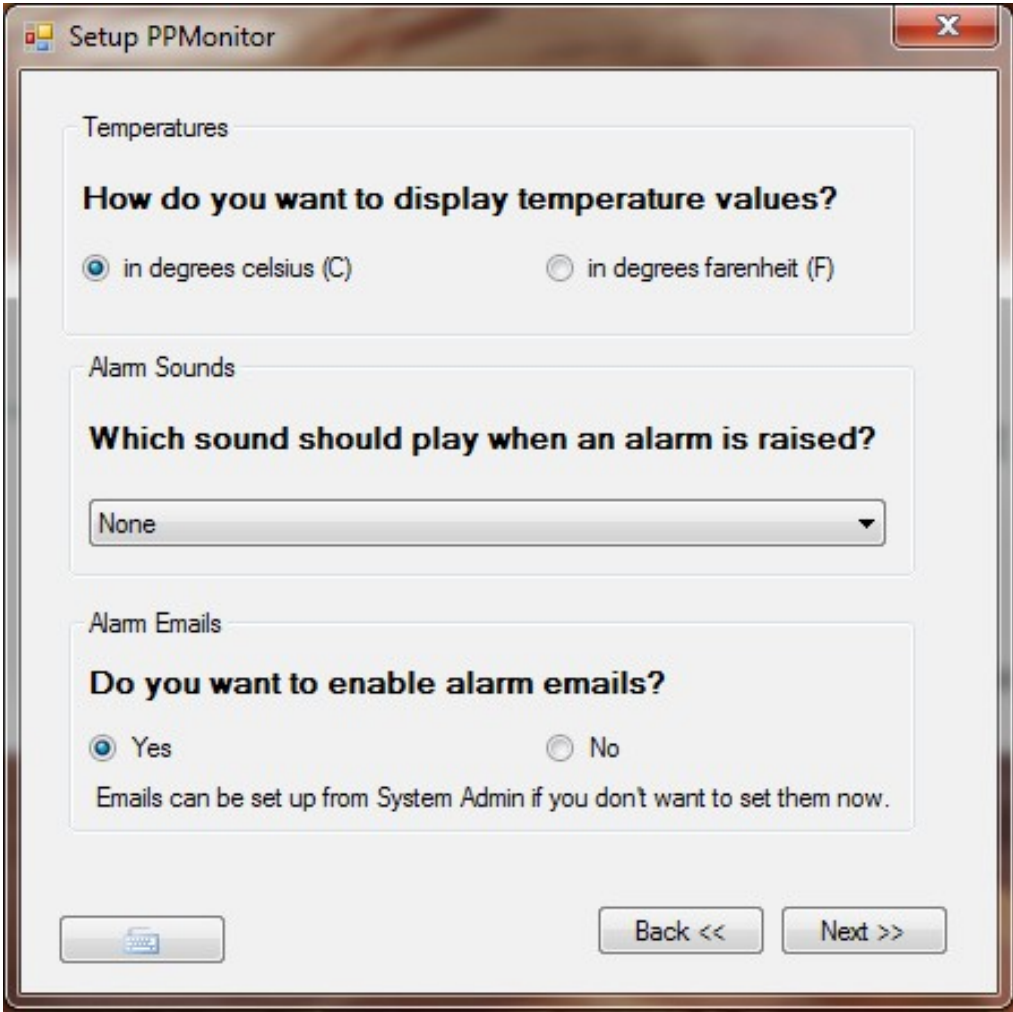
Cancel Next >>

Clicking on **NEXT** will bring you to the **Setup PPMonitor** screen. Here you can select your temperature scale, decide if you want an audible alarm and choose to receive e-mails if a ceiling alarm is breached.

TIP: After you have configured your Email Server Settings you can Send a Test Email to verify your settings.

NOTE: Once you have selected either 'degrees Celsius' or 'degrees Fahrenheit', this cannot be undone.

You will need to clear the database and loose all saved data if you wish to change to a different temperature scale.

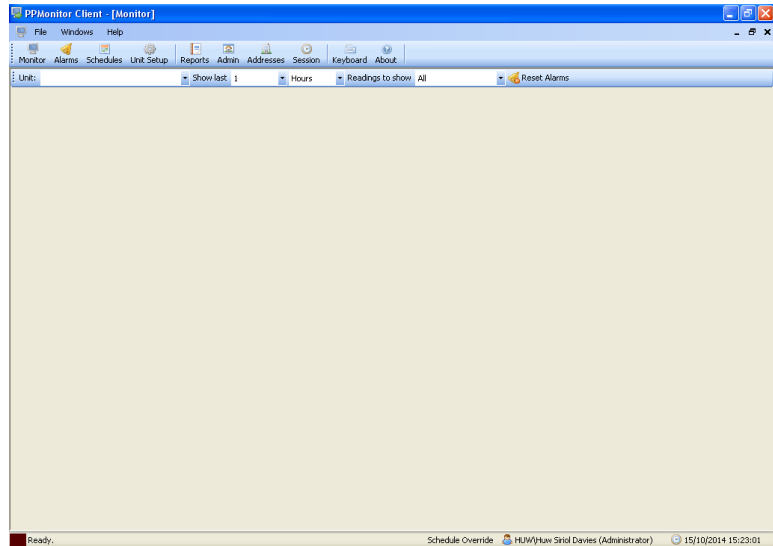


If you are using your PPMonitor software as a means of looking at touchscreen data only, then we would recommend not using audible alarms or alarm e-mails. If you choose to receive no e-mails then you can begin the program for the first time by pressing **Finish** (you can choose to setup e-mails at a later date). If you know your e-mail settings when you install the program, then you can choose **Yes** to the e-mail option by simply pressing **Next >>** and configure your email server settings before pressing the **Finish** button to start the software for the first time.

If you are unsure of how to setup the e-mailing system but would like them then you can set them up later in the e-mail section of the Admin screen (see section 8.10). Select **No** to the e-mail option for now then press the **Finish** button then contact PPMTechnology or your network administration team for assistance.

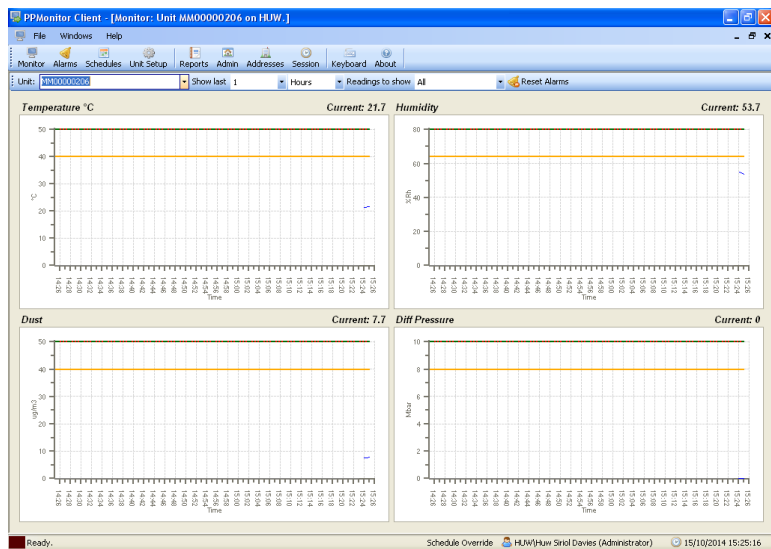
3 Monitoring

When opening the **Monitoring** window for the first time, there will be a blank screen while the system attempts to find the units on the network.



After a while, the system should find the units and begin recording the data.

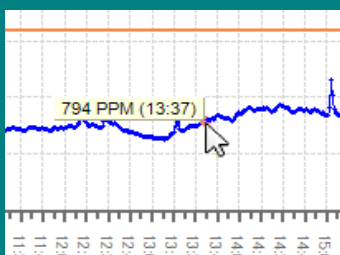
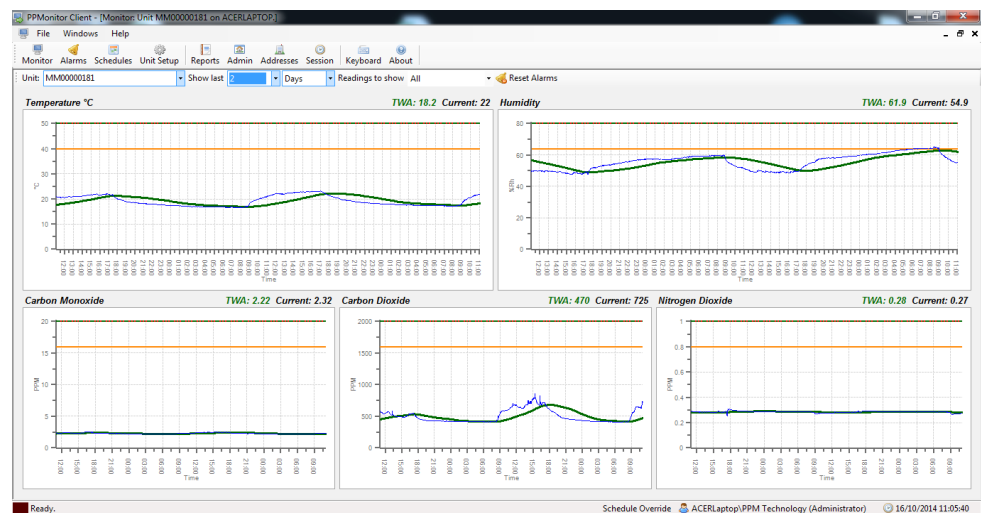
If no units have been detected after 10 minutes, please consult the troubleshooting section.



3 Monitoring

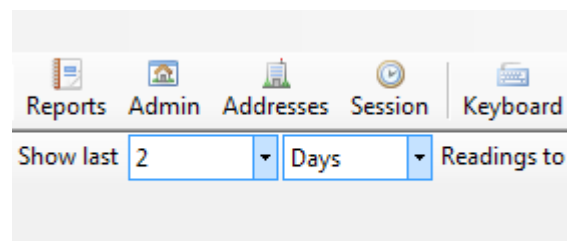
3.1 Graph overview

Clicking on the **Monitor** icon will bring up the monitoring window.



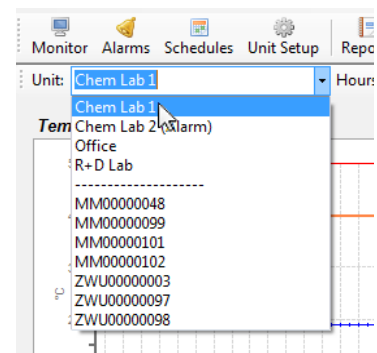
TIP:
Placing the cursor on the graph line will show the precise values and time. For the TWA line it will also tell you if it is the projected or actual TWA.

This window gives an overview of the data being recorded by a wireless unit in a series of graphs. In the above image, the data for the last 2 days is being shown. This can be changed using the **Show last** drop down menus. You can view 1 to 24 hours worth of data or 1 to 7 days worth of data.



In instances where there are multiple wireless units in use, the data for other units can be viewed by selecting them in the **Unit** drop down menu. They are separated into three main sections:

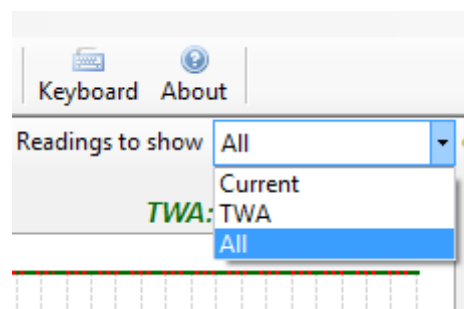
- Units currently transmitting (the top section),
- Units downloaded from a touch screen unit (the middle section)
- Units currently unavailable (the bottom section).



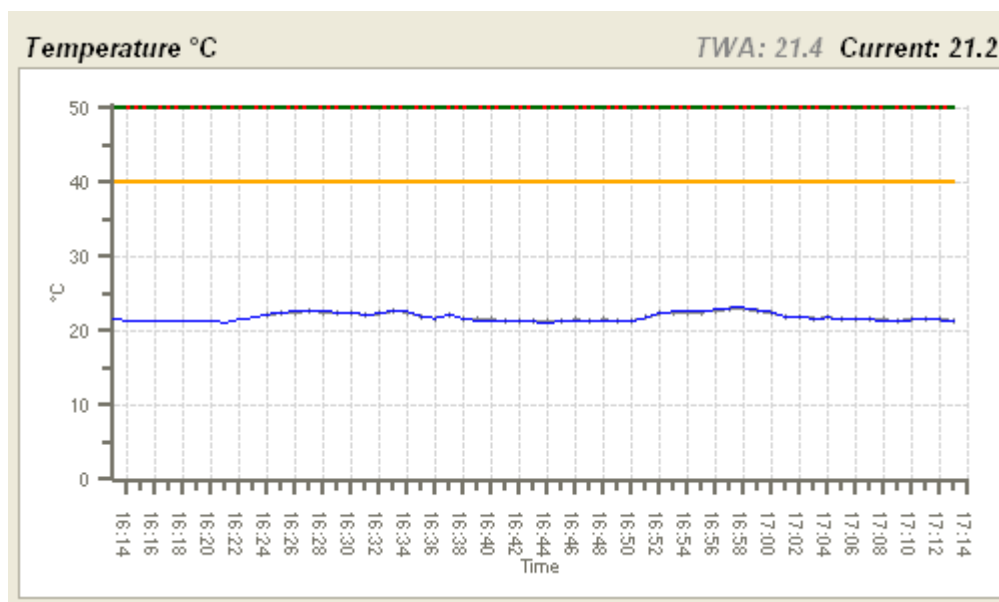
3. Monitoring

The monitoring screen has three **Readings to show** options, namely Current, TWA and All.

- Current shows only the graphs for the actual reading collected from the sensors on a minute by minute basis.
- TWA shows only the graphs for the Time Waited Avarage calculated from the past data. The TWA is based on an 8 hour time period. For the first 1 hour of continious readings¹ there is no TWA reading available due to insufficient data. A projected TWA is calculated by the software between 1 and 8 hours of continious readings¹. The last reading recived is projected for the reminder of the 8 hour TWA time period. After 8 hours of continious readings¹ the software calculates the actual TWA for that minute based on the last 8 hours of collected data.



- All shows both the Current and TWA graphs. This is the default view.

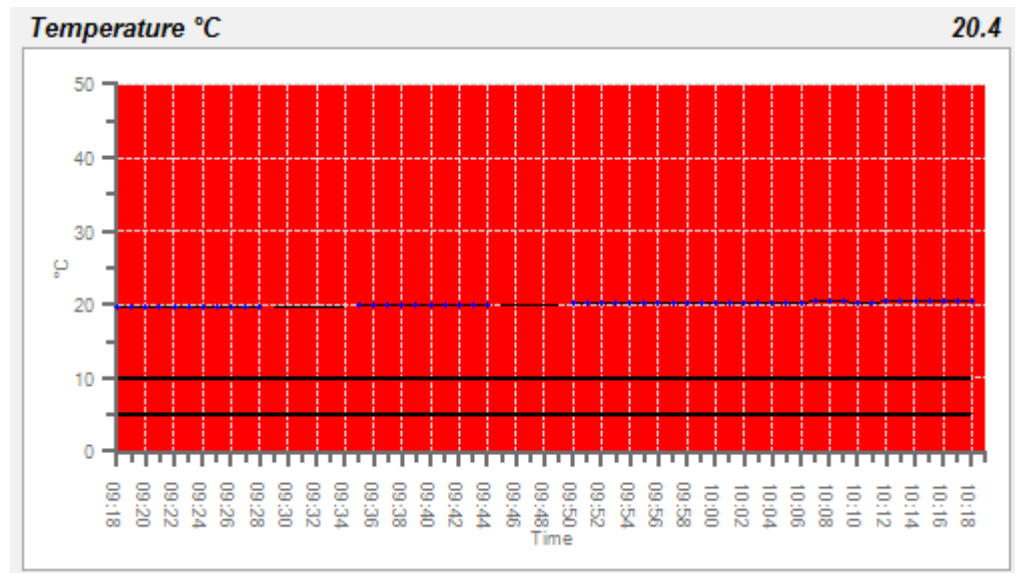


In the default view once a TWA value is available you will have an extra line, label and value on the top of each graph. For Projected TWA the TWA line, label, and calculated value is gray. Once you have collected enough data for an Actual TWA the line, label, and calculated value will turn green.

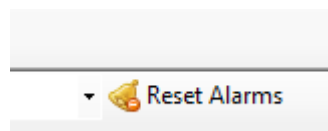
¹. There can be small gaps in the data but if there are large gaps then the TWA calculating time resets to 0 minutes.

3. Monitoring

In the event of an active alarm, the colour of the corresponding graph will change.



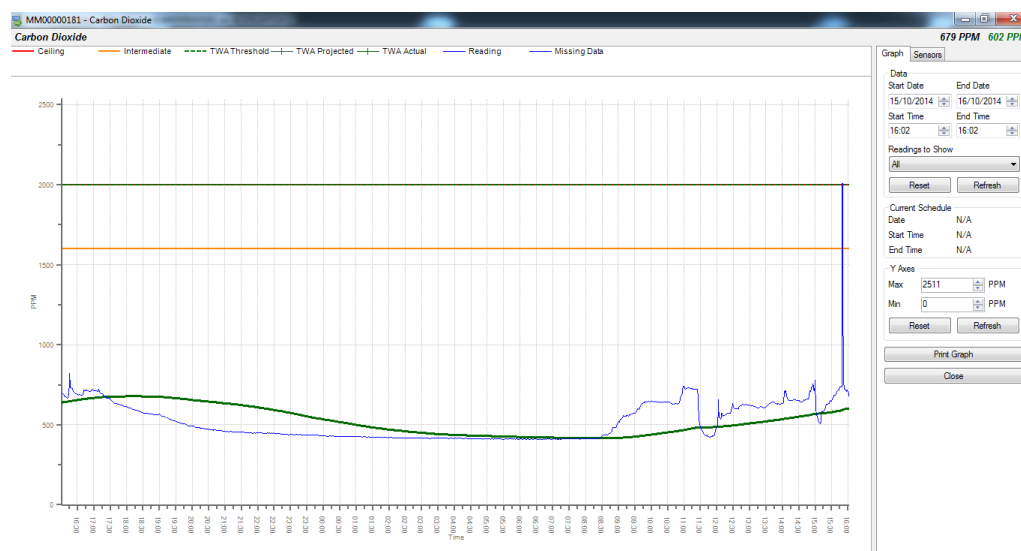
The above graph is showing values above the ceiling (which has been set to 10°C for demonstration purposes) and the graph has turned red. The default settings are red for a ceiling alarm and orange for an intermediate alarm. Pressing the **Reset Alarms** button will deactivate any outstanding alarms as long as the levels have dropped below the threshold.



3 Monitoring

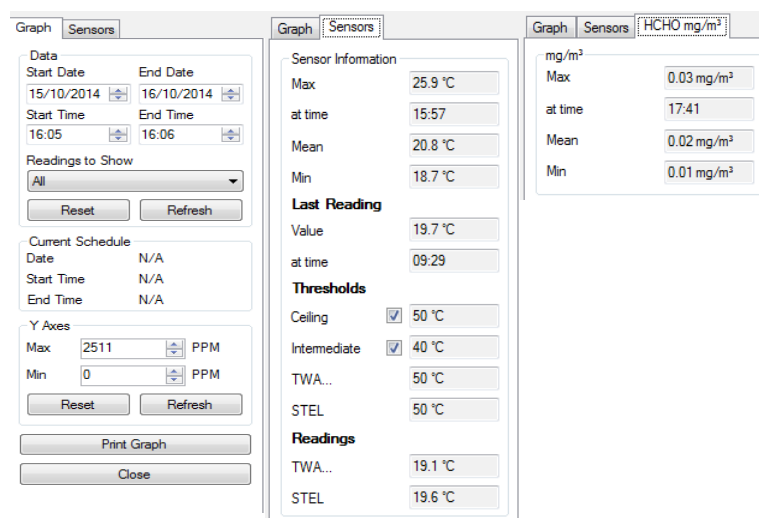
3.2 Detailed graph view

Double-clicking on a graph will bring up a more detailed view of the graph.



The panel on the right allows you to control the parameters of the graph. The **Data** section allows you to define the date range the graph displays. The **Readings to Show** section is the same as described in section 3.1. The **Current Schedule** section displays the scheduled times for recording information. The **Y Axes** section allows you to control the scale of the graph's Y axis. In the example above, the system is in schedule override mode, so "N/A" is displayed. **Print Graph** displays a printable version of the data.

Clicking on the **Sensors** tab displays some additional statistics for the sensor. The **HCHO mg/m³** tab, which is only available for formaldehyde, also displays some additional statistics.



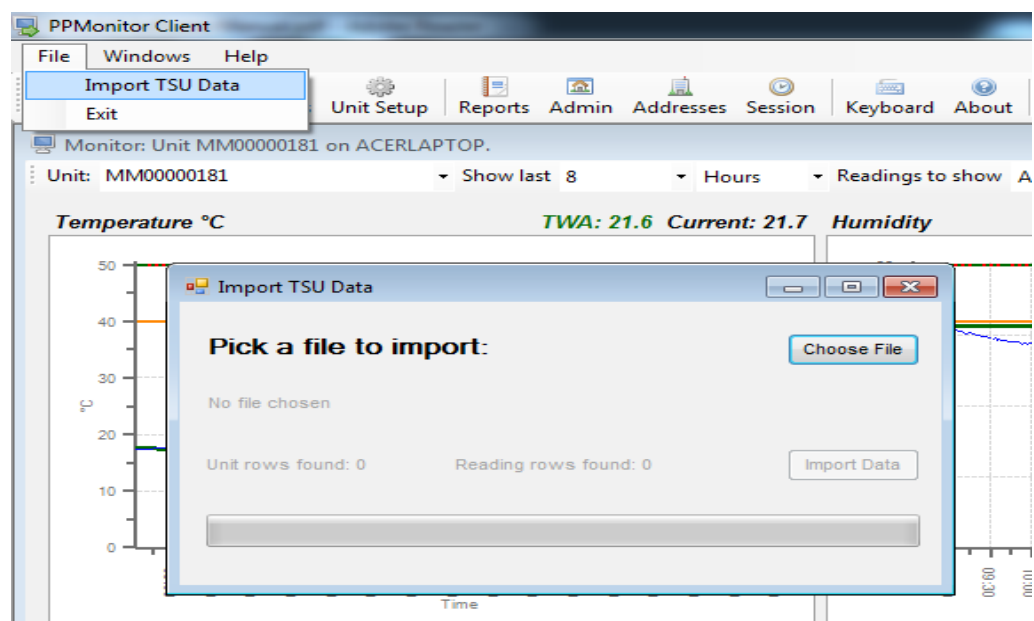
3 Monitoring

3.3 Importing data from a Touch Screen Unit

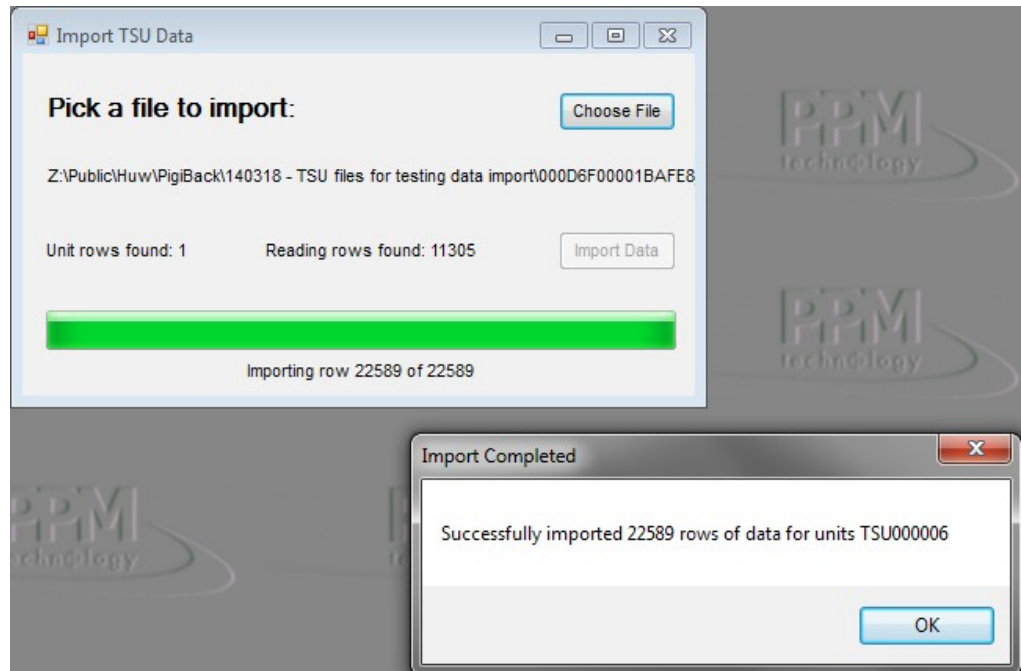
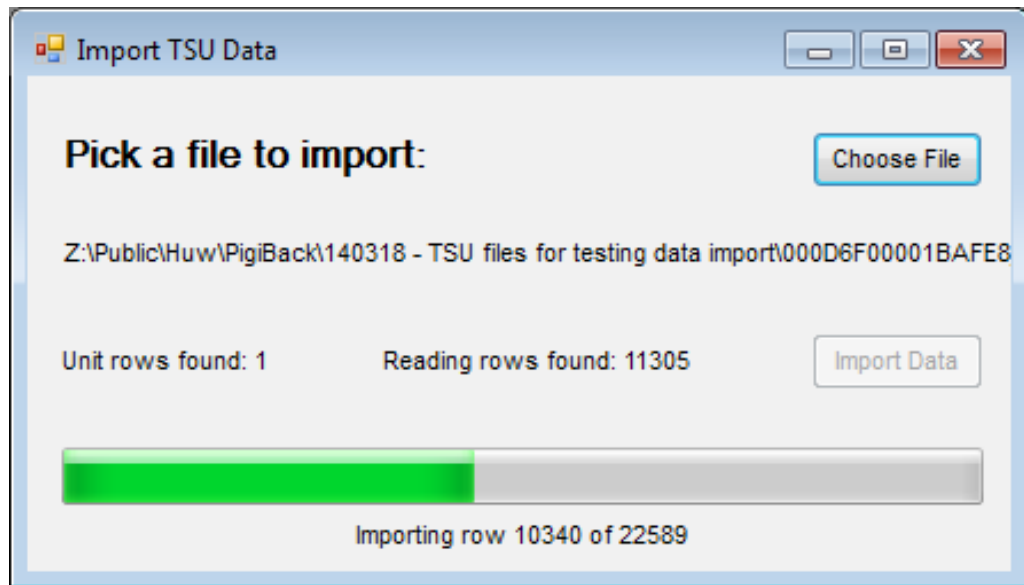
The Touch Screen IAQ Profile Monitor is a stand-alone Indoor Air Quality (IAQ) monitoring unit, capable of monitoring multiple IAQ parameters. Sensor readings are displayed continuously and in real time on an inbuilt LED screen.



The Touch Screen unit has a USB port which can be used to download the data collected on the device. The downloaded data can then be imported by the PPMonitor program and viewed in the PPMonitor software by clicking on **FILE** and then on **IMPORT TSU DATA**. Choose the file containing the data on the USB module and select **IMPORT DATA**.



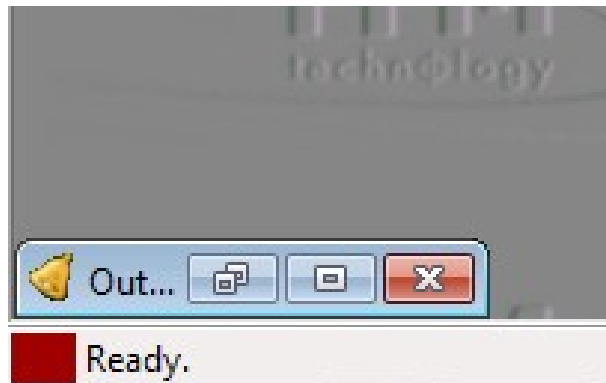
Please wait while the data is imported (time will vary depending on the amount of data to be imported)



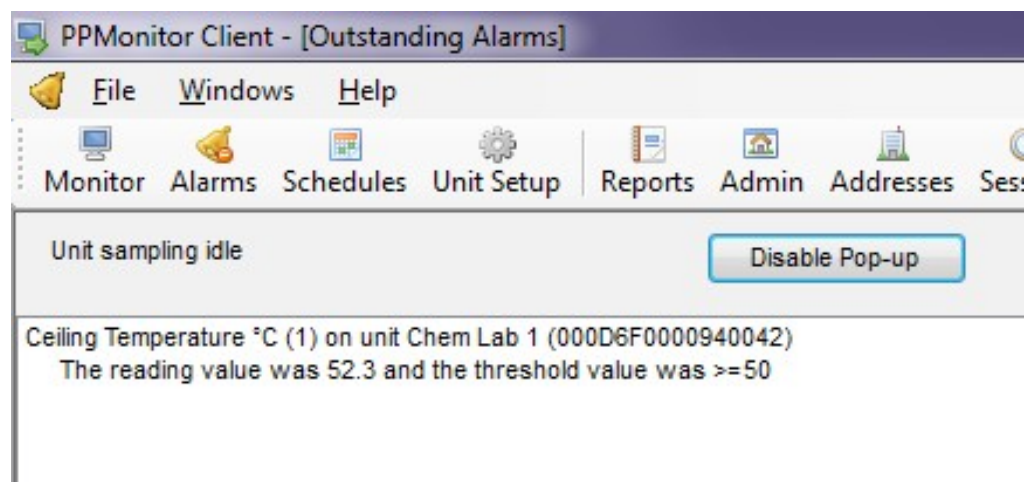
Once data has been successfully imported, it will be notified in the session history (see section 10).

4 Alarms

By default, the alarm window is minimised at the lower left of the screen.



This window will automatically pop up when there is an ongoing alarm, but it can also be accessed by clicking restore or maximise on the minimised window, or clicking the **Alarms** button at the top of the screen. When the alarm window is active, it will display any current alarms and give additional details (unit name, reading value, threshold value etc.)

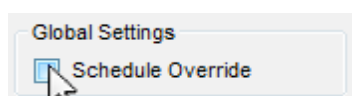
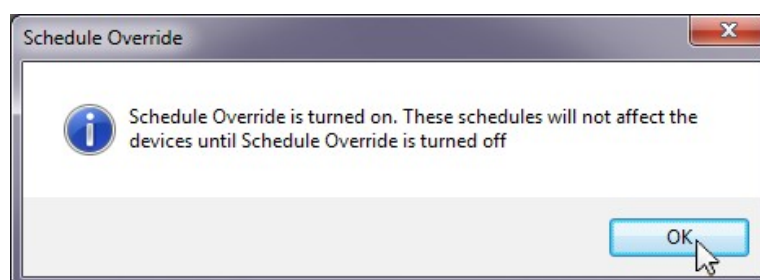


Clicking the **Disable Pop-up** button will stop the alarm popping up, and it will need to be accessed manually.

Information on setting up alarms can be found in section 6 of this manual (Unit Setup).

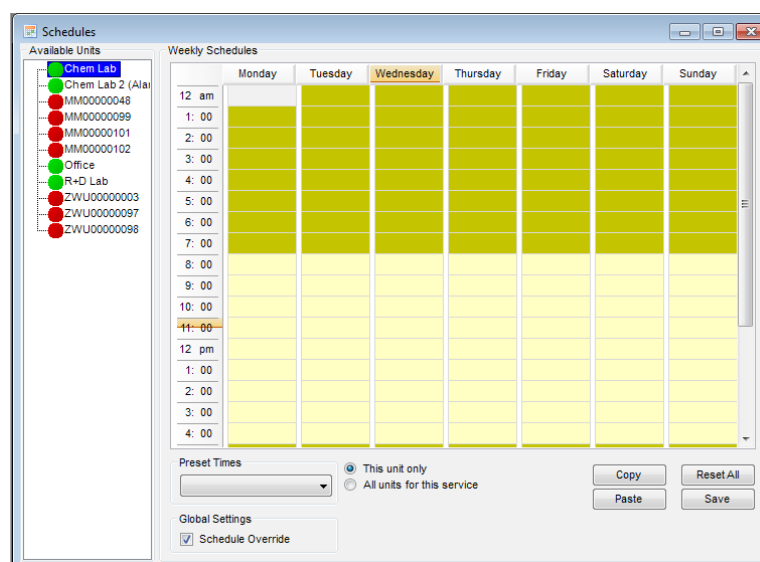
5 Schedules

The schedules window allows you to control the times at which data from the units is recorded. The window can be accessed by clicking **Schedules** on the menu bar. By default schedule override is turned on and a message will pop-up notifying you of this.



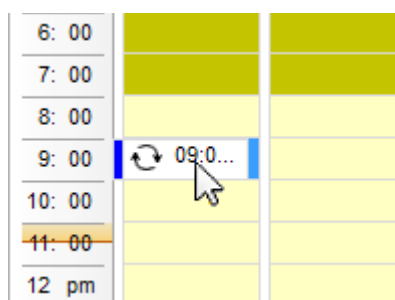
While in schedule override mode, data from the units will be continuously recorded. For any schedules to take effect, the **Schedule Override** tick box must be unticked.

Within the schedules window, there is a panel on the left to select units, and a week view displaying schedules.

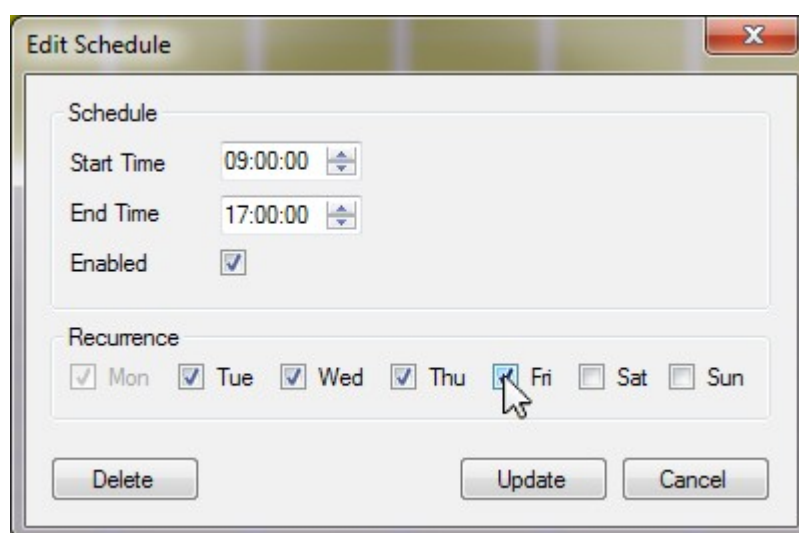


The above window currently contains no schedules. To create one, double-click on a time cell.

5 Schedules

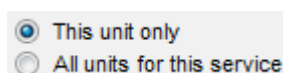


A schedule unit has now been created. Double-clicking on this unit allows you to further modify the times and days of this schedule unit.



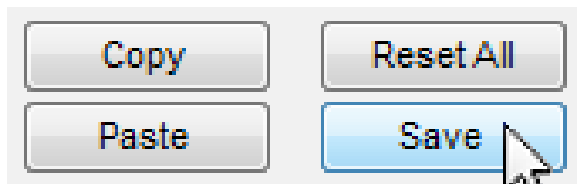
The start and end times can be changed by using the arrow buttons. If the same schedule recurs on other days of the week, ticking the appropriate boxes under **Recurrence** will automatically copy the schedule to these days. Once the schedule is complete, clicking **Update** makes the changes to the schedule. Accessing the same window and clicking **Delete** will remove the schedule.

Once the schedule is complete, by default they are applied to one unit. It is possible to apply the schedule to multiple units by selecting **All units for this service**.



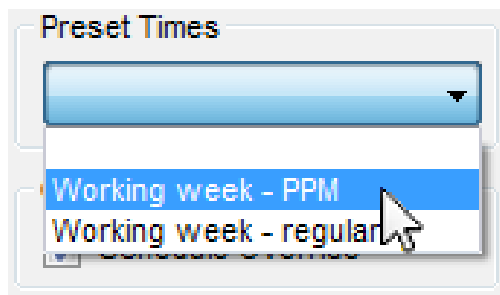
5 Schedules

After making this selection, the schedule can be saved using the buttons at the lower right of the window.



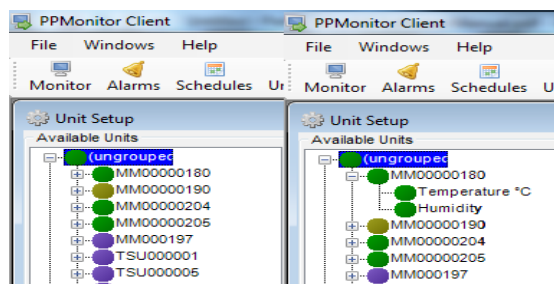
To copy a schedule from one unit to another, select the unit with the schedule and click **Copy**. Then select the unit to copy the schedules to, and click **Paste**. The schedules must be saved after copying. The **Reset All** buttons removes all schedules from all units.

If you have stored presets, they can be applied to a unit by selecting the appropriate preset, and clicking **Save**. Information on creating presets can be found in section 8.2 (Preset Times).



6 Unit Setup

When opening the Unit Setup window, the first thing you will encounter is the list of groups and units. First you will see the ungrouped units followed by the grouped units with each group appearing in alphabetical order. Within the list, clicking the **+** next to the unit will expand it and show the measurements the unit is capable of taking.

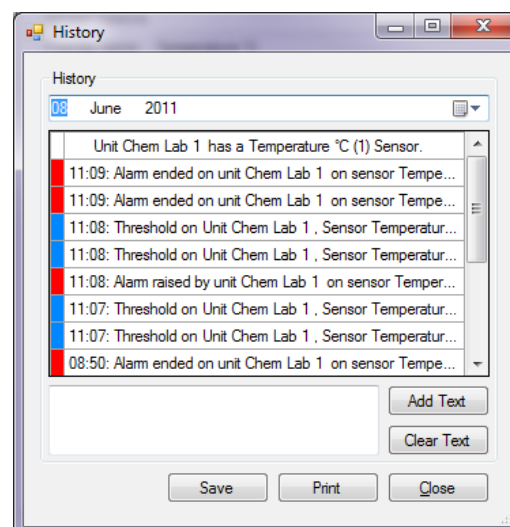


Within the options of a unit, the following information will be displayed.





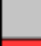


Unit Options	
Name	Chem Lab 1
Location	
Port	COM3
Serial Number	MM00000180
Number of Relays	0

Within these options, you are able to change the name of the unit (which is the serial number by default) to something more friendly. You can also change the location of the unit (more on locations in section 8.7). Since we can now receive data from multiple COM Ports the COM port number receiving data from the unit in question is shown. Changes made here can be saved by clicking **Save** at the lower right of the window.

Clicking **Unit History** brings up this window. Within this window is a list of the unit's activity for the entire day. Other days can be viewed by changing the date at the top of the window. Most items in the history are computer generated, but it is possible to add your own text to the history by typing in the box and clicking **Add Text**.



The circle next to the unit name indicates the current state of the unit. By default the colours are set as follows:

	Unit active
	Unit inactive / disabled
	Unit idle
	Unit alarm
	Unit hidden
	Unit missing
	Imported Unit

The colours can easily be changed, and information on doing this can be found in section 8.5 (Colour).

6. Unit Setup

The unit history for the selected date can be saved as a text file by clicking **Save**. The **Print** button generates a printable version of the history.

Clicking one of the subcategories will take you to the sensor and threshold settings.

NOTE: Relays can only be used under two circumstances:

1. The wireless unit has its own relays.
2. The wireless unit is in a group where there is a master unit with relays (more on unit groups in section 8.3).

TIP: Relays are devices that open and close an external circuit. They have many potential applications, such as activating a siren when levels of a chemical become dangerous, or activating a climate control system at a certain temperature.

The screenshot shows the 'Unit Setup' window with the 'Sensor' tab selected. The left pane shows a tree of available units, with 'Temperature °C' selected. The right pane displays settings for unit 'MM00000180'.

Sensor Options:

- Unit Name: MM00000180
- Friendly Name: Temperature °C
- Readings: °C
- Enabled: ☒ Enabled
- Hide: ☐ Hide

Threshold Settings:

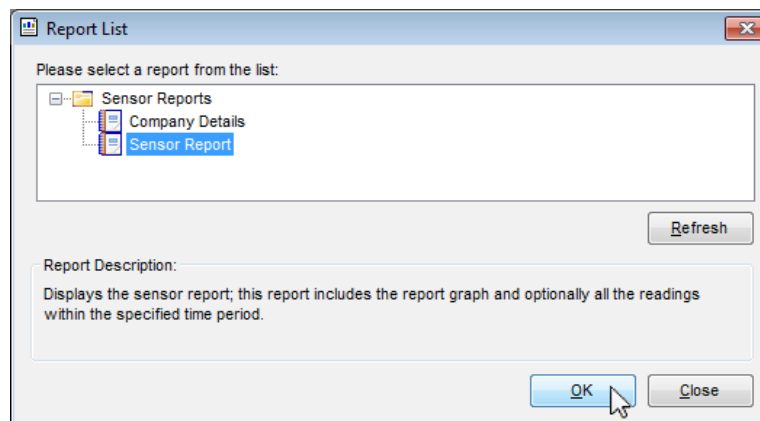
Threshold	Operator	Value	Relays	Duration	Sound
Ceiling	>=	50.0 °C	None	1 MIN	0s
Intermediate	>=	40.0 °C	None	1 MIN	0s
STEL	>=	50.0 °C	None	1 MIN	0s
TWA...	>=	50.0 °C	None	1 MIN	0s

Buttons: Sensor History, Save

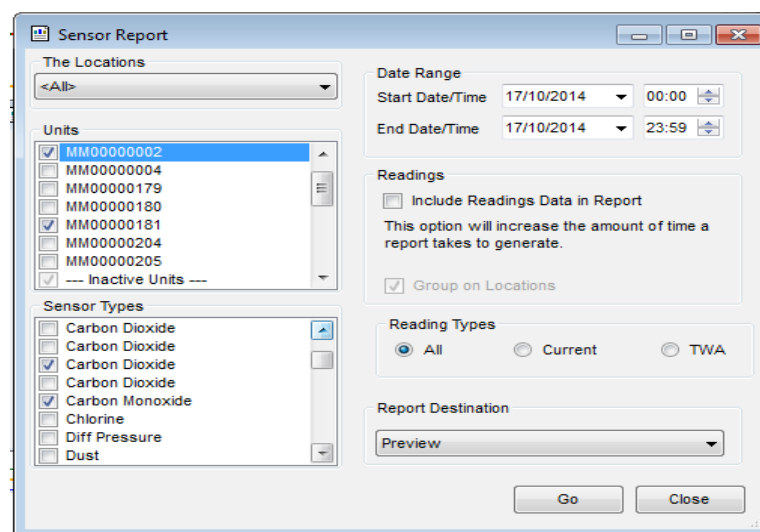
On this screen, you can change the name of the measurement taken. Threshold settings allow you to change the thresholds which trigger the alarms to match your own safety regulations. Which relays activate with which alarm and the duration they remain on can be set under **Relays** and **Duration**, respectively. The colour option sets the background colour of the graph in use when an alarm is triggered. The settings here are not stored until **Save** is clicked.

7 Reports

The Report feature allows you to generate a report of sensor activity for a specific duration. Clicking **Report** brings up the report window.



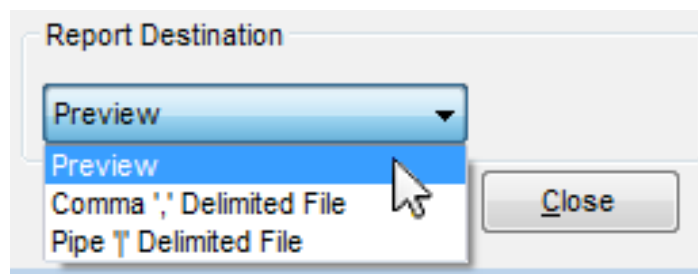
Selecting **Company Details** will generate a document containing the company details only (how to set company details in section 8.1). The company details are also included in the **Sensor Report**. Clicking **OK** takes you to the next screen, where more parameters can be set.



To generate a report, you must select the units and sensors to include data from, and then select the date range you wish to get readings from. The units are ordered in three sections which are: Active Units, Inactive Units and Touch Screen Units. When you select a unit from the Units list it will automatically select all sensors present on that list in the Sensor Types list. If you are only interested in particular sensors for your report then you can uncheck the unwanted sensors from the Sensor Types list. Selecting **Include Readings Data in Report** will include all the readings taken by the sensor in the report if **Preview** is selected.

7 Reports

To generate the report, you must select its destination. Select **Preview** for an instantly readable and printable format. Preview Reports are also effected by your Reading Types radio button selection. You can include only Current readings, only TWA readings or both these reading types (by selecting All) in your preview reports. If you wish to manipulate the data in another software package (such as Microsoft Excel), the report can be exported in a comma delimited file which can be read externally. In locales where the decimal separator is the comma, a pipe delimited file can be generated instead. For comma and pipe delimited files only the current readings are included. If you want to report the TWA values for these then you can calculate them yourself using the other software package.



Once all the parameters have been selected, clicking **OK** will generate the report. If **Preview** was selected, a preview window will open which includes the report. The navigation on the left allows you to view the report details for each individual unit and sensor, and the arrow buttons at the top of the window allow you to navigate between pages in the report.

8 Admin

8.1 Company Info

The company info screen allows you to enter the details of the company using the software. These details will then be used by the software to generate reports.

System Administration

Company Information | Preset Times | Unit Groups | System Information | Colour | Alarm Labels | Locations | Messages | Paging | Email

Company Name * PPM Technology Ltd

Company Department Research and Development

Address Units 34,35 & 37
Cibyn Industrial Estate
Caernarfon
Gwynedd

Zip/Postal Code LL55 2BD

Country United Kingdom

Telephone +44 (0)1286 676 999

Fax +44 (0)1286 671 811

Email info@ppm-technology.com

To change the email address please use the Email tab.

Administrator Name * Huw

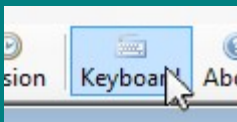
Save

For systems without a keyboard, the onscreen keyboard utility can easily be accessed by one of three methods:

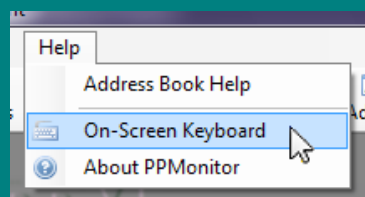
1. Clicking the keyboard button within the window.



2. Clicking the keyboard icon on the menu bar.



3. Selecting **Help > On-Screen Keyboard** from the menu bar.



8.2 Preset Times

The Preset Times screen allows you to create schedule presets to use in the schedules.

To create a preset, you must first create a schedule

(information on how to do this in section 5). Once you have completed the schedule, enter a name for it and click **Save**.

System Administration

Company Information | Preset Times | Unit Groups | System Information | Colour | Alarm Labels | Locations | Messages | Paging | Email

Weekly Schedule Presets

	Monday	Tuesday	Wednesday	Thursday	Friday	Saturday	Sunday
7 am							
8:00							
9:00	09:00-17:30	09:00-17:30	09:00-16:30	09:00-17:30	09:30-14:30		
10:00							
11:00							
12 pm							
1:00							
2:00							
3:00							
4:00							
5:00				09:00-17:30			
6:00							
7:00							

Update or Delete Presets: Working week - PPM [Update] [Delete]

Save New Presets: Example 1 [Save]

Save New Presets

Example 1

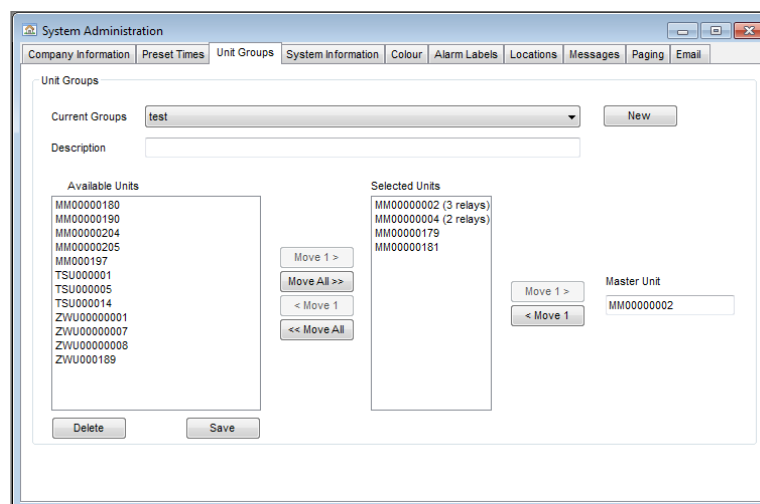
Save

8 Admin

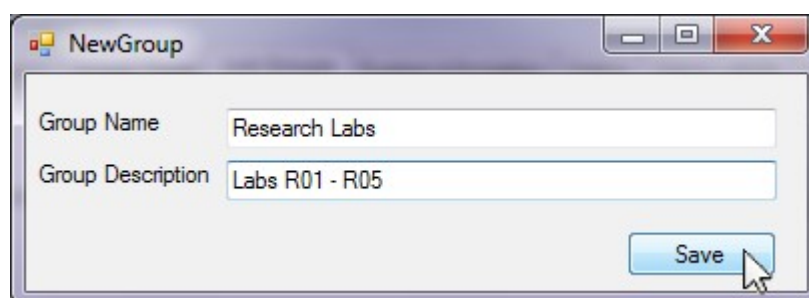
8.3 Unit Groups

NOTE: A unit can only be assigned to one group at any one time.

The Unit Groups section allows you to assign all the wireless units into groups. This allows units without relays to make use of relays in other units. To move units between groups, select the group from the drop down menu and move the units across. Moving to the right adds a unit to the group while moving to the left removes a unit from the group. You can also select a master unit for the group. To become a master unit, it must contain relays. The relays on the master unit may then be used by other units within the group.



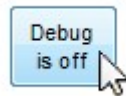
To create a new group, you must click **New** next to the drop down box, and a window will appear. In this window, you can enter a name and an optional description. Clicking **Save** then creates the group.



8 Admin

8.4 System Information

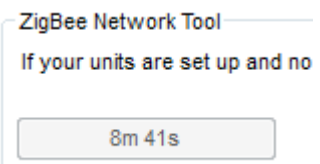
Within the system information section are two useful tools; debug mode and the ZigBee Network Tool.



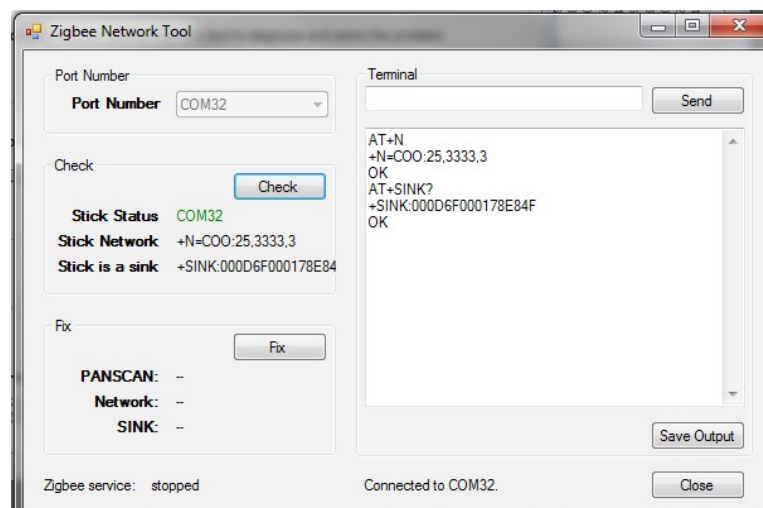
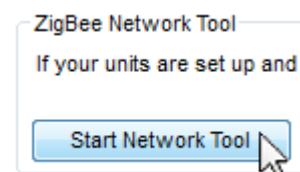
In the event of a problem with the software, you may be asked to place the software in debug mode. To do this, click the button labelled **Debug is off**, and it should change to **Debug is on**.

When in debug mode, a text file is generated. These files can be found in **C:\ppm** and will be titled with the date.

If the system is not finding any of the wireless units, you may need to use the ZigBee Network Tool. When a connection to the wireless units cannot be established, the button will display a 5 minute countdown.



Once the 5 minutes have elapsed, the tool will be available to use. Click on **Start Network Tool** and the following window will open.

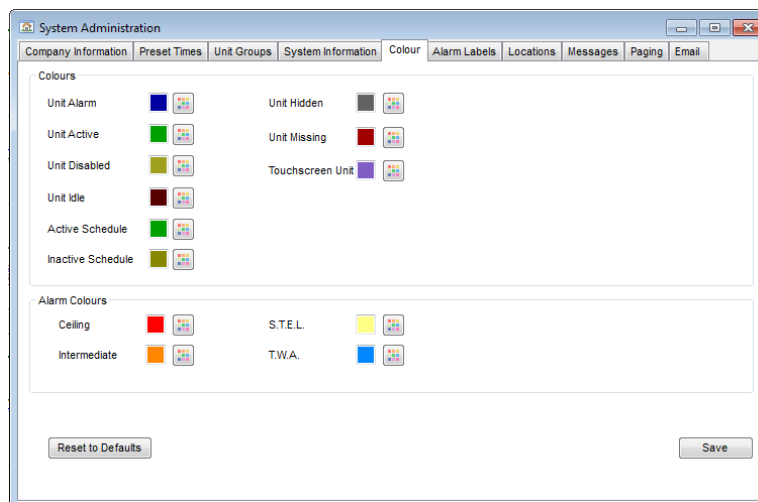


Since the ZigBee Service can now receive data from multiple COM ports you can select a port number using the drop down list. If only one port number is available the drop down list will be greyed out. To use the tool, click **Check** and then **Fix**. If the tool was successful, a dialog box will appear stating that SCASTs have been received.

8 Admin

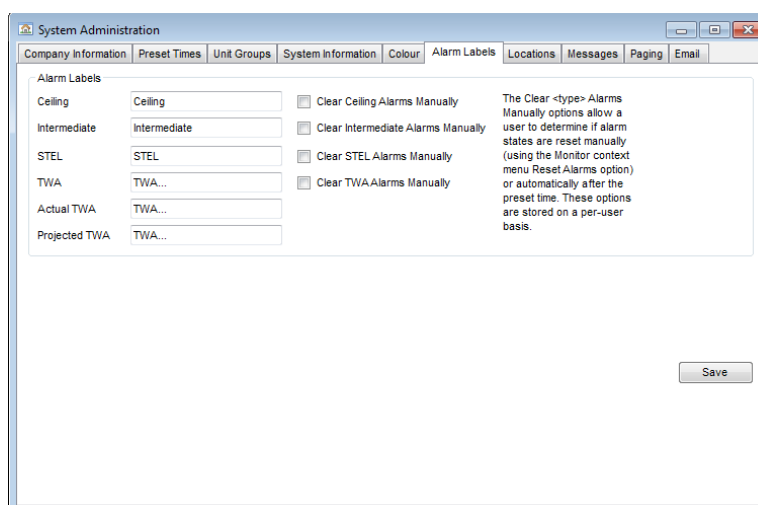
8.5 Colour

The colour screen allows you to change the colours of the icons next to the units (see section 6) to match any standard colours in use at the user's locale. To change the colour, click the button next to the colour, and select a new one from the palette. Click **Save** to keep any changes you have made.



8.6 Alarm Labels

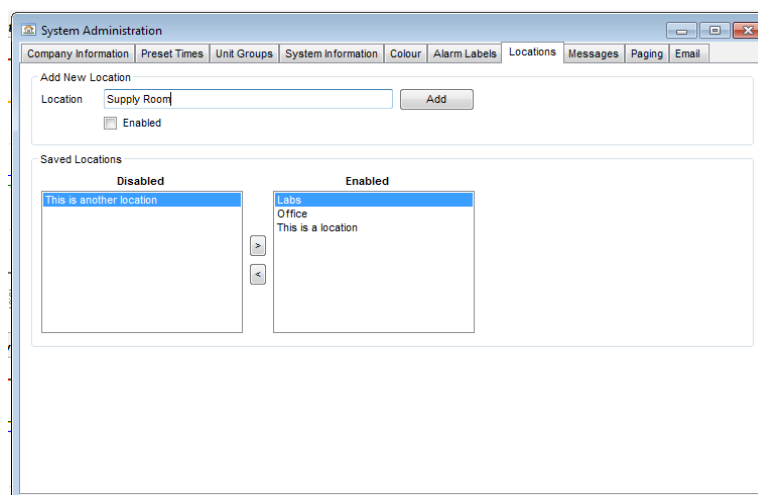
This screen allows you to change the names associated with the alarms. These new labels appear on the alarm screen and in the session and unit histories. To change a name, just type it into the appropriate text box, and click **Save** to keep the changes.



8 Admin

8.7 Locations

This screen allows you to assign units to different locations. This may help in finding where a unit is located, and also allows you to select locations to generate reports on (see section 7).



To add a location, type a name into the text box and click **Add**. Selecting **Enable** will add it to the Enabled list. To enable or disable a location, select it in the list, and use the arrow buttons to move it between the Enabled and Disabled lists.

8.8 Messages

This feature is not fully functional and currently has no use.

8.9 Paging

The paging feature (also found in Unit Setup) is only relevant to the SAS unit. Technical support will advise you when this feature needs to be used.

8 Admin

8.10 Email

This screen allows you to setup the system to send emails when a ceiling alarm is breached. Firstly you need to set an e-mail account from which you will send e-mails. For instance you could set up an e-mail with google called myEmail@google.com with the password myPassword¹. After this you will need to enter your Email Server Settings into the PPMonitor program and decide which e-mail account/s need to receive the alarm messages.

System Administration

Company Information | Preset Times | Unit Groups | System Information | Colour | Alarm Labels | Locations | Messages | Paging | Email

Email Settings

☒ Send emails on ceiling alarms?

Checked addresses will receive emails.

☒ info@ppm-technology.com

Add a New Recipient

Email Server Settings

Server: smtp.gmail.com

Port Number: 587 ☒ Use SSL?

Email Address: myEmail@gmail.com

Username: myEmail@gmail.com

Password:

Save

For the example above the Server setting is smtp.gmail.com using port number 587 and using SSL². Both the Email Address and Username are set to myEmail@gmail.com³. The password is myPassword or whatever you have chosen when setting up your account.

You can add new recipients, update selected recipients using the Emails Settings section. It is also possible to send a test e-mail by clicking on a recipient and pressing the **Send Test Email** button. If your Email Server Settings are correctly configured and your recipient is valid then you should shortly receive an e-mail in your account.

Email Settings

☒ Send emails on ceiling alarms?

Checked addresses will receive emails.

☒ huw@ppmtechnology.com

☒ info@ppm-technology.com

Add a New Recipient

Update the selected recipient.

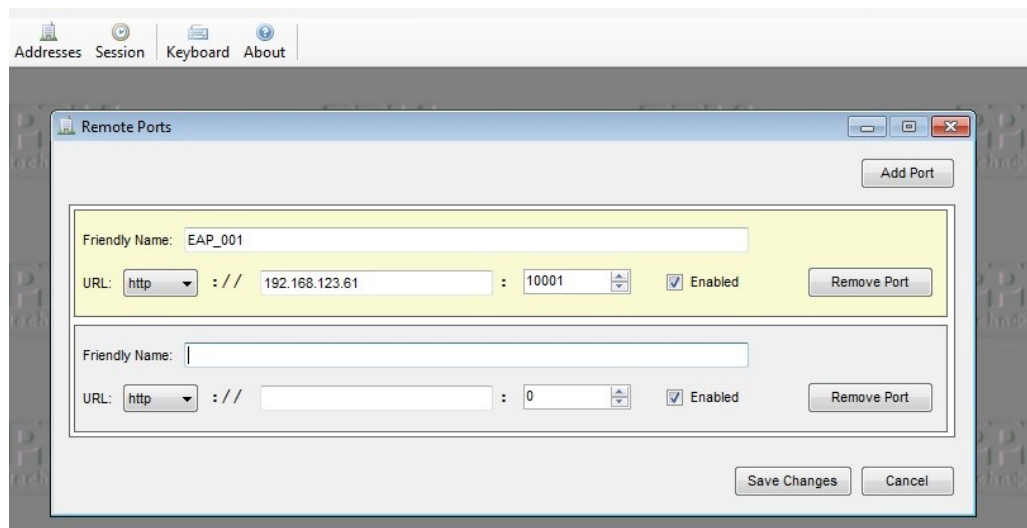
huw@ppmtechnology.com

Send Test Email | Update Recipient | Remove Recipient

9 Addresses

The addresses section is used to connect the client to a COM port on another computer on your network or to an Ethernet Access Point. The Ethernet Access Point is a "gateway" allowing access to ETRX2 mesh networking modules via an industry standard Ethernet IP Network. Once the IP address of the EAP has been established and Firewall access negotiated, the EAP can be accessed from anywhere in the world.

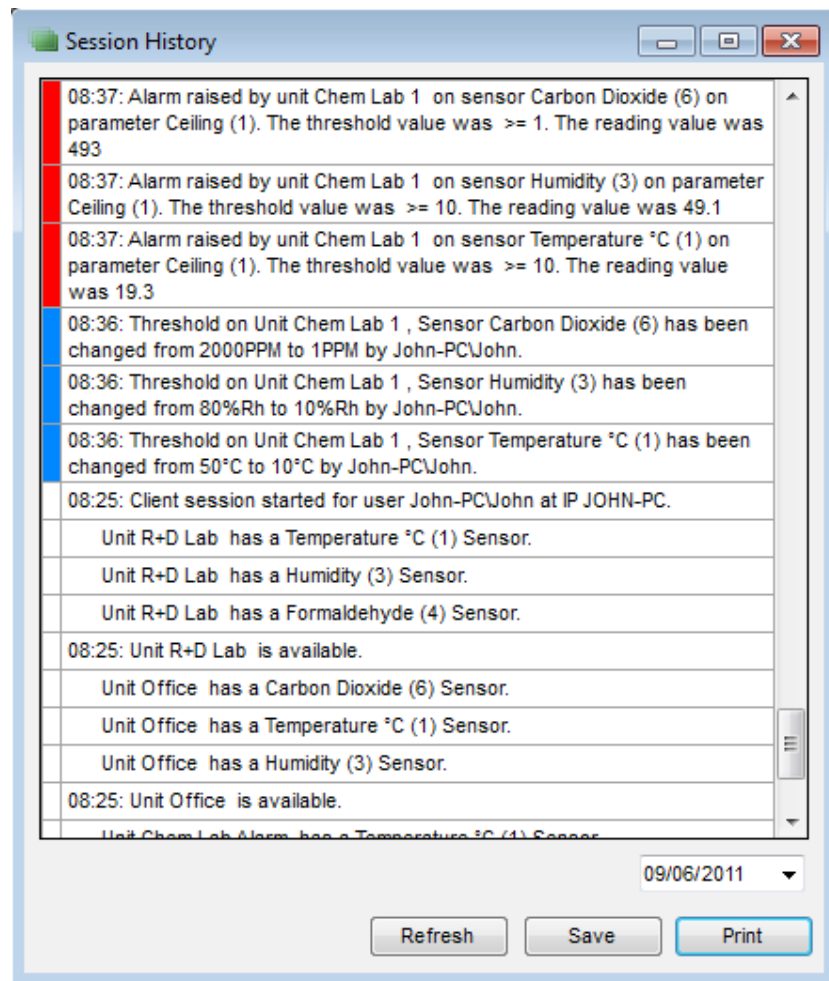
For example, multiple EAPs can be deployed, each connected via Ethernet to a ZigBee PAN in different parts of the building.



Here we see the system configured to accept data from EAP_001. The EAP is configured to transmit data on port 10001 of IP 192.168.123.61. You can configure the system to receive data from multiple EAPs by adding more remote ports on other IP addresses.

10 Session

The session window is similar to the Unit History, but this displays the history for all units and the software itself. The session history for today is displayed when opened, but the date can be changed using the drop down calendar at the lower right of the window. Clicking **Refresh** allows you to view events that have happened since the window was opened.



The session history can be exported as a text file by clicking **Save**, or it can be exported in printable format by clicking **Print**.

11 Troubleshooting

Alarms are not being triggered when values pass the threshold.

This may occasionally happen, and there is no obvious cause for it. Restarting the client is usually enough to resolve this problem.

The monitoring screen is not updating.

If the units have been detected but the graphs are not being updated, this problem is usually resolved by restarting the client.

Units are not being detected by the software.

The system is sent out pre-configured so that detection of units is automatic. If units are not being detected, try the following solutions:

1. Make sure the wireless units are turned on.
2. Make sure the wireless units are within range of each other and the PC recording the data.
3. If the units are not being detected after 10 minutes, follow the instructions in section 8.4 to run the **ZigBee Network Tool**.

If the troubleshooting section has not resolved any of your problems, please contact PPM Technology or your distributor. Contact details can be found here:

[Contact PPM Technology](#)